



Full wwPDB X-ray Structure Validation Report ⓘ

Feb 27, 2014 – 03:42 PM GMT

PDB ID : 1E2L
Title : KINETICS AND CRYSTAL STRUCTURE OF THE WILD-TYPE AND
THE ENGINEERED Y101F MUTANT OF HERPES SIMPLEX VIRUS
TYPE 1 THYMIDINE KINASE INTERACTING WITH (NORTH)-MET
HANOCARBA-THYMIDINE
Authors : Vogt, J.; Scapozza, L.; Schulz, G.E.
Deposited on : 2000-05-23
Resolution : 2.40 Å(reported)

This is a full wwPDB validation report for a publicly released PDB entry.
We welcome your comments at validation@mail.wwpdb.org
A user guide is available at <http://wwpdb.org/ValidationPDFNotes.html>

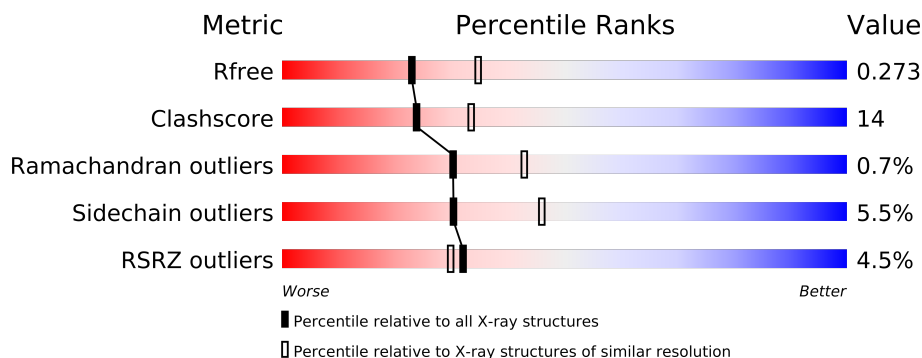
The following versions of software and data (see [references](#)) were used in the production of this report:

MolProbity : 4.02b-467
Mogul : 1.15 2013
Xtriage (Phenix) : dev-1323
EDS : stable22639
Percentile statistics : 21963
Refmac : 5.8.0049
CCP4 : 6.3.0 (Settle)
Ideal geometry (proteins) : Engh & Huber (2001)
Ideal geometry (DNA, RNA) : Parkinson et. al. (1996)
Validation Pipeline (wwPDB-VP) : stable22683

1 Overall quality at a glance

The reported resolution of this entry is 2.40 Å.

Percentile scores (ranging between 0-100) for global validation metrics of the entry are shown in the following graphic. The table shows the number of entries on which the scores are based.



Metric	Whole archive (#Entries)	Similar resolution (#Entries, resolution range(Å))
R_{free}	66092	2207 (2.40-2.40)
Clashscore	79885	2789 (2.40-2.40)
Ramachandran outliers	78287	2736 (2.40-2.40)
Sidechain outliers	78261	2737 (2.40-2.40)
RSRZ outliers	66119	2210 (2.40-2.40)

The table below summarises the geometric issues observed across the polymeric chains and their fit to the electron density. The red, orange, yellow and green segments on the lower bar indicate the fraction of residues that contain outliers for ≥ 3 , 2, 1 and 0 types of geometric quality criteria. The upper red bar (where present) indicates the fraction of residues that have poor fit to the electron density.

Mol	Chain	Length	Quality of chain
1	A	331	
1	B	331	

The following table lists non-polymeric compounds that are outliers for geometric or electron-density-fit criteria:

Mol	Type	Chain	Res	Geometry	Electron density
3	TMC	A	500	-	X
3	TMC	B	500	-	X

2 Entry composition

There are 4 unique types of molecules in this entry. The entry contains 4880 atoms, of which 0 are hydrogen and 0 are deuterium.

In the tables below, the ZeroOcc column contains the number of atoms modelled with zero occupancy, the AltConf column contains the number of residues with at least one atom in alternate conformation and the Trace column contains the number of residues modelled with at most 2 atoms.

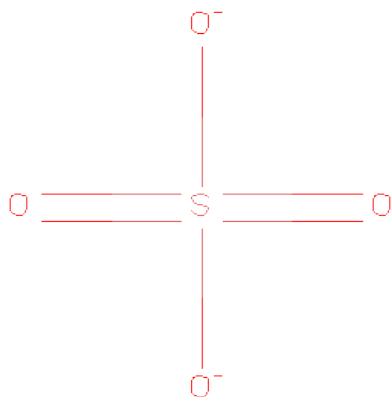
- Molecule 1 is a protein called THYMIDINE KINASE.

Mol	Chain	Residues	Atoms					ZeroOcc	AltConf	Trace
1	A	304	Total	C	N	O	S	0	0	0
			2327	1485	406	420	16			
1	B	310	Total	C	N	O	S	0	0	0
			2357	1502	410	429	16			

There are 2 discrepancies between the modelled and reference sequences:

Chain	Residue	Modelled	Actual	Comment	Reference
A	101	PHE	TYR	ENGINEERED MUTATION	UNP P03176
B	101	PHE	TYR	ENGINEERED MUTATION	UNP P03176

- Molecule 2 is SULFATE ION (three-letter code: SO₄) (formula: O₄S).



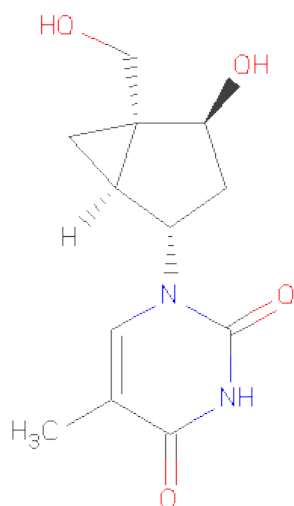
Mol	Chain	Residues	Atoms			ZeroOcc	AltConf
2	A	1	Total	O	S	0	0
			5	4	1		

Continued on next page...

Continued from previous page...

Mol	Chain	Residues	Atoms			ZeroOcc	AltConf
2	B	1	Total	O	S	0	0
			5	4	1		

- Molecule 3 is 1-[4-HYDROXY-5-(HYDROXYMETHYL)BICYCLO[3.1.0]HEX-2-YL]-5-METHYLPYRIMIDINE-2,4(1H,3H)-DIONE (three-letter code: TMC) (formula: C₁₂H₁₆N₂O₄).



Mol	Chain	Residues	Atoms				ZeroOcc	AltConf
3	A	1	Total	C	N	O	0	0
			18	12	2	4		
3	B	1	Total	C	N	O	0	0
			18	12	2	4		

- Molecule 4 is water.

Mol	Chain	Residues	Atoms		ZeroOcc	AltConf
4	A	77	Total	O	0	0
			77	77		
4	B	73	Total	O	0	0
			73	73		

4 Data and refinement statistics

Property	Value	Source
Space group	C 2 2 21	Depositor
Cell constants a, b, c, α , β , γ	114.00Å 118.30Å 108.60Å 90.00° 90.00° 90.00°	Depositor
Resolution (Å)	20.00 – 2.40 24.99 – 2.30	Depositor EDS
% Data completeness (in resolution range)	97.0 (20.00-2.40) 95.8 (24.99-2.30)	Depositor EDS
R_{merge}	0.08	Depositor
R_{sym}	0.08	Depositor
$\langle I/\sigma(I) \rangle$ ¹	2.40 (at 2.31Å)	Xtriage
Refinement program	REFMAC	Depositor
R, R_{free}	0.210 , 0.280 0.209 , 0.273	Depositor DCC
R_{free} test set	1600 reflections (5.35%)	DCC
Wilson B-factor (Å ²)	32.7	Xtriage
Anisotropy	0.636	Xtriage
Bulk solvent k_{sol} (e/Å ³), B_{sol} (Å ²)	0.35 , 29.6	EDS
Estimated twinning fraction	0.024 for -k,-h,-l	Xtriage
L-test for twinning	$\langle L \rangle = 0.50$, $\langle L^2 \rangle = 0.33$	Xtriage
Outliers	0 of 31528 reflections	Xtriage
F_o, F_c correlation	0.94	EDS
Total number of atoms	4880	wwPDB-VP
Average B, all atoms (Å ²)	38.0	wwPDB-VP

Xtriage's analysis on translational NCS is as follows: *The largest off-origin peak in the Patterson function is 5.16% of the height of the origin peak. No significant pseudotranslation is detected.*

¹Intensities estimated from amplitudes.

5 Model quality ⓘ

5.1 Standard geometry ⓘ

Bond lengths and bond angles in the following residue types are not validated in this section: TMC, SO4

The Z score for a bond length (or angle) is the number of standard deviations the observed value is removed from the expected value. A bond length (or angle) with $|Z| > 5$ is considered an outlier worth inspection. RMSZ is the root-mean-square of all Z scores of the bond lengths (or angles).

Mol	Chain	Bond lengths		Bond angles	
		RMSZ	# $ Z > 5$	RMSZ	# $ Z > 5$
1	A	0.62	0/2381	1.30	15/3246 (0.5%)
1	B	0.62	0/2410	1.28	23/3286 (0.7%)
All	All	0.62	0/4791	1.29	38/6532 (0.6%)

There are no bond length outliers.

All (38) bond angle outliers are listed below:

Mol	Chain	Res	Type	Atoms	Z	Observed(°)	Ideal(°)
1	A	320	ARG	NE-CZ-NH2	-15.97	112.32	120.30
1	A	320	ARG	NE-CZ-NH1	12.53	126.56	120.30
1	A	237	ARG	CD-NE-CZ	9.97	137.55	123.60
1	B	237	ARG	CD-NE-CZ	8.59	135.62	123.60
1	B	237	ARG	NE-CZ-NH1	8.33	124.47	120.30
1	B	370	ARG	CD-NE-CZ	7.64	134.30	123.60
1	A	370	ARG	CD-NE-CZ	7.64	134.29	123.60
1	B	318	ARG	NE-CZ-NH1	7.31	123.95	120.30
1	A	46	MET	CA-CB-CG	6.92	125.06	113.30
1	B	130	MET	CA-CB-CG	6.80	124.85	113.30
1	B	132	TYR	CB-CG-CD1	6.79	125.07	121.00
1	A	293	ARG	CD-NE-CZ	6.64	132.90	123.60
1	B	87	TYR	CB-CG-CD2	6.61	124.97	121.00
1	A	176	ARG	NE-CZ-NH1	6.47	123.54	120.30
1	B	87	TYR	CB-CG-CD1	-6.44	117.14	121.00
1	A	222	ARG	CD-NE-CZ	6.38	132.53	123.60
1	B	236	ARG	NE-CZ-NH1	5.98	123.29	120.30
1	A	293	ARG	NE-CZ-NH2	-5.95	117.32	120.30
1	B	290	THR	N-CA-CB	5.88	121.48	110.30
1	B	373	GLY	N-CA-C	-5.88	98.41	113.10
1	B	163	ARG	NE-CZ-NH2	-5.70	117.45	120.30
1	B	80	TYR	CB-CG-CD2	5.64	124.39	121.00

Continued on next page...

Continued from previous page...

Mol	Chain	Res	Type	Atoms	Z	Observed(°)	Ideal(°)
1	B	80	TYR	CB-CG-CD1	-5.62	117.63	121.00
1	A	51	ARG	CD-NE-CZ	5.53	131.34	123.60
1	B	130	MET	CB-CG-SD	5.51	128.93	112.40
1	B	363	ASP	CB-CG-OD1	5.42	123.18	118.30
1	B	226	ARG	NE-CZ-NH2	5.37	122.98	120.30
1	A	296	GLU	OE1-CD-OE2	-5.32	116.91	123.30
1	A	307	VAL	CB-CA-C	-5.29	101.35	111.40
1	A	226	ARG	CD-NE-CZ	5.28	130.99	123.60
1	B	307	VAL	CG1-CB-CG2	5.27	119.33	110.90
1	B	363	ASP	CB-CG-OD2	-5.20	113.62	118.30
1	B	236	ARG	CD-NE-CZ	5.19	130.87	123.60
1	B	281	ARG	NE-CZ-NH2	-5.16	117.72	120.30
1	A	328	ASP	CB-CG-OD1	5.07	122.86	118.30
1	B	290	THR	CB-CA-C	-5.05	97.97	111.60
1	B	307	VAL	CB-CA-C	-5.04	101.83	111.40
1	A	172	TYR	CA-CB-CG	-5.03	103.85	113.40

There are no chirality outliers.

There are no planarity outliers.

5.2 Close contacts ⓘ

In the following table, the Non-H and H(model) columns list the number of non-hydrogen atoms and hydrogen atoms in the chain respectively. The H(added) column lists the number of hydrogens added by MolProbity. The Clashes column lists the number of clashes within the asymmetric unit, and the number in parentheses is this value normalized per 1000 atoms of the molecule in the chain. The Symm-Clashes column gives symmetry related clashes, in the same way as for the Clashes column.

Mol	Chain	Non-H	H(model)	H(added)	Clashes	Symm-Clashes
1	A	2327	0	2347	72	0
1	B	2357	0	2374	66	0
2	A	5	0	0	1	0
2	B	5	0	0	0	0
3	A	18	0	16	1	0
3	B	18	0	16	1	0
4	A	77	0	0	7	0
4	B	73	0	0	7	0
All	All	4880	0	4753	136	0

Clashscore is defined as the number of clashes calculated for the entry per 1000 atoms (including

hydrogens) of the entry. The overall clashscore for this entry is 14.

All (136) close contacts within the same asymmetric unit are listed below.

Atom-1	Atom-2	Distance(Å)	Clash(Å)
1:A:126:ILE:HD11	1:B:126:ILE:HD11	1.46	0.95
1:A:130:MET:HB3	1:A:131:PRO:HD3	1.54	0.87
1:B:354:THR:HB	1:B:355:PRO:HD2	1.57	0.86
1:B:262:LEU:HD22	1:B:290:THR:HG22	1.60	0.81
1:A:262:LEU:HD22	1:A:290:THR:HG22	1.63	0.79
1:A:290:THR:HG21	4:A:2066:HOH:O	1.81	0.78
1:B:290:THR:HG21	4:B:2053:HOH:O	1.85	0.75
1:A:67:GLN:HG3	4:A:2008:HOH:O	1.86	0.74
1:A:153:PRO:HB2	1:A:154:PRO:HD3	1.70	0.72
1:B:66:THR:HG21	1:B:80:TYR:CE1	2.25	0.72
1:B:262:LEU:O	1:B:263:SER:HB2	1.88	0.71
1:A:285:GLY:HA2	1:A:290:THR:HG23	1.71	0.70
1:B:59:GLY:O	1:B:216:ARG:HD2	1.89	0.70
1:A:373:GLY:O	1:A:374:GLU:HB2	1.91	0.69
1:A:62:LYS:HG3	4:A:2004:HOH:O	1.91	0.69
1:B:140:ALA:HB3	1:B:141:PRO:HD3	1.76	0.69
1:B:358:ILE:HB	1:B:359:PRO:HD3	1.75	0.68
1:A:208:LEU:HD12	1:A:209:PRO:HD2	1.74	0.68
1:B:116:ASP:O	1:B:119:VAL:HG23	1.95	0.67
1:B:285:GLY:HA2	1:B:290:THR:HG23	1.77	0.66
1:A:212:ARG:NH1	1:A:216:ARG:HH21	1.94	0.66
1:A:354:THR:HB	1:A:355:PRO:HD2	1.78	0.66
1:A:153:PRO:CB	1:A:154:PRO:HD3	2.27	0.65
1:A:69:LEU:HD21	1:A:341:LEU:HD13	1.78	0.65
1:A:157:LEU:HD22	1:A:358:ILE:HG23	1.79	0.64
1:A:61:GLY:HA2	1:A:220:ARG:HH12	1.63	0.64
1:B:130:MET:HB3	1:B:131:PRO:HD3	1.80	0.64
1:B:263:SER:HA	1:B:293:ARG:NH1	2.13	0.63
1:A:285:GLY:HA2	1:A:290:THR:CG2	2.27	0.63
1:A:61:GLY:HA2	1:A:220:ARG:NH1	2.13	0.62
1:A:262:LEU:HD22	1:A:290:THR:CG2	2.32	0.59
1:B:285:GLY:HA2	1:B:290:THR:CG2	2.33	0.59
1:B:219:LYS:HA	4:B:2038:HOH:O	2.03	0.57
1:A:121:MET:HB3	1:A:182:MET:HE2	1.87	0.57
1:A:64:THR:O	1:A:68:LEU:HG	2.05	0.57
1:A:246:VAL:O	1:A:250:GLN:HG3	2.06	0.56
1:A:164:HIS:ND1	1:A:166:ILE:HG12	2.20	0.56
1:A:153:PRO:HB2	1:A:154:PRO:CD	2.36	0.56
1:A:69:LEU:HD11	1:A:341:LEU:HD13	1.87	0.55
1:B:333:PRO:HA	4:B:2005:HOH:O	2.06	0.55

Continued on next page...

Continued from previous page...

Atom-1	Atom-2	Distance(Å)	Clash(Å)
1:A:364:LEU:HD22	1:B:310:TRP:CZ2	2.42	0.55
1:A:62:LYS:HB2	1:A:62:LYS:NZ	2.23	0.55
1:A:219:LYS:HB3	1:A:219:LYS:NZ	2.22	0.54
1:A:362:CYS:HB3	1:A:366:ARG:CZ	2.39	0.53
1:B:262:LEU:HD22	1:B:290:THR:CG2	2.36	0.52
1:B:124:ALA:O	1:B:128:MET:HG2	2.09	0.52
1:B:357:SER:O	1:B:361:ILE:HG13	2.10	0.52
1:A:299:ALA:HB1	1:A:300:PRO:HD2	1.91	0.52
1:B:86:THR:HB	1:B:372:MET:HA	1.91	0.51
1:B:109:GLN:HB3	1:B:111:GLU:HG3	1.92	0.51
1:A:221:GLN:OE1	1:A:225:GLU:HG2	2.11	0.51
1:B:164:HIS:CG	1:B:165:PRO:HD2	2.44	0.51
1:A:362:CYS:HB3	1:A:366:ARG:NH1	2.26	0.51
1:B:246:VAL:HG21	1:B:324:VAL:HG21	1.93	0.51
1:B:56:GLY:HA2	1:B:239:TYR:CD1	2.46	0.51
1:A:51:ARG:HG3	4:A:2001:HOH:O	2.11	0.50
1:B:66:THR:O	1:B:70:VAL:HG23	2.10	0.50
1:A:87:TYR:HA	1:A:91:LEU:HB2	1.94	0.50
1:A:130:MET:HB3	1:A:131:PRO:CD	2.33	0.50
1:A:159:LEU:HD13	1:A:161:PHE:CZ	2.46	0.49
1:A:216:ARG:HD3	4:A:2048:HOH:O	2.12	0.49
1:A:69:LEU:HD11	1:A:341:LEU:CD1	2.43	0.49
1:B:85:MET:CE	1:B:89:ARG:HG3	2.41	0.49
1:B:276:SER:HB2	1:B:324:VAL:HB	1.95	0.49
1:B:209:PRO:HD3	4:B:2063:HOH:O	2.12	0.49
1:B:240:GLY:HA2	1:B:274:PRO:HG2	1.95	0.48
1:B:59:GLY:HA3	1:B:217:LEU:HD13	1.95	0.48
1:B:367:THR:HA	1:B:370:ARG:NH1	2.29	0.48
1:B:88:TRP:HZ2	1:B:132:TYR:HH	1.61	0.48
1:B:373:GLY:O	1:B:374:GLU:C	2.52	0.48
1:A:327:LEU:HD23	1:A:329:TYR:CZ	2.48	0.48
1:B:217:LEU:CD2	1:B:232:LEU:HD13	2.44	0.48
1:B:97:ILE:HG23	1:B:101:PHE:HE2	1.79	0.48
1:A:212:ARG:HH12	1:A:216:ARG:HH21	1.62	0.48
1:B:354:THR:HB	1:B:355:PRO:CD	2.35	0.47
1:A:97:ILE:HD13	3:A:500:TMC:H152	1.95	0.47
1:A:58:HIS:HB3	1:A:163:ARG:NH2	2.30	0.47
1:B:331:GLN:HB2	4:B:2065:HOH:O	2.14	0.47
1:B:287:THR:HG1	1:B:289:PHE:HD2	1.60	0.47
1:A:79:VAL:HG12	1:A:80:TYR:N	2.29	0.47
1:A:69:LEU:CD2	1:A:341:LEU:HD13	2.45	0.47
1:B:62:LYS:NZ	1:B:62:LYS:HB2	2.29	0.47

Continued on next page...

Continued from previous page...

Atom-1	Atom-2	Distance(Å)	Clash(Å)
1:B:171:CYS:HA	1:B:238:VAL:HG11	1.98	0.46
1:B:299:ALA:HA	1:B:305:TYR:CZ	2.51	0.46
1:A:213:HIS:NE2	1:A:232:LEU:HD11	2.31	0.46
1:B:247:ARG:NH1	1:B:275:GLN:O	2.49	0.46
1:B:46:MET:HA	1:B:46:MET:HE2	1.98	0.46
1:A:58:HIS:ND1	1:A:172:TYR:OH	2.43	0.45
1:B:366:ARG:HD2	4:B:2069:HOH:O	2.16	0.45
1:A:178:LEU:HD21	1:A:291:LEU:HD22	1.97	0.45
1:B:83:GLU:HG3	1:B:88:TRP:CH2	2.52	0.45
1:B:97:ILE:HD13	3:B:500:TMC:H152	1.98	0.45
1:A:358:ILE:N	1:A:359:PRO:HD2	2.32	0.45
1:A:139:LEU:HD21	1:A:159:LEU:HD11	1.99	0.45
1:B:74:SER:HB3	1:B:77:ASP:CG	2.37	0.45
1:B:182:MET:HG3	4:B:2018:HOH:O	2.17	0.44
1:A:130:MET:CB	1:A:131:PRO:HD3	2.35	0.44
1:A:222:ARG:O	1:A:225:GLU:HB3	2.17	0.44
1:B:69:LEU:HD21	1:B:341:LEU:CD1	2.47	0.44
1:B:102:THR:HA	1:B:226:ARG:HH12	1.83	0.44
1:B:66:THR:HG23	1:B:160:ILE:HG21	2.00	0.43
1:A:164:HIS:CG	1:A:165:PRO:HD2	2.53	0.43
1:A:148:GLY:O	1:A:149:SER:C	2.56	0.43
1:B:247:ARG:HH21	1:B:280:PRO:HD2	1.83	0.43
1:B:213:HIS:CE1	1:B:232:LEU:HD11	2.53	0.43
1:A:78:ILE:HD11	1:A:160:ILE:CD1	2.48	0.43
1:B:218:ALA:O	1:B:219:LYS:HB2	2.18	0.43
1:A:352:VAL:CG2	1:A:357:SER:HB2	2.48	0.43
1:B:121:MET:HG3	1:B:181:SER:HB2	2.01	0.43
1:A:68:LEU:HB2	1:A:337:ARG:HG3	2.00	0.42
1:B:109:GLN:CB	1:B:111:GLU:HG3	2.49	0.42
1:A:352:VAL:HG21	1:A:357:SER:HB2	2.00	0.42
1:A:212:ARG:HD3	4:A:2045:HOH:O	2.20	0.42
1:A:211:ASP:HB2	4:A:2046:HOH:O	2.19	0.42
1:B:57:PRO:HB3	1:B:235:ILE:HG23	2.02	0.42
1:A:220:ARG:HG3	1:A:220:ARG:O	2.20	0.41
1:A:299:ALA:HB1	1:A:300:PRO:CD	2.50	0.41
1:A:219:LYS:HB3	1:A:219:LYS:HZ2	1.85	0.41
1:A:304:LEU:HD22	1:A:308:PHE:HB2	2.02	0.41
1:A:118:ALA:HA	1:A:181:SER:O	2.21	0.41
1:A:154:PRO:HA	1:A:155:PRO:HD3	1.85	0.41
1:B:87:TYR:HB2	1:B:372:MET:SD	2.59	0.41
1:B:78:ILE:HA	1:B:158:THR:O	2.21	0.41
1:A:57:PRO:O	1:A:60:MET:HE2	2.21	0.41

Continued on next page...

Continued from previous page...

Atom-1	Atom-2	Distance(Å)	Clash(Å)
1:B:106:ARG:NH1	1:B:111:GLU:OE1	2.54	0.41
1:A:222:ARG:HG3	1:A:222:ARG:HH11	1.85	0.41
1:B:46:MET:HE1	1:B:47:PRO:HD3	2.02	0.41
1:B:74:SER:HB3	1:B:77:ASP:OD1	2.21	0.41
1:A:58:HIS:HB2	2:A:400:SO4:O4	2.20	0.41
1:A:78:ILE:HD11	1:A:160:ILE:HD12	2.02	0.41
1:B:74:SER:HB3	1:B:77:ASP:OD2	2.21	0.41
1:B:281:ARG:HA	1:B:282:PRO:HD3	1.81	0.41
1:A:217:LEU:HD22	1:A:232:LEU:HD13	2.02	0.40
1:A:254:SER:HB3	1:A:257:GLU:HB3	2.02	0.40
1:B:72:LEU:HD11	1:B:337:ARG:HD2	2.04	0.40
1:A:102:THR:O	1:A:106:ARG:HG3	2.21	0.40

There are no symmetry-related clashes.

5.3 Torsion angles

5.3.1 Protein backbone ⓘ

In the following table, the Percentiles column shows the percent Ramachandran outliers of the chain as a percentile score with respect to all X-ray entries followed by that with respect to entries of similar resolution. The Analysed column shows the number of residues for which the backbone conformation was analysed, and the total number of residues.

Mol	Chain	Analysed	Favoured	Allowed	Outliers	Percentiles	
1	A	296/331 (89%)	277 (94%)	17 (6%)	2 (1%)	30	43
1	B	302/331 (91%)	288 (95%)	12 (4%)	2 (1%)	30	43
All	All	598/662 (90%)	565 (94%)	29 (5%)	4 (1%)	30	43

All (4) Ramachandran outliers are listed below:

Mol	Chain	Res	Type
1	B	263	SER
1	A	154	PRO
1	A	320	ARG
1	B	147	ALA

5.3.2 Protein sidechains ⓘ

In the following table, the Percentiles column shows the percent sidechain outliers of the chain as a percentile score with respect to all X-ray entries followed by that with respect to entries of similar resolution. The Analysed column shows the number of residues for which the sidechain conformation was analysed, and the total number of residues.

Mol	Chain	Analysed	Rotameric	Outliers	Percentiles	
1	A	246/264 (93%)	231 (94%)	15 (6%)	26	40
1	B	249/264 (94%)	237 (95%)	12 (5%)	35	53
All	All	495/528 (94%)	468 (94%)	27 (6%)	30	46

All (27) residues with a non-rotameric sidechain are listed below:

Mol	Chain	Res	Type
1	A	127	THR
1	A	130	MET
1	A	134	VAL
1	A	159	LEU
1	A	161	PHE
1	A	212	ARG
1	A	215	ASP
1	A	219	LYS
1	A	222	ARG
1	A	293	ARG
1	A	304	LEU
1	A	307	VAL
1	A	343	LEU
1	A	366	ARG
1	A	374	GLU
1	B	67	GLN
1	B	75	ARG
1	B	119	VAL
1	B	123	SER
1	B	130	MET
1	B	212	ARG
1	B	247	ARG
1	B	263	SER
1	B	307	VAL
1	B	366	ARG
1	B	368	PHE
1	B	374	GLU

Some sidechains can be flipped to improve hydrogen bonding and reduce clashes. All (1) such

sidechains are listed below:

Mol	Chain	Res	Type
1	B	349	GLN

5.3.3 RNA ⓘ

There are no RNA chains in this entry.

5.4 Non-standard residues in protein, DNA, RNA chains ⓘ

There are no non-standard protein/DNA/RNA residues in this entry.

5.5 Carbohydrates ⓘ

There are no carbohydrates in this entry.

5.6 Ligand geometry ⓘ

4 ligands are modelled in this entry.

In the following table, the Counts columns list the number of bonds (or angles) for which Mogul statistics could be retrieved, the number of bonds (or angles) that are observed in the model and the number of bonds (or angles) that are defined in the chemical component dictionary. The Link column lists molecule types, if any, to which the group is linked. The Z score for a bond length (or angle) is the number of standard deviations the observed value is removed from the expected value. A bond length (or angle) with $|Z| > 2$ is considered an outlier worth inspection. RMSZ is the root-mean-square of all Z scores of the bond lengths (or angles).

Mol	Type	Chain	Res	Link	Bond lengths			Bond angles		
					Counts	RMSZ	$\# Z > 2$	Counts	RMSZ	$\# Z > 2$
2	SO4	A	400	-	4,4,4	1.00	0	6,6,6	0.12	0
3	TMC	A	500	-	20,20,20	1.06	1 (5%)	27,32,32	2.20	7 (25%)
2	SO4	B	400	-	4,4,4	1.21	0	6,6,6	0.43	0
3	TMC	B	500	-	20,20,20	0.92	0	27,32,32	1.59	5 (18%)

In the following table, the Chirals column lists the number of chiral outliers, the number of chiral centers analysed, the number of these observed in the model and the number defined in the chemical component dictionary. Similar counts are reported in the Torsion and Rings columns. '-' means no outliers of that kind were identified.

Mol	Type	Chain	Res	Link	Chirals	Torsions	Rings
2	SO4	A	400	-	-	0/0/0/0	0/0/0/0
3	TMC	A	500	-	-	0/5/29/29	0/1/3/3
2	SO4	B	400	-	-	0/0/0/0	0/0/0/0
3	TMC	B	500	-	-	0/5/29/29	0/1/3/3

All (1) bond length outliers are listed below:

Mol	Chain	Res	Type	Atoms	Z	Observed(Å)	Ideal(Å)
3	A	500	TMC	C2-N8	2.19	1.39	1.34

All (12) bond angle outliers are listed below:

Mol	Chain	Res	Type	Atoms	Z	Observed(°)	Ideal(°)
3	A	500	TMC	C2-N8-C11	-6.76	120.49	122.41
3	A	500	TMC	C3-C4-C6	-4.78	116.17	121.04
3	B	500	TMC	C14-C17-N8	-3.58	107.88	113.51
3	A	500	TMC	C14-C17-N8	-3.34	108.25	113.51
3	A	500	TMC	C14-C10-C1	3.14	107.65	103.08
3	B	500	TMC	O16-C12-C1	-2.93	105.36	111.87
3	A	500	TMC	O16-C12-C1	-2.71	105.84	111.87
3	B	500	TMC	C15-C13-C17	-2.54	111.58	116.48
3	B	500	TMC	C2-N8-C11	-2.48	121.70	122.41
3	A	500	TMC	C2-C4-C6	2.42	120.97	115.11
3	B	500	TMC	C14-C17-C13	2.15	107.20	104.26
3	A	500	TMC	C3-C4-C2	2.00	122.85	118.59

There are no chirality outliers.

There are no torsion outliers.

There are no ring outliers.

5.7 Other polymers ⓘ

There are no such residues in this entry.

5.8 Polymer linkage issues

There are no chain breaks in this entry.

6 Fit of model and data ⓘ

6.1 Protein, DNA and RNA chains ⓘ

In the following table, the column labelled ‘#RSRZ > 2’ contains the number (and percentage) of RSRZ outliers, followed by percent RSRZ outliers for the chain as percentile scores relative to all X-ray entries and entries of similar resolution. The OWAB column contains the minimum, median, 95th percentile and maximum values of the occupancy-weighted average B-factor per residue. The column labelled ‘Q < 0.9’ lists the number of (and percentage) of residues with an average occupancy less than 0.9.

Mol	Chain	Analysed	<RSRZ>	#RSRZ>2	OWAB(Å ²)	Q<0.9
1	A	304/331 (91%)	-0.26	15 (4%) 28 26	17, 32, 78, 110	0
1	B	310/331 (93%)	-0.24	13 (4%) 35 32	18, 33, 75, 138	0
All	All	614/662 (92%)	-0.25	28 (4%) 32 29	17, 33, 77, 138	0

All (28) RSRZ outliers are listed below:

Mol	Chain	Res	Type	RSRZ
1	A	149	SER	4.9
1	A	148	GLY	4.9
1	B	274	PRO	4.8
1	B	226	ARG	4.8
1	B	264	GLY	4.6
1	B	277	ASN	4.0
1	A	264	GLY	3.4
1	B	300	PRO	3.3
1	A	332	SER	3.2
1	A	62	LYS	2.8
1	B	75	ARG	2.8
1	B	46	MET	2.7
1	A	66	THR	2.7
1	A	65	THR	2.7
1	B	227	LEU	2.6
1	A	68	LEU	2.6
1	A	334	ALA	2.5
1	A	61	GLY	2.4
1	A	63	THR	2.4
1	B	74	SER	2.3
1	B	263	SER	2.3
1	B	276	SER	2.3
1	B	217	LEU	2.2
1	A	154	PRO	2.2

Continued on next page...

Continued from previous page...

Mol	Chain	Res	Type	RSRZ
1	A	69	LEU	2.1
1	A	335	GLY	2.1
1	B	275	GLN	2.1
1	A	263	SER	2.1

6.2 Non-standard residues in protein, DNA, RNA chains ⓘ

There are no non-standard protein/DNA/RNA residues in this entry.

6.3 Carbohydrates ⓘ

There are no carbohydrates in this entry.

6.4 Ligands ⓘ

In the following table, the Atoms column lists the number of modelled atoms in the group and the number defined in the chemical component dictionary. LLDF column lists the quality of electron density of the group with respect to its neighbouring residues in protein, DNA or RNA chains. The B-factors column lists the minimum, median, 95th percentile and maximum values of B factors of atoms in the group. The column labelled 'Q< 0.9' lists the number of atoms with occupancy less than 0.9.

Mol	Type	Chain	Res	Atoms	RSR	LLDF	B-factors(Å ²)	Q<0.9
3	TMC	A	500	18/18	0.36	8.96	11,25,35,38	18
3	TMC	B	500	18/18	0.32	6.45	15,23,28,30	18
2	SO4	A	400	5/5	0.23	0.38	78,78,80,84	0
2	SO4	B	400	5/5	0.09	-0.73	34,34,42,43	0

6.5 Other polymers ⓘ

There are no such residues in this entry.