



# Full wwPDB X-ray Structure Validation Report ⓘ

Feb 26, 2014 – 06:44 PM GMT

PDB ID : 1E32  
Title : STRUCTURE OF THE N-TERMINAL DOMAIN AND THE D1 AAA DOMAIN OF MEMBRANE FUSION ATPASE P97  
Authors : Zhang, X.; Shaw, A.; Bates, P.A.; Gorman, M.A.; Kondo, H.; Dokurno, P.; Leonard M, G.; Sternberg, J.E.; Freemont, P.S.  
Deposited on : 2000-06-05  
Resolution : 2.90 Å(reported)

This is a full wwPDB validation report for a publicly released PDB entry.  
We welcome your comments at [validation@mail.wwpdb.org](mailto:validation@mail.wwpdb.org)  
A user guide is available at <http://wwpdb.org/ValidationPDFNotes.html>

---

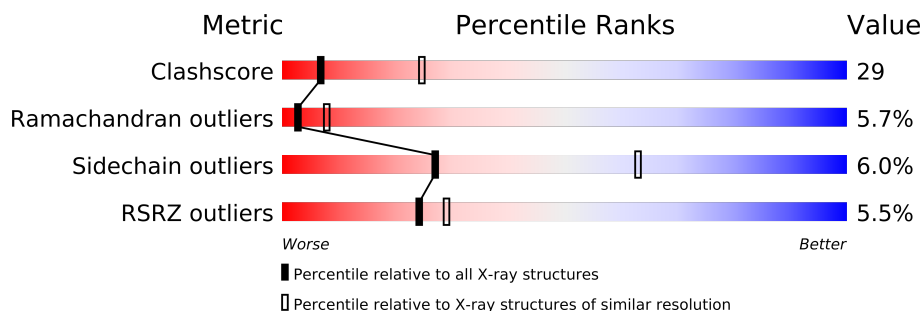
The following versions of software and data (see [references](#)) were used in the production of this report:

MolProbity : 4.02b-467  
Mogul : 1.15 2013  
Xtriage (Phenix) : dev-1323  
EDS : stable22639  
Percentile statistics : 21963  
Refmac : 5.8.0049  
CCP4 : 6.3.0 (Settle)  
Ideal geometry (proteins) : Engh & Huber (2001)  
Ideal geometry (DNA, RNA) : Parkinson et. al. (1996)  
Validation Pipeline (wwPDB-VP) : stable22683

# 1 Overall quality at a glance


The reported resolution of this entry is 2.90 Å.

Percentile scores (ranging between 0-100) for global validation metrics of the entry are shown in the following graphic. The table shows the number of entries on which the scores are based.



Metric	Whole archive (#Entries)	Similar resolution (#Entries, resolution range(Å))
Clashscore	79885	1326 (2.90-2.90)
Ramachandran outliers	78287	1290 (2.90-2.90)
Sidechain outliers	78261	1292 (2.90-2.90)
RSRZ outliers	66119	1054 (2.90-2.90)

The table below summarises the geometric issues observed across the polymeric chains and their fit to the electron density. The red, orange, yellow and green segments on the lower bar indicate the fraction of residues that contain outliers for  $\geq 3$ , 2, 1 and 0 types of geometric quality criteria. The upper red bar (where present) indicates the fraction of residues that have poor fit to the electron density.

Mol	Chain	Length	Quality of chain
1	A	458	

## 2 Entry composition i

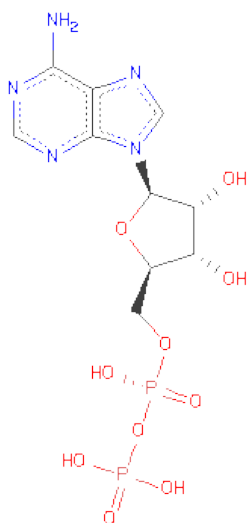
There are 3 unique types of molecules in this entry. The entry contains 3414 atoms, of which 0 are hydrogen and 0 are deuterium.

In the tables below, the ZeroOcc column contains the number of atoms modelled with zero occupancy, the AltConf column contains the number of residues with at least one atom in alternate conformation and the Trace column contains the number of residues modelled with at most 2 atoms.

- Molecule 1 is a protein called P97.

Mol	Chain	Residues	Atoms					ZeroOcc	AltConf	Trace
			Total	C	N	O	S			
1	A	438	3336	2097	586	635	18	14	0	0

- Molecule 2 is ADENOSINE-5'-DIPHOSPHATE (three-letter code: ADP) (formula:  $C_{10}H_{15}N_5O_{10}P_2$ ).



Mol	Chain	Residues	Atoms					ZeroOcc	AltConf
			Total	C	N	O	P		
2	A	1	27	10	5	10	2	0	0

- Molecule 3 is water.

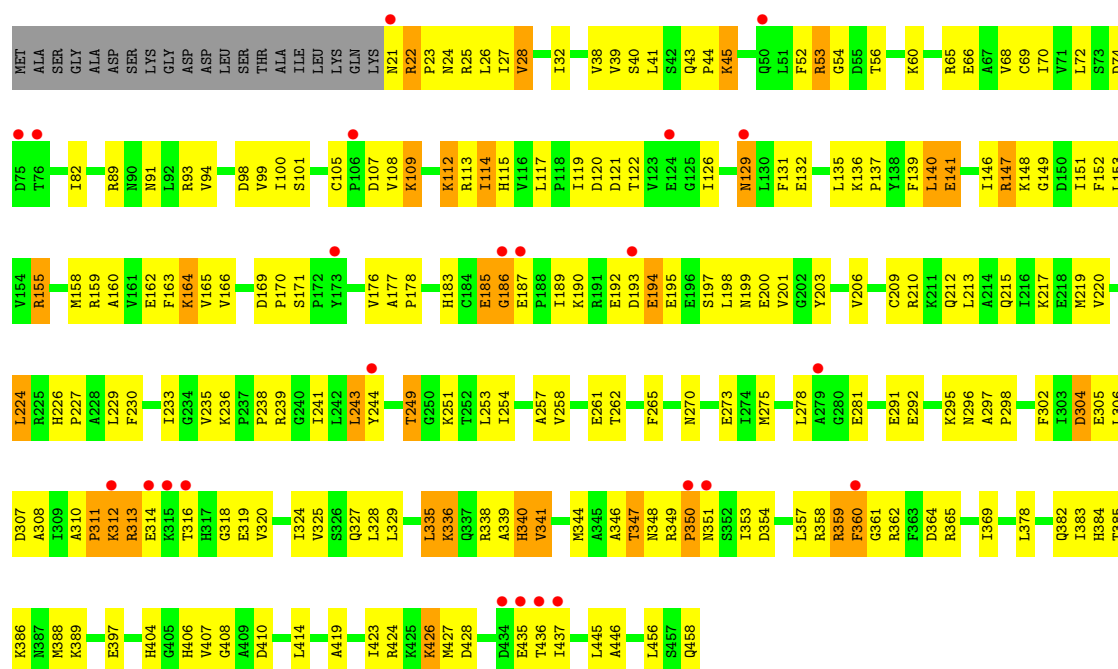
Mol	Chain	Residues	Atoms	ZeroOcc	AltConf
3	A	51	Total 51 O 51	0	0

### 3 Residue-property plots

These plots are drawn for all protein, RNA and DNA chains in the entry. The first graphic for a chain summarises the proportions of errors displayed in the second graphic. The second graphic shows the sequence view annotated by issues in geometry and electron density. Residues are color-coded according to the number of geometric quality criteria for which they contain at least one outlier: green = 0, yellow = 1, orange = 2 and red = 3 or more. A red dot above a residue indicates a poor fit to the electron density ( $RSRZ > 2$ ). Stretches of 2 or more consecutive residues without any outlier are shown as a green connector. Residues present in the sample, but not in the model, are shown in grey.

#### • Molecule 1: P97

Chain A: 



## 4 Data and refinement statistics

Property	Value	Source
Space group	P 6 2 2	Depositor
Cell constants a, b, c, $\alpha$ , $\beta$ , $\gamma$	146.00Å 146.00Å 84.70Å 90.00° 90.00° 120.00°	Depositor
Resolution (Å)	15.00 – 2.90 20.01 – 2.91	Depositor EDS
% Data completeness (in resolution range)	97.0 (15.00-2.90) 99.9 (20.01-2.91)	Depositor EDS
$R_{merge}$	0.09	Depositor
$R_{sym}$	0.09	Depositor
$\langle I/\sigma(I) \rangle$ <sup>1</sup>	6.65 (at 2.93Å)	Xtriage
Refinement program	CNS 0.5	Depositor
R, $R_{free}$	0.224 , 0.283 0.229 , (Not available)	Depositor DCC
$R_{free}$ test set	No test flags present.	DCC
Wilson B-factor (Å <sup>2</sup> )	36.9	Xtriage
Anisotropy	0.904	Xtriage
Bulk solvent $k_{sol}$ (e/Å <sup>3</sup> ), $B_{sol}$ (Å <sup>2</sup> )	0.37 , 28.4	EDS
Estimated twinning fraction	No twinning to report.	Xtriage
L-test for twinning	$\langle  L  \rangle = 0.49$ , $\langle L^2 \rangle = 0.32$	Xtriage
Outliers	0 of 12080 reflections	Xtriage
$F_o, F_c$ correlation	0.91	EDS
Total number of atoms	3414	wwPDB-VP
Average B, all atoms (Å <sup>2</sup> )	31.0	wwPDB-VP

Xtriage's analysis on translational NCS is as follows: *The largest off-origin peak in the Patterson function is 3.16% of the height of the origin peak. No significant pseudotranslation is detected.*

<sup>1</sup>Intensities estimated from amplitudes.

## 5 Model quality

### 5.1 Standard geometry

Bond lengths and bond angles in the following residue types are not validated in this section: ADP

The Z score for a bond length (or angle) is the number of standard deviations the observed value is removed from the expected value. A bond length (or angle) with  $|Z| > 5$  is considered an outlier worth inspection. RMSZ is the root-mean-square of all Z scores of the bond lengths (or angles).

Mol	Chain	Bond lengths		Bond angles	
		RMSZ	$\# Z  > 5$	RMSZ	$\# Z  > 5$
1	A	0.39	0/3388	0.70	1/4594 (0.0%)

There are no bond length outliers.

All (1) bond angle outliers are listed below:

Mol	Chain	Res	Type	Atoms	Z	Observed( $^{\circ}$ )	Ideal( $^{\circ}$ )
1	A	186	GLY	N-CA-C	7.01	130.63	113.10

There are no chirality outliers.

There are no planarity outliers.

### 5.2 Close contacts

In the following table, the Non-H and H(model) columns list the number of non-hydrogen atoms and hydrogen atoms in the chain respectively. The H(added) column lists the number of hydrogens added by MolProbity. The Clashes column lists the number of clashes within the asymmetric unit, and the number in parentheses is this value normalized per 1000 atoms of the molecule in the chain. The Symm-Clashes column gives symmetry related clashes, in the same way as for the Clashes column.

Mol	Chain	Non-H	H(model)	H(added)	Clashes	Symm-Clashes
1	A	3336	0	3305	193	0
2	A	27	0	12	2	0
3	A	51	0	0	1	0
All	All	3414	0	3317	193	0

Clashscore is defined as the number of clashes calculated for the entry per 1000 atoms (including hydrogens) of the entry. The overall clashscore for this entry is 29.

All (193) close contacts within the same asymmetric unit are listed below.

Atom-1	Atom-2	Distance(Å)	Clash(Å)
1:A:169:ASP:HB3	1:A:170:PRO:HD3	1.42	0.99
1:A:129:ASN:ND2	1:A:132:GLU:H	1.69	0.90
1:A:353:ILE:HG23	1:A:357:LEU:HD12	1.55	0.88
1:A:203:TYR:CE2	1:A:261:GLU:HG2	2.10	0.86
1:A:194:GLU:CD	1:A:194:GLU:H	1.81	0.83
1:A:312:LYS:HA	1:A:316:THR:CB	2.12	0.80
1:A:91:ASN:HD21	1:A:151:ILE:H	1.28	0.80
1:A:27:ILE:HD13	1:A:99:VAL:HG12	1.62	0.79
1:A:239:ARG:HD3	1:A:336:LYS:HD2	1.64	0.79
1:A:129:ASN:C	1:A:129:ASN:HD22	1.84	0.77
1:A:129:ASN:HD21	1:A:132:GLU:H	1.31	0.77
1:A:254:ILE:CD1	1:A:369:ILE:HD13	2.15	0.77
1:A:254:ILE:HD12	1:A:369:ILE:HD13	1.68	0.76
1:A:169:ASP:HB3	1:A:170:PRO:CD	2.15	0.76
1:A:177:ALA:HB1	1:A:178:PRO:HD2	1.65	0.76
1:A:254:ILE:HD12	1:A:369:ILE:CD1	2.17	0.75
1:A:424:ARG:O	1:A:428:ASP:HB3	1.87	0.73
1:A:206:VAL:HG22	1:A:253:LEU:HD22	1.71	0.73
1:A:347:THR:HG23	1:A:349:ARG:H	1.55	0.72
1:A:203:TYR:CE2	1:A:217:LYS:HE2	2.25	0.70
1:A:119:ILE:HD11	1:A:151:ILE:HD13	1.74	0.70
1:A:350:PRO:HB3	1:A:358:ARG:HH22	1.56	0.70
1:A:147:ARG:HD3	1:A:148:LYS:O	1.92	0.70
1:A:249:THR:HG23	1:A:369:ILE:CG2	2.21	0.70
1:A:292:GLU:HG3	1:A:295:LYS:NZ	2.07	0.69
1:A:26:LEU:HD21	1:A:45:LYS:HE2	1.74	0.68
1:A:215:GLN:O	1:A:219:MET:HG3	1.93	0.68
1:A:220:VAL:HB	1:A:224:LEU:HD22	1.75	0.67
1:A:117:LEU:HD13	1:A:187:GLU:O	1.95	0.67
1:A:23:PRO:O	1:A:45:LYS:HE3	1.95	0.66
1:A:254:ILE:CD1	1:A:369:ILE:CD1	2.74	0.65
1:A:335:LEU:O	1:A:336:LYS:HB2	1.96	0.65
1:A:120:ASP:OD2	1:A:190:LYS:HA	1.96	0.64
1:A:445:LEU:HD23	1:A:446:ALA:N	2.13	0.64
1:A:336:LYS:HA	1:A:340:HIS:CE1	2.32	0.64
1:A:378:LEU:HD23	1:A:397:GLU:HA	1.79	0.63
1:A:131:PHE:HA	1:A:135:LEU:HD23	1.80	0.63
1:A:113:ARG:H	1:A:169:ASP:HB2	1.64	0.62
1:A:378:LEU:O	1:A:382:GLN:HG3	1.99	0.62
1:A:122:THR:HG21	1:A:162:GLU:HB2	1.82	0.62
1:A:249:THR:HG23	1:A:369:ILE:HG21	1.80	0.62
1:A:203:TYR:CD2	1:A:261:GLU:HG2	2.34	0.62
1:A:153:LEU:HD11	1:A:160:ALA:HB1	1.81	0.61

Continued on next page...

*Continued from previous page...*

Atom-1	Atom-2	Distance(Å)	Clash(Å)
1:A:100:ILE:HD12	1:A:100:ILE:C	2.20	0.61
1:A:192:GLU:HB3	1:A:194:GLU:OE2	2.01	0.61
1:A:360:PHE:O	1:A:362:ARG:N	2.34	0.60
1:A:297:ALA:HA	1:A:298:PRO:C	2.21	0.60
1:A:197:SER:O	1:A:200:GLU:HG3	2.00	0.60
1:A:105:CYS:O	1:A:108:VAL:HG23	2.01	0.60
1:A:169:ASP:O	1:A:171:SER:N	2.35	0.60
1:A:114:ILE:CD1	1:A:176:VAL:HG22	2.32	0.59
1:A:126:ILE:HD13	1:A:159:ARG:HD2	1.83	0.59
1:A:65:ARG:HH11	1:A:93:ARG:NH1	2.00	0.59
1:A:65:ARG:HH11	1:A:93:ARG:HH12	1.48	0.59
1:A:360:PHE:O	1:A:364:ASP:HB3	2.04	0.58
1:A:324:ILE:O	1:A:327:GLN:HB3	2.03	0.57
1:A:383:ILE:O	1:A:386:LYS:HG2	2.04	0.57
1:A:227:PRO:HB3	1:A:339:ALA:HA	1.86	0.57
1:A:318:GLY:C	1:A:320:VAL:H	2.08	0.57
1:A:275:MET:HG3	1:A:308:ALA:O	2.04	0.57
1:A:53:ARG:O	1:A:72:LEU:HD23	2.05	0.57
1:A:146:ILE:HD12	1:A:165:VAL:HG11	1.86	0.57
1:A:129:ASN:C	1:A:129:ASN:ND2	2.54	0.57
1:A:312:LYS:HE2	1:A:354:ASP:OD2	2.05	0.56
1:A:201:VAL:HG12	1:A:257:ALA:HB2	1.87	0.56
1:A:115:HIS:HB3	3:A:2020:HOH:O	2.04	0.56
1:A:311:PRO:O	1:A:313:ARG:N	2.38	0.56
1:A:389:LYS:HD3	1:A:446:ALA:HB2	1.88	0.56
1:A:183:HIS:HB3	1:A:185:GLU:OE2	2.05	0.56
1:A:347:THR:HG23	1:A:349:ARG:N	2.20	0.56
1:A:233:ILE:HG23	1:A:235:VAL:H	1.71	0.56
1:A:38:VAL:HG21	1:A:72:LEU:HD12	1.88	0.55
1:A:302:PHE:HA	1:A:344:MET:O	2.07	0.55
1:A:185:GLU:H	1:A:185:GLU:CD	2.10	0.55
1:A:89:ARG:HG2	1:A:94:VAL:O	2.07	0.55
1:A:297:ALA:HB2	1:A:341:VAL:HG12	1.88	0.55
1:A:25:ARG:O	1:A:26:LEU:HD23	2.07	0.55
1:A:406:HIS:HD2	1:A:410:ASP:HB3	1.72	0.55
1:A:350:PRO:HB3	1:A:358:ARG:NH2	2.22	0.54
1:A:140:LEU:HG	1:A:141:GLU:HG3	1.88	0.54
1:A:336:LYS:HD3	1:A:336:LYS:N	2.22	0.54
1:A:139:PHE:O	1:A:140:LEU:C	2.46	0.54
1:A:424:ARG:HA	1:A:428:ASP:HB2	1.90	0.54
1:A:164:LYS:HB3	1:A:189:ILE:HD11	1.90	0.53
1:A:120:ASP:OD1	1:A:121:ASP:N	2.41	0.53

*Continued on next page...*



*Continued from previous page...*

Atom-1	Atom-2	Distance(Å)	Clash(Å)
1:A:353:ILE:CG2	1:A:357:LEU:HD12	2.33	0.53
1:A:291:GLU:O	1:A:295:LYS:HG3	2.09	0.53
1:A:445:LEU:HD23	1:A:445:LEU:C	2.29	0.53
1:A:226:HIS:N	1:A:227:PRO:HD3	2.24	0.53
1:A:292:GLU:HG3	1:A:295:LYS:HZ1	1.74	0.52
1:A:100:ILE:HD12	1:A:100:ILE:O	2.09	0.52
1:A:249:THR:CG2	1:A:369:ILE:CG2	2.87	0.52
1:A:209:CYS:C	1:A:210:ARG:HG3	2.30	0.52
1:A:249:THR:HG23	1:A:369:ILE:HG22	1.91	0.52
1:A:60:LYS:HG2	1:A:66:GLU:HG2	1.92	0.52
1:A:292:GLU:HA	1:A:295:LYS:HE3	1.92	0.51
1:A:126:ILE:HG12	1:A:159:ARG:NH1	2.26	0.51
1:A:426:LYS:O	1:A:427:MET:C	2.49	0.51
1:A:414:LEU:HD21	1:A:456:LEU:CD2	2.41	0.51
1:A:230:PHE:HA	1:A:233:ILE:HG22	1.92	0.51
1:A:53:ARG:NH1	1:A:72:LEU:HD22	2.26	0.51
1:A:320:VAL:O	1:A:324:ILE:HG13	2.11	0.51
1:A:129:ASN:HD21	1:A:131:PHE:HB3	1.75	0.50
1:A:224:LEU:HD12	1:A:298:PRO:HB3	1.94	0.50
1:A:349:ARG:HB2	1:A:350:PRO:HD2	1.94	0.50
1:A:358:ARG:O	1:A:359:ARG:C	2.49	0.50
1:A:199:ASN:CG	1:A:199:ASN:O	2.50	0.50
1:A:385:THR:HG22	1:A:388:MET:HE2	1.93	0.50
1:A:243:LEU:HB3	1:A:251:LYS:HD3	1.93	0.49
1:A:265:PHE:CD2	1:A:296:ASN:HB2	2.47	0.49
1:A:56:THR:HG22	1:A:70:ILE:HD13	1.93	0.49
1:A:164:LYS:HG3	1:A:165:VAL:N	2.28	0.49
1:A:305:GLU:O	1:A:307:ASP:N	2.46	0.49
1:A:219:MET:HE3	1:A:241:ILE:HD13	1.95	0.48
1:A:209:CYS:O	1:A:210:ARG:HG3	2.13	0.48
1:A:278:LEU:HG	1:A:281:GLU:OE1	2.14	0.48
1:A:364:ASP:OD1	1:A:365:ARG:HG2	2.14	0.48
1:A:358:ARG:HH11	1:A:358:ARG:HG3	1.78	0.48
1:A:310:ALA:CB	1:A:357:LEU:HD11	2.44	0.47
1:A:358:ARG:NH1	1:A:358:ARG:HG3	2.28	0.47
1:A:56:THR:HG22	1:A:70:ILE:CD1	2.44	0.47
1:A:251:LYS:HD2	1:A:346:ALA:HB1	1.96	0.47
1:A:158:MET:CE	1:A:419:ALA:HB1	2.44	0.47
1:A:203:TYR:CD2	1:A:217:LYS:HE2	2.50	0.47
1:A:192:GLU:O	1:A:195:GLU:N	2.42	0.47
1:A:335:LEU:C	1:A:336:LYS:HD3	2.36	0.47
1:A:91:ASN:ND2	1:A:151:ILE:H	2.04	0.47

*Continued on next page...*

*Continued from previous page...*

Atom-1	Atom-2	Distance(Å)	Clash(Å)
1:A:68:VAL:HG23	1:A:147:ARG:HB2	1.98	0.46
1:A:407:VAL:O	1:A:410:ASP:HB2	2.15	0.46
1:A:40:SER:HB3	1:A:74:ASP:HB2	1.96	0.46
1:A:52:PHE:O	1:A:54:GLY:N	2.48	0.46
1:A:424:ARG:HA	1:A:428:ASP:CB	2.45	0.46
1:A:206:VAL:CG2	1:A:253:LEU:HD22	2.44	0.46
1:A:408:GLY:HA3	2:A:800:ADP:C8	2.51	0.46
1:A:194:GLU:N	1:A:194:GLU:CD	2.59	0.46
1:A:41:LEU:HD21	1:A:82:ILE:HD12	1.97	0.46
1:A:312:LYS:HE2	1:A:354:ASP:CG	2.37	0.46
1:A:148:LYS:HG2	1:A:149:GLY:N	2.31	0.46
1:A:406:HIS:CD2	1:A:410:ASP:HB3	2.49	0.45
1:A:347:THR:HG23	1:A:348:ASN:N	2.30	0.45
1:A:423:ILE:HA	1:A:445:LEU:HD11	1.98	0.45
1:A:325:VAL:O	1:A:328:LEU:N	2.49	0.45
1:A:155:ARG:CZ	1:A:386:LYS:HD2	2.46	0.45
1:A:21:ASN:O	1:A:22:ARG:HB2	2.17	0.45
1:A:22:ARG:HA	1:A:23:PRO:HD2	1.72	0.45
1:A:24:ASN:O	1:A:101:SER:HA	2.17	0.45
1:A:312:LYS:HE2	1:A:354:ASP:OD1	2.16	0.45
1:A:335:LEU:O	1:A:336:LYS:HE3	2.16	0.45
1:A:32:ILE:HA	1:A:32:ILE:HD13	1.85	0.45
1:A:329:LEU:HD23	1:A:357:LEU:HD23	1.99	0.45
1:A:27:ILE:HD13	1:A:99:VAL:CG1	2.39	0.45
1:A:414:LEU:HD21	1:A:456:LEU:HD21	1.99	0.45
1:A:292:GLU:HG3	1:A:295:LYS:HZ2	1.80	0.44
1:A:318:GLY:C	1:A:320:VAL:N	2.71	0.44
1:A:360:PHE:C	1:A:362:ARG:H	2.20	0.44
1:A:53:ARG:CZ	1:A:72:LEU:HD22	2.48	0.44
1:A:270:ASN:HD22	1:A:304:ASP:HB3	1.83	0.44
1:A:91:ASN:HD21	1:A:151:ILE:N	2.06	0.43
1:A:117:LEU:HD12	1:A:189:ILE:HG23	1.98	0.43
1:A:65:ARG:NH1	1:A:93:ARG:HH12	2.15	0.43
1:A:239:ARG:NH1	1:A:336:LYS:NZ	2.65	0.43
1:A:56:THR:HA	1:A:69:CYS:O	2.18	0.43
1:A:28:VAL:HG12	1:A:98:ASP:O	2.17	0.43
1:A:258:VAL:O	1:A:262:THR:HG23	2.17	0.43
1:A:241:ILE:HB	1:A:344:MET:HG2	2.00	0.43
1:A:384:HIS:HE1	2:A:800:ADP:N3	2.15	0.43
1:A:244:TYR:CE2	1:A:350:PRO:HG3	2.54	0.43
1:A:185:GLU:O	1:A:187:GLU:N	2.43	0.43
1:A:28:VAL:HA	1:A:82:ILE:HG23	2.00	0.42

*Continued on next page...*

Continued from previous page...

Atom-1	Atom-2	Distance(Å)	Clash(Å)
1:A:353:ILE:CG2	1:A:354:ASP:N	2.81	0.42
1:A:146:ILE:HG13	1:A:146:ILE:O	2.19	0.42
1:A:198:LEU:C	1:A:200:GLU:H	2.22	0.42
1:A:213:LEU:O	1:A:217:LYS:HG3	2.19	0.42
1:A:238:PRO:HB3	1:A:365:ARG:HH11	1.85	0.42
1:A:107:ASP:O	1:A:109:LYS:NZ	2.50	0.42
1:A:131:PHE:HD1	1:A:135:LEU:HB2	1.84	0.42
1:A:312:LYS:O	1:A:313:ARG:C	2.58	0.42
1:A:219:MET:CE	1:A:241:ILE:HD13	2.49	0.42
1:A:335:LEU:HD23	1:A:335:LEU:HA	1.90	0.42
1:A:235:VAL:HG12	1:A:236:LYS:N	2.34	0.42
1:A:136:LYS:CB	1:A:137:PRO:HD3	2.50	0.42
1:A:152:PHE:CZ	1:A:163:PHE:HB2	2.55	0.42
1:A:201:VAL:CG1	1:A:253:LEU:HD23	2.49	0.41
1:A:43:GLN:N	1:A:44:PRO:HD2	2.35	0.41
1:A:220:VAL:HB	1:A:224:LEU:CD2	2.47	0.41
1:A:38:VAL:HG22	1:A:39:VAL:N	2.35	0.41
1:A:112:LYS:H	1:A:170:PRO:HD3	1.85	0.41
1:A:148:LYS:HE2	1:A:166:VAL:O	2.20	0.41
1:A:229:LEU:O	1:A:233:ILE:HB	2.21	0.41
1:A:158:MET:HE1	1:A:419:ALA:HB1	2.03	0.41
1:A:324:ILE:O	1:A:325:VAL:C	2.57	0.40
1:A:369:ILE:HD13	1:A:369:ILE:HG21	1.88	0.40
1:A:424:ARG:C	1:A:428:ASP:HB3	2.39	0.40

There are no symmetry-related clashes.

## 5.3 Torsion angles

### 5.3.1 Protein backbone ⓘ

In the following table, the Percentiles column shows the percent Ramachandran outliers of the chain as a percentile score with respect to all X-ray entries followed by that with respect to entries of similar resolution. The Analysed column shows the number of residues for which the backbone conformation was analysed, and the total number of residues.

Mol	Chain	Analysed	Favoured	Allowed	Outliers	Percentiles
1	A	436/458 (95%)	366 (84%)	45 (10%)	25 (6%)	<b>3</b> <b>8</b>

All (25) Ramachandran outliers are listed below:

Mol	Chain	Res	Type
1	A	53	ARG
1	A	186	GLY
1	A	306	LEU
1	A	312	LYS
1	A	338	ARG
1	A	360	PHE
1	A	426	LYS
1	A	22	ARG
1	A	140	LEU
1	A	141	GLU
1	A	185	GLU
1	A	304	ASP
1	A	313	ARG
1	A	335	LEU
1	A	351	ASN
1	A	361	GLY
1	A	404	HIS
1	A	436	THR
1	A	193	ASP
1	A	311	PRO
1	A	319	GLU
1	A	359	ARG
1	A	435	GLU
1	A	350	PRO
1	A	437	ILE

### 5.3.2 Protein sidechains ⓘ

In the following table, the Percentiles column shows the percent sidechain outliers of the chain as a percentile score with respect to all X-ray entries followed by that with respect to entries of similar resolution. The Analysed column shows the number of residues for which the sidechain conformation was analysed, and the total number of residues.

Mol	Chain	Analysed	Rotameric	Outliers	Percentiles
1	A	352/390 (90%)	331 (94%)	21 (6%)	27 63

All (21) residues with a non-rotameric sidechain are listed below:

Mol	Chain	Res	Type
1	A	28	VAL
1	A	45	LYS
1	A	109	LYS

*Continued on next page...*

*Continued from previous page...*

Mol	Chain	Res	Type
1	A	112	LYS
1	A	114	ILE
1	A	129	ASN
1	A	147	ARG
1	A	155	ARG
1	A	164	LYS
1	A	194	GLU
1	A	212	GLN
1	A	224	LEU
1	A	243	LEU
1	A	249	THR
1	A	273	GLU
1	A	314	GLU
1	A	336	LYS
1	A	340	HIS
1	A	341	VAL
1	A	347	THR
1	A	458	GLN

Some sidechains can be flipped to improve hydrogen bonding and reduce clashes. All (10) such sidechains are listed below:

Mol	Chain	Res	Type
1	A	43	GLN
1	A	90	ASN
1	A	91	ASN
1	A	103	GLN
1	A	129	ASN
1	A	285	ASN
1	A	340	HIS
1	A	348	ASN
1	A	384	HIS
1	A	406	HIS

### 5.3.3 RNA ⓘ

There are no RNA chains in this entry.

## 5.4 Non-standard residues in protein, DNA, RNA chains ⓘ

There are no non-standard protein/DNA/RNA residues in this entry.

## 5.5 Carbohydrates ⓘ

There are no carbohydrates in this entry.

## 5.6 Ligand geometry ⓘ

1 ligand is modelled in this entry.

In the following table, the Counts columns list the number of bonds (or angles) for which Mogul statistics could be retrieved, the number of bonds (or angles) that are observed in the model and the number of bonds (or angles) that are defined in the chemical component dictionary. The Link column lists molecule types, if any, to which the group is linked. The Z score for a bond length (or angle) is the number of standard deviations the observed value is removed from the expected value. A bond length (or angle) with  $|Z| > 2$  is considered an outlier worth inspection. RMSZ is the root-mean-square of all Z scores of the bond lengths (or angles).

Mol	Type	Chain	Res	Link	Bond lengths			Bond angles		
					Counts	RMSZ	$\# Z  > 2$	Counts	RMSZ	$\# Z  > 2$
2	ADP	A	800	-	29,29,29	1.52	5 (17%)	45,45,45	1.46	4 (8%)

In the following table, the Chirals column lists the number of chiral outliers, the number of chiral centers analysed, the number of these observed in the model and the number defined in the chemical component dictionary. Similar counts are reported in the Torsion and Rings columns. '-' means no outliers of that kind were identified.

Mol	Type	Chain	Res	Link	Chirals	Torsions	Rings
2	ADP	A	800	-	-	0/16/32/32	0/1/3/3

All (5) bond length outliers are listed below:

Mol	Chain	Res	Type	Atoms	Z	Observed(Å)	Ideal(Å)
2	A	800	ADP	C8-N7	-3.52	1.27	1.34
2	A	800	ADP	PB-O3B	2.95	1.65	1.54
2	A	800	ADP	O4'-C1'	2.71	1.45	1.41
2	A	800	ADP	C8-N9	-2.44	1.33	1.36
2	A	800	ADP	O4'-C4'	2.22	1.50	1.45

All (4) bond angle outliers are listed below:

Mol	Chain	Res	Type	Atoms	Z	Observed(°)	Ideal(°)
2	A	800	ADP	O4'-C4'-C5'	-7.17	83.75	109.36
2	A	800	ADP	C5'-C4'-C3'	-3.04	103.05	115.21
2	A	800	ADP	N3-C2-N1	-2.40	126.70	128.71
2	A	800	ADP	O2B-PB-O1B	2.22	117.69	110.44

There are no chirality outliers.

There are no torsion outliers.

There are no ring outliers.

## 5.7 Other polymers ⓘ

There are no such residues in this entry.

## 5.8 Polymer linkage issues

There are no chain breaks in this entry.

## 6 Fit of model and data ⓘ

### 6.1 Protein, DNA and RNA chains ⓘ

In the following table, the column labelled ‘#RSRZ> 2’ contains the number (and percentage) of RSRZ outliers, followed by percent RSRZ outliers for the chain as percentile scores relative to all X-ray entries and entries of similar resolution. The OWAB column contains the minimum, median, 95<sup>th</sup> percentile and maximum values of the occupancy-weighted average B-factor per residue. The column labelled ‘Q< 0.9’ lists the number of (and percentage) of residues with an average occupancy less than 0.9.

Mol	Chain	Analysed	<RSRZ>	#RSRZ>2		OWAB(Å <sup>2</sup> )	Q<0.9
1	A	436/458 (95%)	0.03	24 (5%)	24 29	7, 28, 58, 86	0

All (24) RSRZ outliers are listed below:

Mol	Chain	Res	Type	RSRZ
1	A	436	THR	5.9
1	A	434	ASP	5.6
1	A	435	GLU	4.7
1	A	186	GLY	4.3
1	A	279	ALA	4.3
1	A	316	THR	4.3
1	A	193	ASP	4.2
1	A	314	GLU	3.8
1	A	312	LYS	3.3
1	A	351	ASN	3.2
1	A	187	GLU	3.0
1	A	76	THR	3.0
1	A	21	ASN	2.8
1	A	124	GLU	2.7
1	A	437	ILE	2.7
1	A	315	LYS	2.6
1	A	350	PRO	2.5
1	A	244	TYR	2.5
1	A	173	TYR	2.4
1	A	75	ASP	2.3
1	A	50	GLN	2.3
1	A	360	PHE	2.1
1	A	106	PRO	2.1
1	A	129	ASN	2.0



## 6.2 Non-standard residues in protein, DNA, RNA chains ⓘ

There are no non-standard protein/DNA/RNA residues in this entry.

## 6.3 Carbohydrates ⓘ

There are no carbohydrates in this entry.

## 6.4 Ligands ⓘ

In the following table, the Atoms column lists the number of modelled atoms in the group and the number defined in the chemical component dictionary. LLDF column lists the quality of electron density of the group with respect to its neighbouring residues in protein, DNA or RNA chains. The B-factors column lists the minimum, median, 95<sup>th</sup> percentile and maximum values of B factors of atoms in the group. The column labelled 'Q< 0.9' lists the number of atoms with occupancy less than 0.9.

Mol	Type	Chain	Res	Atoms	RSR	LLDF	B-factors(Å <sup>2</sup> )	Q<0.9
2	ADP	A	800	27/27	0.16	-0.26	27,34,48,49	0

## 6.5 Other polymers ⓘ

There are no such residues in this entry.