



Full wwPDB X-ray Structure Validation Report

Feb 28, 2014 – 06:14 PM GMT

PDB ID : 2E3T
Title : Crystal structure of rat xanthine oxidoreductase mutant (W335A and F336L)
Authors : Asai, R.; Nishino, T.; Matsumura, T.; Okamoto, K.; Pai, E.F.; Nishino, T.
Deposited on : 2006-11-28
Resolution : 2.28 Å(reported)

This is a full wwPDB validation report for a publicly released PDB entry.
We welcome your comments at validation@mail.wwpdb.org
A user guide is available at <http://wwpdb.org/ValidationPDFNotes.html>

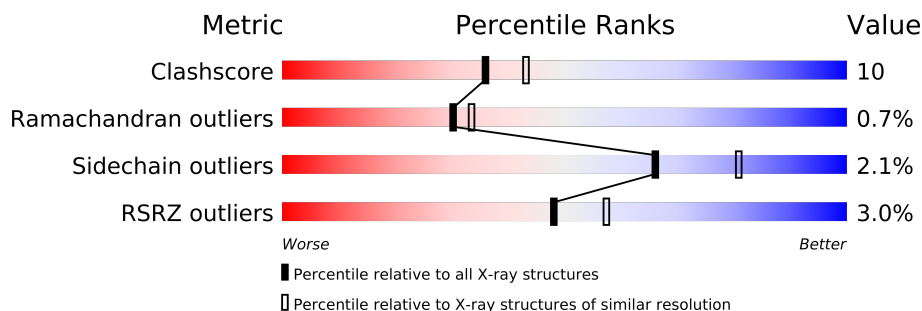
The following versions of software and data (see [references](#)) were used in the production of this report:

MolProbity : 4.02b-467
Mogul : 1.15 2013
Xtriage (Phenix) : dev-1323
EDS : stable22639
Percentile statistics : 21963
Refmac : 5.8.0049
CCP4 : 6.3.0 (Settle)
Ideal geometry (proteins) : Engh & Huber (2001)
Ideal geometry (DNA, RNA) : Parkinson et. al. (1996)
Validation Pipeline (wwPDB-VP) : stable22683

1 Overall quality at a glance

The reported resolution of this entry is 2.28 Å.

Percentile scores (ranging between 0-100) for global validation metrics of the entry are shown in the following graphic. The table shows the number of entries on which the scores are based.



Metric	Whole archive (#Entries)	Similar resolution (#Entries, resolution range(Å))
Clashscore	79885	4801 (2.30-2.26)
Ramachandran outliers	78287	4729 (2.30-2.26)
Sidechain outliers	78261	4728 (2.30-2.26)
RSRZ outliers	66119	3864 (2.30-2.26)

The table below summarises the geometric issues observed across the polymeric chains and their fit to the electron density. The red, orange, yellow and green segments on the lower bar indicate the fraction of residues that contain outliers for ≥ 3 , 2, 1 and 0 types of geometric quality criteria. The upper red bar (where present) indicates the fraction of residues that have poor fit to the electron density.

Mol	Chain	Length	Quality of chain
1	A	1331	
1	B	1331	

The following table lists non-polymeric compounds that are outliers for geometric or electron-density-fit criteria:

Mol	Type	Chain	Res	Geometry	Electron density
3	PO4	A	6001	-	X
3	PO4	A	6009	-	X

2 Entry composition ⓘ

There are 8 unique types of molecules in this entry. The entry contains 21444 atoms, of which 0 are hydrogen and 0 are deuterium.

In the tables below, the ZeroOcc column contains the number of atoms modelled with zero occupancy, the AltConf column contains the number of residues with at least one atom in alternate conformation and the Trace column contains the number of residues modelled with at most 2 atoms.

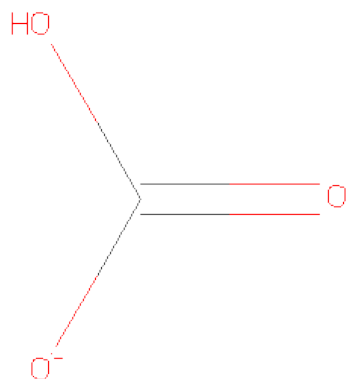
- Molecule 1 is a protein called Xanthine dehydrogenase/oxidase.

Mol	Chain	Residues	Atoms					ZeroOcc	AltConf	Trace
1	A	1291	Total	C	N	O	S	0	0	0
			9963	6309	1715	1875	64			
1	B	1281	Total	C	N	O	S	0	0	0
			9877	6255	1702	1858	62			

There are 4 discrepancies between the modelled and reference sequences:

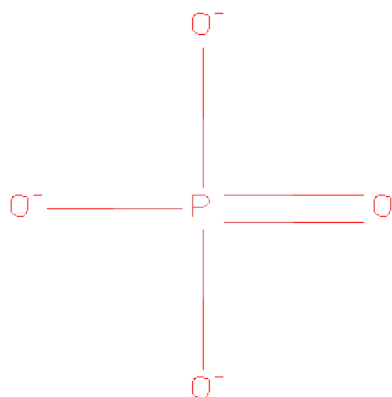
Chain	Residue	Modelled	Actual	Comment	Reference
A	335	ALA	TRP	ENGINEERED	UNP P22985
A	336	LEU	PHE	ENGINEERED	UNP P22985
B	335	ALA	TRP	ENGINEERED	UNP P22985
B	336	LEU	PHE	ENGINEERED	UNP P22985

- Molecule 2 is BICARBONATE ION (three-letter code: BCT) (formula: CHO_3).



Mol	Chain	Residues	Atoms	ZeroOcc	AltConf
2	A	1	Total C O 4 1 3	0	0
2	B	1	Total C O 4 1 3	0	0

- Molecule 3 is PHOSPHATE ION (three-letter code: PO4) (formula: O₄P).



Mol	Chain	Residues	Atoms	ZeroOcc	AltConf
3	A	1	Total O P 5 4 1	0	0
3	A	1	Total O P 5 4 1	0	0
3	B	1	Total O P 5 4 1	0	0
3	A	1	Total O P 5 4 1	0	0
3	B	1	Total O P 5 4 1	0	0
3	A	1	Total O P 5 4 1	0	0
3	B	1	Total O P 5 4 1	0	0
3	A	1	Total O P 5 4 1	0	0
3	A	1	Total O P 5 4 1	0	0
3	B	1	Total O P 5 4 1	0	0

Continued on next page...

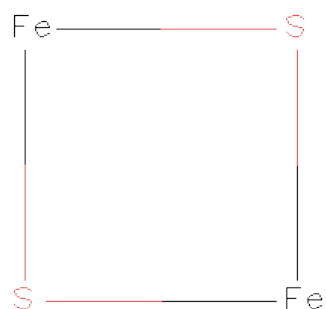
Continued from previous page...

Mol	Chain	Residues	Atoms			ZeroOcc	AltConf
3	B	1	Total	O	P	0	0
			5	4	1		

- Molecule 4 is CALCIUM ION (three-letter code: CA) (formula: Ca).

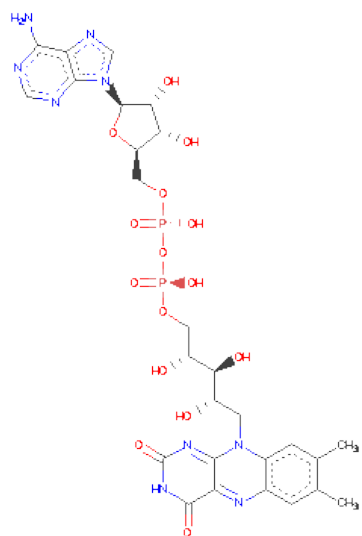
Mol	Chain	Residues	Atoms		ZeroOcc	AltConf
4	B	2	Total	Ca	0	0
			2	2		
4	A	2	Total	Ca	0	0
			2	2		

- Molecule 5 is FE2/S2 (INORGANIC) CLUSTER (three-letter code: FES) (formula: Fe₂S₂).



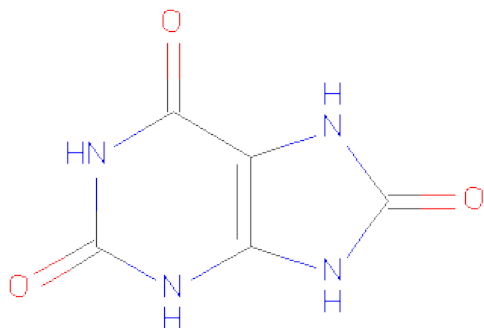
Mol	Chain	Residues	Atoms			ZeroOcc	AltConf
5	A	1	Total	Fe	S	0	0
			4	2	2		
5	A	1	Total	Fe	S	0	0
			4	2	2		
5	B	1	Total	Fe	S	0	0
			4	2	2		
5	B	1	Total	Fe	S	0	0
			4	2	2		

- Molecule 6 is FLAVIN-ADENINE DINUCLEOTIDE (three-letter code: FAD) (formula: C₂₇H₃₃N₉O₁₅P₂).



Mol	Chain	Residues	Atoms					ZeroOcc	AltConf
6	A	1	Total	C	N	O	P	0	0
			53	27	9	15	2		
6	B	1	Total	C	N	O	P	0	0
			53	27	9	15	2		

- Molecule 7 is URIC ACID (three-letter code: URC) (formula: $C_5H_4N_4O_3$).



Mol	Chain	Residues	Atoms				ZeroOcc	AltConf
7	A	1	Total	C	N	O	0	0
			12	5	4	3		
7	B	1	Total	C	N	O	0	0
			12	5	4	3		

- Molecule 8 is water.

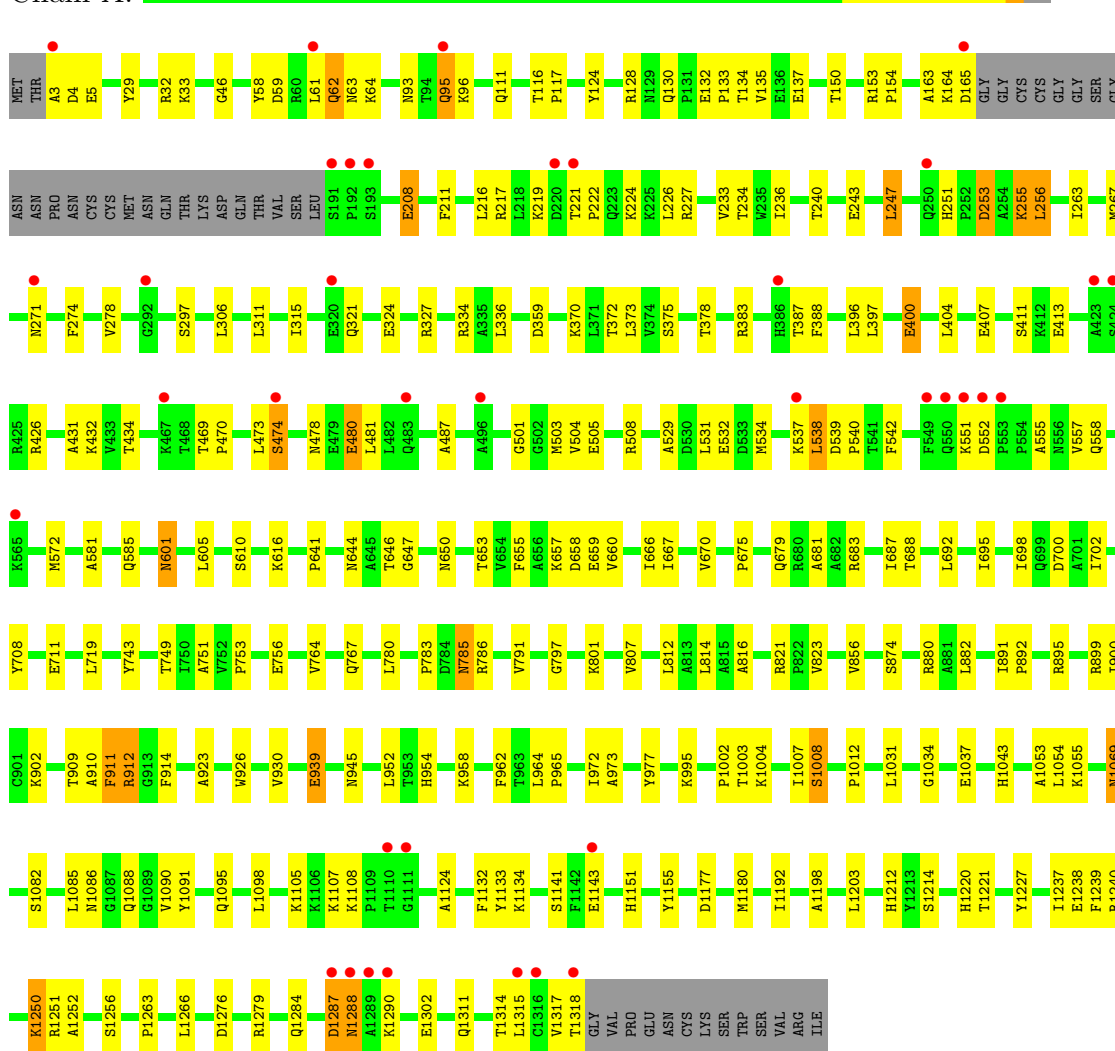
Mol	Chain	Residues	Atoms		ZeroOcc	AltConf
8	A	667	Total 667	O 667	0	0
8	B	724	Total 724	O 724	0	0

3 Residue-property plots

These plots are drawn for all protein, RNA and DNA chains in the entry. The first graphic for a chain summarises the proportions of errors displayed in the second graphic. The second graphic shows the sequence view annotated by issues in geometry and electron density. Residues are color-coded according to the number of geometric quality criteria for which they contain at least one outlier: green = 0, yellow = 1, orange = 2 and red = 3 or more. A red dot above a residue indicates a poor fit to the electron density ($RSRZ > 2$). Stretches of 2 or more consecutive residues without any outlier are shown as a green connector. Residues present in the sample, but not in the model, are shown in grey.

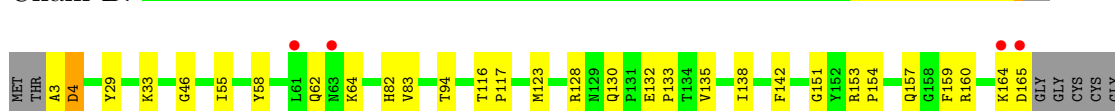
• Molecule 1: Xanthine dehydrogenase/oxidase

Chain A:



• Molecule 1: Xanthine dehydrogenase/oxidase

Chain B:





4 Data and refinement statistics

Property	Value	Source
Space group	P 21 21 21	Depositor
Cell constants a, b, c, α , β , γ	101.07Å 139.51Å 222.30Å 90.00° 90.00° 90.00°	Depositor
Resolution (Å)	25.00 – 2.28 24.94 – 2.28	Depositor EDS
% Data completeness (in resolution range)	100.0 (25.00-2.28) 95.8 (24.94-2.28)	Depositor EDS
R_{merge}	(Not available)	Depositor
R_{sym}	0.08	Depositor
$\langle I/\sigma(I) \rangle$ ¹	5.84 (at 2.28Å)	Xtriage
Refinement program	CNS 1.0	Depositor
R, R_{free}	0.185 , 0.229 0.181 , (Not available)	Depositor DCC
R_{free} test set	No test flags present.	DCC
Wilson B-factor (Å ²)	27.2	Xtriage
Anisotropy	0.538	Xtriage
Bulk solvent k_{sol} (e/Å ³), B_{sol} (Å ²)	0.35 , 29.5	EDS
Estimated twinning fraction	No twinning to report.	Xtriage
L-test for twinning	$\langle L \rangle = 0.50$, $\langle L^2 \rangle = 0.34$	Xtriage
Outliers	0 of 143383 reflections	Xtriage
F_o, F_c correlation	0.95	EDS
Total number of atoms	21444	wwPDB-VP
Average B, all atoms (Å ²)	31.0	wwPDB-VP

Xtriage's analysis on translational NCS is as follows: *The largest off-origin peak in the Patterson function is 2.45% of the height of the origin peak. No significant pseudotranslation is detected.*

¹Intensities estimated from amplitudes.

5 Model quality

5.1 Standard geometry

Bond lengths and bond angles in the following residue types are not validated in this section: URC, PO4, FES, BCT, CA, FAD

The Z score for a bond length (or angle) is the number of standard deviations the observed value is removed from the expected value. A bond length (or angle) with $|Z| > 5$ is considered an outlier worth inspection. RMSZ is the root-mean-square of all Z scores of the bond lengths (or angles).

Mol	Chain	Bond lengths		Bond angles	
		RMSZ	# Z >5	RMSZ	# Z >5
1	A	0.32	0/10170	0.60	0/13763
1	B	0.33	0/10081	0.61	0/13642
All	All	0.33	0/20251	0.60	0/27405

There are no bond length outliers.

There are no bond angle outliers.

There are no chirality outliers.

There are no planarity outliers.

5.2 Close contacts

In the following table, the Non-H and H(model) columns list the number of non-hydrogen atoms and hydrogen atoms in the chain respectively. The H(added) column lists the number of hydrogens added by MolProbity. The Clashes column lists the number of clashes within the asymmetric unit, and the number in parentheses is this value normalized per 1000 atoms of the molecule in the chain. The Symm-Clashes column gives symmetry related clashes, in the same way as for the Clashes column.

Mol	Chain	Non-H	H(model)	H(added)	Clashes	Symm-Clashes
1	A	9963	0	9972	208	0
1	B	9877	0	9888	211	0
2	A	4	0	0	0	0
2	B	4	0	0	0	0
3	A	30	0	0	1	0
3	B	25	0	0	1	0
4	A	2	0	0	0	0
4	B	2	0	0	0	0
5	A	8	0	0	1	0
5	B	8	0	0	1	0

Continued on next page...

Continued from previous page...

Mol	Chain	Non-H	H(model)	H(added)	Clashes	Symm-Clashes
6	A	53	0	28	1	0
6	B	53	0	26	3	0
7	A	12	0	4	0	0
7	B	12	0	4	0	0
8	A	667	0	0	7	0
8	B	724	0	0	7	0
All	All	21444	0	19922	415	0

Clashscore is defined as the number of clashes calculated for the entry per 1000 atoms (including hydrogens) of the entry. The overall clashscore for this entry is 10.

All (415) close contacts within the same asymmetric unit are listed below.

Atom-1	Atom-2	Distance(Å)	Clash(Å)
6:B:3003:FAD:C3B	6:B:3003:FAD:C2B	1.79	1.41
1:B:3:ALA:HB1	1:B:227:ARG:H	1.16	1.05
1:A:3:ALA:HB1	1:A:227:ARG:H	1.24	1.01
1:B:646:THR:HG22	1:B:647:GLY:H	1.28	0.97
1:A:646:THR:HG22	1:A:647:GLY:H	1.30	0.95
1:B:359:ASP:HA	1:B:434:THR:HG21	1.54	0.89
1:B:3:ALA:HB1	1:B:227:ARG:N	1.86	0.89
1:B:130:GLN:HE21	1:B:132:GLU:H	1.16	0.88
1:B:785:ASN:HD21	1:B:786:ARG:NH1	1.73	0.86
1:B:252:PRO:HG3	1:B:400:GLU:HG2	1.58	0.85
1:A:785:ASN:HD21	1:A:786:ARG:HH11	1.24	0.85
1:B:1088:GLN:HG2	1:B:1133:TYR:CD1	2.13	0.84
1:B:785:ASN:HD21	1:B:786:ARG:HH11	1.21	0.84
1:A:1088:GLN:HG2	1:A:1133:TYR:CD1	2.12	0.83
1:A:359:ASP:HA	1:A:434:THR:HG21	1.58	0.83
1:A:3:ALA:N	1:A:224:LYS:HZ2	1.77	0.81
1:A:130:GLN:HE21	1:A:132:GLU:H	1.29	0.81
1:A:555:ALA:HB3	1:A:1238:GLU:HG3	1.62	0.80
1:A:749:THR:HG22	1:A:812:LEU:HD23	1.63	0.80
1:A:939:GLU:HG2	1:A:977:TYR:CE2	2.17	0.79
1:A:557:VAL:HG12	1:A:1240:ARG:HG2	1.65	0.78
1:A:785:ASN:HD21	1:A:786:ARG:NH1	1.82	0.77
1:B:321:GLN:HG2	1:B:413:GLU:OE2	1.85	0.77
1:B:932:ILE:O	1:B:1290:LYS:HE3	1.84	0.76
1:B:785:ASN:ND2	1:B:786:ARG:HH11	1.82	0.76
1:B:650:ASN:HD21	1:B:778:LYS:NZ	1.83	0.76
1:A:1141:SER:OG	1:A:1143:GLU:HG2	1.87	0.75
1:B:332:GLN:HE21	1:B:332:GLN:HA	1.53	0.74
1:A:785:ASN:ND2	1:A:786:ARG:HH11	1.86	0.74

Continued on next page...

Continued from previous page...

Atom-1	Atom-2	Distance(Å)	Clash(Å)
1:B:719:LEU:HD11	1:B:895:ARG:HB3	1.70	0.74
1:A:388:PHE:HA	1:A:396:LEU:HG	1.71	0.72
1:B:58:TYR:CE2	1:B:219:LYS:HG3	2.24	0.72
1:B:531:LEU:HA	1:B:540:PRO:HD2	1.73	0.71
1:B:749:THR:HG22	1:B:812:LEU:HD23	1.72	0.71
1:B:749:THR:HG22	1:B:812:LEU:CD2	2.20	0.71
1:B:939:GLU:HG2	1:B:977:TYR:CE2	2.24	0.71
1:B:1102:GLU:HB3	1:B:1103:PRO:HD3	1.72	0.71
1:A:749:THR:HG22	1:A:812:LEU:CD2	2.20	0.70
1:A:487:ALA:HA	1:A:1318:THR:HG23	1.73	0.69
1:A:3:ALA:HB1	1:A:227:ARG:N	2.05	0.69
1:B:1315:LEU:HA	1:B:1320:VAL:O	1.92	0.69
1:A:719:LEU:HD11	1:A:895:ARG:HB2	1.75	0.69
1:A:537:LYS:O	1:A:538:LEU:HB3	1.93	0.67
1:A:61:LEU:O	1:A:62:GLN:HG3	1.94	0.67
1:A:1124:ALA:HB3	1:B:1134:LYS:HD3	1.77	0.67
1:B:1290:LYS:O	1:B:1290:LYS:HG2	1.94	0.66
1:A:375:SER:HB3	1:A:378:THR:OG1	1.95	0.66
1:B:650:ASN:HD21	1:B:778:LYS:HZ1	1.44	0.65
1:A:679:GLN:NE2	1:A:683:ARG:HH22	1.94	0.65
1:A:1279:ARG:HH21	1:A:1290:LYS:HD3	1.61	0.65
1:A:666:ILE:CD1	1:A:807:VAL:HG13	2.27	0.64
1:B:426:ARG:HD3	1:B:1212:HIS:CG	2.32	0.64
1:B:123:MET:HE2	1:B:159:PHE:CD2	2.33	0.64
1:B:1208:MET:HE2	1:B:1234:SER:HB3	1.79	0.64
1:B:271:ASN:HB3	1:B:683:ARG:HH11	1.62	0.64
1:B:646:THR:HG22	1:B:647:GLY:N	2.07	0.64
1:A:646:THR:HG22	1:A:647:GLY:N	2.09	0.63
1:B:531:LEU:CA	1:B:540:PRO:HD2	2.28	0.62
1:A:646:THR:HG23	8:A:7667:HOH:O	1.99	0.62
1:B:1082:SER:HB2	3:B:6003:PO4:O2	1.98	0.62
1:B:271:ASN:CG	1:B:683:ARG:HD3	2.19	0.62
1:B:601:ASN:H	1:B:601:ASN:HD22	1.48	0.62
1:A:93:ASN:OD1	1:A:95:GLN:HG3	1.99	0.61
1:B:715:GLU:OE2	1:B:895:ARG:HD2	2.01	0.61
1:A:882:LEU:O	1:A:954:HIS:HE1	1.83	0.61
1:A:856:VAL:HG12	1:A:945:ASN:OD1	2.01	0.60
6:B:3003:FAD:O2B	6:B:3003:FAD:C3B	2.45	0.60
1:B:544:SER:HB2	1:B:994:LYS:HG3	1.84	0.60
1:A:240:THR:OG1	1:A:243:GLU:HG3	2.02	0.59
1:B:603:LEU:HD21	1:B:821:ARG:NH2	2.18	0.59
1:B:650:ASN:ND2	1:B:778:LYS:NZ	2.49	0.59

Continued on next page...

Continued from previous page...

Atom-1	Atom-2	Distance(Å)	Clash(Å)
1:B:271:ASN:HB3	1:B:683:ARG:NH1	2.17	0.59
1:A:1004:LYS:HG3	1:A:1155:TYR:CE2	2.38	0.59
1:B:761:GLU:HA	1:B:788:VAL:HG13	1.85	0.59
1:A:616:LYS:HD3	1:A:659:GLU:HB3	1.85	0.58
1:B:812:LEU:HD21	1:B:823:VAL:O	2.03	0.58
1:A:1311:GLN:HB2	1:A:1317:VAL:HG13	1.85	0.58
1:A:601:ASN:H	1:A:601:ASN:HD22	1.51	0.58
1:A:271:ASN:OD1	1:A:683:ARG:CZ	2.51	0.58
1:A:164:LYS:NZ	1:A:164:LYS:HB2	2.19	0.57
1:B:478:ASN:HD21	1:B:480:GLU:HG3	1.68	0.57
1:B:130:GLN:HE21	1:B:132:GLU:N	1.96	0.57
1:B:1088:GLN:HG2	1:B:1133:TYR:CE1	2.39	0.57
1:B:123:MET:CE	1:B:138:ILE:HG23	2.33	0.57
1:B:486:CYS:HA	1:B:512:LEU:HD22	1.85	0.57
1:A:370:LYS:HE2	1:A:383:ARG:HE	1.69	0.57
1:B:606:ARG:HD3	1:B:679:GLN:HA	1.86	0.57
1:B:646:THR:HG23	8:B:7280:HOH:O	2.05	0.57
1:B:886:ASP:OD1	1:B:1004:LYS:NZ	2.38	0.57
1:A:306:LEU:HD23	1:A:306:LEU:O	2.05	0.56
1:B:749:THR:O	1:B:812:LEU:HD22	2.05	0.56
1:A:880:ARG:HD2	1:A:914:PHE:HB3	1.85	0.56
1:B:446:ILE:O	1:B:446:ILE:HG12	2.04	0.56
1:B:954:HIS:CD2	1:B:954:HIS:H	2.23	0.56
1:A:216:LEU:O	1:A:219:LYS:HB3	2.06	0.56
1:B:1203:LEU:CD2	1:B:1208:MET:HE3	2.35	0.56
1:B:132:GLU:HB3	1:B:164:LYS:CG	2.36	0.56
1:B:446:ILE:HG12	1:B:477:TRP:H	1.69	0.56
1:B:4:ASP:HB3	8:B:7379:HOH:O	2.04	0.56
1:B:880:ARG:HD2	1:B:914:PHE:HB3	1.87	0.56
1:A:1311:GLN:HG3	1:A:1317:VAL:CG1	2.36	0.55
1:B:882:LEU:O	1:B:954:HIS:HE1	1.89	0.55
1:B:321:GLN:HG2	1:B:413:GLU:CD	2.27	0.55
1:B:246:ASP:OD2	1:B:376:ARG:HD2	2.06	0.55
1:A:135:VAL:HG23	1:A:165:ASP:HB3	1.88	0.55
1:B:577:LEU:HD12	1:B:578:PRO:HD2	1.88	0.55
1:A:531:LEU:HD12	1:A:534:MET:SD	2.47	0.55
1:B:1250:LYS:CE	1:B:1251:ARG:HG3	2.35	0.55
1:B:666:ILE:CD1	1:B:807:VAL:HG13	2.37	0.55
1:A:59:ASP:HB3	1:A:62:GLN:HB2	1.87	0.55
1:B:1208:MET:CE	1:B:1234:SER:HB3	2.37	0.55
1:B:640:VAL:HG23	1:B:640:VAL:O	2.07	0.55
1:B:55:ILE:HG23	1:B:83:VAL:CG1	2.36	0.55

Continued on next page...

Continued from previous page...

Atom-1	Atom-2	Distance(Å)	Clash(Å)
1:B:900:ILE:HD12	1:B:900:ILE:N	2.21	0.55
1:A:58:TYR:OH	1:A:63:ASN:HA	2.07	0.54
1:B:135:VAL:HG23	1:B:165:ASP:HA	1.89	0.54
1:B:123:MET:HE3	1:B:138:ILE:HG23	1.88	0.54
1:B:132:GLU:O	1:B:164:LYS:HE3	2.08	0.54
1:B:998:LEU:HD13	1:B:1161:GLU:HB2	1.89	0.54
1:A:58:TYR:CE2	1:A:219:LYS:HG3	2.43	0.54
1:B:370:LYS:HD2	1:B:407:GLU:OE1	2.08	0.54
1:B:164:LYS:HB2	1:B:164:LYS:NZ	2.22	0.54
1:B:332:GLN:CA	1:B:332:GLN:HE21	2.18	0.54
1:B:887:ASN:O	1:B:1004:LYS:HE2	2.08	0.54
1:B:55:ILE:HG23	1:B:83:VAL:HG13	1.90	0.54
1:A:785:ASN:C	1:A:785:ASN:HD22	2.12	0.53
1:B:82:HIS:CE1	1:B:218:LEU:HD13	2.43	0.53
1:A:812:LEU:HD11	1:A:823:VAL:C	2.27	0.53
1:B:296:ILE:CD1	1:B:314:GLU:HG3	2.39	0.53
1:B:332:GLN:NE2	1:B:332:GLN:HA	2.21	0.53
1:A:666:ILE:HD12	1:A:807:VAL:HG13	1.89	0.53
1:A:469:THR:N	1:A:470:PRO:HD2	2.23	0.53
1:A:508:ARG:CZ	1:A:1315:LEU:HD11	2.39	0.53
1:A:972:ILE:HG13	1:A:973:ALA:N	2.24	0.53
1:A:911:PHE:O	1:A:912:ARG:C	2.46	0.53
1:B:1317:VAL:HG23	1:B:1318:THR:N	2.24	0.52
1:A:874:SER:HB3	1:A:900:ILE:HG21	1.90	0.52
1:A:785:ASN:HD22	1:A:786:ARG:N	2.07	0.52
1:B:923:ALA:HA	1:B:926:TRP:NE1	2.25	0.52
1:A:1082:SER:HB2	3:A:6002:PO4:O4	2.09	0.52
1:A:749:THR:O	1:A:812:LEU:HD22	2.08	0.52
1:B:388:PHE:HA	1:B:396:LEU:HG	1.92	0.52
1:B:911:PHE:O	1:B:912:ARG:C	2.47	0.52
1:B:812:LEU:HD11	1:B:823:VAL:C	2.29	0.52
1:B:1091:TYR:O	1:B:1095:GLN:HG2	2.09	0.52
1:B:1053:ALA:O	1:B:1098:LEU:HD11	2.10	0.52
1:A:900:ILE:HD12	1:A:900:ILE:N	2.25	0.52
1:B:478:ASN:C	1:B:478:ASN:HD22	2.12	0.52
1:A:124:TYR:OH	1:A:208:GLU:HG3	2.09	0.52
1:B:240:THR:OG1	1:B:243:GLU:HG3	2.10	0.51
1:A:555:ALA:O	1:A:1238:GLU:HA	2.10	0.51
1:A:667:ILE:HD13	1:A:687:ILE:HD13	1.92	0.51
1:A:111:GLN:NE2	1:A:150:THR:HA	2.25	0.51
1:A:581:ALA:O	1:A:585:GLN:HG3	2.09	0.51
1:B:157:GLN:HA	1:B:160:ARG:NH1	2.26	0.51

Continued on next page...

Continued from previous page...

Atom-1	Atom-2	Distance(Å)	Clash(Å)
1:B:62:GLN:OE1	1:B:64:LYS:HE3	2.10	0.51
1:B:123:MET:HE3	1:B:159:PHE:HB3	1.93	0.51
1:A:812:LEU:HD11	1:A:823:VAL:HG12	1.93	0.51
1:A:1221:THR:CG2	1:A:1227:TYR:HB2	2.41	0.51
1:A:1053:ALA:O	1:A:1098:LEU:HD11	2.11	0.51
1:B:666:ILE:HD11	1:B:807:VAL:HG13	1.91	0.51
1:B:601:ASN:N	1:B:601:ASN:HD22	2.07	0.51
1:A:267:MET:HE1	8:A:7168:HOH:O	2.10	0.51
1:A:487:ALA:CA	1:A:1318:THR:HG23	2.41	0.51
1:A:812:LEU:CD1	1:A:823:VAL:HG12	2.40	0.50
1:A:601:ASN:N	1:A:601:ASN:HD22	2.09	0.50
1:A:1054:LEU:O	1:A:1055:LYS:HB2	2.11	0.50
1:B:469:THR:N	1:B:470:PRO:HD2	2.26	0.50
1:B:764:VAL:O	1:B:791:VAL:HG22	2.10	0.50
1:A:695:ILE:HG23	1:A:700:ASP:HB3	1.92	0.50
1:B:132:GLU:HB3	1:B:164:LYS:HG3	1.92	0.50
1:B:123:MET:HE2	1:B:142:PHE:HZ	1.75	0.50
1:A:32:ARG:NH1	1:A:675:PRO:HD2	2.27	0.50
1:B:969:ASP:O	1:B:972:ILE:HG12	2.12	0.50
1:A:253:ASP:N	1:A:253:ASP:OD2	2.45	0.50
1:A:321:GLN:HG2	1:A:413:GLU:OE1	2.12	0.50
1:B:670:VAL:HG11	1:B:681:ALA:HB3	1.92	0.50
1:A:995:LYS:NZ	1:A:1284:GLN:NE2	2.60	0.50
1:A:426:ARG:HD3	1:A:1212:HIS:CG	2.46	0.50
1:A:3:ALA:CB	1:A:227:ARG:H	2.11	0.50
1:A:478:ASN:ND2	1:A:480:GLU:H	2.10	0.50
1:B:426:ARG:HG2	1:B:426:ARG:O	2.11	0.49
1:A:1287:ASP:O	1:A:1288:ASN:HB2	2.11	0.49
1:A:670:VAL:HG11	1:A:681:ALA:HB3	1.93	0.49
1:A:1134:LYS:HD3	1:B:1124:ALA:HB3	1.92	0.49
1:B:761:GLU:HG3	1:B:788:VAL:HG13	1.93	0.49
1:B:1086:ASN:O	1:B:1090:VAL:HG23	2.11	0.49
1:A:1037:GLU:HB2	1:A:1043:HIS:CD2	2.47	0.49
1:B:785:ASN:HD22	1:B:786:ARG:N	2.10	0.49
1:A:1004:LYS:HG3	1:A:1155:TYR:HE2	1.77	0.49
1:A:537:LYS:O	1:A:538:LEU:CB	2.60	0.49
1:A:387:THR:O	1:A:396:LEU:HD21	2.12	0.49
1:A:1311:GLN:HG3	1:A:1317:VAL:HG13	1.93	0.49
1:B:733:GLU:OE1	1:B:845:LYS:HE2	2.12	0.49
1:A:1003:THR:HG22	1:A:1266:LEU:HD21	1.94	0.49
1:B:909:THR:OG1	1:B:910:ALA:N	2.43	0.49
1:B:655:PHE:HE2	1:B:814:LEU:HD23	1.77	0.49

Continued on next page...

Continued from previous page...

Atom-1	Atom-2	Distance(Å)	Clash(Å)
1:B:749:THR:HG22	1:B:812:LEU:HD22	1.93	0.49
1:B:812:LEU:HD11	1:B:824:ARG:N	2.27	0.49
1:B:733:GLU:HG2	1:B:845:LYS:HG2	1.95	0.49
1:A:311:LEU:O	1:A:315:ILE:HG13	2.13	0.49
1:A:1107:LYS:O	1:A:1108:LYS:HD2	2.13	0.49
1:B:266:GLU:O	1:B:270:LYS:HB2	2.13	0.48
1:A:756:GLU:OE2	1:B:793:ARG:NH2	2.46	0.48
1:B:605:LEU:C	1:B:605:LEU:HD23	2.33	0.48
1:B:785:ASN:HD22	1:B:785:ASN:C	2.15	0.48
1:A:954:HIS:H	1:A:954:HIS:CD2	2.30	0.48
1:B:422:GLN:HG2	1:B:424:SER:H	1.78	0.48
1:B:402:ILE:HD12	1:B:402:ILE:C	2.34	0.48
1:A:558:GLN:HB3	1:A:1192:ILE:HD13	1.95	0.48
1:B:601:ASN:H	1:B:601:ASN:ND2	2.11	0.48
1:B:880:ARG:HD2	1:B:914:PHE:O	2.14	0.48
1:B:1107:LYS:C	1:B:1109:PRO:HD3	2.33	0.48
1:A:431:ALA:HB2	1:A:501:GLY:HA3	1.93	0.48
1:A:1107:LYS:C	1:A:1108:LYS:HD2	2.34	0.48
1:A:785:ASN:ND2	1:A:786:ARG:HG2	2.29	0.48
1:A:1132:PHE:CG	1:B:1126:SER:HB2	2.48	0.48
1:B:1313:THR:O	1:B:1317:VAL:HG22	2.14	0.48
1:A:62:GLN:O	1:A:64:LYS:HG3	2.13	0.48
1:A:711:GLU:HA	1:A:899:ARG:CD	2.44	0.48
1:B:1214:SER:HB3	1:B:1220:HIS:NE2	2.29	0.48
1:B:164:LYS:O	1:B:165:ASP:HB2	2.14	0.48
1:A:306:LEU:HD23	1:A:306:LEU:C	2.34	0.48
1:B:531:LEU:CB	1:B:540:PRO:HD2	2.43	0.47
1:A:667:ILE:CD1	1:A:687:ILE:HD13	2.43	0.47
1:B:245:LEU:HD22	1:B:375:SER:HA	1.95	0.47
1:B:1045:LYS:HE3	1:B:1190:ILE:HG21	1.97	0.47
1:B:646:THR:HG21	8:B:7201:HOH:O	2.14	0.47
1:A:552:ASP:HB2	1:A:1237:ILE:HD13	1.95	0.47
1:A:711:GLU:HA	1:A:899:ARG:HD3	1.97	0.47
1:B:528:ARG:HG2	1:B:528:ARG:HH11	1.80	0.47
1:B:874:SER:HB3	1:B:900:ILE:HG21	1.96	0.47
1:A:909:THR:OG1	1:A:910:ALA:N	2.42	0.47
1:B:153:ARG:C	1:B:153:ARG:HD2	2.35	0.47
1:B:1007:ILE:O	1:B:1008:SER:CB	2.63	0.47
1:A:557:VAL:HG12	1:A:1240:ARG:CG	2.41	0.47
1:A:236:ILE:HD12	1:A:247:LEU:HD11	1.97	0.46
1:B:657:LYS:O	1:B:658:ASP:HB2	2.14	0.46
1:B:1203:LEU:HD21	1:B:1208:MET:HE3	1.96	0.46

Continued on next page...

Continued from previous page...

Atom-1	Atom-2	Distance(Å)	Clash(Å)
1:A:372:THR:HG21	1:A:404:LEU:HD23	1.96	0.46
1:A:370:LYS:CE	1:A:383:ARG:HH21	2.29	0.46
1:A:217:ARG:C	1:A:219:LYS:H	2.18	0.46
1:B:441:PHE:CZ	1:B:526:LEU:HD11	2.50	0.46
1:A:163:ALA:C	1:A:165:ASP:H	2.19	0.46
1:A:923:ALA:HA	1:A:926:TRP:NE1	2.30	0.46
1:A:5:GLU:HG2	8:A:7612:HOH:O	2.16	0.46
1:B:641:PRO:HG2	1:B:780:LEU:HA	1.96	0.46
1:A:487:ALA:CB	1:A:1318:THR:HG23	2.45	0.46
1:A:400:GLU:H	1:A:400:GLU:CD	2.20	0.46
1:B:637:ALA:O	1:B:640:VAL:HG22	2.16	0.46
1:B:467:LYS:HB2	1:B:492:GLU:CD	2.36	0.46
1:A:1007:ILE:O	1:A:1008:SER:CB	2.64	0.46
1:A:964:LEU:HB3	1:A:965:PRO:HD3	1.97	0.46
1:B:1209:GLU:O	1:B:1298:PRO:HG3	2.16	0.45
1:A:812:LEU:HD21	1:A:823:VAL:O	2.16	0.45
1:B:545:ALA:HB2	1:B:993:TRP:HB2	1.97	0.45
1:B:231:GLU:OE2	1:B:680:ARG:NH1	2.49	0.45
1:B:646:THR:CG2	1:B:647:GLY:H	2.09	0.45
1:A:646:THR:HG21	8:A:7078:HOH:O	2.15	0.45
1:B:1318:THR:HG22	1:B:1320:VAL:H	1.80	0.45
1:A:1221:THR:HG22	1:A:1227:TYR:HB2	1.97	0.45
1:B:1281:ALA:O	1:B:1284:GLN:HB3	2.16	0.45
1:B:1250:LYS:HE3	1:B:1251:ARG:HG3	1.97	0.45
1:B:296:ILE:HD11	1:B:314:GLU:HG3	1.98	0.45
1:B:875:ARG:O	1:B:879:GLU:HG3	2.16	0.45
1:B:812:LEU:HD11	1:B:823:VAL:HG12	1.98	0.45
1:B:711:GLU:HA	1:B:899:ARG:HD2	1.97	0.45
1:B:1252:ALA:HB3	1:B:1256:SER:O	2.17	0.45
1:B:481:LEU:HD23	1:B:481:LEU:C	2.37	0.45
1:B:1203:LEU:HD23	1:B:1203:LEU:C	2.37	0.45
1:A:255:LYS:HG3	1:A:274:PHE:CD1	2.52	0.45
1:A:373:LEU:HD22	1:A:397:LEU:HD11	1.98	0.45
1:A:256:LEU:HD22	1:A:278:VAL:CG1	2.47	0.45
1:B:606:ARG:CD	1:B:679:GLN:HA	2.46	0.45
1:A:529:ALA:HB3	1:A:531:LEU:HD23	1.99	0.45
1:B:964:LEU:HB3	1:B:965:PRO:HD3	1.97	0.45
1:B:751:ALA:H	1:B:812:LEU:HD21	1.82	0.45
1:A:751:ALA:H	1:A:812:LEU:HD21	1.82	0.44
1:A:64:LYS:NZ	1:A:64:LYS:HB3	2.32	0.44
1:B:241:MET:HE1	1:B:283:ILE:HG21	1.99	0.44
1:B:263:ILE:HD11	6:B:3003:FAD:H3B	1.99	0.44

Continued on next page...

Continued from previous page...

Atom-1	Atom-2	Distance(Å)	Clash(Å)
1:A:130:GLN:O	1:A:133:PRO:HD3	2.17	0.44
1:B:650:ASN:ND2	1:B:778:LYS:HZ3	2.15	0.44
1:B:557:VAL:HG22	1:B:1240:ARG:HG2	1.99	0.44
1:A:504:VAL:HG23	1:A:505:GLU:N	2.33	0.44
1:B:711:GLU:HA	1:B:899:ARG:CD	2.47	0.44
1:B:986:LYS:O	1:B:990:GLU:HG3	2.17	0.44
1:B:130:GLN:NE2	1:B:132:GLU:H	1.99	0.44
1:B:400:GLU:HB2	8:B:7626:HOH:O	2.18	0.44
1:A:1088:GLN:NE2	8:A:7582:HOH:O	2.49	0.44
1:B:939:GLU:CG	1:B:977:TYR:CE2	2.97	0.44
1:A:1314:THR:O	1:A:1315:LEU:HB2	2.17	0.44
1:A:58:TYR:CZ	1:A:63:ASN:HA	2.52	0.44
1:A:1086:ASN:O	1:A:1090:VAL:HG23	2.18	0.44
1:A:952:LEU:HD23	1:A:958:LYS:HA	2.00	0.44
1:A:1088:GLN:HG2	1:A:1133:TYR:CE1	2.50	0.44
1:A:1034:GLY:HA3	8:A:7049:HOH:O	2.17	0.44
1:B:753:PRO:HD3	1:B:816:ALA:HB1	1.99	0.44
1:A:939:GLU:HG2	1:A:977:TYR:CZ	2.52	0.44
1:B:812:LEU:CD1	1:B:823:VAL:HG12	2.48	0.44
1:A:880:ARG:HD2	1:A:914:PHE:O	2.18	0.44
1:A:1180:MET:HE1	1:A:1263:PRO:HA	1.99	0.44
1:A:962:PHE:CE2	1:A:965:PRO:HD3	2.52	0.44
1:A:605:LEU:C	1:A:605:LEU:HD23	2.38	0.44
1:A:95:GLN:OE1	1:A:96:LYS:HB2	2.17	0.43
1:A:211:PHE:CD2	1:A:216:LEU:HD13	2.53	0.43
1:A:756:GLU:CD	1:B:793:ARG:HH22	2.21	0.43
1:B:793:ARG:HG2	8:B:7042:HOH:O	2.18	0.43
1:A:767:GLN:HG3	1:A:801:LYS:HB2	1.99	0.43
1:A:641:PRO:HG2	1:A:780:LEU:HA	1.99	0.43
1:B:128:ARG:HB3	1:B:128:ARG:NH1	2.33	0.43
1:A:324:GLU:HB2	1:A:411:SER:CB	2.48	0.43
1:A:503:MET:HG2	1:A:1302:GLU:OE2	2.18	0.43
1:A:751:ALA:N	1:A:812:LEU:HD21	2.33	0.43
1:A:315:ILE:HD13	1:A:327:ARG:HG2	1.99	0.43
1:B:1034:GLY:HA3	8:B:7040:HOH:O	2.19	0.43
1:A:601:ASN:ND2	1:A:601:ASN:H	2.16	0.43
1:A:601:ASN:O	1:A:821:ARG:HD2	2.19	0.43
1:B:1088:GLN:CG	1:B:1133:TYR:CD1	2.94	0.43
1:B:751:ALA:N	1:B:812:LEU:HD21	2.34	0.43
1:B:151:GLY:HA2	1:B:1200:VAL:HG21	1.99	0.43
1:B:153:ARG:N	1:B:154:PRO:HD2	2.34	0.43
1:B:504:VAL:HG23	1:B:505:GLU:N	2.34	0.43

Continued on next page...

Continued from previous page...

Atom-1	Atom-2	Distance(Å)	Clash(Å)
1:B:357:ILE:CD1	1:B:429:ASP:HA	2.49	0.43
1:A:388:PHE:HA	1:A:396:LEU:CG	2.44	0.43
1:A:217:ARG:C	1:A:219:LYS:N	2.72	0.43
1:B:29:TYR:CE1	1:B:33:LYS:HG2	2.54	0.43
1:A:753:PRO:HD3	1:A:816:ALA:HB1	1.99	0.43
1:B:1300:THR:O	1:B:1304:ILE:HG13	2.18	0.43
1:A:3:ALA:HA	1:A:226:LEU:HD22	2.00	0.43
1:A:263:ILE:HG22	1:A:267:MET:CE	2.48	0.43
1:A:616:LYS:HG2	1:A:692:LEU:HD11	2.02	0.42
1:A:251:HIS:C	1:A:253:ASP:H	2.23	0.42
1:A:1203:LEU:HD23	1:A:1203:LEU:C	2.40	0.42
1:B:785:ASN:ND2	1:B:786:ARG:HG2	2.34	0.42
1:B:252:PRO:CG	1:B:400:GLU:HG2	2.39	0.42
1:B:1151:HIS:NE2	1:B:1251:ARG:HB3	2.33	0.42
1:A:688:THR:HG23	8:A:7329:HOH:O	2.19	0.42
1:A:481:LEU:HD23	1:A:481:LEU:C	2.38	0.42
1:A:1088:GLN:HG2	1:A:1133:TYR:CG	2.51	0.42
1:B:82:HIS:NE2	1:B:218:LEU:HD13	2.33	0.42
1:B:256:LEU:HD22	1:B:278:VAL:HG13	2.00	0.42
1:A:644:ASN:O	1:A:653:THR:HA	2.20	0.42
1:A:666:ILE:HD11	1:A:807:VAL:CG1	2.49	0.42
1:A:926:TRP:O	1:A:930:VAL:HG23	2.19	0.42
1:B:1300:THR:HB	1:B:1301:PRO:HD2	2.02	0.42
1:B:164:LYS:HB2	1:B:164:LYS:HZ2	1.85	0.42
1:A:1143:GLU:OE1	1:A:1143:GLU:N	2.48	0.42
1:A:698:ILE:O	1:A:702:ILE:HG13	2.20	0.42
1:A:1250:LYS:CE	1:A:1251:ARG:HG3	2.49	0.42
1:A:749:THR:HG23	1:A:764:VAL:HG22	2.02	0.42
1:B:640:VAL:CG2	1:B:640:VAL:O	2.68	0.42
1:B:783:PRO:HB2	1:B:785:ASN:ND2	2.35	0.42
1:A:29:TYR:CZ	1:A:33:LYS:HG2	2.55	0.42
1:A:657:LYS:O	1:A:658:ASP:HB2	2.20	0.42
1:A:532:GLU:OE1	1:A:537:LYS:HA	2.20	0.41
1:A:128:ARG:NE	1:A:208:GLU:HG2	2.35	0.41
1:B:508:ARG:HG2	1:B:508:ARG:HH11	1.84	0.41
1:A:336:LEU:HG	6:A:2003:FAD:C4	2.49	0.41
1:B:94:THR:HG21	1:B:584:MET:HG2	2.02	0.41
1:A:251:HIS:C	1:A:253:ASP:N	2.72	0.41
1:B:785:ASN:ND2	1:B:786:ARG:NH1	2.49	0.41
1:A:711:GLU:CA	1:A:899:ARG:HD3	2.50	0.41
1:A:1180:MET:HE1	1:A:1266:LEU:HD12	2.01	0.41
1:B:1199:PHE:CE1	1:B:1267:ALA:HA	2.55	0.41

Continued on next page...

Continued from previous page...

Atom-1	Atom-2	Distance(Å)	Clash(Å)
1:B:531:LEU:C	1:B:531:LEU:HD23	2.41	0.41
1:B:123:MET:HE1	1:B:138:ILE:HG23	2.00	0.41
1:B:1004:LYS:HB3	1:B:1004:LYS:HE2	1.86	0.41
1:A:297:SER:HA	1:A:407:GLU:HA	2.03	0.41
1:A:153:ARG:N	1:A:154:PRO:HD2	2.35	0.41
1:A:1279:ARG:NH2	1:A:1290:LYS:HD3	2.33	0.41
1:A:1198:ALA:HB3	1:A:1263:PRO:HB2	2.02	0.41
1:B:262:GLU:O	1:B:266:GLU:HG3	2.20	0.41
1:B:1291:GLN:HG2	1:B:1292:LEU:N	2.36	0.41
1:A:655:PHE:HE2	1:A:814:LEU:HD23	1.85	0.41
1:A:891:ILE:HA	1:A:892:PRO:HD3	1.91	0.41
1:A:719:LEU:HD11	1:A:895:ARG:CB	2.46	0.41
1:A:708:TYR:CE1	1:A:902:LYS:HA	2.56	0.41
1:A:539:ASP:HB3	1:A:542:PHE:CD1	2.56	0.41
1:A:233:VAL:HG12	1:A:234:THR:N	2.35	0.41
1:B:130:GLN:O	1:B:133:PRO:HD3	2.21	0.41
1:B:1102:GLU:HB3	1:B:1103:PRO:CD	2.48	0.41
1:B:1200:VAL:O	1:B:1203:LEU:HB3	2.21	0.41
1:A:46:GLY:CA	5:A:2002:FES:S1	3.09	0.41
1:B:116:THR:HB	1:B:117:PRO:HD3	2.03	0.41
1:A:1105:LYS:HB2	1:A:1105:LYS:HE3	1.91	0.41
1:B:1105:LYS:HA	1:B:1116:TRP:NE1	2.36	0.41
1:A:1214:SER:HB3	1:A:1220:HIS:NE2	2.36	0.41
1:B:311:LEU:O	1:B:315:ILE:HG13	2.21	0.41
1:A:116:THR:HB	1:A:117:PRO:HD3	2.03	0.41
1:B:418:SER:HB2	1:B:518:PHE:CD1	2.56	0.41
1:A:610:SER:HB2	1:A:660:VAL:HG11	2.02	0.41
1:A:3:ALA:HA	1:A:226:LEU:CD2	2.51	0.41
1:A:764:VAL:O	1:A:791:VAL:HG22	2.21	0.41
1:B:531:LEU:HB2	1:B:540:PRO:HD2	2.03	0.41
1:B:504:VAL:HG22	8:B:7235:HOH:O	2.21	0.41
1:B:868:GLY:HA3	1:B:907:SER:HA	2.04	0.41
1:A:1069:ASN:HD22	1:A:1069:ASN:C	2.24	0.41
1:A:1252:ALA:HB3	1:A:1256:SER:O	2.20	0.41
1:A:132:GLU:O	1:A:164:LYS:HE3	2.21	0.40
1:B:531:LEU:HG	1:B:540:PRO:HB2	2.03	0.40
1:B:294:GLU:HG3	1:B:370:LYS:NZ	2.36	0.40
1:A:1151:HIS:NE2	1:A:1251:ARG:HB3	2.36	0.40
1:A:221:THR:HA	1:A:222:PRO:HD3	1.93	0.40
1:A:783:PRO:HB3	1:B:1028:SER:HB3	2.03	0.40
1:A:1311:GLN:CG	1:A:1317:VAL:HG13	2.52	0.40
1:B:132:GLU:HB3	1:B:164:LYS:HD3	2.02	0.40

Continued on next page...

Continued from previous page...

Atom-1	Atom-2	Distance(Å)	Clash(Å)
1:A:1091:TYR:O	1:A:1095:GLN:HG2	2.22	0.40
1:A:473:LEU:O	1:A:474:SER:CB	2.69	0.40
1:A:134:THR:OG1	1:A:137:GLU:HG3	2.22	0.40
1:A:132:GLU:HB3	1:A:164:LYS:HD3	2.04	0.40
1:B:478:ASN:C	1:B:478:ASN:ND2	2.75	0.40
1:A:539:ASP:HA	1:A:540:PRO:HD3	1.97	0.40
1:B:46:GLY:HA2	5:B:2002:FES:S1	2.62	0.40
1:A:334:ARG:HB3	1:A:334:ARG:NH1	2.36	0.40

There are no symmetry-related clashes.

5.3 Torsion angles

5.3.1 Protein backbone ⓘ

In the following table, the Percentiles column shows the percent Ramachandran outliers of the chain as a percentile score with respect to all X-ray entries followed by that with respect to entries of similar resolution. The Analysed column shows the number of residues for which the backbone conformation was analysed, and the total number of residues.

Mol	Chain	Analysed	Favoured	Allowed	Outliers	Percentiles	
1	A	1287/1331 (97%)	1220 (95%)	57 (4%)	10 (1%)	27	29
1	B	1273/1331 (96%)	1220 (96%)	46 (4%)	7 (0%)	38	43
All	All	2560/2662 (96%)	2440 (95%)	103 (4%)	17 (1%)	30	33

All (17) Ramachandran outliers are listed below:

Mol	Chain	Res	Type
1	A	4	ASP
1	A	1008	SER
1	A	1287	ASP
1	A	1288	ASN
1	B	4	ASP
1	B	1008	SER
1	A	62	GLN
1	A	912	ARG
1	B	912	ARG
1	B	1286	GLY
1	A	797	GLY
1	B	376	ARG

Continued on next page...

Continued from previous page...

Mol	Chain	Res	Type
1	B	797	GLY
1	A	538	LEU
1	A	474	SER
1	B	1139	GLY
1	A	1012	PRO

5.3.2 Protein sidechains ⓘ

In the following table, the Percentiles column shows the percent sidechain outliers of the chain as a percentile score with respect to all X-ray entries followed by that with respect to entries of similar resolution. The Analysed column shows the number of residues for which the sidechain conformation was analysed, and the total number of residues.

Mol	Chain	Analysed	Rotameric	Outliers	Percentiles	
1	A	1089/1123 (97%)	1064 (98%)	25 (2%)	63	78
1	B	1079/1123 (96%)	1058 (98%)	21 (2%)	69	84
All	All	2168/2246 (96%)	2122 (98%)	46 (2%)	66	81

All (46) residues with a non-rotameric sidechain are listed below:

Mol	Chain	Res	Type
1	A	95	GLN
1	A	208	GLU
1	A	247	LEU
1	A	253	ASP
1	A	255	LYS
1	A	256	LEU
1	A	400	GLU
1	A	432	LYS
1	A	480	GLU
1	A	551	LYS
1	A	572	MET
1	A	601	ASN
1	A	650	ASN
1	A	743	TYR
1	A	785	ASN
1	A	911	PHE
1	A	939	GLU
1	A	1002	PRO
1	A	1031	LEU
1	A	1069	ASN

Continued on next page...

Continued from previous page...

Mol	Chain	Res	Type
1	A	1085	LEU
1	A	1177	ASP
1	A	1239	PHE
1	A	1250	LYS
1	A	1276	ASP
1	B	199	ASP
1	B	253	ASP
1	B	255	LYS
1	B	306	LEU
1	B	332	GLN
1	B	350	ASN
1	B	383	ARG
1	B	478	ASN
1	B	480	GLU
1	B	572	MET
1	B	601	ASN
1	B	743	TYR
1	B	785	ASN
1	B	869	ASN
1	B	911	PHE
1	B	1069	ASN
1	B	1072	PRO
1	B	1085	LEU
1	B	1239	PHE
1	B	1250	LYS
1	B	1276	ASP

Some sidechains can be flipped to improve hydrogen bonding and reduce clashes. All (41) such sidechains are listed below:

Mol	Chain	Res	Type
1	A	63	ASN
1	A	71	ASN
1	A	111	GLN
1	A	130	GLN
1	A	145	ASN
1	A	350	ASN
1	A	472	GLN
1	A	478	ASN
1	A	583	ASN
1	A	585	GLN
1	A	601	ASN
1	A	642	ASN

Continued on next page...

Continued from previous page...

Mol	Chain	Res	Type
1	A	650	ASN
1	A	679	GLN
1	A	747	ASN
1	A	785	ASN
1	A	954	HIS
1	A	1069	ASN
1	A	1088	GLN
1	A	1284	GLN
1	B	63	ASN
1	B	71	ASN
1	B	130	GLN
1	B	145	ASN
1	B	223	GLN
1	B	332	GLN
1	B	350	ASN
1	B	386	HIS
1	B	478	ASN
1	B	583	ASN
1	B	585	GLN
1	B	601	ASN
1	B	642	ASN
1	B	650	ASN
1	B	747	ASN
1	B	785	ASN
1	B	869	ASN
1	B	954	HIS
1	B	1069	ASN
1	B	1086	ASN
1	B	1284	GLN

5.3.3 RNA ⓘ

There are no RNA chains in this entry.

5.4 Non-standard residues in protein, DNA, RNA chains ⓘ

There are no non-standard protein/DNA/RNA residues in this entry.

5.5 Carbohydrates ⓘ

There are no carbohydrates in this entry.

5.6 Ligand geometry

Of 25 ligands modelled in this entry, 4 are monoatomic - leaving 21 for Mogul analysis.

In the following table, the Counts columns list the number of bonds (or angles) for which Mogul statistics could be retrieved, the number of bonds (or angles) that are observed in the model and the number of bonds (or angles) that are defined in the chemical component dictionary. The Link column lists molecule types, if any, to which the group is linked. The Z score for a bond length (or angle) is the number of standard deviations the observed value is removed from the expected value. A bond length (or angle) with $|Z| > 2$ is considered an outlier worth inspection. RMSZ is the root-mean-square of all Z scores of the bond lengths (or angles).

Mol	Type	Chain	Res	Link	Bond lengths			Bond angles		
					Counts	RMSZ	# $ Z > 2$	Counts	RMSZ	# $ Z > 2$
5	FES	A	2001	1	0,4,4	0.00	-	0,4,4	0.00	-
5	FES	A	2002	1	0,4,4	0.00	-	0,4,4	0.00	-
6	FAD	A	2003	-	58,58,58	3.55	19 (32%)	85,89,89	2.67	26 (30%)
7	URC	A	4001	-	10,13,13	2.79	5 (50%)	10,19,19	6.68	5 (50%)
2	BCT	A	5001	-	0,3,3	0.00	-	0,3,3	0.00	-
3	PO4	A	6001	-	4,4,4	0.87	0	6,6,6	0.31	0
3	PO4	A	6002	-	4,4,4	0.92	0	6,6,6	0.31	0
3	PO4	A	6004	-	4,4,4	0.84	0	6,6,6	0.31	0
3	PO4	A	6006	-	4,4,4	0.87	0	6,6,6	0.31	0
3	PO4	A	6008	-	4,4,4	0.85	0	6,6,6	0.31	0
3	PO4	A	6009	-	4,4,4	0.83	0	6,6,6	0.31	0
5	FES	B	2001	1	0,4,4	0.00	-	0,4,4	0.00	-
5	FES	B	2002	1	0,4,4	0.00	-	0,4,4	0.00	-
6	FAD	B	3003	-	58,58,58	4.12	27 (46%)	85,89,89	2.62	25 (29%)
7	URC	B	4002	-	10,13,13	2.91	5 (50%)	10,19,19	6.45	5 (50%)
2	BCT	B	5002	-	0,3,3	0.00	-	0,3,3	0.00	-
3	PO4	B	6003	-	4,4,4	0.95	0	6,6,6	0.31	0
3	PO4	B	6005	-	4,4,4	0.87	0	6,6,6	0.31	0
3	PO4	B	6007	-	4,4,4	0.88	0	6,6,6	0.31	0
3	PO4	B	6010	-	4,4,4	0.87	0	6,6,6	0.31	0
3	PO4	B	6011	-	4,4,4	0.87	0	6,6,6	0.31	0

In the following table, the Chirals column lists the number of chiral outliers, the number of chiral centers analysed, the number of these observed in the model and the number defined in the chemical component dictionary. Similar counts are reported in the Torsion and Rings columns. '-' means no outliers of that kind were identified.

Mol	Type	Chain	Res	Link	Chirals	Torsions	Rings
5	FES	A	2001	1	-	0/0/4/4	0/0/1/1
5	FES	A	2002	1	-	0/0/4/4	0/0/1/1
6	FAD	A	2003	-	-	0/34/50/50	0/1/6/6

Continued on next page...

Continued from previous page...

Mol	Type	Chain	Res	Link	Chirals	Torsions	Rings
7	URC	A	4001	-	-	0/0/24/24	0/0/2/2
2	BCT	A	5001	-	-	0/0/0/0	0/0/0/0
3	PO4	A	6001	-	-	0/0/0/0	0/0/0/0
3	PO4	A	6002	-	-	0/0/0/0	0/0/0/0
3	PO4	A	6004	-	-	0/0/0/0	0/0/0/0
3	PO4	A	6006	-	-	0/0/0/0	0/0/0/0
3	PO4	A	6008	-	-	0/0/0/0	0/0/0/0
3	PO4	A	6009	-	-	0/0/0/0	0/0/0/0
5	FES	B	2001	1	-	0/0/4/4	0/0/1/1
5	FES	B	2002	1	-	0/0/4/4	0/0/1/1
6	FAD	B	3003	-	-	0/34/50/50	0/1/6/6
7	URC	B	4002	-	-	0/0/24/24	0/0/2/2
2	BCT	B	5002	-	-	0/0/0/0	0/0/0/0
3	PO4	B	6003	-	-	0/0/0/0	0/0/0/0
3	PO4	B	6005	-	-	0/0/0/0	0/0/0/0
3	PO4	B	6007	-	-	0/0/0/0	0/0/0/0
3	PO4	B	6010	-	-	0/0/0/0	0/0/0/0
3	PO4	B	6011	-	-	0/0/0/0	0/0/0/0

All (56) bond length outliers are listed below:

Mol	Chain	Res	Type	Atoms	Z	Observed(Å)	Ideal(Å)
6	B	3003	FAD	C5'-C4'	-19.40	1.20	1.51
6	A	2003	FAD	C5'-C4'	-14.06	1.29	1.51
6	A	2003	FAD	C2B-C1B	-12.06	1.36	1.53
6	B	3003	FAD	C2B-C1B	-9.46	1.40	1.53
6	B	3003	FAD	C2B-C3B	9.39	1.79	1.53
6	A	2003	FAD	O2B-C2B	-8.99	1.21	1.43
6	B	3003	FAD	P-O3P	-8.61	1.44	1.59
6	A	2003	FAD	P-O3P	-7.76	1.45	1.59
6	B	3003	FAD	O4B-C1B	7.59	1.53	1.41
6	B	3003	FAD	O2B-C2B	-7.41	1.25	1.43
7	B	4002	URC	C5-C6	6.76	1.51	1.43
7	A	4001	URC	C5-C6	6.54	1.51	1.43
6	A	2003	FAD	O4B-C1B	6.00	1.50	1.41
6	B	3003	FAD	C5B-C4B	-5.41	1.34	1.51
6	A	2003	FAD	C9A-N10	5.38	1.46	1.38
6	B	3003	FAD	C9A-N10	5.36	1.46	1.38
6	A	2003	FAD	C5X-N5	4.66	1.42	1.35
6	A	2003	FAD	C10-N1	4.62	1.43	1.35
6	B	3003	FAD	C5X-N5	4.33	1.42	1.35
6	B	3003	FAD	C10-N1	4.25	1.43	1.35

Continued on next page...

Continued from previous page...

Mol	Chain	Res	Type	Atoms	Z	Observed(Å)	Ideal(Å)
7	A	4001	URC	C4-N9	-3.92	1.30	1.33
6	A	2003	FAD	C4-N3	3.82	1.43	1.37
7	B	4002	URC	C4-N9	-3.77	1.30	1.33
6	A	2003	FAD	O5'-C5'	-3.72	1.29	1.44
6	A	2003	FAD	C4A-N9A	-3.24	1.33	1.37
6	B	3003	FAD	C4-N3	3.19	1.42	1.37
6	B	3003	FAD	C4A-N9A	-3.14	1.33	1.37
6	A	2003	FAD	C4X-N5	2.93	1.42	1.36
6	A	2003	FAD	C2-N3	2.90	1.43	1.37
6	B	3003	FAD	P-O5'	-2.81	1.46	1.59
7	B	4002	URC	C8-N7	-2.80	1.32	1.37
7	B	4002	URC	C8-N9	-2.79	1.32	1.37
7	B	4002	URC	C6-N1	-2.79	1.36	1.39
6	B	3003	FAD	C1'-C2'	2.78	1.54	1.51
7	A	4001	URC	C8-N9	-2.75	1.32	1.37
6	B	3003	FAD	C3B-C4B	2.72	1.60	1.53
6	B	3003	FAD	C4X-N5	2.70	1.41	1.36
6	A	2003	FAD	PA-O3P	2.64	1.64	1.59
6	A	2003	FAD	C1B-N9A	2.61	1.56	1.48
7	A	4001	URC	C8-N7	-2.60	1.32	1.37
6	B	3003	FAD	P-O1P	2.56	1.61	1.51
6	B	3003	FAD	C2-N3	2.44	1.42	1.37
6	B	3003	FAD	C6-C7	2.43	1.44	1.37
6	B	3003	FAD	PA-O2A	-2.40	1.44	1.55
6	A	2003	FAD	PA-O2A	-2.38	1.44	1.55
6	B	3003	FAD	O3B-C3B	-2.36	1.37	1.43
6	B	3003	FAD	C4A-N3A	2.35	1.39	1.35
6	B	3003	FAD	O5'-C5'	-2.29	1.35	1.44
6	A	2003	FAD	C6-C7	2.27	1.44	1.37
6	B	3003	FAD	O5B-C5B	2.23	1.54	1.44
7	A	4001	URC	C6-N1	-2.13	1.37	1.39
6	B	3003	FAD	PA-O5B	-2.13	1.49	1.59
6	A	2003	FAD	O3B-C3B	-2.09	1.37	1.43
6	A	2003	FAD	C10-N10	2.07	1.43	1.38
6	B	3003	FAD	C10-N10	2.07	1.43	1.38
6	B	3003	FAD	C9-C9A	2.04	1.44	1.40

All (61) bond angle outliers are listed below:

Mol	Chain	Res	Type	Atoms	Z	Observed(°)	Ideal(°)
7	A	4001	URC	O13-C6-C5	-19.70	119.61	127.62
7	B	4002	URC	O13-C6-C5	-19.00	119.89	127.62

Continued on next page...

Continued from previous page...

Mol	Chain	Res	Type	Atoms	Z	Observed(°)	Ideal(°)
6	B	3003	FAD	N3A-C2A-N1A	-12.84	117.97	128.71
6	A	2003	FAD	N3A-C2A-N1A	-12.55	118.22	128.71
6	A	2003	FAD	C2'-C1'-N10	10.53	126.42	112.45
6	B	3003	FAD	C2'-C1'-N10	10.35	126.18	112.45
6	B	3003	FAD	C2-N1-C10	6.61	121.64	114.98
6	A	2003	FAD	C2-N1-C10	6.60	121.63	114.98
6	B	3003	FAD	O4B-C1B-C2B	5.05	114.52	106.77
7	A	4001	URC	O13-C6-N1	4.94	124.19	117.93
6	B	3003	FAD	C4X-N5-C5X	4.66	121.92	116.69
7	B	4002	URC	O13-C6-N1	4.62	123.79	117.93
6	A	2003	FAD	C4X-N5-C5X	4.47	121.71	116.69
6	B	3003	FAD	N3A-C4A-N9A	4.35	133.29	125.43
6	A	2003	FAD	O4B-C1B-N9A	-4.32	104.42	108.44
6	A	2003	FAD	N3A-C4A-N9A	4.32	133.23	125.43
6	A	2003	FAD	O3B-C3B-C2B	4.15	125.35	111.83
6	A	2003	FAD	O2B-C2B-C1B	4.15	123.79	111.23
6	A	2003	FAD	O4B-C1B-C2B	3.92	112.78	106.77
6	A	2003	FAD	C3B-C2B-C1B	-3.80	94.96	100.91
7	A	4001	URC	C6-N1-C2	-3.75	122.94	126.17
7	B	4002	URC	C6-N1-C2	-3.59	123.07	126.17
6	B	3003	FAD	P-O5'-C5'	3.56	147.66	122.03
6	B	3003	FAD	C4X-C10-N1	-3.50	119.23	122.73
6	B	3003	FAD	O2P-P-O3P	3.40	121.27	105.14
6	B	3003	FAD	C5B-C4B-C3B	3.32	128.52	115.21
7	B	4002	URC	C5-C6-N1	3.30	116.31	114.61
6	A	2003	FAD	C4X-C10-N1	-3.29	119.44	122.73
7	A	4001	URC	C5-C6-N1	3.09	116.20	114.61
6	A	2003	FAD	C2A-N3A-C4A	3.07	122.75	114.01
6	A	2003	FAD	C2B-C3B-C4B	3.04	108.72	102.65
6	B	3003	FAD	C2A-N3A-C4A	2.98	122.49	114.01
6	B	3003	FAD	P-O3P-PA	2.83	139.97	131.68
6	A	2003	FAD	C1'-C2'-C3'	2.81	117.85	109.82
6	B	3003	FAD	C1'-C2'-C3'	2.78	117.77	109.82
6	A	2003	FAD	C5A-C4A-N3A	-2.75	119.72	125.70
6	A	2003	FAD	O4B-C4B-C3B	-2.67	99.76	105.17
6	B	3003	FAD	C5A-C4A-N3A	-2.67	119.89	125.70
7	B	4002	URC	N1-C2-N3	2.63	120.29	115.85
7	A	4001	URC	N1-C2-N3	2.61	120.27	115.85
6	A	2003	FAD	C4X-C10-N10	-2.60	119.21	120.51
6	B	3003	FAD	C3B-C2B-C1B	-2.60	96.84	100.91
6	A	2003	FAD	C4A-C5A-N7A	-2.60	107.30	109.52
6	A	2003	FAD	C4-N3-C2	-2.58	120.09	125.39

Continued on next page...

Continued from previous page...

Mol	Chain	Res	Type	Atoms	Z	Observed(°)	Ideal(°)
6	B	3003	FAD	C4-N3-C2	-2.57	120.12	125.39
6	B	3003	FAD	C4X-C10-N10	-2.51	119.25	120.51
6	B	3003	FAD	O2B-C2B-C1B	2.49	118.76	111.23
6	B	3003	FAD	C4A-C5A-N7A	-2.48	107.40	109.52
6	B	3003	FAD	C2A-N1A-C6A	2.43	123.17	118.77
6	B	3003	FAD	C4'-C3'-C2'	2.43	118.74	113.25
6	A	2003	FAD	C2A-N1A-C6A	2.26	122.85	118.77
6	A	2003	FAD	C5B-C4B-C3B	2.25	124.24	115.21
6	A	2003	FAD	O2B-C2B-C3B	-2.21	104.63	111.83
6	A	2003	FAD	C4'-C3'-C2'	2.21	118.25	113.25
6	B	3003	FAD	C6-C5X-C9A	2.17	122.02	119.02
6	B	3003	FAD	N1-C10-N10	2.11	121.52	115.97
6	B	3003	FAD	C5'-C4'-C3'	2.09	116.01	112.06
6	B	3003	FAD	C8M-C8-C9	-2.08	115.35	120.38
6	A	2003	FAD	C6-C5X-C9A	2.05	121.86	119.02
6	A	2003	FAD	N1-C10-N10	2.04	121.34	115.97
6	A	2003	FAD	P-O3P-PA	2.01	137.59	131.68

There are no chirality outliers.

There are no torsion outliers.

There are no ring outliers.

5.7 Other polymers ⓘ

There are no such residues in this entry.

5.8 Polymer linkage issues

There are no chain breaks in this entry.

6 Fit of model and data ⓘ

6.1 Protein, DNA and RNA chains ⓘ

In the following table, the column labelled ‘#RSRZ> 2’ contains the number (and percentage) of RSRZ outliers, followed by percent RSRZ outliers for the chain as percentile scores relative to all X-ray entries and entries of similar resolution. The OWAB column contains the minimum, median, 95th percentile and maximum values of the occupancy-weighted average B-factor per residue. The column labelled ‘Q< 0.9’ lists the number of (and percentage) of residues with an average occupancy less than 0.9.

Mol	Chain	Analysed	<RSRZ>	#RSRZ>2		OWAB(Å ²)	Q<0.9
1	A	1291/1331 (96%)	-0.21	37 (2%)	49 58	14, 29, 57, 96	0
1	B	1281/1331 (96%)	-0.24	40 (3%)	47 56	13, 26, 53, 116	0
All	All	2572/2662 (96%)	-0.23	77 (2%)	48 57	13, 28, 55, 116	0

All (77) RSRZ outliers are listed below:

Mol	Chain	Res	Type	RSRZ
1	B	553	PRO	11.8
1	A	1289	ALA	11.5
1	A	1288	ASN	10.5
1	B	554	PRO	8.6
1	A	61	LEU	8.4
1	B	1288	ASN	7.9
1	B	552	ASP	7.5
1	B	540	PRO	7.2
1	B	543	ALA	7.0
1	A	191	SER	6.8
1	B	529	ALA	6.7
1	B	61	LEU	6.7
1	B	191	SER	6.2
1	A	551	LYS	5.8
1	B	1289	ALA	5.8
1	B	541	THR	5.7
1	B	1287	ASP	5.0
1	A	550	GLN	5.0
1	A	549	PHE	4.9
1	B	547	LEU	4.8
1	A	1290	LYS	4.4
1	B	1320	VAL	4.2
1	A	95	GLN	4.2
1	B	546	THR	4.1

Continued on next page...

Continued from previous page...

Mol	Chain	Res	Type	RSRZ
1	A	165	ASP	4.1
1	B	544	SER	4.1
1	B	527	GLY	4.0
1	B	1286	GLY	4.0
1	A	221	THR	4.0
1	A	192	PRO	4.0
1	B	531	LEU	4.0
1	A	1111	GLY	3.9
1	B	555	ALA	3.8
1	A	1287	ASP	3.7
1	B	63	ASN	3.5
1	B	530	ASP	3.5
1	B	165	ASP	3.4
1	A	1316	CYS	3.4
1	A	250	GLN	3.4
1	A	552	ASP	3.3
1	B	528	ARG	3.2
1	B	220	ASP	3.2
1	B	542	PHE	3.1
1	A	424	SER	3.1
1	B	1318	THR	3.1
1	A	1110	THR	3.1
1	A	423	ALA	2.9
1	A	1315	LEU	2.9
1	B	565	LYS	2.9
1	B	1111	GLY	2.7
1	B	164	LYS	2.7
1	A	386	HIS	2.6
1	A	271	ASN	2.6
1	A	553	PRO	2.6
1	B	1143	GLU	2.4
1	A	1318	THR	2.4
1	A	3	ALA	2.3
1	A	193	SER	2.3
1	A	467	LYS	2.3
1	B	334	ARG	2.2
1	A	537	LYS	2.2
1	A	474	SER	2.2
1	B	222	PRO	2.2
1	B	400	GLU	2.1
1	A	320	GLU	2.1
1	B	1108	LYS	2.1

Continued on next page...

Continued from previous page...

Mol	Chain	Res	Type	RSRZ
1	B	474	SER	2.1
1	A	496	ALA	2.1
1	A	220	ASP	2.1
1	A	1143	GLU	2.1
1	B	1290	LYS	2.1
1	A	292	GLY	2.0
1	A	565	LYS	2.0
1	A	483	GLN	2.0
1	B	317	LYS	2.0
1	B	386	HIS	2.0
1	B	313	GLU	2.0

6.2 Non-standard residues in protein, DNA, RNA chains ⓘ

There are no non-standard protein/DNA/RNA residues in this entry.

6.3 Carbohydrates ⓘ

There are no carbohydrates in this entry.

6.4 Ligands ⓘ

In the following table, the Atoms column lists the number of modelled atoms in the group and the number defined in the chemical component dictionary. LLDF column lists the quality of electron density of the group with respect to its neighbouring residues in protein, DNA or RNA chains. The B-factors column lists the minimum, median, 95th percentile and maximum values of B factors of atoms in the group. The column labelled 'Q< 0.9' lists the number of atoms with occupancy less than 0.9.

Mol	Type	Chain	Res	Atoms	RSR	LLDF	B-factors(Å ²)	Q<0.9
3	PO4	A	6001	5/5	0.20	6.50	46,48,51,51	0
3	PO4	A	6009	5/5	0.26	5.66	85,86,86,87	0
7	URC	B	4002	12/12	0.11	1.95	32,34,39,39	0
3	PO4	B	6005	5/5	0.18	1.41	82,83,84,84	0
3	PO4	A	6006	5/5	0.22	1.39	80,80,81,81	0
3	PO4	B	6011	5/5	0.17	1.23	49,50,51,53	0
3	PO4	B	6007	5/5	0.14	1.04	72,72,73,73	0
3	PO4	A	6004	5/5	0.21	0.76	97,97,98,99	0
3	PO4	B	6010	5/5	0.16	0.74	69,70,71,71	0
3	PO4	B	6003	5/5	0.10	0.41	32,33,39,40	0

Continued on next page...

Continued from previous page...

Mol	Type	Chain	Res	Atoms	RSR	LLDF	B-factors(\AA^2)	Q<0.9
3	PO4	A	6008	5/5	0.12	0.02	73,74,74,75	0
7	URC	A	4001	12/12	0.09	-0.05	31,34,35,38	0
2	BCT	B	5002	4/4	0.10	-0.18	22,22,23,24	0
3	PO4	A	6002	5/5	0.09	-0.25	34,37,39,42	0
6	FAD	A	2003	53/53	0.09	-0.63	20,28,31,37	0
6	FAD	B	3003	53/53	0.09	-0.80	14,22,26,28	0
5	FES	A	2001	4/4	0.08	-1.29	31,32,32,34	0
5	FES	B	2002	4/4	0.06	-1.60	19,20,20,21	0
4	CA	B	7004	1/1	0.03	-1.82	22,22,22,22	0
2	BCT	A	5001	4/4	0.07	-1.94	23,25,25,26	0
5	FES	B	2001	4/4	0.06	-1.99	26,30,30,33	0
4	CA	A	7003	1/1	0.03	-2.33	22,22,22,22	0
4	CA	B	7001	1/1	0.06	-2.39	21,21,21,21	0
5	FES	A	2002	4/4	0.05	-3.06	20,20,21,21	0
4	CA	A	7002	1/1	0.05	-3.58	23,23,23,23	0

6.5 Other polymers ⓘ

There are no such residues in this entry.