



Full wwPDB X-ray Structure Validation Report

Feb 28, 2014 – 06:07 AM GMT

PDB ID : 3E3B
Title : Crystal structure of catalytic subunit of human protein kinase CK2alpha prime
with a potent indazole-derivative inhibitor
Authors : Kinoshita, T.; Nakaniwa, T.; Tada, T.
Deposited on : 2008-08-07
Resolution : 3.20 Å(reported)

This is a full wwPDB validation report for a publicly released PDB entry.
We welcome your comments at validation@mail.wwpdb.org
A user guide is available at <http://wwpdb.org/ValidationPDFNotes.html>

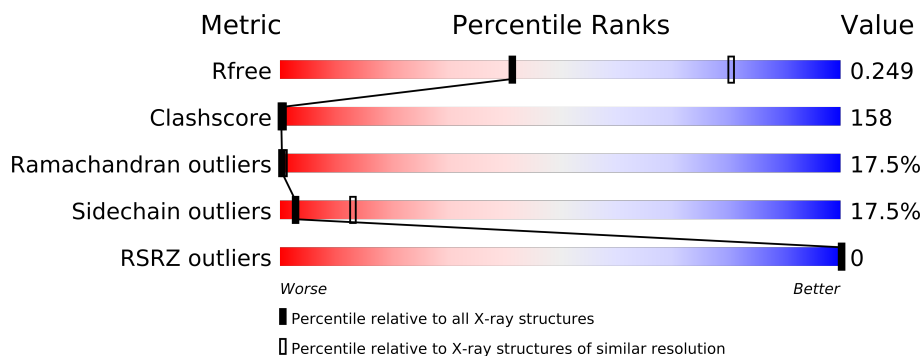
The following versions of software and data (see [references](#)) were used in the production of this report:

MolProbity : 4.02b-467
Mogul : 1.15 2013
Xtriage (Phenix) : dev-1323
EDS : stable22639
Percentile statistics : 21963
Refmac : 5.8.0049
CCP4 : 6.3.0 (Settle)
Ideal geometry (proteins) : Engh & Huber (2001)
Ideal geometry (DNA, RNA) : Parkinson et. al. (1996)
Validation Pipeline (wwPDB-VP) : stable22683

1 Overall quality at a glance

The reported resolution of this entry is 3.20 Å.

Percentile scores (ranging between 0-100) for global validation metrics of the entry are shown in the following graphic. The table shows the number of entries on which the scores are based.



Metric	Whole archive (#Entries)	Similar resolution (#Entries, resolution range(Å))
R_{free}	66092	1824 (3.30-3.10)
Clashscore	79885	1078 (3.26-3.14)
Ramachandran outliers	78287	1059 (3.26-3.14)
Sidechain outliers	78261	1058 (3.26-3.14)
RSRZ outliers	66119	1825 (3.30-3.10)

The table below summarises the geometric issues observed across the polymeric chains and their fit to the electron density. The red, orange, yellow and green segments on the lower bar indicate the fraction of residues that contain outliers for ≥ 3 , 2, 1 and 0 types of geometric quality criteria. The upper red bar (where present) indicates the fraction of residues that have poor fit to the electron density.

Mol	Chain	Length	Quality of chain
1	X	339	

2 Entry composition i

There are 3 unique types of molecules in this entry. The entry contains 2938 atoms, of which 0 are hydrogen and 0 are deuterium.

In the tables below, the ZeroOcc column contains the number of atoms modelled with zero occupancy, the AltConf column contains the number of residues with at least one atom in alternate conformation and the Trace column contains the number of residues modelled with at most 2 atoms.

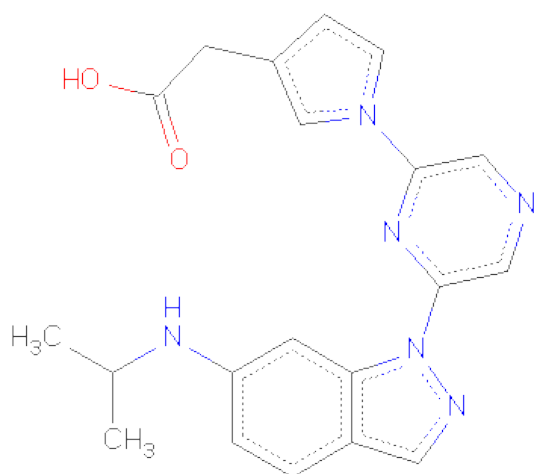
- Molecule 1 is a protein called Casein kinase II subunit alpha'.

Mol	Chain	Residues	Atoms					ZeroOcc	AltConf	Trace
			Total	C	N	O	S			
1	X	334	2804	1803	490	500	11	0	0	0

There are 5 discrepancies between the modelled and reference sequences:

Chain	Residue	Modelled	Actual	Comment	Reference
X	-4	GLY	-	EXPRESSION TAG	UNP P19784
X	-3	PRO	-	EXPRESSION TAG	UNP P19784
X	-2	LEU	-	EXPRESSION TAG	UNP P19784
X	-1	GLY	-	EXPRESSION TAG	UNP P19784
X	0	SER	-	EXPRESSION TAG	UNP P19784

- Molecule 2 is [1-(6-{6-[(1-METHYLETHYL)AMINO]-1H-INDAZOL-1-YL}PYRAZIN-2-YL)-1H-PYRROL-3-YL]ACETICACID (three-letter code: CCK) (formula: C₂₀H₂₀N₆O₂).



Mol	Chain	Residues	Atoms				ZeroOcc	AltConf
2	X	1	Total	C	N	O	0	0
			28	20	6	2		

- Molecule 3 is water.

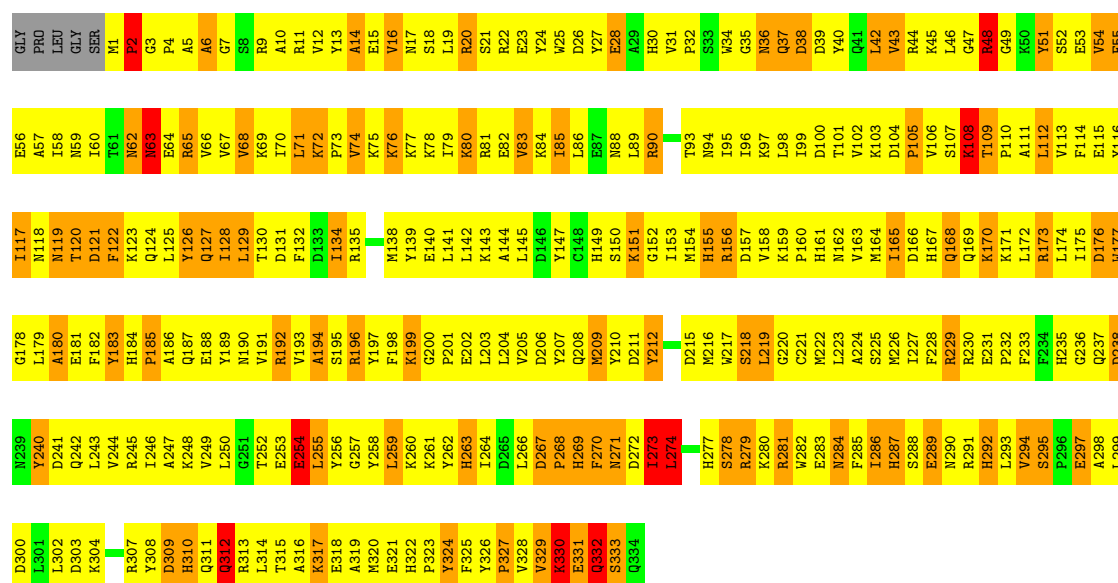
Mol	Chain	Residues	Atoms		ZeroOcc	AltConf
3	X	106	Total	O	0	0
			106	106		

3 Residue-property plots

These plots are drawn for all protein, RNA and DNA chains in the entry. The first graphic for a chain summarises the proportions of errors displayed in the second graphic. The second graphic shows the sequence view annotated by issues in geometry and electron density. Residues are color-coded according to the number of geometric quality criteria for which they contain at least one outlier: green = 0, yellow = 1, orange = 2 and red = 3 or more. A red dot above a residue indicates a poor fit to the electron density ($RSRZ > 2$). Stretches of 2 or more consecutive residues without any outlier are shown as a green connector. Residues present in the sample, but not in the model, are shown in grey.

- Molecule 1: Casein kinase II subunit alpha'

Chain X: 



4 Data and refinement statistics

Property	Value	Source
Space group	P 21 21 2	Depositor
Cell constants a, b, c, α , β , γ	69.81Å 102.13Å 46.62Å 90.00° 90.00° 90.00°	Depositor
Resolution (Å)	57.64 – 3.20 42.41 – 3.18	Depositor EDS
% Data completeness (in resolution range)	(Not available) (57.64-3.20) 99.1 (42.41-3.18)	Depositor EDS
R_{merge}	(Not available)	Depositor
R_{sym}	(Not available)	Depositor
$\langle I/\sigma(I) \rangle$ ¹	8.20 (at 3.19Å)	Xtriage
Refinement program	CNX	Depositor
R, R_{free}	0.248 , 0.274 0.236 , 0.249	Depositor DCC
R_{free} test set	273 reflections (4.81%)	DCC
Wilson B-factor (Å ²)	29.6	Xtriage
Anisotropy	0.231	Xtriage
Bulk solvent k_{sol} (e/Å ³), B_{sol} (Å ²)	0.26 , 39.7	EDS
Estimated twinning fraction	No twinning to report.	Xtriage
L-test for twinning	$\langle L \rangle = 0.48$, $\langle L^2 \rangle = 0.32$	Xtriage
Outliers	0 of 5953 reflections	Xtriage
F_o, F_c correlation	0.89	EDS
Total number of atoms	2938	wwPDB-VP
Average B, all atoms (Å ²)	8.0	wwPDB-VP

Xtriage's analysis on translational NCS is as follows: *The largest off-origin peak in the Patterson function is 5.03% of the height of the origin peak. No significant pseudotranslation is detected.*

¹Intensities estimated from amplitudes.

5 Model quality ⓘ

5.1 Standard geometry ⓘ

Bond lengths and bond angles in the following residue types are not validated in this section: CCK

The Z score for a bond length (or angle) is the number of standard deviations the observed value is removed from the expected value. A bond length (or angle) with $|Z| > 5$ is considered an outlier worth inspection. RMSZ is the root-mean-square of all Z scores of the bond lengths (or angles).

Mol	Chain	Bond lengths		Bond angles	
		RMSZ	$\# Z > 5$	RMSZ	$\# Z > 5$
1	X	0.42	0/2877	0.72	0/3885

Chiral center outliers are detected by calculating the chiral volume of a chiral center and verifying if the center is modelled as a planar moiety or with the opposite hand. A planarity outlier is detected by checking planarity of atoms in a peptide group, atoms in a mainchain group or atoms of a sidechain that are expected to be planar.

Mol	Chain	#Chirality outliers	#Planarity outliers
1	X	0	1

There are no bond length outliers.

There are no bond angle outliers.

There are no chirality outliers.

All (1) planarity outliers are listed below:

Mol	Chain	Res	Type	Group
1	X	183	TYR	Sidechain

5.2 Close contacts ⓘ

In the following table, the Non-H and H(model) columns list the number of non-hydrogen atoms and hydrogen atoms in the chain respectively. The H(added) column lists the number of hydrogens added by MolProbity. The Clashes column lists the number of clashes within the asymmetric unit, and the number in parentheses is this value normalized per 1000 atoms of the molecule in the chain. The Symm-Clashes column gives symmetry related clashes, in the same way as for the Clashes column.

Mol	Chain	Non-H	H(model)	H(added)	Clashes	Symm-Clashes
1	X	2804	0	2780	887	0

Continued on next page...

Continued from previous page...

Mol	Chain	Non-H	H(model)	H(added)	Clashes	Symm-Clashes
2	X	28	0	19	6	0
3	X	106	0	0	42	0
All	All	2938	0	2799	889	0

Clashscore is defined as the number of clashes calculated for the entry per 1000 atoms (including hydrogens) of the entry. The overall clashscore for this entry is 158.

All (889) close contacts within the same asymmetric unit are listed below.

Atom-1	Atom-2	Distance(Å)	Clash(Å)
1:X:223:LEU:HD12	1:X:302:LEU:HD13	1.17	1.17
1:X:294:VAL:HG13	1:X:299:LEU:HD21	1.24	1.15
1:X:199:LYS:HZ1	1:X:242:GLN:HG3	1.04	1.13
1:X:65:ARG:HB3	1:X:65:ARG:HH21	1.00	1.10
1:X:256:TYR:HA	1:X:259:LEU:HD11	1.28	1.09
1:X:107:SER:C	1:X:108:LYS:HE2	1.72	1.08
1:X:256:TYR:HA	1:X:259:LEU:CD1	1.85	1.07
1:X:288:SER:O	1:X:291:ARG:HG2	1.54	1.07
1:X:46:LEU:HD21	1:X:56:GLU:HB2	1.35	1.07
1:X:72:LYS:H	1:X:72:LYS:HD2	1.13	1.07
1:X:75:LYS:HE3	1:X:77:LYS:HE2	1.30	1.07
1:X:48:ARG:HB2	1:X:53:GLU:HA	1.13	1.06
1:X:13:TYR:HB2	1:X:212:TYR:HE2	1.18	1.06
1:X:107:SER:HB2	1:X:109:THR:OG1	1.56	1.06
1:X:309:ASP:HB3	1:X:312:GLN:HG2	1.34	1.05
1:X:48:ARG:CB	1:X:53:GLU:HA	1.86	1.05
1:X:65:ARG:HB3	1:X:65:ARG:NH2	1.69	1.05
1:X:294:VAL:HG12	1:X:295:SER:H	0.90	1.05
1:X:72:LYS:N	1:X:72:LYS:HD2	1.71	1.04
1:X:249:VAL:HG12	1:X:250:LEU:HD23	1.38	1.04
1:X:307:ARG:NH2	1:X:312:GLN:HE22	1.57	1.03
1:X:121:ASP:OD2	1:X:123:LYS:HB2	1.58	1.02
1:X:286:ILE:HD11	1:X:291:ARG:HA	1.38	1.02
1:X:309:ASP:HB3	1:X:312:GLN:CG	1.89	1.02
1:X:294:VAL:HG12	1:X:295:SER:N	1.70	1.02
1:X:37:GLN:HE21	1:X:38:ASP:HA	1.25	1.01
1:X:307:ARG:HH21	1:X:312:GLN:NE2	1.57	1.00
1:X:35:GLY:H	1:X:102:VAL:HA	1.24	1.00
1:X:294:VAL:CG1	1:X:295:SER:H	1.73	1.00
1:X:48:ARG:HG2	1:X:52:SER:O	1.63	0.98
1:X:13:TYR:HB2	1:X:212:TYR:CE2	1.99	0.98
1:X:119:ASN:HD22	1:X:120:THR:N	1.62	0.97
1:X:273:ILE:HD12	1:X:273:ILE:H	1.29	0.97

Continued on next page...

Continued from previous page...

Atom-1	Atom-2	Distance(Å)	Clash(Å)
1:X:105:PRO:O	1:X:108:LYS:HD3	1.64	0.97
1:X:294:VAL:CG1	1:X:299:LEU:HD21	1.95	0.97
1:X:204:LEU:HD12	1:X:243:LEU:HD13	1.46	0.96
1:X:131:ASP:O	1:X:135:ARG:HG3	1.65	0.96
1:X:76:LYS:O	1:X:80:LYS:HG2	1.65	0.96
1:X:199:LYS:NZ	1:X:242:GLN:HG3	1.82	0.95
1:X:315:THR:CG2	1:X:318:GLU:H	1.80	0.94
1:X:72:LYS:H	1:X:72:LYS:CD	1.80	0.94
1:X:304:LYS:HE2	1:X:314:LEU:HD21	1.45	0.94
1:X:205:VAL:HG11	1:X:264:ILE:HG21	1.46	0.94
1:X:119:ASN:HB2	1:X:164:MET:SD	2.07	0.94
1:X:199:LYS:HD3	1:X:204:LEU:CD2	1.99	0.93
1:X:128:ILE:HD13	1:X:129:LEU:N	1.84	0.93
1:X:42:LEU:HD11	1:X:68:VAL:CG1	1.99	0.93
1:X:279:ARG:HD3	1:X:279:ARG:C	1.87	0.92
1:X:10:ALA:HB2	1:X:183:TYR:CE2	2.05	0.92
1:X:37:GLN:HE21	1:X:38:ASP:CA	1.81	0.92
1:X:115:GLU:CD	1:X:173:ARG:HH22	1.73	0.92
1:X:297:GLU:CB	1:X:324:TYR:HD1	1.82	0.92
1:X:199:LYS:HZ1	1:X:242:GLN:CG	1.82	0.91
1:X:189:TYR:N	1:X:208:GLN:HB3	1.84	0.91
1:X:62:ASN:HD22	1:X:64:GLU:HG3	1.36	0.91
1:X:315:THR:HG22	1:X:318:GLU:HB2	1.51	0.91
1:X:199:LYS:HD3	1:X:204:LEU:HD21	1.53	0.91
1:X:286:ILE:CD1	1:X:291:ARG:HA	2.01	0.91
1:X:304:LYS:HA	1:X:307:ARG:HE	1.36	0.91
1:X:269:HIS:ND1	1:X:273:ILE:HD11	1.87	0.90
1:X:295:SER:O	1:X:299:LEU:HD23	1.70	0.90
1:X:74:VAL:HG13	1:X:75:LYS:N	1.87	0.90
1:X:329:VAL:C	1:X:330:LYS:HD2	1.92	0.90
1:X:134:ILE:CG2	1:X:135:ARG:N	2.35	0.90
1:X:205:VAL:HG11	1:X:264:ILE:CG2	2.01	0.90
1:X:273:ILE:HD12	1:X:273:ILE:N	1.87	0.90
1:X:119:ASN:HD22	1:X:120:THR:H	1.11	0.89
1:X:199:LYS:HZ2	1:X:204:LEU:HD11	1.37	0.89
1:X:125:LEU:O	1:X:128:ILE:HD12	1.72	0.89
1:X:297:GLU:HB3	1:X:324:TYR:HD1	1.35	0.88
1:X:20:ARG:HH12	1:X:151:LYS:HZ1	1.17	0.88
1:X:48:ARG:HB2	1:X:53:GLU:CA	2.00	0.88
1:X:223:LEU:CD1	1:X:302:LEU:HD13	2.01	0.88
1:X:315:THR:HG22	1:X:318:GLU:CB	2.02	0.88
1:X:125:LEU:CD1	1:X:126:TYR:HD1	1.87	0.88

Continued on next page...

Continued from previous page...

Atom-1	Atom-2	Distance(Å)	Clash(Å)
1:X:269:HIS:C	1:X:273:ILE:HD13	1.93	0.88
1:X:31:VAL:HG13	1:X:31:VAL:O	1.74	0.88
1:X:190:ASN:HD21	1:X:192:ARG:HB2	1.39	0.87
1:X:244:VAL:HG11	1:X:273:ILE:HG22	1.57	0.87
1:X:107:SER:O	1:X:108:LYS:HB2	1.73	0.87
1:X:252:THR:CG2	1:X:277:HIS:H	1.87	0.87
1:X:51:TYR:HD2	1:X:51:TYR:H	1.20	0.86
1:X:278:SER:O	1:X:280:LYS:HD2	1.76	0.86
1:X:65:ARG:HH21	1:X:65:ARG:CB	1.86	0.85
1:X:12:VAL:HG23	1:X:13:TYR:N	1.91	0.85
1:X:125:LEU:HD13	1:X:125:LEU:C	1.97	0.85
1:X:189:TYR:H	1:X:208:GLN:HB3	1.38	0.85
1:X:191:VAL:HG13	1:X:203:LEU:CD2	2.07	0.84
1:X:119:ASN:ND2	1:X:120:THR:N	2.24	0.84
1:X:248:LYS:HG2	1:X:277:HIS:ND1	1.92	0.84
1:X:271:ASN:ND2	1:X:271:ASN:H	1.72	0.84
1:X:294:VAL:HG13	1:X:299:LEU:CD2	2.04	0.84
1:X:125:LEU:HD12	1:X:126:TYR:CD1	2.13	0.84
1:X:309:ASP:CB	1:X:312:GLN:HG2	2.07	0.84
1:X:204:LEU:HD12	1:X:243:LEU:CD1	2.08	0.83
1:X:217:TRP:HB2	1:X:313:ARG:NH2	1.92	0.83
1:X:191:VAL:HA	1:X:203:LEU:HD22	1.58	0.83
1:X:227:ILE:HD11	1:X:293:LEU:O	1.79	0.83
1:X:16:VAL:HG12	1:X:17:ASN:N	1.93	0.83
1:X:271:ASN:N	1:X:271:ASN:ND2	2.23	0.83
1:X:134:ILE:HG22	1:X:135:ARG:H	1.42	0.83
1:X:71:LEU:HD22	1:X:72:LYS:N	1.94	0.82
1:X:104:ASP:C	1:X:106:VAL:H	1.80	0.82
1:X:14:ALA:O	1:X:185:PRO:HG3	1.77	0.82
1:X:273:ILE:H	1:X:273:ILE:CD1	1.91	0.82
1:X:322:HIS:CE1	1:X:324:TYR:H	1.98	0.82
1:X:10:ALA:O	1:X:14:ALA:HB2	1.79	0.82
1:X:74:VAL:HG13	1:X:75:LYS:H	1.41	0.82
1:X:104:ASP:CB	1:X:106:VAL:HG22	2.10	0.81
1:X:37:GLN:HB2	1:X:104:ASP:CG	1.99	0.81
1:X:315:THR:HG23	1:X:318:GLU:H	1.43	0.81
1:X:292:HIS:CD2	1:X:292:HIS:H	1.98	0.81
1:X:42:LEU:HD11	1:X:68:VAL:HG12	1.62	0.81
1:X:106:VAL:HG23	1:X:107:SER:H	1.46	0.81
1:X:71:LEU:O	1:X:71:LEU:HD13	1.79	0.81
1:X:293:LEU:HG	3:X:375:HOH:O	1.79	0.81
1:X:12:VAL:HG23	1:X:13:TYR:H	1.47	0.80

Continued on next page...

Continued from previous page...

Atom-1	Atom-2	Distance(Å)	Clash(Å)
1:X:164:MET:O	1:X:165:ILE:HG13	1.81	0.80
1:X:294:VAL:O	1:X:295:SER:HB3	1.80	0.80
1:X:51:TYR:O	1:X:71:LEU:HD23	1.81	0.80
1:X:328:VAL:O	1:X:330:LYS:HE3	1.82	0.80
1:X:193:VAL:HA	3:X:363:HOH:O	1.80	0.80
1:X:51:TYR:CD2	1:X:51:TYR:N	2.49	0.80
1:X:138:MET:SD	1:X:226:MET:HE3	2.21	0.80
1:X:122:PHE:HE1	1:X:161:HIS:CD2	1.99	0.80
1:X:261:LYS:C	1:X:262:TYR:HD2	1.84	0.80
1:X:271:ASN:N	1:X:271:ASN:HD22	1.77	0.80
1:X:79:ILE:O	1:X:83:VAL:HG23	1.81	0.80
1:X:5:ALA:HB1	3:X:390:HOH:O	1.82	0.79
1:X:156:ARG:NH2	1:X:156:ARG:HG3	1.97	0.79
1:X:37:GLN:O	1:X:39:ASP:N	2.15	0.79
1:X:156:ARG:HG3	1:X:156:ARG:HH21	1.47	0.79
1:X:199:LYS:O	1:X:199:LYS:HD2	1.81	0.79
1:X:199:LYS:CD	1:X:204:LEU:HD21	2.12	0.79
1:X:104:ASP:O	1:X:106:VAL:HG22	1.82	0.79
1:X:269:HIS:O	1:X:271:ASN:N	2.16	0.79
1:X:20:ARG:HH22	1:X:151:LYS:HZ3	1.31	0.79
1:X:67:VAL:CG1	1:X:114:PHE:HB2	2.13	0.79
1:X:199:LYS:CE	1:X:204:LEU:HD21	2.13	0.78
1:X:297:GLU:HB3	1:X:324:TYR:CD1	2.18	0.78
1:X:34:TRP:HB2	3:X:381:HOH:O	1.84	0.78
1:X:172:LEU:O	1:X:173:ARG:HD3	1.83	0.78
1:X:204:LEU:CD1	1:X:243:LEU:HD13	2.13	0.78
1:X:105:PRO:O	1:X:108:LYS:CD	2.30	0.78
1:X:42:LEU:HD11	1:X:68:VAL:HG11	1.66	0.78
1:X:126:TYR:C	1:X:127:GLN:HG3	2.05	0.78
1:X:158:VAL:HB	1:X:218:SER:HB3	1.66	0.77
1:X:34:TRP:CZ3	1:X:110:PRO:HB2	2.20	0.77
1:X:74:VAL:CG1	1:X:75:LYS:H	1.97	0.77
1:X:75:LYS:HG3	1:X:78:LYS:HB3	1.65	0.77
1:X:20:ARG:HH22	1:X:151:LYS:NZ	1.82	0.77
1:X:298:ALA:O	1:X:302:LEU:HB2	1.85	0.77
1:X:256:TYR:O	1:X:259:LEU:HD12	1.85	0.77
1:X:20:ARG:NH1	1:X:151:LYS:HZ1	1.82	0.77
1:X:70:ILE:HD11	3:X:382:HOH:O	1.84	0.77
1:X:125:LEU:HD13	1:X:126:TYR:N	1.99	0.77
1:X:37:GLN:NE2	1:X:38:ASP:N	2.33	0.76
1:X:199:LYS:NZ	1:X:242:GLN:CG	2.46	0.76
1:X:34:TRP:CZ3	1:X:101:THR:HG23	2.19	0.76

Continued on next page...

Continued from previous page...

Atom-1	Atom-2	Distance(Å)	Clash(Å)
1:X:117:ILE:C	1:X:117:ILE:HD13	2.05	0.76
1:X:315:THR:HG22	1:X:318:GLU:CG	2.14	0.76
1:X:258:TYR:CE1	1:X:309:ASP:HA	2.19	0.76
1:X:34:TRP:CZ3	1:X:110:PRO:CB	2.69	0.76
1:X:216:MET:HE1	1:X:316:ALA:HA	1.67	0.76
1:X:81:ARG:HG3	1:X:82:GLU:N	2.01	0.76
1:X:22:ARG:HG3	1:X:25:TRP:CZ2	2.21	0.76
1:X:156:ARG:CG	1:X:156:ARG:HH21	1.98	0.76
1:X:104:ASP:O	1:X:106:VAL:N	2.18	0.75
1:X:106:VAL:HG23	1:X:107:SER:N	2.01	0.75
1:X:37:GLN:O	1:X:40:TYR:N	2.17	0.75
1:X:330:LYS:HB2	3:X:415:HOH:O	1.85	0.75
1:X:107:SER:O	1:X:108:LYS:HE2	1.84	0.75
1:X:37:GLN:NE2	1:X:38:ASP:CA	2.49	0.75
1:X:6:ALA:HB2	3:X:442:HOH:O	1.87	0.75
1:X:252:THR:HG21	1:X:277:HIS:H	1.50	0.75
1:X:199:LYS:NZ	1:X:204:LEU:HD11	2.01	0.75
1:X:75:LYS:CE	1:X:77:LYS:HE2	2.15	0.75
1:X:104:ASP:HB3	1:X:106:VAL:HG22	1.68	0.75
1:X:122:PHE:HE2	1:X:231:GLU:OE2	1.70	0.74
1:X:75:LYS:O	1:X:77:LYS:N	2.20	0.74
1:X:155:HIS:O	1:X:156:ARG:HB2	1.87	0.74
1:X:71:LEU:C	1:X:71:LEU:HD22	2.06	0.74
1:X:156:ARG:NE	1:X:210:TYR:OH	2.20	0.74
1:X:46:LEU:CD2	1:X:56:GLU:HB2	2.15	0.74
1:X:219:LEU:O	1:X:219:LEU:HD13	1.87	0.74
1:X:112:LEU:HB2	1:X:114:PHE:CZ	2.23	0.74
1:X:187:GLN:O	1:X:189:TYR:CD2	2.40	0.74
1:X:270:PHE:HB3	1:X:274:LEU:HD22	1.69	0.74
1:X:244:VAL:HG11	1:X:273:ILE:CG2	2.16	0.74
1:X:104:ASP:C	1:X:106:VAL:N	2.41	0.73
1:X:103:LYS:HD3	1:X:108:LYS:O	1.88	0.73
1:X:45:LYS:HA	1:X:55:PHE:HA	1.70	0.73
1:X:48:ARG:CG	1:X:53:GLU:HA	2.18	0.73
1:X:75:LYS:HB2	1:X:77:LYS:NZ	2.02	0.73
1:X:82:GLU:HG3	1:X:178:GLY:HA2	1.71	0.73
1:X:168:GLN:NE2	1:X:168:GLN:HA	2.03	0.73
1:X:67:VAL:HG11	2:X:351:CCK:H29	1.70	0.73
1:X:196:ARG:O	1:X:197:TYR:CD1	2.41	0.73
1:X:36:ASN:HB2	3:X:383:HOH:O	1.88	0.73
1:X:309:ASP:HB3	1:X:312:GLN:HG3	1.71	0.72
1:X:191:VAL:CA	1:X:203:LEU:HD22	2.19	0.72

Continued on next page...

Continued from previous page...

Atom-1	Atom-2	Distance(Å)	Clash(Å)
1:X:122:PHE:CE2	1:X:231:GLU:OE2	2.42	0.72
1:X:20:ARG:HG3	3:X:407:HOH:O	1.88	0.72
1:X:207:TYR:CD1	1:X:264:ILE:HD11	2.25	0.72
1:X:157:ASP:OD2	1:X:159:LYS:HE2	1.90	0.71
1:X:74:VAL:CG1	1:X:75:LYS:N	2.52	0.71
1:X:119:ASN:CB	1:X:164:MET:SD	2.79	0.71
1:X:202:GLU:OE1	1:X:310:HIS:HB2	1.90	0.71
1:X:176:ASP:OD1	1:X:177:TRP:N	2.23	0.71
1:X:198:PHE:O	1:X:199:LYS:C	2.29	0.71
1:X:37:GLN:NE2	1:X:38:ASP:CG	2.44	0.71
1:X:191:VAL:HG13	1:X:203:LEU:HD22	1.73	0.71
1:X:97:LYS:CB	1:X:115:GLU:OE2	2.39	0.71
1:X:292:HIS:HD2	1:X:292:HIS:H	1.38	0.71
1:X:122:PHE:H	1:X:122:PHE:HD1	1.37	0.71
1:X:269:HIS:O	1:X:273:ILE:HD13	1.89	0.71
1:X:135:ARG:HH11	1:X:324:TYR:HA	1.55	0.71
1:X:58:ILE:HD11	1:X:63:ASN:C	2.11	0.71
1:X:125:LEU:HD22	1:X:128:ILE:CD1	2.21	0.70
1:X:134:ILE:HG23	1:X:135:ARG:N	2.05	0.70
1:X:37:GLN:NE2	1:X:38:ASP:H	1.90	0.70
1:X:122:PHE:CE1	1:X:161:HIS:CD2	2.80	0.70
1:X:228:PHE:O	1:X:229:ARG:CG	2.39	0.70
1:X:328:VAL:C	1:X:330:LYS:H	1.93	0.70
1:X:326:TYR:O	1:X:328:VAL:N	2.24	0.70
1:X:328:VAL:O	1:X:330:LYS:CE	2.39	0.70
1:X:125:LEU:CD1	1:X:126:TYR:CD1	2.70	0.70
1:X:279:ARG:CD	1:X:279:ARG:C	2.61	0.70
1:X:97:LYS:HB3	1:X:115:GLU:OE2	1.91	0.70
1:X:10:ALA:HB3	1:X:14:ALA:HA	1.72	0.70
1:X:71:LEU:HD22	1:X:72:LYS:HD2	1.74	0.69
1:X:86:LEU:HD21	1:X:177:TRP:CD1	2.27	0.69
1:X:222:MET:HB3	1:X:226:MET:HE2	1.74	0.69
1:X:122:PHE:CG	1:X:160:PRO:HB3	2.26	0.69
1:X:58:ILE:HD11	1:X:63:ASN:CA	2.22	0.69
1:X:189:TYR:O	1:X:208:GLN:HG2	1.91	0.69
1:X:217:TRP:HB2	1:X:313:ARG:HH22	1.56	0.69
1:X:125:LEU:HD22	1:X:128:ILE:HD11	1.73	0.69
1:X:216:MET:CE	1:X:316:ALA:HA	2.21	0.69
1:X:11:ARG:NH1	1:X:318:GLU:OE1	2.26	0.69
1:X:18:SER:O	1:X:20:ARG:N	2.22	0.69
1:X:192:ARG:NH1	1:X:206:ASP:OD2	2.26	0.68
1:X:42:LEU:HD12	1:X:55:PHE:HB2	1.76	0.68

Continued on next page...

Continued from previous page...

Atom-1	Atom-2	Distance(Å)	Clash(Å)
1:X:55:PHE:N	1:X:55:PHE:CD1	2.62	0.68
1:X:329:VAL:HG22	1:X:329:VAL:O	1.93	0.68
1:X:154:MET:CE	1:X:211:ASP:C	2.62	0.68
1:X:230:ARG:HE	1:X:233:PHE:HD2	1.40	0.68
1:X:4:PRO:O	1:X:263:HIS:CG	2.47	0.68
1:X:279:ARG:O	1:X:279:ARG:HD3	1.93	0.68
1:X:190:ASN:HD21	1:X:192:ARG:CB	2.06	0.68
1:X:117:ILE:HD13	1:X:118:ASN:N	2.09	0.68
1:X:270:PHE:HB3	1:X:274:LEU:CD2	2.24	0.68
1:X:191:VAL:HG13	1:X:203:LEU:HA	1.76	0.68
1:X:193:VAL:O	1:X:194:ALA:HB3	1.92	0.68
1:X:138:MET:SD	1:X:226:MET:CE	2.81	0.68
1:X:288:SER:HA	1:X:291:ARG:HD2	1.76	0.67
1:X:155:HIS:O	1:X:180:ALA:HA	1.94	0.67
1:X:328:VAL:O	1:X:330:LYS:NZ	2.27	0.67
1:X:158:VAL:HB	1:X:218:SER:CB	2.25	0.67
1:X:248:LYS:O	1:X:280:LYS:HD3	1.95	0.67
1:X:141:LEU:HD23	1:X:219:LEU:CD2	2.23	0.67
1:X:138:MET:HE3	1:X:219:LEU:HD11	1.76	0.67
1:X:20:ARG:NH2	1:X:151:LYS:NZ	2.42	0.67
1:X:1:MET:O	1:X:2:PRO:C	2.33	0.67
1:X:187:GLN:N	1:X:209:MET:HE2	2.08	0.67
1:X:12:VAL:HG11	1:X:315:THR:OG1	1.95	0.66
1:X:34:TRP:CE3	1:X:101:THR:HG23	2.30	0.66
1:X:121:ASP:OD1	1:X:123:LYS:HG2	1.95	0.66
1:X:196:ARG:HD2	1:X:237:GLN:O	1.96	0.66
1:X:228:PHE:O	1:X:229:ARG:HG2	1.95	0.66
1:X:48:ARG:HD3	1:X:49:GLY:O	1.95	0.66
1:X:30:HIS:HD2	3:X:425:HOH:O	1.79	0.66
1:X:203:LEU:HD21	1:X:210:TYR:CE2	2.30	0.66
1:X:248:LYS:HG2	1:X:277:HIS:CE1	2.29	0.66
1:X:228:PHE:O	1:X:229:ARG:CB	2.43	0.66
1:X:258:TYR:HE1	1:X:309:ASP:HA	1.60	0.66
1:X:191:VAL:HA	1:X:203:LEU:CD2	2.24	0.66
1:X:199:LYS:HD2	1:X:199:LYS:C	2.15	0.66
1:X:37:GLN:CG	1:X:38:ASP:N	2.58	0.66
1:X:20:ARG:NH2	1:X:151:LYS:HZ3	1.94	0.66
1:X:75:LYS:HB2	1:X:77:LYS:CE	2.25	0.66
1:X:287:HIS:CD2	1:X:290:ASN:HD21	2.13	0.66
1:X:67:VAL:HG12	1:X:114:PHE:O	1.95	0.66
1:X:156:ARG:HD2	1:X:193:VAL:HG21	1.77	0.66
1:X:45:LYS:HE2	1:X:55:PHE:CZ	2.31	0.66

Continued on next page...

Continued from previous page...

Atom-1	Atom-2	Distance(Å)	Clash(Å)
1:X:267:ASP:CG	1:X:268:PRO:HD2	2.16	0.65
1:X:253:GLU:O	1:X:255:LEU:N	2.29	0.65
1:X:9:ARG:NH2	1:X:185:PRO:HB3	2.11	0.65
1:X:135:ARG:NE	1:X:324:TYR:O	2.29	0.65
1:X:71:LEU:CD2	1:X:72:LYS:CD	2.75	0.65
1:X:315:THR:HG23	1:X:318:GLU:N	2.12	0.65
1:X:209:MET:HA	3:X:361:HOH:O	1.97	0.65
1:X:297:GLU:HB2	1:X:324:TYR:HD1	1.59	0.65
1:X:119:ASN:ND2	1:X:120:THR:H	1.87	0.65
1:X:67:VAL:HG13	1:X:114:PHE:HB2	1.76	0.65
1:X:103:LYS:HG3	1:X:109:THR:C	2.17	0.64
1:X:164:MET:O	1:X:165:ILE:CG1	2.45	0.64
1:X:298:ALA:HB2	1:X:324:TYR:CE1	2.32	0.64
1:X:256:TYR:CA	1:X:259:LEU:CD1	2.71	0.64
1:X:149:HIS:HD2	1:X:316:ALA:HB2	1.62	0.64
1:X:75:LYS:C	3:X:450:HOH:O	2.36	0.64
1:X:104:ASP:HB3	1:X:106:VAL:CG2	2.27	0.64
1:X:13:TYR:CZ	1:X:150:SER:HA	2.32	0.64
1:X:315:THR:HA	3:X:400:HOH:O	1.96	0.64
1:X:37:GLN:CB	1:X:104:ASP:CG	2.65	0.64
1:X:307:ARG:NH2	1:X:312:GLN:NE2	2.30	0.64
1:X:37:GLN:NE2	1:X:38:ASP:HA	2.06	0.64
1:X:75:LYS:HB2	1:X:77:LYS:HE2	1.79	0.64
1:X:163:VAL:O	1:X:163:VAL:HG12	1.96	0.64
1:X:176:ASP:O	1:X:177:TRP:CD1	2.51	0.64
1:X:79:ILE:O	1:X:80:LYS:C	2.35	0.64
1:X:96:ILE:HG22	1:X:177:TRP:HE1	1.63	0.64
1:X:169:GLN:O	1:X:170:LYS:CG	2.46	0.64
1:X:37:GLN:HE22	1:X:38:ASP:CG	2.02	0.64
1:X:149:HIS:HE1	1:X:215:ASP:OD2	1.81	0.63
1:X:227:ILE:HD11	1:X:293:LEU:C	2.19	0.63
1:X:44:ARG:HG2	1:X:56:GLU:OE2	1.98	0.63
1:X:326:TYR:C	1:X:328:VAL:H	2.00	0.63
1:X:169:GLN:O	1:X:170:LYS:CB	2.46	0.63
1:X:200:GLY:HA2	1:X:217:TRP:CD1	2.34	0.63
1:X:322:HIS:ND1	1:X:323:PRO:N	2.45	0.63
1:X:310:HIS:CD2	1:X:310:HIS:C	2.72	0.63
1:X:93:THR:O	1:X:95:ILE:HG12	1.98	0.63
1:X:34:TRP:HA	1:X:101:THR:O	1.99	0.63
1:X:12:VAL:CG2	1:X:13:TYR:N	2.62	0.63
1:X:164:MET:HG2	1:X:175:ILE:CG2	2.29	0.63
1:X:244:VAL:CG2	1:X:245:ARG:N	2.61	0.63

Continued on next page...

Continued from previous page...

Atom-1	Atom-2	Distance(Å)	Clash(Å)
1:X:293:LEU:HD22	1:X:293:LEU:N	2.13	0.62
1:X:294:VAL:O	1:X:295:SER:CB	2.47	0.62
1:X:34:TRP:CE3	1:X:101:THR:CG2	2.81	0.62
1:X:218:SER:O	1:X:221:CYS:N	2.32	0.62
1:X:71:LEU:CD2	1:X:72:LYS:HD2	2.29	0.62
1:X:75:LYS:C	1:X:77:LYS:N	2.50	0.62
1:X:125:LEU:O	1:X:128:ILE:CD1	2.45	0.62
1:X:16:VAL:CG1	1:X:17:ASN:N	2.63	0.62
1:X:103:LYS:HA	1:X:110:PRO:HA	1.81	0.62
1:X:154:MET:CE	1:X:211:ASP:O	2.47	0.62
1:X:47:GLY:O	1:X:54:VAL:N	2.27	0.62
1:X:252:THR:HG23	1:X:277:HIS:H	1.63	0.62
1:X:240:TYR:CE1	1:X:269:HIS:CD2	2.87	0.62
1:X:256:TYR:CD1	1:X:259:LEU:HD11	2.34	0.62
1:X:322:HIS:CG	1:X:323:PRO:HD2	2.34	0.62
1:X:168:GLN:O	1:X:169:GLN:C	2.34	0.62
1:X:106:VAL:O	1:X:108:LYS:NZ	2.31	0.62
1:X:154:MET:HE1	1:X:211:ASP:O	1.99	0.62
1:X:94:ASN:HB3	1:X:172:LEU:HD23	1.81	0.62
1:X:27:TYR:C	1:X:27:TYR:CD1	2.72	0.62
1:X:78:LYS:HA	1:X:81:ARG:NH2	2.13	0.62
1:X:75:LYS:CG	1:X:78:LYS:HB3	2.28	0.62
1:X:97:LYS:HB2	1:X:97:LYS:NZ	2.14	0.62
1:X:37:GLN:HE21	1:X:38:ASP:N	1.95	0.62
1:X:42:LEU:HA	1:X:57:ALA:HB2	1.81	0.62
1:X:37:GLN:HB2	1:X:104:ASP:OD2	1.99	0.61
1:X:304:LYS:HA	1:X:307:ARG:NE	2.10	0.61
1:X:12:VAL:CG2	1:X:13:TYR:H	2.13	0.61
1:X:281:ARG:N	1:X:284:ASN:ND2	2.48	0.61
1:X:76:LYS:O	1:X:80:LYS:CG	2.44	0.61
1:X:10:ALA:CB	1:X:183:TYR:CE2	2.81	0.61
1:X:171:LYS:HB2	3:X:402:HOH:O	2.00	0.61
1:X:176:ASP:O	1:X:177:TRP:CG	2.53	0.61
1:X:66:VAL:HG11	1:X:113:VAL:HG12	1.83	0.61
1:X:75:LYS:HE3	1:X:77:LYS:CE	2.20	0.61
1:X:330:LYS:N	1:X:330:LYS:HD2	2.14	0.61
1:X:147:TYR:O	1:X:150:SER:OG	2.17	0.61
1:X:149:HIS:CE1	1:X:215:ASP:OD2	2.53	0.61
1:X:287:HIS:H	1:X:287:HIS:CD2	2.19	0.61
1:X:256:TYR:CA	1:X:259:LEU:HD11	2.17	0.61
1:X:270:PHE:HA	1:X:273:ILE:HB	1.83	0.61
1:X:319:ALA:O	1:X:322:HIS:HB3	2.01	0.61

Continued on next page...

Continued from previous page...

Atom-1	Atom-2	Distance(Å)	Clash(Å)
1:X:278:SER:O	1:X:280:LYS:CD	2.48	0.61
1:X:107:SER:HB2	1:X:109:THR:HG1	1.63	0.61
1:X:191:VAL:HG13	1:X:203:LEU:HD23	1.83	0.61
1:X:240:TYR:N	1:X:240:TYR:HD2	1.99	0.61
1:X:116:TYR:HD1	3:X:374:HOH:O	1.83	0.61
1:X:254:GLU:HA	3:X:379:HOH:O	2.01	0.60
1:X:105:PRO:C	1:X:108:LYS:HD3	2.20	0.60
1:X:122:PHE:N	1:X:122:PHE:CD1	2.67	0.60
1:X:134:ILE:HD11	1:X:226:MET:HB3	1.82	0.60
1:X:4:PRO:O	1:X:263:HIS:CD2	2.55	0.60
1:X:85:ILE:HG22	1:X:86:LEU:N	2.16	0.60
1:X:189:TYR:O	1:X:190:ASN:C	2.40	0.60
1:X:298:ALA:O	1:X:302:LEU:CB	2.49	0.60
1:X:104:ASP:HB3	1:X:106:VAL:HG13	1.82	0.60
1:X:196:ARG:O	1:X:197:TYR:HD1	1.83	0.60
1:X:152:GLY:HA2	1:X:212:TYR:OH	2.02	0.60
1:X:135:ARG:HG2	1:X:324:TYR:CE2	2.35	0.60
1:X:48:ARG:HG3	1:X:53:GLU:OE1	2.01	0.60
1:X:238:ASP:C	1:X:240:TYR:N	2.52	0.60
1:X:106:VAL:CG2	1:X:107:SER:H	2.15	0.59
1:X:282:TRP:HB2	1:X:299:LEU:HD12	1.84	0.59
1:X:205:VAL:O	1:X:205:VAL:HG12	2.02	0.59
1:X:307:ARG:HH21	1:X:312:GLN:HE22	0.76	0.59
1:X:267:ASP:O	1:X:268:PRO:O	2.19	0.59
1:X:119:ASN:ND2	1:X:121:ASP:H	2.00	0.59
1:X:232:PRO:HG2	1:X:235:HIS:HA	1.83	0.59
1:X:48:ARG:CG	1:X:52:SER:O	2.43	0.59
1:X:62:ASN:O	1:X:64:GLU:HG3	2.02	0.59
1:X:51:TYR:HB2	1:X:71:LEU:HG	1.85	0.59
1:X:126:TYR:O	1:X:127:GLN:CG	2.50	0.59
1:X:287:HIS:CD2	1:X:290:ASN:ND2	2.71	0.59
1:X:64:GLU:O	1:X:66:VAL:HG23	2.01	0.59
1:X:75:LYS:C	1:X:77:LYS:H	2.06	0.59
1:X:191:VAL:HG13	1:X:203:LEU:CA	2.32	0.58
1:X:128:ILE:C	1:X:128:ILE:HD13	2.24	0.58
1:X:288:SER:HA	3:X:369:HOH:O	2.03	0.58
1:X:44:ARG:CG	1:X:56:GLU:OE2	2.51	0.58
1:X:154:MET:HE1	1:X:211:ASP:C	2.24	0.58
1:X:149:HIS:CD2	1:X:316:ALA:HB2	2.38	0.58
1:X:74:VAL:HG13	1:X:75:LYS:HG2	1.85	0.58
1:X:80:LYS:O	1:X:83:VAL:HG23	2.04	0.58
1:X:187:GLN:NE2	3:X:403:HOH:O	2.36	0.58

Continued on next page...

Continued from previous page...

Atom-1	Atom-2	Distance(Å)	Clash(Å)
1:X:268:PRO:O	1:X:269:HIS:CB	2.49	0.58
1:X:283:GLU:C	1:X:285:PHE:H	2.06	0.58
1:X:71:LEU:HD22	1:X:72:LYS:CD	2.33	0.58
1:X:75:LYS:O	1:X:75:LYS:HG3	2.04	0.58
1:X:315:THR:CG2	1:X:318:GLU:N	2.59	0.58
1:X:59:ASN:OD1	1:X:59:ASN:C	2.41	0.58
1:X:169:GLN:O	1:X:170:LYS:HG2	2.04	0.58
1:X:69:LYS:HE3	1:X:114:PHE:HZ	1.68	0.58
1:X:75:LYS:HG3	1:X:78:LYS:H	1.69	0.58
1:X:22:ARG:HG3	1:X:25:TRP:CH2	2.38	0.58
1:X:59:ASN:OD1	1:X:59:ASN:O	2.22	0.58
1:X:35:GLY:H	1:X:102:VAL:CA	2.09	0.58
1:X:48:ARG:HA	1:X:54:VAL:HG23	1.85	0.58
1:X:69:LYS:HE2	2:X:351:CCK:O61	2.04	0.58
1:X:103:LYS:O	1:X:105:PRO:HD3	2.03	0.58
1:X:37:GLN:CB	1:X:104:ASP:OD2	2.52	0.57
1:X:218:SER:O	1:X:220:GLY:N	2.36	0.57
1:X:182:PHE:HB2	3:X:380:HOH:O	2.03	0.57
1:X:122:PHE:CD2	1:X:160:PRO:HB3	2.39	0.57
1:X:287:HIS:HD2	1:X:287:HIS:H	1.51	0.57
1:X:176:ASP:N	2:X:351:CCK:O63	2.36	0.57
1:X:322:HIS:ND1	1:X:323:PRO:HD2	2.19	0.57
1:X:58:ILE:HG13	1:X:64:GLU:C	2.24	0.57
1:X:9:ARG:HH22	1:X:185:PRO:HB3	1.69	0.57
1:X:166:ASP:O	1:X:170:LYS:CA	2.52	0.57
1:X:287:HIS:CE1	1:X:289:GLU:HG3	2.39	0.57
1:X:37:GLN:HG2	1:X:38:ASP:N	2.17	0.57
1:X:62:ASN:O	1:X:64:GLU:N	2.38	0.57
1:X:131:ASP:O	1:X:135:ARG:CG	2.48	0.57
1:X:238:ASP:C	1:X:240:TYR:H	2.07	0.57
1:X:270:PHE:N	1:X:273:ILE:HD13	2.19	0.57
1:X:176:ASP:C	1:X:176:ASP:OD1	2.43	0.56
1:X:269:HIS:O	1:X:273:ILE:CD1	2.53	0.56
1:X:30:HIS:CG	1:X:84:LYS:HD3	2.40	0.56
1:X:104:ASP:HB2	1:X:106:VAL:HG22	1.87	0.56
1:X:304:LYS:HG2	1:X:307:ARG:HH11	1.70	0.56
1:X:66:VAL:CG1	1:X:99:ILE:HD12	2.36	0.56
1:X:188:GLU:HB3	1:X:208:GLN:CD	2.26	0.56
1:X:237:GLN:O	1:X:238:ASP:C	2.44	0.56
1:X:37:GLN:NE2	1:X:38:ASP:OD1	2.36	0.56
1:X:166:ASP:O	1:X:170:LYS:N	2.38	0.56
1:X:164:MET:HG2	1:X:175:ILE:HG21	1.88	0.56

Continued on next page...

Continued from previous page...

Atom-1	Atom-2	Distance(Å)	Clash(Å)
1:X:44:ARG:O	1:X:56:GLU:N	2.38	0.56
1:X:155:HIS:O	1:X:180:ALA:CA	2.54	0.56
1:X:208:GLN:N	3:X:452:HOH:O	2.39	0.56
1:X:269:HIS:C	1:X:271:ASN:H	2.08	0.56
1:X:244:VAL:CG1	1:X:273:ILE:HG22	2.32	0.56
1:X:304:LYS:CE	1:X:314:LEU:HD21	2.29	0.56
1:X:255:LEU:O	1:X:258:TYR:HB3	2.07	0.55
1:X:105:PRO:O	1:X:108:LYS:NZ	2.37	0.55
1:X:42:LEU:CD1	1:X:55:PHE:HB2	2.37	0.55
1:X:109:THR:HG22	1:X:110:PRO:HD2	1.88	0.55
1:X:168:GLN:HE21	1:X:168:GLN:HA	1.72	0.55
1:X:96:ILE:HB	1:X:175:ILE:HA	1.88	0.55
1:X:240:TYR:N	1:X:240:TYR:CD2	2.71	0.55
1:X:246:ILE:O	1:X:249:VAL:N	2.27	0.55
1:X:185:PRO:O	1:X:186:ALA:HB3	2.07	0.55
1:X:282:TRP:NE1	1:X:303:ASP:OD1	2.38	0.55
1:X:94:ASN:HB3	1:X:172:LEU:CD2	2.37	0.55
1:X:75:LYS:HG3	1:X:78:LYS:CB	2.37	0.55
1:X:317:LYS:HG3	1:X:318:GLU:H	1.71	0.55
1:X:30:HIS:CD2	3:X:425:HOH:O	2.57	0.55
1:X:36:ASN:HA	1:X:105:PRO:HD3	1.87	0.55
1:X:104:ASP:HB3	1:X:106:VAL:CG1	2.37	0.55
1:X:166:ASP:O	1:X:170:LYS:HA	2.06	0.55
1:X:75:LYS:HD3	1:X:78:LYS:HB2	1.88	0.55
1:X:35:GLY:N	1:X:102:VAL:HA	2.08	0.55
1:X:121:ASP:OD2	1:X:123:LYS:CB	2.42	0.55
1:X:207:TYR:CE2	1:X:310:HIS:HE1	2.25	0.55
1:X:228:PHE:O	1:X:229:ARG:HB2	2.08	0.54
1:X:58:ILE:HD11	1:X:63:ASN:HA	1.88	0.54
1:X:126:TYR:C	1:X:127:GLN:CG	2.75	0.54
1:X:37:GLN:CD	1:X:38:ASP:H	2.09	0.54
1:X:326:TYR:HE1	3:X:395:HOH:O	1.89	0.54
1:X:329:VAL:HG13	3:X:438:HOH:O	2.06	0.54
1:X:250:LEU:O	1:X:254:GLU:HG3	2.07	0.54
1:X:216:MET:HE2	1:X:315:THR:C	2.28	0.54
1:X:315:THR:CG2	1:X:318:GLU:HG3	2.37	0.54
1:X:42:LEU:CD1	1:X:68:VAL:HG12	2.37	0.54
1:X:326:TYR:C	1:X:328:VAL:N	2.59	0.54
1:X:205:VAL:CG1	1:X:264:ILE:CG2	2.80	0.54
1:X:117:ILE:HD12	1:X:164:MET:HB3	1.87	0.54
1:X:250:LEU:HB2	1:X:308:TYR:CE2	2.43	0.54
1:X:169:GLN:O	1:X:170:LYS:HB2	2.08	0.54

Continued on next page...

Continued from previous page...

Atom-1	Atom-2	Distance(Å)	Clash(Å)
1:X:196:ARG:HG2	1:X:196:ARG:HH21	1.72	0.54
1:X:172:LEU:HD23	1:X:172:LEU:C	2.27	0.54
1:X:224:ALA:HA	1:X:227:ILE:HG22	1.90	0.54
1:X:71:LEU:HD23	1:X:72:LYS:CD	2.37	0.54
1:X:130:THR:O	1:X:131:ASP:C	2.46	0.54
1:X:191:VAL:CG1	1:X:203:LEU:HD22	2.36	0.54
1:X:269:HIS:ND1	1:X:273:ILE:CD1	2.68	0.53
1:X:17:ASN:N	3:X:398:HOH:O	2.42	0.53
1:X:69:LYS:HE3	1:X:114:PHE:CZ	2.42	0.53
1:X:173:ARG:HG3	1:X:173:ARG:NH2	2.22	0.53
1:X:326:TYR:N	1:X:327:PRO:CD	2.70	0.53
1:X:330:LYS:O	1:X:331:GLU:C	2.45	0.53
1:X:292:HIS:N	1:X:292:HIS:CD2	2.71	0.53
1:X:199:LYS:NZ	1:X:204:LEU:HD21	2.23	0.53
1:X:286:ILE:HG13	1:X:286:ILE:O	2.08	0.53
1:X:104:ASP:CB	1:X:106:VAL:CG2	2.83	0.53
1:X:198:PHE:O	1:X:217:TRP:CD1	2.61	0.53
1:X:230:ARG:NH1	1:X:233:PHE:CE2	2.75	0.53
1:X:34:TRP:CZ3	1:X:110:PRO:HB3	2.41	0.53
1:X:126:TYR:O	1:X:127:GLN:HG3	2.07	0.53
1:X:34:TRP:CH2	1:X:110:PRO:HB2	2.43	0.53
1:X:280:LYS:HD2	1:X:280:LYS:N	2.24	0.53
1:X:167:HIS:HD2	1:X:170:LYS:HD3	1.74	0.53
1:X:261:LYS:C	1:X:262:TYR:CD2	2.75	0.53
1:X:269:HIS:C	1:X:271:ASN:N	2.60	0.53
1:X:283:GLU:HA	1:X:286:ILE:HG22	1.91	0.53
1:X:188:GLU:OE1	1:X:209:MET:HE3	2.09	0.53
1:X:155:HIS:HB2	1:X:177:TRP:CZ3	2.44	0.52
1:X:205:VAL:CG1	1:X:264:ILE:HG23	2.39	0.52
1:X:322:HIS:ND1	1:X:323:PRO:CD	2.72	0.52
1:X:193:VAL:O	1:X:194:ALA:CB	2.56	0.52
1:X:218:SER:O	1:X:219:LEU:C	2.47	0.52
1:X:141:LEU:CD2	1:X:219:LEU:CD2	2.87	0.52
1:X:317:LYS:HG3	1:X:318:GLU:N	2.24	0.52
1:X:105:PRO:HA	1:X:108:LYS:HA	1.91	0.52
1:X:70:ILE:HG22	1:X:111:ALA:HB2	1.90	0.52
1:X:132:PHE:O	1:X:134:ILE:N	2.42	0.52
1:X:156:ARG:CD	1:X:193:VAL:HG21	2.39	0.52
1:X:85:ILE:O	1:X:88:ASN:HB2	2.10	0.52
1:X:125:LEU:O	1:X:127:GLN:N	2.39	0.52
1:X:258:TYR:CD1	1:X:309:ASP:HA	2.43	0.52
1:X:122:PHE:CZ	1:X:160:PRO:HB2	2.45	0.52

Continued on next page...

Continued from previous page...

Atom-1	Atom-2	Distance(Å)	Clash(Å)
1:X:159:LYS:HE2	1:X:162:ASN:ND2	2.25	0.52
1:X:89:LEU:HB3	1:X:95:ILE:HG21	1.92	0.52
1:X:297:GLU:CB	1:X:324:TYR:CD1	2.74	0.52
1:X:121:ASP:OD1	1:X:123:LYS:CG	2.57	0.52
1:X:115:GLU:OE1	1:X:173:ARG:NH1	2.42	0.52
1:X:191:VAL:O	1:X:191:VAL:HG12	2.09	0.52
1:X:196:ARG:CG	1:X:196:ARG:O	2.57	0.52
1:X:36:ASN:OD1	1:X:36:ASN:N	2.41	0.52
1:X:199:LYS:HD3	1:X:204:LEU:CG	2.39	0.52
1:X:253:GLU:C	1:X:255:LEU:N	2.62	0.52
1:X:316:ALA:HB3	3:X:354:HOH:O	2.09	0.52
1:X:34:TRP:CH2	1:X:110:PRO:CB	2.93	0.52
1:X:279:ARG:HD3	1:X:280:LYS:N	2.24	0.52
1:X:330:LYS:N	1:X:330:LYS:CD	2.73	0.52
1:X:164:MET:C	1:X:165:ILE:HG13	2.30	0.52
1:X:227:ILE:HD12	1:X:293:LEU:HB3	1.91	0.52
1:X:10:ALA:HB3	1:X:14:ALA:CA	2.38	0.52
1:X:99:ILE:HB	1:X:113:VAL:O	2.10	0.51
1:X:167:HIS:CD2	1:X:170:LYS:HZ3	2.27	0.51
1:X:196:ARG:HG2	1:X:196:ARG:O	2.10	0.51
1:X:281:ARG:O	1:X:284:ASN:ND2	2.43	0.51
1:X:315:THR:HG21	1:X:317:LYS:HG3	1.92	0.51
1:X:322:HIS:ND1	1:X:324:TYR:N	2.58	0.51
1:X:141:LEU:O	1:X:144:ALA:HB3	2.09	0.51
1:X:166:ASP:HB3	1:X:171:LYS:HG2	1.91	0.51
1:X:202:GLU:OE1	1:X:310:HIS:CB	2.58	0.51
1:X:253:GLU:O	1:X:254:GLU:C	2.49	0.51
1:X:227:ILE:CD1	1:X:293:LEU:O	2.56	0.51
1:X:172:LEU:HD23	1:X:172:LEU:O	2.09	0.51
1:X:244:VAL:HG12	1:X:274:LEU:HD12	1.91	0.51
1:X:207:TYR:HD1	1:X:264:ILE:HD11	1.74	0.51
1:X:35:GLY:O	1:X:103:LYS:N	2.43	0.51
1:X:112:LEU:N	1:X:112:LEU:HD22	2.25	0.51
1:X:244:VAL:O	1:X:245:ARG:C	2.48	0.51
1:X:315:THR:CG2	1:X:318:GLU:CG	2.88	0.51
1:X:317:LYS:O	1:X:318:GLU:C	2.48	0.51
1:X:328:VAL:C	1:X:330:LYS:N	2.64	0.51
1:X:217:TRP:O	1:X:220:GLY:N	2.44	0.51
1:X:232:PRO:HG2	1:X:235:HIS:CA	2.40	0.51
1:X:67:VAL:HG11	2:X:351:CCK:C29	2.38	0.51
1:X:66:VAL:HG11	1:X:99:ILE:HD12	1.93	0.51
1:X:328:VAL:HG12	1:X:330:LYS:H	1.76	0.51

Continued on next page...

Continued from previous page...

Atom-1	Atom-2	Distance(Å)	Clash(Å)
1:X:18:SER:C	1:X:20:ARG:H	2.11	0.51
1:X:49:GLY:N	1:X:52:SER:O	2.37	0.51
1:X:125:LEU:CD1	1:X:126:TYR:N	2.71	0.51
1:X:130:THR:O	1:X:132:PHE:N	2.44	0.51
1:X:191:VAL:HG21	1:X:206:ASP:HA	1.93	0.51
1:X:288:SER:HA	1:X:291:ARG:CD	2.40	0.51
1:X:112:LEU:CB	1:X:114:PHE:CE1	2.94	0.51
1:X:22:ARG:O	1:X:23:GLU:C	2.49	0.51
1:X:236:GLY:HA3	1:X:242:GLN:OE1	2.10	0.51
1:X:332:GLN:O	1:X:333:SER:C	2.49	0.51
1:X:135:ARG:HH11	1:X:324:TYR:CA	2.22	0.50
1:X:38:ASP:O	1:X:60:ILE:HD12	2.11	0.50
1:X:75:LYS:N	3:X:450:HOH:O	2.42	0.50
1:X:187:GLN:O	1:X:189:TYR:HD2	1.93	0.50
1:X:188:GLU:HB3	1:X:208:GLN:NE2	2.26	0.50
1:X:244:VAL:HG23	1:X:245:ARG:N	2.25	0.50
1:X:122:PHE:CD2	1:X:160:PRO:CB	2.95	0.50
1:X:66:VAL:HG12	1:X:67:VAL:N	2.27	0.50
1:X:308:TYR:O	1:X:310:HIS:N	2.45	0.50
1:X:262:TYR:N	1:X:262:TYR:CD2	2.78	0.50
1:X:287:HIS:O	1:X:288:SER:C	2.50	0.50
1:X:297:GLU:O	1:X:300:ASP:N	2.44	0.50
1:X:108:LYS:HB2	3:X:371:HOH:O	2.12	0.50
1:X:201:PRO:HD3	1:X:217:TRP:CE2	2.46	0.50
1:X:51:TYR:O	1:X:71:LEU:HB2	2.12	0.50
1:X:117:ILE:HD13	1:X:118:ASN:C	2.32	0.50
1:X:55:PHE:N	1:X:55:PHE:HD1	2.07	0.50
1:X:115:GLU:CD	1:X:173:ARG:NH2	2.53	0.49
1:X:141:LEU:HD23	1:X:219:LEU:HD21	1.94	0.49
1:X:52:SER:HB2	1:X:69:LYS:HG3	1.93	0.49
1:X:138:MET:HE1	1:X:219:LEU:HD13	1.93	0.49
1:X:241:ASP:O	1:X:244:VAL:HG22	2.11	0.49
1:X:261:LYS:HG2	1:X:262:TYR:CE2	2.48	0.49
1:X:267:ASP:OD1	1:X:268:PRO:CD	2.60	0.49
1:X:37:GLN:CD	1:X:38:ASP:N	2.65	0.49
1:X:262:TYR:N	1:X:262:TYR:HD2	2.11	0.49
1:X:294:VAL:CG1	1:X:299:LEU:CD2	2.76	0.49
1:X:125:LEU:CD1	1:X:125:LEU:C	2.73	0.49
1:X:145:LEU:HD12	1:X:215:ASP:HB3	1.94	0.49
1:X:66:VAL:CG1	1:X:99:ILE:CD1	2.91	0.49
1:X:20:ARG:NH1	1:X:151:LYS:NZ	2.57	0.49
1:X:71:LEU:HD23	1:X:72:LYS:HD3	1.95	0.49

Continued on next page...

Continued from previous page...

Atom-1	Atom-2	Distance(Å)	Clash(Å)
1:X:75:LYS:O	1:X:76:LYS:C	2.49	0.49
1:X:224:ALA:O	1:X:227:ILE:HG22	2.13	0.49
1:X:281:ARG:N	1:X:284:ASN:HD22	2.09	0.49
1:X:225:SER:HB2	1:X:230:ARG:O	2.13	0.49
1:X:304:LYS:CG	1:X:307:ARG:HH11	2.26	0.49
1:X:18:SER:C	1:X:20:ARG:N	2.67	0.49
1:X:117:ILE:C	1:X:117:ILE:CD1	2.76	0.48
1:X:218:SER:C	1:X:220:GLY:N	2.66	0.48
1:X:81:ARG:O	1:X:82:GLU:C	2.52	0.48
1:X:159:LYS:HE2	1:X:162:ASN:HD21	1.78	0.48
1:X:131:ASP:O	1:X:134:ILE:HG22	2.12	0.48
1:X:317:LYS:CG	1:X:318:GLU:N	2.75	0.48
1:X:168:GLN:HE21	1:X:168:GLN:CA	2.27	0.48
1:X:279:ARG:HH21	1:X:279:ARG:HG3	1.77	0.48
1:X:138:MET:CE	1:X:223:LEU:HB2	2.44	0.48
1:X:164:MET:HG2	1:X:175:ILE:HG23	1.95	0.48
1:X:71:LEU:CD2	1:X:71:LEU:C	2.78	0.48
1:X:71:LEU:HD22	1:X:72:LYS:O	2.13	0.48
1:X:240:TYR:HE1	1:X:269:HIS:CD2	2.30	0.48
1:X:281:ARG:NH2	1:X:283:GLU:OE1	2.46	0.48
1:X:124:GLN:O	1:X:127:GLN:OE1	2.32	0.48
1:X:267:ASP:C	1:X:268:PRO:O	2.52	0.48
1:X:269:HIS:C	1:X:273:ILE:CD1	2.75	0.48
1:X:128:ILE:HD13	1:X:129:LEU:H	1.73	0.48
1:X:307:ARG:HD3	1:X:312:GLN:OE1	2.13	0.48
1:X:173:ARG:HG3	1:X:173:ARG:HH21	1.78	0.48
1:X:262:TYR:HE1	1:X:310:HIS:CE1	2.32	0.48
1:X:73:PRO:O	1:X:74:VAL:C	2.52	0.48
1:X:297:GLU:HB2	1:X:324:TYR:CD1	2.44	0.48
1:X:322:HIS:CG	1:X:323:PRO:CD	2.97	0.48
1:X:103:LYS:HB3	3:X:381:HOH:O	2.13	0.48
1:X:135:ARG:HA	1:X:325:PHE:HE1	1.78	0.48
1:X:108:LYS:N	1:X:108:LYS:HE2	2.28	0.47
1:X:187:GLN:H	1:X:209:MET:HE2	1.75	0.47
1:X:89:LEU:O	1:X:90:ARG:C	2.52	0.47
1:X:125:LEU:HD22	1:X:128:ILE:HD12	1.94	0.47
1:X:39:ASP:HB2	3:X:429:HOH:O	2.13	0.47
1:X:223:LEU:HD12	1:X:302:LEU:CD1	2.12	0.47
1:X:31:VAL:CG1	1:X:31:VAL:O	2.47	0.47
1:X:164:MET:CG	1:X:175:ILE:HG21	2.43	0.47
1:X:201:PRO:HD3	1:X:217:TRP:CD2	2.49	0.47
1:X:112:LEU:HB3	1:X:114:PHE:CE1	2.49	0.47

Continued on next page...

Continued from previous page...

Atom-1	Atom-2	Distance(Å)	Clash(Å)
1:X:173:ARG:CG	1:X:173:ARG:HH21	2.27	0.47
1:X:237:GLN:H	1:X:241:ASP:HB3	1.80	0.47
1:X:46:LEU:N	1:X:54:VAL:O	2.48	0.47
1:X:62:ASN:O	1:X:64:GLU:CG	2.62	0.47
1:X:69:LYS:O	1:X:111:ALA:HB1	2.14	0.47
1:X:329:VAL:O	1:X:330:LYS:C	2.52	0.47
1:X:154:MET:O	1:X:156:ARG:HG2	2.15	0.47
1:X:156:ARG:NE	1:X:193:VAL:HG21	2.30	0.47
1:X:30:HIS:O	1:X:32:PRO:HD3	2.15	0.47
1:X:122:PHE:O	1:X:126:TYR:N	2.42	0.47
2:X:351:CCK:H38	2:X:351:CCK:N4	2.30	0.47
1:X:37:GLN:OE1	1:X:106:VAL:HG13	2.15	0.47
1:X:48:ARG:HG3	1:X:53:GLU:HA	1.95	0.47
1:X:154:MET:O	1:X:155:HIS:C	2.53	0.47
1:X:287:HIS:N	1:X:287:HIS:CD2	2.83	0.47
1:X:293:LEU:H	1:X:293:LEU:HD22	1.78	0.47
1:X:66:VAL:HG12	1:X:67:VAL:H	1.80	0.47
1:X:10:ALA:HB2	1:X:183:TYR:CZ	2.48	0.47
1:X:191:VAL:CG1	1:X:203:LEU:HA	2.45	0.47
1:X:187:GLN:HB3	1:X:189:TYR:CE2	2.49	0.47
1:X:261:LYS:O	1:X:262:TYR:HD2	1.97	0.47
1:X:309:ASP:C	1:X:311:GLN:H	2.17	0.47
1:X:330:LYS:HG2	1:X:330:LYS:O	2.15	0.47
1:X:176:ASP:CG	1:X:177:TRP:N	2.68	0.47
1:X:237:GLN:O	1:X:238:ASP:O	2.33	0.47
1:X:13:TYR:CE2	1:X:150:SER:HA	2.49	0.46
1:X:288:SER:CA	3:X:369:HOH:O	2.62	0.46
1:X:66:VAL:HG13	1:X:99:ILE:CD1	2.45	0.46
1:X:204:LEU:HD13	1:X:243:LEU:HB2	1.97	0.46
1:X:48:ARG:HG2	1:X:49:GLY:N	2.30	0.46
1:X:149:HIS:HE1	1:X:215:ASP:CG	2.19	0.46
1:X:282:TRP:HB2	1:X:299:LEU:CD1	2.46	0.46
1:X:130:THR:C	1:X:132:PHE:N	2.66	0.46
1:X:244:VAL:C	1:X:246:ILE:N	2.67	0.46
1:X:46:LEU:HD21	1:X:56:GLU:CB	2.24	0.46
1:X:43:VAL:N	1:X:56:GLU:O	2.48	0.46
1:X:156:ARG:NH2	1:X:179:LEU:O	2.48	0.46
1:X:207:TYR:HE2	1:X:310:HIS:HE1	1.63	0.46
1:X:283:GLU:HA	1:X:286:ILE:CG2	2.45	0.46
1:X:112:LEU:CB	1:X:114:PHE:CZ	2.96	0.46
1:X:228:PHE:O	1:X:290:ASN:ND2	2.49	0.46
1:X:256:TYR:O	1:X:257:GLY:C	2.53	0.46

Continued on next page...

Continued from previous page...

Atom-1	Atom-2	Distance(Å)	Clash(Å)
1:X:299:LEU:CD2	1:X:299:LEU:N	2.78	0.46
1:X:37:GLN:HG3	3:X:360:HOH:O	2.13	0.46
1:X:321:GLU:HB2	3:X:405:HOH:O	2.15	0.46
1:X:122:PHE:CE2	1:X:160:PRO:HB2	2.50	0.46
1:X:219:LEU:C	1:X:219:LEU:HD13	2.36	0.46
1:X:23:GLU:O	1:X:84:LYS:NZ	2.49	0.46
1:X:310:HIS:HA	1:X:313:ARG:NE	2.31	0.46
1:X:70:ILE:HG22	1:X:111:ALA:CB	2.44	0.46
1:X:236:GLY:HA2	1:X:245:ARG:HG3	1.98	0.46
1:X:97:LYS:HB2	1:X:97:LYS:HZ2	1.80	0.46
1:X:154:MET:HE3	1:X:211:ASP:C	2.36	0.46
1:X:216:MET:O	1:X:220:GLY:N	2.48	0.46
1:X:256:TYR:HA	1:X:259:LEU:HD12	1.89	0.46
1:X:268:PRO:O	1:X:269:HIS:HB3	2.16	0.45
1:X:317:LYS:O	1:X:320:MET:N	2.49	0.45
1:X:250:LEU:HD23	1:X:250:LEU:N	2.31	0.45
1:X:288:SER:OG	1:X:289:GLU:N	2.48	0.45
1:X:48:ARG:CA	1:X:54:VAL:HG23	2.46	0.45
1:X:21:SER:HB3	1:X:23:GLU:HG3	1.98	0.45
1:X:97:LYS:N	1:X:115:GLU:OE2	2.46	0.45
1:X:154:MET:HE3	1:X:211:ASP:O	2.16	0.45
1:X:217:TRP:O	1:X:218:SER:C	2.55	0.45
1:X:304:LYS:CD	1:X:307:ARG:NH1	2.78	0.45
1:X:37:GLN:C	3:X:383:HOH:O	2.54	0.45
1:X:52:SER:CB	1:X:69:LYS:HD2	2.46	0.45
1:X:81:ARG:CG	1:X:82:GLU:N	2.76	0.45
1:X:85:ILE:HG12	1:X:153:ILE:HD13	1.97	0.45
1:X:205:VAL:HG11	1:X:264:ILE:HD13	1.98	0.45
1:X:227:ILE:HG23	1:X:228:PHE:N	2.30	0.45
1:X:244:VAL:CG1	1:X:273:ILE:CG2	2.92	0.45
1:X:278:SER:O	1:X:279:ARG:C	2.55	0.45
1:X:107:SER:CA	1:X:108:LYS:HE2	2.44	0.45
1:X:99:ILE:HD11	1:X:115:GLU:HA	1.99	0.45
1:X:205:VAL:HG11	1:X:264:ILE:HG23	1.87	0.45
1:X:140:GLU:OE1	1:X:140:GLU:HA	2.16	0.45
1:X:51:TYR:CD1	1:X:78:LYS:HE2	2.52	0.45
1:X:156:ARG:CB	1:X:156:ARG:HH21	2.29	0.45
1:X:138:MET:CE	1:X:219:LEU:CD1	2.95	0.45
1:X:138:MET:CE	1:X:219:LEU:HD11	2.46	0.45
1:X:261:LYS:HG2	1:X:262:TYR:HE2	1.81	0.45
1:X:288:SER:O	1:X:290:ASN:N	2.50	0.45
1:X:139:TYR:CE1	1:X:320:MET:HE3	2.51	0.45

Continued on next page...

Continued from previous page...

Atom-1	Atom-2	Distance(Å)	Clash(Å)
1:X:298:ALA:N	1:X:324:TYR:CD1	2.85	0.45
1:X:240:TYR:CD1	1:X:269:HIS:CD2	3.05	0.45
1:X:252:THR:HG21	1:X:277:HIS:N	2.26	0.45
1:X:277:HIS:N	1:X:277:HIS:CD2	2.84	0.45
1:X:141:LEU:HD23	1:X:219:LEU:HD22	1.97	0.44
1:X:231:GLU:HA	1:X:232:PRO:HA	1.80	0.44
1:X:27:TYR:CD1	1:X:28:GLU:N	2.85	0.44
1:X:168:GLN:O	1:X:169:GLN:O	2.35	0.44
1:X:222:MET:O	1:X:225:SER:OG	2.26	0.44
1:X:58:ILE:HD11	1:X:63:ASN:O	2.18	0.44
1:X:266:LEU:O	1:X:267:ASP:C	2.54	0.44
1:X:15:GLU:HG2	1:X:15:GLU:O	2.17	0.44
1:X:191:VAL:HG13	1:X:203:LEU:CB	2.47	0.44
1:X:283:GLU:C	1:X:285:PHE:N	2.71	0.44
1:X:75:LYS:CB	1:X:77:LYS:NZ	2.79	0.44
1:X:3:GLY:H	1:X:4:PRO:CD	2.31	0.44
1:X:13:TYR:CE1	1:X:150:SER:HA	2.53	0.44
1:X:140:GLU:O	1:X:141:LEU:C	2.56	0.44
1:X:166:ASP:CB	1:X:171:LYS:HG2	2.47	0.44
1:X:154:MET:HA	1:X:215:ASP:OD2	2.17	0.44
1:X:173:ARG:HD3	3:X:402:HOH:O	2.18	0.44
1:X:149:HIS:CE1	1:X:215:ASP:CB	3.01	0.44
1:X:209:MET:HG3	3:X:433:HOH:O	2.17	0.44
1:X:225:SER:CB	1:X:230:ARG:O	2.65	0.44
1:X:270:PHE:O	1:X:274:LEU:HB2	2.18	0.44
1:X:315:THR:CG2	1:X:317:LYS:HG3	2.48	0.44
1:X:44:ARG:HG3	1:X:56:GLU:HB3	1.99	0.44
1:X:68:VAL:HG22	1:X:112:LEU:O	2.17	0.44
1:X:262:TYR:O	1:X:263:HIS:O	2.37	0.43
1:X:99:ILE:HA	3:X:443:HOH:O	2.18	0.43
1:X:93:THR:HA	3:X:420:HOH:O	2.17	0.43
1:X:156:ARG:HB2	1:X:180:ALA:HA	2.00	0.43
1:X:202:GLU:HG2	1:X:202:GLU:H	1.66	0.43
1:X:34:TRP:CH2	1:X:110:PRO:HB3	2.53	0.43
1:X:149:HIS:CE1	1:X:215:ASP:HB2	2.54	0.43
2:X:351:CCK:C38	2:X:351:CCK:N4	2.80	0.43
1:X:328:VAL:HG12	1:X:330:LYS:N	2.33	0.43
1:X:190:ASN:ND2	1:X:192:ARG:H	2.17	0.43
1:X:54:VAL:HG13	1:X:69:LYS:HB2	1.99	0.43
1:X:157:ASP:OD2	1:X:162:ASN:ND2	2.52	0.43
1:X:138:MET:SD	1:X:226:MET:HE1	2.57	0.43
1:X:244:VAL:O	1:X:246:ILE:N	2.52	0.43

Continued on next page...

Continued from previous page...

Atom-1	Atom-2	Distance(Å)	Clash(Å)
1:X:256:TYR:O	1:X:260:LYS:HG3	2.18	0.43
1:X:20:ARG:CZ	1:X:151:LYS:HZ1	2.30	0.43
1:X:172:LEU:O	1:X:173:ARG:CD	2.61	0.43
1:X:323:PRO:O	1:X:325:PHE:N	2.52	0.43
1:X:190:ASN:ND2	1:X:192:ARG:N	2.66	0.43
1:X:191:VAL:CG1	1:X:203:LEU:CA	2.96	0.43
1:X:62:ASN:HD22	1:X:64:GLU:CG	2.17	0.43
1:X:102:VAL:O	1:X:111:ALA:N	2.46	0.43
1:X:134:ILE:HG22	1:X:135:ARG:HG3	2.00	0.43
1:X:245:ARG:HE	1:X:245:ARG:HA	1.84	0.43
1:X:103:LYS:O	1:X:105:PRO:CD	2.67	0.43
1:X:269:HIS:O	1:X:272:ASP:N	2.52	0.43
1:X:45:LYS:CE	1:X:55:PHE:CE2	3.02	0.43
1:X:330:LYS:O	1:X:332:GLN:N	2.51	0.43
1:X:182:PHE:HB3	1:X:184:HIS:CE1	2.53	0.43
1:X:179:LEU:HA	1:X:179:LEU:HD23	1.81	0.43
1:X:256:TYR:HD1	1:X:259:LEU:HD11	1.84	0.43
1:X:5:ALA:HA	1:X:263:HIS:HB2	2.00	0.43
1:X:119:ASN:ND2	3:X:373:HOH:O	2.51	0.42
1:X:44:ARG:HG3	1:X:56:GLU:OE2	2.19	0.42
1:X:143:LYS:HE3	1:X:143:LYS:HB2	1.71	0.42
1:X:125:LEU:CD2	1:X:128:ILE:HD11	2.45	0.42
1:X:139:TYR:HE1	1:X:320:MET:HB3	1.84	0.42
1:X:164:MET:HE3	1:X:175:ILE:HD13	2.02	0.42
1:X:89:LEU:HA	1:X:89:LEU:HD23	1.79	0.42
1:X:211:ASP:O	1:X:212:TYR:C	2.57	0.42
1:X:164:MET:CG	1:X:175:ILE:CG2	2.97	0.42
1:X:198:PHE:O	1:X:217:TRP:HD1	2.03	0.42
1:X:299:LEU:HD22	1:X:299:LEU:N	2.34	0.42
1:X:250:LEU:CB	1:X:308:TYR:CE2	3.02	0.42
1:X:317:LYS:HD3	1:X:317:LYS:C	2.40	0.42
1:X:283:GLU:O	1:X:285:PHE:N	2.53	0.42
1:X:48:ARG:HG3	1:X:53:GLU:CD	2.40	0.42
1:X:20:ARG:CZ	1:X:151:LYS:NZ	2.82	0.42
1:X:22:ARG:HG2	1:X:26:ASP:HB2	2.02	0.42
1:X:287:HIS:CE1	1:X:289:GLU:HB2	2.54	0.42
1:X:52:SER:HB2	1:X:69:LYS:CG	2.49	0.42
1:X:187:GLN:N	1:X:209:MET:CE	2.80	0.42
1:X:191:VAL:HG21	1:X:206:ASP:C	2.40	0.42
1:X:322:HIS:ND1	1:X:322:HIS:C	2.73	0.42
1:X:217:TRP:CZ2	1:X:246:ILE:HD13	2.55	0.42
1:X:120:THR:O	1:X:121:ASP:O	2.38	0.42

Continued on next page...

Continued from previous page...

Atom-1	Atom-2	Distance(Å)	Clash(Å)
1:X:122:PHE:CE2	1:X:160:PRO:CB	3.03	0.42
1:X:12:VAL:HG23	1:X:13:TYR:CD2	2.55	0.42
1:X:228:PHE:C	1:X:229:ARG:HG2	2.40	0.42
1:X:279:ARG:C	1:X:280:LYS:HD2	2.40	0.42
1:X:10:ALA:N	1:X:183:TYR:OH	2.46	0.42
1:X:287:HIS:NE2	1:X:290:ASN:ND2	2.68	0.41
1:X:34:TRP:CZ3	1:X:101:THR:CG2	2.97	0.41
1:X:58:ILE:CD1	1:X:63:ASN:HA	2.50	0.41
1:X:96:ILE:O	1:X:96:ILE:HG23	2.18	0.41
1:X:119:ASN:HD21	1:X:121:ASP:H	1.66	0.41
1:X:316:ALA:N	3:X:400:HOH:O	2.52	0.41
1:X:105:PRO:O	1:X:108:LYS:CE	2.68	0.41
1:X:98:LEU:HD11	1:X:112:LEU:HD12	2.02	0.41
1:X:242:GLN:O	1:X:246:ILE:HG13	2.20	0.41
1:X:267:ASP:OD1	1:X:268:PRO:N	2.53	0.41
1:X:309:ASP:C	1:X:311:GLN:N	2.73	0.41
1:X:317:LYS:HD3	1:X:318:GLU:N	2.35	0.41
1:X:67:VAL:HG11	1:X:114:PHE:HB2	1.96	0.41
1:X:11:ARG:NH1	1:X:318:GLU:CD	2.74	0.41
1:X:129:LEU:O	1:X:130:THR:HG23	2.19	0.41
1:X:139:TYR:O	1:X:142:LEU:HB2	2.20	0.41
1:X:286:ILE:HB	1:X:294:VAL:HG21	2.01	0.41
1:X:310:HIS:C	1:X:310:HIS:HD2	2.20	0.41
1:X:280:LYS:CD	1:X:280:LYS:N	2.83	0.41
1:X:329:VAL:O	1:X:330:LYS:HD2	2.19	0.41
1:X:262:TYR:O	1:X:263:HIS:C	2.58	0.41
1:X:42:LEU:HD12	1:X:55:PHE:CG	2.55	0.41
1:X:10:ALA:CB	1:X:183:TYR:HE2	2.32	0.41
1:X:232:PRO:HD2	1:X:235:HIS:CG	2.56	0.41
1:X:62:ASN:ND2	1:X:64:GLU:HG3	2.17	0.41
1:X:106:VAL:CG2	1:X:107:SER:N	2.70	0.41
1:X:155:HIS:ND1	1:X:174:LEU:HD21	2.35	0.41
1:X:27:TYR:CD1	1:X:81:ARG:HB3	2.56	0.41
1:X:37:GLN:OE1	1:X:106:VAL:CG1	2.69	0.41
1:X:196:ARG:HG2	1:X:196:ARG:NH2	2.36	0.41
1:X:253:GLU:O	1:X:256:TYR:N	2.54	0.41
1:X:154:MET:O	1:X:156:ARG:N	2.54	0.41
1:X:173:ARG:O	1:X:175:ILE:N	2.54	0.41
1:X:154:MET:CB	1:X:215:ASP:OD2	2.68	0.41
1:X:7:GLY:HA2	3:X:433:HOH:O	2.21	0.41
1:X:159:LYS:HG2	1:X:162:ASN:HD22	1.86	0.41
1:X:135:ARG:NH1	1:X:324:TYR:CD1	2.89	0.40

Continued on next page...

Continued from previous page...

Atom-1	Atom-2	Distance(Å)	Clash(Å)
1:X:255:LEU:HG	1:X:308:TYR:CZ	2.56	0.40
1:X:3:GLY:N	1:X:4:PRO:CD	2.84	0.40
1:X:97:LYS:HB3	1:X:115:GLU:CD	2.40	0.40
1:X:278:SER:O	1:X:280:LYS:CE	2.69	0.40
1:X:304:LYS:HD2	1:X:307:ARG:NH1	2.35	0.40
1:X:71:LEU:HD13	1:X:72:LYS:O	2.21	0.40
1:X:207:TYR:HE1	3:X:390:HOH:O	2.04	0.40
1:X:263:HIS:O	1:X:264:ILE:HG13	2.22	0.40
1:X:190:ASN:HD21	1:X:192:ARG:CA	2.34	0.40
1:X:226:MET:O	3:X:375:HOH:O	2.22	0.40
1:X:270:PHE:CA	1:X:273:ILE:HD13	2.51	0.40
1:X:62:ASN:O	1:X:63:ASN:C	2.60	0.40
1:X:195:SER:C	1:X:197:TYR:H	2.25	0.40
1:X:249:VAL:HG12	1:X:250:LEU:N	2.36	0.40
1:X:281:ARG:H	1:X:284:ASN:ND2	2.18	0.40
1:X:75:LYS:CG	1:X:78:LYS:CB	2.99	0.40

There are no symmetry-related clashes.

5.3 Torsion angles

5.3.1 Protein backbone ⓘ

In the following table, the Percentiles column shows the percent Ramachandran outliers of the chain as a percentile score with respect to all X-ray entries followed by that with respect to entries of similar resolution. The Analysed column shows the number of residues for which the backbone conformation was analysed, and the total number of residues.

Mol	Chain	Analysed	Favoured	Allowed	Outliers	Percentiles
1	X	332/339 (98%)	201 (60%)	73 (22%)	58 (18%)	0 1

All (58) Ramachandran outliers are listed below:

Mol	Chain	Res	Type
1	X	6	ALA
1	X	38	ASP
1	X	63	ASN
1	X	121	ASP
1	X	126	TYR
1	X	134	ILE
1	X	170	LYS

Continued on next page...

Continued from previous page...

Mol	Chain	Res	Type
1	X	229	ARG
1	X	270	PHE
1	X	274	LEU
1	X	294	VAL
1	X	295	SER
1	X	332	GLN
1	X	14	ALA
1	X	19	LEU
1	X	76	LYS
1	X	90	ARG
1	X	129	LEU
1	X	185	PRO
1	X	194	ALA
1	X	254	GLU
1	X	263	HIS
1	X	268	PRO
1	X	289	GLU
1	X	330	LYS
1	X	331	GLU
1	X	333	SER
1	X	48	ARG
1	X	105	PRO
1	X	127	GLN
1	X	155	HIS
1	X	168	GLN
1	X	176	ASP
1	X	180	ALA
1	X	196	ARG
1	X	219	LEU
1	X	238	ASP
1	X	269	HIS
1	X	284	ASN
1	X	297	GLU
1	X	309	ASP
1	X	324	TYR
1	X	327	PRO
1	X	329	VAL
1	X	2	PRO
1	X	108	LYS
1	X	177	TRP
1	X	212	TYR
1	X	218	SER

Continued on next page...

Continued from previous page...

Mol	Chain	Res	Type
1	X	273	ILE
1	X	312	GLN
1	X	74	VAL
1	X	80	LYS
1	X	247	ALA
1	X	24	TYR
1	X	165	ILE
1	X	43	VAL
1	X	16	VAL

5.3.2 Protein sidechains ⓘ

In the following table, the Percentiles column shows the percent sidechain outliers of the chain as a percentile score with respect to all X-ray entries followed by that with respect to entries of similar resolution. The Analysed column shows the number of residues for which the sidechain conformation was analysed, and the total number of residues.

Mol	Chain	Analysed	Rotameric	Outliers	Percentiles
1	X	303/306 (99%)	250 (82%)	53 (18%)	3 13

All (53) residues with a non-rotameric sidechain are listed below:

Mol	Chain	Res	Type
1	X	2	PRO
1	X	20	ARG
1	X	28	GLU
1	X	36	ASN
1	X	37	GLN
1	X	42	LEU
1	X	48	ARG
1	X	51	TYR
1	X	54	VAL
1	X	55	PHE
1	X	62	ASN
1	X	63	ASN
1	X	65	ARG
1	X	68	VAL
1	X	71	LEU
1	X	72	LYS
1	X	83	VAL
1	X	85	ILE
1	X	100	ASP

Continued on next page...

Continued from previous page...

Mol	Chain	Res	Type
1	X	108	LYS
1	X	109	THR
1	X	112	LEU
1	X	117	ILE
1	X	119	ASN
1	X	120	THR
1	X	122	PHE
1	X	128	ILE
1	X	151	LYS
1	X	156	ARG
1	X	173	ARG
1	X	181	GLU
1	X	192	ARG
1	X	199	LYS
1	X	209	MET
1	X	240	TYR
1	X	254	GLU
1	X	255	LEU
1	X	259	LEU
1	X	267	ASP
1	X	271	ASN
1	X	273	ILE
1	X	274	LEU
1	X	278	SER
1	X	279	ARG
1	X	281	ARG
1	X	286	ILE
1	X	287	HIS
1	X	292	HIS
1	X	310	HIS
1	X	312	GLN
1	X	317	LYS
1	X	330	LYS
1	X	332	GLN

Some sidechains can be flipped to improve hydrogen bonding and reduce clashes. All (22) such sidechains are listed below:

Mol	Chain	Res	Type
1	X	30	HIS
1	X	37	GLN
1	X	62	ASN
1	X	88	ASN

Continued on next page...

Continued from previous page...

Mol	Chain	Res	Type
1	X	119	ASN
1	X	124	GLN
1	X	149	HIS
1	X	161	HIS
1	X	168	GLN
1	X	169	GLN
1	X	184	HIS
1	X	187	GLN
1	X	190	ASN
1	X	208	GLN
1	X	237	GLN
1	X	271	ASN
1	X	276	GLN
1	X	277	HIS
1	X	284	ASN
1	X	287	HIS
1	X	292	HIS
1	X	312	GLN

5.3.3 RNA ⓘ

There are no RNA chains in this entry.

5.4 Non-standard residues in protein, DNA, RNA chains ⓘ

There are no non-standard protein/DNA/RNA residues in this entry.

5.5 Carbohydrates ⓘ

There are no carbohydrates in this entry.

5.6 Ligand geometry ⓘ

1 ligand is modelled in this entry.

In the following table, the Counts columns list the number of bonds (or angles) for which Mogul statistics could be retrieved, the number of bonds (or angles) that are observed in the model and the number of bonds (or angles) that are defined in the chemical component dictionary. The Link column lists molecule types, if any, to which the group is linked. The Z score for a bond length (or angle) is the number of standard deviations the observed value is removed from the expected

value. A bond length (or angle) with $|Z| > 2$ is considered an outlier worth inspection. RMSZ is the root-mean-square of all Z scores of the bond lengths (or angles).

Mol	Type	Chain	Res	Link	Bond lengths			Bond angles		
					Counts	RMSZ	$\# Z > 2$	Counts	RMSZ	$\# Z > 2$
2	CCK	X	351	-	31,31,31	3.10	7 (22%)	42,44,44	4.47	18 (42%)

In the following table, the Chirals column lists the number of chiral outliers, the number of chiral centers analysed, the number of these observed in the model and the number defined in the chemical component dictionary. Similar counts are reported in the Torsion and Rings columns. '-' means no outliers of that kind were identified.

Mol	Type	Chain	Res	Link	Chirals	Torsions	Rings
2	CCK	X	351	-	-	0/14/16/16	0/2/4/4

All (7) bond length outliers are listed below:

Mol	Chain	Res	Type	Atoms	Z	Observed(Å)	Ideal(Å)
2	X	351	CCK	C5-N15	-13.43	1.28	1.43
2	X	351	CCK	N20-N13	-5.82	1.25	1.36
2	X	351	CCK	C3-N13	-5.15	1.34	1.45
2	X	351	CCK	C29-N15	4.11	1.45	1.39
2	X	351	CCK	C26-N15	2.80	1.43	1.39
2	X	351	CCK	C35-C36	2.66	1.42	1.36
2	X	351	CCK	C36-C37	2.51	1.43	1.39

All (18) bond angle outliers are listed below:

Mol	Chain	Res	Type	Atoms	Z	Observed(°)	Ideal(°)
2	X	351	CCK	C29-N15-C26	-22.24	99.13	108.13
2	X	351	CCK	C28-C29-N15	10.82	114.35	107.61
2	X	351	CCK	C3-N13-C17	-6.14	124.53	130.33
2	X	351	CCK	C51-C46-C48	-4.53	102.27	111.76
2	X	351	CCK	C26-N15-C5	4.06	130.25	125.69
2	X	351	CCK	C19-N20-N13	4.03	109.09	103.99
2	X	351	CCK	C29-N15-C5	3.85	130.02	125.69
2	X	351	CCK	C36-C35-C18	-3.84	114.79	120.83
2	X	351	CCK	C3-N13-N20	3.73	123.96	119.14
2	X	351	CCK	C35-C18-C17	3.34	124.54	119.87
2	X	351	CCK	C6-N1-C2	3.32	122.36	117.40
2	X	351	CCK	C37-N44-C46	3.22	128.80	123.58
2	X	351	CCK	O63-C59-C57	3.00	121.33	113.80
2	X	351	CCK	O61-C59-C57	-2.89	116.09	123.19
2	X	351	CCK	C5-N4-C3	2.76	119.39	116.28

Continued on next page...

Continued from previous page...

Mol	Chain	Res	Type	Atoms	Z	Observed(°)	Ideal(°)
2	X	351	CCK	C19-C18-C17	-2.39	101.16	104.82
2	X	351	CCK	C37-C38-C17	-2.36	118.03	121.70
2	X	351	CCK	N4-C3-N13	2.24	117.89	114.51

There are no chirality outliers.

There are no torsion outliers.

There are no ring outliers.

5.7 Other polymers ⓘ

There are no such residues in this entry.

5.8 Polymer linkage issues

There are no chain breaks in this entry.

6 Fit of model and data

6.1 Protein, DNA and RNA chains

In the following table, the column labelled ‘#RSRZ> 2’ contains the number (and percentage) of RSRZ outliers, followed by percent RSRZ outliers for the chain as percentile scores relative to all X-ray entries and entries of similar resolution. The OWAB column contains the minimum, median, 95th percentile and maximum values of the occupancy-weighted average B-factor per residue. The column labelled ‘Q< 0.9’ lists the number of (and percentage) of residues with an average occupancy less than 0.9.

Mol	Chain	Analysed	<RSRZ>	#RSRZ>2	OWAB(Å ²)	Q<0.9
1	X	334/339 (98%)	-0.39	0 100 100	1, 6, 26, 74	0

There are no RSRZ outliers to report.

6.2 Non-standard residues in protein, DNA, RNA chains

There are no non-standard protein/DNA/RNA residues in this entry.

6.3 Carbohydrates

There are no carbohydrates in this entry.

6.4 Ligands

In the following table, the Atoms column lists the number of modelled atoms in the group and the number defined in the chemical component dictionary. LLDF column lists the quality of electron density of the group with respect to its neighbouring residues in protein, DNA or RNA chains. The B-factors column lists the minimum, median, 95th percentile and maximum values of B factors of atoms in the group. The column labelled ‘Q< 0.9’ lists the number of atoms with occupancy less than 0.9.

Mol	Type	Chain	Res	Atoms	RSR	LLDF	B-factors(Å ²)	Q<0.9
2	CCK	X	351	28/28	0.24	1.64	11,25,29,29	0

6.5 Other polymers

There are no such residues in this entry.