



# Full wwPDB X-ray Structure Validation Report

Feb 28, 2014 – 11:20 PM GMT

PDB ID : 3E4A  
Title : Human IDE-inhibitor complex at 2.6 angstrom resolution  
Authors : Malito, E.; Leissring, M.A.; Choi, S.; Cuny, G.D.; Tang, W.J.  
Deposited on : 2008-08-11  
Resolution : 2.60 Å(reported)

This is a full wwPDB validation report for a publicly released PDB entry.  
We welcome your comments at [validation@mail.wwpdb.org](mailto:validation@mail.wwpdb.org)  
A user guide is available at <http://wwpdb.org/ValidationPDFNotes.html>

---

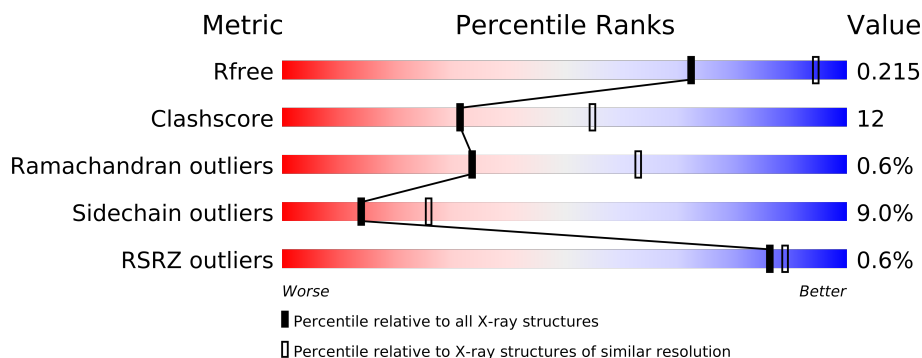
The following versions of software and data (see [references](#)) were used in the production of this report:

MolProbity : 4.02b-467  
Mogul : 1.15 2013  
Xtriage (Phenix) : dev-1323  
EDS : stable22639  
Percentile statistics : 21963  
Refmac : 5.8.0049  
CCP4 : 6.3.0 (Settle)  
Ideal geometry (proteins) : Engh & Huber (2001)  
Ideal geometry (DNA, RNA) : Parkinson et. al. (1996)  
Validation Pipeline (wwPDB-VP) : stable22683

# 1 Overall quality at a glance

The reported resolution of this entry is 2.60 Å.

Percentile scores (ranging between 0-100) for global validation metrics of the entry are shown in the following graphic. The table shows the number of entries on which the scores are based.



Metric	Whole archive (#Entries)	Similar resolution (#Entries, resolution range(Å))
$R_{free}$	66092	1718 (2.60-2.60)
Clashscore	79885	2154 (2.60-2.60)
Ramachandran outliers	78287	2113 (2.60-2.60)
Sidechain outliers	78261	2113 (2.60-2.60)
RSRZ outliers	66119	1718 (2.60-2.60)

The table below summarises the geometric issues observed across the polymeric chains and their fit to the electron density. The red, orange, yellow and green segments on the lower bar indicate the fraction of residues that contain outliers for  $\geq 3$ , 2, 1 and 0 types of geometric quality criteria. The upper red bar (where present) indicates the fraction of residues that have poor fit to the electron density.

Mol	Chain	Length	Quality of chain
1	A	1019	
1	B	1019	
2	F	3	
2	G	3	

The following table lists non-polymeric compounds that are outliers for geometric or electron-density-fit criteria:

Mol	Type	Chain	Res	Geometry	Electron density
4	QIX	A	2001	-	X
4	QIX	B	2001	-	X
5	DIO	A	2003	-	X
5	DIO	B	2002	-	X

*Continued on next page...*

*Continued from previous page...*

Mol	Type	Chain	Res	Geometry	Electron density
5	DIO	B	2003	-	X
5	DIO	B	2004	-	X
5	DIO	B	2005	-	X
5	DIO	B	2006	-	X
6	ACY	A	2010	-	X

## 2 Entry composition

There are 7 unique types of molecules in this entry. The entry contains 16294 atoms, of which 0 are hydrogen and 0 are deuterium.

In the tables below, the ZeroOcc column contains the number of atoms modelled with zero occupancy, the AltConf column contains the number of residues with at least one atom in alternate conformation and the Trace column contains the number of residues modelled with at most 2 atoms.

- Molecule 1 is a protein called Insulin-degrading enzyme.

Mol	Chain	Residues	Atoms					ZeroOcc	AltConf	Trace
1	A	961	Total	C	N	O	S	0	1	0
			7857	5058	1323	1454	22			
1	B	961	Total	C	N	O	S	0	1	0
			7857	5058	1323	1454	22			

There are 40 discrepancies between the modelled and reference sequences:

Chain	Residue	Modelled	Actual	Comment	Reference
A	78	ILE	MET	ENGINEERED	UNP P14735
A	110	LEU	CYS	ENGINEERED	UNP P14735
A	111	GLN	GLU	ENGINEERED	UNP P14735
A	171	SER	CYS	ENGINEERED	UNP P14735
A	178	ALA	CYS	ENGINEERED	UNP P14735
A	257	VAL	CYS	ENGINEERED	UNP P14735
A	414	LEU	CYS	ENGINEERED	UNP P14735
A	555	ALA	VAL	ENGINEERED	UNP P14735
A	567	PHE	LYS	ENGINEERED	UNP P14735
A	568	PHE	LYS	ENGINEERED	UNP P14735
A	569	LEU	LYS	ENGINEERED	UNP P14735
A	573	ASN	CYS	ENGINEERED	UNP P14735
A	590	SER	CYS	ENGINEERED	UNP P14735
A	789	SER	CYS	ENGINEERED	UNP P14735
A	812	ALA	CYS	ENGINEERED	UNP P14735
A	819	ALA	CYS	ENGINEERED	UNP P14735
A	845	GLY	SER	ENGINEERED	UNP P14735
A	904	SER	CYS	ENGINEERED	UNP P14735
A	966	ASN	CYS	ENGINEERED	UNP P14735
A	974	ALA	CYS	ENGINEERED	UNP P14735
B	78	ILE	MET	ENGINEERED	UNP P14735
B	110	LEU	CYS	ENGINEERED	UNP P14735
B	111	GLN	GLU	ENGINEERED	UNP P14735
B	171	SER	CYS	ENGINEERED	UNP P14735
B	178	ALA	CYS	ENGINEERED	UNP P14735

*Continued on next page...*

*Continued from previous page...*

Chain	Residue	Modelled	Actual	Comment	Reference
B	257	VAL	CYS	ENGINEERED	UNP P14735
B	414	LEU	CYS	ENGINEERED	UNP P14735
B	555	ALA	VAL	ENGINEERED	UNP P14735
B	567	PHE	LYS	ENGINEERED	UNP P14735
B	568	PHE	LYS	ENGINEERED	UNP P14735
B	569	LEU	LYS	ENGINEERED	UNP P14735
B	573	ASN	CYS	ENGINEERED	UNP P14735
B	590	SER	CYS	ENGINEERED	UNP P14735
B	789	SER	CYS	ENGINEERED	UNP P14735
B	812	ALA	CYS	ENGINEERED	UNP P14735
B	819	ALA	CYS	ENGINEERED	UNP P14735
B	845	GLY	SER	ENGINEERED	UNP P14735
B	904	SER	CYS	ENGINEERED	UNP P14735
B	966	ASN	CYS	ENGINEERED	UNP P14735
B	974	ALA	CYS	ENGINEERED	UNP P14735

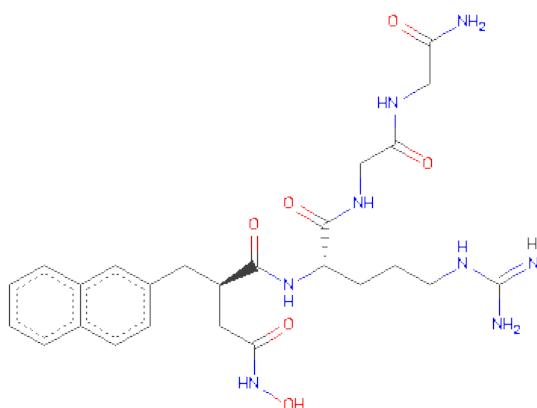
- Molecule 2 is a protein called HYDROXAMATE PEPTIDE III1.

Mol	Chain	Residues	Atoms				ZeroOcc	AltConf	Trace
2	F	3	Total	C	N	O	0	0	0
			15	9	3	3			
2	G	3	Total	C	N	O	0	0	0
			15	9	3	3			

- Molecule 3 is ZINC ION (three-letter code: ZN) (formula: Zn).

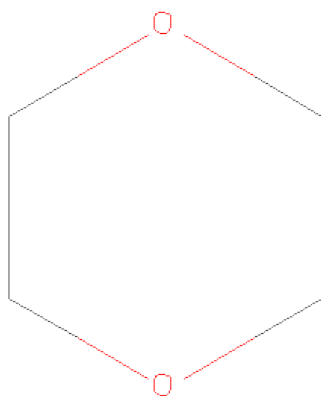
Mol	Chain	Residues	Atoms		ZeroOcc	AltConf
3	B	1	Total	Zn	0	0
			1	1		
3	A	1	Total	Zn	0	0
			1	1		

- Molecule 4 is N 2 -[(2R)-4-(HYDROXYAMINO)-2-(2-NAPHTHYLMETHYL)-4-OXO BUTANOYL]-L-ARGINYLGLYCYLGLYCINAMIDE (three-letter code: QIX) (formula: C<sub>25</sub>H<sub>34</sub>N<sub>8</sub>O<sub>6</sub>).



Mol	Chain	Residues	Atoms				ZeroOcc	AltConf
4	A	1	Total	C	N	O	0	0
			39	25	8	6		
4	B	1	Total	C	N	O	0	0
			39	25	8	6		

- Molecule 5 is 1,4-DIETHYLENE DIOXIDE (three-letter code: DIO) (formula: C<sub>4</sub>H<sub>8</sub>O<sub>2</sub>).



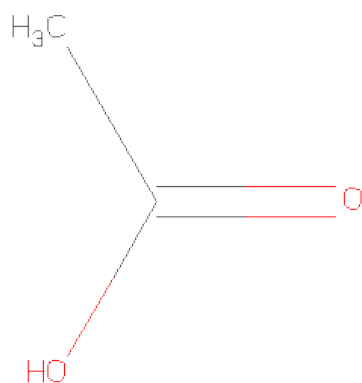
Mol	Chain	Residues	Atoms			ZeroOcc	AltConf
5	A	1	Total	C	O	0	0
			6	4	2		
5	A	1	Total	C	O	0	0
			6	4	2		

*Continued on next page...*

*Continued from previous page...*

Mol	Chain	Residues	Atoms			ZeroOcc	AltConf
5	B	1	Total	C	O	0	0
			6	4	2		
5	B	1	Total	C	O	0	0
			6	4	2		
5	B	1	Total	C	O	0	0
			6	4	2		
5	B	1	Total	C	O	0	0
			6	4	2		
5	B	1	Total	C	O	0	0
			6	4	2		

- Molecule 6 is ACETIC ACID (three-letter code: ACY) (formula: C<sub>2</sub>H<sub>4</sub>O<sub>2</sub>).



Mol	Chain	Residues	Atoms			ZeroOcc	AltConf
6	A	1	Total	C	O	0	0
			4	2	2		
6	A	1	Total	C	O	0	0
			4	2	2		
6	A	1	Total	C	O	0	0
			4	2	2		
6	A	1	Total	C	O	0	0
			4	2	2		
6	A	1	Total	C	O	0	0
			4	2	2		
6	A	1	Total	C	O	0	0
			4	2	2		

*Continued on next page...*

*Continued from previous page...*

Mol	Chain	Residues	Atoms	ZeroOcc	AltConf
6	A	1	Total C O 4 2 2	0	0
6	A	1	Total C O 4 2 2	0	0
6	B	1	Total C O 4 2 2	0	0
6	B	1	Total C O 4 2 2	0	0
6	B	1	Total C O 4 2 2	0	0
6	B	1	Total C O 4 2 2	0	0
6	B	1	Total C O 4 2 2	0	0
6	B	1	Total C O 4 2 2	0	0

- Molecule 7 is water.

Mol	Chain	Residues	Atoms	ZeroOcc	AltConf
7	A	214	Total O 214 214	0	0
7	B	158	Total O 158 158	0	0

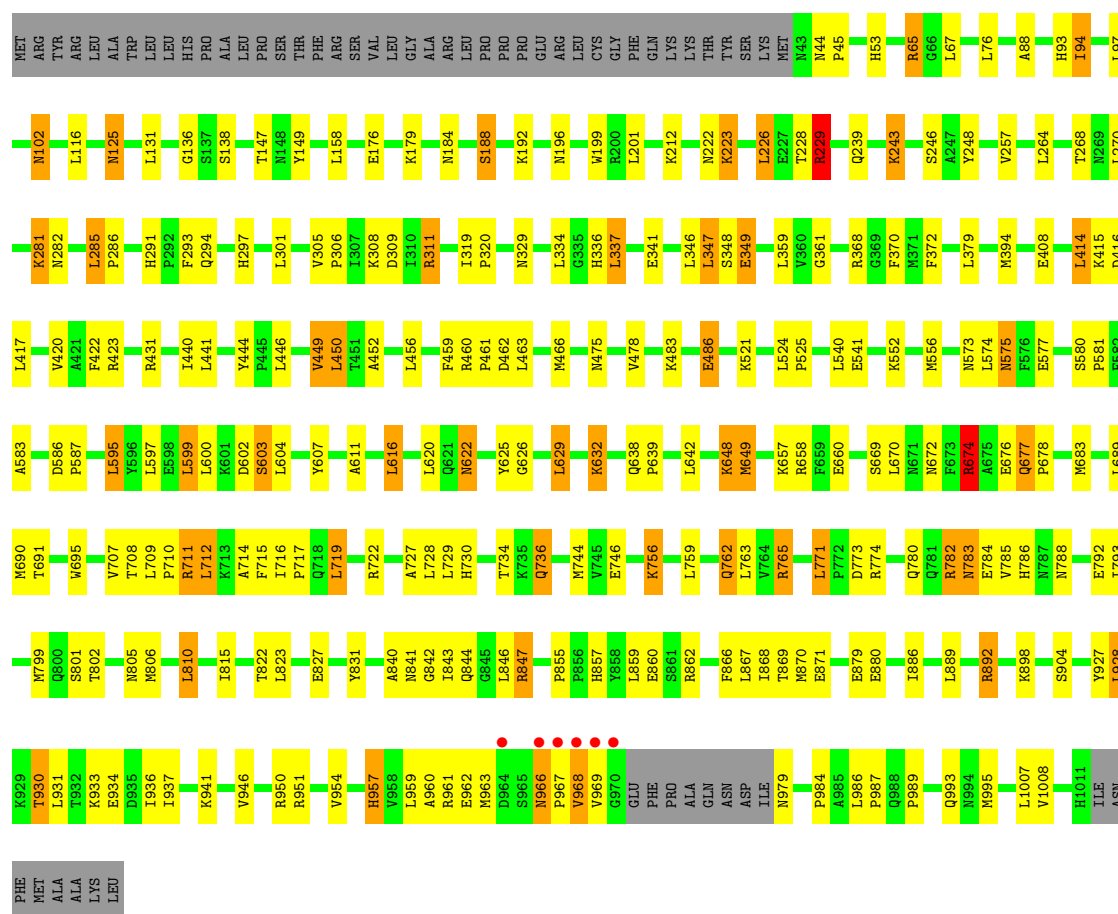


### 3 Residue-property plots

These plots are drawn for all protein, RNA and DNA chains in the entry. The first graphic for a chain summarises the proportions of errors displayed in the second graphic. The second graphic shows the sequence view annotated by issues in geometry and electron density. Residues are color-coded according to the number of geometric quality criteria for which they contain at least one outlier: green = 0, yellow = 1, orange = 2 and red = 3 or more. A red dot above a residue indicates a poor fit to the electron density ( $RSRZ > 2$ ). Stretches of 2 or more consecutive residues without any outlier are shown as a green connector. Residues present in the sample, but not in the model, are shown in grey.

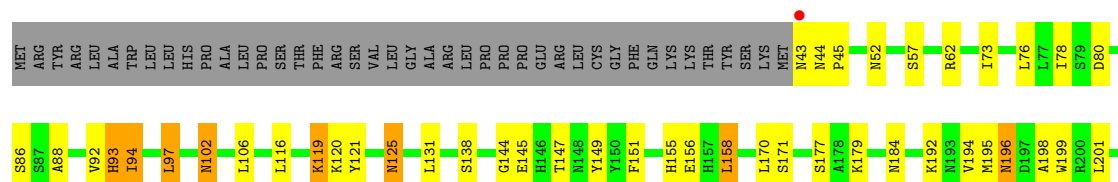
- Molecule 1: Insulin-degrading enzyme

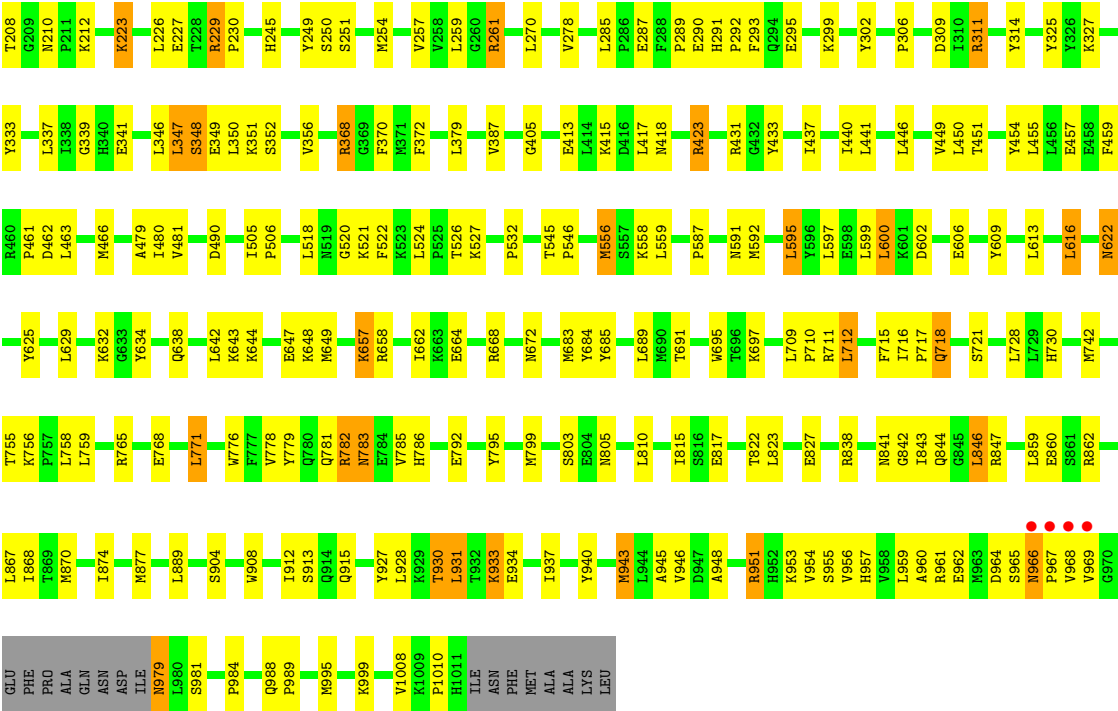
Chain A: 



- Molecule 1: Insulin-degrading enzyme

Chain B: 






● Molecule 2: HYDROXAMATE PEPTIDE II1

Chain F: 



● Molecule 2: HYDROXAMATE PEPTIDE II1

Chain G: 



## 4 Data and refinement statistics

Property	Value	Source
Space group	P 65	Depositor
Cell constants a, b, c, $\alpha$ , $\beta$ , $\gamma$	261.40Å 261.40Å 92.05Å 90.00° 90.00° 120.00°	Depositor
Resolution (Å)	45.28 – 2.60 45.28 – 2.60	Depositor EDS
% Data completeness (in resolution range)	97.2 (45.28-2.60) 97.3 (45.28-2.60)	Depositor EDS
$R_{merge}$	(Not available)	Depositor
$R_{sym}$	0.09	Depositor
$\langle I/\sigma(I) \rangle$ <sup>1</sup>	3.54 (at 2.61Å)	Xtriage
Refinement program	PHENIX	Depositor
R, $R_{free}$	0.167 , 0.225 0.159 , 0.215	Depositor DCC
$R_{free}$ test set	5410 reflections (5.06%)	DCC
Wilson B-factor (Å <sup>2</sup> )	39.6	Xtriage
Anisotropy	0.314	Xtriage
Bulk solvent $k_{sol}$ (e/Å <sup>3</sup> ), $B_{sol}$ (Å <sup>2</sup> )	0.35 , 24.5	EDS
Estimated twinning fraction	0.019 for h,-h-k,-l	Xtriage
L-test for twinning	$\langle  L  \rangle = 0.49$ , $\langle L^2 \rangle = 0.33$	Xtriage
Outliers	0 of 106934 reflections	Xtriage
$F_o, F_c$ correlation	0.96	EDS
Total number of atoms	16294	wwPDB-VP
Average B, all atoms (Å <sup>2</sup> )	38.0	wwPDB-VP

Xtriage's analysis on translational NCS is as follows: *The largest off-origin peak in the Patterson function is 1.82% of the height of the origin peak. No significant pseudotranslation is detected.*

<sup>1</sup>Intensities estimated from amplitudes.

## 5 Model quality i

### 5.1 Standard geometry i

Bond lengths and bond angles in the following residue types are not validated in this section: ZN, DIO, ACY, QIX

The Z score for a bond length (or angle) is the number of standard deviations the observed value is removed from the expected value. A bond length (or angle) with  $|Z| > 5$  is considered an outlier worth inspection. RMSZ is the root-mean-square of all Z scores of the bond lengths (or angles).

Mol	Chain	Bond lengths		Bond angles	
		RMSZ	# Z  >5	RMSZ	# Z  >5
1	A	0.98	5/8053 (0.1%)	0.98	13/10896 (0.1%)
1	B	0.92	0/8053	0.93	11/10896 (0.1%)
2	F	2.44	1/14 (7.1%)	1.87	0/18
2	G	2.42	1/14 (7.1%)	1.93	0/18
All	All	0.96	7/16134 (0.0%)	0.96	24/21828 (0.1%)

All (7) bond length outliers are listed below:

Mol	Chain	Res	Type	Atoms	Z	Observed(Å)	Ideal(Å)
1	A	660	GLU	CG-CD	7.27	1.62	1.51
2	F	1	ALA	CA-CB	6.52	1.66	1.52
1	A	871	GLU	CG-CD	6.00	1.60	1.51
1	A	349	GLU	CG-CD	5.49	1.60	1.51
1	A	676	GLU	CG-CD	5.41	1.60	1.51
1	A	966	ASN	CB-CG	5.27	1.63	1.51
2	G	1	ALA	CA-CB	5.07	1.63	1.52

All (24) bond angle outliers are listed below:

Mol	Chain	Res	Type	Atoms	Z	Observed(°)	Ideal(°)
1	A	94	ILE	CG1-CB-CG2	-6.73	96.60	111.40
1	A	674	ARG	NE-CZ-NH2	-6.49	117.05	120.30
1	A	414	LEU	CA-CB-CG	6.44	130.12	115.30
1	B	668	ARG	NE-CZ-NH1	6.39	123.50	120.30
1	A	892	ARG	NE-CZ-NH2	6.34	123.47	120.30
1	A	674	ARG	NE-CZ-NH1	6.33	123.47	120.30
1	A	311	ARG	NE-CZ-NH2	-5.98	117.31	120.30
1	B	668	ARG	NE-CZ-NH2	-5.87	117.36	120.30
1	B	261	ARG	NE-CZ-NH1	-5.63	117.48	120.30
1	B	92	VAL	CB-CA-C	-5.61	100.73	111.40

*Continued on next page...*

*Continued from previous page...*

Mol	Chain	Res	Type	Atoms	Z	Observed(°)	Ideal(°)
1	B	311	ARG	NE-CZ-NH2	-5.54	117.53	120.30
1	B	462	ASP	CB-CG-OD2	5.51	123.26	118.30
1	A	600	LEU	CA-CB-CG	5.49	127.93	115.30
1	A	229	ARG	CG-CD-NE	5.49	123.33	111.80
1	B	368	ARG	NE-CZ-NH2	-5.28	117.66	120.30
1	A	599	LEU	CA-CB-CG	-5.26	103.21	115.30
1	A	892	ARG	NE-CZ-NH1	-5.23	117.68	120.30
1	B	119	LYS	CD-CE-NZ	5.17	123.60	111.70
1	B	846	LEU	CA-CB-CG	5.17	127.20	115.30
1	A	847	ARG	NE-CZ-NH2	-5.17	117.71	120.30
1	B	106	LEU	CB-CG-CD2	-5.14	102.26	111.00
1	A	950	ARG	NE-CZ-NH2	-5.07	117.77	120.30
1	B	94	ILE	CG1-CB-CG2	-5.07	100.26	111.40
1	A	65	ARG	NE-CZ-NH1	-5.00	117.80	120.30

There are no chirality outliers.

There are no planarity outliers.

## 5.2 Close contacts ⓘ

In the following table, the Non-H and H(model) columns list the number of non-hydrogen atoms and hydrogen atoms in the chain respectively. The H(added) column lists the number of hydrogens added by MolProbity. The Clashes column lists the number of clashes within the asymmetric unit, and the number in parentheses is this value normalized per 1000 atoms of the molecule in the chain. The Symm-Clashes column gives symmetry related clashes, in the same way as for the Clashes column.

Mol	Chain	Non-H	H(model)	H(added)	Clashes	Symm-Clashes
1	A	7857	0	7791	186	1
1	B	7857	0	7791	180	0
2	F	15	0	17	1	0
2	G	15	0	17	2	0
3	A	1	0	0	0	0
3	B	1	0	0	0	0
4	A	39	0	32	3	0
4	B	39	0	32	4	0
5	A	12	0	16	12	0
5	B	30	0	40	3	0
6	A	32	0	32	0	0
6	B	24	0	24	2	0
7	A	214	0	0	7	0

*Continued on next page...*

*Continued from previous page...*

Mol	Chain	Non-H	H(model)	H(added)	Clashes	Symm-Clashes
7	B	158	0	0	7	0
All	All	16294	0	15792	369	1

Clashscore is defined as the number of clashes calculated for the entry per 1000 atoms (including hydrogens) of the entry. The overall clashscore for this entry is 12.

All (369) close contacts within the same asymmetric unit are listed below.

Atom-1	Atom-2	Distance(Å)	Clash(Å)
1:A:782:ARG:HG2	1:A:782:ARG:HH11	1.10	1.09
1:B:782:ARG:CG	1:B:782:ARG:HH11	1.67	1.05
1:B:116:LEU:HD21	4:B:2001:QIX:H25	1.26	1.05
1:A:782:ARG:HG2	1:A:782:ARG:NH1	1.67	1.01
1:B:841:ASN:H	5:B:2003:DIO:H11	1.28	0.99
1:B:782:ARG:HG2	1:B:782:ARG:HH11	0.87	0.99
1:B:817:GLU:HG2	7:B:2164:HOH:O	1.61	0.99
1:B:102:ASN:H	1:B:102:ASN:HD22	1.08	0.95
1:B:125:ASN:H	1:B:125:ASN:HD22	1.12	0.95
1:B:782:ARG:NH1	1:B:782:ARG:HG2	1.69	0.95
1:A:842:GLY:H	5:A:2003:DIO:H2'2	1.35	0.92
1:A:771:LEU:HD21	1:A:954:VAL:CG2	2.04	0.88
1:B:805:ASN:HD22	1:B:844:GLN:HE22	1.22	0.86
1:A:196:ASN:HD22	1:A:199:TRP:H	1.24	0.85
1:B:339:GLY:O	2:G:3:ALA:HB2	1.76	0.85
1:A:341:GLU:HG2	1:A:347:LEU:HD12	1.59	0.84
1:A:827:GLU:OE1	1:A:862:ARG:HD3	1.78	0.84
1:B:771:LEU:HD21	1:B:954:VAL:HG23	1.60	0.83
1:A:116:LEU:HD21	4:A:2001:QIX:H25	1.59	0.83
1:A:782:ARG:HH11	1:A:782:ARG:CG	1.87	0.82
5:A:2002:DIO:O1	5:A:2003:DIO:H1'2	1.80	0.82
1:B:957:HIS:HD2	1:B:966:ASN:HD21	1.29	0.81
1:B:622:ASN:H	1:B:622:ASN:HD22	1.25	0.81
1:A:622:ASN:H	1:A:622:ASN:HD22	1.24	0.80
1:B:782:ARG:NH1	1:B:782:ARG:CG	2.35	0.80
1:A:840:ALA:C	5:A:2003:DIO:H2'1	2.02	0.80
1:A:475:ASN:HB3	7:A:2218:HOH:O	1.82	0.79
1:A:780:GLN:OE1	1:A:966:ASN:HB3	1.82	0.79
1:B:783:ASN:HD22	1:B:785:VAL:H	1.31	0.78
1:B:116:LEU:CD2	4:B:2001:QIX:H25	2.13	0.78
1:B:776:TRP:CD1	1:B:953:LYS:HG2	2.18	0.78
1:B:957:HIS:HD2	1:B:966:ASN:ND2	1.83	0.77
1:B:289:PRO:HD2	7:B:2033:HOH:O	1.88	0.74
1:A:674:ARG:HD2	1:A:784:GLU:OE2	1.86	0.74

*Continued on next page...*

*Continued from previous page...*

Atom-1	Atom-2	Distance(Å)	Clash(Å)
1:A:184:ASN:HD21	1:A:223:LYS:NZ	1.86	0.73
1:B:441:LEU:HD23	1:B:449:VAL:HG11	1.71	0.73
1:A:957:HIS:HD2	1:A:966:ASN:HD21	1.35	0.72
1:A:880:GLU:HB3	1:B:457:GLU:HG2	1.70	0.72
1:B:657:LYS:HA	1:B:657:LYS:HE3	1.72	0.72
1:B:102:ASN:N	1:B:102:ASN:HD22	1.87	0.72
1:A:711:ARG:HH21	1:A:711:ARG:CG	2.03	0.72
1:B:730:HIS:HD2	1:B:904:SER:OG	1.73	0.71
1:B:783:ASN:ND2	1:B:785:VAL:H	1.88	0.71
1:A:759:LEU:HB2	1:A:762:GLN:HG3	1.72	0.71
1:B:805:ASN:ND2	1:B:844:GLN:HE22	1.88	0.71
1:B:62:ARG:HG2	1:B:80:ASP:HB2	1.71	0.71
1:A:840:ALA:CA	5:A:2003:DIO:H2'1	2.21	0.70
1:A:188:SER:HB3	1:A:831:TYR:HB2	1.74	0.69
1:A:94:ILE:HG13	1:A:248:TYR:HB3	1.73	0.69
1:A:840:ALA:HA	5:A:2003:DIO:C2	2.23	0.69
1:B:961:ARG:NH1	1:B:962:GLU:OE1	2.26	0.69
1:A:196:ASN:ND2	1:A:199:TRP:H	1.91	0.69
1:A:574:LEU:HD22	1:A:729:LEU:HD22	1.73	0.68
1:A:483:LYS:O	1:A:486:GLU:HB2	1.92	0.68
1:A:771:LEU:HD21	1:A:954:VAL:HG23	1.76	0.68
1:A:622:ASN:H	1:A:622:ASN:ND2	1.91	0.68
1:A:711:ARG:HG2	1:A:711:ARG:HH21	1.57	0.68
1:B:927:TYR:O	1:B:930:THR:HB	1.95	0.67
1:B:957:HIS:CD2	1:B:966:ASN:HD21	2.13	0.67
1:A:880:GLU:CB	1:B:457:GLU:HG2	2.26	0.65
1:A:736:GLN:H	1:A:736:GLN:NE2	1.94	0.65
1:A:229:ARG:HG2	1:A:229:ARG:HH11	1.60	0.65
1:B:908:TRP:O	1:B:912:ILE:HG12	1.95	0.65
1:B:841:ASN:N	5:B:2003:DIO:H11	2.06	0.65
1:B:771:LEU:HD21	1:B:954:VAL:CG2	2.26	0.65
1:B:964:ASP:O	1:B:966:ASN:N	2.23	0.64
1:B:116:LEU:HD21	4:B:2001:QIX:C25	2.18	0.64
1:A:969:VAL:CG2	1:A:989:PRO:HD3	2.28	0.64
1:B:102:ASN:H	1:B:102:ASN:ND2	1.89	0.64
1:B:969:VAL:HG21	1:B:989:PRO:HD3	1.80	0.64
1:A:602:ASP:OD1	1:A:658:ARG:HD3	1.98	0.64
1:B:423:ARG:CG	1:B:423:ARG:HH11	2.12	0.63
1:A:782:ARG:CG	1:A:782:ARG:NH1	2.47	0.62
1:A:799:MET:HE3	1:A:1008:VAL:HG22	1.81	0.62
1:A:294:GLN:H	1:A:297:HIS:HD2	1.48	0.62
1:A:603:SER:OG	1:A:648:LYS:HE2	2.00	0.62

*Continued on next page...*

*Continued from previous page...*

Atom-1	Atom-2	Distance(Å)	Clash(Å)
1:A:459:PHE:CE2	1:A:461:PRO:HD3	2.35	0.62
1:A:969:VAL:HG21	1:A:989:PRO:HD3	1.82	0.61
1:A:125:ASN:HD22	1:A:125:ASN:H	1.46	0.61
1:B:125:ASN:H	1:B:125:ASN:ND2	1.92	0.61
1:A:176:GLU:OE1	1:A:179:LYS:HE2	2.01	0.61
1:B:311:ARG:NH2	1:B:664:GLU:OE2	2.33	0.61
1:A:147:THR:HG22	1:A:149:TYR:CE1	2.36	0.61
1:A:229:ARG:CG	1:A:229:ARG:HH11	2.13	0.60
1:A:842:GLY:H	5:A:2003:DIO:C2'	2.09	0.60
1:B:768:GLU:HB3	1:B:843:ILE:HG13	1.83	0.60
1:A:449:VAL:HG23	1:A:450:LEU:HD13	1.84	0.59
1:B:643:LYS:HD3	1:B:647:GLU:OE2	2.02	0.59
1:B:600:LEU:HD11	1:B:649:MET:HB2	1.82	0.59
1:A:815:ILE:HA	1:A:870:MET:HE2	1.84	0.59
1:A:184:ASN:HD21	1:A:223:LYS:HZ3	1.47	0.59
1:B:309:ASP:H	1:B:672:ASN:HD21	1.49	0.59
1:B:348:SER:OG	1:B:606:GLU:OE2	2.19	0.59
1:B:309:ASP:H	1:B:672:ASN:ND2	2.01	0.58
1:A:868:ILE:HD12	1:A:984:PRO:HD3	1.85	0.58
1:A:319:ILE:HB	1:A:320:PRO:HD2	1.85	0.58
1:A:441:LEU:HD23	1:A:449:VAL:HG11	1.85	0.58
1:A:959:LEU:HD21	1:A:966:ASN:HB2	1.86	0.58
1:A:309:ASP:H	1:A:672:ASN:HD21	1.51	0.58
1:B:600:LEU:HD21	1:B:648:LYS:HB3	1.84	0.58
1:A:711:ARG:HG2	1:A:711:ARG:NH2	2.17	0.58
1:A:783:ASN:ND2	1:A:786:HIS:H	2.01	0.57
1:A:709:LEU:HB3	1:A:710:PRO:HD3	1.85	0.57
1:A:586:ASP:HB2	1:A:587:PRO:HD2	1.85	0.57
1:B:622:ASN:H	1:B:622:ASN:ND2	2.00	0.57
1:A:927:TYR:O	1:A:930:THR:HB	2.05	0.56
1:A:847:ARG:NH1	7:A:2021:HOH:O	2.36	0.56
1:B:822:THR:O	1:B:827:GLU:HG3	2.05	0.56
1:A:734:THR:HB	1:A:736:GLN:HE21	1.70	0.56
1:B:783:ASN:ND2	1:B:786:HIS:H	2.05	0.55
1:A:541:GLU:OE2	1:A:736:GLN:NE2	2.39	0.55
1:A:552:LYS:NZ	1:A:746:GLU:OE1	2.38	0.55
1:B:979:ASN:N	1:B:979:ASN:OD1	2.38	0.55
1:A:690:MET:CE	1:A:954:VAL:HG21	2.36	0.55
1:B:327:LYS:HB2	7:B:2114:HOH:O	2.05	0.55
1:A:783:ASN:ND2	1:A:785:VAL:H	2.03	0.55
1:A:285:LEU:HD23	1:A:286:PRO:HD2	1.88	0.55
1:B:827:GLU:OE1	1:B:862:ARG:HD3	2.06	0.55

*Continued on next page...*



*Continued from previous page...*

Atom-1	Atom-2	Distance(Å)	Clash(Å)
1:B:227:GLU:C	1:B:230:PRO:HD2	2.27	0.55
1:B:349:GLU:OE1	1:B:521:LYS:HD3	2.06	0.55
1:A:361:GLY:O	2:F:1:ALA:O	2.23	0.55
1:A:857:HIS:HD2	7:A:2057:HOH:O	1.90	0.55
1:A:573:ASN:ND2	1:A:632:LYS:CB	2.69	0.55
1:A:573:ASN:ND2	1:A:632:LYS:HB2	2.22	0.55
1:A:625:TYR:CZ	1:A:765:ARG:HD2	2.42	0.55
1:B:795:TYR:CE2	1:B:953:LYS:HD2	2.42	0.54
1:B:251:SER:HB3	1:B:278:VAL:HG12	1.89	0.54
1:A:840:ALA:HA	5:A:2003:DIO:H21	1.89	0.54
1:B:691:THR:O	1:B:999:LYS:CE	2.55	0.54
1:B:709:LEU:HB3	1:B:710:PRO:HD3	1.89	0.54
4:B:2001:QIX:N01	7:B:2164:HOH:O	2.33	0.54
1:A:359:LEU:HD23	1:A:359:LEU:C	2.27	0.54
1:B:93:HIS:HD2	1:B:145:GLU:O	1.90	0.54
1:B:959:LEU:HD21	1:B:966:ASN:HB2	1.90	0.54
1:B:776:TRP:H	6:B:2007:ACY:H1	1.73	0.54
1:B:622:ASN:HD22	1:B:622:ASN:N	2.00	0.54
1:B:194:VAL:HG12	1:B:195:MET:HG2	1.90	0.54
1:A:759:LEU:HB2	1:A:762:GLN:CG	2.36	0.54
1:A:730:HIS:HD2	1:A:904:SER:OG	1.91	0.53
1:A:586:ASP:HB2	1:A:587:PRO:CD	2.38	0.53
1:B:689:LEU:HD23	1:B:995:MET:HG2	1.90	0.53
5:A:2002:DIO:O1	5:A:2003:DIO:C1'	2.54	0.53
1:B:196:ASN:HD22	1:B:196:ASN:C	2.11	0.53
1:B:346:LEU:HA	1:B:522:PHE:CE2	2.44	0.53
1:B:691:THR:O	1:B:999:LYS:HE3	2.09	0.53
1:B:196:ASN:ND2	1:B:196:ASN:C	2.62	0.53
1:B:715:PHE:O	1:B:718:GLN:HB3	2.10	0.52
1:B:803:SER:HB2	1:B:927:TYR:OH	2.09	0.52
1:A:736:GLN:H	1:A:736:GLN:CD	2.12	0.52
1:A:102:ASN:HD22	1:A:102:ASN:H	1.58	0.52
1:A:136:GLY:O	1:A:892:ARG:NH1	2.42	0.52
1:A:573:ASN:HD22	1:A:632:LYS:CB	2.23	0.52
1:A:459:PHE:CD2	1:A:461:PRO:HD3	2.45	0.52
1:A:759:LEU:HD23	1:A:762:GLN:OE1	2.10	0.51
1:A:116:LEU:CD2	4:A:2001:QIX:H25	2.36	0.51
1:B:93:HIS:HE1	1:B:368:ARG:HH21	1.58	0.51
1:A:722:ARG:HA	1:A:756:LYS:O	2.11	0.51
1:B:155:HIS:ND1	1:B:261:ARG:HD2	2.26	0.51
1:B:119:LYS:HD2	1:B:171:SER:HB3	1.91	0.51
1:B:556:MET:O	1:B:556:MET:HG3	2.10	0.51

*Continued on next page...*

*Continued from previous page...*

Atom-1	Atom-2	Distance(Å)	Clash(Å)
1:A:708:THR:OG1	1:A:711:ARG:HD3	2.11	0.50
1:B:311:ARG:HB3	1:B:379:LEU:HB2	1.92	0.50
1:A:67:LEU:C	1:A:67:LEU:HD12	2.32	0.50
1:A:841:ASN:N	5:A:2003:DIO:C2'	2.74	0.50
1:A:556:MET:HG3	1:A:556:MET:O	2.11	0.50
1:B:685:TYR:CZ	1:B:781:GLN:HG3	2.46	0.50
1:A:967:PRO:O	1:A:969:VAL:O	2.29	0.50
1:A:573:ASN:HD22	1:A:632:LYS:HB3	1.76	0.50
1:B:311:ARG:HH22	1:B:664:GLU:CD	2.14	0.50
1:B:97:LEU:HB2	1:B:144:GLY:O	2.12	0.50
1:B:293:PHE:CE2	1:B:372:PHE:HE2	2.30	0.49
1:B:559:LEU:HD22	1:B:742:MET:HB2	1.93	0.49
1:A:855:PRO:HA	1:A:963:MET:HE1	1.93	0.49
1:A:336:HIS:HD2	1:A:337:LEU:HD13	1.76	0.49
1:A:822:THR:O	1:A:827:GLU:HG3	2.12	0.49
1:B:88:ALA:HB3	1:B:151:PHE:CE2	2.47	0.49
1:B:350:LEU:HB3	1:B:356:VAL:HG22	1.95	0.49
1:A:714:ALA:O	1:A:717:PRO:HD2	2.13	0.49
1:A:297:HIS:HE1	7:A:2099:HOH:O	1.94	0.49
1:B:306:PRO:HG3	1:B:481:VAL:HG12	1.94	0.49
1:A:886:ILE:HG23	1:A:928:LEU:HD13	1.94	0.49
1:A:184:ASN:HD21	1:A:223:LYS:HZ1	1.58	0.48
1:B:291:HIS:ND1	1:B:292:PRO:HD2	2.28	0.48
1:A:957:HIS:CD2	1:A:966:ASN:HD21	2.23	0.48
1:A:805:ASN:HD22	1:A:844:GLN:HE22	1.61	0.48
1:B:940:TYR:CE1	1:B:945:ALA:HB2	2.48	0.48
1:A:933:LYS:O	1:A:937:ILE:HG12	2.13	0.48
1:B:196:ASN:HD21	1:B:198:ALA:HB3	1.79	0.48
1:B:616:LEU:HD21	1:B:638:GLN:HG2	1.95	0.48
1:A:293:PHE:CE2	1:A:372:PHE:HE2	2.32	0.48
1:B:599:LEU:HD23	1:B:662:ILE:HD12	1.96	0.48
1:B:868:ILE:CD1	1:B:984:PRO:HG3	2.44	0.48
1:A:65:ARG:HB2	1:A:264:LEU:HD13	1.95	0.48
1:A:711:ARG:CG	1:A:711:ARG:NH2	2.71	0.47
1:B:689:LEU:CD2	1:B:995:MET:HG2	2.43	0.47
1:B:418:ASN:HB3	1:B:454:TYR:O	2.13	0.47
1:A:799:MET:HG2	1:A:843:ILE:CD1	2.44	0.47
1:B:119:LYS:CD	1:B:171:SER:HB3	2.44	0.47
1:A:291:HIS:CD2	1:A:370:PHE:HB2	2.48	0.47
1:B:349:GLU:CD	1:B:521:LYS:HD3	2.33	0.47
1:B:643:LYS:O	1:B:643:LYS:HG2	2.14	0.47
1:A:801:SER:O	1:A:802:THR:C	2.52	0.47

*Continued on next page...*

*Continued from previous page...*

Atom-1	Atom-2	Distance(Å)	Clash(Å)
1:B:433:TYR:CE1	1:B:437:ILE:HD11	2.50	0.47
1:A:690:MET:HE3	1:A:954:VAL:HG11	1.96	0.47
1:B:625:TYR:CZ	1:B:765:ARG:HD2	2.49	0.47
1:B:295:GLU:OE2	1:B:295:GLU:HA	2.14	0.47
1:A:683:MET:HA	1:A:792:GLU:OE2	2.14	0.47
1:B:351:LYS:HE2	7:B:2105:HOH:O	2.14	0.47
1:A:783:ASN:HD22	1:A:785:VAL:H	1.62	0.47
1:A:573:ASN:ND2	1:A:632:LYS:HB3	2.29	0.47
1:B:602:ASP:OD1	1:B:658:ARG:CD	2.63	0.47
1:A:301:LEU:HA	1:A:478:VAL:O	2.15	0.47
1:B:685:TYR:HB2	1:B:956:VAL:HG11	1.96	0.47
1:B:587:PRO:HD3	1:B:695:TRP:CE2	2.49	0.47
5:A:2002:DIO:O1	5:A:2003:DIO:C1	2.63	0.47
1:A:649:MET:HB3	1:A:649:MET:HE3	1.68	0.47
1:A:88:ALA:HA	1:A:257:VAL:O	2.15	0.47
1:A:460:ARG:HD2	1:A:462:ASP:OD2	2.15	0.46
1:A:246:SER:O	1:A:281:LYS:HE2	2.15	0.46
1:A:239:GLN:O	1:A:243:LYS:HG2	2.15	0.46
1:A:309:ASP:H	1:A:672:ASN:ND2	2.13	0.46
1:A:689:LEU:CD2	1:A:995:MET:HG2	2.45	0.46
1:A:843:ILE:HG22	1:A:844:GLN:N	2.30	0.46
1:B:815:ILE:HA	1:B:870:MET:HE2	1.97	0.46
1:A:595:LEU:HD23	1:A:707:VAL:HG11	1.97	0.46
1:B:423:ARG:HG3	1:B:423:ARG:HH11	1.79	0.46
1:B:196:ASN:ND2	1:B:199:TRP:H	2.13	0.46
1:B:125:ASN:N	1:B:125:ASN:HD22	1.88	0.46
1:A:708:THR:HB	1:A:710:PRO:HD2	1.98	0.46
1:A:716:ILE:HB	1:A:717:PRO:HD3	1.98	0.46
1:B:799:MET:HE3	1:B:1008:VAL:HG22	1.98	0.46
1:B:170:LEU:HD21	1:B:278:VAL:HG22	1.98	0.46
1:B:602:ASP:OD1	1:B:658:ARG:HD2	2.16	0.46
1:B:147:THR:HG22	1:B:149:TYR:CE1	2.51	0.46
1:B:874:ILE:O	1:B:933:LYS:HD2	2.16	0.46
1:B:591:ASN:O	1:B:595:LEU:HD22	2.16	0.46
1:A:620:LEU:HD13	1:A:629:LEU:HG	1.98	0.45
1:B:776:TRP:H	6:B:2007:ACY:CH3	2.28	0.45
1:B:86:SER:HB3	1:B:259:LEU:O	2.16	0.45
1:A:880:GLU:HG2	1:B:327:LYS:HE2	1.98	0.45
1:B:730:HIS:CD2	1:B:904:SER:OG	2.62	0.45
1:B:587:PRO:HD3	1:B:695:TRP:CD2	2.52	0.45
1:B:451:THR:HB	1:B:455:LEU:HD12	1.98	0.45
1:A:866:PHE:O	1:A:869:THR:HB	2.14	0.45

*Continued on next page...*

*Continued from previous page...*

Atom-1	Atom-2	Distance(Å)	Clash(Å)
1:A:525:PRO:HD3	7:A:2169:HOH:O	2.16	0.45
1:B:413:GLU:OE2	1:B:527:LYS:HD2	2.17	0.45
1:B:291:HIS:CD2	1:B:370:PHE:HB2	2.52	0.45
1:A:868:ILE:CD1	1:A:984:PRO:HD3	2.47	0.45
1:B:779:TYR:CZ	1:B:995:MET:HE2	2.52	0.45
5:B:2002:DIO:H21	7:B:2054:HOH:O	2.17	0.45
1:B:532:PRO:HG3	1:B:634:TYR:CD2	2.52	0.45
1:B:868:ILE:HD12	1:B:984:PRO:HG3	1.99	0.45
1:B:799:MET:HB3	1:B:799:MET:HE3	1.60	0.45
1:B:943:MET:HE2	1:B:943:MET:HB3	1.72	0.45
1:B:657:LYS:CA	1:B:657:LYS:HE3	2.45	0.44
1:A:586:ASP:HA	1:A:695:TRP:CZ2	2.52	0.44
1:A:763:LEU:HA	1:A:763:LEU:HD23	1.84	0.44
1:A:961:ARG:HD2	1:A:962:GLU:OE1	2.17	0.44
1:A:460:ARG:HG3	1:A:463:LEU:HD12	1.98	0.44
1:A:603:SER:OG	1:A:648:LYS:CE	2.65	0.44
1:B:778:VAL:HA	1:B:955:SER:O	2.17	0.44
1:A:773:ASP:O	1:A:774[A]:ARG:HB2	2.17	0.44
1:A:349:GLU:OE2	1:A:349:GLU:HA	2.17	0.44
1:A:93:HIS:HE1	1:A:368:ARG:HH21	1.66	0.44
1:A:306:PRO:HB2	1:A:308:LYS:O	2.18	0.44
1:A:690:MET:HE1	1:A:954:VAL:HG21	2.00	0.44
1:B:988:GLN:HA	1:B:988:GLN:OE1	2.18	0.44
1:B:245:HIS:O	1:B:249:TYR:HB2	2.17	0.44
1:B:556:MET:HB2	1:B:556:MET:HE2	1.94	0.44
1:B:716:ILE:HB	1:B:717:PRO:HD3	2.00	0.44
1:A:53:HIS:HB2	7:A:2048:HOH:O	2.17	0.44
1:B:684:TYR:OH	1:B:697:LYS:HG2	2.18	0.44
1:B:874:ILE:HA	1:B:877:MET:HG2	2.00	0.44
1:B:913:SER:OG	1:B:915:GLN:HG3	2.17	0.44
1:A:575:ASN:O	1:A:727:ALA:HA	2.18	0.44
1:B:712:LEU:HD23	1:B:712:LEU:HA	1.82	0.44
1:A:131:LEU:CD1	1:A:138:SER:HB2	2.48	0.44
1:B:609:TYR:CE2	1:B:613:LEU:HD11	2.52	0.44
1:A:860:GLU:OE2	1:A:957:HIS:HE1	2.00	0.44
1:A:311:ARG:HB3	1:A:379:LEU:HB2	1.98	0.43
1:B:250:SER:O	1:B:254:MET:HG3	2.18	0.43
1:A:841:ASN:H	5:A:2003:DIO:H21	1.82	0.43
1:A:780:GLN:OE1	1:A:966:ASN:CB	2.60	0.43
1:A:857:HIS:CD2	7:A:2057:HOH:O	2.69	0.43
1:A:677:GLN:HB3	1:A:678:PRO:HD2	2.00	0.43
1:A:456:LEU:HD23	1:A:456:LEU:HA	1.58	0.43

*Continued on next page...*

*Continued from previous page...*

Atom-1	Atom-2	Distance(Å)	Clash(Å)
1:B:779:TYR:CE2	1:B:995:MET:CE	3.01	0.43
1:A:486:GLU:HA	1:A:486:GLU:OE2	2.17	0.43
1:B:423:ARG:CG	1:B:423:ARG:NH1	2.80	0.43
1:B:291:HIS:HA	1:B:292:PRO:HD3	1.91	0.43
1:A:611:ALA:HB1	1:A:616:LEU:HB3	2.01	0.43
1:A:957:HIS:HD2	1:A:966:ASN:ND2	2.09	0.43
1:B:842:GLY:HA3	1:B:1008:VAL:HG23	2.00	0.43
1:B:459:PHE:CE2	1:B:461:PRO:HG3	2.54	0.43
1:A:184:ASN:ND2	1:A:223:LYS:HZ3	2.16	0.43
1:A:580:SER:HA	1:A:581:PRO:HD2	1.84	0.43
1:A:604:LEU:HD23	1:A:604:LEU:HA	1.81	0.43
1:B:208:THR:HG21	1:B:302:TYR:CE2	2.54	0.43
1:B:184:ASN:ND2	1:B:223:LYS:HE2	2.34	0.43
1:A:840:ALA:N	5:A:2003:DIO:H2'1	2.33	0.43
1:A:670:LEU:HA	1:A:670:LEU:HD23	1.89	0.43
1:B:782:ARG:HD2	1:B:960:ALA:O	2.19	0.43
1:A:444:TYR:CD1	1:A:452:ALA:HB1	2.54	0.43
1:A:540:LEU:HD12	1:A:540:LEU:HA	1.77	0.43
1:A:416:ASP:O	1:A:420:VAL:HG23	2.19	0.43
1:B:44:ASN:HA	1:B:45:PRO:HD3	1.82	0.43
1:B:948:ALA:HB3	1:B:951:ARG:HB2	2.00	0.42
1:B:599:LEU:HD23	1:B:662:ILE:CD1	2.49	0.42
1:A:44:ASN:HA	1:A:45:PRO:HD3	1.69	0.42
1:B:158:LEU:HA	1:B:158:LEU:HD23	1.72	0.42
1:A:715:PHE:CZ	1:A:719:LEU:HG	2.54	0.42
1:B:779:TYR:CZ	1:B:995:MET:CE	3.02	0.42
1:B:946:VAL:HA	1:B:951:ARG:CZ	2.49	0.42
1:A:788:ASN:C	1:A:960:ALA:HB2	2.40	0.42
1:A:799:MET:CE	1:A:1008:VAL:HG22	2.49	0.42
1:B:94:ILE:HD12	1:B:94:ILE:HG23	1.47	0.42
1:B:927:TYR:CE2	1:B:931:LEU:HD11	2.55	0.42
1:B:196:ASN:ND2	1:B:198:ALA:N	2.68	0.42
1:A:979:ASN:N	1:A:979:ASN:OD1	2.52	0.42
1:B:721:SER:O	1:B:755:THR:HA	2.20	0.42
1:B:505:ILE:HA	1:B:506:PRO:HD3	1.76	0.42
1:B:782:ARG:HD3	1:B:959:LEU:HB2	2.00	0.42
1:A:116:LEU:HD21	4:A:2001:QIX:C25	2.42	0.42
1:A:815:ILE:HG22	1:A:870:MET:HG3	2.02	0.42
1:B:933:LYS:O	1:B:937:ILE:HG12	2.20	0.42
1:B:229:ARG:N	1:B:230:PRO:CD	2.83	0.42
1:B:518:LEU:HD23	1:B:518:LEU:HA	1.89	0.42
1:A:583:ALA:CB	1:A:626:GLY:HA2	2.49	0.42

*Continued on next page...*

*Continued from previous page...*

Atom-1	Atom-2	Distance(Å)	Clash(Å)
1:B:120:LYS:HG2	1:B:121:TYR:CE1	2.55	0.42
1:B:314:TYR:HB2	1:B:479:ALA:HB3	2.01	0.42
2:G:2:ALA:O	2:G:3:ALA:HB3	2.20	0.41
1:A:843:ILE:HG22	1:A:844:GLN:H	1.84	0.41
1:B:683:MET:HA	1:B:792:GLU:OE2	2.20	0.41
1:B:616:LEU:HD21	1:B:638:GLN:CG	2.50	0.41
1:A:346:LEU:HD21	1:A:394:MET:HG2	2.02	0.41
1:A:986:LEU:HA	1:A:987:PRO:HD3	1.92	0.41
1:B:73:ILE:HG13	1:B:251:SER:HB2	2.01	0.41
1:B:93:HIS:CD2	1:B:145:GLU:O	2.71	0.41
1:A:638:GLN:N	1:A:639:PRO:CD	2.83	0.41
1:B:387:VAL:HG21	1:B:480:ILE:HD13	2.01	0.41
1:B:210:ASN:OD1	1:B:212:LYS:HB2	2.21	0.41
1:B:131:LEU:CD1	1:B:138:SER:HB2	2.50	0.41
1:A:334:LEU:HD23	1:A:334:LEU:HA	1.95	0.41
1:B:325:TYR:CD1	1:B:463:LEU:HD13	2.55	0.41
1:A:229:ARG:HG2	1:A:229:ARG:NH1	2.33	0.41
1:A:677:GLN:HB3	1:A:678:PRO:CD	2.50	0.41
1:B:196:ASN:HD22	1:B:199:TRP:H	1.67	0.41
1:B:350:LEU:HB3	1:B:356:VAL:CG2	2.50	0.41
1:A:937:ILE:HG22	1:A:941:LYS:HD2	2.03	0.41
1:A:575:ASN:N	1:A:575:ASN:HD22	2.17	0.41
1:B:490:ASP:C	1:B:490:ASP:OD1	2.59	0.41
1:B:341:GLU:HG2	1:B:347:LEU:HD12	2.02	0.41
1:A:765:ARG:HA	1:A:765:ARG:HD2	1.75	0.41
1:B:78:ILE:O	1:B:259:LEU:HA	2.21	0.41
1:A:305:VAL:HA	1:A:306:PRO:HD2	1.80	0.41
1:B:44:ASN:OD1	1:B:45:PRO:HD2	2.21	0.41
1:A:599:LEU:HD23	1:A:599:LEU:HA	1.91	0.41
1:B:847:ARG:NH1	7:B:2158:HOH:O	2.20	0.41
1:A:67:LEU:HD21	1:A:268:THR:HG23	2.02	0.41
1:A:422:PHE:O	1:A:423:ARG:C	2.59	0.41
1:A:879:GLU:OE1	1:A:879:GLU:HA	2.20	0.40
1:A:222:ASN:O	1:A:226:LEU:HB2	2.21	0.40
1:A:806:MET:CE	1:A:928:LEU:HG	2.51	0.40
1:B:257:VAL:HG21	1:B:437:ILE:HG22	2.03	0.40
1:A:793:ILE:O	1:A:847:ARG:HA	2.21	0.40
1:B:545:THR:HA	1:B:546:PRO:HD3	1.74	0.40
1:A:712:LEU:HD23	1:A:712:LEU:HA	1.98	0.40
1:A:946:VAL:HA	1:A:951:ARG:CZ	2.51	0.40
1:A:810:LEU:HD13	1:A:936:ILE:HG13	2.02	0.40

All (1) symmetry-related close contacts are listed below. The label for Atom-2 includes the sym-

metry operator and encoded unit-cell translations to be applied.

Atom-1	Atom-2	Distance(Å)	Clash(Å)
1:A:408:GLU:OE1	1:A:734:THR:OG1[2_564]	2.17	0.03

## 5.3 Torsion angles

### 5.3.1 Protein backbone ⓘ

In the following table, the Percentiles column shows the percent Ramachandran outliers of the chain as a percentile score with respect to all X-ray entries followed by that with respect to entries of similar resolution. The Analysed column shows the number of residues for which the backbone conformation was analysed, and the total number of residues.

Mol	Chain	Analysed	Favoured	Allowed	Outliers	Percentiles	
1	A	958/1019 (94%)	917 (96%)	39 (4%)	2 (0%)	56	82
1	B	958/1019 (94%)	919 (96%)	29 (3%)	10 (1%)	22	45
2	F	1/3 (33%)	0	1 (100%)	0	100	100
2	G	1/3 (33%)	1 (100%)	0	0	100	100
All	All	1918/2044 (94%)	1837 (96%)	69 (4%)	12 (1%)	33	63

All (12) Ramachandran outliers are listed below:

Mol	Chain	Res	Type
1	A	968	VAL
1	B	52	ASN
1	B	965	SER
1	B	967	PRO
1	A	228	THR
1	B	93	HIS
1	B	520	GLY
1	B	981	SER
1	B	446	LEU
1	B	966	ASN
1	B	1010	PRO
1	B	405	GLY

### 5.3.2 Protein sidechains ⓘ

In the following table, the Percentiles column shows the percent sidechain outliers of the chain as a percentile score with respect to all X-ray entries followed by that with respect to entries of similar resolution. The Analysed column shows the number of residues for which the sidechain



conformation was analysed, and the total number of residues.

Mol	Chain	Analysed	Rotameric	Outliers	Percentiles	
1	A	855/906 (94%)	777 (91%)	78 (9%)	14	25
1	B	855/906 (94%)	780 (91%)	75 (9%)	14	27
All	All	1710/1812 (94%)	1557 (91%)	153 (9%)	14	26

All (153) residues with a non-rotameric sidechain are listed below:

Mol	Chain	Res	Type
1	A	76	LEU
1	A	97	LEU
1	A	102	ASN
1	A	125	ASN
1	A	158	LEU
1	A	188	SER
1	A	192	LYS
1	A	201	LEU
1	A	212	LYS
1	A	223	LYS
1	A	226	LEU
1	A	229	ARG
1	A	243	LYS
1	A	270	LEU
1	A	281	LYS
1	A	282	ASN
1	A	285	LEU
1	A	329	ASN
1	A	337	LEU
1	A	347	LEU
1	A	348	SER
1	A	414	LEU
1	A	415	LYS
1	A	417	LEU
1	A	431	ARG
1	A	440	ILE
1	A	446	LEU
1	A	449	VAL
1	A	450	LEU
1	A	466	MET
1	A	486	GLU
1	A	521	LYS
1	A	524	LEU
1	A	575	ASN

*Continued on next page...*



*Continued from previous page...*

Mol	Chain	Res	Type
1	A	577	GLU
1	A	595	LEU
1	A	597	LEU
1	A	603	SER
1	A	607	TYR
1	A	616	LEU
1	A	622	ASN
1	A	629	LEU
1	A	632	LYS
1	A	642	LEU
1	A	648	LYS
1	A	649	MET
1	A	657	LYS
1	A	669	SER
1	A	674	ARG
1	A	677	GLN
1	A	691	THR
1	A	711	ARG
1	A	712	LEU
1	A	719	LEU
1	A	728	LEU
1	A	736	GLN
1	A	744	MET
1	A	756	LYS
1	A	762	GLN
1	A	765	ARG
1	A	771	LEU
1	A	782	ARG
1	A	783	ASN
1	A	810	LEU
1	A	823	LEU
1	A	846	LEU
1	A	859	LEU
1	A	867	LEU
1	A	889	LEU
1	A	898	LYS
1	A	928	LEU
1	A	930	THR
1	A	931	LEU
1	A	934	GLU
1	A	957	HIS
1	A	968	VAL

*Continued on next page...*

*Continued from previous page...*

Mol	Chain	Res	Type
1	A	993	GLN
1	A	1007	LEU
1	B	43	ASN
1	B	57	SER
1	B	76	LEU
1	B	97	LEU
1	B	102	ASN
1	B	125	ASN
1	B	156	GLU
1	B	158	LEU
1	B	177	SER
1	B	179	LYS
1	B	192	LYS
1	B	196	ASN
1	B	201	LEU
1	B	223	LYS
1	B	226	LEU
1	B	229	ARG
1	B	270	LEU
1	B	285	LEU
1	B	287	GLU
1	B	290	GLU
1	B	299	LYS
1	B	333	TYR
1	B	337	LEU
1	B	347	LEU
1	B	348	SER
1	B	352	SER
1	B	415	LYS
1	B	417	LEU
1	B	423	ARG
1	B	431	ARG
1	B	440	ILE
1	B	450	LEU
1	B	466	MET
1	B	524	LEU
1	B	526	THR
1	B	556	MET
1	B	558	LYS
1	B	592	MET
1	B	595	LEU
1	B	597	LEU

*Continued on next page...*

*Continued from previous page...*

Mol	Chain	Res	Type
1	B	600	LEU
1	B	616	LEU
1	B	622	ASN
1	B	629	LEU
1	B	632	LYS
1	B	642	LEU
1	B	644	LYS
1	B	657	LYS
1	B	711	ARG
1	B	712	LEU
1	B	718	GLN
1	B	728	LEU
1	B	756	LYS
1	B	758	LEU
1	B	759	LEU
1	B	771	LEU
1	B	782	ARG
1	B	783	ASN
1	B	810	LEU
1	B	823	LEU
1	B	838	ARG
1	B	846	LEU
1	B	859	LEU
1	B	860	GLU
1	B	867	LEU
1	B	889	LEU
1	B	928	LEU
1	B	930	THR
1	B	931	LEU
1	B	933	LYS
1	B	934	GLU
1	B	943	MET
1	B	951	ARG
1	B	968	VAL
1	B	979	ASN

Some sidechains can be flipped to improve hydrogen bonding and reduce clashes. All (66) such sidechains are listed below:

Mol	Chain	Res	Type
1	A	43	ASN
1	A	93	HIS
1	A	102	ASN

*Continued on next page...*

*Continued from previous page...*

Mol	Chain	Res	Type
1	A	111	GLN
1	A	125	ASN
1	A	184	ASN
1	A	196	ASN
1	A	231	ASN
1	A	232	GLN
1	A	294	GLN
1	A	297	HIS
1	A	300	GLN
1	A	329	ASN
1	A	336	HIS
1	A	407	GLN
1	A	412	GLN
1	A	502	GLN
1	A	573	ASN
1	A	575	ASN
1	A	605	ASN
1	A	622	ASN
1	A	672	ASN
1	A	677	GLN
1	A	730	HIS
1	A	736	GLN
1	A	770	GLN
1	A	783	ASN
1	A	786	HIS
1	A	805	ASN
1	A	828	GLN
1	A	883	GLN
1	A	957	HIS
1	B	52	ASN
1	B	93	HIS
1	B	102	ASN
1	B	111	GLN
1	B	125	ASN
1	B	134	HIS
1	B	157	HIS
1	B	184	ASN
1	B	196	ASN
1	B	231	ASN
1	B	232	GLN
1	B	239	GLN
1	B	297	HIS

*Continued on next page...*

*Continued from previous page...*

Mol	Chain	Res	Type
1	B	300	GLN
1	B	363	GLN
1	B	393	HIS
1	B	407	GLN
1	B	502	GLN
1	B	575	ASN
1	B	589	HIS
1	B	605	ASN
1	B	622	ASN
1	B	672	ASN
1	B	730	HIS
1	B	736	GLN
1	B	783	ASN
1	B	805	ASN
1	B	821	ASN
1	B	828	GLN
1	B	883	GLN
1	B	914	GLN
1	B	957	HIS
1	B	966	ASN
1	B	979	ASN

### 5.3.3 RNA ⓘ

There are no RNA chains in this entry.

### 5.4 Non-standard residues in protein, DNA, RNA chains ⓘ

There are no non-standard protein/DNA/RNA residues in this entry.

### 5.5 Carbohydrates ⓘ

There are no carbohydrates in this entry.

### 5.6 Ligand geometry ⓘ

Of 25 ligands modelled in this entry, 2 are monoatomic - leaving 23 for Mogul analysis.

In the following table, the Counts columns list the number of bonds (or angles) for which Mogul statistics could be retrieved, the number of bonds (or angles) that are observed in the model and the number of bonds (or angles) that are defined in the chemical component dictionary. The Link

column lists molecule types, if any, to which the group is linked. The Z score for a bond length (or angle) is the number of standard deviations the observed value is removed from the expected value. A bond length (or angle) with  $|Z| > 2$  is considered an outlier worth inspection. RMSZ is the root-mean-square of all Z scores of the bond lengths (or angles).

Mol	Type	Chain	Res	Link	Bond lengths			Bond angles		
					Counts	RMSZ	# Z  > 2	Counts	RMSZ	# Z  > 2
4	QIX	A	2001	3	40,40,40	3.69	20 (50%)	52,52,52	3.66	28 (53%)
5	DIO	A	2002	-	6,6,6	1.02	0	6,6,6	0.61	0
5	DIO	A	2003	-	6,6,6	1.04	0	6,6,6	0.56	0
6	ACY	A	2004	-	3,3,3	1.78	1 (33%)	3,3,3	1.42	0
6	ACY	A	2005	-	3,3,3	1.55	1 (33%)	3,3,3	0.67	0
6	ACY	A	2006	-	3,3,3	1.61	1 (33%)	3,3,3	1.34	0
6	ACY	A	2007	-	3,3,3	1.70	1 (33%)	3,3,3	0.92	0
6	ACY	A	2008	-	3,3,3	1.97	1 (33%)	3,3,3	1.67	1 (33%)
6	ACY	A	2009	-	3,3,3	1.75	1 (33%)	3,3,3	1.49	1 (33%)
6	ACY	A	2010	-	3,3,3	1.61	1 (33%)	3,3,3	1.25	0
6	ACY	A	2011	-	3,3,3	1.48	1 (33%)	3,3,3	0.59	0
4	QIX	B	2001	3	40,40,40	3.59	19 (47%)	52,52,52	3.23	25 (48%)
5	DIO	B	2002	-	6,6,6	0.67	0	6,6,6	0.30	0
5	DIO	B	2003	-	6,6,6	0.93	0	6,6,6	0.64	0
5	DIO	B	2004	-	6,6,6	1.16	0	6,6,6	0.59	0
5	DIO	B	2005	-	6,6,6	1.34	0	6,6,6	0.49	0
5	DIO	B	2006	-	6,6,6	1.04	0	6,6,6	0.28	0
6	ACY	B	2007	-	3,3,3	1.89	2 (66%)	3,3,3	1.49	0
6	ACY	B	2008	-	3,3,3	1.66	1 (33%)	3,3,3	0.81	0
6	ACY	B	2009	-	3,3,3	1.75	1 (33%)	3,3,3	1.17	0
6	ACY	B	2010	-	3,3,3	1.74	1 (33%)	3,3,3	1.07	0
6	ACY	B	2011	-	3,3,3	1.87	2 (66%)	3,3,3	0.98	0
6	ACY	B	2012	-	3,3,3	1.46	1 (33%)	3,3,3	1.02	0

In the following table, the Chirals column lists the number of chiral outliers, the number of chiral centers analysed, the number of these observed in the model and the number defined in the chemical component dictionary. Similar counts are reported in the Torsion and Rings columns. '-' means no outliers of that kind were identified.

Mol	Type	Chain	Res	Link	Chirals	Torsions	Rings
4	QIX	A	2001	3	-	0/39/39/39	0/0/2/2
5	DIO	A	2002	-	-	0/0/6/6	0/1/1/1
5	DIO	A	2003	-	-	0/0/6/6	0/1/1/1
6	ACY	A	2004	-	-	0/0/0/0	0/0/0/0

*Continued on next page...*

*Continued from previous page...*

Mol	Type	Chain	Res	Link	Chirals	Torsions	Rings
6	ACY	A	2005	-	-	0/0/0/0	0/0/0/0
6	ACY	A	2006	-	-	0/0/0/0	0/0/0/0
6	ACY	A	2007	-	-	0/0/0/0	0/0/0/0
6	ACY	A	2008	-	-	0/0/0/0	0/0/0/0
6	ACY	A	2009	-	-	0/0/0/0	0/0/0/0
6	ACY	A	2010	-	-	0/0/0/0	0/0/0/0
6	ACY	A	2011	-	-	0/0/0/0	0/0/0/0
4	QIX	B	2001	3	-	0/39/39/39	0/0/2/2
5	DIO	B	2002	-	-	0/0/6/6	0/1/1/1
5	DIO	B	2003	-	-	0/0/6/6	0/1/1/1
5	DIO	B	2004	-	-	0/0/6/6	0/1/1/1
5	DIO	B	2005	-	-	0/0/6/6	0/1/1/1
5	DIO	B	2006	-	-	0/0/6/6	0/1/1/1
6	ACY	B	2007	-	-	0/0/0/0	0/0/0/0
6	ACY	B	2008	-	-	0/0/0/0	0/0/0/0
6	ACY	B	2009	-	-	0/0/0/0	0/0/0/0
6	ACY	B	2010	-	-	0/0/0/0	0/0/0/0
6	ACY	B	2011	-	-	0/0/0/0	0/0/0/0
6	ACY	B	2012	-	-	0/0/0/0	0/0/0/0

All (55) bond length outliers are listed below:

Mol	Chain	Res	Type	Atoms	Z	Observed(Å)	Ideal(Å)
4	B	2001	QIX	C14-N16	11.75	1.44	1.32
4	A	2001	QIX	C14-N16	11.11	1.44	1.32
4	A	2001	QIX	C43-N45	8.15	1.52	1.33
4	B	2001	QIX	C29-N31	7.94	1.50	1.33
4	A	2001	QIX	C02-N04	7.62	1.49	1.33
4	B	2001	QIX	C43-N45	7.03	1.50	1.33
4	B	2001	QIX	C02-N04	6.66	1.47	1.33
4	A	2001	QIX	C29-N31	5.78	1.46	1.33
4	A	2001	QIX	C10-N09	5.77	1.47	1.34
4	A	2001	QIX	C28-C19	5.39	1.49	1.37
4	A	2001	QIX	C52-N53	5.27	1.50	1.32
4	B	2001	QIX	C52-N53	5.26	1.50	1.32
4	B	2001	QIX	C25-C26	5.15	1.48	1.36
4	A	2001	QIX	C25-C26	5.07	1.48	1.36
4	B	2001	QIX	C10-N09	4.63	1.44	1.34
4	B	2001	QIX	C28-C19	4.25	1.46	1.37
4	A	2001	QIX	C27-C22	4.12	1.51	1.42
4	A	2001	QIX	C28-C27	4.01	1.51	1.42
4	B	2001	QIX	C21-C20	3.87	1.44	1.36

*Continued on next page...*

*Continued from previous page...*

Mol	Chain	Res	Type	Atoms	Z	Observed(Å)	Ideal(Å)
4	B	2001	QIX	C20-C19	3.69	1.47	1.38
4	A	2001	QIX	C02-N03	3.53	1.50	1.34
4	B	2001	QIX	C27-C22	3.40	1.50	1.42
4	A	2001	QIX	C21-C20	3.37	1.43	1.36
4	A	2001	QIX	C25-C24	3.35	1.47	1.37
4	B	2001	QIX	C24-C23	3.22	1.44	1.36
4	B	2001	QIX	C02-N03	3.22	1.49	1.34
6	A	2008	ACY	OXT-C	3.19	1.46	1.30
4	A	2001	QIX	C24-C23	3.08	1.43	1.36
4	A	2001	QIX	C46-C52	3.05	1.59	1.52
4	B	2001	QIX	C25-C24	3.04	1.46	1.37
4	A	2001	QIX	C20-C19	3.01	1.45	1.38
4	A	2001	QIX	C23-C22	2.88	1.49	1.41
4	B	2001	QIX	C12-C10	2.87	1.56	1.51
4	A	2001	QIX	C12-C10	2.85	1.56	1.51
4	B	2001	QIX	C28-C27	2.85	1.48	1.42
6	A	2009	ACY	OXT-C	2.61	1.43	1.30
6	B	2011	ACY	OXT-C	2.49	1.42	1.30
6	B	2007	ACY	OXT-C	2.44	1.42	1.30
6	B	2009	ACY	OXT-C	2.43	1.42	1.30
6	B	2010	ACY	OXT-C	2.40	1.42	1.30
6	A	2007	ACY	OXT-C	2.39	1.42	1.30
6	A	2004	ACY	OXT-C	2.38	1.42	1.30
4	B	2001	QIX	C23-C22	2.34	1.47	1.41
6	A	2011	ACY	OXT-C	2.28	1.41	1.30
6	B	2008	ACY	OXT-C	2.28	1.41	1.30
6	A	2010	ACY	OXT-C	2.25	1.41	1.30
4	B	2001	QIX	O15-C14	-2.23	1.18	1.23
6	A	2005	ACY	OXT-C	2.22	1.41	1.30
4	B	2001	QIX	O11-C10	-2.14	1.19	1.23
6	A	2006	ACY	OXT-C	2.13	1.40	1.30
6	B	2012	ACY	OXT-C	2.09	1.40	1.30
6	B	2007	ACY	CH3-C	2.07	1.58	1.49
6	B	2011	ACY	CH3-C	2.04	1.58	1.49
4	A	2001	QIX	O30-C29	-2.02	1.19	1.23
4	A	2001	QIX	C13-C14	2.01	1.55	1.51

All (55) bond angle outliers are listed below:

Mol	Chain	Res	Type	Atoms	Z	Observed(°)	Ideal(°)
4	A	2001	QIX	C18-C19-C28	13.11	135.55	121.25
4	B	2001	QIX	C18-C12-C13	-10.24	98.74	111.39

*Continued on next page...*



*Continued from previous page...*

Mol	Chain	Res	Type	Atoms	Z	Observed(°)	Ideal(°)
4	A	2001	QIX	C18-C12-C13	-9.24	99.97	111.39
4	A	2001	QIX	C18-C19-C20	-8.84	103.55	120.90
4	B	2001	QIX	C18-C19-C28	8.59	130.62	121.25
4	B	2001	QIX	C18-C19-C20	-7.03	107.12	120.90
4	B	2001	QIX	C18-C12-C10	5.39	118.38	110.06
4	B	2001	QIX	C05-N04-C02	-5.37	114.02	124.14
4	A	2001	QIX	C32-N31-C29	-5.30	109.55	121.29
4	A	2001	QIX	C19-C28-C27	-5.28	112.55	121.14
4	B	2001	QIX	C43-C32-N31	-5.11	99.29	113.20
4	A	2001	QIX	C24-C25-C26	5.01	127.80	120.47
4	A	2001	QIX	C18-C12-C10	4.99	117.77	110.06
4	B	2001	QIX	C19-C28-C27	-4.89	113.18	121.14
4	A	2001	QIX	C05-N04-C02	-4.84	115.02	124.14
4	B	2001	QIX	C07-C08-N09	-4.75	101.79	110.83
4	A	2001	QIX	C23-C22-C27	4.50	127.23	118.91
4	A	2001	QIX	O11-C10-C12	-4.18	117.50	121.89
4	A	2001	QIX	O15-C14-N16	-4.16	118.46	123.47
4	A	2001	QIX	C23-C22-C21	-4.14	113.62	123.22
4	A	2001	QIX	O44-C43-N45	4.09	131.04	122.94
4	B	2001	QIX	C19-C18-C12	-4.01	107.57	113.49
4	A	2001	QIX	O30-C29-N31	-3.95	115.03	123.05
4	A	2001	QIX	C28-C27-C22	3.91	124.63	118.93
4	B	2001	QIX	C23-C22-C21	-3.70	114.63	123.22
4	B	2001	QIX	C13-C14-N16	3.57	117.17	114.69
4	B	2001	QIX	C28-C27-C22	3.54	124.09	118.93
4	B	2001	QIX	C20-C21-C22	-3.50	115.33	120.83
4	B	2001	QIX	C12-C10-N09	3.45	121.66	116.19
4	A	2001	QIX	C19-C18-C12	-3.39	108.49	113.49
4	A	2001	QIX	C21-C20-C19	3.18	126.66	121.12
4	B	2001	QIX	C23-C22-C27	3.11	124.67	118.91
4	A	2001	QIX	C25-C24-C23	-3.05	116.01	120.47
4	B	2001	QIX	C06-C05-N04	-2.97	103.26	112.21
4	A	2001	QIX	C20-C21-C22	-2.95	116.19	120.83
4	B	2001	QIX	C24-C25-C26	2.94	124.77	120.47
4	A	2001	QIX	C12-C10-N09	2.79	120.61	116.19
4	B	2001	QIX	O44-C43-C32	-2.68	115.11	120.66
4	A	2001	QIX	C08-C29-N31	2.65	121.90	116.72
4	B	2001	QIX	O11-C10-N09	-2.65	117.83	122.93
4	B	2001	QIX	C06-C07-C08	-2.63	105.57	114.03
4	B	2001	QIX	C07-C08-C29	2.55	116.24	110.31
4	A	2001	QIX	C26-C27-C22	-2.53	114.23	118.91
6	A	2008	ACY	O-C-CH3	-2.49	111.20	122.06

*Continued on next page...*

*Continued from previous page...*

Mol	Chain	Res	Type	Atoms	Z	Observed(°)	Ideal(°)
4	A	2001	QIX	C46-C52-N53	2.44	123.09	116.90
4	A	2001	QIX	C29-C08-N09	-2.42	104.49	111.28
4	B	2001	QIX	O15-C14-N16	-2.38	120.60	123.47
4	B	2001	QIX	C20-C19-C28	2.31	122.19	118.98
4	A	2001	QIX	O44-C43-C32	-2.30	115.88	120.66
4	A	2001	QIX	O54-C52-N53	-2.18	116.07	122.47
4	A	2001	QIX	C24-C23-C22	-2.17	116.87	120.43
4	B	2001	QIX	C46-N45-C43	2.06	127.52	121.34
4	B	2001	QIX	N04-C02-N01	-2.05	116.42	120.35
4	A	2001	QIX	C07-C08-N09	-2.05	106.93	110.83
6	A	2009	ACY	O-C-CH3	-2.01	113.28	122.06

There are no chirality outliers.

There are no torsion outliers.

There are no ring outliers.

## 5.7 Other polymers ⓘ

There are no such residues in this entry.

## 5.8 Polymer linkage issues

There are no chain breaks in this entry.

## 6 Fit of model and data ⓘ

### 6.1 Protein, DNA and RNA chains ⓘ

In the following table, the column labelled ‘#RSRZ> 2’ contains the number (and percentage) of RSRZ outliers, followed by percent RSRZ outliers for the chain as percentile scores relative to all X-ray entries and entries of similar resolution. The OWAB column contains the minimum, median, 95<sup>th</sup> percentile and maximum values of the occupancy-weighted average B-factor per residue. The column labelled ‘Q< 0.9’ lists the number of (and percentage) of residues with an average occupancy less than 0.9.

Mol	Chain	Analysed	<RSRZ>	#RSRZ>2	OWAB(Å <sup>2</sup> )	Q<0.9
1	A	961/1019 (94%)	-0.66	6 (0%) 86 89	16, 33, 55, 100	0
1	B	961/1019 (94%)	-0.64	5 (0%) 88 90	24, 37, 58, 102	0
2	F	3/3 (100%)	0.55	0 100 100	52, 52, 55, 56	0
2	G	3/3 (100%)	0.61	0 100 100	42, 42, 45, 51	0
All	All	1928/2044 (94%)	-0.65	11 (0%) 86 89	16, 35, 57, 102	0

All (11) RSRZ outliers are listed below:

Mol	Chain	Res	Type	RSRZ
1	A	966	ASN	5.5
1	B	966	ASN	5.0
1	A	968	VAL	3.4
1	A	967	PRO	3.3
1	B	968	VAL	3.3
1	B	969	VAL	3.0
1	B	967	PRO	2.9
1	A	969	VAL	2.7
1	B	43	ASN	2.7
1	A	964	ASP	2.4
1	A	970	GLY	2.1

### 6.2 Non-standard residues in protein, DNA, RNA chains ⓘ

There are no non-standard protein/DNA/RNA residues in this entry.

### 6.3 Carbohydrates ⓘ

There are no carbohydrates in this entry.

## 6.4 Ligands ⓘ

In the following table, the Atoms column lists the number of modelled atoms in the group and the number defined in the chemical component dictionary. LLDF column lists the quality of electron density of the group with respect to its neighbouring residues in protein, DNA or RNA chains. The B-factors column lists the minimum, median, 95<sup>th</sup> percentile and maximum values of B factors of atoms in the group. The column labelled 'Q < 0.9' lists the number of atoms with occupancy less than 0.9.

Mol	Type	Chain	Res	Atoms	RSR	LLDF	B-factors(Å <sup>2</sup> )	Q<0.9
5	DIO	B	2003	6/6	0.21	16.38	35,56,63,86	0
5	DIO	B	2006	6/6	0.24	8.50	69,76,87,90	0
5	DIO	A	2003	6/6	0.21	8.45	31,43,51,60	0
6	ACY	A	2010	4/4	0.18	7.86	33,53,56,58	0
4	QIX	A	2001	39/39	0.19	5.64	33,53,81,84	0
5	DIO	B	2004	6/6	0.16	4.99	51,64,67,78	0
4	QIX	B	2001	39/39	0.19	4.95	40,58,90,102	0
5	DIO	B	2005	6/6	0.22	3.24	55,70,84,95	0
5	DIO	B	2002	6/6	0.16	2.55	33,38,46,54	0
6	ACY	B	2010	4/4	0.14	1.81	29,52,60,63	0
6	ACY	A	2011	4/4	0.14	1.52	24,37,42,51	0
6	ACY	B	2012	4/4	0.14	1.52	42,51,56,59	0
6	ACY	A	2009	4/4	0.14	1.23	45,49,60,65	0
5	DIO	A	2002	6/6	0.12	1.12	45,59,65,67	0
3	ZN	B	2000	1/1	0.11	0.46	32,32,32,32	0
6	ACY	A	2008	4/4	0.15	0.34	41,43,53,60	0
6	ACY	B	2007	4/4	0.18	-0.04	43,60,65,75	0
6	ACY	A	2007	4/4	0.13	-0.09	38,51,60,66	0
3	ZN	A	2000	1/1	0.11	-0.27	31,31,31,31	0
6	ACY	A	2006	4/4	0.12	-0.34	32,62,70,82	0
6	ACY	B	2008	4/4	0.12	-0.55	56,61,68,69	0
6	ACY	A	2004	4/4	0.12	-0.56	51,60,64,74	0
6	ACY	B	2011	4/4	0.12	-1.07	28,53,55,70	0
6	ACY	B	2009	4/4	0.12	-1.18	34,48,57,58	0
6	ACY	A	2005	4/4	0.11	-2.82	42,53,61,68	0

## 6.5 Other polymers ⓘ

There are no such residues in this entry.