



Full wwPDB X-ray Structure Validation Report

Feb 28, 2014 – 01:53 AM GMT

PDB ID : 4E4K
Title : Crystal Structure of PPARgamma with the ligand JO21
Authors : Pochetti, G.; Montanari, R.; Loiodice, F.; Fracchiolla, G.; Laghezza, A.; Carbonara, G.; Piemontese, L.; Lavecchia, A.; Novellino, E.
Deposited on : 2012-03-13
Resolution : 2.50 Å(reported)

This is a full wwPDB validation report for a publicly released PDB entry.
We welcome your comments at validation@mail.wwpdb.org
A user guide is available at <http://wwpdb.org/ValidationPDFNotes.html>

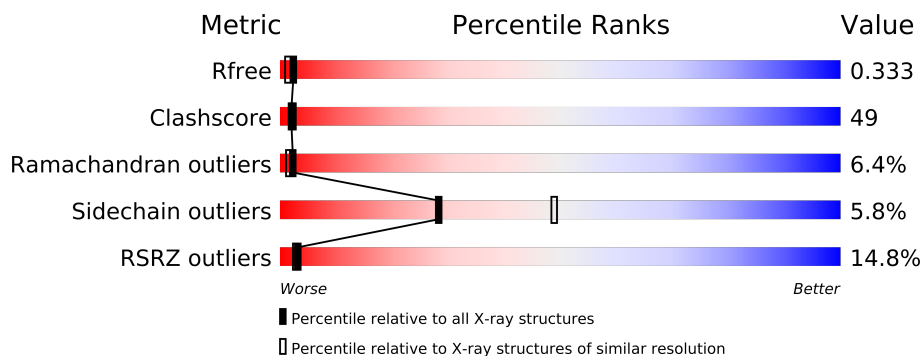
The following versions of software and data (see [references](#)) were used in the production of this report:

MolProbity : 4.02b-467
Mogul : 1.15 2013
Xtriage (Phenix) : dev-1323
EDS : stable22639
Percentile statistics : 21963
Refmac : 5.8.0049
CCP4 : 6.3.0 (Settle)
Ideal geometry (proteins) : Engh & Huber (2001)
Ideal geometry (DNA, RNA) : Parkinson et. al. (1996)
Validation Pipeline (wwPDB-VP) : stable22683

1 Overall quality at a glance

The reported resolution of this entry is 2.50 Å.

Percentile scores (ranging between 0-100) for global validation metrics of the entry are shown in the following graphic. The table shows the number of entries on which the scores are based.



Metric	Whole archive (#Entries)	Similar resolution (#Entries, resolution range(Å))
R_{free}	66092	2784 (2.50-2.50)
Clashscore	79885	3562 (2.50-2.50)
Ramachandran outliers	78287	3480 (2.50-2.50)
Sidechain outliers	78261	3482 (2.50-2.50)
RSRZ outliers	66119	2785 (2.50-2.50)

The table below summarises the geometric issues observed across the polymeric chains and their fit to the electron density. The red, orange, yellow and green segments on the lower bar indicate the fraction of residues that contain outliers for ≥ 3 , 2, 1 and 0 types of geometric quality criteria. The upper red bar (where present) indicates the fraction of residues that have poor fit to the electron density.

Mol	Chain	Length	Quality of chain
1	A	287	
1	B	287	

The following table lists non-polymeric compounds that are outliers for geometric or electron-density-fit criteria:

Mol	Type	Chain	Res	Geometry	Electron density
2	RRG	A	502	-	X

2 Entry composition

There are 3 unique types of molecules in this entry. The entry contains 4486 atoms, of which 0 are hydrogen and 0 are deuterium.

In the tables below, the ZeroOcc column contains the number of atoms modelled with zero occupancy, the AltConf column contains the number of residues with at least one atom in alternate conformation and the Trace column contains the number of residues modelled with at most 2 atoms.

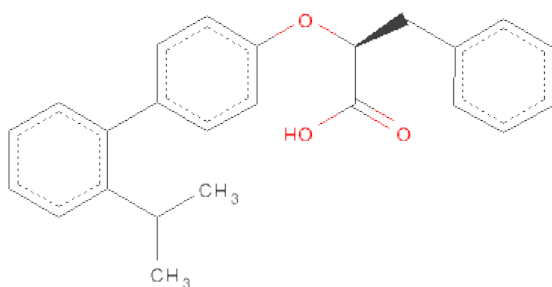
- Molecule 1 is a protein called Peroxisome proliferator-activatedreceptor gamma.

Mol	Chain	Residues	Atoms					ZeroOcc	AltConf	Trace
1	A	268	Total	C	N	O	S	0	0	0
			2149	1387	352	400	10			
1	B	268	Total	C	N	O	S	28	0	0
			2149	1387	352	400	10			

There are 8 discrepancies between the modelled and reference sequences:

Chain	Residue	Modelled	Actual	Comment	Reference
A	191	GLY	-	EXPRESSION TAG	UNP P37231
A	192	SER	-	EXPRESSION TAG	UNP P37231
A	193	HIS	-	EXPRESSION TAG	UNP P37231
A	194	MET	-	EXPRESSION TAG	UNP P37231
B	191	GLY	-	EXPRESSION TAG	UNP P37231
B	192	SER	-	EXPRESSION TAG	UNP P37231
B	193	HIS	-	EXPRESSION TAG	UNP P37231
B	194	MET	-	EXPRESSION TAG	UNP P37231

- Molecule 2 is (2S)-3-PHENYL-2-{{2'-(PROPAN-2-YL)BIPHENYL-4-YL}OXY}PROPANOIC ACID (three-letter code: RRG) (formula: C₂₄H₂₄O₃).



Mol	Chain	Residues	Atoms			ZeroOcc	AltConf
2	A	1	Total	C	O	0	0
			27	24	3		
2	A	1	Total	C	O	0	0
			27	24	3		

- Molecule 3 is water.

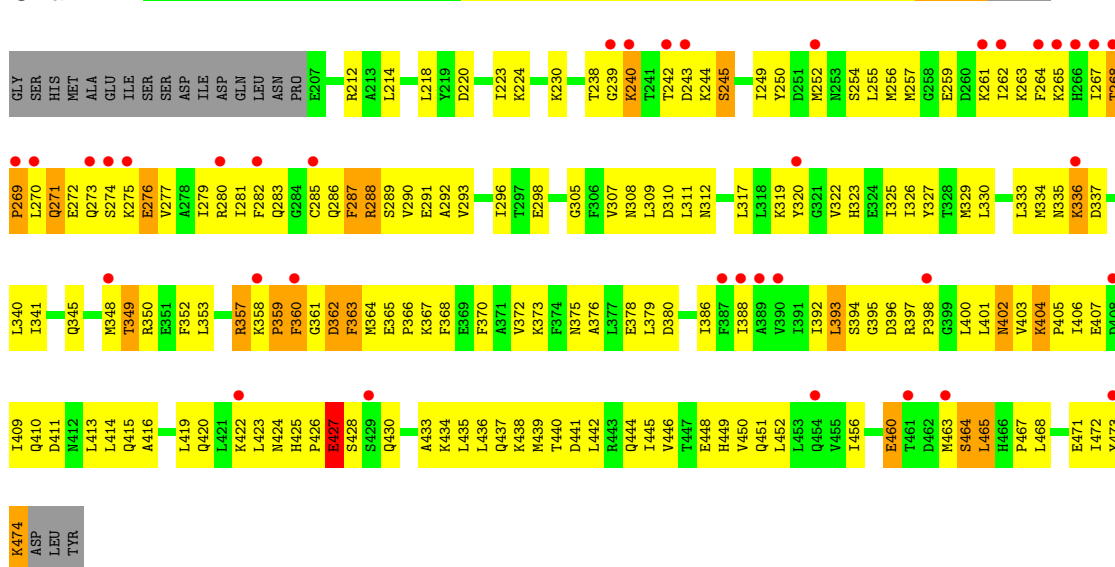
Mol	Chain	Residues	Atoms		ZeroOcc	AltConf
3	A	65	Total	O	0	0
			65	65		
3	B	69	Total	O	0	0
			69	69		

3 Residue-property plots

These plots are drawn for all protein, RNA and DNA chains in the entry. The first graphic for a chain summarises the proportions of errors displayed in the second graphic. The second graphic shows the sequence view annotated by issues in geometry and electron density. Residues are color-coded according to the number of geometric quality criteria for which they contain at least one outlier: green = 0, yellow = 1, orange = 2 and red = 3 or more. A red dot above a residue indicates a poor fit to the electron density ($RSRZ > 2$). Stretches of 2 or more consecutive residues without any outlier are shown as a green connector. Residues present in the sample, but not in the model, are shown in grey.

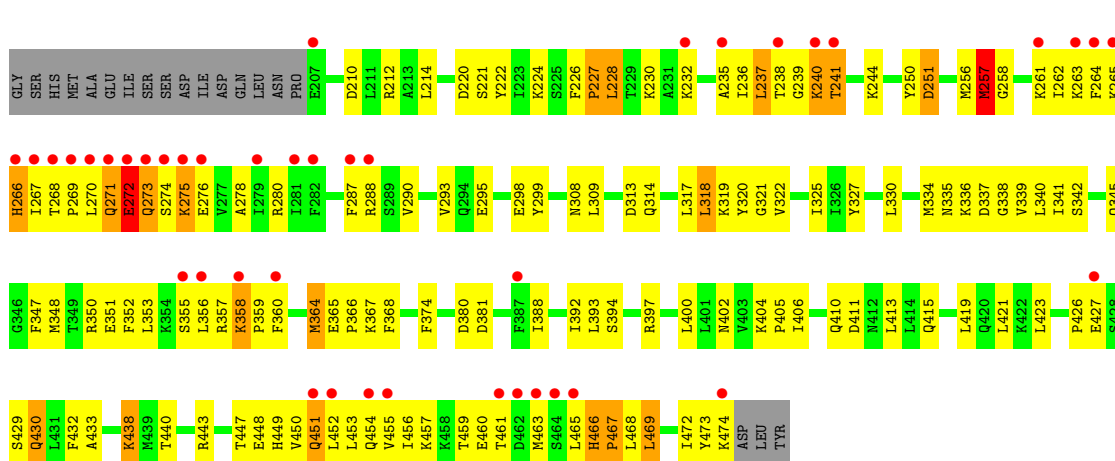
- Molecule 1: Peroxisome proliferator-activatedreceptor gamma

Chain A:



- Molecule 1: Peroxisome proliferator-activatedreceptor gamma

Chain B:



4 Data and refinement statistics

Property	Value	Source
Space group	C 1 2 1	Depositor
Cell constants a, b, c, α , β , γ	93.01Å 62.12Å 118.98Å 90.00° 102.42° 90.00°	Depositor
Resolution (Å)	10.00 – 2.50 24.62 – 2.50	Depositor EDS
% Data completeness (in resolution range)	(Not available) (10.00-2.50) 99.9 (24.62-2.50)	Depositor EDS
R_{merge}	0.07	Depositor
R_{sym}	(Not available)	Depositor
$\langle I/\sigma(I) \rangle$ ¹	2.80 (at 2.50Å)	Xtriage
Refinement program	CNS	Depositor
R, R_{free}	0.265 , 0.335 0.269 , 0.333	Depositor DCC
R_{free} test set	1095 reflections (4.81%)	DCC
Wilson B-factor (Å ²)	47.6	Xtriage
Anisotropy	0.744	Xtriage
Bulk solvent k_{sol} (e/Å ³), B_{sol} (Å ²)	0.36 , 59.3	EDS
Estimated twinning fraction	No twinning to report.	Xtriage
L-test for twinning	$\langle L \rangle = 0.49$, $\langle L^2 \rangle = 0.32$	Xtriage
Outliers	2 of 23140 reflections (0.009%)	Xtriage
F_o, F_c correlation	0.92	EDS
Total number of atoms	4486	wwPDB-VP
Average B, all atoms (Å ²)	61.0	wwPDB-VP

Xtriage's analysis on translational NCS is as follows: *The largest off-origin peak in the Patterson function is 6.20% of the height of the origin peak. No significant pseudotranslation is detected.*

¹Intensities estimated from amplitudes.

5 Model quality i

5.1 Standard geometry i

Bond lengths and bond angles in the following residue types are not validated in this section: RRG

The Z score for a bond length (or angle) is the number of standard deviations the observed value is removed from the expected value. A bond length (or angle) with $|Z| > 5$ is considered an outlier worth inspection. RMSZ is the root-mean-square of all Z scores of the bond lengths (or angles).

Mol	Chain	Bond lengths		Bond angles	
		RMSZ	$\# Z > 5$	RMSZ	$\# Z > 5$
1	A	0.43	0/2186	0.63	0/2945
1	B	0.52	0/2186	0.69	1/2945 (0.0%)
All	All	0.48	0/4372	0.66	1/5890 (0.0%)

There are no bond length outliers.

All (1) bond angle outliers are listed below:

Mol	Chain	Res	Type	Atoms	Z	Observed(°)	Ideal(°)
1	B	257	MET	C-N-CA	-5.27	111.22	122.30

There are no chirality outliers.

There are no planarity outliers.

5.2 Close contacts i

In the following table, the Non-H and H(model) columns list the number of non-hydrogen atoms and hydrogen atoms in the chain respectively. The H(added) column lists the number of hydrogens added by MolProbity. The Clashes column lists the number of clashes within the asymmetric unit, and the number in parentheses is this value normalized per 1000 atoms of the molecule in the chain. The Symm-Clashes column gives symmetry related clashes, in the same way as for the Clashes column.

Mol	Chain	Non-H	H(model)	H(added)	Clashes	Symm-Clashes
1	A	2149	0	2217	263	0
1	B	2149	0	2217	151	0
2	A	54	0	46	77	0
3	A	65	0	0	22	0
3	B	69	0	0	25	0
All	All	4486	0	4480	434	0

Clashscore is defined as the number of clashes calculated for the entry per 1000 atoms (including hydrogens) of the entry. The overall clashscore for this entry is 49.

All (434) close contacts within the same asymmetric unit are listed below.

Atom-1	Atom-2	Distance(Å)	Clash(Å)
2:A:501:RRG:H15	2:A:501:RRG:H19	1.36	1.07
2:A:502:RRG:H14	2:A:502:RRG:H4	1.19	1.07
2:A:501:RRG:H4	2:A:502:RRG:CAF	1.86	1.06
1:A:460:GLU:HB3	1:A:463:MET:HB2	1.38	1.05
1:A:364:MET:SD	2:A:501:RRG:H7	1.97	1.05
2:A:501:RRG:CAZ	2:A:502:RRG:H21	1.88	1.03
1:B:258:GLY:O	1:B:262:ILE:HG22	1.57	1.03
2:A:501:RRG:H12	2:A:502:RRG:H21	1.39	1.01
1:A:325:ILE:HG23	1:A:388:ILE:HD12	1.46	0.96
1:A:268:THR:H	1:A:269:PRO:HD2	1.31	0.95
1:A:293:VAL:HG22	1:A:322:VAL:HG21	1.47	0.95
2:A:502:RRG:CAZ	2:A:502:RRG:H14	1.98	0.94
1:A:267:ILE:HD12	1:A:280:ARG:HD2	1.51	0.92
1:A:440:THR:HB	1:B:440:THR:HG22	1.50	0.92
1:A:326:ILE:HD13	2:A:502:RRG:H24	1.50	0.92
1:A:330:LEU:HD21	2:A:501:RRG:H6	1.50	0.92
2:A:501:RRG:H4	2:A:502:RRG:H21	0.94	0.91
1:A:282:PHE:CE2	2:A:501:RRG:H10	2.05	0.91
1:A:288:ARG:HH21	1:A:291:GLU:HB2	1.36	0.90
1:B:325:ILE:HD12	1:B:388:ILE:HG23	1.53	0.89
1:B:298:GLU:HG3	3:B:521:HOH:O	1.73	0.88
1:A:271:GLN:HB2	1:A:276:GLU:HA	1.56	0.88
1:A:449:HIS:CE1	2:A:502:RRG:H15	2.09	0.87
1:A:292:ALA:O	1:A:296:ILE:HG13	1.75	0.86
1:A:419:LEU:HA	1:A:422:LYS:HE2	1.57	0.85
2:A:501:RRG:H12	2:A:502:RRG:CAF	2.06	0.85
2:A:501:RRG:H12	2:A:501:RRG:H4	1.56	0.84
1:A:286:GLN:NE2	1:A:465:LEU:HD12	1.92	0.83
1:A:230:LYS:HE3	1:A:379:LEU:O	1.77	0.82
1:A:357:ARG:HG2	1:A:358:LYS:H	1.45	0.82
1:A:286:GLN:HE22	1:A:465:LEU:HA	1.43	0.81
1:A:460:GLU:HB3	1:A:463:MET:CB	2.09	0.81
1:A:293:VAL:HG11	1:A:468:LEU:HD11	1.61	0.81
1:A:282:PHE:HB3	2:A:502:RRG:H7	1.63	0.80
1:A:288:ARG:HH21	1:A:291:GLU:CB	1.94	0.80
2:A:502:RRG:CAP	2:A:502:RRG:H4	2.06	0.79
1:A:319:LYS:NZ	1:A:474:LYS:HD3	1.98	0.79
1:A:473:TYR:O	1:A:474:LYS:HD2	1.83	0.78
1:A:238:THR:C	1:A:240:LYS:H	1.87	0.78

Continued on next page...

Continued from previous page...

Atom-1	Atom-2	Distance(Å)	Clash(Å)
1:A:322:VAL:HG11	1:A:472:ILE:HD13	1.66	0.77
1:A:265:LYS:NZ	1:A:265:LYS:HB3	1.98	0.77
1:A:286:GLN:HB2	2:A:502:RRG:H11	1.65	0.77
1:A:286:GLN:HB2	2:A:502:RRG:H12	1.66	0.77
1:A:330:LEU:CD2	2:A:501:RRG:H6	2.15	0.77
1:A:363:PHE:HB3	2:A:501:RRG:H9	1.65	0.77
1:A:433:ALA:O	1:A:437:GLN:HG3	1.84	0.77
1:A:350:ARG:NH1	1:A:368:PHE:HB3	2.00	0.76
1:A:293:VAL:HG22	1:A:322:VAL:CG2	2.16	0.76
1:B:222:TYR:CE1	1:B:381:ASP:HB3	2.22	0.75
1:B:463:MET:HB2	3:B:511:HOH:O	1.86	0.73
1:B:293:VAL:HG22	1:B:322:VAL:HG11	1.71	0.73
1:A:270:LEU:HD11	1:A:273:GLN:H	1.53	0.72
1:A:271:GLN:HB3	1:A:280:ARG:NH1	2.03	0.72
1:A:430:GLN:O	1:A:434:LYS:HG2	1.89	0.72
1:A:262:ILE:HG22	1:A:263:LYS:H	1.53	0.72
1:B:275:LYS:HE3	1:B:275:LYS:HA	1.72	0.72
1:A:238:THR:O	1:A:240:LYS:N	2.23	0.72
1:B:271:GLN:HE21	1:B:271:GLN:HA	1.54	0.72
1:A:402:ASN:HD22	1:A:402:ASN:N	1.86	0.71
1:A:357:ARG:HG2	1:A:358:LYS:N	2.03	0.71
2:A:501:RRG:CAN	2:A:501:RRG:H19	2.18	0.71
1:A:270:LEU:HD22	1:A:271:GLN:H	1.54	0.71
1:A:406:ILE:HB	3:A:652:HOH:O	1.89	0.71
1:A:325:ILE:HD13	1:A:388:ILE:HG23	1.72	0.71
1:A:364:MET:CE	2:A:501:RRG:H7	2.21	0.70
1:B:264:PHE:CZ	1:B:266:HIS:HB3	2.27	0.70
1:B:222:TYR:HE1	1:B:381:ASP:HB3	1.54	0.70
1:B:449:HIS:HE1	1:B:453:LEU:HD22	1.56	0.70
1:A:305:GLY:HA2	1:A:308:ASN:HD22	1.56	0.70
1:A:286:GLN:CB	2:A:502:RRG:H12	2.22	0.70
1:B:466:HIS:HA	3:B:505:HOH:O	1.92	0.70
1:A:437:GLN:O	1:A:440:THR:HG22	1.92	0.70
1:B:264:PHE:CE2	1:B:266:HIS:HB3	2.27	0.70
1:A:319:LYS:HZ3	1:A:474:LYS:HD3	1.56	0.70
1:A:249:ILE:HD12	1:A:255:LEU:HA	1.75	0.69
1:A:364:MET:SD	2:A:501:RRG:CAB	2.79	0.69
1:A:395:GLY:C	1:A:397:ARG:H	1.95	0.69
1:B:220:ASP:O	1:B:224:LYS:HG2	1.93	0.69
1:A:282:PHE:HD2	2:A:502:RRG:CAB	2.06	0.69
1:A:359:PRO:HG2	1:A:360:PHE:H	1.58	0.68
1:B:350:ARG:HB3	3:B:525:HOH:O	1.94	0.68

Continued on next page...

Continued from previous page...

Atom-1	Atom-2	Distance(Å)	Clash(Å)
1:A:268:THR:N	1:A:269:PRO:HD2	2.08	0.68
1:A:286:GLN:NE2	1:A:465:LEU:HA	2.09	0.68
2:A:502:RRG:CAZ	2:A:502:RRG:CAP	2.66	0.68
1:B:327:TYR:OH	1:B:449:HIS:HD2	1.76	0.67
1:B:392:ILE:HG23	3:B:543:HOH:O	1.94	0.67
2:A:501:RRG:H15	2:A:501:RRG:CAR	2.21	0.67
1:B:288:ARG:HD2	1:B:288:ARG:O	1.95	0.67
1:A:364:MET:HE1	2:A:501:RRG:H7	1.78	0.66
2:A:501:RRG:CAZ	2:A:501:RRG:H12	2.26	0.66
1:A:393:LEU:O	1:A:410:GLN:HB2	1.95	0.65
1:A:419:LEU:HA	1:A:422:LYS:CE	2.26	0.65
1:B:469:LEU:HB2	3:B:505:HOH:O	1.95	0.65
1:A:311:LEU:HD23	1:A:311:LEU:C	2.17	0.65
1:A:289:SER:OG	2:A:502:RRG:H16	1.96	0.65
1:A:430:GLN:HA	3:A:639:HOH:O	1.96	0.65
1:A:262:ILE:HG22	1:A:263:LYS:N	2.12	0.64
1:A:330:LEU:HD21	2:A:501:RRG:CAB	2.27	0.64
1:A:238:THR:C	1:A:240:LYS:N	2.51	0.64
1:A:326:ILE:HD13	2:A:502:RRG:CAK	2.26	0.64
1:B:236:ILE:HG21	3:B:567:HOH:O	1.97	0.63
1:A:270:LEU:HD13	1:A:271:GLN:N	2.13	0.63
1:A:249:ILE:HA	1:A:254:SER:HB3	1.80	0.63
1:B:459:THR:HG22	1:B:460:GLU:H	1.63	0.63
1:B:400:LEU:HD13	1:B:406:ILE:CD1	2.29	0.63
1:A:407:GLU:HG3	3:A:652:HOH:O	1.99	0.62
1:B:258:GLY:C	1:B:262:ILE:HG22	2.20	0.62
1:A:449:HIS:HE1	2:A:502:RRG:H15	1.65	0.62
1:A:348:MET:SD	1:A:353:LEU:HD21	2.39	0.62
1:B:290:VAL:HG21	1:B:473:TYR:CD1	2.35	0.62
1:A:404:LYS:N	1:A:405:PRO:HD2	2.15	0.61
1:B:449:HIS:CE1	1:B:453:LEU:HD22	2.35	0.61
1:A:265:LYS:HZ2	1:A:265:LYS:HB3	1.64	0.61
1:A:259:GLU:HA	1:A:264:PHE:HB2	1.82	0.61
1:A:463:MET:HE3	1:A:463:MET:HA	1.83	0.61
1:A:276:GLU:HG3	1:A:279:ILE:HG12	1.82	0.61
1:A:286:GLN:HB2	2:A:502:RRG:CAL	2.29	0.61
1:B:268:THR:HB	1:B:269:PRO:HD2	1.83	0.61
1:A:268:THR:H	1:A:269:PRO:CD	2.10	0.60
1:A:336:LYS:HG2	1:A:372:VAL:HG21	1.84	0.60
1:B:429:SER:HA	3:B:542:HOH:O	2.00	0.60
1:A:378:GLU:HG2	3:A:656:HOH:O	2.01	0.60
1:B:455:VAL:HG22	3:B:541:HOH:O	2.01	0.60

Continued on next page...

Continued from previous page...

Atom-1	Atom-2	Distance(Å)	Clash(Å)
1:A:448:GLU:HA	1:A:451:GLN:HE21	1.67	0.60
1:B:269:PRO:O	1:B:270:LEU:HD23	2.02	0.60
1:A:463:MET:HG3	3:A:607:HOH:O	2.02	0.60
1:B:411:ASP:O	1:B:415:GLN:HG3	2.01	0.60
1:A:212:ARG:HD2	3:A:626:HOH:O	2.01	0.59
1:A:286:GLN:HE22	1:A:465:LEU:HD12	1.66	0.59
1:B:275:LYS:HG3	1:B:276:GLU:H	1.67	0.59
1:A:282:PHE:CD2	2:A:501:RRG:H10	2.38	0.59
1:A:367:LYS:HE2	2:A:501:RRG:CAA	2.33	0.59
1:A:414:LEU:HB3	1:B:430:GLN:HG2	1.84	0.59
1:A:364:MET:SD	2:A:501:RRG:CAY	2.90	0.59
1:A:357:ARG:HG2	1:A:359:PRO:HD2	1.83	0.59
1:B:290:VAL:HG21	1:B:473:TYR:HD1	1.68	0.59
1:B:447:THR:O	1:B:450:VAL:HG22	2.03	0.58
1:B:452:LEU:O	1:B:456:ILE:HG12	2.03	0.58
1:B:459:THR:HG22	1:B:460:GLU:N	2.18	0.58
1:A:404:LYS:NZ	1:A:404:LYS:HB3	2.17	0.58
1:A:325:ILE:HD11	1:A:392:ILE:HG13	1.84	0.58
1:A:359:PRO:HG2	1:A:360:PHE:CD1	2.38	0.58
1:A:286:GLN:CD	2:A:502:RRG:H11	2.23	0.58
1:A:320:TYR:CE2	1:A:398:PRO:HD2	2.39	0.58
1:A:397:ARG:HB2	1:A:400:LEU:HD11	1.86	0.58
1:B:321:GLY:O	1:B:325:ILE:HG12	2.04	0.58
1:A:441:ASP:O	1:A:445:ILE:HG13	2.02	0.58
1:B:212:ARG:HD2	3:B:517:HOH:O	2.02	0.57
1:A:357:ARG:CG	1:A:359:PRO:HD2	2.34	0.57
1:A:367:LYS:HG2	2:A:501:RRG:H2	1.86	0.57
1:B:468:LEU:O	1:B:472:ILE:HG13	2.04	0.57
1:B:358:LYS:HB2	1:B:359:PRO:HD3	1.87	0.57
1:A:298:GLU:HA	1:A:298:GLU:OE1	2.04	0.57
1:A:365:GLU:N	1:A:366:PRO:HD2	2.19	0.57
1:B:267:ILE:HG12	1:B:268:THR:N	2.19	0.57
1:A:341:ILE:HB	2:A:501:RRG:H18	1.86	0.56
1:B:275:LYS:HG3	1:B:276:GLU:N	2.20	0.56
1:A:450:VAL:HG22	1:A:473:TYR:CE1	2.40	0.56
1:A:336:LYS:HG2	1:A:372:VAL:CG2	2.35	0.56
1:A:464:SER:O	1:A:465:LEU:HB2	2.05	0.56
1:B:450:VAL:HG23	1:B:451:GLN:N	2.20	0.56
1:A:403:VAL:C	1:A:405:PRO:HD2	2.25	0.56
1:A:323:HIS:NE2	2:A:502:RRG:OAC	2.38	0.56
1:B:257:MET:HG3	3:B:569:HOH:O	2.06	0.56
1:A:402:ASN:N	1:A:402:ASN:ND2	2.54	0.56

Continued on next page...

Continued from previous page...

Atom-1	Atom-2	Distance(Å)	Clash(Å)
1:B:374:PHE:HD1	1:B:438:LYS:HG2	1.70	0.56
1:A:274:SER:O	1:A:275:LYS:HB2	2.06	0.56
1:A:287:PHE:HA	1:A:290:VAL:HG12	1.88	0.56
1:A:250:TYR:HA	1:A:349:THR:OG1	2.05	0.55
1:B:342:SER:O	1:B:345:GLN:HG2	2.06	0.55
1:B:320:TYR:HB2	1:B:397:ARG:HD2	1.87	0.55
1:A:242:THR:HG22	1:A:245:SER:OG	2.06	0.55
1:B:273:GLN:OE1	1:B:273:GLN:N	2.39	0.55
1:A:394:SER:CB	1:A:397:ARG:HE	2.20	0.55
1:B:393:LEU:O	1:B:410:GLN:HB2	2.05	0.55
1:A:419:LEU:HD12	1:A:422:LYS:HE3	1.88	0.55
1:B:421:LEU:HD12	1:B:432:PHE:HA	1.88	0.55
2:A:501:RRG:CAT	2:A:501:RRG:H20	2.37	0.55
1:B:340:LEU:HD22	3:B:567:HOH:O	2.07	0.55
1:B:256:MET:HB2	3:B:569:HOH:O	2.07	0.55
1:A:394:SER:HA	1:A:410:GLN:OE1	2.07	0.55
1:A:414:LEU:CB	1:B:430:GLN:HG2	2.36	0.55
1:A:435:LEU:O	1:A:438:LYS:HB2	2.07	0.55
2:A:501:RRG:CAQ	2:A:501:RRG:H5	2.37	0.55
1:B:465:LEU:C	1:B:467:PRO:HD2	2.27	0.55
2:A:501:RRG:CAQ	2:A:501:RRG:CAZ	2.83	0.55
1:B:368:PHE:HD1	3:B:549:HOH:O	1.90	0.54
1:A:223:ILE:HA	3:A:653:HOH:O	2.07	0.54
1:B:222:TYR:HB2	1:B:299:TYR:CE1	2.43	0.54
1:B:355:SER:O	1:B:356:LEU:HG	2.07	0.54
1:A:271:GLN:OE1	1:A:272:GLU:HG2	2.07	0.54
1:A:407:GLU:N	3:A:652:HOH:O	2.41	0.54
1:B:293:VAL:CG2	1:B:322:VAL:HG11	2.37	0.54
1:B:400:LEU:HD13	1:B:406:ILE:HD12	1.89	0.54
1:A:220:ASP:O	1:A:224:LYS:HG3	2.09	0.53
1:A:255:LEU:O	1:A:255:LEU:HD23	2.07	0.53
1:B:212:ARG:HB3	1:B:212:ARG:CZ	2.38	0.53
1:B:309:LEU:O	1:B:314:GLN:NE2	2.38	0.53
1:B:295:GLU:HG2	3:B:509:HOH:O	2.08	0.53
1:B:308:ASN:HB2	3:B:540:HOH:O	2.08	0.53
1:A:257:MET:O	1:A:261:LYS:HG2	2.09	0.53
1:A:310:ASP:OD2	1:A:312:ASN:HB2	2.08	0.53
1:A:363:PHE:HB3	2:A:501:RRG:CAI	2.35	0.53
1:A:449:HIS:NE2	2:A:502:RRG:H15	2.24	0.52
1:B:419:LEU:HD11	1:B:423:LEU:HD11	1.91	0.52
1:A:386:ILE:HD12	1:A:420:GLN:HG2	1.90	0.52
1:A:264:PHE:CE2	2:A:501:RRG:H22	2.44	0.52

Continued on next page...

Continued from previous page...

Atom-1	Atom-2	Distance(Å)	Clash(Å)
1:A:288:ARG:HG3	2:A:501:RRG:CAT	2.39	0.52
1:B:336:LYS:HA	3:B:549:HOH:O	2.09	0.52
1:A:271:GLN:HB2	1:A:276:GLU:CA	2.36	0.52
1:A:311:LEU:O	1:A:311:LEU:HD23	2.09	0.52
1:A:336:LYS:HB2	3:A:622:HOH:O	2.09	0.52
1:A:282:PHE:CD2	2:A:502:RRG:CAB	2.90	0.52
1:A:440:THR:O	1:A:444:GLN:HG2	2.10	0.52
1:A:282:PHE:CD2	2:A:502:RRG:H7	2.45	0.52
1:A:264:PHE:CE2	2:A:501:RRG:CAE	2.93	0.51
1:A:271:GLN:NE2	1:A:272:GLU:N	2.57	0.51
1:A:364:MET:C	1:A:366:PRO:HD2	2.30	0.51
1:A:353:LEU:HD13	1:A:364:MET:HG3	1.92	0.51
1:A:271:GLN:HB3	1:A:280:ARG:HH11	1.72	0.51
1:B:454:GLN:HG3	1:B:455:VAL:N	2.25	0.51
1:B:448:GLU:HA	1:B:451:GLN:NE2	2.26	0.51
1:A:323:HIS:NE2	2:A:502:RRG:CAT	2.74	0.51
2:A:501:RRG:CAW	2:A:501:RRG:H5	2.41	0.51
1:A:259:GLU:OE1	1:A:264:PHE:HB3	2.10	0.51
1:A:468:LEU:O	1:A:472:ILE:HG13	2.10	0.51
1:B:250:TYR:CE1	1:B:251:ASP:HB2	2.46	0.50
1:B:461:THR:HG22	3:B:535:HOH:O	2.11	0.50
1:A:286:GLN:HE21	1:A:465:LEU:HD12	1.74	0.50
1:A:255:LEU:C	1:A:255:LEU:HD23	2.31	0.50
1:B:467:PRO:HG2	1:B:468:LEU:H	1.76	0.50
1:B:338:GLY:HA3	1:B:347:PHE:CZ	2.46	0.50
1:A:326:ILE:HG21	2:A:502:RRG:CAK	2.41	0.50
1:A:330:LEU:O	1:A:334:MET:HG3	2.11	0.50
1:B:340:LEU:HD13	3:B:567:HOH:O	2.11	0.50
1:B:267:ILE:HG12	1:B:268:THR:H	1.76	0.50
1:A:319:LYS:HD3	1:A:320:TYR:CE1	2.47	0.50
2:A:501:RRG:H20	2:A:501:RRG:OAC	2.11	0.50
1:A:286:GLN:CB	2:A:502:RRG:H11	2.39	0.50
1:B:334:MET:HG2	1:B:339:VAL:HB	1.94	0.50
1:A:360:PHE:HA	1:A:363:PHE:HD2	1.77	0.49
1:B:457:LYS:O	1:B:457:LYS:HG3	2.11	0.49
1:B:266:HIS:CG	1:B:267:ILE:N	2.80	0.49
1:A:285:CYS:SG	2:A:501:RRG:CAX	3.00	0.49
1:A:265:LYS:HZ3	1:A:265:LYS:HB3	1.74	0.49
1:A:267:ILE:HB	1:A:280:ARG:CZ	2.42	0.49
1:A:367:LYS:HG2	2:A:501:RRG:CAA	2.42	0.49
1:A:250:TYR:HB2	3:A:630:HOH:O	2.12	0.49
1:B:228:LEU:HD23	1:B:232:LYS:HD3	1.94	0.49

Continued on next page...

Continued from previous page...

Atom-1	Atom-2	Distance(Å)	Clash(Å)
1:A:367:LYS:HE2	2:A:501:RRG:H1	1.94	0.49
1:A:378:GLU:HA	3:A:610:HOH:O	2.13	0.49
1:A:438:LYS:O	1:A:441:ASP:HB2	2.13	0.49
1:B:275:LYS:CE	1:B:275:LYS:HA	2.41	0.49
1:A:440:THR:CB	1:B:440:THR:HG22	2.32	0.49
1:B:214:LEU:HD21	1:B:413:LEU:HD23	1.95	0.49
1:A:333:LEU:HB3	1:A:340:LEU:HB2	1.95	0.49
1:B:320:TYR:CB	1:B:397:ARG:HD2	2.42	0.49
1:A:442:LEU:O	1:A:446:VAL:HG23	2.13	0.48
1:B:364:MET:C	1:B:366:PRO:HD2	2.33	0.48
1:A:397:ARG:HB2	1:A:400:LEU:CD1	2.43	0.48
1:B:454:GLN:HG3	1:B:455:VAL:H	1.78	0.48
1:A:252:MET:O	1:A:256:MET:HB2	2.13	0.48
1:A:283:GLN:O	1:A:286:GLN:HB3	2.13	0.48
1:A:363:PHE:CZ	1:A:452:LEU:HD22	2.49	0.48
1:A:394:SER:HB2	1:A:397:ARG:HE	1.77	0.48
1:A:282:PHE:CB	2:A:502:RRG:H7	2.39	0.48
1:A:259:GLU:OE2	1:A:264:PHE:CD2	2.67	0.48
1:B:327:TYR:OH	1:B:449:HIS:CD2	2.62	0.48
1:A:271:GLN:HE22	1:A:272:GLU:CD	2.17	0.48
1:A:460:GLU:CB	1:A:463:MET:HB2	2.27	0.48
1:A:350:ARG:NH2	1:A:365:GLU:OE2	2.46	0.48
1:B:287:PHE:CD2	1:B:473:TYR:OH	2.64	0.48
1:B:272:GLU:HG2	1:B:272:GLU:O	2.14	0.48
1:B:402:ASN:OD1	1:B:405:PRO:CD	2.61	0.47
1:B:404:LYS:N	1:B:405:PRO:HD2	2.29	0.47
1:A:285:CYS:SG	2:A:501:RRG:CAQ	3.03	0.47
1:B:269:PRO:HA	1:B:280:ARG:HH22	1.79	0.47
1:A:270:LEU:HD22	1:A:271:GLN:N	2.27	0.47
1:A:286:GLN:CA	2:A:502:RRG:H12	2.44	0.47
1:B:267:ILE:HD13	1:B:280:ARG:HD2	1.96	0.47
1:A:395:GLY:C	1:A:397:ARG:N	2.64	0.47
1:B:450:VAL:HA	1:B:453:LEU:HB3	1.95	0.47
1:A:370:PHE:HA	1:A:373:LYS:NZ	2.29	0.47
1:A:259:GLU:HG3	1:A:268:THR:HG23	1.97	0.47
1:A:456:ILE:N	1:A:456:ILE:HD12	2.30	0.47
1:B:402:ASN:OD1	1:B:405:PRO:HD2	2.15	0.47
1:B:450:VAL:CG2	1:B:451:GLN:N	2.78	0.47
1:B:335:ASN:OD1	1:B:337:ASP:N	2.37	0.47
1:B:240:LYS:O	1:B:241:THR:C	2.53	0.47
3:A:648:HOH:O	1:B:430:GLN:HB2	2.15	0.47
1:A:363:PHE:CE2	2:A:502:RRG:H3	2.50	0.47

Continued on next page...

Continued from previous page...

Atom-1	Atom-2	Distance(Å)	Clash(Å)
1:B:262:ILE:HD11	1:B:345:GLN:HB2	1.97	0.47
1:A:393:LEU:HD12	1:A:409:ILE:HB	1.97	0.46
1:B:339:VAL:O	1:B:341:ILE:HD13	2.15	0.46
1:B:430:GLN:HG3	1:B:433:ALA:HB3	1.97	0.46
1:B:257:MET:HB3	3:B:506:HOH:O	2.15	0.46
1:A:323:HIS:CD2	2:A:502:RRG:H19	2.50	0.46
1:B:352:PHE:O	1:B:355:SER:O	2.34	0.46
1:A:319:LYS:O	1:A:472:ILE:HG23	2.15	0.46
1:A:349:THR:HB	1:A:352:PHE:H	1.81	0.46
1:A:464:SER:HB2	1:A:465:LEU:H	1.58	0.46
1:A:287:PHE:O	1:A:291:GLU:HG3	2.16	0.46
1:A:436:LEU:O	1:A:439:MET:HG3	2.16	0.46
1:A:363:PHE:CE2	1:A:452:LEU:HD22	2.51	0.45
1:A:393:LEU:O	1:A:410:GLN:OE1	2.33	0.45
1:B:340:LEU:O	1:B:341:ILE:HD12	2.16	0.45
1:A:243:ASP:HB2	3:A:609:HOH:O	2.15	0.45
1:B:272:GLU:C	1:B:274:SER:H	2.20	0.45
1:B:404:LYS:HB3	1:B:405:PRO:HD3	1.99	0.45
1:A:282:PHE:HB3	2:A:502:RRG:CAB	2.38	0.45
1:A:430:GLN:HG3	3:A:639:HOH:O	2.16	0.45
1:A:335:ASN:O	1:A:337:ASP:N	2.50	0.45
1:A:373:LYS:O	1:A:376:ALA:HB3	2.17	0.45
1:A:319:LYS:HZ1	1:A:474:LYS:HD3	1.81	0.45
1:B:318:LEU:HD12	1:B:318:LEU:HA	1.78	0.45
1:A:465:LEU:HD11	3:A:625:HOH:O	2.17	0.45
1:A:305:GLY:HA2	1:A:308:ASN:ND2	2.28	0.45
1:A:424:ASN:HB3	1:A:425:HIS:CD2	2.51	0.45
1:A:277:VAL:O	1:A:281:ILE:HG13	2.15	0.45
1:A:249:ILE:CG2	1:A:255:LEU:HB2	2.46	0.45
1:A:359:PRO:O	1:A:360:PHE:C	2.55	0.45
1:A:317:LEU:HD21	1:A:406:ILE:HD13	1.99	0.45
1:A:259:GLU:OE2	1:A:264:PHE:HD2	2.00	0.45
1:A:320:TYR:HB3	1:A:397:ARG:HH11	1.82	0.45
1:A:364:MET:SD	2:A:501:RRG:CAM	3.05	0.45
1:B:276:GLU:O	1:B:280:ARG:HD3	2.17	0.44
1:A:255:LEU:HD13	1:A:352:PHE:HZ	1.82	0.44
1:A:212:ARG:HG3	3:A:638:HOH:O	2.17	0.44
1:B:358:LYS:HE2	3:B:534:HOH:O	2.16	0.44
1:B:319:LYS:HE3	1:B:320:TYR:OH	2.17	0.44
1:B:448:GLU:HB2	3:B:531:HOH:O	2.18	0.44
1:B:330:LEU:HD23	1:B:330:LEU:HA	1.82	0.44
1:A:325:ILE:O	1:A:329:MET:HG3	2.17	0.44

Continued on next page...

Continued from previous page...

Atom-1	Atom-2	Distance(Å)	Clash(Å)
1:A:289:SER:O	1:A:293:VAL:HG23	2.16	0.44
1:B:404:LYS:HB3	1:B:405:PRO:CD	2.47	0.44
1:A:323:HIS:CD2	2:A:502:RRG:CAR	3.01	0.44
1:B:459:THR:CG2	1:B:460:GLU:H	2.28	0.44
1:A:268:THR:N	1:A:269:PRO:CD	2.77	0.44
1:A:271:GLN:C	1:A:276:GLU:HA	2.37	0.44
1:A:288:ARG:HH21	1:A:291:GLU:HB3	1.78	0.44
1:A:336:LYS:HE3	3:A:660:HOH:O	2.17	0.44
1:B:319:LYS:HE3	1:B:320:TYR:CZ	2.53	0.44
1:A:413:LEU:O	1:A:416:ALA:N	2.51	0.44
1:A:393:LEU:CD1	1:A:409:ILE:HG21	2.48	0.44
1:B:237:LEU:HB3	1:B:238:THR:H	1.52	0.44
1:B:364:MET:O	1:B:367:LYS:HG2	2.18	0.43
1:B:456:ILE:O	1:B:456:ILE:HG22	2.18	0.43
1:B:228:LEU:HD23	1:B:232:LYS:CG	2.48	0.43
1:A:426:PRO:C	1:A:428:SER:H	2.21	0.43
1:A:319:LYS:HD3	1:A:320:TYR:HE1	1.83	0.43
1:B:235:ALA:HB1	1:B:241:THR:HG21	1.99	0.43
1:A:270:LEU:C	1:A:270:LEU:HD13	2.39	0.43
1:A:358:LYS:N	1:A:359:PRO:HD2	2.33	0.43
1:A:364:MET:HB2	3:A:641:HOH:O	2.17	0.43
1:B:474:LYS:HE2	1:B:474:LYS:HB2	1.78	0.43
1:A:285:CYS:SG	2:A:501:RRG:CAW	3.07	0.43
1:B:262:ILE:O	1:B:264:PHE:N	2.51	0.43
1:A:262:ILE:CG2	1:A:263:LYS:H	2.29	0.43
1:B:348:MET:SD	1:B:353:LEU:HD21	2.58	0.43
1:A:448:GLU:HA	1:A:451:GLN:NE2	2.32	0.43
1:A:320:TYR:OH	1:A:398:PRO:HB2	2.19	0.43
1:B:466:HIS:N	1:B:467:PRO:CD	2.82	0.43
1:A:449:HIS:CD2	1:A:473:TYR:OH	2.71	0.43
2:A:501:RRG:CAQ	2:A:501:RRG:H4	2.36	0.43
1:A:317:LEU:HD22	1:A:392:ILE:O	2.18	0.43
1:B:313:ASP:O	1:B:317:LEU:HG	2.18	0.43
1:A:323:HIS:NE2	2:A:502:RRG:H18	2.34	0.43
1:B:336:LYS:O	1:B:350:ARG:HD2	2.19	0.43
1:A:214:LEU:O	1:A:218:LEU:HG	2.19	0.43
1:A:375:ASN:HA	3:A:616:HOH:O	2.19	0.43
1:A:271:GLN:CB	1:A:276:GLU:HA	2.38	0.42
2:A:501:RRG:CAJ	2:A:501:RRG:CAT	2.96	0.42
1:A:419:LEU:O	1:A:423:LEU:HG	2.18	0.42
1:B:278:ALA:HB1	1:B:360:PHE:CD2	2.54	0.42
1:A:286:GLN:OE1	2:A:502:RRG:H10	2.19	0.42

Continued on next page...

Continued from previous page...

Atom-1	Atom-2	Distance(Å)	Clash(Å)
1:B:288:ARG:CD	1:B:288:ARG:O	2.65	0.42
1:A:307:VAL:HG22	3:A:601:HOH:O	2.17	0.42
1:B:465:LEU:C	1:B:467:PRO:CD	2.87	0.42
1:B:450:VAL:O	1:B:453:LEU:N	2.50	0.42
1:A:335:ASN:C	1:A:337:ASP:H	2.23	0.42
1:A:270:LEU:CD1	1:A:273:GLN:H	2.27	0.42
1:A:350:ARG:NH2	3:A:660:HOH:O	2.49	0.42
1:B:237:LEU:O	1:B:239:GLY:O	2.37	0.42
1:A:411:ASP:O	1:A:415:GLN:HG3	2.19	0.42
1:A:359:PRO:CG	1:A:360:PHE:H	2.28	0.42
1:A:456:ILE:H	1:A:456:ILE:HD12	1.85	0.42
2:A:501:RRG:CAQ	2:A:501:RRG:CAB	2.98	0.42
1:A:286:GLN:HA	2:A:502:RRG:H12	2.02	0.42
1:B:392:ILE:HG12	3:B:543:HOH:O	2.19	0.41
1:B:230:LYS:O	1:B:230:LYS:HG2	2.19	0.41
1:A:360:PHE:O	1:A:362:ASP:N	2.53	0.41
1:A:456:ILE:O	1:A:460:GLU:HB2	2.20	0.41
1:B:226:PHE:HA	1:B:227:PRO:HD3	1.89	0.41
1:A:452:LEU:O	1:A:452:LEU:HD23	2.21	0.41
2:A:502:RRG:H13	2:A:502:RRG:H16	1.77	0.41
1:B:212:ARG:NH1	1:B:212:ARG:HB3	2.35	0.41
1:A:337:ASP:N	3:A:620:HOH:O	2.53	0.41
1:B:265:LYS:HG3	1:B:287:PHE:CE1	2.55	0.41
1:A:267:ILE:HG22	1:A:268:THR:N	2.35	0.41
1:A:268:THR:HB	1:A:269:PRO:CD	2.50	0.41
1:A:271:GLN:NE2	1:A:272:GLU:OE2	2.53	0.41
1:A:395:GLY:O	1:A:397:ARG:N	2.52	0.41
1:B:472:ILE:HG22	1:B:472:ILE:O	2.20	0.41
1:A:311:LEU:CD2	1:A:311:LEU:C	2.88	0.41
1:B:457:LYS:HZ3	1:B:461:THR:HB	1.86	0.41
2:A:501:RRG:CAJ	2:A:501:RRG:OAC	2.68	0.41
1:B:466:HIS:CD2	3:B:511:HOH:O	2.73	0.41
1:B:293:VAL:HG22	1:B:322:VAL:CG1	2.44	0.41
1:B:451:GLN:O	1:B:454:GLN:HG2	2.20	0.41
1:B:374:PHE:CD1	1:B:438:LYS:HG2	2.54	0.41
1:B:250:TYR:HE1	1:B:251:ASP:OD2	2.03	0.41
1:B:457:LYS:HD2	3:B:535:HOH:O	2.20	0.41
1:A:427:GLU:CD	1:A:427:GLU:N	2.74	0.41
1:A:380:ASP:C	1:A:380:ASP:OD1	2.59	0.41
1:A:357:ARG:CD	1:A:359:PRO:HD2	2.50	0.41
1:A:287:PHE:O	1:A:290:VAL:HG12	2.20	0.40
1:B:271:GLN:HE21	1:B:271:GLN:CA	2.20	0.40

Continued on next page...

Continued from previous page...

Atom-1	Atom-2	Distance(Å)	Clash(Å)
1:A:262:ILE:HG23	1:A:345:GLN:CD	2.41	0.40
1:B:265:LYS:HG3	1:B:287:PHE:HE1	1.85	0.40
1:B:426:PRO:HG2	1:B:427:GLU:H	1.85	0.40
1:A:463:MET:SD	2:A:502:RRG:H9	2.61	0.40
1:A:438:LYS:HD3	1:A:441:ASP:OD2	2.21	0.40
1:B:273:GLN:N	1:B:273:GLN:CD	2.74	0.40
1:B:353:LEU:C	1:B:355:SER:H	2.24	0.40
1:A:413:LEU:O	1:A:416:ALA:HB3	2.21	0.40
1:A:427:GLU:H	1:A:427:GLU:CD	2.25	0.40
1:B:380:ASP:C	1:B:380:ASP:OD1	2.60	0.40
1:B:392:ILE:HG22	1:B:393:LEU:HD22	2.03	0.40
1:A:467:PRO:O	1:A:471:GLU:HB2	2.21	0.40
1:A:267:ILE:HG22	1:A:268:THR:H	1.87	0.40
1:A:326:ILE:HG22	1:A:327:TYR:N	2.36	0.40
1:A:450:VAL:HG22	1:A:473:TYR:HE1	1.85	0.40
1:B:469:LEU:HA	1:B:469:LEU:HD22	1.91	0.40
1:A:212:ARG:HA	1:A:212:ARG:HD2	1.89	0.40

There are no symmetry-related clashes.

5.3 Torsion angles

5.3.1 Protein backbone ⓘ

In the following table, the Percentiles column shows the percent Ramachandran outliers of the chain as a percentile score with respect to all X-ray entries followed by that with respect to entries of similar resolution. The Analysed column shows the number of residues for which the backbone conformation was analysed, and the total number of residues.

Mol	Chain	Analysed	Favoured	Allowed	Outliers	Percentiles	
1	A	266/287 (93%)	234 (88%)	16 (6%)	16 (6%)	2	2
1	B	266/287 (93%)	218 (82%)	30 (11%)	18 (7%)	2	1
All	All	532/574 (93%)	452 (85%)	46 (9%)	34 (6%)	2	1

All (34) Ramachandran outliers are listed below:

Mol	Chain	Res	Type
1	A	269	PRO
1	A	309	LEU
1	A	359	PRO

Continued on next page...

Continued from previous page...

Mol	Chain	Res	Type
1	B	237	LEU
1	B	263	LYS
1	B	266	HIS
1	B	272	GLU
1	A	239	GLY
1	A	276	GLU
1	A	336	LYS
1	A	357	ARG
1	A	361	GLY
1	A	465	LEU
1	B	257	MET
1	B	261	LYS
1	B	357	ARG
1	B	394	SER
1	A	396	ASP
1	B	227	PRO
1	B	364	MET
1	B	365	GLU
1	B	467	PRO
1	A	244	LYS
1	A	268	THR
1	A	427	GLU
1	B	241	THR
1	B	244	LYS
1	A	240	LYS
1	A	401	LEU
1	B	275	LYS
1	A	360	PHE
1	B	240	LYS
1	B	466	HIS
1	B	358	LYS

5.3.2 Protein sidechains ⓘ

In the following table, the Percentiles column shows the percent sidechain outliers of the chain as a percentile score with respect to all X-ray entries followed by that with respect to entries of similar resolution. The Analysed column shows the number of residues for which the sidechain conformation was analysed, and the total number of residues.

Mol	Chain	Analysed	Rotameric	Outliers	Percentiles
1	A	241/258 (93%)	227 (94%)	14 (6%)	28 49

Continued on next page...

Continued from previous page...

Mol	Chain	Analysed	Rotameric	Outliers	Percentiles	
1	B	241/258 (93%)	227 (94%)	14 (6%)	28	49
All	All	482/516 (93%)	454 (94%)	28 (6%)	28	49

All (28) residues with a non-rotameric sidechain are listed below:

Mol	Chain	Res	Type
1	A	245	SER
1	A	271	GLN
1	A	287	PHE
1	A	288	ARG
1	A	349	THR
1	A	362	ASP
1	A	363	PHE
1	A	393	LEU
1	A	402	ASN
1	A	404	LYS
1	A	427	GLU
1	A	460	GLU
1	A	464	SER
1	A	474	LYS
1	B	210	ASP
1	B	221	SER
1	B	228	LEU
1	B	251	ASP
1	B	271	GLN
1	B	272	GLU
1	B	273	GLN
1	B	318	LEU
1	B	351	GLU
1	B	430	GLN
1	B	438	LYS
1	B	443	ARG
1	B	451	GLN
1	B	469	LEU

Some sidechains can be flipped to improve hydrogen bonding and reduce clashes. All (19) such sidechains are listed below:

Mol	Chain	Res	Type
1	A	271	GLN
1	A	286	GLN
1	A	308	ASN

Continued on next page...

Continued from previous page...

Mol	Chain	Res	Type
1	A	314	GLN
1	A	402	ASN
1	A	410	GLN
1	A	415	GLN
1	A	451	GLN
1	A	454	GLN
1	A	470	GLN
1	B	217	HIS
1	B	266	HIS
1	B	271	GLN
1	B	308	ASN
1	B	444	GLN
1	B	449	HIS
1	B	451	GLN
1	B	466	HIS
1	B	470	GLN

5.3.3 RNA ⓘ

There are no RNA chains in this entry.

5.4 Non-standard residues in protein, DNA, RNA chains ⓘ

There are no non-standard protein/DNA/RNA residues in this entry.

5.5 Carbohydrates ⓘ

There are no carbohydrates in this entry.

5.6 Ligand geometry ⓘ

2 ligands are modelled in this entry.

In the following table, the Counts columns list the number of bonds (or angles) for which Mogul statistics could be retrieved, the number of bonds (or angles) that are observed in the model and the number of bonds (or angles) that are defined in the chemical component dictionary. The Link column lists molecule types, if any, to which the group is linked. The Z score for a bond length (or angle) is the number of standard deviations the observed value is removed from the expected value. A bond length (or angle) with $|Z| > 2$ is considered an outlier worth inspection. RMSZ is the root-mean-square of all Z scores of the bond lengths (or angles).

Mol	Type	Chain	Res	Link	Bond lengths			Bond angles		
					Counts	RMSZ	# Z > 2	Counts	RMSZ	# Z > 2
2	RRG	A	501	-	29,29,29	1.19	1 (3%)	39,39,39	1.20	2 (5%)
2	RRG	A	502	-	29,29,29	1.17	1 (3%)	39,39,39	2.11	1 (2%)

In the following table, the Chirals column lists the number of chiral outliers, the number of chiral centers analysed, the number of these observed in the model and the number defined in the chemical component dictionary. Similar counts are reported in the Torsion and Rings columns. '-' means no outliers of that kind were identified.

Mol	Type	Chain	Res	Link	Chirals	Torsions	Rings
2	RRG	A	501	-	-	0/20/20/20	0/3/3/3
2	RRG	A	502	-	-	0/20/20/20	0/3/3/3

All (2) bond length outliers are listed below:

Mol	Chain	Res	Type	Atoms	Z	Observed(Å)	Ideal(Å)
2	A	501	RRG	CAX-CAW	-5.62	1.39	1.49
2	A	502	RRG	CAX-CAW	-5.52	1.39	1.49

All (3) bond angle outliers are listed below:

Mol	Chain	Res	Type	Atoms	Z	Observed(°)	Ideal(°)
2	A	502	RRG	CAV-OAS-CBA	-12.48	111.73	118.83
2	A	501	RRG	CAV-OAS-CBA	-5.71	115.58	118.83
2	A	501	RRG	OAS-CBA-CAT	-3.18	105.28	110.77

There are no chirality outliers.

There are no torsion outliers.

There are no ring outliers.

5.7 Other polymers ⓘ

There are no such residues in this entry.

5.8 Polymer linkage issues

There are no chain breaks in this entry.

6 Fit of model and data ⓘ

6.1 Protein, DNA and RNA chains ⓘ

In the following table, the column labelled ‘#RSRZ> 2’ contains the number (and percentage) of RSRZ outliers, followed by percent RSRZ outliers for the chain as percentile scores relative to all X-ray entries and entries of similar resolution. The OWAB column contains the minimum, median, 95th percentile and maximum values of the occupancy-weighted average B-factor per residue. The column labelled ‘Q< 0.9’ lists the number of (and percentage) of residues with an average occupancy less than 0.9.

Mol	Chain	Analysed	<RSRZ>	#RSRZ>2	OWAB(Å ²)	Q<0.9
1	A	268/287 (93%)	0.94	37 (13%) 4 3	25, 61, 92, 97	0
1	B	265/287 (92%)	0.95	42 (15%) 3 2	26, 51, 93, 100	0
All	All	533/574 (92%)	0.95	79 (14%) 3 3	25, 57, 93, 100	0

All (79) RSRZ outliers are listed below:

Mol	Chain	Res	Type	RSRZ
1	A	268	THR	12.1
1	B	270	LEU	11.4
1	B	465	LEU	9.9
1	A	269	PRO	9.2
1	B	464	SER	8.9
1	B	267	ILE	8.7
1	B	462	ASP	8.2
1	B	463	MET	7.9
1	B	268	THR	7.7
1	B	269	PRO	7.7
1	A	267	ILE	7.3
1	A	264	PHE	5.9
1	B	474	LYS	5.8
1	B	263	LYS	5.8
1	A	274	SER	5.8
1	B	271	GLN	5.7
1	A	239	GLY	5.7
1	B	273	GLN	5.6
1	A	240	LYS	5.4
1	B	274	SER	5.0
1	B	272	GLU	5.0
1	A	270	LEU	5.0
1	A	266	HIS	4.5
1	B	207	GLU	4.4

Continued on next page...

Continued from previous page...

Mol	Chain	Res	Type	RSRZ
1	B	241	THR	4.4
1	B	261	LYS	4.2
1	B	264	PHE	4.1
1	B	356	LEU	4.1
1	B	279	ILE	4.1
1	B	275	LYS	4.0
1	A	282	PHE	4.0
1	B	358	LYS	3.9
1	A	398	PRO	3.8
1	B	287	PHE	3.8
1	A	273	GLN	3.7
1	A	242	THR	3.6
1	B	265	LYS	3.4
1	A	422	LYS	3.3
1	A	461	THR	3.3
1	A	280	ARG	3.3
1	A	336	LYS	3.2
1	A	252	MET	3.1
1	A	265	LYS	3.0
1	B	461	THR	3.0
1	A	390	VAL	3.0
1	A	463	MET	2.9
1	B	288	ARG	2.9
1	A	388	ILE	2.9
1	A	358	LYS	2.8
1	B	360	PHE	2.8
1	A	285	CYS	2.8
1	B	451	GLN	2.8
1	B	452	LEU	2.8
1	B	238	THR	2.7
1	A	473	TYR	2.7
1	A	243	ASP	2.6
1	A	360	PHE	2.6
1	B	235	ALA	2.5
1	B	355	SER	2.5
1	B	454	GLN	2.5
1	B	240	LYS	2.5
1	B	455	VAL	2.4
1	B	266	HIS	2.4
1	B	387	PHE	2.4
1	A	429	SER	2.4
1	B	232	LYS	2.4

Continued on next page...

Continued from previous page...

Mol	Chain	Res	Type	RSRZ
1	B	427	GLU	2.3
1	A	408	ASP	2.3
1	B	281	ILE	2.2
1	A	454	GLN	2.2
1	B	276	GLU	2.2
1	B	282	PHE	2.2
1	A	262	ILE	2.1
1	A	387	PHE	2.1
1	A	348	MET	2.1
1	A	320	TYR	2.0
1	A	261	LYS	2.0
1	A	275	LYS	2.0
1	A	389	ALA	2.0

6.2 Non-standard residues in protein, DNA, RNA chains ⓘ

There are no non-standard protein/DNA/RNA residues in this entry.

6.3 Carbohydrates ⓘ

There are no carbohydrates in this entry.

6.4 Ligands ⓘ

In the following table, the Atoms column lists the number of modelled atoms in the group and the number defined in the chemical component dictionary. LLDF column lists the quality of electron density of the group with respect to its neighbouring residues in protein, DNA or RNA chains. The B-factors column lists the minimum, median, 95th percentile and maximum values of B factors of atoms in the group. The column labelled 'Q< 0.9' lists the number of atoms with occupancy less than 0.9.

Mol	Type	Chain	Res	Atoms	RSR	LLDF	B-factors(Å ²)	Q<0.9
2	RRG	A	502	27/27	0.40	2.67	79,82,87,89	0
2	RRG	A	501	27/27	0.42	1.47	78,81,83,83	0

6.5 Other polymers ⓘ

There are no such residues in this entry.