



Full wwPDB X-ray Structure Validation Report

Feb 28, 2014 – 06:48 PM GMT

PDB ID : 3E6P
Title : Crystal structure of human meizothrombin desF1
Authors : Papaconstantinou, M.E.; Gandhi, P.; Chen, Z.; Bah, A.; Di Cera, E.
Deposited on : 2008-08-15
Resolution : 2.10 Å(reported)

This is a full wwPDB validation report for a publicly released PDB entry.
We welcome your comments at validation@mail.wwpdb.org
A user guide is available at <http://wwpdb.org/ValidationPDFNotes.html>

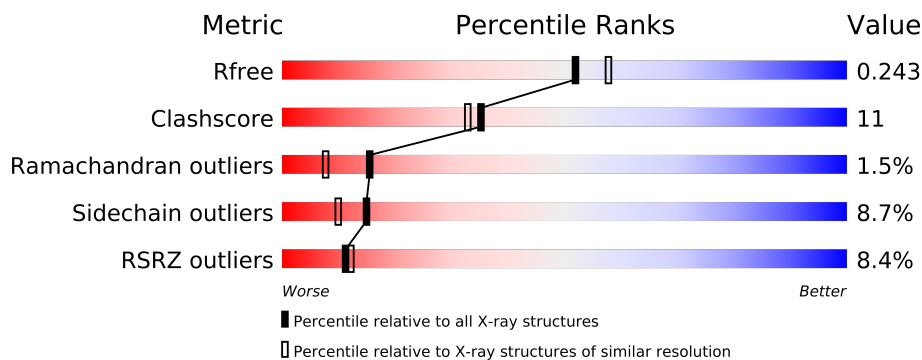
The following versions of software and data (see [references](#)) were used in the production of this report:

MolProbity : 4.02b-467
Mogul : 1.15 2013
Xtriage (Phenix) : dev-1323
EDS : stable22639
Percentile statistics : 21963
Refmac : 5.8.0049
CCP4 : 6.3.0 (Settle)
Ideal geometry (proteins) : Engh & Huber (2001)
Ideal geometry (DNA, RNA) : Parkinson et. al. (1996)
Validation Pipeline (wwPDB-VP) : stable22683

1 Overall quality at a glance

The reported resolution of this entry is 2.10 Å.

Percentile scores (ranging between 0-100) for global validation metrics of the entry are shown in the following graphic. The table shows the number of entries on which the scores are based.



Metric	Whole archive (#Entries)	Similar resolution (#Entries, resolution range(Å))
R_{free}	66092	3012 (2.10-2.10)
Clashscore	79885	3649 (2.10-2.10)
Ramachandran outliers	78287	3610 (2.10-2.10)
Sidechain outliers	78261	3611 (2.10-2.10)
RSRZ outliers	66119	3013 (2.10-2.10)

The table below summarises the geometric issues observed across the polymeric chains and their fit to the electron density. The red, orange, yellow and green segments on the lower bar indicate the fraction of residues that contain outliers for ≥ 3 , 2, 1 and 0 types of geometric quality criteria. The upper red bar (where present) indicates the fraction of residues that have poor fit to the electron density.

Mol	Chain	Length	Quality of chain
1	L	158	
2	H	259	

2 Entry composition i

There are 7 unique types of molecules in this entry. The entry contains 3483 atoms, of which 0 are hydrogen and 0 are deuterium.

In the tables below, the ZeroOcc column contains the number of atoms modelled with zero occupancy, the AltConf column contains the number of residues with at least one atom in alternate conformation and the Trace column contains the number of residues modelled with at most 2 atoms.

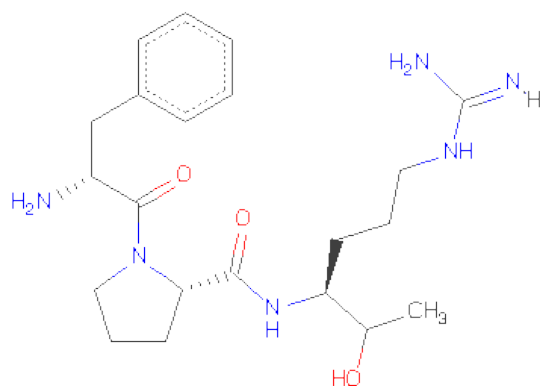
- Molecule 1 is a protein called Prothrombin.

Mol	Chain	Residues	Atoms					ZeroOcc	AltConf	Trace
1	L	150	Total	C	N	O	S	285	1	0
			1181	726	200	248	7			

- Molecule 2 is a protein called Prothrombin.

Mol	Chain	Residues	Atoms					ZeroOcc	AltConf	Trace
2	H	251	Total	C	N	O	S	0	0	0
			2030	1295	359	362	14			

- Molecule 3 is D-PHENYLALANYL-N-[(1S)-4-{[(Z)-AMINO(IMINO)METHYL]AMINO}-1-(CHLOROACETYL)BUTYL]-L-PROLINAMIDE (three-letter code: DFK) (formula: C₂₁H₃₄N₆O₃).



Mol	Chain	Residues	Atoms				ZeroOcc	AltConf
3	H	1	Total	C	N	O	0	0
			30	21	6	3		

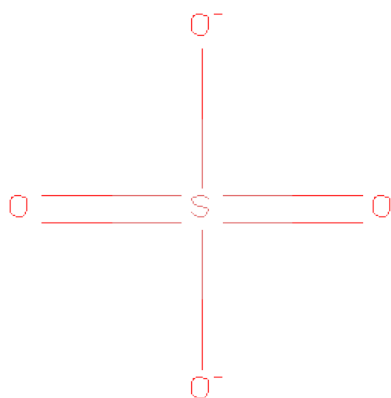
- Molecule 4 is SODIUM ION (three-letter code: NA) (formula: Na).

Mol	Chain	Residues	Atoms		ZeroOcc	AltConf
4	H	1	Total	Na	0	0
			1	1		

- Molecule 5 is a polymer of unknown type called SUGAR (2-MER).

Mol	Chain	Residues	Atoms				ZeroOcc	AltConf
5	H	2	Total	C	N	O	0	0
			28	16	2	10		

- Molecule 6 is SULFATE ION (three-letter code: SO4) (formula: O₄S).



Mol	Chain	Residues	Atoms			ZeroOcc	AltConf
6	L	1	Total	O	S	0	0
			5	4	1		

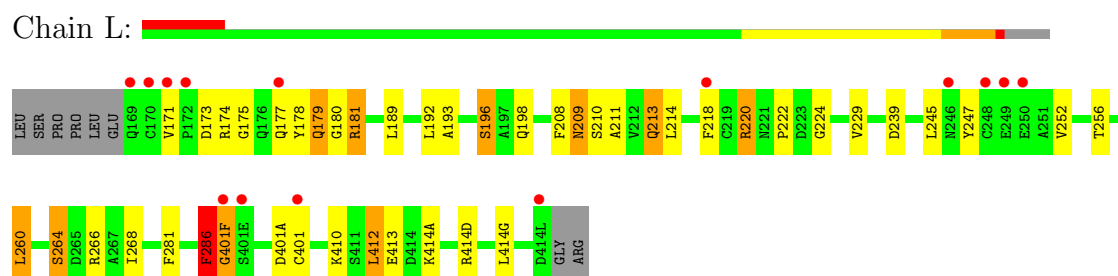
- Molecule 7 is water.

Mol	Chain	Residues	Atoms		ZeroOcc	AltConf
7	L	58	Total	O	0	0
			58	58		
7	H	150	Total	O	0	0
			150	150		

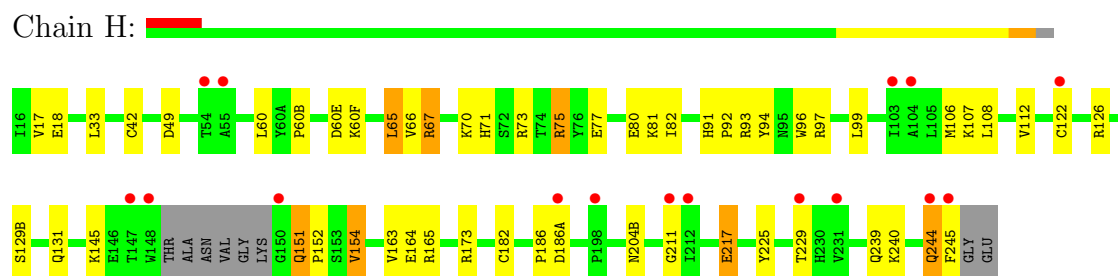
3 Residue-property plots

These plots are drawn for all protein, RNA and DNA chains in the entry. The first graphic for a chain summarises the proportions of errors displayed in the second graphic. The second graphic shows the sequence view annotated by issues in geometry and electron density. Residues are color-coded according to the number of geometric quality criteria for which they contain at least one outlier: green = 0, yellow = 1, orange = 2 and red = 3 or more. A red dot above a residue indicates a poor fit to the electron density ($RSRZ > 2$). Stretches of 2 or more consecutive residues without any outlier are shown as a green connector. Residues present in the sample, but not in the model, are shown in grey.

• Molecule 1: Prothrombin



• Molecule 2: Prothrombin



4 Data and refinement statistics

Property	Value	Source
Space group	P 41 21 2	Depositor
Cell constants a, b, c, α , β , γ	121.34Å 121.34Å 100.20Å 90.00° 90.00° 90.00°	Depositor
Resolution (Å)	32.58 – 2.10 32.59 – 2.10	Depositor EDS
% Data completeness (in resolution range)	92.2 (32.58-2.10) 92.2 (32.59-2.10)	Depositor EDS
R_{merge}	0.11	Depositor
R_{sym}	(Not available)	Depositor
$\langle I/\sigma(I) \rangle$ ¹	1.84 (at 2.10Å)	Xtriage
Refinement program	REFMAC 5.4.0066	Depositor
R, R_{free}	0.211 , 0.249 0.209 , 0.243	Depositor DCC
R_{free} test set	2026 reflections (5.27%)	DCC
Wilson B-factor (Å ²)	38.3	Xtriage
Anisotropy	0.023	Xtriage
Bulk solvent k_{sol} (e/Å ³), B_{sol} (Å ²)	0.36 , 47.8	EDS
Estimated twinning fraction	No twinning to report.	Xtriage
L-test for twinning	$\langle L \rangle = 0.47$, $\langle L^2 \rangle = 0.30$	Xtriage
Outliers	0 of 40455 reflections	Xtriage
F_o, F_c correlation	0.95	EDS
Total number of atoms	3483	wwPDB-VP
Average B, all atoms (Å ²)	43.0	wwPDB-VP

Xtriage's analysis on translational NCS is as follows: *The largest off-origin peak in the Patterson function is 4.02% of the height of the origin peak. No significant pseudotranslation is detected.*

¹Intensities estimated from amplitudes.

5 Model quality

5.1 Standard geometry

Bond lengths and bond angles in the following residue types are not validated in this section: NA, NAG, DFK, SO4

The Z score for a bond length (or angle) is the number of standard deviations the observed value is removed from the expected value. A bond length (or angle) with $|Z| > 5$ is considered an outlier worth inspection. RMSZ is the root-mean-square of all Z scores of the bond lengths (or angles).

Mol	Chain	Bond lengths		Bond angles	
		RMSZ	$\# Z > 5$	RMSZ	$\# Z > 5$
1	L	0.77	1/1205 (0.1%)	0.96	4/1630 (0.2%)
2	H	0.88	1/2082 (0.0%)	0.95	7/2813 (0.2%)
All	All	0.84	2/3287 (0.1%)	0.96	11/4443 (0.2%)

Chiral center outliers are detected by calculating the chiral volume of a chiral center and verifying if the center is modelled as a planar moiety or with the opposite hand. A planarity outlier is detected by checking planarity of atoms in a peptide group, atoms in a mainchain group or atoms of a sidechain that are expected to be planar.

Mol	Chain	#Chirality outliers	#Planarity outliers
1	L	0	2
2	H	0	2
All	All	0	4

All (2) bond length outliers are listed below:

Mol	Chain	Res	Type	Atoms	Z	Observed(Å)	Ideal(Å)
2	H	217	GLU	C-N	14.24	1.58	1.33
1	L	286	PHE	C-N	5.95	1.43	1.33

All (11) bond angle outliers are listed below:

Mol	Chain	Res	Type	Atoms	Z	Observed(°)	Ideal(°)
2	H	217	GLU	O-C-N	-15.01	97.68	123.20
1	L	286	PHE	CA-C-O	-13.29	92.20	120.10
1	L	286	PHE	CB-CA-C	-10.92	88.56	110.40
2	H	67	ARG	NE-CZ-NH1	-10.58	115.01	120.30
1	L	286	PHE	CA-C-N	10.02	136.25	116.20
2	H	75	ARG	NE-CZ-NH2	-6.94	116.83	120.30
2	H	65	LEU	CA-CB-CG	6.63	130.55	115.30

Continued on next page...

Continued from previous page...

Mol	Chain	Res	Type	Atoms	Z	Observed(°)	Ideal(°)
1	L	286	PHE	N-CA-C	-5.90	95.07	111.00
2	H	67	ARG	NE-CZ-NH2	5.65	123.12	120.30
2	H	75	ARG	NE-CZ-NH1	5.33	122.97	120.30
2	H	217	GLU	CA-C-N	5.13	126.46	116.20

There are no chirality outliers.

All (4) planarity outliers are listed below:

Mol	Chain	Res	Type	Group
2	H	217	GLU	Mainchain,Peptide
1	L	286	PHE	Mainchain,Peptide

5.2 Close contacts ⓘ

In the following table, the Non-H and H(model) columns list the number of non-hydrogen atoms and hydrogen atoms in the chain respectively. The H(added) column lists the number of hydrogens added by MolProbity. The Clashes column lists the number of clashes within the asymmetric unit, and the number in parentheses is this value normalized per 1000 atoms of the molecule in the chain. The Symm-Clashes column gives symmetry related clashes, in the same way as for the Clashes column.

Mol	Chain	Non-H	H(model)	H(added)	Clashes	Symm-Clashes
1	L	1181	0	1068	30	0
2	H	2030	0	2001	34	0
3	H	30	0	30	1	0
4	H	1	0	0	0	0
5	H	28	0	25	2	0
6	L	5	0	0	0	0
7	H	150	0	0	5	0
7	L	58	0	0	3	0
All	All	3483	0	3124	62	0

Clashscore is defined as the number of clashes calculated for the entry per 1000 atoms (including hydrogens) of the entry. The overall clashscore for this entry is 11.

All (62) close contacts within the same asymmetric unit are listed below.

Atom-1	Atom-2	Distance(Å)	Clash(Å)
2:H:173:ARG:HD3	7:H:1144:HOH:O	1.60	1.02
2:H:239:GLN:HG2	7:H:1136:HOH:O	1.71	0.90
1:L:179:GLN:HA	1:L:220:ARG:HH21	1.45	0.81
2:H:81:LYS:HG2	2:H:112:VAL:HG23	1.64	0.80

Continued on next page...

Continued from previous page...

Atom-1	Atom-2	Distance(Å)	Clash(Å)
1:L:401:CYS:O	2:H:122:CYS:SG	2.40	0.79
1:L:174:ARG:NH1	1:L:224:GLY:O	2.17	0.78
2:H:145:LYS:HE2	7:H:1143:HOH:O	1.83	0.77
1:L:193:ALA:O	1:L:196:SER:HB3	1.85	0.75
2:H:186:PRO:O	2:H:186(A):ASP:HB2	1.89	0.72
2:H:81:LYS:HG2	2:H:112:VAL:CG2	2.19	0.71
1:L:213:GLN:NE2	7:L:1204:HOH:O	2.21	0.68
2:H:75:ARG:NH2	7:H:1061:HOH:O	2.27	0.66
1:L:192:LEU:HD21	1:L:198:GLN:HE21	1.61	0.64
2:H:67:ARG:HD2	2:H:80:GLU:OE1	2.01	0.60
1:L:229:VAL:HG21	1:L:245:LEU:CD1	2.31	0.60
1:L:401:CYS:C	2:H:122:CYS:SG	2.81	0.58
1:L:220:ARG:HH11	1:L:220:ARG:CG	2.17	0.57
1:L:179:GLN:CA	1:L:220:ARG:HH21	2.17	0.56
2:H:186:PRO:O	2:H:186(A):ASP:CB	2.54	0.56
1:L:229:VAL:HG22	1:L:247:TYR:OH	2.06	0.56
2:H:70:LYS:HE2	2:H:77:GLU:OE2	2.06	0.55
1:L:414(G):LEU:CD1	7:L:1138:HOH:O	2.55	0.55
2:H:165:ARG:HD3	7:H:1070:HOH:O	2.07	0.54
1:L:181:ARG:HH11	1:L:181:ARG:HG2	1.73	0.54
2:H:94:TYR:CZ	2:H:96:TRP:HB3	2.43	0.53
2:H:60:LEU:HD11	5:H:304:NAG:H82	1.92	0.52
1:L:229:VAL:CG2	1:L:245:LEU:HD12	2.41	0.51
1:L:414(G):LEU:HD13	7:L:1138:HOH:O	2.11	0.51
5:H:304:NAG:H62	5:H:305:NAG:N2	2.26	0.50
2:H:164:GLU:CD	2:H:164:GLU:H	2.15	0.49
1:L:229:VAL:HG21	1:L:245:LEU:HD11	1.95	0.48
1:L:208:PHE:CD1	1:L:222:PRO:HB2	2.49	0.48
2:H:211:GLY:HA2	2:H:229:THR:O	2.14	0.48
2:H:33:LEU:HD11	2:H:106:MET:CE	2.44	0.47
1:L:410:LYS:HB3	1:L:412:LEU:HD22	1.96	0.47
2:H:60(B):PRO:HG2	2:H:96:TRP:CZ2	2.50	0.47
1:L:239:ASP:HA	2:H:97:ARG:HH12	1.80	0.46
2:H:73:ARG:HD3	2:H:152:PRO:O	2.15	0.46
1:L:178:TYR:CZ	1:L:180:GLY:HA3	2.51	0.46
2:H:73:ARG:CZ	2:H:151:GLN:HB3	2.46	0.45
1:L:218:PHE:HB2	1:L:220:ARG:HH12	1.80	0.45
2:H:65:LEU:HG	2:H:82:ILE:CG2	2.46	0.45
3:H:301:DFK:CD1	3:H:301:DFK:HD32	2.47	0.44
2:H:107:LYS:HE3	2:H:245:PHE:CE1	2.52	0.44
1:L:171:VAL:CG1	1:L:175:GLY:HA2	2.48	0.43
2:H:17:VAL:HG12	2:H:18:GLU:HG2	2.00	0.43

Continued on next page...

Continued from previous page...

Atom-1	Atom-2	Distance(Å)	Clash(Å)
1:L:209:ASN:HD22	1:L:210:SER:N	2.16	0.43
2:H:240:LYS:O	2:H:244:GLN:HB2	2.18	0.43
1:L:218:PHE:HB2	1:L:220:ARG:NH1	2.34	0.43
2:H:66:VAL:HG21	2:H:108:LEU:HD21	2.01	0.43
1:L:220:ARG:HH11	1:L:220:ARG:HG2	1.83	0.43
2:H:93:ARG:HH11	2:H:93:ARG:HD3	1.63	0.42
2:H:70:LYS:CE	2:H:77:GLU:OE2	2.67	0.42
1:L:181:ARG:NH1	1:L:181:ARG:HG2	2.35	0.41
2:H:163:VAL:HG21	2:H:225:TYR:CD1	2.55	0.41
1:L:220:ARG:CG	1:L:220:ARG:NH1	2.83	0.41
2:H:71:HIS:CD2	2:H:154:VAL:HG22	2.56	0.41
1:L:401(F):GLY:HA3	2:H:49:ASP:OD1	2.21	0.41
1:L:173:ASP:OD2	1:L:177:GLN:NE2	2.46	0.41
2:H:91:HIS:HA	2:H:92:PRO:HD2	1.93	0.41
2:H:65:LEU:HG	2:H:82:ILE:HG23	2.03	0.40
1:L:414(D):ARG:HB2	1:L:414(D):ARG:HE	1.73	0.40

There are no symmetry-related clashes.

5.3 Torsion angles

5.3.1 Protein backbone ⓘ

In the following table, the Percentiles column shows the percent Ramachandran outliers of the chain as a percentile score with respect to all X-ray entries followed by that with respect to entries of similar resolution. The Analysed column shows the number of residues for which the backbone conformation was analysed, and the total number of residues.

Mol	Chain	Analysed	Favoured	Allowed	Outliers	Percentiles	
1	L	149/158 (94%)	118 (79%)	25 (17%)	6 (4%)	5	1
2	H	247/259 (95%)	233 (94%)	14 (6%)	0	100	100
All	All	396/417 (95%)	351 (89%)	39 (10%)	6 (2%)	15	8

All (6) Ramachandran outliers are listed below:

Mol	Chain	Res	Type
1	L	268	ILE
1	L	256	THR
1	L	401(F)	GLY
1	L	211	ALA

Continued on next page...

Continued from previous page...

Mol	Chain	Res	Type
1	L	260	LEU
1	L	264	SER

5.3.2 Protein sidechains ⓘ

In the following table, the Percentiles column shows the percent sidechain outliers of the chain as a percentile score with respect to all X-ray entries followed by that with respect to entries of similar resolution. The Analysed column shows the number of residues for which the sidechain conformation was analysed, and the total number of residues.

Mol	Chain	Analysed	Rotameric	Outliers	Percentiles	
1	L	125/131 (95%)	107 (86%)	18 (14%)	5	2
2	H	219/225 (97%)	207 (94%)	12 (6%)	30	26
All	All	344/356 (97%)	314 (91%)	30 (9%)	15	10

All (30) residues with a non-rotameric sidechain are listed below:

Mol	Chain	Res	Type
1	L	179	GLN
1	L	181	ARG
1	L	189	LEU
1	L	196	SER
1	L	209	ASN
1	L	213	GLN
1	L	214	LEU
1	L	220	ARG
1	L	252	VAL
1	L	260	LEU
1	L	264	SER
1	L	266	ARG
1	L	281	PHE
1	L	286	PHE
1	L	401(A)	ASP
1	L	412	LEU
1	L	413	GLU
1	L	414(A)	LYS
2	H	42	CYS
2	H	60(E)	ASP
2	H	60(F)	LYS
2	H	99	LEU
2	H	126	ARG

Continued on next page...

Continued from previous page...

Mol	Chain	Res	Type
2	H	129(B)	SER
2	H	131	GLN
2	H	151	GLN
2	H	154	VAL
2	H	182	CYS
2	H	204(B)	ASN
2	H	244	GLN

Some sidechains can be flipped to improve hydrogen bonding and reduce clashes. All (5) such sidechains are listed below:

Mol	Chain	Res	Type
1	L	198	GLN
1	L	209	ASN
1	L	213	GLN
2	H	204(B)	ASN
2	H	209	GLN

5.3.3 RNA ⓘ

There are no RNA chains in this entry.

5.4 Non-standard residues in protein, DNA, RNA chains ⓘ

There are no non-standard protein/DNA/RNA residues in this entry.

5.5 Carbohydrates ⓘ

2 carbohydrates are modelled in this entry.

In the following table, the Counts columns list the number of bonds (or angles) for which Mogul statistics could be retrieved, the number of bonds (or angles) that are observed in the model and the number of bonds (or angles) that are defined in the chemical component dictionary. The Link column lists molecule types, if any, to which the group is linked. The Z score for a bond length (or angle) is the number of standard deviations the observed value is removed from the expected value. A bond length (or angle) with $|Z| > 2$ is considered an outlier worth inspection. RMSZ is the root-mean-square of all Z scores of the bond lengths (or angles).

Mol	Type	Chain	Res	Link	Bond lengths			Bond angles		
					Counts	RMSZ	$\# Z > 2$	Counts	RMSZ	$\# Z > 2$
5	NAG	H	304	2,5	12,14,15	0.58	0	15,19,21	1.10	1 (6%)

Mol	Type	Chain	Res	Link	Bond lengths			Bond angles		
					Counts	RMSZ	# Z > 2	Counts	RMSZ	# Z > 2
5	NAG	H	305	5	12,14,15	0.64	0	15,19,21	1.80	3 (20%)

In the following table, the Chirals column lists the number of chiral outliers, the number of chiral centers analysed, the number of these observed in the model and the number defined in the chemical component dictionary. Similar counts are reported in the Torsion and Rings columns. '-' means no outliers of that kind were identified.

Mol	Type	Chain	Res	Link	Chirals	Torsions	Rings
5	NAG	H	304	2,5	-	0/6/23/26	0/1/1/1
5	NAG	H	305	5	-	0/6/23/26	0/1/1/1

There are no bond length outliers.

All (4) bond angle outliers are listed below:

Mol	Chain	Res	Type	Atoms	Z	Observed(°)	Ideal(°)
5	H	305	NAG	O5-C5-C6	4.69	111.90	106.98
5	H	305	NAG	C3-C2-N2	-3.57	106.32	111.76
5	H	305	NAG	O5-C5-C4	-2.76	107.14	110.65
5	H	304	NAG	O5-C5-C4	2.01	113.20	110.65

There are no chirality outliers.

There are no torsion outliers.

There are no ring outliers.

5.6 Ligand geometry ⓘ

Of 3 ligands modelled in this entry, 1 is monoatomic - leaving 2 for Mogul analysis.

In the following table, the Counts columns list the number of bonds (or angles) for which Mogul statistics could be retrieved, the number of bonds (or angles) that are observed in the model and the number of bonds (or angles) that are defined in the chemical component dictionary. The Link column lists molecule types, if any, to which the group is linked. The Z score for a bond length (or angle) is the number of standard deviations the observed value is removed from the expected value. A bond length (or angle) with $|Z| > 2$ is considered an outlier worth inspection. RMSZ is the root-mean-square of all Z scores of the bond lengths (or angles).

Mol	Type	Chain	Res	Link	Bond lengths			Bond angles		
					Counts	RMSZ	# Z > 2	Counts	RMSZ	# Z > 2
3	DFK	H	301	2	31,31,31	0.70	0	41,41,41	1.24	6 (14%)
6	SO4	L	303	-	4,4,4	0.32	0	6,6,6	0.17	0

In the following table, the Chirals column lists the number of chiral outliers, the number of chiral centers analysed, the number of these observed in the model and the number defined in the chemical component dictionary. Similar counts are reported in the Torsion and Rings columns. '-' means no outliers of that kind were identified.

Mol	Type	Chain	Res	Link	Chirals	Torsions	Rings
3	DFK	H	301	2	-	0/31/41/41	0/2/2/2
6	SO4	L	303	-	-	0/0/0/0	0/0/0/0

There are no bond length outliers.

All (6) bond angle outliers are listed below:

Mol	Chain	Res	Type	Atoms	Z	Observed(°)	Ideal(°)
3	H	301	DFK	CG2-CB2-CA2	2.95	110.42	104.26
3	H	301	DFK	CB3-CG3-CD4	-2.60	105.27	111.94
3	H	301	DFK	O3-C3-CA3	-2.48	102.66	108.64
3	H	301	DFK	CB3-CA3-N3	-2.47	106.66	109.92
3	H	301	DFK	CB2-CA2-C2	-2.04	107.49	111.15
3	H	301	DFK	CH2-C3-CA3	2.01	118.09	113.66

There are no chirality outliers.

There are no torsion outliers.

There are no ring outliers.

5.7 Other polymers ⓘ

There are no such residues in this entry.

5.8 Polymer linkage issues

There are no chain breaks in this entry.

6 Fit of model and data ⓘ

6.1 Protein, DNA and RNA chains ⓘ

In the following table, the column labelled ‘#RSRZ> 2’ contains the number (and percentage) of RSRZ outliers, followed by percent RSRZ outliers for the chain as percentile scores relative to all X-ray entries and entries of similar resolution. The OWAB column contains the minimum, median, 95th percentile and maximum values of the occupancy-weighted average B-factor per residue. The column labelled ‘Q< 0.9’ lists the number of (and percentage) of residues with an average occupancy less than 0.9.

Mol	Chain	Analysed	<RSRZ>	#RSRZ>2	OWAB(Å ²)	Q<0.9
1	L	114/158 (72%)	0.75	14 (12%) 5 5	35, 53, 80, 113	0
2	H	251/259 (96%)	0.35	16 (6%) 19 21	26, 38, 53, 64	0
All	All	365/417 (87%)	0.48	30 (8%) 11 13	26, 42, 65, 113	0

All (30) RSRZ outliers are listed below:

Mol	Chain	Res	Type	RSRZ
2	H	148	TRP	6.8
1	L	170	CYS	5.2
1	L	250	GLU	5.1
1	L	169	GLN	5.0
1	L	249	GLU	4.5
2	H	245	PHE	4.3
2	H	122	CYS	4.1
1	L	248	CYS	4.0
1	L	177	GLN	4.0
2	H	244	GLN	3.7
1	L	401(F)	GLY	3.6
2	H	212	ILE	3.3
1	L	218	PHE	3.2
2	H	211	GLY	3.0
1	L	246	ASN	3.0
1	L	401	CYS	2.9
2	H	229	THR	2.9
1	L	171	VAL	2.9
2	H	54	THR	2.8
1	L	414(L)	ASP	2.8
1	L	401(E)	SER	2.8
1	L	172	PRO	2.6
2	H	198	PRO	2.5
2	H	55	ALA	2.4

Continued on next page...

Continued from previous page...

Mol	Chain	Res	Type	RSRZ
2	H	104	ALA	2.4
2	H	103	ILE	2.2
2	H	231	VAL	2.1
2	H	186(A)	ASP	2.0
2	H	150	GLY	2.0
2	H	147	THR	2.0

6.2 Non-standard residues in protein, DNA, RNA chains ⓘ

There are no non-standard protein/DNA/RNA residues in this entry.

6.3 Carbohydrates ⓘ

In the following table, the Atoms column lists the number of modelled atoms in the group and the number defined in the chemical component dictionary. LLDF column lists the quality of electron density of the group with respect to its neighbouring residues in protein, DNA or RNA chains. The B-factors column lists the minimum, median, 95th percentile and maximum values of B factors of atoms in the group. The column labelled 'Q< 0.9' lists the number of atoms with occupancy less than 0.9.

Mol	Type	Chain	Res	Atoms	RSR	LLDF	B-factors(Å ²)	Q<0.9
5	NAG	H	304	14/15	0.20	-	75,80,86,95	0
5	NAG	H	305	14/15	0.53	-	100,104,106,107	0

6.4 Ligands ⓘ

In the following table, the Atoms column lists the number of modelled atoms in the group and the number defined in the chemical component dictionary. LLDF column lists the quality of electron density of the group with respect to its neighbouring residues in protein, DNA or RNA chains. The B-factors column lists the minimum, median, 95th percentile and maximum values of B factors of atoms in the group. The column labelled 'Q< 0.9' lists the number of atoms with occupancy less than 0.9.

Mol	Type	Chain	Res	Atoms	RSR	LLDF	B-factors(Å ²)	Q<0.9
3	DFK	H	301	30/30	0.09	-	27,32,35,38	0
6	SO4	L	303	5/5	0.12	-	92,92,93,94	0
4	NA	H	302	1/1	0.04	-	36,36,36,36	0

6.5 Other polymers ⓘ

There are no such residues in this entry.