



Full wwPDB X-ray Structure Validation Report ⓘ

Feb 28, 2014 – 07:13 AM GMT

PDB ID : 4E7B
Title : E. cloacae MurA in complex with UDP-glucose
Authors : Zhu, J.-Y.; Yang, Y.; Schonbrunn, E.
Deposited on : 2012-03-16
Resolution : 2.00 Å(reported)

This is a full wwPDB validation report for a publicly released PDB entry.
We welcome your comments at validation@mail.wwpdb.org
A user guide is available at <http://wwpdb.org/ValidationPDFNotes.html>

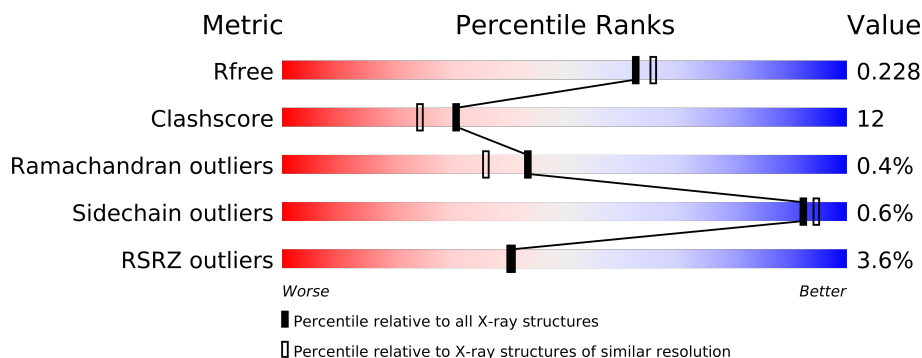
The following versions of software and data (see [references](#)) were used in the production of this report:

MolProbity : 4.02b-467
Mogul : 1.15 2013
Xtriage (Phenix) : dev-1323
EDS : stable22639
Percentile statistics : 21963
Refmac : 5.8.0049
CCP4 : 6.3.0 (Settle)
Ideal geometry (proteins) : Engh & Huber (2001)
Ideal geometry (DNA, RNA) : Parkinson et. al. (1996)
Validation Pipeline (wwPDB-VP) : stable22683

1 Overall quality at a glance

The reported resolution of this entry is 2.00 Å.

Percentile scores (ranging between 0-100) for global validation metrics of the entry are shown in the following graphic. The table shows the number of entries on which the scores are based.



Metric	Whole archive (#Entries)	Similar resolution (#Entries, resolution range(Å))
R_{free}	66092	4888 (2.00-2.00)
Clashscore	79885	6188 (2.00-2.00)
Ramachandran outliers	78287	6102 (2.00-2.00)
Sidechain outliers	78261	6100 (2.00-2.00)
RSRZ outliers	66119	4890 (2.00-2.00)

The table below summarises the geometric issues observed across the polymeric chains and their fit to the electron density. The red, orange, yellow and green segments on the lower bar indicate the fraction of residues that contain outliers for ≥ 3 , 2, 1 and 0 types of geometric quality criteria. The upper red bar (where present) indicates the fraction of residues that have poor fit to the electron density.

Mol	Chain	Length	Quality of chain
1	A	419	
1	B	419	
1	C	419	
1	D	419	

The following table lists non-polymeric compounds that are outliers for geometric or electron-density-fit criteria:

Mol	Type	Chain	Res	Geometry	Electron density
2	EDO	A	501	-	X
2	EDO	A	502	-	X
2	EDO	A	503	-	X
2	EDO	A	504	-	X

Continued on next page...

Continued from previous page...

Mol	Type	Chain	Res	Geometry	Electron density
2	EDO	A	505	-	X
2	EDO	A	507	-	X
2	EDO	A	508	-	X
2	EDO	A	509	-	X
2	EDO	A	510	-	X
2	EDO	A	511	-	X
2	EDO	B	501	-	X
2	EDO	B	503	-	X
2	EDO	B	507	-	X
2	EDO	B	508	-	X
2	EDO	B	509	-	X
2	EDO	B	510	-	X
2	EDO	B	511	-	X
2	EDO	B	512	-	X
2	EDO	B	513	-	X
2	EDO	B	514	-	X
2	EDO	B	515	-	X
2	EDO	C	501	-	X
2	EDO	C	502	-	X
2	EDO	C	503	-	X
2	EDO	C	504	-	X
2	EDO	C	507	-	X
2	EDO	C	509	-	X
2	EDO	C	510	-	X
2	EDO	C	511	-	X
2	EDO	D	501	-	X
2	EDO	D	503	-	X
2	EDO	D	504	-	X
3	ACT	C	513	-	X
4	UPG	A	513	-	X
4	UPG	C	514	-	X

2 Entry composition

There are 5 unique types of molecules in this entry. The entry contains 14068 atoms, of which 0 are hydrogen and 0 are deuterium.

In the tables below, the ZeroOcc column contains the number of atoms modelled with zero occupancy, the AltConf column contains the number of residues with at least one atom in alternate conformation and the Trace column contains the number of residues modelled with at most 2 atoms.

- Molecule 1 is a protein called UDP-N-acetylglucosamine1-carboxyvinyltransferase.

Mol	Chain	Residues	Atoms					ZeroOcc	AltConf	Trace
1	A	419	Total	C	N	O	S	0	7	0
			3165	1992	554	604	15			
1	B	419	Total	C	N	O	S	0	2	0
			3149	1982	554	599	14			
1	C	419	Total	C	N	O	S	0	3	0
			3156	1983	558	601	14			
1	D	419	Total	C	N	O	S	0	4	0
			3158	1986	557	601	14			

There are 4 discrepancies between the modelled and reference sequences:

Chain	Residue	Modelled	Actual	Comment	Reference
A	67	IAS	ASN	SEE REMARK 999	UNP P33038
B	67	IAS	ASN	SEE REMARK 999	UNP P33038
C	67	IAS	ASN	SEE REMARK 999	UNP P33038
D	67	IAS	ASN	SEE REMARK 999	UNP P33038

- Molecule 2 is 1,2-ETHANEDIOL (three-letter code: EDO) (formula: C₂H₆O₂).



Mol	Chain	Residues	Atoms			ZeroOcc	AltConf
2	A	1	Total	C	O	0	0
			4	2	2		
2	A	1	Total	C	O	0	0
			4	2	2		
2	A	1	Total	C	O	0	0
			4	2	2		
2	A	1	Total	C	O	0	0
			4	2	2		
2	A	1	Total	C	O	0	0
			4	2	2		
2	B	1	Total	C	O	0	0
			4	2	2		
2	A	1	Total	C	O	0	0
			4	2	2		
2	B	1	Total	C	O	0	0
			4	2	2		
2	A	1	Total	C	O	0	0
			4	2	2		
2	B	1	Total	C	O	0	0
			4	2	2		
2	A	1	Total	C	O	0	0
			4	2	2		

Continued on next page...

Continued from previous page...

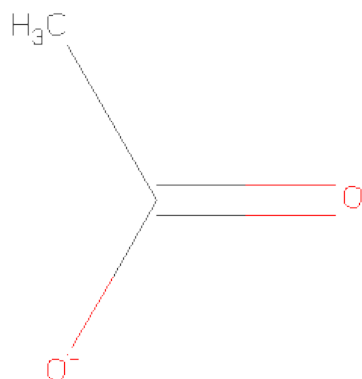
Mol	Chain	Residues	Atoms			ZeroOcc	AltConf
2	B	1	Total 4	C 2	O 2	0	0
2	A	1	Total 4	C 2	O 2	0	0
2	B	1	Total 4	C 2	O 2	0	0
2	B	1	Total 4	C 2	O 2	0	0
2	B	1	Total 4	C 2	O 2	0	0
2	B	1	Total 4	C 2	O 2	0	0
2	B	1	Total 4	C 2	O 2	0	0
2	B	1	Total 4	C 2	O 2	0	0
2	C	1	Total 4	C 2	O 2	0	0
2	C	1	Total 4	C 2	O 2	0	0
2	C	1	Total 4	C 2	O 2	0	0
2	C	1	Total 4	C 2	O 2	0	0
2	C	1	Total 4	C 2	O 2	0	0
2	C	1	Total 4	C 2	O 2	0	0
2	B	1	Total 4	C 2	O 2	0	0
2	C	1	Total 4	C 2	O 2	0	0
2	B	1	Total 4	C 2	O 2	0	0
2	C	1	Total 4	C 2	O 2	0	0
2	B	1	Total 4	C 2	O 2	0	0
2	C	1	Total 4	C 2	O 2	0	0
2	B	1	Total 4	C 2	O 2	0	0

Continued on next page...

Continued from previous page...

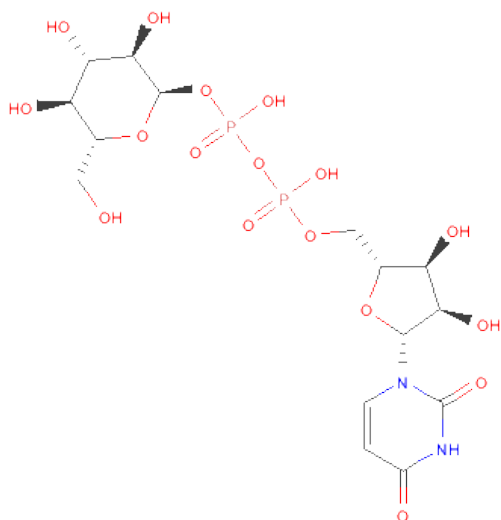
Mol	Chain	Residues	Atoms			ZeroOcc	AltConf
2	C	1	Total	C	O	0	0
			4	2	2		
2	C	1	Total	C	O	0	0
			4	2	2		
2	C	1	Total	C	O	0	0
			4	2	2		
2	D	1	Total	C	O	0	0
			4	2	2		
2	D	1	Total	C	O	0	0
			4	2	2		
2	D	1	Total	C	O	0	0
			4	2	2		

- Molecule 3 is ACETATE ION (three-letter code: ACT) (formula: $C_2H_3O_2$).



Mol	Chain	Residues	Atoms			ZeroOcc	AltConf
3	A	1	Total	C	O	0	0
			4	2	2		
3	C	1	Total	C	O	0	0
			4	2	2		

- Molecule 4 is URIDINE-5'-DIPHOSPHATE-GLUCOSE (three-letter code: UPG) (formula: $C_{15}H_{24}N_2O_{17}P_2$).



Mol	Chain	Residues	Atoms					ZeroOcc	AltConf
4	A	1	Total	C	N	O	P	0	0
			36	15	2	17	2		
4	B	1	Total	C	N	O	P	0	0
			36	15	2	17	2		
4	C	1	Total	C	N	O	P	0	0
			36	15	2	17	2		
4	D	1	Total	C	N	O	P	0	0
			36	15	2	17	2		

- Molecule 5 is water.

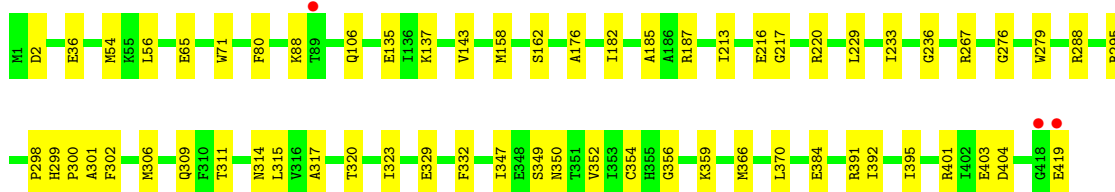
Mol	Chain	Residues	Atoms		ZeroOcc	AltConf
5	A	334	Total	O	0	0
			334	334		
5	B	299	Total	O	0	0
			299	299		
5	C	284	Total	O	0	0
			284	284		
5	D	203	Total	O	0	0
			203	203		

3 Residue-property plots

These plots are drawn for all protein, RNA and DNA chains in the entry. The first graphic for a chain summarises the proportions of errors displayed in the second graphic. The second graphic shows the sequence view annotated by issues in geometry and electron density. Residues are color-coded according to the number of geometric quality criteria for which they contain at least one outlier: green = 0, yellow = 1, orange = 2 and red = 3 or more. A red dot above a residue indicates a poor fit to the electron density ($RSRZ > 2$). Stretches of 2 or more consecutive residues without any outlier are shown as a green connector. Residues present in the sample, but not in the model, are shown in grey.

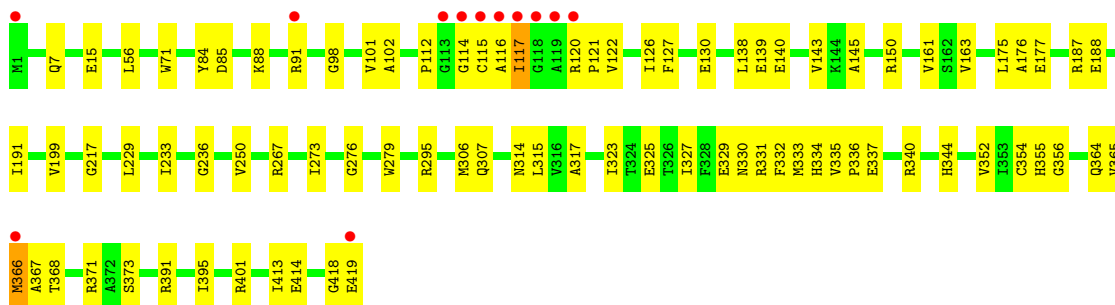
- Molecule 1: UDP-N-acetylglucosamine1-carboxyvinyltransferase

Chain A: 



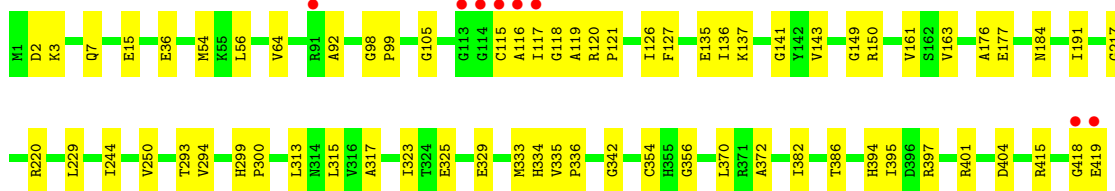
- Molecule 1: UDP-N-acetylglucosamine1-carboxyvinyltransferase

Chain B: 



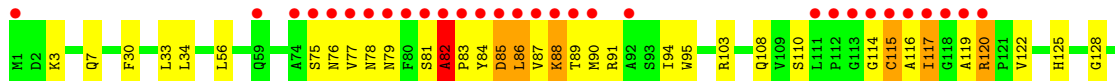
- Molecule 1: UDP-N-acetylglucosamine1-carboxyvinyltransferase

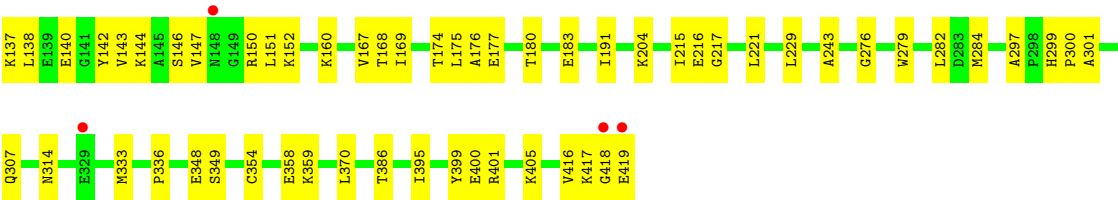
Chain C: 



- Molecule 1: UDP-N-acetylglucosamine1-carboxyvinyltransferase

Chain D: 





4 Data and refinement statistics

Property	Value	Source
Space group	P 21 21 21	Depositor
Cell constants a, b, c, α , β , γ	78.11Å 103.22Å 218.95Å 90.00° 90.00° 90.00°	Depositor
Resolution (Å)	19.96 – 2.00 19.96 – 2.00	Depositor EDS
% Data completeness (in resolution range)	98.4 (19.96-2.00) 98.6 (19.96-2.00)	Depositor EDS
R_{merge}	0.04	Depositor
R_{sym}	0.04	Depositor
$\langle I/\sigma(I) \rangle$ ¹	3.37 (at 2.01Å)	Xtriage
Refinement program	CNS 1.3	Depositor
R, R_{free}	0.186 , 0.226 0.188 , 0.228	Depositor DCC
R_{free} test set	1184 reflections (1.00%)	DCC
Wilson B-factor (Å ²)	24.6	Xtriage
Anisotropy	0.140	Xtriage
Bulk solvent k_{sol} (e/Å ³), B_{sol} (Å ²)	0.36 , 43.9	EDS
Estimated twinning fraction	No twinning to report.	Xtriage
L-test for twinning	$\langle L \rangle = 0.44$, $\langle L^2 \rangle = 0.27$	Xtriage
Outliers	0 of 118332 reflections	Xtriage
F_o, F_c correlation	0.95	EDS
Total number of atoms	14068	wwPDB-VP
Average B, all atoms (Å ²)	29.0	wwPDB-VP

Xtriage's analysis on translational NCS is as follows: *The largest off-origin peak in the Patterson function is 3.58% of the height of the origin peak. No significant pseudotranslation is detected.*

¹Intensities estimated from amplitudes.

5 Model quality

5.1 Standard geometry

Bond lengths and bond angles in the following residue types are not validated in this section: UPG, EDO, IAS, ACT

The Z score for a bond length (or angle) is the number of standard deviations the observed value is removed from the expected value. A bond length (or angle) with $|Z| > 5$ is considered an outlier worth inspection. RMSZ is the root-mean-square of all Z scores of the bond lengths (or angles).

Mol	Chain	Bond lengths		Bond angles	
		RMSZ	$\# Z > 5$	RMSZ	$\# Z > 5$
1	A	0.49	0/3229	0.85	1/4372 (0.0%)
1	B	0.51	0/3193	0.87	1/4325 (0.0%)
1	C	0.48	0/3204	0.83	1/4338 (0.0%)
1	D	0.48	0/3210	0.87	1/4346 (0.0%)
All	All	0.49	0/12836	0.85	4/17381 (0.0%)

Chiral center outliers are detected by calculating the chiral volume of a chiral center and verifying if the center is modelled as a planar moiety or with the opposite hand. A planarity outlier is detected by checking planarity of atoms in a peptide group, atoms in a mainchain group or atoms of a sidechain that are expected to be planar.

Mol	Chain	#Chirality outliers	#Planarity outliers
1	D	0	2

There are no bond length outliers.

All (4) bond angle outliers are listed below:

Mol	Chain	Res	Type	Atoms	Z	Observed(°)	Ideal(°)
1	C	143	VAL	N-CA-C	-5.49	96.18	111.00
1	D	82	ALA	C-N-CD	-5.25	109.06	120.60
1	B	366	MET	N-CA-C	5.23	125.12	111.00
1	A	143	VAL	N-CA-C	-5.02	97.45	111.00

There are no chirality outliers.

All (2) planarity outliers are listed below:

Mol	Chain	Res	Type	Group
1	D	86	LEU	Peptide
1	D	88	LYS	Peptide

5.2 Close contacts ⓘ

In the following table, the Non-H and H(model) columns list the number of non-hydrogen atoms and hydrogen atoms in the chain respectively. The H(added) column lists the number of hydrogens added by MolProbity. The Clashes column lists the number of clashes within the asymmetric unit, and the number in parentheses is this value normalized per 1000 atoms of the molecule in the chain. The Symm-Clashes column gives symmetry related clashes, in the same way as for the Clashes column.

Mol	Chain	Non-H	H(model)	H(added)	Clashes	Symm-Clashes
1	A	3165	0	3238	64	0
1	B	3149	0	3226	92	0
1	C	3156	0	3228	59	0
1	D	3158	0	3234	103	0
2	A	44	0	66	13	0
2	B	60	0	90	22	0
2	C	48	0	72	8	0
2	D	16	0	24	1	0
3	A	4	0	3	0	0
3	C	4	0	3	0	0
4	A	36	0	21	2	0
4	B	36	0	21	1	0
4	C	36	0	22	1	0
4	D	36	0	21	1	0
5	A	334	0	0	7	0
5	B	299	0	0	6	0
5	C	284	0	0	4	0
5	D	203	0	0	5	0
All	All	14068	0	13269	310	0

Clashscore is defined as the number of clashes calculated for the entry per 1000 atoms (including hydrogens) of the entry. The overall clashscore for this entry is 12.

All (310) close contacts within the same asymmetric unit are listed below.

Atom-1	Atom-2	Distance(Å)	Clash(Å)
1:D:86:LEU:HD13	1:D:88:LYS:NZ	1.50	1.27
1:B:366:MET:HE1	1:B:391:ARG:HH21	1.01	1.11
1:D:119:ALA:O	1:D:120:ARG:HB2	1.47	1.09
1:B:366:MET:CE	1:B:391:ARG:HH21	1.66	1.07
1:A:329:GLU:HG2	5:A:781:HOH:O	1.57	1.03
1:B:88:LYS:HE3	2:B:512:EDO:H21	1.40	1.00
1:D:180:THR:HB	1:D:215[B]:ILE:HG23	1.45	0.98
1:D:86:LEU:HD13	1:D:88:LYS:HZ3	0.98	0.98
1:B:295:ARG:HH21	2:B:504:EDO:H11	1.28	0.97

Continued on next page...

Continued from previous page...

Atom-1	Atom-2	Distance(Å)	Clash(Å)
1:B:344:HIS:HA	2:B:507:EDO:H22	1.47	0.96
1:A:187:ARG:HD3	2:A:503:EDO:H21	1.49	0.95
1:B:366:MET:HE1	1:B:391:ARG:NH2	1.84	0.91
1:C:418:GLY:O	1:C:419:GLU:OXT	1.91	0.89
1:A:216:GLU:HG3	5:A:769:HOH:O	1.73	0.89
1:B:126:ILE:HD12	1:B:143:VAL:HG21	1.55	0.87
1:D:152:LYS:NZ	1:D:152:LYS:HB3	1.91	0.85
1:D:86:LEU:CD1	1:D:88:LYS:NZ	2.39	0.85
1:C:105:GLY:HA3	2:C:511:EDO:H12	1.58	0.83
1:A:359:LYS:HD3	1:A:384:GLU:HB2	1.59	0.82
1:A:182[B]:ILE:CG2	1:A:213:ILE:HB	2.11	0.81
1:D:3:LYS:NZ	1:D:419:GLU:HA	1.96	0.81
1:D:30:PHE:HE2	1:D:56:LEU:HD22	1.42	0.81
1:A:80:PHE:HB2	2:A:502:EDO:H22	1.63	0.80
1:D:86:LEU:HD13	1:D:88:LYS:HZ1	1.47	0.80
1:D:30:PHE:CE2	1:D:56:LEU:HD22	2.16	0.80
1:A:182[B]:ILE:HG22	1:A:213:ILE:HB	1.63	0.79
1:D:77:VAL:CG1	1:D:77:VAL:O	2.29	0.79
1:B:15:GLU:HG2	1:B:250:VAL:HB	1.62	0.79
1:A:187:ARG:HH11	2:A:503:EDO:H12	1.46	0.78
1:A:301:ALA:HB1	2:A:510:EDO:H21	1.63	0.78
1:D:180:THR:HB	1:D:215[B]:ILE:CG2	2.15	0.77
1:A:288:ARG:HD3	5:A:756:HOH:O	1.83	0.77
1:D:119:ALA:O	1:D:120:ARG:CB	2.30	0.76
1:C:149:GLY:H	2:C:511:EDO:H21	1.50	0.75
1:A:302:PHE:H	2:A:510:EDO:H22	1.51	0.73
1:B:233:ILE:HA	1:B:306:MET:CE	2.19	0.72
1:A:366:MET:HG3	1:A:391:ARG:HD2	1.72	0.72
1:A:302:PHE:H	2:A:510:EDO:C2	2.04	0.70
1:C:418:GLY:O	1:C:419:GLU:C	2.30	0.70
1:A:187:ARG:NH1	2:A:503:EDO:H12	2.07	0.69
1:D:77:VAL:HG13	1:D:77:VAL:O	1.91	0.69
1:B:120:ARG:NH2	1:D:348:GLU:OE1	2.24	0.69
1:D:418:GLY:O	1:D:419:GLU:HB2	1.94	0.68
1:A:187:ARG:HH11	2:A:503:EDO:C1	2.05	0.68
1:B:325:GLU:HG3	5:B:788:HOH:O	1.93	0.67
1:B:120:ARG:HG3	4:B:516:UPG:O6'	1.94	0.67
1:D:128:GLY:HA3	1:D:169:ILE:HD11	1.77	0.66
1:A:36:GLU:OE1	1:A:220:ARG:NE	2.28	0.66
1:D:3:LYS:HZ1	1:D:419:GLU:HA	1.60	0.65
1:D:152:LYS:HZ3	1:D:152:LYS:HB3	1.62	0.65
1:B:366:MET:HE3	1:B:391:ARG:HE	1.61	0.65

Continued on next page...

Continued from previous page...

Atom-1	Atom-2	Distance(Å)	Clash(Å)
1:B:116:ALA:O	1:B:117:ILE:HG13	1.97	0.65
1:D:34:LEU:HD23	1:D:103:ARG:HB2	1.78	0.64
1:D:103:ARG:HH11	1:D:103:ARG:HG3	1.62	0.64
1:D:122:VAL:HG12	1:D:122:VAL:O	1.98	0.64
1:D:120:ARG:HB3	5:D:800:HOH:O	1.98	0.63
1:B:368:THR:HG22	5:B:764:HOH:O	1.99	0.63
1:C:342:GLY:HA3	2:C:510:EDO:H12	1.80	0.62
1:D:90:MET:HG3	1:D:110:SER:HB2	1.80	0.62
1:B:366:MET:CE	1:B:391:ARG:NH2	2.50	0.62
1:D:147:VAL:HG11	1:D:151:LEU:CD1	2.29	0.62
1:B:130:GLU:HG2	1:C:116:ALA:CB	2.30	0.62
1:B:355:HIS:CG	2:B:515:EDO:H11	2.35	0.61
2:A:509:EDO:H11	4:A:513:UPG:H6'1	1.82	0.61
1:D:86:LEU:CD1	1:D:88:LYS:HZ1	2.07	0.61
1:B:101[A]:VAL:HG21	1:B:145:ALA:HB3	1.82	0.61
1:D:128:GLY:HA3	1:D:169:ILE:CD1	2.31	0.61
1:B:187:ARG:HH12	2:B:514:EDO:C1	2.14	0.61
1:D:94:ILE:CD1	1:D:122:VAL:HG11	2.30	0.60
1:B:116:ALA:O	1:B:117:ILE:CB	2.48	0.60
1:A:403:GLU:HB3	5:A:848:HOH:O	2.00	0.60
1:D:83:PRO:O	1:D:84:TYR:CD1	2.54	0.60
1:B:88:LYS:CE	2:B:512:EDO:H21	2.25	0.60
1:D:116:ALA:O	1:D:117:ILE:HB	2.02	0.59
1:B:413:ILE:O	1:B:414:GLU:HG3	2.02	0.59
1:B:401:ARG:NH1	1:B:401:ARG:HB2	2.17	0.59
1:C:116:ALA:C	1:C:118:GLY:H	2.06	0.59
1:D:152:LYS:HB3	1:D:152:LYS:HZ2	1.64	0.58
1:D:370:LEU:HD11	1:D:399:TYR:CD1	2.38	0.58
1:C:105:GLY:CA	2:C:511:EDO:H12	2.32	0.58
1:C:394:HIS:HB2	5:C:613:HOH:O	2.02	0.58
1:B:127:PHE:HB3	1:C:120:ARG:HE	1.69	0.58
1:D:138:LEU:CD2	1:D:143:VAL:HG22	2.34	0.58
1:A:359:LYS:CD	1:A:384:GLU:HB2	2.30	0.58
1:C:7:GLN:HE22	1:C:386:THR:HG23	1.68	0.58
1:C:92:ALA:HA	2:C:508:EDO:H21	1.85	0.58
1:A:158:MET:CG	1:A:182[B]:ILE:HD11	2.34	0.57
1:D:90:MET:HB3	1:D:108:GLN:O	2.03	0.57
1:A:401:ARG:HH11	1:A:404:ASP:HB2	1.68	0.57
1:A:347:ILE:CD1	1:A:352:VAL:HG22	2.35	0.57
1:D:140:GLU:HG3	2:D:502:EDO:O1	2.04	0.57
1:B:188:GLU:HB2	1:B:191:ILE:CD1	2.35	0.57
1:C:150:ARG:HB2	1:C:177:GLU:HG3	1.87	0.57

Continued on next page...

Continued from previous page...

Atom-1	Atom-2	Distance(Å)	Clash(Å)
1:B:130:GLU:CD	1:C:116:ALA:HA	2.25	0.56
1:A:162:SER:HB2	4:A:513:UPG:H5C2	1.86	0.56
1:B:91:ARG:HB3	2:B:505:EDO:H21	1.87	0.56
1:B:295:ARG:NH2	2:B:504:EDO:H11	2.09	0.56
1:D:114:GLY:O	1:D:115:CYS:SG	2.62	0.56
1:A:158:MET:HG2	1:A:182[B]:ILE:HD11	1.86	0.56
1:D:94:ILE:HG12	1:D:122:VAL:HG13	1.86	0.56
1:D:147:VAL:HG11	1:D:151:LEU:HD12	1.86	0.56
1:A:329:GLU:OE1	1:C:329:GLU:OE1	2.23	0.56
1:C:149:GLY:O	2:C:511:EDO:H11	2.05	0.56
1:A:236:GLY:HA3	1:A:306[B]:MET:SD	2.45	0.56
1:A:135:GLU:OE2	1:A:137:LYS:HD2	2.05	0.56
1:C:161:VAL:HG23	1:C:184[A]:ASN:HD21	1.71	0.55
1:D:103:ARG:NH1	1:D:103:ARG:HG3	2.19	0.55
1:B:307:GLN:HE22	1:B:334:HIS:CE1	2.25	0.55
1:C:293:THR:HB	1:D:183:GLU:OE1	2.07	0.54
1:D:152:LYS:CB	1:D:152:LYS:NZ	2.69	0.54
1:C:334:HIS:HB3	1:C:372:ALA:HB1	1.90	0.54
1:D:77:VAL:HG12	1:D:77:VAL:O	2.07	0.54
1:B:116:ALA:O	1:B:117:ILE:HB	2.07	0.54
1:D:94:ILE:HG12	1:D:122:VAL:CG1	2.38	0.54
1:A:135:GLU:CD	1:D:137:LYS:HE3	2.28	0.54
1:A:370:LEU:HD12	1:A:395:ILE:HA	1.89	0.53
1:C:2:ASP:OD2	1:C:415:ARG:HD3	2.07	0.53
1:D:276:GLY:HA3	1:D:279:TRP:CE2	2.43	0.53
1:D:276:GLY:HA3	1:D:279:TRP:NE1	2.22	0.53
1:B:91:ARG:HD3	2:B:505:EDO:C2	2.39	0.53
1:C:370:LEU:HD12	1:C:395:ILE:HA	1.91	0.53
1:C:99:PRO:HD3	5:C:704:HOH:O	2.08	0.53
1:B:340:ARG:HH22	1:B:365:VAL:HA	1.73	0.53
1:C:98:GLY:HA3	5:C:704:HOH:O	2.09	0.53
1:D:400:GLU:O	1:D:405:LYS:HE3	2.08	0.53
1:B:114:GLY:O	1:B:115:CYS:HB2	2.09	0.53
1:D:89:THR:HG22	1:D:91:ARG:H	1.73	0.53
1:B:187:ARG:HH12	2:B:514:EDO:H12	1.72	0.52
5:A:645:HOH:O	2:B:508:EDO:H11	2.08	0.52
1:D:215[B]:ILE:HD11	5:D:638:HOH:O	2.08	0.52
1:D:370:LEU:HD11	1:D:399:TYR:HD1	1.74	0.52
1:D:90:MET:CB	1:D:108:GLN:O	2.58	0.52
1:D:175:LEU:HD21	1:D:221:LEU:HG	1.91	0.52
1:C:3:LYS:HZ1	1:C:419:GLU:CG	2.23	0.52
1:D:416:VAL:HG12	1:D:417:LYS:N	2.25	0.52

Continued on next page...

Continued from previous page...

Atom-1	Atom-2	Distance(Å)	Clash(Å)
1:D:150:ARG:CZ	1:D:177:GLU:HG3	2.40	0.52
1:B:233:ILE:HA	1:B:306:MET:HE2	1.93	0.51
1:B:150:ARG:HH21	1:B:175:LEU:HB3	1.76	0.51
1:C:333:MET:O	1:C:336:PRO:HD2	2.09	0.51
1:C:315:LEU:HD23	1:C:354:CYS:HB3	1.93	0.51
1:A:182[B]:ILE:HG23	1:A:185:ALA:HB2	1.93	0.51
1:B:98:GLY:HA3	5:B:756:HOH:O	2.10	0.51
1:D:370:LEU:CD1	1:D:395:ILE:HA	2.41	0.51
1:B:71:TRP:HB3	2:B:511:EDO:H22	1.92	0.51
1:B:327:ILE:O	1:B:329:GLU:HG3	2.10	0.51
1:B:116:ALA:O	1:B:117:ILE:CG1	2.59	0.50
1:D:3:LYS:CE	1:D:419:GLU:HA	2.41	0.50
1:D:174:THR:HA	1:D:215[B]:ILE:HD11	1.93	0.50
1:A:176:ALA:O	1:A:217:GLY:HA3	2.12	0.50
1:B:161:VAL:HG12	2:B:509:EDO:H22	1.94	0.50
5:A:707:HOH:O	2:B:504:EDO:H12	2.11	0.50
1:B:138:LEU:HD23	1:B:143:VAL:HG23	1.94	0.50
1:B:188:GLU:HB2	1:B:191:ILE:HD13	1.93	0.50
1:D:7:GLN:NE2	1:D:386:THR:HG23	2.27	0.49
1:D:81:SER:O	1:D:82:ALA:O	2.30	0.49
1:D:418:GLY:O	1:D:419:GLU:CB	2.59	0.49
1:A:306[B]:MET:CE	1:A:309:GLN:NE2	2.75	0.49
1:D:167:VAL:HG23	1:D:191:ILE:CD1	2.42	0.49
1:B:233:ILE:O	1:B:306:MET:HE1	2.11	0.49
1:D:30:PHE:HE2	1:D:56:LEU:CD2	2.17	0.49
1:D:150:ARG:NE	1:D:177:GLU:HG3	2.28	0.49
1:D:95:TRP:HA	1:D:168:THR:OG1	2.12	0.49
1:B:56:LEU:HD23	1:B:56:LEU:C	2.32	0.49
1:D:333:MET:O	1:D:336:PRO:HD2	2.13	0.49
1:C:36:GLU:OE1	1:C:220[A]:ARG:HD3	2.12	0.49
1:A:233:ILE:O	1:A:306[B]:MET:HE3	2.12	0.48
1:C:15:GLU:HG2	1:C:250:VAL:HB	1.95	0.48
1:C:370:LEU:CD1	1:C:395:ILE:HA	2.43	0.48
1:C:299:HIS:CG	1:C:300:PRO:HA	2.48	0.48
1:B:315:LEU:HD23	1:B:354:CYS:HB3	1.95	0.48
1:D:160:LYS:HE2	4:D:505:UPG:O2	2.14	0.48
1:B:373:SER:OG	1:B:395:ILE:HD11	2.14	0.48
1:D:84:TYR:O	1:D:85:ASP:CB	2.61	0.48
1:D:204:LYS:O	1:D:215[B]:ILE:HD12	2.14	0.48
1:A:298:PRO:HG2	2:B:504:EDO:H21	1.96	0.48
1:A:233:ILE:HG23	1:A:306[B]:MET:CE	2.44	0.48
1:A:267:ARG:HD2	5:A:702:HOH:O	2.14	0.48

Continued on next page...

Continued from previous page...

Atom-1	Atom-2	Distance(Å)	Clash(Å)
1:C:3:LYS:HE2	1:C:419:GLU:HA	1.96	0.48
1:B:330:ASN:ND2	1:D:349:SER:O	2.45	0.48
1:B:307:GLN:HE22	1:B:334:HIS:HE1	1.61	0.47
1:B:150:ARG:HD3	1:B:177:GLU:HG2	1.96	0.47
1:A:370:LEU:CD1	1:A:395:ILE:HA	2.44	0.47
1:D:282:LEU:HD23	1:D:282:LEU:C	2.35	0.47
1:D:117:ILE:O	1:D:117:ILE:HG23	2.15	0.47
1:D:86:LEU:HB3	1:D:88:LYS:HE2	1.97	0.47
1:B:122:VAL:O	1:B:126:ILE:HG12	2.15	0.47
1:C:120:ARG:N	1:C:121:PRO:HD2	2.29	0.47
1:C:115:CYS:O	1:C:119:ALA:HB2	2.15	0.47
1:B:323:ILE:HB	1:B:352[A]:VAL:HG12	1.98	0.46
1:D:416:VAL:CG1	1:D:417:LYS:N	2.77	0.46
1:A:329:GLU:OE1	1:C:329:GLU:CD	2.53	0.46
1:B:84:TYR:CE1	1:B:112:PRO:HB3	2.50	0.46
1:B:236:GLY:HA3	1:B:306:MET:HE3	1.97	0.46
1:B:130:GLU:HG2	1:C:116:ALA:HA	1.96	0.46
1:D:78:ASN:O	1:D:79:ASN:HB2	2.16	0.46
1:D:94:ILE:HG23	1:D:95:TRP:N	2.31	0.46
1:C:56:LEU:HD23	1:C:56:LEU:C	2.36	0.46
1:D:401:ARG:HG2	1:D:401:ARG:HH11	1.81	0.46
1:B:331:ARG:O	1:B:331:ARG:HG2	2.16	0.46
1:C:335:VAL:HB	1:C:336:PRO:HD3	1.98	0.46
1:B:418:GLY:O	1:B:419:GLU:CB	2.63	0.46
1:A:332:PHE:CD2	1:A:352:VAL:CG2	2.98	0.45
1:D:358:GLU:HG2	1:D:359:LYS:HG3	1.97	0.45
1:A:135:GLU:OE1	1:D:137:LYS:HE3	2.15	0.45
2:A:510:EDO:H12	5:B:692:HOH:O	2.16	0.45
1:B:150:ARG:NH2	1:B:175:LEU:HB3	2.31	0.45
1:A:332:PHE:CG	1:A:352:VAL:CG2	3.00	0.45
1:D:243:ALA:HA	1:D:284:MET:CG	2.46	0.45
1:A:2:ASP:HB3	1:A:392:ILE:HD11	1.97	0.45
1:C:127:PHE:HB2	5:C:842:HOH:O	2.15	0.45
1:D:75:SER:O	1:D:76:ASN:CB	2.65	0.45
1:C:3:LYS:HZ1	1:C:419:GLU:HG3	1.81	0.45
1:B:139:GLU:O	1:B:140:GLU:C	2.55	0.45
1:C:317:ALA:O	1:C:356:GLY:HA3	2.16	0.45
1:B:117:ILE:HD13	1:B:117:ILE:HG21	1.63	0.45
1:C:294:VAL:HB	1:C:323:ILE:HD13	1.98	0.45
1:A:65:GLU:HG2	1:A:71:TRP:HB2	1.99	0.45
1:C:313:LEU:C	1:C:313:LEU:HD23	2.37	0.45
1:C:126:ILE:HG23	1:C:136:ILE:HG21	1.98	0.45

Continued on next page...

Continued from previous page...

Atom-1	Atom-2	Distance(Å)	Clash(Å)
1:B:401:ARG:CZ	1:B:401:ARG:HB2	2.46	0.45
1:A:347:ILE:HD12	1:A:352:VAL:HG22	1.98	0.45
1:B:85:ASP:HA	2:B:512:EDO:H12	1.98	0.44
1:D:299:HIS:CG	1:D:300:PRO:HA	2.52	0.44
1:D:81:SER:O	1:D:82:ALA:HB3	2.17	0.44
1:B:187:ARG:HH22	2:B:514:EDO:C2	2.29	0.44
1:D:370:LEU:HD12	1:D:395:ILE:HA	1.98	0.44
1:D:138:LEU:HD23	1:D:143:VAL:HG22	1.99	0.44
1:D:122:VAL:HG12	1:D:125:HIS:HB2	1.99	0.44
1:C:7:GLN:NE2	1:C:386:THR:HG23	2.32	0.44
1:B:276:GLY:HA3	1:B:279:TRP:NE1	2.32	0.44
1:D:33:LEU:O	1:D:103:ARG:HD2	2.18	0.44
1:D:333:MET:HB2	5:D:621:HOH:O	2.18	0.44
1:B:176:ALA:O	1:B:217:GLY:HA3	2.18	0.44
1:B:317:ALA:O	1:B:356:GLY:HA3	2.18	0.44
1:B:138:LEU:CD2	1:B:143:VAL:HG23	2.48	0.44
1:B:314:ASN:HB3	1:B:354:CYS:HB2	1.99	0.44
1:B:130:GLU:CG	1:C:116:ALA:HA	2.48	0.43
1:A:306[B]:MET:HE2	1:A:309:GLN:NE2	2.33	0.43
1:B:199:VAL:HG13	2:B:510:EDO:H11	1.98	0.43
1:A:419:GLU:OXT	1:A:419:GLU:HG3	2.18	0.43
1:D:314:ASN:HB3	1:D:354:CYS:HB2	2.00	0.43
1:A:106:GLN:HB2	2:A:502:EDO:H11	2.01	0.43
1:A:299:HIS:CG	1:A:300:PRO:HA	2.54	0.43
1:A:317:ALA:O	1:A:356:GLY:HA3	2.18	0.43
1:A:295:ARG:O	2:A:510:EDO:H11	2.18	0.43
1:B:91:ARG:HD3	2:B:505:EDO:H22	2.00	0.43
1:D:147:VAL:HG11	1:D:151:LEU:HD11	1.99	0.43
4:C:514:UPG:H3C	4:C:514:UPG:H6'1	2.00	0.43
1:C:163:VAL:HG13	1:C:191:ILE:HD11	1.99	0.43
1:A:347:ILE:HD13	1:A:352:VAL:HG22	1.99	0.43
1:B:130:GLU:HG2	1:C:116:ALA:HB2	1.99	0.43
1:D:144:LYS:HE2	1:D:146[B]:SER:OG	2.18	0.43
1:B:337:GLU:OE1	1:B:340:ARG:NH2	2.52	0.43
1:B:267:ARG:HG3	1:B:273:ILE:HD12	2.01	0.43
1:C:401:ARG:NH1	1:C:404:ASP:OD1	2.52	0.43
1:B:333:MET:O	1:B:336:PRO:HD2	2.18	0.43
1:B:120:ARG:HA	1:B:121:PRO:HD2	1.92	0.43
1:B:127:PHE:CB	1:C:120:ARG:HE	2.32	0.43
1:B:130:GLU:HG2	1:C:116:ALA:CA	2.49	0.42
1:D:122:VAL:HG13	1:D:125:HIS:CD2	2.54	0.42
1:B:367:ALA:HB1	1:B:373:SER:HB2	2.01	0.42

Continued on next page...

Continued from previous page...

Atom-1	Atom-2	Distance(Å)	Clash(Å)
2:B:515:EDO:H22	5:B:725:HOH:O	2.18	0.42
1:B:91:ARG:HD3	2:B:505:EDO:H21	2.00	0.42
1:A:311:THR:HA	1:A:323:ILE:HD12	2.00	0.42
1:C:135:GLU:OE2	1:C:137:LYS:HE3	2.19	0.42
1:A:314:ASN:HB3	1:A:354:CYS:HB2	2.00	0.42
1:B:335:VAL:HB	1:B:336:PRO:HD3	2.01	0.42
1:B:163:VAL:HG13	1:B:191:ILE:HD11	2.01	0.42
1:B:233:ILE:HG21	1:B:371:ARG:CZ	2.50	0.42
1:D:7:GLN:HE22	1:D:386:THR:CG2	2.33	0.42
1:A:306[B]:MET:HE1	1:A:309:GLN:NE2	2.34	0.42
1:D:150:ARG:CD	1:D:177:GLU:HG3	2.50	0.42
1:C:397:ARG:NH1	2:C:505:EDO:O1	2.45	0.42
1:D:114:GLY:H	1:D:119:ALA:HB2	1.84	0.41
1:C:149:GLY:H	2:C:511:EDO:C2	2.26	0.41
1:B:332:PHE:CE2	1:B:352[B]:VAL:HG23	2.54	0.41
1:B:340:ARG:NH1	1:B:364:GLN:O	2.49	0.41
1:D:333:MET:HG2	5:D:722:HOH:O	2.20	0.41
1:A:320:THR:HA	1:A:354:CYS:O	2.20	0.41
1:A:233:ILE:HG23	1:A:306[B]:MET:HE3	2.03	0.41
1:D:150:ARG:HD3	1:D:177:GLU:HG3	2.02	0.41
1:C:115:CYS:HB2	1:C:141:GLY:HA2	2.03	0.41
1:C:244:ILE:HD12	1:C:382:ILE:HD13	2.01	0.41
1:A:349:SER:HB3	1:A:350:ASN:H	1.64	0.41
1:A:332:PHE:CD2	1:A:352:VAL:HG23	2.55	0.41
2:B:510:EDO:H22	5:B:777:HOH:O	2.20	0.41
1:C:7:GLN:HE22	1:C:386:THR:CG2	2.33	0.41
1:C:161:VAL:HG23	1:C:184[A]:ASN:ND2	2.34	0.41
1:C:176:ALA:O	1:C:217:GLY:HA3	2.20	0.41
1:D:297:ALA:HB3	1:D:301:ALA:CB	2.50	0.41
1:D:176:ALA:O	1:D:217:GLY:HA3	2.20	0.41
1:A:276:GLY:HA3	1:A:279:TRP:CE2	2.55	0.41
1:D:85:ASP:OD2	1:D:86:LEU:N	2.54	0.41
1:D:215[B]:ILE:HD12	1:D:216:GLU:N	2.35	0.41
1:B:418:GLY:O	1:B:419:GLU:HB3	2.21	0.41
1:D:117:ILE:C	1:D:119:ALA:N	2.72	0.41
1:B:307:GLN:HG2	1:B:323:ILE:HG21	2.02	0.41
1:A:347:ILE:H	2:A:504:EDO:C2	2.34	0.40
1:B:114:GLY:O	1:B:115:CYS:CB	2.66	0.40
1:A:315:LEU:HD23	1:A:354:CYS:HB3	2.03	0.40
1:B:373:SER:OG	1:B:395:ILE:CD1	2.69	0.40
1:D:87:VAL:HG22	1:D:87:VAL:O	2.22	0.40
1:A:54:MET:HE2	1:A:54:MET:HB3	1.88	0.40

Continued on next page...

Continued from previous page...

Atom-1	Atom-2	Distance(Å)	Clash(Å)
1:B:98:GLY:O	1:B:101[B]:VAL:HG12	2.21	0.40
1:D:151:LEU:HD13	5:D:774:HOH:O	2.20	0.40
1:C:54:MET:HG2	1:C:64:VAL:HG11	2.02	0.40
1:B:101[B]:VAL:HG13	1:B:102:ALA:N	2.37	0.40

There are no symmetry-related clashes.

5.3 Torsion angles

5.3.1 Protein backbone ⓘ

In the following table, the Percentiles column shows the percent Ramachandran outliers of the chain as a percentile score with respect to all X-ray entries followed by that with respect to entries of similar resolution. The Analysed column shows the number of residues for which the backbone conformation was analysed, and the total number of residues.

Mol	Chain	Analysed	Favoured	Allowed	Outliers	Percentiles	
1	A	422/419 (101%)	416 (99%)	6 (1%)	0	100	100
1	B	417/419 (100%)	405 (97%)	11 (3%)	1 (0%)	56	51
1	C	418/419 (100%)	405 (97%)	12 (3%)	1 (0%)	56	51
1	D	419/419 (100%)	403 (96%)	11 (3%)	5 (1%)	19	9
All	All	1676/1676 (100%)	1629 (97%)	40 (2%)	7 (0%)	43	36

All (7) Ramachandran outliers are listed below:

Mol	Chain	Res	Type
1	B	117	ILE
1	D	85	ASP
1	D	117	ILE
1	D	120	ARG
1	C	117	ILE
1	D	115	CYS
1	D	82	ALA

5.3.2 Protein sidechains ⓘ

In the following table, the Percentiles column shows the percent sidechain outliers of the chain as a percentile score with respect to all X-ray entries followed by that with respect to entries of similar resolution. The Analysed column shows the number of residues for which the sidechain

conformation was analysed, and the total number of residues.

Mol	Chain	Analysed	Rotameric	Outliers	Percentiles	
1	A	336/329 (102%)	335 (100%)	1 (0%)	96	97
1	B	331/329 (101%)	329 (99%)	2 (1%)	92	94
1	C	332/329 (101%)	330 (99%)	2 (1%)	92	94
1	D	333/329 (101%)	330 (99%)	3 (1%)	87	90
All	All	1332/1316 (101%)	1324 (99%)	8 (1%)	92	94

All (8) residues with a non-rotameric sidechain are listed below:

Mol	Chain	Res	Type
1	A	229	LEU
1	B	7	GLN
1	B	229	LEU
1	C	229	LEU
1	C	325	GLU
1	D	142	TYR
1	D	229	LEU
1	D	307	GLN

Some sidechains can be flipped to improve hydrogen bonding and reduce clashes. All (5) such sidechains are listed below:

Mol	Chain	Res	Type
1	B	307	GLN
1	C	7	GLN
1	C	23	ASN
1	D	7	GLN
1	D	148	ASN

5.3.3 RNA ⓘ

There are no RNA chains in this entry.

5.4 Non-standard residues in protein, DNA, RNA chains ⓘ

4 non-standard protein/DNA/RNA residues are modelled in this entry.

In the following table, the Counts columns list the number of bonds (or angles) for which Mogul statistics could be retrieved, the number of bonds (or angles) that are observed in the model and the number of bonds (or angles) that are defined in the chemical component dictionary. The Link

column lists molecule types, if any, to which the group is linked. The Z score for a bond length (or angle) is the number of standard deviations the observed value is removed from the expected value. A bond length (or angle) with $|Z| > 2$ is considered an outlier worth inspection. RMSZ is the root-mean-square of all Z scores of the bond lengths (or angles).

Mol	Type	Chain	Res	Link	Bond lengths			Bond angles		
					Counts	RMSZ	# Z > 2	Counts	RMSZ	# Z > 2
1	IAS	A	67	1	7,7,8	6.86	2 (28%)	6,8,10	0.70	0
1	IAS	B	67	1	7,7,8	6.65	1 (14%)	6,8,10	0.80	0
1	IAS	C	67	1	7,7,8	7.07	1 (14%)	6,8,10	0.50	0
1	IAS	D	67	1	7,7,8	7.07	2 (28%)	6,8,10	0.45	0

In the following table, the Chirals column lists the number of chiral outliers, the number of chiral centers analysed, the number of these observed in the model and the number defined in the chemical component dictionary. Similar counts are reported in the Torsion and Rings columns. '-' means no outliers of that kind were identified.

Mol	Type	Chain	Res	Link	Chirals	Torsions	Rings
1	IAS	A	67	1	-	0/6/7/8	0/0/0/0
1	IAS	B	67	1	-	0/6/7/8	0/0/0/0
1	IAS	C	67	1	-	0/6/7/8	0/0/0/0
1	IAS	D	67	1	-	0/6/7/8	0/0/0/0

All (6) bond length outliers are listed below:

Mol	Chain	Res	Type	Atoms	Z	Observed(Å)	Ideal(Å)
1	C	67	IAS	OD1-CG	18.50	1.24	1.11
1	D	67	IAS	OD1-CG	18.43	1.24	1.11
1	A	67	IAS	OD1-CG	17.92	1.23	1.11
1	B	67	IAS	OD1-CG	17.34	1.23	1.11
1	A	67	IAS	CB-CG	2.05	1.53	1.47
1	D	67	IAS	CB-CG	2.01	1.53	1.47

There are no bond angle outliers.

There are no chirality outliers.

There are no torsion outliers.

There are no ring outliers.

5.5 Carbohydrates ⓘ

There are no carbohydrates in this entry.

5.6 Ligand geometry ⓘ

48 ligands are modelled in this entry.

In the following table, the Counts columns list the number of bonds (or angles) for which Mogul statistics could be retrieved, the number of bonds (or angles) that are observed in the model and the number of bonds (or angles) that are defined in the chemical component dictionary. The Link column lists molecule types, if any, to which the group is linked. The Z score for a bond length (or angle) is the number of standard deviations the observed value is removed from the expected value. A bond length (or angle) with $|Z| > 2$ is considered an outlier worth inspection. RMSZ is the root-mean-square of all Z scores of the bond lengths (or angles).

Mol	Type	Chain	Res	Link	Bond lengths			Bond angles		
					Counts	RMSZ	$\# Z > 2$	Counts	RMSZ	$\# Z > 2$
2	EDO	A	501	-	3,3,3	0.50	0	2,2,2	0.44	0
2	EDO	A	502	-	3,3,3	0.56	0	2,2,2	0.32	0
2	EDO	A	503	-	3,3,3	0.47	0	2,2,2	0.39	0
2	EDO	A	504	-	3,3,3	0.60	0	2,2,2	0.37	0
2	EDO	A	505	-	3,3,3	0.49	0	2,2,2	0.39	0
2	EDO	A	506	-	3,3,3	0.49	0	2,2,2	0.38	0
2	EDO	A	507	-	3,3,3	0.62	0	2,2,2	0.37	0
2	EDO	A	508	-	3,3,3	0.55	0	2,2,2	0.39	0
2	EDO	A	509	-	3,3,3	0.82	0	2,2,2	0.32	0
2	EDO	A	510	-	3,3,3	0.42	0	2,2,2	0.51	0
2	EDO	A	511	-	3,3,3	0.93	0	2,2,2	0.46	0
3	ACT	A	512	-	1,3,3	1.97	0	0,3,3	0.00	-
4	UPG	A	513	-	38,38,38	2.17	10 (26%)	54,58,58	1.49	8 (14%)
2	EDO	B	501	-	3,3,3	0.46	0	2,2,2	0.40	0
2	EDO	B	502	-	3,3,3	0.60	0	2,2,2	0.36	0
2	EDO	B	503	-	3,3,3	0.61	0	2,2,2	0.33	0
2	EDO	B	504	-	3,3,3	0.51	0	2,2,2	0.37	0
2	EDO	B	505	-	3,3,3	0.51	0	2,2,2	0.44	0
2	EDO	B	506	-	3,3,3	0.53	0	2,2,2	0.40	0
2	EDO	B	507	-	3,3,3	0.53	0	2,2,2	0.40	0
2	EDO	B	508	-	3,3,3	0.51	0	2,2,2	0.42	0
2	EDO	B	509	-	3,3,3	0.59	0	2,2,2	0.34	0
2	EDO	B	510	-	3,3,3	0.65	0	2,2,2	0.21	0
2	EDO	B	511	-	3,3,3	0.64	0	2,2,2	0.41	0
2	EDO	B	512	-	3,3,3	0.75	0	2,2,2	0.50	0
2	EDO	B	513	-	3,3,3	0.59	0	2,2,2	0.45	0
2	EDO	B	514	-	3,3,3	0.39	0	2,2,2	0.50	0
2	EDO	B	515	-	3,3,3	0.79	0	2,2,2	0.43	0
4	UPG	B	516	-	38,38,38	2.28	11 (28%)	54,58,58	2.22	15 (27%)
2	EDO	C	501	-	3,3,3	0.44	0	2,2,2	0.48	0
2	EDO	C	502	-	3,3,3	0.53	0	2,2,2	0.39	0
2	EDO	C	503	-	3,3,3	0.48	0	2,2,2	0.37	0

Mol	Type	Chain	Res	Link	Bond lengths			Bond angles		
					Counts	RMSZ	# Z > 2	Counts	RMSZ	# Z > 2
2	EDO	C	504	-	3,3,3	0.59	0	2,2,2	0.35	0
2	EDO	C	505	-	3,3,3	0.47	0	2,2,2	0.47	0
2	EDO	C	506	-	3,3,3	0.56	0	2,2,2	0.32	0
2	EDO	C	507	-	3,3,3	0.52	0	2,2,2	0.40	0
2	EDO	C	508	-	3,3,3	0.53	0	2,2,2	0.38	0
2	EDO	C	509	-	3,3,3	0.56	0	2,2,2	0.35	0
2	EDO	C	510	-	3,3,3	0.51	0	2,2,2	0.47	0
2	EDO	C	511	-	3,3,3	0.71	0	2,2,2	0.48	0
2	EDO	C	512	-	3,3,3	0.74	0	2,2,2	0.36	0
3	ACT	C	513	-	1,3,3	2.06	1 (100%)	0,3,3	0.00	-
4	UPG	C	514	-	38,38,38	2.12	11 (28%)	54,58,58	1.68	11 (20%)
2	EDO	D	501	-	3,3,3	0.61	0	2,2,2	0.34	0
2	EDO	D	502	-	3,3,3	0.56	0	2,2,2	0.60	0
2	EDO	D	503	-	3,3,3	0.66	0	2,2,2	0.66	0
2	EDO	D	504	-	3,3,3	0.86	0	2,2,2	0.25	0
4	UPG	D	505	-	38,38,38	2.20	12 (31%)	54,58,58	1.48	8 (14%)

In the following table, the Chirals column lists the number of chiral outliers, the number of chiral centers analysed, the number of these observed in the model and the number defined in the chemical component dictionary. Similar counts are reported in the Torsion and Rings columns. '-' means no outliers of that kind were identified.

Mol	Type	Chain	Res	Link	Chirals	Torsions	Rings
2	EDO	A	501	-	-	0/1/1/1	0/0/0/0
2	EDO	A	502	-	-	0/1/1/1	0/0/0/0
2	EDO	A	503	-	-	0/1/1/1	0/0/0/0
2	EDO	A	504	-	-	0/1/1/1	0/0/0/0
2	EDO	A	505	-	-	0/1/1/1	0/0/0/0
2	EDO	A	506	-	-	0/1/1/1	0/0/0/0
2	EDO	A	507	-	-	0/1/1/1	0/0/0/0
2	EDO	A	508	-	-	0/1/1/1	0/0/0/0
2	EDO	A	509	-	-	0/1/1/1	0/0/0/0
2	EDO	A	510	-	-	0/1/1/1	0/0/0/0
2	EDO	A	511	-	-	0/1/1/1	0/0/0/0
3	ACT	A	512	-	-	0/0/0/0	0/0/0/0
4	UPG	A	513	-	-	0/21/59/59	0/3/3/3
2	EDO	B	501	-	-	0/1/1/1	0/0/0/0
2	EDO	B	502	-	-	0/1/1/1	0/0/0/0
2	EDO	B	503	-	-	0/1/1/1	0/0/0/0
2	EDO	B	504	-	-	0/1/1/1	0/0/0/0
2	EDO	B	505	-	-	0/1/1/1	0/0/0/0
2	EDO	B	506	-	-	0/1/1/1	0/0/0/0

Continued on next page...

Continued from previous page...

Mol	Type	Chain	Res	Link	Chirals	Torsions	Rings
2	EDO	B	507	-	-	0/1/1/1	0/0/0/0
2	EDO	B	508	-	-	0/1/1/1	0/0/0/0
2	EDO	B	509	-	-	0/1/1/1	0/0/0/0
2	EDO	B	510	-	-	0/1/1/1	0/0/0/0
2	EDO	B	511	-	-	0/1/1/1	0/0/0/0
2	EDO	B	512	-	-	0/1/1/1	0/0/0/0
2	EDO	B	513	-	-	0/1/1/1	0/0/0/0
2	EDO	B	514	-	-	0/1/1/1	0/0/0/0
2	EDO	B	515	-	-	0/1/1/1	0/0/0/0
4	UPG	B	516	-	-	0/21/59/59	0/3/3/3
2	EDO	C	501	-	-	0/1/1/1	0/0/0/0
2	EDO	C	502	-	-	0/1/1/1	0/0/0/0
2	EDO	C	503	-	-	0/1/1/1	0/0/0/0
2	EDO	C	504	-	-	0/1/1/1	0/0/0/0
2	EDO	C	505	-	-	0/1/1/1	0/0/0/0
2	EDO	C	506	-	-	0/1/1/1	0/0/0/0
2	EDO	C	507	-	-	0/1/1/1	0/0/0/0
2	EDO	C	508	-	-	0/1/1/1	0/0/0/0
2	EDO	C	509	-	-	0/1/1/1	0/0/0/0
2	EDO	C	510	-	-	0/1/1/1	0/0/0/0
2	EDO	C	511	-	-	0/1/1/1	0/0/0/0
2	EDO	C	512	-	-	0/1/1/1	0/0/0/0
3	ACT	C	513	-	-	0/0/0/0	0/0/0/0
4	UPG	C	514	-	-	0/21/59/59	0/3/3/3
2	EDO	D	501	-	-	0/1/1/1	0/0/0/0
2	EDO	D	502	-	-	0/1/1/1	0/0/0/0
2	EDO	D	503	-	-	0/1/1/1	0/0/0/0
2	EDO	D	504	-	-	0/1/1/1	0/0/0/0
4	UPG	D	505	-	-	0/21/59/59	0/3/3/3

All (45) bond length outliers are listed below:

Mol	Chain	Res	Type	Atoms	Z	Observed(Å)	Ideal(Å)
4	A	513	UPG	C6-N1	6.93	1.47	1.35
4	C	514	UPG	C6-N1	6.67	1.46	1.35
4	B	516	UPG	C6-N1	6.58	1.46	1.35
4	D	505	UPG	C6-N1	6.48	1.46	1.35
4	C	514	UPG	O5'-C5'	4.97	1.56	1.44
4	B	516	UPG	O5'-C5'	4.66	1.56	1.44
4	D	505	UPG	O5'-C5'	4.62	1.55	1.44
4	D	505	UPG	C6-C5	4.62	1.43	1.36
4	A	513	UPG	O5'-C5'	4.54	1.55	1.44

Continued on next page...

Continued from previous page...

Mol	Chain	Res	Type	Atoms	Z	Observed(Å)	Ideal(Å)
4	C	514	UPG	C6-C5	4.31	1.43	1.36
4	B	516	UPG	PB-O3A	-4.26	1.52	1.59
4	B	516	UPG	C2C-C1C	-4.23	1.47	1.53
4	A	513	UPG	C6-C5	4.19	1.42	1.36
4	B	516	UPG	PA-O3A	-4.16	1.52	1.59
4	B	516	UPG	C6-C5	4.08	1.42	1.36
4	A	513	UPG	C2C-C1C	-3.96	1.47	1.53
4	D	505	UPG	PB-O3A	-3.87	1.52	1.59
4	C	514	UPG	C2C-C1C	-3.63	1.48	1.53
4	B	516	UPG	C3C-C2C	-3.31	1.44	1.53
4	D	505	UPG	PA-O3A	-3.31	1.53	1.59
4	A	513	UPG	C3C-C2C	-3.31	1.44	1.53
4	D	505	UPG	C2C-C1C	-3.19	1.48	1.53
4	C	514	UPG	C1'-C2'	3.00	1.61	1.52
4	D	505	UPG	C3C-C2C	-2.98	1.45	1.53
4	C	514	UPG	C3C-C2C	-2.86	1.45	1.53
4	A	513	UPG	C4-N3	2.84	1.42	1.37
4	A	513	UPG	C1'-C2'	2.76	1.60	1.52
4	D	505	UPG	C1'-C2'	2.72	1.60	1.52
4	A	513	UPG	PB-O3A	-2.63	1.55	1.59
4	C	514	UPG	C2-N1	2.47	1.41	1.38
4	B	516	UPG	C2-N1	2.47	1.41	1.38
4	D	505	UPG	C2-N1	2.45	1.41	1.38
4	A	513	UPG	C2-N1	2.45	1.41	1.38
4	B	516	UPG	C1'-C2'	2.35	1.59	1.52
4	A	513	UPG	C6'-C5'	-2.32	1.43	1.52
4	C	514	UPG	PA-O3A	-2.24	1.55	1.59
4	B	516	UPG	C4-N3	2.20	1.40	1.37
4	C	514	UPG	C4-N3	2.16	1.40	1.37
4	D	505	UPG	C4-N3	2.12	1.40	1.37
4	B	516	UPG	O5'-C1'	2.13	1.47	1.41
4	C	514	UPG	O5'-C1'	2.12	1.47	1.41
4	D	505	UPG	C5-C4	2.08	1.46	1.40
3	C	513	ACT	CH3-C	2.06	1.51	1.48
4	C	514	UPG	PB-O3A	-2.02	1.56	1.59
4	D	505	UPG	O3'-C3'	2.00	1.47	1.43

All (42) bond angle outliers are listed below:

Mol	Chain	Res	Type	Atoms	Z	Observed(°)	Ideal(°)
4	B	516	UPG	O3A-PB-O3B	-8.80	81.25	103.48
4	D	505	UPG	N3-C2-N1	5.48	120.55	115.97

Continued on next page...

Continued from previous page...

Mol	Chain	Res	Type	Atoms	Z	Observed(°)	Ideal(°)
4	B	516	UPG	O3B-PB-O1B	-5.48	87.61	109.65
4	B	516	UPG	O2B-PB-O3B	-5.19	83.90	105.71
4	C	514	UPG	N3-C2-N1	4.77	119.95	115.97
4	A	513	UPG	N3-C2-N1	4.65	119.85	115.97
4	B	516	UPG	N3-C2-N1	4.53	119.75	115.97
4	C	514	UPG	O3A-PB-O3B	4.38	114.56	103.48
4	A	513	UPG	C3C-C2C-C1C	3.80	106.85	100.91
4	B	516	UPG	C3C-C2C-C1C	3.71	106.71	100.91
4	C	514	UPG	C3C-C2C-C1C	3.65	106.61	100.91
4	B	516	UPG	C2C-C3C-C4C	3.63	109.89	102.65
4	C	514	UPG	C2-N1-C1C	3.61	120.47	118.21
4	D	505	UPG	C3C-C2C-C1C	3.44	106.30	100.91
4	A	513	UPG	C2C-C3C-C4C	3.44	109.51	102.65
4	C	514	UPG	C2C-C3C-C4C	3.15	108.92	102.65
4	A	513	UPG	O5'-C1'-O3B	-3.13	107.27	111.36
4	D	505	UPG	C2C-C3C-C4C	3.02	108.67	102.65
4	C	514	UPG	O5C-C5C-C4C	3.00	119.96	108.94
4	B	516	UPG	C2-N1-C1C	2.88	120.02	118.21
4	B	516	UPG	C1'-O5'-C5'	2.71	119.00	113.73
4	A	513	UPG	O2A-PA-O3A	2.70	117.93	105.14
4	B	516	UPG	C5-C4-N3	2.70	121.78	116.70
4	A	513	UPG	C2-N1-C1C	2.68	119.89	118.21
4	C	514	UPG	C1'-O5'-C5'	2.58	118.74	113.73
4	D	505	UPG	O5C-C5C-C4C	2.58	118.40	108.94
4	D	505	UPG	C5-C4-N3	2.57	121.55	116.70
4	C	514	UPG	C5-C4-N3	2.56	121.53	116.70
4	C	514	UPG	O2A-PA-O3A	2.54	117.17	105.14
4	B	516	UPG	O2B-PB-O3A	2.50	117.00	105.14
4	A	513	UPG	C5-C4-N3	2.50	121.41	116.70
4	B	516	UPG	PB-O3A-PA	-2.35	124.80	131.68
4	D	505	UPG	PB-O3A-PA	-2.30	124.94	131.68
4	D	505	UPG	O2A-PA-O3A	2.28	115.94	105.14
4	D	505	UPG	C1'-O5'-C5'	2.21	118.03	113.73
4	A	513	UPG	O5C-C5C-C4C	2.18	116.95	108.94
4	B	516	UPG	O2'-C2'-C1'	-2.17	105.32	110.04
4	B	516	UPG	C3'-C4'-C5'	2.16	114.05	110.20
4	B	516	UPG	O2A-PA-O3A	2.14	115.30	105.14
4	C	514	UPG	O2'-C2'-C1'	-2.11	105.44	110.04
4	B	516	UPG	PB-O3B-C1'	2.10	128.46	119.58
4	C	514	UPG	C3'-C4'-C5'	2.09	113.93	110.20

There are no chirality outliers.

There are no torsion outliers.

There are no ring outliers.

5.7 Other polymers ⓘ

There are no such residues in this entry.

5.8 Polymer linkage issues

There are no chain breaks in this entry.

6 Fit of model and data ⓘ

6.1 Protein, DNA and RNA chains ⓘ

In the following table, the column labelled ‘#RSRZ> 2’ contains the number (and percentage) of RSRZ outliers, followed by percent RSRZ outliers for the chain as percentile scores relative to all X-ray entries and entries of similar resolution. The OWAB column contains the minimum, median, 95th percentile and maximum values of the occupancy-weighted average B-factor per residue. The column labelled ‘Q< 0.9’ lists the number of (and percentage) of residues with an average occupancy less than 0.9.

Mol	Chain	Analysed	<RSRZ>	#RSRZ>2	OWAB(Å ²)	Q<0.9
1	A	419/419 (100%)	-0.28	3 (0%) 84 85	12, 22, 37, 69	0
1	B	419/419 (100%)	-0.18	12 (2%) 49 49	12, 23, 44, 70	0
1	C	419/419 (100%)	-0.21	8 (1%) 64 64	17, 25, 38, 72	0
1	D	419/419 (100%)	0.35	34 (8%) 12 11	19, 31, 72, 118	0
All	All	1676/1676 (100%)	-0.08	57 (3%) 41 43	12, 26, 45, 118	0

All (57) RSRZ outliers are listed below:

Mol	Chain	Res	Type	RSRZ
1	D	84	TYR	14.9
1	D	80	PHE	12.0
1	D	83	PRO	10.7
1	D	89	THR	10.0
1	D	81	SER	9.6
1	D	82	ALA	9.5
1	C	116	ALA	8.0
1	D	79	ASN	7.9
1	D	86	LEU	7.8
1	D	119	ALA	7.4
1	C	115	CYS	7.2
1	D	117	ILE	7.1
1	B	118	GLY	6.7
1	D	115	CYS	6.5
1	D	85	ASP	6.2
1	C	418	GLY	5.8
1	B	115	CYS	5.7
1	D	118	GLY	5.4
1	A	419	GLU	5.2
1	D	87	VAL	5.1
1	A	418	GLY	5.0

Continued on next page...

Continued from previous page...

Mol	Chain	Res	Type	RSRZ
1	D	419	GLU	4.9
1	D	77	VAL	4.8
1	B	117	ILE	4.8
1	D	114	GLY	4.7
1	D	78	ASN	4.6
1	D	75	SER	4.6
1	C	113	GLY	4.5
1	B	116	ALA	4.4
1	D	76	ASN	4.2
1	D	116	ALA	3.9
1	D	88	LYS	3.9
1	D	148	ASN	3.8
1	D	120	ARG	3.7
1	C	114	GLY	3.7
1	B	120	ARG	3.7
1	D	112	PRO	3.4
1	D	1	MET	3.4
1	B	419	GLU	3.4
1	D	111	LEU	3.3
1	C	419	GLU	3.2
1	D	113	GLY	3.0
1	D	74	ALA	3.0
1	D	92	ALA	3.0
1	B	113	GLY	2.8
1	D	90	MET	2.7
1	B	1	MET	2.7
1	C	117	ILE	2.6
1	B	114	GLY	2.6
1	B	91	ARG	2.4
1	D	59	GLN	2.4
1	D	329	GLU	2.4
1	D	418	GLY	2.3
1	B	119	ALA	2.2
1	A	89	THR	2.2
1	B	366	MET	2.1
1	C	91	ARG	2.0

6.2 Non-standard residues in protein, DNA, RNA chains ⓘ

In the following table, the Atoms column lists the number of modelled atoms in the group and the number defined in the chemical component dictionary. LLDF column lists the quality of electron density of the group with respect to its neighbouring residues in protein, DNA or RNA chains.

The B-factors column lists the minimum, median, 95th percentile and maximum values of B factors of atoms in the group. The column labelled 'Q< 0.9' lists the number of atoms with occupancy less than 0.9.

Mol	Type	Chain	Res	Atoms	RSR	LLDF	B-factors(Å ²)	Q<0.9
1	IAS	B	67	8/9	0.15	1.52	28,31,33,36	0
1	IAS	A	67	8/9	0.13	0.35	26,28,30,30	0
1	IAS	C	67	8/9	0.13	0.17	29,31,33,34	0
1	IAS	D	67	8/9	0.10	-0.45	19,26,27,28	0

6.3 Carbohydrates

There are no carbohydrates in this entry.

6.4 Ligands

In the following table, the Atoms column lists the number of modelled atoms in the group and the number defined in the chemical component dictionary. LLDF column lists the quality of electron density of the group with respect to its neighbouring residues in protein, DNA or RNA chains. The B-factors column lists the minimum, median, 95th percentile and maximum values of B factors of atoms in the group. The column labelled 'Q< 0.9' lists the number of atoms with occupancy less than 0.9.

Mol	Type	Chain	Res	Atoms	RSR	LLDF	B-factors(Å ²)	Q<0.9
2	EDO	B	513	4/4	0.36	36.98	37,38,39,39	0
2	EDO	B	503	4/4	0.35	23.76	45,46,47,48	0
2	EDO	B	514	4/4	0.23	23.28	43,43,43,44	0
2	EDO	A	510	4/4	0.36	21.92	36,36,36,38	0
2	EDO	A	504	4/4	0.35	17.35	47,48,48,52	0
3	ACT	C	513	4/4	0.13	14.71	48,49,49,50	0
2	EDO	A	507	4/4	0.31	10.42	41,45,45,49	0
2	EDO	B	508	4/4	0.31	10.29	52,53,53,55	0
2	EDO	A	511	4/4	0.37	7.66	43,43,44,46	0
2	EDO	A	503	4/4	0.25	7.52	29,38,40,41	0
2	EDO	C	501	4/4	0.24	6.41	35,36,38,38	0
2	EDO	D	503	4/4	0.31	6.38	39,40,40,41	0
2	EDO	B	515	4/4	0.24	6.29	35,35,36,40	0
2	EDO	B	510	4/4	0.18	5.39	40,42,43,44	0
2	EDO	B	509	4/4	0.17	5.15	42,43,45,49	0
2	EDO	C	510	4/4	0.37	5.14	37,38,39,41	0
2	EDO	A	501	4/4	0.22	5.09	34,40,41,45	0
2	EDO	B	511	4/4	0.28	4.98	35,35,35,36	0
2	EDO	C	504	4/4	0.22	4.70	34,39,39,42	0

Continued on next page...

Continued from previous page...

Mol	Type	Chain	Res	Atoms	RSR	LLDF	B-factors(\AA^2)	Q<0.9
2	EDO	B	512	4/4	0.33	4.68	50,50,51,51	0
2	EDO	C	511	4/4	0.30	4.27	40,43,43,44	0
2	EDO	B	507	4/4	0.35	4.13	42,43,43,45	0
2	EDO	A	509	4/4	0.19	4.12	33,34,34,35	0
2	EDO	C	509	4/4	0.20	3.45	43,45,46,48	0
4	UPG	A	513	36/36	0.25	3.21	32,45,65,66	0
2	EDO	A	502	4/4	0.15	3.10	52,53,53,54	0
2	EDO	D	501	4/4	0.24	3.08	41,42,43,47	0
2	EDO	B	501	4/4	0.18	2.99	28,31,35,39	0
2	EDO	A	508	4/4	0.18	2.93	53,53,53,54	0
2	EDO	A	505	4/4	0.29	2.88	40,41,42,45	0
2	EDO	C	502	4/4	0.13	2.77	27,36,36,39	0
2	EDO	C	507	4/4	0.14	2.73	45,46,47,50	0
2	EDO	D	504	4/4	0.24	2.67	41,42,43,43	0
4	UPG	C	514	36/36	0.34	2.67	70,84,97,98	0
2	EDO	C	503	4/4	0.25	2.07	38,39,40,41	0
2	EDO	B	504	4/4	0.21	1.65	39,40,42,44	0
2	EDO	A	506	4/4	0.17	1.09	39,40,40,42	0
2	EDO	C	506	4/4	0.17	0.94	44,46,46,47	0
4	UPG	B	516	36/36	0.22	0.82	30,45,69,71	0
2	EDO	B	506	4/4	0.18	0.64	40,41,42,46	0
2	EDO	C	508	4/4	0.15	0.61	49,50,51,51	0
4	UPG	D	505	36/36	0.15	0.32	38,42,50,53	0
2	EDO	B	502	4/4	0.14	-0.02	58,58,58,58	0
2	EDO	B	505	4/4	0.23	-0.04	47,48,48,50	0
2	EDO	C	512	4/4	0.25	-0.07	43,44,44,44	0
3	ACT	A	512	4/4	0.14	-0.20	60,60,61,61	0
2	EDO	D	502	4/4	0.14	-0.38	41,43,43,44	0
2	EDO	C	505	4/4	0.08	-3.96	49,49,50,50	0

6.5 Other polymers ⓘ

There are no such residues in this entry.