



Full wwPDB X-ray Structure Validation Report ⓘ

Feb 27, 2014 – 12:58 AM GMT

PDB ID : 2E89
Title : Crystal structure of Aquifex aeolicus TilS in a complex with ATP, Magnesium ion, and L-lysine
Authors : Kuratani, M.; Yoshikawa, Y.; Takahashi, S.; Yokoyama, S.; RIKEN Structural Genomics/Proteomics Initiative (RSGI)
Deposited on : 2007-01-19
Resolution : 2.50 Å(reported)

This is a full wwPDB validation report for a publicly released PDB entry.
We welcome your comments at validation@mail.wwpdb.org
A user guide is available at <http://wwpdb.org/ValidationPDFNotes.html>

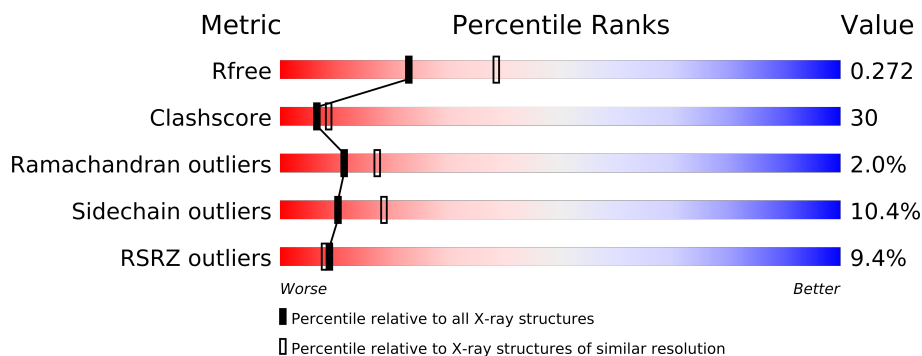
The following versions of software and data (see [references](#)) were used in the production of this report:

MolProbity : 4.02b-467
Mogul : 1.15 2013
Xtriage (Phenix) : dev-1323
EDS : stable22639
Percentile statistics : 21963
Refmac : 5.8.0049
CCP4 : 6.3.0 (Settle)
Ideal geometry (proteins) : Engh & Huber (2001)
Ideal geometry (DNA, RNA) : Parkinson et. al. (1996)
Validation Pipeline (wwPDB-VP) : stable22683

1 Overall quality at a glance

The reported resolution of this entry is 2.50 Å.

Percentile scores (ranging between 0-100) for global validation metrics of the entry are shown in the following graphic. The table shows the number of entries on which the scores are based.



Metric	Whole archive (#Entries)	Similar resolution (#Entries, resolution range(Å))
R_{free}	66092	2784 (2.50-2.50)
Clashscore	79885	3562 (2.50-2.50)
Ramachandran outliers	78287	3480 (2.50-2.50)
Sidechain outliers	78261	3482 (2.50-2.50)
RSRZ outliers	66119	2785 (2.50-2.50)

The table below summarises the geometric issues observed across the polymeric chains and their fit to the electron density. The red, orange, yellow and green segments on the lower bar indicate the fraction of residues that contain outliers for ≥ 3 , 2, 1 and 0 types of geometric quality criteria. The upper red bar (where present) indicates the fraction of residues that have poor fit to the electron density.

Mol	Chain	Length	Quality of chain
1	A	317	
1	B	317	
1	C	317	
1	D	317	

The following table lists non-polymeric compounds that are outliers for geometric or electron-density-fit criteria:

Mol	Type	Chain	Res	Geometry	Electron density
2	MG	C	601	-	X

2 Entry composition

There are 5 unique types of molecules in this entry. The entry contains 10642 atoms, of which 0 are hydrogen and 0 are deuterium.

In the tables below, the ZeroOcc column contains the number of atoms modelled with zero occupancy, the AltConf column contains the number of residues with at least one atom in alternate conformation and the Trace column contains the number of residues modelled with at most 2 atoms.

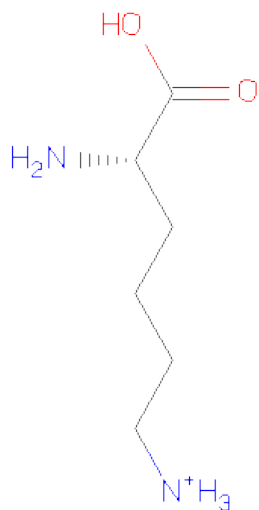
- Molecule 1 is a protein called tRNA(Ile)-lysidine synthase.

Mol	Chain	Residues	Atoms					ZeroOcc	AltConf	Trace
1	A	317	Total	C	N	O	S	0	0	0
			2630	1682	467	472	9			
1	B	314	Total	C	N	O	S	0	0	0
			2606	1667	464	466	9			
1	C	314	Total	C	N	O	S	0	0	0
			2606	1667	464	466	9			
1	D	313	Total	C	N	O	S	0	0	0
			2600	1664	463	464	9			

- Molecule 2 is MAGNESIUM ION (three-letter code: MG) (formula: Mg).

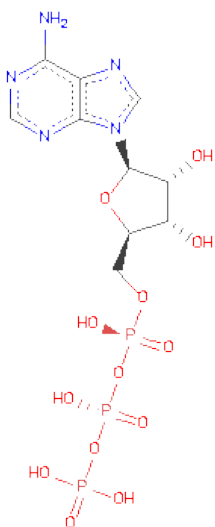
Mol	Chain	Residues	Atoms		ZeroOcc	AltConf
2	C	1	Total	Mg	0	0
			1	1		

- Molecule 3 is LYSINE (three-letter code: LYS) (formula: C₆H₁₅N₂O₂).



Mol	Chain	Residues	Atoms				ZeroOcc	AltConf
3	B	1	Total	C	N	O	0	0
			10	6	2	2		

- Molecule 4 is ADENOSINE-5'-TRIPHOSPHATE (three-letter code: ATP) (formula: $C_{10}H_{16}N_5O_{13}P_3$).



Mol	Chain	Residues	Atoms					ZeroOcc	AltConf
4	A	1	Total	C	N	O	P	0	0
			31	10	5	13	3		
4	B	1	Total	C	N	O	P	0	0
			31	10	5	13	3		
4	C	1	Total	C	N	O	P	0	0
			31	10	5	13	3		
4	D	1	Total	C	N	O	P	0	0
			31	10	5	13	3		

- Molecule 5 is water.

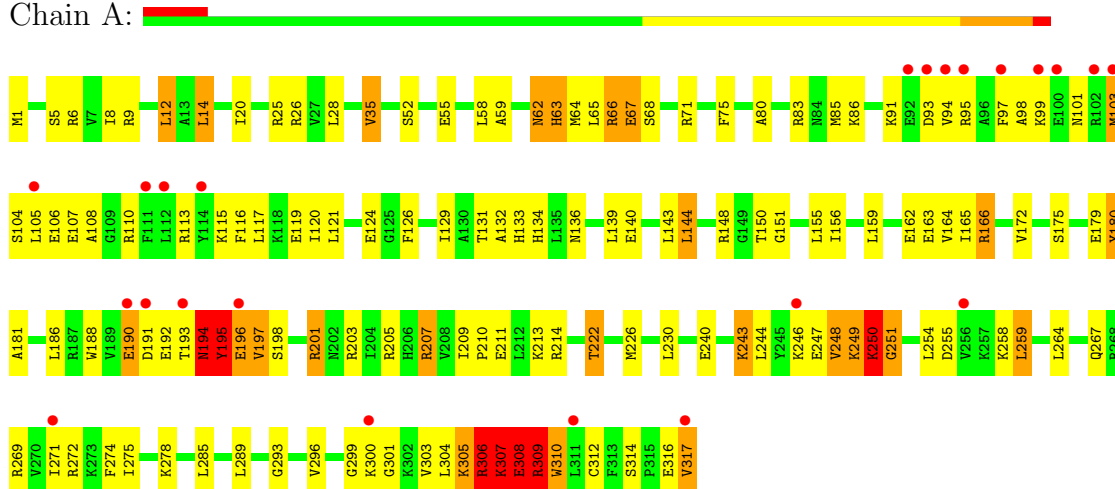
Mol	Chain	Residues	Atoms		ZeroOcc	AltConf
5	A	15	Total	O	0	0
			15	15		
5	B	12	Total	O	0	0
			12	12		
5	C	33	Total	O	0	0
			33	33		
5	D	5	Total	O	0	0
			5	5		

3 Residue-property plots

These plots are drawn for all protein, RNA and DNA chains in the entry. The first graphic for a chain summarises the proportions of errors displayed in the second graphic. The second graphic shows the sequence view annotated by issues in geometry and electron density. Residues are color-coded according to the number of geometric quality criteria for which they contain at least one outlier: green = 0, yellow = 1, orange = 2 and red = 3 or more. A red dot above a residue indicates a poor fit to the electron density ($RSRZ > 2$). Stretches of 2 or more consecutive residues without any outlier are shown as a green connector. Residues present in the sample, but not in the model, are shown in grey.

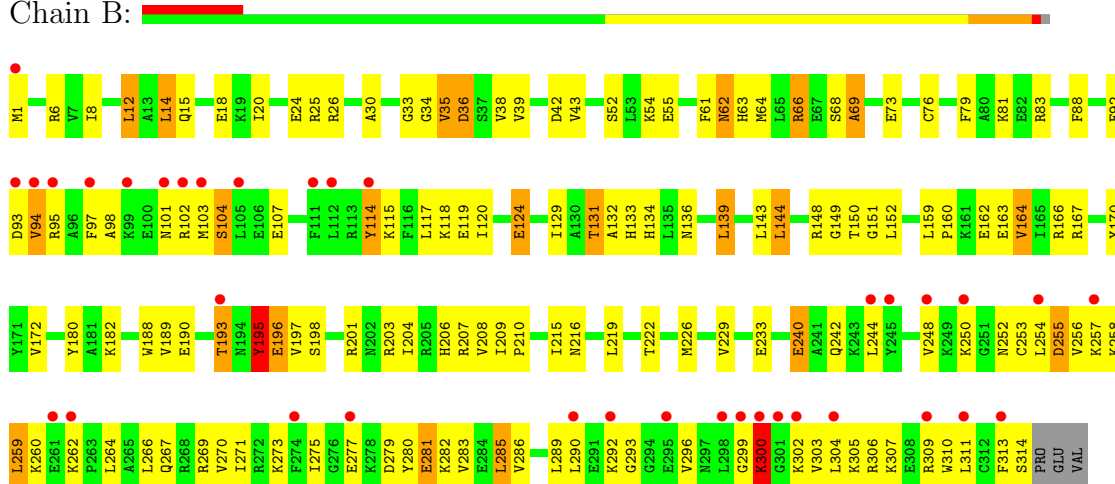
• Molecule 1: tRNA(Ile)-lysine synthase

Chain A:



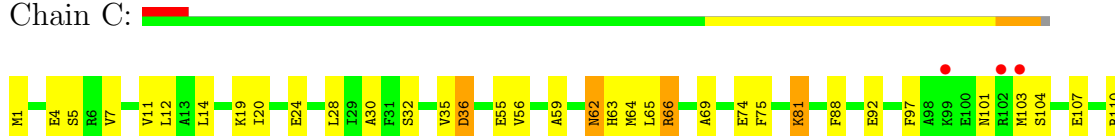
• Molecule 1: tRNA(Ile)-lysine synthase

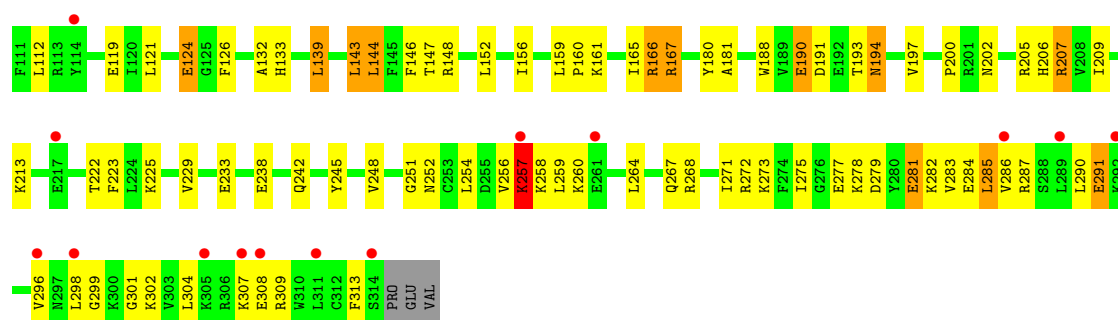
Chain B:



• Molecule 1: tRNA(Ile)-lysine synthase

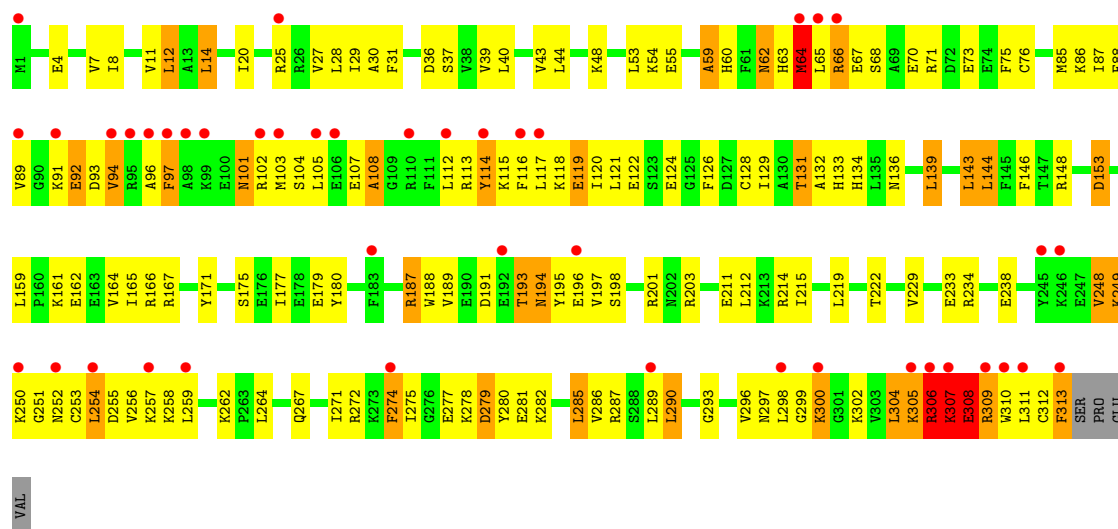
Chain C:





• Molecule 1: tRNA(Ile)-lysidine synthase

Chain D:



4 Data and refinement statistics

Property	Value	Source
Space group	P 1 21 1	Depositor
Cell constants a, b, c, α , β , γ	97.42Å 81.57Å 109.11Å 90.00° 105.98° 90.00°	Depositor
Resolution (Å)	44.03 – 2.50 44.03 – 2.40	Depositor EDS
% Data completeness (in resolution range)	91.8 (44.03-2.50) 89.4 (44.03-2.40)	Depositor EDS
R_{merge}	0.09	Depositor
R_{sym}	0.08	Depositor
$\langle I/\sigma(I) \rangle$ ¹	2.07 (at 2.39Å)	Xtriage
Refinement program	CNS 1.1	Depositor
R, R_{free}	0.229 , 0.274 0.227 , 0.272	Depositor DCC
R_{free} test set	2650 reflections (5.05%)	DCC
Wilson B-factor (Å ²)	41.7	Xtriage
Anisotropy	0.426	Xtriage
Bulk solvent k_{sol} (e/Å ³), B_{sol} (Å ²)	0.35 , 33.2	EDS
Estimated twinning fraction	No twinning to report.	Xtriage
L-test for twinning	$\langle L \rangle = 0.48$, $\langle L^2 \rangle = 0.31$	Xtriage
Outliers	0 of 57692 reflections	Xtriage
F_o, F_c correlation	0.93	EDS
Total number of atoms	10642	wwPDB-VP
Average B, all atoms (Å ²)	54.0	wwPDB-VP

Xtriage's analysis on translational NCS is as follows: *The largest off-origin peak in the Patterson function is 4.47% of the height of the origin peak. No significant pseudotranslation is detected.*

¹Intensities estimated from amplitudes.

5 Model quality

5.1 Standard geometry

Bond lengths and bond angles in the following residue types are not validated in this section: MG, ATP

The Z score for a bond length (or angle) is the number of standard deviations the observed value is removed from the expected value. A bond length (or angle) with $|Z| > 5$ is considered an outlier worth inspection. RMSZ is the root-mean-square of all Z scores of the bond lengths (or angles).

Mol	Chain	Bond lengths		Bond angles	
		RMSZ	$\# Z > 5$	RMSZ	$\# Z > 5$
1	A	1.03	28/2672 (1.0%)	0.83	11/3569 (0.3%)
1	B	0.53	0/2647	0.69	0/3535
1	C	0.51	0/2647	0.68	0/3535
1	D	0.57	2/2641 (0.1%)	0.82	7/3527 (0.2%)
All	All	0.69	30/10607 (0.3%)	0.76	18/14166 (0.1%)

Chiral center outliers are detected by calculating the chiral volume of a chiral center and verifying if the center is modelled as a planar moiety or with the opposite hand. A planarity outlier is detected by checking planarity of atoms in a peptide group, atoms in a mainchain group or atoms of a sidechain that are expected to be planar.

Mol	Chain	#Chirality outliers	#Planarity outliers
1	A	0	1
1	B	0	1
All	All	0	2

All (30) bond length outliers are listed below:

Mol	Chain	Res	Type	Atoms	Z	Observed(Å)	Ideal(Å)
1	A	248	VAL	CB-CG1	-13.83	1.23	1.52
1	A	248	VAL	CB-CG2	-13.79	1.23	1.52
1	A	307	LYS	C-O	-10.62	1.03	1.23
1	A	310	TRP	CG-CD1	-9.67	1.23	1.36
1	A	310	TRP	CD2-CE2	-9.38	1.30	1.41
1	A	248	VAL	C-O	-8.11	1.07	1.23
1	A	310	TRP	C-O	-7.94	1.08	1.23
1	A	308	GLU	C-O	-7.50	1.09	1.23
1	A	250	LYS	CA-C	-7.42	1.33	1.52
1	A	310	TRP	CZ3-CH2	-7.29	1.28	1.40
1	A	308	GLU	N-CA	-7.24	1.31	1.46
1	A	250	LYS	C-O	-7.18	1.09	1.23

Continued on next page...

Continued from previous page...

Mol	Chain	Res	Type	Atoms	Z	Observed(Å)	Ideal(Å)
1	A	307	LYS	CA-CB	-7.02	1.38	1.53
1	A	306	ARG	C-O	-6.94	1.10	1.23
1	A	249	LYS	CD-CE	-6.93	1.33	1.51
1	A	308	GLU	CA-C	-6.92	1.34	1.52
1	A	249	LYS	CE-NZ	-6.82	1.31	1.49
1	A	250	LYS	CA-CB	-6.80	1.39	1.53
1	D	96	ALA	N-CA	6.34	1.59	1.46
1	A	309	ARG	C-O	-6.33	1.11	1.23
1	A	310	TRP	CD1-NE1	-6.24	1.27	1.38
1	A	306	ARG	CZ-NH2	-6.04	1.25	1.33
1	D	96	ALA	CA-CB	-5.80	1.40	1.52
1	A	310	TRP	CE3-CZ3	-5.75	1.28	1.38
1	A	307	LYS	CA-C	-5.74	1.38	1.52
1	A	306	ARG	CB-CG	-5.69	1.37	1.52
1	A	307	LYS	C-N	-5.63	1.21	1.34
1	A	308	GLU	CD-OE2	-5.61	1.19	1.25
1	A	250	LYS	C-N	-5.51	1.23	1.33
1	A	306	ARG	CZ-NH1	-5.05	1.26	1.33

All (18) bond angle outliers are listed below:

Mol	Chain	Res	Type	Atoms	Z	Observed(°)	Ideal(°)
1	D	306	ARG	N-CA-C	10.59	139.58	111.00
1	A	248	VAL	CG1-CB-CG2	-9.16	96.25	110.90
1	A	193	THR	N-CA-C	-8.84	87.12	111.00
1	A	307	LYS	CB-CA-C	-8.14	94.13	110.40
1	A	307	LYS	N-CA-C	7.29	130.69	111.00
1	D	108	ALA	N-CA-C	-6.38	93.78	111.00
1	A	309	ARG	CG-CD-NE	6.32	125.07	111.80
1	A	309	ARG	N-CA-C	-6.03	94.73	111.00
1	A	309	ARG	NE-CZ-NH2	5.99	123.30	120.30
1	A	309	ARG	NE-CZ-NH1	-5.97	117.31	120.30
1	D	94	VAL	N-CA-C	5.88	126.87	111.00
1	A	307	LYS	C-N-CA	-5.80	107.20	121.70
1	D	92	GLU	N-CA-C	-5.67	95.70	111.00
1	D	254	LEU	CA-CB-CG	5.56	128.08	115.30
1	D	194	ASN	N-CA-C	-5.38	96.48	111.00
1	D	97	PHE	N-CA-CB	5.30	120.14	110.60
1	A	307	LYS	O-C-N	-5.12	114.51	122.70
1	A	306	ARG	NE-CZ-NH1	5.09	122.84	120.30

There are no chirality outliers.

All (2) planarity outliers are listed below:

Mol	Chain	Res	Type	Group
1	A	307	LYS	Peptide
1	B	195	TYR	Sidechain

5.2 Close contacts ⓘ

In the following table, the Non-H and H(model) columns list the number of non-hydrogen atoms and hydrogen atoms in the chain respectively. The H(added) column lists the number of hydrogens added by MolProbity. The Clashes column lists the number of clashes within the asymmetric unit, and the number in parentheses is this value normalized per 1000 atoms of the molecule in the chain. The Symm-Clashes column gives symmetry related clashes, in the same way as for the Clashes column.

Mol	Chain	Non-H	H(model)	H(added)	Clashes	Symm-Clashes
1	A	2630	0	2722	166	0
1	B	2606	0	2700	152	0
1	C	2606	0	2700	112	0
1	D	2600	0	2695	214	0
2	C	1	0	0	0	0
3	B	10	0	12	4	0
4	A	31	0	12	3	0
4	B	31	0	12	1	0
4	C	31	0	12	5	0
4	D	31	0	12	3	0
5	A	15	0	0	1	0
5	B	12	0	0	0	0
5	C	33	0	0	3	0
5	D	5	0	0	0	0
All	All	10642	0	10877	635	0

Clashscore is defined as the number of clashes calculated for the entry per 1000 atoms (including hydrogens) of the entry. The overall clashscore for this entry is 30.

All (635) close contacts within the same asymmetric unit are listed below.

Atom-1	Atom-2	Distance(Å)	Clash(Å)
1:A:306:ARG:CG	1:A:306:ARG:HH21	1.52	1.14
1:A:249:LYS:O	1:A:250:LYS:HD2	1.44	1.14
1:A:307:LYS:O	1:A:308:GLU:HB2	1.51	1.10
1:A:306:ARG:NH2	1:A:306:ARG:HG2	1.46	1.06
1:D:66:ARG:HG2	1:D:66:ARG:HH11	1.22	1.01
1:A:66:ARG:HH11	1:A:66:ARG:HG3	1.26	1.00
1:D:279:ASP:OD1	1:D:282:LYS:HB2	1.67	0.95

Continued on next page...

Continued from previous page...

Atom-1	Atom-2	Distance(Å)	Clash(Å)
1:A:131:THR:HG21	1:A:133:HIS:ND1	1.81	0.94
1:D:248:VAL:HG21	1:D:259:LEU:CD2	1.99	0.93
1:A:121:LEU:HD12	1:A:126:PHE:HB2	1.51	0.92
1:A:98:ALA:HA	1:A:103:MET:HB2	1.54	0.90
1:A:307:LYS:O	1:A:307:LYS:HG2	1.72	0.90
1:D:131:THR:HG23	1:D:133:HIS:H	1.38	0.89
1:A:307:LYS:O	1:A:308:GLU:CB	2.08	0.89
1:D:197:VAL:HG12	1:D:203:ARG:CZ	2.03	0.88
1:D:131:THR:HG21	1:D:133:HIS:ND1	1.89	0.86
1:B:289:LEU:HB3	1:B:311:LEU:HD21	1.57	0.85
1:D:104:SER:HB3	1:D:107:GLU:HG2	1.59	0.85
1:A:249:LYS:O	1:A:250:LYS:CD	2.25	0.84
1:B:290:LEU:HD23	1:B:311:LEU:HD12	1.58	0.84
1:D:153:ASP:HA	1:D:234:ARG:HH21	1.43	0.84
1:C:200:PRO:HB3	1:D:215:ILE:HD12	1.60	0.84
1:B:282:LYS:O	1:B:286:VAL:HG23	1.79	0.83
1:A:207:ARG:HG2	1:A:207:ARG:HH11	1.43	0.83
1:D:25:ARG:HD2	1:D:54:LYS:HE3	1.58	0.83
1:C:194:ASN:H	1:C:194:ASN:HD22	1.21	0.82
1:C:161:LYS:HG3	1:C:166:ARG:HD2	1.59	0.82
1:C:252:ASN:HD21	1:C:313:PHE:HB2	1.44	0.82
1:A:97:PHE:O	1:A:101:ASN:HB2	1.80	0.81
1:B:289:LEU:O	1:B:306:ARG:HD2	1.81	0.81
1:B:197:VAL:HG11	1:B:207:ARG:HH11	1.42	0.81
1:C:20:ILE:HG23	1:C:166:ARG:HG3	1.63	0.80
1:D:308:GLU:HG2	1:D:308:GLU:O	1.81	0.80
1:D:187:ARG:HH11	1:D:187:ARG:HG3	1.47	0.79
1:A:65:LEU:HA	1:A:95:ARG:NH2	1.97	0.79
1:A:289:LEU:O	1:A:306:ARG:HD2	1.82	0.78
1:C:36:ASP:HB2	1:C:132:ALA:HB1	1.63	0.78
1:D:306:ARG:HG2	1:D:308:GLU:OE2	1.82	0.77
1:C:252:ASN:ND2	1:C:313:PHE:HB2	2.00	0.77
1:D:29:ILE:HD11	1:D:44:LEU:HD12	1.65	0.77
1:D:104:SER:O	1:D:108:ALA:HB2	1.84	0.77
1:D:64:MET:HB3	1:D:93:ASP:OD1	1.85	0.77
1:A:240:GLU:O	1:A:243:LYS:HG3	1.85	0.77
1:A:65:LEU:HA	1:A:95:ARG:HH21	1.50	0.76
1:A:28:LEU:HD11	1:A:59:ALA:HB2	1.65	0.76
1:A:249:LYS:C	1:A:250:LYS:HD2	2.06	0.76
1:D:234:ARG:HD3	1:D:238:GLU:OE1	1.86	0.76
1:A:150:THR:O	1:B:226:MET:HG3	1.84	0.76
1:A:305:LYS:HB2	1:A:305:LYS:NZ	2.01	0.76

Continued on next page...

Continued from previous page...

Atom-1	Atom-2	Distance(Å)	Clash(Å)
1:A:190:GLU:CD	1:A:190:GLU:H	1.88	0.76
1:B:98:ALA:HB1	1:B:103:MET:O	1.86	0.76
1:D:62:ASN:HD22	1:D:64:MET:H	1.35	0.75
1:D:66:ARG:CG	1:D:66:ARG:HH11	1.99	0.75
1:D:97:PHE:CE1	1:D:101:ASN:ND2	2.55	0.75
1:B:296:VAL:O	1:B:303:VAL:HA	1.87	0.75
1:D:161:LYS:HE3	1:D:166:ARG:CZ	2.16	0.75
1:D:118:LYS:O	1:D:122:GLU:HG3	1.87	0.74
1:B:131:THR:HG23	1:B:133:HIS:H	1.53	0.74
1:C:275:ILE:HG22	1:C:304:LEU:HD21	1.70	0.74
1:D:248:VAL:HG21	1:D:259:LEU:HD22	1.70	0.73
1:C:205:ARG:NH1	5:C:935:HOH:O	2.17	0.73
1:C:190:GLU:H	1:C:190:GLU:CD	1.89	0.73
1:D:197:VAL:HG12	1:D:203:ARG:NH2	2.04	0.73
1:C:133:HIS:HB2	1:C:167:ARG:HD2	1.70	0.73
1:B:139:LEU:HD22	1:B:143:LEU:HD23	1.70	0.73
1:D:121:LEU:HD12	1:D:126:PHE:HB2	1.71	0.73
1:A:66:ARG:NH1	1:A:66:ARG:HG3	1.96	0.72
1:D:187:ARG:CG	1:D:187:ARG:HH11	2.01	0.72
1:B:131:THR:HG21	1:B:133:HIS:ND1	2.05	0.72
1:C:298:LEU:HB2	1:C:302:LYS:HB2	1.71	0.72
1:D:304:LEU:HD23	1:D:312:CYS:O	1.90	0.72
1:D:306:ARG:HG3	1:D:308:GLU:HB3	1.72	0.72
4:C:902:ATP:H5'1	4:C:902:ATP:O1G	1.88	0.72
1:C:291:GLU:HA	1:C:291:GLU:OE2	1.89	0.72
1:A:207:ARG:HG2	1:A:207:ARG:NH1	1.99	0.72
1:D:161:LYS:HE3	1:D:166:ARG:NE	2.05	0.72
1:B:62:ASN:ND2	1:B:64:MET:H	1.88	0.72
1:D:30:ALA:HA	1:D:117:LEU:HD21	1.72	0.71
1:D:65:LEU:HD21	1:D:94:VAL:HB	1.70	0.71
1:A:65:LEU:HD21	1:A:94:VAL:HB	1.72	0.71
1:B:34:GLY:O	1:B:38:VAL:HG23	1.91	0.71
1:A:249:LYS:C	1:A:250:LYS:CD	2.57	0.70
1:B:131:THR:HG22	1:B:167:ARG:HG2	1.73	0.70
1:B:193:THR:HA	1:B:196:GLU:OE1	1.89	0.70
1:A:317:VAL:HG21	1:C:251:GLY:H	1.55	0.70
1:D:29:ILE:CD1	1:D:44:LEU:HD12	2.21	0.70
1:B:103:MET:HG2	1:B:107:GLU:OE1	1.91	0.70
1:A:285:LEU:HB3	1:A:296:VAL:HG11	1.72	0.70
1:C:259:LEU:CD2	1:C:267:GLN:HG2	2.21	0.70
1:D:305:LYS:CG	1:D:306:ARG:H	2.05	0.70
1:B:14:LEU:HD13	1:B:20:ILE:HG13	1.74	0.70

Continued on next page...

Continued from previous page...

Atom-1	Atom-2	Distance(Å)	Clash(Å)
1:B:267:GLN:O	1:B:271:ILE:HG12	1.91	0.70
1:D:119:GLU:HA	1:D:122:GLU:OE1	1.92	0.70
1:A:20:ILE:HG23	1:A:166:ARG:HG3	1.74	0.70
1:D:281:GLU:H	1:D:281:GLU:CD	1.93	0.69
1:B:103:MET:HB3	1:B:107:GLU:HG3	1.74	0.69
1:D:114:TYR:O	1:D:118:LYS:HG3	1.93	0.69
1:D:134:HIS:HD2	1:D:136:ASN:H	1.38	0.69
1:A:104:SER:OG	1:A:107:GLU:HG2	1.93	0.69
1:D:248:VAL:O	1:D:249:LYS:C	2.30	0.68
1:A:305:LYS:HB2	1:A:305:LYS:HZ2	1.59	0.68
1:B:39:VAL:O	1:B:43:VAL:HG23	1.92	0.68
1:C:35:VAL:HG23	1:C:36:ASP:H	1.58	0.68
1:B:197:VAL:HG11	1:B:207:ARG:NH1	2.07	0.68
1:D:131:THR:CG2	1:D:133:HIS:ND1	2.57	0.68
1:C:285:LEU:HD12	1:C:296:VAL:HG13	1.76	0.68
1:C:197:VAL:HG11	1:C:207:ARG:HH11	1.59	0.68
1:C:194:ASN:HD22	1:C:194:ASN:N	1.92	0.68
1:A:131:THR:HG21	1:A:133:HIS:CE1	2.28	0.67
1:D:308:GLU:CG	1:D:308:GLU:O	2.42	0.67
1:C:245:TYR:CZ	1:C:273:LYS:HD2	2.29	0.67
1:D:104:SER:O	1:D:108:ALA:CB	2.43	0.67
1:A:131:THR:CG2	1:A:133:HIS:ND1	2.56	0.67
1:D:306:ARG:CG	1:D:308:GLU:HB3	2.24	0.67
1:D:304:LEU:HG	1:D:313:PHE:CD1	2.30	0.67
1:A:307:LYS:O	1:A:307:LYS:CG	2.32	0.67
1:A:285:LEU:HD13	1:A:296:VAL:HG13	1.77	0.66
1:B:197:VAL:HG21	1:B:207:ARG:NH1	2.10	0.66
1:D:25:ARG:CD	1:D:54:LYS:HE3	2.25	0.66
1:D:304:LEU:HG	1:D:313:PHE:HD1	1.61	0.66
1:B:289:LEU:HD21	1:B:296:VAL:HG23	1.77	0.66
1:B:62:ASN:HD22	1:B:64:MET:H	1.43	0.66
1:A:191:ASP:O	1:A:194:ASN:HB3	1.96	0.66
1:C:81:LYS:HD3	1:C:81:LYS:O	1.95	0.66
1:C:62:ASN:ND2	1:C:64:MET:H	1.94	0.66
1:A:293:GLY:HA2	1:A:306:ARG:HD3	1.77	0.65
1:D:248:VAL:O	1:D:250:LYS:HG2	1.95	0.65
1:D:193:THR:CA	1:D:196:GLU:HG3	2.27	0.65
1:A:191:ASP:O	1:A:194:ASN:CB	2.44	0.65
1:D:248:VAL:HG12	1:D:249:LYS:N	2.11	0.65
1:B:97:PHE:HE2	1:B:103:MET:HE1	1.62	0.65
1:C:267:GLN:O	1:C:271:ILE:HG12	1.97	0.64
1:D:139:LEU:HD22	1:D:143:LEU:HD22	1.78	0.64

Continued on next page...

Continued from previous page...

Atom-1	Atom-2	Distance(Å)	Clash(Å)
1:D:219:LEU:O	1:D:222:THR:HG22	1.98	0.64
1:B:25:ARG:HD2	1:B:54:LYS:HG3	1.80	0.64
1:B:36:ASP:HB2	1:B:132:ALA:HB1	1.78	0.64
1:B:229:VAL:O	1:B:233:GLU:HG3	1.98	0.64
1:D:259:LEU:HD12	1:D:267:GLN:HA	1.80	0.64
1:D:251:GLY:C	1:D:253:CYS:H	2.00	0.63
1:D:65:LEU:O	1:D:66:ARG:HD2	1.98	0.63
1:C:200:PRO:CB	1:D:215:ILE:HD12	2.28	0.63
1:C:209:ILE:O	1:C:213:LYS:HG3	1.98	0.63
1:D:62:ASN:ND2	1:D:64:MET:H	1.96	0.63
1:D:132:ALA:HB3	4:D:903:ATP:O3'	1.98	0.63
1:A:306:ARG:HG2	1:A:306:ARG:HH21	0.61	0.63
1:D:94:VAL:HG22	1:D:112:LEU:CD1	2.28	0.63
1:B:305:LYS:HZ1	1:B:307:LYS:HE3	1.63	0.63
1:D:97:PHE:HE1	1:D:101:ASN:ND2	1.96	0.63
1:B:188:TRP:NE1	3:B:950:LYS:HE2	2.13	0.63
1:D:197:VAL:CG1	1:D:203:ARG:CZ	2.77	0.63
1:C:62:ASN:C	1:C:62:ASN:HD22	2.01	0.63
1:C:1:MET:HG3	1:C:5:SER:OG	1.98	0.63
1:B:309:ARG:NH1	1:B:310:TRP:CZ2	2.65	0.63
1:C:238:GLU:O	1:C:242:GLN:HG2	1.98	0.63
1:B:253:CYS:O	1:B:254:LEU:HD12	1.99	0.62
1:D:193:THR:C	1:D:196:GLU:HG3	2.19	0.62
1:D:188:TRP:HD1	1:D:189:VAL:O	1.82	0.62
1:D:27:VAL:HG13	1:D:128:CYS:SG	2.39	0.62
1:B:289:LEU:HD21	1:B:296:VAL:CG2	2.29	0.62
1:C:62:ASN:HD22	1:C:64:MET:H	1.47	0.62
1:A:121:LEU:HD12	1:A:126:PHE:CB	2.29	0.61
1:D:114:TYR:C	1:D:118:LYS:HE2	2.21	0.61
1:A:113:ARG:HD3	4:A:900:ATP:C4	2.35	0.61
1:A:192:GLU:HA	1:A:194:ASN:CG	2.21	0.61
1:B:62:ASN:C	1:B:62:ASN:HD22	2.04	0.61
1:C:4:GLU:HA	1:C:180:TYR:CD1	2.36	0.61
1:B:306:ARG:HB2	1:B:311:LEU:HD21	1.81	0.61
1:A:163:GLU:O	1:A:166:ARG:NH1	2.31	0.61
1:B:256:VAL:HG22	1:B:290:LEU:HD23	1.81	0.60
1:D:191:ASP:OD1	1:D:193:THR:HG23	2.00	0.60
1:B:299:GLY:H	1:B:302:LYS:HB2	1.65	0.60
1:D:108:ALA:O	1:D:112:LEU:HG	2.00	0.60
1:D:94:VAL:HG22	1:D:112:LEU:HD13	1.82	0.60
1:D:120:ILE:O	1:D:124:GLU:HB2	2.01	0.60
1:C:167:ARG:CG	1:C:167:ARG:HH11	2.14	0.60

Continued on next page...

Continued from previous page...

Atom-1	Atom-2	Distance(Å)	Clash(Å)
1:D:102:ARG:HH11	1:D:102:ARG:HG3	1.67	0.60
1:B:206:HIS:O	1:B:210:PRO:HG2	2.01	0.60
1:A:131:THR:HG23	4:A:900:ATP:O2'	2.02	0.60
1:D:254:LEU:O	1:D:310:TRP:CE3	2.55	0.60
1:C:272:ARG:HD3	1:C:278:LYS:HG2	1.84	0.60
1:B:252:ASN:HD21	1:B:313:PHE:HB2	1.67	0.60
1:A:98:ALA:HB2	1:A:108:ALA:CB	2.32	0.60
1:D:67:GLU:O	1:D:70:GLU:HG2	2.02	0.60
1:D:63:HIS:C	1:D:65:LEU:H	2.05	0.60
1:B:14:LEU:CD2	1:B:18:GLU:HG3	2.32	0.60
1:C:88:PHE:CZ	1:C:124:GLU:HG2	2.37	0.59
1:C:205:ARG:HD2	5:C:935:HOH:O	2.01	0.59
1:C:190:GLU:CD	1:C:190:GLU:N	2.56	0.59
1:B:115:LYS:HG2	1:B:119:GLU:OE1	2.02	0.59
1:A:207:ARG:CG	1:A:207:ARG:HH11	2.14	0.59
1:D:64:MET:CB	1:D:93:ASP:OD1	2.51	0.59
1:A:131:THR:HG22	1:A:133:HIS:H	1.66	0.59
1:B:303:VAL:HG13	1:B:314:SER:HB2	1.85	0.59
1:B:131:THR:CG2	1:B:133:HIS:ND1	2.65	0.59
1:B:102:ARG:HH11	1:B:102:ARG:HG3	1.68	0.59
1:D:281:GLU:N	1:D:281:GLU:OE2	2.35	0.59
1:B:300:LYS:O	1:B:300:LYS:HD2	2.02	0.59
1:A:308:GLU:H	1:A:310:TRP:H	1.50	0.59
1:D:86:LYS:HD2	1:D:87:ILE:H	1.67	0.59
1:A:55:GLU:OE2	1:A:86:LYS:HE2	2.02	0.59
1:D:287:ARG:O	1:D:290:LEU:HD12	2.03	0.58
1:B:260:LYS:HE2	1:B:290:LEU:O	2.04	0.58
1:A:194:ASN:O	1:A:195:TYR:HB2	2.02	0.58
1:B:66:ARG:HD2	1:B:66:ARG:N	2.18	0.58
1:D:134:HIS:CD2	1:D:136:ASN:HB2	2.38	0.58
1:A:203:ARG:HD2	1:B:215:ILE:HD11	1.85	0.58
1:D:305:LYS:O	1:D:311:LEU:HD12	2.04	0.58
1:B:1:MET:HE3	1:B:6:ARG:HE	1.69	0.58
1:D:97:PHE:HE2	1:D:103:MET:HE2	1.68	0.58
1:B:305:LYS:HG2	1:B:306:ARG:N	2.18	0.58
1:D:116:PHE:O	1:D:120:ILE:HG12	2.04	0.58
1:A:248:VAL:O	1:A:248:VAL:HG12	2.02	0.58
1:C:248:VAL:HG22	1:C:258:LYS:HD2	1.86	0.57
1:D:299:GLY:O	1:D:302:LYS:N	2.36	0.57
1:D:256:VAL:HG13	1:D:290:LEU:HD23	1.85	0.57
1:A:98:ALA:CA	1:A:103:MET:HB2	2.29	0.57
1:D:305:LYS:O	1:D:311:LEU:CD1	2.52	0.57

Continued on next page...

Continued from previous page...

Atom-1	Atom-2	Distance(Å)	Clash(Å)
1:A:243:LYS:HG3	1:A:244:LEU:N	2.20	0.57
1:A:194:ASN:H	1:A:194:ASN:ND2	2.01	0.57
1:B:95:ARG:HH11	1:B:95:ARG:HG3	1.70	0.57
1:C:225:LYS:HG2	1:D:280:TYR:CD2	2.40	0.57
1:B:14:LEU:HD22	1:B:18:GLU:HG3	1.86	0.57
1:A:35:VAL:HG22	1:A:188:TRP:CD1	2.39	0.57
1:D:128:CYS:HA	1:D:164:VAL:HG22	1.85	0.57
1:D:60:HIS:CD2	1:D:73:GLU:HA	2.39	0.57
1:D:272:ARG:NH2	1:D:278:LYS:NZ	2.52	0.57
1:A:14:LEU:HD13	1:A:20:ILE:HD11	1.87	0.57
1:C:7:VAL:O	1:C:11:VAL:HG23	2.05	0.57
1:C:66:ARG:HH11	1:C:66:ARG:HG3	1.70	0.57
1:C:144:LEU:HD22	1:C:148:ARG:HD2	1.86	0.57
1:B:259:LEU:HD22	1:B:267:GLN:HG2	1.87	0.56
1:A:222:THR:HG23	1:B:149:GLY:HA2	1.87	0.56
1:B:159:LEU:HB2	1:B:162:GLU:HG3	1.86	0.56
1:D:66:ARG:HG2	1:D:66:ARG:NH1	2.03	0.56
1:B:115:LYS:O	1:B:119:GLU:HG3	2.05	0.56
1:D:159:LEU:HB2	1:D:162:GLU:HG3	1.85	0.56
1:C:242:GLN:HA	1:C:242:GLN:OE1	2.06	0.56
1:C:147:THR:OG1	1:D:212:LEU:HD22	2.05	0.56
1:B:30:ALA:HB1	4:B:901:ATP:H1'	1.86	0.56
1:A:299:GLY:O	1:A:301:GLY:N	2.32	0.56
1:C:35:VAL:HG23	1:C:36:ASP:N	2.18	0.56
1:C:272:ARG:HD3	1:C:278:LYS:NZ	2.20	0.56
1:B:242:GLN:OE1	1:B:242:GLN:HA	2.05	0.56
1:D:275:ILE:HG22	1:D:304:LEU:HD11	1.88	0.56
1:B:252:ASN:ND2	1:B:313:PHE:HB2	2.19	0.56
1:C:275:ILE:HG13	1:C:277:GLU:H	1.71	0.56
1:B:120:ILE:O	1:B:124:GLU:HB2	2.06	0.56
1:A:249:LYS:HE2	1:A:251:GLY:O	2.06	0.56
1:C:193:THR:HB	1:C:202:ASN:ND2	2.21	0.56
1:D:297:ASN:ND2	1:D:299:GLY:H	2.04	0.55
1:C:268:ARG:HD2	5:C:911:HOH:O	2.06	0.55
1:D:305:LYS:HG3	1:D:306:ARG:H	1.70	0.55
1:A:254:LEU:HD22	1:A:274:PHE:CD1	2.41	0.55
1:D:258:LYS:O	1:D:262:LYS:HG2	2.06	0.55
1:A:197:VAL:HG12	1:A:197:VAL:O	2.04	0.55
1:D:287:ARG:HA	1:D:290:LEU:HD12	1.87	0.55
1:A:124:GLU:HB3	1:A:126:PHE:HE1	1.71	0.55
1:C:281:GLU:HA	1:C:281:GLU:OE1	2.06	0.55
1:D:36:ASP:OD2	1:D:37:SER:N	2.38	0.55

Continued on next page...

Continued from previous page...

Atom-1	Atom-2	Distance(Å)	Clash(Å)
1:C:194:ASN:ND2	1:C:194:ASN:H	1.99	0.55
1:A:285:LEU:HD21	1:C:307:LYS:HE2	1.87	0.55
1:D:248:VAL:HG12	1:D:249:LYS:H	1.71	0.55
1:B:131:THR:CG2	1:B:167:ARG:HG2	2.36	0.55
1:C:124:GLU:HB3	1:C:126:PHE:CE1	2.42	0.55
1:A:26:ARG:NH1	1:A:55:GLU:OE1	2.40	0.55
1:C:229:VAL:O	1:C:233:GLU:HG3	2.07	0.55
1:A:209:ILE:HB	1:A:210:PRO:HD3	1.89	0.55
1:D:308:GLU:O	1:D:310:TRP:N	2.40	0.55
1:A:303:VAL:HG13	1:A:314:SER:HB2	1.89	0.55
1:A:94:VAL:HG11	1:A:105:LEU:O	2.07	0.55
1:A:269:ARG:HH21	1:B:233:GLU:CD	2.11	0.55
1:A:64:MET:CE	1:A:91:LYS:HE2	2.36	0.54
1:B:216:ASN:ND2	1:B:219:LEU:HA	2.22	0.54
1:B:279:ASP:O	1:B:283:VAL:HG23	2.06	0.54
1:A:196:GLU:O	1:A:198:SER:N	2.40	0.54
1:B:240:GLU:OE1	1:B:240:GLU:HA	2.08	0.54
1:A:249:LYS:C	1:A:250:LYS:HD3	2.27	0.54
1:D:104:SER:HB3	1:D:107:GLU:CG	2.36	0.54
1:C:298:LEU:HD12	1:C:302:LYS:HB3	1.89	0.54
1:C:197:VAL:HG11	1:C:207:ARG:NH1	2.22	0.54
1:B:33:GLY:C	1:B:189:VAL:HG12	2.28	0.54
1:A:316:GLU:O	1:A:317:VAL:HB	2.06	0.54
1:B:305:LYS:HZ2	1:B:307:LYS:HD3	1.72	0.54
1:D:30:ALA:CB	1:D:117:LEU:HD11	2.38	0.54
1:A:246:LYS:C	1:A:248:VAL:H	2.11	0.54
1:A:196:GLU:C	1:A:198:SER:H	2.11	0.54
1:A:124:GLU:HB3	1:A:126:PHE:CE1	2.42	0.54
1:D:31:PHE:CD1	1:D:37:SER:HB3	2.43	0.54
1:A:243:LYS:HG3	1:A:244:LEU:H	1.72	0.54
1:D:255:ASP:HA	1:D:309:ARG:O	2.08	0.53
1:B:306:ARG:HA	1:B:311:LEU:HD23	1.90	0.53
1:B:134:HIS:HB2	1:B:172:VAL:O	2.08	0.53
1:C:165:ILE:N	1:C:165:ILE:HD12	2.23	0.53
1:B:300:LYS:O	1:B:300:LYS:CD	2.57	0.53
1:B:162:GLU:O	1:B:163:GLU:HB2	2.08	0.53
1:D:4:GLU:HA	1:D:180:TYR:CD1	2.44	0.53
1:D:274:PHE:C	1:D:274:PHE:CD2	2.81	0.53
1:B:266:LEU:O	1:B:269:ARG:HB2	2.09	0.53
1:D:97:PHE:O	1:D:97:PHE:CG	2.62	0.53
1:B:188:TRP:HE1	3:B:950:LYS:HE2	1.73	0.53
1:C:66:ARG:NH1	1:C:66:ARG:HG3	2.24	0.53

Continued on next page...

Continued from previous page...

Atom-1	Atom-2	Distance(Å)	Clash(Å)
1:B:26:ARG:NH2	1:B:55:GLU:OE2	2.41	0.53
1:A:192:GLU:HG2	1:A:194:ASN:OD1	2.09	0.53
1:D:248:VAL:HG11	1:D:254:LEU:HG	1.91	0.53
1:B:290:LEU:CD2	1:B:311:LEU:HD12	2.34	0.53
1:A:248:VAL:CG1	1:A:248:VAL:O	2.56	0.53
1:A:222:THR:HG23	1:B:149:GLY:CA	2.38	0.52
1:B:14:LEU:HD13	1:B:20:ILE:CG1	2.38	0.52
1:C:139:LEU:HD22	1:C:143:LEU:HD22	1.91	0.52
1:D:289:LEU:HD11	1:D:296:VAL:HG22	1.91	0.52
1:C:194:ASN:HA	1:C:206:HIS:CD2	2.44	0.52
1:D:201:ARG:HG2	1:D:201:ARG:HH11	1.74	0.52
1:C:24:GLU:OE1	1:C:24:GLU:N	2.33	0.52
1:A:240:GLU:O	1:A:243:LYS:CG	2.56	0.52
1:D:161:LYS:HE3	1:D:166:ARG:NH2	2.25	0.52
1:B:163:GLU:O	1:B:166:ARG:NH1	2.43	0.52
1:D:257:LYS:CG	1:D:257:LYS:O	2.58	0.52
1:D:116:PHE:HA	1:D:119:GLU:HB2	1.92	0.52
1:C:167:ARG:HG2	1:C:167:ARG:HH11	1.74	0.52
1:D:121:LEU:HD12	1:D:126:PHE:CB	2.38	0.52
1:D:257:LYS:HG2	1:D:257:LYS:O	2.10	0.52
1:A:194:ASN:O	1:A:195:TYR:CB	2.56	0.51
1:D:193:THR:HB	1:D:196:GLU:OE2	2.10	0.51
1:A:35:VAL:HG23	5:A:912:HOH:O	2.10	0.51
1:A:134:HIS:HD2	1:A:136:ASN:H	1.58	0.51
1:B:35:VAL:HG13	1:B:188:TRP:CD2	2.45	0.51
1:C:63:HIS:CD2	1:C:65:LEU:H	2.28	0.51
1:D:251:GLY:C	1:D:253:CYS:N	2.64	0.51
1:A:175:SER:O	1:A:179:GLU:HG3	2.10	0.51
1:D:86:LYS:HG3	1:D:88:PHE:CE1	2.46	0.51
1:B:34:GLY:HA2	1:B:189:VAL:HG12	1.91	0.51
1:A:194:ASN:N	1:A:194:ASN:ND2	2.57	0.51
1:B:139:LEU:HD22	1:B:143:LEU:CD2	2.38	0.51
1:A:26:ARG:NH2	1:A:55:GLU:OE1	2.44	0.51
1:C:285:LEU:HD12	1:C:296:VAL:CG1	2.40	0.51
1:B:139:LEU:O	1:B:143:LEU:HD23	2.11	0.51
1:A:64:MET:SD	1:A:91:LYS:HG2	2.50	0.51
1:D:104:SER:O	1:D:108:ALA:N	2.43	0.50
1:D:66:ARG:CG	1:D:66:ARG:NH1	2.65	0.50
1:D:63:HIS:O	1:D:65:LEU:N	2.43	0.50
1:D:267:GLN:O	1:D:271:ILE:HG12	2.11	0.50
1:D:306:ARG:CG	1:D:308:GLU:OE2	2.58	0.50
1:D:187:ARG:CG	1:D:187:ARG:NH1	2.66	0.50

Continued on next page...

Continued from previous page...

Atom-1	Atom-2	Distance(Å)	Clash(Å)
1:A:14:LEU:HD13	1:A:20:ILE:CG1	2.42	0.50
1:B:93:ASP:O	1:B:94:VAL:C	2.50	0.50
1:C:62:ASN:ND2	1:C:69:ALA:HB1	2.26	0.50
1:A:191:ASP:O	1:A:194:ASN:CG	2.49	0.50
1:D:88:PHE:CE2	1:D:124:GLU:HG3	2.47	0.50
1:D:193:THR:O	1:D:196:GLU:HG3	2.12	0.50
1:D:67:GLU:HG2	1:D:68:SER:N	2.27	0.50
1:B:97:PHE:HE2	1:B:103:MET:CE	2.23	0.49
1:D:272:ARG:HG2	1:D:277:GLU:O	2.12	0.49
1:A:62:ASN:HD22	1:A:64:MET:H	1.58	0.49
1:B:309:ARG:HD2	1:B:310:TRP:NE1	2.26	0.49
1:C:75:PHE:CZ	1:C:188:TRP:HA	2.48	0.49
1:D:113:ARG:NH1	4:D:903:ATP:O4'	2.45	0.49
1:A:131:THR:HG22	1:A:132:ALA:N	2.26	0.49
1:D:308:GLU:C	1:D:310:TRP:H	2.16	0.49
1:A:65:LEU:CA	1:A:95:ARG:NH2	2.73	0.49
1:C:273:LYS:HD3	1:C:273:LYS:O	2.12	0.49
1:B:25:ARG:CD	1:B:54:LYS:HG3	2.43	0.49
1:A:66:ARG:N	1:A:66:ARG:HD2	2.27	0.49
1:B:306:ARG:HG2	1:B:307:LYS:O	2.12	0.49
1:A:63:HIS:CG	1:A:65:LEU:HG	2.47	0.49
1:C:36:ASP:OD2	1:C:36:ASP:N	2.43	0.49
1:D:197:VAL:CG1	1:D:203:ARG:NH1	2.76	0.49
1:B:35:VAL:HG13	1:B:188:TRP:CE2	2.48	0.49
1:A:151:GLY:O	1:A:155:LEU:HG	2.13	0.49
1:B:131:THR:HG21	1:B:167:ARG:HH11	1.76	0.49
3:B:950:LYS:HG3	3:B:950:LYS:OXT	2.13	0.49
1:D:177:ILE:O	1:D:180:TYR:HB3	2.13	0.49
1:B:281:GLU:N	1:B:281:GLU:OE1	2.46	0.49
1:B:248:VAL:HG13	1:B:255:ASP:HB3	1.94	0.49
1:A:117:LEU:HB3	1:A:129:ILE:HD13	1.94	0.48
1:C:259:LEU:HD21	1:C:267:GLN:HA	1.95	0.48
1:A:304:LEU:HA	1:A:312:CYS:O	2.13	0.48
1:D:25:ARG:HB3	1:D:54:LYS:HD2	1.95	0.48
1:B:66:ARG:NE	1:B:66:ARG:HA	2.28	0.48
1:B:24:GLU:OE2	1:B:166:ARG:NH2	2.42	0.48
1:C:97:PHE:CG	1:C:112:LEU:HD11	2.47	0.48
1:D:305:LYS:CG	1:D:306:ARG:N	2.75	0.48
1:D:254:LEU:O	1:D:310:TRP:HA	2.13	0.48
1:A:304:LEU:N	1:A:304:LEU:HD12	2.28	0.48
1:D:59:ALA:HA	1:D:88:PHE:O	2.13	0.48
1:B:271:ILE:HB	1:B:283:VAL:HG13	1.95	0.48

Continued on next page...

Continued from previous page...

Atom-1	Atom-2	Distance(Å)	Clash(Å)
1:A:180:TYR:C	1:A:180:TYR:CD2	2.86	0.48
1:B:305:LYS:NZ	1:B:307:LYS:HE3	2.28	0.48
1:A:14:LEU:HD13	1:A:20:ILE:HG13	1.96	0.48
1:A:75:PHE:CZ	1:A:188:TRP:HA	2.49	0.48
1:A:116:PHE:O	1:A:119:GLU:HB2	2.14	0.48
1:C:260:LYS:HE2	1:C:290:LEU:O	2.12	0.48
1:C:252:ASN:HD21	1:C:313:PHE:CB	2.23	0.48
1:D:73:GLU:O	1:D:76:CYS:HB2	2.13	0.48
1:A:159:LEU:HB2	1:A:162:GLU:HG3	1.95	0.48
1:D:248:VAL:HG13	1:D:255:ASP:H	1.79	0.48
1:C:275:ILE:HA	1:C:313:PHE:HZ	1.78	0.48
1:C:81:LYS:HD3	1:C:81:LYS:C	2.34	0.48
1:C:279:ASP:OD1	1:C:282:LYS:HD2	2.13	0.48
1:A:115:LYS:O	1:A:119:GLU:HG3	2.13	0.48
1:B:290:LEU:HD23	1:B:311:LEU:CD1	2.36	0.47
1:C:275:ILE:HG21	1:C:286:VAL:HG21	1.96	0.47
1:D:134:HIS:HD2	1:D:136:ASN:N	2.09	0.47
1:A:62:ASN:HD22	1:A:62:ASN:C	2.17	0.47
1:B:103:MET:C	1:B:104:SER:O	2.52	0.47
1:B:25:ARG:HD2	1:B:54:LYS:NZ	2.28	0.47
1:A:113:ARG:O	1:A:117:LEU:HG	2.13	0.47
1:D:296:VAL:O	1:D:296:VAL:HG23	2.14	0.47
1:A:255:ASP:OD1	1:A:258:LYS:HG3	2.14	0.47
1:D:293:GLY:HA2	1:D:306:ARG:HB2	1.96	0.47
1:C:139:LEU:HD23	1:C:223:PHE:CD1	2.50	0.47
1:C:20:ILE:HD11	1:C:160:PRO:HB2	1.97	0.47
1:A:93:ASP:O	1:A:94:VAL:C	2.53	0.47
1:B:280:TYR:HD2	1:B:281:GLU:OE1	1.98	0.47
1:A:14:LEU:HD13	1:A:20:ILE:CD1	2.44	0.47
1:D:102:ARG:NH1	1:D:102:ARG:HG3	2.29	0.47
1:A:209:ILE:O	1:A:213:LYS:HG3	2.14	0.47
1:A:211:GLU:OE2	1:A:214:ARG:NH1	2.48	0.47
1:B:197:VAL:HG12	1:B:197:VAL:O	2.14	0.47
1:A:243:LYS:O	1:A:247:GLU:HB2	2.15	0.47
1:A:303:VAL:CG1	1:A:314:SER:HB2	2.45	0.47
1:A:205:ARG:HA	1:A:209:ILE:HD12	1.96	0.47
1:D:248:VAL:CG1	1:D:254:LEU:HG	2.46	0.46
1:D:193:THR:HA	1:D:196:GLU:HG3	1.96	0.46
1:A:64:MET:HE3	1:A:91:LYS:HE2	1.96	0.46
1:A:131:THR:HG23	4:A:900:ATP:H4'	1.96	0.46
1:B:197:VAL:HG13	1:B:203:ARG:HA	1.97	0.46
1:C:279:ASP:O	1:C:283:VAL:HG23	2.15	0.46

Continued on next page...

Continued from previous page...

Atom-1	Atom-2	Distance(Å)	Clash(Å)
1:B:73:GLU:O	1:B:76:CYS:HB2	2.15	0.46
1:D:249:LYS:HG2	1:D:249:LYS:O	2.13	0.46
1:D:114:TYR:O	1:D:118:LYS:HE2	2.15	0.46
1:B:38:VAL:HG13	1:B:79:PHE:CZ	2.50	0.46
1:A:250:LYS:N	1:A:250:LYS:CD	2.75	0.46
1:B:197:VAL:CG1	1:B:207:ARG:HH11	2.23	0.46
1:D:39:VAL:O	1:D:43:VAL:HG23	2.14	0.46
1:C:309:ARG:HG2	1:C:309:ARG:O	2.15	0.46
1:C:139:LEU:HD13	1:C:209:ILE:CD1	2.46	0.46
1:C:97:PHE:HE2	1:C:103:MET:HE1	1.81	0.46
1:A:285:LEU:HD13	1:A:296:VAL:CG1	2.46	0.46
1:B:258:LYS:O	1:B:262:LYS:HD3	2.15	0.46
1:D:281:GLU:O	1:D:285:LEU:HB2	2.16	0.46
1:B:242:GLN:OE1	1:B:273:LYS:HE3	2.16	0.46
1:D:201:ARG:NH1	1:D:201:ARG:HG2	2.30	0.46
1:C:194:ASN:ND2	1:C:194:ASN:N	2.60	0.46
1:C:62:ASN:HD21	1:C:69:ALA:HB1	1.81	0.46
1:B:281:GLU:H	1:B:281:GLU:CD	2.18	0.46
1:B:305:LYS:HE3	1:B:307:LYS:HG2	1.98	0.45
1:D:27:VAL:CG2	1:D:53:LEU:HD22	2.46	0.45
1:A:226:MET:O	1:A:230:LEU:HG	2.16	0.45
1:D:62:ASN:C	1:D:62:ASN:HD22	2.20	0.45
1:D:307:LYS:O	1:D:308:GLU:C	2.54	0.45
1:B:289:LEU:HB3	1:B:311:LEU:CD2	2.38	0.45
1:D:30:ALA:HB2	1:D:117:LEU:HD11	1.98	0.45
1:C:248:VAL:HG12	1:C:248:VAL:O	2.15	0.45
1:B:163:GLU:HB3	1:B:164:VAL:H	1.30	0.45
1:D:300:LYS:HE3	1:D:300:LYS:HB2	1.58	0.45
1:D:254:LEU:HD22	1:D:274:PHE:CE1	2.51	0.45
1:A:150:THR:OG1	1:A:151:GLY:N	2.47	0.45
1:C:159:LEU:O	1:C:167:ARG:NH1	2.49	0.45
1:D:272:ARG:CZ	1:D:278:LYS:HD3	2.45	0.45
1:A:194:ASN:HD22	1:A:194:ASN:N	2.14	0.45
1:D:267:GLN:HG2	1:D:287:ARG:HD2	1.99	0.45
1:B:102:ARG:NH1	1:B:102:ARG:HG3	2.29	0.45
1:A:140:GLU:HG3	1:A:209:ILE:HD11	1.98	0.45
1:D:306:ARG:HD3	1:D:308:GLU:OE2	2.16	0.45
1:B:97:PHE:CE2	1:B:103:MET:CE	2.99	0.45
1:D:275:ILE:HD11	1:D:277:GLU:HB2	1.99	0.45
1:B:281:GLU:N	1:B:281:GLU:CD	2.70	0.45
1:A:5:SER:O	1:A:9:ARG:HB2	2.17	0.45
1:A:131:THR:CG2	1:A:132:ALA:N	2.80	0.45

Continued on next page...

Continued from previous page...

Atom-1	Atom-2	Distance(Å)	Clash(Å)
1:A:20:ILE:CG2	1:A:166:ARG:HG3	2.45	0.45
1:D:75:PHE:CZ	1:D:188:TRP:HA	2.51	0.45
1:A:83:ARG:CB	1:A:85:MET:HG3	2.47	0.45
1:D:254:LEU:CD2	1:D:311:LEU:HD23	2.46	0.45
1:A:243:LYS:CG	1:A:244:LEU:N	2.80	0.45
1:D:164:VAL:HG22	1:D:164:VAL:O	2.17	0.45
1:B:152:LEU:HA	1:B:152:LEU:HD23	1.84	0.45
1:D:104:SER:OG	1:D:105:LEU:N	2.50	0.45
1:D:274:PHE:HD2	1:D:274:PHE:C	2.21	0.45
1:A:95:ARG:O	1:A:99:LYS:HB2	2.17	0.45
1:B:88:PHE:CZ	1:B:124:GLU:HG2	2.52	0.45
1:B:134:HIS:HD2	1:B:136:ASN:H	1.65	0.45
1:B:61:PHE:CD2	1:B:63:HIS:CD2	3.05	0.45
1:B:26:ARG:CZ	1:B:55:GLU:OE2	2.65	0.45
1:B:8:ILE:HG22	1:B:12:LEU:HD22	1.99	0.45
1:B:209:ILE:N	1:B:210:PRO:CD	2.80	0.44
1:D:229:VAL:O	1:D:233:GLU:HG3	2.17	0.44
1:D:293:GLY:HA3	1:D:306:ARG:NH2	2.33	0.44
1:B:134:HIS:CD2	1:B:136:ASN:HB2	2.52	0.44
1:D:62:ASN:HB3	1:D:91:LYS:HG3	1.99	0.44
1:A:110:ARG:HH21	1:A:201:ARG:HH22	1.64	0.44
1:A:110:ARG:HH21	1:A:201:ARG:NH2	2.15	0.44
1:D:30:ALA:HB1	1:D:117:LEU:HD11	1.98	0.44
1:D:67:GLU:CG	1:D:68:SER:N	2.80	0.44
1:B:66:ARG:CD	1:B:66:ARG:N	2.81	0.44
1:C:32:SER:HB3	4:C:902:ATP:N7	2.32	0.44
1:C:272:ARG:HD3	1:C:278:LYS:HZ2	1.82	0.44
1:C:279:ASP:OD2	1:C:282:LYS:HG3	2.18	0.44
1:C:257:LYS:HD2	1:C:257:LYS:HA	1.82	0.44
1:D:29:ILE:HG23	1:D:40:LEU:HD23	1.98	0.44
1:D:272:ARG:NH2	1:D:278:LYS:HZ1	2.15	0.44
1:B:195:TYR:HB3	1:B:196:GLU:H	1.20	0.44
1:B:259:LEU:HD11	1:B:270:VAL:HG11	2.00	0.44
1:A:194:ASN:O	1:A:195:TYR:CD1	2.70	0.44
1:D:8:ILE:HG22	1:D:12:LEU:HD22	1.99	0.44
1:B:160:PRO:HD3	1:B:170:TYR:CE1	2.52	0.44
1:B:68:SER:O	1:B:69:ALA:C	2.56	0.44
1:D:64:MET:O	1:D:64:MET:HG3	2.16	0.44
1:B:277:GLU:HG2	1:B:302:LYS:HE2	1.98	0.44
1:A:26:ARG:CZ	1:A:55:GLU:OE1	2.66	0.44
1:C:97:PHE:HE2	1:C:103:MET:CE	2.31	0.44
1:D:63:HIS:C	1:D:65:LEU:N	2.71	0.44

Continued on next page...

Continued from previous page...

Atom-1	Atom-2	Distance(Å)	Clash(Å)
1:C:30:ALA:HB1	4:C:902:ATP:H1'	2.00	0.44
1:B:134:HIS:HD2	1:B:136:ASN:N	2.16	0.44
1:B:250:LYS:HB2	1:B:310:TRP:CZ3	2.53	0.44
1:D:211:GLU:O	1:D:214:ARG:HB2	2.17	0.44
1:C:165:ILE:O	1:C:166:ARG:HD3	2.18	0.43
1:A:104:SER:O	1:A:105:LEU:C	2.55	0.43
1:B:38:VAL:HG13	1:B:79:PHE:CE1	2.53	0.43
1:C:284:GLU:CD	1:C:287:ARG:HE	2.22	0.43
1:D:304:LEU:CD2	1:D:312:CYS:O	2.62	0.43
1:A:83:ARG:HB2	1:A:85:MET:HG3	1.99	0.43
1:B:144:LEU:HD22	1:B:148:ARG:NE	2.33	0.43
1:A:267:GLN:O	1:A:271:ILE:HG12	2.18	0.43
1:D:85:MET:CG	1:D:86:LYS:N	2.80	0.43
1:A:259:LEU:HD21	1:A:267:GLN:HA	2.00	0.43
1:B:292:LYS:HG2	1:B:293:GLY:O	2.18	0.43
1:D:94:VAL:HG22	1:D:112:LEU:HD12	1.99	0.43
1:B:285:LEU:HD12	1:B:296:VAL:CG2	2.49	0.43
1:B:15:GLN:OE1	1:B:20:ILE:N	2.52	0.43
1:D:293:GLY:CA	1:D:306:ARG:HB2	2.48	0.43
1:A:275:ILE:HG22	1:A:304:LEU:HD21	2.01	0.43
1:A:309:ARG:HD2	1:A:309:ARG:HH11	1.60	0.43
1:A:144:LEU:HD22	1:A:148:ARG:HD2	2.01	0.43
1:D:248:VAL:O	1:D:250:LYS:N	2.52	0.43
1:A:192:GLU:HA	1:A:194:ASN:ND2	2.33	0.43
1:A:159:LEU:HD12	1:A:162:GLU:HG2	2.00	0.43
1:D:131:THR:HG23	1:D:133:HIS:N	2.20	0.43
1:C:296:VAL:N	1:C:304:LEU:O	2.50	0.43
1:D:48:LYS:HE2	1:D:53:LEU:O	2.19	0.43
1:D:139:LEU:HD22	1:D:143:LEU:CD2	2.47	0.43
1:A:64:MET:HE2	1:A:91:LYS:HE2	2.01	0.43
1:A:1:MET:HE2	1:A:6:ARG:NH2	2.34	0.43
1:B:95:ARG:HG3	1:B:95:ARG:NH1	2.34	0.43
1:A:58:LEU:HD12	1:A:80:ALA:HB2	2.01	0.43
1:D:175:SER:O	1:D:179:GLU:HG3	2.19	0.43
1:D:272:ARG:HH21	1:D:278:LYS:HZ1	1.66	0.42
1:B:15:GLN:HA	1:B:15:GLN:OE1	2.18	0.42
1:B:188:TRP:CD1	3:B:950:LYS:HE2	2.54	0.42
1:A:196:GLU:C	1:A:198:SER:N	2.72	0.42
1:C:104:SER:N	1:C:107:GLU:OE2	2.44	0.42
1:A:25:ARG:NH1	1:A:52:SER:O	2.52	0.42
1:C:28:LEU:HD11	1:C:59:ALA:HB2	2.00	0.42
1:A:156:ILE:HD11	1:A:230:LEU:CB	2.50	0.42

Continued on next page...

Continued from previous page...

Atom-1	Atom-2	Distance(Å)	Clash(Å)
1:C:299:GLY:C	1:C:301:GLY:H	2.22	0.42
1:A:243:LYS:HD2	1:A:247:GLU:OE1	2.19	0.42
1:B:34:GLY:CA	1:B:189:VAL:HG12	2.50	0.42
1:C:139:LEU:HD13	1:C:209:ILE:HD11	2.02	0.42
1:B:275:ILE:HG13	1:B:277:GLU:H	1.85	0.42
1:A:12:LEU:HD12	1:A:12:LEU:HA	1.90	0.42
1:D:254:LEU:HD23	1:D:311:LEU:HD23	2.00	0.42
1:C:275:ILE:CG2	1:C:304:LEU:HD21	2.45	0.42
1:C:259:LEU:HD22	1:C:267:GLN:HG2	2.00	0.42
1:C:181:ALA:HB1	1:C:188:TRP:CZ3	2.55	0.42
1:D:286:VAL:CG2	1:D:298:LEU:HD11	2.50	0.42
1:D:254:LEU:HD13	1:D:274:PHE:CD1	2.54	0.42
1:A:107:GLU:HA	1:A:110:ARG:HD2	2.02	0.42
1:C:152:LEU:O	1:C:156:ILE:HG13	2.19	0.42
1:C:146:PHE:C	1:C:146:PHE:CD2	2.93	0.42
1:B:117:LEU:HB3	1:B:129:ILE:HD13	2.02	0.42
1:D:62:ASN:HD22	1:D:64:MET:N	2.10	0.42
1:D:264:LEU:HD11	1:D:287:ARG:CZ	2.49	0.42
1:D:305:LYS:HG2	1:D:306:ARG:H	1.83	0.42
1:B:248:VAL:HG22	1:B:258:LYS:HB3	2.01	0.42
1:C:103:MET:HB3	1:C:107:GLU:HG3	2.02	0.42
1:A:201:ARG:HB2	1:A:201:ARG:HH11	1.85	0.42
1:A:68:SER:O	1:A:71:ARG:N	2.53	0.42
1:D:146:PHE:CD2	1:D:146:PHE:C	2.92	0.42
1:B:114:TYR:CZ	1:B:118:LYS:NZ	2.74	0.42
1:D:282:LYS:O	1:D:286:VAL:HG23	2.20	0.41
1:A:98:ALA:HB2	1:A:108:ALA:HB3	2.02	0.41
1:C:121:LEU:HD12	1:C:126:PHE:HB2	2.01	0.41
1:D:63:HIS:HB2	1:D:65:LEU:HG	2.02	0.41
1:D:309:ARG:HG3	1:D:309:ARG:O	2.18	0.41
1:D:193:THR:O	1:D:196:GLU:HB2	2.20	0.41
1:C:121:LEU:CD1	1:C:126:PHE:O	2.69	0.41
1:D:248:VAL:HG21	1:D:259:LEU:HD23	1.93	0.41
1:B:197:VAL:HG12	1:B:203:ARG:CZ	2.50	0.41
1:C:307:LYS:HB3	1:C:308:GLU:H	1.68	0.41
1:A:197:VAL:CG1	1:A:197:VAL:O	2.68	0.41
1:D:165:ILE:HG21	1:D:167:ARG:NH1	2.35	0.41
1:A:190:GLU:N	1:A:190:GLU:CD	2.66	0.41
1:C:191:ASP:OD1	1:C:193:THR:HG23	2.20	0.41
1:A:116:PHE:O	1:A:120:ILE:HG12	2.20	0.41
1:A:285:LEU:HA	1:A:285:LEU:HD23	1.92	0.41
1:D:134:HIS:NE2	1:D:136:ASN:HB2	2.35	0.41

Continued on next page...

Continued from previous page...

Atom-1	Atom-2	Distance(Å)	Clash(Å)
1:B:25:ARG:NH1	1:B:52:SER:O	2.53	0.41
1:A:181:ALA:HA	1:A:186:LEU:HD12	2.02	0.41
1:C:55:GLU:HG3	1:C:56:VAL:N	2.35	0.41
1:A:307:LYS:C	1:A:307:LYS:CD	2.77	0.41
1:D:307:LYS:O	1:D:309:ARG:N	2.53	0.41
1:C:144:LEU:HA	1:C:144:LEU:HD23	1.89	0.41
1:B:62:ASN:ND2	1:B:62:ASN:C	2.72	0.41
1:D:14:LEU:HD13	1:D:20:ILE:HG13	2.01	0.41
1:D:194:ASN:O	1:D:195:TYR:C	2.54	0.41
1:B:42:ASP:OD1	1:B:180:TYR:OH	2.30	0.41
1:D:64:MET:O	1:D:66:ARG:N	2.54	0.41
1:D:94:VAL:CG1	1:D:108:ALA:HB3	2.51	0.41
1:B:305:LYS:HE2	1:B:305:LYS:HB3	1.83	0.41
1:D:153:ASP:CA	1:D:234:ARG:HH21	2.23	0.41
1:D:44:LEU:HD23	1:D:44:LEU:HA	1.87	0.41
1:D:164:VAL:HA	1:D:166:ARG:HH12	1.85	0.41
1:D:30:ALA:HB1	4:D:903:ATP:H1'	2.03	0.41
1:A:62:ASN:ND2	1:A:64:MET:H	2.17	0.41
1:D:4:GLU:O	1:D:8:ILE:HG12	2.21	0.41
1:B:244:LEU:HD23	1:B:266:LEU:HB3	2.03	0.41
1:B:258:LYS:HG3	1:B:262:LYS:HZ3	1.85	0.41
1:B:150:THR:OG1	1:B:151:GLY:N	2.54	0.41
1:A:66:ARG:HB3	1:A:67:GLU:H	1.73	0.41
1:D:279:ASP:OD2	1:D:282:LYS:HG3	2.21	0.41
1:A:272:ARG:CG	1:A:278:LYS:HD2	2.51	0.41
1:D:144:LEU:HD21	1:D:148:ARG:CZ	2.50	0.41
1:C:30:ALA:CB	4:C:902:ATP:H1'	2.51	0.40
1:A:134:HIS:HB2	1:A:172:VAL:O	2.21	0.40
1:D:7:VAL:O	1:D:11:VAL:HG23	2.21	0.40
1:B:204:ILE:HA	1:B:208:VAL:HB	2.03	0.40
1:C:32:SER:HB3	4:C:902:ATP:C5	2.56	0.40
1:D:102:ARG:NH1	1:D:102:ARG:CG	2.84	0.40
1:D:14:LEU:HD23	1:D:171:TYR:CE1	2.56	0.40
1:A:105:LEU:HG	1:A:105:LEU:H	1.68	0.40
1:A:165:ILE:O	1:A:166:ARG:HD3	2.22	0.40
1:C:97:PHE:CE2	1:C:101:ASN:ND2	2.89	0.40
1:D:28:LEU:O	1:D:129:ILE:HA	2.21	0.40
1:D:112:LEU:O	1:D:115:LYS:HB3	2.21	0.40
1:D:39:VAL:HG13	1:D:180:TYR:CD2	2.57	0.40
1:B:61:PHE:HD2	1:B:63:HIS:CD2	2.40	0.40

There are no symmetry-related clashes.

5.3 Torsion angles

5.3.1 Protein backbone ⓘ

In the following table, the Percentiles column shows the percent Ramachandran outliers of the chain as a percentile score with respect to all X-ray entries followed by that with respect to entries of similar resolution. The Analysed column shows the number of residues for which the backbone conformation was analysed, and the total number of residues.

Mol	Chain	Analysed	Favoured	Allowed	Outliers	Percentiles	
1	A	315/317 (99%)	284 (90%)	24 (8%)	7 (2%)	10	15
1	B	312/317 (98%)	284 (91%)	20 (6%)	8 (3%)	8	11
1	C	312/317 (98%)	296 (95%)	14 (4%)	2 (1%)	33	55
1	D	311/317 (98%)	272 (88%)	31 (10%)	8 (3%)	8	11
All	All	1250/1268 (99%)	1136 (91%)	89 (7%)	25 (2%)	11	17

All (25) Ramachandran outliers are listed below:

Mol	Chain	Res	Type
1	A	195	TYR
1	A	197	VAL
1	A	308	GLU
1	B	195	TYR
1	B	196	GLU
1	D	249	LYS
1	D	307	LYS
1	A	106	GLU
1	A	300	LYS
1	B	255	ASP
1	B	300	LYS
1	D	64	MET
1	D	248	VAL
1	D	300	LYS
1	D	309	ARG
1	A	194	ASN
1	A	251	GLY
1	C	257	LYS
1	B	69	ALA
1	D	59	ALA
1	B	94	VAL
1	B	101	ASN
1	B	104	SER
1	D	308	GLU

Continued on next page...

Continued from previous page...

Mol	Chain	Res	Type
1	C	256	VAL

5.3.2 Protein sidechains ⓘ

In the following table, the Percentiles column shows the percent sidechain outliers of the chain as a percentile score with respect to all X-ray entries followed by that with respect to entries of similar resolution. The Analysed column shows the number of residues for which the sidechain conformation was analysed, and the total number of residues.

Mol	Chain	Analysed	Rotameric	Outliers	Percentiles	
1	A	285/285 (100%)	254 (89%)	31 (11%)	9	16
1	B	282/285 (99%)	253 (90%)	29 (10%)	10	19
1	C	282/285 (99%)	255 (90%)	27 (10%)	12	22
1	D	281/285 (99%)	250 (89%)	31 (11%)	9	16
All	All	1130/1140 (99%)	1012 (90%)	118 (10%)	10	18

All (118) residues with a non-rotameric sidechain are listed below:

Mol	Chain	Res	Type
1	A	8	ILE
1	A	12	LEU
1	A	14	LEU
1	A	35	VAL
1	A	62	ASN
1	A	63	HIS
1	A	66	ARG
1	A	67	GLU
1	A	103	MET
1	A	139	LEU
1	A	143	LEU
1	A	144	LEU
1	A	164	VAL
1	A	166	ARG
1	A	180	TYR
1	A	190	GLU
1	A	194	ASN
1	A	195	TYR
1	A	196	GLU
1	A	201	ARG
1	A	207	ARG

Continued on next page...

Continued from previous page...

Mol	Chain	Res	Type
1	A	222	THR
1	A	243	LYS
1	A	250	LYS
1	A	259	LEU
1	A	264	LEU
1	A	305	LYS
1	A	306	ARG
1	A	307	LYS
1	A	309	ARG
1	A	317	VAL
1	B	12	LEU
1	B	14	LEU
1	B	35	VAL
1	B	36	ASP
1	B	62	ASN
1	B	66	ARG
1	B	81	LYS
1	B	83	ARG
1	B	92	GLU
1	B	114	TYR
1	B	124	GLU
1	B	131	THR
1	B	139	LEU
1	B	144	LEU
1	B	164	VAL
1	B	182	LYS
1	B	190	GLU
1	B	193	THR
1	B	198	SER
1	B	201	ARG
1	B	222	THR
1	B	240	GLU
1	B	257	LYS
1	B	259	LEU
1	B	264	LEU
1	B	281	GLU
1	B	285	LEU
1	B	300	LYS
1	B	304	LEU
1	C	12	LEU
1	C	14	LEU
1	C	19	LYS

Continued on next page...

Continued from previous page...

Mol	Chain	Res	Type
1	C	36	ASP
1	C	62	ASN
1	C	66	ARG
1	C	74	GLU
1	C	81	LYS
1	C	92	GLU
1	C	110	ARG
1	C	119	GLU
1	C	124	GLU
1	C	139	LEU
1	C	143	LEU
1	C	144	LEU
1	C	166	ARG
1	C	167	ARG
1	C	190	GLU
1	C	194	ASN
1	C	207	ARG
1	C	222	THR
1	C	254	LEU
1	C	257	LYS
1	C	264	LEU
1	C	281	GLU
1	C	285	LEU
1	C	291	GLU
1	D	12	LEU
1	D	14	LEU
1	D	55	GLU
1	D	62	ASN
1	D	64	MET
1	D	66	ARG
1	D	71	ARG
1	D	89	VAL
1	D	92	GLU
1	D	101	ASN
1	D	114	TYR
1	D	119	GLU
1	D	131	THR
1	D	139	LEU
1	D	143	LEU
1	D	144	LEU
1	D	153	ASP
1	D	187	ARG

Continued on next page...

Continued from previous page...

Mol	Chain	Res	Type
1	D	193	THR
1	D	198	SER
1	D	252	ASN
1	D	274	PHE
1	D	279	ASP
1	D	285	LEU
1	D	290	LEU
1	D	304	LEU
1	D	305	LYS
1	D	306	ARG
1	D	307	LYS
1	D	308	GLU
1	D	313	PHE

Some sidechains can be flipped to improve hydrogen bonding and reduce clashes. All (22) such sidechains are listed below:

Mol	Chain	Res	Type
1	A	62	ASN
1	A	63	HIS
1	A	202	ASN
1	A	267	GLN
1	B	62	ASN
1	B	101	ASN
1	B	134	HIS
1	B	218	ASN
1	B	252	ASN
1	C	62	ASN
1	C	63	HIS
1	C	101	ASN
1	C	194	ASN
1	C	202	ASN
1	C	252	ASN
1	D	60	HIS
1	D	62	ASN
1	D	63	HIS
1	D	101	ASN
1	D	134	HIS
1	D	267	GLN
1	D	297	ASN

5.3.3 RNA ⓘ

There are no RNA chains in this entry.

5.4 Non-standard residues in protein, DNA, RNA chains ⓘ

There are no non-standard protein/DNA/RNA residues in this entry.

5.5 Carbohydrates ⓘ

There are no carbohydrates in this entry.

5.6 Ligand geometry ⓘ

Of 6 ligands modelled in this entry, 1 is monoatomic - leaving 5 for Mogul analysis.

In the following table, the Counts columns list the number of bonds (or angles) for which Mogul statistics could be retrieved, the number of bonds (or angles) that are observed in the model and the number of bonds (or angles) that are defined in the chemical component dictionary. The Link column lists molecule types, if any, to which the group is linked. The Z score for a bond length (or angle) is the number of standard deviations the observed value is removed from the expected value. A bond length (or angle) with $|Z| > 2$ is considered an outlier worth inspection. RMSZ is the root-mean-square of all Z scores of the bond lengths (or angles).

Mol	Type	Chain	Res	Link	Bond lengths			Bond angles		
					Counts	RMSZ	# $ Z > 2$	Counts	RMSZ	# $ Z > 2$
4	ATP	A	900	-	33,33,33	1.20	5 (15%)	52,52,52	2.20	18 (34%)
4	ATP	B	901	-	33,33,33	1.25	3 (9%)	52,52,52	2.20	18 (34%)
3	LYS	B	950	-	9,9,9	0.73	0	10,10,10	0.53	0
4	ATP	C	902	-	33,33,33	1.18	2 (6%)	52,52,52	2.19	16 (30%)
4	ATP	D	903	-	33,33,33	1.18	4 (12%)	52,52,52	2.27	19 (36%)

In the following table, the Chirals column lists the number of chiral outliers, the number of chiral centers analysed, the number of these observed in the model and the number defined in the chemical component dictionary. Similar counts are reported in the Torsion and Rings columns. '-' means no outliers of that kind were identified.

Mol	Type	Chain	Res	Link	Chirals	Torsions	Rings
4	ATP	A	900	-	-	0/22/38/38	0/1/3/3
4	ATP	B	901	-	-	0/22/38/38	0/1/3/3
3	LYS	B	950	-	-	0/9/9/9	0/0/0/0
4	ATP	C	902	-	-	0/22/38/38	0/1/3/3

Continued on next page...

Continued from previous page...

Mol	Type	Chain	Res	Link	Chirals	Torsions	Rings
4	ATP	D	903	-	-	0/22/38/38	0/1/3/3

All (14) bond length outliers are listed below:

Mol	Chain	Res	Type	Atoms	Z	Observed(Å)	Ideal(Å)
4	B	901	ATP	C4-N9	-4.43	1.31	1.37
4	C	902	ATP	C4-N9	-3.86	1.32	1.37
4	D	903	ATP	C4-N9	-3.55	1.32	1.37
4	A	900	ATP	C4-N9	-2.64	1.33	1.37
4	A	900	ATP	C5-N7	-2.31	1.31	1.40
4	D	903	ATP	C5-N7	-2.27	1.31	1.40
4	D	903	ATP	C8-N9	-2.22	1.33	1.36
4	A	900	ATP	C8-N9	-2.16	1.33	1.36
4	A	900	ATP	C4-N3	-2.15	1.32	1.35
4	B	901	ATP	O4'-C1'	2.08	1.44	1.41
4	C	902	ATP	O4'-C1'	2.06	1.44	1.41
4	B	901	ATP	C5-N7	-2.04	1.32	1.40
4	D	903	ATP	O4'-C1'	2.01	1.44	1.41
4	A	900	ATP	O4'-C1'	2.00	1.44	1.41

All (71) bond angle outliers are listed below:

Mol	Chain	Res	Type	Atoms	Z	Observed(°)	Ideal(°)
4	C	902	ATP	N3-C2-N1	-8.35	121.73	128.71
4	D	903	ATP	N3-C2-N1	-8.31	121.76	128.71
4	A	900	ATP	N3-C2-N1	-8.22	121.83	128.71
4	B	901	ATP	N3-C2-N1	-7.77	122.22	128.71
4	D	903	ATP	N3-C4-N9	4.83	134.15	125.43
4	C	902	ATP	O3A-PB-O3B	-4.77	91.96	101.66
4	B	901	ATP	N3-C4-N9	4.63	133.80	125.43
4	A	900	ATP	N3-C4-N9	4.49	133.54	125.43
4	A	900	ATP	O3A-PB-O3B	-4.30	92.91	101.66
4	D	903	ATP	O3A-PB-O3B	-4.26	92.99	101.66
4	B	901	ATP	O3A-PB-O3B	-4.11	93.31	101.66
4	C	902	ATP	N3-C4-N9	4.02	132.69	125.43
4	D	903	ATP	PB-O3B-PG	-3.99	119.99	131.68
4	B	901	ATP	O3G-PG-O1G	3.72	122.59	110.44
4	C	902	ATP	O3G-PG-O1G	3.65	122.36	110.44
4	D	903	ATP	O3G-PG-O1G	3.62	122.26	110.44
4	A	900	ATP	O3G-PG-O1G	3.58	122.16	110.44
4	B	901	ATP	PB-O3B-PG	-3.58	121.19	131.68
4	B	901	ATP	PA-O3A-PB	-3.55	121.26	131.68

Continued on next page...

Continued from previous page...

Mol	Chain	Res	Type	Atoms	Z	Observed(°)	Ideal(°)
4	A	900	ATP	PA-O3A-PB	-3.48	121.49	131.68
4	B	901	ATP	C4-C5-N7	-3.45	106.57	109.52
4	A	900	ATP	PB-O3B-PG	-3.43	121.63	131.68
4	C	902	ATP	O2G-PG-O1G	3.42	121.62	110.44
4	C	902	ATP	O2G-PG-O3B	-3.38	89.09	105.14
4	D	903	ATP	PA-O3A-PB	-3.29	122.05	131.68
4	A	900	ATP	O2G-PG-O3B	-3.27	89.64	105.14
4	D	903	ATP	O2G-PG-O1G	3.25	121.07	110.44
4	A	900	ATP	O2G-PG-O1G	3.22	120.97	110.44
4	C	902	ATP	PB-O3B-PG	-3.22	122.24	131.68
4	B	901	ATP	C5-C4-N3	-3.22	118.69	125.70
4	D	903	ATP	O2G-PG-O3B	-3.20	89.94	105.14
4	B	901	ATP	O2G-PG-O1G	3.13	120.68	110.44
4	C	902	ATP	C5-C4-N3	-3.12	118.90	125.70
4	C	902	ATP	C4-C5-N7	-3.03	106.93	109.52
4	D	903	ATP	C5-C4-N3	-2.96	119.26	125.70
4	C	902	ATP	PA-O3A-PB	-2.93	123.08	131.68
4	D	903	ATP	O3G-PG-O3B	-2.89	91.42	105.14
4	C	902	ATP	O3G-PG-O3B	-2.87	91.54	105.14
4	B	901	ATP	O3G-PG-O3B	-2.83	91.71	105.14
4	D	903	ATP	C2'-C3'-C4'	-2.83	97.02	102.65
4	A	900	ATP	O3G-PG-O3B	-2.78	91.94	105.14
4	B	901	ATP	O2B-PB-O3B	2.77	118.26	105.14
4	B	901	ATP	O2G-PG-O3B	-2.76	92.02	105.14
4	D	903	ATP	O2B-PB-O3B	2.76	118.24	105.14
4	A	900	ATP	O2B-PB-O3B	2.74	118.15	105.14
4	C	902	ATP	O2B-PB-O3B	2.51	117.04	105.14
4	D	903	ATP	C4'-O4'-C1'	-2.46	107.07	109.75
4	A	900	ATP	C5-C4-N3	-2.43	120.41	125.70
4	D	903	ATP	C2-N3-C4	2.41	120.87	114.01
4	B	901	ATP	C2-N3-C4	2.36	120.73	114.01
4	D	903	ATP	O2B-PB-O1B	2.34	125.29	112.21
4	D	903	ATP	C8-N9-C4	2.33	108.67	106.90
4	A	900	ATP	C2-N3-C4	2.31	120.59	114.01
4	A	900	ATP	O2B-PB-O1B	2.30	125.05	112.21
4	B	901	ATP	O2B-PB-O1B	2.30	125.04	112.21
4	B	901	ATP	O3B-PG-O1G	-2.28	95.39	111.00
4	C	902	ATP	C2-N3-C4	2.26	120.44	114.01
4	C	902	ATP	O2B-PB-O1B	2.23	124.68	112.21
4	B	901	ATP	C8-N9-C4	2.21	108.59	106.90
4	A	900	ATP	C8-N9-C4	2.18	108.57	106.90
4	D	903	ATP	C4-C5-N7	-2.18	107.66	109.52

Continued on next page...

Continued from previous page...

Mol	Chain	Res	Type	Atoms	Z	Observed(°)	Ideal(°)
4	A	900	ATP	O3G-PG-O2G	2.17	116.05	107.61
4	D	903	ATP	O3G-PG-O2G	2.15	116.00	107.61
4	C	902	ATP	O3B-PG-O1G	-2.13	96.44	111.00
4	B	901	ATP	O3G-PG-O2G	2.12	115.87	107.61
4	D	903	ATP	O3B-PG-O1G	-2.11	96.59	111.00
4	A	900	ATP	C2'-C3'-C4'	-2.10	98.47	102.65
4	B	901	ATP	C4'-O4'-C1'	-2.09	107.48	109.75
4	A	900	ATP	C4-C5-N7	-2.04	107.78	109.52
4	C	902	ATP	O3G-PG-O2G	2.02	115.47	107.61
4	A	900	ATP	O3B-PG-O1G	-2.02	97.22	111.00

There are no chirality outliers.

There are no torsion outliers.

There are no ring outliers.

5.7 Other polymers ⓘ

There are no such residues in this entry.

5.8 Polymer linkage issues

There are no chain breaks in this entry.

6 Fit of model and data ⓘ

6.1 Protein, DNA and RNA chains ⓘ

In the following table, the column labelled ‘#RSRZ > 2’ contains the number (and percentage) of RSRZ outliers, followed by percent RSRZ outliers for the chain as percentile scores relative to all X-ray entries and entries of similar resolution. The OWAB column contains the minimum, median, 95th percentile and maximum values of the occupancy-weighted average B-factor per residue. The column labelled ‘Q < 0.9’ lists the number of (and percentage) of residues with an average occupancy less than 0.9.

Mol	Chain	Analysed	<RSRZ>	#RSRZ>2	OWAB(Å ²)	Q<0.9
1	A	317/317 (100%)	0.48	23 (7%) 15 14	26, 46, 91, 110	0
1	B	314/317 (99%)	0.63	36 (11%) 5 5	22, 47, 88, 98	0
1	C	314/317 (99%)	0.20	17 (5%) 25 25	21, 42, 79, 85	0
1	D	313/317 (98%)	0.99	43 (13%) 4 3	29, 60, 108, 116	0
All	All	1258/1268 (99%)	0.58	119 (9%) 9 8	21, 49, 94, 116	0

All (119) RSRZ outliers are listed below:

Mol	Chain	Res	Type	RSRZ
1	D	105	LEU	11.1
1	D	305	LYS	8.2
1	A	105	LEU	8.0
1	D	99	LYS	6.3
1	D	116	PHE	6.1
1	D	311	LEU	5.8
1	D	250	LYS	5.6
1	D	64	MET	5.4
1	A	95	ARG	5.2
1	D	307	LYS	5.2
1	D	98	ALA	5.1
1	D	95	ARG	4.9
1	A	99	LYS	4.8
1	D	114	TYR	4.7
1	B	94	VAL	4.7
1	A	102	ARG	4.5
1	D	106	GLU	4.4
1	D	94	VAL	4.4
1	D	300	LYS	4.4
1	D	252	ASN	4.4
1	D	65	LEU	4.3

Continued on next page...

Continued from previous page...

Mol	Chain	Res	Type	RSRZ
1	D	306	ARG	4.2
1	A	114	TYR	4.2
1	B	300	LYS	4.2
1	D	110	ARG	4.2
1	B	301	GLY	4.1
1	D	112	LEU	4.0
1	D	257	LYS	4.0
1	A	97	PHE	3.8
1	D	102	ARG	3.7
1	C	292	LYS	3.7
1	C	307	LYS	3.6
1	D	309	ARG	3.5
1	B	97	PHE	3.5
1	D	192	GLU	3.5
1	B	102	ARG	3.5
1	A	112	LEU	3.5
1	B	290	LEU	3.5
1	C	102	ARG	3.4
1	A	196	GLU	3.4
1	B	313	PHE	3.4
1	D	259	LEU	3.4
1	B	95	ARG	3.3
1	D	91	LYS	3.2
1	B	311	LEU	3.2
1	A	100	GLU	3.2
1	D	89	VAL	3.2
1	D	1	MET	3.1
1	D	196	GLU	3.1
1	A	94	VAL	3.1
1	D	254	LEU	3.1
1	B	298	LEU	3.1
1	D	117	LEU	3.1
1	D	310	TRP	3.0
1	B	274	PHE	3.0
1	D	66	ARG	3.0
1	C	305	LYS	3.0
1	B	99	LYS	2.9
1	B	250	LYS	2.9
1	D	298	LEU	2.8
1	B	248	VAL	2.8
1	A	92	GLU	2.8
1	B	277	GLU	2.8

Continued on next page...

Continued from previous page...

Mol	Chain	Res	Type	RSRZ
1	C	289	LEU	2.8
1	B	111	PHE	2.7
1	D	97	PHE	2.7
1	D	183	PHE	2.7
1	D	274	PHE	2.7
1	D	246	LYS	2.7
1	B	261	GLU	2.6
1	A	317	VAL	2.6
1	A	191	ASP	2.6
1	B	105	LEU	2.6
1	B	103	MET	2.6
1	B	114	TYR	2.6
1	B	245	TYR	2.5
1	C	286	VAL	2.5
1	D	96	ALA	2.5
1	C	261	GLU	2.4
1	B	302	LYS	2.4
1	A	190	GLU	2.4
1	A	311	LEU	2.3
1	C	314	SER	2.3
1	D	289	LEU	2.3
1	C	298	LEU	2.3
1	B	193	THR	2.3
1	B	292	LYS	2.3
1	B	112	LEU	2.3
1	B	254	LEU	2.3
1	C	311	LEU	2.3
1	A	256	VAL	2.3
1	D	313	PHE	2.3
1	C	114	TYR	2.3
1	A	271	ILE	2.3
1	C	103	MET	2.3
1	C	217	GLU	2.3
1	B	304	LEU	2.2
1	B	1	MET	2.2
1	B	295	GLU	2.2
1	A	103	MET	2.2
1	B	309	ARG	2.2
1	A	93	ASP	2.2
1	B	93	ASP	2.2
1	D	25	ARG	2.2
1	A	300	LYS	2.2

Continued on next page...

Continued from previous page...

Mol	Chain	Res	Type	RSRZ
1	D	103	MET	2.2
1	C	257	LYS	2.2
1	B	101	ASN	2.1
1	B	262	LYS	2.1
1	D	245	TYR	2.1
1	A	111	PHE	2.1
1	B	244	LEU	2.1
1	C	296	VAL	2.1
1	C	308	GLU	2.1
1	A	246	LYS	2.1
1	B	299	GLY	2.0
1	B	257	LYS	2.0
1	C	99	LYS	2.0
1	A	193	THR	2.0

6.2 Non-standard residues in protein, DNA, RNA chains ⓘ

There are no non-standard protein/DNA/RNA residues in this entry.

6.3 Carbohydrates ⓘ

There are no carbohydrates in this entry.

6.4 Ligands ⓘ

In the following table, the Atoms column lists the number of modelled atoms in the group and the number defined in the chemical component dictionary. LLDF column lists the quality of electron density of the group with respect to its neighbouring residues in protein, DNA or RNA chains. The B-factors column lists the minimum, median, 95th percentile and maximum values of B factors of atoms in the group. The column labelled 'Q< 0.9' lists the number of atoms with occupancy less than 0.9.

Mol	Type	Chain	Res	Atoms	RSR	LLDF	B-factors(Å ²)	Q<0.9
2	MG	C	601	1/1	0.23	7.10	59,59,59,59	0
3	LYS	B	950	10/10	0.24	0.72	46,57,59,60	0
4	ATP	C	902	31/31	0.17	0.06	29,37,69,72	0
4	ATP	D	903	31/31	0.15	-0.74	75,77,81,82	0
4	ATP	B	901	31/31	0.15	-0.85	36,46,82,83	0
4	ATP	A	900	31/31	0.12	-0.85	36,53,84,86	0

6.5 Other polymers ⓘ

There are no such residues in this entry.