



# Full wwPDB X-ray Structure Validation Report

Feb 28, 2014 – 11:25 PM GMT

PDB ID : 1EAP  
Title : CRYSTAL STRUCTURE OF A CATALYTIC ANTIBODY WITH A SERINE  
PROTEASE ACTIVE SITE  
Authors : Zhou, G.W.; Guo, J.; Huang, W.; Scanlan, T.S.; Fletterick, R.J.  
Deposited on : 1994-08-10  
Resolution : 2.40 Å(reported)

This is a full wwPDB validation report for a publicly released PDB entry.  
We welcome your comments at [validation@mail.wwpdb.org](mailto:validation@mail.wwpdb.org)  
A user guide is available at <http://wwpdb.org/ValidationPDFNotes.html>

---

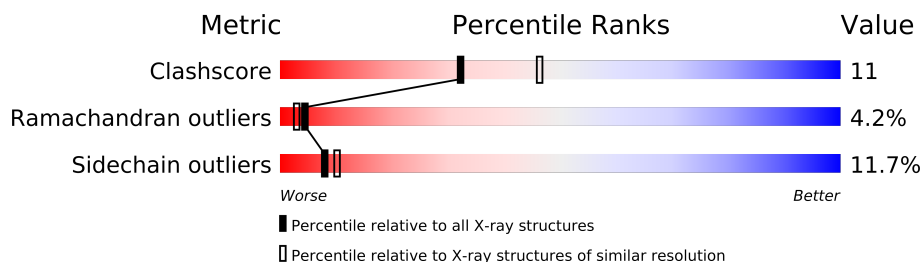
The following versions of software and data (see [references](#)) were used in the production of this report:

MolProbity : 4.02b-467  
Mogul : 1.15 2013  
Xtriage (Phenix) : **NOT EXECUTED**  
EDS : **NOT EXECUTED**  
Percentile statistics : 21963  
Ideal geometry (proteins) : Engh & Huber (2001)  
Ideal geometry (DNA, RNA) : Parkinson et. al. (1996)  
Validation Pipeline (wwPDB-VP) : stable22683

# 1 Overall quality at a glance

The reported resolution of this entry is 2.40 Å.

Percentile scores (ranging between 0-100) for global validation metrics of the entry are shown in the following graphic. The table shows the number of entries on which the scores are based.



Metric	Whole archive (#Entries)	Similar resolution (#Entries, resolution range(Å))
Clashscore	79885	2789 (2.40-2.40)
Ramachandran outliers	78287	2736 (2.40-2.40)
Sidechain outliers	78261	2737 (2.40-2.40)

The table below summarises the geometric issues observed across the polymeric chains and their fit to the electron density. The red, orange, yellow and green segments on the lower bar indicate the fraction of residues that contain outliers for  $\geq 3$ , 2, 1 and 0 types of geometric quality criteria. The upper red bar (where present) indicates the fraction of residues that have poor fit to the electron density.

Note EDS was not executed.

Mol	Chain	Length	Quality of chain
1	A	213	
2	B	216	

## 2 Entry composition

There are 3 unique types of molecules in this entry. The entry contains 3287 atoms, of which 0 are hydrogen and 0 are deuterium.

In the tables below, the ZeroOcc column contains the number of atoms modelled with zero occupancy, the AltConf column contains the number of residues with at least one atom in alternate conformation and the Trace column contains the number of residues modelled with at most 2 atoms.

- Molecule 1 is a protein called IGG2B-KAPPA 17E8 FAB (LIGHT CHAIN).

Mol	Chain	Residues	Atoms					ZeroOcc	AltConf	Trace
1	A	213	Total	C	N	O	S	0	0	0
			1655	1037	282	330	6			

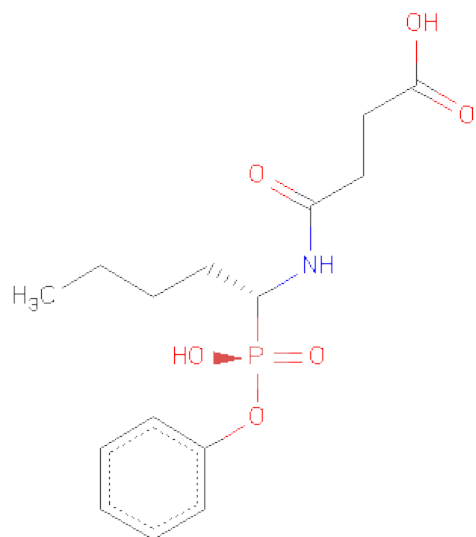
There are 13 discrepancies between the modelled and reference sequences:

Chain	Residue	Modelled	Actual	Comment	Reference
A	4	LEU	MET	CONFLICT	GB 12002896
A	22	THR	ALA	CONFLICT	GB 12002896
A	26	SER	ASN	CONFLICT	GB 12002896
A	30	LYS	ASN	CONFLICT	GB 12002896
A	34	GLY	ALA	CONFLICT	GB 12002896
A	55	LEU	GLN	CONFLICT	GB 12002896
A	63	ARG	SER	CONFLICT	GB 12002896
A	80	GLY	PRO	CONFLICT	GB 12002896
A	81	GLY	GLU	CONFLICT	GB 12002896
A	92	TYR	ASP	CONFLICT	GB 12002896
A	156	ALA	GLN	CONFLICT	GB 12002896
A	157	GLN	ASN	CONFLICT	GB 12002896
A	187	GLU	GLY	CONFLICT	GB 12002896

- Molecule 2 is a protein called IGG2B-KAPPA 17E8 FAB (HEAVY CHAIN).

Mol	Chain	Residues	Atoms					ZeroOcc	AltConf	Trace
2	B	216	Total	C	N	O	S	0	0	0
			1609	1015	260	327	7			

- Molecule 3 is PHENYL[1-(N-SUCCINYLAMINO)PENTYL]PHOSPHONATE (three-letter code: HEP) (formula: C<sub>15</sub>H<sub>22</sub>NO<sub>6</sub>P).



Mol	Chain	Residues	Atoms					ZeroOcc	AltConf
			Total	C	N	O	P		
3	B	1	23	15	1	6	1	0	0

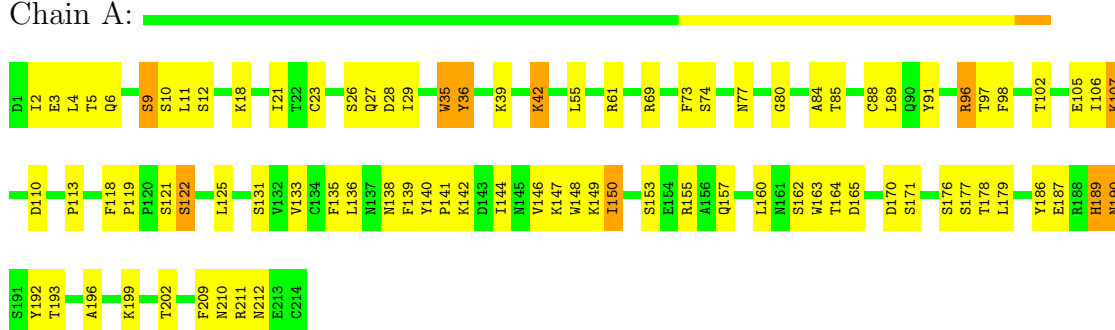
### 3 Residue-property plots

These plots are drawn for all protein, RNA and DNA chains in the entry. The first graphic for a chain summarises the proportions of errors displayed in the second graphic. The second graphic shows the sequence view annotated by issues in geometry and electron density. Residues are color-coded according to the number of geometric quality criteria for which they contain at least one outlier: green = 0, yellow = 1, orange = 2 and red = 3 or more. A red dot above a residue indicates a poor fit to the electron density ( $RSRZ > 2$ ). Stretches of 2 or more consecutive residues without any outlier are shown as a green connector. Residues present in the sample, but not in the model, are shown in grey.

Note EDS was not executed.

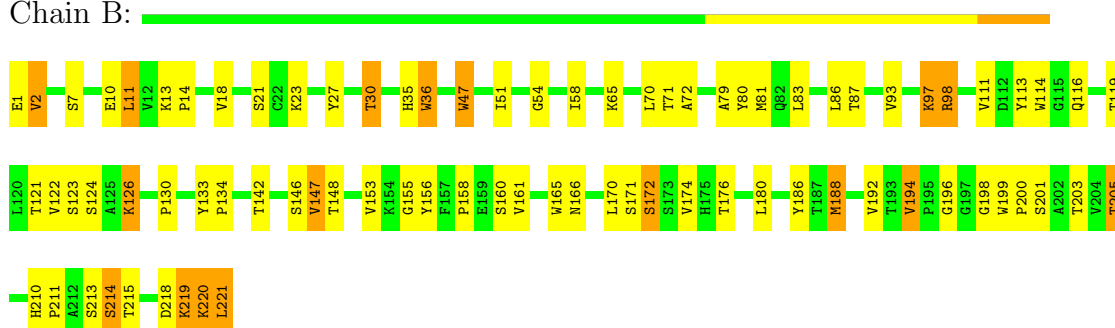
- Molecule 1: IGG2B-KAPPA 17E8 FAB (LIGHT CHAIN)

Chain A:



- Molecule 2: IGG2B-KAPPA 17E8 FAB (HEAVY CHAIN)

Chain B:



## 4 Data and refinement statistics

Xtriage (Phenix) and EDS were not executed - this section will therefore be incomplete.

Property	Value	Source
Space group	P 1 21 1	Depositor
Cell constants a, b, c, $\alpha$ , $\beta$ , $\gamma$	41.41Å 78.06Å 81.94Å 90.00° 94.94° 90.00°	Depositor
Resolution (Å)	6.00 – 2.40	Depositor
% Data completeness (in resolution range)	(Not available) (6.00-2.40)	Depositor
$R_{merge}$	(Not available)	Depositor
$R_{sym}$	(Not available)	Depositor
Refinement program	X-PLOR	Depositor
R, $R_{free}$	0.186 , (Not available)	Depositor
Estimated twinning fraction	No twinning to report.	Xtriage
Total number of atoms	3287	wwPDB-VP
Average B, all atoms (Å <sup>2</sup> )	31.0	wwPDB-VP

## 5 Model quality

### 5.1 Standard geometry

Bond lengths and bond angles in the following residue types are not validated in this section: HEP

The Z score for a bond length (or angle) is the number of standard deviations the observed value is removed from the expected value. A bond length (or angle) with  $|Z| > 5$  is considered an outlier worth inspection. RMSZ is the root-mean-square of all Z scores of the bond lengths (or angles).

Mol	Chain	Bond lengths		Bond angles	
		RMSZ	$\# Z  > 5$	RMSZ	$\# Z  > 5$
1	A	0.76	0/1693	1.57	23/2291 (1.0%)
2	B	0.84	0/1650	1.64	27/2251 (1.2%)
All	All	0.80	0/3343	1.60	50/4542 (1.1%)

Chiral center outliers are detected by calculating the chiral volume of a chiral center and verifying if the center is modelled as a planar moiety or with the opposite hand. A planarity outlier is detected by checking planarity of atoms in a peptide group, atoms in a mainchain group or atoms of a sidechain that are expected to be planar.

Mol	Chain	#Chirality outliers	#Planarity outliers
2	B	0	1

There are no bond length outliers.

All (50) bond angle outliers are listed below:

Mol	Chain	Res	Type	Atoms	Z	Observed( $^{\circ}$ )	Ideal( $^{\circ}$ )
1	A	148	TRP	CD1-CG-CD2	9.52	113.92	106.30
1	A	61	ARG	NE-CZ-NH1	8.62	124.61	120.30
1	A	163	TRP	CD1-CG-CD2	8.45	113.06	106.30
2	B	165	TRP	CD1-CG-CD2	8.32	112.95	106.30
1	A	35	TRP	CD1-CG-CD2	8.05	112.74	106.30
2	B	165	TRP	CE2-CD2-CG	-7.95	100.94	107.30
2	B	114	TRP	CD1-CG-CD2	7.89	112.61	106.30
1	A	148	TRP	CE2-CD2-CG	-7.75	101.10	107.30
2	B	47	TRP	CD1-CG-CD2	7.58	112.37	106.30
2	B	114	TRP	CE2-CD2-CG	-7.55	101.26	107.30
1	A	163	TRP	CE2-CD2-CG	-7.53	101.28	107.30
1	A	35	TRP	CE2-CD2-CG	-7.48	101.32	107.30
2	B	133	TYR	CB-CG-CD2	-7.44	116.54	121.00
2	B	36	TRP	CE2-CD2-CG	-7.42	101.36	107.30

*Continued on next page...*

*Continued from previous page...*

Mol	Chain	Res	Type	Atoms	Z	Observed(°)	Ideal(°)
2	B	36	TRP	CD1-CG-CD2	7.37	112.19	106.30
2	B	199	TRP	CD1-CG-CD2	7.36	112.18	106.30
2	B	199	TRP	CE2-CD2-CG	-7.15	101.58	107.30
1	A	96	ARG	NE-CZ-NH1	7.07	123.84	120.30
2	B	47	TRP	CE2-CD2-CG	-7.04	101.67	107.30
1	A	61	ARG	NE-CZ-NH2	-7.03	116.78	120.30
1	A	91	TYR	CB-CG-CD2	-6.99	116.81	121.00
2	B	98	ARG	NE-CZ-NH1	6.71	123.66	120.30
2	B	165	TRP	CG-CD2-CE3	6.42	139.68	133.90
1	A	4	LEU	CB-CG-CD2	-6.30	100.29	111.00
2	B	36	TRP	CG-CD2-CE3	6.20	139.48	133.90
1	A	148	TRP	CG-CD1-NE1	-6.04	104.06	110.10
2	B	188	MET	CA-CB-CG	5.94	123.39	113.30
1	A	35	TRP	CB-CG-CD1	-5.92	119.31	127.00
2	B	27	TYR	CB-CG-CD2	-5.87	117.48	121.00
2	B	114	TRP	CG-CD2-CE3	5.64	138.97	133.90
2	B	165	TRP	CG-CD1-NE1	-5.61	104.49	110.10
1	A	186	TYR	CB-CG-CD1	-5.59	117.65	121.00
1	A	9	SER	N-CA-C	-5.58	95.93	111.00
1	A	35	TRP	CG-CD2-CE3	5.56	138.90	133.90
2	B	114	TRP	CG-CD1-NE1	-5.52	104.58	110.10
2	B	165	TRP	CB-CG-CD1	-5.44	119.93	127.00
2	B	27	TYR	CA-C-N	5.41	129.09	117.20
1	A	190	ASN	N-CA-C	5.38	125.53	111.00
1	A	189	HIS	N-CA-C	5.38	125.52	111.00
2	B	221	LEU	CA-CB-CG	5.38	127.66	115.30
1	A	36	TYR	CB-CG-CD2	-5.35	117.79	121.00
1	A	80	GLY	N-CA-C	-5.31	99.83	113.10
2	B	116	GLN	CA-CB-CG	5.27	124.99	113.40
1	A	189	HIS	CA-C-N	5.22	128.69	117.20
1	A	163	TRP	CG-CD1-NE1	-5.18	104.92	110.10
2	B	214	SER	N-CA-C	-5.16	97.07	111.00
1	A	142	LYS	CA-CB-CG	5.13	124.69	113.40
2	B	80	TYR	CB-CG-CD1	-5.12	117.93	121.00
2	B	81	MET	CG-SD-CE	-5.11	92.02	100.20
2	B	23	LYS	CA-CB-CG	5.00	124.40	113.40

There are no chirality outliers.

All (1) planarity outliers are listed below:

Mol	Chain	Res	Type	Group
2	B	194	VAL	Peptide



## 5.2 Close contacts ⓘ

In the following table, the Non-H and H(model) columns list the number of non-hydrogen atoms and hydrogen atoms in the chain respectively. The H(added) column lists the number of hydrogens added by MolProbity. The Clashes column lists the number of clashes within the asymmetric unit, and the number in parentheses is this value normalized per 1000 atoms of the molecule in the chain. The Symm-Clashes column gives symmetry related clashes, in the same way as for the Clashes column.

Mol	Chain	Non-H	H(model)	H(added)	Clashes	Symm-Clashes
1	A	1655	0	1609	40	0
2	B	1609	0	1561	35	0
3	B	23	0	20	4	0
All	All	3287	0	3190	74	0

Clashscore is defined as the number of clashes calculated for the entry per 1000 atoms (including hydrogens) of the entry. The overall clashscore for this entry is 11.

All (74) close contacts within the same asymmetric unit are listed below.

Atom-1	Atom-2	Distance(Å)	Clash(Å)
2:B:153:VAL:HG11	2:B:161:VAL:HG11	1.75	0.68
1:A:39:LYS:HB2	1:A:42:LYS:HD2	1.74	0.68
2:B:147:VAL:HG23	2:B:194:VAL:HG23	1.76	0.68
1:A:136:LEU:HD23	1:A:144:ILE:HD13	1.76	0.67
2:B:203:THR:HG22	2:B:220:LYS:HB2	1.77	0.66
2:B:174:VAL:HG22	2:B:192:VAL:HG12	1.79	0.64
2:B:126:LYS:HZ3	2:B:126:LYS:HB2	1.64	0.63
1:A:122:SER:HA	1:A:125:LEU:HD23	1.81	0.61
2:B:130:PRO:HD2	2:B:215:THR:HG21	1.83	0.61
2:B:11:LEU:HG	2:B:121:THR:HG23	1.83	0.60
2:B:134:PRO:HD3	2:B:219:LYS:HG2	1.85	0.58
1:A:85:THR:HA	1:A:102:THR:O	2.05	0.55
1:A:6:GLN:HG3	1:A:23:CYS:SG	2.45	0.55
1:A:162:SER:HB3	2:B:180:LEU:HD11	1.87	0.55
2:B:158:PRO:O	2:B:210:HIS:HE1	1.90	0.54
1:A:187:GLU:HA	1:A:211:ARG:NH1	2.22	0.54
1:A:190:ASN:O	1:A:211:ARG:HB2	2.09	0.53
2:B:18:VAL:HG12	2:B:83:LEU:HB2	1.90	0.53
1:A:190:ASN:HA	1:A:211:ARG:HB2	1.90	0.53
1:A:36:TYR:HE1	1:A:89:LEU:HD23	1.74	0.53
1:A:192:TYR:HE2	1:A:211:ARG:HD3	1.74	0.52
1:A:149:LYS:HB2	1:A:193:THR:HB	1.91	0.52
2:B:30:THR:HG22	2:B:54:GLY:HA2	1.92	0.52
1:A:107:LYS:HA	1:A:140:TYR:OH	2.10	0.51

*Continued on next page...*

*Continued from previous page...*

Atom-1	Atom-2	Distance(Å)	Clash(Å)
2:B:51:ILE:HG13	2:B:58:ILE:HG13	1.93	0.51
2:B:166:ASN:HB3	2:B:170:LEU:H	1.77	0.50
1:A:6:GLN:HB2	1:A:23:CYS:SG	2.52	0.50
2:B:205:THR:HA	2:B:220:LYS:HA	1.94	0.49
1:A:2:ILE:O	1:A:97:THR:HG21	2.13	0.49
1:A:133:VAL:HG22	1:A:178:THR:OG1	2.13	0.49
1:A:2:ILE:HD13	1:A:29:ILE:HG22	1.95	0.48
1:A:35:TRP:CZ3	1:A:88:CYS:HB3	2.47	0.48
1:A:192:TYR:HB2	1:A:209:PHE:CE1	2.48	0.48
1:A:36:TYR:CE1	1:A:89:LEU:HD23	2.49	0.48
1:A:135:PHE:HE1	1:A:176:SER:HG	1.60	0.48
2:B:156:TYR:CE1	2:B:186:TYR:HB2	2.50	0.47
1:A:89:LEU:HD11	1:A:96:ARG:HB3	1.96	0.47
1:A:21:ILE:HD12	1:A:73:PHE:HD2	1.79	0.46
2:B:220:LYS:HG2	2:B:221:LEU:H	1.80	0.46
1:A:189:HIS:HB2	1:A:192:TYR:OH	2.15	0.46
1:A:96:ARG:HG3	3:B:222:HEP:H10	1.98	0.46
1:A:27:GLN:O	1:A:69:ARG:HG2	2.16	0.46
2:B:97:LYS:NZ	3:B:222:HEP:O1P	2.49	0.46
3:B:222:HEP:H21	3:B:222:HEP:H6	1.98	0.45
2:B:13:LYS:HA	2:B:14:PRO:HD3	1.82	0.45
2:B:72:ALA:HA	2:B:79:ALA:HA	1.99	0.45
1:A:160:LEU:HG	2:B:180:LEU:HD13	1.99	0.45
2:B:65:LYS:HE2	2:B:65:LYS:HB2	1.79	0.45
2:B:148:THR:HA	2:B:192:VAL:O	2.17	0.45
1:A:36:TYR:OH	3:B:222:HEP:H7	2.17	0.45
2:B:35:HIS:HB3	2:B:47:TRP:HE1	1.82	0.44
1:A:21:ILE:HB	1:A:73:PHE:HB3	1.98	0.44
1:A:12:SER:HB3	1:A:107:LYS:HB2	2.00	0.44
1:A:118:PHE:HA	1:A:119:PRO:HD2	1.75	0.43
1:A:106:ILE:HD11	1:A:171:SER:OG	2.17	0.43
1:A:136:LEU:HD21	1:A:196:ALA:HB2	2.01	0.43
1:A:131:SER:HB3	1:A:178:THR:HG23	2.01	0.43
2:B:2:VAL:HG13	2:B:113:TYR:CE1	2.54	0.43
2:B:93:VAL:HG22	2:B:119:THR:HG22	2.01	0.42
1:A:150:ILE:HD11	1:A:155:ARG:HD2	2.01	0.42
2:B:2:VAL:HG21	2:B:98:ARG:NH1	2.35	0.42
2:B:146:SER:HA	2:B:196:GLY:C	2.40	0.42
1:A:113:PRO:HB3	1:A:139:PHE:CD2	2.55	0.42
2:B:36:TRP:CD1	2:B:70:LEU:HD22	2.55	0.41
2:B:219:LYS:HD3	2:B:219:LYS:HA	1.85	0.41
2:B:111:VAL:HG13	2:B:113:TYR:CE2	2.55	0.41

*Continued on next page...*

*Continued from previous page...*

Atom-1	Atom-2	Distance(Å)	Clash(Å)
1:A:89:LEU:HD22	1:A:98:PHE:CE2	2.56	0.41
1:A:110:ASP:OD1	1:A:141:PRO:HD3	2.21	0.41
1:A:190:ASN:HA	1:A:211:ARG:CB	2.52	0.40
2:B:14:PRO:HD3	2:B:123:SER:C	2.42	0.40
2:B:87:THR:O	2:B:122:VAL:HG11	2.20	0.40
2:B:86:LEU:HB3	2:B:122:VAL:HG21	2.03	0.40
1:A:39:LYS:HG2	1:A:84:ALA:HB2	2.03	0.40
2:B:2:VAL:HG21	2:B:98:ARG:HH11	1.87	0.40

There are no symmetry-related clashes.

## 5.3 Torsion angles

### 5.3.1 Protein backbone ⓘ

In the following table, the Percentiles column shows the percent Ramachandran outliers of the chain as a percentile score with respect to all X-ray entries followed by that with respect to entries of similar resolution. The Analysed column shows the number of residues for which the backbone conformation was analysed, and the total number of residues.

Mol	Chain	Analysed	Favoured	Allowed	Outliers	Percentiles	
1	A	211/213 (99%)	185 (88%)	18 (8%)	8 (4%)	5	4
2	B	214/216 (99%)	185 (86%)	19 (9%)	10 (5%)	4	2
All	All	425/429 (99%)	370 (87%)	37 (9%)	18 (4%)	4	3

All (18) Ramachandran outliers are listed below:

Mol	Chain	Res	Type
1	A	121	SER
2	B	160	SER
2	B	213	SER
1	A	10	SER
1	A	150	ILE
2	B	172	SER
2	B	205	THR
2	B	211	PRO
2	B	214	SER
1	A	138	ASN
1	A	170	ASP
1	A	199	LYS

*Continued on next page...*

*Continued from previous page...*

Mol	Chain	Res	Type
2	B	201	SER
1	A	122	SER
1	A	212	ASN
2	B	155	GLY
2	B	198	GLY
2	B	200	PRO

### 5.3.2 Protein sidechains ⓘ

In the following table, the Percentiles column shows the percent sidechain outliers of the chain as a percentile score with respect to all X-ray entries followed by that with respect to entries of similar resolution. The Analysed column shows the number of residues for which the sidechain conformation was analysed, and the total number of residues.

Mol	Chain	Analysed	Rotameric	Outliers	Percentiles	
1	A	186/186 (100%)	163 (88%)	23 (12%)	7	8
2	B	182/182 (100%)	162 (89%)	20 (11%)	9	12
All	All	368/368 (100%)	325 (88%)	43 (12%)	8	10

All (43) residues with a non-rotameric sidechain are listed below:

Mol	Chain	Res	Type
1	A	3	GLU
1	A	5	THR
1	A	9	SER
1	A	11	LEU
1	A	18	LYS
1	A	26	SER
1	A	28	ASP
1	A	42	LYS
1	A	55	LEU
1	A	74	SER
1	A	77	ASN
1	A	105	GLU
1	A	107	LYS
1	A	146	VAL
1	A	147	LYS
1	A	153	SER
1	A	157	GLN
1	A	164	THR
1	A	165	ASP

*Continued on next page...*

*Continued from previous page...*

Mol	Chain	Res	Type
1	A	177	SER
1	A	179	LEU
1	A	202	THR
1	A	210	ASN
2	B	1	GLU
2	B	2	VAL
2	B	7	SER
2	B	10	GLU
2	B	11	LEU
2	B	21	SER
2	B	30	THR
2	B	71	THR
2	B	97	LYS
2	B	124	SER
2	B	126	LYS
2	B	142	THR
2	B	147	VAL
2	B	171	SER
2	B	172	SER
2	B	176	THR
2	B	188	MET
2	B	218	ASP
2	B	219	LYS
2	B	220	LYS

Some sidechains can be flipped to improve hydrogen bonding and reduce clashes. All (4) such sidechains are listed below:

Mol	Chain	Res	Type
1	A	124	GLN
1	A	161	ASN
2	B	35	HIS
2	B	74	GLN

### 5.3.3 RNA ⓘ

There are no RNA chains in this entry.

## 5.4 Non-standard residues in protein, DNA, RNA chains ⓘ

There are no non-standard protein/DNA/RNA residues in this entry.

## 5.5 Carbohydrates ⓘ

There are no carbohydrates in this entry.

## 5.6 Ligand geometry ⓘ

1 ligand is modelled in this entry.

In the following table, the Counts columns list the number of bonds (or angles) for which Mogul statistics could be retrieved, the number of bonds (or angles) that are observed in the model and the number of bonds (or angles) that are defined in the chemical component dictionary. The Link column lists molecule types, if any, to which the group is linked. The Z score for a bond length (or angle) is the number of standard deviations the observed value is removed from the expected value. A bond length (or angle) with  $|Z| > 2$  is considered an outlier worth inspection. RMSZ is the root-mean-square of all Z scores of the bond lengths (or angles).

Mol	Type	Chain	Res	Link	Bond lengths			Bond angles		
					Counts	RMSZ	$\# Z  > 2$	Counts	RMSZ	$\# Z  > 2$
3	HEP	B	222	-	23,23,23	1.81	2 (8%)	30,30,30	1.55	6 (20%)

In the following table, the Chirals column lists the number of chiral outliers, the number of chiral centers analysed, the number of these observed in the model and the number defined in the chemical component dictionary. Similar counts are reported in the Torsion and Rings columns. '-' means no outliers of that kind were identified.

Mol	Type	Chain	Res	Link	Chirals	Torsions	Rings
3	HEP	B	222	-	-	0/24/24/24	0/1/1/1

All (2) bond length outliers are listed below:

Mol	Chain	Res	Type	Atoms	Z	Observed(Å)	Ideal(Å)
3	B	222	HEP	P-C1	-6.58	1.73	1.83
3	B	222	HEP	P-O2P	-4.17	1.49	1.56

All (6) bond angle outliers are listed below:

Mol	Chain	Res	Type	Atoms	Z	Observed(°)	Ideal(°)
3	B	222	HEP	C14-C12-N1	-3.89	108.44	115.83
3	B	222	HEP	P-C1-C2	-3.24	106.30	111.73
3	B	222	HEP	O3P-P-O1P	-3.03	108.12	114.79
3	B	222	HEP	O2P-P-O1P	2.86	117.54	110.45
3	B	222	HEP	C13-C14-C12	2.47	116.26	112.65
3	B	222	HEP	O1P-P-C1	-2.39	108.66	113.78

There are no chirality outliers.

There are no torsion outliers.

There are no ring outliers.

## 5.7 Other polymers ⓘ

There are no such residues in this entry.

## 5.8 Polymer linkage issues

There are no chain breaks in this entry.

## 6 Fit of model and data

### 6.1 Protein, DNA and RNA chains

EDS was not executed - this section will therefore be empty.

### 6.2 Non-standard residues in protein, DNA, RNA chains

EDS was not executed - this section will therefore be empty.

### 6.3 Carbohydrates

EDS was not executed - this section will therefore be empty.

### 6.4 Ligands

EDS was not executed - this section will therefore be empty.

### 6.5 Other polymers

EDS was not executed - this section will therefore be empty.