



# Full wwPDB X-ray Structure Validation Report ⓘ

Feb 28, 2014 – 05:06 AM GMT

PDB ID : 4EA9  
Title : X-ray structure of GDP-perosamine N-acetyltransferase in complex with transition state analog at 0.9 Angstrom resolution  
Authors : Thoden, J.B.; Reinhardt, L.A.; Cook, P.D.; Menden, P.; Cleland, W.W.; Holden, H.M.  
Deposited on : 2012-03-22  
Resolution : 0.90 Å(reported)

This is a full wwPDB validation report for a publicly released PDB entry.  
We welcome your comments at [validation@mail.wwpdb.org](mailto:validation@mail.wwpdb.org)  
A user guide is available at <http://wwpdb.org/ValidationPDFNotes.html>

---

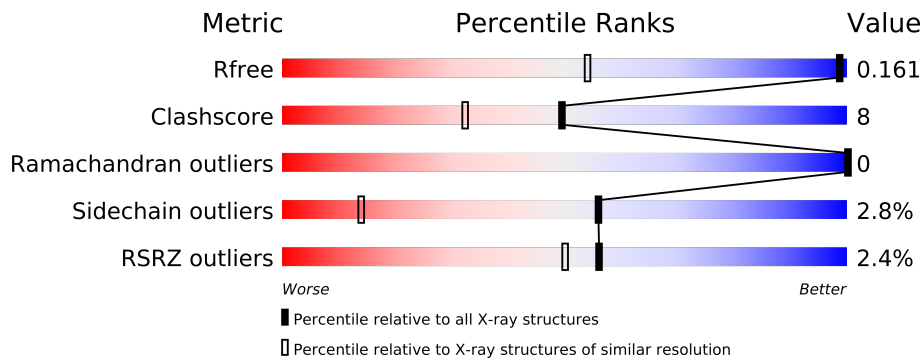
The following versions of software and data (see [references](#)) were used in the production of this report:

MolProbity : 4.02b-467  
Mogul : 1.15 2013  
Xtriage (Phenix) : dev-1323  
EDS : stable22639  
Percentile statistics : 21963  
Refmac : 5.8.0049  
CCP4 : 6.3.0 (Settle)  
Ideal geometry (proteins) : Engh & Huber (2001)  
Ideal geometry (DNA, RNA) : Parkinson et. al. (1996)  
Validation Pipeline (wwPDB-VP) : stable22683

# 1 Overall quality at a glance

The reported resolution of this entry is 0.90 Å.

Percentile scores (ranging between 0-100) for global validation metrics of the entry are shown in the following graphic. The table shows the number of entries on which the scores are based.



Metric	Whole archive (#Entries)	Similar resolution (#Entries, resolution range(Å))
$R_{free}$	66092	1081 (1.12-0.70)
Clashscore	79885	1122 (1.10-0.70)
Ramachandran outliers	78287	1047 (1.10-0.70)
Sidechain outliers	78261	1046 (1.10-0.70)
RSRZ outliers	66119	1081 (1.12-0.70)

The table below summarises the geometric issues observed across the polymeric chains and their fit to the electron density. The red, orange, yellow and green segments on the lower bar indicate the fraction of residues that contain outliers for  $\geq 3$ , 2, 1 and 0 types of geometric quality criteria. The upper red bar (where present) indicates the fraction of residues that have poor fit to the electron density.

Mol	Chain	Length	Quality of chain
1	A	220	

The following table lists non-polymeric compounds that are outliers for geometric or electron-density-fit criteria:

Mol	Type	Chain	Res	Geometry	Electron density
3	CL	A	1002[C]	-	X

## 2 Entry composition i

There are 4 unique types of molecules in this entry. The entry contains 1929 atoms, of which 0 are hydrogen and 0 are deuterium.

In the tables below, the ZeroOcc column contains the number of atoms modelled with zero occupancy, the AltConf column contains the number of residues with at least one atom in alternate conformation and the Trace column contains the number of residues modelled with at most 2 atoms.

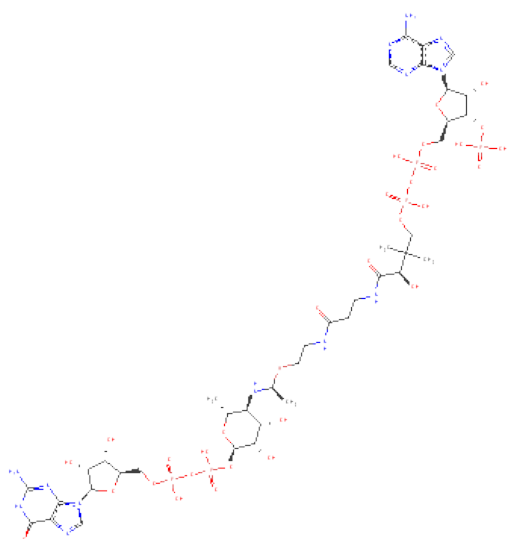
- Molecule 1 is a protein called Perosamine N-acetyltransferase.

Mol	Chain	Residues	Atoms					ZeroOcc	AltConf	Trace
			Total	C	N	O	S			
1	A	207	1495	946	274	270	5	0	11	0

There are 6 discrepancies between the modelled and reference sequences:

Chain	Residue	Modelled	Actual	Comment	Reference
A	-4	GLY	-	EXPRESSION TAG	UNP O85353
A	-3	HIS	-	EXPRESSION TAG	UNP O85353
A	-2	MET	-	EXPRESSION TAG	UNP O85353
A	-1	GLY	-	EXPRESSION TAG	UNP O85353
A	0	ALA	-	EXPRESSION TAG	UNP O85353
A	1	ALA	-	EXPRESSION TAG	UNP O85353

- Molecule 2 is GDP-N-ACETYLPEROSAMINE-COENZYMEA (three-letter code: JBT) (formula:  $C_{39}H_{64}N_{13}O_{30}P_5S$ ).



Mol	Chain	Residues	Atoms						ZeroOcc	AltConf
2	A	1	Total	C	N	O	P	S	0	0
			88	39	13	30	5	1		

- Molecule 3 is CHLORIDE ION (three-letter code: CL) (formula: Cl).

Mol	Chain	Residues	Atoms		ZeroOcc	AltConf
3	A	3	Total	Cl	0	3
			3	3		

- Molecule 4 is water.

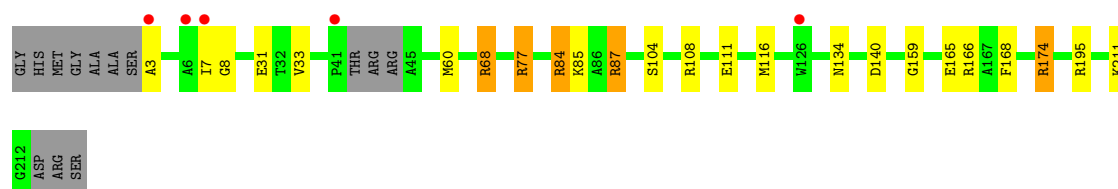
Mol	Chain	Residues	Atoms		ZeroOcc	AltConf
4	A	342	Total	O	0	1
			343	343		

### 3 Residue-property plots

These plots are drawn for all protein, RNA and DNA chains in the entry. The first graphic for a chain summarises the proportions of errors displayed in the second graphic. The second graphic shows the sequence view annotated by issues in geometry and electron density. Residues are color-coded according to the number of geometric quality criteria for which they contain at least one outlier: green = 0, yellow = 1, orange = 2 and red = 3 or more. A red dot above a residue indicates a poor fit to the electron density ( $RSRZ > 2$ ). Stretches of 2 or more consecutive residues without any outlier are shown as a green connector. Residues present in the sample, but not in the model, are shown in grey.

- Molecule 1: Perosamine N-acetyltransferase

Chain A: 



G212  
ASP  
ARG  
SER

## 4 Data and refinement statistics

Property	Value	Source
Space group	I 2 3	Depositor
Cell constants a, b, c, $\alpha$ , $\beta$ , $\gamma$	114.82Å 114.82Å 114.82Å 90.00° 90.00° 90.00°	Depositor
Resolution (Å)	50.00 – 0.90 46.87 – 0.90	Depositor EDS
% Data completeness (in resolution range)	98.6 (50.00-0.90) 98.6 (46.87-0.90)	Depositor EDS
$R_{merge}$	0.07	Depositor
$R_{sym}$	0.07	Depositor
$\langle I/\sigma(I) \rangle$ <sup>1</sup>	2.89 (at 0.90Å)	Xtriage
Refinement program	SHELXL-97	Depositor
R, $R_{free}$	0.138 , 0.155 0.148 , 0.161	Depositor DCC
$R_{free}$ test set	9082 reflections (5.27%)	DCC
Wilson B-factor (Å <sup>2</sup> )	9.2	Xtriage
Anisotropy	0.000	Xtriage
Bulk solvent $k_{sol}$ (e/Å <sup>3</sup> ), $B_{sol}$ (Å <sup>2</sup> )	0.35 , 68.3	EDS
Estimated twinning fraction	0.019 for -l,-k,-h	Xtriage
L-test for twinning	$\langle  L  \rangle = 0.49$ , $\langle L^2 \rangle = 0.31$	Xtriage
Outliers	2 of 181485 reflections (0.001%)	Xtriage
$F_o, F_c$ correlation	0.98	EDS
Total number of atoms	1929	wwPDB-VP
Average B, all atoms (Å <sup>2</sup> )	15.0	wwPDB-VP

Xtriage's analysis on translational NCS is as follows: *The largest off-origin peak in the Patterson function is 4.00% of the height of the origin peak. No significant pseudotranslation is detected.*

<sup>1</sup>Intensities estimated from amplitudes.

## 5 Model quality ⓘ

### 5.1 Standard geometry ⓘ

Bond lengths and bond angles in the following residue types are not validated in this section: JBT, CL

The Z score for a bond length (or angle) is the number of standard deviations the observed value is removed from the expected value. A bond length (or angle) with  $|Z| > 5$  is considered an outlier worth inspection. RMSZ is the root-mean-square of all Z scores of the bond lengths (or angles).

Mol	Chain	Bond lengths		Bond angles	
		RMSZ	$\# Z  > 5$	RMSZ	$\# Z  > 5$
1	A	0.89	1/1554 (0.1%)	1.51	34/2108 (1.6%)

All (1) bond length outliers are listed below:

Mol	Chain	Res	Type	Atoms	Z	Observed(Å)	Ideal(Å)
1	A	159	GLY	N-CA	5.95	1.54	1.46

All (34) bond angle outliers are listed below:

Mol	Chain	Res	Type	Atoms	Z	Observed(°)	Ideal(°)
1	A	87	ARG	NE-CZ-NH1	15.15	127.88	120.30
1	A	108	ARG	CD-NE-CZ	14.70	144.19	123.60
1	A	108	ARG	NE-CZ-NH1	13.71	127.16	120.30
1	A	87	ARG	NE-CZ-NH2	-12.63	113.98	120.30
1	A	77[A]	ARG	CD-NE-CZ	12.27	140.78	123.60
1	A	77[B]	ARG	CD-NE-CZ	12.27	140.78	123.60
1	A	174[A]	ARG	NE-CZ-NH2	10.49	125.54	120.30
1	A	174[B]	ARG	NE-CZ-NH2	10.49	125.54	120.30
1	A	68	ARG	NE-CZ-NH1	8.57	124.59	120.30
1	A	174[A]	ARG	NH1-CZ-NH2	-8.42	110.14	119.40
1	A	174[B]	ARG	NH1-CZ-NH2	-8.42	110.14	119.40
1	A	195	ARG	CG-CD-NE	-8.03	94.93	111.80
1	A	174[A]	ARG	NE-CZ-NH1	7.95	124.28	120.30
1	A	174[B]	ARG	NE-CZ-NH1	7.95	124.28	120.30
1	A	84	ARG	NE-CZ-NH2	7.88	124.24	120.30
1	A	195	ARG	NE-CZ-NH1	7.67	124.13	120.30
1	A	8	GLY	CA-C-O	7.62	134.31	120.60
1	A	8	GLY	N-CA-C	7.54	131.95	113.10
1	A	166	ARG	NE-CZ-NH1	-7.53	116.53	120.30
1	A	108	ARG	NH1-CZ-NH2	-7.36	111.30	119.40

*Continued on next page...*

*Continued from previous page...*

Mol	Chain	Res	Type	Atoms	Z	Observed(°)	Ideal(°)
1	A	60	MET	CB-CG-SD	6.68	132.43	112.40
1	A	8	GLY	O-C-N	-6.51	112.14	123.20
1	A	7	ILE	O-C-N	-6.43	112.27	123.20
1	A	68	ARG	NH1-CZ-NH2	-6.08	112.71	119.40
1	A	3	ALA	CA-C-N	5.92	130.22	117.20
1	A	77[A]	ARG	NE-CZ-NH2	-5.92	117.34	120.30
1	A	77[B]	ARG	NE-CZ-NH2	-5.92	117.34	120.30
1	A	3	ALA	O-C-N	-5.86	113.33	122.70
1	A	168	PHE	CB-CG-CD1	5.61	124.72	120.80
1	A	87	ARG	CD-NE-CZ	5.42	131.19	123.60
1	A	195	ARG	CD-NE-CZ	5.12	130.76	123.60
1	A	7	ILE	CA-C-N	5.01	126.23	116.20
1	A	165	GLU	CG-CD-OE1	5.01	128.33	118.30
1	A	60	MET	CG-SD-CE	5.01	108.22	100.20

There are no chirality outliers.

There are no planarity outliers.

## 5.2 Close contacts ⓘ

In the following table, the Non-H and H(model) columns list the number of non-hydrogen atoms and hydrogen atoms in the chain respectively. The H(added) column lists the number of hydrogens added by MolProbity. The Clashes column lists the number of clashes within the asymmetric unit, and the number in parentheses is this value normalized per 1000 atoms of the molecule in the chain. The Symm-Clashes column gives symmetry related clashes, in the same way as for the Clashes column.

Mol	Chain	Non-H	H(model)	H(added)	Clashes	Symm-Clashes
1	A	1495	0	0	12	0
2	A	88	0	0	0	0
3	A	3	0	0	0	0
4	A	343	0	0	10	1
All	All	1929	0	0	12	1

Clashscore is defined as the number of clashes calculated for the entry per 1000 atoms (including hydrogens) of the entry. The overall clashscore for this entry is 8.

All (12) close contacts within the same asymmetric unit are listed below.

Atom-1	Atom-2	Distance(Å)	Clash(Å)
1:A:174[A]:ARG:NH2	4:A:1340:HOH:O	2.39	0.55
1:A:77[B]:ARG:NH2	4:A:1392:HOH:O	2.47	0.47

*Continued on next page...*



*Continued from previous page...*

Atom-1	Atom-2	Distance(Å)	Clash(Å)
1:A:84:ARG:NE	4:A:1192:HOH:O	2.48	0.46
1:A:211:LYS:NZ	4:A:1232:HOH:O	2.48	0.46
1:A:77[A]:ARG:NH2	4:A:1328:HOH:O	2.48	0.45
1:A:85:LYS:NZ	4:A:1265:HOH:O	2.49	0.45
1:A:85:LYS:NZ	4:A:1214:HOH:O	2.49	0.44
1:A:84:ARG:NH1	4:A:1192:HOH:O	2.50	0.44
1:A:77[B]:ARG:NH1	4:A:1165:HOH:O	2.51	0.43
1:A:87:ARG:NH2	1:A:111:GLU:OE1	2.51	0.43
1:A:33:VAL:O	4:A:1311:HOH:O	2.21	0.42
1:A:31:GLU:OE2	1:A:68:ARG:NH2	2.54	0.40

All (1) symmetry-related close contacts are listed below. The label for Atom-2 includes the symmetry operator and encoded unit-cell translations to be applied.

Atom-1	Atom-2	Distance(Å)	Clash(Å)
4:A:1337:HOH:O	4:A:1399:HOH:O[9_555]	2.19	0.01

## 5.3 Torsion angles

### 5.3.1 Protein backbone ⓘ

In the following table, the Percentiles column shows the percent Ramachandran outliers of the chain as a percentile score with respect to all X-ray entries followed by that with respect to entries of similar resolution. The Analysed column shows the number of residues for which the backbone conformation was analysed, and the total number of residues.

Mol	Chain	Analysed	Favoured	Allowed	Outliers	Percentiles	
1	A	215/220 (98%)	211 (98%)	4 (2%)	0	100	100

There are no Ramachandran outliers to report.

### 5.3.2 Protein sidechains ⓘ

In the following table, the Percentiles column shows the percent sidechain outliers of the chain as a percentile score with respect to all X-ray entries followed by that with respect to entries of similar resolution. The Analysed column shows the number of residues for which the sidechain conformation was analysed, and the total number of residues.

Mol	Chain	Analysed	Rotameric	Outliers	Percentiles	
1	A	157/154 (102%)	153 (98%)	4 (2%)	60	17

All (4) residues with a non-rotameric sidechain are listed below:

Mol	Chain	Res	Type
1	A	104	SER
1	A	116	MET
1	A	134	ASN
1	A	140	ASP

Some sidechains can be flipped to improve hydrogen bonding and reduce clashes. There are no such sidechains identified.

### 5.3.3 RNA ⓘ

There are no RNA chains in this entry.

## 5.4 Non-standard residues in protein, DNA, RNA chains ⓘ

There are no non-standard protein/DNA/RNA residues in this entry.

## 5.5 Carbohydrates ⓘ

There are no carbohydrates in this entry.

## 5.6 Ligand geometry ⓘ

Of 4 ligands modelled in this entry, 3 are monoatomic - leaving 1 for Mogul analysis.

In the following table, the Counts columns list the number of bonds (or angles) for which Mogul statistics could be retrieved, the number of bonds (or angles) that are observed in the model and the number of bonds (or angles) that are defined in the chemical component dictionary. The Link column lists molecule types, if any, to which the group is linked. The Z score for a bond length (or angle) is the number of standard deviations the observed value is removed from the expected value. A bond length (or angle) with  $|Z| > 2$  is considered an outlier worth inspection. RMSZ is the root-mean-square of all Z scores of the bond lengths (or angles).

Mol	Type	Chain	Res	Link	Bond lengths			Bond angles		
					Counts	RMSZ	$\# Z  > 2$	Counts	RMSZ	$\# Z  > 2$
2	JBT	A	1001	-	94,94,94	1.62	12 (12%)	141,144,144	1.33	21 (14%)

In the following table, the Chirals column lists the number of chiral outliers, the number of chiral centers analysed, the number of these observed in the model and the number defined in the chemical component dictionary. Similar counts are reported in the Torsion and Rings columns. '-' means

no outliers of that kind were identified.

Mol	Type	Chain	Res	Link	Chirals	Torsions	Rings
2	JBT	A	1001	-	-	0/75/128/128	0/3/7/7

All (12) bond length outliers are listed below:

Mol	Chain	Res	Type	Atoms	Z	Observed(Å)	Ideal(Å)
2	A	1001	JBT	C4A-N3A	-5.21	1.27	1.35
2	A	1001	JBT	C2B-C1B	-5.02	1.46	1.53
2	A	1001	JBT	CCP-CBP	-4.15	1.46	1.52
2	A	1001	JBT	P2A-O3A	3.73	1.66	1.59
2	A	1001	JBT	C01-S1P	3.69	1.88	1.82
2	A	1001	JBT	O4B-C1B	3.37	1.46	1.41
2	A	1001	JBT	P1A-O3A	-3.18	1.54	1.59
2	A	1001	JBT	C8A-N9A	-2.95	1.32	1.36
2	A	1001	JBT	C4A-N9A	2.94	1.42	1.37
2	A	1001	JBT	C6-C5	-2.82	1.36	1.41
2	A	1001	JBT	C7P-C6P	-2.80	1.42	1.51
2	A	1001	JBT	C4-N9	-2.03	1.34	1.37

All (21) bond angle outliers are listed below:

Mol	Chain	Res	Type	Atoms	Z	Observed(°)	Ideal(°)
2	A	1001	JBT	N3A-C2A-N1A	-4.70	124.78	128.71
2	A	1001	JBT	CEP-CBP-CCP	4.11	114.69	108.76
2	A	1001	JBT	O4B-C1B-N9A	-3.94	104.77	108.44
2	A	1001	JBT	C3B-C2B-C1B	3.83	109.06	99.98
2	A	1001	JBT	O5A-P2A-O4A	2.90	128.44	112.21
2	A	1001	JBT	O4B-C1B-C2B	-2.87	102.38	106.77
2	A	1001	JBT	CBP-CAP-C9P	2.54	115.19	112.73
2	A	1001	JBT	O2'-C2'-C3'	2.53	120.07	111.83
2	A	1001	JBT	O6A-CCP-CBP	2.50	114.76	110.57
2	A	1001	JBT	C4-C5-N7	-2.47	107.41	109.52
2	A	1001	JBT	C7P-C6P-C5P	2.46	116.44	112.25
2	A	1001	JBT	O3B-C3B-C2B	-2.43	102.01	111.54
2	A	1001	JBT	CDP-CBP-CCP	-2.41	105.28	108.76
2	A	1001	JBT	O8A-P3B-O7A	2.38	116.87	107.61
2	A	1001	JBT	O4'-C1'-C2'	-2.24	103.33	106.77
2	A	1001	JBT	N3A-C4A-N9A	2.21	129.42	125.43
2	A	1001	JBT	C5A-C4A-N9A	-2.20	103.99	107.16
2	A	1001	JBT	C02-C01-S1P	-2.18	104.46	110.41
2	A	1001	JBT	N2-C2-N1	-2.13	115.51	117.86
2	A	1001	JBT	C4B-O4B-C1B	2.04	111.96	109.75

*Continued on next page...*

*Continued from previous page...*

Mol	Chain	Res	Type	Atoms	Z	Observed( $^{\circ}$ )	Ideal( $^{\circ}$ )
2	A	1001	JBT	O7A-P3B-O3B	-2.01	101.31	107.09

There are no chirality outliers.

There are no torsion outliers.

There are no ring outliers.

## 5.7 Other polymers

There are no such residues in this entry.

## 5.8 Polymer linkage issues

There are no chain breaks in this entry.

## 6 Fit of model and data ⓘ

### 6.1 Protein, DNA and RNA chains ⓘ

In the following table, the column labelled ‘#RSRZ> 2’ contains the number (and percentage) of RSRZ outliers, followed by percent RSRZ outliers for the chain as percentile scores relative to all X-ray entries and entries of similar resolution. The OWAB column contains the minimum, median, 95<sup>th</sup> percentile and maximum values of the occupancy-weighted average B-factor per residue. The column labelled ‘Q< 0.9’ lists the number of (and percentage) of residues with an average occupancy less than 0.9.

Mol	Chain	Analysed	<RSRZ>	#RSRZ>2	OWAB(Å <sup>2</sup> )	Q<0.9
1	A	207/220 (94%)	-0.48	5 (2%) 56 50	6, 10, 24, 53	0

All (5) RSRZ outliers are listed below:

Mol	Chain	Res	Type	RSRZ
1	A	3	ALA	3.9
1	A	7	ILE	3.3
1	A	41	PRO	2.8
1	A	6	ALA	2.8
1	A	126	TRP	2.4

### 6.2 Non-standard residues in protein, DNA, RNA chains ⓘ

There are no non-standard protein/DNA/RNA residues in this entry.

### 6.3 Carbohydrates ⓘ

There are no carbohydrates in this entry.

### 6.4 Ligands ⓘ

In the following table, the Atoms column lists the number of modelled atoms in the group and the number defined in the chemical component dictionary. LLDF column lists the quality of electron density of the group with respect to its neighbouring residues in protein, DNA or RNA chains. The B-factors column lists the minimum, median, 95<sup>th</sup> percentile and maximum values of B factors of atoms in the group. The column labelled ‘Q< 0.9’ lists the number of atoms with occupancy less than 0.9.

Mol	Type	Chain	Res	Atoms	RSR	LLDF	B-factors(Å <sup>2</sup> )	Q<0.9
3	CL	A	1002[C]	1/1	0.10	3.67	15,15,15,15	0

*Continued on next page...*

*Continued from previous page...*

Mol	Type	Chain	Res	Atoms	RSR	LLDF	B-factors( $\text{\AA}^2$ )	Q<0.9
3	CL	A	1004[C]	1/1	0.10	1.64	19,19,19,19	0
2	JBT	A	1001	88/88	0.05	0.07	7,12,27,51	0
3	CL	A	1003[C]	1/1	0.04	-1.11	18,18,18,18	0

## 6.5 Other polymers ⓘ

There are no such residues in this entry.