



# Full wwPDB X-ray Structure Validation Report

Feb 28, 2014 – 05:53 PM GMT

PDB ID : 3ENK  
Title : 1.9A crystal structure of udp-glucose 4-epimerase from burkholderia pseudo-mallei  
Authors : Seattle Structural Genomics Center for Infectious Disease (SSGCID)  
Deposited on : 2008-09-25  
Resolution : 1.90 Å(reported)

This is a full wwPDB validation report for a publicly released PDB entry.  
We welcome your comments at [validation@mail.wwpdb.org](mailto:validation@mail.wwpdb.org)  
A user guide is available at <http://wwpdb.org/ValidationPDFNotes.html>

---

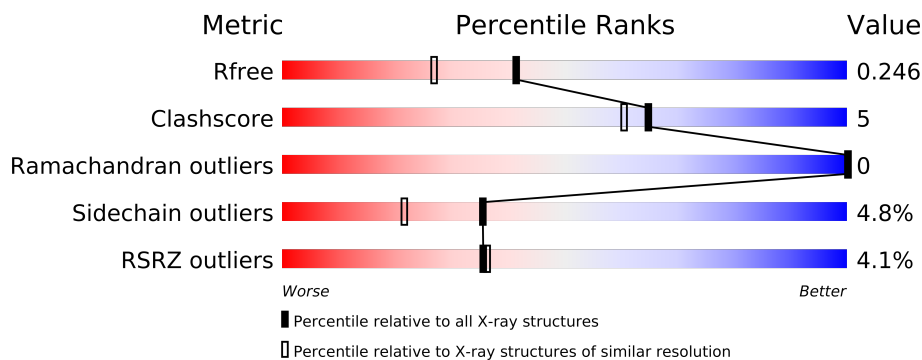
The following versions of software and data (see [references](#)) were used in the production of this report:

MolProbity : 4.02b-467  
Mogul : 1.15 2013  
Xtriage (Phenix) : dev-1323  
EDS : stable22639  
Percentile statistics : 21963  
Refmac : 5.8.0049  
CCP4 : 6.3.0 (Settle)  
Ideal geometry (proteins) : Engh & Huber (2001)  
Ideal geometry (DNA, RNA) : Parkinson et. al. (1996)  
Validation Pipeline (wwPDB-VP) : stable22683

# 1 Overall quality at a glance

The reported resolution of this entry is 1.90 Å.

Percentile scores (ranging between 0-100) for global validation metrics of the entry are shown in the following graphic. The table shows the number of entries on which the scores are based.



Metric	Whole archive (#Entries)	Similar resolution (#Entries, resolution range(Å))
$R_{free}$	66092	3684 (1.90-1.90)
Clashscore	79885	4465 (1.90-1.90)
Ramachandran outliers	78287	4413 (1.90-1.90)
Sidechain outliers	78261	4414 (1.90-1.90)
RSRZ outliers	66119	3686 (1.90-1.90)

The table below summarises the geometric issues observed across the polymeric chains and their fit to the electron density. The red, orange, yellow and green segments on the lower bar indicate the fraction of residues that contain outliers for  $\geq 3$ , 2, 1 and 0 types of geometric quality criteria. The upper red bar (where present) indicates the fraction of residues that have poor fit to the electron density.

Mol	Chain	Length	Quality of chain
1	A	341	
1	B	341	

## 2 Entry composition i

There are 4 unique types of molecules in this entry. The entry contains 5774 atoms, of which 0 are hydrogen and 0 are deuterium.

In the tables below, the ZeroOcc column contains the number of atoms modelled with zero occupancy, the AltConf column contains the number of residues with at least one atom in alternate conformation and the Trace column contains the number of residues modelled with at most 2 atoms.

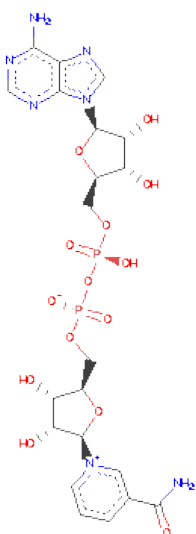
- Molecule 1 is a protein called UDP-glucose 4-epimerase.

Mol	Chain	Residues	Atoms					ZeroOcc	AltConf	Trace
1	A	340	Total	C	N	O	S	0	2	0
			2629	1657	472	492	8			
1	B	339	Total	C	N	O	S	0	2	0
			2618	1649	470	491	8			

There are 2 discrepancies between the modelled and reference sequences:

Chain	Residue	Modelled	Actual	Comment	Reference
A	0	SER	-	expression tag	UNP Q3JPI3
B	0	SER	-	expression tag	UNP Q3JPI3

- Molecule 2 is NICOTINAMIDE-ADENINE-DINUCLEOTIDE (three-letter code: NAD) (formula:  $C_{21}H_{27}N_7O_{14}P_2$ ).



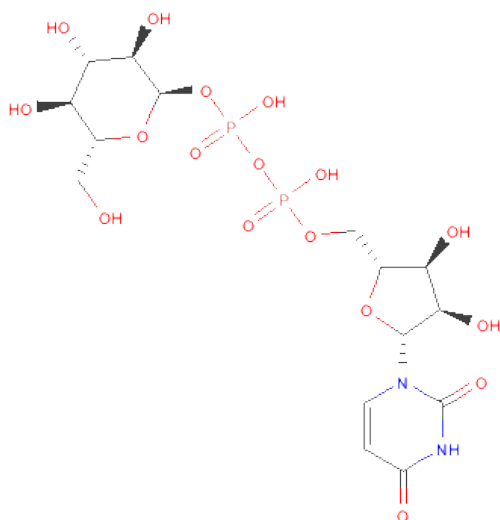
Mol	Chain	Residues	Atoms					ZeroOcc	AltConf
2	A	1	Total	C	N	O	P	0	0
			44	21	7	14	2		

*Continued on next page...*

Continued from previous page...

Mol	Chain	Residues	Atoms					ZeroOcc	AltConf
2	B	1	Total	C	N	O	P	0	0
			44	21	7	14	2		

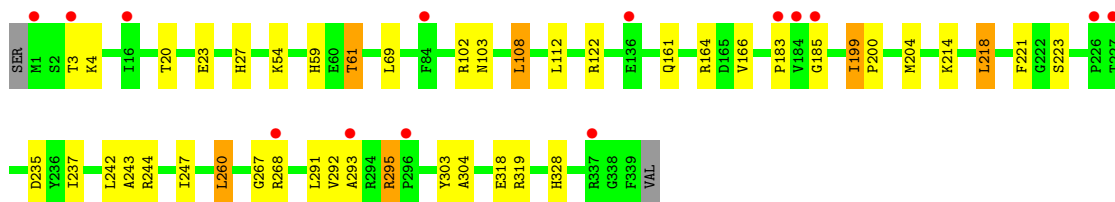
- Molecule 3 is URIDINE-5'-DIPHOSPHATE-GLUCOSE (three-letter code: UPG) (formula:  $C_{15}H_{24}N_2O_{17}P_2$ ).



Mol	Chain	Residues	Atoms					ZeroOcc	AltConf
3	A	1	Total	C	N	O	P	0	0
			36	15	2	17	2		
3	B	1	Total	C	N	O	P	0	0
			36	15	2	17	2		

- Molecule 4 is water.

Mol	Chain	Residues	Atoms		ZeroOcc	AltConf
4	A	193	Total	O	0	0
			193	193		
4	B	174	Total	O	0	0
			174	174		



## 4 Data and refinement statistics

Property	Value	Source
Space group	P 1 21 1	Depositor
Cell constants a, b, c, $\alpha$ , $\beta$ , $\gamma$	56.86Å 83.47Å 82.58Å 90.00° 96.17° 90.00°	Depositor
Resolution (Å)	30.00 – 1.90 28.27 – 1.90	Depositor EDS
% Data completeness (in resolution range)	98.7 (30.00-1.90) 98.7 (28.27-1.90)	Depositor EDS
$R_{merge}$	0.05	Depositor
$R_{sym}$	(Not available)	Depositor
$\langle I/\sigma(I) \rangle$ <sup>1</sup>	6.14 (at 1.91Å)	Xtriage
Refinement program	REFMAC 5.2.0019	Depositor
R, $R_{free}$	0.194 , 0.245 0.195 , 0.246	Depositor DCC
$R_{free}$ test set	2988 reflections (5.27%)	DCC
Wilson B-factor (Å <sup>2</sup> )	32.4	Xtriage
Anisotropy	0.059	Xtriage
Bulk solvent $k_{sol}$ (e/Å <sup>3</sup> ), $B_{sol}$ (Å <sup>2</sup> )	0.41 , 50.8	EDS
Estimated twinning fraction	No twinning to report.	Xtriage
L-test for twinning	$\langle  L  \rangle = 0.49$ , $\langle L^2 \rangle = 0.33$	Xtriage
Outliers	0 of 59681 reflections	Xtriage
$F_o, F_c$ correlation	0.96	EDS
Total number of atoms	5774	wwPDB-VP
Average B, all atoms (Å <sup>2</sup> )	36.0	wwPDB-VP

Xtriage's analysis on translational NCS is as follows: *The largest off-origin peak in the Patterson function is 4.75% of the height of the origin peak. No significant pseudotranslation is detected.*

<sup>1</sup>Intensities estimated from amplitudes.

## 5 Model quality ⓘ

### 5.1 Standard geometry ⓘ

Bond lengths and bond angles in the following residue types are not validated in this section: UPG, NAD

The Z score for a bond length (or angle) is the number of standard deviations the observed value is removed from the expected value. A bond length (or angle) with  $|Z| > 5$  is considered an outlier worth inspection. RMSZ is the root-mean-square of all Z scores of the bond lengths (or angles).

Mol	Chain	Bond lengths		Bond angles	
		RMSZ	# Z  >5	RMSZ	# Z  >5
1	A	0.64	1/2691 (0.0%)	0.70	0/3660
1	B	0.61	0/2680	0.69	3/3644 (0.1%)
All	All	0.63	1/5371 (0.0%)	0.69	3/7304 (0.0%)

All (1) bond length outliers are listed below:

Mol	Chain	Res	Type	Atoms	Z	Observed(Å)	Ideal(Å)
1	A	302	CYS	CB-SG	-5.48	1.72	1.81

All (3) bond angle outliers are listed below:

Mol	Chain	Res	Type	Atoms	Z	Observed(°)	Ideal(°)
1	B	260	LEU	CA-CB-CG	6.69	130.69	115.30
1	B	204	MET	CA-CB-CG	-5.20	104.46	113.30
1	B	218	LEU	CA-CB-CG	5.05	126.92	115.30

There are no chirality outliers.

There are no planarity outliers.

### 5.2 Close contacts ⓘ

In the following table, the Non-H and H(model) columns list the number of non-hydrogen atoms and hydrogen atoms in the chain respectively. The H(added) column lists the number of hydrogens added by MolProbity. The Clashes column lists the number of clashes within the asymmetric unit, and the number in parentheses is this value normalized per 1000 atoms of the molecule in the chain. The Symm-Clashes column gives symmetry related clashes, in the same way as for the Clashes column.

Mol	Chain	Non-H	H(model)	H(added)	Clashes	Symm-Clashes
1	A	2629	0	2618	28	0
1	B	2618	0	2604	26	0
2	A	44	0	26	2	0
2	B	44	0	26	1	0
3	A	36	0	22	2	0
3	B	36	0	22	2	0
4	A	193	0	0	7	0
4	B	174	0	0	3	0
All	All	5774	0	5318	57	0

Clashscore is defined as the number of clashes calculated for the entry per 1000 atoms (including hydrogens) of the entry. The overall clashscore for this entry is 5.

All (57) close contacts within the same asymmetric unit are listed below.

Atom-1	Atom-2	Distance(Å)	Clash(Å)
1:A:122:ARG:HH11	1:A:122:ARG:HG2	1.36	0.91
1:A:122:ARG:HH11	1:A:122:ARG:CG	1.93	0.80
1:B:185:GLY:H	1:B:328:HIS:HD2	1.29	0.80
1:A:185:GLY:H	1:A:328:HIS:HD2	1.28	0.77
1:B:244:ARG:HH21	1:B:319:ARG:HH12	1.33	0.76
1:B:292:VAL:HG22	1:B:293:ALA:H	1.51	0.75
3:A:342:UPG:O3'	4:A:495:HOH:O	2.05	0.75
1:A:280:GLU:OE1	4:A:482:HOH:O	2.07	0.72
1:A:194:GLU:OE1	4:A:353:HOH:O	2.09	0.70
1:A:103:ASN:HD21	2:A:341:NAD:H61A	1.37	0.70
1:B:185:GLY:H	1:B:328:HIS:CD2	2.15	0.65
1:B:23:GLU:O	1:B:27:HIS:HD2	1.79	0.64
1:B:244:ARG:HH22	1:B:318:GLU:CD	2.02	0.63
1:A:122:ARG:HH21	1:A:254:GLU:HA	1.65	0.62
1:B:112:LEU:HD13	1:B:166:VAL:HG21	1.82	0.60
1:B:161:GLN:NE2	1:B:164:ARG:HH11	1.99	0.60
1:B:103:ASN:HD21	2:B:341:NAD:H61A	1.50	0.58
1:B:244:ARG:NH2	1:B:319:ARG:HH12	2.00	0.58
1:B:4:LYS:HE3	4:B:605:HOH:O	2.05	0.56
1:A:185:GLY:H	1:A:328:HIS:CD2	2.17	0.56
1:B:244:ARG:HH21	1:B:319:ARG:NH1	2.01	0.55
1:A:122:ARG:NH1	1:A:122:ARG:HG2	2.14	0.54
3:B:342:UPG:H6'2	4:B:602:HOH:O	2.07	0.54
1:A:103:ASN:ND2	2:A:341:NAD:H61A	2.06	0.54
1:B:183:PRO:HB3	1:B:242:LEU:HD22	1.89	0.54
1:A:177:THR:HG23	4:A:361:HOH:O	2.08	0.52
1:A:128:SER:HB3	1:A:130:THR:HG22	1.92	0.52
1:A:238:HIS:CD2	1:A:319:ARG:HD3	2.46	0.51

*Continued on next page...*



*Continued from previous page...*

Atom-1	Atom-2	Distance(Å)	Clash(Å)
1:A:161:GLN:NE2	1:A:164:ARG:HH11	2.09	0.51
1:B:292:VAL:HG22	1:B:293:ALA:N	2.23	0.50
1:A:307:ALA:O	1:A:311:GLU:HG2	2.11	0.50
1:A:122:ARG:NH1	1:A:122:ARG:CG	2.63	0.50
1:B:23:GLU:O	1:B:27:HIS:CD2	2.64	0.49
1:B:235:ASP:HB2	1:B:303:TYR:HA	1.95	0.49
1:B:108:LEU:HD22	1:B:112:LEU:HG	1.94	0.48
1:B:183:PRO:HA	1:B:237:ILE:O	2.14	0.48
1:A:267:GLY:HA2	1:A:304:ALA:O	2.14	0.48
1:B:59:HIS:HB3	1:B:61:THR:CG2	2.46	0.46
1:B:223:SER:HB3	1:B:291:LEU:HD22	1.98	0.45
1:B:247:ILE:HD12	1:B:247:ILE:N	2.32	0.45
3:B:342:UPG:O3'	4:B:585:HOH:O	2.17	0.45
1:A:137:ARG:HG2	1:A:138:SER:N	2.33	0.44
1:A:42:ARG:HG3	4:A:407:HOH:O	2.18	0.44
1:B:199:ILE:HA	1:B:200:PRO:HD3	1.84	0.43
1:A:42:ARG:O	1:A:42:ARG:HD3	2.18	0.43
1:B:267:GLY:HA2	1:B:304:ALA:O	2.19	0.43
1:A:183:PRO:HA	1:A:237:ILE:O	2.18	0.43
1:A:252:ALA:O	1:A:256:ARG:HB2	2.20	0.42
1:A:233:VAL:HB	1:A:301:GLU:HG3	2.02	0.42
1:B:221:PHE:CD2	1:B:295:ARG:HG3	2.55	0.42
1:B:20:THR:HA	1:B:243:ALA:HB1	2.02	0.42
1:A:328:HIS:HE1	4:A:355:HOH:O	2.01	0.42
1:B:214:LYS:HE2	1:B:214:LYS:HB3	1.87	0.42
1:A:102:ARG:HG2	4:A:489:HOH:O	2.20	0.41
1:A:122:ARG:NH2	1:A:254:GLU:HA	2.32	0.41
1:A:235:ASP:HB2	1:A:303:TYR:CB	2.51	0.40
1:A:90:VAL:HG21	3:A:342:UPG:H6'2	2.02	0.40

There are no symmetry-related clashes.

## 5.3 Torsion angles

### 5.3.1 Protein backbone ⓘ

In the following table, the Percentiles column shows the percent Ramachandran outliers of the chain as a percentile score with respect to all X-ray entries followed by that with respect to entries of similar resolution. The Analysed column shows the number of residues for which the backbone conformation was analysed, and the total number of residues.

Mol	Chain	Analysed	Favoured	Allowed	Outliers	Percentiles	
1	A	340/341 (100%)	336 (99%)	4 (1%)	0	100	100
1	B	339/341 (99%)	333 (98%)	6 (2%)	0	100	100
All	All	679/682 (100%)	669 (98%)	10 (2%)	0	100	100

There are no Ramachandran outliers to report.

### 5.3.2 Protein sidechains ⓘ

In the following table, the Percentiles column shows the percent sidechain outliers of the chain as a percentile score with respect to all X-ray entries followed by that with respect to entries of similar resolution. The Analysed column shows the number of residues for which the sidechain conformation was analysed, and the total number of residues.

Mol	Chain	Analysed	Rotameric	Outliers	Percentiles	
1	A	272/271 (100%)	258 (95%)	14 (5%)	33	19
1	B	271/271 (100%)	259 (96%)	12 (4%)	39	25
All	All	543/542 (100%)	517 (95%)	26 (5%)	35	21

All (26) residues with a non-rotameric sidechain are listed below:

Mol	Chain	Res	Type
1	A	42	ARG
1	A	50	LYS
1	A	69	LEU
1	A	102	ARG
1	A	108	LEU
1	A	122	ARG
1	A	136	GLU
1	A	177	THR
1	A	218	LEU
1	A	237	ILE
1	A	247	ILE
1	A	262	VAL
1	A	311	GLU
1	A	340	VAL
1	B	3	THR
1	B	54	LYS
1	B	61	THR
1	B	69	LEU
1	B	102	ARG

*Continued on next page...*

*Continued from previous page...*

Mol	Chain	Res	Type
1	B	108	LEU
1	B	122	ARG
1	B	199	ILE
1	B	218	LEU
1	B	260	LEU
1	B	268	ARG
1	B	295	ARG

Some sidechains can be flipped to improve hydrogen bonding and reduce clashes. All (9) such sidechains are listed below:

Mol	Chain	Res	Type
1	A	103	ASN
1	A	154	GLN
1	A	161	GLN
1	A	328	HIS
1	B	27	HIS
1	B	103	ASN
1	B	154	GLN
1	B	161	GLN
1	B	328	HIS

### 5.3.3 RNA ⓘ

There are no RNA chains in this entry.

## 5.4 Non-standard residues in protein, DNA, RNA chains ⓘ

There are no non-standard protein/DNA/RNA residues in this entry.

## 5.5 Carbohydrates ⓘ

There are no carbohydrates in this entry.

## 5.6 Ligand geometry ⓘ

4 ligands are modelled in this entry.

In the following table, the Counts columns list the number of bonds (or angles) for which Mogul statistics could be retrieved, the number of bonds (or angles) that are observed in the model and

the number of bonds (or angles) that are defined in the chemical component dictionary. The Link column lists molecule types, if any, to which the group is linked. The Z score for a bond length (or angle) is the number of standard deviations the observed value is removed from the expected value. A bond length (or angle) with  $|Z| > 2$  is considered an outlier worth inspection. RMSZ is the root-mean-square of all Z scores of the bond lengths (or angles).

Mol	Type	Chain	Res	Link	Bond lengths			Bond angles		
					Counts	RMSZ	# Z  > 2	Counts	RMSZ	# Z  > 2
2	NAD	A	341	-	48,48,48	1.29	4 (8%)	73,73,73	1.74	9 (12%)
3	UPG	A	342	-	38,38,38	0.93	2 (5%)	54,58,58	1.67	12 (22%)
2	NAD	B	341	-	48,48,48	1.51	4 (8%)	73,73,73	1.56	2 (2%)
3	UPG	B	342	-	38,38,38	1.08	2 (5%)	54,58,58	1.37	6 (11%)

In the following table, the Chirals column lists the number of chiral outliers, the number of chiral centers analysed, the number of these observed in the model and the number defined in the chemical component dictionary. Similar counts are reported in the Torsion and Rings columns. '-' means no outliers of that kind were identified.

Mol	Type	Chain	Res	Link	Chirals	Torsions	Rings
2	NAD	A	341	-	-	0/30/62/62	0/3/5/5
3	UPG	A	342	-	4/4/11/11	0/21/59/59	0/3/3/3
2	NAD	B	341	-	-	0/30/62/62	0/3/5/5
3	UPG	B	342	-	2/2/11/11	0/21/59/59	1/3/3/3

All (12) bond length outliers are listed below:

Mol	Chain	Res	Type	Atoms	Z	Observed(Å)	Ideal(Å)
2	B	341	NAD	O7N-C7N	7.71	1.42	1.24
2	A	341	NAD	O7N-C7N	6.25	1.38	1.24
3	B	342	UPG	C2-N1	4.41	1.43	1.38
2	A	341	NAD	C2A-N3A	2.86	1.37	1.32
2	B	341	NAD	C2A-N3A	2.73	1.37	1.32
2	B	341	NAD	C2A-N1A	2.68	1.39	1.33
2	A	341	NAD	C2A-N1A	2.63	1.39	1.33
3	A	342	UPG	C2-N3	-2.62	1.32	1.37
2	A	341	NAD	C2N-N1N	2.26	1.38	1.35
2	B	341	NAD	C2N-N1N	2.23	1.38	1.35
3	B	342	UPG	C6-C5	2.21	1.39	1.36
3	A	342	UPG	O4C-C1C	2.06	1.44	1.41

All (29) bond angle outliers are listed below:

Mol	Chain	Res	Type	Atoms	Z	Observed(°)	Ideal(°)
2	B	341	NAD	N3A-C2A-N1A	-10.60	119.84	128.71
2	A	341	NAD	N3A-C2A-N1A	-10.24	120.15	128.71
3	A	342	UPG	O3B-C1'-C2'	-5.35	98.57	108.38
3	B	342	UPG	N3-C2-N1	4.51	119.74	115.97
3	A	342	UPG	N3-C2-N1	4.42	119.66	115.97
3	A	342	UPG	O5'-C1'-O3B	-3.77	106.44	111.36
2	A	341	NAD	C8A-N9A-C4A	3.49	109.57	106.90
2	B	341	NAD	N3A-C4A-N9A	3.42	131.61	125.43
2	A	341	NAD	O7N-C7N-C3N	-3.28	115.88	119.58
3	A	342	UPG	O5'-C1'-C2'	3.23	116.93	110.31
3	B	342	UPG	C2-N1-C1C	3.23	120.23	118.21
2	A	341	NAD	C3N-C7N-N7N	3.21	121.42	117.77
2	A	341	NAD	N3A-C4A-N9A	3.20	131.22	125.43
3	B	342	UPG	O3A-PB-O3B	-2.99	95.93	103.48
3	B	342	UPG	O5'-C1'-O3B	-2.85	107.64	111.36
3	A	342	UPG	O5'-C5'-C4'	-2.84	104.50	109.76
3	A	342	UPG	PB-O3A-PA	-2.71	123.74	131.68
3	B	342	UPG	O2'-C2'-C1'	-2.51	104.56	110.04
2	A	341	NAD	N7A-C8A-N9A	-2.46	107.39	114.36
2	A	341	NAD	C4A-C5A-N7A	-2.37	107.49	109.52
3	B	342	UPG	O3B-C1'-C2'	2.37	112.72	108.38
3	A	342	UPG	O3A-PB-O3B	-2.30	97.65	103.48
3	A	342	UPG	O3B-PB-O1B	-2.30	100.39	109.65
3	A	342	UPG	C5-C4-N3	2.23	120.90	116.70
2	A	341	NAD	O2N-PN-O3	2.19	114.70	108.79
3	A	342	UPG	O2'-C2'-C1'	-2.14	105.37	110.04
3	A	342	UPG	C4C-O4C-C1C	2.12	112.05	109.75
2	A	341	NAD	O4B-C1B-C2B	-2.09	103.57	106.77
3	A	342	UPG	C4'-C3'-C2'	2.01	114.53	110.82

All (6) chirality outliers are listed below:

Mol	Chain	Res	Type	Atom
3	A	342	UPG	C4'
3	A	342	UPG	C5'
3	A	342	UPG	C3'
3	A	342	UPG	C1'
3	B	342	UPG	C3'
3	B	342	UPG	C1'

There are no torsion outliers.

All (1) ring outliers are listed below:

Mol	Chain	Res	Type	Atoms
3	B	342	UPG	C1'-C2'-C3'-C4'-C5'-O5'

## 5.7 Other polymers ⓘ

There are no such residues in this entry.

## 5.8 Polymer linkage issues

There are no chain breaks in this entry.

## 6 Fit of model and data ⓘ

### 6.1 Protein, DNA and RNA chains ⓘ

In the following table, the column labelled ‘#RSRZ> 2’ contains the number (and percentage) of RSRZ outliers, followed by percent RSRZ outliers for the chain as percentile scores relative to all X-ray entries and entries of similar resolution. The OWAB column contains the minimum, median, 95<sup>th</sup> percentile and maximum values of the occupancy-weighted average B-factor per residue. The column labelled ‘Q< 0.9’ lists the number of (and percentage) of residues with an average occupancy less than 0.9.

Mol	Chain	Analysed	<RSRZ>	#RSRZ>2	OWAB(Å <sup>2</sup> )	Q<0.9
1	A	340/341 (99%)	0.24	14 (4%) 35 36	25, 36, 46, 54	0
1	B	339/341 (99%)	0.22	14 (4%) 35 36	25, 35, 51, 62	0
All	All	679/682 (99%)	0.23	28 (4%) 35 36	25, 35, 50, 62	0

All (28) RSRZ outliers are listed below:

Mol	Chain	Res	Type	RSRZ
1	A	340	VAL	5.3
1	B	1	MET	3.6
1	A	16	ILE	3.5
1	B	296	PRO	3.4
1	B	337	ARG	3.3
1	A	84	PHE	3.1
1	A	184	VAL	3.0
1	A	82	ILE	2.9
1	B	16	ILE	2.8
1	B	183	PRO	2.7
1	A	180	TYR	2.6
1	A	124	VAL	2.6
1	B	3	THR	2.5
1	B	268	ARG	2.4
1	A	236	TYR	2.3
1	A	125	PHE	2.3
1	A	108	LEU	2.3
1	A	293	ALA	2.2
1	B	293	ALA	2.2
1	B	184	VAL	2.2
1	B	226	PRO	2.2
1	B	136	GLU	2.1
1	A	126	SER	2.1
1	B	84	PHE	2.1

*Continued on next page...*

*Continued from previous page...*

Mol	Chain	Res	Type	RSRZ
1	A	83	HIS	2.1
1	B	227	THR	2.0
1	B	185	GLY	2.0
1	A	311	GLU	2.0

## 6.2 Non-standard residues in protein, DNA, RNA chains [i](#)

There are no non-standard protein/DNA/RNA residues in this entry.

## 6.3 Carbohydrates [i](#)

There are no carbohydrates in this entry.

## 6.4 Ligands [i](#)

In the following table, the Atoms column lists the number of modelled atoms in the group and the number defined in the chemical component dictionary. LLDF column lists the quality of electron density of the group with respect to its neighbouring residues in protein, DNA or RNA chains. The B-factors column lists the minimum, median, 95<sup>th</sup> percentile and maximum values of B factors of atoms in the group. The column labelled 'Q< 0.9' lists the number of atoms with occupancy less than 0.9.

Mol	Type	Chain	Res	Atoms	RSR	LLDF	B-factors(Å <sup>2</sup> )	Q<0.9
2	NAD	B	341	44/44	0.15	0.24	22,26,29,30	0
3	UPG	A	342	36/36	0.14	0.07	31,35,56,59	0
2	NAD	A	341	44/44	0.13	-0.16	23,27,30,32	0
3	UPG	B	342	36/36	0.10	-1.21	33,42,52,57	0

## 6.5 Other polymers [i](#)

There are no such residues in this entry.