



# wwPDB X-ray Structure Validation Summary Report

Feb 28, 2014 – 02:20 PM GMT

PDB ID : 4EOO  
Title : Thr 160 phosphorylated CDK2 Q131E - human cyclin A3 complex with ATP  
Authors : Echalier, A.; Cot, E.; Camasses, A.; Hodimont, E.; Hoh, F.; Sheinerman, F.; Krasinska, L.; Fisher, D.  
Deposited on : 2012-04-14  
Resolution : 2.10 Å(reported)

This is a wwPDB validation summary report for a publicly released PDB entry.

We welcome your comments at [validation@mail.wwpdb.org](mailto:validation@mail.wwpdb.org)

A user guide is available at <http://wwpdb.org/ValidationPDFNotes.html>

---

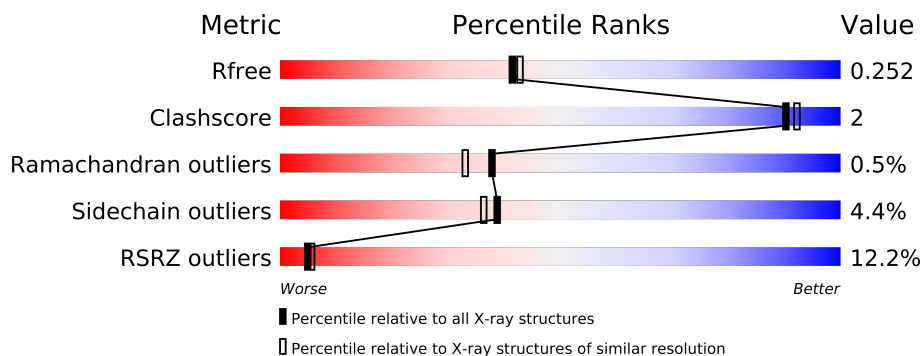
The following versions of software and data (see [references](#)) were used in the production of this report:

MolProbity	:	4.02b-467
Mogul	:	1.15 2013
Xtriage (Phenix)	:	dev-1323
EDS	:	stable22639
Percentile statistics	:	21963
Refmac	:	5.8.0049
CCP4	:	6.3.0 (Settle)
Ideal geometry (proteins)	:	Engh & Huber (2001)
Ideal geometry (DNA, RNA)	:	Parkinson et. al. (1996)
Validation Pipeline (wwPDB-VP)	:	stable22683

# 1 Overall quality at a glance

The reported resolution of this entry is 2.10 Å.

Percentile scores (ranging between 0-100) for global validation metrics of the entry are shown in the following graphic. The table shows the number of entries on which the scores are based.



Metric	Whole archive (#Entries)	Similar resolution (#Entries, resolution range(Å))
$R_{free}$	66092	3012 (2.10-2.10)
Clashscore	79885	3649 (2.10-2.10)
Ramachandran outliers	78287	3610 (2.10-2.10)
Sidechain outliers	78261	3611 (2.10-2.10)
RSRZ outliers	66119	3013 (2.10-2.10)

The table below summarises the geometric issues observed across the polymeric chains and their fit to the electron density. The red, orange, yellow and green segments on the lower bar indicate the fraction of residues that contain outliers for  $\geq 3$ , 2, 1 and 0 types of geometric quality criteria. The upper red bar (where present) indicates the fraction of residues that have poor fit to the electron density.

Mol	Chain	Length	Quality of chain
1	A	299	
1	C	299	
2	B	258	
2	D	258	

The following table lists non-polymeric compounds that are outliers for geometric or electron-density-fit criteria:

Mol	Type	Chain	Res	Geometry	Electron density
5	SGM	B	502	-	X
5	SGM	D	501	-	X

## 2 Entry composition

There are 6 unique types of molecules in this entry. The entry contains 9456 atoms, of which 0 are hydrogen and 0 are deuterium.

In the tables below, the ZeroOcc column contains the number of atoms modelled with zero occupancy, the AltConf column contains the number of residues with at least one atom in alternate conformation and the Trace column contains the number of residues modelled with at most 2 atoms.

- Molecule 1 is a protein called Cyclin-dependent kinase 2.

Mol	Chain	Residues	Atoms						ZeroOcc	AltConf	Trace
1	A	295	Total	C	N	O	P	S	0	3	0
			2398	1555	410	424	1	8			
1	C	298	Total	C	N	O	P	S	0	1	0
			2402	1558	407	428	1	8			

There are 6 discrepancies between the modelled and reference sequences:

Chain	Residue	Modelled	Actual	Comment	Reference
A	-1	GLY	-	EXPRESSION TAG	UNP P24941
A	0	SER	-	EXPRESSION TAG	UNP P24941
A	131	GLU	GLN	ENGINEERED MUTATION	UNP P24941
C	-1	GLY	-	EXPRESSION TAG	UNP P24941
C	0	SER	-	EXPRESSION TAG	UNP P24941
C	131	GLU	GLN	ENGINEERED MUTATION	UNP P24941

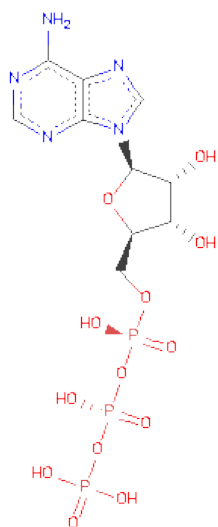
- Molecule 2 is a protein called Cyclin-A2.

Mol	Chain	Residues	Atoms						ZeroOcc	AltConf	Trace
2	B	258	Total	C	N	O	S		0	0	0
			2083	1350	339	383	11				
2	D	254	Total	C	N	O	S		0	1	0
			2063	1335	338	379	11				

- Molecule 3 is MAGNESIUM ION (three-letter code: MG) (formula: Mg).

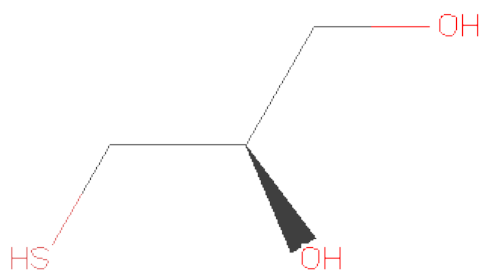
Mol	Chain	Residues	Atoms		ZeroOcc	AltConf
3	B	1	Total	Mg	0	0
			1	1		
3	A	1	Total	Mg	0	0
			1	1		
3	C	1	Total	Mg	0	0
			1	1		

- Molecule 4 is ADENOSINE-5'-TRIPHOSPHATE (three-letter code: ATP) (formula:  $C_{10}H_{16}N_5O_{13}P_3$ ).



Mol	Chain	Residues	Atoms					ZeroOcc	AltConf
4	A	1	Total	C	N	O	P	0	0
			31	10	5	13	3		
4	C	1	Total	C	N	O	P	0	0
			31	10	5	13	3		

- Molecule 5 is MONOTHIOGLYCEROL (three-letter code: SGM) (formula:  $C_3H_8O_2S$ ).



Mol	Chain	Residues	Atoms				ZeroOcc	AltConf
5	B	1	Total	C	O	S	0	0
			6	3	2	1		
5	D	1	Total	C	O	S	0	0
			6	3	2	1		

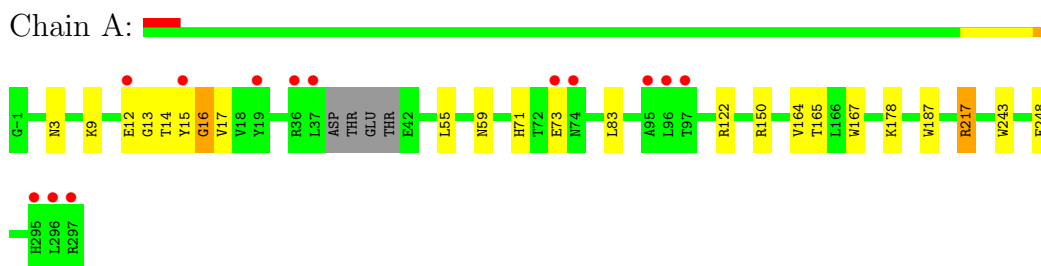
- Molecule 6 is water.

Mol	Chain	Residues	Atoms		ZeroOcc	AltConf
6	A	154	Total	O	0	0
			154	154		
6	B	118	Total	O	0	0
			118	118		
6	C	82	Total	O	0	0
			82	82		
6	D	79	Total	O	0	0
			79	79		

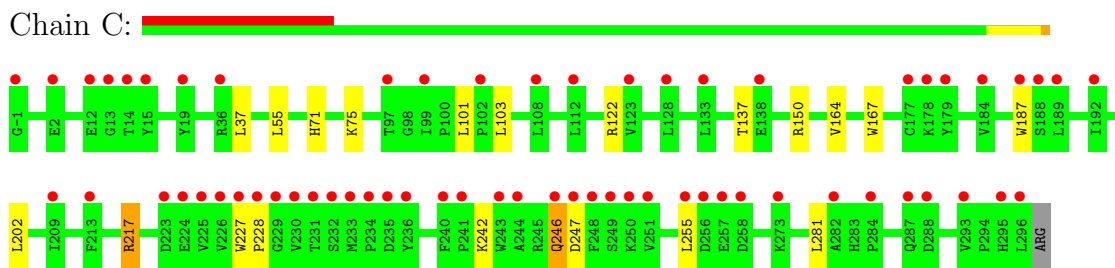
### 3 Residue-property plots

These plots are drawn for all protein, RNA and DNA chains in the entry. The first graphic for a chain summarises the proportions of errors displayed in the second graphic. The second graphic shows the sequence view annotated by issues in geometry and electron density. Residues are color-coded according to the number of geometric quality criteria for which they contain at least one outlier: green = 0, yellow = 1, orange = 2 and red = 3 or more. A red dot above a residue indicates a poor fit to the electron density ( $RSRZ > 2$ ). Stretches of 2 or more consecutive residues without any outlier are shown as a green connector. Residues present in the sample, but not in the model, are shown in grey.

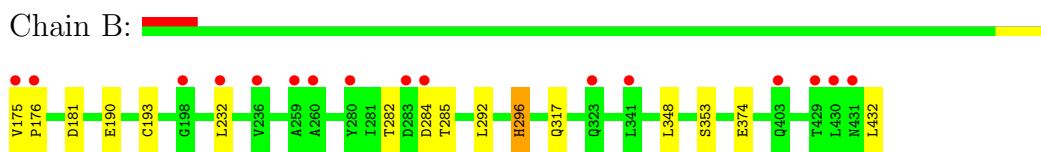
- Molecule 1: Cyclin-dependent kinase 2



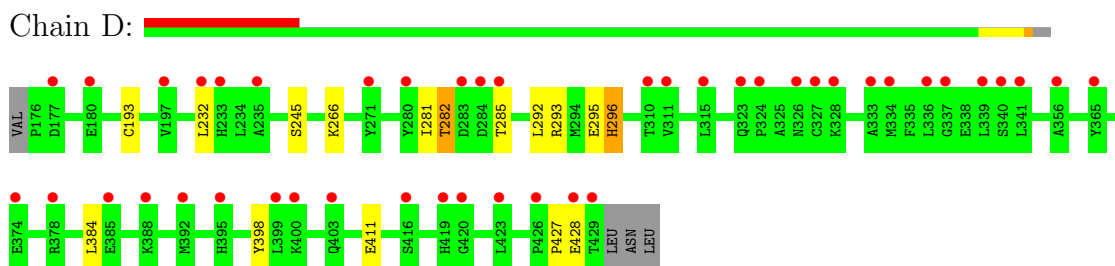
- Molecule 1: Cyclin-dependent kinase 2



- Molecule 2: Cyclin-A2



- Molecule 2: Cyclin-A2



## 4 Data and refinement statistics

Property	Value	Source
Space group	P 21 21 21	Depositor
Cell constants a, b, c, $\alpha$ , $\beta$ , $\gamma$	74.11Å 134.49Å 148.69Å 90.00° 90.00° 90.00°	Depositor
Resolution (Å)	29.79 – 2.10 29.79 – 2.10	Depositor EDS
% Data completeness (in resolution range)	98.5 (29.79-2.10) 98.6 (29.79-2.10)	Depositor EDS
$R_{merge}$	(Not available)	Depositor
$R_{sym}$	(Not available)	Depositor
$\langle I/\sigma(I) \rangle$ <sup>1</sup>	2.07 (at 2.10Å)	Xtriage
Refinement program	REFMAC 5.6.0117	Depositor
R, $R_{free}$	0.214 , 0.253 0.213 , 0.252	Depositor DCC
$R_{free}$ test set	4321 reflections (5.29%)	DCC
Wilson B-factor (Å <sup>2</sup> )	33.5	Xtriage
Anisotropy	0.019	Xtriage
Bulk solvent $k_{sol}$ (e/Å <sup>3</sup> ), $B_{sol}$ (Å <sup>2</sup> )	0.37 , 36.6	EDS
Estimated twinning fraction	No twinning to report.	Xtriage
L-test for twinning	$\langle  L  \rangle = 0.48$ , $\langle L^2 \rangle = 0.31$	Xtriage
Outliers	0 of 86124 reflections	Xtriage
$F_o, F_c$ correlation	0.94	EDS
Total number of atoms	9456	wwPDB-VP
Average B, all atoms (Å <sup>2</sup> )	44.0	wwPDB-VP

Xtriage's analysis on translational NCS is as follows: *The largest off-origin peak in the Patterson function is 3.07% of the height of the origin peak. No significant pseudotranslation is detected.*

<sup>1</sup>Intensities estimated from amplitudes.

## 5 Model quality

### 5.1 Standard geometry

Bond lengths and bond angles in the following residue types are not validated in this section: TPO, MG, SGM, ATP

The Z score for a bond length (or angle) is the number of standard deviations the observed value is removed from the expected value. A bond length (or angle) with  $|Z| > 5$  is considered an outlier worth inspection. RMSZ is the root-mean-square of all Z scores of the bond lengths (or angles).

Mol	Chain	Bond lengths		Bond angles	
		RMSZ	$\# Z  > 5$	RMSZ	$\# Z  > 5$
1	A	0.53	3/2448 (0.1%)	0.61	1/3318 (0.0%)
1	C	0.48	3/2453 (0.1%)	0.57	0/3328
2	B	0.46	0/2133	0.56	0/2897
2	D	0.44	0/2113	0.51	0/2867
All	All	0.48	6/9147 (0.1%)	0.57	1/12410 (0.0%)

The worst 5 of 6 bond length outliers are listed below:

Mol	Chain	Res	Type	Atoms	Z	Observed(Å)	Ideal(Å)
1	A	243	TRP	CD2-CE2	5.44	1.47	1.41
1	A	187	TRP	CD2-CE2	5.29	1.47	1.41
1	C	167	TRP	CD2-CE2	5.28	1.47	1.41
1	A	167	TRP	CD2-CE2	5.27	1.47	1.41
1	C	187	TRP	CD2-CE2	5.08	1.47	1.41

All (1) bond angle outliers are listed below:

Mol	Chain	Res	Type	Atoms	Z	Observed(°)	Ideal(°)
1	A	217	ARG	NE-CZ-NH1	-6.02	117.29	120.30

There are no chirality outliers.

There are no planarity outliers.

### 5.2 Close contacts

In the following table, the Non-H and H(model) columns list the number of non-hydrogen atoms and hydrogen atoms in the chain respectively. The H(added) column lists the number of hydrogens added by MolProbity. The Clashes column lists the number of clashes within the asymmetric unit, and the number in parentheses is this value normalized per 1000 atoms of the molecule in the



chain. The Symm-Clashes column gives symmetry related clashes, in the same way as for the Clashes column.

Mol	Chain	Non-H	H(model)	H(added)	Clashes	Symm-Clashes
1	A	2398	0	0	8	1
1	C	2402	0	0	2	0
2	B	2083	0	8	7	0
2	D	2063	0	0	5	0
3	A	1	0	0	0	0
3	B	1	0	0	0	0
3	C	1	0	0	0	0
4	A	31	0	12	2	0
4	C	31	0	12	0	0
5	B	6	0	8	1	0
5	D	6	0	8	1	0
6	A	154	0	0	1	1
6	B	118	0	0	1	0
6	C	82	0	0	0	0
6	D	79	0	0	0	0
All	All	9456	0	48	19	1

Clashscore is defined as the number of clashes calculated for the entry per 1000 atoms (including hydrogens) of the entry. The overall clashscore for this entry is 2.

The worst 5 of 19 close contacts within the same asymmetric unit are listed below.

Atom-1	Atom-2	Distance(Å)	Clash(Å)
2:B:193:CYS:SG	5:B:502:SGM:S1	2.34	1.24
2:D:193:CYS:SG	5:D:501:SGM:S1	2.64	0.95
2:B:175:VAL:HB	2:B:176:PRO:CD	2.25	0.67
2:B:317:GLN:NE2	6:B:613:HOH:O	2.27	0.66
1:A:71:HIS:NE2	2:B:296:HIS:CD2	2.66	0.64

All (1) symmetry-related close contacts are listed below. The label for Atom-2 includes the symmetry operator and encoded unit-cell translations to be applied.

Atom-1	Atom-2	Distance(Å)	Clash(Å)
1:A:217:ARG:NH1	6:A:516:HOH:O[4_445]	2.06	0.14

## 5.3 Torsion angles

### 5.3.1 Protein backbone ⓘ

In the following table, the Percentiles column shows the percent Ramachandran outliers of the chain as a percentile score with respect to all X-ray entries followed by that with respect to entries of similar resolution. The Analysed column shows the number of residues for which the backbone conformation was analysed, and the total number of residues.

Mol	Chain	Analysed	Favoured	Allowed	Outliers	Percentiles	
1	A	293/299 (98%)	279 (95%)	12 (4%)	2 (1%)	30	23
1	C	296/299 (99%)	283 (96%)	11 (4%)	2 (1%)	30	23
2	B	256/258 (99%)	252 (98%)	4 (2%)	0	100	100
2	D	253/258 (98%)	246 (97%)	6 (2%)	1 (0%)	43	39
All	All	1098/1114 (99%)	1060 (96%)	33 (3%)	5 (0%)	38	33

All (5) Ramachandran outliers are listed below:

Mol	Chain	Res	Type
1	C	164	VAL
1	A	164	VAL
1	A	16	GLY
2	D	427	PRO
1	C	228	PRO

### 5.3.2 Protein sidechains ⓘ

In the following table, the Percentiles column shows the percent sidechain outliers of the chain as a percentile score with respect to all X-ray entries followed by that with respect to entries of similar resolution. The Analysed column shows the number of residues for which the sidechain conformation was analysed, and the total number of residues.

Mol	Chain	Analysed	Rotameric	Outliers	Percentiles	
1	A	261/262 (100%)	250 (96%)	11 (4%)	40	38
1	C	262/262 (100%)	247 (94%)	15 (6%)	29	24
2	B	232/232 (100%)	225 (97%)	7 (3%)	53	55
2	D	229/232 (99%)	218 (95%)	11 (5%)	35	32
All	All	984/988 (100%)	940 (96%)	44 (4%)	39	35

5 of 44 residues with a non-rotameric sidechain are listed below:

Mol	Chain	Res	Type
1	C	55	LEU
1	C	137	THR
2	D	384	LEU
1	C	75	LYS
1	C	103	LEU

Some sidechains can be flipped to improve hydrogen bonding and reduce clashes. There are no such sidechains identified.

### 5.3.3 RNA ⓘ

There are no RNA chains in this entry.

## 5.4 Non-standard residues in protein, DNA, RNA chains ⓘ

2 non-standard protein/DNA/RNA residues are modelled in this entry.

In the following table, the Counts columns list the number of bonds (or angles) for which Mogul statistics could be retrieved, the number of bonds (or angles) that are observed in the model and the number of bonds (or angles) that are defined in the chemical component dictionary. The Link column lists molecule types, if any, to which the group is linked. The Z score for a bond length (or angle) is the number of standard deviations the observed value is removed from the expected value. A bond length (or angle) with  $|Z| > 2$  is considered an outlier worth inspection. RMSZ is the root-mean-square of all Z scores of the bond lengths (or angles).

Mol	Type	Chain	Res	Link	Bond lengths			Bond angles		
					Counts	RMSZ	$\# Z  > 2$	Counts	RMSZ	$\# Z  > 2$
1	TPO	A	160	1	10,10,11	5.93	1 (10%)	12,14,16	1.27	1 (8%)
1	TPO	C	160	1	10,10,11	5.70	1 (10%)	12,14,16	1.02	0

In the following table, the Chirals column lists the number of chiral outliers, the number of chiral centers analysed, the number of these observed in the model and the number defined in the chemical component dictionary. Similar counts are reported in the Torsion and Rings columns. '-' means no outliers of that kind were identified.

Mol	Type	Chain	Res	Link	Chirals	Torsions	Rings
1	TPO	A	160	1	-	0/9/11/13	0/0/0/0
1	TPO	C	160	1	-	0/9/11/13	0/0/0/0

All (2) bond length outliers are listed below:

Mol	Chain	Res	Type	Atoms	Z	Observed(Å)	Ideal(Å)
1	A	160	TPO	O-C	18.60	1.24	1.11
1	C	160	TPO	O-C	17.86	1.23	1.11

All (1) bond angle outliers are listed below:

Mol	Chain	Res	Type	Atoms	Z	Observed(°)	Ideal(°)
1	A	160	TPO	C-CA-N	-2.40	108.03	111.94

There are no chirality outliers.

There are no torsion outliers.

There are no ring outliers.

## 5.5 Carbohydrates ⓘ

There are no carbohydrates in this entry.

## 5.6 Ligand geometry ⓘ

Of 7 ligands modelled in this entry, 3 are monoatomic - leaving 4 for Mogul analysis.

In the following table, the Counts columns list the number of bonds (or angles) for which Mogul statistics could be retrieved, the number of bonds (or angles) that are observed in the model and the number of bonds (or angles) that are defined in the chemical component dictionary. The Link column lists molecule types, if any, to which the group is linked. The Z score for a bond length (or angle) is the number of standard deviations the observed value is removed from the expected value. A bond length (or angle) with  $|Z| > 2$  is considered an outlier worth inspection. RMSZ is the root-mean-square of all Z scores of the bond lengths (or angles).

Mol	Type	Chain	Res	Link	Bond lengths			Bond angles		
					Counts	RMSZ	$\# Z  > 2$	Counts	RMSZ	$\# Z  > 2$
4	ATP	A	302	3	33,33,33	1.14	2 (6%)	52,52,52	1.68	9 (17%)
5	SGM	B	502	-	5,5,5	0.56	0	5,5,5	0.57	0
4	ATP	C	301	3	33,33,33	1.15	2 (6%)	52,52,52	1.76	10 (19%)
5	SGM	D	501	-	5,5,5	0.49	0	5,5,5	0.69	0

In the following table, the Chirals column lists the number of chiral outliers, the number of chiral centers analysed, the number of these observed in the model and the number defined in the chemical component dictionary. Similar counts are reported in the Torsion and Rings columns. '-' means no outliers of that kind were identified.

Mol	Type	Chain	Res	Link	Chirals	Torsions	Rings
4	ATP	A	302	3	-	0/22/38/38	0/1/3/3
5	SGM	B	502	-	-	0/4/4/4	0/0/0/0
4	ATP	C	301	3	-	0/22/38/38	0/1/3/3
5	SGM	D	501	-	-	0/4/4/4	0/0/0/0

All (4) bond length outliers are listed below:

Mol	Chain	Res	Type	Atoms	Z	Observed(Å)	Ideal(Å)
4	C	301	ATP	C5-C4	3.28	1.47	1.40
4	A	302	ATP	C5-C4	3.13	1.47	1.40
4	A	302	ATP	C4-N9	-2.74	1.33	1.37
4	C	301	ATP	C4-N9	-2.38	1.34	1.37

The worst 5 of 19 bond angle outliers are listed below:

Mol	Chain	Res	Type	Atoms	Z	Observed(°)	Ideal(°)
4	C	301	ATP	N3-C2-N1	-6.38	123.38	128.71
4	A	302	ATP	N3-C2-N1	-5.93	123.75	128.71
4	C	301	ATP	N3-C4-N9	5.70	135.72	125.43
4	A	302	ATP	N3-C4-N9	5.24	134.90	125.43
4	C	301	ATP	PB-O3B-PG	-3.50	121.41	131.68

There are no chirality outliers.

There are no torsion outliers.

There are no ring outliers.

## 5.7 Other polymers ⓘ

There are no such residues in this entry.

## 5.8 Polymer linkage issues

There are no chain breaks in this entry.

## 6 Fit of model and data ⓘ

### 6.1 Protein, DNA and RNA chains ⓘ

In the following table, the column labelled ‘#RSRZ> 2’ contains the number (and percentage) of RSRZ outliers, followed by percent RSRZ outliers for the chain as percentile scores relative to all X-ray entries and entries of similar resolution. The OWAB column contains the minimum, median, 95<sup>th</sup> percentile and maximum values of the occupancy-weighted average B-factor per residue. The column labelled ‘Q< 0.9’ lists the number of (and percentage) of residues with an average occupancy less than 0.9.

Mol	Chain	Analysed	<RSRZ>	#RSRZ>2	OWAB(Å <sup>2</sup> )	Q<0.9
1	A	295/299 (98%)	0.31	13 (4%) 33 37	17, 28, 62, 80	0
1	C	298/299 (99%)	1.19	63 (21%) 1 1	31, 53, 98, 116	0
2	B	258/258 (100%)	0.48	16 (6%) 20 22	19, 32, 51, 78	0
2	D	254/258 (98%)	0.92	44 (17%) 2 2	25, 50, 82, 96	0
All	All	1105/1114 (99%)	0.72	136 (12%) 5 5	17, 40, 82, 116	0

The worst 5 of 136 RSRZ outliers are listed below:

Mol	Chain	Res	Type	RSRZ
1	C	225	VAL	8.8
1	C	295[A]	HIS	8.3
1	C	226	VAL	8.0
2	B	175	VAL	7.8
1	A	95	ALA	7.0

### 6.2 Non-standard residues in protein, DNA, RNA chains ⓘ

In the following table, the Atoms column lists the number of modelled atoms in the group and the number defined in the chemical component dictionary. LLDF column lists the quality of electron density of the group with respect to its neighbouring residues in protein, DNA or RNA chains. The B-factors column lists the minimum, median, 95<sup>th</sup> percentile and maximum values of B factors of atoms in the group. The column labelled ‘Q< 0.9’ lists the number of atoms with occupancy less than 0.9.

Mol	Type	Chain	Res	Atoms	RSR	LLDF	B-factors(Å <sup>2</sup> )	Q<0.9
1	TPO	A	160	11/12	0.08	-0.98	22,22,23,24	0
1	TPO	C	160	11/12	0.10	-1.23	41,45,51,51	0

### 6.3 Carbohydrates ⓘ

There are no carbohydrates in this entry.

### 6.4 Ligands ⓘ

In the following table, the Atoms column lists the number of modelled atoms in the group and the number defined in the chemical component dictionary. LLDF column lists the quality of electron density of the group with respect to its neighbouring residues in protein, DNA or RNA chains. The B-factors column lists the minimum, median, 95<sup>th</sup> percentile and maximum values of B factors of atoms in the group. The column labelled 'Q< 0.9' lists the number of atoms with occupancy less than 0.9.

Mol	Type	Chain	Res	Atoms	RSR	LLDF	B-factors(Å <sup>2</sup> )	Q<0.9
5	SGM	B	502	6/6	0.27	4.63	48,50,52,57	0
5	SGM	D	501	6/6	0.35	4.58	59,61,64,65	0
4	ATP	A	302	31/31	0.13	-0.22	29,36,52,52	4
4	ATP	C	301	31/31	0.14	-0.45	43,54,58,59	4
3	MG	B	501	1/1	0.10	-0.63	40,40,40,40	0
3	MG	A	301	1/1	0.07	-1.88	37,37,37,37	0
3	MG	C	302	1/1	0.07	-2.24	57,57,57,57	0

### 6.5 Other polymers ⓘ

There are no such residues in this entry.