



Full wwPDB X-ray Structure Validation Report

Feb 28, 2014 – 02:58 PM GMT

PDB ID : 4EOS
Title : Thr 160 phosphorylated CDK2 WT - human cyclin A3 complex with the inhibitor RO3306
Authors : Echalier, A.; Cot, E.; Camasses, A.; Hodimont, E.; Hoh, F.; Sheinerman, F.; Krasinska, L.; Fisher, D.
Deposited on : 2012-04-14
Resolution : 2.57 Å(reported)

This is a full wwPDB validation report for a publicly released PDB entry.
We welcome your comments at validation@mail.wwpdb.org
A user guide is available at <http://wwpdb.org/ValidationPDFNotes.html>

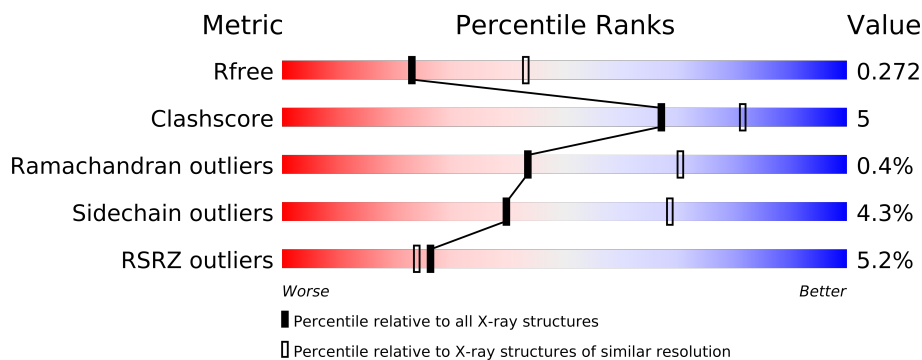
The following versions of software and data (see [references](#)) were used in the production of this report:

MolProbity : 4.02b-467
Mogul : 1.15 2013
Xtriage (Phenix) : dev-1323
EDS : stable22639
Percentile statistics : 21963
Refmac : 5.8.0049
CCP4 : 6.3.0 (Settle)
Ideal geometry (proteins) : Engh & Huber (2001)
Ideal geometry (DNA, RNA) : Parkinson et. al. (1996)
Validation Pipeline (wwPDB-VP) : stable22683

1 Overall quality at a glance

The reported resolution of this entry is 2.57 Å.

Percentile scores (ranging between 0-100) for global validation metrics of the entry are shown in the following graphic. The table shows the number of entries on which the scores are based.



Metric	Whole archive (#Entries)	Similar resolution (#Entries, resolution range(Å))
R_{free}	66092	1891 (2.60-2.56)
Clashscore	79885	2358 (2.60-2.56)
Ramachandran outliers	78287	2316 (2.60-2.56)
Sidechain outliers	78261	2316 (2.60-2.56)
RSRZ outliers	66119	1891 (2.60-2.56)

The table below summarises the geometric issues observed across the polymeric chains and their fit to the electron density. The red, orange, yellow and green segments on the lower bar indicate the fraction of residues that contain outliers for ≥ 3 , 2, 1 and 0 types of geometric quality criteria. The upper red bar (where present) indicates the fraction of residues that have poor fit to the electron density.

Mol	Chain	Length	Quality of chain
1	A	300	
1	C	300	
2	B	258	
2	D	258	

2 Entry composition

There are 4 unique types of molecules in this entry. The entry contains 9110 atoms, of which 0 are hydrogen and 0 are deuterium.

In the tables below, the ZeroOcc column contains the number of atoms modelled with zero occupancy, the AltConf column contains the number of residues with at least one atom in alternate conformation and the Trace column contains the number of residues modelled with at most 2 atoms.

- Molecule 1 is a protein called Cyclin-dependent kinase 2.

Mol	Chain	Residues	Atoms						ZeroOcc	AltConf	Trace
1	A	297	Total	C	N	O	P	S	0	1	0
			2395	1555	410	421	1	8			
1	C	297	Total	C	N	O	P	S	0	2	0
			2406	1560	407	430	1	8			

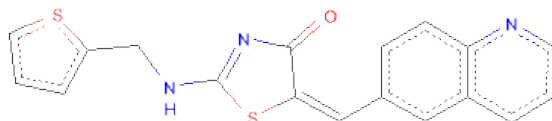
There are 6 discrepancies between the modelled and reference sequences:

Chain	Residue	Modelled	Actual	Comment	Reference
A	-2	PRO	-	EXPRESSION TAG	UNP P24941
A	-1	GLY	-	EXPRESSION TAG	UNP P24941
A	0	SER	-	EXPRESSION TAG	UNP P24941
C	-2	PRO	-	EXPRESSION TAG	UNP P24941
C	-1	GLY	-	EXPRESSION TAG	UNP P24941
C	0	SER	-	EXPRESSION TAG	UNP P24941

- Molecule 2 is a protein called Cyclin-A2.

Mol	Chain	Residues	Atoms					ZeroOcc	AltConf	Trace
2	B	257	Total	C	N	O	S	0	0	0
			2076	1345	338	382	11			
2	D	255	Total	C	N	O	S	0	0	0
			2059	1334	335	379	11			

- Molecule 3 is (5E)-5-(QUINOLIN-6-YLMETHYLIDENE)-2-[(THIOPHEN-2-YLMETHYL) AMINO]-1,3-THIAZOL-4(5H)-ONE (three-letter code: 1RO) (formula: C₁₈H₁₃N₃OS₂).



Mol	Chain	Residues	Atoms					ZeroOcc	AltConf
3	A	1	Total	C	N	O	S	0	0
			24	18	3	1	2		
3	C	1	Total	C	N	O	S	0	0
			24	18	3	1	2		

- Molecule 4 is water.

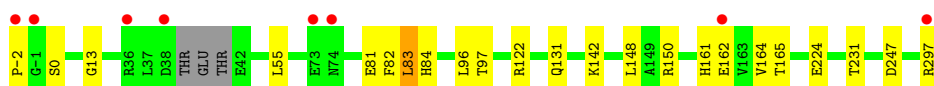
Mol	Chain	Residues	Atoms		ZeroOcc	AltConf
4	A	46	Total	O	0	0
			46	46		
4	B	25	Total	O	0	0
			25	25		
4	C	30	Total	O	0	0
			30	30		
4	D	25	Total	O	0	0
			25	25		

3 Residue-property plots

These plots are drawn for all protein, RNA and DNA chains in the entry. The first graphic for a chain summarises the proportions of errors displayed in the second graphic. The second graphic shows the sequence view annotated by issues in geometry and electron density. Residues are color-coded according to the number of geometric quality criteria for which they contain at least one outlier: green = 0, yellow = 1, orange = 2 and red = 3 or more. A red dot above a residue indicates a poor fit to the electron density ($RSRZ > 2$). Stretches of 2 or more consecutive residues without any outlier are shown as a green connector. Residues present in the sample, but not in the model, are shown in grey.

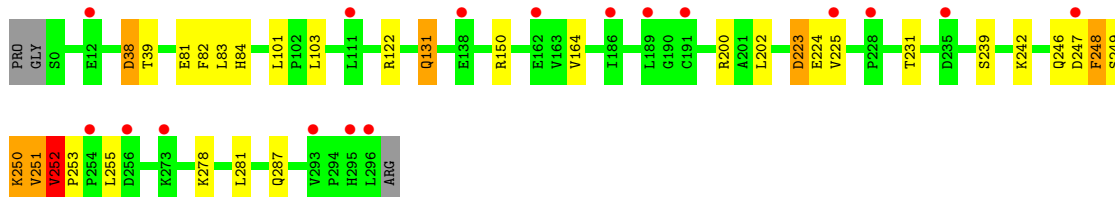
- Molecule 1: Cyclin-dependent kinase 2

Chain A: 



- Molecule 1: Cyclin-dependent kinase 2

Chain C: 



- Molecule 2: Cyclin-A2

Chain B: 



- Molecule 2: Cyclin-A2

Chain D: 



4 Data and refinement statistics

Property	Value	Source
Space group	P 21 21 21	Depositor
Cell constants a, b, c, α , β , γ	74.65Å 133.34Å 149.10Å 90.00° 90.00° 90.00°	Depositor
Resolution (Å)	30.44 – 2.57 30.43 – 2.57	Depositor EDS
% Data completeness (in resolution range)	98.7 (30.44-2.57) 98.7 (30.43-2.57)	Depositor EDS
R_{merge}	(Not available)	Depositor
R_{sym}	(Not available)	Depositor
$\langle I/\sigma(I) \rangle$ ¹	1.88 (at 2.57Å)	Xtriage
Refinement program	REFMAC 5.5.0109	Depositor
R, R_{free}	0.230 , 0.274 0.229 , 0.272	Depositor DCC
R_{free} test set	2393 reflections (5.31%)	DCC
Wilson B-factor (Å ²)	49.2	Xtriage
Anisotropy	0.118	Xtriage
Bulk solvent k_{sol} (e/Å ³), B_{sol} (Å ²)	0.33 , 19.3	EDS
Estimated twinning fraction	No twinning to report.	Xtriage
L-test for twinning	$\langle L \rangle = 0.46$, $\langle L^2 \rangle = 0.29$	Xtriage
Outliers	2 of 47493 reflections (0.004%)	Xtriage
F_o, F_c correlation	0.92	EDS
Total number of atoms	9110	wwPDB-VP
Average B, all atoms (Å ²)	52.0	wwPDB-VP

Xtriage's analysis on translational NCS is as follows: *The largest off-origin peak in the Patterson function is 3.22% of the height of the origin peak. No significant pseudotranslation is detected.*

¹Intensities estimated from amplitudes.

5 Model quality

5.1 Standard geometry

Bond lengths and bond angles in the following residue types are not validated in this section: TPO, 1RO

The Z score for a bond length (or angle) is the number of standard deviations the observed value is removed from the expected value. A bond length (or angle) with $|Z| > 5$ is considered an outlier worth inspection. RMSZ is the root-mean-square of all Z scores of the bond lengths (or angles).

Mol	Chain	Bond lengths		Bond angles	
		RMSZ	$\# Z > 5$	RMSZ	$\# Z > 5$
1	A	0.46	0/2448	0.58	3/3317 (0.1%)
1	C	0.49	0/2456	0.60	3/3332 (0.1%)
2	B	0.32	0/2126	0.47	0/2886
2	D	0.33	0/2109	0.49	0/2864
All	All	0.41	0/9139	0.54	6/12399 (0.0%)

There are no bond length outliers.

All (6) bond angle outliers are listed below:

Mol	Chain	Res	Type	Atoms	Z	Observed(°)	Ideal(°)
1	A	84	HIS	N-CA-CB	-8.33	95.61	110.60
1	C	251	VAL	N-CA-C	-7.71	90.18	111.00
1	A	83	LEU	N-CA-C	-6.12	94.48	111.00
1	C	251	VAL	CB-CA-C	-5.68	100.60	111.40
1	C	84	HIS	N-CA-CB	-5.33	101.00	110.60
1	A	84	HIS	N-CA-C	5.13	124.84	111.00

There are no chirality outliers.

There are no planarity outliers.

5.2 Close contacts

In the following table, the Non-H and H(model) columns list the number of non-hydrogen atoms and hydrogen atoms in the chain respectively. The H(added) column lists the number of hydrogens added by MolProbity. The Clashes column lists the number of clashes within the asymmetric unit, and the number in parentheses is this value normalized per 1000 atoms of the molecule in the chain. The Symm-Clashes column gives symmetry related clashes, in the same way as for the Clashes column.

Mol	Chain	Non-H	H(model)	H(added)	Clashes	Symm-Clashes
1	A	2395	0	0	8	0
1	C	2406	0	0	23	0
2	B	2076	0	0	1	0
2	D	2059	0	0	2	0
3	A	24	0	13	10	0
3	C	24	0	13	6	0
4	A	46	0	0	0	0
4	B	25	0	0	1	0
4	C	30	0	0	0	0
4	D	25	0	0	0	0
All	All	9110	0	26	45	0

Clashscore is defined as the number of clashes calculated for the entry per 1000 atoms (including hydrogens) of the entry. The overall clashscore for this entry is 5.

All (45) close contacts within the same asymmetric unit are listed below.

Atom-1	Atom-2	Distance(Å)	Clash(Å)
1:C:248:PHE:O	1:C:249:SER:OG	1.67	1.11
1:C:252:VAL:CG1	1:C:253:PRO:CD	2.30	1.08
1:C:224:GLU:OE2	1:C:231:THR:OG1	1.72	1.08
3:C:301:1RO:H13	3:C:301:1RO:O1	1.61	1.01
1:C:250:LYS:C	1:C:250:LYS:CD	2.30	0.94
1:C:250:LYS:CD	1:C:251:VAL:N	2.30	0.93
1:C:252:VAL:CG1	1:C:253:PRO:N	2.29	0.92
1:C:250:LYS:CG	1:C:251:VAL:N	2.30	0.90
3:A:301:1RO:O1	3:A:301:1RO:C2	2.26	0.83
1:A:82:PHE:CD2	1:A:83:LEU:O	2.32	0.81
3:C:301:1RO:C2	3:C:301:1RO:O1	2.29	0.80
1:C:249:SER:CA	1:C:251:VAL:O	2.30	0.79
1:C:251:VAL:O	1:C:251:VAL:CG1	2.30	0.78
3:A:301:1RO:N2	3:A:301:1RO:C19	2.48	0.74
3:C:301:1RO:C19	3:C:301:1RO:N2	2.49	0.73
2:B:193:CYS:SG	4:B:506:HOH:O	2.52	0.68
1:C:252:VAL:CB	1:C:253:PRO:CD	2.67	0.66
3:A:301:1RO:H13	3:A:301:1RO:O1	1.94	0.66
1:C:38:ASP:OD2	1:C:38:ASP:N	2.30	0.65
3:C:301:1RO:H13	3:C:301:1RO:C13	2.27	0.64
1:C:82:PHE:CD2	1:C:83:LEU:O	2.53	0.61
1:C:253:PRO:CA	1:C:255:LEU:N	2.66	0.59
1:C:131[A]:GLN:NE2	1:C:131[A]:GLN:N	2.52	0.58
1:C:246:GLN:O	1:C:247:ASP:CB	2.46	0.58
1:A:82:PHE:CE2	1:A:83:LEU:O	2.61	0.52
1:C:252:VAL:CG1	1:C:253:PRO:O	2.58	0.51

Continued on next page...

Continued from previous page...

Atom-1	Atom-2	Distance(Å)	Clash(Å)
1:C:250:LYS:O	1:C:251:VAL:C	2.44	0.51
1:C:249:SER:N	1:C:250:LYS:CB	2.74	0.50
3:A:301:1RO:C13	3:A:301:1RO:C2	2.90	0.49
3:A:301:1RO:H13	3:A:301:1RO:C13	2.44	0.48
1:C:249:SER:OG	1:C:249:SER:O	2.30	0.48
1:A:131:GLN:O	3:A:301:1RO:H4	2.15	0.47
1:C:252:VAL:CG2	1:C:253:PRO:CD	2.93	0.47
3:C:301:1RO:N2	3:C:301:1RO:C23	2.77	0.47
2:D:282:THR:O	2:D:285:THR:OG1	2.33	0.46
1:A:224:GLU:OE2	1:A:231:THR:OG1	2.33	0.46
1:A:83:LEU:O	3:A:301:1RO:H10	2.16	0.45
1:A:13:GLY:CA	3:A:301:1RO:H2	2.47	0.44
1:A:81:GLU:OE2	1:A:142:LYS:NZ	2.51	0.44
3:A:301:1RO:C23	3:A:301:1RO:N2	2.81	0.43
1:C:81:GLU:O	3:C:301:1RO:H9	2.19	0.42
1:A:81:GLU:O	3:A:301:1RO:H9	2.21	0.41
2:D:251:GLY:O	2:D:286:TYR:OH	2.39	0.41
1:C:223:ASP:O	1:C:225:VAL:N	2.54	0.40
1:C:250:LYS:C	1:C:251:VAL:O	2.51	0.40

There are no symmetry-related clashes.

5.3 Torsion angles

5.3.1 Protein backbone ⓘ

In the following table, the Percentiles column shows the percent Ramachandran outliers of the chain as a percentile score with respect to all X-ray entries followed by that with respect to entries of similar resolution. The Analysed column shows the number of residues for which the backbone conformation was analysed, and the total number of residues.

Mol	Chain	Analysed	Favoured	Allowed	Outliers	Percentiles
1	A	293/300 (98%)	285 (97%)	7 (2%)	1 (0%)	50 76
1	C	296/300 (99%)	276 (93%)	18 (6%)	2 (1%)	30 56
2	B	255/258 (99%)	250 (98%)	5 (2%)	0	100 100
2	D	253/258 (98%)	248 (98%)	4 (2%)	1 (0%)	43 70
All	All	1097/1116 (98%)	1059 (96%)	34 (3%)	4 (0%)	43 70

All (4) Ramachandran outliers are listed below:

Mol	Chain	Res	Type
1	A	164	VAL
1	C	164	VAL
1	C	252	VAL
2	D	197	VAL

5.3.2 Protein sidechains ⓘ

In the following table, the Percentiles column shows the percent sidechain outliers of the chain as a percentile score with respect to all X-ray entries followed by that with respect to entries of similar resolution. The Analysed column shows the number of residues for which the sidechain conformation was analysed, and the total number of residues.

Mol	Chain	Analysed	Rotameric	Outliers	Percentiles	
1	A	261/263 (99%)	248 (95%)	13 (5%)	34	61
1	C	263/263 (100%)	244 (93%)	19 (7%)	21	39
2	B	231/232 (100%)	225 (97%)	6 (3%)	59	84
2	D	229/232 (99%)	224 (98%)	5 (2%)	64	88
All	All	984/990 (99%)	941 (96%)	43 (4%)	40	67

All (43) residues with a non-rotameric sidechain are listed below:

Mol	Chain	Res	Type
1	A	-2	PRO
1	A	0	SER
1	A	55	LEU
1	A	96	LEU
1	A	97	THR
1	A	122	ARG
1	A	148	LEU
1	A	150	ARG
1	A	161	HIS
1	A	162	GLU
1	A	165	THR
1	A	247	ASP
1	A	297	ARG
2	B	196	LYS
2	B	232	LEU
2	B	283	ASP
2	B	292	LEU
2	B	296	HIS
2	B	378	ARG

Continued on next page...

Continued from previous page...

Mol	Chain	Res	Type
1	C	38	ASP
1	C	39	THR
1	C	101	LEU
1	C	103	LEU
1	C	122	ARG
1	C	131[A]	GLN
1	C	131[B]	GLN
1	C	150	ARG
1	C	200	ARG
1	C	202	LEU
1	C	223	ASP
1	C	239	SER
1	C	242	LYS
1	C	248	PHE
1	C	250	LYS
1	C	252	VAL
1	C	278	LYS
1	C	281	LEU
1	C	287	GLN
2	D	196	LYS
2	D	232	LEU
2	D	285	THR
2	D	292	LEU
2	D	328	LYS

Some sidechains can be flipped to improve hydrogen bonding and reduce clashes. There are no such sidechains identified.

5.3.3 RNA ⓘ

There are no RNA chains in this entry.

5.4 Non-standard residues in protein, DNA, RNA chains ⓘ

2 non-standard protein/DNA/RNA residues are modelled in this entry.

In the following table, the Counts columns list the number of bonds (or angles) for which Mogul statistics could be retrieved, the number of bonds (or angles) that are observed in the model and the number of bonds (or angles) that are defined in the chemical component dictionary. The Link column lists molecule types, if any, to which the group is linked. The Z score for a bond length (or angle) is the number of standard deviations the observed value is removed from the expected

value. A bond length (or angle) with $|Z| > 2$ is considered an outlier worth inspection. RMSZ is the root-mean-square of all Z scores of the bond lengths (or angles).

Mol	Type	Chain	Res	Link	Bond lengths			Bond angles		
					Counts	RMSZ	$\# Z > 2$	Counts	RMSZ	$\# Z > 2$
1	TPO	A	160	1	10,10,11	4.98	6 (60%)	12,14,16	1.63	3 (25%)
1	TPO	C	160	1	10,10,11	5.78	1 (10%)	12,14,16	0.94	0

In the following table, the Chirals column lists the number of chiral outliers, the number of chiral centers analysed, the number of these observed in the model and the number defined in the chemical component dictionary. Similar counts are reported in the Torsion and Rings columns. '-' means no outliers of that kind were identified.

Mol	Type	Chain	Res	Link	Chirals	Torsions	Rings
1	TPO	A	160	1	-	0/9/11/13	0/0/0/0
1	TPO	C	160	1	-	0/9/11/13	0/0/0/0

All (7) bond length outliers are listed below:

Mol	Chain	Res	Type	Atoms	Z	Observed(Å)	Ideal(Å)
1	C	160	TPO	O-C	18.10	1.23	1.11
1	A	160	TPO	O-C	14.19	1.21	1.11
1	A	160	TPO	P-O2P	-3.25	1.42	1.54
1	A	160	TPO	P-O1P	-3.17	1.40	1.51
1	A	160	TPO	OG1-CB	-3.07	1.39	1.45
1	A	160	TPO	P-O3P	-2.91	1.44	1.54
1	A	160	TPO	P-OG1	-2.21	1.53	1.59

All (3) bond angle outliers are listed below:

Mol	Chain	Res	Type	Atoms	Z	Observed(°)	Ideal(°)
1	A	160	TPO	OG1-P-O1P	-2.51	99.78	106.79
1	A	160	TPO	OG1-CB-CG2	-2.47	105.99	110.13
1	A	160	TPO	CB-CA-N	-2.35	106.31	109.60

There are no chirality outliers.

There are no torsion outliers.

There are no ring outliers.

5.5 Carbohydrates ⓘ

There are no carbohydrates in this entry.

5.6 Ligand geometry ⓘ

2 ligands are modelled in this entry.

In the following table, the Counts columns list the number of bonds (or angles) for which Mogul statistics could be retrieved, the number of bonds (or angles) that are observed in the model and the number of bonds (or angles) that are defined in the chemical component dictionary. The Link column lists molecule types, if any, to which the group is linked. The Z score for a bond length (or angle) is the number of standard deviations the observed value is removed from the expected value. A bond length (or angle) with $|Z| > 2$ is considered an outlier worth inspection. RMSZ is the root-mean-square of all Z scores of the bond lengths (or angles).

Mol	Type	Chain	Res	Link	Bond lengths			Bond angles		
					Counts	RMSZ	# $ Z > 2$	Counts	RMSZ	# $ Z > 2$
3	1RO	A	301	-	27,27,27	2.89	6 (22%)	37,37,37	3.66	14 (37%)
3	1RO	C	301	-	27,27,27	2.83	5 (18%)	37,37,37	3.45	17 (45%)

In the following table, the Chirals column lists the number of chiral outliers, the number of chiral centers analysed, the number of these observed in the model and the number defined in the chemical component dictionary. Similar counts are reported in the Torsion and Rings columns. '-' means no outliers of that kind were identified.

Mol	Type	Chain	Res	Link	Chirals	Torsions	Rings
3	1RO	A	301	-	-	0/6/21/21	0/2/4/4
3	1RO	C	301	-	-	0/6/21/21	0/2/4/4

All (11) bond length outliers are listed below:

Mol	Chain	Res	Type	Atoms	Z	Observed(Å)	Ideal(Å)
3	A	301	1RO	C11-C12	13.06	1.50	1.34
3	C	301	1RO	C11-C12	12.67	1.49	1.34
3	C	301	1RO	C3-C4	4.34	1.48	1.42
3	A	301	1RO	C3-C4	4.34	1.48	1.42
3	C	301	1RO	O1-C13	2.58	1.28	1.24
3	C	301	1RO	C15-N2	2.57	1.35	1.31
3	A	301	1RO	C13-N2	-2.29	1.33	1.37
3	C	301	1RO	C13-N2	-2.22	1.33	1.37
3	A	301	1RO	C15-N2	2.22	1.34	1.31
3	A	301	1RO	O1-C13	2.22	1.27	1.24
3	A	301	1RO	C5-C6	2.02	1.40	1.36

All (31) bond angle outliers are listed below:

Mol	Chain	Res	Type	Atoms	Z	Observed(°)	Ideal(°)
3	A	301	1RO	C1-C11-C12	-10.93	116.25	130.89
3	A	301	1RO	C12-C13-N2	8.99	118.82	113.61
3	C	301	1RO	C1-C11-C12	-7.89	120.33	130.89
3	A	301	1RO	N3-C15-N2	-7.56	116.31	123.89
3	C	301	1RO	C21-S2-C19	7.51	96.95	91.96
3	C	301	1RO	C22-C21-S2	-7.34	105.28	113.18
3	C	301	1RO	C12-C13-N2	7.21	117.79	113.61
3	C	301	1RO	N3-C15-N2	-6.94	116.93	123.89
3	A	301	1RO	C21-S2-C19	6.76	96.45	91.96
3	A	301	1RO	C22-C21-S2	-6.51	106.17	113.18
3	A	301	1RO	C13-C12-S1	-6.30	105.37	109.27
3	C	301	1RO	C13-C12-S1	-5.24	106.02	109.27
3	C	301	1RO	O1-C13-N2	-4.64	117.73	124.80
3	C	301	1RO	C11-C12-C13	4.63	129.22	122.55
3	A	301	1RO	O1-C13-N2	-4.56	117.84	124.80
3	C	301	1RO	C18-C19-C23	4.18	134.40	126.87
3	A	301	1RO	C18-C19-C23	4.03	134.15	126.87
3	C	301	1RO	C11-C12-S1	-3.74	124.76	129.26
3	A	301	1RO	S1-C15-N3	3.29	127.83	120.64
3	A	301	1RO	C15-S1-C12	3.25	90.72	88.33
3	A	301	1RO	C11-C12-C13	3.25	127.23	122.55
3	C	301	1RO	O1-C13-C12	3.24	124.48	122.48
3	C	301	1RO	C15-S1-C12	2.96	90.51	88.33
3	C	301	1RO	S1-C15-N3	2.94	127.06	120.64
3	A	301	1RO	C9-N1-C4	2.92	121.05	116.94
3	C	301	1RO	C9-N1-C4	2.86	120.97	116.94
3	A	301	1RO	C5-C4-N1	2.65	122.68	118.59
3	A	301	1RO	C3-C4-N1	-2.57	118.73	121.99
3	C	301	1RO	C5-C4-N1	2.46	122.39	118.59
3	C	301	1RO	C18-N3-C15	-2.41	118.81	122.81
3	C	301	1RO	C3-C4-N1	-2.38	118.97	121.99

There are no chirality outliers.

There are no torsion outliers.

There are no ring outliers.

5.7 Other polymers ⓘ

There are no such residues in this entry.

5.8 Polymer linkage issues

There are no chain breaks in this entry.

6 Fit of model and data ⓘ

6.1 Protein, DNA and RNA chains ⓘ

In the following table, the column labelled ‘#RSRZ > 2’ contains the number (and percentage) of RSRZ outliers, followed by percent RSRZ outliers for the chain as percentile scores relative to all X-ray entries and entries of similar resolution. The OWAB column contains the minimum, median, 95th percentile and maximum values of the occupancy-weighted average B-factor per residue. The column labelled ‘Q < 0.9’ lists the number of (and percentage) of residues with an average occupancy less than 0.9.

Mol	Chain	Analysed	<RSRZ>	#RSRZ>2	OWAB(Å ²)	Q<0.9
1	A	297/300 (99%)	-0.03	8 (2%) 52 50	28, 42, 68, 86	0
1	C	297/300 (99%)	0.33	17 (5%) 23 20	35, 51, 78, 86	0
2	B	257/258 (99%)	0.26	10 (3%) 37 35	33, 51, 72, 93	0
2	D	255/258 (98%)	0.51	23 (9%) 10 7	33, 57, 94, 115	0
All	All	1106/1116 (99%)	0.26	58 (5%) 26 24	28, 50, 81, 115	0

All (58) RSRZ outliers are listed below:

Mol	Chain	Res	Type	RSRZ
1	C	254	PRO	5.4
2	D	416	SER	4.6
2	B	284	ASP	4.2
2	D	323	GLN	3.7
2	D	176	PRO	3.6
1	C	295	HIS	3.6
2	D	284	ASP	3.6
1	C	189	LEU	3.4
2	B	432	LEU	3.3
1	C	111	LEU	3.2
2	B	283	ASP	3.2
1	C	12	GLU	3.1
1	A	73	GLU	3.0
2	D	378	ARG	3.0
2	D	311	VAL	3.0
1	C	162	GLU	3.0
2	D	175	VAL	2.9
2	D	235	ALA	2.9
2	D	325	ALA	2.9
2	D	399	LEU	2.8
2	B	201	LYS	2.8

Continued on next page...

Continued from previous page...

Mol	Chain	Res	Type	RSRZ
2	D	334	MET	2.8
1	A	36	ARG	2.8
1	A	-2	PRO	2.6
2	D	336	LEU	2.6
1	C	296	LEU	2.5
2	D	232	LEU	2.5
1	C	293	VAL	2.5
2	D	280	TYR	2.5
2	D	423	LEU	2.5
1	A	-1	GLY	2.5
2	D	324	PRO	2.5
1	C	273	LYS	2.4
1	C	191	CYS	2.4
2	D	233	HIS	2.4
1	C	225	VAL	2.3
1	C	247	ASP	2.3
2	B	324	PRO	2.3
1	C	235	ASP	2.3
1	A	38	ASP	2.3
1	C	138[A]	GLU	2.3
1	C	228	PRO	2.3
2	B	323	GLN	2.3
2	B	198	GLY	2.3
2	B	280	TYR	2.2
1	A	74	ASN	2.2
2	B	403	GLN	2.2
2	D	341	LEU	2.1
2	D	191	VAL	2.1
1	C	256	ASP	2.1
1	A	297	ARG	2.1
1	A	162	GLU	2.1
1	C	186	ILE	2.1
2	D	356	ALA	2.1
2	B	176	PRO	2.1
2	D	429	THR	2.1
2	D	271	TYR	2.0
2	D	328	LYS	2.0

6.2 Non-standard residues in protein, DNA, RNA chains ⓘ

In the following table, the Atoms column lists the number of modelled atoms in the group and the number defined in the chemical component dictionary. LLDF column lists the quality of electron

density of the group with respect to its neighbouring residues in protein, DNA or RNA chains. The B-factors column lists the minimum, median, 95th percentile and maximum values of B factors of atoms in the group. The column labelled 'Q< 0.9' lists the number of atoms with occupancy less than 0.9.

Mol	Type	Chain	Res	Atoms	RSR	LLDF	B-factors(Å ²)	Q<0.9
1	TPO	C	160	11/12	0.11	-0.83	41,45,46,47	0
1	TPO	A	160	11/12	0.09	-1.00	34,38,40,40	0

6.3 Carbohydrates

There are no carbohydrates in this entry.

6.4 Ligands

In the following table, the Atoms column lists the number of modelled atoms in the group and the number defined in the chemical component dictionary. LLDF column lists the quality of electron density of the group with respect to its neighbouring residues in protein, DNA or RNA chains. The B-factors column lists the minimum, median, 95th percentile and maximum values of B factors of atoms in the group. The column labelled 'Q< 0.9' lists the number of atoms with occupancy less than 0.9.

Mol	Type	Chain	Res	Atoms	RSR	LLDF	B-factors(Å ²)	Q<0.9
3	1RO	A	301	24/24	0.14	-0.07	45,46,48,49	0
3	1RO	C	301	24/24	0.14	-0.51	46,48,49,50	0

6.5 Other polymers

There are no such residues in this entry.