



# wwPDB X-ray Structure Validation Summary Report

Mar 1, 2014 – 12:41 AM GMT

PDB ID : 1EU1  
Title : THE CRYSTAL STRUCTURE OF RHODOBACTER SPHAEROIDES  
DIMETHYLSULFOXIDE REDUCTASE REVEALS TWO DISTINCT  
MOLYBDENUM COORDINATION ENVIRONMENTS.  
Authors : Li, H.K.; Temple, K.; Rajagopalan, K.V.; Schindelin, H.  
Deposited on : 2000-04-13  
Resolution : 1.30 Å(reported)

This is a wwPDB validation summary report for a publicly released PDB entry.  
We welcome your comments at [validation@mail.wwpdb.org](mailto:validation@mail.wwpdb.org)  
A user guide is available at <http://wwpdb.org/ValidationPDFNotes.html>

---

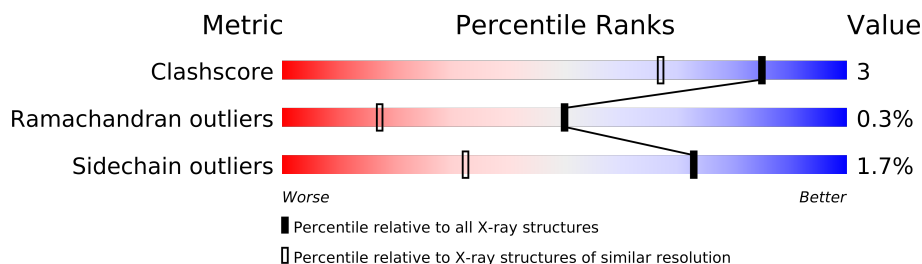
The following versions of software and data (see [references](#)) were used in the production of this report:

MolProbity : 4.02b-467  
Mogul : 1.15 2013  
Xtriage (Phenix) : **NOT EXECUTED**  
EDS : **NOT EXECUTED**  
Percentile statistics : 21963  
Ideal geometry (proteins) : Engh & Huber (2001)  
Ideal geometry (DNA, RNA) : Parkinson et. al. (1996)  
Validation Pipeline (wwPDB-VP) : stable22683

# 1 Overall quality at a glance

The reported resolution of this entry is 1.30 Å.

Percentile scores (ranging between 0-100) for global validation metrics of the entry are shown in the following graphic. The table shows the number of entries on which the scores are based.



Metric	Whole archive (#Entries)	Similar resolution (#Entries, resolution range(Å))
Clashscore	79885	1140 (1.34-1.26)
Ramachandran outliers	78287	1093 (1.34-1.26)
Sidechain outliers	78261	1092 (1.34-1.26)

The table below summarises the geometric issues observed across the polymeric chains and their fit to the electron density. The red, orange, yellow and green segments on the lower bar indicate the fraction of residues that contain outliers for  $\geq 3$ , 2, 1 and 0 types of geometric quality criteria. The upper red bar (where present) indicates the fraction of residues that have poor fit to the electron density.

Note EDS was not executed.

Mol	Chain	Length	Quality of chain
1	A	780	

## 2 Entry composition i

There are 9 unique types of molecules in this entry. The entry contains 7307 atoms, of which 0 are hydrogen and 0 are deuterium.

In the tables below, the ZeroOcc column contains the number of atoms modelled with zero occupancy, the AltConf column contains the number of residues with at least one atom in alternate conformation and the Trace column contains the number of residues modelled with at most 2 atoms.

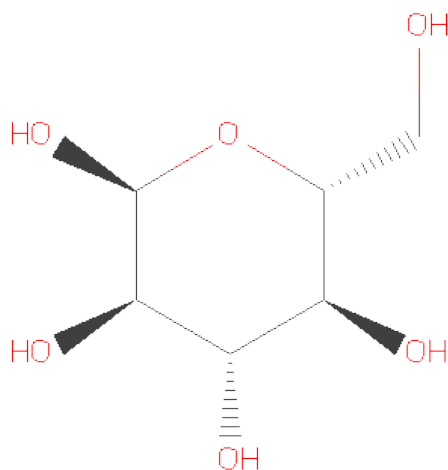
- Molecule 1 is a protein called DIMETHYL SULFOXIDE REDUCTASE.

Mol	Chain	Residues	Atoms					ZeroOcc	AltConf	Trace
			Total	C	N	O	S			
1	A	767	6048	3829	1034	1150	35	0	34	0

There is a discrepancy between the modelled and reference sequences:

Chain	Residue	Modelled	Actual	Comment	Reference
A	219	CSD	CYS	MODIFIED RESIDUE	UNP Q57366

- Molecule 2 is SUGAR (GLUCOSE) (three-letter code: GLC) (formula: C<sub>6</sub>H<sub>12</sub>O<sub>6</sub>).



Mol	Chain	Residues	Atoms			ZeroOcc	AltConf
			Total	C	O		
2	A	1	12	6	6	0	0
2	A	1	12	6	6	0	0
2	A	1	12	6	6	0	0

- Molecule 3 is SULFATE ION (three-letter code: SO4) (formula: O<sub>4</sub>S).

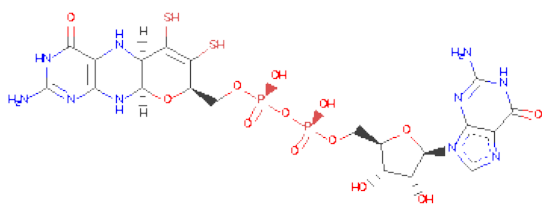


Mol	Chain	Residues	Atoms			ZeroOcc	AltConf
3	A	1	Total	O	S	0	0
			5	4	1		

- Molecule 4 is CADMIUM ION (three-letter code: CD) (formula: Cd).

Mol	Chain	Residues	Atoms		ZeroOcc	AltConf
4	A	1	Total	Cd	0	0
			1	1		

- Molecule 5 is 2-AMINO-5,6-DIMERCAPTO-7-METHYL-3,7,8A,9-TETRAHYDRO-8-OXA-1,3,9,10-TETRAAZA-ANTHRACEN-4-ONEGUANOSINE DINUCLEOTIDE (three-letter code: MGD) (formula: C<sub>20</sub>H<sub>26</sub>N<sub>10</sub>O<sub>13</sub>P<sub>2</sub>S<sub>2</sub>).



Mol	Chain	Residues	Atoms						ZeroOcc	AltConf
5	A	1	Total	C	N	O	P	S	0	1
			75	30	15	22	4	4		
5	A	1	Total	C	N	O	P	S	0	1
			83	35	15	25	4	4		

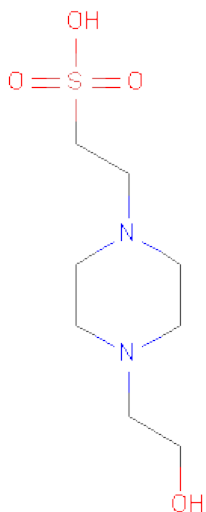
- Molecule 6 is MOLYBDENUM(VI) ION (three-letter code: 6MO) (formula: Mo).

Mol	Chain	Residues	Atoms		ZeroOcc	AltConf
6	A	1	Total	Mo	0	1
			2	2		

- Molecule 7 is OXYGEN ATOM (three-letter code: O) (formula: O).

Mol	Chain	Residues	Atoms		ZeroOcc	AltConf
7	A	2	Total	O	0	1
			3	3		

- Molecule 8 is 4-(2-HYDROXYETHYL)-1-PIPERAZINEETHANESULFONIC ACID (three-letter code: EPE) (formula: C<sub>8</sub>H<sub>18</sub>N<sub>2</sub>O<sub>4</sub>S).



Mol	Chain	Residues	Atoms					ZeroOcc	AltConf
8	A	1	Total	C	N	O	S	0	0
			15	8	2	4	1		

- Molecule 9 is water.

Mol	Chain	Residues	Atoms		ZeroOcc	AltConf
9	A	1039	Total	O	0	0
			1039	1039		

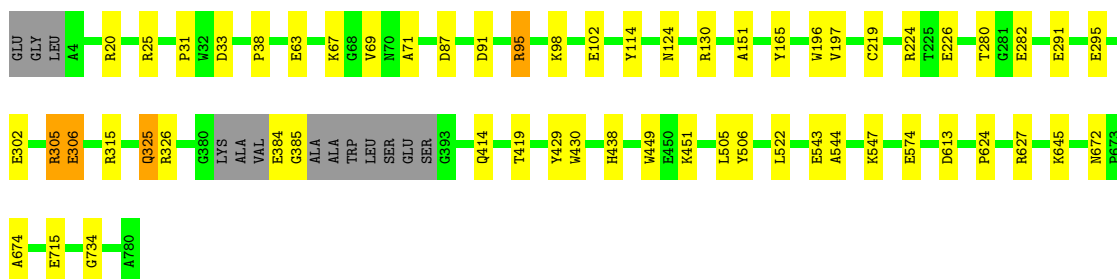
### 3 Residue-property plots

These plots are drawn for all protein, RNA and DNA chains in the entry. The first graphic for a chain summarises the proportions of errors displayed in the second graphic. The second graphic shows the sequence view annotated by issues in geometry and electron density. Residues are color-coded according to the number of geometric quality criteria for which they contain at least one outlier: green = 0, yellow = 1, orange = 2 and red = 3 or more. A red dot above a residue indicates a poor fit to the electron density ( $RSRZ > 2$ ). Stretches of 2 or more consecutive residues without any outlier are shown as a green connector. Residues present in the sample, but not in the model, are shown in grey.

Note EDS was not executed.

- Molecule 1: DIMETHYL SULFOXIDE REDUCTASE

Chain A: 



## 4 Data and refinement statistics

Xtriage (Phenix) and EDS were not executed - this section will therefore be incomplete.

Property	Value	Source
Space group	P 21 21 2	Depositor
Cell constants a, b, c, $\alpha$ , $\beta$ , $\gamma$	102.18Å 141.72Å 59.81Å 90.00° 90.00° 90.00°	Depositor
Resolution (Å)	10.00 – 1.30	Depositor
% Data completeness (in resolution range)	89.8 (10.00-1.30)	Depositor
$R_{merge}$	0.05	Depositor
$R_{sym}$	(Not available)	Depositor
Refinement program	REFMAC	Depositor
R, $R_{free}$	0.121 , 0.145	Depositor
Estimated twinning fraction	No twinning to report.	Xtriage
Total number of atoms	7307	wwPDB-VP
Average B, all atoms (Å <sup>2</sup> )	15.0	wwPDB-VP



## 5 Model quality ⓘ

### 5.1 Standard geometry ⓘ

Bond lengths and bond angles in the following residue types are not validated in this section: 6MO, MGD, CSD, GLC, O, CD, SO4, EPE

The Z score for a bond length (or angle) is the number of standard deviations the observed value is removed from the expected value. A bond length (or angle) with  $|Z| > 5$  is considered an outlier worth inspection. RMSZ is the root-mean-square of all Z scores of the bond lengths (or angles).

Mol	Chain	Bond lengths		Bond angles	
		RMSZ	$\# Z  > 5$	RMSZ	$\# Z  > 5$
1	A	0.52	0/6328	1.11	24/8580 (0.3%)

There are no bond length outliers.

The worst 5 of 24 bond angle outliers are listed below:

Mol	Chain	Res	Type	Atoms	Z	Observed(°)	Ideal(°)
1	A	25	ARG	CD-NE-CZ	14.89	144.44	123.60
1	A	130[A]	ARG	NE-CZ-NH1	-11.92	114.34	120.30
1	A	130[B]	ARG	NE-CZ-NH1	-11.92	114.34	120.30
1	A	305[A]	ARG	NE-CZ-NH2	-11.49	114.56	120.30
1	A	305[B]	ARG	NE-CZ-NH2	-11.49	114.56	120.30

There are no chirality outliers.

There are no planarity outliers.

### 5.2 Close contacts ⓘ

In the following table, the Non-H and H(model) columns list the number of non-hydrogen atoms and hydrogen atoms in the chain respectively. The H(added) column lists the number of hydrogens added by MolProbity. The Clashes column lists the number of clashes within the asymmetric unit, and the number in parentheses is this value normalized per 1000 atoms of the molecule in the chain. The Symm-Clashes column gives symmetry related clashes, in the same way as for the Clashes column.

Mol	Chain	Non-H	H(model)	H(added)	Clashes	Symm-Clashes
1	A	6048	0	5816	32	1
2	A	36	0	36	0	1
3	A	5	0	0	0	0
4	A	1	0	0	0	0

*Continued on next page...*

*Continued from previous page...*

Mol	Chain	Non-H	H(model)	H(added)	Clashes	Symm-Clashes
5	A	158	0	62	0	0
6	A	2	0	0	1	0
7	A	3	0	0	3	0
8	A	15	0	18	2	0
9	A	1039	0	0	6	0
All	All	7307	0	5932	34	1

Clashscore is defined as the number of clashes calculated for the entry per 1000 atoms (including hydrogens) of the entry. The overall clashscore for this entry is 3.

The worst 5 of 34 close contacts within the same asymmetric unit are listed below.

Atom-1	Atom-2	Distance(Å)	Clash(Å)
1:A:114[B]:TYR:OH	7:A:3002:O:O	1.59	1.19
1:A:124:ASN:HD21	1:A:384:GLU:HA	1.28	0.94
1:A:544:ALA:HA	1:A:547[A]:LYS:HE2	1.53	0.90
1:A:196:TRP:HE1	1:A:385:GLY:HA3	1.38	0.88
1:A:151:ALA:H	1:A:325:GLN:HE21	1.35	0.71

All (1) symmetry-related close contacts are listed below. The label for Atom-2 includes the symmetry operator and encoded unit-cell translations to be applied.

Atom-1	Atom-2	Distance(Å)	Clash(Å)
1:A:67[A]:LYS:NZ	2:A:2003:GLC:C5[1_554]	2.07	0.13

## 5.3 Torsion angles

### 5.3.1 Protein backbone ⓘ

In the following table, the Percentiles column shows the percent Ramachandran outliers of the chain as a percentile score with respect to all X-ray entries followed by that with respect to entries of similar resolution. The Analysed column shows the number of residues for which the backbone conformation was analysed, and the total number of residues.

Mol	Chain	Analysed	Favoured	Allowed	Outliers	Percentiles
1	A	794/780 (102%)	774 (98%)	18 (2%)	2 (0%)	50 17

All (2) Ramachandran outliers are listed below:

Mol	Chain	Res	Type
1	A	197	VAL

*Continued on next page...*

*Continued from previous page...*

Mol	Chain	Res	Type
1	A	734	GLY

### 5.3.2 Protein sidechains ⓘ

In the following table, the Percentiles column shows the percent sidechain outliers of the chain as a percentile score with respect to all X-ray entries followed by that with respect to entries of similar resolution. The Analysed column shows the number of residues for which the sidechain conformation was analysed, and the total number of residues.

Mol	Chain	Analysed	Rotameric	Outliers	Percentiles	
1	A	638/614 (104%)	627 (98%)	11 (2%)	73	32

5 of 11 residues with a non-rotameric sidechain are listed below:

Mol	Chain	Res	Type
1	A	325	GLN
1	A	429	TYR
1	A	449	TRP
1	A	306[B]	GLU
1	A	438	HIS

Some sidechains can be flipped to improve hydrogen bonding and reduce clashes. All (5) such sidechains are listed below:

Mol	Chain	Res	Type
1	A	241	GLN
1	A	325	GLN
1	A	458	GLN
1	A	606	ASN
1	A	672	ASN

### 5.3.3 RNA ⓘ

There are no RNA chains in this entry.

## 5.4 Non-standard residues in protein, DNA, RNA chains ⓘ

1 non-standard protein/DNA/RNA residue is modelled in this entry.

In the following table, the Counts columns list the number of bonds (or angles) for which Mogul statistics could be retrieved, the number of bonds (or angles) that are observed in the model and

the number of bonds (or angles) that are defined in the chemical component dictionary. The Link column lists molecule types, if any, to which the group is linked. The Z score for a bond length (or angle) is the number of standard deviations the observed value is removed from the expected value. A bond length (or angle) with  $|Z| > 2$  is considered an outlier worth inspection. RMSZ is the root-mean-square of all Z scores of the bond lengths (or angles).

Mol	Type	Chain	Res	Link	Bond lengths			Bond angles		
					Counts	RMSZ	$\# Z  > 2$	Counts	RMSZ	$\# Z  > 2$
1	CSD	A	219	1	7,7,8	7.99	3 (42%)	6,8,10	6.91	4 (66%)

In the following table, the Chirals column lists the number of chiral outliers, the number of chiral centers analysed, the number of these observed in the model and the number defined in the chemical component dictionary. Similar counts are reported in the Torsion and Rings columns. '-' means no outliers of that kind were identified.

Mol	Type	Chain	Res	Link	Chirals	Torsions	Rings
1	CSD	A	219	1	-	1/3/6/8	0/0/0/0

All (3) bond length outliers are listed below:

Mol	Chain	Res	Type	Atoms	Z	Observed(Å)	Ideal(Å)
1	A	219	CSD	O-C	19.71	1.25	1.11
1	A	219	CSD	CB-CA	-6.55	1.42	1.53
1	A	219	CSD	CB-SG	3.52	1.92	1.80

All (4) bond angle outliers are listed below:

Mol	Chain	Res	Type	Atoms	Z	Observed(°)	Ideal(°)
1	A	219	CSD	CB-CA-N	-13.91	87.81	110.16
1	A	219	CSD	C-CA-N	-7.59	106.25	113.83
1	A	219	CSD	CA-CB-SG	4.60	117.38	110.82
1	A	219	CSD	OD2-SG-OD1	-3.30	103.92	109.39

There are no chirality outliers.

All (1) torsion outliers are listed below:

Mol	Chain	Res	Type	Atoms
1	A	219	CSD	CA-CB-SG-OD1

There are no ring outliers.

## 5.5 Carbohydrates ⓘ

There are no carbohydrates in this entry.

## 5.6 Ligand geometry ⓘ

Of 15 ligands modelled in this entry, 6 are monoatomic - leaving 9 for Mogul analysis.

In the following table, the Counts columns list the number of bonds (or angles) for which Mogul statistics could be retrieved, the number of bonds (or angles) that are observed in the model and the number of bonds (or angles) that are defined in the chemical component dictionary. The Link column lists molecule types, if any, to which the group is linked. The Z score for a bond length (or angle) is the number of standard deviations the observed value is removed from the expected value. A bond length (or angle) with  $|Z| > 2$  is considered an outlier worth inspection. RMSZ is the root-mean-square of all Z scores of the bond lengths (or angles).

Mol	Type	Chain	Res	Link	Bond lengths			Bond angles		
					Counts	RMSZ	# $ Z  > 2$	Counts	RMSZ	# $ Z  > 2$
5	MGD	A	1001[A]	6	30,30,52	2.15	11 (36%)	41,47,81	1.63	5 (12%)
5	MGD	A	1001[B]	6	30,30,52	2.14	11 (36%)	41,47,81	1.54	5 (12%)
5	MGD	A	1002[A]	-	37,39,52	2.04	11 (29%)	50,60,81	1.45	6 (12%)
5	MGD	A	1002[B]	6	37,39,52	2.03	11 (29%)	50,60,81	1.48	4 (8%)
8	EPE	A	2001	-	15,15,15	2.56	3 (20%)	20,20,20	1.78	3 (15%)
2	GLC	A	2002	-	12,12,12	1.16	1 (8%)	17,17,17	1.08	2 (11%)
2	GLC	A	2003	-	12,12,12	1.00	0	17,17,17	1.59	2 (11%)
2	GLC	A	2004	-	12,12,12	1.07	0	17,17,17	1.13	2 (11%)
3	SO4	A	2005	-	4,4,4	1.00	0	6,6,6	0.22	0

In the following table, the Chirals column lists the number of chiral outliers, the number of chiral centers analysed, the number of these observed in the model and the number defined in the chemical component dictionary. Similar counts are reported in the Torsion and Rings columns. '-' means no outliers of that kind were identified.

Mol	Type	Chain	Res	Link	Chirals	Torsions	Rings
5	MGD	A	1001[A]	6	-	0/12/40/66	0/0/3/6
5	MGD	A	1001[B]	6	-	0/12/40/66	0/0/3/6
5	MGD	A	1002[A]	-	-	0/18/59/66	0/1/4/6
5	MGD	A	1002[B]	6	-	0/18/59/66	0/1/4/6
8	EPE	A	2001	-	-	0/9/19/19	0/1/1/1
2	GLC	A	2002	-	1/1/5/5	0/2/22/22	0/1/1/1
2	GLC	A	2003	-	1/1/5/5	0/2/22/22	0/1/1/1
2	GLC	A	2004	-	1/1/5/5	0/2/22/22	0/1/1/1
3	SO4	A	2005	-	-	0/0/0/0	0/0/0/0

The worst 5 of 48 bond length outliers are listed below:

Mol	Chain	Res	Type	Atoms	Z	Observed(Å)	Ideal(Å)
8	A	2001	EPE	O3S-S	8.58	1.67	1.46
5	A	1002[A]	MGD	C19-N19	5.11	1.40	1.32
5	A	1001[B]	MGD	C14-N15	4.98	1.52	1.45
5	A	1002[B]	MGD	C19-N19	4.97	1.40	1.32
5	A	1001[A]	MGD	C14-N15	4.86	1.52	1.45

The worst 5 of 29 bond angle outliers are listed below:

Mol	Chain	Res	Type	Atoms	Z	Observed(°)	Ideal(°)
5	A	1002[B]	MGD	C17-C16-C21	6.18	120.29	114.56
5	A	1001[B]	MGD	C17-C16-C21	5.02	119.21	114.56
5	A	1002[A]	MGD	C17-C16-C21	4.89	119.09	114.56
5	A	1001[A]	MGD	C17-C16-C21	4.74	118.95	114.56
8	A	2001	EPE	O3S-S-O1S	-4.67	101.68	111.78

All (3) chirality outliers are listed below:

Mol	Chain	Res	Type	Atom
2	A	2003	GLC	C1
2	A	2002	GLC	C1
2	A	2004	GLC	C1

There are no torsion outliers.

There are no ring outliers.

## 5.7 Other polymers ⓘ

There are no such residues in this entry.

## 5.8 Polymer linkage issues

There are no chain breaks in this entry.

## 6 Fit of model and data ⓘ

### 6.1 Protein, DNA and RNA chains ⓘ

EDS was not executed - this section will therefore be empty.

### 6.2 Non-standard residues in protein, DNA, RNA chains ⓘ

EDS was not executed - this section will therefore be empty.

### 6.3 Carbohydrates ⓘ

EDS was not executed - this section will therefore be empty.

### 6.4 Ligands ⓘ

EDS was not executed - this section will therefore be empty.

### 6.5 Other polymers ⓘ

EDS was not executed - this section will therefore be empty.