



# Full wwPDB X-ray Structure Validation Report

Feb 26, 2014 – 10:50 PM GMT

PDB ID : 2EX6  
Title : Crystal structure of penicillin binding protein 4 (dacB) from Escherichia coli, complexed with ampicillin  
Authors : Kishida, H.; Unzai, S.; Roper, D.I.; Lloyd, A.; Park, S.-Y.; Tame, J.R.H.  
Deposited on : 2005-11-08  
Resolution : 1.60 Å(reported)

This is a full wwPDB validation report for a publicly released PDB entry.  
We welcome your comments at [validation@mail.wwpdb.org](mailto:validation@mail.wwpdb.org)  
A user guide is available at <http://wwpdb.org/ValidationPDFNotes.html>

---

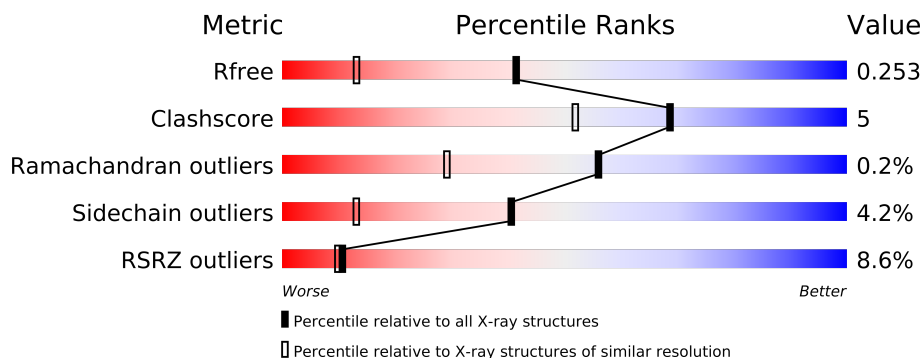
The following versions of software and data (see [references](#)) were used in the production of this report:

MolProbity : 4.02b-467  
Mogul : 1.15 2013  
Xtriage (Phenix) : dev-1323  
EDS : stable22639  
Percentile statistics : 21963  
Refmac : 5.8.0049  
CCP4 : 6.3.0 (Settle)  
Ideal geometry (proteins) : Engh & Huber (2001)  
Ideal geometry (DNA, RNA) : Parkinson et. al. (1996)  
Validation Pipeline (wwPDB-VP) : stable22683

# 1 Overall quality at a glance

The reported resolution of this entry is 1.60 Å.

Percentile scores (ranging between 0-100) for global validation metrics of the entry are shown in the following graphic. The table shows the number of entries on which the scores are based.



Metric	Whole archive (#Entries)	Similar resolution (#Entries, resolution range(Å))
$R_{free}$	66092	1872 (1.60-1.60)
Clashscore	79885	2199 (1.60-1.60)
Ramachandran outliers	78287	2126 (1.60-1.60)
Sidechain outliers	78261	2125 (1.60-1.60)
RSRZ outliers	66119	1872 (1.60-1.60)

The table below summarises the geometric issues observed across the polymeric chains and their fit to the electron density. The red, orange, yellow and green segments on the lower bar indicate the fraction of residues that contain outliers for  $\geq 3$ , 2, 1 and 0 types of geometric quality criteria. The upper red bar (where present) indicates the fraction of residues that have poor fit to the electron density.

Mol	Chain	Length	Quality of chain
1	A	458	

The following table lists non-polymeric compounds that are outliers for geometric or electron-density-fit criteria:

Mol	Type	Chain	Res	Geometry	Electron density
3	GOL	A	601	-	X

## 2 Entry composition i

There are 4 unique types of molecules in this entry. The entry contains 3731 atoms, of which 0 are hydrogen and 0 are deuterium.

In the tables below, the ZeroOcc column contains the number of atoms modelled with zero occupancy, the AltConf column contains the number of residues with at least one atom in alternate conformation and the Trace column contains the number of residues modelled with at most 2 atoms.

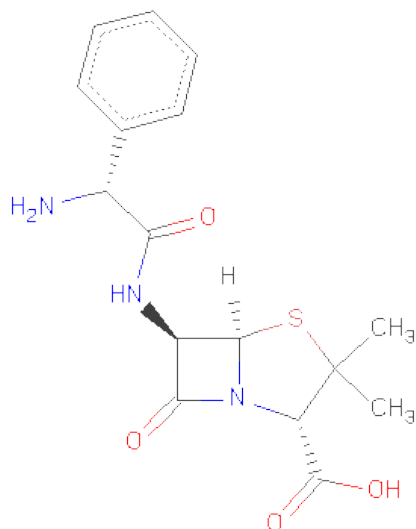
- Molecule 1 is a protein called Penicillin-binding protein 4.

Mol	Chain	Residues	Atoms					ZeroOcc	AltConf	Trace
			Total	C	N	O	S			
1	A	450	3433	2167	608	641	17	0	2	0

There are 2 discrepancies between the modelled and reference sequences:

Chain	Residue	Modelled	Actual	Comment	Reference
A	20	MET	-	INITIATING METHIONINE	UNP P24228
A	261	TYR	ASP	SEE REMARK 999	UNP P24228

- Molecule 2 is (2S,5R,6R)-6-{[(2R)-2-AMINO-2-PHENYLETHANOYL]AMINO}-3,3-DIMETHYL-7-OXO-4-THIA-1-AZABICYCLO[3.2.0]HEPTANE-2-CARBOXYLICACID (three-letter code: AIC) (formula: C<sub>16</sub>H<sub>19</sub>N<sub>3</sub>O<sub>4</sub>S).



Mol	Chain	Residues	Atoms					ZeroOcc	AltConf
			Total	C	N	O	S		
2	A	1	24	16	3	4	1	0	0

- Molecule 3 is GLYCEROL (three-letter code: GOL) (formula:  $C_3H_8O_3$ ).



Mol	Chain	Residues	Atoms			ZeroOcc	AltConf
3	A	1	Total	C	O	0	0
			6	3	3		

- Molecule 4 is water.

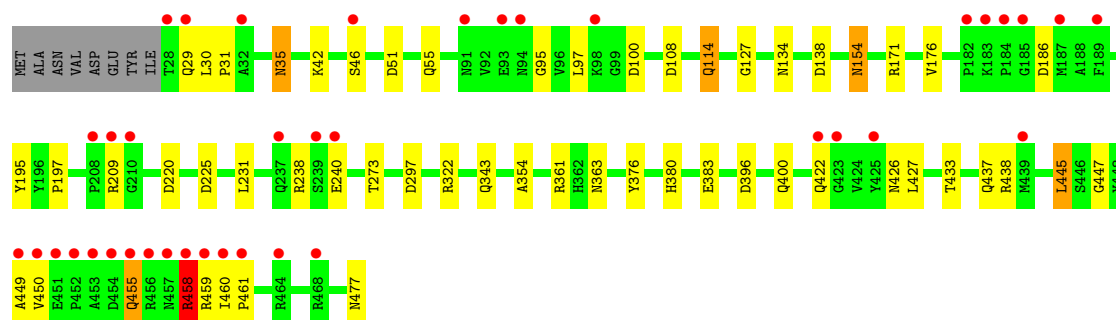
Mol	Chain	Residues	Atoms		ZeroOcc	AltConf
4	A	268	Total	O	0	0
			268	268		

### 3 Residue-property plots

These plots are drawn for all protein, RNA and DNA chains in the entry. The first graphic for a chain summarises the proportions of errors displayed in the second graphic. The second graphic shows the sequence view annotated by issues in geometry and electron density. Residues are color-coded according to the number of geometric quality criteria for which they contain at least one outlier: green = 0, yellow = 1, orange = 2 and red = 3 or more. A red dot above a residue indicates a poor fit to the electron density ( $\text{RSRZ} > 2$ ). Stretches of 2 or more consecutive residues without any outlier are shown as a green connector. Residues present in the sample, but not in the model, are shown in grey.

- Molecule 1: Penicillin-binding protein 4

Chain A: 



## 4 Data and refinement statistics

Property	Value	Source
Space group	P 41 21 2	Depositor
Cell constants a, b, c, $\alpha$ , $\beta$ , $\gamma$	95.70Å 95.70Å 115.95Å 90.00° 90.00° 90.00°	Depositor
Resolution (Å)	20.00 – 1.60 33.56 – 1.60	Depositor EDS
% Data completeness (in resolution range)	100.0 (20.00-1.60) 95.3 (33.56-1.60)	Depositor EDS
$R_{merge}$	0.06	Depositor
$R_{sym}$	(Not available)	Depositor
$\langle I/\sigma(I) \rangle$ <sup>1</sup>	1.90 (at 1.60Å)	Xtriage
Refinement program	REFMAC 5.2.0003	Depositor
R, $R_{free}$	0.216 , 0.250 0.221 , 0.253	Depositor DCC
$R_{free}$ test set	3449 reflections (5.34%)	DCC
Wilson B-factor (Å <sup>2</sup> )	24.9	Xtriage
Anisotropy	0.012	Xtriage
Bulk solvent $k_{sol}$ (e/Å <sup>3</sup> ), $B_{sol}$ (Å <sup>2</sup> )	0.41 , 48.8	EDS
Estimated twinning fraction	No twinning to report.	Xtriage
L-test for twinning	$\langle  L  \rangle = 0.48$ , $\langle L^2 \rangle = 0.31$	Xtriage
Outliers	0 of 68049 reflections	Xtriage
$F_o, F_c$ correlation	0.95	EDS
Total number of atoms	3731	wwPDB-VP
Average B, all atoms (Å <sup>2</sup> )	34.0	wwPDB-VP

Xtriage's analysis on translational NCS is as follows: *The largest off-origin peak in the Patterson function is 3.84% of the height of the origin peak. No significant pseudotranslation is detected.*

<sup>1</sup>Intensities estimated from amplitudes.

## 5 Model quality

### 5.1 Standard geometry

Bond lengths and bond angles in the following residue types are not validated in this section: GOL, AIC

The Z score for a bond length (or angle) is the number of standard deviations the observed value is removed from the expected value. A bond length (or angle) with  $|Z| > 5$  is considered an outlier worth inspection. RMSZ is the root-mean-square of all Z scores of the bond lengths (or angles).

Mol	Chain	Bond lengths		Bond angles	
		RMSZ	$\# Z  > 5$	RMSZ	$\# Z  > 5$
1	A	0.64	0/3499	0.82	11/4752 (0.2%)

There are no bond length outliers.

All (11) bond angle outliers are listed below:

Mol	Chain	Res	Type	Atoms	Z	Observed(°)	Ideal(°)
1	A	220	ASP	CB-CG-OD2	7.54	125.08	118.30
1	A	100	ASP	CB-CG-OD2	7.40	124.96	118.30
1	A	396	ASP	CB-CG-OD1	7.26	124.83	118.30
1	A	51	ASP	CB-CG-OD2	6.47	124.12	118.30
1	A	138	ASP	CB-CG-OD2	6.35	124.02	118.30
1	A	108	ASP	CB-CG-OD2	6.17	123.85	118.30
1	A	297	ASP	CB-CG-OD2	6.09	123.78	118.30
1	A	186	ASP	CB-CG-OD2	5.84	123.55	118.30
1	A	427	LEU	CA-CB-CG	5.60	128.18	115.30
1	A	171	ARG	NE-CZ-NH1	5.20	122.90	120.30
1	A	225	ASP	CB-CG-OD2	5.06	122.85	118.30

There are no chirality outliers.

There are no planarity outliers.

### 5.2 Close contacts

In the following table, the Non-H and H(model) columns list the number of non-hydrogen atoms and hydrogen atoms in the chain respectively. The H(added) column lists the number of hydrogens added by MolProbity. The Clashes column lists the number of clashes within the asymmetric unit, and the number in parentheses is this value normalized per 1000 atoms of the molecule in the chain. The Symm-Clashes column gives symmetry related clashes, in the same way as for the Clashes column.

Mol	Chain	Non-H	H(model)	H(added)	Clashes	Symm-Clashes
1	A	3433	0	3429	33	0
2	A	24	0	18	0	0
3	A	6	0	8	0	0
4	A	268	0	0	4	0
All	All	3731	0	3455	33	0

Clashscore is defined as the number of clashes calculated for the entry per 1000 atoms (including hydrogens) of the entry. The overall clashscore for this entry is 5.

All (33) close contacts within the same asymmetric unit are listed below.

Atom-1	Atom-2	Distance(Å)	Clash(Å)
1:A:361:ARG:HD3	4:A:1055:HOH:O	1.34	1.27
1:A:114:GLN:HG3	4:A:1256:HOH:O	1.71	0.89
1:A:30:LEU:HB3	1:A:31:PRO:HD2	1.59	0.85
1:A:460:ILE:HB	1:A:461:PRO:HD3	1.72	0.71
1:A:42:LYS:HD2	1:A:437:GLN:HE21	1.57	0.69
1:A:354:ALA:H	1:A:363:ASN:ND2	1.92	0.68
1:A:458:ARG:HG2	1:A:458:ARG:O	1.94	0.66
1:A:238:ARG:HD3	1:A:240:GLU:O	2.00	0.61
1:A:134:ASN:HD22	1:A:273:THR:H	1.50	0.59
1:A:322:ARG:HH12	1:A:343:GLN:HE22	1.51	0.59
1:A:433:THR:HG21	1:A:477:ASN:O	2.05	0.57
1:A:154:ASN:H	1:A:154:ASN:ND2	2.06	0.54
1:A:438:ARG:HD2	4:A:1147:HOH:O	2.07	0.54
1:A:447:GLY:C	1:A:449:ALA:H	2.12	0.53
1:A:154:ASN:H	1:A:154:ASN:HD22	1.57	0.51
1:A:42:LYS:HD2	1:A:437:GLN:NE2	2.24	0.51
1:A:30:LEU:HB3	1:A:31:PRO:CD	2.35	0.51
1:A:42:LYS:CD	1:A:437:GLN:HE21	2.23	0.49
1:A:30:LEU:CB	1:A:31:PRO:HD2	2.38	0.48
1:A:450:VAL:HG23	1:A:455:GLN:HA	1.93	0.48
1:A:195:TYR:O	1:A:197:PRO:HD3	2.13	0.47
1:A:380:HIS:HE1	4:A:1163:HOH:O	1.97	0.47
1:A:35:ASN:C	1:A:35:ASN:ND2	2.68	0.47
1:A:35:ASN:C	1:A:35:ASN:HD22	2.18	0.47
1:A:95:GLY:HA2	1:A:127:GLY:O	2.16	0.46
1:A:354:ALA:H	1:A:363:ASN:HD21	1.64	0.46
1:A:447:GLY:C	1:A:449:ALA:N	2.70	0.44
1:A:450:VAL:CG2	1:A:455:GLN:HA	2.47	0.43
1:A:400:GLN:HB2	1:A:400:GLN:HE21	1.62	0.43
1:A:42:LYS:CG	1:A:437:GLN:HE21	2.32	0.43
1:A:380:HIS:HD2	1:A:383:GLU:OE2	2.03	0.41
1:A:426:ASN:HD22	1:A:445:LEU:H	1.69	0.41

*Continued on next page...*



*Continued from previous page...*

Atom-1	Atom-2	Distance(Å)	Clash(Å)
1:A:376:TYR:CE2	1:A:380:HIS:CE1	3.09	0.41

There are no symmetry-related clashes.

## 5.3 Torsion angles

### 5.3.1 Protein backbone ⓘ

In the following table, the Percentiles column shows the percent Ramachandran outliers of the chain as a percentile score with respect to all X-ray entries followed by that with respect to entries of similar resolution. The Analysed column shows the number of residues for which the backbone conformation was analysed, and the total number of residues.

Mol	Chain	Analysed	Favoured	Allowed	Outliers	Percentiles
1	A	448/458 (98%)	432 (96%)	15 (3%)	1 (0%)	56 29

All (1) Ramachandran outliers are listed below:

Mol	Chain	Res	Type
1	A	458	ARG

### 5.3.2 Protein sidechains ⓘ

In the following table, the Percentiles column shows the percent sidechain outliers of the chain as a percentile score with respect to all X-ray entries followed by that with respect to entries of similar resolution. The Analysed column shows the number of residues for which the sidechain conformation was analysed, and the total number of residues.

Mol	Chain	Analysed	Rotameric	Outliers	Percentiles
1	A	361/370 (98%)	346 (96%)	15 (4%)	40 13

All (15) residues with a non-rotameric sidechain are listed below:

Mol	Chain	Res	Type
1	A	29	GLN
1	A	35	ASN
1	A	46	SER
1	A	55	GLN
1	A	97	LEU
1	A	114	GLN

*Continued on next page...*

*Continued from previous page...*

Mol	Chain	Res	Type
1	A	154	ASN
1	A	176	VAL
1	A	209	ARG
1	A	231	LEU
1	A	422	GLN
1	A	445	LEU
1	A	455	GLN
1	A	458	ARG
1	A	459	ARG

Some sidechains can be flipped to improve hydrogen bonding and reduce clashes. All (16) such sidechains are listed below:

Mol	Chain	Res	Type
1	A	35	ASN
1	A	41	GLN
1	A	53	HIS
1	A	114	GLN
1	A	130	GLN
1	A	134	ASN
1	A	154	ASN
1	A	249	GLN
1	A	343	GLN
1	A	363	ASN
1	A	380	HIS
1	A	382	ASN
1	A	385	ASN
1	A	400	GLN
1	A	426	ASN
1	A	437	GLN

### 5.3.3 RNA ⓘ

There are no RNA chains in this entry.

## 5.4 Non-standard residues in protein, DNA, RNA chains ⓘ

There are no non-standard protein/DNA/RNA residues in this entry.

## 5.5 Carbohydrates ⓘ

There are no carbohydrates in this entry.

## 5.6 Ligand geometry ⓘ

2 ligands are modelled in this entry.

In the following table, the Counts columns list the number of bonds (or angles) for which Mogul statistics could be retrieved, the number of bonds (or angles) that are observed in the model and the number of bonds (or angles) that are defined in the chemical component dictionary. The Link column lists molecule types, if any, to which the group is linked. The Z score for a bond length (or angle) is the number of standard deviations the observed value is removed from the expected value. A bond length (or angle) with  $|Z| > 2$  is considered an outlier worth inspection. RMSZ is the root-mean-square of all Z scores of the bond lengths (or angles).

Mol	Type	Chain	Res	Link	Bond lengths			Bond angles		
					Counts	RMSZ	$\# Z  > 2$	Counts	RMSZ	$\# Z  > 2$
2	AIC	A	501	1	26,26,26	14.06	2 (7%)	40,40,40	7.77	14 (35%)
3	GOL	A	601	-	5,5,5	0.33	0	5,5,5	1.01	0

In the following table, the Chirals column lists the number of chiral outliers, the number of chiral centers analysed, the number of these observed in the model and the number defined in the chemical component dictionary. Similar counts are reported in the Torsion and Rings columns. '-' means no outliers of that kind were identified.

Mol	Type	Chain	Res	Link	Chirals	Torsions	Rings
2	AIC	A	501	1	-	0/16/47/47	0/1/3/3
3	GOL	A	601	-	-	0/4/4/4	0/0/0/0

All (2) bond length outliers are listed below:

Mol	Chain	Res	Type	Atoms	Z	Observed(Å)	Ideal(Å)
2	A	501	AIC	C15-N3	71.57	2.98	1.37
2	A	501	AIC	C6-S1	-2.66	1.80	1.85

All (14) bond angle outliers are listed below:

Mol	Chain	Res	Type	Atoms	Z	Observed(°)	Ideal(°)
2	A	501	AIC	C13-N3-C15	-26.94	58.18	93.93
2	A	501	AIC	C14-C15-N3	-24.04	59.21	91.85
2	A	501	AIC	C14-C13-N3	21.84	115.78	87.98
2	A	501	AIC	O4-C15-N3	-16.26	107.98	131.66
2	A	501	AIC	C13-C14-C15	14.73	110.14	85.20

*Continued on next page...*

*Continued from previous page...*

Mol	Chain	Res	Type	Atoms	Z	Observed(°)	Ideal(°)
2	A	501	AIC	C13-N3-C12	-5.73	110.16	117.29
2	A	501	AIC	O4-C15-C14	-5.15	122.11	136.35
2	A	501	AIC	C13-C14-N1	-4.05	109.35	118.24
2	A	501	AIC	C12-N3-C15	3.82	137.08	126.26
2	A	501	AIC	C14-C13-S1	-3.57	113.75	119.36
2	A	501	AIC	C12-C6-S1	-2.77	99.31	104.17
2	A	501	AIC	C6-C12-C2	-2.43	109.24	112.96
2	A	501	AIC	C6-C12-N3	2.38	110.01	106.43
2	A	501	AIC	C2-C12-N3	-2.21	107.97	112.09

There are no chirality outliers.

There are no torsion outliers.

There are no ring outliers.

## 5.7 Other polymers ⓘ

There are no such residues in this entry.

## 5.8 Polymer linkage issues

There are no chain breaks in this entry.

## 6 Fit of model and data ⓘ

### 6.1 Protein, DNA and RNA chains ⓘ

In the following table, the column labelled ‘#RSRZ> 2’ contains the number (and percentage) of RSRZ outliers, followed by percent RSRZ outliers for the chain as percentile scores relative to all X-ray entries and entries of similar resolution. The OWAB column contains the minimum, median, 95<sup>th</sup> percentile and maximum values of the occupancy-weighted average B-factor per residue. The column labelled ‘Q< 0.9’ lists the number of (and percentage) of residues with an average occupancy less than 0.9.

Mol	Chain	Analysed	<RSRZ>	#RSRZ>2	OWAB(Å <sup>2</sup> )	Q<0.9
1	A	450/458 (98%)	0.45	39 (8%) 10 9	22, 30, 56, 83	1 (0%)

All (39) RSRZ outliers are listed below:

Mol	Chain	Res	Type	RSRZ
1	A	210	GLY	10.4
1	A	459	ARG	8.6
1	A	456	ARG	8.3
1	A	452	PRO	7.1
1	A	32	ALA	7.0
1	A	457	ASN	6.9
1	A	455	GLN	6.7
1	A	453	ALA	6.7
1	A	460	ILE	6.7
1	A	450	VAL	6.1
1	A	458	ARG	5.2
1	A	184	PRO	4.5
1	A	454	ASP	4.5
1	A	209	ARG	4.2
1	A	451	GLU	4.0
1	A	29	GLN	3.8
1	A	183	LYS	3.6
1	A	464	ARG	3.5
1	A	422	GLN	3.4
1	A	189	PHE	3.2
1	A	461	PRO	3.0
1	A	94	ASN	2.9
1	A	449	ALA	2.9
1	A	182	PRO	2.7
1	A	46	SER	2.7
1	A	240	GLU	2.7
1	A	91	ASN	2.6

*Continued on next page...*

*Continued from previous page...*

Mol	Chain	Res	Type	RSRZ
1	A	185	GLY	2.5
1	A	28	THR	2.5
1	A	208	PRO	2.5
1	A	187	MET	2.5
1	A	93	GLU	2.4
1	A	423	GLY	2.2
1	A	425	TYR	2.1
1	A	239	SER	2.1
1	A	468	ARG	2.1
1	A	439[B]	MET	2.0
1	A	98	LYS	2.0
1	A	237	GLN	2.0

## 6.2 Non-standard residues in protein, DNA, RNA chains ⓘ

There are no non-standard protein/DNA/RNA residues in this entry.

## 6.3 Carbohydrates ⓘ

There are no carbohydrates in this entry.

## 6.4 Ligands ⓘ

In the following table, the Atoms column lists the number of modelled atoms in the group and the number defined in the chemical component dictionary. LLDF column lists the quality of electron density of the group with respect to its neighbouring residues in protein, DNA or RNA chains. The B-factors column lists the minimum, median, 95<sup>th</sup> percentile and maximum values of B factors of atoms in the group. The column labelled 'Q< 0.9' lists the number of atoms with occupancy less than 0.9.

Mol	Type	Chain	Res	Atoms	RSR	LLDF	B-factors(Å <sup>2</sup> )	Q<0.9
3	GOL	A	601	6/6	0.18	3.98	37,47,47,49	0
2	AIC	A	501	24/24	0.08	-0.75	22,27,33,34	0

## 6.5 Other polymers ⓘ

There are no such residues in this entry.