



Full wwPDB X-ray Structure Validation Report

Feb 26, 2014 – 10:48 PM GMT

PDB ID : 2EXL
Title : GRP94 N-terminal Domain bound to geldanamycin
Authors : Reardon, P.N.; Immormino, R.M.; Gewirth, D.T.
Deposited on : 2005-11-08
Resolution : 2.35 Å(reported)

This is a full wwPDB validation report for a publicly released PDB entry.
We welcome your comments at validation@mail.wwpdb.org
A user guide is available at <http://wwpdb.org/ValidationPDFNotes.html>

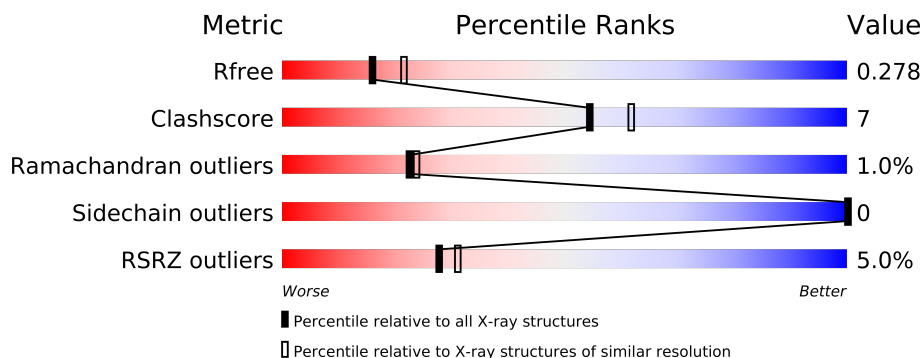
The following versions of software and data (see [references](#)) were used in the production of this report:

MolProbity : 4.02b-467
Mogul : 1.15 2013
Xtriage (Phenix) : dev-1323
EDS : stable22639
Percentile statistics : 21963
Refmac : 5.8.0049
CCP4 : 6.3.0 (Settle)
Ideal geometry (proteins) : Engh & Huber (2001)
Ideal geometry (DNA, RNA) : Parkinson et. al. (1996)
Validation Pipeline (wwPDB-VP) : stable22683

1 Overall quality at a glance

The reported resolution of this entry is 2.35 Å.

Percentile scores (ranging between 0-100) for global validation metrics of the entry are shown in the following graphic. The table shows the number of entries on which the scores are based.



Metric	Whole archive (#Entries)	Similar resolution (#Entries, resolution range(Å))
R_{free}	66092	3327 (2.40-2.32)
Clashscore	79885	1064 (2.38-2.34)
Ramachandran outliers	78287	1048 (2.38-2.34)
Sidechain outliers	78261	1049 (2.38-2.34)
RSRZ outliers	66119	3330 (2.40-2.32)

The table below summarises the geometric issues observed across the polymeric chains and their fit to the electron density. The red, orange, yellow and green segments on the lower bar indicate the fraction of residues that contain outliers for ≥ 3 , 2, 1 and 0 types of geometric quality criteria. The upper red bar (where present) indicates the fraction of residues that have poor fit to the electron density.

Mol	Chain	Length	Quality of chain
1	A	236	
1	B	236	

The following table lists non-polymeric compounds that are outliers for geometric or electron-density-fit criteria:

Mol	Type	Chain	Res	Geometry	Electron density
3	PG4	A	501	-	X
3	PG4	A	502	-	X
3	PG4	B	406	-	X
3	PG4	B	508	-	X

2 Entry composition

There are 5 unique types of molecules in this entry. The entry contains 3679 atoms, of which 0 are hydrogen and 0 are deuterium.

In the tables below, the ZeroOcc column contains the number of atoms modelled with zero occupancy, the AltConf column contains the number of residues with at least one atom in alternate conformation and the Trace column contains the number of residues modelled with at most 2 atoms.

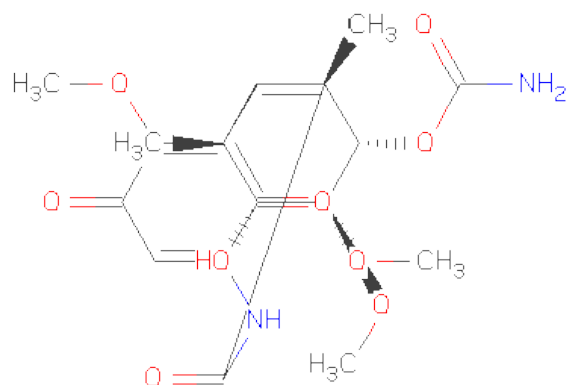
- Molecule 1 is a protein called Endoplasmin.

Mol	Chain	Residues	Atoms					ZeroOcc	AltConf	Trace
1	A	206	Total	C	N	O	S	0	0	0
			1635	1038	271	321	5			
1	B	204	Total	C	N	O	S	0	0	0
			1614	1024	268	317	5			

There are 16 discrepancies between the modelled and reference sequences:

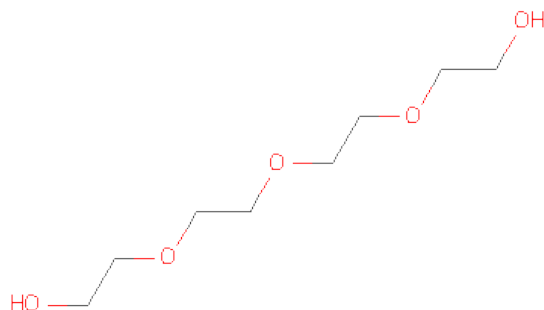
Chain	Residue	Modelled	Actual	Comment	Reference
A	65	GLY	-	CLONING ARTIFACT	UNP P41148
A	66	SER	-	CLONING ARTIFACT	UNP P41148
A	67	HIS	-	CLONING ARTIFACT	UNP P41148
A	68	MET	-	CLONING ARTIFACT	UNP P41148
A	324	GLY	-	SEE REMARK 999	UNP P41148
A	325	GLY	-	SEE REMARK 999	UNP P41148
A	326	GLY	-	SEE REMARK 999	UNP P41148
A	327	GLY	-	SEE REMARK 999	UNP P41148
B	65	GLY	-	CLONING ARTIFACT	UNP P41148
B	66	SER	-	CLONING ARTIFACT	UNP P41148
B	67	HIS	-	CLONING ARTIFACT	UNP P41148
B	68	MET	-	CLONING ARTIFACT	UNP P41148
B	324	GLY	-	SEE REMARK 999	UNP P41148
B	325	GLY	-	SEE REMARK 999	UNP P41148
B	326	GLY	-	SEE REMARK 999	UNP P41148
B	327	GLY	-	SEE REMARK 999	UNP P41148

- Molecule 2 is GELDANAMYCIN (three-letter code: GDM) (formula: C₂₉H₄₀N₂O₉).



Mol	Chain	Residues	Atoms				ZeroOcc	AltConf
2	A	1	Total	C	N	O	0	0
			40	29	2	9		
2	B	1	Total	C	N	O	0	0
			40	29	2	9		

- Molecule 3 is TETRAETHYLENE GLYCOL (three-letter code: PG4) (formula: C₈H₁₈O₅).



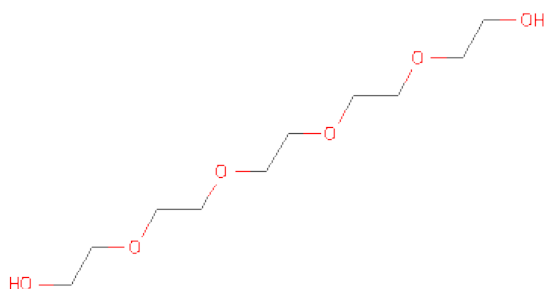
Mol	Chain	Residues	Atoms			ZeroOcc	AltConf
3	A	1	Total	C	O	0	0
			13	8	5		
3	A	1	Total	C	O	0	0
			13	8	5		

Continued on next page...

Continued from previous page...

Mol	Chain	Residues	Atoms			ZeroOcc	AltConf
3	B	1	Total	C	O	0	0
			13	8	5		
3	B	1	Total	C	O	0	0
			13	8	5		

- Molecule 4 is PENTAETHYLENE GLYCOL (three-letter code: 1PE) (formula: C₁₀H₂₂O₆).



Mol	Chain	Residues	Atoms			ZeroOcc	AltConf
4	A	1	Total	C	O	0	0
			16	10	6		

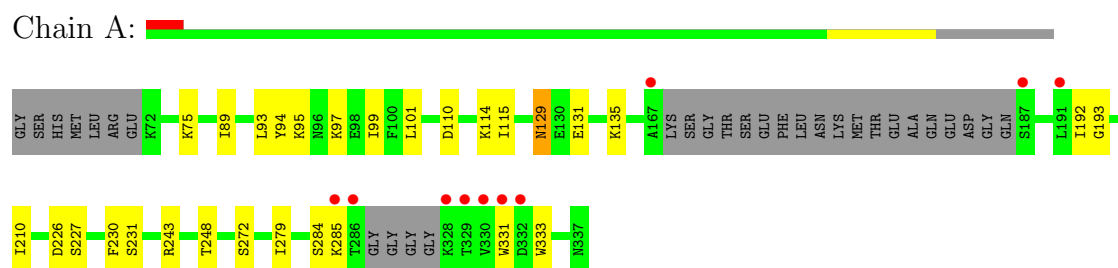
- Molecule 5 is water.

Mol	Chain	Residues	Atoms		ZeroOcc	AltConf
5	A	134	Total	O	0	0
			134	134		
5	B	148	Total	O	0	0
			148	148		

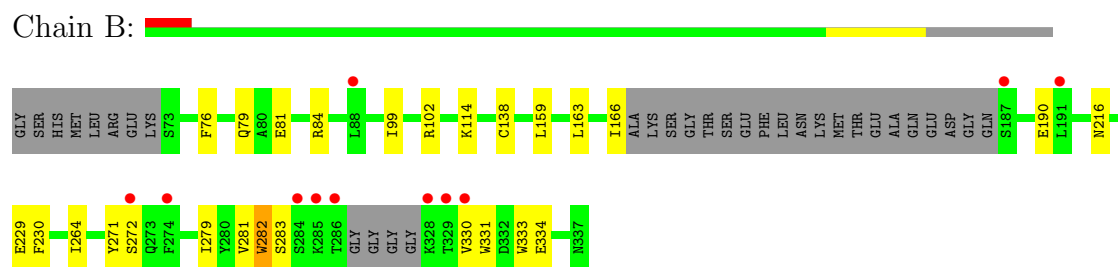
3 Residue-property plots

These plots are drawn for all protein, RNA and DNA chains in the entry. The first graphic for a chain summarises the proportions of errors displayed in the second graphic. The second graphic shows the sequence view annotated by issues in geometry and electron density. Residues are color-coded according to the number of geometric quality criteria for which they contain at least one outlier: green = 0, yellow = 1, orange = 2 and red = 3 or more. A red dot above a residue indicates a poor fit to the electron density ($RSRZ > 2$). Stretches of 2 or more consecutive residues without any outlier are shown as a green connector. Residues present in the sample, but not in the model, are shown in grey.

• Molecule 1: Endoplasmin



• Molecule 1: Endoplasmin



4 Data and refinement statistics

Property	Value	Source
Space group	P 21 21 21	Depositor
Cell constants a, b, c, α , β , γ	65.82Å 84.36Å 95.63Å 90.00° 90.00° 90.00°	Depositor
Resolution (Å)	45.61 – 2.35 45.61 – 2.33	Depositor EDS
% Data completeness (in resolution range)	98.7 (45.61-2.35) 97.2 (45.61-2.33)	Depositor EDS
R_{merge}	(Not available)	Depositor
R_{sym}	0.10	Depositor
$\langle I/\sigma(I) \rangle$ ¹	2.56 (at 2.34Å)	Xtriage
Refinement program	CNS 1.1	Depositor
R, R_{free}	0.221 , 0.276 0.224 , 0.278	Depositor DCC
R_{free} test set	2252 reflections (10.00%)	DCC
Wilson B-factor (Å ²)	23.3	Xtriage
Anisotropy	0.272	Xtriage
Bulk solvent k_{sol} (e/Å ³), B_{sol} (Å ²)	0.34 , 44.7	EDS
Estimated twinning fraction	No twinning to report.	Xtriage
L-test for twinning	$\langle L \rangle = 0.44$, $\langle L^2 \rangle = 0.27$	Xtriage
Outliers	0 of 22646 reflections	Xtriage
F_o, F_c correlation	0.93	EDS
Total number of atoms	3679	wwPDB-VP
Average B, all atoms (Å ²)	31.0	wwPDB-VP

Xtriage's analysis on translational NCS is as follows: *The analyses of the Patterson function reveals a significant off-origin peak that is 37.76 % of the origin peak, indicating pseudo translational symmetry. The chance of finding a peak of this or larger height randomly in a structure without pseudo translational symmetry is equal to 4.0858e-04. The detected translational NCS is most likely also responsible for the elevated intensity ratio.*

¹Intensities estimated from amplitudes.

5 Model quality

5.1 Standard geometry

Bond lengths and bond angles in the following residue types are not validated in this section: PG4, GDM, 1PE

The Z score for a bond length (or angle) is the number of standard deviations the observed value is removed from the expected value. A bond length (or angle) with $|Z| > 5$ is considered an outlier worth inspection. RMSZ is the root-mean-square of all Z scores of the bond lengths (or angles).

Mol	Chain	Bond lengths		Bond angles	
		RMSZ	$\# Z > 5$	RMSZ	$\# Z > 5$
1	A	0.35	0/1658	0.60	0/2236
1	B	0.36	0/1637	0.61	0/2209
All	All	0.35	0/3295	0.61	0/4445

There are no bond length outliers.

There are no bond angle outliers.

There are no chirality outliers.

There are no planarity outliers.

5.2 Close contacts

In the following table, the Non-H and H(model) columns list the number of non-hydrogen atoms and hydrogen atoms in the chain respectively. The H(added) column lists the number of hydrogens added by MolProbity. The Clashes column lists the number of clashes within the asymmetric unit, and the number in parentheses is this value normalized per 1000 atoms of the molecule in the chain. The Symm-Clashes column gives symmetry related clashes, in the same way as for the Clashes column.

Mol	Chain	Non-H	H(model)	H(added)	Clashes	Symm-Clashes
1	A	1635	0	1639	20	0
1	B	1614	0	1608	22	0
2	A	40	0	39	1	0
2	B	40	0	39	3	0
3	A	26	0	36	1	0
3	B	26	0	36	1	0
4	A	16	0	22	0	0
5	A	134	0	0	2	0
5	B	148	0	0	3	0
All	All	3679	0	3419	46	0

Clashscore is defined as the number of clashes calculated for the entry per 1000 atoms (including hydrogens) of the entry. The overall clashscore for this entry is 7.

All (46) close contacts within the same asymmetric unit are listed below.

Atom-1	Atom-2	Distance(Å)	Clash(Å)
1:B:283:SER:OG	1:B:334:GLU:HB2	2.03	0.58
1:B:159:LEU:O	1:B:163:LEU:HB2	2.03	0.57
2:A:301:GDM:C4	2:A:301:GDM:H233	2.35	0.56
1:B:99:ILE:HD11	1:B:102:ARG:HH21	1.70	0.56
2:B:302:GDM:C4	2:B:302:GDM:H233	2.35	0.56
1:A:129:ASN:OD1	1:A:131:GLU:HG2	2.06	0.55
1:B:99:ILE:HD11	1:B:102:ARG:NH2	2.21	0.55
1:A:93:LEU:HD13	1:A:99:ILE:HD11	1.88	0.55
1:B:190:GLU:HA	5:B:587:HOH:O	2.08	0.54
1:A:89:ILE:HG23	1:A:93:LEU:HD12	1.89	0.53
1:B:99:ILE:CD1	1:B:102:ARG:NH2	2.71	0.53
1:B:99:ILE:HG13	1:B:102:ARG:NH2	2.24	0.53
1:A:284:SER:HB3	1:A:331:TRP:CZ2	2.44	0.52
1:A:135:LYS:HD3	1:A:333:TRP:CZ2	2.47	0.49
1:B:272:SER:HB3	1:B:279:ILE:HG13	1.94	0.49
3:A:501:PG4:H42	5:A:507:HOH:O	2.12	0.49
1:A:135:LYS:HD3	1:A:333:TRP:CE2	2.48	0.48
1:A:129:ASN:O	1:A:243:ARG:NH2	2.44	0.48
1:B:76:PHE:HB2	1:B:230:PHE:CZ	2.49	0.48
1:A:94:TYR:CE1	1:A:95:LYS:HG3	2.49	0.48
1:B:79:GLN:HG2	1:B:81:GLU:OE2	2.15	0.47
1:B:330:VAL:HG12	1:B:331:TRP:N	2.30	0.47
1:B:281:VAL:O	1:B:283:SER:N	2.49	0.46
1:B:282:TRP:CZ2	3:B:406:PG4:H81	2.51	0.46
1:A:94:TYR:O	1:A:97:LYS:HE2	2.16	0.46
1:A:210:ILE:HB	1:A:248:THR:HB	2.00	0.44
1:B:114:LYS:HD2	2:B:302:GDM:H261	2.00	0.44
2:B:302:GDM:H232	5:B:513:HOH:O	2.16	0.44
1:A:110:ASP:O	1:A:114:LYS:HG3	2.18	0.44
1:A:272:SER:OG	1:A:279:ILE:HD12	2.18	0.44
1:A:75:LYS:HD3	1:A:231:SER:HB3	1.99	0.43
1:B:102:ARG:HB2	1:B:271:TYR:CD2	2.54	0.42
1:B:138:CYS:SG	1:B:264:ILE:HG13	2.59	0.42
1:B:282:TRP:HB2	1:B:333:TRP:CZ3	2.54	0.42
1:B:76:PHE:N	1:B:76:PHE:CD1	2.88	0.42
1:A:192:ILE:HG13	1:A:193:GLY:N	2.34	0.42
1:A:135:LYS:HB3	1:A:333:TRP:CH2	2.55	0.42
1:A:285:LYS:HD3	1:A:285:LYS:HA	1.73	0.42
5:A:620:HOH:O	1:B:84:ARG:NH2	2.53	0.41

Continued on next page...

Continued from previous page...

Atom-1	Atom-2	Distance(Å)	Clash(Å)
1:A:115:ILE:HD12	1:A:115:ILE:HA	1.88	0.41
1:B:166:ILE:CB	5:B:518:HOH:O	2.68	0.41
1:A:226:ASP:O	1:A:227:SER:CB	2.69	0.41
1:A:101:LEU:HD12	1:A:101:LEU:HA	1.84	0.40
1:B:99:ILE:CG1	1:B:102:ARG:NH2	2.84	0.40
1:B:81:GLU:OE2	1:B:81:GLU:N	2.47	0.40
1:A:230:PHE:C	1:A:230:PHE:CD1	2.95	0.40

There are no symmetry-related clashes.

5.3 Torsion angles

5.3.1 Protein backbone ⓘ

In the following table, the Percentiles column shows the percent Ramachandran outliers of the chain as a percentile score with respect to all X-ray entries followed by that with respect to entries of similar resolution. The Analysed column shows the number of residues for which the backbone conformation was analysed, and the total number of residues.

Mol	Chain	Analysed	Favoured	Allowed	Outliers	Percentiles	
1	A	200/236 (85%)	190 (95%)	9 (4%)	1 (0%)	38	45
1	B	198/236 (84%)	183 (92%)	12 (6%)	3 (2%)	15	13
All	All	398/472 (84%)	373 (94%)	21 (5%)	4 (1%)	22	24

All (4) Ramachandran outliers are listed below:

Mol	Chain	Res	Type
1	B	282	TRP
1	B	216	ASN
1	A	129	ASN
1	B	229	GLU

5.3.2 Protein sidechains ⓘ

In the following table, the Percentiles column shows the percent sidechain outliers of the chain as a percentile score with respect to all X-ray entries followed by that with respect to entries of similar resolution. The Analysed column shows the number of residues for which the sidechain conformation was analysed, and the total number of residues.

Mol	Chain	Analysed	Rotameric	Outliers	Percentiles	
1	A	183/207 (88%)	183 (100%)	0	100	100
1	B	180/207 (87%)	180 (100%)	0	100	100
All	All	363/414 (88%)	363 (100%)	0	100	100

There are no protein residues with a non-rotameric sidechain to report.

Some sidechains can be flipped to improve hydrogen bonding and reduce clashes. There are no such sidechains identified.

5.3.3 RNA ⓘ

There are no RNA chains in this entry.

5.4 Non-standard residues in protein, DNA, RNA chains ⓘ

There are no non-standard protein/DNA/RNA residues in this entry.

5.5 Carbohydrates ⓘ

There are no carbohydrates in this entry.

5.6 Ligand geometry ⓘ

7 ligands are modelled in this entry.

In the following table, the Counts columns list the number of bonds (or angles) for which Mogul statistics could be retrieved, the number of bonds (or angles) that are observed in the model and the number of bonds (or angles) that are defined in the chemical component dictionary. The Link column lists molecule types, if any, to which the group is linked. The Z score for a bond length (or angle) is the number of standard deviations the observed value is removed from the expected value. A bond length (or angle) with $|Z| > 2$ is considered an outlier worth inspection. RMSZ is the root-mean-square of all Z scores of the bond lengths (or angles).

Mol	Type	Chain	Res	Link	Bond lengths			Bond angles		
					Counts	RMSZ	# Z > 2	Counts	RMSZ	# Z > 2
2	GDM	A	301	-	41,41,41	1.54	6 (14%)	57,57,57	2.02	15 (26%)
4	1PE	A	409	-	15,15,15	0.63	0	14,14,14	0.90	0
3	PG4	A	501	-	12,12,12	0.69	0	11,11,11	0.78	0
3	PG4	A	502	-	12,12,12	0.68	0	11,11,11	0.81	0
2	GDM	B	302	-	41,41,41	1.53	7 (17%)	57,57,57	2.07	16 (28%)
3	PG4	B	406	-	12,12,12	0.74	0	11,11,11	0.69	0

Mol	Type	Chain	Res	Link	Bond lengths			Bond angles		
					Counts	RMSZ	# Z > 2	Counts	RMSZ	# Z > 2
3	PG4	B	508	-	12,12,12	0.67	0	11,11,11	0.77	0

In the following table, the Chirals column lists the number of chiral outliers, the number of chiral centers analysed, the number of these observed in the model and the number defined in the chemical component dictionary. Similar counts are reported in the Torsion and Rings columns. '-' means no outliers of that kind were identified.

Mol	Type	Chain	Res	Link	Chirals	Torsions	Rings
2	GDM	A	301	-	-	4/52/72/72	0/0/2/2
4	1PE	A	409	-	-	0/13/13/13	0/0/0/0
3	PG4	A	501	-	-	0/10/10/10	0/0/0/0
3	PG4	A	502	-	-	0/10/10/10	0/0/0/0
2	GDM	B	302	-	-	4/52/72/72	0/0/2/2
3	PG4	B	406	-	-	0/10/10/10	0/0/0/0
3	PG4	B	508	-	-	0/10/10/10	0/0/0/0

All (13) bond length outliers are listed below:

Mol	Chain	Res	Type	Atoms	Z	Observed(Å)	Ideal(Å)
2	A	301	GDM	C4-C5	5.08	1.53	1.33
2	B	302	GDM	C4-C5	5.07	1.53	1.33
2	A	301	GDM	C20-N1	-3.58	1.33	1.41
2	B	302	GDM	C20-N1	-3.52	1.33	1.41
2	A	301	GDM	C9-C8	3.01	1.39	1.33
2	B	302	GDM	C9-C8	2.93	1.39	1.33
2	B	302	GDM	C17-C18	-2.76	1.39	1.46
2	A	301	GDM	C17-C18	-2.72	1.39	1.46
2	A	301	GDM	C16-C21	-2.26	1.39	1.46
2	B	302	GDM	C16-C21	-2.21	1.39	1.46
2	A	301	GDM	C3-C2	2.10	1.39	1.34
2	B	302	GDM	C20-C21	2.06	1.55	1.47
2	B	302	GDM	C3-C2	2.04	1.39	1.34

All (31) bond angle outliers are listed below:

Mol	Chain	Res	Type	Atoms	Z	Observed(°)	Ideal(°)
2	A	301	GDM	C6-C5-C4	-5.25	113.55	125.49
2	B	302	GDM	C21-C20-N1	5.06	122.54	113.09
2	B	302	GDM	C6-C5-C4	-4.90	114.33	125.49
2	A	301	GDM	C21-C20-N1	4.86	122.16	113.09
2	B	302	GDM	O3-C24-N2	4.56	117.78	110.89
2	A	301	GDM	O3-C24-N2	4.53	117.74	110.89

Continued on next page...

Continued from previous page...

Mol	Chain	Res	Type	Atoms	Z	Observed(°)	Ideal(°)
2	B	302	GDM	C19-C20-N1	-4.49	119.61	126.69
2	A	301	GDM	C19-C20-N1	-4.48	119.62	126.69
2	B	302	GDM	C28-C14-C13	4.26	126.09	111.05
2	B	302	GDM	C3-C4-C5	-4.24	113.42	124.21
2	A	301	GDM	C3-C4-C5	-4.24	113.43	124.21
2	A	301	GDM	C28-C14-C13	4.20	125.89	111.05
2	B	302	GDM	C10-C9-C8	-4.16	122.06	128.58
2	A	301	GDM	C10-C9-C8	-4.15	122.08	128.58
2	A	301	GDM	O3-C24-O4	-3.59	119.68	123.40
2	B	302	GDM	O3-C24-O4	-3.57	119.69	123.40
2	B	302	GDM	C2-C1-N1	2.91	120.50	114.09
2	A	301	GDM	C2-C1-N1	2.77	120.19	114.09
2	B	302	GDM	C19-C20-C21	-2.71	117.66	120.55
2	B	302	GDM	C25-C8-C7	2.70	120.19	115.58
2	B	302	GDM	C14-C13-C12	-2.68	111.82	115.27
2	B	302	GDM	O1-C1-C2	-2.60	117.68	121.47
2	A	301	GDM	C25-C8-C7	2.59	120.00	115.58
2	A	301	GDM	C19-C18-C17	2.56	122.02	116.51
2	A	301	GDM	C19-C20-C21	-2.48	117.90	120.55
2	B	302	GDM	C19-C18-C17	2.46	121.80	116.51
2	B	302	GDM	C28-C14-C15	2.33	114.70	110.10
2	A	301	GDM	O1-C1-C2	-2.17	118.31	121.47
2	A	301	GDM	C14-C13-C12	-2.15	112.50	115.27
2	B	302	GDM	C7-C6-C5	-2.09	109.08	112.81
2	A	301	GDM	C28-C14-C15	2.01	114.08	110.10

There are no chirality outliers.

All (8) torsion outliers are listed below:

Mol	Chain	Res	Type	Atoms
2	A	301	GDM	C2-C1-N1-C20
2	B	302	GDM	O1-C1-N1-C20
2	B	302	GDM	C2-C1-N1-C20
2	A	301	GDM	O1-C1-N1-C20
2	B	302	GDM	C19-C20-N1-C1
2	A	301	GDM	C19-C20-N1-C1
2	B	302	GDM	C21-C20-N1-C1
2	A	301	GDM	C21-C20-N1-C1

There are no ring outliers.

5.7 Other polymers ⓘ

There are no such residues in this entry.

5.8 Polymer linkage issues

There are no chain breaks in this entry.

6 Fit of model and data ⓘ

6.1 Protein, DNA and RNA chains ⓘ

In the following table, the column labelled ‘#RSRZ> 2’ contains the number (and percentage) of RSRZ outliers, followed by percent RSRZ outliers for the chain as percentile scores relative to all X-ray entries and entries of similar resolution. The OWAB column contains the minimum, median, 95th percentile and maximum values of the occupancy-weighted average B-factor per residue. The column labelled ‘Q< 0.9’ lists the number of (and percentage) of residues with an average occupancy less than 0.9.

Mol	Chain	Analysed	<RSRZ>	#RSRZ>2	OWAB(Å ²)	Q<0.9
1	A	206/236 (87%)	0.05	10 (4%) 28 31	12, 25, 57, 80	0
1	B	204/236 (86%)	0.01	11 (5%) 25 28	11, 25, 61, 80	0
All	All	410/472 (86%)	0.03	21 (5%) 28 30	11, 25, 60, 80	0

All (21) RSRZ outliers are listed below:

Mol	Chain	Res	Type	RSRZ
1	A	328	LYS	5.7
1	A	286	THR	5.3
1	A	330	VAL	4.7
1	B	328	LYS	4.6
1	B	330	VAL	4.6
1	A	285	LYS	4.1
1	B	191	LEU	3.7
1	A	167	ALA	3.7
1	A	329	THR	3.6
1	B	285	LYS	3.2
1	B	284	SER	3.2
1	A	331	TRP	3.0
1	B	286	THR	2.9
1	B	272	SER	2.8
1	A	187	SER	2.8
1	A	191	LEU	2.4
1	B	187	SER	2.4
1	B	329	THR	2.4
1	A	332	ASP	2.3
1	B	88	LEU	2.2
1	B	274	PHE	2.0

6.2 Non-standard residues in protein, DNA, RNA chains ⓘ

There are no non-standard protein/DNA/RNA residues in this entry.

6.3 Carbohydrates ⓘ

There are no carbohydrates in this entry.

6.4 Ligands ⓘ

In the following table, the Atoms column lists the number of modelled atoms in the group and the number defined in the chemical component dictionary. LLDF column lists the quality of electron density of the group with respect to its neighbouring residues in protein, DNA or RNA chains. The B-factors column lists the minimum, median, 95th percentile and maximum values of B factors of atoms in the group. The column labelled 'Q< 0.9' lists the number of atoms with occupancy less than 0.9.

Mol	Type	Chain	Res	Atoms	RSR	LLDF	B-factors(Å ²)	Q<0.9
3	PG4	A	502	13/13	0.18	4.23	59,61,63,63	0
3	PG4	B	508	13/13	0.18	2.88	27,30,49,49	0
3	PG4	B	406	13/13	0.22	2.53	48,57,63,63	0
3	PG4	A	501	13/13	0.16	2.09	43,45,49,49	0
4	1PE	A	409	16/16	0.17	1.88	32,36,39,43	0
2	GDM	B	302	40/40	0.12	0.33	12,22,26,27	0
2	GDM	A	301	40/40	0.10	-0.29	10,20,28,30	0

6.5 Other polymers ⓘ

There are no such residues in this entry.