



Full wwPDB X-ray Structure Validation Report

Mar 1, 2014 – 12:46 AM GMT

PDB ID : 2F1B
Title : GOLGI ALPHA-MANNOSIDASE II COMPLEX WITH (2R,3R,4S,5R)-2-({[(1R)-2-hydroxy-1-phenylethyl]amino}methyl)-5-methylpyrrolidine-3,4-diol
Authors : Kuntz, D.A.; Rose, D.R.
Deposited on : 2005-11-14
Resolution : 1.45 Å(reported)

This is a full wwPDB validation report for a publicly released PDB entry.
We welcome your comments at validation@mail.wwpdb.org
A user guide is available at <http://wwpdb.org/ValidationPDFNotes.html>

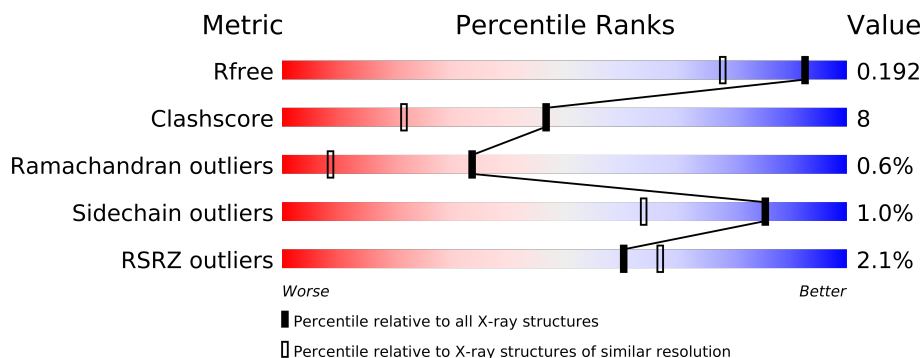
The following versions of software and data (see [references](#)) were used in the production of this report:

MolProbity : 4.02b-467
Mogul : 1.15 2013
Xtriage (Phenix) : dev-1323
EDS : stable22639
Percentile statistics : 21963
Refmac : 5.8.0049
CCP4 : 6.3.0 (Settle)
Ideal geometry (proteins) : Engh & Huber (2001)
Ideal geometry (DNA, RNA) : Parkinson et. al. (1996)
Validation Pipeline (wwPDB-VP) : stable22683

1 Overall quality at a glance


The reported resolution of this entry is 1.45 Å.

Percentile scores (ranging between 0-100) for global validation metrics of the entry are shown in the following graphic. The table shows the number of entries on which the scores are based.



Metric	Whole archive (#Entries)	Similar resolution (#Entries, resolution range(Å))
R_{free}	66092	2476 (1.50-1.42)
Clashscore	79885	2834 (1.50-1.42)
Ramachandran outliers	78287	2769 (1.50-1.42)
Sidechain outliers	78261	2767 (1.50-1.42)
RSRZ outliers	66119	2477 (1.50-1.42)

The table below summarises the geometric issues observed across the polymeric chains and their fit to the electron density. The red, orange, yellow and green segments on the lower bar indicate the fraction of residues that contain outliers for ≥ 3 , 2, 1 and 0 types of geometric quality criteria. The upper red bar (where present) indicates the fraction of residues that have poor fit to the electron density.

Mol	Chain	Length	Quality of chain
1	A	1045	

The following table lists non-polymeric compounds that are outliers for geometric or electron-density-fit criteria:

Mol	Type	Chain	Res	Geometry	Electron density
2	NAG	A	1802	-	X
4	GB3	A	1803	-	X

2 Entry composition

There are 6 unique types of molecules in this entry. The entry contains 9491 atoms, of which 0 are hydrogen and 0 are deuterium.

In the tables below, the ZeroOcc column contains the number of atoms modelled with zero occupancy, the AltConf column contains the number of residues with at least one atom in alternate conformation and the Trace column contains the number of residues modelled with at most 2 atoms.

- Molecule 1 is a protein called alpha-mannosidase II.

Mol	Chain	Residues	Atoms					ZeroOcc	AltConf	Trace
			Total	C	N	O	S			
1	A	1014	8291	5266	1447	1535	43	0	34	0

There are 12 discrepancies between the modelled and reference sequences:

Chain	Residue	Modelled	Actual	Comment	Reference
A	1	ARG	-	EXPRESSION TAG	GB 517481
A	2	SER	-	EXPRESSION TAG	GB 517481
A	3	SER	-	EXPRESSION TAG	GB 517481
A	4	HIS	-	EXPRESSION TAG	GB 517481
A	5	HIS	-	EXPRESSION TAG	GB 517481
A	6	HIS	-	EXPRESSION TAG	GB 517481
A	7	HIS	-	EXPRESSION TAG	GB 517481
A	8	HIS	-	EXPRESSION TAG	GB 517481
A	9	HIS	-	EXPRESSION TAG	GB 517481
A	10	GLY	-	EXPRESSION TAG	GB 517481
A	11	GLU	-	EXPRESSION TAG	GB 517481
A	12	PHE	-	EXPRESSION TAG	GB 517481

- Molecule 2 is SUGAR (N-ACETYL-D-GLUCOSAMINE) (three-letter code: NAG) (formula: C₈H₁₅NO₆).

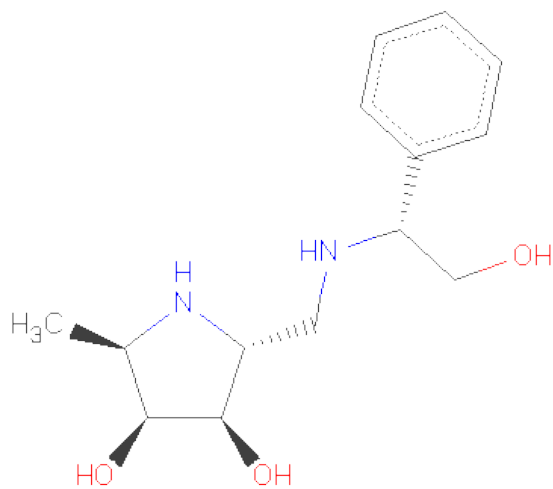


Mol	Chain	Residues	Atoms				ZeroOcc	AltConf
2	A	1	Total	C	N	O	0	0
			14	8	1	5		

- Molecule 3 is ZINC ION (three-letter code: ZN) (formula: Zn).

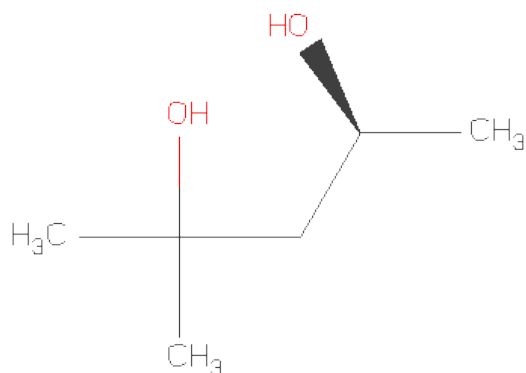
Mol	Chain	Residues	Atoms		ZeroOcc	AltConf
3	A	1	Total	Zn	0	0
			1	1		

- Molecule 4 is (2R,3R,4S,5R)-2-({[(1R)-2-HYDROXY-1-PHENYLETHYL]AMINO}METHYL)-5-METHYLPYRROLIDINE-3,4-DIOL (three-letter code: GB3) (formula: C₁₄H₂₂N₂O₃).



Mol	Chain	Residues	Atoms				ZeroOcc	AltConf
4	A	1	Total	C	N	O	0	0
			19	14	2	3		

- Molecule 5 is (4S)-2-METHYL-2,4-PENTANEDIOL (three-letter code: MPD) (formula: C₆H₁₄O₂).



Mol	Chain	Residues	Atoms			ZeroOcc	AltConf
5	A	1	Total	C	O	0	0
			8	6	2		

- Molecule 6 is water.

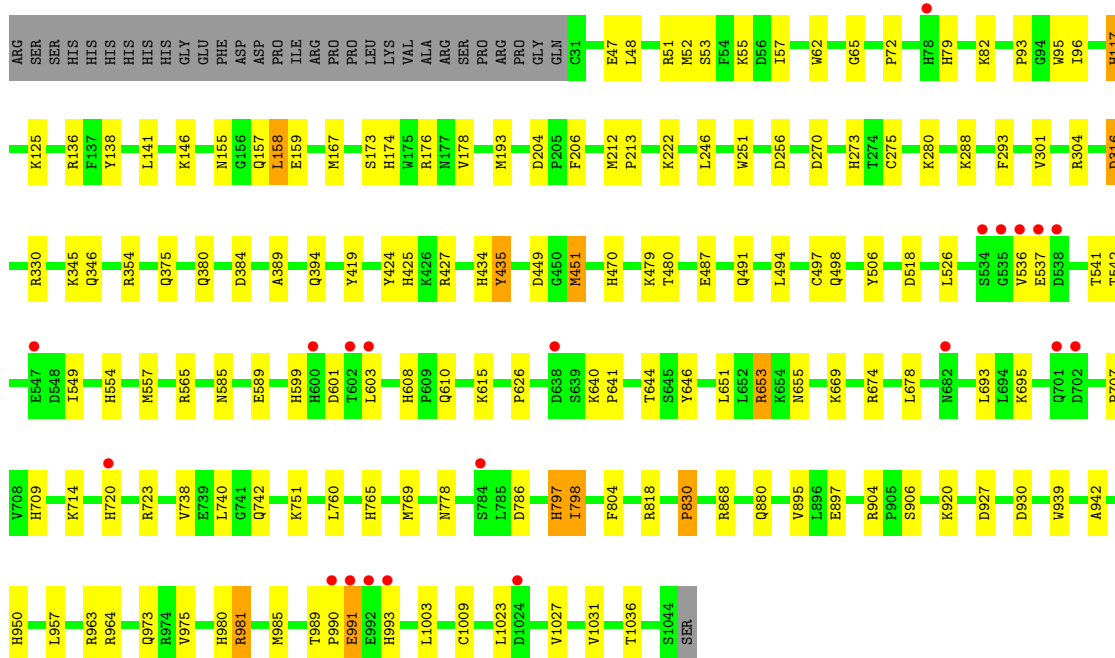
Mol	Chain	Residues	Atoms		ZeroOcc	AltConf
6	A	1158	Total	O	0	0
			1158	1158		

3 Residue-property plots

These plots are drawn for all protein, RNA and DNA chains in the entry. The first graphic for a chain summarises the proportions of errors displayed in the second graphic. The second graphic shows the sequence view annotated by issues in geometry and electron density. Residues are color-coded according to the number of geometric quality criteria for which they contain at least one outlier: green = 0, yellow = 1, orange = 2 and red = 3 or more. A red dot above a residue indicates a poor fit to the electron density ($RSRZ > 2$). Stretches of 2 or more consecutive residues without any outlier are shown as a green connector. Residues present in the sample, but not in the model, are shown in grey.

• Molecule 1: alpha-mannosidase II

Chain A: 



4 Data and refinement statistics

Property	Value	Source
Space group	P 21 21 21	Depositor
Cell constants a, b, c, α , β , γ	69.43Å 110.58Å 139.89Å 90.00° 90.00° 90.00°	Depositor
Resolution (Å)	29.56 – 1.45 29.56 – 1.45	Depositor EDS
% Data completeness (in resolution range)	91.0 (29.56-1.45) 91.2 (29.56-1.45)	Depositor EDS
R_{merge}	0.07	Depositor
R_{sym}	(Not available)	Depositor
$\langle I/\sigma(I) \rangle$ ¹	2.85 (at 1.45Å)	Xtriage
Refinement program	CNS 1.1	Depositor
R, R_{free}	0.173 , 0.194 0.172 , 0.192	Depositor DCC
R_{free} test set	3932 reflections (2.32%)	DCC
Wilson B-factor (Å ²)	13.1	Xtriage
Anisotropy	0.253	Xtriage
Bulk solvent k_{sol} (e/Å ³), B_{sol} (Å ²)	0.36 , 44.2	EDS
Estimated twinning fraction	No twinning to report.	Xtriage
L-test for twinning	$\langle L \rangle = 0.47$, $\langle L^2 \rangle = 0.29$	Xtriage
Outliers	0 of 190465 reflections	Xtriage
F_o, F_c correlation	0.96	EDS
Total number of atoms	9491	wwPDB-VP
Average B, all atoms (Å ²)	17.0	wwPDB-VP

Xtriage's analysis on translational NCS is as follows: *The largest off-origin peak in the Patterson function is 4.39% of the height of the origin peak. No significant pseudotranslation is detected.*

¹Intensities estimated from amplitudes.

5 Model quality i

5.1 Standard geometry i

Bond lengths and bond angles in the following residue types are not validated in this section: MPD, GB3, ZN, NAG

The Z score for a bond length (or angle) is the number of standard deviations the observed value is removed from the expected value. A bond length (or angle) with $|Z| > 5$ is considered an outlier worth inspection. RMSZ is the root-mean-square of all Z scores of the bond lengths (or angles).

Mol	Chain	Bond lengths		Bond angles	
		RMSZ	$\# Z > 5$	RMSZ	$\# Z > 5$
1	A	1.06	5/8687 (0.1%)	0.93	14/11790 (0.1%)

Chiral center outliers are detected by calculating the chiral volume of a chiral center and verifying if the center is modelled as a planar moiety or with the opposite hand. A planarity outlier is detected by checking planarity of atoms in a peptide group, atoms in a mainchain group or atoms of a sidechain that are expected to be planar.

Mol	Chain	#Chirality outliers	#Planarity outliers
1	A	0	5

All (5) bond length outliers are listed below:

Mol	Chain	Res	Type	Atoms	Z	Observed(Å)	Ideal(Å)
1	A	830	PRO	N-CD	-18.27	1.22	1.47
1	A	72	PRO	N-CD	-18.11	1.22	1.47
1	A	497	CYS	CB-SG	-6.84	1.70	1.82
1	A	804	PHE	CE1-CZ	5.04	1.47	1.37
1	A	424	TYR	CD1-CE1	5.03	1.46	1.39

All (14) bond angle outliers are listed below:

Mol	Chain	Res	Type	Atoms	Z	Observed(°)	Ideal(°)
1	A	963	ARG	NE-CZ-NH2	-6.89	116.85	120.30
1	A	868	ARG	NE-CZ-NH2	-6.78	116.91	120.30
1	A	557	MET	CG-SD-CE	6.33	110.33	100.20
1	A	565	ARG	NE-CZ-NH2	-6.25	117.18	120.30
1	A	427	ARG	NE-CZ-NH2	-5.91	117.34	120.30
1	A	818	ARG	NE-CZ-NH2	-5.73	117.44	120.30
1	A	818	ARG	NE-CZ-NH1	5.58	123.09	120.30
1	A	674	ARG	NE-CZ-NH2	-5.57	117.52	120.30

Continued on next page...

Continued from previous page...

Mol	Chain	Res	Type	Atoms	Z	Observed(°)	Ideal(°)
1	A	384	ASP	CB-CG-OD2	-5.55	113.30	118.30
1	A	963	ARG	NE-CZ-NH1	5.24	122.92	120.30
1	A	167	MET	N-CA-C	-5.14	97.12	111.00
1	A	518	ASP	N-CA-C	-5.09	97.26	111.00
1	A	330	ARG	NE-CZ-NH2	-5.08	117.76	120.30
1	A	1027	VAL	CG1-CB-CG2	-5.07	102.80	110.90

There are no chirality outliers.

All (5) planarity outliers are listed below:

Mol	Chain	Res	Type	Group
1	A	117[B]	HIS	Mainchain
1	A	316[B]	ASP	Mainchain
1	A	435[B]	TYR	Mainchain
1	A	506	TYR	Sidechain
1	A	797[B]	HIS	Mainchain

5.2 Close contacts ⓘ

In the following table, the Non-H and H(model) columns list the number of non-hydrogen atoms and hydrogen atoms in the chain respectively. The H(added) column lists the number of hydrogens added by MolProbity. The Clashes column lists the number of clashes within the asymmetric unit, and the number in parentheses is this value normalized per 1000 atoms of the molecule in the chain. The Symm-Clashes column gives symmetry related clashes, in the same way as for the Clashes column.

Mol	Chain	Non-H	H(model)	H(added)	Clashes	Symm-Clashes
1	A	8291	0	8060	131	2
2	A	14	0	13	1	0
3	A	1	0	0	0	0
4	A	19	0	20	0	0
5	A	8	0	14	3	0
6	A	1158	0	0	37	0
All	All	9491	0	8107	134	2

Clashscore is defined as the number of clashes calculated for the entry per 1000 atoms (including hydrogens) of the entry. The overall clashscore for this entry is 8.

All (134) close contacts within the same asymmetric unit are listed below.

Atom-1	Atom-2	Distance(Å)	Clash(Å)
1:A:610:GLN:HG3	6:A:2865:HOH:O	1.37	1.24

Continued on next page...

Continued from previous page...

Atom-1	Atom-2	Distance(Å)	Clash(Å)
1:A:380:GLN:HG2	6:A:2260:HOH:O	1.56	1.03
1:A:981:ARG:HH11	1:A:981:ARG:HB2	1.25	1.00
1:A:280:LYS:NZ	1:A:301:VAL:HG21	1.78	0.99
1:A:47:GLU:OE2	1:A:51:ARG:HD3	1.62	0.98
1:A:709[A]:HIS:HD2	6:A:1815:HOH:O	1.50	0.93
1:A:280:LYS:HZ3	1:A:301:VAL:HG21	1.33	0.92
1:A:498[B]:GLN:HG2	1:A:526:LEU:HD12	1.52	0.90
1:A:82:LYS:HD2	1:A:375:GLN:HE22	1.38	0.88
1:A:117[B]:HIS:HE1	1:A:354:ARG:HE	1.19	0.87
1:A:981:ARG:HH11	1:A:981:ARG:CB	1.88	0.87
1:A:709[A]:HIS:CD2	6:A:1815:HOH:O	2.24	0.86
1:A:599:HIS:CD2	6:A:2865:HOH:O	2.32	0.83
1:A:48:LEU:O	1:A:52[B]:MET:HG3	1.77	0.83
1:A:256:ASP:HB2	6:A:2303:HOH:O	1.77	0.83
1:A:695[A]:LYS:HG3	1:A:709[A]:HIS:CE1	2.16	0.81
1:A:434:HIS:HE1	1:A:930:ASP:OD1	1.65	0.80
1:A:136:ARG:HD3	6:A:1988:HOH:O	1.82	0.79
1:A:435[B]:TYR:CE1	6:A:2430:HOH:O	2.35	0.79
1:A:541:THR:HG23	6:A:2064:HOH:O	1.82	0.79
1:A:435[B]:TYR:CZ	6:A:2430:HOH:O	2.36	0.78
5:A:1801:MPD:H13	6:A:1923:HOH:O	1.83	0.77
1:A:155:ASN:HD21	1:A:157:GLN:HE21	1.31	0.76
1:A:280:LYS:NZ	1:A:301:VAL:CG2	2.50	0.75
1:A:981:ARG:CZ	6:A:2214:HOH:O	2.35	0.75
1:A:707:PRO:HG2	1:A:797[B]:HIS:CE1	2.21	0.74
5:A:1801:MPD:H11	6:A:2832:HOH:O	1.88	0.73
1:A:957:LEU:HD13	1:A:981:ARG:NH1	2.05	0.72
1:A:964:ARG:HH11	1:A:973:GLN:HE21	1.37	0.71
1:A:498[A]:GLN:HE21	1:A:526:LEU:H	1.38	0.71
1:A:723:ARG:HH11	1:A:723:ARG:HG2	1.57	0.69
1:A:742:GLN:HG3	6:A:2135:HOH:O	1.95	0.67
1:A:47:GLU:OE1	1:A:51:ARG:NH1	2.27	0.67
1:A:957:LEU:HD13	1:A:981:ARG:HH12	1.60	0.66
1:A:536:VAL:O	1:A:537[B]:GLU:HG2	1.96	0.66
1:A:280:LYS:HZ1	1:A:301:VAL:CG2	2.10	0.65
1:A:434:HIS:HD2	1:A:927:ASP:OD1	1.80	0.65
1:A:981:ARG:NH1	1:A:981:ARG:HB2	2.06	0.64
1:A:82:LYS:HD2	1:A:375:GLN:NE2	2.10	0.64
1:A:989:THR:HG22	1:A:991:GLU:HG3	1.78	0.64
1:A:981:ARG:CG	1:A:981:ARG:HH11	2.10	0.64
1:A:280:LYS:HZ1	1:A:301:VAL:HG21	1.60	0.63
1:A:288:LYS:NZ	6:A:2714:HOH:O	2.31	0.63

Continued on next page...

Continued from previous page...

Atom-1	Atom-2	Distance(Å)	Clash(Å)
1:A:117[B]:HIS:CE1	1:A:354:ARG:HE	2.10	0.62
1:A:53[B]:SER:OG	1:A:55:LYS:HG2	1.99	0.61
1:A:222[A]:LYS:HD3	6:A:2236:HOH:O	1.99	0.61
1:A:693:LEU:HD13	6:A:2855:HOH:O	2.01	0.61
1:A:765:HIS:HE1	6:A:2880:HOH:O	1.85	0.59
1:A:981:ARG:NH2	6:A:2214:HOH:O	2.34	0.59
1:A:714:LYS:HE3	1:A:738:VAL:HG22	1.86	0.57
1:A:904:ARG:HG2	1:A:985:MET:SD	2.44	0.57
1:A:273:HIS:HE1	5:A:1801:MPD:O4	1.87	0.57
1:A:603:LEU:N	1:A:603:LEU:HD22	2.19	0.57
1:A:651:LEU:CD1	1:A:653:ARG:HG2	2.34	0.57
1:A:950:HIS:HE1	6:A:2324:HOH:O	1.88	0.57
1:A:494:LEU:O	1:A:498[B]:GLN:HG3	2.05	0.56
1:A:980:HIS:HE1	6:A:2221:HOH:O	1.88	0.55
1:A:695[A]:LYS:HG3	1:A:709[A]:HIS:HE1	1.70	0.55
1:A:48:LEU:O	1:A:52[A]:MET:HG3	2.06	0.55
1:A:589:GLU:OE2	1:A:751:LYS:HD3	2.07	0.55
1:A:626:PRO:O	1:A:950:HIS:HD2	1.90	0.54
1:A:62:TRP:CD2	1:A:65:GLY:HA3	2.43	0.53
1:A:293:PHE:HE1	1:A:346[B]:GLN:HE21	1.56	0.53
1:A:714:LYS:HD2	6:A:2848:HOH:O	2.07	0.53
1:A:980:HIS:HD2	1:A:1036:THR:OG1	1.92	0.53
1:A:541:THR:CG2	6:A:2064:HOH:O	2.49	0.53
1:A:435[B]:TYR:CE1	1:A:526:LEU:HD13	2.43	0.53
1:A:895:VAL:HG12	1:A:897:GLU:HG3	1.92	0.52
1:A:720:HIS:CD2	6:A:2943:HOH:O	2.63	0.51
1:A:678:LEU:HD13	1:A:769[A]:MET:HE3	1.93	0.51
1:A:480:THR:H	1:A:880:GLN:HE22	1.58	0.51
1:A:989:THR:CG2	1:A:991:GLU:HG3	2.42	0.50
1:A:786:ASP:CB	6:A:2939:HOH:O	2.60	0.50
1:A:678:LEU:HD12	1:A:769[A]:MET:HE1	1.93	0.49
1:A:425:HIS:HE1	1:A:487:GLU:OE1	1.95	0.49
1:A:542:THR:OG1	1:A:615:LYS:HD2	2.13	0.49
2:A:1802:NAG:H81	6:A:1972:HOH:O	2.12	0.49
1:A:786:ASP:HB3	6:A:2939:HOH:O	2.12	0.48
1:A:554:HIS:HE1	6:A:2096:HOH:O	1.95	0.48
1:A:765:HIS:HD2	1:A:778:ASN:OD1	1.95	0.48
1:A:304:ARG:NH1	6:A:2642:HOH:O	2.44	0.48
1:A:141:LEU:O	1:A:146[B]:LYS:NZ	2.46	0.48
1:A:93:PRO:HD2	1:A:470:HIS:CD2	2.48	0.48
1:A:554:HIS:HD2	6:A:2480:HOH:O	1.97	0.48
1:A:990:PRO:O	1:A:991:GLU:C	2.52	0.47

Continued on next page...

Continued from previous page...

Atom-1	Atom-2	Distance(Å)	Clash(Å)
1:A:158[A]:LEU:HD23	1:A:159:GLU:N	2.29	0.47
1:A:906:SER:HB3	6:A:1894:HOH:O	2.13	0.47
1:A:389:ALA:HB1	1:A:394:GLN:CG	2.44	0.47
1:A:389:ALA:HB1	1:A:394:GLN:HG2	1.97	0.47
1:A:981:ARG:CZ	1:A:1031:VAL:O	2.63	0.47
1:A:601:ASP:HB2	1:A:608:HIS:HE1	1.79	0.47
1:A:173[B]:SER:OG	1:A:178:VAL:HG23	2.15	0.47
1:A:723:ARG:HH11	1:A:723:ARG:CG	2.25	0.47
1:A:990:PRO:O	1:A:991:GLU:O	2.32	0.47
1:A:434:HIS:CE1	1:A:930:ASP:OD1	2.56	0.46
1:A:601:ASP:HB2	1:A:608:HIS:CE1	2.50	0.46
1:A:920:LYS:HG3	6:A:2453:HOH:O	2.16	0.46
1:A:345:LYS:HD3	1:A:346[A]:GLN:NE2	2.31	0.46
1:A:975:VAL:HG21	1:A:1003:LEU:CD1	2.46	0.46
1:A:419:TYR:CE2	1:A:830:PRO:HD3	2.51	0.46
1:A:345:LYS:HD3	1:A:346[A]:GLN:HE22	1.81	0.46
1:A:740:LEU:HD22	1:A:760:LEU:HD22	1.99	0.45
1:A:536:VAL:C	1:A:537[B]:GLU:HG2	2.36	0.45
1:A:380:GLN:CG	6:A:2260:HOH:O	2.33	0.44
1:A:641:PRO:HG2	1:A:644:THR:HB	2.00	0.44
1:A:270:ASP:OD1	1:A:273:HIS:HD2	2.01	0.44
1:A:138[A]:TYR:CE1	1:A:193[A]:MET:CE	3.01	0.43
1:A:251:TRP:C	1:A:251:TRP:CD1	2.91	0.43
1:A:981:ARG:NE	6:A:2214:HOH:O	2.47	0.43
1:A:174:HIS:CE1	1:A:176:ARG:HD3	2.54	0.43
1:A:57[B]:ILE:HG23	6:A:1916:HOH:O	2.18	0.43
1:A:981:ARG:CG	1:A:981:ARG:NH1	2.74	0.42
1:A:449:ASP:OD2	1:A:451:MET:HB2	2.19	0.42
1:A:47:GLU:CD	1:A:51:ARG:HH11	2.20	0.42
1:A:419:TYR:CZ	1:A:830:PRO:HD3	2.55	0.42
1:A:212[A]:MET:HB2	1:A:213:PRO:CD	2.49	0.42
1:A:48:LEU:HG	1:A:52[B]:MET:SD	2.60	0.42
1:A:138[A]:TYR:CE1	1:A:193[A]:MET:HE1	2.55	0.42
1:A:939:TRP:CD2	1:A:942:ALA:HB2	2.56	0.41
1:A:125:LYS:HE3	6:A:2274:HOH:O	2.20	0.41
1:A:640:LYS:HD2	1:A:646:TYR:CE1	2.56	0.41
1:A:1009:CYS:SG	1:A:1023:LEU:HD12	2.61	0.40
1:A:212[B]:MET:HB3	1:A:213:PRO:CD	2.51	0.40
1:A:79:HIS:HE1	6:A:2565:HOH:O	2.05	0.40
1:A:797[B]:HIS:O	1:A:798:ILE:C	2.58	0.40
1:A:714:LYS:HE2	1:A:714:LYS:HB3	1.84	0.40
1:A:96:ILE:HD12	1:A:479:LYS:HE2	2.04	0.40

All (2) symmetry-related close contacts are listed below. The label for Atom-2 includes the symmetry operator and encoded unit-cell translations to be applied.

Atom-1	Atom-2	Distance(Å)	Clash(Å)
1:A:316[B]:ASP:OD2	1:A:797[B]:HIS:ND1[2_565]	1.94	0.26
1:A:316[B]:ASP:OD2	1:A:797[B]:HIS:CE1[2_565]	1.96	0.24

5.3 Torsion angles

5.3.1 Protein backbone ⓘ

In the following table, the Percentiles column shows the percent Ramachandran outliers of the chain as a percentile score with respect to all X-ray entries followed by that with respect to entries of similar resolution. The Analysed column shows the number of residues for which the backbone conformation was analysed, and the total number of residues.

Mol	Chain	Analysed	Favoured	Allowed	Outliers	Percentiles	
1	A	1046/1045 (100%)	1012 (97%)	28 (3%)	6 (1%)	33	8

All (6) Ramachandran outliers are listed below:

Mol	Chain	Res	Type
1	A	991	GLU
1	A	95	TRP
1	A	993	HIS
1	A	204	ASP
1	A	549	ILE
1	A	798	ILE

5.3.2 Protein sidechains ⓘ

In the following table, the Percentiles column shows the percent sidechain outliers of the chain as a percentile score with respect to all X-ray entries followed by that with respect to entries of similar resolution. The Analysed column shows the number of residues for which the sidechain conformation was analysed, and the total number of residues.

Mol	Chain	Analysed	Rotameric	Outliers	Percentiles	
1	A	935/929 (101%)	925 (99%)	10 (1%)	84	60

All (10) residues with a non-rotameric sidechain are listed below:

Mol	Chain	Res	Type
1	A	158[A]	LEU
1	A	158[B]	LEU
1	A	206	PHE
1	A	275	CYS
1	A	451	MET
1	A	585	ASN
1	A	653	ARG
1	A	655	ASN
1	A	669	LYS
1	A	981	ARG

Some sidechains can be flipped to improve hydrogen bonding and reduce clashes. All (33) such sidechains are listed below:

Mol	Chain	Res	Type
1	A	79	HIS
1	A	91	ASN
1	A	148	GLN
1	A	157	GLN
1	A	191	GLN
1	A	240	GLN
1	A	249	GLN
1	A	273	HIS
1	A	347	ASN
1	A	375	GLN
1	A	388	GLN
1	A	394	GLN
1	A	425	HIS
1	A	434	HIS
1	A	460	GLN
1	A	469	GLN
1	A	470	HIS
1	A	488	GLN
1	A	554	HIS
1	A	599	HIS
1	A	608	HIS
1	A	655	ASN
1	A	765	HIS
1	A	812	GLN
1	A	880	GLN
1	A	885	ASN
1	A	901	ASN
1	A	950	HIS
1	A	973	GLN

Continued on next page...

Continued from previous page...

Mol	Chain	Res	Type
1	A	980	HIS
1	A	986	GLN
1	A	993	HIS
1	A	1018	GLN

5.3.3 RNA ⓘ

There are no RNA chains in this entry.

5.4 Non-standard residues in protein, DNA, RNA chains ⓘ

There are no non-standard protein/DNA/RNA residues in this entry.

5.5 Carbohydrates ⓘ

There are no carbohydrates in this entry.

5.6 Ligand geometry ⓘ

Of 4 ligands modelled in this entry, 1 is monoatomic - leaving 3 for Mogul analysis.

In the following table, the Counts columns list the number of bonds (or angles) for which Mogul statistics could be retrieved, the number of bonds (or angles) that are observed in the model and the number of bonds (or angles) that are defined in the chemical component dictionary. The Link column lists molecule types, if any, to which the group is linked. The Z score for a bond length (or angle) is the number of standard deviations the observed value is removed from the expected value. A bond length (or angle) with $|Z| > 2$ is considered an outlier worth inspection. RMSZ is the root-mean-square of all Z scores of the bond lengths (or angles).

Mol	Type	Chain	Res	Link	Bond lengths			Bond angles		
					Counts	RMSZ	$\# Z > 2$	Counts	RMSZ	$\# Z > 2$
5	MPD	A	1801	-	7,7,7	0.79	0	10,10,10	0.51	0
2	NAG	A	1802	1	12,14,15	0.64	0	15,19,21	1.12	1 (6%)
4	GB3	A	1803	3	20,20,20	1.47	3 (15%)	27,27,27	3.00	8 (29%)

In the following table, the Chirals column lists the number of chiral outliers, the number of chiral centers analysed, the number of these observed in the model and the number defined in the chemical component dictionary. Similar counts are reported in the Torsion and Rings columns. '-' means no outliers of that kind were identified.

Mol	Type	Chain	Res	Link	Chirals	Torsions	Rings
5	MPD	A	1801	-	1/1/2/2	0/5/5/5	0/0/0/0
2	NAG	A	1802	1	-	0/6/23/26	0/1/1/1
4	GB3	A	1803	3	-	0/11/27/27	0/2/2/2

All (3) bond length outliers are listed below:

Mol	Chain	Res	Type	Atoms	Z	Observed(Å)	Ideal(Å)
4	A	1803	GB3	C11-C10	3.71	1.45	1.39
4	A	1803	GB3	C15-C10	3.29	1.44	1.39
4	A	1803	GB3	C14-C15	2.26	1.44	1.39

All (9) bond angle outliers are listed below:

Mol	Chain	Res	Type	Atoms	Z	Observed(°)	Ideal(°)
4	A	1803	GB3	C6-N7-C8	11.71	126.96	113.67
4	A	1803	GB3	C9-C8-N7	5.60	115.89	108.55
4	A	1803	GB3	C5-C6-N7	3.36	118.07	111.58
4	A	1803	GB3	C3-C4-C5	3.27	108.27	102.74
4	A	1803	GB3	O3-C3-C2	3.09	119.32	112.45
4	A	1803	GB3	C10-C8-N7	-3.00	103.44	112.63
4	A	1803	GB3	O4-C4-C5	-2.86	106.13	112.29
2	A	1802	NAG	C2-N2-C7	-2.78	118.43	123.09
4	A	1803	GB3	C13-C12-C11	2.07	123.61	120.17

All (1) chirality outliers are listed below:

Mol	Chain	Res	Type	Atom
5	A	1801	MPD	C4

There are no torsion outliers.

There are no ring outliers.

5.7 Other polymers ⓘ

There are no such residues in this entry.

5.8 Polymer linkage issues

There are no chain breaks in this entry.

6 Fit of model and data ⓘ

6.1 Protein, DNA and RNA chains ⓘ

In the following table, the column labelled ‘#RSRZ> 2’ contains the number (and percentage) of RSRZ outliers, followed by percent RSRZ outliers for the chain as percentile scores relative to all X-ray entries and entries of similar resolution. The OWAB column contains the minimum, median, 95th percentile and maximum values of the occupancy-weighted average B-factor per residue. The column labelled ‘Q< 0.9’ lists the number of (and percentage) of residues with an average occupancy less than 0.9.

Mol	Chain	Analysed	<RSRZ>	#RSRZ>2	OWAB(Å ²)	Q<0.9
1	A	1014/1045 (97%)	-0.11	21 (2%) 60 67	7, 14, 28, 57	0

All (21) RSRZ outliers are listed below:

Mol	Chain	Res	Type	RSRZ
1	A	993	HIS	6.7
1	A	603	LEU	5.3
1	A	78	HIS	4.6
1	A	992	GLU	4.5
1	A	991	GLU	4.4
1	A	701	GLN	4.3
1	A	534	SER	4.2
1	A	990	PRO	4.2
1	A	602	THR	3.8
1	A	702	ASP	3.7
1	A	638	ASP	3.6
1	A	600	HIS	3.3
1	A	720	HIS	3.1
1	A	1024	ASP	3.0
1	A	538	ASP	2.8
1	A	536	VAL	2.7
1	A	784	SER	2.7
1	A	535	GLY	2.6
1	A	682	ASN	2.4
1	A	547	GLU	2.2
1	A	537[A]	GLU	2.1

6.2 Non-standard residues in protein, DNA, RNA chains ⓘ

There are no non-standard protein/DNA/RNA residues in this entry.

6.3 Carbohydrates ⓘ

There are no carbohydrates in this entry.

6.4 Ligands ⓘ

In the following table, the Atoms column lists the number of modelled atoms in the group and the number defined in the chemical component dictionary. LLDF column lists the quality of electron density of the group with respect to its neighbouring residues in protein, DNA or RNA chains. The B-factors column lists the minimum, median, 95th percentile and maximum values of B factors of atoms in the group. The column labelled 'Q < 0.9' lists the number of atoms with occupancy less than 0.9.

Mol	Type	Chain	Res	Atoms	RSR	LLDF	B-factors(Å ²)	Q<0.9
2	NAG	A	1802	14/15	0.33	7.51	34,41,44,46	0
4	GB3	A	1803	19/19	0.10	6.34	11,14,17,20	0
5	MPD	A	1801	8/8	0.12	1.74	18,21,22,23	0
3	ZN	A	1804	1/1	0.03	-3.76	9,9,9,9	0

6.5 Other polymers ⓘ

There are no such residues in this entry.