



# Full wwPDB X-ray Structure Validation Report ⓘ

Mar 1, 2014 – 01:27 AM GMT

PDB ID : 1F4X  
Title : CRYSTAL STRUCTURE OF AN ANTI-CARBOHYDRATE ANTIBODY  
DIRECTED AGAINST VIBRIO CHOLERAЕ O1 IN COMPLEX WITH  
ANTIGEN  
Authors : Alzari, P.M.; Souchon, H.  
Deposited on : 2000-06-10  
Resolution : 2.30 Å(reported)

This is a full wwPDB validation report for a publicly released PDB entry.  
We welcome your comments at [validation@mail.wwpdb.org](mailto:validation@mail.wwpdb.org)  
A user guide is available at <http://wwpdb.org/ValidationPDFNotes.html>

---

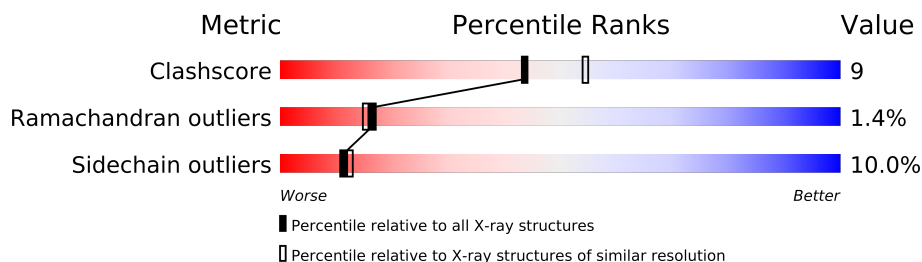
The following versions of software and data (see [references](#)) were used in the production of this report:

MolProbity : 4.02b-467  
Mogul : 1.15 2013  
Xtriage (Phenix) : **NOT EXECUTED**  
EDS : **NOT EXECUTED**  
Percentile statistics : 21963  
Ideal geometry (proteins) : Engh & Huber (2001)  
Ideal geometry (DNA, RNA) : Parkinson et. al. (1996)  
Validation Pipeline (wwPDB-VP) : stable22683

# 1 Overall quality at a glance

The reported resolution of this entry is 2.30 Å.

Percentile scores (ranging between 0-100) for global validation metrics of the entry are shown in the following graphic. The table shows the number of entries on which the scores are based.



Metric	Whole archive (#Entries)	Similar resolution (#Entries, resolution range(Å))
Clashscore	79885	3679 (2.30-2.30)
Ramachandran outliers	78287	3642 (2.30-2.30)
Sidechain outliers	78261	3641 (2.30-2.30)

The table below summarises the geometric issues observed across the polymeric chains and their fit to the electron density. The red, orange, yellow and green segments on the lower bar indicate the fraction of residues that contain outliers for  $\geq 3$ , 2, 1 and 0 types of geometric quality criteria. The upper red bar (where present) indicates the fraction of residues that have poor fit to the electron density.

Note EDS was not executed.

Mol	Chain	Length	Quality of chain
1	L	210	
2	H	216	

## 2 Entry composition i

There are 4 unique types of molecules in this entry. The entry contains 3231 atoms, of which 0 are hydrogen and 0 are deuterium.

In the tables below, the ZeroOcc column contains the number of atoms modelled with zero occupancy, the AltConf column contains the number of residues with at least one atom in alternate conformation and the Trace column contains the number of residues modelled with at most 2 atoms.

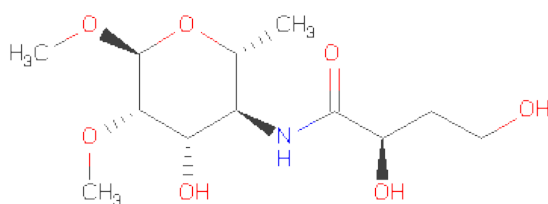
- Molecule 1 is a protein called ANTIBODY S-20-4, FAB FRAGMENT, LIGHT CHAIN.

Mol	Chain	Residues	Atoms					ZeroOcc	AltConf	Trace
1	L	210	Total	C	N	O	S	0	0	0
			1556	977	254	319	6			

- Molecule 2 is a protein called ANTIBODY S-20-4, FAB FRAGMENT, HEAVY CHAIN.

Mol	Chain	Residues	Atoms					ZeroOcc	AltConf	Trace
2	H	216	Total	C	N	O	S	0	0	0
			1598	1011	257	322	8			

- Molecule 3 is 1,2-O-DIMETHYL-4-[2,4-DIHYDROXY-BUTYRAMIDO]-4,6-DIDEOXY-ALPHA-D-MANNOPYRANOSIDE (three-letter code: MGS) (formula: C<sub>12</sub>H<sub>23</sub>NO<sub>7</sub>).



Mol	Chain	Residues	Atoms				ZeroOcc	AltConf
3	H	1	Total	C	N	O	0	0
			20	12	1	7		

- Molecule 4 is water.

Mol	Chain	Residues	Atoms		ZeroOcc	AltConf
4	H	24	Total 24	O 24	0	0
4	L	33	Total 33	O 33	0	0

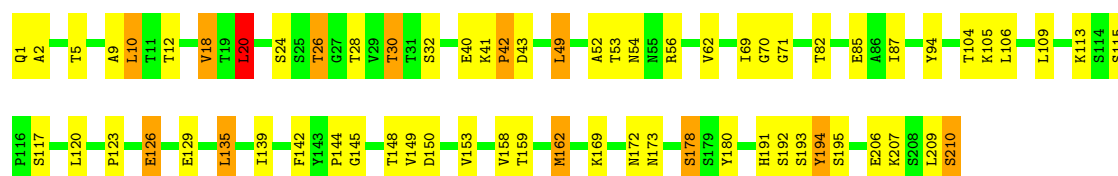
### 3 Residue-property plots

These plots are drawn for all protein, RNA and DNA chains in the entry. The first graphic for a chain summarises the proportions of errors displayed in the second graphic. The second graphic shows the sequence view annotated by issues in geometry and electron density. Residues are color-coded according to the number of geometric quality criteria for which they contain at least one outlier: green = 0, yellow = 1, orange = 2 and red = 3 or more. A red dot above a residue indicates a poor fit to the electron density ( $RSRZ > 2$ ). Stretches of 2 or more consecutive residues without any outlier are shown as a green connector. Residues present in the sample, but not in the model, are shown in grey.

Note EDS was not executed.

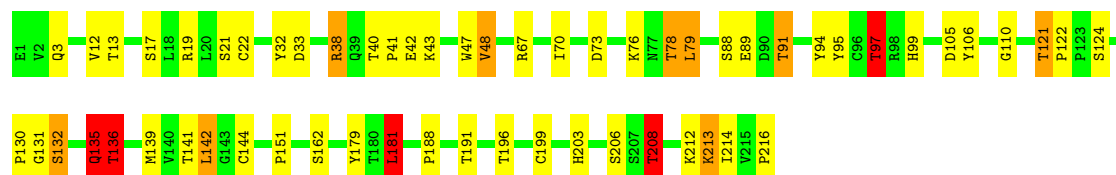
#### • Molecule 1: ANTIBODY S-20-4, FAB FRAGMENT, LIGHT CHAIN

Chain L: 



#### • Molecule 2: ANTIBODY S-20-4, FAB FRAGMENT, HEAVY CHAIN

Chain H: 



## 4 Data and refinement statistics

Xtriage (Phenix) and EDS were not executed - this section will therefore be incomplete.

Property	Value	Source
Space group	P 1 21 1	Depositor
Cell constants a, b, c, $\alpha$ , $\beta$ , $\gamma$	45.57Å 113.09Å 46.24Å 90.00° 100.57° 90.00°	Depositor
Resolution (Å)	10.00 – 2.30	Depositor
% Data completeness (in resolution range)	(Not available) (10.00-2.30)	Depositor
$R_{merge}$	0.08	Depositor
$R_{sym}$	(Not available)	Depositor
Refinement program	REFMAC	Depositor
R, $R_{free}$	0.185 , 0.250	Depositor
Estimated twinning fraction	No twinning to report.	Xtriage
Total number of atoms	3231	wwPDB-VP
Average B, all atoms (Å <sup>2</sup> )	41.0	wwPDB-VP

## 5 Model quality ⓘ

### 5.1 Standard geometry ⓘ

Bond lengths and bond angles in the following residue types are not validated in this section: MGS

The Z score for a bond length (or angle) is the number of standard deviations the observed value is removed from the expected value. A bond length (or angle) with  $|Z| > 5$  is considered an outlier worth inspection. RMSZ is the root-mean-square of all Z scores of the bond lengths (or angles).

Mol	Chain	Bond lengths		Bond angles	
		RMSZ	# Z  >5	RMSZ	# Z  >5
1	L	0.81	1/1592 (0.1%)	1.75	20/2180 (0.9%)
2	H	0.83	2/1641 (0.1%)	1.81	32/2252 (1.4%)
All	All	0.82	3/3233 (0.1%)	1.78	52/4432 (1.2%)

All (3) bond length outliers are listed below:

Mol	Chain	Res	Type	Atoms	Z	Observed(Å)	Ideal(Å)
2	H	216	PRO	N-CD	6.22	1.56	1.47
1	L	178	SER	CA-CB	5.49	1.61	1.52
2	H	21	SER	CA-CB	5.01	1.60	1.52

All (52) bond angle outliers are listed below:

Mol	Chain	Res	Type	Atoms	Z	Observed(°)	Ideal(°)
2	H	105	ASP	CB-CG-OD1	13.67	130.60	118.30
2	H	38	ARG	NE-CZ-NH1	12.73	126.67	120.30
1	L	56	ARG	NE-CZ-NH2	-12.37	114.11	120.30
1	L	56	ARG	CD-NE-CZ	11.29	139.41	123.60
2	H	67	ARG	NE-CZ-NH1	10.12	125.36	120.30
1	L	150	ASP	CB-CG-OD2	-9.14	110.08	118.30
2	H	38	ARG	NE-CZ-NH2	-8.89	115.85	120.30
1	L	18	VAL	CB-CA-C	-8.31	95.61	111.40
1	L	129	GLU	CA-CB-CG	7.99	130.98	113.40
1	L	126	GLU	OE1-CD-OE2	7.53	132.33	123.30
2	H	124	SER	N-CA-CB	7.40	121.61	110.50
1	L	150	ASP	CB-CG-OD1	7.27	124.84	118.30
1	L	194	TYR	CB-CG-CD2	-7.24	116.66	121.00
2	H	208	THR	N-CA-CB	-7.03	96.94	110.30
1	L	193	SER	CB-CA-C	-6.98	96.84	110.10
1	L	56	ARG	NE-CZ-NH1	6.80	123.70	120.30

*Continued on next page...*

*Continued from previous page...*

Mol	Chain	Res	Type	Atoms	Z	Observed(°)	Ideal(°)
2	H	97	THR	N-CA-CB	6.77	123.16	110.30
2	H	97	THR	CB-CA-C	-6.55	93.90	111.60
2	H	139	MET	CA-CB-CG	6.50	124.34	113.30
2	H	48	VAL	N-CA-CB	-6.34	97.56	111.50
2	H	38	ARG	CD-NE-CZ	-6.18	114.95	123.60
2	H	105	ASP	CB-CG-OD2	-6.17	112.75	118.30
2	H	181	LEU	CA-CB-CG	6.08	129.29	115.30
1	L	194	TYR	CB-CG-CD1	6.01	124.61	121.00
2	H	199	CYS	N-CA-CB	6.00	121.41	110.60
2	H	144	CYS	CA-CB-SG	-5.92	103.34	114.00
2	H	73	ASP	CB-CG-OD2	-5.91	112.98	118.30
1	L	49	LEU	CA-CB-CG	5.83	128.72	115.30
1	L	94	TYR	CB-CG-CD1	-5.81	117.52	121.00
2	H	97	THR	CA-CB-OG1	5.78	121.14	109.00
2	H	21	SER	CB-CA-C	-5.74	99.20	110.10
1	L	40	GLU	OE1-CD-OE2	-5.73	116.42	123.30
2	H	21	SER	O-C-N	5.66	131.75	122.70
1	L	178	SER	CA-CB-OG	-5.61	96.05	111.20
2	H	95	TYR	CB-CG-CD1	5.59	124.35	121.00
1	L	20	LEU	CA-CB-CG	5.57	128.11	115.30
1	L	126	GLU	CA-CB-CG	-5.48	101.35	113.40
2	H	67	ARG	NE-CZ-NH2	-5.46	117.57	120.30
2	H	19	ARG	CD-NE-CZ	5.40	131.16	123.60
2	H	47	TRP	O-C-N	-5.40	114.07	122.70
1	L	172	ASN	C-N-CA	5.28	134.91	121.70
2	H	179	TYR	CB-CG-CD1	5.23	124.14	121.00
2	H	79	LEU	O-C-N	-5.22	114.34	122.70
2	H	73	ASP	CB-CG-OD1	5.19	122.97	118.30
2	H	21	SER	CA-CB-OG	-5.16	97.28	111.20
2	H	89	GLU	O-C-N	-5.14	114.47	122.70
2	H	32	TYR	CA-C-O	5.12	130.86	120.10
1	L	129	GLU	N-CA-CB	-5.11	101.40	110.60
2	H	181	LEU	CB-CG-CD2	5.09	119.65	111.00
1	L	42	PRO	CA-C-N	-5.08	106.01	117.20
2	H	162	SER	CB-CA-C	-5.04	100.52	110.10
2	H	67	ARG	CD-NE-CZ	5.03	130.65	123.60

There are no chirality outliers.

There are no planarity outliers.



## 5.2 Close contacts ⓘ

In the following table, the Non-H and H(model) columns list the number of non-hydrogen atoms and hydrogen atoms in the chain respectively. The H(added) column lists the number of hydrogens added by MolProbity. The Clashes column lists the number of clashes within the asymmetric unit, and the number in parentheses is this value normalized per 1000 atoms of the molecule in the chain. The Symm-Clashes column gives symmetry related clashes, in the same way as for the Clashes column.

Mol	Chain	Non-H	H(model)	H(added)	Clashes	Symm-Clashes
1	L	1556	0	1490	27	0
2	H	1598	0	1517	27	0
3	H	20	0	23	1	0
4	H	24	0	0	0	0
4	L	33	0	0	0	0
All	All	3231	0	3030	54	0

Clashscore is defined as the number of clashes calculated for the entry per 1000 atoms (including hydrogens) of the entry. The overall clashscore for this entry is 9.

All (54) close contacts within the same asymmetric unit are listed below.

Atom-1	Atom-2	Distance(Å)	Clash(Å)
2:H:196:THR:HG23	2:H:213:LYS:HD3	1.47	0.96
2:H:88:SER:O	2:H:91:THR:HG23	1.84	0.78
1:L:87:ILE:HD12	1:L:105:LYS:HG2	1.69	0.74
2:H:122:PRO:HB3	2:H:208:THR:HG21	1.69	0.74
2:H:40:THR:HB	2:H:41:PRO:HD2	1.71	0.72
1:L:30:THR:HG22	1:L:32:SER:H	1.54	0.71
1:L:1:GLN:HG2	1:L:2:ALA:H	1.60	0.67
1:L:30:THR:CG2	1:L:32:SER:H	2.09	0.66
2:H:203:HIS:HB3	2:H:208:THR:HG22	1.78	0.66
1:L:169:LYS:HE3	1:L:173:ASN:OD1	1.96	0.66
1:L:20:LEU:HD13	1:L:104:THR:HG21	1.81	0.62
2:H:130:PRO:HD3	2:H:142:LEU:CD1	2.29	0.62
2:H:130:PRO:HD3	2:H:142:LEU:HD12	1.82	0.62
1:L:191:HIS:HB2	1:L:194:TYR:OH	2.04	0.58
2:H:135:GLN:O	2:H:136:THR:C	2.40	0.57
1:L:113:LYS:HG2	1:L:144:PRO:HD3	1.85	0.56
2:H:12:VAL:HG12	2:H:13:THR:H	1.71	0.56
1:L:120:LEU:CD2	1:L:209:LEU:HG	2.36	0.55
1:L:169:LYS:NZ	1:L:173:ASN:HB3	2.22	0.54
2:H:76:LYS:HB2	2:H:78:THR:HG23	1.88	0.54
2:H:131:GLY:O	2:H:132:SER:HB2	2.09	0.52
1:L:24:SER:OG	1:L:26:THR:HB	2.09	0.52

*Continued on next page...*

*Continued from previous page...*

Atom-1	Atom-2	Distance(Å)	Clash(Å)
2:H:12:VAL:HG12	2:H:13:THR:N	2.25	0.51
2:H:203:HIS:HD2	2:H:206:SER:OG	1.93	0.51
1:L:120:LEU:HD23	1:L:209:LEU:HG	1.94	0.50
2:H:76:LYS:O	2:H:78:THR:HG22	2.13	0.49
1:L:153:VAL:HG23	1:L:158:VAL:CG2	2.43	0.49
2:H:42:GLU:O	2:H:43:LYS:HB2	2.13	0.48
1:L:12:THR:HG21	1:L:18:VAL:HG22	1.96	0.48
1:L:192:SER:O	1:L:210:SER:HA	2.15	0.47
1:L:41:LYS:HB3	1:L:42:PRO:CD	2.45	0.46
2:H:181:LEU:HD23	2:H:181:LEU:C	2.37	0.45
2:H:188:PRO:HD2	2:H:191:THR:OG1	2.16	0.45
2:H:70:ILE:HD11	2:H:79:LEU:HD11	1.98	0.45
1:L:139:ILE:HG22	1:L:142:PHE:CD1	2.52	0.45
1:L:169:LYS:HZ1	1:L:173:ASN:HB3	1.83	0.44
2:H:38:ARG:HD3	2:H:48:VAL:HG21	2.00	0.43
1:L:139:ILE:HG22	1:L:142:PHE:CE1	2.54	0.43
2:H:94:TYR:O	2:H:110:GLY:HA2	2.17	0.43
2:H:97:THR:HG22	2:H:106:TYR:O	2.19	0.43
1:L:85:GLU:HA	1:L:106:LEU:O	2.19	0.43
2:H:121:THR:HA	2:H:122:PRO:HD3	1.86	0.43
2:H:142:LEU:HG	2:H:214:ILE:HG21	2.00	0.43
1:L:28:THR:HG23	1:L:71:GLY:HA2	2.00	0.43
1:L:52:ALA:O	1:L:53:THR:HB	2.19	0.43
2:H:151:PRO:O	2:H:203:HIS:HE1	2.02	0.43
2:H:40:THR:HB	2:H:41:PRO:CD	2.45	0.42
1:L:123:PRO:HD3	1:L:135:LEU:HD22	2.00	0.42
1:L:9:ALA:O	1:L:10:LEU:HD13	2.20	0.41
1:L:162:MET:HA	1:L:180:TYR:O	2.20	0.41
3:H:301:MGS:HC73	3:H:301:MGS:HC5	2.02	0.41
2:H:33:ASP:HB2	2:H:99:HIS:HB2	2.02	0.41
1:L:126:GLU:OE1	2:H:212:LYS:NZ	2.42	0.41
1:L:69:ILE:O	1:L:70:GLY:C	2.60	0.40

There are no symmetry-related clashes.

## 5.3 Torsion angles

### 5.3.1 Protein backbone ⓘ

In the following table, the Percentiles column shows the percent Ramachandran outliers of the chain as a percentile score with respect to all X-ray entries followed by that with respect to entries

of similar resolution. The Analysed column shows the number of residues for which the backbone conformation was analysed, and the total number of residues.

Mol	Chain	Analysed	Favoured	Allowed	Outliers	Percentiles	
1	L	208/210 (99%)	198 (95%)	7 (3%)	3 (1%)	16	15
2	H	214/216 (99%)	203 (95%)	8 (4%)	3 (1%)	16	15
All	All	422/426 (99%)	401 (95%)	15 (4%)	6 (1%)	16	15

All (6) Ramachandran outliers are listed below:

Mol	Chain	Res	Type
2	H	135	GLN
1	L	43	ASP
2	H	132	SER
1	L	109	LEU
2	H	136	THR
1	L	145	GLY

### 5.3.2 Protein sidechains ⓘ

In the following table, the Percentiles column shows the percent sidechain outliers of the chain as a percentile score with respect to all X-ray entries followed by that with respect to entries of similar resolution. The Analysed column shows the number of residues for which the sidechain conformation was analysed, and the total number of residues.

Mol	Chain	Analysed	Rotameric	Outliers	Percentiles	
1	L	172/177 (97%)	151 (88%)	21 (12%)	7	7
2	H	178/186 (96%)	164 (92%)	14 (8%)	18	21
All	All	350/363 (96%)	315 (90%)	35 (10%)	11	12

All (35) residues with a non-rotameric sidechain are listed below:

Mol	Chain	Res	Type
1	L	5	THR
1	L	10	LEU
1	L	20	LEU
1	L	26	THR
1	L	30	THR
1	L	49	LEU
1	L	54	ASN
1	L	62	VAL
1	L	82	THR

*Continued on next page...*

*Continued from previous page...*

Mol	Chain	Res	Type
1	L	115	SER
1	L	117	SER
1	L	135	LEU
1	L	148	THR
1	L	149	VAL
1	L	159	THR
1	L	162	MET
1	L	178	SER
1	L	195	SER
1	L	206	GLU
1	L	207	LYS
1	L	210	SER
2	H	3	GLN
2	H	17	SER
2	H	22	CYS
2	H	78	THR
2	H	91	THR
2	H	97	THR
2	H	121	THR
2	H	135	GLN
2	H	136	THR
2	H	141	THR
2	H	142	LEU
2	H	181	LEU
2	H	208	THR
2	H	213	LYS

Some sidechains can be flipped to improve hydrogen bonding and reduce clashes. All (4) such sidechains are listed below:

Mol	Chain	Res	Type
1	L	54	ASN
1	L	111	GLN
1	L	191	HIS
2	H	203	HIS

### 5.3.3 RNA ⓘ

There are no RNA chains in this entry.

## 5.4 Non-standard residues in protein, DNA, RNA chains ⓘ

There are no non-standard protein/DNA/RNA residues in this entry.

## 5.5 Carbohydrates ⓘ

There are no carbohydrates in this entry.

## 5.6 Ligand geometry ⓘ

1 ligand is modelled in this entry.

In the following table, the Counts columns list the number of bonds (or angles) for which Mogul statistics could be retrieved, the number of bonds (or angles) that are observed in the model and the number of bonds (or angles) that are defined in the chemical component dictionary. The Link column lists molecule types, if any, to which the group is linked. The Z score for a bond length (or angle) is the number of standard deviations the observed value is removed from the expected value. A bond length (or angle) with  $|Z| > 2$  is considered an outlier worth inspection. RMSZ is the root-mean-square of all Z scores of the bond lengths (or angles).

Mol	Type	Chain	Res	Link	Bond lengths			Bond angles		
					Counts	RMSZ	$\# Z  > 2$	Counts	RMSZ	$\# Z  > 2$
3	MGS	H	301	-	20,20,20	0.97	1 (5%)	27,27,27	3.45	8 (29%)

In the following table, the Chirals column lists the number of chiral outliers, the number of chiral centers analysed, the number of these observed in the model and the number defined in the chemical component dictionary. Similar counts are reported in the Torsion and Rings columns. '-' means no outliers of that kind were identified.

Mol	Type	Chain	Res	Link	Chirals	Torsions	Rings
3	MGS	H	301	-	-	0/15/35/35	0/1/1/1

All (1) bond length outliers are listed below:

Mol	Chain	Res	Type	Atoms	Z	Observed(Å)	Ideal(Å)
3	H	301	MGS	C4-N4	2.88	1.50	1.45

All (8) bond angle outliers are listed below:

Mol	Chain	Res	Type	Atoms	Z	Observed(°)	Ideal(°)
3	H	301	MGS	C10-C9-N4	10.64	138.18	116.43
3	H	301	MGS	C4-N4-C9	-8.51	110.23	123.07
3	H	301	MGS	O9-C9-C10	-7.16	106.52	120.66

*Continued on next page...*

*Continued from previous page...*

Mol	Chain	Res	Type	Atoms	Z	Observed(°)	Ideal(°)
3	H	301	MGS	O9-C9-N4	-3.99	115.24	122.93
3	H	301	MGS	O10-C10-C11	3.76	120.68	109.45
3	H	301	MGS	O12-C12-C11	-3.62	98.95	111.35
3	H	301	MGS	C8-O2-C2	-2.68	107.30	114.56
3	H	301	MGS	C1-O5-C5	-2.40	109.56	113.55

There are no chirality outliers.

There are no torsion outliers.

There are no ring outliers.

## 5.7 Other polymers ⓘ

There are no such residues in this entry.

## 5.8 Polymer linkage issues

There are no chain breaks in this entry.

## 6 Fit of model and data

### 6.1 Protein, DNA and RNA chains

EDS was not executed - this section will therefore be empty.

### 6.2 Non-standard residues in protein, DNA, RNA chains

EDS was not executed - this section will therefore be empty.

### 6.3 Carbohydrates

EDS was not executed - this section will therefore be empty.

### 6.4 Ligands

EDS was not executed - this section will therefore be empty.

### 6.5 Other polymers

EDS was not executed - this section will therefore be empty.