



# wwPDB X-ray Structure Validation Summary Report

Feb 27, 2014 – 05:24 AM GMT

PDB ID : 1F4Y  
Title : CRYSTAL STRUCTURE OF AN ANTI-CARBOHYDRATE ANTIBODY  
DIRECTED AGAINST VIBRIO CHOLERAЕ O1 IN COMPLEX WITH  
ANTIGEN  
Authors : Alzari, P.M.; Souchon, H.  
Deposited on : 2000-06-10  
Resolution : 2.80 Å(reported)

This is a wwPDB validation summary report for a publicly released PDB entry.  
We welcome your comments at [validation@mail.wwpdb.org](mailto:validation@mail.wwpdb.org)  
A user guide is available at <http://wwpdb.org/ValidationPDFNotes.html>

---

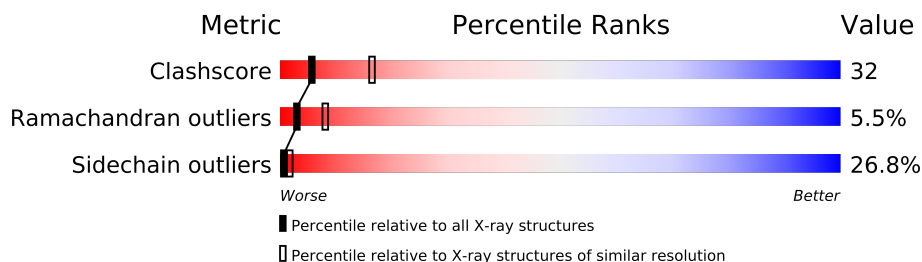
The following versions of software and data (see [references](#)) were used in the production of this report:

MolProbity : 4.02b-467  
Mogul : 1.15 2013  
Xtriage (Phenix) : **NOT EXECUTED**  
EDS : **NOT EXECUTED**  
Percentile statistics : 21963  
Ideal geometry (proteins) : Engh & Huber (2001)  
Ideal geometry (DNA, RNA) : Parkinson et. al. (1996)  
Validation Pipeline (wwPDB-VP) : stable22683

# 1 Overall quality at a glance

The reported resolution of this entry is 2.80 Å.

Percentile scores (ranging between 0-100) for global validation metrics of the entry are shown in the following graphic. The table shows the number of entries on which the scores are based.



Metric	Whole archive (#Entries)	Similar resolution (#Entries, resolution range(Å))
Clashscore	79885	2295 (2.80-2.80)
Ramachandran outliers	78287	2252 (2.80-2.80)
Sidechain outliers	78261	2254 (2.80-2.80)

The table below summarises the geometric issues observed across the polymeric chains and their fit to the electron density. The red, orange, yellow and green segments on the lower bar indicate the fraction of residues that contain outliers for  $\geq 3$ , 2, 1 and 0 types of geometric quality criteria. The upper red bar (where present) indicates the fraction of residues that have poor fit to the electron density.

Note EDS was not executed.

Mol	Chain	Length	Quality of chain
1	L	210	
2	H	216	

## 2 Entry composition i

There are 3 unique types of molecules in this entry. The entry contains 3231 atoms, of which 0 are hydrogen and 0 are deuterium.

In the tables below, the ZeroOcc column contains the number of atoms modelled with zero occupancy, the AltConf column contains the number of residues with at least one atom in alternate conformation and the Trace column contains the number of residues modelled with at most 2 atoms.

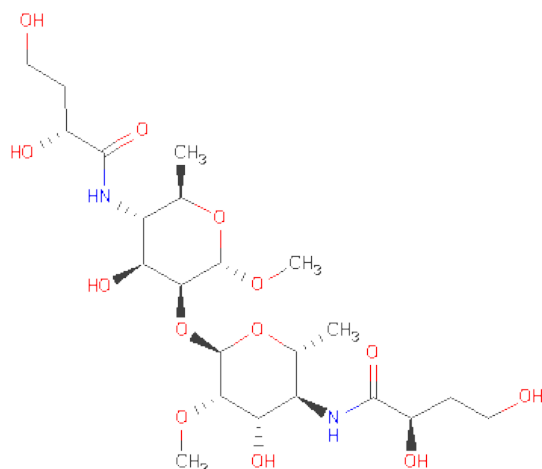
- Molecule 1 is a protein called ANTIBODY S-20-4, FAB FRAGMENT, LIGHT CHAIN.

Mol	Chain	Residues	Atoms					ZeroOcc	AltConf	Trace
			Total	C	N	O	S			
1	L	210	1578	989	262	321	6	0	0	0

- Molecule 2 is a protein called ANTIBODY S-20-4, FAB FRAGMENT, HEAVY CHAIN.

Mol	Chain	Residues	Atoms					ZeroOcc	AltConf	Trace
			Total	C	N	O	S			
2	H	216	1616	1022	262	324	8	0	0	0

- Molecule 3 is 2-O-[2-O-METHYL-4-[2,4-DIHYDROXY-BUTYRAMIDO]-4,6-DIDEOXY-]-ALPHA-D-MANNOPYRANOSYL-[1-O-METHYL-4-[2,4-DIHYDROXY-BUTYRAMIDO]-4,6-DIDEOXY]-ALPHA-D-MANNOPYRANOSE (three-letter code: MGU) (formula: C<sub>22</sub>H<sub>40</sub>N<sub>2</sub>O<sub>13</sub>).



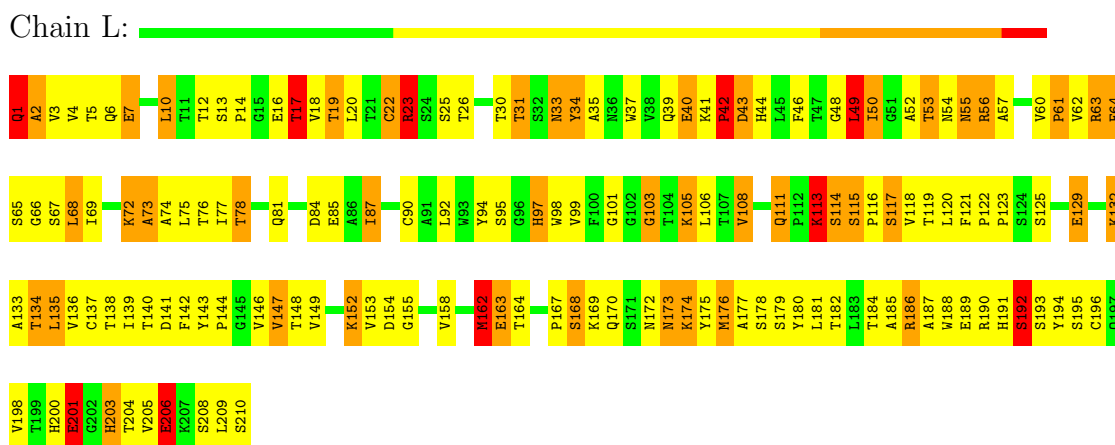
Mol	Chain	Residues	Atoms				ZeroOcc	AltConf
			Total	C	N	O		
3	H	1	37	22	2	13	0	0

### 3 Residue-property plots

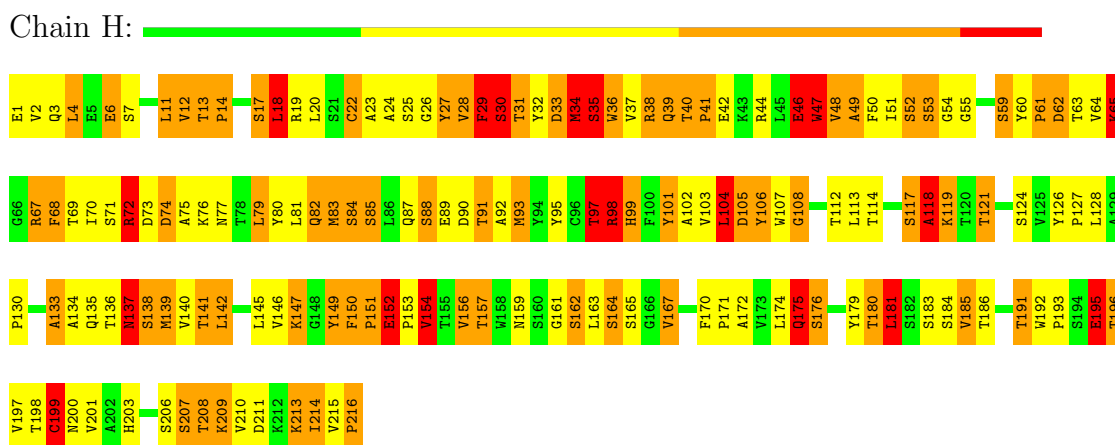
These plots are drawn for all protein, RNA and DNA chains in the entry. The first graphic for a chain summarises the proportions of errors displayed in the second graphic. The second graphic shows the sequence view annotated by issues in geometry and electron density. Residues are color-coded according to the number of geometric quality criteria for which they contain at least one outlier: green = 0, yellow = 1, orange = 2 and red = 3 or more. A red dot above a residue indicates a poor fit to the electron density ( $RSRZ > 2$ ). Stretches of 2 or more consecutive residues without any outlier are shown as a green connector. Residues present in the sample, but not in the model, are shown in grey.

Note EDS was not executed.

- Molecule 1: ANTIBODY S-20-4, FAB FRAGMENT, LIGHT CHAIN



- Molecule 2: ANTIBODY S-20-4, FAB FRAGMENT, HEAVY CHAIN



## 4 Data and refinement statistics

Xtriage (Phenix) and EDS were not executed - this section will therefore be incomplete.

Property	Value	Source
Space group	P 1 21 1	Depositor
Cell constants a, b, c, $\alpha$ , $\beta$ , $\gamma$	40.69Å 113.36Å 45.58Å 90.00° 93.93° 90.00°	Depositor
Resolution (Å)	10.00 – 2.80	Depositor
% Data completeness (in resolution range)	(Not available) (10.00-2.80)	Depositor
$R_{merge}$	0.08	Depositor
$R_{sym}$	(Not available)	Depositor
Refinement program	REFMAC	Depositor
R, $R_{free}$	0.226 , 0.352	Depositor
Estimated twinning fraction	No twinning to report.	Xtriage
Total number of atoms	3231	wwPDB-VP
Average B, all atoms (Å <sup>2</sup> )	25.0	wwPDB-VP

## 5 Model quality i

### 5.1 Standard geometry i

Bond lengths and bond angles in the following residue types are not validated in this section: MGU

The Z score for a bond length (or angle) is the number of standard deviations the observed value is removed from the expected value. A bond length (or angle) with  $|Z| > 5$  is considered an outlier worth inspection. RMSZ is the root-mean-square of all Z scores of the bond lengths (or angles).

Mol	Chain	Bond lengths		Bond angles	
		RMSZ	$\# Z  > 5$	RMSZ	$\# Z  > 5$
1	L	0.91	0/1615	2.39	93/2208 (4.2%)
2	H	0.97	1/1659 (0.1%)	2.70	115/2272 (5.1%)
All	All	0.94	1/3274 (0.0%)	2.55	208/4480 (4.6%)

Chiral center outliers are detected by calculating the chiral volume of a chiral center and verifying if the center is modelled as a planar moiety or with the opposite hand. A planarity outlier is detected by checking planarity of atoms in a peptide group, atoms in a mainchain group or atoms of a sidechain that are expected to be planar.

Mol	Chain	#Chirality outliers	#Planarity outliers
1	L	0	2
2	H	0	1
All	All	0	3

All (1) bond length outliers are listed below:

Mol	Chain	Res	Type	Atoms	Z	Observed(Å)	Ideal(Å)
2	H	216	PRO	N-CD	5.06	1.54	1.47

The worst 5 of 208 bond angle outliers are listed below:

Mol	Chain	Res	Type	Atoms	Z	Observed(°)	Ideal(°)
2	H	98	ARG	CD-NE-CZ	34.23	171.52	123.60
2	H	98	ARG	NE-CZ-NH1	24.91	132.75	120.30
2	H	98	ARG	NE-CZ-NH2	-24.70	107.95	120.30
1	L	56	ARG	CD-NE-CZ	18.24	149.14	123.60
2	H	19	ARG	NE-CZ-NH2	-17.63	111.49	120.30

There are no chirality outliers.

All (3) planarity outliers are listed below:

Mol	Chain	Res	Type	Group
2	H	209	LYS	Mainchain
1	L	117	SER	Mainchain
1	L	174	LYS	Mainchain

## 5.2 Close contacts

In the following table, the Non-H and H(model) columns list the number of non-hydrogen atoms and hydrogen atoms in the chain respectively. The H(added) column lists the number of hydrogens added by MolProbity. The Clashes column lists the number of clashes within the asymmetric unit, and the number in parentheses is this value normalized per 1000 atoms of the molecule in the chain. The Symm-Clashes column gives symmetry related clashes, in the same way as for the Clashes column.

Mol	Chain	Non-H	H(model)	H(added)	Clashes	Symm-Clashes
1	L	1578	0	1523	85	0
2	H	1616	0	1553	112	0
3	H	37	0	40	17	0
All	All	3231	0	3116	202	0

Clashscore is defined as the number of clashes calculated for the entry per 1000 atoms (including hydrogens) of the entry. The overall clashscore for this entry is 32.

The worst 5 of 202 close contacts within the same asymmetric unit are listed below.

Atom-1	Atom-2	Distance(Å)	Clash(Å)
3:H:301:MGU:C23	3:H:301:MGU:C27	2.21	1.15
3:H:301:MGU:C23	3:H:301:MGU:H273	1.42	1.15
3:H:301:MGU:HC23	3:H:301:MGU:C27	1.79	1.07
1:L:41:LYS:HD2	1:L:42:PRO:HD2	1.42	1.02
3:H:301:MGU:HC4	3:H:301:MGU:HC83	1.45	0.99

There are no symmetry-related clashes.

## 5.3 Torsion angles

### 5.3.1 Protein backbone

In the following table, the Percentiles column shows the percent Ramachandran outliers of the chain as a percentile score with respect to all X-ray entries followed by that with respect to entries of similar resolution. The Analysed column shows the number of residues for which the backbone conformation was analysed, and the total number of residues.

Mol	Chain	Analysed	Favoured	Allowed	Outliers	Percentiles	
1	L	208/210 (99%)	178 (86%)	20 (10%)	10 (5%)	4	10
2	H	214/216 (99%)	179 (84%)	22 (10%)	13 (6%)	2	6
All	All	422/426 (99%)	357 (85%)	42 (10%)	23 (6%)	3	8

5 of 23 Ramachandran outliers are listed below:

Mol	Chain	Res	Type
1	L	43	ASP
1	L	53	THR
1	L	103	GLY
2	H	29	PHE
2	H	62	ASP

### 5.3.2 Protein sidechains ⓘ

In the following table, the Percentiles column shows the percent sidechain outliers of the chain as a percentile score with respect to all X-ray entries followed by that with respect to entries of similar resolution. The Analysed column shows the number of residues for which the sidechain conformation was analysed, and the total number of residues.

Mol	Chain	Analysed	Rotameric	Outliers	Percentiles	
1	L	176/177 (99%)	138 (78%)	38 (22%)	1	4
2	H	182/186 (98%)	124 (68%)	58 (32%)	0	1
All	All	358/363 (99%)	262 (73%)	96 (27%)	1	2

5 of 96 residues with a non-rotameric sidechain are listed below:

Mol	Chain	Res	Type
2	H	14	PRO
2	H	40	THR
2	H	181	LEU
2	H	17	SER
2	H	30	SER

Some sidechains can be flipped to improve hydrogen bonding and reduce clashes. 5 of 6 such sidechains are listed below:

Mol	Chain	Res	Type
2	H	39	GLN
2	H	203	HIS
2	H	82	GLN

*Continued on next page...*



*Continued from previous page...*

Mol	Chain	Res	Type
2	H	3	GLN
2	H	175	GLN

### 5.3.3 RNA ⓘ

There are no RNA chains in this entry.

## 5.4 Non-standard residues in protein, DNA, RNA chains ⓘ

There are no non-standard protein/DNA/RNA residues in this entry.

## 5.5 Carbohydrates ⓘ

There are no carbohydrates in this entry.

## 5.6 Ligand geometry ⓘ

1 ligand is modelled in this entry.

In the following table, the Counts columns list the number of bonds (or angles) for which Mogul statistics could be retrieved, the number of bonds (or angles) that are observed in the model and the number of bonds (or angles) that are defined in the chemical component dictionary. The Link column lists molecule types, if any, to which the group is linked. The Z score for a bond length (or angle) is the number of standard deviations the observed value is removed from the expected value. A bond length (or angle) with  $|Z| > 2$  is considered an outlier worth inspection. RMSZ is the root-mean-square of all Z scores of the bond lengths (or angles).

Mol	Type	Chain	Res	Link	Bond lengths			Bond angles		
					Counts	RMSZ	$\# Z  > 2$	Counts	RMSZ	$\# Z  > 2$
3	MGU	H	301	-	38,38,38	0.95	2 (5%)	53,53,53	3.51	24 (45%)

In the following table, the Chirals column lists the number of chiral outliers, the number of chiral centers analysed, the number of these observed in the model and the number defined in the chemical component dictionary. Similar counts are reported in the Torsion and Rings columns. '-' means no outliers of that kind were identified.

Mol	Type	Chain	Res	Link	Chirals	Torsions	Rings
3	MGU	H	301	-	-	0/30/70/70	0/2/2/2

All (2) bond length outliers are listed below:

Mol	Chain	Res	Type	Atoms	Z	Observed(Å)	Ideal(Å)
3	H	301	MGU	C4-N4	3.43	1.51	1.45
3	H	301	MGU	C24-N24	2.40	1.50	1.45

The worst 5 of 24 bond angle outliers are listed below:

Mol	Chain	Res	Type	Atoms	Z	Observed(°)	Ideal(°)
3	H	301	MGU	C10-C9-N4	11.53	140.01	116.43
3	H	301	MGU	C4-N4-C9	-9.47	108.78	123.07
3	H	301	MGU	O9-C9-N4	-8.87	105.85	122.93
3	H	301	MGU	C24-N24-C29	-8.25	110.63	123.07
3	H	301	MGU	C21-O25-C25	-5.26	104.80	113.55

There are no chirality outliers.

There are no torsion outliers.

There are no ring outliers.

## 5.7 Other polymers ⓘ

There are no such residues in this entry.

## 5.8 Polymer linkage issues

There are no chain breaks in this entry.

## 6 Fit of model and data ⓘ

### 6.1 Protein, DNA and RNA chains ⓘ

EDS was not executed - this section will therefore be empty.

### 6.2 Non-standard residues in protein, DNA, RNA chains ⓘ

EDS was not executed - this section will therefore be empty.

### 6.3 Carbohydrates ⓘ

EDS was not executed - this section will therefore be empty.

### 6.4 Ligands ⓘ

EDS was not executed - this section will therefore be empty.

### 6.5 Other polymers ⓘ

EDS was not executed - this section will therefore be empty.