



# Full wwPDB X-ray Structure Validation Report ⓘ

Feb 28, 2014 – 02:26 AM GMT

PDB ID : 2F43  
Title : Rat liver F1-ATPase  
Authors : Chen, C.; Saxena, A.K.; Simcoke, W.N.; Garboczi, D.N.; Pedersen, P.L.; Ko, Y.H.  
Deposited on : 2005-11-22  
Resolution : 3.00 Å(reported)

This is a full wwPDB validation report for a publicly released PDB entry.  
We welcome your comments at [validation@mail.wwpdb.org](mailto:validation@mail.wwpdb.org)  
A user guide is available at <http://wwpdb.org/ValidationPDFNotes.html>

---

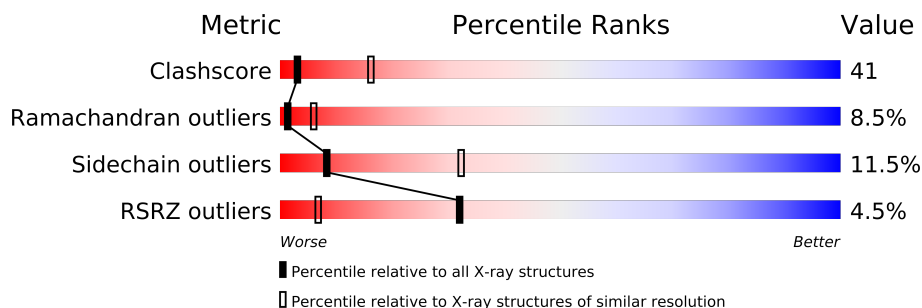
The following versions of software and data (see [references](#)) were used in the production of this report:

MolProbity : 4.02b-467  
Mogul : 1.15 2013  
Xtriage (Phenix) : dev-1323  
EDS : stable22639  
Percentile statistics : 21963  
Refmac : 5.8.0049  
CCP4 : 6.3.0 (Settle)  
Ideal geometry (proteins) : Engh & Huber (2001)  
Ideal geometry (DNA, RNA) : Parkinson et. al. (1996)  
Validation Pipeline (wwPDB-VP) : stable22683

# 1 Overall quality at a glance

The reported resolution of this entry is 3.00 Å.

Percentile scores (ranging between 0-100) for global validation metrics of the entry are shown in the following graphic. The table shows the number of entries on which the scores are based.



Metric	Whole archive (#Entries)	Similar resolution (#Entries, resolution range(Å))
Clashscore	79885	1594 (3.00-3.00)
Ramachandran outliers	78287	1537 (3.00-3.00)
Sidechain outliers	78261	1540 (3.00-3.00)
RSRZ outliers	66119	1217 (3.00-3.00)

The table below summarises the geometric issues observed across the polymeric chains and their fit to the electron density. The red, orange, yellow and green segments on the lower bar indicate the fraction of residues that contain outliers for  $\geq 3$ , 2, 1 and 0 types of geometric quality criteria. The upper red bar (where present) indicates the fraction of residues that have poor fit to the electron density.

Mol	Chain	Length	Quality of chain
1	A	510	
2	B	479	
3	G	273	

The following table lists non-polymeric compounds that are outliers for geometric or electron-density-fit criteria:

Mol	Type	Chain	Res	Geometry	Electron density
4	VO4	B	601	-	X
5	MG	A	602	-	X

## 2 Entry composition

There are 7 unique types of molecules in this entry. The entry contains 8234 atoms, of which 0 are hydrogen and 0 are deuterium.

In the tables below, the ZeroOcc column contains the number of atoms modelled with zero occupancy, the AltConf column contains the number of residues with at least one atom in alternate conformation and the Trace column contains the number of residues modelled with at most 2 atoms.

- Molecule 1 is a protein called ATP synthase alpha chain, mitochondrial.

Mol	Chain	Residues	Atoms					ZeroOcc	AltConf	Trace
1	A	480	Total	C	N	O	S	0	13	0
			3659	2301	648	698	12			

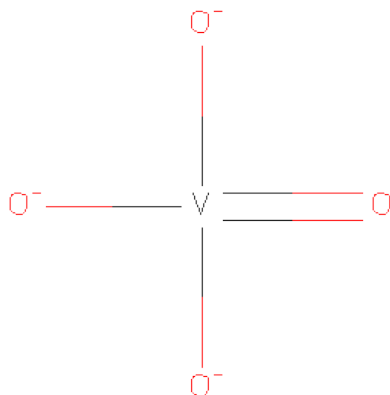
- Molecule 2 is a protein called ATP synthase beta chain, mitochondrial.

Mol	Chain	Residues	Atoms					ZeroOcc	AltConf	Trace
2	B	471	Total	C	N	O	S	0	20	0
			3556	2253	603	688	12			

- Molecule 3 is a protein called ATP synthase gamma chain, mitochondrial.

Mol	Chain	Residues	Atoms					ZeroOcc	AltConf	Trace
3	G	124	Total	C	N	O	S	0	0	0
			954	592	173	182	7			

- Molecule 4 is VANADATE ION (three-letter code: VO4) (formula: O<sub>4</sub>V).

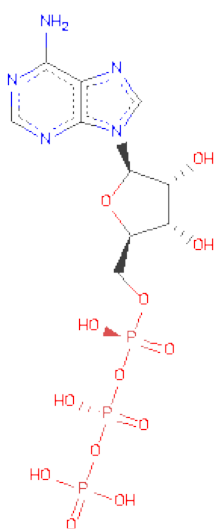


Mol	Chain	Residues	Atoms			ZeroOcc	AltConf
4	B	1	Total	O	V	0	0
			5	4	1		

- Molecule 5 is MAGNESIUM ION (three-letter code: MG) (formula: Mg).

Mol	Chain	Residues	Atoms		ZeroOcc	AltConf
5	B	1	Total	Mg	0	0
			1	1		
5	A	1	Total	Mg	0	0
			1	1		

- Molecule 6 is ADENOSINE-5'-TRIPHOSPHATE (three-letter code: ATP) (formula:  $C_{10}H_{16}N_5O_{13}P_3$ ).



Mol	Chain	Residues	Atoms				ZeroOcc	AltConf
6	A	1	Total	C	N	O	P	
			31	10	5	13	3	0

- Molecule 7 is ADENOSINE-5'-DIPHOSPHATE (three-letter code: ADP) (formula:  $C_{10}H_{15}N_5O_{10}P_2$ ).



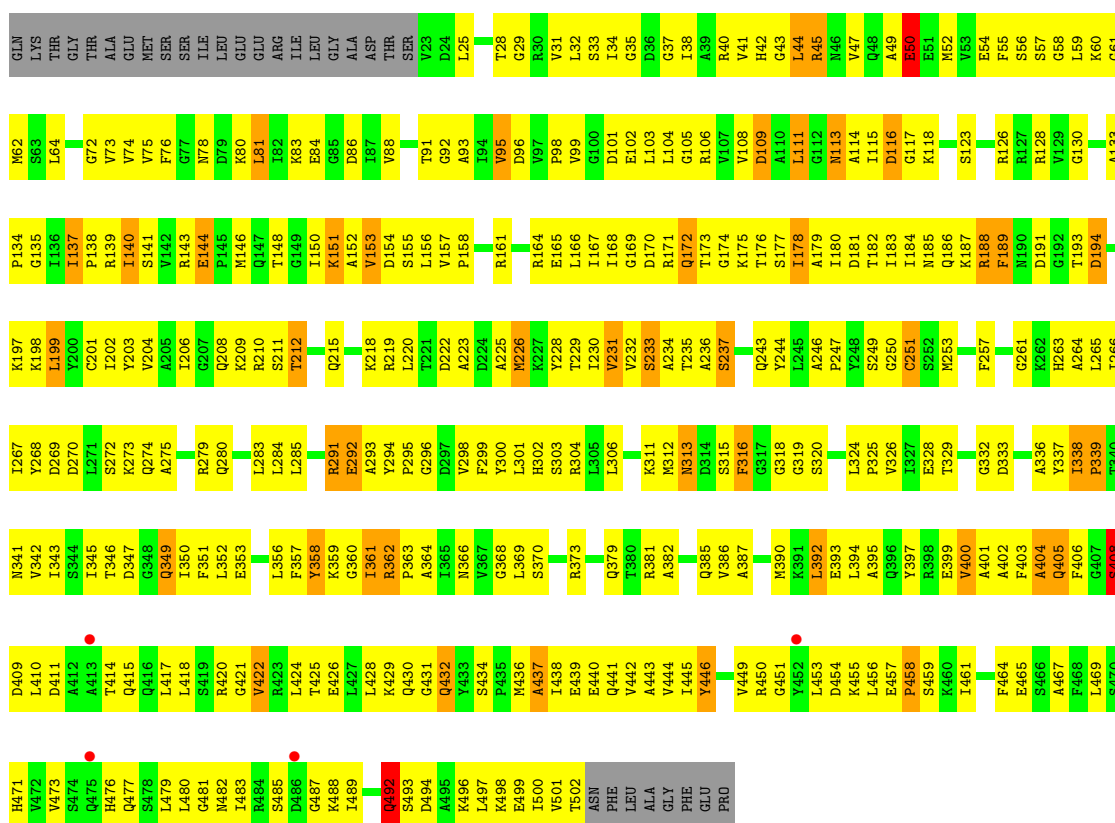
Mol	Chain	Residues	Atoms					ZeroOcc	AltConf
			Total	C	N	O	P		
7	B	1	27	10	5	10	2	0	0

### 3 Residue-property plots

These plots are drawn for all protein, RNA and DNA chains in the entry. The first graphic for a chain summarises the proportions of errors displayed in the second graphic. The second graphic shows the sequence view annotated by issues in geometry and electron density. Residues are color-coded according to the number of geometric quality criteria for which they contain at least one outlier: green = 0, yellow = 1, orange = 2 and red = 3 or more. A red dot above a residue indicates a poor fit to the electron density ( $RSRZ > 2$ ). Stretches of 2 or more consecutive residues without any outlier are shown as a green connector. Residues present in the sample, but not in the model, are shown in grey.

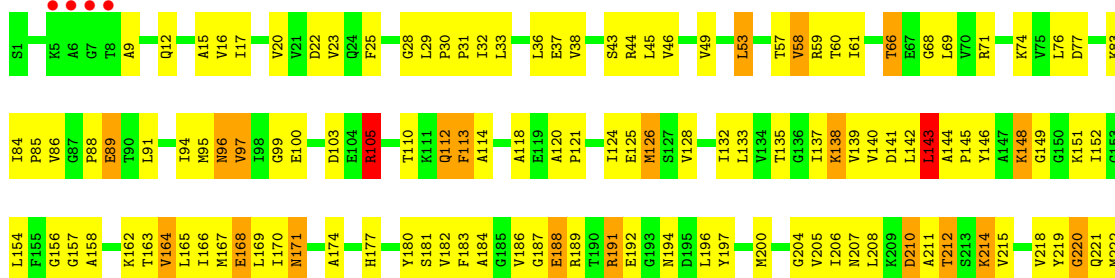
- Molecule 1: ATP synthase alpha chain, mitochondrial

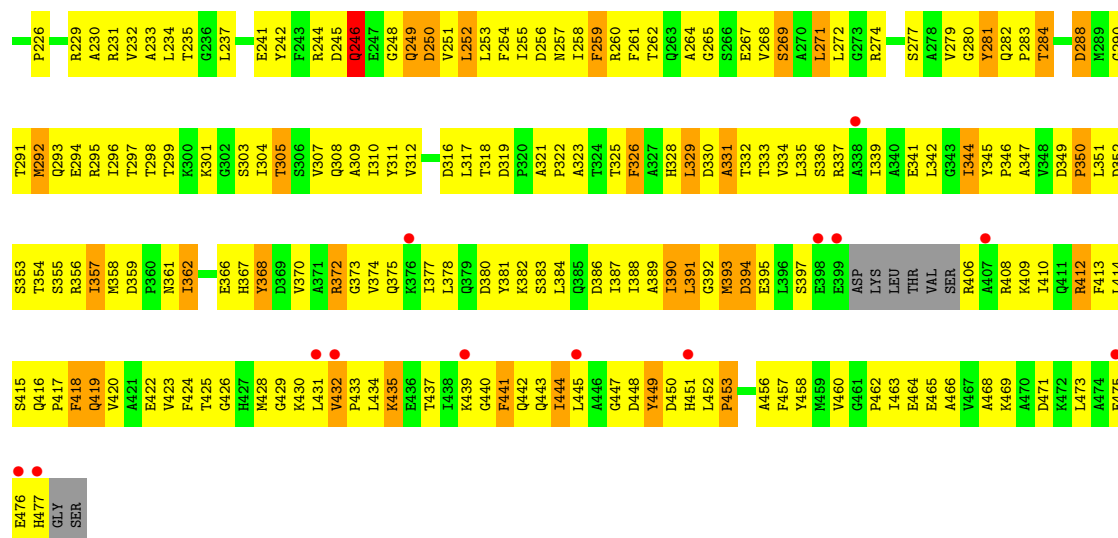
Chain A: 



- Molecule 2: ATP synthase beta chain, mitochondrial

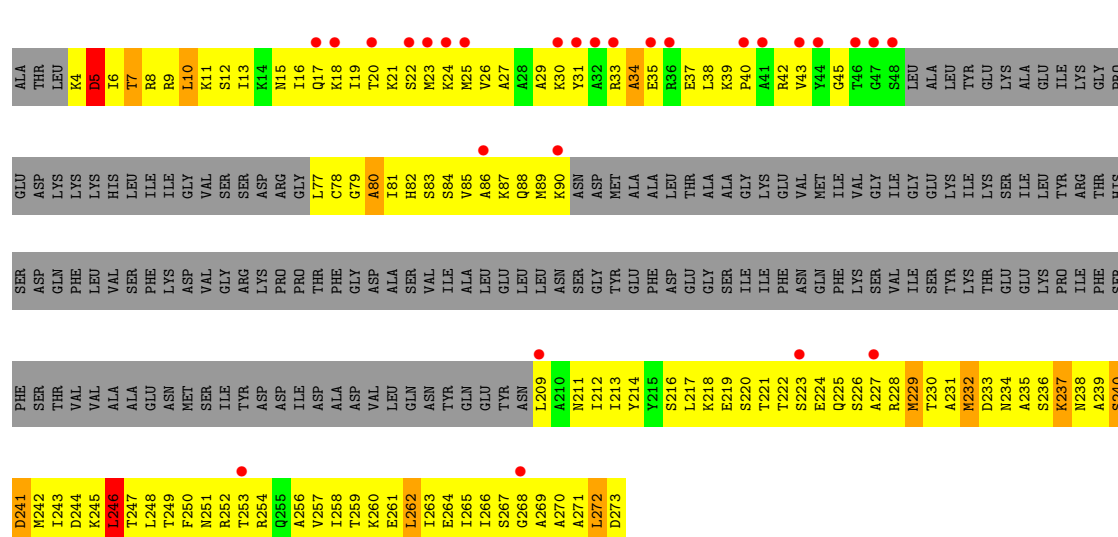
Chain B: 





• Molecule 3: ATP synthase gamma chain, mitochondrial

Chain G:



## 4 Data and refinement statistics

Property	Value	Source
Space group	H 3 2	Depositor
Cell constants a, b, c, $\alpha$ , $\beta$ , $\gamma$	144.57Å 144.57Å 362.98Å 90.00° 90.00° 120.00°	Depositor
Resolution (Å)	19.97 – 3.00 19.82 – 2.99	Depositor EDS
% Data completeness (in resolution range)	99.9 (19.97-3.00) 96.0 (19.82-2.99)	Depositor EDS
$R_{merge}$	(Not available)	Depositor
$R_{sym}$	0.14	Depositor
$\langle I/\sigma(I) \rangle$ <sup>1</sup>	3.49 (at 2.98Å)	Xtriage
Refinement program	CNS 1.1	Depositor
R, $R_{free}$	0.306 , 0.320 0.309 , (Not available)	Depositor DCC
$R_{free}$ test set	No test flags present.	DCC
Wilson B-factor (Å <sup>2</sup> )	65.1	Xtriage
Anisotropy	0.460	Xtriage
Bulk solvent $k_{sol}$ (e/Å <sup>3</sup> ), $B_{sol}$ (Å <sup>2</sup> )	0.27 , 63.7	EDS
Estimated twinning fraction	0.016 for $-1/3^*h+1/3^*k+1/3^*l, -k, 8/3^*h+4/3^*k+1/3^*l$ 0.021 for $-2/3^*h-1/3^*k-1/3^*l, -1/3^*h-2/3^*k+1/3^*l, -4/3^*h+4/3^*k+1/3^*l$ 0.022 for $-h, 1/3^*h-1/3^*k-1/3^*l, -4/3^*h-8/3^*k+1/3^*l$	Xtriage
L-test for twinning	$\langle  L  \rangle = 0.48$ , $\langle L^2 \rangle = 0.31$	Xtriage
Outliers	0 of 29849 reflections	Xtriage
$F_o, F_c$ correlation	0.85	EDS
Total number of atoms	8234	wwPDB-VP
Average B, all atoms (Å <sup>2</sup> )	67.0	wwPDB-VP

Xtriage's analysis on translational NCS is as follows: *The largest off-origin peak in the Patterson function is 4.13% of the height of the origin peak. No significant pseudotranslation is detected.*

<sup>1</sup>Intensities estimated from amplitudes.



## 5 Model quality ⓘ

### 5.1 Standard geometry ⓘ

Bond lengths and bond angles in the following residue types are not validated in this section: VO4, MG, ATP, ADP

The Z score for a bond length (or angle) is the number of standard deviations the observed value is removed from the expected value. A bond length (or angle) with  $|Z| > 5$  is considered an outlier worth inspection. RMSZ is the root-mean-square of all Z scores of the bond lengths (or angles).

Mol	Chain	Bond lengths		Bond angles	
		RMSZ	$\# Z  > 5$	RMSZ	$\# Z  > 5$
1	A	0.89	0/3708	1.03	2/5003 (0.0%)
2	B	0.90	0/3615	1.01	4/4903 (0.1%)
3	G	0.62	0/958	0.87	1/1276 (0.1%)
All	All	0.87	0/8281	1.01	7/11182 (0.1%)

There are no bond length outliers.

All (7) bond angle outliers are listed below:

Mol	Chain	Res	Type	Atoms	Z	Observed(°)	Ideal(°)
3	G	246	LEU	CA-CB-CG	8.23	134.23	115.30
1	A	210	ARG	NE-CZ-NH1	-6.19	117.20	120.30
2	B	191	ARG	NE-CZ-NH2	-6.12	117.24	120.30
1	A	61	GLY	N-CA-C	-5.96	98.19	113.10
2	B	244	ARG	NE-CZ-NH1	5.32	122.96	120.30
2	B	220	GLY	N-CA-C	-5.20	100.09	113.10
2	B	274	ARG	NE-CZ-NH2	-5.20	117.70	120.30

There are no chirality outliers.

There are no planarity outliers.

### 5.2 Close contacts ⓘ

In the following table, the Non-H and H(model) columns list the number of non-hydrogen atoms and hydrogen atoms in the chain respectively. The H(added) column lists the number of hydrogens added by MolProbity. The Clashes column lists the number of clashes within the asymmetric unit, and the number in parentheses is this value normalized per 1000 atoms of the molecule in the chain. The Symm-Clashes column gives symmetry related clashes, in the same way as for the Clashes column.

Mol	Chain	Non-H	H(model)	H(added)	Clashes	Symm-Clashes
1	A	3659	0	3761	330	22
2	B	3556	0	3600	305	129
3	G	954	0	1013	68	539
4	B	5	0	0	1	0
5	A	1	0	0	0	0
5	B	1	0	0	0	0
6	A	31	0	12	3	0
7	B	27	0	12	3	0
All	All	8234	0	8398	688	539

Clashscore is defined as the number of clashes calculated for the entry per 1000 atoms (including hydrogens) of the entry. The overall clashscore for this entry is 41.

All (688) close contacts within the same asymmetric unit are listed below.

Atom-1	Atom-2	Distance(Å)	Clash(Å)
3:G:233:ASP:O	3:G:237:LYS:HD3	1.58	1.03
2:B:137:ILE:HG23	2:B:416:GLN:HE22	1.23	1.01
1:A:137:ILE:H	1:A:137:ILE:HD13	1.24	1.00
2:B:271:LEU:HD23	2:B:271:LEU:H	1.31	0.95
3:G:233:ASP:OD2	3:G:237:LYS:NZ	2.04	0.90
2:B:158:ALA:HB2	2:B:311:TYR:HE1	1.37	0.90
2:B:310:ILE:HG12	2:B:325:THR:HG21	1.55	0.87
1:A:270:ASP:H	1:A:326:VAL:HB	1.39	0.87
2:B:326:PHE:HA	2:B:329:LEU:HD21	1.58	0.86
1:A:148:THR:HA	1:A:182:THR:HG23	1.57	0.86
2:B:137:ILE:HG23	2:B:416:GLN:NE2	1.89	0.85
2:B:167:MET:HA	2:B:170:ILE:HD12	1.59	0.84
2:B:166:ILE:HA	2:B:169:LEU:HD12	1.58	0.84
1:A:96:ASP:HA	1:A:128:ARG:HA	1.57	0.84
2:B:38:VAL:HG21	2:B:45:LEU:HD23	1.62	0.81
1:A:283:LEU:HD12	2:B:283:PRO:HB3	1.60	0.81
1:A:476:HIS:HB3	1:A:479:LEU:HD13	1.62	0.81
2:B:156:GLY:H	2:B:162:LYS:HE3	1.46	0.81
1:A:386:VAL:HG11	1:A:446:TYR:HB2	1.63	0.81
1:A:59:LEU:HD11	1:A:76:PHE:O	1.82	0.79
3:G:240:SER:O	3:G:243:ILE:N	2.13	0.79
1:A:175:LYS:HG2	1:A:352:LEU:HD12	1.63	0.79
2:B:37:GLU:HB2	2:B:76:LEU:HB3	1.64	0.78
1:A:140:ILE:HG23	1:A:141:SER:H	1.48	0.78
2:B:142:LEU:HG	2:B:367:HIS:NE2	1.99	0.77
2:B:86:VAL:HG23	2:B:112:GLN:HE21	1.48	0.77
1:A:137:ILE:CD1	1:A:137:ILE:H	1.97	0.77
2:B:408:ARG:HD2	2:B:412:ARG:HH22	1.49	0.77

*Continued on next page...*

*Continued from previous page...*

Atom-1	Atom-2	Distance(Å)	Clash(Å)
2:B:133:LEU:HD13	2:B:148:LYS:HE3	1.66	0.76
2:B:105:ARG:HH21	2:B:208:LEU:HB3	1.50	0.76
1:A:148:THR:HG21	1:A:153:VAL:HG11	1.65	0.76
1:A:397:TYR:HE1	1:A:418:LEU:HA	1.51	0.76
2:B:390[A]:ILE:HD12	3:G:77:LEU:HD21	1.68	0.76
2:B:317:LEU:HD11	2:B:334:VAL:HG11	1.68	0.75
2:B:259:PHE:CE1	2:B:311:TYR:HB3	2.20	0.75
2:B:200:MET:SD	2:B:215:VAL:HG21	2.27	0.75
2:B:299:THR:HG23	2:B:301:LYS:H	1.51	0.74
1:A:49:ALA:O	1:A:50:GLU:HB2	1.85	0.74
1:A:301:LEU:HA	1:A:304:ARG:HH21	1.52	0.74
2:B:368:TYR:O	2:B:372:ARG:HG2	1.88	0.74
2:B:157:GLY:HA2	2:B:312:VAL:HB	1.69	0.74
2:B:66:THR:HG22	2:B:69:LEU:HD12	1.67	0.74
1:A:394:LEU:HA	1:A:397:TYR:HB3	1.70	0.74
2:B:9:ALA:HB1	2:B:77:ASP:HB3	1.70	0.74
3:G:232:MET:SD	3:G:232:MET:N	2.61	0.73
3:G:248:LEU:O	3:G:252:ARG:NH1	2.21	0.73
3:G:250:PHE:O	3:G:254:ARG:N	2.20	0.73
1:A:403[A]:PHE:O	1:A:406[A]:PHE:CD1	2.41	0.73
2:B:158:ALA:HB2	2:B:311:TYR:CE1	2.22	0.73
1:A:184:ILE:HD11	1:A:223:ALA:HB3	1.70	0.73
3:G:249:THR:O	3:G:252:ARG:HB2	1.89	0.72
1:A:444:VAL:HG11	1:A:465:GLU:HG3	1.70	0.72
1:A:98:PRO:HG3	1:A:126:ARG:NE	2.04	0.72
1:A:34:ILE:HD12	1:A:35:GLY:H	1.53	0.72
1:A:137:ILE:N	1:A:137:ILE:HD13	2.04	0.71
2:B:339:ILE:HG23	2:B:344:ILE:HB	1.72	0.71
1:A:148:THR:HB	1:A:150:ILE:HD13	1.72	0.71
1:A:381:ARG:HD2	1:A:381:ARG:H	1.53	0.71
1:A:279:ARG:O	1:A:283:LEU:HG	1.90	0.71
2:B:189:ARG:HB2	2:B:192:GLU:HG2	1.71	0.71
1:A:403[A]:PHE:HA	1:A:406[A]:PHE:HE1	1.54	0.71
2:B:133:LEU:HB2	2:B:148:LYS:HD2	1.70	0.70
1:A:471:HIS:HE1	1:A:500:ILE:HD11	1.55	0.70
1:A:62:MET:SD	1:A:95:VAL:HG21	2.32	0.70
2:B:387[A]:ILE:HG22	2:B:388[A]:ILE:HG13	1.71	0.70
1:A:403[A]:PHE:HA	1:A:406[A]:PHE:CE1	2.27	0.70
2:B:406:ARG:O	2:B:409:LYS:HB2	1.92	0.69
2:B:430:LYS:HE3	2:B:460:VAL:HG12	1.74	0.69
2:B:265:GLY:HA2	2:B:268:VAL:HG12	1.75	0.69
1:A:150:ILE:HG23	1:A:430:GLN:HG2	1.74	0.69

*Continued on next page...*

*Continued from previous page...*

Atom-1	Atom-2	Distance(Å)	Clash(Å)
2:B:410:ILE:HG13	2:B:444:ILE:HG21	1.74	0.69
1:A:203:TYR:HB3	1:A:231:VAL:HG13	1.73	0.69
1:A:299:PHE:HA	1:A:341:ASN:HD21	1.57	0.68
2:B:339:ILE:HD13	2:B:342:LEU:HD12	1.74	0.68
1:A:209:LYS:HD2	2:B:328:HIS:HA	1.75	0.68
1:A:410[A]:LEU:HD22	1:A:411[A]:ASP:H	1.57	0.68
2:B:96:ASN:HD21	2:B:100:GLU:H	1.41	0.68
3:G:38:LEU:HD13	3:G:218:LYS:HB3	1.76	0.68
2:B:138:LYS:HG3	2:B:414:LEU:HA	1.75	0.68
1:A:158:PRO:HG2	1:A:379:GLN:HB3	1.76	0.68
1:A:209:LYS:HE3	2:B:356:ARG:HH22	1.59	0.68
1:A:32:LEU:HG	1:A:42:HIS:HB2	1.76	0.67
2:B:20:VAL:CG1	2:B:59:ARG:HD2	2.23	0.67
2:B:378:LEU:O	2:B:381[A]:TYR:HB3	1.94	0.67
1:A:108:VAL:HG12	1:A:114:ALA:HA	1.75	0.67
2:B:390[A]:ILE:CD1	3:G:77:LEU:HD21	2.25	0.67
1:A:218:LYS:HD2	2:B:128:VAL:HG11	1.76	0.67
2:B:418:PHE:HA	2:B:430:LYS:H	1.60	0.67
1:A:137:ILE:HG12	1:A:138:PRO:HD3	1.77	0.67
1:A:38:ILE:HG13	1:A:284:LEU:HB3	1.77	0.67
2:B:186:VAL:HG21	2:B:233:ALA:HB2	1.76	0.66
2:B:96:ASN:ND2	2:B:100:GLU:H	1.94	0.66
3:G:233:ASP:CG	3:G:237:LYS:NZ	2.49	0.66
3:G:27:ALA:HB1	3:G:229:MET:HA	1.77	0.66
1:A:488:LYS:HG2	1:A:489:ILE:H	1.60	0.66
2:B:32:ILE:HG22	2:B:33:LEU:HG	1.78	0.66
2:B:257:ASN:H	2:B:309:ALA:HB3	1.61	0.66
1:A:303:SER:HA	1:A:345:ILE:HD13	1.78	0.65
2:B:44:ARG:HG2	2:B:44:ARG:HH11	1.62	0.65
2:B:187:GLY:O	2:B:222:MET:HG3	1.96	0.65
1:A:52:MET:HA	1:A:62:MET:HA	1.79	0.65
2:B:139:VAL:CG2	2:B:414:LEU:HB3	2.27	0.65
2:B:25:PHE:HB2	2:B:29:LEU:HD22	1.79	0.65
1:A:156:LEU:O	1:A:158:PRO:HD3	1.96	0.65
3:G:250:PHE:CE1	3:G:254:ARG:HD2	2.31	0.64
2:B:145:PRO:HG2	2:B:357:ILE:HG23	1.78	0.64
1:A:167:ILE:HG22	1:A:350:ILE:HB	1.79	0.64
1:A:181:ASP:O	1:A:184:ILE:HG22	1.99	0.63
2:B:345:TYR:HA	2:B:346:PRO:C	2.18	0.63
1:A:337:TYR:O	1:A:338:ILE:HB	1.96	0.63
1:A:458:PRO:HA	1:A:461:ILE:HD11	1.81	0.63
1:A:361:ILE:O	1:A:364:ALA:HB2	1.98	0.63

*Continued on next page...*

*Continued from previous page...*

Atom-1	Atom-2	Distance(Å)	Clash(Å)
1:A:397:TYR:HA	1:A:400[A]:VAL:CG2	2.28	0.63
1:A:356:LEU:HD12	1:A:364:ALA:HB1	1.79	0.63
2:B:142:LEU:HD11	2:B:441:PHE:HE2	1.63	0.63
1:A:385:GLN:HG2	1:A:489:ILE:HD12	1.81	0.63
2:B:378:LEU:O	2:B:382[A]:LYS:HG2	1.99	0.63
1:A:403[A]:PHE:O	1:A:405[A]:GLN:N	2.32	0.62
2:B:432:VAL:HG11	2:B:435:LYS:HD2	1.81	0.62
1:A:165:GLU:O	1:A:324:LEU:HA	1.98	0.62
1:A:265:LEU:HD11	1:A:324:LEU:HD11	1.80	0.62
3:G:213:ILE:HG13	3:G:213:ILE:O	2.00	0.62
1:A:425:THR:O	1:A:429:LYS:HG3	2.00	0.62
1:A:477:GLN:HE21	1:A:477:GLN:HA	1.65	0.62
1:A:279:ARG:HD2	1:A:293:ALA:HB3	1.81	0.62
2:B:374:VAL:HG23	2:B:445:LEU:HD11	1.81	0.61
2:B:135:THR:OG1	2:B:141:ASP:HB2	2.00	0.61
3:G:250:PHE:CD1	3:G:254:ARG:HD2	2.36	0.61
1:A:471:HIS:CE1	1:A:500:ILE:HD11	2.34	0.61
2:B:346:PRO:HD3	2:B:418:PHE:HE2	1.65	0.61
1:A:106:ARG:CZ	1:A:118:LYS:HB2	2.31	0.61
2:B:253:LEU:HG	2:B:255:ILE:HD11	1.83	0.60
2:B:118:ALA:HB3	2:B:295:ARG:NH2	2.15	0.60
1:A:313:ASN:HD22	1:A:316:PHE:HB2	1.66	0.60
2:B:408:ARG:HD2	2:B:412:ARG:NH2	2.17	0.60
1:A:103:LEU:O	1:A:230:ILE:HG12	2.01	0.60
2:B:441:PHE:HD1	2:B:442:GLN:H	1.48	0.60
2:B:139:VAL:HG22	2:B:414:LEU:HB3	1.82	0.60
1:A:356:LEU:O	1:A:359:LYS:HG3	2.02	0.60
2:B:255:ILE:HD13	2:B:308:GLN:HG2	1.82	0.60
2:B:298:THR:HG23	2:B:303:SER:HB2	1.82	0.60
2:B:321:ALA:HB3	2:B:322:PRO:HD3	1.83	0.60
1:A:386:VAL:HG23	1:A:387:ALA:H	1.66	0.60
2:B:252:LEU:HG	2:B:305:THR:O	2.02	0.60
1:A:106:ARG:O	1:A:231:VAL:HG23	2.02	0.60
3:G:27:ALA:O	3:G:229:MET:SD	2.60	0.60
2:B:16:VAL:O	2:B:17:ILE:HG13	2.02	0.60
1:A:141:SER:HB3	1:A:143:ARG:NH2	2.17	0.59
2:B:226:PRO:N	2:B:229:ARG:HH21	2.00	0.59
2:B:156:GLY:N	2:B:162:LYS:HE3	2.15	0.59
2:B:319:ASP:HB3	2:B:322:PRO:CD	2.32	0.59
2:B:36:LEU:O	2:B:46:VAL:HA	2.02	0.59
2:B:262:THR:HG23	2:B:282:GLN:NE2	2.16	0.59
2:B:181:SER:O	2:B:215:VAL:HA	2.03	0.59

*Continued on next page...*

*Continued from previous page...*

Atom-1	Atom-2	Distance(Å)	Clash(Å)
2:B:180:TYR:HB2	2:B:249:GLN:NE2	2.17	0.59
1:A:393:GLU:O	1:A:397:TYR:HB2	2.03	0.59
2:B:29:LEU:HD13	2:B:30:PRO:HD2	1.84	0.59
2:B:167:MET:O	2:B:170:ILE:HB	2.03	0.59
2:B:132:ILE:HG13	2:B:133:LEU:N	2.18	0.59
3:G:231:ALA:HB3	3:G:232:MET:SD	2.43	0.58
1:A:128:ARG:HG2	1:A:130:GLY:H	1.69	0.58
2:B:406:ARG:HD2	2:B:444:ILE:O	2.02	0.58
2:B:138:LYS:CB	2:B:414:LEU:HA	2.34	0.58
1:A:446:TYR:CE1	1:A:497:LEU:HD13	2.39	0.58
2:B:298:THR:HG22	2:B:299:THR:H	1.68	0.58
2:B:319:ASP:HB3	2:B:322:PRO:HD3	1.85	0.58
2:B:335:LEU:HB3	2:B:347:ALA:HB3	1.86	0.58
2:B:377:ILE:O	2:B:381[A]:TYR:HB2	2.03	0.58
1:A:113:ASN:H	1:A:113:ASN:ND2	1.99	0.58
1:A:424:LEU:HD21	1:A:445:ILE:HD11	1.85	0.58
2:B:133:LEU:HB2	2:B:148:LYS:CD	2.34	0.58
2:B:200:MET:HB3	2:B:206:ILE:HG13	1.86	0.57
2:B:186:VAL:HG22	2:B:232:VAL:HG13	1.85	0.57
1:A:99:VAL:HG23	1:A:253:MET:HA	1.85	0.57
3:G:231:ALA:O	3:G:235:ALA:HB3	2.04	0.57
2:B:149:GLY:H	2:B:305:THR:HG23	1.69	0.57
1:A:212:THR:O	1:A:215:GLN:HB2	2.04	0.57
1:A:294:TYR:HB3	1:A:298:VAL:HG21	1.86	0.57
2:B:242:TYR:HA	2:B:246:GLN:HE22	1.69	0.57
2:B:262:THR:HG23	2:B:282:GLN:HE21	1.69	0.57
3:G:249:THR:HA	3:G:252:ARG:HB2	1.85	0.57
1:A:203:TYR:HB3	1:A:231:VAL:CG1	2.33	0.57
3:G:21:LYS:O	3:G:24:LYS:HB3	2.04	0.57
2:B:162:LYS:HB2	2:B:162:LYS:HZ2	1.70	0.57
1:A:415:GLN:HA	1:A:418:LEU:HD12	1.86	0.57
4:B:601:VO4:O3	7:B:604:ADP:O1B	2.21	0.57
2:B:428:MET:O	2:B:430:LYS:N	2.38	0.57
1:A:150:ILE:HD11	1:A:181:ASP:HB2	1.86	0.57
1:A:184:ILE:HD11	1:A:223:ALA:CB	2.35	0.56
1:A:477:GLN:NE2	1:A:477:GLN:HA	2.20	0.56
2:B:253:LEU:HD12	2:B:254:PHE:N	2.20	0.56
1:A:215:GLN:O	1:A:219:ARG:HB2	2.05	0.56
2:B:85:PRO:HA	2:B:113:PHE:HA	1.88	0.56
1:A:154:ASP:O	1:A:158:PRO:HG3	2.06	0.56
1:A:62:MET:CE	1:A:95:VAL:HG21	2.36	0.56
1:A:211:SER:OG	2:B:126:MET:HG3	2.06	0.56

*Continued on next page...*

*Continued from previous page...*

Atom-1	Atom-2	Distance(Å)	Clash(Å)
2:B:465:GLU:HA	2:B:468:ALA:HB3	1.88	0.56
2:B:269:SER:O	2:B:272:LEU:HB2	2.05	0.56
1:A:399:GLU:HG2	1:A:403[A]:PHE:CE1	2.41	0.56
2:B:95:MET:SD	2:B:99:GLY:HA2	2.46	0.56
1:A:249:SER:O	1:A:253:MET:HG2	2.06	0.56
2:B:462:PRO:HB3	2:B:464:GLU:OE1	2.06	0.55
2:B:251:VAL:HG12	2:B:252:LEU:H	1.71	0.55
3:G:240:SER:O	3:G:241:ASP:C	2.43	0.55
1:A:381:ARG:CD	1:A:381:ARG:H	2.19	0.55
1:A:37:GLY:O	1:A:38:ILE:HD13	2.06	0.55
1:A:135:GLY:N	1:A:139:ARG:HH21	2.05	0.55
2:B:154:LEU:HD13	2:B:165:LEU:HD23	1.88	0.55
1:A:108:VAL:CG2	1:A:232:VAL:HG12	2.36	0.55
3:G:40:PRO:O	3:G:45:GLY:HA3	2.05	0.55
2:B:449:TYR:CG	2:B:463:ILE:HD11	2.42	0.55
2:B:126:MET:HA	2:B:126:MET:HE3	1.87	0.55
1:A:188:ARG:HG3	1:A:189:PHE:CD1	2.42	0.55
1:A:115:ILE:C	1:A:117:GLY:H	2.10	0.55
1:A:152:ALA:O	1:A:156:LEU:HB2	2.07	0.55
2:B:191:ARG:HH21	2:B:192:GLU:HB3	1.72	0.55
1:A:410[A]:LEU:CD2	1:A:411[A]:ASP:H	2.18	0.55
2:B:138:LYS:CG	2:B:414:LEU:HA	2.35	0.55
1:A:482:ASN:HA	1:A:485:SER:OG	2.07	0.55
3:G:24:LYS:HB2	3:G:232:MET:HB3	1.88	0.54
1:A:138:PRO:HA	1:A:316:PHE:HD2	1.72	0.54
1:A:338:ILE:HB	1:A:339:PRO:HD3	1.88	0.54
1:A:168:ILE:HG12	1:A:329:THR:OG1	2.07	0.54
2:B:346:PRO:HD3	2:B:418:PHE:CE2	2.42	0.54
1:A:446:TYR:O	1:A:449:VAL:HG12	2.06	0.54
1:A:244:TYR:O	1:A:247:PRO:HD2	2.06	0.54
2:B:140:VAL:HG13	2:B:146:TYR:CZ	2.41	0.54
1:A:106:ARG:NH2	1:A:116:ASP:OD1	2.39	0.54
2:B:105:ARG:HE	2:B:208:LEU:HD22	1.73	0.54
1:A:151:LYS:HE3	1:A:436:MET:HG3	1.89	0.54
2:B:375:GLN:HA	2:B:378:LEU:HB2	1.89	0.54
1:A:183:ILE:HG23	1:A:201:CYS:SG	2.47	0.54
1:A:461:ILE:HA	1:A:464:PHE:CD2	2.43	0.54
3:G:258:ILE:O	3:G:262:LEU:HB2	2.07	0.54
1:A:483:ILE:O	1:A:487:GLY:HA2	2.08	0.54
1:A:183:ILE:HG12	1:A:265:LEU:HD23	1.90	0.54
1:A:146:MET:HG3	1:A:199:LEU:HD22	1.89	0.54
2:B:246:GLN:NE2	2:B:246:GLN:H	2.06	0.54

*Continued on next page...*



*Continued from previous page...*

Atom-1	Atom-2	Distance(Å)	Clash(Å)
1:A:144:GLU:O	1:A:144:GLU:HG2	2.08	0.54
1:A:385:GLN:OE1	1:A:488:LYS:HG2	2.07	0.54
2:B:441:PHE:HD1	2:B:442:GLN:N	2.06	0.54
1:A:360:GLY:O	1:A:362:ARG:HG2	2.08	0.54
1:A:399:GLU:O	1:A:403[A]:PHE:CD1	2.61	0.54
1:A:139:ARG:HA	1:A:311:LYS:O	2.08	0.54
1:A:338:ILE:O	1:A:342:VAL:HG23	2.07	0.54
1:A:105:GLY:HA2	1:A:226:MET:O	2.08	0.54
2:B:138:LYS:HD2	2:B:414:LEU:HD23	1.89	0.53
1:A:31:VAL:HG23	1:A:86:ASP:O	2.07	0.53
2:B:476:GLU:O	2:B:477:HIS:HB2	2.08	0.53
1:A:176:THR:O	1:A:180:ILE:HB	2.07	0.53
1:A:399:GLU:O	1:A:403[A]:PHE:HD1	1.90	0.53
2:B:293:GLN:NE2	2:B:308:GLN:HE22	2.07	0.53
2:B:406:ARG:HD3	2:B:450:ASP:CG	2.28	0.53
1:A:218:LYS:HD3	1:A:219:ARG:N	2.23	0.53
1:A:267:ILE:HD13	1:A:324:LEU:HD13	1.90	0.53
1:A:438:ILE:O	1:A:442:VAL:HG23	2.08	0.53
3:G:253:THR:HA	3:G:256:ALA:HB3	1.91	0.53
1:A:417:LEU:O	1:A:420:ARG:HG2	2.08	0.53
1:A:184:ILE:HD12	1:A:225:ALA:HB2	1.91	0.53
2:B:406:ARG:CZ	2:B:447:GLY:HA2	2.38	0.53
1:A:62:MET:SD	1:A:64:LEU:HD11	2.49	0.53
2:B:257:ASN:HA	2:B:309:ALA:O	2.09	0.53
1:A:175:LYS:CG	1:A:352:LEU:HD12	2.37	0.53
1:A:91:THR:O	1:A:93:ALA:N	2.42	0.53
2:B:255:ILE:HG21	2:B:258:ILE:HB	1.90	0.53
1:A:180:ILE:HG13	1:A:220:LEU:HD21	1.91	0.53
2:B:166:ILE:HG12	2:B:254:PHE:HD2	1.73	0.52
2:B:469:LYS:O	2:B:469:LYS:HD3	2.09	0.52
1:A:55:PHE:CE2	1:A:75:VAL:HG22	2.43	0.52
3:G:30:LYS:HE2	3:G:225:GLN:OE1	2.08	0.52
1:A:174:GLY:O	1:A:178:ILE:HG22	2.09	0.52
1:A:313:ASN:HD21	1:A:315:SER:HB2	1.74	0.52
1:A:209:LYS:HD3	2:B:356:ARG:HH12	1.73	0.52
1:A:477:GLN:CA	1:A:477:GLN:HE21	2.21	0.52
3:G:4:LYS:O	3:G:5:ASP:HB3	2.08	0.52
2:B:452:LEU:HD22	2:B:466:ALA:HB1	1.90	0.52
2:B:120:ALA:HB1	2:B:294:GLU:O	2.10	0.52
2:B:212:THR:HG22	2:B:214:LYS:NZ	2.24	0.52
2:B:38:VAL:HG21	2:B:45:LEU:CD2	2.37	0.52
2:B:372:ARG:HE	2:B:372:ARG:HA	1.75	0.52

*Continued on next page...*



*Continued from previous page...*

Atom-1	Atom-2	Distance(Å)	Clash(Å)
1:A:265:LEU:HD11	1:A:324:LEU:CD1	2.40	0.52
2:B:242:TYR:HA	2:B:246:GLN:NE2	2.25	0.52
1:A:467:ALA:O	1:A:471:HIS:HB2	2.09	0.52
1:A:294:TYR:O	1:A:296:GLY:N	2.34	0.52
2:B:439:LYS:O	2:B:443:GLN:HG2	2.10	0.52
3:G:233:ASP:O	3:G:237:LYS:CD	2.45	0.51
1:A:431:GLY:CA	6:A:603:ATP:HN62	2.23	0.51
2:B:138:LYS:HB3	2:B:414:LEU:HD23	1.91	0.51
3:G:248:LEU:HG	3:G:252:ARG:HH12	1.75	0.51
1:A:440:GLU:O	1:A:443:ALA:HB3	2.10	0.51
2:B:158:ALA:CB	2:B:311:TYR:HE1	2.17	0.51
1:A:386:VAL:HG12	1:A:450:ARG:NH2	2.25	0.51
2:B:434:LEU:O	2:B:437:THR:HG23	2.10	0.51
3:G:249:THR:O	3:G:253:THR:N	2.39	0.51
2:B:43:SER:OG	2:B:44:ARG:N	2.42	0.51
1:A:386:VAL:HG13	1:A:489:ILE:HD11	1.91	0.51
1:A:362:ARG:HH12	2:B:372:ARG:CD	2.23	0.51
2:B:271:LEU:CD2	2:B:271:LEU:H	2.07	0.51
1:A:64:LEU:HD22	1:A:74:VAL:HG11	1.93	0.51
1:A:343:ILE:HD11	1:A:349:GLN:CD	2.31	0.51
1:A:362:ARG:HH12	2:B:372:ARG:HD2	1.74	0.51
2:B:94:ILE:HB	2:B:103:ASP:HB3	1.93	0.51
2:B:259:PHE:HZ	2:B:311:TYR:HD2	1.59	0.51
1:A:441:GLN:O	1:A:445:ILE:HG22	2.11	0.51
1:A:400[A]:VAL:HB	1:A:418:LEU:CD2	2.41	0.51
2:B:49:VAL:HA	2:B:60:THR:HG22	1.93	0.51
2:B:361:ASN:HB2	2:B:362:ILE:HD13	1.92	0.51
2:B:259:PHE:CZ	2:B:311:TYR:HD2	2.29	0.51
2:B:299:THR:HG23	2:B:301:LYS:N	2.23	0.51
2:B:180:TYR:HB2	2:B:249:GLN:HE22	1.75	0.51
1:A:294:TYR:HB3	1:A:298:VAL:CG2	2.41	0.51
2:B:89:GLU:HB2	2:B:110:THR:HG22	1.92	0.51
1:A:446:TYR:OH	1:A:494:ASP:HA	2.11	0.50
1:A:479:LEU:HD12	1:A:479:LEU:H	1.76	0.50
2:B:207:ASN:HD21	2:B:210:ASP:H	1.57	0.50
1:A:261:GLY:O	1:A:319:GLY:HA2	2.11	0.50
2:B:267:GLU:O	2:B:271:LEU:HD11	2.11	0.50
1:A:493:SER:O	1:A:497:LEU:HD12	2.11	0.50
2:B:406:ARG:HD3	2:B:450:ASP:OD2	2.11	0.50
2:B:163:THR:O	2:B:166:ILE:HG22	2.12	0.50
1:A:247:PRO:HG2	1:A:274:GLN:NE2	2.27	0.50
2:B:437:THR:HB	2:B:441:PHE:CE2	2.47	0.50

*Continued on next page...*

*Continued from previous page...*

Atom-1	Atom-2	Distance(Å)	Clash(Å)
2:B:207:ASN:HD21	2:B:210:ASP:N	2.10	0.50
2:B:426:GLY:O	2:B:428:MET:HG3	2.12	0.50
1:A:353:GLU:OE1	1:A:366:ASN:HB2	2.11	0.50
3:G:226:SER:O	3:G:229:MET:HB2	2.11	0.50
1:A:483:ILE:HD13	1:A:488:LYS:N	2.27	0.50
1:A:397:TYR:CE2	1:A:401[A]:ALA:HB2	2.46	0.50
2:B:383[A]:SER:O	2:B:387[A]:ILE:N	2.43	0.50
2:B:316:ASP:HB3	2:B:318:THR:OG1	2.11	0.50
1:A:402[A]:ALA:O	1:A:403[A]:PHE:CD1	2.65	0.49
3:G:228:ARG:O	3:G:229:MET:C	2.50	0.49
1:A:133:ALA:HB1	1:A:139:ARG:HH22	1.77	0.49
1:A:154:ASP:HB2	1:A:441:GLN:OE1	2.12	0.49
2:B:413:PHE:CZ	2:B:444:ILE:HD11	2.47	0.49
2:B:88:PRO:HA	2:B:91:LEU:HD12	1.94	0.49
3:G:23:MET:SD	3:G:228:ARG:HG3	2.52	0.49
1:A:446:TYR:HA	1:A:449:VAL:HG12	1.94	0.49
2:B:151:LYS:HE2	2:B:296:ILE:HG13	1.94	0.49
2:B:350:PRO:CB	2:B:378:LEU:HD13	2.42	0.49
2:B:29:LEU:CD1	2:B:58:VAL:HG13	2.42	0.49
1:A:299:PHE:C	1:A:301:LEU:H	2.16	0.49
2:B:350:PRO:HB2	2:B:378:LEU:HD13	1.94	0.49
1:A:257:PHE:HD2	1:A:264:ALA:HB2	1.77	0.49
2:B:408:ARG:O	2:B:412:ARG:HG2	2.12	0.49
1:A:166:LEU:HD12	1:A:342:VAL:HG12	1.95	0.49
1:A:291:ARG:O	1:A:294:TYR:HB2	2.13	0.49
2:B:378:LEU:HA	2:B:381[A]:TYR:HB3	1.94	0.49
2:B:381[A]:TYR:HA	2:B:384[A]:LEU:CD2	2.42	0.49
1:A:280:GLN:OE1	2:B:284:THR:HA	2.13	0.49
1:A:445:ILE:HG23	1:A:446:TYR:N	2.27	0.49
1:A:397:TYR:CZ	1:A:421:GLY:HA3	2.47	0.49
2:B:358:MET:HE3	2:B:368:TYR:HB2	1.94	0.49
2:B:44:ARG:HG2	2:B:44:ARG:NH1	2.26	0.49
2:B:362:ILE:N	2:B:362:ILE:HD13	2.27	0.49
2:B:281:TYR:HD1	2:B:281:TYR:H	1.61	0.49
1:A:386:VAL:O	1:A:449:VAL:HG21	2.12	0.49
2:B:96:ASN:C	2:B:96:ASN:HD22	2.16	0.49
2:B:174:ALA:O	2:B:177:HIS:HB3	2.12	0.49
3:G:82:HIS:CD2	3:G:82:HIS:H	2.30	0.49
1:A:417:LEU:HA	1:A:420:ARG:NE	2.27	0.49
1:A:186:GLN:O	1:A:189:PHE:HB2	2.13	0.48
1:A:138:PRO:HA	1:A:316:PHE:CD2	2.48	0.48
2:B:373:GLY:O	2:B:377:ILE:HG22	2.13	0.48

*Continued on next page...*

*Continued from previous page...*

Atom-1	Atom-2	Distance(Å)	Clash(Å)
2:B:138:LYS:HB3	2:B:414:LEU:HA	1.94	0.48
1:A:178:ILE:HG23	1:A:179:ALA:N	2.28	0.48
2:B:15:ALA:HB3	2:B:22:ASP:HB2	1.95	0.48
3:G:233:ASP:CG	3:G:237:LYS:HZ2	2.17	0.48
1:A:137:ILE:CG1	1:A:138:PRO:HD3	2.43	0.48
2:B:196:LEU:HD23	2:B:219:TYR:OH	2.12	0.48
1:A:410[A]:LEU:HD22	1:A:411[A]:ASP:N	2.26	0.48
3:G:78:CYS:SG	3:G:78:CYS:O	2.71	0.48
1:A:403[A]:PHE:O	1:A:404[A]:ALA:C	2.51	0.48
1:A:422:VAL:O	1:A:425:THR:HB	2.14	0.48
1:A:59:LEU:HD12	1:A:60:LYS:H	1.78	0.48
2:B:226:PRO:HB3	2:B:267:GLU:OE1	2.14	0.48
2:B:251:VAL:HG12	2:B:252:LEU:N	2.28	0.48
1:A:102:GLU:OE1	1:A:123:SER:HA	2.14	0.48
3:G:23:MET:HB3	3:G:232:MET:HG2	1.96	0.48
2:B:268:VAL:O	2:B:272:LEU:HG	2.14	0.48
2:B:113:PHE:N	2:B:113:PHE:CD1	2.81	0.48
1:A:392:LEU:HA	1:A:395:ALA:HB2	1.96	0.48
1:A:386:VAL:HG23	1:A:387:ALA:N	2.29	0.47
2:B:253:LEU:HG	2:B:255:ILE:CD1	2.42	0.47
3:G:250:PHE:HE1	3:G:254:ARG:HH11	1.60	0.47
2:B:319:ASP:C	2:B:321:ALA:H	2.17	0.47
1:A:385:GLN:CG	1:A:489:ILE:HD12	2.43	0.47
1:A:98:PRO:HA	1:A:126:ARG:HD3	1.95	0.47
2:B:259:PHE:CD1	2:B:259:PHE:C	2.87	0.47
3:G:241:ASP:O	3:G:245:LYS:N	2.48	0.47
2:B:370:VAL:O	2:B:374:VAL:HG23	2.13	0.47
1:A:57:SER:CB	1:A:81:LEU:HB2	2.44	0.47
2:B:234:LEU:O	2:B:237:LEU:HB3	2.14	0.47
3:G:251:ASN:HA	3:G:254:ARG:HB3	1.97	0.47
2:B:374:VAL:HG22	2:B:410:ILE:HD13	1.97	0.47
1:A:492:GLN:HA	1:A:492:GLN:HE21	1.79	0.47
1:A:223:ALA:C	1:A:225:ALA:H	2.18	0.47
2:B:296:ILE:HD13	2:B:308:GLN:OE1	2.13	0.47
2:B:38:VAL:HG11	2:B:69:LEU:HD21	1.96	0.47
1:A:356:LEU:HB2	1:A:364:ALA:HB1	1.96	0.47
2:B:212:THR:HG22	2:B:214:LYS:HZ1	1.79	0.47
1:A:173:THR:HG22	1:A:352:LEU:HB3	1.96	0.47
3:G:249:THR:HA	3:G:252:ARG:HH11	1.79	0.47
2:B:378:LEU:HD23	2:B:381[A]:TYR:HD2	1.80	0.47
1:A:81:LEU:HD12	1:A:81:LEU:H	1.79	0.47
2:B:237:LEU:HD23	2:B:241:GLU:HG3	1.97	0.47

*Continued on next page...*

*Continued from previous page...*

Atom-1	Atom-2	Distance(Å)	Clash(Å)
2:B:268:VAL:O	2:B:271:LEU:HG	2.14	0.47
2:B:258:ILE:O	2:B:258:ILE:HG13	2.14	0.47
1:A:34:ILE:HD12	1:A:35:GLY:N	2.27	0.47
2:B:335:LEU:HA	2:B:347:ALA:O	2.15	0.47
1:A:359:LYS:HB2	1:A:361:ILE:HG12	1.97	0.47
1:A:177:SER:O	1:A:180:ILE:HG22	2.15	0.47
1:A:171:ARG:HH12	2:B:354:THR:HG21	1.79	0.47
1:A:498:LYS:HA	1:A:501:VAL:HG22	1.96	0.47
1:A:313:ASN:ND2	1:A:316:PHE:HB2	2.29	0.47
2:B:194:ASN:O	2:B:197:TYR:HB3	2.15	0.47
1:A:397:TYR:CE1	1:A:418:LEU:HA	2.41	0.47
1:A:410[A]:LEU:CD2	1:A:411[A]:ASP:N	2.78	0.47
2:B:220:GLY:N	2:B:232:VAL:HG21	2.29	0.47
1:A:358:TYR:HE2	2:B:351:LEU:HD12	1.80	0.47
2:B:389[A]:ALA:HA	2:B:395[A]:GLU:HG3	1.97	0.47
1:A:56:SER:C	1:A:58:GLY:H	2.18	0.47
1:A:263:HIS:HB3	1:A:320:SER:OG	2.15	0.47
2:B:145:PRO:HD3	2:B:358:MET:HG3	1.97	0.47
3:G:249:THR:CA	3:G:252:ARG:HB2	2.45	0.47
2:B:139:VAL:HG23	2:B:414:LEU:HB3	1.97	0.47
1:A:33:SER:OG	1:A:40:ARG:HB2	2.15	0.47
1:A:152:ALA:HB2	1:A:428:LEU:O	2.16	0.46
2:B:298:THR:HG22	2:B:299:THR:N	2.31	0.46
1:A:299:PHE:HA	1:A:341:ASN:ND2	2.27	0.46
2:B:20:VAL:HG11	2:B:59:ARG:HD2	1.94	0.46
2:B:186:VAL:HG13	2:B:232:VAL:CG1	2.45	0.46
1:A:45:ARG:O	1:A:45:ARG:HD3	2.14	0.46
1:A:135:GLY:O	1:A:138:PRO:HD2	2.15	0.46
2:B:38:VAL:HG23	2:B:45:LEU:O	2.16	0.46
1:A:299:PHE:C	1:A:301:LEU:N	2.68	0.46
3:G:250:PHE:O	3:G:254:ARG:HB2	2.16	0.46
2:B:469:LYS:HE3	2:B:473:LEU:HD13	1.96	0.46
2:B:432:VAL:CG1	2:B:435:LYS:HD2	2.44	0.46
2:B:86:VAL:HG23	2:B:112:GLN:NE2	2.24	0.46
1:A:209:LYS:CD	2:B:356:ARG:HH12	2.29	0.46
1:A:204:VAL:HA	1:A:232:VAL:HG23	1.98	0.46
2:B:137:ILE:HA	2:B:416:GLN:OE1	2.16	0.46
2:B:269:SER:OG	2:B:282:GLN:HB3	2.16	0.46
1:A:399:GLU:O	1:A:402[A]:ALA:HB3	2.15	0.46
1:A:404[A]:ALA:C	1:A:406[A]:PHE:H	2.18	0.46
3:G:19:ILE:N	3:G:19:ILE:HD12	2.30	0.46
1:A:390:MET:SD	1:A:449:VAL:HB	2.56	0.46

*Continued on next page...*

*Continued from previous page...*

Atom-1	Atom-2	Distance(Å)	Clash(Å)
1:A:188:ARG:HG3	1:A:189:PHE:HD1	1.78	0.46
3:G:217:LEU:O	3:G:221:THR:N	2.45	0.46
1:A:336:ALA:C	1:A:339:PRO:HD2	2.36	0.46
3:G:261:GLU:O	3:G:265:ILE:HG13	2.16	0.46
1:A:386:VAL:HG12	1:A:450:ARG:HH21	1.80	0.45
1:A:178:ILE:HG23	1:A:179:ALA:H	1.81	0.45
1:A:312:MET:HB2	1:A:319:GLY:O	2.15	0.45
1:A:164:ARG:N	1:A:164:ARG:HD3	2.30	0.45
1:A:202:ILE:O	1:A:266:ILE:HA	2.16	0.45
2:B:258:ILE:O	2:B:261:PHE:HB3	2.16	0.45
2:B:157:GLY:O	2:B:158:ALA:HB3	2.16	0.45
2:B:362:ILE:H	2:B:362:ILE:HD13	1.82	0.45
1:A:156:LEU:HG	1:A:428:LEU:HD11	1.97	0.45
2:B:196:LEU:HD11	2:B:200:MET:HE2	1.99	0.45
2:B:357:ILE:HG13	2:B:357:ILE:O	2.17	0.45
1:A:426:GLU:HB2	1:A:461:ILE:HD12	1.97	0.45
1:A:343:ILE:HD11	1:A:349:GLN:NE2	2.31	0.45
3:G:231:ALA:C	3:G:232:MET:SD	2.94	0.45
1:A:138:PRO:O	1:A:313:ASN:HB3	2.16	0.45
1:A:170:ASP:CG	1:A:329:THR:HB	2.37	0.45
1:A:302:HIS:O	1:A:306:LEU:HD23	2.16	0.45
1:A:336:ALA:O	1:A:339:PRO:HD2	2.16	0.45
3:G:84:SER:HA	3:G:87:LYS:HE2	1.99	0.45
1:A:78:ASN:N	1:A:78:ASN:ND2	2.65	0.45
2:B:144:ALA:HB2	2:B:353:SER:O	2.15	0.45
1:A:225:ALA:HA	1:A:228:TYR:CE1	2.52	0.45
2:B:277:SER:O	2:B:280:GLY:N	2.47	0.45
2:B:121:PRO:HG3	2:B:297:THR:CG2	2.47	0.45
1:A:25:LEU:HA	1:A:28:THR:O	2.15	0.45
3:G:24:LYS:HE2	3:G:233:ASP:HB2	1.97	0.45
1:A:41:VAL:HG12	1:A:42:HIS:O	2.17	0.45
2:B:378:LEU:C	2:B:381[A]:TYR:HB3	2.36	0.45
1:A:431:GLY:HA2	6:A:603:ATP:HN62	1.81	0.45
2:B:235:THR:C	2:B:237:LEU:H	2.20	0.45
1:A:453:LEU:O	1:A:456:LEU:HG	2.16	0.45
2:B:284:THR:HB	2:B:288:ASP:OD1	2.16	0.45
1:A:153:VAL:O	1:A:157:VAL:N	2.49	0.45
2:B:86:VAL:O	2:B:112:GLN:NE2	2.50	0.45
1:A:300:TYR:O	1:A:304:ARG:HB3	2.16	0.45
1:A:81:LEU:HD12	1:A:81:LEU:N	2.31	0.45
1:A:469:LEU:O	1:A:473:VAL:HG22	2.17	0.45
2:B:267:GLU:O	2:B:271:LEU:HD21	2.17	0.44

*Continued on next page...*

*Continued from previous page...*

Atom-1	Atom-2	Distance(Å)	Clash(Å)
2:B:162:LYS:HE2	2:B:311:TYR:HA	1.98	0.44
1:A:382:ALA:O	1:A:386:VAL:HG22	2.17	0.44
2:B:250:ASP:HA	2:B:303:SER:O	2.16	0.44
1:A:211:SER:O	1:A:215:GLN:HG2	2.17	0.44
2:B:469:LYS:C	2:B:469:LYS:HD3	2.37	0.44
2:B:416:GLN:HE21	2:B:418:PHE:HD2	1.64	0.44
2:B:187:GLY:O	2:B:221:GLN:HB3	2.17	0.44
2:B:298:THR:HG23	2:B:303:SER:CB	2.45	0.44
2:B:335:LEU:HD23	2:B:347:ALA:H	1.81	0.44
1:A:219:ARG:HA	1:A:222:ASP:OD2	2.18	0.44
1:A:453:LEU:H	1:A:453:LEU:HD12	1.82	0.44
1:A:209:LYS:HB2	1:A:212:THR:OG1	2.18	0.44
1:A:199:LEU:HD21	1:A:265:LEU:HB2	2.00	0.44
2:B:152:ILE:HB	2:B:307:VAL:HA	2.00	0.44
3:G:20:THR:O	3:G:232:MET:HG3	2.18	0.44
1:A:158:PRO:HG2	1:A:379:GLN:OE1	2.17	0.44
2:B:32:ILE:HA	2:B:49:VAL:HG12	2.00	0.44
1:A:417:LEU:C	1:A:420:ARG:HG2	2.37	0.44
2:B:332:THR:HB	2:B:354:THR:H	1.83	0.44
1:A:246:ALA:O	1:A:249:SER:HB2	2.18	0.44
1:A:25:LEU:HB3	1:A:43:GLY:HA2	1.99	0.44
1:A:234:ALA:HB1	1:A:243:GLN:HA	2.00	0.44
1:A:235:THR:O	1:A:237:SER:N	2.51	0.44
1:A:424:LEU:HD13	1:A:424:LEU:C	2.38	0.44
2:B:258:ILE:HD11	2:B:292:MET:SD	2.57	0.44
1:A:38:ILE:HG23	1:A:285:LEU:HD23	2.00	0.44
1:A:146:MET:SD	1:A:265:LEU:HD13	2.57	0.44
1:A:104:LEU:HD22	1:A:230:ILE:HD11	1.98	0.44
3:G:4:LYS:O	3:G:5:ASP:CB	2.66	0.44
1:A:312:MET:O	1:A:318:GLY:HA2	2.17	0.44
2:B:419:GLN:HB2	2:B:419:GLN:HE21	1.59	0.44
3:G:10:LEU:HD23	3:G:13:ILE:HD12	1.99	0.44
2:B:137:ILE:O	2:B:141:ASP:HB3	2.18	0.44
1:A:140:ILE:HG23	1:A:141:SER:N	2.25	0.44
2:B:336:SER:O	2:B:339:ILE:HB	2.18	0.44
1:A:422:VAL:HG12	1:A:458:PRO:HG2	1.99	0.44
2:B:16:VAL:C	2:B:17:ILE:HG13	2.38	0.44
1:A:206:ILE:HD11	1:A:247:PRO:HG3	1.99	0.44
2:B:319:ASP:HB3	2:B:322:PRO:HD2	2.00	0.44
2:B:412:ARG:HD2	2:B:458:TYR:HD1	1.82	0.44
1:A:501:VAL:HG23	1:A:502:THR:N	2.32	0.44
3:G:257:VAL:O	3:G:261:GLU:HG2	2.18	0.44

*Continued on next page...*

*Continued from previous page...*

Atom-1	Atom-2	Distance(Å)	Clash(Å)
2:B:259:PHE:CD2	2:B:321:ALA:HB1	2.53	0.44
2:B:66:THR:HG22	2:B:69:LEU:CD1	2.44	0.44
1:A:338:ILE:CB	1:A:339:PRO:HD3	2.48	0.44
1:A:111:LEU:HB3	1:A:113:ASN:HD21	1.82	0.44
1:A:436:MET:O	1:A:437:ALA:O	2.36	0.44
1:A:188:ARG:CZ	1:A:437:ALA:HB2	2.48	0.44
1:A:257:PHE:CD2	1:A:264:ALA:HB2	2.53	0.44
2:B:259:PHE:HB3	2:B:310:ILE:HG23	1.98	0.43
1:A:150:ILE:HB	1:A:153:VAL:HB	1.99	0.43
1:A:62:MET:HG3	1:A:64:LEU:HD13	2.00	0.43
1:A:74:VAL:HG13	1:A:74:VAL:O	2.17	0.43
2:B:268:VAL:HA	2:B:271:LEU:HG	2.00	0.43
1:A:479:LEU:HD23	1:A:497:LEU:HG	1.99	0.43
2:B:256:ASP:O	2:B:257:ASN:HB2	2.18	0.43
1:A:153:VAL:HG12	1:A:154:ASP:N	2.33	0.43
1:A:64:LEU:HD22	1:A:74:VAL:CG1	2.48	0.43
1:A:189:PHE:N	1:A:189:PHE:CD1	2.86	0.43
1:A:135:GLY:H	1:A:139:ARG:HE	1.66	0.43
2:B:76:LEU:HG	2:B:77:ASP:N	2.32	0.43
1:A:204:VAL:HA	1:A:232:VAL:CG2	2.49	0.43
1:A:272:SER:O	1:A:275:ALA:HB3	2.18	0.43
2:B:158:ALA:O	2:B:337:ARG:NH2	2.52	0.43
2:B:149:GLY:HA2	2:B:304:ILE:O	2.18	0.43
2:B:255:ILE:HD12	2:B:255:ILE:N	2.33	0.43
1:A:194:ASP:HB3	1:A:197:LYS:HB3	2.00	0.43
2:B:23:VAL:O	2:B:57:THR:HG23	2.19	0.43
2:B:330:ASP:O	2:B:331:ALA:HB2	2.19	0.43
1:A:270:ASP:HB3	1:A:273:LYS:HB2	2.00	0.43
1:A:267:ILE:CD1	1:A:324:LEU:HD13	2.48	0.43
3:G:24:LYS:O	3:G:27:ALA:HB3	2.18	0.43
2:B:456:ALA:O	2:B:469:LYS:HD2	2.19	0.43
1:A:493:SER:HA	1:A:496:LYS:HB2	2.00	0.43
2:B:151:LYS:NZ	2:B:293:GLN:O	2.41	0.43
1:A:363:PRO:O	1:A:364:ALA:HB3	2.19	0.43
1:A:101:ASP:O	1:A:104:LEU:HB2	2.19	0.43
1:A:390:MET:CE	1:A:449:VAL:HB	2.48	0.43
2:B:142:LEU:HG	2:B:367:HIS:CD2	2.54	0.43
1:A:299:PHE:CD2	1:A:303:SER:OG	2.71	0.43
1:A:404[A]:ALA:O	1:A:406[A]:PHE:N	2.52	0.43
2:B:374:VAL:O	2:B:378:LEU:HD12	2.18	0.43
1:A:29:GLY:HA3	1:A:42:HIS:O	2.19	0.43
2:B:32:ILE:O	2:B:33:LEU:HB2	2.19	0.43

*Continued on next page...*



*Continued from previous page...*

Atom-1	Atom-2	Distance(Å)	Clash(Å)
1:A:292:GLU:C	1:A:294:TYR:H	2.23	0.43
1:A:480:LEU:HD12	1:A:481:GLY:N	2.34	0.43
2:B:162:LYS:HB3	7:B:604:ADP:O2B	2.19	0.42
2:B:148:LYS:HA	2:B:305:THR:HG23	2.00	0.42
1:A:397:TYR:HA	1:A:400[A]:VAL:HG22	2.00	0.42
2:B:182:VAL:HG12	2:B:183:PHE:N	2.34	0.42
1:A:172:GLN:HA	1:A:172:GLN:OE1	2.18	0.42
1:A:148:THR:O	1:A:185:ASN:HB2	2.19	0.42
3:G:257:VAL:HG12	3:G:261:GLU:CD	2.39	0.42
2:B:188:GLU:HA	2:B:222:MET:CE	2.50	0.42
2:B:412:ARG:HD2	2:B:458:TYR:CD1	2.54	0.42
1:A:381:ARG:HD2	1:A:381:ARG:N	2.26	0.42
1:A:458:PRO:O	1:A:461:ILE:HG13	2.18	0.42
1:A:44:LEU:HD12	1:A:47:VAL:HB	2.01	0.42
2:B:230:ALA:HB2	2:B:264:ALA:HB1	2.00	0.42
3:G:24:LYS:HA	3:G:232:MET:CB	2.50	0.42
3:G:249:THR:C	3:G:252:ARG:H	2.23	0.42
2:B:378:LEU:HD23	2:B:381[A]:TYR:CD2	2.54	0.42
2:B:61:ILE:HG23	2:B:268:VAL:HG21	2.01	0.42
2:B:293:GLN:CD	2:B:308:GLN:HE22	2.22	0.42
1:A:171:ARG:HH12	2:B:354:THR:CG2	2.32	0.42
3:G:217:LEU:HA	3:G:220:SER:HB2	2.01	0.42
1:A:368:GLY:C	1:A:369:LEU:HD22	2.40	0.42
2:B:165:LEU:HG	2:B:169:LEU:HD11	2.02	0.42
2:B:441:PHE:CD1	2:B:442:GLN:N	2.85	0.42
2:B:189:ARG:HD2	2:B:189:ARG:H	1.85	0.42
1:A:338:ILE:HD13	1:A:338:ILE:HA	1.97	0.42
1:A:229:THR:HG22	1:A:230:ILE:N	2.35	0.42
1:A:189:PHE:N	1:A:189:PHE:HD1	2.18	0.42
2:B:140:VAL:HG13	2:B:146:TYR:OH	2.20	0.42
1:A:25:LEU:HD22	1:A:43:GLY:HA3	2.01	0.42
2:B:53:LEU:HD12	2:B:57:THR:HG22	2.00	0.42
2:B:345:TYR:HD2	2:B:346:PRO:HA	1.85	0.42
2:B:418:PHE:HA	2:B:430:LYS:N	2.31	0.42
2:B:164:VAL:HG11	7:B:604:ADP:N7	2.35	0.42
1:A:50:GLU:O	1:A:95:VAL:HG23	2.20	0.42
3:G:249:THR:O	3:G:252:ARG:CB	2.63	0.42
1:A:98:PRO:HG3	1:A:126:ARG:CZ	2.50	0.42
1:A:411[A]:ASP:O	1:A:414:THR:HG22	2.19	0.42
1:A:113:ASN:ND2	1:A:113:ASN:N	2.66	0.42
3:G:257:VAL:HG12	3:G:261:GLU:OE2	2.20	0.42
1:A:445:ILE:CG2	1:A:446:TYR:N	2.82	0.42

*Continued on next page...*



*Continued from previous page...*

Atom-1	Atom-2	Distance(Å)	Clash(Å)
2:B:410:ILE:HD11	2:B:445:LEU:HG	2.02	0.42
1:A:165:GLU:OE2	1:A:350:ILE:HD11	2.20	0.42
1:A:169:GLY:HA2	1:A:352:LEU:O	2.20	0.42
1:A:38:ILE:CG2	1:A:285:LEU:HD23	2.49	0.42
1:A:165:GLU:O	1:A:325:PRO:HD2	2.20	0.42
2:B:187:GLY:O	2:B:188:GLU:O	2.38	0.41
2:B:253:LEU:HD12	2:B:254:PHE:H	1.85	0.41
2:B:149:GLY:N	2:B:305:THR:HG23	2.33	0.41
1:A:209:LYS:HE3	2:B:356:ARG:NH2	2.32	0.41
1:A:146:MET:HA	1:A:161:ARG:HH21	1.84	0.41
1:A:251:CYS:SG	1:A:268:TYR:OH	2.77	0.41
3:G:249:THR:C	3:G:252:ARG:HB2	2.40	0.41
1:A:403[A]:PHE:O	1:A:406[A]:PHE:HD1	1.97	0.41
1:A:397:TYR:CE2	1:A:421:GLY:HA3	2.55	0.41
1:A:324:LEU:N	1:A:324:LEU:HD12	2.36	0.41
1:A:431:GLY:HA2	6:A:603:ATP:N6	2.35	0.41
1:A:349:GLN:OE1	1:A:370:SER:HA	2.20	0.41
3:G:272:LEU:HB3	3:G:273:ASP:H	1.75	0.41
2:B:255:ILE:HG12	2:B:258:ILE:HD13	2.01	0.41
1:A:199:LEU:HA	1:A:199:LEU:HD12	1.91	0.41
1:A:52:MET:O	1:A:91:THR:HB	2.20	0.41
2:B:344:ILE:HG23	2:B:415:SER:OG	2.20	0.41
3:G:39:LYS:HA	3:G:39:LYS:HD2	1.72	0.41
1:A:140:ILE:HB	1:A:313:ASN:HB2	2.02	0.41
2:B:447:GLY:O	2:B:450:ASP:HB3	2.21	0.41
1:A:250:GLY:O	1:A:253:MET:HB2	2.21	0.41
2:B:168:GLU:O	2:B:171:ASN:HB3	2.21	0.41
2:B:366:GLU:O	2:B:370:VAL:HG22	2.20	0.41
2:B:382[A]:LYS:HE2	2:B:382[A]:LYS:HA	2.02	0.41
1:A:349:GLN:CD	1:A:370:SER:HA	2.41	0.41
1:A:351:PHE:CZ	1:A:353:GLU:HG2	2.55	0.41
2:B:156:GLY:HA3	2:B:162:LYS:NZ	2.36	0.41
1:A:397:TYR:HA	1:A:400[A]:VAL:HG23	2.03	0.41
1:A:73:VAL:HG12	1:A:74:VAL:N	2.36	0.41
2:B:143:LEU:O	2:B:145:PRO:HD3	2.21	0.41
1:A:329:THR:HG22	1:A:332:GLY:H	1.85	0.41
2:B:332:THR:O	2:B:333:THR:HG23	2.21	0.41
1:A:135:GLY:C	1:A:138:PRO:HD2	2.41	0.41
1:A:441:GLN:HB2	1:A:441:GLN:HE21	1.64	0.41
3:G:245:LYS:HD2	3:G:245:LYS:HA	1.90	0.41
1:A:300:TYR:O	1:A:304:ARG:NE	2.54	0.41
2:B:230:ALA:C	2:B:231:ARG:HD3	2.40	0.41

*Continued on next page...*

*Continued from previous page...*

Atom-1	Atom-2	Distance(Å)	Clash(Å)
1:A:54:GLU:O	1:A:88:VAL:HA	2.21	0.41
1:A:109:ASP:O	1:A:233:SER:N	2.54	0.41
2:B:184:ALA:HA	2:B:218:VAL:O	2.21	0.41
3:G:12:SER:O	3:G:16:ILE:HG13	2.21	0.41
2:B:417:PRO:HD2	2:B:430:LYS:HG3	2.02	0.40
2:B:86:VAL:HG21	2:B:114:ALA:HB2	2.03	0.40
2:B:30:PRO:HG2	2:B:58:VAL:HG11	2.02	0.40
1:A:198:LYS:O	1:A:199:LEU:HB2	2.21	0.40
3:G:37:GLU:O	3:G:40:PRO:HD2	2.20	0.40
2:B:282:GLN:C	2:B:284:THR:H	2.25	0.40
2:B:259:PHE:HD2	2:B:321:ALA:HB1	1.87	0.40
2:B:186:VAL:HG12	2:B:260:ARG:HB2	2.03	0.40
1:A:349:GLN:O	1:A:370:SER:HB2	2.20	0.40
1:A:148:THR:O	1:A:182:THR:HA	2.21	0.40
2:B:84:ILE:C	2:B:113:PHE:HB3	2.41	0.40
1:A:155:SER:OG	1:A:156:LEU:N	2.54	0.40
1:A:279:ARG:HD2	1:A:293:ALA:CB	2.51	0.40
2:B:145:PRO:CD	2:B:358:MET:HG3	2.50	0.40
2:B:339:ILE:HG21	2:B:347:ALA:HA	2.02	0.40
2:B:138:LYS:HD2	2:B:414:LEU:CD2	2.51	0.40
1:A:333:ASP:OD2	1:A:336:ALA:HB2	2.20	0.40
2:B:299:THR:C	2:B:301:LYS:H	2.24	0.40
1:A:299:PHE:O	1:A:303:SER:N	2.54	0.40
2:B:355:SER:OG	2:B:357:ILE:HG22	2.22	0.40
2:B:96:ASN:ND2	2:B:100:GLU:N	2.67	0.40
3:G:209:LEU:O	3:G:213:ILE:HG22	2.22	0.40
1:A:246:ALA:HB3	1:A:247:PRO:HD3	2.04	0.40
2:B:74:LYS:N	2:B:74:LYS:HD2	2.36	0.40
2:B:422:GLU:C	2:B:424:PHE:H	2.24	0.40
3:G:266:ILE:HA	3:G:269:ALA:HB3	2.03	0.40

All (539) symmetry-related close contacts are listed below. The label for Atom-2 includes the symmetry operator and encoded unit-cell translations to be applied.

Atom-1	Atom-2	Distance(Å)	Clash(Å)
3:G:257:VAL:C	3:G:260:LYS:CE[3_675]	0.35	1.85
3:G:266:ILE:CA	3:G:267:SER:CA[3_675]	0.46	1.74
3:G:270:ALA:C	3:G:271:ALA:N[3_675]	0.57	1.63
3:G:85:VAL:N	3:G:221:THR:O[3_675]	0.61	1.59
3:G:85:VAL:N	3:G:221:THR:C[3_675]	0.64	1.56
3:G:266:ILE:N	3:G:267:SER:CB[3_675]	0.64	1.56
3:G:87:LYS:CG	3:G:222:THR:CG2[3_675]	0.65	1.55

*Continued on next page...*

*Continued from previous page...*

Atom-1	Atom-2	Distance(Å)	Clash(Å)
3:G:262:LEU:CA	3:G:263:ILE:CG1[2_765]	0.65	1.55
3:G:256:ALA:CB	3:G:257:VAL:CG2[3_675]	0.66	1.54
2:B:389[A]:ALA:C	3:G:236:SER:N[3_675]	0.67	1.53
3:G:83:SER:N	3:G:224:GLU:C[3_675]	0.70	1.50
3:G:262:LEU:C	3:G:263:ILE:CB[2_765]	0.73	1.47
3:G:262:LEU:O	3:G:264:GLU:CA[3_675]	0.78	1.42
2:B:388[A]:ILE:CD1	3:G:19:ILE:CD1[2_765]	0.79	1.41
3:G:86:ALA:CB	3:G:223:SER:CB[3_675]	0.80	1.40
1:A:406[A]:PHE:CE1	3:G:18:LYS:O[2_765]	0.81	1.39
3:G:85:VAL:CA	3:G:221:THR:CA[3_675]	0.81	1.39
3:G:42:ARG:CZ	3:G:89:MET:O[2_765]	0.85	1.35
3:G:262:LEU:CB	3:G:263:ILE:CD1[2_765]	0.85	1.35
3:G:270:ALA:O	3:G:271:ALA:CA[2_765]	0.85	1.35
3:G:12:SER:OG	3:G:242:MET:CB[2_765]	0.86	1.34
2:B:387[A]:ILE:O	3:G:238:ASN:N[3_675]	0.87	1.33
3:G:8:ARG:N	3:G:245:LYS:O[2_765]	0.89	1.31
3:G:85:VAL:CA	3:G:221:THR:C[3_675]	0.89	1.31
3:G:262:LEU:CG	3:G:264:GLU:OE1[3_675]	0.89	1.31
3:G:262:LEU:CG	3:G:264:GLU:CD[3_675]	0.92	1.28
2:B:387[A]:ILE:C	3:G:238:ASN:N[3_675]	0.93	1.27
2:B:395[A]:GLU:CG	3:G:230:THR:O[3_675]	0.96	1.24
3:G:12:SER:N	3:G:242:MET:N[2_765]	0.97	1.23
3:G:262:LEU:O	3:G:264:GLU:N[3_675]	0.97	1.23
2:B:386[A]:ASP:CB	3:G:240:SER:CA[3_675]	0.99	1.21
2:B:387[A]:ILE:CG2	3:G:15:ASN:C[2_765]	0.99	1.21
3:G:260:LYS:N	3:G:261:GLU:N[3_675]	1.00	1.20
2:B:393[A]:MET:CG	3:G:24:LYS:CG[3_675]	1.02	1.18
2:B:394[A]:ASP:N	3:G:24:LYS:CD[3_675]	1.02	1.18
3:G:259:THR:CB	3:G:261:GLU:OE1[3_675]	1.02	1.18
2:B:387[A]:ILE:O	3:G:237:LYS:C[3_675]	1.04	1.16
3:G:42:ARG:NH1	3:G:89:MET:O[2_765]	1.04	1.16
3:G:262:LEU:CA	3:G:264:GLU:CG[3_675]	1.04	1.16
3:G:262:LEU:CD2	3:G:264:GLU:OE1[3_675]	1.05	1.15
3:G:266:ILE:N	3:G:267:SER:OG[3_675]	1.05	1.15
2:B:395[A]:GLU:N	3:G:229:MET:O[3_675]	1.06	1.14
3:G:82:HIS:N	3:G:224:GLU:OE2[3_675]	1.06	1.14
3:G:86:ALA:CB	3:G:223:SER:OG[3_675]	1.07	1.13
3:G:258:ILE:N	3:G:260:LYS:CE[3_675]	1.07	1.13
3:G:262:LEU:C	3:G:264:GLU:N[3_675]	1.07	1.13
2:B:395[A]:GLU:CD	3:G:230:THR:O[3_675]	1.09	1.11
3:G:83:SER:N	3:G:224:GLU:CA[3_675]	1.09	1.11
3:G:256:ALA:CA	3:G:257:VAL:CG1[3_675]	1.10	1.10

*Continued on next page...*

*Continued from previous page...*

Atom-1	Atom-2	Distance(Å)	Clash(Å)
3:G:262:LEU:CB	3:G:264:GLU:CD[3.675]	1.11	1.09
3:G:264:GLU:O	3:G:266:ILE:CD1[2.765]	1.11	1.09
2:B:388[A]:ILE:N	3:G:238:ASN:CA[3.675]	1.12	1.08
2:B:394[A]:ASP:CG	3:G:27:ALA:CB[3.675]	1.12	1.08
3:G:9:ARG:N	3:G:246:LEU:N[2.765]	1.12	1.08
3:G:256:ALA:CA	3:G:257:VAL:CB[3.675]	1.12	1.08
3:G:83:SER:O	3:G:222:THR:C[3.675]	1.13	1.07
3:G:262:LEU:CA	3:G:263:ILE:CD1[2.765]	1.13	1.07
3:G:263:ILE:CB	3:G:264:GLU:N[2.765]	1.13	1.07
2:B:387[A]:ILE:CG1	3:G:15:ASN:CB[2.765]	1.14	1.06
3:G:85:VAL:CB	3:G:221:THR:CA[3.675]	1.14	1.06
3:G:84:SER:CB	3:G:225:GLN:CG[3.675]	1.15	1.05
3:G:256:ALA:CB	3:G:257:VAL:CB[3.675]	1.16	1.04
2:B:389[A]:ALA:C	3:G:235:ALA:C[3.675]	1.17	1.03
3:G:5:ASP:CB	3:G:250:PHE:N[2.765]	1.17	1.03
2:B:387[A]:ILE:C	3:G:238:ASN:CA[3.675]	1.18	1.02
3:G:262:LEU:C	3:G:263:ILE:CG1[2.765]	1.20	1.00
3:G:263:ILE:CG2	3:G:264:GLU:CA[2.765]	1.20	1.00
3:G:262:LEU:CB	3:G:264:GLU:CG[3.675]	1.21	0.99
3:G:263:ILE:CA	3:G:264:GLU:N[2.765]	1.21	0.99
3:G:78:CYS:CA	3:G:79:GLY:N[2.765]	1.22	0.98
3:G:257:VAL:O	3:G:260:LYS:CG[3.675]	1.22	0.98
3:G:259:THR:C	3:G:261:GLU:N[3.675]	1.22	0.98
2:B:390[A]:ILE:N	3:G:236:SER:N[3.675]	1.23	0.97
2:B:392[A]:GLY:O	3:G:232:MET:O[3.675]	1.23	0.97
3:G:266:ILE:CA	3:G:267:SER:N[3.675]	1.23	0.97
3:G:4:LYS:N	3:G:252:ARG:CA[2.765]	1.24	0.96
3:G:4:LYS:O	3:G:252:ARG:N[2.765]	1.24	0.96
3:G:16:ILE:N	3:G:238:ASN:O[2.765]	1.25	0.95
3:G:16:ILE:O	3:G:238:ASN:OD1[2.765]	1.25	0.95
3:G:265:ILE:C	3:G:267:SER:CB[3.675]	1.25	0.95
1:A:406[A]:PHE:CG	3:G:19:ILE:O[2.765]	1.26	0.94
3:G:8:ARG:N	3:G:245:LYS:C[2.765]	1.26	0.94
3:G:259:THR:OG1	3:G:261:GLU:OE1[3.675]	1.26	0.94
3:G:262:LEU:N	3:G:263:ILE:CG1[2.765]	1.26	0.94
3:G:78:CYS:N	3:G:79:GLY:N[2.765]	1.27	0.93
3:G:16:ILE:C	3:G:238:ASN:OD1[2.765]	1.28	0.92
3:G:257:VAL:O	3:G:260:LYS:CD[3.675]	1.28	0.92
3:G:266:ILE:C	3:G:267:SER:N[3.675]	1.28	0.92
3:G:78:CYS:CB	3:G:79:GLY:N[2.765]	1.30	0.90
3:G:80:ALA:CB	3:G:228:ARG:N[3.675]	1.30	0.90
3:G:266:ILE:CG2	3:G:268:GLY:N[3.675]	1.30	0.90

*Continued on next page...*

*Continued from previous page...*

Atom-1	Atom-2	Distance(Å)	Clash(Å)
3:G:83:SER:O	3:G:222:THR:O[3.675]	1.31	0.89
3:G:265:ILE:C	3:G:267:SER:OG[3.675]	1.31	0.89
1:A:406[A]:PHE:CD2	3:G:19:ILE:O[2.765]	1.32	0.88
3:G:9:ARG:CA	3:G:242:MET:O[2.765]	1.32	0.88
2:B:387[A]:ILE:CB	3:G:15:ASN:CB[2.765]	1.33	0.87
3:G:259:THR:CA	3:G:261:GLU:CB[3.675]	1.35	0.85
2:B:390[A]:ILE:N	3:G:235:ALA:C[3.675]	1.36	0.84
3:G:42:ARG:NE	3:G:89:MET:O[2.765]	1.38	0.82
3:G:83:SER:N	3:G:224:GLU:O[3.675]	1.38	0.82
3:G:269:ALA:O	3:G:271:ALA:CB[3.675]	1.38	0.82
2:B:387[A]:ILE:CA	3:G:238:ASN:C[3.675]	1.39	0.81
2:B:389[A]:ALA:CA	3:G:236:SER:N[3.675]	1.39	0.81
3:G:16:ILE:C	3:G:238:ASN:CG[2.765]	1.39	0.81
3:G:257:VAL:C	3:G:260:LYS:CD[3.675]	1.39	0.81
3:G:263:ILE:CD1	3:G:264:GLU:CG[2.765]	1.39	0.81
3:G:266:ILE:C	3:G:267:SER:CA[3.675]	1.39	0.81
2:B:387[A]:ILE:CG2	3:G:15:ASN:O[2.765]	1.40	0.80
3:G:9:ARG:CB	3:G:246:LEU:CB[2.765]	1.40	0.80
3:G:263:ILE:CG2	3:G:264:GLU:N[2.765]	1.40	0.80
3:G:264:GLU:O	3:G:266:ILE:CG1[2.765]	1.40	0.80
3:G:268:GLY:O	3:G:270:ALA:CB[2.765]	1.40	0.80
3:G:5:ASP:CG	3:G:250:PHE:CB[2.765]	1.41	0.79
3:G:267:SER:O	3:G:269:ALA:CB[2.765]	1.41	0.79
2:B:387[A]:ILE:CD1	3:G:12:SER:O[2.765]	1.42	0.78
3:G:16:ILE:CA	3:G:238:ASN:CG[2.765]	1.42	0.78
3:G:259:THR:O	3:G:261:GLU:CG[3.675]	1.42	0.78
3:G:262:LEU:O	3:G:263:ILE:CG2[2.765]	1.42	0.78
3:G:9:ARG:NH2	3:G:246:LEU:CA[3.675]	1.43	0.77
3:G:83:SER:CB	3:G:226:SER:N[3.675]	1.43	0.77
3:G:7:THR:O	3:G:245:LYS:CB[2.765]	1.44	0.76
3:G:84:SER:N	3:G:225:GLN:N[3.675]	1.44	0.76
3:G:259:THR:CB	3:G:261:GLU:CD[3.675]	1.44	0.76
3:G:263:ILE:N	3:G:264:GLU:N[3.675]	1.44	0.76
1:A:406[A]:PHE:CZ	3:G:22:SER:N[2.765]	1.45	0.75
3:G:16:ILE:CA	3:G:238:ASN:OD1[2.765]	1.45	0.75
3:G:35:GLU:OE1	3:G:90:LYS:O[2.765]	1.45	0.75
3:G:81:ILE:C	3:G:224:GLU:OE2[3.675]	1.45	0.75
2:B:388[A]:ILE:N	3:G:238:ASN:CB[3.675]	1.46	0.74
2:B:394[A]:ASP:OD1	3:G:27:ALA:CB[3.675]	1.46	0.74
2:B:394[A]:ASP:OD2	3:G:27:ALA:CB[3.675]	1.46	0.74
3:G:7:THR:O	3:G:245:LYS:CA[2.765]	1.46	0.74
3:G:266:ILE:N	3:G:267:SER:CA[3.675]	1.46	0.74

*Continued on next page...*

*Continued from previous page...*

Atom-1	Atom-2	Distance(Å)	Clash(Å)
3:G:78:CYS:CB	3:G:79:GLY:CA[2.765]	1.47	0.73
3:G:258:ILE:N	3:G:260:LYS:NZ[3.675]	1.47	0.73
3:G:262:LEU:CD2	3:G:264:GLU:CD[3.675]	1.47	0.73
2:B:384[A]:LEU:O	3:G:236:SER:O[3.675]	1.48	0.72
2:B:393[A]:MET:C	3:G:24:LYS:CD[3.675]	1.48	0.72
3:G:12:SER:CA	3:G:242:MET:N[2.765]	1.48	0.72
3:G:16:ILE:C	3:G:238:ASN:ND2[2.765]	1.48	0.72
3:G:256:ALA:CA	3:G:257:VAL:CG2[3.675]	1.48	0.72
3:G:270:ALA:C	3:G:271:ALA:CA[2.765]	1.48	0.72
3:G:270:ALA:O	3:G:271:ALA:CB[2.765]	1.48	0.72
3:G:8:ARG:O	3:G:245:LYS:N[2.765]	1.49	0.71
3:G:85:VAL:CB	3:G:221:THR:N[3.675]	1.49	0.71
3:G:257:VAL:O	3:G:260:LYS:CE[3.675]	1.49	0.71
3:G:5:ASP:CB	3:G:250:PHE:CA[2.765]	1.50	0.70
3:G:262:LEU:CB	3:G:264:GLU:OE2[3.675]	1.50	0.70
3:G:9:ARG:NH2	3:G:246:LEU:CB[3.675]	1.51	0.69
3:G:87:LYS:CB	3:G:222:THR:CG2[3.675]	1.51	0.69
2:B:387[A]:ILE:CG2	3:G:15:ASN:CA[2.765]	1.52	0.68
3:G:15:ASN:ND2	3:G:237:LYS:O[2.765]	1.52	0.68
3:G:262:LEU:C	3:G:263:ILE:CG2[2.765]	1.52	0.68
3:G:263:ILE:CG2	3:G:264:GLU:CB[2.765]	1.52	0.68
3:G:266:ILE:CA	3:G:267:SER:CB[3.675]	1.52	0.68
2:B:395[A]:GLU:CA	3:G:229:MET:O[3.675]	1.53	0.67
3:G:81:ILE:O	3:G:224:GLU:OE1[3.675]	1.53	0.67
3:G:263:ILE:CD1	3:G:264:GLU:CD[2.765]	1.53	0.67
3:G:263:ILE:CD1	3:G:264:GLU:OE2[2.765]	1.53	0.67
3:G:5:ASP:C	3:G:249:THR:N[2.765]	1.54	0.66
3:G:8:ARG:CA	3:G:245:LYS:N[2.765]	1.54	0.66
3:G:84:SER:C	3:G:221:THR:O[3.675]	1.54	0.66
3:G:84:SER:O	3:G:222:THR:N[3.675]	1.54	0.66
3:G:212:ILE:CG2	3:G:213:ILE:CB[3.675]	1.54	0.66
3:G:259:THR:C	3:G:261:GLU:CA[3.675]	1.54	0.66
3:G:266:ILE:CB	3:G:267:SER:N[3.675]	1.54	0.66
2:B:387[A]:ILE:CA	3:G:239:ALA:N[3.675]	1.55	0.65
3:G:5:ASP:N	3:G:248:LEU:C[2.765]	1.55	0.65
3:G:82:HIS:C	3:G:224:GLU:CA[3.675]	1.55	0.65
3:G:266:ILE:CA	3:G:267:SER:C[3.675]	1.55	0.65
2:B:390[A]:ILE:N	3:G:235:ALA:O[3.675]	1.56	0.64
3:G:4:LYS:N	3:G:252:ARG:CB[2.765]	1.56	0.64
3:G:258:ILE:O	3:G:264:GLU:OE2[3.675]	1.56	0.64
3:G:84:SER:C	3:G:221:THR:C[3.675]	1.57	0.63
3:G:86:ALA:N	3:G:220:SER:O[3.675]	1.57	0.63

*Continued on next page...*



*Continued from previous page...*

Atom-1	Atom-2	Distance(Å)	Clash(Å)
2:B:390[A]:ILE:N	3:G:236:SER:CA[3.675]	1.58	0.62
2:B:394[A]:ASP:N	3:G:24:LYS:CE[3.675]	1.58	0.62
2:B:395[A]:GLU:OE1	3:G:230:THR:O[3.675]	1.58	0.62
3:G:8:ARG:C	3:G:245:LYS:N[2.765]	1.58	0.62
3:G:11:LYS:N	3:G:245:LYS:CG[2.765]	1.58	0.62
3:G:259:THR:C	3:G:260:LYS:CG[2.765]	1.58	0.62
3:G:259:THR:C	3:G:261:GLU:CB[3.675]	1.58	0.62
2:B:386[A]:ASP:CB	3:G:240:SER:N[3.675]	1.59	0.61
3:G:85:VAL:CG2	3:G:220:SER:O[3.675]	1.59	0.61
1:A:406[A]:PHE:CD1	3:G:18:LYS:O[2.765]	1.60	0.60
3:G:85:VAL:CA	3:G:221:THR:N[3.675]	1.60	0.60
2:B:383[A]:SER:O	3:G:15:ASN:ND2[2.765]	1.62	0.58
2:B:388[A]:ILE:CA	3:G:238:ASN:CB[3.675]	1.62	0.58
3:G:83:SER:CA	3:G:224:GLU:C[3.675]	1.62	0.58
3:G:257:VAL:CA	3:G:260:LYS:CE[3.675]	1.62	0.58
3:G:260:LYS:CA	3:G:261:GLU:N[3.675]	1.62	0.58
2:B:386[A]:ASP:C	3:G:240:SER:N[3.675]	1.63	0.57
2:B:388[A]:ILE:N	3:G:238:ASN:N[3.675]	1.63	0.57
3:G:7:THR:C	3:G:245:LYS:O[2.765]	1.63	0.57
3:G:11:LYS:CA	3:G:245:LYS:CG[2.765]	1.63	0.57
3:G:81:ILE:C	3:G:224:GLU:CD[3.675]	1.63	0.57
3:G:84:SER:O	3:G:222:THR:CA[3.675]	1.63	0.57
3:G:262:LEU:CD1	3:G:264:GLU:CB[3.675]	1.63	0.57
3:G:263:ILE:CG1	3:G:264:GLU:CG[2.765]	1.63	0.57
2:B:395[A]:GLU:OE1	3:G:230:THR:C[3.675]	1.64	0.56
3:G:7:THR:C	3:G:245:LYS:C[2.765]	1.64	0.56
3:G:85:VAL:C	3:G:221:THR:N[3.675]	1.64	0.56
2:B:388[A]:ILE:O	3:G:234:ASN:O[3.675]	1.65	0.55
2:B:393[A]:MET:O	3:G:232:MET:C[3.675]	1.65	0.55
3:G:78:CYS:CA	3:G:79:GLY:CA[2.765]	1.65	0.55
3:G:83:SER:O	3:G:223:SER:N[3.675]	1.65	0.55
3:G:262:LEU:N	3:G:263:ILE:CD1[2.765]	1.65	0.55
3:G:5:ASP:N	3:G:249:THR:N[2.765]	1.66	0.54
3:G:11:LYS:N	3:G:245:LYS:CB[2.765]	1.66	0.54
3:G:81:ILE:O	3:G:224:GLU:CD[3.675]	1.66	0.54
3:G:5:ASP:CG	3:G:250:PHE:CA[2.765]	1.67	0.53
3:G:9:ARG:CG	3:G:246:LEU:CB[2.765]	1.67	0.53
3:G:83:SER:OG	3:G:227:ALA:N[3.675]	1.67	0.53
3:G:84:SER:C	3:G:222:THR:N[3.675]	1.67	0.53
3:G:85:VAL:C	3:G:222:THR:N[3.675]	1.67	0.53
3:G:4:LYS:O	3:G:251:ASN:N[2.765]	1.68	0.52
3:G:8:ARG:CA	3:G:245:LYS:C[2.765]	1.68	0.52

*Continued on next page...*

*Continued from previous page...*

Atom-1	Atom-2	Distance(Å)	Clash(Å)
3:G:9:ARG:CB	3:G:246:LEU:CG[2_765]	1.68	0.52
3:G:265:ILE:CA	3:G:267:SER:OG[3_675]	1.68	0.52
3:G:268:GLY:O	3:G:270:ALA:CA[2_765]	1.68	0.52
3:G:270:ALA:O	3:G:271:ALA:N[3_675]	1.68	0.52
2:B:387[A]:ILE:N	3:G:240:SER:N[3_675]	1.69	0.51
3:G:5:ASP:OD2	3:G:250:PHE:CA[2_765]	1.69	0.51
2:B:383[A]:SER:C	3:G:15:ASN:ND2[2_765]	1.70	0.50
3:G:81:ILE:CA	3:G:228:ARG:NH2[3_675]	1.70	0.50
3:G:85:VAL:CA	3:G:222:THR:N[3_675]	1.70	0.50
3:G:256:ALA:O	3:G:260:LYS:CD[2_765]	1.70	0.50
3:G:268:GLY:C	3:G:270:ALA:CB[2_765]	1.70	0.50
3:G:12:SER:N	3:G:241:ASP:C[2_765]	1.71	0.49
3:G:16:ILE:O	3:G:238:ASN:CG[2_765]	1.71	0.49
3:G:80:ALA:CB	3:G:228:ARG:CA[3_675]	1.71	0.49
3:G:85:VAL:C	3:G:220:SER:C[3_675]	1.71	0.49
3:G:262:LEU:O	3:G:263:ILE:CB[2_765]	1.71	0.49
2:B:387[A]:ILE:C	3:G:238:ASN:C[3_675]	1.72	0.48
3:G:262:LEU:CG	3:G:264:GLU:CG[3_675]	1.72	0.48
3:G:85:VAL:N	3:G:222:THR:N[3_675]	1.73	0.47
3:G:259:THR:O	3:G:261:GLU:CB[3_675]	1.73	0.47
3:G:262:LEU:C	3:G:263:ILE:CA[2_765]	1.73	0.47
3:G:269:ALA:C	3:G:270:ALA:CB[2_765]	1.73	0.47
2:B:388[A]:ILE:N	3:G:238:ASN:C[3_675]	1.74	0.46
3:G:5:ASP:N	3:G:248:LEU:O[2_765]	1.74	0.46
3:G:8:ARG:CA	3:G:245:LYS:CA[2_765]	1.74	0.46
3:G:4:LYS:N	3:G:252:ARG:CG[2_765]	1.75	0.45
3:G:7:THR:N	3:G:249:THR:OG1[2_765]	1.75	0.45
3:G:8:ARG:CA	3:G:244:ASP:C[2_765]	1.75	0.45
3:G:78:CYS:CA	3:G:79:GLY:C[2_765]	1.75	0.45
3:G:7:THR:C	3:G:245:LYS:CA[2_765]	1.76	0.44
1:A:406[A]:PHE:CE2	3:G:22:SER:N[2_765]	1.77	0.43
2:B:386[A]:ASP:O	3:G:239:ALA:N[3_675]	1.77	0.43
2:B:388[A]:ILE:CG1	3:G:238:ASN:CB[3_675]	1.77	0.43
3:G:5:ASP:CB	3:G:250:PHE:CB[2_765]	1.77	0.43
3:G:259:THR:O	3:G:261:GLU:CA[3_675]	1.77	0.43
3:G:259:THR:O	3:G:261:GLU:N[3_675]	1.78	0.42
3:G:262:LEU:C	3:G:264:GLU:CA[3_675]	1.78	0.42
3:G:270:ALA:CA	3:G:271:ALA:N[3_675]	1.78	0.42
2:B:392[A]:GLY:C	3:G:232:MET:O[3_675]	1.79	0.41
3:G:4:LYS:O	3:G:251:ASN:C[2_765]	1.79	0.41
3:G:17:GLN:N	3:G:238:ASN:ND2[2_765]	1.79	0.41
3:G:259:THR:CB	3:G:261:GLU:CB[3_675]	1.79	0.41

*Continued on next page...*



*Continued from previous page...*

Atom-1	Atom-2	Distance(Å)	Clash(Å)
3:G:265:ILE:N	3:G:267:SER:OG[3_675]	1.79	0.41
2:B:386[A]:ASP:CB	3:G:240:SER:CB[3_675]	1.80	0.40
2:B:389[A]:ALA:CA	3:G:235:ALA:N[3_675]	1.80	0.40
3:G:5:ASP:CA	3:G:249:THR:N[2_765]	1.80	0.40
3:G:257:VAL:C	3:G:260:LYS:NZ[3_675]	1.80	0.40
2:B:388[A]:ILE:CG1	3:G:19:ILE:CD1[2_765]	1.81	0.39
3:G:8:ARG:N	3:G:245:LYS:CA[2_765]	1.81	0.39
3:G:8:ARG:C	3:G:245:LYS:C[2_765]	1.81	0.39
1:A:409[A]:ASP:N	3:G:26:VAL:CG1[2_765]	1.82	0.38
2:B:387[A]:ILE:O	3:G:237:LYS:CA[3_675]	1.82	0.38
2:B:395[A]:GLU:CB	3:G:234:ASN:N[3_675]	1.82	0.38
3:G:5:ASP:CG	3:G:250:PHE:N[2_765]	1.82	0.38
3:G:8:ARG:NH1	3:G:247:THR:O[2_765]	1.82	0.38
3:G:42:ARG:CZ	3:G:89:MET:C[2_765]	1.82	0.38
3:G:81:ILE:N	3:G:228:ARG:NH1[3_675]	1.82	0.38
3:G:259:THR:CB	3:G:261:GLU:CG[3_675]	1.82	0.38
2:B:386[A]:ASP:CA	3:G:240:SER:N[3_675]	1.83	0.37
3:G:11:LYS:CB	3:G:245:LYS:CG[2_765]	1.83	0.37
2:B:386[A]:ASP:N	3:G:240:SER:CB[3_675]	1.84	0.36
2:B:387[A]:ILE:CB	3:G:15:ASN:CG[2_765]	1.84	0.36
2:B:388[A]:ILE:C	3:G:234:ASN:O[3_675]	1.84	0.36
3:G:82:HIS:N	3:G:224:GLU:CD[3_675]	1.84	0.36
3:G:84:SER:C	3:G:222:THR:CA[3_675]	1.84	0.36
3:G:86:ALA:N	3:G:223:SER:N[3_675]	1.84	0.36
3:G:264:GLU:O	3:G:266:ILE:CB[2_765]	1.84	0.36
3:G:5:ASP:CA	3:G:250:PHE:N[2_765]	1.85	0.35
3:G:8:ARG:C	3:G:246:LEU:N[2_765]	1.85	0.35
3:G:86:ALA:N	3:G:220:SER:C[3_675]	1.85	0.35
3:G:86:ALA:CB	3:G:223:SER:CA[3_675]	1.85	0.35
3:G:259:THR:CG2	3:G:261:GLU:CB[3_675]	1.85	0.35
3:G:259:THR:CG2	3:G:261:GLU:CG[3_675]	1.85	0.35
2:B:387[A]:ILE:C	3:G:237:LYS:C[3_675]	1.86	0.34
3:G:9:ARG:CD	3:G:246:LEU:CB[2_765]	1.86	0.34
3:G:12:SER:CB	3:G:242:MET:CB[2_765]	1.86	0.34
3:G:262:LEU:O	3:G:264:GLU:CB[3_675]	1.86	0.34
2:B:389[A]:ALA:O	3:G:236:SER:N[3_675]	1.87	0.33
2:B:391[A]:LEU:CD2	3:G:17:GLN:CG[3_675]	1.87	0.33
2:B:395[A]:GLU:CG	3:G:234:ASN:N[3_675]	1.87	0.33
3:G:4:LYS:C	3:G:252:ARG:N[2_765]	1.87	0.33
3:G:5:ASP:CA	3:G:247:THR:O[2_765]	1.87	0.33
3:G:16:ILE:CA	3:G:238:ASN:O[2_765]	1.87	0.33
3:G:84:SER:CB	3:G:225:GLN:CB[3_675]	1.87	0.33

*Continued on next page...*

*Continued from previous page...*

Atom-1	Atom-2	Distance(Å)	Clash(Å)
1:A:409[A]:ASP:C	3:G:29:ALA:CB[2.765]	1.88	0.32
2:B:384[A]:LEU:O	3:G:236:SER:C[3.675]	1.88	0.32
2:B:390[A]:ILE:CG1	3:G:235:ALA:O[3.675]	1.88	0.32
3:G:5:ASP:O	3:G:248:LEU:N[2.765]	1.88	0.32
3:G:9:ARG:O	3:G:242:MET:CG[2.765]	1.88	0.32
3:G:12:SER:N	3:G:242:MET:CA[2.765]	1.88	0.32
3:G:85:VAL:CG1	3:G:221:THR:CA[3.675]	1.88	0.32
2:B:387[A]:ILE:CD1	3:G:12:SER:C[2.765]	1.89	0.31
2:B:392[A]:GLY:O	3:G:232:MET:C[3.675]	1.89	0.31
3:G:5:ASP:O	3:G:246:LEU:C[2.765]	1.89	0.31
3:G:12:SER:CB	3:G:242:MET:N[2.765]	1.89	0.31
3:G:82:HIS:C	3:G:224:GLU:O[3.675]	1.89	0.31
3:G:88:GLN:CG	3:G:222:THR:OG1[3.675]	1.89	0.31
3:G:257:VAL:CA	3:G:260:LYS:CD[3.675]	1.89	0.31
2:B:388[A]:ILE:O	3:G:235:ALA:CA[3.675]	1.90	0.30
3:G:34:ALA:CB	3:G:88:GLN:OE1[2.765]	1.90	0.30
3:G:266:ILE:CB	3:G:268:GLY:N[3.675]	1.90	0.30
3:G:8:ARG:C	3:G:245:LYS:CA[2.765]	1.91	0.29
3:G:8:ARG:NH1	3:G:247:THR:C[2.765]	1.91	0.29
3:G:13:ILE:CG1	3:G:242:MET:CE[2.765]	1.91	0.29
3:G:38:LEU:CD2	3:G:88:GLN:O[2.765]	1.91	0.29
3:G:42:ARG:NE	3:G:89:MET:C[2.765]	1.91	0.29
3:G:83:SER:CA	3:G:224:GLU:N[3.675]	1.91	0.29
3:G:86:ALA:O	3:G:219:GLU:O[3.675]	1.91	0.29
3:G:264:GLU:C	3:G:266:ILE:CD1[2.765]	1.91	0.29
2:B:387[A]:ILE:CG2	3:G:15:ASN:CB[2.765]	1.92	0.28
3:G:5:ASP:O	3:G:247:THR:C[2.765]	1.92	0.28
3:G:12:SER:OG	3:G:242:MET:CG[2.765]	1.92	0.28
3:G:80:ALA:CB	3:G:227:ALA:C[3.675]	1.92	0.28
1:A:406[A]:PHE:CB	3:G:19:ILE:O[2.765]	1.93	0.27
2:B:387[A]:ILE:CA	3:G:238:ASN:CA[3.675]	1.93	0.27
3:G:7:THR:OG1	3:G:252:ARG:NH1[2.765]	1.93	0.27
3:G:85:VAL:C	3:G:221:THR:C[3.675]	1.93	0.27
3:G:86:ALA:C	3:G:219:GLU:O[3.675]	1.93	0.27
3:G:87:LYS:CG	3:G:222:THR:CB[3.675]	1.93	0.27
1:A:406[A]:PHE:CE1	3:G:18:LYS:C[2.765]	1.94	0.26
2:B:387[A]:ILE:C	3:G:239:ALA:N[3.675]	1.94	0.26
2:B:387[A]:ILE:CG2	3:G:238:ASN:CA[3.675]	1.94	0.26
3:G:82:HIS:CA	3:G:224:GLU:CG[3.675]	1.94	0.26
3:G:83:SER:C	3:G:222:THR:O[3.675]	1.94	0.26
3:G:86:ALA:CA	3:G:223:SER:OG[3.675]	1.94	0.26
3:G:257:VAL:CB	3:G:260:LYS:NZ[3.675]	1.94	0.26

*Continued on next page...*

*Continued from previous page...*

Atom-1	Atom-2	Distance(Å)	Clash(Å)
3:G:259:THR:C	3:G:261:GLU:CG[3.675]	1.94	0.26
2:B:387[A]:ILE:CD1	3:G:15:ASN:N[2.765]	1.95	0.25
3:G:5:ASP:OD1	3:G:250:PHE:CB[2.765]	1.95	0.25
3:G:82:HIS:C	3:G:224:GLU:C[3.675]	1.95	0.25
3:G:256:ALA:O	3:G:260:LYS:CG[2.765]	1.95	0.25
2:B:384[A]:LEU:O	3:G:237:LYS:CA[3.675]	1.96	0.24
2:B:394[A]:ASP:OD2	3:G:229:MET:CA[3.675]	1.96	0.24
3:G:4:LYS:N	3:G:252:ARG:N[2.765]	1.96	0.24
3:G:6:ILE:CG2	3:G:9:ARG:NH1[3.675]	1.96	0.24
3:G:11:LYS:O	3:G:241:ASP:CB[2.765]	1.96	0.24
3:G:15:ASN:O	3:G:238:ASN:CB[2.765]	1.96	0.24
3:G:81:ILE:C	3:G:224:GLU:OE1[3.675]	1.96	0.24
3:G:82:HIS:CA	3:G:224:GLU:OE2[3.675]	1.96	0.24
3:G:82:HIS:ND1	3:G:224:GLU:OE2[2.765]	1.96	0.24
3:G:83:SER:CA	3:G:224:GLU:CA[3.675]	1.96	0.24
2:B:389[A]:ALA:CA	3:G:235:ALA:C[3.675]	1.97	0.23
2:B:391[A]:LEU:CD1	3:G:17:GLN:N[3.675]	1.97	0.23
2:B:393[A]:MET:CB	3:G:24:LYS:CG[3.675]	1.97	0.23
3:G:9:ARG:N	3:G:246:LEU:CA[2.765]	1.97	0.23
3:G:42:ARG:NH1	3:G:89:MET:C[2.765]	1.97	0.23
3:G:83:SER:N	3:G:225:GLN:N[3.675]	1.97	0.23
3:G:83:SER:C	3:G:225:GLN:N[3.675]	1.97	0.23
3:G:85:VAL:CA	3:G:221:THR:O[3.675]	1.97	0.23
2:B:386[A]:ASP:N	3:G:236:SER:O[3.675]	1.98	0.22
2:B:387[A]:ILE:O	3:G:237:LYS:N[3.675]	1.98	0.22
2:B:393[A]:MET:CA	3:G:232:MET:O[3.675]	1.98	0.22
2:B:395[A]:GLU:CB	3:G:230:THR:O[3.675]	1.98	0.22
3:G:85:VAL:N	3:G:221:THR:CA[3.675]	1.98	0.22
3:G:86:ALA:CA	3:G:219:GLU:O[3.675]	1.98	0.22
3:G:257:VAL:CA	3:G:260:LYS:NZ[3.675]	1.98	0.22
1:A:406[A]:PHE:CD2	3:G:23:MET:N[2.765]	1.99	0.21
2:B:386[A]:ASP:OD2	3:G:239:ALA:O[3.675]	1.99	0.21
2:B:388[A]:ILE:CB	3:G:238:ASN:CB[3.675]	1.99	0.21
2:B:395[A]:GLU:CD	3:G:230:THR:C[3.675]	1.99	0.21
3:G:9:ARG:N	3:G:245:LYS:C[2.765]	1.99	0.21
3:G:15:ASN:O	3:G:238:ASN:ND2[2.765]	1.99	0.21
3:G:16:ILE:CG1	3:G:239:ALA:CA[2.765]	1.99	0.21
3:G:81:ILE:N	3:G:228:ARG:CZ[3.675]	1.99	0.21
1:A:409[A]:ASP:O	3:G:26:VAL:CA[2.765]	2.00	0.20
2:B:386[A]:ASP:CG	3:G:239:ALA:O[3.675]	2.00	0.20
2:B:389[A]:ALA:CB	3:G:233:ASP:O[3.675]	2.00	0.20
2:B:395[A]:GLU:CA	3:G:230:THR:CA[3.675]	2.00	0.20

*Continued on next page...*

*Continued from previous page...*

Atom-1	Atom-2	Distance(Å)	Clash(Å)
3:G:9:ARG:NH2	3:G:246:LEU:CG[3.675]	2.00	0.20
3:G:11:LYS:CB	3:G:241:ASP:O[2.765]	2.00	0.20
2:B:395[A]:GLU:CA	3:G:229:MET:C[3.675]	2.01	0.19
3:G:4:LYS:O	3:G:251:ASN:CA[2.765]	2.01	0.19
3:G:11:LYS:NZ	3:G:241:ASP:OD1[2.765]	2.01	0.19
3:G:78:CYS:SG	3:G:80:ALA:N[2.765]	2.01	0.19
3:G:262:LEU:C	3:G:264:GLU:CG[3.675]	2.01	0.19
3:G:265:ILE:O	3:G:267:SER:CB[3.675]	2.01	0.19
2:B:395[A]:GLU:OE1	3:G:231:ALA:N[3.675]	2.02	0.18
3:G:6:ILE:N	3:G:249:THR:N[2.765]	2.02	0.18
3:G:35:GLU:CD	3:G:90:LYS:O[2.765]	2.02	0.18
3:G:89:MET:CG	3:G:219:GLU:OE2[3.675]	2.02	0.18
3:G:263:ILE:CG2	3:G:265:ILE:N[2.765]	2.02	0.18
2:B:383[A]:SER:O	3:G:237:LYS:O[3.675]	2.03	0.17
2:B:395[A]:GLU:OE2	3:G:234:ASN:C[3.675]	2.03	0.17
3:G:5:ASP:O	3:G:246:LEU:O[2.765]	2.03	0.17
3:G:262:LEU:C	3:G:264:GLU:CB[3.675]	2.03	0.17
3:G:262:LEU:CG	3:G:264:GLU:OE2[3.675]	2.03	0.17
2:B:386[A]:ASP:O	3:G:239:ALA:CA[3.675]	2.04	0.16
2:B:389[A]:ALA:C	3:G:236:SER:CA[3.675]	2.04	0.16
3:G:8:ARG:CA	3:G:244:ASP:O[2.765]	2.04	0.16
3:G:83:SER:CA	3:G:223:SER:C[3.675]	2.04	0.16
3:G:85:VAL:CB	3:G:220:SER:C[3.675]	2.04	0.16
3:G:87:LYS:N	3:G:223:SER:N[3.675]	2.04	0.16
2:B:393[A]:MET:O	3:G:232:MET:O[3.675]	2.05	0.15
3:G:12:SER:OG	3:G:242:MET:CA[2.765]	2.05	0.15
3:G:16:ILE:CD1	3:G:239:ALA:CB[2.765]	2.05	0.15
3:G:42:ARG:CD	3:G:89:MET:O[2.765]	2.05	0.15
3:G:213:ILE:CD1	3:G:216:SER:OG[2.765]	2.05	0.15
3:G:261:GLU:C	3:G:263:ILE:CG1[2.765]	2.05	0.15
2:B:384[A]:LEU:O	3:G:237:LYS:N[3.675]	2.06	0.14
2:B:387[A]:ILE:CB	3:G:15:ASN:ND2[2.765]	2.06	0.14
2:B:387[A]:ILE:CG2	3:G:16:ILE:N[2.765]	2.06	0.14
3:G:5:ASP:N	3:G:249:THR:CA[2.765]	2.06	0.14
3:G:16:ILE:CG1	3:G:239:ALA:N[2.765]	2.06	0.14
3:G:85:VAL:O	3:G:221:THR:N[3.675]	2.06	0.14
3:G:86:ALA:CA	3:G:223:SER:N[3.675]	2.06	0.14
3:G:262:LEU:CD1	3:G:264:GLU:OE1[3.675]	2.06	0.14
2:B:389[A]:ALA:O	3:G:235:ALA:C[3.675]	2.07	0.13
2:B:393[A]:MET:O	3:G:232:MET:CB[3.675]	2.07	0.13
2:B:395[A]:GLU:OE2	3:G:235:ALA:N[3.675]	2.07	0.13
3:G:4:LYS:CA	3:G:252:ARG:CG[2.765]	2.07	0.13

*Continued on next page...*

*Continued from previous page...*

Atom-1	Atom-2	Distance(Å)	Clash(Å)
3:G:6:ILE:N	3:G:249:THR:CA[2_765]	2.07	0.13
3:G:8:ARG:CA	3:G:245:LYS:O[2_765]	2.07	0.13
3:G:83:SER:C	3:G:224:GLU:N[3_675]	2.07	0.13
3:G:260:LYS:O	3:G:262:LEU:N[2_765]	2.07	0.13
1:A:406[A]:PHE:CG	3:G:19:ILE:C[2_765]	2.08	0.12
2:B:387[A]:ILE:N	3:G:239:ALA:N[3_675]	2.08	0.12
2:B:395[A]:GLU:CG	3:G:230:THR:C[3_675]	2.08	0.12
3:G:5:ASP:OD2	3:G:250:PHE:CB[2_765]	2.08	0.12
3:G:16:ILE:N	3:G:238:ASN:C[2_765]	2.08	0.12
3:G:42:ARG:NH2	3:G:89:MET:CG[2_765]	2.08	0.12
3:G:77:LEU:C	3:G:79:GLY:N[2_765]	2.08	0.12
3:G:81:ILE:CA	3:G:228:ARG:CZ[3_675]	2.08	0.12
3:G:259:THR:CG2	3:G:261:GLU:CD[3_675]	2.08	0.12
1:A:409[A]:ASP:CB	3:G:29:ALA:CB[2_765]	2.09	0.11
2:B:389[A]:ALA:C	3:G:235:ALA:CA[3_675]	2.09	0.11
2:B:393[A]:MET:N	3:G:232:MET:O[3_675]	2.09	0.11
2:B:395[A]:GLU:N	3:G:229:MET:C[3_675]	2.09	0.11
3:G:5:ASP:O	3:G:245:LYS:O[2_765]	2.09	0.11
3:G:6:ILE:CB	3:G:9:ARG:NH1[3_675]	2.09	0.11
3:G:6:ILE:CG1	3:G:9:ARG:NH1[3_675]	2.09	0.11
3:G:12:SER:O	3:G:238:ASN:O[2_765]	2.09	0.11
3:G:15:ASN:O	3:G:238:ASN:CA[2_765]	2.09	0.11
3:G:16:ILE:CG1	3:G:238:ASN:O[2_765]	2.09	0.11
3:G:85:VAL:CA	3:G:221:THR:CB[3_675]	2.09	0.11
3:G:85:VAL:C	3:G:220:SER:O[3_675]	2.09	0.11
3:G:88:GLN:N	3:G:222:THR:OG1[3_675]	2.09	0.11
3:G:262:LEU:CB	3:G:264:GLU:CB[3_675]	2.09	0.11
1:A:409[A]:ASP:O	3:G:29:ALA:CB[2_765]	2.10	0.10
2:B:387[A]:ILE:O	3:G:237:LYS:O[3_675]	2.10	0.10
2:B:388[A]:ILE:CD1	3:G:19:ILE:CG1[2_765]	2.10	0.10
3:G:7:THR:O	3:G:245:LYS:C[2_765]	2.10	0.10
3:G:16:ILE:CA	3:G:238:ASN:ND2[2_765]	2.10	0.10
3:G:16:ILE:O	3:G:238:ASN:ND2[2_765]	2.10	0.10
3:G:42:ARG:NH2	3:G:89:MET:O[2_765]	2.10	0.10
3:G:84:SER:N	3:G:225:GLN:CA[3_675]	2.10	0.10
3:G:85:VAL:O	3:G:219:GLU:O[3_675]	2.10	0.10
3:G:85:VAL:CG2	3:G:220:SER:C[3_675]	2.10	0.10
1:A:406[A]:PHE:CE2	3:G:20:THR:C[2_765]	2.11	0.09
2:B:394[A]:ASP:O	3:G:233:ASP:CB[3_675]	2.11	0.09
2:B:395[A]:GLU:O	3:G:230:THR:N[3_675]	2.11	0.09
3:G:5:ASP:OD2	3:G:250:PHE:N[2_765]	2.11	0.09
3:G:7:THR:OG1	3:G:248:LEU:CB[2_765]	2.11	0.09

*Continued on next page...*

*Continued from previous page...*

Atom-1	Atom-2	Distance(Å)	Clash(Å)
3:G:9:ARG:CA	3:G:246:LEU:N[2.765]	2.11	0.09
3:G:9:ARG:NE	3:G:246:LEU:CD2[3.675]	2.11	0.09
3:G:83:SER:CA	3:G:225:GLN:N[3.675]	2.11	0.09
3:G:85:VAL:O	3:G:219:GLU:C[3.675]	2.11	0.09
1:A:406[A]:PHE:CZ	3:G:18:LYS:O[2.765]	2.12	0.08
1:A:408[A]:SER:N	3:G:26:VAL:CG2[2.765]	2.12	0.08
1:A:409[A]:ASP:OD2	3:G:30:LYS:CG[2.765]	2.12	0.08
3:G:7:THR:OG1	3:G:248:LEU:C[2.765]	2.12	0.08
3:G:8:ARG:CG	3:G:244:ASP:O[2.765]	2.12	0.08
3:G:83:SER:CA	3:G:223:SER:O[3.675]	2.12	0.08
3:G:85:VAL:C	3:G:221:THR:CA[3.675]	2.12	0.08
3:G:257:VAL:CG1	3:G:260:LYS:CD[3.675]	2.12	0.08
3:G:5:ASP:CB	3:G:251:ASN:N[2.765]	2.13	0.07
3:G:12:SER:CB	3:G:242:MET:CA[2.765]	2.13	0.07
3:G:257:VAL:O	3:G:260:LYS:CB[3.675]	2.13	0.07
1:A:406[A]:PHE:CE2	3:G:20:THR:O[2.765]	2.14	0.06
2:B:383[A]:SER:CB	3:G:15:ASN:OD1[2.765]	2.14	0.06
2:B:386[A]:ASP:CG	3:G:240:SER:CA[3.675]	2.14	0.06
3:G:4:LYS:O	3:G:250:PHE:C[2.765]	2.14	0.06
3:G:5:ASP:O	3:G:247:THR:N[2.765]	2.14	0.06
3:G:8:ARG:CG	3:G:248:LEU:N[2.765]	2.14	0.06
3:G:87:LYS:CD	3:G:222:THR:CG2[3.675]	2.14	0.06
2:B:386[A]:ASP:C	3:G:239:ALA:N[3.675]	2.15	0.05
2:B:389[A]:ALA:O	3:G:235:ALA:CB[3.675]	2.15	0.05
2:B:389[A]:ALA:CB	3:G:236:SER:N[3.675]	2.15	0.05
2:B:393[A]:MET:CA	3:G:24:LYS:CD[3.675]	2.15	0.05
2:B:393[A]:MET:O	3:G:232:MET:CA[3.675]	2.15	0.05
3:G:12:SER:CB	3:G:239:ALA:O[2.765]	2.15	0.05
3:G:16:ILE:CG1	3:G:238:ASN:C[2.765]	2.15	0.05
3:G:82:HIS:CA	3:G:224:GLU:CD[3.675]	2.15	0.05
3:G:83:SER:N	3:G:224:GLU:N[3.675]	2.15	0.05
3:G:84:SER:O	3:G:221:THR:C[3.675]	2.15	0.05
3:G:89:MET:CE	3:G:219:GLU:OE1[3.675]	2.15	0.05
1:A:409[A]:ASP:O	3:G:25:MET:O[2.765]	2.16	0.04
2:B:389[A]:ALA:N	3:G:237:LYS:N[3.675]	2.16	0.04
3:G:5:ASP:CB	3:G:250:PHE:C[2.765]	2.16	0.04
3:G:6:ILE:N	3:G:249:THR:CB[2.765]	2.16	0.04
3:G:81:ILE:CG1	3:G:224:GLU:OE1[3.675]	2.16	0.04
3:G:83:SER:CB	3:G:226:SER:CA[3.675]	2.16	0.04
3:G:87:LYS:NZ	3:G:229:MET:CE[3.675]	2.16	0.04
3:G:259:THR:CA	3:G:261:GLU:CA[3.675]	2.16	0.04
2:B:386[A]:ASP:C	3:G:239:ALA:C[3.675]	2.17	0.03

*Continued on next page...*



Continued from previous page...

Atom-1	Atom-2	Distance(Å)	Clash(Å)
2:B:386[A]:ASP:O	3:G:239:ALA:CB[3.675]	2.17	0.03
2:B:389[A]:ALA:CB	3:G:233:ASP:C[3.675]	2.17	0.03
2:B:393[A]:MET:CB	3:G:24:LYS:CE[3.675]	2.17	0.03
3:G:6:ILE:O	3:G:246:LEU:N[2.765]	2.17	0.03
3:G:8:ARG:O	3:G:241:ASP:O[2.765]	2.17	0.03
3:G:8:ARG:CB	3:G:247:THR:N[2.765]	2.17	0.03
3:G:87:LYS:N	3:G:222:THR:CB[3.675]	2.17	0.03
3:G:88:GLN:N	3:G:222:THR:CB[3.675]	2.17	0.03
3:G:256:ALA:O	3:G:260:LYS:CB[2.765]	2.17	0.03
3:G:262:LEU:CA	3:G:264:GLU:CD[3.675]	2.17	0.03
2:B:388[A]:ILE:CG2	3:G:19:ILE:CG1[2.765]	2.18	0.02
2:B:390[A]:ILE:CA	3:G:235:ALA:O[3.675]	2.18	0.02
3:G:9:ARG:N	3:G:242:MET:O[2.765]	2.18	0.02
3:G:11:LYS:C	3:G:241:ASP:CB[2.765]	2.18	0.02
3:G:11:LYS:CG	3:G:241:ASP:OD2[2.765]	2.18	0.02
3:G:80:ALA:CA	3:G:227:ALA:CB[3.675]	2.18	0.02
2:B:387[A]:ILE:O	3:G:238:ASN:CA[3.675]	2.19	0.01
2:B:393[A]:MET:CG	3:G:24:LYS:CB[3.675]	2.19	0.01
3:G:5:ASP:CA	3:G:248:LEU:C[2.765]	2.19	0.01
3:G:7:THR:N	3:G:245:LYS:O[2.765]	2.19	0.01
3:G:8:ARG:O	3:G:242:MET:C[2.765]	2.19	0.01
3:G:262:LEU:O	3:G:264:GLU:C[3.675]	2.19	0.01
1:A:409[A]:ASP:CA	3:G:29:ALA:CB[2.765]	2.20	0.00
2:B:387[A]:ILE:CB	3:G:15:ASN:CA[2.765]	2.20	0.00
3:G:42:ARG:NH2	3:G:89:MET:CB[2.765]	2.20	0.00
3:G:83:SER:O	3:G:224:GLU:N[3.675]	2.20	0.00
3:G:262:LEU:CG	3:G:264:GLU:CB[3.675]	2.20	0.00
3:G:266:ILE:CA	3:G:268:GLY:N[3.675]	2.20	0.00

## 5.3 Torsion angles

### 5.3.1 Protein backbone ⓘ

In the following table, the Percentiles column shows the percent Ramachandran outliers of the chain as a percentile score with respect to all X-ray entries followed by that with respect to entries of similar resolution. The Analysed column shows the number of residues for which the backbone conformation was analysed, and the total number of residues.

Mol	Chain	Analysed	Favoured	Allowed	Outliers	Percentiles
1	A	478/510 (94%)	354 (74%)	85 (18%)	39 (8%)	1 6
2	B	467/479 (98%)	316 (68%)	104 (22%)	47 (10%)	1 4

Continued on next page...

*Continued from previous page...*

Mol	Chain	Analysed	Favoured	Allowed	Outliers	Percentiles	
3	G	118/273 (43%)	92 (78%)	22 (19%)	4 (3%)	6	31
All	All	1063/1262 (84%)	762 (72%)	211 (20%)	90 (8%)	1	6

All (90) Ramachandran outliers are listed below:

Mol	Chain	Res	Type
1	A	50	GLU
1	A	80	LYS
1	A	92	GLY
1	A	109	ASP
1	A	134	PRO
1	A	187	LYS
1	A	208	GLN
1	A	236	ALA
1	A	295	PRO
1	A	338	ILE
1	A	357	PHE
1	A	404[A]	ALA
1	A	408[A]	SER
1	A	437	ALA
1	A	454	ASP
1	A	455	LYS
1	A	458	PRO
1	A	459	SER
2	B	53	LEU
2	B	71	ARG
2	B	97	VAL
2	B	138	LYS
2	B	188	GLU
2	B	210	ASP
2	B	211	ALA
2	B	279	VAL
2	B	281	TYR
2	B	323	ALA
2	B	331	ALA
2	B	418	PHE
2	B	429	GLY
2	B	435	LYS
2	B	453	PRO
3	G	5	ASP
3	G	80	ALA
1	A	84	GLU

*Continued on next page...*



*Continued from previous page...*

Mol	Chain	Res	Type
1	A	95	VAL
1	A	153	VAL
1	A	194	ASP
1	A	451	GLY
2	B	205	VAL
2	B	245	ASP
2	B	246	GLN
2	B	248	GLY
2	B	269	SER
2	B	288	ASP
2	B	423	VAL
2	B	440	GLY
2	B	451	HIS
1	A	44	LEU
1	A	116	ASP
1	A	151	LYS
1	A	193	THR
1	A	346	THR
1	A	405[A]	GLN
2	B	68	GLY
2	B	124	ILE
2	B	143	LEU
2	B	291	THR
2	B	344	ILE
2	B	391[A]	LEU
2	B	394[A]	ASP
2	B	397[A]	SER
2	B	433	PRO
3	G	34	ALA
1	A	72	GLY
1	A	172	GLN
1	A	188	ARG
1	A	199	LEU
1	A	432	GLN
2	B	105	ARG
2	B	326	PHE
2	B	431	LEU
2	B	432	VAL
3	G	43	VAL
1	A	492	GLN
2	B	171	ASN
2	B	204	GLY

*Continued on next page...*

*Continued from previous page...*

Mol	Chain	Res	Type
2	B	393[A]	MET
2	B	420	VAL
1	A	361	ILE
1	A	373	ARG
2	B	357	ILE
2	B	390[A]	ILE
1	A	140	ILE
2	B	28	GLY
2	B	444	ILE
2	B	290	GLY
1	A	422	VAL
2	B	350	PRO

### 5.3.2 Protein sidechains ⓘ

In the following table, the Percentiles column shows the percent sidechain outliers of the chain as a percentile score with respect to all X-ray entries followed by that with respect to entries of similar resolution. The Analysed column shows the number of residues for which the sidechain conformation was analysed, and the total number of residues.

Mol	Chain	Analysed	Rotameric	Outliers	Percentiles	
1	A	392/416 (94%)	354 (90%)	38 (10%)	12	42
2	B	377/384 (98%)	330 (88%)	47 (12%)	7	28
3	G	103/230 (45%)	88 (85%)	15 (15%)	5	21
All	All	872/1030 (85%)	772 (88%)	100 (12%)	8	32

All (100) residues with a non-rotameric sidechain are listed below:

Mol	Chain	Res	Type
1	A	45	ARG
1	A	50	GLU
1	A	81	LEU
1	A	83	LYS
1	A	111	LEU
1	A	113	ASN
1	A	137	ILE
1	A	144	GLU
1	A	178	ILE
1	A	189	PHE
1	A	191	ASP

*Continued on next page...*

*Continued from previous page...*

Mol	Chain	Res	Type
1	A	212	THR
1	A	226	MET
1	A	231	VAL
1	A	233	SER
1	A	237	SER
1	A	251	CYS
1	A	269	ASP
1	A	291	ARG
1	A	292	GLU
1	A	313	ASN
1	A	316	PHE
1	A	328	GLU
1	A	339	PRO
1	A	347	ASP
1	A	349	GLN
1	A	358	TYR
1	A	362	ARG
1	A	392	LEU
1	A	400[A]	VAL
1	A	408[A]	SER
1	A	432	GLN
1	A	434	SER
1	A	439	GLU
1	A	446	TYR
1	A	457	GLU
1	A	492	GLN
1	A	499	GLU
2	B	12	GLN
2	B	31	PRO
2	B	58	VAL
2	B	66	THR
2	B	83	LYS
2	B	89	GLU
2	B	96	ASN
2	B	97	VAL
2	B	105	ARG
2	B	112	GLN
2	B	113	PHE
2	B	125	GLU
2	B	126	MET
2	B	143	LEU
2	B	148	LYS

*Continued on next page...*

*Continued from previous page...*

Mol	Chain	Res	Type
2	B	164	VAL
2	B	168	GLU
2	B	212	THR
2	B	214	LYS
2	B	246	GLN
2	B	249	GLN
2	B	250	ASP
2	B	252	LEU
2	B	259	PHE
2	B	271	LEU
2	B	284	THR
2	B	292	MET
2	B	305	THR
2	B	329	LEU
2	B	341	GLU
2	B	349	ASP
2	B	352	ASP
2	B	359	ASP
2	B	362	ILE
2	B	368	TYR
2	B	372	ARG
2	B	380[A]	ASP
2	B	412	ARG
2	B	419	GLN
2	B	425	THR
2	B	441	PHE
2	B	448	ASP
2	B	449	TYR
2	B	453	PRO
2	B	457	PHE
2	B	471	ASP
2	B	475	GLU
3	G	5	ASP
3	G	7	THR
3	G	10	LEU
3	G	31	TYR
3	G	33	ARG
3	G	211	ASN
3	G	214	TYR
3	G	229	MET
3	G	232	MET
3	G	237	LYS

*Continued on next page...*

*Continued from previous page...*

Mol	Chain	Res	Type
3	G	240	SER
3	G	241	ASP
3	G	246	LEU
3	G	262	LEU
3	G	272	LEU

Some sidechains can be flipped to improve hydrogen bonding and reduce clashes. All (23) such sidechains are listed below:

Mol	Chain	Res	Type
1	A	78	ASN
1	A	113	ASN
1	A	190	ASN
1	A	208	GLN
1	A	215	GLN
1	A	260	ASN
1	A	341	ASN
1	A	471	HIS
1	A	477	GLN
1	A	492	GLN
2	B	12	GLN
2	B	24	GLN
2	B	39	GLN
2	B	96	ASN
2	B	112	GLN
2	B	130	GLN
2	B	207	ASN
2	B	246	GLN
2	B	249	GLN
2	B	308	GLN
2	B	419	GLN
3	G	88	GLN
3	G	255	GLN

### 5.3.3 RNA ⓘ

There are no RNA chains in this entry.

## 5.4 Non-standard residues in protein, DNA, RNA chains ⓘ

There are no non-standard protein/DNA/RNA residues in this entry.

## 5.5 Carbohydrates

There are no carbohydrates in this entry.

## 5.6 Ligand geometry

Of 5 ligands modelled in this entry, 2 are monoatomic - leaving 3 for Mogul analysis.

In the following table, the Counts columns list the number of bonds (or angles) for which Mogul statistics could be retrieved, the number of bonds (or angles) that are observed in the model and the number of bonds (or angles) that are defined in the chemical component dictionary. The Link column lists molecule types, if any, to which the group is linked. The Z score for a bond length (or angle) is the number of standard deviations the observed value is removed from the expected value. A bond length (or angle) with  $|Z| > 2$  is considered an outlier worth inspection. RMSZ is the root-mean-square of all Z scores of the bond lengths (or angles).

Mol	Type	Chain	Res	Link	Bond lengths			Bond angles		
					Counts	RMSZ	# Z  > 2	Counts	RMSZ	# Z  > 2
6	ATP	A	603	5	33,33,33	2.32	10 (30%)	52,52,52	3.28	18 (34%)
4	VO4	B	601	2,5,7	4,4,4	3.29	1 (25%)	0,6,6	0.00	-
7	ADP	B	604	5,4	29,29,29	1.57	5 (17%)	45,45,45	1.73	6 (13%)

In the following table, the Chirals column lists the number of chiral outliers, the number of chiral centers analysed, the number of these observed in the model and the number defined in the chemical component dictionary. Similar counts are reported in the Torsion and Rings columns. '-' means no outliers of that kind were identified.

Mol	Type	Chain	Res	Link	Chirals	Torsions	Rings
6	ATP	A	603	5	-	0/22/38/38	0/1/3/3
4	VO4	B	601	2,5,7	-	0/0/0/0	0/0/0/0
7	ADP	B	604	5,4	-	0/16/32/32	0/1/3/3

All (16) bond length outliers are listed below:

Mol	Chain	Res	Type	Atoms	Z	Observed(Å)	Ideal(Å)
6	A	603	ATP	C4-N3	6.63	1.45	1.35
4	B	601	VO4	O4-V	6.49	2.29	1.71
6	A	603	ATP	C2-N1	5.54	1.44	1.33
6	A	603	ATP	C2-N3	4.83	1.41	1.32
7	B	604	ADP	C2-N1	3.50	1.40	1.33
6	A	603	ATP	PG-O3B	3.38	1.66	1.60
6	A	603	ATP	O4'-C4'	-3.36	1.37	1.45
7	B	604	ADP	C8-N9	2.79	1.40	1.36
7	B	604	ADP	O4'-C1'	2.70	1.45	1.41

*Continued on next page...*

*Continued from previous page...*

Mol	Chain	Res	Type	Atoms	Z	Observed(Å)	Ideal(Å)
6	A	603	ATP	C5-C4	2.61	1.46	1.40
6	A	603	ATP	C8-N9	2.55	1.40	1.36
7	B	604	ADP	PB-O2B	-2.48	1.45	1.54
6	A	603	ATP	C5'-C4'	2.21	1.58	1.51
7	B	604	ADP	C1'-N9	2.20	1.55	1.48
6	A	603	ATP	O5'-C5'	-2.12	1.36	1.44
6	A	603	ATP	C4-N9	-2.04	1.34	1.37

All (24) bond angle outliers are listed below:

Mol	Chain	Res	Type	Atoms	Z	Observed(°)	Ideal(°)
6	A	603	ATP	O4'-C1'-N9	-14.74	94.73	108.44
6	A	603	ATP	N3-C2-N1	-12.96	117.87	128.71
7	B	604	ADP	N3-C2-N1	-5.92	123.76	128.71
7	B	604	ADP	O4'-C1'-N9	5.81	113.84	108.44
6	A	603	ATP	C4'-O4'-C1'	4.79	114.95	109.75
6	A	603	ATP	C2'-C1'-N9	3.86	123.17	113.27
6	A	603	ATP	N3-C4-N9	3.67	132.05	125.43
6	A	603	ATP	C4-C5-N7	-3.56	106.47	109.52
6	A	603	ATP	C8-N9-C4	3.25	109.38	106.90
6	A	603	ATP	N6-C6-N1	-3.14	113.20	119.36
7	B	604	ADP	C4'-O4'-C1'	2.83	112.82	109.75
7	B	604	ADP	C2-N1-C6	2.79	123.81	118.77
6	A	603	ATP	PB-O3B-PG	-2.71	123.74	131.68
6	A	603	ATP	O2'-C2'-C3'	2.52	120.05	111.83
6	A	603	ATP	C5-C6-N6	2.46	126.29	120.72
6	A	603	ATP	C2-N3-C4	2.46	121.02	114.01
6	A	603	ATP	O5'-C5'-C4'	2.44	117.89	108.94
6	A	603	ATP	C3'-C2'-C1'	2.42	104.69	100.91
6	A	603	ATP	N7-C8-N9	-2.30	107.86	114.36
6	A	603	ATP	C8-N7-C5	2.28	110.65	103.58
7	B	604	ADP	C5-C6-N6	2.20	125.70	120.72
6	A	603	ATP	O3'-C3'-C4'	-2.05	105.05	111.08
7	B	604	ADP	C4-C5-N7	2.04	111.27	109.52
6	A	603	ATP	C2-N1-C6	2.02	122.42	118.77

There are no chirality outliers.

There are no torsion outliers.

There are no ring outliers.

## 5.7 Other polymers ⓘ

There are no such residues in this entry.

## 5.8 Polymer linkage issues

There are no chain breaks in this entry.



## 6 Fit of model and data ⓘ

### 6.1 Protein, DNA and RNA chains ⓘ

In the following table, the column labelled ‘#RSRZ> 2’ contains the number (and percentage) of RSRZ outliers, followed by percent RSRZ outliers for the chain as percentile scores relative to all X-ray entries and entries of similar resolution. The OWAB column contains the minimum, median, 95<sup>th</sup> percentile and maximum values of the occupancy-weighted average B-factor per residue. The column labelled ‘Q< 0.9’ lists the number of (and percentage) of residues with an average occupancy less than 0.9.

Mol	Chain	Analysed	<RSRZ>	#RSRZ>2	OWAB(Å <sup>2</sup> )	Q<0.9
1	A	480/510 (94%)	0.01	4 (0%) 83 26	23, 68, 124, 141	13 (2%)
2	B	471/479 (98%)	0.09	17 (3%) 41 8	13, 62, 116, 136	21 (4%)
3	G	124/273 (45%)	1.27	27 (21%) 1 1	11, 42, 58, 60	124 (100%)
All	All	1075/1262 (85%)	0.19	48 (4%) 32 7	11, 60, 120, 141	158 (14%)

All (48) RSRZ outliers are listed below:

Mol	Chain	Res	Type	RSRZ
3	G	32	ALA	6.3
3	G	209	LEU	6.3
3	G	48	SER	5.2
3	G	31	TYR	3.9
3	G	20	THR	3.7
3	G	43	VAL	3.7
3	G	44	TYR	3.7
3	G	47	GLY	3.6
3	G	41	ALA	3.5
3	G	30	LYS	3.2
2	B	431	LEU	3.2
3	G	36	ARG	3.2
2	B	399[A]	GLU	3.1
1	A	475	GLN	3.1
2	B	5	LYS	3.1
2	B	475	GLU	3.0
2	B	376	LYS	2.9
3	G	25	MET	2.8
3	G	40	PRO	2.8
3	G	24	LYS	2.7
2	B	439	LYS	2.7
3	G	35	GLU	2.7
3	G	33	ARG	2.6

*Continued on next page...*

*Continued from previous page...*

Mol	Chain	Res	Type	RSRZ
3	G	18	LYS	2.6
2	B	398[A]	GLU	2.6
3	G	46	THR	2.5
2	B	476	GLU	2.5
2	B	432	VAL	2.5
3	G	223	SER	2.5
1	A	413	ALA	2.4
2	B	8	THR	2.4
3	G	268	GLY	2.4
1	A	452	TYR	2.4
2	B	7	GLY	2.3
3	G	23	MET	2.3
2	B	477	HIS	2.3
2	B	451	HIS	2.3
3	G	86	ALA	2.3
3	G	17	GLN	2.2
3	G	227	ALA	2.2
3	G	90	LYS	2.1
3	G	253	THR	2.1
1	A	486	ASP	2.1
2	B	6	ALA	2.1
3	G	22	SER	2.1
2	B	338	ALA	2.1
2	B	445	LEU	2.0
2	B	407	ALA	2.0

## 6.2 Non-standard residues in protein, DNA, RNA chains ⓘ

There are no non-standard protein/DNA/RNA residues in this entry.

## 6.3 Carbohydrates ⓘ

There are no carbohydrates in this entry.

## 6.4 Ligands ⓘ

In the following table, the Atoms column lists the number of modelled atoms in the group and the number defined in the chemical component dictionary. LLDF column lists the quality of electron density of the group with respect to its neighbouring residues in protein, DNA or RNA chains. The B-factors column lists the minimum, median, 95<sup>th</sup> percentile and maximum values of B factors

of atoms in the group. The column labelled 'Q < 0.9' lists the number of atoms with occupancy less than 0.9.

Mol	Type	Chain	Res	Atoms	RSR	LLDF	B-factors( $\text{\AA}^2$ )	Q<0.9
5	MG	A	602	1/1	0.38	10.57	55,55,55,55	0
4	VO4	B	601	5/5	0.45	2.62	43,44,45,48	0
7	ADP	B	604	27/27	0.29	-0.08	97,100,102,102	0
6	ATP	A	603	31/31	0.21	-0.53	57,68,73,74	0
5	MG	B	605	1/1	0.24	-0.60	40,40,40,40	0

## 6.5 Other polymers ⓘ

There are no such residues in this entry.