



Full wwPDB X-ray Structure Validation Report

Feb 27, 2014 – 01:08 PM GMT

PDB ID : 1F5A
Title : CRYSTAL STRUCTURE OF MAMMALIAN POLY(A) POLYMERASE
Authors : Martin, G.; Keller, W.; Doublié, S.
Deposited on : 2000-06-13
Resolution : 2.50 Å(reported)

This is a full wwPDB validation report for a publicly released PDB entry.
We welcome your comments at validation@mail.wwpdb.org
A user guide is available at <http://wwpdb.org/ValidationPDFNotes.html>

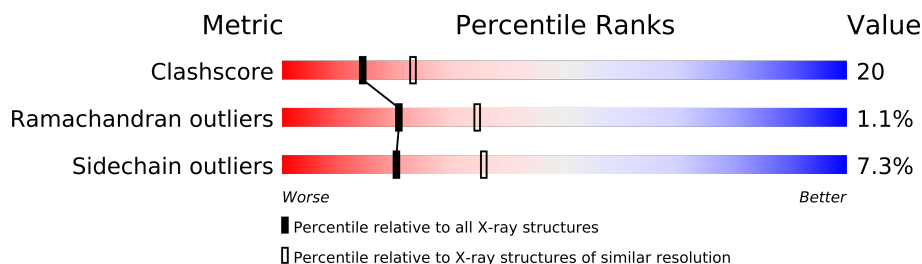
The following versions of software and data (see [references](#)) were used in the production of this report:

MolProbity : 4.02b-467
Mogul : 1.15 2013
Xtriage (Phenix) : **NOT EXECUTED**
EDS : **NOT EXECUTED**
Percentile statistics : 21963
Ideal geometry (proteins) : Engh & Huber (2001)
Ideal geometry (DNA, RNA) : Parkinson et. al. (1996)
Validation Pipeline (wwPDB-VP) : stable22683

1 Overall quality at a glance

The reported resolution of this entry is 2.50 Å.


Percentile scores (ranging between 0-100) for global validation metrics of the entry are shown in the following graphic. The table shows the number of entries on which the scores are based.



Metric	Whole archive (#Entries)	Similar resolution (#Entries, resolution range(Å))
Clashscore	79885	3562 (2.50-2.50)
Ramachandran outliers	78287	3480 (2.50-2.50)
Sidechain outliers	78261	3482 (2.50-2.50)

The table below summarises the geometric issues observed across the polymeric chains and their fit to the electron density. The red, orange, yellow and green segments on the lower bar indicate the fraction of residues that contain outliers for ≥ 3 , 2, 1 and 0 types of geometric quality criteria. The upper red bar (where present) indicates the fraction of residues that have poor fit to the electron density.

Note EDS was not executed.

Mol	Chain	Length	Quality of chain
1	A	513	

2 Entry composition

There are 5 unique types of molecules in this entry. The entry contains 3946 atoms, of which 0 are hydrogen and 0 are deuterium.

In the tables below, the ZeroOcc column contains the number of atoms modelled with zero occupancy, the AltConf column contains the number of residues with at least one atom in alternate conformation and the Trace column contains the number of residues modelled with at most 2 atoms.

- Molecule 1 is a protein called POLY(A) POLYMERASE.

Mol	Chain	Residues	Atoms						ZeroOcc	AltConf	Trace
1	A	463	Total	C	N	O	S	Se	0	0	0
			3730	2420	628	669	7	6			

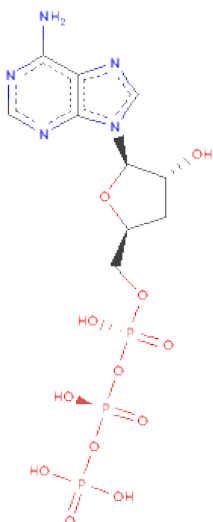
There are 9 discrepancies between the modelled and reference sequences:

Chain	Residue	Modelled	Actual	Comment	Reference
A	1	MSE	MET	MODIFIED	UNP P25500
A	251	MSE	MET	MODIFIED	UNP P25500
A	313	MSE	MET	MODIFIED	UNP P25500
A	335	MSE	MET	MODIFIED	UNP P25500
A	337	MSE	MET	MODIFIED	UNP P25500
A	436	MSE	MET	MODIFIED	UNP P25500
A	476	MSE	MET	MODIFIED	UNP P25500
A	481	MSE	MET	MODIFIED	UNP P25500
A	486	MSE	MET	MODIFIED	UNP P25500

- Molecule 2 is MANGANESE (II) ION (three-letter code: MN) (formula: Mn).

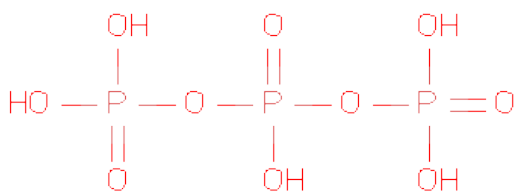
Mol	Chain	Residues	Atoms		ZeroOcc	AltConf
2	A	3	Total	Mn	0	0
			3	3		

- Molecule 3 is 3'-DEOXYADENOSINE-5'-TRIPHOSPHATE (three-letter code: 3AT) (formula: C₁₀H₁₆N₅O₁₂P₃).



Mol	Chain	Residues	Atoms					ZeroOcc	AltConf
3	A	1	Total	C	N	O	P	0	0
			30	10	5	12	3		

- Molecule 4 is TRIPHOSPHATE (three-letter code: 3PO) (formula: $\text{H}_5\text{O}_{10}\text{P}_3$).



Mol	Chain	Residues	Atoms		ZeroOcc	AltConf
4	A	1	Total	O P	0	0
			13	10 3		

- Molecule 5 is water.

Mol	Chain	Residues	Atoms		ZeroOcc	AltConf
5	A	170	Total 170	O 170	0	0

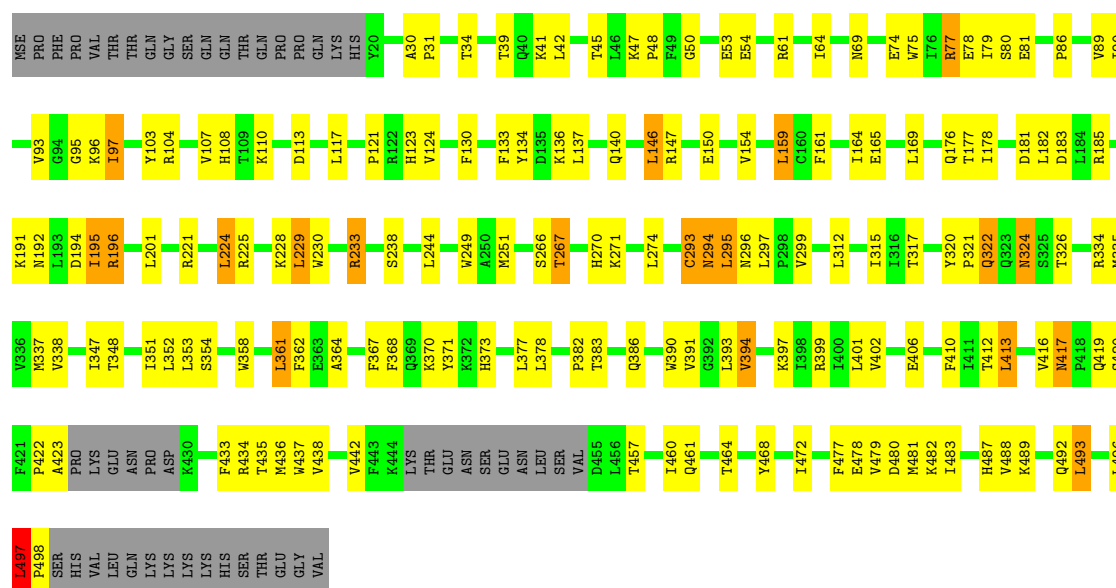
3 Residue-property plots

These plots are drawn for all protein, RNA and DNA chains in the entry. The first graphic for a chain summarises the proportions of errors displayed in the second graphic. The second graphic shows the sequence view annotated by issues in geometry and electron density. Residues are color-coded according to the number of geometric quality criteria for which they contain at least one outlier: green = 0, yellow = 1, orange = 2 and red = 3 or more. A red dot above a residue indicates a poor fit to the electron density ($RSRZ > 2$). Stretches of 2 or more consecutive residues without any outlier are shown as a green connector. Residues present in the sample, but not in the model, are shown in grey.

Note EDS was not executed.

• Molecule 1: POLY(A) POLYMERASE

Chain A: 



4 Data and refinement statistics

Xtriage (Phenix) and EDS were not executed - this section will therefore be incomplete.

Property	Value	Source
Space group	P 21 21 21	Depositor
Cell constants a, b, c, α , β , γ	57.55Å 62.72Å 179.69Å 90.00° 90.00° 90.00°	Depositor
Resolution (Å)	20.00 – 2.50	Depositor
% Data completeness (in resolution range)	(Not available) (20.00-2.50)	Depositor
R_{merge}	0.09	Depositor
R_{sym}	(Not available)	Depositor
Refinement program	CNS 1.0	Depositor
R, R_{free}	0.219 , 0.261	Depositor
Estimated twinning fraction	No twinning to report.	Xtriage
Total number of atoms	3946	wwPDB-VP
Average B, all atoms (Å ²)	29.0	wwPDB-VP

5 Model quality

5.1 Standard geometry

Bond lengths and bond angles in the following residue types are not validated in this section: MN, 3PO, 3AT

The Z score for a bond length (or angle) is the number of standard deviations the observed value is removed from the expected value. A bond length (or angle) with $|Z| > 5$ is considered an outlier worth inspection. RMSZ is the root-mean-square of all Z scores of the bond lengths (or angles).

Mol	Chain	Bond lengths		Bond angles	
		RMSZ	$\# Z > 5$	RMSZ	$\# Z > 5$
1	A	0.38	0/3806	0.64	1/5152 (0.0%)

There are no bond length outliers.

All (1) bond angle outliers are listed below:

Mol	Chain	Res	Type	Atoms	Z	Observed($^{\circ}$)	Ideal($^{\circ}$)
1	A	159	LEU	CA-CB-CG	5.01	126.83	115.30

There are no chirality outliers.

There are no planarity outliers.

5.2 Close contacts

In the following table, the Non-H and H(model) columns list the number of non-hydrogen atoms and hydrogen atoms in the chain respectively. The H(added) column lists the number of hydrogens added by MolProbity. The Clashes column lists the number of clashes within the asymmetric unit, and the number in parentheses is this value normalized per 1000 atoms of the molecule in the chain. The Symm-Clashes column gives symmetry related clashes, in the same way as for the Clashes column.

Mol	Chain	Non-H	H(model)	H(added)	Clashes	Symm-Clashes
1	A	3730	0	3777	148	0
2	A	3	0	0	0	0
3	A	30	0	12	0	0
4	A	13	0	0	0	0
5	A	170	0	0	8	0
All	All	3946	0	3789	148	0

Clashscore is defined as the number of clashes calculated for the entry per 1000 atoms (including

hydrogens) of the entry. The overall clashscore for this entry is 20.

All (148) close contacts within the same asymmetric unit are listed below.

Atom-1	Atom-2	Distance(Å)	Clash(Å)
1:A:335:MSE:HE2	1:A:413:LEU:HD13	1.29	1.10
1:A:478:GLU:H	1:A:481:MSE:HE2	1.22	1.02
1:A:382:PRO:HG2	1:A:386:GLN:HE22	1.28	0.96
1:A:335:MSE:HE1	1:A:412:THR:HG22	1.53	0.88
1:A:61:ARG:NH1	1:A:164:ILE:HD12	1.89	0.87
1:A:399:ARG:HD3	5:A:2176:HOH:O	1.76	0.85
1:A:488:VAL:HG13	1:A:492:GLN:HG3	1.58	0.85
1:A:382:PRO:HG2	1:A:386:GLN:NE2	1.91	0.84
1:A:251:MSE:HE3	1:A:315:ILE:HG22	1.63	0.80
1:A:478:GLU:N	1:A:481:MSE:HE2	1.96	0.80
1:A:497:LEU:HB3	1:A:498:PRO:HD3	1.65	0.78
1:A:61:ARG:HH12	1:A:164:ILE:HD12	1.44	0.76
1:A:75:TRP:CE2	1:A:133:PHE:HB2	2.21	0.76
1:A:195:ILE:HD12	1:A:196:ARG:H	1.50	0.75
1:A:233:ARG:HB3	1:A:233:ARG:HH11	1.51	0.74
1:A:107:VAL:HG21	1:A:224:LEU:HD13	1.70	0.73
1:A:93:VAL:HA	1:A:177:THR:HG22	1.70	0.73
1:A:335:MSE:HE1	1:A:412:THR:CG2	2.21	0.71
1:A:64:ILE:HG23	1:A:161:PHE:CD1	2.26	0.70
1:A:294:ASN:O	1:A:296:ASN:N	2.23	0.70
1:A:39:THR:OG1	1:A:266:SER:HB2	1.92	0.69
1:A:417:ASN:C	1:A:417:ASN:HD22	1.96	0.69
1:A:312:LEU:HB3	1:A:334:ARG:HH21	1.58	0.68
1:A:69:ASN:ND2	1:A:97:ILE:H	1.91	0.68
1:A:47:LYS:HB2	1:A:48:PRO:HD3	1.75	0.68
1:A:417:ASN:ND2	1:A:419:GLN:H	1.92	0.68
1:A:493:LEU:HD22	1:A:497:LEU:HD13	1.76	0.67
1:A:477:PHE:HA	1:A:481:MSE:CE	2.24	0.66
1:A:233:ARG:NH1	1:A:364:ALA:HB2	2.12	0.65
1:A:417:ASN:HD22	1:A:419:GLN:H	1.44	0.64
1:A:270:HIS:HD2	1:A:348:THR:OG1	1.80	0.64
1:A:229:LEU:HD22	1:A:233:ARG:HG2	1.81	0.63
1:A:488:VAL:CG1	1:A:492:GLN:HG3	2.30	0.62
1:A:477:PHE:HA	1:A:481:MSE:HE2	1.82	0.62
1:A:81:GLU:HG3	1:A:90:ILE:HD13	1.82	0.62
1:A:154:VAL:HG11	1:A:169:LEU:HD13	1.80	0.62
1:A:134:TYR:CZ	1:A:146:LEU:HD13	2.35	0.61
1:A:478:GLU:O	1:A:481:MSE:HG3	2.01	0.60
1:A:402:VAL:O	1:A:406:GLU:HG3	2.01	0.60
1:A:30:ALA:HB1	1:A:31:PRO:HD2	1.82	0.60

Continued on next page...

Continued from previous page...

Atom-1	Atom-2	Distance(Å)	Clash(Å)
1:A:373:HIS:HB3	1:A:487:HIS:HE1	1.66	0.60
1:A:89:VAL:O	1:A:93:VAL:HG23	2.01	0.59
1:A:195:ILE:HD12	1:A:196:ARG:N	2.14	0.59
1:A:224:LEU:HD22	1:A:228:LYS:HG3	1.83	0.59
1:A:117:LEU:HD21	1:A:201:LEU:HD23	1.85	0.59
1:A:194:ASP:OD1	1:A:195:ILE:HD12	2.02	0.59
1:A:61:ARG:HH11	1:A:61:ARG:HG2	1.68	0.58
1:A:147:ARG:HA	5:A:2110:HOH:O	2.03	0.58
1:A:478:GLU:H	1:A:481:MSE:CE	2.08	0.57
1:A:312:LEU:HD22	1:A:334:ARG:NH2	2.19	0.57
1:A:390:TRP:O	1:A:394:VAL:HG12	2.03	0.57
1:A:367:PHE:CE2	1:A:417:ASN:HB2	2.40	0.57
1:A:324:ASN:ND2	1:A:326:THR:H	2.03	0.56
1:A:270:HIS:CG	1:A:352:LEU:HD11	2.41	0.56
1:A:50:GLY:O	1:A:110:LYS:HD3	2.04	0.56
1:A:244:LEU:HD13	1:A:337:MSE:HE1	1.87	0.56
1:A:383:THR:HA	1:A:433:PHE:CD2	2.41	0.55
1:A:295:LEU:HD12	1:A:320:TYR:CE2	2.42	0.55
1:A:221:ARG:HG2	1:A:225:ARG:NH1	2.22	0.54
1:A:251:MSE:HE3	1:A:315:ILE:CG2	2.36	0.54
1:A:244:LEU:HD13	1:A:337:MSE:SE	2.57	0.54
1:A:460:ILE:O	1:A:464:THR:HG23	2.09	0.53
1:A:221:ARG:HG2	1:A:225:ARG:HH12	1.73	0.53
1:A:488:VAL:HG12	1:A:489:LYS:O	2.09	0.53
1:A:378:LEU:O	1:A:483:ILE:HA	2.09	0.53
1:A:497:LEU:CB	1:A:498:PRO:HD3	2.37	0.52
1:A:413:LEU:HD23	1:A:442:VAL:HB	1.92	0.52
1:A:312:LEU:CB	1:A:334:ARG:HH21	2.23	0.52
1:A:477:PHE:HA	1:A:481:MSE:HE1	1.92	0.51
1:A:422:PRO:HG3	5:A:2102:HOH:O	2.10	0.51
1:A:165:GLU:HG3	5:A:2123:HOH:O	2.10	0.51
1:A:497:LEU:HB3	1:A:498:PRO:CD	2.31	0.51
1:A:230:TRP:CD1	1:A:361:LEU:HD22	2.45	0.51
1:A:399:ARG:HG3	5:A:2024:HOH:O	2.10	0.51
1:A:297:LEU:CD1	1:A:321:PRO:HG3	2.41	0.51
1:A:457:THR:O	1:A:461:GLN:HB2	2.12	0.50
1:A:334:ARG:O	1:A:338:VAL:HG23	2.12	0.49
1:A:353:LEU:O	1:A:354:SER:HB2	2.13	0.48
1:A:299:VAL:HG13	1:A:322:GLN:HG2	1.95	0.48
1:A:225:ARG:NH1	5:A:2054:HOH:O	2.47	0.48
1:A:416:VAL:HG23	5:A:2048:HOH:O	2.14	0.48
1:A:95:GLY:H	1:A:178:ILE:HB	1.79	0.48

Continued on next page...

Continued from previous page...

Atom-1	Atom-2	Distance(Å)	Clash(Å)
1:A:74:GLU:O	1:A:78:GLU:HG3	2.13	0.48
1:A:31:PRO:HB3	5:A:2014:HOH:O	2.15	0.47
1:A:435:THR:HG22	1:A:436:MSE:N	2.29	0.47
1:A:391:VAL:HG13	1:A:437:TRP:CH2	2.50	0.47
1:A:103:TYR:HA	1:A:108:HIS:HB2	1.96	0.47
1:A:154:VAL:CG1	1:A:169:LEU:HD13	2.44	0.47
1:A:229:LEU:HD13	1:A:362:PHE:CD1	2.50	0.47
1:A:417:ASN:ND2	1:A:417:ASN:C	2.68	0.46
1:A:312:LEU:HB3	1:A:334:ARG:NH2	2.26	0.46
1:A:251:MSE:SE	1:A:317:THR:HA	2.65	0.46
1:A:297:LEU:HD12	1:A:320:TYR:CE2	2.50	0.45
1:A:393:LEU:O	1:A:397:LYS:HG2	2.16	0.45
1:A:391:VAL:HA	1:A:394:VAL:CG1	2.46	0.45
1:A:322:GLN:H	1:A:322:GLN:NE2	2.14	0.45
1:A:79:ILE:HG21	1:A:124:VAL:HG22	1.98	0.45
1:A:130:PHE:CD1	1:A:150:GLU:HB3	2.52	0.45
1:A:423:ALA:CB	1:A:434:ARG:HD3	2.46	0.45
1:A:130:PHE:CE1	1:A:150:GLU:HB3	2.51	0.45
1:A:267:THR:O	1:A:271:LYS:HG2	2.16	0.45
1:A:410:PHE:N	1:A:410:PHE:CD1	2.84	0.45
1:A:75:TRP:HB2	1:A:136:LYS:HE3	1.98	0.45
1:A:136:LYS:O	1:A:140:GLN:HG2	2.18	0.44
1:A:233:ARG:HH12	1:A:364:ALA:N	2.15	0.44
1:A:69:ASN:HD21	1:A:96:LYS:HA	1.82	0.44
1:A:45:THR:HG21	1:A:358:TRP:HB2	2.00	0.44
1:A:423:ALA:HB3	1:A:434:ARG:HD3	2.00	0.44
1:A:468:TYR:OH	1:A:482:LYS:HA	2.18	0.44
1:A:322:GLN:H	1:A:322:GLN:CD	2.21	0.43
1:A:41:LYS:O	1:A:45:THR:HG23	2.19	0.43
1:A:133:PHE:CE2	1:A:137:LEU:HD11	2.54	0.43
1:A:386:GLN:OE1	1:A:478:GLU:HG2	2.18	0.43
1:A:497:LEU:CB	1:A:498:PRO:CD	2.97	0.43
1:A:113:ASP:HB3	1:A:165:GLU:HG2	2.00	0.43
1:A:383:THR:HA	1:A:433:PHE:HD2	1.83	0.43
1:A:297:LEU:HD13	1:A:321:PRO:HG3	2.01	0.43
1:A:93:VAL:HG13	1:A:121:PRO:HG3	2.01	0.43
1:A:370:LYS:HG3	1:A:371:TYR:CD2	2.54	0.43
1:A:191:LYS:O	1:A:192:ASN:HB2	2.18	0.42
1:A:348:THR:O	1:A:352:LEU:HG	2.19	0.42
1:A:383:THR:HA	1:A:433:PHE:CE2	2.55	0.42
1:A:479:VAL:O	1:A:480:ASP:HB2	2.18	0.42
1:A:477:PHE:CA	1:A:481:MSE:HE2	2.49	0.42

Continued on next page...

Continued from previous page...

Atom-1	Atom-2	Distance(Å)	Clash(Å)
1:A:347:ILE:O	1:A:351:ILE:HG13	2.19	0.42
1:A:368:PHE:CE1	1:A:438:VAL:HG21	2.55	0.42
1:A:468:TYR:O	1:A:472:ILE:HG13	2.21	0.41
1:A:61:ARG:HH11	1:A:61:ARG:CG	2.31	0.41
1:A:493:LEU:HD22	1:A:497:LEU:CD1	2.47	0.41
1:A:224:LEU:HD22	1:A:228:LYS:CG	2.49	0.41
1:A:483:ILE:O	1:A:483:ILE:HG23	2.20	0.41
1:A:93:VAL:CG1	1:A:121:PRO:HG3	2.51	0.41
1:A:293:CYS:O	1:A:294:ASN:C	2.59	0.41
1:A:183:ASP:OD1	1:A:185:ARG:HB2	2.20	0.41
1:A:249:TRP:CH2	1:A:337:MSE:HE3	2.55	0.41
1:A:320:TYR:CD1	1:A:321:PRO:HA	2.55	0.41
1:A:413:LEU:CD2	1:A:442:VAL:HB	2.50	0.41
1:A:69:ASN:HD22	1:A:97:ILE:H	1.65	0.41
1:A:86:PRO:HG2	1:A:89:VAL:CG2	2.51	0.41
1:A:64:ILE:HD12	1:A:164:ILE:HG13	2.02	0.41
1:A:368:PHE:HE1	1:A:438:VAL:HG21	1.86	0.41
1:A:472:ILE:HG12	1:A:477:PHE:CD2	2.56	0.40
1:A:244:LEU:HD13	1:A:337:MSE:CE	2.50	0.40
1:A:496:LEU:O	1:A:497:LEU:HD12	2.21	0.40
1:A:420:SER:HB3	1:A:437:TRP:NE1	2.37	0.40
1:A:477:PHE:CD1	1:A:481:MSE:HE2	2.57	0.40
1:A:370:LYS:HG3	1:A:371:TYR:CE2	2.57	0.40
1:A:77:ARG:O	1:A:80:SER:HB2	2.22	0.40

There are no symmetry-related clashes.

5.3 Torsion angles

5.3.1 Protein backbone ⓘ

In the following table, the Percentiles column shows the percent Ramachandran outliers of the chain as a percentile score with respect to all X-ray entries followed by that with respect to entries of similar resolution. The Analysed column shows the number of residues for which the backbone conformation was analysed, and the total number of residues.

Mol	Chain	Analysed	Favoured	Allowed	Outliers	Percentiles
1	A	457/513 (89%)	429 (94%)	23 (5%)	5 (1%)	21 34

All (5) Ramachandran outliers are listed below:

Mol	Chain	Res	Type
1	A	295	LEU
1	A	497	LEU
1	A	294	ASN
1	A	123	HIS
1	A	238	SER

5.3.2 Protein sidechains ⓘ

In the following table, the Percentiles column shows the percent sidechain outliers of the chain as a percentile score with respect to all X-ray entries followed by that with respect to entries of similar resolution. The Analysed column shows the number of residues for which the sidechain conformation was analysed, and the total number of residues.

Mol	Chain	Analysed	Rotameric	Outliers	Percentiles	
1	A	411/459 (90%)	381 (93%)	30 (7%)	20	36

All (30) residues with a non-rotameric sidechain are listed below:

Mol	Chain	Res	Type
1	A	34	THR
1	A	42	LEU
1	A	53	GLU
1	A	54	GLU
1	A	77	ARG
1	A	97	ILE
1	A	104	ARG
1	A	146	LEU
1	A	159	LEU
1	A	176	GLN
1	A	181	ASP
1	A	182	LEU
1	A	195	ILE
1	A	196	ARG
1	A	224	LEU
1	A	229	LEU
1	A	233	ARG
1	A	267	THR
1	A	274	LEU
1	A	293	CYS
1	A	322	GLN
1	A	324	ASN
1	A	361	LEU

Continued on next page...

Continued from previous page...

Mol	Chain	Res	Type
1	A	377	LEU
1	A	394	VAL
1	A	401	LEU
1	A	413	LEU
1	A	417	ASN
1	A	493	LEU
1	A	497	LEU

Some sidechains can be flipped to improve hydrogen bonding and reduce clashes. All (15) such sidechains are listed below:

Mol	Chain	Res	Type
1	A	69	ASN
1	A	87	GLN
1	A	140	GLN
1	A	202	ASN
1	A	234	HIS
1	A	270	HIS
1	A	296	ASN
1	A	322	GLN
1	A	323	GLN
1	A	324	ASN
1	A	386	GLN
1	A	417	ASN
1	A	461	GLN
1	A	487	HIS
1	A	492	GLN

5.3.3 RNA ⓘ

There are no RNA chains in this entry.

5.4 Non-standard residues in protein, DNA, RNA chains ⓘ

There are no non-standard protein/DNA/RNA residues in this entry.

5.5 Carbohydrates ⓘ

There are no carbohydrates in this entry.

5.6 Ligand geometry ⓘ

Of 5 ligands modelled in this entry, 3 are monoatomic - leaving 2 for Mogul analysis.

In the following table, the Counts columns list the number of bonds (or angles) for which Mogul statistics could be retrieved, the number of bonds (or angles) that are observed in the model and the number of bonds (or angles) that are defined in the chemical component dictionary. The Link column lists molecule types, if any, to which the group is linked. The Z score for a bond length (or angle) is the number of standard deviations the observed value is removed from the expected value. A bond length (or angle) with $|Z| > 2$ is considered an outlier worth inspection. RMSZ is the root-mean-square of all Z scores of the bond lengths (or angles).

Mol	Type	Chain	Res	Link	Bond lengths			Bond angles		
					Counts	RMSZ	$\# Z > 2$	Counts	RMSZ	$\# Z > 2$
3	3AT	A	1000	2	32,32,32	1.21	6 (18%)	50,50,50	2.18	9 (18%)
4	3PO	A	4000	2	12,12,12	1.54	2 (16%)	20,20,20	1.16	2 (10%)

In the following table, the Chirals column lists the number of chiral outliers, the number of chiral centers analysed, the number of these observed in the model and the number defined in the chemical component dictionary. Similar counts are reported in the Torsion and Rings columns. '-' means no outliers of that kind were identified.

Mol	Type	Chain	Res	Link	Chirals	Torsions	Rings
3	3AT	A	1000	2	-	0/22/34/34	0/1/3/3
4	3PO	A	4000	2	-	0/12/12/12	0/0/0/0

All (8) bond length outliers are listed below:

Mol	Chain	Res	Type	Atoms	Z	Observed(Å)	Ideal(Å)
4	A	4000	3PO	PB-O3B	2.80	1.64	1.59
3	A	1000	3AT	PG-O2G	-2.41	1.45	1.54
3	A	1000	3AT	PB-O3B	2.36	1.64	1.59
3	A	1000	3AT	PA-O3A	2.36	1.64	1.59
4	A	4000	3PO	PB-O3A	-2.33	1.55	1.59
3	A	1000	3AT	PB-O2B	-2.24	1.45	1.55
3	A	1000	3AT	C4-N3	2.11	1.38	1.35
3	A	1000	3AT	C8-N7	-2.09	1.30	1.34

All (11) bond angle outliers are listed below:

Mol	Chain	Res	Type	Atoms	Z	Observed(°)	Ideal(°)
3	A	1000	3AT	O3A-PB-O3B	-8.64	84.09	101.66
3	A	1000	3AT	O4'-C1'-C2'	-5.47	101.94	107.12
3	A	1000	3AT	C3'-C2'-C1'	4.99	106.03	101.97

Continued on next page...

Continued from previous page...

Mol	Chain	Res	Type	Atoms	Z	Observed(°)	Ideal(°)
3	A	1000	3AT	O3A-PB-O1B	-4.50	78.97	111.28
3	A	1000	3AT	PA-O3A-PB	4.29	144.26	131.68
3	A	1000	3AT	O2B-PB-O3A	-3.67	87.72	105.14
3	A	1000	3AT	O2B-PB-O1B	3.28	130.51	112.21
4	A	4000	3PO	O2A-PA-O1A	2.67	119.17	110.44
3	A	1000	3AT	C8-N9-C4	-2.61	104.91	106.90
3	A	1000	3AT	C4-C5-N7	2.29	111.49	109.52
4	A	4000	3PO	PB-O3A-PA	2.09	137.81	131.68

There are no chirality outliers.

There are no torsion outliers.

There are no ring outliers.

5.7 Other polymers ⓘ

There are no such residues in this entry.

5.8 Polymer linkage issues

There are no chain breaks in this entry.

6 Fit of model and data ⓘ

6.1 Protein, DNA and RNA chains ⓘ

EDS was not executed - this section will therefore be empty.

6.2 Non-standard residues in protein, DNA, RNA chains ⓘ

EDS was not executed - this section will therefore be empty.

6.3 Carbohydrates ⓘ

EDS was not executed - this section will therefore be empty.

6.4 Ligands ⓘ

EDS was not executed - this section will therefore be empty.

6.5 Other polymers ⓘ

EDS was not executed - this section will therefore be empty.