



Full wwPDB X-ray Structure Validation Report

Feb 27, 2014 – 01:10 PM GMT

PDB ID : 1F5O
Title : 2.9 ANGSTROM CRYSTAL STRUCTURE OF DEOXYGENATED LAM-
PREY HEMOGLOBIN V IN THE SPACE GROUP P2(1)2(1)2(1)
Authors : Heaslet, H.A.; Royer Jr., W.E.
Deposited on : 2000-06-15
Resolution : 2.90 Å(reported)

This is a full wwPDB validation report for a publicly released PDB entry.
We welcome your comments at validation@mail.wwpdb.org
A user guide is available at <http://wwpdb.org/ValidationPDFNotes.html>

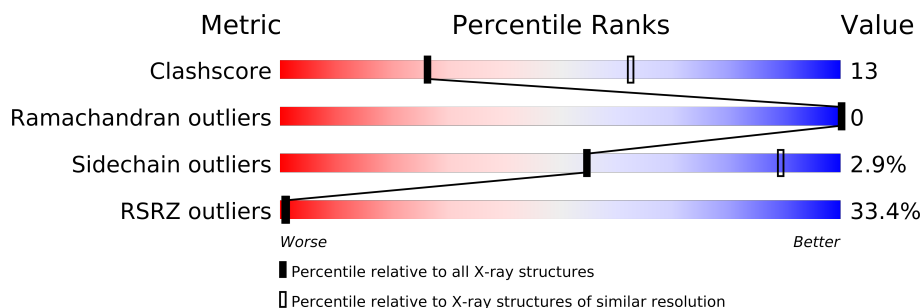
The following versions of software and data (see [references](#)) were used in the production of this report:

MolProbity : 4.02b-467
Mogul : 1.15 2013
Xtriage (Phenix) : dev-1323
EDS : stable22639
Percentile statistics : 21963
Refmac : 5.8.0049
CCP4 : 6.3.0 (Settle)
Ideal geometry (proteins) : Engh & Huber (2001)
Ideal geometry (DNA, RNA) : Parkinson et. al. (1996)
Validation Pipeline (wwPDB-VP) : stable22683

1 Overall quality at a glance

The reported resolution of this entry is 2.90 Å.

Percentile scores (ranging between 0-100) for global validation metrics of the entry are shown in the following graphic. The table shows the number of entries on which the scores are based.



Metric	Whole archive (#Entries)	Similar resolution (#Entries, resolution range(Å))
Clashscore	79885	1326 (2.90-2.90)
Ramachandran outliers	78287	1290 (2.90-2.90)
Sidechain outliers	78261	1292 (2.90-2.90)
RSRZ outliers	66119	1054 (2.90-2.90)

The table below summarises the geometric issues observed across the polymeric chains and their fit to the electron density. The red, orange, yellow and green segments on the lower bar indicate the fraction of residues that contain outliers for ≥ 3 , 2, 1 and 0 types of geometric quality criteria. The upper red bar (where present) indicates the fraction of residues that have poor fit to the electron density.

Mol	Chain	Length	Quality of chain
1	A	149	
1	B	149	
1	C	149	
1	D	149	
1	E	149	
1	F	149	

2 Entry composition

There are 3 unique types of molecules in this entry. The entry contains 7134 atoms, of which 0 are hydrogen and 0 are deuterium.

In the tables below, the ZeroOcc column contains the number of atoms modelled with zero occupancy, the AltConf column contains the number of residues with at least one atom in alternate conformation and the Trace column contains the number of residues modelled with at most 2 atoms.

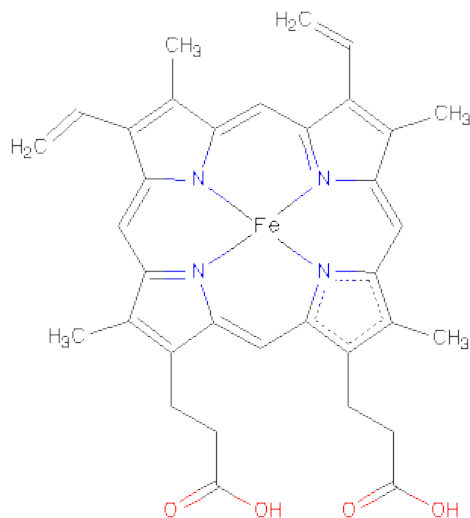
- Molecule 1 is a protein called HEMOGLOBIN V.

Mol	Chain	Residues	Atoms					ZeroOcc	AltConf	Trace
1	A	149	Total	C	N	O	S	0	0	0
			1144	732	189	217	6			
1	B	149	Total	C	N	O	S	0	0	0
			1144	732	189	217	6			
1	C	149	Total	C	N	O	S	0	0	0
			1144	732	189	217	6			
1	D	149	Total	C	N	O	S	0	0	0
			1144	732	189	217	6			
1	E	149	Total	C	N	O	S	0	0	0
			1144	732	189	217	6			
1	F	149	Total	C	N	O	S	0	0	0
			1144	732	189	217	6			

There are 12 discrepancies between the modelled and reference sequences:

Chain	Residue	Modelled	Actual	Comment	Reference
A	29	THR	ASN	SEE REMARK 999	UNP P02208
A	86	ALA	VAL	SEE REMARK 999	UNP P02208
B	29	THR	ASN	SEE REMARK 999	UNP P02208
B	86	ALA	VAL	SEE REMARK 999	UNP P02208
C	29	THR	ASN	SEE REMARK 999	UNP P02208
C	86	ALA	VAL	SEE REMARK 999	UNP P02208
D	29	THR	ASN	SEE REMARK 999	UNP P02208
D	86	ALA	VAL	SEE REMARK 999	UNP P02208
E	29	THR	ASN	SEE REMARK 999	UNP P02208
E	86	ALA	VAL	SEE REMARK 999	UNP P02208
F	29	THR	ASN	SEE REMARK 999	UNP P02208
F	86	ALA	VAL	SEE REMARK 999	UNP P02208

- Molecule 2 is PROTOPORPHYRIN IX CONTAINING FE (three-letter code: HEM) (formula: $C_{34}H_{32}FeN_4O_4$).



Mol	Chain	Residues	Atoms					ZeroOcc	AltConf
2	A	1	Total	C	Fe	N	O	0	0
			43	34	1	4	4		
2	B	1	Total	C	Fe	N	O	0	0
			43	34	1	4	4		
2	C	1	Total	C	Fe	N	O	0	0
			43	34	1	4	4		
2	D	1	Total	C	Fe	N	O	0	0
			43	34	1	4	4		
2	E	1	Total	C	Fe	N	O	0	0
			43	34	1	4	4		
2	F	1	Total	C	Fe	N	O	0	0
			43	34	1	4	4		

- Molecule 3 is water.

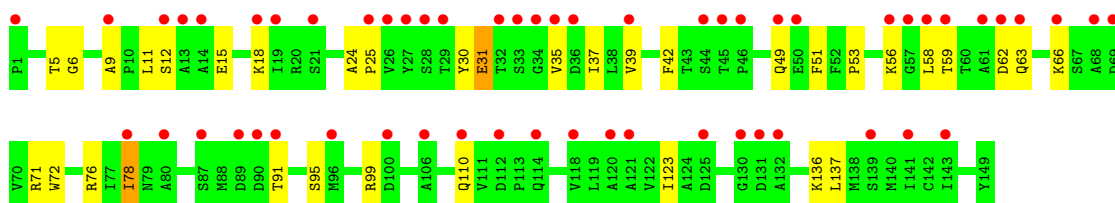
Mol	Chain	Residues	Atoms		ZeroOcc	AltConf
3	A	2	Total	O	0	0
			2	2		
3	B	2	Total	O	0	0
			2	2		
3	C	2	Total	O	0	0
			2	2		
3	D	2	Total	O	0	0
			2	2		
3	E	2	Total	O	0	0
			2	2		
3	F	2	Total	O	0	0
			2	2		

3 Residue-property plots

These plots are drawn for all protein, RNA and DNA chains in the entry. The first graphic for a chain summarises the proportions of errors displayed in the second graphic. The second graphic shows the sequence view annotated by issues in geometry and electron density. Residues are color-coded according to the number of geometric quality criteria for which they contain at least one outlier: green = 0, yellow = 1, orange = 2 and red = 3 or more. A red dot above a residue indicates a poor fit to the electron density ($RSRZ > 2$). Stretches of 2 or more consecutive residues without any outlier are shown as a green connector. Residues present in the sample, but not in the model, are shown in grey.

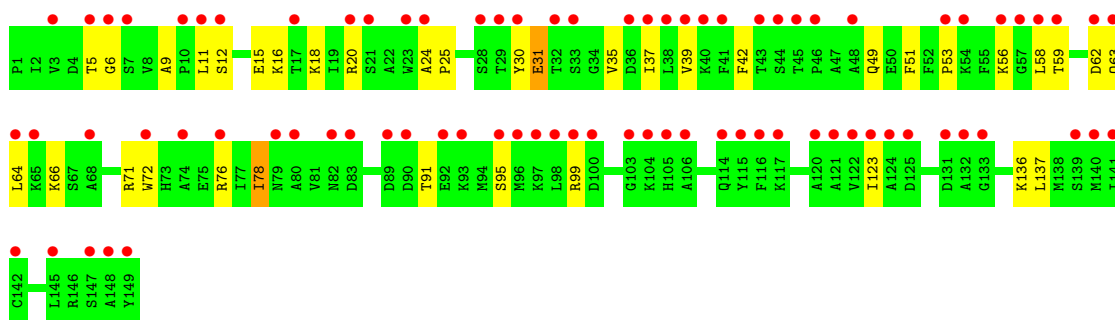
• Molecule 1: HEMOGLOBIN V

Chain A: 



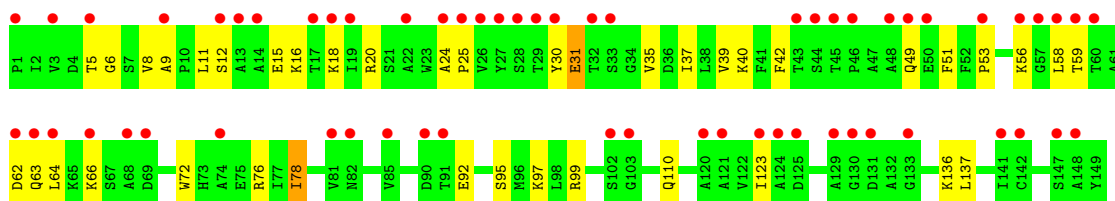
• Molecule 1: HEMOGLOBIN V

Chain B: 



• Molecule 1: HEMOGLOBIN V

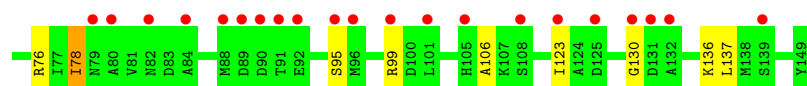
Chain C: 



• Molecule 1: HEMOGLOBIN V

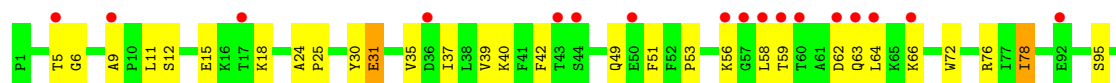
Chain D: 





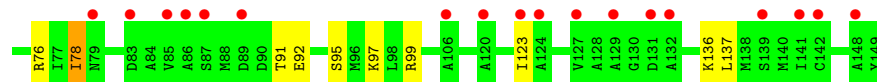
• Molecule 1: HEMOGLOBIN V

Chain E:



• Molecule 1: HEMOGLOBIN V

Chain F:



4 Data and refinement statistics

Property	Value	Source
Space group	P 21 21 21	Depositor
Cell constants a, b, c, α , β , γ	82.50Å 96.20Å 146.10Å 90.00° 90.00° 90.00°	Depositor
Resolution (Å)	8.00 – 2.90 9.99 – 2.90	Depositor EDS
% Data completeness (in resolution range)	95.5 (8.00-2.90) 95.1 (9.99-2.90)	Depositor EDS
R_{merge}	0.08	Depositor
R_{sym}	(Not available)	Depositor
$\langle I/\sigma(I) \rangle$ ¹	6.44 (at 2.89Å)	Xtriage
Refinement program	CNS 0.9	Depositor
R, R_{free}	0.192 , 0.234 0.350 , (Not available)	Depositor DCC
R_{free} test set	No test flags present.	DCC
Wilson B-factor (Å ²)	52.3	Xtriage
Anisotropy	0.846	Xtriage
Bulk solvent k_{sol} (e/Å ³), B_{sol} (Å ²)	0.33 , 52.0	EDS
Estimated twinning fraction	No twinning to report.	Xtriage
L-test for twinning	$\langle L \rangle = 0.51$, $\langle L^2 \rangle = 0.35$	Xtriage
Outliers	0 of 24451 reflections	Xtriage
F_o, F_c correlation	0.74	EDS
Total number of atoms	7134	wwPDB-VP
Average B, all atoms (Å ²)	57.0	wwPDB-VP

Xtriage's analysis on translational NCS is as follows: *The largest off-origin peak in the Patterson function is 2.89% of the height of the origin peak. No significant pseudotranslation is detected.*

¹Intensities estimated from amplitudes.

5 Model quality

5.1 Standard geometry

Bond lengths and bond angles in the following residue types are not validated in this section: HEM

The Z score for a bond length (or angle) is the number of standard deviations the observed value is removed from the expected value. A bond length (or angle) with $|Z| > 5$ is considered an outlier worth inspection. RMSZ is the root-mean-square of all Z scores of the bond lengths (or angles).

Mol	Chain	Bond lengths		Bond angles	
		RMSZ	$\# Z > 5$	RMSZ	$\# Z > 5$
1	A	0.43	0/1167	0.56	0/1577
1	B	0.40	0/1167	0.55	0/1577
1	C	0.45	0/1167	0.56	0/1577
1	D	0.42	0/1167	0.56	0/1577
1	E	0.44	0/1167	0.55	0/1577
1	F	0.41	0/1167	0.55	0/1577
All	All	0.42	0/7002	0.55	0/9462

There are no bond length outliers.

There are no bond angle outliers.

There are no chirality outliers.

There are no planarity outliers.

5.2 Close contacts

In the following table, the Non-H and H(model) columns list the number of non-hydrogen atoms and hydrogen atoms in the chain respectively. The H(added) column lists the number of hydrogens added by MolProbity. The Clashes column lists the number of clashes within the asymmetric unit, and the number in parentheses is this value normalized per 1000 atoms of the molecule in the chain. The Symm-Clashes column gives symmetry related clashes, in the same way as for the Clashes column.

Mol	Chain	Non-H	H(model)	H(added)	Clashes	Symm-Clashes
1	A	1144	0	1158	33	1
1	B	1144	0	1158	31	0
1	C	1144	0	1158	31	4
1	D	1144	0	1158	30	2
1	E	1144	0	1158	28	2
1	F	1144	0	1158	27	3

Continued on next page...

Continued from previous page...

Mol	Chain	Non-H	H(model)	H(added)	Clashes	Symm-Clashes
2	A	43	0	30	3	0
2	B	43	0	30	3	0
2	C	43	0	30	3	0
2	D	43	0	30	3	0
2	E	43	0	30	3	0
2	F	43	0	30	3	0
3	A	2	0	0	0	0
3	B	2	0	0	0	0
3	C	2	0	0	0	0
3	D	2	0	0	0	0
3	E	2	0	0	0	0
3	F	2	0	0	0	0
All	All	7134	0	7128	189	6

Clashscore is defined as the number of clashes calculated for the entry per 1000 atoms (including hydrogens) of the entry. The overall clashscore for this entry is 13.

All (189) close contacts within the same asymmetric unit are listed below.

Atom-1	Atom-2	Distance(Å)	Clash(Å)
1:E:24:ALA:HB3	1:E:25:PRO:HD3	1.58	0.85
1:A:31:GLU:OE1	1:B:71:ARG:HD2	1.78	0.82
1:F:24:ALA:HB3	1:F:25:PRO:HD3	1.62	0.80
1:B:72:TRP:CE2	1:B:76:ARG:HD2	2.16	0.80
1:C:24:ALA:HB3	1:C:25:PRO:HD3	1.62	0.80
1:D:24:ALA:HB3	1:D:25:PRO:HD3	1.62	0.80
1:A:24:ALA:HB3	1:A:25:PRO:HD3	1.62	0.80
1:A:72:TRP:CE2	1:A:76:ARG:HD2	2.17	0.79
1:D:18:LYS:HB3	1:D:18:LYS:NZ	1.97	0.79
1:E:18:LYS:NZ	1:E:18:LYS:HB3	1.99	0.78
1:A:31:GLU:OE1	1:B:71:ARG:NH1	2.17	0.77
1:F:18:LYS:NZ	1:F:18:LYS:HB3	1.99	0.77
1:C:18:LYS:NZ	1:C:18:LYS:HB3	2.01	0.76
1:A:18:LYS:HB3	1:A:18:LYS:NZ	2.01	0.75
1:C:11:LEU:HD23	1:C:136:LYS:HD2	1.69	0.75
1:E:72:TRP:CE2	1:E:76:ARG:HD2	2.21	0.75
1:F:72:TRP:CE2	1:F:76:ARG:HD2	2.20	0.75
1:F:11:LEU:HD23	1:F:136:LYS:HD2	1.68	0.75
1:D:72:TRP:CE2	1:D:76:ARG:HD2	2.22	0.75
1:C:72:TRP:CE2	1:C:76:ARG:HD2	2.22	0.74
1:B:24:ALA:HB3	1:B:25:PRO:HD3	1.67	0.74
1:B:11:LEU:HD23	1:B:136:LYS:HD2	1.70	0.74
1:B:18:LYS:NZ	1:B:18:LYS:HB3	2.03	0.73

Continued on next page...

Continued from previous page...

Atom-1	Atom-2	Distance(Å)	Clash(Å)
1:E:11:LEU:HD23	1:E:136:LYS:HD2	1.71	0.73
1:D:11:LEU:HD23	1:D:136:LYS:HD2	1.72	0.72
1:A:11:LEU:HD23	1:A:136:LYS:HD2	1.71	0.72
2:D:150:HEM:HMB1	2:D:150:HEM:HBB2	1.73	0.70
1:C:31:GLU:OE1	1:D:71:ARG:HD2	1.93	0.69
2:F:150:HEM:HBB2	2:F:150:HEM:HMB1	1.75	0.68
2:C:150:HEM:HMB1	2:C:150:HEM:HBB2	1.75	0.67
1:E:59:THR:H	1:E:63:GLN:NE2	1.92	0.67
1:C:59:THR:H	1:C:63:GLN:NE2	1.93	0.67
1:E:53:PRO:O	1:E:56:LYS:HG3	1.93	0.67
2:A:150:HEM:HMB1	2:A:150:HEM:HBB2	1.77	0.67
1:C:53:PRO:O	1:C:56:LYS:HG3	1.95	0.66
1:D:59:THR:H	1:D:63:GLN:NE2	1.91	0.66
1:B:59:THR:H	1:B:63:GLN:NE2	1.92	0.66
1:B:53:PRO:O	1:B:56:LYS:HG3	1.96	0.66
1:A:53:PRO:O	1:A:56:LYS:HG3	1.95	0.66
1:A:59:THR:H	1:A:63:GLN:NE2	1.93	0.65
2:B:150:HEM:HMB1	2:B:150:HEM:HBB2	1.78	0.65
1:F:53:PRO:O	1:F:56:LYS:HG3	1.98	0.64
1:F:59:THR:H	1:F:63:GLN:NE2	1.96	0.64
1:A:71:ARG:HD2	1:B:31:GLU:OE1	1.98	0.64
1:D:35:VAL:O	1:D:39:VAL:HG23	1.97	0.63
1:D:53:PRO:O	1:D:56:LYS:HG3	1.97	0.63
1:A:95:SER:O	1:A:99:ARG:HG3	1.98	0.63
1:F:18:LYS:HB3	1:F:18:LYS:HZ3	1.63	0.62
2:E:150:HEM:HMB1	2:E:150:HEM:HBB2	1.81	0.62
1:E:35:VAL:O	1:E:39:VAL:HG23	2.00	0.62
1:F:95:SER:O	1:F:99:ARG:HG3	1.99	0.62
1:F:35:VAL:O	1:F:39:VAL:HG23	2.00	0.62
1:C:95:SER:O	1:C:99:ARG:HG3	2.00	0.61
1:B:95:SER:O	1:B:99:ARG:HG3	2.00	0.60
1:B:35:VAL:O	1:B:39:VAL:HG23	2.00	0.60
1:C:35:VAL:O	1:C:39:VAL:HG23	2.01	0.60
1:E:18:LYS:HZ2	1:E:18:LYS:HB3	1.65	0.60
1:E:95:SER:O	1:E:99:ARG:HG3	2.01	0.60
1:C:18:LYS:HB3	1:C:18:LYS:HZ3	1.68	0.57
1:B:5:THR:HG22	1:B:6:GLY:N	2.19	0.57
1:D:18:LYS:HB3	1:D:18:LYS:HZ2	1.68	0.57
1:C:5:THR:HG22	1:C:6:GLY:N	2.20	0.57
1:A:35:VAL:O	1:A:39:VAL:HG23	2.04	0.56
1:A:5:THR:HG22	1:A:6:GLY:N	2.20	0.56
1:D:95:SER:O	1:D:99:ARG:HG3	2.06	0.55

Continued on next page...

Continued from previous page...

Atom-1	Atom-2	Distance(Å)	Clash(Å)
1:D:18:LYS:HB3	1:D:18:LYS:HZ3	1.69	0.55
1:D:5:THR:HG22	1:D:6:GLY:N	2.21	0.55
1:F:5:THR:HG22	1:F:6:GLY:N	2.22	0.55
1:A:18:LYS:HB3	1:A:18:LYS:HZ2	1.71	0.55
1:C:31:GLU:OE1	1:D:71:ARG:NH1	2.33	0.53
1:E:5:THR:HG22	1:E:6:GLY:N	2.23	0.53
1:B:18:LYS:HB3	1:B:18:LYS:HZ2	1.74	0.53
1:E:51:PHE:C	1:E:53:PRO:HD3	2.30	0.52
1:A:72:TRP:HA	1:B:30:TYR:OH	2.10	0.52
1:B:59:THR:H	1:B:63:GLN:HE21	1.57	0.52
1:B:51:PHE:C	1:B:53:PRO:HD3	2.31	0.51
1:C:51:PHE:C	1:C:53:PRO:HD3	2.30	0.51
1:D:30:TYR:HB2	1:D:78:ILE:HG21	1.92	0.51
1:F:51:PHE:C	1:F:53:PRO:HD3	2.31	0.51
1:E:18:LYS:HZ3	1:E:18:LYS:HB3	1.76	0.51
1:A:71:ARG:NH1	1:B:31:GLU:OE1	2.43	0.51
1:F:30:TYR:HB2	1:F:78:ILE:HG21	1.93	0.50
1:D:51:PHE:C	1:D:53:PRO:HD3	2.31	0.50
1:D:62:ASP:OD2	1:D:66:LYS:HE3	2.11	0.50
1:A:30:TYR:HB2	1:A:78:ILE:HG21	1.93	0.50
1:E:30:TYR:HB2	1:E:78:ILE:HG21	1.93	0.50
1:A:51:PHE:C	1:A:53:PRO:HD3	2.32	0.50
1:B:37:ILE:HG21	1:B:123:ILE:HG12	1.93	0.49
1:C:30:TYR:HB2	1:C:78:ILE:HG21	1.94	0.49
1:B:30:TYR:HB2	1:B:78:ILE:HG21	1.94	0.49
2:D:150:HEM:CMB	2:D:150:HEM:HBB2	2.42	0.49
1:B:18:LYS:HZ3	1:B:18:LYS:HB3	1.76	0.48
1:C:59:THR:H	1:C:63:GLN:HE21	1.60	0.48
1:E:37:ILE:HG21	1:E:123:ILE:HG12	1.94	0.48
1:D:42:PHE:CE2	1:D:49:GLN:HG2	2.48	0.48
1:D:58:LEU:N	1:D:58:LEU:HD22	2.28	0.48
1:F:62:ASP:OD2	1:F:66:LYS:HE3	2.13	0.48
1:F:42:PHE:CE2	1:F:49:GLN:HG2	2.48	0.48
2:D:150:HEM:HBC2	2:D:150:HEM:HMC2	1.95	0.48
1:C:42:PHE:CE2	1:C:49:GLN:HG2	2.48	0.48
1:A:72:TRP:CA	1:B:30:TYR:OH	2.61	0.48
1:A:18:LYS:HB3	1:A:18:LYS:HZ3	1.74	0.48
1:E:62:ASP:OD2	1:E:66:LYS:HE3	2.14	0.47
1:E:42:PHE:CE2	1:E:49:GLN:HG2	2.49	0.47
1:B:42:PHE:CE2	1:B:49:GLN:HG2	2.49	0.47
2:F:150:HEM:HMC2	2:F:150:HEM:HBC2	1.96	0.47
1:F:37:ILE:HG21	1:F:123:ILE:HG12	1.95	0.47

Continued on next page...

Continued from previous page...

Atom-1	Atom-2	Distance(Å)	Clash(Å)
2:C:150:HEM:HBB2	2:C:150:HEM:CMB	2.44	0.47
1:E:59:THR:H	1:E:63:GLN:HE21	1.59	0.47
1:B:5:THR:HG22	1:B:6:GLY:H	1.80	0.47
1:A:42:PHE:CE2	1:A:49:GLN:HG2	2.50	0.47
2:B:150:HEM:CMB	2:B:150:HEM:HBB2	2.45	0.47
1:B:58:LEU:N	1:B:58:LEU:HD22	2.30	0.47
1:C:62:ASP:OD2	1:C:66:LYS:HE3	2.15	0.46
1:C:53:PRO:HB3	1:C:56:LYS:HZ1	1.80	0.46
1:B:62:ASP:OD2	1:B:66:LYS:HE3	2.14	0.46
1:C:37:ILE:HG21	1:C:123:ILE:HG12	1.96	0.46
1:D:59:THR:H	1:D:63:GLN:HE21	1.60	0.46
1:F:59:THR:H	1:F:63:GLN:HE21	1.63	0.46
1:A:59:THR:H	1:A:63:GLN:HE21	1.60	0.46
1:A:5:THR:HG22	1:A:6:GLY:H	1.80	0.46
1:A:58:LEU:N	1:A:58:LEU:HD22	2.31	0.46
1:D:37:ILE:HG21	1:D:123:ILE:HG12	1.98	0.46
1:E:58:LEU:N	1:E:58:LEU:HD22	2.31	0.46
1:A:37:ILE:HG21	1:A:123:ILE:HG12	1.98	0.46
1:B:9:ALA:O	1:B:136:LYS:HD3	2.16	0.46
1:C:58:LEU:HD22	1:C:58:LEU:N	2.31	0.46
1:A:53:PRO:HB3	1:A:56:LYS:HZ1	1.80	0.45
1:C:5:THR:HG22	1:C:6:GLY:H	1.80	0.45
1:F:18:LYS:HZ2	1:F:18:LYS:HB3	1.79	0.45
2:A:150:HEM:CMB	2:A:150:HEM:HBB2	2.45	0.45
1:F:5:THR:HG22	1:F:6:GLY:H	1.82	0.45
1:F:72:TRP:O	1:F:76:ARG:HD3	2.16	0.45
1:E:5:THR:HG22	1:E:6:GLY:H	1.82	0.45
1:D:5:THR:HG22	1:D:6:GLY:H	1.81	0.45
1:A:9:ALA:O	1:A:136:LYS:HD3	2.18	0.44
1:E:31:GLU:H	1:E:31:GLU:HG2	1.26	0.44
1:C:18:LYS:HZ2	1:C:18:LYS:HB3	1.76	0.44
1:A:31:GLU:O	1:A:35:VAL:HG23	2.16	0.44
1:D:40:LYS:HE3	1:D:40:LYS:HB2	1.84	0.44
1:B:72:TRP:O	1:B:76:ARG:HD3	2.17	0.44
1:C:24:ALA:CB	1:C:25:PRO:HD3	2.43	0.44
1:D:9:ALA:O	1:D:136:LYS:HD3	2.18	0.43
1:A:72:TRP:O	1:A:76:ARG:HD3	2.17	0.43
1:A:62:ASP:OD2	1:A:66:LYS:HE3	2.18	0.43
1:F:51:PHE:O	1:F:53:PRO:HD3	2.18	0.43
2:F:150:HEM:HBB2	2:F:150:HEM:CMB	2.44	0.43
1:E:51:PHE:O	1:E:53:PRO:HD3	2.18	0.43
2:A:150:HEM:HBC2	2:A:150:HEM:HMC2	2.00	0.43

Continued on next page...

Continued from previous page...

Atom-1	Atom-2	Distance(Å)	Clash(Å)
1:F:12:SER:OG	1:F:15:GLU:HG3	2.19	0.43
1:B:12:SER:OG	1:B:15:GLU:HG3	2.19	0.43
1:E:40:LYS:HB2	1:E:40:LYS:HE3	1.83	0.43
1:F:16:LYS:O	1:F:20:ARG:HG3	2.19	0.43
1:D:58:LEU:HB3	1:D:64:LEU:HD23	2.00	0.42
1:A:31:GLU:H	1:A:31:GLU:HG2	1.28	0.42
1:C:58:LEU:HB3	1:C:64:LEU:CD2	2.49	0.42
1:C:40:LYS:HB2	1:C:40:LYS:HE3	1.84	0.42
1:C:58:LEU:HB3	1:C:64:LEU:HD23	2.00	0.42
1:B:16:LYS:O	1:B:20:ARG:HG3	2.19	0.42
1:C:51:PHE:O	1:C:53:PRO:HD3	2.20	0.42
1:A:12:SER:OG	1:A:15:GLU:HG3	2.18	0.42
1:D:53:PRO:HB3	1:D:56:LYS:HZ1	1.83	0.42
1:A:72:TRP:CZ2	1:A:76:ARG:HD2	2.55	0.41
2:C:150:HEM:HBC2	2:C:150:HEM:HMC2	2.02	0.41
1:C:12:SER:OG	1:C:15:GLU:HG3	2.20	0.41
1:F:31:GLU:H	1:F:31:GLU:HG2	1.27	0.41
1:B:51:PHE:O	1:B:53:PRO:HD3	2.20	0.41
1:E:12:SER:OG	1:E:15:GLU:HG3	2.20	0.41
1:D:67:SER:HB3	1:D:70:VAL:HG23	2.02	0.41
1:F:58:LEU:HB3	1:F:64:LEU:HD23	2.02	0.41
1:C:9:ALA:O	1:C:136:LYS:HD3	2.21	0.41
2:E:150:HEM:CMB	2:E:150:HEM:HBB2	2.48	0.41
1:C:72:TRP:O	1:C:76:ARG:HD3	2.20	0.41
1:D:58:LEU:N	1:D:58:LEU:CD2	2.83	0.41
1:E:58:LEU:HB3	1:E:64:LEU:HD23	2.03	0.41
1:E:72:TRP:O	1:E:76:ARG:HD3	2.20	0.41
1:F:53:PRO:HB3	1:F:56:LYS:HZ1	1.85	0.41
1:E:31:GLU:OE1	1:F:71:ARG:HD2	2.21	0.41
1:A:51:PHE:O	1:A:53:PRO:HD3	2.20	0.41
1:E:9:ALA:O	1:E:136:LYS:HD3	2.21	0.41
2:B:150:HEM:HMC2	2:B:150:HEM:HBC2	2.02	0.41
1:F:58:LEU:HD22	1:F:58:LEU:N	2.36	0.41
2:E:150:HEM:HBC2	2:E:150:HEM:HMC2	2.03	0.40
1:D:58:LEU:HB3	1:D:64:LEU:CD2	2.51	0.40
1:D:31:GLU:H	1:D:31:GLU:HG2	1.28	0.40
1:E:24:ALA:HB3	1:E:25:PRO:CD	2.42	0.40
1:B:58:LEU:HB3	1:B:64:LEU:HD23	2.03	0.40
1:D:72:TRP:O	1:D:76:ARG:HD3	2.21	0.40
1:C:16:LYS:O	1:C:20:ARG:HG3	2.22	0.40

All (6) symmetry-related close contacts are listed below. The label for Atom-2 includes the symmetry operator and encoded unit-cell translations to be applied.

Atom-1	Atom-2	Distance(Å)	Clash(Å)
1:C:92:GLU:OE1	1:F:97:LYS:CE[4.556]	1.98	0.22
1:D:130:GLY:O	1:E:132:ALA:N[3.655]	2.00	0.20
1:C:8:VAL:O	1:E:110:GLN:NE2[4.556]	2.03	0.17
1:C:97:LYS:CE	1:F:92:GLU:OE1[4.556]	2.04	0.16
1:A:110:GLN:NE2	1:C:110:GLN:NE2[1.455]	2.18	0.02
1:D:106:ALA:O	1:F:7:SER:OG[4.556]	2.19	0.01

5.3 Torsion angles

5.3.1 Protein backbone ⓘ

In the following table, the Percentiles column shows the percent Ramachandran outliers of the chain as a percentile score with respect to all X-ray entries followed by that with respect to entries of similar resolution. The Analysed column shows the number of residues for which the backbone conformation was analysed, and the total number of residues.

Mol	Chain	Analysed	Favoured	Allowed	Outliers	Percentiles	
1	A	147/149 (99%)	142 (97%)	5 (3%)	0	100	100
1	B	147/149 (99%)	141 (96%)	6 (4%)	0	100	100
1	C	147/149 (99%)	142 (97%)	5 (3%)	0	100	100
1	D	147/149 (99%)	142 (97%)	5 (3%)	0	100	100
1	E	147/149 (99%)	142 (97%)	5 (3%)	0	100	100
1	F	147/149 (99%)	143 (97%)	4 (3%)	0	100	100
All	All	882/894 (99%)	852 (97%)	30 (3%)	0	100	100

There are no Ramachandran outliers to report.

5.3.2 Protein sidechains ⓘ

In the following table, the Percentiles column shows the percent sidechain outliers of the chain as a percentile score with respect to all X-ray entries followed by that with respect to entries of similar resolution. The Analysed column shows the number of residues for which the sidechain conformation was analysed, and the total number of residues.

Mol	Chain	Analysed	Rotameric	Outliers	Percentiles	
1	A	122/122 (100%)	118 (97%)	4 (3%)	50	87
1	B	122/122 (100%)	118 (97%)	4 (3%)	50	87
1	C	122/122 (100%)	119 (98%)	3 (2%)	60	91

Continued on next page...

Continued from previous page...

Mol	Chain	Analysed	Rotameric	Outliers	Percentiles	
1	D	122/122 (100%)	119 (98%)	3 (2%)	60	91
1	E	122/122 (100%)	119 (98%)	3 (2%)	60	91
1	F	122/122 (100%)	118 (97%)	4 (3%)	50	87
All	All	732/732 (100%)	711 (97%)	21 (3%)	55	89

All (21) residues with a non-rotameric sidechain are listed below:

Mol	Chain	Res	Type
1	A	31	GLU
1	A	78	ILE
1	A	91	THR
1	A	137	LEU
1	B	31	GLU
1	B	78	ILE
1	B	91	THR
1	B	137	LEU
1	C	31	GLU
1	C	78	ILE
1	C	137	LEU
1	D	31	GLU
1	D	78	ILE
1	D	137	LEU
1	E	31	GLU
1	E	78	ILE
1	E	137	LEU
1	F	31	GLU
1	F	78	ILE
1	F	91	THR
1	F	137	LEU

Some sidechains can be flipped to improve hydrogen bonding and reduce clashes. All (12) such sidechains are listed below:

Mol	Chain	Res	Type
1	A	49	GLN
1	A	63	GLN
1	B	49	GLN
1	B	63	GLN
1	C	49	GLN
1	C	63	GLN
1	D	49	GLN

Continued on next page...

Continued from previous page...

Mol	Chain	Res	Type
1	D	63	GLN
1	E	49	GLN
1	E	63	GLN
1	F	49	GLN
1	F	63	GLN

5.3.3 RNA ⓘ

There are no RNA chains in this entry.

5.4 Non-standard residues in protein, DNA, RNA chains ⓘ

There are no non-standard protein/DNA/RNA residues in this entry.

5.5 Carbohydrates ⓘ

There are no carbohydrates in this entry.

5.6 Ligand geometry ⓘ

6 ligands are modelled in this entry.

In the following table, the Counts columns list the number of bonds (or angles) for which Mogul statistics could be retrieved, the number of bonds (or angles) that are observed in the model and the number of bonds (or angles) that are defined in the chemical component dictionary. The Link column lists molecule types, if any, to which the group is linked. The Z score for a bond length (or angle) is the number of standard deviations the observed value is removed from the expected value. A bond length (or angle) with $|Z| > 2$ is considered an outlier worth inspection. RMSZ is the root-mean-square of all Z scores of the bond lengths (or angles).

Mol	Type	Chain	Res	Link	Bond lengths			Bond angles		
					Counts	RMSZ	$\# Z > 2$	Counts	RMSZ	$\# Z > 2$
2	HEM	A	150	1	49,50,50	2.71	13 (26%)	46,82,82	1.54	11 (23%)
2	HEM	B	150	1	49,50,50	2.48	11 (22%)	46,82,82	1.59	12 (26%)
2	HEM	C	150	1	49,50,50	2.14	10 (20%)	46,82,82	1.47	11 (23%)
2	HEM	D	150	1	49,50,50	2.20	14 (28%)	46,82,82	1.47	9 (19%)
2	HEM	E	150	1	49,50,50	2.58	14 (28%)	46,82,82	1.43	10 (21%)
2	HEM	F	150	1	49,50,50	2.32	14 (28%)	46,82,82	1.58	10 (21%)

In the following table, the Chirals column lists the number of chiral outliers, the number of chiral centers analysed, the number of these observed in the model and the number defined in the chemical component dictionary. Similar counts are reported in the Torsion and Rings columns. '-' means no outliers of that kind were identified.

Mol	Type	Chain	Res	Link	Chirals	Torsions	Rings
2	HEM	A	150	1	-	0/14/114/114	0/0/8/8
2	HEM	B	150	1	-	0/14/114/114	0/0/8/8
2	HEM	C	150	1	-	0/14/114/114	0/0/8/8
2	HEM	D	150	1	-	0/14/114/114	0/0/8/8
2	HEM	E	150	1	-	0/14/114/114	0/0/8/8
2	HEM	F	150	1	-	0/14/114/114	0/0/8/8

All (76) bond length outliers are listed below:

Mol	Chain	Res	Type	Atoms	Z	Observed(Å)	Ideal(Å)
2	B	150	HEM	C3D-C4D	12.25	1.47	1.44
2	A	150	HEM	C2B-C1B	11.38	1.47	1.44
2	C	150	HEM	C3D-C4D	8.83	1.46	1.44
2	E	150	HEM	C2D-C1D	-7.84	1.42	1.44
2	E	150	HEM	C3D-C4D	7.22	1.46	1.44
2	D	150	HEM	C3D-C4D	6.95	1.46	1.44
2	F	150	HEM	C3D-C4D	6.87	1.46	1.44
2	E	150	HEM	C2B-C1B	6.83	1.46	1.44
2	A	150	HEM	C3D-C4D	6.82	1.46	1.44
2	F	150	HEM	C2D-C1D	-6.78	1.42	1.44
2	C	150	HEM	C3D-C2D	-6.17	1.33	1.43
2	D	150	HEM	C3D-C2D	-5.80	1.33	1.43
2	E	150	HEM	C3C-C2C	-5.71	1.33	1.43
2	A	150	HEM	C3D-C2D	-5.49	1.34	1.43
2	A	150	HEM	C2D-C1D	-5.26	1.43	1.44
2	F	150	HEM	C3D-C2D	-5.15	1.34	1.43
2	E	150	HEM	C3D-C2D	-5.13	1.34	1.43
2	D	150	HEM	C3C-C2C	-5.05	1.34	1.43
2	F	150	HEM	C3C-C2C	-4.99	1.35	1.43
2	B	150	HEM	C3D-C2D	-4.77	1.35	1.43
2	E	150	HEM	C4A-C3A	4.68	1.46	1.40
2	D	150	HEM	C2D-C1D	4.56	1.45	1.44
2	B	150	HEM	C2B-C1B	4.44	1.45	1.44
2	B	150	HEM	C3C-C2C	-4.32	1.36	1.43
2	C	150	HEM	C3C-C2C	-4.24	1.36	1.43
2	D	150	HEM	C3B-C2B	-4.04	1.36	1.43
2	A	150	HEM	C3B-C2B	-3.98	1.36	1.43
2	F	150	HEM	C3B-C2B	-3.96	1.36	1.43
2	A	150	HEM	CHA-C4D	3.83	1.41	1.35

Continued on next page...

Continued from previous page...

Mol	Chain	Res	Type	Atoms	Z	Observed(Å)	Ideal(Å)
2	A	150	HEM	C3C-C2C	-3.81	1.37	1.43
2	A	150	HEM	C4A-C3A	3.68	1.44	1.40
2	F	150	HEM	C2B-C1B	3.58	1.45	1.44
2	B	150	HEM	C3B-C2B	-3.45	1.37	1.43
2	F	150	HEM	CHA-C4D	3.42	1.40	1.35
2	D	150	HEM	C2B-C1B	3.27	1.45	1.44
2	D	150	HEM	CHA-C4D	3.25	1.40	1.35
2	F	150	HEM	C4A-C3A	3.19	1.44	1.40
2	E	150	HEM	C3B-C2B	-3.05	1.38	1.43
2	C	150	HEM	C2B-C1B	3.03	1.45	1.44
2	A	150	HEM	C3B-C4B	3.01	1.48	1.44
2	E	150	HEM	CHA-C4D	2.98	1.40	1.35
2	C	150	HEM	C3B-C2B	-2.98	1.38	1.43
2	B	150	HEM	C4A-C3A	2.94	1.43	1.40
2	B	150	HEM	CBC-CAC	2.82	1.45	1.28
2	A	150	HEM	CHB-C1B	2.82	1.39	1.35
2	C	150	HEM	C4A-C3A	2.81	1.43	1.40
2	D	150	HEM	C4A-C3A	2.79	1.43	1.40
2	C	150	HEM	CBC-CAC	2.79	1.45	1.28
2	E	150	HEM	CBC-CAC	2.78	1.45	1.28
2	C	150	HEM	CBB-CAB	2.77	1.44	1.28
2	D	150	HEM	CBC-CAC	2.75	1.44	1.28
2	B	150	HEM	C4A-NA	2.70	1.41	1.36
2	F	150	HEM	CBB-CAB	2.67	1.44	1.28
2	F	150	HEM	C3B-C4B	2.65	1.47	1.44
2	A	150	HEM	CBC-CAC	2.63	1.44	1.28
2	E	150	HEM	C4A-NA	2.62	1.41	1.36
2	C	150	HEM	C4A-NA	2.62	1.41	1.36
2	D	150	HEM	CBB-CAB	2.61	1.44	1.28
2	F	150	HEM	CBC-CAC	2.54	1.43	1.28
2	E	150	HEM	CBB-CAB	2.44	1.43	1.28
2	B	150	HEM	CBB-CAB	2.44	1.43	1.28
2	E	150	HEM	C3B-C4B	2.44	1.47	1.44
2	D	150	HEM	CHB-C1B	2.41	1.39	1.35
2	A	150	HEM	CBB-CAB	2.40	1.42	1.28
2	F	150	HEM	CHB-C1B	2.36	1.39	1.35
2	C	150	HEM	CHA-C4D	2.34	1.39	1.35
2	F	150	HEM	C4A-NA	2.22	1.40	1.36
2	E	150	HEM	CHC-C1C	2.18	1.40	1.36
2	E	150	HEM	CHD-C4C	2.12	1.40	1.36
2	D	150	HEM	FE-NB	2.11	2.05	1.97
2	A	150	HEM	CHD-C4C	2.11	1.40	1.36

Continued on next page...

Continued from previous page...

Mol	Chain	Res	Type	Atoms	Z	Observed(Å)	Ideal(Å)
2	D	150	HEM	CMB-C2B	2.09	1.53	1.47
2	D	150	HEM	C4A-NA	2.06	1.40	1.36
2	B	150	HEM	CHB-C1B	2.02	1.38	1.35
2	F	150	HEM	C1A-C2A	2.01	1.46	1.43
2	B	150	HEM	C3B-C4B	2.00	1.46	1.44

All (63) bond angle outliers are listed below:

Mol	Chain	Res	Type	Atoms	Z	Observed(°)	Ideal(°)
2	A	150	HEM	C3A-C4A-NA	4.46	112.78	109.41
2	F	150	HEM	C3B-C4B-NB	-4.41	110.84	114.00
2	B	150	HEM	C3A-C4A-NA	4.12	112.53	109.41
2	F	150	HEM	C3A-C4A-NA	3.87	112.33	109.41
2	B	150	HEM	C4A-C3A-C2A	-3.68	104.43	107.00
2	C	150	HEM	C3B-C4B-NB	-3.51	111.49	114.00
2	D	150	HEM	C3B-C4B-NB	-3.50	111.49	114.00
2	D	150	HEM	C3A-C4A-NA	3.35	111.94	109.41
2	F	150	HEM	CBA-CAA-C2A	-3.34	106.82	112.69
2	C	150	HEM	C3A-C4A-NA	3.26	111.87	109.41
2	A	150	HEM	CBA-CAA-C2A	-3.19	107.08	112.69
2	A	150	HEM	C3B-C4B-NB	-3.18	111.72	114.00
2	F	150	HEM	C4A-C3A-C2A	-3.14	104.81	107.00
2	E	150	HEM	C3A-C4A-NA	3.04	111.71	109.41
2	C	150	HEM	C4A-C3A-C2A	-2.93	104.96	107.00
2	D	150	HEM	CBA-CAA-C2A	-2.89	107.61	112.69
2	C	150	HEM	CBA-CAA-C2A	-2.88	107.62	112.69
2	A	150	HEM	C4A-C3A-C2A	-2.82	105.03	107.00
2	E	150	HEM	C3B-C4B-NB	-2.79	112.00	114.00
2	B	150	HEM	C3B-C4B-NB	-2.78	112.01	114.00
2	E	150	HEM	C4A-C3A-C2A	-2.73	105.09	107.00
2	B	150	HEM	C4A-CHB-C1B	-2.70	123.92	127.47
2	E	150	HEM	CBA-CAA-C2A	-2.70	107.94	112.69
2	B	150	HEM	C3A-C4A-CHB	-2.64	120.99	126.00
2	B	150	HEM	C1A-CHA-C4D	-2.58	124.08	127.47
2	D	150	HEM	CAD-C3D-C4D	2.51	129.04	124.53
2	F	150	HEM	C1A-C2A-C3A	2.50	109.51	106.92
2	C	150	HEM	CAD-C3D-C4D	2.49	129.00	124.53
2	A	150	HEM	C3A-C4A-CHB	-2.48	121.29	126.00
2	B	150	HEM	C4C-NC-C1C	-2.47	102.97	105.53
2	D	150	HEM	CBD-CAD-C3D	-2.46	109.00	114.37
2	A	150	HEM	CAD-C3D-C4D	2.45	128.93	124.53
2	F	150	HEM	C1A-CHA-C4D	-2.44	124.26	127.47

Continued on next page...

Continued from previous page...

Mol	Chain	Res	Type	Atoms	Z	Observed(°)	Ideal(°)
2	B	150	HEM	CBD-CAD-C3D	-2.39	109.15	114.37
2	E	150	HEM	C4A-CHB-C1B	-2.36	124.37	127.47
2	B	150	HEM	CBA-CAA-C2A	-2.35	108.55	112.69
2	C	150	HEM	C1A-C2A-C3A	2.35	109.35	106.92
2	E	150	HEM	C1A-CHA-C4D	-2.31	124.43	127.47
2	E	150	HEM	CAD-C3D-C4D	2.31	128.69	124.53
2	F	150	HEM	C4C-NC-C1C	-2.25	103.20	105.53
2	B	150	HEM	C1A-C2A-C3A	2.24	109.24	106.92
2	D	150	HEM	C4A-C3A-C2A	-2.24	105.44	107.00
2	D	150	HEM	C4A-CHB-C1B	-2.21	124.56	127.47
2	C	150	HEM	C4A-CHB-C1B	-2.21	124.57	127.47
2	E	150	HEM	C1A-C2A-C3A	2.20	109.20	106.92
2	B	150	HEM	C1B-NB-C4B	-2.19	102.92	105.16
2	A	150	HEM	C1B-NB-C4B	-2.19	102.92	105.16
2	A	150	HEM	C4A-NA-C1A	-2.17	103.91	106.76
2	C	150	HEM	CAA-C2A-C3A	-2.14	122.90	129.00
2	E	150	HEM	C4C-NC-C1C	-2.13	103.32	105.53
2	A	150	HEM	C4A-CHB-C1B	-2.12	124.68	127.47
2	A	150	HEM	CBD-CAD-C3D	-2.11	109.76	114.37
2	F	150	HEM	C3A-C4A-CHB	-2.10	122.01	126.00
2	D	150	HEM	C1A-CHA-C4D	-2.06	124.76	127.47
2	F	150	HEM	C4A-CHB-C1B	-2.05	124.77	127.47
2	C	150	HEM	CBD-CAD-C3D	-2.04	109.92	114.37
2	A	150	HEM	C1A-CHA-C4D	-2.04	124.79	127.47
2	E	150	HEM	CBD-CAD-C3D	-2.04	109.92	114.37
2	C	150	HEM	C3A-C4A-CHB	-2.04	122.14	126.00
2	B	150	HEM	CAD-C3D-C4D	2.03	128.19	124.53
2	D	150	HEM	C1B-NB-C4B	-2.02	103.09	105.16
2	C	150	HEM	C1A-CHA-C4D	-2.02	124.82	127.47
2	F	150	HEM	CAA-C2A-C3A	-2.01	123.26	129.00

There are no chirality outliers.

There are no torsion outliers.

There are no ring outliers.

5.7 Other polymers ⓘ

There are no such residues in this entry.

5.8 Polymer linkage issues

There are no chain breaks in this entry.

6 Fit of model and data ⓘ

6.1 Protein, DNA and RNA chains ⓘ

In the following table, the column labelled ‘#RSRZ> 2’ contains the number (and percentage) of RSRZ outliers, followed by percent RSRZ outliers for the chain as percentile scores relative to all X-ray entries and entries of similar resolution. The OWAB column contains the minimum, median, 95th percentile and maximum values of the occupancy-weighted average B-factor per residue. The column labelled ‘Q< 0.9’ lists the number of (and percentage) of residues with an average occupancy less than 0.9.

Mol	Chain	Analysed	<RSRZ>	#RSRZ>2	OWAB(Å ²)	Q<0.9
1	A	149/149 (100%)	1.88	56 (37%) 1 0	32, 56, 91, 108	0
1	B	149/149 (100%)	2.34	81 (54%) 0 0	32, 57, 91, 103	0
1	C	149/149 (100%)	2.01	60 (40%) 1 0	39, 61, 90, 119	0
1	D	149/149 (100%)	1.58	45 (30%) 1 1	33, 58, 92, 113	0
1	E	149/149 (100%)	0.92	19 (12%) 4 6	24, 47, 84, 116	0
1	F	149/149 (100%)	1.41	40 (26%) 1 1	38, 55, 81, 125	0
All	All	894/894 (100%)	1.69	301 (33%) 1 1	24, 56, 91, 125	0

All (301) RSRZ outliers are listed below:

Mol	Chain	Res	Type	RSRZ
1	C	59	THR	8.0
1	B	36	ASP	7.7
1	C	24	ALA	6.3
1	D	17	THR	6.0
1	B	6	GLY	6.0
1	E	60	THR	5.7
1	B	62	ASP	5.7
1	A	132	ALA	5.6
1	B	142	CYS	5.6
1	B	7	SER	5.4
1	B	63	GLN	5.3
1	D	91	THR	5.1
1	F	56	LYS	5.1
1	F	32	THR	5.1
1	B	12	SER	5.0
1	B	10	PRO	5.0
1	A	12	SER	5.0
1	B	32	THR	4.9
1	A	50	GLU	4.9

Continued on next page...

Continued from previous page...

Mol	Chain	Res	Type	RSRZ
1	D	59	THR	4.9
1	C	17	THR	4.7
1	A	1	PRO	4.7
1	C	142	CYS	4.7
1	B	68	ALA	4.6
1	E	139	SER	4.5
1	B	99	ARG	4.5
1	B	90	ASP	4.5
1	C	125	ASP	4.5
1	D	108	SER	4.5
1	F	86	ALA	4.5
1	C	12	SER	4.4
1	D	125	ASP	4.4
1	B	11	LEU	4.4
1	F	57	GLY	4.4
1	A	121	ALA	4.3
1	D	96	MET	4.3
1	B	92	GLU	4.3
1	A	36	ASP	4.2
1	A	59	THR	4.2
1	C	1	PRO	4.2
1	B	93	LYS	4.2
1	D	131	ASP	4.2
1	D	62	ASP	4.2
1	A	32	THR	4.1
1	D	24	ALA	4.1
1	C	57	GLY	4.1
1	A	58	LEU	4.1
1	C	58	LEU	4.1
1	B	56	LYS	4.0
1	B	59	THR	4.0
1	D	67	SER	4.0
1	A	34	GLY	4.0
1	A	33	SER	4.0
1	C	13	ALA	3.9
1	A	56	LYS	3.8
1	B	17	THR	3.8
1	A	44	SER	3.8
1	A	49	GLN	3.8
1	C	82	ASN	3.8
1	E	59	THR	3.8
1	B	46	PRO	3.7

Continued on next page...

Continued from previous page...

Mol	Chain	Res	Type	RSRZ
1	B	131	ASP	3.7
1	C	69	ASP	3.7
1	B	100	ASP	3.7
1	B	148	ALA	3.7
1	C	18	LYS	3.7
1	A	13	ALA	3.6
1	C	43	THR	3.6
1	A	18	LYS	3.6
1	C	102	SER	3.6
1	B	122	VAL	3.6
1	D	29	THR	3.6
1	A	27	TYR	3.5
1	D	28	SER	3.5
1	B	140	MET	3.5
1	D	99	ARG	3.5
1	C	121	ALA	3.5
1	B	95	SER	3.5
1	B	147	SER	3.5
1	C	53	PRO	3.5
1	E	57	GLY	3.4
1	B	21	SER	3.4
1	C	22	ALA	3.4
1	B	120	ALA	3.4
1	A	66	LYS	3.4
1	A	91	THR	3.3
1	C	63	GLN	3.3
1	B	114	GLN	3.3
1	A	57	GLY	3.3
1	D	32	THR	3.3
1	C	91	THR	3.3
1	B	40	LYS	3.3
1	C	44	SER	3.3
1	A	114	GLN	3.3
1	B	64	LEU	3.3
1	B	28	SER	3.3
1	B	79	ASN	3.2
1	B	106	ALA	3.2
1	B	117	LYS	3.2
1	B	133	GLY	3.2
1	D	66	LYS	3.2
1	C	25	PRO	3.2
1	B	145	LEU	3.2

Continued on next page...

Continued from previous page...

Mol	Chain	Res	Type	RSRZ
1	B	121	ALA	3.2
1	C	66	LYS	3.1
1	B	29	THR	3.1
1	B	96	MET	3.1
1	C	32	THR	3.1
1	C	60	THR	3.1
1	D	50	GLU	3.1
1	F	64	LEU	3.1
1	E	92	GLU	3.1
1	A	46	PRO	3.1
1	F	13	ALA	3.1
1	D	95	SER	3.1
1	F	85	VAL	3.1
1	D	139	SER	3.1
1	B	54	LYS	3.0
1	A	21	SER	3.0
1	F	106	ALA	3.0
1	C	129	ALA	3.0
1	C	26	VAL	3.0
1	D	60	THR	3.0
1	A	80	ALA	3.0
1	D	35	VAL	3.0
1	E	56	LYS	3.0
1	D	92	GLU	3.0
1	A	14	ALA	3.0
1	F	66	LYS	3.0
1	B	124	ALA	2.9
1	C	123	ILE	2.9
1	B	132	ALA	2.9
1	C	30	TYR	2.9
1	F	65	LYS	2.9
1	C	50	GLU	2.9
1	D	79	ASN	2.9
1	B	139	SER	2.9
1	A	26	VAL	2.8
1	B	104	LYS	2.8
1	B	33	SER	2.8
1	A	118	VAL	2.8
1	C	48	ALA	2.8
1	D	123	ILE	2.8
1	A	45	THR	2.8
1	F	46	PRO	2.8

Continued on next page...

Continued from previous page...

Mol	Chain	Res	Type	RSRZ
1	C	49	GLN	2.8
1	F	123	ILE	2.8
1	A	90	ASP	2.8
1	A	63	GLN	2.8
1	B	24	ALA	2.8
1	A	87	SER	2.8
1	F	16	LYS	2.8
1	A	62	ASP	2.8
1	B	57	GLY	2.8
1	B	65	LYS	2.8
1	B	58	LEU	2.8
1	F	45	THR	2.8
1	F	83	ASP	2.8
1	C	85	VAL	2.8
1	A	120	ALA	2.8
1	B	116	PHE	2.7
1	F	4	ASP	2.7
1	F	37	ILE	2.7
1	A	131	ASP	2.7
1	D	43	THR	2.7
1	A	39	VAL	2.7
1	A	61	ALA	2.7
1	C	90	ASP	2.7
1	F	131	ASP	2.7
1	B	105	HIS	2.7
1	C	56	LYS	2.7
1	F	17	THR	2.7
1	F	139	SER	2.7
1	A	25	PRO	2.7
1	C	68	ALA	2.7
1	E	9	ALA	2.7
1	F	120	ALA	2.7
1	A	100	ASP	2.7
1	D	12	SER	2.6
1	A	130	GLY	2.6
1	F	60	THR	2.6
1	B	48	ALA	2.6
1	C	64	LEU	2.6
1	E	5	THR	2.6
1	F	62	ASP	2.6
1	B	125	ASP	2.6
1	D	23	TRP	2.6

Continued on next page...

Continued from previous page...

Mol	Chain	Res	Type	RSRZ
1	B	98	LEU	2.6
1	B	30	TYR	2.6
1	C	28	SER	2.6
1	E	44	SER	2.6
1	A	29	THR	2.6
1	E	62	ASP	2.5
1	C	45	THR	2.5
1	C	124	ALA	2.5
1	A	112	ASP	2.5
1	A	125	ASP	2.5
1	E	58	LEU	2.5
1	D	36	ASP	2.5
1	C	33	SER	2.5
1	D	22	ALA	2.5
1	C	130	GLY	2.5
1	B	74	ALA	2.5
1	D	132	ALA	2.5
1	E	66	LYS	2.5
1	F	41	PHE	2.5
1	D	89	ASP	2.5
1	F	63	GLN	2.5
1	A	28	SER	2.5
1	D	61	ALA	2.5
1	B	80	ALA	2.5
1	B	115	TYR	2.5
1	C	131	ASP	2.4
1	C	14	ALA	2.4
1	E	36	ASP	2.4
1	B	53	PRO	2.4
1	E	63	GLN	2.4
1	F	87	SER	2.4
1	C	74	ALA	2.4
1	D	88	MET	2.4
1	E	112	ASP	2.4
1	A	68	ALA	2.4
1	F	79	ASN	2.4
1	B	103	GLY	2.4
1	C	133	GLY	2.4
1	D	8	VAL	2.3
1	C	103	GLY	2.3
1	B	123	ILE	2.3
1	E	43	THR	2.3

Continued on next page...

Continued from previous page...

Mol	Chain	Res	Type	RSRZ
1	A	9	ALA	2.3
1	A	35	VAL	2.3
1	B	82	ASN	2.3
1	B	44	SER	2.3
1	C	141	ILE	2.3
1	C	81	VAL	2.3
1	A	19	ILE	2.3
1	B	97	LYS	2.3
1	D	56	LYS	2.3
1	F	132	ALA	2.3
1	A	143	ILE	2.3
1	B	3	VAL	2.3
1	B	43	THR	2.3
1	C	5	THR	2.3
1	E	17	THR	2.3
1	B	37	ILE	2.3
1	E	64	LEU	2.3
1	F	28	SER	2.3
1	B	72	TRP	2.3
1	A	78	ILE	2.2
1	F	141	ILE	2.2
1	D	130	GLY	2.2
1	D	41	PHE	2.2
1	F	43	THR	2.2
1	B	89	ASP	2.2
1	B	5	THR	2.2
1	D	82	ASN	2.2
1	D	84	ALA	2.2
1	A	89	ASP	2.2
1	C	9	ALA	2.2
1	D	105	HIS	2.2
1	C	3	VAL	2.2
1	C	148	ALA	2.2
1	D	14	ALA	2.2
1	F	14	ALA	2.2
1	F	124	ALA	2.2
1	F	142	CYS	2.2
1	B	83	ASP	2.2
1	A	141	ILE	2.2
1	B	45	THR	2.2
1	D	33	SER	2.1
1	F	1	PRO	2.1

Continued on next page...

Continued from previous page...

Mol	Chain	Res	Type	RSRZ
1	F	127	VAL	2.1
1	B	20	ARG	2.1
1	D	5	THR	2.1
1	D	101	LEU	2.1
1	F	148	ALA	2.1
1	F	129	ALA	2.1
1	F	39	VAL	2.1
1	C	120	ALA	2.1
1	C	27	TYR	2.1
1	C	147	SER	2.1
1	A	96	MET	2.1
1	C	29	THR	2.1
1	C	46	PRO	2.1
1	B	149	TYR	2.1
1	B	41	PHE	2.1
1	A	139	SER	2.1
1	E	50	GLU	2.1
1	D	90	ASP	2.1
1	B	141	ILE	2.1
1	C	62	ASP	2.0
1	A	110	GLN	2.0
1	B	23	TRP	2.0
1	B	38	LEU	2.0
1	A	69	ASP	2.0
1	A	106	ALA	2.0
1	C	19	ILE	2.0
1	F	89	ASP	2.0
1	B	39	VAL	2.0
1	B	76	ARG	2.0
1	D	80	ALA	2.0

6.2 Non-standard residues in protein, DNA, RNA chains ⓘ

There are no non-standard protein/DNA/RNA residues in this entry.

6.3 Carbohydrates ⓘ

There are no carbohydrates in this entry.

6.4 Ligands

In the following table, the Atoms column lists the number of modelled atoms in the group and the number defined in the chemical component dictionary. LLDF column lists the quality of electron density of the group with respect to its neighbouring residues in protein, DNA or RNA chains. The B-factors column lists the minimum, median, 95th percentile and maximum values of B factors of atoms in the group. The column labelled 'Q< 0.9' lists the number of atoms with occupancy less than 0.9.

Mol	Type	Chain	Res	Atoms	RSR	LLDF	B-factors(\AA^2)	Q<0.9
2	HEM	D	150	43/43	0.27	-0.34	38,38,38,38	0
2	HEM	A	150	43/43	0.23	-0.97	52,52,52,52	0
2	HEM	C	150	43/43	0.25	-1.14	42,42,42,42	0
2	HEM	E	150	43/43	0.20	-1.20	40,40,40,40	0
2	HEM	F	150	43/43	0.20	-1.37	42,42,42,42	0
2	HEM	B	150	43/43	0.24	-1.49	38,38,38,38	0

6.5 Other polymers

There are no such residues in this entry.