



wwPDB X-ray Structure Validation Summary Report i

Feb 27, 2014 – 05:52 PM GMT

PDB ID : 4F5D
Title : ERIS/STING in complex with ligand
Authors : Huang, Y.H.; Liu, X.Y.; Su, X.D.
Deposited on : 2012-05-13
Resolution : 3.00 Å(reported)

This is a wwPDB validation summary report for a publicly released PDB entry.

We welcome your comments at validation@mail.wwpdb.org

A user guide is available at <http://wwpdb.org/ValidationPDFNotes.html>

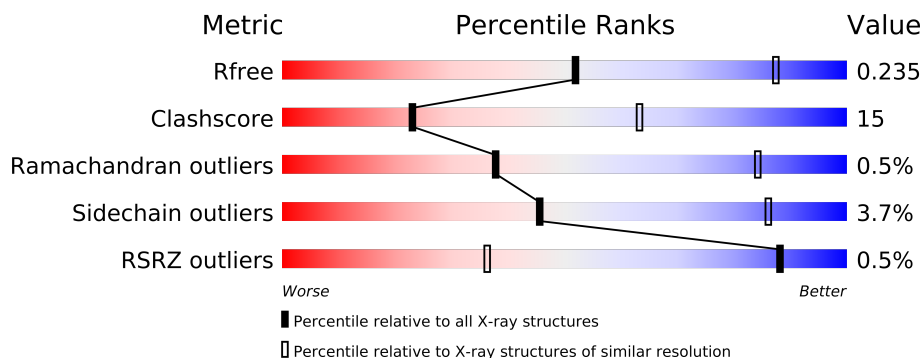
The following versions of software and data (see [references](#)) were used in the production of this report:

MolProbity	:	4.02b-467
Mogul	:	1.15 2013
Xtriage (Phenix)	:	dev-1323
EDS	:	stable22639
Percentile statistics	:	21963
Refmac	:	5.8.0049
CCP4	:	6.3.0 (Settle)
Ideal geometry (proteins)	:	Engh & Huber (2001)
Ideal geometry (DNA, RNA)	:	Parkinson et. al. (1996)
Validation Pipeline (wwPDB-VP)	:	stable22683

1 Overall quality at a glance



The reported resolution of this entry is 3.00 Å.

Percentile scores (ranging between 0-100) for global validation metrics of the entry are shown in the following graphic. The table shows the number of entries on which the scores are based.



Metric	Whole archive (#Entries)	Similar resolution (#Entries, resolution range(Å))
R_{free}	66092	1216 (3.00-3.00)
Clashscore	79885	1594 (3.00-3.00)
Ramachandran outliers	78287	1537 (3.00-3.00)
Sidechain outliers	78261	1540 (3.00-3.00)
RSRZ outliers	66119	1217 (3.00-3.00)

The table below summarises the geometric issues observed across the polymeric chains and their fit to the electron density. The red, orange, yellow and green segments on the lower bar indicate the fraction of residues that contain outliers for ≥ 3 , 2, 1 and 0 types of geometric quality criteria. The upper red bar (where present) indicates the fraction of residues that have poor fit to the electron density.

Mol	Chain	Length	Quality of chain
1	A	256	
1	B	256	

The following table lists non-polymeric compounds that are outliers for geometric or electron-density-fit criteria:

Mol	Type	Chain	Res	Geometry	Electron density
3	MG	B	401	-	X

2 Entry composition

There are 4 unique types of molecules in this entry. The entry contains 3092 atoms, of which 0 are hydrogen and 0 are deuterium.

In the tables below, the ZeroOcc column contains the number of atoms modelled with zero occupancy, the AltConf column contains the number of residues with at least one atom in alternate conformation and the Trace column contains the number of residues modelled with at most 2 atoms.

- Molecule 1 is a protein called Transmembrane protein 173.

Mol	Chain	Residues	Atoms					ZeroOcc	AltConf	Trace
1	A	188	Total	C	N	O	S	0	0	0
			1521	955	268	292	6			
1	B	188	Total	C	N	O	S	0	0	0
			1521	955	268	292	6			

There are 38 discrepancies between the modelled and reference sequences:

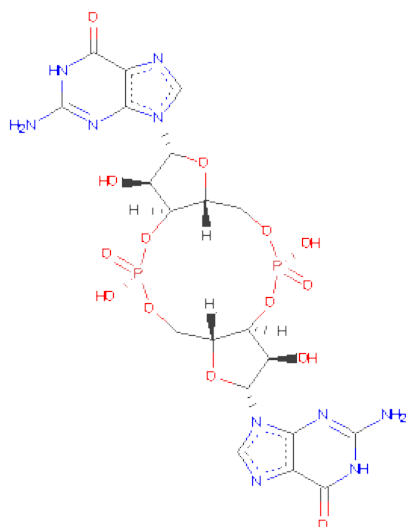
Chain	Residue	Modelled	Actual	Comment	Reference
A	124	GLY	-	EXPRESSION TAG	UNP Q86WV6
A	125	SER	-	EXPRESSION TAG	UNP Q86WV6
A	126	HIS	-	EXPRESSION TAG	UNP Q86WV6
A	127	MET	-	EXPRESSION TAG	UNP Q86WV6
A	128	ALA	-	EXPRESSION TAG	UNP Q86WV6
A	129	SER	-	EXPRESSION TAG	UNP Q86WV6
A	130	MET	-	EXPRESSION TAG	UNP Q86WV6
A	131	THR	-	EXPRESSION TAG	UNP Q86WV6
A	132	GLY	-	EXPRESSION TAG	UNP Q86WV6
A	133	GLY	-	EXPRESSION TAG	UNP Q86WV6
A	134	MET	-	EXPRESSION TAG	UNP Q86WV6
A	135	GLY	-	EXPRESSION TAG	UNP Q86WV6
A	136	ARG	-	EXPRESSION TAG	UNP Q86WV6
A	137	GLY	-	EXPRESSION TAG	UNP Q86WV6
A	138	SER	-	EXPRESSION TAG	UNP Q86WV6
A	139	MET	-	EXPRESSION TAG	UNP Q86WV6
A	140	MET	-	EXPRESSION TAG	UNP Q86WV6
A	230	ALA	GLY	ENGINEERED MUTATION	UNP Q86WV6
A	232	ARG	HIS	SEE REMARK 999	UNP Q86WV6
B	124	GLY	-	EXPRESSION TAG	UNP Q86WV6
B	125	SER	-	EXPRESSION TAG	UNP Q86WV6
B	126	HIS	-	EXPRESSION TAG	UNP Q86WV6
B	127	MET	-	EXPRESSION TAG	UNP Q86WV6
B	128	ALA	-	EXPRESSION TAG	UNP Q86WV6
B	129	SER	-	EXPRESSION TAG	UNP Q86WV6

Continued on next page...

Continued from previous page...

Chain	Residue	Modelled	Actual	Comment	Reference
B	130	MET	-	EXPRESSION TAG	UNP Q86WV6
B	131	THR	-	EXPRESSION TAG	UNP Q86WV6
B	132	GLY	-	EXPRESSION TAG	UNP Q86WV6
B	133	GLY	-	EXPRESSION TAG	UNP Q86WV6
B	134	MET	-	EXPRESSION TAG	UNP Q86WV6
B	135	GLY	-	EXPRESSION TAG	UNP Q86WV6
B	136	ARG	-	EXPRESSION TAG	UNP Q86WV6
B	137	GLY	-	EXPRESSION TAG	UNP Q86WV6
B	138	SER	-	EXPRESSION TAG	UNP Q86WV6
B	139	MET	-	EXPRESSION TAG	UNP Q86WV6
B	140	MET	-	EXPRESSION TAG	UNP Q86WV6
B	230	ALA	GLY	ENGINEERED MUTATION	UNP Q86WV6
B	232	ARG	HIS	SEE REMARK 999	UNP Q86WV6

- Molecule 2 is 9,9'-[(2R,3R,3AS,5S,7AR,9R,10R,10AS,12S,14AR)-3,5,10,12-TETRAHYDROXY-5,12-DIOXIDOOCTAHYDRO-2H,7H-DIFURO[3,2-D:3',2'-J][1,3,7,9,2,8]TETRAOXA DIPHOSPHACYCLODODECINE-2,9-DIYL]BIS(2-AMINO-1,9-DIHYDRO-6H-PURIN-6-ONE) (three-letter code: C2E) (formula: C₂₀H₂₄N₁₀O₁₄P₂).



Mol	Chain	Residues	Atoms				ZeroOcc	AltConf
2	A	1	Total	C	N	O	P	0
			46	20	10	14	2	

- Molecule 3 is MAGNESIUM ION (three-letter code: MG) (formula: Mg).

Mol	Chain	Residues	Atoms		ZeroOcc	AltConf
3	B	1	Total 1	Mg 1	0	0
3	A	1	Total 1	Mg 1	0	0

- Molecule 4 is water.

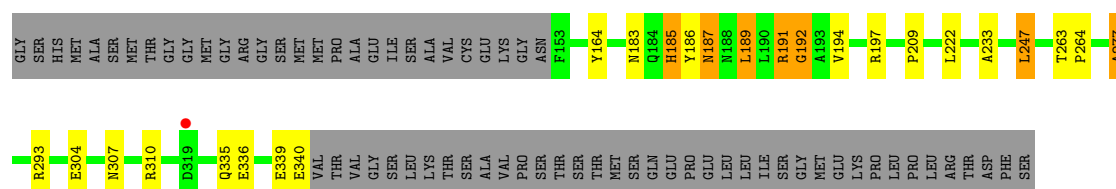
Mol	Chain	Residues	Atoms		ZeroOcc	AltConf
4	A	1	Total 1	O 1	0	0
4	B	1	Total 1	O 1	0	0

3 Residue-property plots

These plots are drawn for all protein, RNA and DNA chains in the entry. The first graphic for a chain summarises the proportions of errors displayed in the second graphic. The second graphic shows the sequence view annotated by issues in geometry and electron density. Residues are color-coded according to the number of geometric quality criteria for which they contain at least one outlier: green = 0, yellow = 1, orange = 2 and red = 3 or more. A red dot above a residue indicates a poor fit to the electron density ($RSRZ > 2$). Stretches of 2 or more consecutive residues without any outlier are shown as a green connector. Residues present in the sample, but not in the model, are shown in grey.

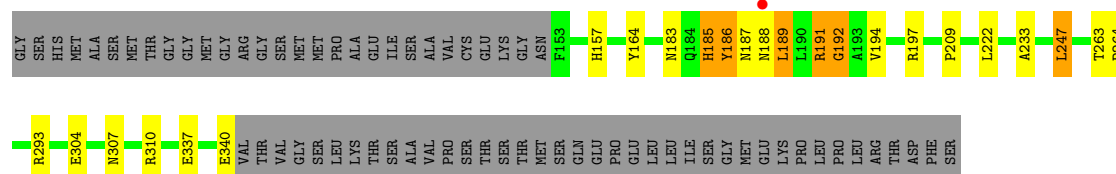
- Molecule 1: Transmembrane protein 173

Chain A: 



- Molecule 1: Transmembrane protein 173

Chain B: 



4 Data and refinement statistics

Property	Value	Source
Space group	P 41	Depositor
Cell constants a, b, c, α , β , γ	111.85Å 111.85Å 35.02Å 90.00° 90.00° 90.00°	Depositor
Resolution (Å)	19.77 – 3.00 19.77 – 3.00	Depositor EDS
% Data completeness (in resolution range)	98.7 (19.77-3.00) 98.8 (19.77-3.00)	Depositor EDS
R_{merge}	(Not available)	Depositor
R_{sym}	(Not available)	Depositor
$\langle I/\sigma(I) \rangle$ ¹	2.44 (at 2.98Å)	Xtriage
Refinement program	PHENIX (phenix.refine: 1.6.4_486)	Depositor
R, R_{free}	0.211 , 0.242 0.208 , 0.235	Depositor DCC
R_{free} test set	898 reflections (10.11%)	DCC
Wilson B-factor (Å ²)	55.0	Xtriage
Anisotropy	0.107	Xtriage
Bulk solvent k_{sol} (e/Å ³), B_{sol} (Å ²)	0.33 , 28.4	EDS
Estimated twinning fraction	0.459 for h,-k,-l	Xtriage
L-test for twinning	$\langle L \rangle = 0.49$, $\langle L^2 \rangle = 0.33$	Xtriage
Outliers	1 of 8899 reflections (0.011%)	Xtriage
F_o, F_c correlation	0.90	EDS
Total number of atoms	3092	wwPDB-VP
Average B, all atoms (Å ²)	58.0	wwPDB-VP

Xtriage's analysis on translational NCS is as follows: *The largest off-origin peak in the Patterson function is 7.72% of the height of the origin peak. No significant pseudotranslation is detected.*

¹Intensities estimated from amplitudes.

5 Model quality

5.1 Standard geometry

Bond lengths and bond angles in the following residue types are not validated in this section: MG, C2E

The Z score for a bond length (or angle) is the number of standard deviations the observed value is removed from the expected value. A bond length (or angle) with $|Z| > 5$ is considered an outlier worth inspection. RMSZ is the root-mean-square of all Z scores of the bond lengths (or angles).

Mol	Chain	Bond lengths		Bond angles	
		RMSZ	$\# Z > 5$	RMSZ	$\# Z > 5$
1	A	0.32	0/1550	0.52	1/2100 (0.0%)
1	B	0.34	0/1550	0.52	1/2100 (0.0%)
All	All	0.33	0/3100	0.52	2/4200 (0.0%)

Chiral center outliers are detected by calculating the chiral volume of a chiral center and verifying if the center is modelled as a planar moiety or with the opposite hand. A planarity outlier is detected by checking planarity of atoms in a peptide group, atoms in a mainchain group or atoms of a sidechain that are expected to be planar.

Mol	Chain	#Chirality outliers	#Planarity outliers
1	A	0	1

There are no bond length outliers.

All (2) bond angle outliers are listed below:

Mol	Chain	Res	Type	Atoms	Z	Observed($^{\circ}$)	Ideal($^{\circ}$)
1	A	192	GLY	N-CA-C	-7.22	95.05	113.10
1	B	192	GLY	N-CA-C	-6.74	96.25	113.10

There are no chirality outliers.

All (1) planarity outliers are listed below:

Mol	Chain	Res	Type	Group
1	A	277	ALA	Peptide

5.2 Close contacts

In the following table, the Non-H and H(model) columns list the number of non-hydrogen atoms and hydrogen atoms in the chain respectively. The H(added) column lists the number of hydrogens

added by MolProbity. The Clashes column lists the number of clashes within the asymmetric unit, and the number in parentheses is this value normalized per 1000 atoms of the molecule in the chain. The Symm-Clashes column gives symmetry related clashes, in the same way as for the Clashes column.

Mol	Chain	Non-H	H(model)	H(added)	Clashes	Symm-Clashes
1	A	1521	0	0	24	0
1	B	1521	0	0	24	0
2	A	46	0	0	0	0
3	A	1	0	0	0	0
3	B	1	0	0	0	0
4	A	1	0	0	0	0
4	B	1	0	0	0	0
All	All	3092	0	0	45	0

Clashscore is defined as the number of clashes calculated for the entry per 1000 atoms (including hydrogens) of the entry. The overall clashscore for this entry is 15.

The worst 5 of 45 close contacts within the same asymmetric unit are listed below.

Atom-1	Atom-2	Distance(Å)	Clash(Å)
1:B:187:ASN:CB	1:B:188:ASN:CA	2.30	1.09
1:A:189:LEU:CD1	1:A:189:LEU:C	2.30	0.99
1:B:187:ASN:CB	1:B:189:LEU:N	2.30	0.95
1:A:185:HIS:ND1	1:A:185:HIS:C	2.31	0.84
1:A:186:TYR:C	1:A:187:ASN:ND2	2.31	0.84

There are no symmetry-related clashes.

5.3 Torsion angles

5.3.1 Protein backbone ⓘ

In the following table, the Percentiles column shows the percent Ramachandran outliers of the chain as a percentile score with respect to all X-ray entries followed by that with respect to entries of similar resolution. The Analysed column shows the number of residues for which the backbone conformation was analysed, and the total number of residues.

Mol	Chain	Analysed	Favoured	Allowed	Outliers	Percentiles	
1	A	186/256 (73%)	172 (92%)	13 (7%)	1 (0%)	38	84
1	B	186/256 (73%)	174 (94%)	11 (6%)	1 (0%)	38	84
All	All	372/512 (73%)	346 (93%)	24 (6%)	2 (0%)	38	84

All (2) Ramachandran outliers are listed below:

Mol	Chain	Res	Type
1	A	293	ARG
1	B	293	ARG

5.3.2 Protein sidechains ⓘ

In the following table, the Percentiles column shows the percent sidechain outliers of the chain as a percentile score with respect to all X-ray entries followed by that with respect to entries of similar resolution. The Analysed column shows the number of residues for which the sidechain conformation was analysed, and the total number of residues.

Mol	Chain	Analysed	Rotameric	Outliers	Percentiles	
1	A	164/220 (74%)	158 (96%)	6 (4%)	45	86
1	B	164/220 (74%)	158 (96%)	6 (4%)	45	86
All	All	328/440 (74%)	316 (96%)	12 (4%)	45	86

5 of 12 residues with a non-rotameric sidechain are listed below:

Mol	Chain	Res	Type
1	A	247	LEU
1	B	185	HIS
1	B	191	ARG
1	A	222	LEU
1	B	189	LEU

Some sidechains can be flipped to improve hydrogen bonding and reduce clashes. There are no such sidechains identified.

5.3.3 RNA ⓘ

There are no RNA chains in this entry.

5.4 Non-standard residues in protein, DNA, RNA chains ⓘ

There are no non-standard protein/DNA/RNA residues in this entry.

5.5 Carbohydrates ⓘ

There are no carbohydrates in this entry.

5.6 Ligand geometry ⓘ

Of 3 ligands modelled in this entry, 2 are monoatomic - leaving 1 for Mogul analysis.

In the following table, the Counts columns list the number of bonds (or angles) for which Mogul statistics could be retrieved, the number of bonds (or angles) that are observed in the model and the number of bonds (or angles) that are defined in the chemical component dictionary. The Link column lists molecule types, if any, to which the group is linked. The Z score for a bond length (or angle) is the number of standard deviations the observed value is removed from the expected value. A bond length (or angle) with $|Z| > 2$ is considered an outlier worth inspection. RMSZ is the root-mean-square of all Z scores of the bond lengths (or angles).

Mol	Type	Chain	Res	Link	Bond lengths			Bond angles		
					Counts	RMSZ	# $ Z > 2$	Counts	RMSZ	# $ Z > 2$
2	C2E	A	401	3	52,52,52	3.88	44 (84%)	76,82,82	5.05	34 (44%)

In the following table, the Chirals column lists the number of chiral outliers, the number of chiral centers analysed, the number of these observed in the model and the number defined in the chemical component dictionary. Similar counts are reported in the Torsion and Rings columns. '-' means no outliers of that kind were identified.

Mol	Type	Chain	Res	Link	Chirals	Torsions	Rings
2	C2E	A	401	3	-	0/30/62/62	0/0/7/7

The worst 5 of 44 bond length outliers are listed below:

Mol	Chain	Res	Type	Atoms	Z	Observed(Å)	Ideal(Å)
2	A	401	C2E	C81-N91	-8.29	1.24	1.36
2	A	401	C2E	C8-N9	-7.91	1.24	1.36
2	A	401	C2E	C8-N7	-7.38	1.20	1.34
2	A	401	C2E	C81-N71	-7.32	1.20	1.34
2	A	401	C2E	C2'-C3'	-6.94	1.36	1.53

The worst 5 of 34 bond angle outliers are listed below:

Mol	Chain	Res	Type	Atoms	Z	Observed(°)	Ideal(°)
2	A	401	C2E	C61-C51-N71	29.85	138.16	134.14
2	A	401	C2E	C6-C5-N7	16.52	136.37	134.14
2	A	401	C2E	O5A-P11-O3'	8.20	128.07	104.68
2	A	401	C2E	N3-C4-N9	8.19	138.92	126.91
2	A	401	C2E	N31-C41-N91	8.06	138.74	126.91

There are no chirality outliers.

There are no torsion outliers.

There are no ring outliers.

5.7 Other polymers ⓘ

There are no such residues in this entry.

5.8 Polymer linkage issues

There are no chain breaks in this entry.

6 Fit of model and data ⓘ

6.1 Protein, DNA and RNA chains ⓘ

In the following table, the column labelled ‘#RSRZ> 2’ contains the number (and percentage) of RSRZ outliers, followed by percent RSRZ outliers for the chain as percentile scores relative to all X-ray entries and entries of similar resolution. The OWAB column contains the minimum, median, 95th percentile and maximum values of the occupancy-weighted average B-factor per residue. The column labelled ‘Q< 0.9’ lists the number of (and percentage) of residues with an average occupancy less than 0.9.

Mol	Chain	Analysed	<RSRZ>	#RSRZ>2	OWAB(Å ²)	Q<0.9
1	A	188/256 (73%)	-0.14	1 (0%) 88 36	22, 49, 135, 175	0
1	B	188/256 (73%)	-0.14	1 (0%) 88 36	23, 50, 136, 175	0
All	All	376/512 (73%)	-0.14	2 (0%) 88 36	22, 50, 136, 175	0

All (2) RSRZ outliers are listed below:

Mol	Chain	Res	Type	RSRZ
1	B	188	ASN	2.9
1	A	319	ASP	2.0

6.2 Non-standard residues in protein, DNA, RNA chains ⓘ

There are no non-standard protein/DNA/RNA residues in this entry.

6.3 Carbohydrates ⓘ

There are no carbohydrates in this entry.

6.4 Ligands ⓘ

In the following table, the Atoms column lists the number of modelled atoms in the group and the number defined in the chemical component dictionary. LLDF column lists the quality of electron density of the group with respect to its neighbouring residues in protein, DNA or RNA chains. The B-factors column lists the minimum, median, 95th percentile and maximum values of B factors of atoms in the group. The column labelled ‘Q< 0.9’ lists the number of atoms with occupancy less than 0.9.

Mol	Type	Chain	Res	Atoms	RSR	LLDF	B-factors(Å ²)	Q<0.9
3	MG	B	401	1/1	0.35	4.49	59,59,59,59	0

Continued on next page...

Continued from previous page...

Mol	Type	Chain	Res	Atoms	RSR	LLDF	B-factors(\AA^2)	Q<0.9
3	MG	A	402	1/1	0.29	1.69	55,55,55,55	0
2	C2E	A	401	46/46	0.14	-1.22	14,37,53,64	0

6.5 Other polymers ⓘ

There are no such residues in this entry.