



Full wwPDB X-ray Structure Validation Report ⓘ

Feb 26, 2014 – 10:51 PM GMT

PDB ID : 3F6X
Title : c-Src kinase domain in complex with small molecule inhibitor
Authors : Seeliger, M.A.; Statsuk, A.V.; Maly, D.J.; Patrick, P.Z.; Kuriyan, J.; Shokat, K.M.
Deposited on : 2008-11-06
Resolution : 2.35 Å(reported)

This is a full wwPDB validation report for a publicly released PDB entry.
We welcome your comments at validation@mail.wwpdb.org
A user guide is available at <http://wwpdb.org/ValidationPDFNotes.html>

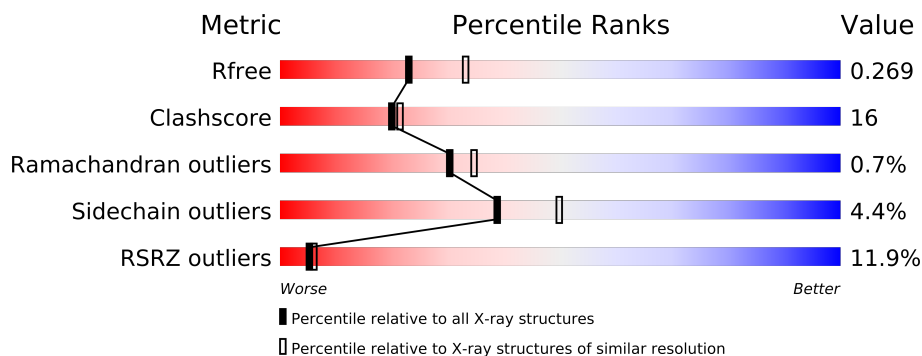
The following versions of software and data (see [references](#)) were used in the production of this report:

MolProbity	:	4.02b-467
Mogul	:	1.15 2013
Xtriage (Phenix)	:	dev-1323
EDS	:	stable22639
Percentile statistics	:	21963
Refmac	:	5.8.0049
CCP4	:	6.3.0 (Settle)
Ideal geometry (proteins)	:	Engh & Huber (2001)
Ideal geometry (DNA, RNA)	:	Parkinson et. al. (1996)
Validation Pipeline (wwPDB-VP)	:	stable22683

1 Overall quality at a glance

The reported resolution of this entry is 2.35 Å.

Percentile scores (ranging between 0-100) for global validation metrics of the entry are shown in the following graphic. The table shows the number of entries on which the scores are based.



Metric	Whole archive (#Entries)	Similar resolution (#Entries, resolution range(Å))
R_{free}	66092	3327 (2.40-2.32)
Clashscore	79885	1064 (2.38-2.34)
Ramachandran outliers	78287	1048 (2.38-2.34)
Sidechain outliers	78261	1049 (2.38-2.34)
RSRZ outliers	66119	3330 (2.40-2.32)

The table below summarises the geometric issues observed across the polymeric chains and their fit to the electron density. The red, orange, yellow and green segments on the lower bar indicate the fraction of residues that contain outliers for ≥ 3 , 2, 1 and 0 types of geometric quality criteria. The upper red bar (where present) indicates the fraction of residues that have poor fit to the electron density.

Mol	Chain	Length	Quality of chain
1	A	286	
1	B	286	
1	C	286	
1	D	286	

2 Entry composition

There are 3 unique types of molecules in this entry. The entry contains 8872 atoms, of which 0 are hydrogen and 0 are deuterium.

In the tables below, the ZeroOcc column contains the number of atoms modelled with zero occupancy, the AltConf column contains the number of residues with at least one atom in alternate conformation and the Trace column contains the number of residues modelled with at most 2 atoms.

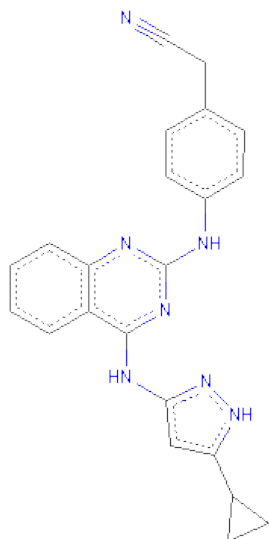
- Molecule 1 is a protein called Proto-oncogene tyrosine-protein kinase Src.

Mol	Chain	Residues	Atoms					ZeroOcc	AltConf	Trace
1	A	264	Total	C	N	O	S	0	0	0
			2124	1364	355	389	16			
1	B	267	Total	C	N	O	S	0	0	0
			2137	1372	358	391	16			
1	C	265	Total	C	N	O	S	0	0	0
			2133	1373	357	387	16			
1	D	267	Total	C	N	O	S	0	0	0
			2142	1375	359	391	17			

There are 12 discrepancies between the modelled and reference sequences:

Chain	Residue	Modelled	Actual	Comment	Reference
A	248	GLY	-	EXPRESSION TAG	UNP P00523
A	249	HIS	-	EXPRESSION TAG	UNP P00523
A	250	MET	-	EXPRESSION TAG	UNP P00523
B	248	GLY	-	EXPRESSION TAG	UNP P00523
B	249	HIS	-	EXPRESSION TAG	UNP P00523
B	250	MET	-	EXPRESSION TAG	UNP P00523
C	248	GLY	-	EXPRESSION TAG	UNP P00523
C	249	HIS	-	EXPRESSION TAG	UNP P00523
C	250	MET	-	EXPRESSION TAG	UNP P00523
D	248	GLY	-	EXPRESSION TAG	UNP P00523
D	249	HIS	-	EXPRESSION TAG	UNP P00523
D	250	MET	-	EXPRESSION TAG	UNP P00523

- Molecule 2 is [4-({4-[(5-CYCLOPROPYL-1H-PYRAZOL-3-YL)AMINO]QUINAZOLIN-2-YL}AMINO)PHENYL]ACETONITRILE (three-letter code: IHH) (formula: C₂₂H₁₉N₇).



Mol	Chain	Residues	Atoms			ZeroOcc	AltConf
2	A	1	Total	C	N	0	0
			29	22	7		
2	B	1	Total	C	N	0	0
			29	22	7		
2	C	1	Total	C	N	0	0
			29	22	7		
2	D	1	Total	C	N	0	0
			29	22	7		

- Molecule 3 is water.

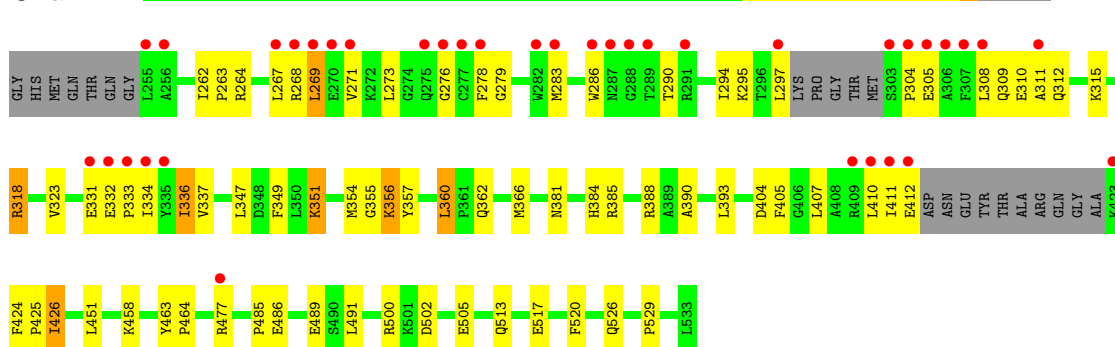
Mol	Chain	Residues	Atoms		ZeroOcc	AltConf
3	A	51	Total	O	0	0
			51	51		
3	B	57	Total	O	0	0
			57	57		
3	C	47	Total	O	0	0
			47	47		
3	D	65	Total	O	0	0
			65	65		

3 Residue-property plots

These plots are drawn for all protein, RNA and DNA chains in the entry. The first graphic for a chain summarises the proportions of errors displayed in the second graphic. The second graphic shows the sequence view annotated by issues in geometry and electron density. Residues are color-coded according to the number of geometric quality criteria for which they contain at least one outlier: green = 0, yellow = 1, orange = 2 and red = 3 or more. A red dot above a residue indicates a poor fit to the electron density ($RSRZ > 2$). Stretches of 2 or more consecutive residues without any outlier are shown as a green connector. Residues present in the sample, but not in the model, are shown in grey.

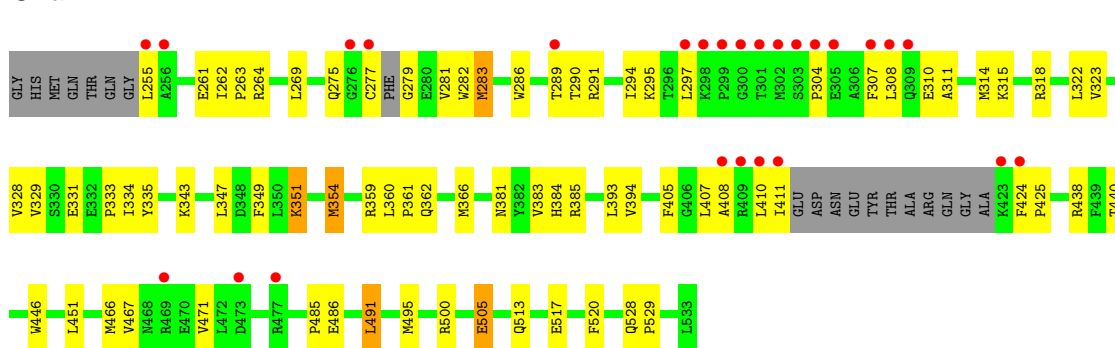
- Molecule 1: Proto-oncogene tyrosine-protein kinase Src

Chain A:



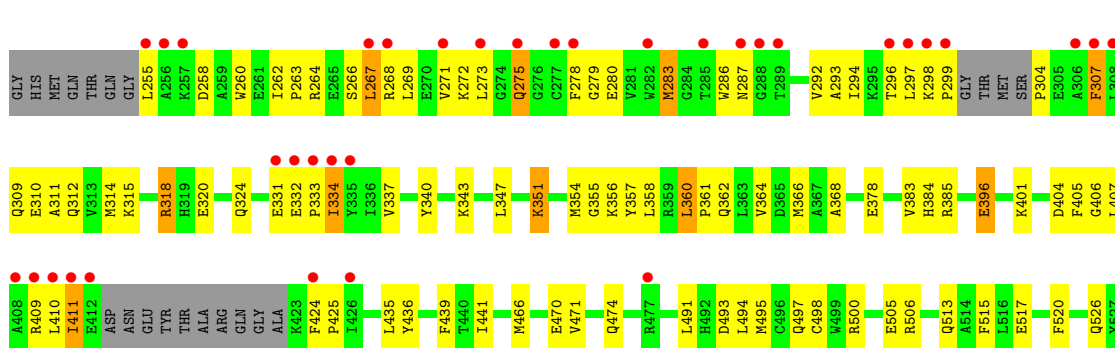
- Molecule 1: Proto-oncogene tyrosine-protein kinase Src

Chain B:



- Molecule 1: Proto-oncogene tyrosine-protein kinase Src

Chain C:



4 Data and refinement statistics

Property	Value	Source
Space group	P 1	Depositor
Cell constants a, b, c, α , β , γ	63.70Å 74.49Å 84.65Å 89.06° 89.97° 78.43°	Depositor
Resolution (Å)	34.99 – 2.35 34.98 – 2.35	Depositor EDS
% Data completeness (in resolution range)	79.8 (34.99-2.35) 80.2 (34.98-2.35)	Depositor EDS
R_{merge}	(Not available)	Depositor
R_{sym}	0.06	Depositor
$\langle I/\sigma(I) \rangle$ ¹	0.00 (at 2.34Å)	Xtriage
Refinement program	CNS	Depositor
R, R_{free}	0.234 , 0.266 0.234 , 0.269	Depositor DCC
R_{free} test set	2572 reflections (5.35%)	DCC
Wilson B-factor (Å ²)	26.0	Xtriage
Anisotropy	0.311	Xtriage
Bulk solvent k_{sol} (e/Å ³), B_{sol} (Å ²)	0.38 , 32.7	EDS
Estimated twinning fraction	0.028 for -h,-k,l	Xtriage
L-test for twinning	$\langle L \rangle = 0.50$, $\langle L^2 \rangle = 0.33$	Xtriage
Outliers	0 of 58922 reflections	Xtriage
F_o, F_c correlation	0.94	EDS
Total number of atoms	8872	wwPDB-VP
Average B, all atoms (Å ²)	36.0	wwPDB-VP

Xtriage's analysis on translational NCS is as follows: *The analyses of the Patterson function reveals a significant off-origin peak that is 91.92 % of the origin peak, indicating pseudo translational symmetry. The chance of finding a peak of this or larger height randomly in a structure without pseudo translational symmetry is equal to 1.1880e-08. The detected translational NCS is most likely also responsible for the elevated intensity ratio.*

¹Intensities estimated from amplitudes.

5 Model quality

5.1 Standard geometry

Bond lengths and bond angles in the following residue types are not validated in this section: IHH

The Z score for a bond length (or angle) is the number of standard deviations the observed value is removed from the expected value. A bond length (or angle) with $|Z| > 5$ is considered an outlier worth inspection. RMSZ is the root-mean-square of all Z scores of the bond lengths (or angles).

Mol	Chain	Bond lengths		Bond angles	
		RMSZ	$\# Z > 5$	RMSZ	$\# Z > 5$
1	A	0.36	0/2174	0.58	0/2942
1	B	0.35	0/2187	0.61	0/2961
1	C	0.36	0/2184	0.61	0/2955
1	D	0.36	0/2194	0.60	0/2970
All	All	0.36	0/8739	0.60	0/11828

There are no bond length outliers.

There are no bond angle outliers.

There are no chirality outliers.

There are no planarity outliers.

5.2 Close contacts

In the following table, the Non-H and H(model) columns list the number of non-hydrogen atoms and hydrogen atoms in the chain respectively. The H(added) column lists the number of hydrogens added by MolProbity. The Clashes column lists the number of clashes within the asymmetric unit, and the number in parentheses is this value normalized per 1000 atoms of the molecule in the chain. The Symm-Clashes column gives symmetry related clashes, in the same way as for the Clashes column.

Mol	Chain	Non-H	H(model)	H(added)	Clashes	Symm-Clashes
1	A	2124	0	2104	68	0
1	B	2137	0	2123	57	0
1	C	2133	0	2125	75	0
1	D	2142	0	2124	54	0
2	A	29	0	19	6	0
2	B	29	0	19	9	0
2	C	29	0	19	5	0
2	D	29	0	19	8	0

Continued on next page...

Continued from previous page...

Mol	Chain	Non-H	H(model)	H(added)	Clashes	Symm-Clashes
3	A	51	0	0	2	0
3	B	57	0	0	1	0
3	C	47	0	0	1	0
3	D	65	0	0	1	0
All	All	8872	0	8552	275	0

Clashscore is defined as the number of clashes calculated for the entry per 1000 atoms (including hydrogens) of the entry. The overall clashscore for this entry is 16.

All (275) close contacts within the same asymmetric unit are listed below.

Atom-1	Atom-2	Distance(Å)	Clash(Å)
1:C:334:ILE:H	1:C:334:ILE:HD13	1.29	0.96
2:B:1:IHH:H17	2:B:1:IHH:H23	1.52	0.91
2:D:1:IHH:H23	2:D:1:IHH:H17	1.54	0.90
1:C:262:ILE:HD13	1:C:286:TRP:HE1	1.44	0.83
2:B:1:IHH:N9	2:B:1:IHH:H17	1.93	0.82
1:B:289:THR:HG23	1:B:290:THR:HG23	1.61	0.80
1:D:504:GLU:H	1:D:504:GLU:CD	1.85	0.80
1:C:513:GLN:O	1:C:517:GLU:HG3	1.84	0.77
2:C:1:IHH:H16	2:C:1:IHH:H28	1.66	0.77
2:A:1:IHH:H16	2:A:1:IHH:H28	1.64	0.76
2:D:1:IHH:N9	2:D:1:IHH:H17	1.99	0.75
2:A:1:IHH:N9	2:A:1:IHH:H17	2.02	0.75
1:C:334:ILE:CD1	1:C:334:ILE:H	1.99	0.75
1:C:310:GLU:HG3	1:C:405:PHE:C	2.08	0.74
1:B:269:LEU:HD23	1:B:294:ILE:HD12	1.68	0.74
1:C:262:ILE:CD1	1:C:286:TRP:HE1	2.02	0.73
1:D:283:MET:HG3	1:D:340:TYR:CE1	2.24	0.72
1:C:309:GLN:NE2	1:C:312:GLN:HG3	2.05	0.72
1:D:363:LEU:HA	1:D:366:MET:HE3	1.71	0.71
1:B:347:LEU:O	1:B:351:LYS:HG2	1.88	0.71
1:C:410:LEU:H	1:C:410:LEU:HD23	1.55	0.71
1:C:297:LEU:O	1:C:297:LEU:HD23	1.90	0.71
1:C:298:LYS:HB3	1:C:299:PRO:HD3	1.73	0.70
1:B:297:LEU:HD22	1:B:307:PHE:HB2	1.73	0.70
1:C:334:ILE:N	1:C:334:ILE:HD13	2.07	0.69
1:D:297:LEU:HD11	1:D:302:MET:HB2	1.73	0.69
1:D:283:MET:HE1	1:D:291:ARG:HH21	1.58	0.69
1:D:473:ASP:HB2	1:D:477:ARG:NH2	2.07	0.69
1:C:356:LYS:HE3	1:C:357:TYR:CZ	2.27	0.69
1:B:466:MET:CE	1:B:471:VAL:HA	2.23	0.69
1:A:347:LEU:O	1:A:351:LYS:HG2	1.93	0.69

Continued on next page...

Continued from previous page...

Atom-1	Atom-2	Distance(Å)	Clash(Å)
1:B:311:ALA:O	1:B:315:LYS:HG3	1.93	0.68
1:B:393:LEU:HD11	2:B:1:IHH:H28	1.75	0.68
1:A:268:ARG:HG3	1:A:268:ARG:O	1.93	0.68
1:D:278:PHE:O	1:D:297:LEU:HD12	1.93	0.68
2:C:1:IHH:H17	2:C:1:IHH:N9	2.08	0.68
1:C:378:GLU:HG3	1:C:441:ILE:HG12	1.76	0.66
1:A:310:GLU:HG3	1:A:405:PHE:C	2.16	0.66
1:A:407:LEU:HD13	1:A:424:PHE:CE1	2.31	0.65
1:A:295:LYS:HB2	1:A:336:ILE:CG2	2.27	0.65
1:B:381:ASN:O	1:B:410:LEU:HD12	1.97	0.64
1:A:349:PHE:CZ	1:A:354:MET:HG2	2.32	0.64
2:A:1:IHH:H17	2:A:1:IHH:H23	1.79	0.64
1:A:513:GLN:O	1:A:517:GLU:HG3	1.98	0.64
1:A:334:ILE:HD12	1:A:334:ILE:H	1.62	0.63
2:C:1:IHH:H17	2:C:1:IHH:H23	1.80	0.63
1:D:257:LYS:HE3	1:D:261:GLU:HG2	1.80	0.63
1:A:407:LEU:HD13	1:A:424:PHE:HE1	1.63	0.63
1:C:262:ILE:CG1	1:C:263:PRO:HD2	2.29	0.62
1:C:280:GLU:HG3	1:C:299:PRO:HG2	1.79	0.62
1:B:297:LEU:HD22	1:B:307:PHE:CB	2.29	0.62
1:A:331:GLU:O	1:A:334:ILE:HA	2.00	0.62
1:B:323:VAL:HG21	1:B:393:LEU:HD12	1.82	0.62
1:A:410:LEU:O	1:A:412:GLU:HG3	2.01	0.61
1:D:278:PHE:HA	1:D:302:MET:HG3	1.82	0.61
1:A:500:ARG:HD3	1:A:505:GLU:HG3	1.82	0.61
1:D:381:ASN:O	1:D:410:LEU:HD12	2.00	0.61
1:D:426:ILE:HD11	1:D:472:LEU:HB2	1.83	0.61
1:B:383:VAL:HG23	1:B:411:ILE:HB	1.84	0.60
1:C:356:LYS:HE3	1:C:357:TYR:OH	2.02	0.60
1:C:262:ILE:HG13	1:C:263:PRO:HD2	1.84	0.59
1:A:279:GLY:HA3	1:A:297:LEU:HA	1.84	0.59
1:C:267:LEU:HD23	1:C:267:LEU:N	2.16	0.59
1:A:354:MET:HE1	1:C:435:LEU:HB3	1.84	0.59
1:D:312:GLN:HA	1:D:315:LYS:HD3	1.85	0.58
1:A:273:LEU:HD11	1:A:283:MET:HB2	1.85	0.58
1:D:466:MET:CE	1:D:471:VAL:HA	2.34	0.57
1:B:362:GLN:O	1:B:366:MET:HG3	2.03	0.57
1:C:318:ARG:HD3	1:C:324:GLN:OE1	2.03	0.57
1:C:355:GLY:HA2	1:C:358:LEU:HD12	1.86	0.57
1:B:513:GLN:O	1:B:517:GLU:HG3	2.04	0.57
1:B:354:MET:HB2	3:B:72:HOH:O	2.04	0.57
1:D:513:GLN:O	1:D:517:GLU:HG3	2.05	0.56

Continued on next page...

Continued from previous page...

Atom-1	Atom-2	Distance(Å)	Clash(Å)
2:B:1:IHH:N9	2:B:1:IHH:C17	2.63	0.56
1:A:269:LEU:H	1:A:269:LEU:HD23	1.70	0.56
1:A:334:ILE:HD12	1:A:334:ILE:N	2.20	0.56
2:D:1:IHH:H16	2:D:1:IHH:C28	2.34	0.56
1:A:295:LYS:HB2	1:A:336:ILE:HG23	1.86	0.56
1:D:322:LEU:HG	1:D:405:PHE:HZ	1.70	0.56
1:A:311:ALA:O	1:A:315:LYS:HG3	2.05	0.56
1:D:378:GLU:HG3	1:D:441:ILE:HG12	1.86	0.56
1:B:467:VAL:O	1:B:471:VAL:HG23	2.06	0.55
1:A:485:PRO:O	1:A:486:GLU:HB2	2.06	0.55
1:A:451:LEU:HD23	1:A:451:LEU:O	2.07	0.55
2:B:1:IHH:H16	2:B:1:IHH:C28	2.35	0.55
1:C:310:GLU:HG2	1:C:314:MET:HE2	1.89	0.55
1:C:294:ILE:N	1:C:294:ILE:HD12	2.22	0.54
1:C:383:VAL:HG23	1:C:411:ILE:HG23	1.90	0.54
1:B:451:LEU:HD23	1:B:451:LEU:O	2.07	0.54
1:C:466:MET:CE	1:C:471:VAL:HA	2.38	0.54
1:B:318:ARG:HB2	1:B:318:ARG:NH1	2.23	0.54
1:B:261:GLU:HA	1:B:328:VAL:O	2.06	0.54
1:C:384:HIS:O	1:C:385:ARG:HB2	2.08	0.54
1:B:264:ARG:NH2	1:B:331:GLU:O	2.40	0.54
1:D:283:MET:CE	1:D:291:ARG:HH21	2.21	0.54
1:B:411:ILE:HD12	1:B:440:THR:HA	1.89	0.54
1:C:273:LEU:HD11	1:C:283:MET:HB2	1.88	0.54
1:D:375:ALA:O	1:D:379:ARG:HG3	2.08	0.53
2:A:1:IHH:C17	2:A:1:IHH:N9	2.70	0.53
1:D:283:MET:HE1	1:D:291:ARG:NH2	2.23	0.53
1:A:331:GLU:OE2	1:A:331:GLU:HA	2.07	0.53
1:C:354:MET:HB2	3:C:129:HOH:O	2.09	0.53
2:A:1:IHH:C16	2:A:1:IHH:H28	2.34	0.53
1:A:502:ASP:HB3	1:A:505:GLU:HG2	1.90	0.52
1:C:258:ASP:OD1	1:C:260:TRP:HB2	2.09	0.52
1:C:383:VAL:CG2	1:C:411:ILE:HG23	2.39	0.52
2:D:1:IHH:H28	2:D:1:IHH:H16	1.91	0.52
1:D:393:LEU:HD11	2:D:1:IHH:H28	1.92	0.52
2:B:1:IHH:H28	2:B:1:IHH:H16	1.91	0.52
1:B:318:ARG:HH11	1:B:318:ARG:HB2	1.74	0.52
1:A:318:ARG:HH11	1:A:318:ARG:HG2	1.75	0.52
1:D:310:GLU:O	1:D:314:MET:HG3	2.09	0.52
1:D:270:GLU:HG3	1:D:284:GLY:HA2	1.92	0.52
1:C:268:ARG:HG3	1:C:268:ARG:O	2.10	0.51
1:C:260:TRP:NE1	1:C:315:LYS:HB2	2.26	0.51

Continued on next page...

Continued from previous page...

Atom-1	Atom-2	Distance(Å)	Clash(Å)
1:A:332:GLU:HA	1:A:333:PRO:C	2.29	0.51
2:B:1:IHH:C17	2:B:1:IHH:H23	2.35	0.51
1:D:261:GLU:HA	1:D:328:VAL:O	2.09	0.51
1:C:409:ARG:NH2	1:C:439:PHE:HB2	2.26	0.51
1:C:362:GLN:O	1:C:366:MET:HG3	2.10	0.51
1:C:292:VAL:HG23	1:C:294:ILE:HD11	1.93	0.51
1:A:354:MET:CE	1:C:435:LEU:HB3	2.41	0.50
1:C:283:MET:HG3	1:C:340:TYR:CE1	2.45	0.50
1:D:424:PHE:HB3	1:D:425:PRO:HD2	1.92	0.50
1:B:310:GLU:HG2	1:B:314:MET:CE	2.41	0.50
1:B:269:LEU:HD23	1:B:294:ILE:CD1	2.40	0.50
1:C:493:ASP:O	1:C:497:GLN:HG3	2.10	0.50
1:B:269:LEU:HD22	1:B:282:TRP:HB2	1.92	0.50
1:B:304:PRO:O	1:B:308:LEU:HG	2.11	0.50
1:A:269:LEU:N	1:A:269:LEU:HD23	2.26	0.50
1:C:385:ARG:HG2	1:C:439:PHE:CD2	2.47	0.50
1:A:323:VAL:HG21	1:A:393:LEU:HD12	1.94	0.50
2:D:1:IHH:N9	2:D:1:IHH:C17	2.68	0.50
1:B:261:GLU:OE2	1:B:329:VAL:HA	2.12	0.50
1:D:279:GLY:HA3	1:D:296:THR:O	2.12	0.50
1:A:308:LEU:O	1:A:312:GLN:HG2	2.12	0.50
1:B:485:PRO:O	1:B:486:GLU:HB2	2.13	0.49
1:D:323:VAL:HG21	1:D:393:LEU:HD12	1.94	0.49
1:B:383:VAL:CG2	1:B:411:ILE:HB	2.43	0.49
1:A:276:GLY:HA3	1:A:279:GLY:O	2.13	0.49
1:A:309:GLN:HA	1:A:312:GLN:HG2	1.95	0.49
1:C:500:ARG:HD3	1:C:505:GLU:HG3	1.95	0.49
1:D:382:TYR:CE1	1:D:410:LEU:HD13	2.48	0.48
1:D:485:PRO:O	1:D:486:GLU:HB2	2.13	0.48
1:A:304:PRO:HG2	1:A:305:GLU:H	1.77	0.48
1:C:360:LEU:HD22	1:C:364:VAL:HG23	1.96	0.48
1:C:470:GLU:O	1:C:474:GLN:HG2	2.14	0.48
1:C:310:GLU:O	1:C:314:MET:HG3	2.13	0.48
1:D:466:MET:HE2	1:D:471:VAL:HG22	1.95	0.48
1:A:384:HIS:O	1:A:385:ARG:HB2	2.13	0.48
1:D:361:PRO:HA	1:D:520:PHE:CE2	2.48	0.48
1:A:267:LEU:HD21	1:A:337:VAL:HG21	1.95	0.48
1:C:271:VAL:HG12	1:C:272:LYS:N	2.29	0.47
1:D:310:GLU:HB3	1:D:406:GLY:HA2	1.95	0.47
1:A:297:LEU:C	1:A:297:LEU:HD23	2.35	0.47
1:B:329:VAL:HB	1:B:335:TYR:HB2	1.96	0.47
1:A:362:GLN:O	1:A:366:MET:HG3	2.14	0.47

Continued on next page...

Continued from previous page...

Atom-1	Atom-2	Distance(Å)	Clash(Å)
1:D:470:GLU:O	1:D:474:GLN:HB2	2.14	0.47
1:C:310:GLU:HG3	1:C:406:GLY:N	2.30	0.47
1:B:500:ARG:HD3	1:B:505:GLU:HB3	1.97	0.47
1:D:473:ASP:O	1:D:477:ARG:HG3	2.14	0.47
1:C:304:PRO:O	1:C:307:PHE:HB3	2.15	0.47
1:C:407:LEU:HD13	1:C:424:PHE:CE2	2.50	0.47
1:A:269:LEU:HD22	1:A:294:ILE:HD12	1.97	0.46
1:B:405:PHE:HB3	1:B:408:ALA:HB3	1.97	0.46
1:C:278:PHE:O	1:C:297:LEU:HG	2.16	0.46
1:C:495:MET:O	1:C:498:CYS:HB2	2.16	0.46
1:C:269:LEU:HD23	1:C:269:LEU:N	2.29	0.46
1:C:272:LYS:O	1:C:273:LEU:HD23	2.15	0.46
1:C:424:PHE:HD1	1:C:424:PHE:H	1.61	0.46
1:A:354:MET:HE1	1:C:435:LEU:CB	2.44	0.46
1:A:463:TYR:N	1:A:464:PRO:HD3	2.30	0.45
1:C:309:GLN:HA	1:C:312:GLN:HG2	1.98	0.45
1:B:491:LEU:O	1:B:495:MET:HG3	2.16	0.45
1:B:407:LEU:HD13	1:B:424:PHE:CE1	2.51	0.45
1:A:336:ILE:HG23	1:A:336:ILE:O	2.15	0.45
1:C:293:ALA:C	1:C:294:ILE:HD12	2.37	0.45
1:C:320:GLU:O	1:C:401:LYS:HE2	2.16	0.45
1:A:489:GLU:HG2	3:A:181:HOH:O	2.16	0.45
1:D:451:LEU:HD23	1:D:451:LEU:O	2.17	0.45
1:A:356:LYS:HE3	1:A:357:TYR:CZ	2.52	0.45
1:A:424:PHE:O	1:A:426:ILE:N	2.49	0.45
1:C:361:PRO:HA	1:C:520:PHE:CE2	2.52	0.45
1:D:283:MET:HG3	1:D:340:TYR:CZ	2.52	0.45
1:A:388:ARG:NH1	1:A:390:ALA:HB3	2.32	0.45
1:B:359:ARG:HA	1:B:359:ARG:HD3	1.82	0.45
1:B:329:VAL:O	1:B:334:ILE:HG23	2.17	0.45
1:A:381:ASN:O	1:A:411:ILE:HG22	2.17	0.45
1:C:494:LEU:HD22	1:C:515:PHE:CE1	2.52	0.44
1:C:262:ILE:HG12	1:C:263:PRO:HD2	1.98	0.44
1:A:262:ILE:HB	1:A:263:PRO:HD2	1.99	0.44
1:B:393:LEU:HD11	2:B:1:IHH:C28	2.45	0.44
1:D:297:LEU:O	1:D:299:PRO:HD3	2.18	0.44
1:C:267:LEU:HD13	1:C:337:VAL:HG21	1.98	0.44
1:C:383:VAL:HG12	1:C:385:ARG:HG3	1.98	0.44
1:A:286:TRP:HB3	1:A:290:THR:OG1	2.18	0.44
2:B:1:IHH:H16	2:B:1:IHH:C29	2.48	0.44
2:C:1:IHH:H23	2:C:1:IHH:N9	2.33	0.44
1:D:297:LEU:HD22	1:D:307:PHE:CB	2.48	0.44

Continued on next page...

Continued from previous page...

Atom-1	Atom-2	Distance(Å)	Clash(Å)
1:B:286:TRP:HB3	1:B:290:THR:HG1	1.82	0.44
1:D:476:GLU:OE2	1:D:476:GLU:HA	2.16	0.44
1:A:278:PHE:N	1:A:278:PHE:CD1	2.86	0.44
1:A:310:GLU:HG3	1:A:405:PHE:CA	2.47	0.44
1:B:297:LEU:HD22	1:B:307:PHE:CG	2.53	0.43
1:B:262:ILE:HB	1:B:263:PRO:HD2	2.00	0.43
1:C:332:GLU:OE1	1:C:334:ILE:HD12	2.17	0.43
1:A:354:MET:HE2	1:C:436:TYR:CE1	2.53	0.43
1:C:347:LEU:O	1:C:351:LYS:HG2	2.17	0.43
1:B:264:ARG:HH12	1:B:333:PRO:HG2	1.83	0.43
1:C:498:CYS:O	1:C:506:ARG:HG2	2.18	0.43
1:A:477:ARG:HH11	1:A:477:ARG:HG3	1.83	0.43
1:A:529:PRO:HB3	3:A:82:HOH:O	2.19	0.43
1:A:500:ARG:HB3	1:A:505:GLU:HG3	2.00	0.43
1:D:262:ILE:HB	1:D:263:PRO:HD2	2.00	0.43
2:D:1:IHH:H23	2:D:1:IHH:N9	2.34	0.43
1:A:311:ALA:HB2	1:A:336:ILE:HD12	2.01	0.43
1:C:466:MET:CE	1:C:474:GLN:HG3	2.49	0.43
1:C:311:ALA:O	1:C:315:LYS:HG2	2.18	0.43
1:D:326:TYR:CE2	1:D:339:GLU:HA	2.54	0.43
1:A:502:ASP:O	1:A:505:GLU:HG2	2.19	0.43
1:B:466:MET:HE3	1:B:471:VAL:HA	1.96	0.43
1:B:310:GLU:HG2	1:B:314:MET:HE2	2.00	0.43
1:A:360:LEU:HD13	1:A:520:PHE:HZ	1.84	0.43
1:C:264:ARG:HH11	1:C:333:PRO:HD2	1.84	0.42
1:D:407:LEU:HD13	1:D:424:PHE:CE2	2.54	0.42
2:D:1:IHH:H16	2:D:1:IHH:C29	2.50	0.42
1:D:347:LEU:O	1:D:351:LYS:HG2	2.19	0.42
1:B:322:LEU:HG	1:B:405:PHE:HZ	1.85	0.42
1:B:277:CYS:O	1:B:279:GLY:N	2.52	0.42
1:B:384:HIS:O	1:B:385:ARG:HB2	2.19	0.42
1:A:310:GLU:HG3	1:A:405:PHE:HB2	2.01	0.42
1:A:332:GLU:HA	1:A:334:ILE:N	2.35	0.42
1:A:500:ARG:CB	1:A:505:GLU:HG3	2.50	0.42
1:D:502:ASP:HB3	1:D:505:GLU:HG2	2.02	0.42
1:A:477:ARG:O	1:A:477:ARG:HG2	2.20	0.42
1:A:309:GLN:NE2	1:A:312:GLN:HG3	2.35	0.42
1:D:498:CYS:O	1:D:506:ARG:HG2	2.20	0.42
1:D:334:ILE:HG22	1:D:335:TYR:N	2.35	0.42
1:A:273:LEU:CD1	1:A:283:MET:HB2	2.49	0.42
1:C:279:GLY:HA3	1:C:296:THR:O	2.19	0.42
1:D:383:VAL:O	1:D:408:ALA:HA	2.20	0.42

Continued on next page...

Continued from previous page...

Atom-1	Atom-2	Distance(Å)	Clash(Å)
1:B:361:PRO:HA	1:B:520:PHE:CE2	2.55	0.42
2:A:1:IHH:N9	2:A:1:IHH:H23	2.34	0.41
1:A:308:LEU:HD21	1:A:334:ILE:CG2	2.50	0.41
1:B:446:TRP:CD1	1:B:446:TRP:C	2.94	0.41
1:B:275:GLN:NE2	1:B:275:GLN:HA	2.35	0.41
1:B:407:LEU:HD13	1:B:424:PHE:HE1	1.85	0.41
2:C:1:IHH:C23	2:C:1:IHH:N9	2.83	0.41
1:B:349:PHE:CZ	1:B:354:MET:HG3	2.56	0.41
1:B:343:LYS:HB2	1:B:394:VAL:HB	2.03	0.41
1:C:266:SER:HB2	1:C:287:ASN:OD1	2.21	0.41
1:D:260:TRP:NE1	1:D:315:LYS:HG2	2.35	0.41
1:A:318:ARG:HH11	1:A:318:ARG:CG	2.33	0.41
1:B:281:VAL:HG22	1:B:295:LYS:HG2	2.02	0.41
1:B:411:ILE:HD11	1:B:440:THR:HG22	2.01	0.41
1:D:260:TRP:CD1	1:D:315:LYS:HE3	2.55	0.41
1:D:491:LEU:HA	1:D:491:LEU:HD23	1.94	0.41
1:D:384:HIS:O	1:D:385:ARG:HB2	2.20	0.41
1:D:466:MET:HE3	1:D:471:VAL:HA	2.03	0.41
1:A:332:GLU:HA	1:A:334:ILE:HD12	2.03	0.41
1:A:411:ILE:O	1:A:411:ILE:HG23	2.21	0.41
1:C:255:LEU:HD11	1:C:331:GLU:OE2	2.20	0.41
1:C:272:LYS:HE2	1:C:275:GLN:OE1	2.20	0.41
1:D:351:LYS:HE3	3:D:176:HOH:O	2.20	0.41
1:A:355:GLY:O	1:A:458:LYS:HE2	2.20	0.41
1:C:343:LYS:HE3	1:C:396:GLU:OE1	2.21	0.41
1:C:309:GLN:HA	1:C:312:GLN:CG	2.51	0.40
1:D:531:GLU:HA	1:D:531:GLU:OE2	2.22	0.40
1:C:368:ALA:HB1	1:C:517:GLU:HG2	2.03	0.40
1:D:363:LEU:HD23	1:D:366:MET:CE	2.51	0.40
1:B:275:GLN:CA	1:B:275:GLN:HE21	2.35	0.40
1:B:283:MET:HE2	1:B:291:ARG:HD3	2.04	0.40
1:A:334:ILE:H	1:A:334:ILE:CD1	2.32	0.40
1:B:528:GLN:HA	1:B:529:PRO:HD3	1.98	0.40
1:B:269:LEU:CD2	1:B:294:ILE:HD12	2.45	0.40

There are no symmetry-related clashes.

5.3 Torsion angles

5.3.1 Protein backbone ⓘ

In the following table, the Percentiles column shows the percent Ramachandran outliers of the chain as a percentile score with respect to all X-ray entries followed by that with respect to entries of similar resolution. The Analysed column shows the number of residues for which the backbone conformation was analysed, and the total number of residues.

Mol	Chain	Analysed	Favoured	Allowed	Outliers	Percentiles	
1	A	258/286 (90%)	240 (93%)	15 (6%)	3 (1%)	19	19
1	B	261/286 (91%)	246 (94%)	14 (5%)	1 (0%)	43	52
1	C	259/286 (91%)	245 (95%)	11 (4%)	3 (1%)	19	19
1	D	263/286 (92%)	254 (97%)	9 (3%)	0	100	100
All	All	1041/1144 (91%)	985 (95%)	49 (5%)	7 (1%)	30	34

All (7) Ramachandran outliers are listed below:

Mol	Chain	Res	Type
1	C	404	ASP
1	A	336	ILE
1	A	425	PRO
1	A	404	ASP
1	C	411	ILE
1	C	425	PRO
1	B	425	PRO

5.3.2 Protein sidechains ⓘ

In the following table, the Percentiles column shows the percent sidechain outliers of the chain as a percentile score with respect to all X-ray entries followed by that with respect to entries of similar resolution. The Analysed column shows the number of residues for which the sidechain conformation was analysed, and the total number of residues.

Mol	Chain	Analysed	Rotameric	Outliers	Percentiles	
1	A	227/245 (93%)	217 (96%)	10 (4%)	39	50
1	B	228/245 (93%)	220 (96%)	8 (4%)	48	63
1	C	228/245 (93%)	217 (95%)	11 (5%)	35	45
1	D	229/245 (94%)	218 (95%)	11 (5%)	35	45
All	All	912/980 (93%)	872 (96%)	40 (4%)	39	50

All (40) residues with a non-rotameric sidechain are listed below:

Mol	Chain	Res	Type
1	A	264	ARG
1	A	269	LEU
1	A	271	VAL
1	A	318	ARG
1	A	351	LYS
1	A	356	LYS
1	A	360	LEU
1	A	426	ILE
1	A	491	LEU
1	A	526	GLN
1	B	255	LEU
1	B	283	MET
1	B	351	LYS
1	B	354	MET
1	B	360	LEU
1	B	438	ARG
1	B	491	LEU
1	B	505	GLU
1	C	267	LEU
1	C	275	GLN
1	C	283	MET
1	C	307	PHE
1	C	318	ARG
1	C	334	ILE
1	C	351	LYS
1	C	360	LEU
1	C	396	GLU
1	C	491	LEU
1	C	526	GLN
1	D	277	CYS
1	D	283	MET
1	D	343	LYS
1	D	351	LYS
1	D	360	LEU
1	D	388	ARG
1	D	438	ARG
1	D	469	ARG
1	D	491	LEU
1	D	502	ASP
1	D	504	GLU

Some sidechains can be flipped to improve hydrogen bonding and reduce clashes. All (3) such

sidechains are listed below:

Mol	Chain	Res	Type
1	A	309	GLN
1	C	309	GLN
1	C	381	ASN

5.3.3 RNA ⓘ

There are no RNA chains in this entry.

5.4 Non-standard residues in protein, DNA, RNA chains ⓘ

There are no non-standard protein/DNA/RNA residues in this entry.

5.5 Carbohydrates ⓘ

There are no carbohydrates in this entry.

5.6 Ligand geometry ⓘ

4 ligands are modelled in this entry.

In the following table, the Counts columns list the number of bonds (or angles) for which Mogul statistics could be retrieved, the number of bonds (or angles) that are observed in the model and the number of bonds (or angles) that are defined in the chemical component dictionary. The Link column lists molecule types, if any, to which the group is linked. The Z score for a bond length (or angle) is the number of standard deviations the observed value is removed from the expected value. A bond length (or angle) with $|Z| > 2$ is considered an outlier worth inspection. RMSZ is the root-mean-square of all Z scores of the bond lengths (or angles).

Mol	Type	Chain	Res	Link	Bond lengths			Bond angles		
					Counts	RMSZ	# $ Z > 2$	Counts	RMSZ	# $ Z > 2$
2	IHH	A	1	-	33,33,33	2.01	5 (15%)	45,46,46	2.36	12 (26%)
2	IHH	B	1	-	33,33,33	2.05	5 (15%)	45,46,46	2.30	12 (26%)
2	IHH	C	1	-	33,33,33	2.01	6 (18%)	45,46,46	2.36	15 (33%)
2	IHH	D	1	-	33,33,33	2.04	5 (15%)	45,46,46	2.28	13 (28%)

In the following table, the Chirals column lists the number of chiral outliers, the number of chiral centers analysed, the number of these observed in the model and the number defined in the chemical component dictionary. Similar counts are reported in the Torsion and Rings columns. '-' means no outliers of that kind were identified.

Mol	Type	Chain	Res	Link	Chirals	Torsions	Rings
2	IHH	A	1	-	-	0/13/17/17	0/2/5/5
2	IHH	B	1	-	-	0/13/17/17	0/2/5/5
2	IHH	C	1	-	-	0/13/17/17	0/2/5/5
2	IHH	D	1	-	-	0/13/17/17	0/2/5/5

All (21) bond length outliers are listed below:

Mol	Chain	Res	Type	Atoms	Z	Observed(Å)	Ideal(Å)
2	B	1	IHH	N25-N26	-8.01	1.23	1.37
2	D	1	IHH	N25-N26	-8.00	1.23	1.37
2	A	1	IHH	N25-N26	-7.94	1.23	1.37
2	C	1	IHH	N25-N26	-7.87	1.23	1.37
2	B	1	IHH	C10-C5	-4.63	1.39	1.45
2	D	1	IHH	C10-C5	-4.61	1.39	1.45
2	C	1	IHH	C10-C5	-4.37	1.39	1.45
2	A	1	IHH	C10-C5	-4.36	1.39	1.45
2	B	1	IHH	C12-N11	-3.45	1.33	1.40
2	C	1	IHH	C12-N11	-3.45	1.33	1.40
2	A	1	IHH	C12-N11	-3.43	1.33	1.40
2	D	1	IHH	C12-N11	-3.36	1.33	1.40
2	D	1	IHH	C22-N21	-3.18	1.33	1.38
2	B	1	IHH	C22-N21	-3.07	1.33	1.38
2	A	1	IHH	C22-N21	-2.93	1.33	1.38
2	C	1	IHH	C22-N21	-2.92	1.33	1.38
2	B	1	IHH	C5-C6	-2.07	1.39	1.42
2	D	1	IHH	C5-C6	-2.06	1.39	1.42
2	C	1	IHH	C6-N7	-2.05	1.33	1.37
2	A	1	IHH	C5-C6	-2.04	1.39	1.42
2	C	1	IHH	C5-C6	-2.02	1.39	1.42

All (52) bond angle outliers are listed below:

Mol	Chain	Res	Type	Atoms	Z	Observed(°)	Ideal(°)
2	A	1	IHH	C22-N26-N25	8.26	109.19	104.36
2	B	1	IHH	C22-N26-N25	8.21	109.17	104.36
2	C	1	IHH	C22-N26-N25	8.08	109.09	104.36
2	D	1	IHH	C22-N26-N25	7.93	109.00	104.36
2	A	1	IHH	C10-C5-C6	6.84	119.53	115.63
2	B	1	IHH	C10-C5-C6	6.83	119.52	115.63
2	C	1	IHH	C10-C5-C6	6.62	119.40	115.63
2	D	1	IHH	C10-C5-C6	6.48	119.32	115.63
2	C	1	IHH	C28-C27-C24	-4.56	114.91	119.93
2	A	1	IHH	C28-C27-C24	-4.39	115.09	119.93

Continued on next page...

Continued from previous page...

Mol	Chain	Res	Type	Atoms	Z	Observed(°)	Ideal(°)
2	B	1	IHH	C5-C6-N7	-4.32	118.88	122.86
2	C	1	IHH	C5-C6-N7	-4.21	118.98	122.86
2	D	1	IHH	C5-C6-N7	-4.16	119.03	122.86
2	A	1	IHH	C5-C6-N7	-4.08	119.10	122.86
2	B	1	IHH	C28-C27-C24	-3.78	115.76	119.93
2	C	1	IHH	C29-C27-C24	-3.68	115.87	119.93
2	D	1	IHH	C28-C27-C24	-3.64	115.92	119.93
2	A	1	IHH	C29-C27-C24	-3.57	116.00	119.93
2	D	1	IHH	N7-C8-N9	-3.49	120.81	126.19
2	D	1	IHH	C29-C27-C24	-3.39	116.20	119.93
2	A	1	IHH	N7-C8-N9	-3.35	121.02	126.19
2	C	1	IHH	N7-C8-N9	-3.32	121.06	126.19
2	B	1	IHH	C29-C27-C24	-3.27	116.33	119.93
2	B	1	IHH	N7-C8-N9	-3.25	121.17	126.19
2	D	1	IHH	C5-C10-N21	-3.04	116.99	119.62
2	C	1	IHH	C23-C24-C27	-2.81	125.69	129.06
2	D	1	IHH	N21-C10-N9	2.78	123.96	119.09
2	C	1	IHH	N11-C8-N9	2.78	125.17	116.97
2	A	1	IHH	C23-C24-C27	-2.75	125.75	129.06
2	A	1	IHH	C27-C24-N25	2.72	124.45	121.54
2	B	1	IHH	C5-C10-N21	-2.71	117.28	119.62
2	C	1	IHH	C23-C24-N25	2.69	110.02	106.05
2	B	1	IHH	N21-C10-N9	2.65	123.73	119.09
2	B	1	IHH	C23-C24-N25	2.61	109.90	106.05
2	A	1	IHH	N11-C8-N9	2.59	124.62	116.97
2	D	1	IHH	C23-C24-N25	2.59	109.88	106.05
2	C	1	IHH	C27-C24-N25	2.55	124.27	121.54
2	A	1	IHH	C23-C24-N25	2.52	109.78	106.05
2	A	1	IHH	N21-C10-N9	2.45	123.38	119.09
2	C	1	IHH	N21-C10-N9	2.31	123.12	119.09
2	D	1	IHH	C23-C24-C27	-2.30	126.30	129.06
2	D	1	IHH	N11-C8-N9	2.29	123.74	116.97
2	B	1	IHH	N11-C8-N9	2.17	123.38	116.97
2	C	1	IHH	C5-C10-N21	-2.16	117.75	119.62
2	C	1	IHH	C24-N25-N26	-2.13	108.24	111.16
2	C	1	IHH	C24-C23-C22	-2.09	103.16	105.86
2	B	1	IHH	C24-N25-N26	-2.07	108.32	111.16
2	D	1	IHH	C27-C24-N25	2.06	123.74	121.54
2	A	1	IHH	C24-N25-N26	-2.04	108.36	111.16
2	C	1	IHH	C3-C6-C5	2.04	121.49	119.08
2	D	1	IHH	C24-C23-C22	-2.03	103.23	105.86
2	B	1	IHH	C24-C23-C22	-2.01	103.26	105.86

There are no chirality outliers.

There are no torsion outliers.

There are no ring outliers.

5.7 Other polymers ⓘ

There are no such residues in this entry.

5.8 Polymer linkage issues

There are no chain breaks in this entry.

6 Fit of model and data ⓘ

6.1 Protein, DNA and RNA chains ⓘ

In the following table, the column labelled ‘#RSRZ> 2’ contains the number (and percentage) of RSRZ outliers, followed by percent RSRZ outliers for the chain as percentile scores relative to all X-ray entries and entries of similar resolution. The OWAB column contains the minimum, median, 95th percentile and maximum values of the occupancy-weighted average B-factor per residue. The column labelled ‘Q< 0.9’ lists the number of (and percentage) of residues with an average occupancy less than 0.9.

Mol	Chain	Analysed	<RSRZ>	#RSRZ>2	OWAB(Å ²)	Q<0.9
1	A	264/286 (92%)	0.68	37 (14%) 3 4	12, 30, 76, 98	0
1	B	267/286 (93%)	0.49	26 (9%) 8 10	11, 31, 75, 86	0
1	C	265/286 (92%)	0.73	36 (13%) 4 4	12, 31, 78, 90	0
1	D	267/286 (93%)	0.63	28 (10%) 7 8	12, 32, 75, 84	0
All	All	1063/1144 (92%)	0.63	127 (11%) 5 6	11, 31, 77, 98	0

All (127) RSRZ outliers are listed below:

Mol	Chain	Res	Type	RSRZ
1	C	299	PRO	11.6
1	D	412	GLU	9.6
1	D	300	GLY	9.1
1	B	300	GLY	8.9
1	D	277	CYS	8.0
1	D	278	PHE	7.7
1	B	255	LEU	7.5
1	C	411	ILE	7.3
1	C	298	LYS	6.9
1	D	299	PRO	6.8
1	B	256	ALA	6.5
1	A	304	PRO	6.4
1	A	411	ILE	6.3
1	D	301	THR	6.3
1	B	301	THR	6.2
1	B	299	PRO	5.9
1	A	412	GLU	5.9
1	C	412	GLU	5.8
1	C	267	LEU	5.7
1	D	411	ILE	5.5
1	C	297	LEU	5.4

Continued on next page...

Continued from previous page...

Mol	Chain	Res	Type	RSRZ
1	A	271	VAL	5.4
1	D	354	MET	4.7
1	A	333	PRO	4.7
1	A	269	LEU	4.6
1	C	424	PHE	4.5
1	A	278	PHE	4.4
1	A	334	ILE	4.4
1	D	306	ALA	4.4
1	D	297	LEU	4.3
1	B	277	CYS	4.2
1	C	334	ILE	4.2
1	D	472	LEU	4.2
1	C	271	VAL	4.1
1	C	477	ARG	4.1
1	B	297	LEU	4.0
1	A	297	LEU	3.9
1	A	305	GLU	3.9
1	D	279	GLY	3.9
1	C	255	LEU	3.8
1	C	409	ARG	3.8
1	D	304	PRO	3.7
1	B	409	ARG	3.7
1	A	410	LEU	3.6
1	A	477	ARG	3.6
1	C	331	GLU	3.6
1	C	332	GLU	3.6
1	C	308	LEU	3.6
1	C	278	PHE	3.5
1	B	423	LYS	3.5
1	A	303	SER	3.4
1	B	411	ILE	3.4
1	D	473	ASP	3.4
1	A	256	ALA	3.4
1	A	288	GLY	3.3
1	B	302	MET	3.3
1	A	267	LEU	3.3
1	C	410	LEU	3.3
1	D	307	PHE	3.3
1	D	424	PHE	3.2
1	A	307	PHE	3.2
1	B	307	PHE	3.2
1	B	309	GLN	3.2

Continued on next page...

Continued from previous page...

Mol	Chain	Res	Type	RSRZ
1	A	255	LEU	3.1
1	C	307	PHE	3.1
1	C	335	TYR	3.1
1	A	308	LEU	3.1
1	A	335	TYR	3.1
1	B	276	GLY	3.1
1	C	256	ALA	3.1
1	A	332	GLU	3.1
1	D	302	MET	3.1
1	B	304	PRO	3.1
1	D	268	ARG	3.1
1	A	287	ASN	3.0
1	B	424	PHE	3.0
1	D	258	ASP	3.0
1	D	309	GLN	3.0
1	B	469	ARG	2.9
1	A	409	ARG	2.9
1	A	423	LYS	2.9
1	A	268	ARG	2.9
1	C	288	GLY	2.9
1	A	289	THR	2.8
1	C	268	ARG	2.8
1	C	333	PRO	2.8
1	A	270	GLU	2.8
1	C	289	THR	2.8
1	D	408	ALA	2.7
1	D	423	LYS	2.7
1	B	298	LYS	2.7
1	B	305	GLU	2.7
1	C	275	GLN	2.7
1	A	331	GLU	2.7
1	C	287	ASN	2.7
1	C	277	CYS	2.6
1	C	273	LEU	2.6
1	B	303	SER	2.6
1	B	289	THR	2.6
1	C	282	TRP	2.5
1	B	410	LEU	2.5
1	D	410	LEU	2.5
1	D	305	GLU	2.5
1	C	306	ALA	2.5
1	A	286	TRP	2.5

Continued on next page...

Continued from previous page...

Mol	Chain	Res	Type	RSRZ
1	B	308	LEU	2.4
1	B	408	ALA	2.4
1	C	408	ALA	2.4
1	A	283	MET	2.3
1	A	277	CYS	2.3
1	C	528	GLN	2.3
1	A	282	TRP	2.3
1	C	285	THR	2.3
1	D	409	ARG	2.3
1	A	306	ALA	2.3
1	B	473	ASP	2.3
1	A	275	GLN	2.2
1	B	477	ARG	2.2
1	D	289	THR	2.1
1	A	291	ARG	2.1
1	D	477	ARG	2.1
1	A	311	ALA	2.1
1	D	465	GLY	2.1
1	C	296	THR	2.1
1	C	426	ILE	2.0
1	A	276	GLY	2.0
1	C	257	LYS	2.0

6.2 Non-standard residues in protein, DNA, RNA chains ⓘ

There are no non-standard protein/DNA/RNA residues in this entry.

6.3 Carbohydrates ⓘ

There are no carbohydrates in this entry.

6.4 Ligands ⓘ

In the following table, the Atoms column lists the number of modelled atoms in the group and the number defined in the chemical component dictionary. LLDF column lists the quality of electron density of the group with respect to its neighbouring residues in protein, DNA or RNA chains. The B-factors column lists the minimum, median, 95th percentile and maximum values of B factors of atoms in the group. The column labelled 'Q < 0.9' lists the number of atoms with occupancy less than 0.9.

Mol	Type	Chain	Res	Atoms	RSR	LLDF	B-factors(\AA^2)	Q<0.9
2	IHH	B	1	29/29	0.19	1.10	31,34,59,61	0
2	IHH	A	1	29/29	0.18	0.89	30,33,54,55	0
2	IHH	D	1	29/29	0.17	0.58	28,30,51,53	0
2	IHH	C	1	29/29	0.16	0.13	32,34,54,56	0

6.5 Other polymers

There are no such residues in this entry.