



Full wwPDB X-ray Structure Validation Report

Feb 28, 2014 – 12:46 AM GMT

PDB ID : 4F6R
Title : Tubulin:Stathmin-likedomain complex
Authors : Gigant, B.; Mignot, I.; Knossow, M.
Deposited on : 2012-05-15
Resolution : 2.64 Å(reported)

This is a full wwPDB validation report for a publicly released PDB entry.
We welcome your comments at validation@mail.wwpdb.org
A user guide is available at <http://wwpdb.org/ValidationPDFNotes.html>

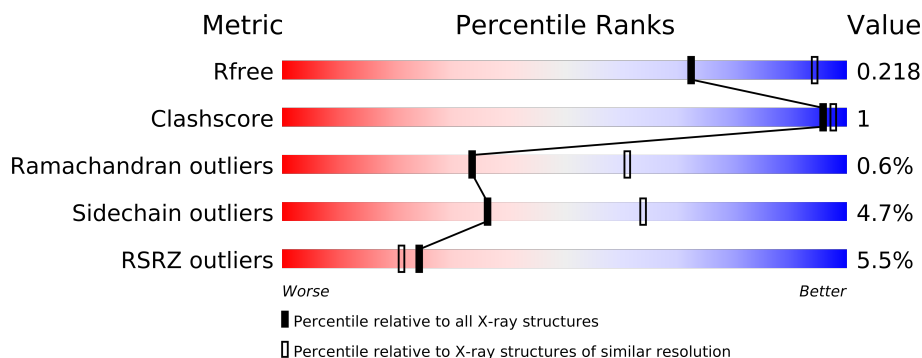
The following versions of software and data (see [references](#)) were used in the production of this report:

MolProbity : 4.02b-467
Mogul : 1.15 2013
Xtriage (Phenix) : dev-1323
EDS : stable22639
Percentile statistics : 21963
Refmac : 5.8.0049
CCP4 : 6.3.0 (Settle)
Ideal geometry (proteins) : Engh & Huber (2001)
Ideal geometry (DNA, RNA) : Parkinson et. al. (1996)
Validation Pipeline (wwPDB-VP) : stable22683

1 Overall quality at a glance

The reported resolution of this entry is 2.64 Å.

Percentile scores (ranging between 0-100) for global validation metrics of the entry are shown in the following graphic. The table shows the number of entries on which the scores are based.



Metric	Whole archive (#Entries)	Similar resolution (#Entries, resolution range(Å))
R_{free}	66092	2393 (2.68-2.60)
Clashscore	79885	2915 (2.68-2.60)
Ramachandran outliers	78287	2865 (2.68-2.60)
Sidechain outliers	78261	2865 (2.68-2.60)
RSRZ outliers	66119	2393 (2.68-2.60)

The table below summarises the geometric issues observed across the polymeric chains and their fit to the electron density. The red, orange, yellow and green segments on the lower bar indicate the fraction of residues that contain outliers for ≥ 3 , 2, 1 and 0 types of geometric quality criteria. The upper red bar (where present) indicates the fraction of residues that have poor fit to the electron density.

Mol	Chain	Length	Quality of chain
1	A	451	
2	B	445	
3	C	87	
4	D	169	

The following table lists non-polymeric compounds that are outliers for geometric or electron-density-fit criteria:

Mol	Type	Chain	Res	Geometry	Electron density
9	MES	B	502	-	X

2 Entry composition

There are 10 unique types of molecules in this entry. The entry contains 8626 atoms, of which 0 are hydrogen and 0 are deuterium.

In the tables below, the ZeroOcc column contains the number of atoms modelled with zero occupancy, the AltConf column contains the number of residues with at least one atom in alternate conformation and the Trace column contains the number of residues modelled with at most 2 atoms.

- Molecule 1 is a protein called Tubulin alpha chain.

Mol	Chain	Residues	Atoms					ZeroOcc	AltConf	Trace
1	A	437	Total	C	N	O	S	0	0	0
			3396	2150	579	645	22			

There are 2 discrepancies between the modelled and reference sequences:

Chain	Residue	Modelled	Actual	Comment	Reference
A	232	SER	GLY	SEE REMARK 999	UNP D0VWZ0
A	340	SER	THR	SEE REMARK 999	UNP D0VWZ0

- Molecule 2 is a protein called Tubulin beta chain.

Mol	Chain	Residues	Atoms					ZeroOcc	AltConf	Trace
2	B	431	Total	C	N	O	S	0	0	0
			3378	2117	578	657	26			

There are 4 discrepancies between the modelled and reference sequences:

Chain	Residue	Modelled	Actual	Comment	Reference
B	317	THR	ALA	SEE REMARK 999	UNP D0VWY9
B	318	ILE	VAL	SEE REMARK 999	UNP D0VWY9
B	335	ILE	VAL	SEE REMARK 999	UNP D0VWY9
B	375	SER	ALA	SEE REMARK 999	UNP D0VWY9

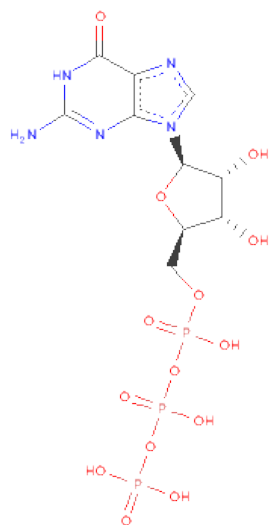
- Molecule 3 is a protein called Stathmin-like domain R1.

Mol	Chain	Residues	Atoms					ZeroOcc	AltConf	Trace
3	C	64	Total	C	N	O	S	0	0	0
			487	304	93	89	1			

- Molecule 4 is a protein called Designed ankyrin repeat protein (DARPIN) D2.

Mol	Chain	Residues	Atoms					ZeroOcc	AltConf	Trace
4	D	159	Total	C	N	O	S	0	0	0
			1185	743	202	238	2			

- Molecule 5 is GUANOSINE-5'-TRIPHOSPHATE (three-letter code: GTP) (formula: $C_{10}H_{16}N_5O_{14}P_3$).



Mol	Chain	Residues	Atoms					ZeroOcc	AltConf
5	A	1	Total	C	N	O	P	0	0
			32	10	5	14	3		

- Molecule 6 is MAGNESIUM ION (three-letter code: MG) (formula: Mg).

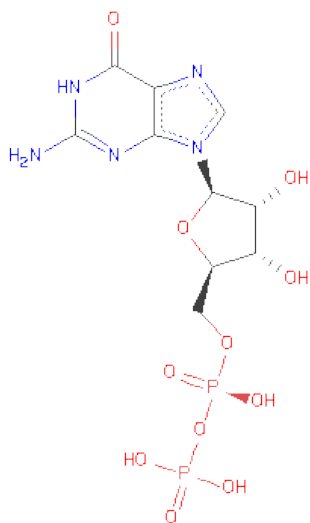
Mol	Chain	Residues	Atoms		ZeroOcc	AltConf
6	A	1	Total	Mg	0	0
			1	1		

- Molecule 7 is SULFATE ION (three-letter code: SO4) (formula: O_4S).



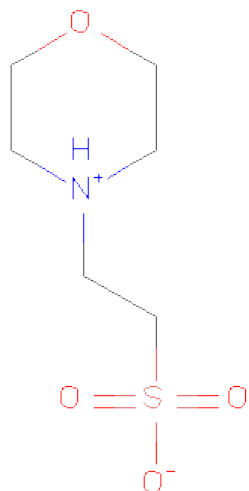
Mol	Chain	Residues	Atoms			ZeroOcc	AltConf
7	A	1	Total	O	S	0	0
			5	4	1		

- Molecule 8 is GUANOSINE-5'-DIPHOSPHATE (three-letter code: GDP) (formula: $C_{10}H_{15}N_5O_{11}P_2$).



Mol	Chain	Residues	Atoms				ZeroOcc	AltConf
8	B	1	Total	C	N	O	P	
			28	10	5	11	2	0

- Molecule 9 is 2-(N-MORPHOLINO)-ETHANESULFONICACID (three-letter code: MES) (formula: $C_6H_{13}NO_4S$).



Mol	Chain	Residues	Atoms					ZeroOcc	AltConf
9	B	1	Total	C	N	O	S	0	0
			12	6	1	4	1		

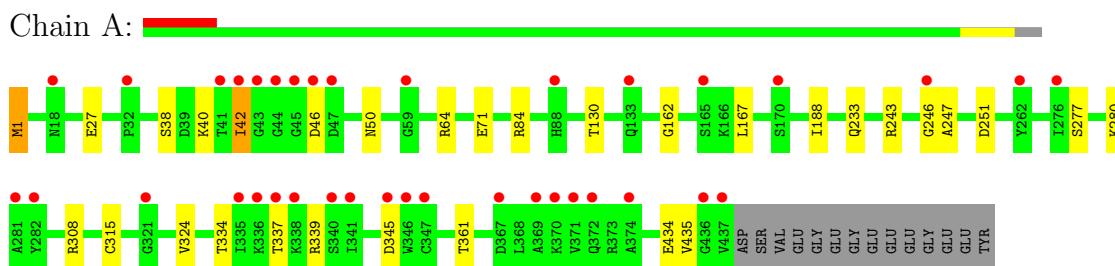
- Molecule 10 is water.

Mol	Chain	Residues	Atoms		ZeroOcc	AltConf
10	A	39	Total	O	0	0
			39	39		
10	B	43	Total	O	0	0
			43	43		
10	C	3	Total	O	0	0
			3	3		
10	D	17	Total	O	0	0
			17	17		

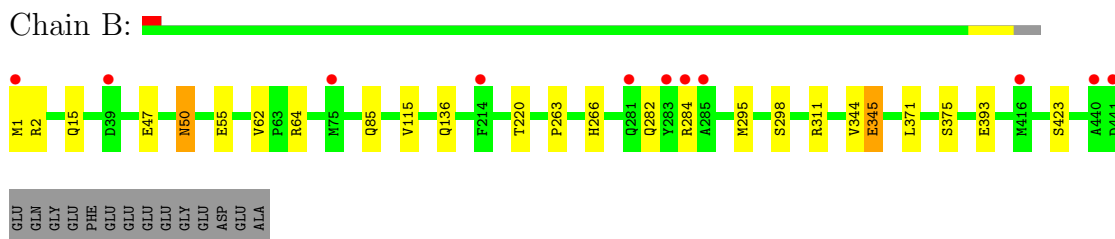
3 Residue-property plots

These plots are drawn for all protein, RNA and DNA chains in the entry. The first graphic for a chain summarises the proportions of errors displayed in the second graphic. The second graphic shows the sequence view annotated by issues in geometry and electron density. Residues are color-coded according to the number of geometric quality criteria for which they contain at least one outlier: green = 0, yellow = 1, orange = 2 and red = 3 or more. A red dot above a residue indicates a poor fit to the electron density ($RSRZ > 2$). Stretches of 2 or more consecutive residues without any outlier are shown as a green connector. Residues present in the sample, but not in the model, are shown in grey.

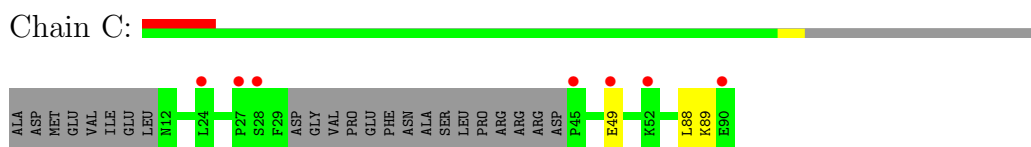
- Molecule 1: Tubulin alpha chain



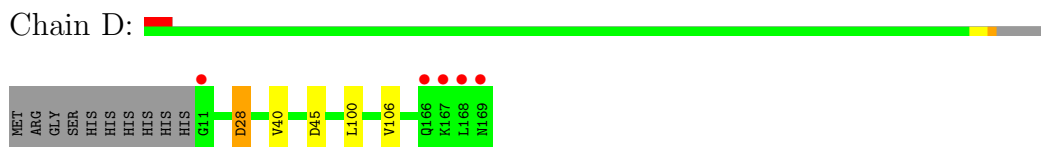
- Molecule 2: Tubulin beta chain



- Molecule 3: Stathmin-like domain R1



- Molecule 4: Designed ankyrin repeat protein (DARPIN) D2



4 Data and refinement statistics

Property	Value	Source
Space group	C 1 2 1	Depositor
Cell constants a, b, c, α , β , γ	95.06Å 75.57Å 155.68Å 90.00° 96.29° 90.00°	Depositor
Resolution (Å)	45.45 – 2.64 45.45 – 2.64	Depositor EDS
% Data completeness (in resolution range)	98.6 (45.45-2.64) 98.3 (45.45-2.64)	Depositor EDS
R_{merge}	(Not available)	Depositor
R_{sym}	0.09	Depositor
$\langle I/\sigma(I) \rangle$ ¹	2.03 (at 2.65Å)	Xtriage
Refinement program	BUSTER 2.10.0	Depositor
R, R_{free}	0.177 , 0.201 0.184 , 0.218	Depositor DCC
R_{free} test set	1614 reflections (5.31%)	DCC
Wilson B-factor (Å ²)	53.2	Xtriage
Anisotropy	0.352	Xtriage
Bulk solvent k_{sol} (e/Å ³), B_{sol} (Å ²)	0.35 , 46.0	EDS
Estimated twinning fraction	No twinning to report.	Xtriage
L-test for twinning	$\langle L \rangle = 0.49$, $\langle L^2 \rangle = 0.33$	Xtriage
Outliers	1 of 32035 reflections (0.003%)	Xtriage
F_o, F_c correlation	0.95	EDS
Total number of atoms	8626	wwPDB-VP
Average B, all atoms (Å ²)	60.0	wwPDB-VP

Xtriage's analysis on translational NCS is as follows: *The largest off-origin peak in the Patterson function is 5.73% of the height of the origin peak. No significant pseudotranslation is detected.*

¹Intensities estimated from amplitudes.

5 Model quality

5.1 Standard geometry

Bond lengths and bond angles in the following residue types are not validated in this section: GDP, GTP, MG, SO4, MES

The Z score for a bond length (or angle) is the number of standard deviations the observed value is removed from the expected value. A bond length (or angle) with $|Z| > 5$ is considered an outlier worth inspection. RMSZ is the root-mean-square of all Z scores of the bond lengths (or angles).

Mol	Chain	Bond lengths		Bond angles	
		RMSZ	# $ Z > 5$	RMSZ	# $ Z > 5$
1	A	0.48	0/3472	0.73	0/4714
2	B	0.50	0/3452	0.72	0/4677
3	C	0.52	0/493	0.71	0/660
4	D	0.54	0/1200	0.74	0/1626
All	All	0.50	0/8617	0.72	0/11677

There are no bond length outliers.

There are no bond angle outliers.

There are no chirality outliers.

There are no planarity outliers.

5.2 Close contacts

In the following table, the Non-H and H(model) columns list the number of non-hydrogen atoms and hydrogen atoms in the chain respectively. The H(added) column lists the number of hydrogens added by MolProbity. The Clashes column lists the number of clashes within the asymmetric unit, and the number in parentheses is this value normalized per 1000 atoms of the molecule in the chain. The Symm-Clashes column gives symmetry related clashes, in the same way as for the Clashes column.

Mol	Chain	Non-H	H(model)	H(added)	Clashes	Symm-Clashes
1	A	3396	0	0	5	1
2	B	3378	0	0	4	0
3	C	487	0	0	0	0
4	D	1185	0	0	1	0
5	A	32	0	0	0	0
6	A	1	0	0	0	0
7	A	5	0	0	0	0
8	B	28	0	0	0	0

Continued on next page...

Continued from previous page...

Mol	Chain	Non-H	H(model)	H(added)	Clashes	Symm-Clashes
9	B	12	0	13	0	0
10	A	39	0	0	0	0
10	B	43	0	0	0	0
10	C	3	0	0	0	0
10	D	17	0	0	0	0
All	All	8626	0	13	10	1

Clashscore is defined as the number of clashes calculated for the entry per 1000 atoms (including hydrogens) of the entry. The overall clashscore for this entry is 1.

All (10) close contacts within the same asymmetric unit are listed below.

Atom-1	Atom-2	Distance(Å)	Clash(Å)
1:A:50:ASN:O	1:A:64:ARG:NH1	2.27	0.68
1:A:1:MET:N	1:A:130:THR:OG1	2.29	0.65
2:B:50:ASN:O	2:B:64:ARG:NH2	2.31	0.63
1:A:27:GLU:OE1	1:A:243:ARG:NH2	2.37	0.57
2:B:311:ARG:NH1	2:B:345:GLU:OE1	2.40	0.55
4:D:28:ASP:N	4:D:28:ASP:OD1	2.45	0.49
2:B:263:PRO:O	2:B:266:HIS:CD2	2.66	0.48
1:A:233:GLN:NE2	1:A:361:THR:O	2.48	0.46
1:A:334:THR:O	1:A:337:THR:OG1	2.33	0.45
2:B:295:MET:SD	2:B:375:SER:OG	2.74	0.45

All (1) symmetry-related close contacts are listed below. The label for Atom-2 includes the symmetry operator and encoded unit-cell translations to be applied.

Atom-1	Atom-2	Distance(Å)	Clash(Å)
1:A:251:ASP:OD2	1:A:251:ASP:OD2[2.656]	2.11	0.09

5.3 Torsion angles

5.3.1 Protein backbone ⓘ

In the following table, the Percentiles column shows the percent Ramachandran outliers of the chain as a percentile score with respect to all X-ray entries followed by that with respect to entries of similar resolution. The Analysed column shows the number of residues for which the backbone conformation was analysed, and the total number of residues.

Mol	Chain	Analysed	Favoured	Allowed	Outliers	Percentiles
1	A	435/451 (96%)	415 (95%)	16 (4%)	4 (1%)	25 47

Continued on next page...

Continued from previous page...

Mol	Chain	Analysed	Favoured	Allowed	Outliers	Percentiles	
2	B	429/445 (96%)	418 (97%)	8 (2%)	3 (1%)	30	56
3	C	60/87 (69%)	59 (98%)	1 (2%)	0	100	100
4	D	157/169 (93%)	154 (98%)	3 (2%)	0	100	100
All	All	1081/1152 (94%)	1046 (97%)	28 (3%)	7 (1%)	33	61

All (7) Ramachandran outliers are listed below:

Mol	Chain	Res	Type
1	A	42	ILE
1	A	162	GLY
2	B	2	ARG
2	B	284	ARG
1	A	246	GLY
1	A	247	ALA
2	B	282	GLN

5.3.2 Protein sidechains ⓘ

In the following table, the Percentiles column shows the percent sidechain outliers of the chain as a percentile score with respect to all X-ray entries followed by that with respect to entries of similar resolution. The Analysed column shows the number of residues for which the sidechain conformation was analysed, and the total number of residues.

Mol	Chain	Analysed	Rotameric	Outliers	Percentiles	
1	A	364/379 (96%)	346 (95%)	18 (5%)	35	61
2	B	371/385 (96%)	355 (96%)	16 (4%)	40	68
3	C	46/76 (60%)	43 (94%)	3 (6%)	24	45
4	D	121/131 (92%)	116 (96%)	5 (4%)	41	71
All	All	902/971 (93%)	860 (95%)	42 (5%)	36	64

All (42) residues with a non-rotameric sidechain are listed below:

Mol	Chain	Res	Type
1	A	1	MET
1	A	38	SER
1	A	40	LYS
1	A	42	ILE
1	A	46	ASP

Continued on next page...

Continued from previous page...

Mol	Chain	Res	Type
1	A	71	GLU
1	A	84	ARG
1	A	167	LEU
1	A	188	ILE
1	A	277	SER
1	A	280	LYS
1	A	308	ARG
1	A	315	CYS
1	A	324	VAL
1	A	339	ARG
1	A	345	ASP
1	A	434	GLU
1	A	435	VAL
2	B	1	MET
2	B	15	GLN
2	B	47	GLU
2	B	50	ASN
2	B	55	GLU
2	B	62	VAL
2	B	85	GLN
2	B	115	VAL
2	B	136	GLN
2	B	220	THR
2	B	298	SER
2	B	344	VAL
2	B	345	GLU
2	B	371	LEU
2	B	393	GLU
2	B	423	SER
3	C	49	GLU
3	C	88	LEU
3	C	89	LYS
4	D	28	ASP
4	D	40	VAL
4	D	45	ASP
4	D	100	LEU
4	D	106	VAL

Some sidechains can be flipped to improve hydrogen bonding and reduce clashes. There are no such sidechains identified.

5.3.3 RNA ⓘ

There are no RNA chains in this entry.

5.4 Non-standard residues in protein, DNA, RNA chains ⓘ

There are no non-standard protein/DNA/RNA residues in this entry.

5.5 Carbohydrates ⓘ

There are no carbohydrates in this entry.

5.6 Ligand geometry ⓘ

Of 5 ligands modelled in this entry, 1 is monoatomic - leaving 4 for Mogul analysis.

In the following table, the Counts columns list the number of bonds (or angles) for which Mogul statistics could be retrieved, the number of bonds (or angles) that are observed in the model and the number of bonds (or angles) that are defined in the chemical component dictionary. The Link column lists molecule types, if any, to which the group is linked. The Z score for a bond length (or angle) is the number of standard deviations the observed value is removed from the expected value. A bond length (or angle) with $|Z| > 2$ is considered an outlier worth inspection. RMSZ is the root-mean-square of all Z scores of the bond lengths (or angles).

Mol	Type	Chain	Res	Link	Bond lengths			Bond angles		
					Counts	RMSZ	$\# Z > 2$	Counts	RMSZ	$\# Z > 2$
5	GTP	A	501	6	34,34,34	1.51	3 (8%)	51,54,54	2.47	3 (5%)
7	SO4	A	503	-	4,4,4	0.07	0	6,6,6	0.12	0
8	GDP	B	501	-	30,30,30	0.86	1 (3%)	44,47,47	2.96	2 (4%)
9	MES	B	502	-	12,12,12	0.22	0	16,16,16	0.40	0

In the following table, the Chirals column lists the number of chiral outliers, the number of chiral centers analysed, the number of these observed in the model and the number defined in the chemical component dictionary. Similar counts are reported in the Torsion and Rings columns. '-' means no outliers of that kind were identified.

Mol	Type	Chain	Res	Link	Chirals	Torsions	Rings
5	GTP	A	501	6	-	0/22/38/38	0/1/3/3
7	SO4	A	503	-	-	0/0/0/0	0/0/0/0
8	GDP	B	501	-	-	0/16/32/32	0/1/3/3
9	MES	B	502	-	-	0/6/14/14	0/1/1/1

All (4) bond length outliers are listed below:

Mol	Chain	Res	Type	Atoms	Z	Observed(Å)	Ideal(Å)
5	A	501	GTP	PA-O3A	-5.29	1.50	1.59
5	A	501	GTP	PB-O3B	-4.74	1.51	1.59
8	B	501	GDP	C6-C5	3.34	1.46	1.41
5	A	501	GTP	C6-C5	3.34	1.46	1.41

All (5) bond angle outliers are listed below:

Mol	Chain	Res	Type	Atoms	Z	Observed(°)	Ideal(°)
8	B	501	GDP	C6-C5-N7	-18.83	131.60	134.14
5	A	501	GTP	C6-C5-N7	-16.52	131.91	134.14
8	B	501	GDP	C6-N1-C2	3.23	125.15	119.51
5	A	501	GTP	C6-N1-C2	3.09	124.92	119.51
5	A	501	GTP	O3A-PB-O3B	2.39	106.51	101.66

There are no chirality outliers.

There are no torsion outliers.

There are no ring outliers.

5.7 Other polymers ⓘ

There are no such residues in this entry.

5.8 Polymer linkage issues

There are no chain breaks in this entry.

6 Fit of model and data ⓘ

6.1 Protein, DNA and RNA chains ⓘ

In the following table, the column labelled ‘#RSRZ> 2’ contains the number (and percentage) of RSRZ outliers, followed by percent RSRZ outliers for the chain as percentile scores relative to all X-ray entries and entries of similar resolution. The OWAB column contains the minimum, median, 95th percentile and maximum values of the occupancy-weighted average B-factor per residue. The column labelled ‘Q< 0.9’ lists the number of (and percentage) of residues with an average occupancy less than 0.9.

Mol	Chain	Analysed	<RSRZ>	#RSRZ>2	OWAB(Å ²)	Q<0.9
1	A	437/451 (96%)	0.44	37 (8%) 11 8	39, 60, 95, 124	6 (1%)
2	B	431/445 (96%)	0.07	11 (2%) 53 50	37, 53, 80, 126	4 (0%)
3	C	64/87 (73%)	0.55	7 (10%) 6 4	50, 70, 100, 133	0
4	D	159/169 (94%)	-0.09	5 (3%) 47 43	35, 51, 78, 130	0
All	All	1091/1152 (94%)	0.22	60 (5%) 24 21	35, 56, 90, 133	10 (0%)

All (60) RSRZ outliers are listed below:

Mol	Chain	Res	Type	RSRZ
1	A	43	GLY	12.0
1	A	42	ILE	8.7
4	D	168	LEU	8.1
4	D	169	ASN	6.5
3	C	45	PRO	6.4
1	A	281	ALA	6.1
2	B	283	TYR	6.0
1	A	437	VAL	5.8
1	A	337	THR	4.9
1	A	321	GLY	4.6
1	A	46	ASP	4.2
4	D	166	GLN	4.2
2	B	1	MET	4.1
3	C	49	GLU	4.1
2	B	281	GLN	3.9
3	C	90	GLU	3.9
1	A	345	ASP	3.6
3	C	27	PRO	3.5
1	A	374	ALA	3.4
1	A	372	GLN	3.3
1	A	45	GLY	3.3

Continued on next page...

Continued from previous page...

Mol	Chain	Res	Type	RSRZ
2	B	416	MET	3.2
3	C	24	LEU	3.1
2	B	441	ASP	3.1
1	A	341	ILE	3.1
1	A	370	LYS	2.9
1	A	338	LYS	2.9
1	A	369	ALA	2.9
1	A	436	GLY	2.9
1	A	262	TYR	2.9
1	A	282	TYR	2.8
1	A	41	THR	2.8
2	B	285	ALA	2.8
3	C	52	LYS	2.8
1	A	44	GLY	2.8
1	A	347	CYS	2.7
1	A	340	SER	2.6
1	A	335	ILE	2.6
2	B	440	ALA	2.6
1	A	165	SER	2.5
3	C	28	SER	2.5
1	A	276	ILE	2.4
4	D	11	GLY	2.4
1	A	133	GLN	2.4
4	D	167	LYS	2.4
1	A	246	GLY	2.4
1	A	371	VAL	2.3
2	B	39	ASP	2.3
2	B	75	MET	2.3
1	A	47	ASP	2.2
1	A	367	ASP	2.2
1	A	59	GLY	2.2
1	A	32	PRO	2.1
1	A	88	HIS	2.1
2	B	214	PHE	2.1
1	A	336	LYS	2.1
1	A	18	ASN	2.0
1	A	170	SER	2.0
1	A	346	TRP	2.0
2	B	284	ARG	2.0

6.2 Non-standard residues in protein, DNA, RNA chains ⓘ

There are no non-standard protein/DNA/RNA residues in this entry.

6.3 Carbohydrates ⓘ

There are no carbohydrates in this entry.

6.4 Ligands ⓘ

In the following table, the Atoms column lists the number of modelled atoms in the group and the number defined in the chemical component dictionary. LLDF column lists the quality of electron density of the group with respect to its neighbouring residues in protein, DNA or RNA chains. The B-factors column lists the minimum, median, 95th percentile and maximum values of B factors of atoms in the group. The column labelled 'Q< 0.9' lists the number of atoms with occupancy less than 0.9.

Mol	Type	Chain	Res	Atoms	RSR	LLDF	B-factors(Å ²)	Q<0.9
9	MES	B	502	12/12	0.33	3.95	129,135,136,136	0
7	SO4	A	503	5/5	0.30	1.60	126,126,127,128	0
8	GDP	B	501	28/28	0.17	0.23	40,45,48,52	0
5	GTP	A	501	32/32	0.19	0.00	39,46,51,57	0
6	MG	A	502	1/1	0.17	-0.54	48,48,48,48	0

6.5 Other polymers ⓘ

There are no such residues in this entry.