



# wwPDB X-ray Structure Validation Summary Report

Feb 26, 2014 – 09:37 PM GMT

PDB ID : 4F7B  
Title : Structure of the lysosomal domain of limp-2  
Authors : Neculai, D.; Ravichandran, M.; Seitova, A.; Neculai, M.; Pizzaro, J.C.; Bountra, C.; Edwards, A.M.; Arrowsmith, C.H.; Dhe-Paganon, D.; Structural Genomics Consortium (SGC)  
Deposited on : 2012-05-15  
Resolution : 3.00 Å(reported)

This is a wwPDB validation summary report for a publicly released PDB entry.  
We welcome your comments at [validation@mail.wwpdb.org](mailto:validation@mail.wwpdb.org)  
A user guide is available at <http://wwpdb.org/ValidationPDFNotes.html>

---

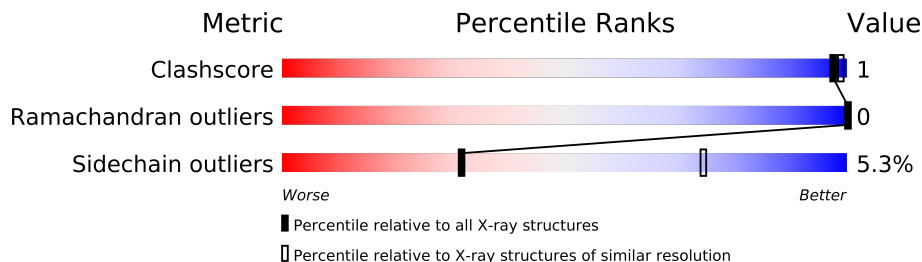
The following versions of software and data (see [references](#)) were used in the production of this report:

MolProbity : 4.02b-467  
Mogul : 1.15 2013  
Xtriage (Phenix) : dev-1323  
EDS : **FAILED**  
Percentile statistics : 21963  
Ideal geometry (proteins) : Engh & Huber (2001)  
Ideal geometry (DNA, RNA) : Parkinson et. al. (1996)  
Validation Pipeline (wwPDB-VP) : stable22683

# 1 Overall quality at a glance

The reported resolution of this entry is 3.00 Å.

Percentile scores (ranging between 0-100) for global validation metrics of the entry are shown in the following graphic. The table shows the number of entries on which the scores are based.



| Metric                | Whole archive<br>(#Entries) | Similar resolution<br>(#Entries, resolution range(Å)) |
|-----------------------|-----------------------------|---|
| Clashscore            | 79885                       | 1594 (3.00-3.00)                                      |
| Ramachandran outliers | 78287                       | 1537 (3.00-3.00)                                      |
| Sidechain outliers    | 78261                       | 1540 (3.00-3.00)                                      |

The table below summarises the geometric issues observed across the polymeric chains and their fit to the electron density. The red, orange, yellow and green segments on the lower bar indicate the fraction of residues that contain outliers for  $\geq 3$ , 2, 1 and 0 types of geometric quality criteria. The upper red bar (where present) indicates the fraction of residues that have poor fit to the electron density.

Note EDS failed to run properly.

| Mol | Chain | Length | Quality of chain |
|-----|-------|--------|------------------|
| 1   | A     | 423    |                  |
| 1   | B     | 423    |                  |
| 1   | C     | 423    |                  |
| 1   | D     | 423    |                  |
| 1   | E     | 423    |                  |
| 1   | F     | 423    |                  |

## 2 Entry composition

There are 10 unique types of molecules in this entry. The entry contains 19810 atoms, of which 0 are hydrogen and 0 are deuterium.

In the tables below, the ZeroOcc column contains the number of atoms modelled with zero occupancy, the AltConf column contains the number of residues with at least one atom in alternate conformation and the Trace column contains the number of residues modelled with at most 2 atoms.

- Molecule 1 is a protein called Lysosome membrane protein 2.

| Mol | Chain | Residues | Atoms |      |     |     |    | ZeroOcc | AltConf | Trace |
|-----|-------|----------|-------|------|-----|-----|----|---------|---------|-------|
| 1   | A     | 393      | Total | C    | N   | O   | S  | 0       | 0       | 0     |
|     |       |          | 3093  | 1995 | 503 | 584 | 11 |         |         |       |
| 1   | B     | 393      | Total | C    | N   | O   | S  | 0       | 0       | 0     |
|     |       |          | 3073  | 1981 | 493 | 588 | 11 |         |         |       |
| 1   | C     | 378      | Total | C    | N   | O   | S  | 0       | 0       | 0     |
|     |       |          | 2969  | 1919 | 475 | 564 | 11 |         |         |       |
| 1   | D     | 389      | Total | C    | N   | O   | S  | 0       | 0       | 0     |
|     |       |          | 3090  | 1989 | 501 | 589 | 11 |         |         |       |
| 1   | E     | 390      | Total | C    | N   | O   | S  | 0       | 0       | 0     |
|     |       |          | 3100  | 1999 | 503 | 587 | 11 |         |         |       |
| 1   | F     | 390      | Total | C    | N   | O   | S  | 0       | 0       | 0     |
|     |       |          | 3100  | 1997 | 501 | 591 | 11 |         |         |       |

There are 162 discrepancies between the modelled and reference sequences:

| Chain | Residue | Modelled | Actual | Comment        | Reference  |
|-------|---------|----------|--------|----------------|------------|
| A     | 8       | ALA      | -      | EXPRESSION TAG | UNP Q14108 |
| A     | 9       | ALA      | -      | EXPRESSION TAG | UNP Q14108 |
| A     | 10      | PRO      | -      | EXPRESSION TAG | UNP Q14108 |
| A     | 11      | GLU      | -      | EXPRESSION TAG | UNP Q14108 |
| A     | 12      | HIS      | -      | EXPRESSION TAG | UNP Q14108 |
| A     | 13      | HIS      | -      | EXPRESSION TAG | UNP Q14108 |
| A     | 14      | HIS      | -      | EXPRESSION TAG | UNP Q14108 |
| A     | 15      | HIS      | -      | EXPRESSION TAG | UNP Q14108 |
| A     | 16      | HIS      | -      | EXPRESSION TAG | UNP Q14108 |
| A     | 17      | HIS      | -      | EXPRESSION TAG | UNP Q14108 |
| A     | 18      | ASP      | -      | EXPRESSION TAG | UNP Q14108 |
| A     | 19      | TYR      | -      | EXPRESSION TAG | UNP Q14108 |
| A     | 20      | ASP      | -      | EXPRESSION TAG | UNP Q14108 |
| A     | 21      | ILE      | -      | EXPRESSION TAG | UNP Q14108 |
| A     | 22      | PRO      | -      | EXPRESSION TAG | UNP Q14108 |
| A     | 23      | THR      | -      | EXPRESSION TAG | UNP Q14108 |
| A     | 24      | THR      | -      | EXPRESSION TAG | UNP Q14108 |

*Continued on next page...*

*Continued from previous page...*

| Chain | Residue | Modelled | Actual | Comment        | Reference  |
|-------|---------|----------|--------|----------------|------------|
| A     | 25      | GLU      | -      | EXPRESSION TAG | UNP Q14108 |
| A     | 26      | ASN      | -      | EXPRESSION TAG | UNP Q14108 |
| A     | 27      | LEU      | -      | EXPRESSION TAG | UNP Q14108 |
| A     | 28      | TYR      | -      | EXPRESSION TAG | UNP Q14108 |
| A     | 29      | PHE      | -      | EXPRESSION TAG | UNP Q14108 |
| A     | 30      | GLN      | -      | EXPRESSION TAG | UNP Q14108 |
| A     | 31      | GLY      | -      | EXPRESSION TAG | UNP Q14108 |
| A     | 32      | ALA      | -      | EXPRESSION TAG | UNP Q14108 |
| A     | 33      | MET      | -      | EXPRESSION TAG | UNP Q14108 |
| A     | 34      | ASP      | -      | EXPRESSION TAG | UNP Q14108 |
| B     | 8       | ALA      | -      | EXPRESSION TAG | UNP Q14108 |
| B     | 9       | ALA      | -      | EXPRESSION TAG | UNP Q14108 |
| B     | 10      | PRO      | -      | EXPRESSION TAG | UNP Q14108 |
| B     | 11      | GLU      | -      | EXPRESSION TAG | UNP Q14108 |
| B     | 12      | HIS      | -      | EXPRESSION TAG | UNP Q14108 |
| B     | 13      | HIS      | -      | EXPRESSION TAG | UNP Q14108 |
| B     | 14      | HIS      | -      | EXPRESSION TAG | UNP Q14108 |
| B     | 15      | HIS      | -      | EXPRESSION TAG | UNP Q14108 |
| B     | 16      | HIS      | -      | EXPRESSION TAG | UNP Q14108 |
| B     | 17      | HIS      | -      | EXPRESSION TAG | UNP Q14108 |
| B     | 18      | ASP      | -      | EXPRESSION TAG | UNP Q14108 |
| B     | 19      | TYR      | -      | EXPRESSION TAG | UNP Q14108 |
| B     | 20      | ASP      | -      | EXPRESSION TAG | UNP Q14108 |
| B     | 21      | ILE      | -      | EXPRESSION TAG | UNP Q14108 |
| B     | 22      | PRO      | -      | EXPRESSION TAG | UNP Q14108 |
| B     | 23      | THR      | -      | EXPRESSION TAG | UNP Q14108 |
| B     | 24      | THR      | -      | EXPRESSION TAG | UNP Q14108 |
| B     | 25      | GLU      | -      | EXPRESSION TAG | UNP Q14108 |
| B     | 26      | ASN      | -      | EXPRESSION TAG | UNP Q14108 |
| B     | 27      | LEU      | -      | EXPRESSION TAG | UNP Q14108 |
| B     | 28      | TYR      | -      | EXPRESSION TAG | UNP Q14108 |
| B     | 29      | PHE      | -      | EXPRESSION TAG | UNP Q14108 |
| B     | 30      | GLN      | -      | EXPRESSION TAG | UNP Q14108 |
| B     | 31      | GLY      | -      | EXPRESSION TAG | UNP Q14108 |
| B     | 32      | ALA      | -      | EXPRESSION TAG | UNP Q14108 |
| B     | 33      | MET      | -      | EXPRESSION TAG | UNP Q14108 |
| B     | 34      | ASP      | -      | EXPRESSION TAG | UNP Q14108 |
| C     | 8       | ALA      | -      | EXPRESSION TAG | UNP Q14108 |
| C     | 9       | ALA      | -      | EXPRESSION TAG | UNP Q14108 |
| C     | 10      | PRO      | -      | EXPRESSION TAG | UNP Q14108 |
| C     | 11      | GLU      | -      | EXPRESSION TAG | UNP Q14108 |
| C     | 12      | HIS      | -      | EXPRESSION TAG | UNP Q14108 |

*Continued on next page...*

*Continued from previous page...*

| Chain | Residue | Modelled | Actual | Comment        | Reference  |
|-------|---------|----------|--------|----------------|------------|
| C     | 13      | HIS      | -      | EXPRESSION TAG | UNP Q14108 |
| C     | 14      | HIS      | -      | EXPRESSION TAG | UNP Q14108 |
| C     | 15      | HIS      | -      | EXPRESSION TAG | UNP Q14108 |
| C     | 16      | HIS      | -      | EXPRESSION TAG | UNP Q14108 |
| C     | 17      | HIS      | -      | EXPRESSION TAG | UNP Q14108 |
| C     | 18      | ASP      | -      | EXPRESSION TAG | UNP Q14108 |
| C     | 19      | TYR      | -      | EXPRESSION TAG | UNP Q14108 |
| C     | 20      | ASP      | -      | EXPRESSION TAG | UNP Q14108 |
| C     | 21      | ILE      | -      | EXPRESSION TAG | UNP Q14108 |
| C     | 22      | PRO      | -      | EXPRESSION TAG | UNP Q14108 |
| C     | 23      | THR      | -      | EXPRESSION TAG | UNP Q14108 |
| C     | 24      | THR      | -      | EXPRESSION TAG | UNP Q14108 |
| C     | 25      | GLU      | -      | EXPRESSION TAG | UNP Q14108 |
| C     | 26      | ASN      | -      | EXPRESSION TAG | UNP Q14108 |
| C     | 27      | LEU      | -      | EXPRESSION TAG | UNP Q14108 |
| C     | 28      | TYR      | -      | EXPRESSION TAG | UNP Q14108 |
| C     | 29      | PHE      | -      | EXPRESSION TAG | UNP Q14108 |
| C     | 30      | GLN      | -      | EXPRESSION TAG | UNP Q14108 |
| C     | 31      | GLY      | -      | EXPRESSION TAG | UNP Q14108 |
| C     | 32      | ALA      | -      | EXPRESSION TAG | UNP Q14108 |
| C     | 33      | MET      | -      | EXPRESSION TAG | UNP Q14108 |
| C     | 34      | ASP      | -      | EXPRESSION TAG | UNP Q14108 |
| D     | 8       | ALA      | -      | EXPRESSION TAG | UNP Q14108 |
| D     | 9       | ALA      | -      | EXPRESSION TAG | UNP Q14108 |
| D     | 10      | PRO      | -      | EXPRESSION TAG | UNP Q14108 |
| D     | 11      | GLU      | -      | EXPRESSION TAG | UNP Q14108 |
| D     | 12      | HIS      | -      | EXPRESSION TAG | UNP Q14108 |
| D     | 13      | HIS      | -      | EXPRESSION TAG | UNP Q14108 |
| D     | 14      | HIS      | -      | EXPRESSION TAG | UNP Q14108 |
| D     | 15      | HIS      | -      | EXPRESSION TAG | UNP Q14108 |
| D     | 16      | HIS      | -      | EXPRESSION TAG | UNP Q14108 |
| D     | 17      | HIS      | -      | EXPRESSION TAG | UNP Q14108 |
| D     | 18      | ASP      | -      | EXPRESSION TAG | UNP Q14108 |
| D     | 19      | TYR      | -      | EXPRESSION TAG | UNP Q14108 |
| D     | 20      | ASP      | -      | EXPRESSION TAG | UNP Q14108 |
| D     | 21      | ILE      | -      | EXPRESSION TAG | UNP Q14108 |
| D     | 22      | PRO      | -      | EXPRESSION TAG | UNP Q14108 |
| D     | 23      | THR      | -      | EXPRESSION TAG | UNP Q14108 |
| D     | 24      | THR      | -      | EXPRESSION TAG | UNP Q14108 |
| D     | 25      | GLU      | -      | EXPRESSION TAG | UNP Q14108 |
| D     | 26      | ASN      | -      | EXPRESSION TAG | UNP Q14108 |
| D     | 27      | LEU      | -      | EXPRESSION TAG | UNP Q14108 |

*Continued on next page...*

*Continued from previous page...*

| Chain | Residue | Modelled | Actual | Comment        | Reference  |
|-------|---------|----------|--------|----------------|------------|
| D     | 28      | TYR      | -      | EXPRESSION TAG | UNP Q14108 |
| D     | 29      | PHE      | -      | EXPRESSION TAG | UNP Q14108 |
| D     | 30      | GLN      | -      | EXPRESSION TAG | UNP Q14108 |
| D     | 31      | GLY      | -      | EXPRESSION TAG | UNP Q14108 |
| D     | 32      | ALA      | -      | EXPRESSION TAG | UNP Q14108 |
| D     | 33      | MET      | -      | EXPRESSION TAG | UNP Q14108 |
| D     | 34      | ASP      | -      | EXPRESSION TAG | UNP Q14108 |
| E     | 8       | ALA      | -      | EXPRESSION TAG | UNP Q14108 |
| E     | 9       | ALA      | -      | EXPRESSION TAG | UNP Q14108 |
| E     | 10      | PRO      | -      | EXPRESSION TAG | UNP Q14108 |
| E     | 11      | GLU      | -      | EXPRESSION TAG | UNP Q14108 |
| E     | 12      | HIS      | -      | EXPRESSION TAG | UNP Q14108 |
| E     | 13      | HIS      | -      | EXPRESSION TAG | UNP Q14108 |
| E     | 14      | HIS      | -      | EXPRESSION TAG | UNP Q14108 |
| E     | 15      | HIS      | -      | EXPRESSION TAG | UNP Q14108 |
| E     | 16      | HIS      | -      | EXPRESSION TAG | UNP Q14108 |
| E     | 17      | HIS      | -      | EXPRESSION TAG | UNP Q14108 |
| E     | 18      | ASP      | -      | EXPRESSION TAG | UNP Q14108 |
| E     | 19      | TYR      | -      | EXPRESSION TAG | UNP Q14108 |
| E     | 20      | ASP      | -      | EXPRESSION TAG | UNP Q14108 |
| E     | 21      | ILE      | -      | EXPRESSION TAG | UNP Q14108 |
| E     | 22      | PRO      | -      | EXPRESSION TAG | UNP Q14108 |
| E     | 23      | THR      | -      | EXPRESSION TAG | UNP Q14108 |
| E     | 24      | THR      | -      | EXPRESSION TAG | UNP Q14108 |
| E     | 25      | GLU      | -      | EXPRESSION TAG | UNP Q14108 |
| E     | 26      | ASN      | -      | EXPRESSION TAG | UNP Q14108 |
| E     | 27      | LEU      | -      | EXPRESSION TAG | UNP Q14108 |
| E     | 28      | TYR      | -      | EXPRESSION TAG | UNP Q14108 |
| E     | 29      | PHE      | -      | EXPRESSION TAG | UNP Q14108 |
| E     | 30      | GLN      | -      | EXPRESSION TAG | UNP Q14108 |
| E     | 31      | GLY      | -      | EXPRESSION TAG | UNP Q14108 |
| E     | 32      | ALA      | -      | EXPRESSION TAG | UNP Q14108 |
| E     | 33      | MET      | -      | EXPRESSION TAG | UNP Q14108 |
| E     | 34      | ASP      | -      | EXPRESSION TAG | UNP Q14108 |
| F     | 8       | ALA      | -      | EXPRESSION TAG | UNP Q14108 |
| F     | 9       | ALA      | -      | EXPRESSION TAG | UNP Q14108 |
| F     | 10      | PRO      | -      | EXPRESSION TAG | UNP Q14108 |
| F     | 11      | GLU      | -      | EXPRESSION TAG | UNP Q14108 |
| F     | 12      | HIS      | -      | EXPRESSION TAG | UNP Q14108 |
| F     | 13      | HIS      | -      | EXPRESSION TAG | UNP Q14108 |
| F     | 14      | HIS      | -      | EXPRESSION TAG | UNP Q14108 |
| F     | 15      | HIS      | -      | EXPRESSION TAG | UNP Q14108 |

*Continued on next page...*

*Continued from previous page...*

| Chain | Residue | Modelled | Actual | Comment        | Reference  |
|-------|---------|----------|--------|----------------|------------|
| F     | 16      | HIS      | -      | EXPRESSION TAG | UNP Q14108 |
| F     | 17      | HIS      | -      | EXPRESSION TAG | UNP Q14108 |
| F     | 18      | ASP      | -      | EXPRESSION TAG | UNP Q14108 |
| F     | 19      | TYR      | -      | EXPRESSION TAG | UNP Q14108 |
| F     | 20      | ASP      | -      | EXPRESSION TAG | UNP Q14108 |
| F     | 21      | ILE      | -      | EXPRESSION TAG | UNP Q14108 |
| F     | 22      | PRO      | -      | EXPRESSION TAG | UNP Q14108 |
| F     | 23      | THR      | -      | EXPRESSION TAG | UNP Q14108 |
| F     | 24      | THR      | -      | EXPRESSION TAG | UNP Q14108 |
| F     | 25      | GLU      | -      | EXPRESSION TAG | UNP Q14108 |
| F     | 26      | ASN      | -      | EXPRESSION TAG | UNP Q14108 |
| F     | 27      | LEU      | -      | EXPRESSION TAG | UNP Q14108 |
| F     | 28      | TYR      | -      | EXPRESSION TAG | UNP Q14108 |
| F     | 29      | PHE      | -      | EXPRESSION TAG | UNP Q14108 |
| F     | 30      | GLN      | -      | EXPRESSION TAG | UNP Q14108 |
| F     | 31      | GLY      | -      | EXPRESSION TAG | UNP Q14108 |
| F     | 32      | ALA      | -      | EXPRESSION TAG | UNP Q14108 |
| F     | 33      | MET      | -      | EXPRESSION TAG | UNP Q14108 |
| F     | 34      | ASP      | -      | EXPRESSION TAG | UNP Q14108 |

- Molecule 2 is a polymer of unknown type called SUGAR (4-MER).

| Mol | Chain | Residues | Atoms |    |   |    | ZeroOcc | AltConf |
|-----|-------|----------|-------|----|---|----|---------|---------|
| 2   | A     | 4        | Total | C  | N | O  | 0       | 0       |
|     |       |          | 50    | 28 | 2 | 20 |         |         |
| 2   | E     | 4        | Total | C  | N | O  | 0       | 0       |
|     |       |          | 50    | 28 | 2 | 20 |         |         |
| 2   | F     | 4        | Total | C  | N | O  | 0       | 0       |
|     |       |          | 50    | 28 | 2 | 20 |         |         |
| 2   | E     | 4        | Total | C  | N | O  | 0       | 0       |
|     |       |          | 50    | 28 | 2 | 20 |         |         |

There are 108 discrepancies between the modelled and reference sequences:

| Chain | Residue | Modelled | Actual | Comment        | Reference  |
|-------|---------|----------|--------|----------------|------------|
| A     | 8       | ALA      | -      | EXPRESSION TAG | UNP Q14108 |
| A     | 9       | ALA      | -      | EXPRESSION TAG | UNP Q14108 |
| A     | 10      | PRO      | -      | EXPRESSION TAG | UNP Q14108 |
| A     | 11      | GLU      | -      | EXPRESSION TAG | UNP Q14108 |
| A     | 12      | HIS      | -      | EXPRESSION TAG | UNP Q14108 |
| A     | 13      | HIS      | -      | EXPRESSION TAG | UNP Q14108 |
| A     | 14      | HIS      | -      | EXPRESSION TAG | UNP Q14108 |

*Continued on next page...*



*Continued from previous page...*

| Chain | Residue | Modelled | Actual | Comment        | Reference  |
|-------|---------|----------|--------|----------------|------------|
| A     | 15      | HIS      | -      | EXPRESSION TAG | UNP Q14108 |
| A     | 16      | HIS      | -      | EXPRESSION TAG | UNP Q14108 |
| A     | 17      | HIS      | -      | EXPRESSION TAG | UNP Q14108 |
| A     | 18      | ASP      | -      | EXPRESSION TAG | UNP Q14108 |
| A     | 19      | TYR      | -      | EXPRESSION TAG | UNP Q14108 |
| A     | 20      | ASP      | -      | EXPRESSION TAG | UNP Q14108 |
| A     | 21      | ILE      | -      | EXPRESSION TAG | UNP Q14108 |
| A     | 22      | PRO      | -      | EXPRESSION TAG | UNP Q14108 |
| A     | 23      | THR      | -      | EXPRESSION TAG | UNP Q14108 |
| A     | 24      | THR      | -      | EXPRESSION TAG | UNP Q14108 |
| A     | 25      | GLU      | -      | EXPRESSION TAG | UNP Q14108 |
| A     | 26      | ASN      | -      | EXPRESSION TAG | UNP Q14108 |
| A     | 27      | LEU      | -      | EXPRESSION TAG | UNP Q14108 |
| A     | 28      | TYR      | -      | EXPRESSION TAG | UNP Q14108 |
| A     | 29      | PHE      | -      | EXPRESSION TAG | UNP Q14108 |
| A     | 30      | GLN      | -      | EXPRESSION TAG | UNP Q14108 |
| A     | 31      | GLY      | -      | EXPRESSION TAG | UNP Q14108 |
| A     | 32      | ALA      | -      | EXPRESSION TAG | UNP Q14108 |
| A     | 33      | MET      | -      | EXPRESSION TAG | UNP Q14108 |
| A     | 34      | ASP      | -      | EXPRESSION TAG | UNP Q14108 |
| E     | 8       | ALA      | -      | EXPRESSION TAG | UNP Q14108 |
| E     | 9       | ALA      | -      | EXPRESSION TAG | UNP Q14108 |
| E     | 10      | PRO      | -      | EXPRESSION TAG | UNP Q14108 |
| E     | 11      | GLU      | -      | EXPRESSION TAG | UNP Q14108 |
| E     | 12      | HIS      | -      | EXPRESSION TAG | UNP Q14108 |
| E     | 13      | HIS      | -      | EXPRESSION TAG | UNP Q14108 |
| E     | 14      | HIS      | -      | EXPRESSION TAG | UNP Q14108 |
| E     | 15      | HIS      | -      | EXPRESSION TAG | UNP Q14108 |
| E     | 16      | HIS      | -      | EXPRESSION TAG | UNP Q14108 |
| E     | 17      | HIS      | -      | EXPRESSION TAG | UNP Q14108 |
| E     | 18      | ASP      | -      | EXPRESSION TAG | UNP Q14108 |
| E     | 19      | TYR      | -      | EXPRESSION TAG | UNP Q14108 |
| E     | 20      | ASP      | -      | EXPRESSION TAG | UNP Q14108 |
| E     | 21      | ILE      | -      | EXPRESSION TAG | UNP Q14108 |
| E     | 22      | PRO      | -      | EXPRESSION TAG | UNP Q14108 |
| E     | 23      | THR      | -      | EXPRESSION TAG | UNP Q14108 |
| E     | 24      | THR      | -      | EXPRESSION TAG | UNP Q14108 |
| E     | 25      | GLU      | -      | EXPRESSION TAG | UNP Q14108 |
| E     | 26      | ASN      | -      | EXPRESSION TAG | UNP Q14108 |
| E     | 27      | LEU      | -      | EXPRESSION TAG | UNP Q14108 |
| E     | 28      | TYR      | -      | EXPRESSION TAG | UNP Q14108 |
| E     | 29      | PHE      | -      | EXPRESSION TAG | UNP Q14108 |

*Continued on next page...*



*Continued from previous page...*

| Chain | Residue | Modelled | Actual | Comment        | Reference  |
|-------|---------|----------|--------|----------------|------------|
| E     | 30      | GLN      | -      | EXPRESSION TAG | UNP Q14108 |
| E     | 31      | GLY      | -      | EXPRESSION TAG | UNP Q14108 |
| E     | 32      | ALA      | -      | EXPRESSION TAG | UNP Q14108 |
| E     | 33      | MET      | -      | EXPRESSION TAG | UNP Q14108 |
| E     | 34      | ASP      | -      | EXPRESSION TAG | UNP Q14108 |
| F     | 8       | ALA      | -      | EXPRESSION TAG | UNP Q14108 |
| F     | 9       | ALA      | -      | EXPRESSION TAG | UNP Q14108 |
| F     | 10      | PRO      | -      | EXPRESSION TAG | UNP Q14108 |
| F     | 11      | GLU      | -      | EXPRESSION TAG | UNP Q14108 |
| F     | 12      | HIS      | -      | EXPRESSION TAG | UNP Q14108 |
| F     | 13      | HIS      | -      | EXPRESSION TAG | UNP Q14108 |
| F     | 14      | HIS      | -      | EXPRESSION TAG | UNP Q14108 |
| F     | 15      | HIS      | -      | EXPRESSION TAG | UNP Q14108 |
| F     | 16      | HIS      | -      | EXPRESSION TAG | UNP Q14108 |
| F     | 17      | HIS      | -      | EXPRESSION TAG | UNP Q14108 |
| F     | 18      | ASP      | -      | EXPRESSION TAG | UNP Q14108 |
| F     | 19      | TYR      | -      | EXPRESSION TAG | UNP Q14108 |
| F     | 20      | ASP      | -      | EXPRESSION TAG | UNP Q14108 |
| F     | 21      | ILE      | -      | EXPRESSION TAG | UNP Q14108 |
| F     | 22      | PRO      | -      | EXPRESSION TAG | UNP Q14108 |
| F     | 23      | THR      | -      | EXPRESSION TAG | UNP Q14108 |
| F     | 24      | THR      | -      | EXPRESSION TAG | UNP Q14108 |
| F     | 25      | GLU      | -      | EXPRESSION TAG | UNP Q14108 |
| F     | 26      | ASN      | -      | EXPRESSION TAG | UNP Q14108 |
| F     | 27      | LEU      | -      | EXPRESSION TAG | UNP Q14108 |
| F     | 28      | TYR      | -      | EXPRESSION TAG | UNP Q14108 |
| F     | 29      | PHE      | -      | EXPRESSION TAG | UNP Q14108 |
| F     | 30      | GLN      | -      | EXPRESSION TAG | UNP Q14108 |
| F     | 31      | GLY      | -      | EXPRESSION TAG | UNP Q14108 |
| F     | 32      | ALA      | -      | EXPRESSION TAG | UNP Q14108 |
| F     | 33      | MET      | -      | EXPRESSION TAG | UNP Q14108 |
| F     | 34      | ASP      | -      | EXPRESSION TAG | UNP Q14108 |
| E     | 8       | ALA      | -      | EXPRESSION TAG | UNP Q14108 |
| E     | 9       | ALA      | -      | EXPRESSION TAG | UNP Q14108 |
| E     | 10      | PRO      | -      | EXPRESSION TAG | UNP Q14108 |
| E     | 11      | GLU      | -      | EXPRESSION TAG | UNP Q14108 |
| E     | 12      | HIS      | -      | EXPRESSION TAG | UNP Q14108 |
| E     | 13      | HIS      | -      | EXPRESSION TAG | UNP Q14108 |
| E     | 14      | HIS      | -      | EXPRESSION TAG | UNP Q14108 |
| E     | 15      | HIS      | -      | EXPRESSION TAG | UNP Q14108 |
| E     | 16      | HIS      | -      | EXPRESSION TAG | UNP Q14108 |
| E     | 17      | HIS      | -      | EXPRESSION TAG | UNP Q14108 |

*Continued on next page...*

*Continued from previous page...*

| Chain | Residue | Modelled | Actual | Comment        | Reference  |
|-------|---------|----------|--------|----------------|------------|
| E     | 18      | ASP      | -      | EXPRESSION TAG | UNP Q14108 |
| E     | 19      | TYR      | -      | EXPRESSION TAG | UNP Q14108 |
| E     | 20      | ASP      | -      | EXPRESSION TAG | UNP Q14108 |
| E     | 21      | ILE      | -      | EXPRESSION TAG | UNP Q14108 |
| E     | 22      | PRO      | -      | EXPRESSION TAG | UNP Q14108 |
| E     | 23      | THR      | -      | EXPRESSION TAG | UNP Q14108 |
| E     | 24      | THR      | -      | EXPRESSION TAG | UNP Q14108 |
| E     | 25      | GLU      | -      | EXPRESSION TAG | UNP Q14108 |
| E     | 26      | ASN      | -      | EXPRESSION TAG | UNP Q14108 |
| E     | 27      | LEU      | -      | EXPRESSION TAG | UNP Q14108 |
| E     | 28      | TYR      | -      | EXPRESSION TAG | UNP Q14108 |
| E     | 29      | PHE      | -      | EXPRESSION TAG | UNP Q14108 |
| E     | 30      | GLN      | -      | EXPRESSION TAG | UNP Q14108 |
| E     | 31      | GLY      | -      | EXPRESSION TAG | UNP Q14108 |
| E     | 32      | ALA      | -      | EXPRESSION TAG | UNP Q14108 |
| E     | 33      | MET      | -      | EXPRESSION TAG | UNP Q14108 |
| E     | 34      | ASP      | -      | EXPRESSION TAG | UNP Q14108 |

- Molecule 3 is a polymer of unknown type called SUGAR (5-MER).

| Mol | Chain | Residues | Atoms |    |   |    | ZeroOcc | AltConf |
|-----|-------|----------|-------|----|---|----|---------|---------|
| 3   | A     | 5        | Total | C  | N | O  | 0       | 0       |
|     |       |          | 64    | 36 | 3 | 25 |         |         |
| 3   | D     | 5        | Total | C  | N | O  | 0       | 0       |
|     |       |          | 64    | 36 | 3 | 25 |         |         |

There are 54 discrepancies between the modelled and reference sequences:

| Chain | Residue | Modelled | Actual | Comment        | Reference  |
|-------|---------|----------|--------|----------------|------------|
| A     | 8       | ALA      | -      | EXPRESSION TAG | UNP Q14108 |
| A     | 9       | ALA      | -      | EXPRESSION TAG | UNP Q14108 |
| A     | 10      | PRO      | -      | EXPRESSION TAG | UNP Q14108 |
| A     | 11      | GLU      | -      | EXPRESSION TAG | UNP Q14108 |
| A     | 12      | HIS      | -      | EXPRESSION TAG | UNP Q14108 |
| A     | 13      | HIS      | -      | EXPRESSION TAG | UNP Q14108 |
| A     | 14      | HIS      | -      | EXPRESSION TAG | UNP Q14108 |
| A     | 15      | HIS      | -      | EXPRESSION TAG | UNP Q14108 |
| A     | 16      | HIS      | -      | EXPRESSION TAG | UNP Q14108 |
| A     | 17      | HIS      | -      | EXPRESSION TAG | UNP Q14108 |
| A     | 18      | ASP      | -      | EXPRESSION TAG | UNP Q14108 |
| A     | 19      | TYR      | -      | EXPRESSION TAG | UNP Q14108 |
| A     | 20      | ASP      | -      | EXPRESSION TAG | UNP Q14108 |

*Continued on next page...*

*Continued from previous page...*

| Chain | Residue | Modelled | Actual | Comment        | Reference  |
|-------|---------|----------|--------|----------------|------------|
| A     | 21      | ILE      | -      | EXPRESSION TAG | UNP Q14108 |
| A     | 22      | PRO      | -      | EXPRESSION TAG | UNP Q14108 |
| A     | 23      | THR      | -      | EXPRESSION TAG | UNP Q14108 |
| A     | 24      | THR      | -      | EXPRESSION TAG | UNP Q14108 |
| A     | 25      | GLU      | -      | EXPRESSION TAG | UNP Q14108 |
| A     | 26      | ASN      | -      | EXPRESSION TAG | UNP Q14108 |
| A     | 27      | LEU      | -      | EXPRESSION TAG | UNP Q14108 |
| A     | 28      | TYR      | -      | EXPRESSION TAG | UNP Q14108 |
| A     | 29      | PHE      | -      | EXPRESSION TAG | UNP Q14108 |
| A     | 30      | GLN      | -      | EXPRESSION TAG | UNP Q14108 |
| A     | 31      | GLY      | -      | EXPRESSION TAG | UNP Q14108 |
| A     | 32      | ALA      | -      | EXPRESSION TAG | UNP Q14108 |
| A     | 33      | MET      | -      | EXPRESSION TAG | UNP Q14108 |
| A     | 34      | ASP      | -      | EXPRESSION TAG | UNP Q14108 |
| D     | 8       | ALA      | -      | EXPRESSION TAG | UNP Q14108 |
| D     | 9       | ALA      | -      | EXPRESSION TAG | UNP Q14108 |
| D     | 10      | PRO      | -      | EXPRESSION TAG | UNP Q14108 |
| D     | 11      | GLU      | -      | EXPRESSION TAG | UNP Q14108 |
| D     | 12      | HIS      | -      | EXPRESSION TAG | UNP Q14108 |
| D     | 13      | HIS      | -      | EXPRESSION TAG | UNP Q14108 |
| D     | 14      | HIS      | -      | EXPRESSION TAG | UNP Q14108 |
| D     | 15      | HIS      | -      | EXPRESSION TAG | UNP Q14108 |
| D     | 16      | HIS      | -      | EXPRESSION TAG | UNP Q14108 |
| D     | 17      | HIS      | -      | EXPRESSION TAG | UNP Q14108 |
| D     | 18      | ASP      | -      | EXPRESSION TAG | UNP Q14108 |
| D     | 19      | TYR      | -      | EXPRESSION TAG | UNP Q14108 |
| D     | 20      | ASP      | -      | EXPRESSION TAG | UNP Q14108 |
| D     | 21      | ILE      | -      | EXPRESSION TAG | UNP Q14108 |
| D     | 22      | PRO      | -      | EXPRESSION TAG | UNP Q14108 |
| D     | 23      | THR      | -      | EXPRESSION TAG | UNP Q14108 |
| D     | 24      | THR      | -      | EXPRESSION TAG | UNP Q14108 |
| D     | 25      | GLU      | -      | EXPRESSION TAG | UNP Q14108 |
| D     | 26      | ASN      | -      | EXPRESSION TAG | UNP Q14108 |
| D     | 27      | LEU      | -      | EXPRESSION TAG | UNP Q14108 |
| D     | 28      | TYR      | -      | EXPRESSION TAG | UNP Q14108 |
| D     | 29      | PHE      | -      | EXPRESSION TAG | UNP Q14108 |
| D     | 30      | GLN      | -      | EXPRESSION TAG | UNP Q14108 |
| D     | 31      | GLY      | -      | EXPRESSION TAG | UNP Q14108 |
| D     | 32      | ALA      | -      | EXPRESSION TAG | UNP Q14108 |
| D     | 33      | MET      | -      | EXPRESSION TAG | UNP Q14108 |
| D     | 34      | ASP      | -      | EXPRESSION TAG | UNP Q14108 |

- Molecule 4 is a polymer of unknown type called SUGAR (3-MER).

| Mol | Chain | Residues | Atoms |    |   |    | ZeroOcc | AltConf |
|-----|-------|----------|-------|----|---|----|---------|---------|
| 4   | A     | 3        | Total | C  | N | O  | 0       | 0       |
|     |       |          | 39    | 22 | 2 | 15 |         |         |
| 4   | A     | 3        | Total | C  | N | O  | 0       | 0       |
|     |       |          | 39    | 22 | 2 | 15 |         |         |
| 4   | B     | 3        | Total | C  | N | O  | 0       | 0       |
|     |       |          | 39    | 22 | 2 | 15 |         |         |
| 4   | C     | 3        | Total | C  | N | O  | 0       | 0       |
|     |       |          | 39    | 22 | 2 | 15 |         |         |
| 4   | D     | 3        | Total | C  | N | O  | 0       | 0       |
|     |       |          | 39    | 22 | 2 | 15 |         |         |
| 4   | E     | 3        | Total | C  | N | O  | 0       | 0       |
|     |       |          | 39    | 22 | 2 | 15 |         |         |
| 4   | F     | 3        | Total | C  | N | O  | 0       | 0       |
|     |       |          | 39    | 22 | 2 | 15 |         |         |
| 4   | F     | 3        | Total | C  | N | O  | 0       | 0       |
|     |       |          | 39    | 22 | 2 | 15 |         |         |

There are 216 discrepancies between the modelled and reference sequences:

| Chain | Residue | Modelled | Actual | Comment        | Reference  |
|-------|---------|----------|--------|----------------|------------|
| A     | 8       | ALA      | -      | EXPRESSION TAG | UNP Q14108 |
| A     | 9       | ALA      | -      | EXPRESSION TAG | UNP Q14108 |
| A     | 10      | PRO      | -      | EXPRESSION TAG | UNP Q14108 |
| A     | 11      | GLU      | -      | EXPRESSION TAG | UNP Q14108 |
| A     | 12      | HIS      | -      | EXPRESSION TAG | UNP Q14108 |
| A     | 13      | HIS      | -      | EXPRESSION TAG | UNP Q14108 |
| A     | 14      | HIS      | -      | EXPRESSION TAG | UNP Q14108 |
| A     | 15      | HIS      | -      | EXPRESSION TAG | UNP Q14108 |
| A     | 16      | HIS      | -      | EXPRESSION TAG | UNP Q14108 |
| A     | 17      | HIS      | -      | EXPRESSION TAG | UNP Q14108 |
| A     | 18      | ASP      | -      | EXPRESSION TAG | UNP Q14108 |
| A     | 19      | TYR      | -      | EXPRESSION TAG | UNP Q14108 |
| A     | 20      | ASP      | -      | EXPRESSION TAG | UNP Q14108 |
| A     | 21      | ILE      | -      | EXPRESSION TAG | UNP Q14108 |
| A     | 22      | PRO      | -      | EXPRESSION TAG | UNP Q14108 |
| A     | 23      | THR      | -      | EXPRESSION TAG | UNP Q14108 |
| A     | 24      | THR      | -      | EXPRESSION TAG | UNP Q14108 |
| A     | 25      | GLU      | -      | EXPRESSION TAG | UNP Q14108 |
| A     | 26      | ASN      | -      | EXPRESSION TAG | UNP Q14108 |
| A     | 27      | LEU      | -      | EXPRESSION TAG | UNP Q14108 |
| A     | 28      | TYR      | -      | EXPRESSION TAG | UNP Q14108 |
| A     | 29      | PHE      | -      | EXPRESSION TAG | UNP Q14108 |
| A     | 30      | GLN      | -      | EXPRESSION TAG | UNP Q14108 |
| A     | 31      | GLY      | -      | EXPRESSION TAG | UNP Q14108 |

*Continued on next page...*

*Continued from previous page...*

| Chain | Residue | Modelled | Actual | Comment        | Reference  |
|-------|---------|----------|--------|----------------|------------|
| A     | 32      | ALA      | -      | EXPRESSION TAG | UNP Q14108 |
| A     | 33      | MET      | -      | EXPRESSION TAG | UNP Q14108 |
| A     | 34      | ASP      | -      | EXPRESSION TAG | UNP Q14108 |
| A     | 8       | ALA      | -      | EXPRESSION TAG | UNP Q14108 |
| A     | 9       | ALA      | -      | EXPRESSION TAG | UNP Q14108 |
| A     | 10      | PRO      | -      | EXPRESSION TAG | UNP Q14108 |
| A     | 11      | GLU      | -      | EXPRESSION TAG | UNP Q14108 |
| A     | 12      | HIS      | -      | EXPRESSION TAG | UNP Q14108 |
| A     | 13      | HIS      | -      | EXPRESSION TAG | UNP Q14108 |
| A     | 14      | HIS      | -      | EXPRESSION TAG | UNP Q14108 |
| A     | 15      | HIS      | -      | EXPRESSION TAG | UNP Q14108 |
| A     | 16      | HIS      | -      | EXPRESSION TAG | UNP Q14108 |
| A     | 17      | HIS      | -      | EXPRESSION TAG | UNP Q14108 |
| A     | 18      | ASP      | -      | EXPRESSION TAG | UNP Q14108 |
| A     | 19      | TYR      | -      | EXPRESSION TAG | UNP Q14108 |
| A     | 20      | ASP      | -      | EXPRESSION TAG | UNP Q14108 |
| A     | 21      | ILE      | -      | EXPRESSION TAG | UNP Q14108 |
| A     | 22      | PRO      | -      | EXPRESSION TAG | UNP Q14108 |
| A     | 23      | THR      | -      | EXPRESSION TAG | UNP Q14108 |
| A     | 24      | THR      | -      | EXPRESSION TAG | UNP Q14108 |
| A     | 25      | GLU      | -      | EXPRESSION TAG | UNP Q14108 |
| A     | 26      | ASN      | -      | EXPRESSION TAG | UNP Q14108 |
| A     | 27      | LEU      | -      | EXPRESSION TAG | UNP Q14108 |
| A     | 28      | TYR      | -      | EXPRESSION TAG | UNP Q14108 |
| A     | 29      | PHE      | -      | EXPRESSION TAG | UNP Q14108 |
| A     | 30      | GLN      | -      | EXPRESSION TAG | UNP Q14108 |
| A     | 31      | GLY      | -      | EXPRESSION TAG | UNP Q14108 |
| A     | 32      | ALA      | -      | EXPRESSION TAG | UNP Q14108 |
| A     | 33      | MET      | -      | EXPRESSION TAG | UNP Q14108 |
| A     | 34      | ASP      | -      | EXPRESSION TAG | UNP Q14108 |
| B     | 8       | ALA      | -      | EXPRESSION TAG | UNP Q14108 |
| B     | 9       | ALA      | -      | EXPRESSION TAG | UNP Q14108 |
| B     | 10      | PRO      | -      | EXPRESSION TAG | UNP Q14108 |
| B     | 11      | GLU      | -      | EXPRESSION TAG | UNP Q14108 |
| B     | 12      | HIS      | -      | EXPRESSION TAG | UNP Q14108 |
| B     | 13      | HIS      | -      | EXPRESSION TAG | UNP Q14108 |
| B     | 14      | HIS      | -      | EXPRESSION TAG | UNP Q14108 |
| B     | 15      | HIS      | -      | EXPRESSION TAG | UNP Q14108 |
| B     | 16      | HIS      | -      | EXPRESSION TAG | UNP Q14108 |
| B     | 17      | HIS      | -      | EXPRESSION TAG | UNP Q14108 |
| B     | 18      | ASP      | -      | EXPRESSION TAG | UNP Q14108 |
| B     | 19      | TYR      | -      | EXPRESSION TAG | UNP Q14108 |

*Continued on next page...*

*Continued from previous page...*

| Chain | Residue | Modelled | Actual | Comment        | Reference  |
|-------|---------|----------|--------|----------------|------------|
| B     | 20      | ASP      | -      | EXPRESSION TAG | UNP Q14108 |
| B     | 21      | ILE      | -      | EXPRESSION TAG | UNP Q14108 |
| B     | 22      | PRO      | -      | EXPRESSION TAG | UNP Q14108 |
| B     | 23      | THR      | -      | EXPRESSION TAG | UNP Q14108 |
| B     | 24      | THR      | -      | EXPRESSION TAG | UNP Q14108 |
| B     | 25      | GLU      | -      | EXPRESSION TAG | UNP Q14108 |
| B     | 26      | ASN      | -      | EXPRESSION TAG | UNP Q14108 |
| B     | 27      | LEU      | -      | EXPRESSION TAG | UNP Q14108 |
| B     | 28      | TYR      | -      | EXPRESSION TAG | UNP Q14108 |
| B     | 29      | PHE      | -      | EXPRESSION TAG | UNP Q14108 |
| B     | 30      | GLN      | -      | EXPRESSION TAG | UNP Q14108 |
| B     | 31      | GLY      | -      | EXPRESSION TAG | UNP Q14108 |
| B     | 32      | ALA      | -      | EXPRESSION TAG | UNP Q14108 |
| B     | 33      | MET      | -      | EXPRESSION TAG | UNP Q14108 |
| B     | 34      | ASP      | -      | EXPRESSION TAG | UNP Q14108 |
| C     | 8       | ALA      | -      | EXPRESSION TAG | UNP Q14108 |
| C     | 9       | ALA      | -      | EXPRESSION TAG | UNP Q14108 |
| C     | 10      | PRO      | -      | EXPRESSION TAG | UNP Q14108 |
| C     | 11      | GLU      | -      | EXPRESSION TAG | UNP Q14108 |
| C     | 12      | HIS      | -      | EXPRESSION TAG | UNP Q14108 |
| C     | 13      | HIS      | -      | EXPRESSION TAG | UNP Q14108 |
| C     | 14      | HIS      | -      | EXPRESSION TAG | UNP Q14108 |
| C     | 15      | HIS      | -      | EXPRESSION TAG | UNP Q14108 |
| C     | 16      | HIS      | -      | EXPRESSION TAG | UNP Q14108 |
| C     | 17      | HIS      | -      | EXPRESSION TAG | UNP Q14108 |
| C     | 18      | ASP      | -      | EXPRESSION TAG | UNP Q14108 |
| C     | 19      | TYR      | -      | EXPRESSION TAG | UNP Q14108 |
| C     | 20      | ASP      | -      | EXPRESSION TAG | UNP Q14108 |
| C     | 21      | ILE      | -      | EXPRESSION TAG | UNP Q14108 |
| C     | 22      | PRO      | -      | EXPRESSION TAG | UNP Q14108 |
| C     | 23      | THR      | -      | EXPRESSION TAG | UNP Q14108 |
| C     | 24      | THR      | -      | EXPRESSION TAG | UNP Q14108 |
| C     | 25      | GLU      | -      | EXPRESSION TAG | UNP Q14108 |
| C     | 26      | ASN      | -      | EXPRESSION TAG | UNP Q14108 |
| C     | 27      | LEU      | -      | EXPRESSION TAG | UNP Q14108 |
| C     | 28      | TYR      | -      | EXPRESSION TAG | UNP Q14108 |
| C     | 29      | PHE      | -      | EXPRESSION TAG | UNP Q14108 |
| C     | 30      | GLN      | -      | EXPRESSION TAG | UNP Q14108 |
| C     | 31      | GLY      | -      | EXPRESSION TAG | UNP Q14108 |
| C     | 32      | ALA      | -      | EXPRESSION TAG | UNP Q14108 |
| C     | 33      | MET      | -      | EXPRESSION TAG | UNP Q14108 |
| C     | 34      | ASP      | -      | EXPRESSION TAG | UNP Q14108 |

*Continued on next page...*



*Continued from previous page...*

| Chain | Residue | Modelled | Actual | Comment        | Reference  |
|-------|---------|----------|--------|----------------|------------|
| D     | 8       | ALA      | -      | EXPRESSION TAG | UNP Q14108 |
| D     | 9       | ALA      | -      | EXPRESSION TAG | UNP Q14108 |
| D     | 10      | PRO      | -      | EXPRESSION TAG | UNP Q14108 |
| D     | 11      | GLU      | -      | EXPRESSION TAG | UNP Q14108 |
| D     | 12      | HIS      | -      | EXPRESSION TAG | UNP Q14108 |
| D     | 13      | HIS      | -      | EXPRESSION TAG | UNP Q14108 |
| D     | 14      | HIS      | -      | EXPRESSION TAG | UNP Q14108 |
| D     | 15      | HIS      | -      | EXPRESSION TAG | UNP Q14108 |
| D     | 16      | HIS      | -      | EXPRESSION TAG | UNP Q14108 |
| D     | 17      | HIS      | -      | EXPRESSION TAG | UNP Q14108 |
| D     | 18      | ASP      | -      | EXPRESSION TAG | UNP Q14108 |
| D     | 19      | TYR      | -      | EXPRESSION TAG | UNP Q14108 |
| D     | 20      | ASP      | -      | EXPRESSION TAG | UNP Q14108 |
| D     | 21      | ILE      | -      | EXPRESSION TAG | UNP Q14108 |
| D     | 22      | PRO      | -      | EXPRESSION TAG | UNP Q14108 |
| D     | 23      | THR      | -      | EXPRESSION TAG | UNP Q14108 |
| D     | 24      | THR      | -      | EXPRESSION TAG | UNP Q14108 |
| D     | 25      | GLU      | -      | EXPRESSION TAG | UNP Q14108 |
| D     | 26      | ASN      | -      | EXPRESSION TAG | UNP Q14108 |
| D     | 27      | LEU      | -      | EXPRESSION TAG | UNP Q14108 |
| D     | 28      | TYR      | -      | EXPRESSION TAG | UNP Q14108 |
| D     | 29      | PHE      | -      | EXPRESSION TAG | UNP Q14108 |
| D     | 30      | GLN      | -      | EXPRESSION TAG | UNP Q14108 |
| D     | 31      | GLY      | -      | EXPRESSION TAG | UNP Q14108 |
| D     | 32      | ALA      | -      | EXPRESSION TAG | UNP Q14108 |
| D     | 33      | MET      | -      | EXPRESSION TAG | UNP Q14108 |
| D     | 34      | ASP      | -      | EXPRESSION TAG | UNP Q14108 |
| E     | 8       | ALA      | -      | EXPRESSION TAG | UNP Q14108 |
| E     | 9       | ALA      | -      | EXPRESSION TAG | UNP Q14108 |
| E     | 10      | PRO      | -      | EXPRESSION TAG | UNP Q14108 |
| E     | 11      | GLU      | -      | EXPRESSION TAG | UNP Q14108 |
| E     | 12      | HIS      | -      | EXPRESSION TAG | UNP Q14108 |
| E     | 13      | HIS      | -      | EXPRESSION TAG | UNP Q14108 |
| E     | 14      | HIS      | -      | EXPRESSION TAG | UNP Q14108 |
| E     | 15      | HIS      | -      | EXPRESSION TAG | UNP Q14108 |
| E     | 16      | HIS      | -      | EXPRESSION TAG | UNP Q14108 |
| E     | 17      | HIS      | -      | EXPRESSION TAG | UNP Q14108 |
| E     | 18      | ASP      | -      | EXPRESSION TAG | UNP Q14108 |
| E     | 19      | TYR      | -      | EXPRESSION TAG | UNP Q14108 |
| E     | 20      | ASP      | -      | EXPRESSION TAG | UNP Q14108 |
| E     | 21      | ILE      | -      | EXPRESSION TAG | UNP Q14108 |
| E     | 22      | PRO      | -      | EXPRESSION TAG | UNP Q14108 |

*Continued on next page...*



*Continued from previous page...*

| Chain | Residue | Modelled | Actual | Comment        | Reference  |
|-------|---------|----------|--------|----------------|------------|
| E     | 23      | THR      | -      | EXPRESSION TAG | UNP Q14108 |
| E     | 24      | THR      | -      | EXPRESSION TAG | UNP Q14108 |
| E     | 25      | GLU      | -      | EXPRESSION TAG | UNP Q14108 |
| E     | 26      | ASN      | -      | EXPRESSION TAG | UNP Q14108 |
| E     | 27      | LEU      | -      | EXPRESSION TAG | UNP Q14108 |
| E     | 28      | TYR      | -      | EXPRESSION TAG | UNP Q14108 |
| E     | 29      | PHE      | -      | EXPRESSION TAG | UNP Q14108 |
| E     | 30      | GLN      | -      | EXPRESSION TAG | UNP Q14108 |
| E     | 31      | GLY      | -      | EXPRESSION TAG | UNP Q14108 |
| E     | 32      | ALA      | -      | EXPRESSION TAG | UNP Q14108 |
| E     | 33      | MET      | -      | EXPRESSION TAG | UNP Q14108 |
| E     | 34      | ASP      | -      | EXPRESSION TAG | UNP Q14108 |
| F     | 8       | ALA      | -      | EXPRESSION TAG | UNP Q14108 |
| F     | 9       | ALA      | -      | EXPRESSION TAG | UNP Q14108 |
| F     | 10      | PRO      | -      | EXPRESSION TAG | UNP Q14108 |
| F     | 11      | GLU      | -      | EXPRESSION TAG | UNP Q14108 |
| F     | 12      | HIS      | -      | EXPRESSION TAG | UNP Q14108 |
| F     | 13      | HIS      | -      | EXPRESSION TAG | UNP Q14108 |
| F     | 14      | HIS      | -      | EXPRESSION TAG | UNP Q14108 |
| F     | 15      | HIS      | -      | EXPRESSION TAG | UNP Q14108 |
| F     | 16      | HIS      | -      | EXPRESSION TAG | UNP Q14108 |
| F     | 17      | HIS      | -      | EXPRESSION TAG | UNP Q14108 |
| F     | 18      | ASP      | -      | EXPRESSION TAG | UNP Q14108 |
| F     | 19      | TYR      | -      | EXPRESSION TAG | UNP Q14108 |
| F     | 20      | ASP      | -      | EXPRESSION TAG | UNP Q14108 |
| F     | 21      | ILE      | -      | EXPRESSION TAG | UNP Q14108 |
| F     | 22      | PRO      | -      | EXPRESSION TAG | UNP Q14108 |
| F     | 23      | THR      | -      | EXPRESSION TAG | UNP Q14108 |
| F     | 24      | THR      | -      | EXPRESSION TAG | UNP Q14108 |
| F     | 25      | GLU      | -      | EXPRESSION TAG | UNP Q14108 |
| F     | 26      | ASN      | -      | EXPRESSION TAG | UNP Q14108 |
| F     | 27      | LEU      | -      | EXPRESSION TAG | UNP Q14108 |
| F     | 28      | TYR      | -      | EXPRESSION TAG | UNP Q14108 |
| F     | 29      | PHE      | -      | EXPRESSION TAG | UNP Q14108 |
| F     | 30      | GLN      | -      | EXPRESSION TAG | UNP Q14108 |
| F     | 31      | GLY      | -      | EXPRESSION TAG | UNP Q14108 |
| F     | 32      | ALA      | -      | EXPRESSION TAG | UNP Q14108 |
| F     | 33      | MET      | -      | EXPRESSION TAG | UNP Q14108 |
| F     | 34      | ASP      | -      | EXPRESSION TAG | UNP Q14108 |
| F     | 8       | ALA      | -      | EXPRESSION TAG | UNP Q14108 |
| F     | 9       | ALA      | -      | EXPRESSION TAG | UNP Q14108 |
| F     | 10      | PRO      | -      | EXPRESSION TAG | UNP Q14108 |

*Continued on next page...*

*Continued from previous page...*

| Chain | Residue | Modelled | Actual | Comment        | Reference  |
|-------|---------|----------|--------|----------------|------------|
| F     | 11      | GLU      | -      | EXPRESSION TAG | UNP Q14108 |
| F     | 12      | HIS      | -      | EXPRESSION TAG | UNP Q14108 |
| F     | 13      | HIS      | -      | EXPRESSION TAG | UNP Q14108 |
| F     | 14      | HIS      | -      | EXPRESSION TAG | UNP Q14108 |
| F     | 15      | HIS      | -      | EXPRESSION TAG | UNP Q14108 |
| F     | 16      | HIS      | -      | EXPRESSION TAG | UNP Q14108 |
| F     | 17      | HIS      | -      | EXPRESSION TAG | UNP Q14108 |
| F     | 18      | ASP      | -      | EXPRESSION TAG | UNP Q14108 |
| F     | 19      | TYR      | -      | EXPRESSION TAG | UNP Q14108 |
| F     | 20      | ASP      | -      | EXPRESSION TAG | UNP Q14108 |
| F     | 21      | ILE      | -      | EXPRESSION TAG | UNP Q14108 |
| F     | 22      | PRO      | -      | EXPRESSION TAG | UNP Q14108 |
| F     | 23      | THR      | -      | EXPRESSION TAG | UNP Q14108 |
| F     | 24      | THR      | -      | EXPRESSION TAG | UNP Q14108 |
| F     | 25      | GLU      | -      | EXPRESSION TAG | UNP Q14108 |
| F     | 26      | ASN      | -      | EXPRESSION TAG | UNP Q14108 |
| F     | 27      | LEU      | -      | EXPRESSION TAG | UNP Q14108 |
| F     | 28      | TYR      | -      | EXPRESSION TAG | UNP Q14108 |
| F     | 29      | PHE      | -      | EXPRESSION TAG | UNP Q14108 |
| F     | 30      | GLN      | -      | EXPRESSION TAG | UNP Q14108 |
| F     | 31      | GLY      | -      | EXPRESSION TAG | UNP Q14108 |
| F     | 32      | ALA      | -      | EXPRESSION TAG | UNP Q14108 |
| F     | 33      | MET      | -      | EXPRESSION TAG | UNP Q14108 |
| F     | 34      | ASP      | -      | EXPRESSION TAG | UNP Q14108 |

- Molecule 5 is a polymer of unknown type called SUGAR (2-MER).

| Mol | Chain | Residues | Atoms |    |   |    | ZeroOcc | AltConf |
|-----|-------|----------|-------|----|---|----|---------|---------|
| 5   | A     | 2        | Total | C  | N | O  | 0       | 0       |
|     |       |          | 28    | 16 | 2 | 10 |         |         |
| 5   | B     | 2        | Total | C  | N | O  | 0       | 0       |
|     |       |          | 28    | 16 | 2 | 10 |         |         |
| 5   | C     | 2        | Total | C  | N | O  | 0       | 0       |
|     |       |          | 28    | 16 | 2 | 10 |         |         |
| 5   | D     | 2        | Total | C  | N | O  | 0       | 0       |
|     |       |          | 28    | 16 | 2 | 10 |         |         |
| 5   | C     | 2        | Total | C  | N | O  | 0       | 0       |
|     |       |          | 28    | 16 | 2 | 10 |         |         |
| 5   | C     | 2        | Total | C  | N | O  | 0       | 0       |
|     |       |          | 28    | 16 | 2 | 10 |         |         |
| 5   | D     | 2        | Total | C  | N | O  | 0       | 0       |
|     |       |          | 28    | 16 | 2 | 10 |         |         |

*Continued on next page...*

*Continued from previous page...*

| Mol | Chain | Residues | Atoms |    |   |    | ZeroOcc | AltConf |
|-----|-------|----------|-------|----|---|----|---------|---------|
| 5   | D     | 2        | Total | C  | N | O  | 0       | 0       |
|     |       |          | 28    | 16 | 2 | 10 |         |         |
| 5   | E     | 2        | Total | C  | N | O  | 0       | 0       |
|     |       |          | 28    | 16 | 2 | 10 |         |         |
| 5   | F     | 2        | Total | C  | N | O  | 0       | 0       |
|     |       |          | 28    | 16 | 2 | 10 |         |         |

There are 270 discrepancies between the modelled and reference sequences:

| Chain | Residue | Modelled | Actual | Comment        | Reference  |
|-------|---------|----------|--------|----------------|------------|
| A     | 8       | ALA      | -      | EXPRESSION TAG | UNP Q14108 |
| A     | 9       | ALA      | -      | EXPRESSION TAG | UNP Q14108 |
| A     | 10      | PRO      | -      | EXPRESSION TAG | UNP Q14108 |
| A     | 11      | GLU      | -      | EXPRESSION TAG | UNP Q14108 |
| A     | 12      | HIS      | -      | EXPRESSION TAG | UNP Q14108 |
| A     | 13      | HIS      | -      | EXPRESSION TAG | UNP Q14108 |
| A     | 14      | HIS      | -      | EXPRESSION TAG | UNP Q14108 |
| A     | 15      | HIS      | -      | EXPRESSION TAG | UNP Q14108 |
| A     | 16      | HIS      | -      | EXPRESSION TAG | UNP Q14108 |
| A     | 17      | HIS      | -      | EXPRESSION TAG | UNP Q14108 |
| A     | 18      | ASP      | -      | EXPRESSION TAG | UNP Q14108 |
| A     | 19      | TYR      | -      | EXPRESSION TAG | UNP Q14108 |
| A     | 20      | ASP      | -      | EXPRESSION TAG | UNP Q14108 |
| A     | 21      | ILE      | -      | EXPRESSION TAG | UNP Q14108 |
| A     | 22      | PRO      | -      | EXPRESSION TAG | UNP Q14108 |
| A     | 23      | THR      | -      | EXPRESSION TAG | UNP Q14108 |
| A     | 24      | THR      | -      | EXPRESSION TAG | UNP Q14108 |
| A     | 25      | GLU      | -      | EXPRESSION TAG | UNP Q14108 |
| A     | 26      | ASN      | -      | EXPRESSION TAG | UNP Q14108 |
| A     | 27      | LEU      | -      | EXPRESSION TAG | UNP Q14108 |
| A     | 28      | TYR      | -      | EXPRESSION TAG | UNP Q14108 |
| A     | 29      | PHE      | -      | EXPRESSION TAG | UNP Q14108 |
| A     | 30      | GLN      | -      | EXPRESSION TAG | UNP Q14108 |
| A     | 31      | GLY      | -      | EXPRESSION TAG | UNP Q14108 |
| A     | 32      | ALA      | -      | EXPRESSION TAG | UNP Q14108 |
| A     | 33      | MET      | -      | EXPRESSION TAG | UNP Q14108 |
| A     | 34      | ASP      | -      | EXPRESSION TAG | UNP Q14108 |
| B     | 8       | ALA      | -      | EXPRESSION TAG | UNP Q14108 |
| B     | 9       | ALA      | -      | EXPRESSION TAG | UNP Q14108 |
| B     | 10      | PRO      | -      | EXPRESSION TAG | UNP Q14108 |
| B     | 11      | GLU      | -      | EXPRESSION TAG | UNP Q14108 |
| B     | 12      | HIS      | -      | EXPRESSION TAG | UNP Q14108 |

*Continued on next page...*

*Continued from previous page...*

| Chain | Residue | Modelled | Actual | Comment        | Reference  |
|-------|---------|----------|--------|----------------|------------|
| B     | 13      | HIS      | -      | EXPRESSION TAG | UNP Q14108 |
| B     | 14      | HIS      | -      | EXPRESSION TAG | UNP Q14108 |
| B     | 15      | HIS      | -      | EXPRESSION TAG | UNP Q14108 |
| B     | 16      | HIS      | -      | EXPRESSION TAG | UNP Q14108 |
| B     | 17      | HIS      | -      | EXPRESSION TAG | UNP Q14108 |
| B     | 18      | ASP      | -      | EXPRESSION TAG | UNP Q14108 |
| B     | 19      | TYR      | -      | EXPRESSION TAG | UNP Q14108 |
| B     | 20      | ASP      | -      | EXPRESSION TAG | UNP Q14108 |
| B     | 21      | ILE      | -      | EXPRESSION TAG | UNP Q14108 |
| B     | 22      | PRO      | -      | EXPRESSION TAG | UNP Q14108 |
| B     | 23      | THR      | -      | EXPRESSION TAG | UNP Q14108 |
| B     | 24      | THR      | -      | EXPRESSION TAG | UNP Q14108 |
| B     | 25      | GLU      | -      | EXPRESSION TAG | UNP Q14108 |
| B     | 26      | ASN      | -      | EXPRESSION TAG | UNP Q14108 |
| B     | 27      | LEU      | -      | EXPRESSION TAG | UNP Q14108 |
| B     | 28      | TYR      | -      | EXPRESSION TAG | UNP Q14108 |
| B     | 29      | PHE      | -      | EXPRESSION TAG | UNP Q14108 |
| B     | 30      | GLN      | -      | EXPRESSION TAG | UNP Q14108 |
| B     | 31      | GLY      | -      | EXPRESSION TAG | UNP Q14108 |
| B     | 32      | ALA      | -      | EXPRESSION TAG | UNP Q14108 |
| B     | 33      | MET      | -      | EXPRESSION TAG | UNP Q14108 |
| B     | 34      | ASP      | -      | EXPRESSION TAG | UNP Q14108 |
| C     | 8       | ALA      | -      | EXPRESSION TAG | UNP Q14108 |
| C     | 9       | ALA      | -      | EXPRESSION TAG | UNP Q14108 |
| C     | 10      | PRO      | -      | EXPRESSION TAG | UNP Q14108 |
| C     | 11      | GLU      | -      | EXPRESSION TAG | UNP Q14108 |
| C     | 12      | HIS      | -      | EXPRESSION TAG | UNP Q14108 |
| C     | 13      | HIS      | -      | EXPRESSION TAG | UNP Q14108 |
| C     | 14      | HIS      | -      | EXPRESSION TAG | UNP Q14108 |
| C     | 15      | HIS      | -      | EXPRESSION TAG | UNP Q14108 |
| C     | 16      | HIS      | -      | EXPRESSION TAG | UNP Q14108 |
| C     | 17      | HIS      | -      | EXPRESSION TAG | UNP Q14108 |
| C     | 18      | ASP      | -      | EXPRESSION TAG | UNP Q14108 |
| C     | 19      | TYR      | -      | EXPRESSION TAG | UNP Q14108 |
| C     | 20      | ASP      | -      | EXPRESSION TAG | UNP Q14108 |
| C     | 21      | ILE      | -      | EXPRESSION TAG | UNP Q14108 |
| C     | 22      | PRO      | -      | EXPRESSION TAG | UNP Q14108 |
| C     | 23      | THR      | -      | EXPRESSION TAG | UNP Q14108 |
| C     | 24      | THR      | -      | EXPRESSION TAG | UNP Q14108 |
| C     | 25      | GLU      | -      | EXPRESSION TAG | UNP Q14108 |
| C     | 26      | ASN      | -      | EXPRESSION TAG | UNP Q14108 |
| C     | 27      | LEU      | -      | EXPRESSION TAG | UNP Q14108 |

*Continued on next page...*

*Continued from previous page...*

| Chain | Residue | Modelled | Actual | Comment        | Reference  |
|-------|---------|----------|--------|----------------|------------|
| C     | 28      | TYR      | -      | EXPRESSION TAG | UNP Q14108 |
| C     | 29      | PHE      | -      | EXPRESSION TAG | UNP Q14108 |
| C     | 30      | GLN      | -      | EXPRESSION TAG | UNP Q14108 |
| C     | 31      | GLY      | -      | EXPRESSION TAG | UNP Q14108 |
| C     | 32      | ALA      | -      | EXPRESSION TAG | UNP Q14108 |
| C     | 33      | MET      | -      | EXPRESSION TAG | UNP Q14108 |
| C     | 34      | ASP      | -      | EXPRESSION TAG | UNP Q14108 |
| D     | 8       | ALA      | -      | EXPRESSION TAG | UNP Q14108 |
| D     | 9       | ALA      | -      | EXPRESSION TAG | UNP Q14108 |
| D     | 10      | PRO      | -      | EXPRESSION TAG | UNP Q14108 |
| D     | 11      | GLU      | -      | EXPRESSION TAG | UNP Q14108 |
| D     | 12      | HIS      | -      | EXPRESSION TAG | UNP Q14108 |
| D     | 13      | HIS      | -      | EXPRESSION TAG | UNP Q14108 |
| D     | 14      | HIS      | -      | EXPRESSION TAG | UNP Q14108 |
| D     | 15      | HIS      | -      | EXPRESSION TAG | UNP Q14108 |
| D     | 16      | HIS      | -      | EXPRESSION TAG | UNP Q14108 |
| D     | 17      | HIS      | -      | EXPRESSION TAG | UNP Q14108 |
| D     | 18      | ASP      | -      | EXPRESSION TAG | UNP Q14108 |
| D     | 19      | TYR      | -      | EXPRESSION TAG | UNP Q14108 |
| D     | 20      | ASP      | -      | EXPRESSION TAG | UNP Q14108 |
| D     | 21      | ILE      | -      | EXPRESSION TAG | UNP Q14108 |
| D     | 22      | PRO      | -      | EXPRESSION TAG | UNP Q14108 |
| D     | 23      | THR      | -      | EXPRESSION TAG | UNP Q14108 |
| D     | 24      | THR      | -      | EXPRESSION TAG | UNP Q14108 |
| D     | 25      | GLU      | -      | EXPRESSION TAG | UNP Q14108 |
| D     | 26      | ASN      | -      | EXPRESSION TAG | UNP Q14108 |
| D     | 27      | LEU      | -      | EXPRESSION TAG | UNP Q14108 |
| D     | 28      | TYR      | -      | EXPRESSION TAG | UNP Q14108 |
| D     | 29      | PHE      | -      | EXPRESSION TAG | UNP Q14108 |
| D     | 30      | GLN      | -      | EXPRESSION TAG | UNP Q14108 |
| D     | 31      | GLY      | -      | EXPRESSION TAG | UNP Q14108 |
| D     | 32      | ALA      | -      | EXPRESSION TAG | UNP Q14108 |
| D     | 33      | MET      | -      | EXPRESSION TAG | UNP Q14108 |
| D     | 34      | ASP      | -      | EXPRESSION TAG | UNP Q14108 |
| C     | 8       | ALA      | -      | EXPRESSION TAG | UNP Q14108 |
| C     | 9       | ALA      | -      | EXPRESSION TAG | UNP Q14108 |
| C     | 10      | PRO      | -      | EXPRESSION TAG | UNP Q14108 |
| C     | 11      | GLU      | -      | EXPRESSION TAG | UNP Q14108 |
| C     | 12      | HIS      | -      | EXPRESSION TAG | UNP Q14108 |
| C     | 13      | HIS      | -      | EXPRESSION TAG | UNP Q14108 |
| C     | 14      | HIS      | -      | EXPRESSION TAG | UNP Q14108 |
| C     | 15      | HIS      | -      | EXPRESSION TAG | UNP Q14108 |

*Continued on next page...*

*Continued from previous page...*

| Chain | Residue | Modelled | Actual | Comment        | Reference  |
|-------|---------|----------|--------|----------------|------------|
| C     | 16      | HIS      | -      | EXPRESSION TAG | UNP Q14108 |
| C     | 17      | HIS      | -      | EXPRESSION TAG | UNP Q14108 |
| C     | 18      | ASP      | -      | EXPRESSION TAG | UNP Q14108 |
| C     | 19      | TYR      | -      | EXPRESSION TAG | UNP Q14108 |
| C     | 20      | ASP      | -      | EXPRESSION TAG | UNP Q14108 |
| C     | 21      | ILE      | -      | EXPRESSION TAG | UNP Q14108 |
| C     | 22      | PRO      | -      | EXPRESSION TAG | UNP Q14108 |
| C     | 23      | THR      | -      | EXPRESSION TAG | UNP Q14108 |
| C     | 24      | THR      | -      | EXPRESSION TAG | UNP Q14108 |
| C     | 25      | GLU      | -      | EXPRESSION TAG | UNP Q14108 |
| C     | 26      | ASN      | -      | EXPRESSION TAG | UNP Q14108 |
| C     | 27      | LEU      | -      | EXPRESSION TAG | UNP Q14108 |
| C     | 28      | TYR      | -      | EXPRESSION TAG | UNP Q14108 |
| C     | 29      | PHE      | -      | EXPRESSION TAG | UNP Q14108 |
| C     | 30      | GLN      | -      | EXPRESSION TAG | UNP Q14108 |
| C     | 31      | GLY      | -      | EXPRESSION TAG | UNP Q14108 |
| C     | 32      | ALA      | -      | EXPRESSION TAG | UNP Q14108 |
| C     | 33      | MET      | -      | EXPRESSION TAG | UNP Q14108 |
| C     | 34      | ASP      | -      | EXPRESSION TAG | UNP Q14108 |
| C     | 8       | ALA      | -      | EXPRESSION TAG | UNP Q14108 |
| C     | 9       | ALA      | -      | EXPRESSION TAG | UNP Q14108 |
| C     | 10      | PRO      | -      | EXPRESSION TAG | UNP Q14108 |
| C     | 11      | GLU      | -      | EXPRESSION TAG | UNP Q14108 |
| C     | 12      | HIS      | -      | EXPRESSION TAG | UNP Q14108 |
| C     | 13      | HIS      | -      | EXPRESSION TAG | UNP Q14108 |
| C     | 14      | HIS      | -      | EXPRESSION TAG | UNP Q14108 |
| C     | 15      | HIS      | -      | EXPRESSION TAG | UNP Q14108 |
| C     | 16      | HIS      | -      | EXPRESSION TAG | UNP Q14108 |
| C     | 17      | HIS      | -      | EXPRESSION TAG | UNP Q14108 |
| C     | 18      | ASP      | -      | EXPRESSION TAG | UNP Q14108 |
| C     | 19      | TYR      | -      | EXPRESSION TAG | UNP Q14108 |
| C     | 20      | ASP      | -      | EXPRESSION TAG | UNP Q14108 |
| C     | 21      | ILE      | -      | EXPRESSION TAG | UNP Q14108 |
| C     | 22      | PRO      | -      | EXPRESSION TAG | UNP Q14108 |
| C     | 23      | THR      | -      | EXPRESSION TAG | UNP Q14108 |
| C     | 24      | THR      | -      | EXPRESSION TAG | UNP Q14108 |
| C     | 25      | GLU      | -      | EXPRESSION TAG | UNP Q14108 |
| C     | 26      | ASN      | -      | EXPRESSION TAG | UNP Q14108 |
| C     | 27      | LEU      | -      | EXPRESSION TAG | UNP Q14108 |
| C     | 28      | TYR      | -      | EXPRESSION TAG | UNP Q14108 |
| C     | 29      | PHE      | -      | EXPRESSION TAG | UNP Q14108 |
| C     | 30      | GLN      | -      | EXPRESSION TAG | UNP Q14108 |

*Continued on next page...*



*Continued from previous page...*

| Chain | Residue | Modelled | Actual | Comment        | Reference  |
|-------|---------|----------|--------|----------------|------------|
| C     | 31      | GLY      | -      | EXPRESSION TAG | UNP Q14108 |
| C     | 32      | ALA      | -      | EXPRESSION TAG | UNP Q14108 |
| C     | 33      | MET      | -      | EXPRESSION TAG | UNP Q14108 |
| C     | 34      | ASP      | -      | EXPRESSION TAG | UNP Q14108 |
| D     | 8       | ALA      | -      | EXPRESSION TAG | UNP Q14108 |
| D     | 9       | ALA      | -      | EXPRESSION TAG | UNP Q14108 |
| D     | 10      | PRO      | -      | EXPRESSION TAG | UNP Q14108 |
| D     | 11      | GLU      | -      | EXPRESSION TAG | UNP Q14108 |
| D     | 12      | HIS      | -      | EXPRESSION TAG | UNP Q14108 |
| D     | 13      | HIS      | -      | EXPRESSION TAG | UNP Q14108 |
| D     | 14      | HIS      | -      | EXPRESSION TAG | UNP Q14108 |
| D     | 15      | HIS      | -      | EXPRESSION TAG | UNP Q14108 |
| D     | 16      | HIS      | -      | EXPRESSION TAG | UNP Q14108 |
| D     | 17      | HIS      | -      | EXPRESSION TAG | UNP Q14108 |
| D     | 18      | ASP      | -      | EXPRESSION TAG | UNP Q14108 |
| D     | 19      | TYR      | -      | EXPRESSION TAG | UNP Q14108 |
| D     | 20      | ASP      | -      | EXPRESSION TAG | UNP Q14108 |
| D     | 21      | ILE      | -      | EXPRESSION TAG | UNP Q14108 |
| D     | 22      | PRO      | -      | EXPRESSION TAG | UNP Q14108 |
| D     | 23      | THR      | -      | EXPRESSION TAG | UNP Q14108 |
| D     | 24      | THR      | -      | EXPRESSION TAG | UNP Q14108 |
| D     | 25      | GLU      | -      | EXPRESSION TAG | UNP Q14108 |
| D     | 26      | ASN      | -      | EXPRESSION TAG | UNP Q14108 |
| D     | 27      | LEU      | -      | EXPRESSION TAG | UNP Q14108 |
| D     | 28      | TYR      | -      | EXPRESSION TAG | UNP Q14108 |
| D     | 29      | PHE      | -      | EXPRESSION TAG | UNP Q14108 |
| D     | 30      | GLN      | -      | EXPRESSION TAG | UNP Q14108 |
| D     | 31      | GLY      | -      | EXPRESSION TAG | UNP Q14108 |
| D     | 32      | ALA      | -      | EXPRESSION TAG | UNP Q14108 |
| D     | 33      | MET      | -      | EXPRESSION TAG | UNP Q14108 |
| D     | 34      | ASP      | -      | EXPRESSION TAG | UNP Q14108 |
| D     | 8       | ALA      | -      | EXPRESSION TAG | UNP Q14108 |
| D     | 9       | ALA      | -      | EXPRESSION TAG | UNP Q14108 |
| D     | 10      | PRO      | -      | EXPRESSION TAG | UNP Q14108 |
| D     | 11      | GLU      | -      | EXPRESSION TAG | UNP Q14108 |
| D     | 12      | HIS      | -      | EXPRESSION TAG | UNP Q14108 |
| D     | 13      | HIS      | -      | EXPRESSION TAG | UNP Q14108 |
| D     | 14      | HIS      | -      | EXPRESSION TAG | UNP Q14108 |
| D     | 15      | HIS      | -      | EXPRESSION TAG | UNP Q14108 |
| D     | 16      | HIS      | -      | EXPRESSION TAG | UNP Q14108 |
| D     | 17      | HIS      | -      | EXPRESSION TAG | UNP Q14108 |
| D     | 18      | ASP      | -      | EXPRESSION TAG | UNP Q14108 |

*Continued on next page...*



*Continued from previous page...*

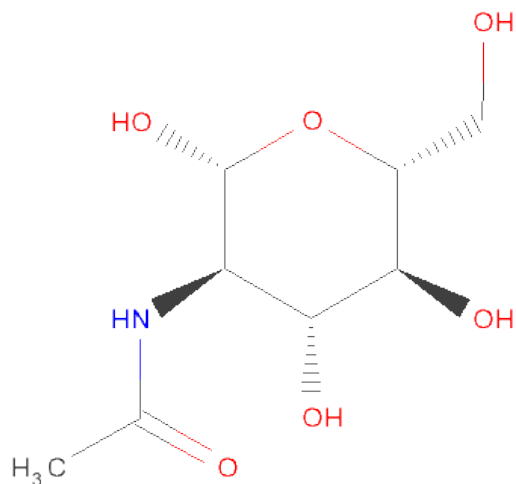
| Chain | Residue | Modelled | Actual | Comment        | Reference  |
|-------|---------|----------|--------|----------------|------------|
| D     | 19      | TYR      | -      | EXPRESSION TAG | UNP Q14108 |
| D     | 20      | ASP      | -      | EXPRESSION TAG | UNP Q14108 |
| D     | 21      | ILE      | -      | EXPRESSION TAG | UNP Q14108 |
| D     | 22      | PRO      | -      | EXPRESSION TAG | UNP Q14108 |
| D     | 23      | THR      | -      | EXPRESSION TAG | UNP Q14108 |
| D     | 24      | THR      | -      | EXPRESSION TAG | UNP Q14108 |
| D     | 25      | GLU      | -      | EXPRESSION TAG | UNP Q14108 |
| D     | 26      | ASN      | -      | EXPRESSION TAG | UNP Q14108 |
| D     | 27      | LEU      | -      | EXPRESSION TAG | UNP Q14108 |
| D     | 28      | TYR      | -      | EXPRESSION TAG | UNP Q14108 |
| D     | 29      | PHE      | -      | EXPRESSION TAG | UNP Q14108 |
| D     | 30      | GLN      | -      | EXPRESSION TAG | UNP Q14108 |
| D     | 31      | GLY      | -      | EXPRESSION TAG | UNP Q14108 |
| D     | 32      | ALA      | -      | EXPRESSION TAG | UNP Q14108 |
| D     | 33      | MET      | -      | EXPRESSION TAG | UNP Q14108 |
| D     | 34      | ASP      | -      | EXPRESSION TAG | UNP Q14108 |
| E     | 8       | ALA      | -      | EXPRESSION TAG | UNP Q14108 |
| E     | 9       | ALA      | -      | EXPRESSION TAG | UNP Q14108 |
| E     | 10      | PRO      | -      | EXPRESSION TAG | UNP Q14108 |
| E     | 11      | GLU      | -      | EXPRESSION TAG | UNP Q14108 |
| E     | 12      | HIS      | -      | EXPRESSION TAG | UNP Q14108 |
| E     | 13      | HIS      | -      | EXPRESSION TAG | UNP Q14108 |
| E     | 14      | HIS      | -      | EXPRESSION TAG | UNP Q14108 |
| E     | 15      | HIS      | -      | EXPRESSION TAG | UNP Q14108 |
| E     | 16      | HIS      | -      | EXPRESSION TAG | UNP Q14108 |
| E     | 17      | HIS      | -      | EXPRESSION TAG | UNP Q14108 |
| E     | 18      | ASP      | -      | EXPRESSION TAG | UNP Q14108 |
| E     | 19      | TYR      | -      | EXPRESSION TAG | UNP Q14108 |
| E     | 20      | ASP      | -      | EXPRESSION TAG | UNP Q14108 |
| E     | 21      | ILE      | -      | EXPRESSION TAG | UNP Q14108 |
| E     | 22      | PRO      | -      | EXPRESSION TAG | UNP Q14108 |
| E     | 23      | THR      | -      | EXPRESSION TAG | UNP Q14108 |
| E     | 24      | THR      | -      | EXPRESSION TAG | UNP Q14108 |
| E     | 25      | GLU      | -      | EXPRESSION TAG | UNP Q14108 |
| E     | 26      | ASN      | -      | EXPRESSION TAG | UNP Q14108 |
| E     | 27      | LEU      | -      | EXPRESSION TAG | UNP Q14108 |
| E     | 28      | TYR      | -      | EXPRESSION TAG | UNP Q14108 |
| E     | 29      | PHE      | -      | EXPRESSION TAG | UNP Q14108 |
| E     | 30      | GLN      | -      | EXPRESSION TAG | UNP Q14108 |
| E     | 31      | GLY      | -      | EXPRESSION TAG | UNP Q14108 |
| E     | 32      | ALA      | -      | EXPRESSION TAG | UNP Q14108 |
| E     | 33      | MET      | -      | EXPRESSION TAG | UNP Q14108 |

*Continued on next page...*

*Continued from previous page...*

| Chain | Residue | Modelled | Actual | Comment        | Reference  |
|-------|---------|----------|--------|----------------|------------|
| E     | 34      | ASP      | -      | EXPRESSION TAG | UNP Q14108 |
| F     | 8       | ALA      | -      | EXPRESSION TAG | UNP Q14108 |
| F     | 9       | ALA      | -      | EXPRESSION TAG | UNP Q14108 |
| F     | 10      | PRO      | -      | EXPRESSION TAG | UNP Q14108 |
| F     | 11      | GLU      | -      | EXPRESSION TAG | UNP Q14108 |
| F     | 12      | HIS      | -      | EXPRESSION TAG | UNP Q14108 |
| F     | 13      | HIS      | -      | EXPRESSION TAG | UNP Q14108 |
| F     | 14      | HIS      | -      | EXPRESSION TAG | UNP Q14108 |
| F     | 15      | HIS      | -      | EXPRESSION TAG | UNP Q14108 |
| F     | 16      | HIS      | -      | EXPRESSION TAG | UNP Q14108 |
| F     | 17      | HIS      | -      | EXPRESSION TAG | UNP Q14108 |
| F     | 18      | ASP      | -      | EXPRESSION TAG | UNP Q14108 |
| F     | 19      | TYR      | -      | EXPRESSION TAG | UNP Q14108 |
| F     | 20      | ASP      | -      | EXPRESSION TAG | UNP Q14108 |
| F     | 21      | ILE      | -      | EXPRESSION TAG | UNP Q14108 |
| F     | 22      | PRO      | -      | EXPRESSION TAG | UNP Q14108 |
| F     | 23      | THR      | -      | EXPRESSION TAG | UNP Q14108 |
| F     | 24      | THR      | -      | EXPRESSION TAG | UNP Q14108 |
| F     | 25      | GLU      | -      | EXPRESSION TAG | UNP Q14108 |
| F     | 26      | ASN      | -      | EXPRESSION TAG | UNP Q14108 |
| F     | 27      | LEU      | -      | EXPRESSION TAG | UNP Q14108 |
| F     | 28      | TYR      | -      | EXPRESSION TAG | UNP Q14108 |
| F     | 29      | PHE      | -      | EXPRESSION TAG | UNP Q14108 |
| F     | 30      | GLN      | -      | EXPRESSION TAG | UNP Q14108 |
| F     | 31      | GLY      | -      | EXPRESSION TAG | UNP Q14108 |
| F     | 32      | ALA      | -      | EXPRESSION TAG | UNP Q14108 |
| F     | 33      | MET      | -      | EXPRESSION TAG | UNP Q14108 |
| F     | 34      | ASP      | -      | EXPRESSION TAG | UNP Q14108 |

- Molecule 6 is SUGAR (N-ACETYL-D-GLUCOSAMINE) (three-letter code: NAG) (formula:  $C_8H_{15}NO_6$ ).



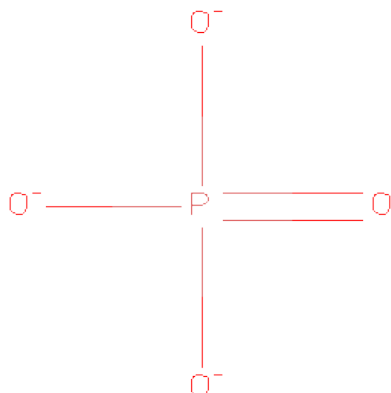
| Mol | Chain | Residues | Atoms |   |   |   | ZeroOcc | AltConf |
|-----|-------|----------|-------|---|---|---|---------|---------|
| 6   | A     | 1        | Total | C | N | O | 0       | 0       |
|     |       |          | 14    | 8 | 1 | 5 |         |         |
| 6   | A     | 1        | Total | C | N | O | 0       | 0       |
|     |       |          | 14    | 8 | 1 | 5 |         |         |
| 6   | A     | 1        | Total | C | N | O | 0       | 0       |
|     |       |          | 14    | 8 | 1 | 5 |         |         |
| 6   | B     | 1        | Total | C | N | O | 0       | 0       |
|     |       |          | 14    | 8 | 1 | 5 |         |         |
| 6   | B     | 1        | Total | C | N | O | 0       | 0       |
|     |       |          | 14    | 8 | 1 | 5 |         |         |
| 6   | B     | 1        | Total | C | N | O | 0       | 0       |
|     |       |          | 14    | 8 | 1 | 5 |         |         |
| 6   | B     | 1        | Total | C | N | O | 0       | 0       |
|     |       |          | 14    | 8 | 1 | 5 |         |         |
| 6   | C     | 1        | Total | C | N | O | 0       | 0       |
|     |       |          | 14    | 8 | 1 | 5 |         |         |
| 6   | C     | 1        | Total | C | N | O | 0       | 0       |
|     |       |          | 14    | 8 | 1 | 5 |         |         |
| 6   | D     | 1        | Total | C | N | O | 0       | 0       |
|     |       |          | 14    | 8 | 1 | 5 |         |         |
| 6   | E     | 1        | Total | C | N | O | 0       | 0       |
|     |       |          | 14    | 8 | 1 | 5 |         |         |
| 6   | F     | 1        | Total | C | N | O | 0       | 0       |
|     |       |          | 14    | 8 | 1 | 5 |         |         |
| 6   | F     | 1        | Total | C | N | O | 0       | 0       |
|     |       |          | 14    | 8 | 1 | 5 |         |         |
| 6   | F     | 1        | Total | C | N | O | 0       | 0       |
|     |       |          | 14    | 8 | 1 | 5 |         |         |

Continued on next page...

*Continued from previous page...*

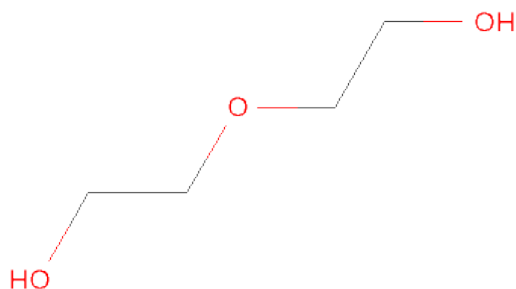
| Mol | Chain | Residues | Atoms |   |   |   | ZeroOcc | AltConf |
|-----|-------|----------|-------|---|---|---|---------|---------|
| 6   | F     | 1        | Total | C | N | O | 0       | 0       |
|     |       |          | 14    | 8 | 1 | 5 |         |         |

- Molecule 7 is PHOSPHATE ION (three-letter code: PO4) (formula: O<sub>4</sub>P).



| Mol | Chain | Residues | Atoms |   |   | ZeroOcc | AltConf |
|-----|-------|----------|-------|---|---|---------|---------|
| 7   | A     | 1        | Total | O | P | 0       | 0       |
|     |       |          | 5     | 4 | 1 |         |         |
| 7   | B     | 1        | Total | O | P | 0       | 0       |
|     |       |          | 5     | 4 | 1 |         |         |
| 7   | C     | 1        | Total | O | P | 0       | 0       |
|     |       |          | 5     | 4 | 1 |         |         |
| 7   | D     | 1        | Total | O | P | 0       | 0       |
|     |       |          | 5     | 4 | 1 |         |         |
| 7   | E     | 1        | Total | O | P | 0       | 0       |
|     |       |          | 5     | 4 | 1 |         |         |
| 7   | F     | 1        | Total | O | P | 0       | 0       |
|     |       |          | 5     | 4 | 1 |         |         |

- Molecule 8 is DI(HYDROXYETHYL)ETHER (three-letter code: PEG) (formula: C<sub>4</sub>H<sub>10</sub>O<sub>3</sub>).



| Mol | Chain | Residues | Atoms |   |   | ZeroOcc | AltConf |
|-----|-------|----------|-------|---|---|---------|---------|
| 8   | A     | 1        | Total | C | O | 0       | 0       |
|     |       |          | 7     | 4 | 3 |         |         |
| 8   | F     | 1        | Total | C | O | 0       | 0       |
|     |       |          | 7     | 4 | 3 |         |         |

- Molecule 9 is a polymer of unknown type called SUGAR (6-MER).

| Mol | Chain | Residues | Atoms |    |   |    | ZeroOcc | AltConf |
|-----|-------|----------|-------|----|---|----|---------|---------|
| 9   | B     | 6        | Total | C  | N | O  | 0       | 0       |
|     |       |          | 75    | 42 | 3 | 30 |         |         |
| 9   | E     | 6        | Total | C  | N | O  | 0       | 0       |
|     |       |          | 75    | 42 | 3 | 30 |         |         |

There are 54 discrepancies between the modelled and reference sequences:

| Chain | Residue | Modelled | Actual | Comment        | Reference  |
|-------|---------|----------|--------|----------------|------------|
| B     | 8       | ALA      | -      | EXPRESSION TAG | UNP Q14108 |
| B     | 9       | ALA      | -      | EXPRESSION TAG | UNP Q14108 |
| B     | 10      | PRO      | -      | EXPRESSION TAG | UNP Q14108 |
| B     | 11      | GLU      | -      | EXPRESSION TAG | UNP Q14108 |
| B     | 12      | HIS      | -      | EXPRESSION TAG | UNP Q14108 |
| B     | 13      | HIS      | -      | EXPRESSION TAG | UNP Q14108 |
| B     | 14      | HIS      | -      | EXPRESSION TAG | UNP Q14108 |
| B     | 15      | HIS      | -      | EXPRESSION TAG | UNP Q14108 |
| B     | 16      | HIS      | -      | EXPRESSION TAG | UNP Q14108 |
| B     | 17      | HIS      | -      | EXPRESSION TAG | UNP Q14108 |
| B     | 18      | ASP      | -      | EXPRESSION TAG | UNP Q14108 |

*Continued on next page...*

*Continued from previous page...*

| Chain | Residue | Modelled | Actual | Comment        | Reference  |
|-------|---------|----------|--------|----------------|------------|
| B     | 19      | TYR      | -      | EXPRESSION TAG | UNP Q14108 |
| B     | 20      | ASP      | -      | EXPRESSION TAG | UNP Q14108 |
| B     | 21      | ILE      | -      | EXPRESSION TAG | UNP Q14108 |
| B     | 22      | PRO      | -      | EXPRESSION TAG | UNP Q14108 |
| B     | 23      | THR      | -      | EXPRESSION TAG | UNP Q14108 |
| B     | 24      | THR      | -      | EXPRESSION TAG | UNP Q14108 |
| B     | 25      | GLU      | -      | EXPRESSION TAG | UNP Q14108 |
| B     | 26      | ASN      | -      | EXPRESSION TAG | UNP Q14108 |
| B     | 27      | LEU      | -      | EXPRESSION TAG | UNP Q14108 |
| B     | 28      | TYR      | -      | EXPRESSION TAG | UNP Q14108 |
| B     | 29      | PHE      | -      | EXPRESSION TAG | UNP Q14108 |
| B     | 30      | GLN      | -      | EXPRESSION TAG | UNP Q14108 |
| B     | 31      | GLY      | -      | EXPRESSION TAG | UNP Q14108 |
| B     | 32      | ALA      | -      | EXPRESSION TAG | UNP Q14108 |
| B     | 33      | MET      | -      | EXPRESSION TAG | UNP Q14108 |
| B     | 34      | ASP      | -      | EXPRESSION TAG | UNP Q14108 |
| E     | 8       | ALA      | -      | EXPRESSION TAG | UNP Q14108 |
| E     | 9       | ALA      | -      | EXPRESSION TAG | UNP Q14108 |
| E     | 10      | PRO      | -      | EXPRESSION TAG | UNP Q14108 |
| E     | 11      | GLU      | -      | EXPRESSION TAG | UNP Q14108 |
| E     | 12      | HIS      | -      | EXPRESSION TAG | UNP Q14108 |
| E     | 13      | HIS      | -      | EXPRESSION TAG | UNP Q14108 |
| E     | 14      | HIS      | -      | EXPRESSION TAG | UNP Q14108 |
| E     | 15      | HIS      | -      | EXPRESSION TAG | UNP Q14108 |
| E     | 16      | HIS      | -      | EXPRESSION TAG | UNP Q14108 |
| E     | 17      | HIS      | -      | EXPRESSION TAG | UNP Q14108 |
| E     | 18      | ASP      | -      | EXPRESSION TAG | UNP Q14108 |
| E     | 19      | TYR      | -      | EXPRESSION TAG | UNP Q14108 |
| E     | 20      | ASP      | -      | EXPRESSION TAG | UNP Q14108 |
| E     | 21      | ILE      | -      | EXPRESSION TAG | UNP Q14108 |
| E     | 22      | PRO      | -      | EXPRESSION TAG | UNP Q14108 |
| E     | 23      | THR      | -      | EXPRESSION TAG | UNP Q14108 |
| E     | 24      | THR      | -      | EXPRESSION TAG | UNP Q14108 |
| E     | 25      | GLU      | -      | EXPRESSION TAG | UNP Q14108 |
| E     | 26      | ASN      | -      | EXPRESSION TAG | UNP Q14108 |
| E     | 27      | LEU      | -      | EXPRESSION TAG | UNP Q14108 |
| E     | 28      | TYR      | -      | EXPRESSION TAG | UNP Q14108 |
| E     | 29      | PHE      | -      | EXPRESSION TAG | UNP Q14108 |
| E     | 30      | GLN      | -      | EXPRESSION TAG | UNP Q14108 |
| E     | 31      | GLY      | -      | EXPRESSION TAG | UNP Q14108 |
| E     | 32      | ALA      | -      | EXPRESSION TAG | UNP Q14108 |
| E     | 33      | MET      | -      | EXPRESSION TAG | UNP Q14108 |

*Continued on next page...*

*Continued from previous page...*

| Chain | Residue | Modelled | Actual | Comment        | Reference  |
|-------|---------|----------|--------|----------------|------------|
| E     | 34      | ASP      | -      | EXPRESSION TAG | UNP Q14108 |

- Molecule 10 is a polymer of unknown type called SUGAR (5-MER).

| Mol | Chain | Residues | Atoms |    |   |    | ZeroOcc | AltConf |
|-----|-------|----------|-------|----|---|----|---------|---------|
| 10  | F     | 5        | Total | C  | N | O  | 0       | 0       |
|     |       |          | 61    | 34 | 2 | 25 |         |         |

There are 27 discrepancies between the modelled and reference sequences:

| Chain | Residue | Modelled | Actual | Comment        | Reference  |
|-------|---------|----------|--------|----------------|------------|
| F     | 8       | ALA      | -      | EXPRESSION TAG | UNP Q14108 |
| F     | 9       | ALA      | -      | EXPRESSION TAG | UNP Q14108 |
| F     | 10      | PRO      | -      | EXPRESSION TAG | UNP Q14108 |
| F     | 11      | GLU      | -      | EXPRESSION TAG | UNP Q14108 |
| F     | 12      | HIS      | -      | EXPRESSION TAG | UNP Q14108 |
| F     | 13      | HIS      | -      | EXPRESSION TAG | UNP Q14108 |
| F     | 14      | HIS      | -      | EXPRESSION TAG | UNP Q14108 |
| F     | 15      | HIS      | -      | EXPRESSION TAG | UNP Q14108 |
| F     | 16      | HIS      | -      | EXPRESSION TAG | UNP Q14108 |
| F     | 17      | HIS      | -      | EXPRESSION TAG | UNP Q14108 |
| F     | 18      | ASP      | -      | EXPRESSION TAG | UNP Q14108 |
| F     | 19      | TYR      | -      | EXPRESSION TAG | UNP Q14108 |
| F     | 20      | ASP      | -      | EXPRESSION TAG | UNP Q14108 |
| F     | 21      | ILE      | -      | EXPRESSION TAG | UNP Q14108 |
| F     | 22      | PRO      | -      | EXPRESSION TAG | UNP Q14108 |
| F     | 23      | THR      | -      | EXPRESSION TAG | UNP Q14108 |
| F     | 24      | THR      | -      | EXPRESSION TAG | UNP Q14108 |
| F     | 25      | GLU      | -      | EXPRESSION TAG | UNP Q14108 |
| F     | 26      | ASN      | -      | EXPRESSION TAG | UNP Q14108 |
| F     | 27      | LEU      | -      | EXPRESSION TAG | UNP Q14108 |
| F     | 28      | TYR      | -      | EXPRESSION TAG | UNP Q14108 |
| F     | 29      | PHE      | -      | EXPRESSION TAG | UNP Q14108 |
| F     | 30      | GLN      | -      | EXPRESSION TAG | UNP Q14108 |
| F     | 31      | GLY      | -      | EXPRESSION TAG | UNP Q14108 |
| F     | 32      | ALA      | -      | EXPRESSION TAG | UNP Q14108 |
| F     | 33      | MET      | -      | EXPRESSION TAG | UNP Q14108 |
| F     | 34      | ASP      | -      | EXPRESSION TAG | UNP Q14108 |

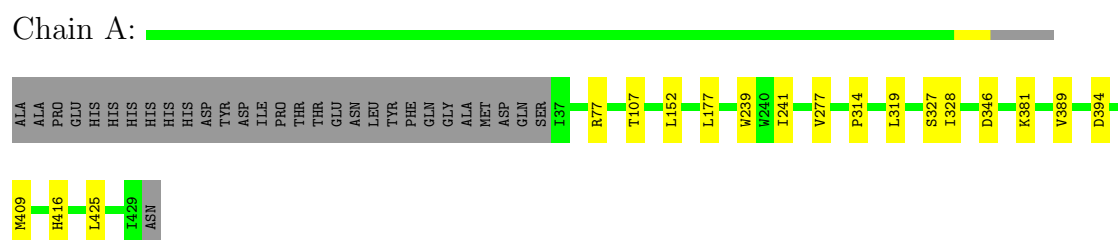


### 3 Residue-property plots

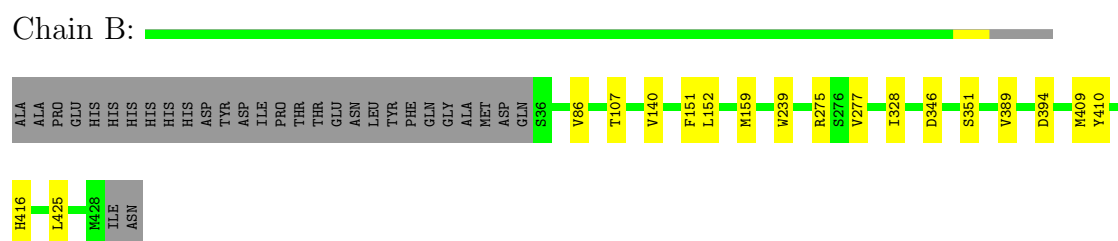
These plots are drawn for all protein, RNA and DNA chains in the entry. The first graphic for a chain summarises the proportions of errors displayed in the second graphic. The second graphic shows the sequence view annotated by issues in geometry and electron density. Residues are color-coded according to the number of geometric quality criteria for which they contain at least one outlier: green = 0, yellow = 1, orange = 2 and red = 3 or more. A red dot above a residue indicates a poor fit to the electron density ( $RSRZ > 2$ ). Stretches of 2 or more consecutive residues without any outlier are shown as a green connector. Residues present in the sample, but not in the model, are shown in grey.

Note EDS failed to run properly.

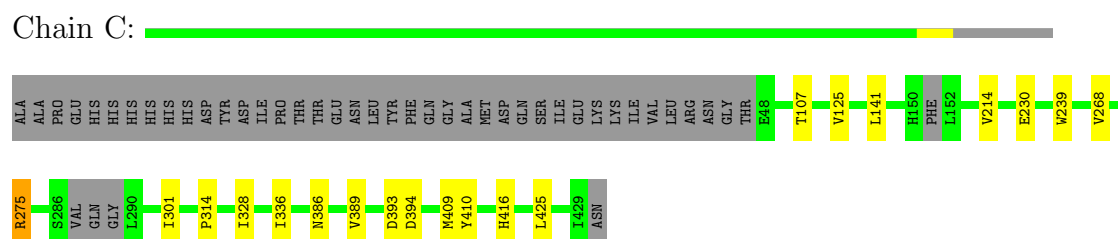
- Molecule 1: Lysosome membrane protein 2



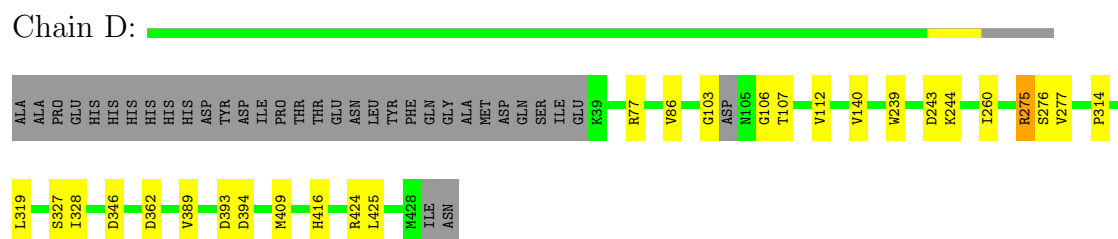
- Molecule 1: Lysosome membrane protein 2



- Molecule 1: Lysosome membrane protein 2

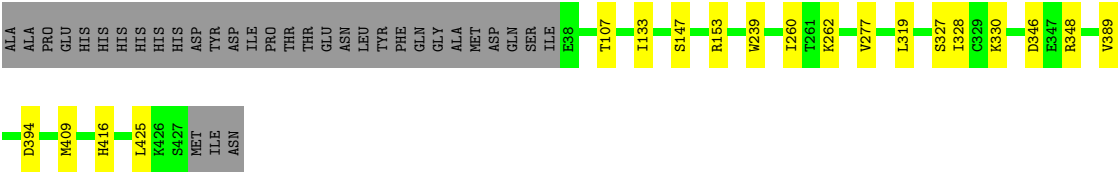


- Molecule 1: Lysosome membrane protein 2



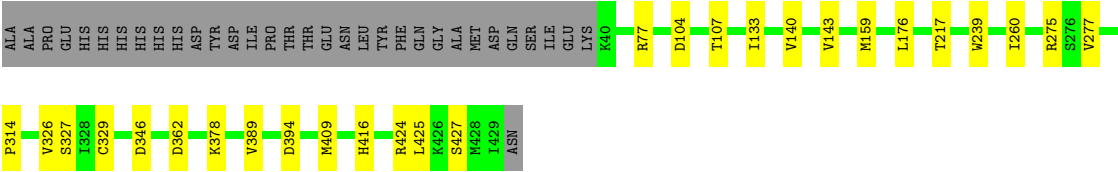
- Molecule 1: Lysosome membrane protein 2

Chain E: 



- Molecule 1: Lysosome membrane protein 2

Chain F: 



## 4 Data and refinement statistics

EDS failed to run properly - this section will therefore be incomplete.

| Property   | Value   | Source    |
|--|---|-----------|
| Space group  | P 1 21 1  | Depositor |
| Cell constants<br>a, b, c, $\alpha$ , $\beta$ , $\gamma$ | 101.77Å 115.98Å 145.08Å<br>90.00° 96.38° 90.00°             | Depositor |
| Resolution (Å)   | 34.64 – 3.00  | Depositor |
| % Data completeness<br>(in resolution range)             | 99.9 (34.64-3.00)   | Depositor |
| $R_{merge}$  | 0.10  | Depositor |
| $R_{sym}$  | (Not available)   | Depositor |
| $\langle I/\sigma(I) \rangle$ <sup>1</sup>               | 2.60 (at 3.01Å)   | Xtriage   |
| Refinement program                                       | BUSTER 2.10.0   | Depositor |
| R, $R_{free}$  | 0.198 , 0.232   | Depositor |
| Wilson B-factor (Å <sup>2</sup> )                        | 58.8  | Xtriage   |
| Anisotropy   | 0.321   | Xtriage   |
| Estimated twinning fraction                              | No twinning to report.                                      | Xtriage   |
| L-test for twinning                                      | $\langle  L  \rangle = 0.47$ , $\langle L^2 \rangle = 0.29$ | Xtriage   |
| Outliers   | 1 of 67190 reflections (0.001%)                             | Xtriage   |
| Total number of atoms                                    | 19810   | wwPDB-VP  |
| Average B, all atoms (Å <sup>2</sup> )                   | 84.0  | wwPDB-VP  |

Xtriage's analysis on translational NCS is as follows: *The largest off-origin peak in the Patterson function is 3.12% of the height of the origin peak. No significant pseudotranslation is detected.*

<sup>1</sup>Intensities estimated from amplitudes.

## 5 Model quality

### 5.1 Standard geometry

Bond lengths and bond angles in the following residue types are not validated in this section: PO4, PEG, NAG, BMA, MAN

The Z score for a bond length (or angle) is the number of standard deviations the observed value is removed from the expected value. A bond length (or angle) with  $|Z| > 5$  is considered an outlier worth inspection. RMSZ is the root-mean-square of all Z scores of the bond lengths (or angles).

| Mol | Chain | Bond lengths |         | Bond angles |                |
|-----|-------|--------------|---------|-------------|----------------|
|     |       | RMSZ         | # Z  >5 | RMSZ        | # Z  >5        |
| 1   | A     | 0.57         | 0/3174  | 0.77        | 0/4328         |
| 1   | B     | 0.56         | 0/3155  | 0.77        | 2/4307 (0.0%)  |
| 1   | C     | 0.53         | 0/3049  | 0.74        | 0/4158         |
| 1   | D     | 0.52         | 0/3171  | 0.73        | 0/4322         |
| 1   | E     | 0.59         | 0/3183  | 0.77        | 0/4338         |
| 1   | F     | 0.54         | 0/3182  | 0.75        | 0/4338         |
| All | All   | 0.55         | 0/18914 | 0.76        | 2/25791 (0.0%) |

There are no bond length outliers.

All (2) bond angle outliers are listed below:

| Mol | Chain | Res | Type | Atoms   | Z     | Observed(°) | Ideal(°) |
|-----|-------|-----|------|---------|-------|-------------|----------|
| 1   | B     | 152 | LEU  | CB-CA-C | -9.37 | 92.40       | 110.20   |
| 1   | B     | 151 | PHE  | CB-CA-C | -6.11 | 98.18       | 110.40   |

There are no chirality outliers.

There are no planarity outliers.

### 5.2 Close contacts

In the following table, the Non-H and H(model) columns list the number of non-hydrogen atoms and hydrogen atoms in the chain respectively. The H(added) column lists the number of hydrogens added by MolProbity. The Clashes column lists the number of clashes within the asymmetric unit, and the number in parentheses is this value normalized per 1000 atoms of the molecule in the chain. The Symm-Clashes column gives symmetry related clashes, in the same way as for the Clashes column.

| Mol | Chain | Non-H | H(model) | H(added) | Clashes | Symm-Clashes |
|-----|-------|-------|----------|----------|---------|--------------|
| 1   | A     | 3093  | 0        | 0        | 2       | 0            |

*Continued on next page...*

*Continued from previous page...*

| Mol | Chain | Non-H | H(model) | H(added) | Clashes | Symm-Clashes |
|-----|-------|-------|----------|----------|---------|--------------|
| 1   | B     | 3073  | 0        | 0        | 1       | 0            |
| 1   | C     | 2969  | 0        | 0        | 3       | 0            |
| 1   | D     | 3090  | 0        | 0        | 4       | 0            |
| 1   | E     | 3100  | 0        | 0        | 2       | 0            |
| 1   | F     | 3100  | 0        | 0        | 3       | 0            |
| 2   | A     | 50    | 0        | 0        | 0       | 0            |
| 2   | E     | 100   | 0        | 0        | 0       | 0            |
| 2   | F     | 50    | 0        | 0        | 0       | 0            |
| 3   | A     | 64    | 0        | 0        | 0       | 0            |
| 3   | D     | 64    | 0        | 0        | 1       | 0            |
| 4   | A     | 78    | 0        | 0        | 0       | 0            |
| 4   | B     | 39    | 0        | 0        | 0       | 0            |
| 4   | C     | 39    | 0        | 0        | 0       | 0            |
| 4   | D     | 39    | 0        | 0        | 1       | 0            |
| 4   | E     | 39    | 0        | 0        | 0       | 0            |
| 4   | F     | 78    | 0        | 0        | 0       | 0            |
| 5   | A     | 28    | 0        | 0        | 0       | 0            |
| 5   | B     | 28    | 0        | 0        | 0       | 0            |
| 5   | C     | 84    | 0        | 0        | 1       | 0            |
| 5   | D     | 84    | 0        | 0        | 0       | 0            |
| 5   | E     | 28    | 0        | 0        | 0       | 0            |
| 5   | F     | 28    | 0        | 0        | 0       | 0            |
| 6   | A     | 42    | 0        | 0        | 0       | 0            |
| 6   | B     | 56    | 0        | 0        | 0       | 0            |
| 6   | C     | 28    | 0        | 0        | 0       | 0            |
| 6   | D     | 14    | 0        | 0        | 0       | 0            |
| 6   | E     | 14    | 0        | 0        | 0       | 0            |
| 6   | F     | 56    | 0        | 0        | 0       | 0            |
| 7   | A     | 5     | 0        | 0        | 0       | 0            |
| 7   | B     | 5     | 0        | 0        | 0       | 0            |
| 7   | C     | 5     | 0        | 0        | 0       | 0            |
| 7   | D     | 5     | 0        | 0        | 0       | 0            |
| 7   | E     | 5     | 0        | 0        | 1       | 0            |
| 7   | F     | 5     | 0        | 0        | 0       | 0            |
| 8   | A     | 7     | 0        | 0        | 1       | 0            |
| 8   | F     | 7     | 0        | 0        | 0       | 0            |
| 9   | B     | 75    | 0        | 0        | 0       | 0            |
| 9   | E     | 75    | 0        | 0        | 0       | 0            |
| 10  | F     | 61    | 0        | 0        | 1       | 0            |
| All | All   | 19810 | 0        | 0        | 16      | 0            |

Clashscore is defined as the number of clashes calculated for the entry per 1000 atoms (including hydrogens) of the entry. The overall clashscore for this entry is 1.

The worst 5 of 16 close contacts within the same asymmetric unit are listed below.

| Atom-1          | Atom-2         | Distance(Å) | Clash(Å) |
|-----------------|----------------|-------------|----------|
| 1:F:326:VAL:CG2 | 1:F:329:CYS:SG | 2.86        | 0.64     |
| 1:D:103:GLY:O   | 1:D:106:GLY:N  | 2.36        | 0.59     |
| 1:D:275:ARG:NH1 | 1:D:276:SER:O  | 2.37        | 0.58     |
| 1:E:330:LYS:NZ  | 7:E:721:PO4:O3 | 2.38        | 0.56     |
| 1:A:241:ILE:CG2 | 1:B:351:SER:OG | 2.54        | 0.56     |

There are no symmetry-related clashes.

## 5.3 Torsion angles

### 5.3.1 Protein backbone ⓘ

In the following table, the Percentiles column shows the percent Ramachandran outliers of the chain as a percentile score with respect to all X-ray entries followed by that with respect to entries of similar resolution. The Analysed column shows the number of residues for which the backbone conformation was analysed, and the total number of residues.

| Mol | Chain | Analysed        | Favoured   | Allowed  | Outliers | Percentiles |     |
|-----|-------|-----------------|------------|----------|----------|-------------|-----|
| 1   | A     | 391/423 (92%)   | 372 (95%)  | 19 (5%)  | 0        | 100         | 100 |
| 1   | B     | 391/423 (92%)   | 369 (94%)  | 22 (6%)  | 0        | 100         | 100 |
| 1   | C     | 372/423 (88%)   | 358 (96%)  | 14 (4%)  | 0        | 100         | 100 |
| 1   | D     | 385/423 (91%)   | 366 (95%)  | 19 (5%)  | 0        | 100         | 100 |
| 1   | E     | 388/423 (92%)   | 369 (95%)  | 19 (5%)  | 0        | 100         | 100 |
| 1   | F     | 388/423 (92%)   | 371 (96%)  | 17 (4%)  | 0        | 100         | 100 |
| All | All   | 2315/2538 (91%) | 2205 (95%) | 110 (5%) | 0        | 100         | 100 |

There are no Ramachandran outliers to report.

### 5.3.2 Protein sidechains ⓘ

In the following table, the Percentiles column shows the percent sidechain outliers of the chain as a percentile score with respect to all X-ray entries followed by that with respect to entries of similar resolution. The Analysed column shows the number of residues for which the sidechain conformation was analysed, and the total number of residues.

| Mol | Chain | Analysed      | Rotameric | Outliers | Percentiles |    |
|-----|-------|---------------|-----------|----------|-------------|----|
| 1   | A     | 328/380 (86%) | 312 (95%) | 16 (5%)  | 35          | 78 |

*Continued on next page...*

*Continued from previous page...*

| Mol | Chain | Analysed        | Rotameric  | Outliers | Percentiles |    |
|-----|-------|-----------------|------------|----------|-------------|----|
| 1   | B     | 324/380 (85%)   | 309 (95%)  | 15 (5%)  | 37          | 80 |
| 1   | C     | 313/380 (82%)   | 298 (95%)  | 15 (5%)  | 35          | 79 |
| 1   | D     | 334/380 (88%)   | 313 (94%)  | 21 (6%)  | 25          | 66 |
| 1   | E     | 335/380 (88%)   | 319 (95%)  | 16 (5%)  | 35          | 79 |
| 1   | F     | 335/380 (88%)   | 313 (93%)  | 22 (7%)  | 24          | 64 |
| All | All   | 1969/2280 (86%) | 1864 (95%) | 105 (5%) | 32          | 74 |

5 of 105 residues with a non-rotameric sidechain are listed below:

| Mol | Chain | Res | Type |
|-----|-------|-----|------|
| 1   | D     | 86  | VAL  |
| 1   | D     | 328 | ILE  |
| 1   | F     | 327 | SER  |
| 1   | D     | 107 | THR  |
| 1   | D     | 275 | ARG  |

Some sidechains can be flipped to improve hydrogen bonding and reduce clashes. There are no such sidechains identified.

### 5.3.3 RNA ⓘ

There are no RNA chains in this entry.

## 5.4 Non-standard residues in protein, DNA, RNA chains ⓘ

There are no non-standard protein/DNA/RNA residues in this entry.

## 5.5 Carbohydrates ⓘ

87 carbohydrates are modelled in this entry.

In the following table, the Counts columns list the number of bonds (or angles) for which Mogul statistics could be retrieved, the number of bonds (or angles) that are observed in the model and the number of bonds (or angles) that are defined in the chemical component dictionary. The Link column lists molecule types, if any, to which the group is linked. The Z score for a bond length (or angle) is the number of standard deviations the observed value is removed from the expected value. A bond length (or angle) with  $|Z| > 2$  is considered an outlier worth inspection. RMSZ is the root-mean-square of all Z scores of the bond lengths (or angles).



| Mol | Type | Chain | Res | Link | Bond lengths |      |          | Bond angles |      |          |
|-----|------|-------|-----|------|--------------|------|----------|-------------|------|----------|
|     |      |       |     |      | Counts       | RMSZ | # Z  > 2 | Counts      | RMSZ | # Z  > 2 |
| 2   | NAG  | A     | 701 | 1,2  | 12,14,15     | 0.31 | 0        | 15,19,21    | 0.61 | 0        |
| 2   | NAG  | A     | 702 | 2    | 12,14,15     | 0.32 | 0        | 15,19,21    | 0.56 | 0        |
| 2   | BMA  | A     | 703 | 2    | 10,11,12     | 0.36 | 0        | 11,15,17    | 0.48 | 0        |
| 2   | MAN  | A     | 704 | 2    | 10,11,12     | 0.33 | 0        | 11,15,17    | 0.56 | 0        |
| 3   | NAG  | A     | 705 | 1,3  | 12,14,15     | 0.32 | 0        | 15,19,21    | 1.19 | 3 (20%)  |
| 3   | NAG  | A     | 706 | 3    | 12,14,15     | 0.36 | 0        | 15,19,21    | 0.95 | 0        |
| 3   | BMA  | A     | 707 | 3    | 10,11,12     | 0.33 | 0        | 11,15,17    | 0.56 | 0        |
| 3   | MAN  | A     | 708 | 3    | 10,11,12     | 0.38 | 0        | 11,15,17    | 0.68 | 0        |
| 3   | NAG  | A     | 709 | 3    | 12,14,15     | 0.17 | 0        | 15,19,21    | 0.79 | 0        |
| 4   | NAG  | A     | 710 | 1,4  | 12,14,15     | 0.36 | 0        | 15,19,21    | 0.69 | 0        |
| 4   | NAG  | A     | 711 | 4    | 12,14,15     | 0.34 | 0        | 15,19,21    | 0.61 | 0        |
| 4   | BMA  | A     | 712 | 4    | 10,11,12     | 0.36 | 0        | 11,15,17    | 0.51 | 0        |
| 5   | NAG  | A     | 713 | 1,5  | 12,14,15     | 0.31 | 0        | 15,19,21    | 0.56 | 0        |
| 5   | NAG  | A     | 714 | 5    | 12,14,15     | 0.24 | 0        | 15,19,21    | 0.86 | 0        |
| 4   | NAG  | A     | 716 | 1,4  | 12,14,15     | 0.36 | 0        | 15,19,21    | 0.53 | 0        |
| 4   | NAG  | A     | 717 | 4    | 12,14,15     | 0.32 | 0        | 15,19,21    | 0.60 | 0        |
| 4   | BMA  | A     | 718 | 4    | 10,11,12     | 0.34 | 0        | 11,15,17    | 0.42 | 0        |
| 5   | NAG  | B     | 701 | 1,5  | 12,14,15     | 0.38 | 0        | 15,19,21    | 0.67 | 0        |
| 5   | NAG  | B     | 702 | 5    | 12,14,15     | 0.30 | 0        | 15,19,21    | 0.56 | 0        |
| 9   | NAG  | B     | 703 | 9,1  | 12,14,15     | 0.32 | 0        | 15,19,21    | 0.41 | 0        |
| 9   | NAG  | B     | 704 | 9    | 12,14,15     | 0.36 | 0        | 15,19,21    | 0.75 | 0        |
| 9   | BMA  | B     | 705 | 9    | 10,11,12     | 0.36 | 0        | 11,15,17    | 0.49 | 0        |
| 9   | MAN  | B     | 706 | 9    | 10,11,12     | 0.35 | 0        | 11,15,17    | 0.60 | 0        |
| 9   | NAG  | B     | 707 | 9    | 12,14,15     | 0.28 | 0        | 15,19,21    | 0.79 | 0        |
| 9   | MAN  | B     | 708 | 9    | 10,11,12     | 0.35 | 0        | 11,15,17    | 0.50 | 0        |
| 4   | NAG  | B     | 712 | 1,4  | 12,14,15     | 0.36 | 0        | 15,19,21    | 0.61 | 0        |
| 4   | NAG  | B     | 713 | 4    | 12,14,15     | 0.36 | 0        | 15,19,21    | 0.64 | 0        |
| 4   | BMA  | B     | 714 | 4    | 10,11,12     | 0.36 | 0        | 11,15,17    | 0.69 | 0        |
| 5   | NAG  | C     | 701 | 1,5  | 12,14,15     | 0.27 | 0        | 15,19,21    | 0.45 | 0        |
| 5   | NAG  | C     | 702 | 5    | 12,14,15     | 0.29 | 0        | 15,19,21    | 0.40 | 0        |
| 4   | NAG  | C     | 703 | 1,4  | 12,14,15     | 0.29 | 0        | 15,19,21    | 0.41 | 0        |
| 4   | NAG  | C     | 704 | 4    | 12,14,15     | 0.40 | 0        | 15,19,21    | 0.75 | 0        |
| 4   | BMA  | C     | 705 | 4    | 10,11,12     | 0.34 | 0        | 11,15,17    | 0.34 | 0        |
| 5   | NAG  | C     | 706 | 1,5  | 12,14,15     | 0.32 | 0        | 15,19,21    | 0.60 | 0        |
| 5   | NAG  | C     | 707 | 5    | 12,14,15     | 0.30 | 0        | 15,19,21    | 0.39 | 0        |
| 5   | NAG  | C     | 709 | 1,5  | 12,14,15     | 0.35 | 0        | 15,19,21    | 0.58 | 0        |
| 5   | NAG  | C     | 710 | 5    | 12,14,15     | 0.25 | 0        | 15,19,21    | 0.55 | 0        |
| 5   | NAG  | D     | 701 | 1,5  | 12,14,15     | 0.33 | 0        | 15,19,21    | 0.52 | 0        |
| 5   | NAG  | D     | 702 | 5    | 12,14,15     | 0.33 | 0        | 15,19,21    | 0.61 | 0        |
| 3   | NAG  | D     | 703 | 1,3  | 12,14,15     | 0.27 | 0        | 15,19,21    | 0.68 | 0        |
| 3   | NAG  | D     | 704 | 3    | 12,14,15     | 0.36 | 0        | 15,19,21    | 0.61 | 0        |
| 3   | BMA  | D     | 705 | 3    | 10,11,12     | 0.33 | 0        | 11,15,17    | 0.31 | 0        |
| 3   | MAN  | D     | 706 | 3    | 10,11,12     | 0.37 | 0        | 11,15,17    | 0.49 | 0        |

| Mol | Type | Chain | Res | Link | Bond lengths |      |          | Bond angles |      |          |
|-----|------|-------|-----|------|--------------|------|----------|-------------|------|----------|
|     |      |       |     |      | Counts       | RMSZ | # Z  > 2 | Counts      | RMSZ | # Z  > 2 |
| 3   | NAG  | D     | 707 | 3    | 12,14,15     | 0.19 | 0        | 15,19,21    | 0.82 | 0        |
| 4   | NAG  | D     | 708 | 1,4  | 12,14,15     | 0.31 | 0        | 15,19,21    | 0.66 | 1 (6%)   |
| 4   | NAG  | D     | 709 | 4    | 12,14,15     | 0.34 | 0        | 15,19,21    | 0.50 | 0        |
| 4   | BMA  | D     | 710 | 4    | 10,11,12     | 0.37 | 0        | 11,15,17    | 0.41 | 0        |
| 5   | NAG  | D     | 711 | 1,5  | 12,14,15     | 0.30 | 0        | 15,19,21    | 0.46 | 0        |
| 5   | NAG  | D     | 712 | 5    | 12,14,15     | 0.25 | 0        | 15,19,21    | 0.36 | 0        |
| 5   | NAG  | D     | 713 | 1,5  | 12,14,15     | 0.33 | 0        | 15,19,21    | 0.63 | 0        |
| 5   | NAG  | D     | 714 | 5    | 12,14,15     | 0.22 | 0        | 15,19,21    | 0.59 | 0        |
| 2   | NAG  | E     | 701 | 1,2  | 12,14,15     | 0.30 | 0        | 15,19,21    | 0.55 | 0        |
| 2   | NAG  | E     | 702 | 2    | 12,14,15     | 0.32 | 0        | 15,19,21    | 0.93 | 1 (6%)   |
| 2   | BMA  | E     | 703 | 2    | 10,11,12     | 0.44 | 0        | 11,15,17    | 1.08 | 2 (18%)  |
| 2   | MAN  | E     | 704 | 2    | 10,11,12     | 0.35 | 0        | 11,15,17    | 0.81 | 0        |
| 9   | NAG  | E     | 705 | 9,1  | 12,14,15     | 0.29 | 0        | 15,19,21    | 0.43 | 0        |
| 9   | NAG  | E     | 706 | 9    | 12,14,15     | 0.35 | 0        | 15,19,21    | 0.60 | 0        |
| 9   | BMA  | E     | 707 | 9    | 10,11,12     | 0.33 | 0        | 11,15,17    | 0.53 | 0        |
| 9   | MAN  | E     | 708 | 9    | 10,11,12     | 0.36 | 0        | 11,15,17    | 0.46 | 0        |
| 9   | NAG  | E     | 709 | 9    | 12,14,15     | 0.22 | 0        | 15,19,21    | 0.71 | 0        |
| 9   | MAN  | E     | 710 | 9    | 10,11,12     | 0.37 | 0        | 11,15,17    | 0.54 | 0        |
| 5   | NAG  | E     | 711 | 1,5  | 12,14,15     | 0.31 | 0        | 15,19,21    | 0.65 | 0        |
| 5   | NAG  | E     | 712 | 5    | 12,14,15     | 0.37 | 0        | 15,19,21    | 0.79 | 0        |
| 4   | NAG  | E     | 713 | 1,4  | 12,14,15     | 0.34 | 0        | 15,19,21    | 1.01 | 1 (6%)   |
| 4   | NAG  | E     | 714 | 4    | 12,14,15     | 0.29 | 0        | 15,19,21    | 0.75 | 0        |
| 4   | BMA  | E     | 715 | 4    | 10,11,12     | 0.37 | 0        | 11,15,17    | 1.65 | 3 (27%)  |
| 2   | NAG  | E     | 716 | 1,2  | 12,14,15     | 0.30 | 0        | 15,19,21    | 0.51 | 0        |
| 2   | NAG  | E     | 717 | 2    | 12,14,15     | 0.27 | 0        | 15,19,21    | 0.47 | 0        |
| 2   | BMA  | E     | 718 | 2    | 10,11,12     | 0.34 | 0        | 11,15,17    | 0.46 | 0        |
| 2   | MAN  | E     | 719 | 2    | 10,11,12     | 0.34 | 0        | 11,15,17    | 0.99 | 0        |
| 2   | NAG  | F     | 701 | 1,2  | 12,14,15     | 0.36 | 0        | 15,19,21    | 0.55 | 0        |
| 2   | NAG  | F     | 702 | 2    | 12,14,15     | 0.39 | 0        | 15,19,21    | 0.53 | 0        |
| 2   | BMA  | F     | 703 | 2    | 10,11,12     | 0.39 | 0        | 11,15,17    | 1.08 | 2 (18%)  |
| 2   | MAN  | F     | 704 | 2    | 10,11,12     | 0.36 | 0        | 11,15,17    | 0.84 | 0        |
| 10  | NAG  | F     | 705 | 1,10 | 12,14,15     | 0.22 | 0        | 15,19,21    | 0.53 | 0        |
| 10  | NAG  | F     | 706 | 10   | 12,14,15     | 0.49 | 0        | 15,19,21    | 0.84 | 0        |
| 10  | BMA  | F     | 707 | 10   | 10,11,12     | 1.33 | 1 (10%)  | 11,15,17    | 1.11 | 1 (9%)   |
| 10  | MAN  | F     | 708 | 10   | 10,11,12     | 0.37 | 0        | 11,15,17    | 0.65 | 0        |
| 10  | MAN  | F     | 709 | 10   | 10,11,12     | 0.80 | 0        | 11,15,17    | 1.63 | 3 (27%)  |
| 4   | NAG  | F     | 710 | 1,4  | 12,14,15     | 0.28 | 0        | 15,19,21    | 0.55 | 0        |
| 4   | NAG  | F     | 711 | 4    | 12,14,15     | 0.31 | 0        | 15,19,21    | 0.56 | 0        |
| 4   | BMA  | F     | 712 | 4    | 10,11,12     | 0.37 | 0        | 11,15,17    | 0.29 | 0        |
| 5   | NAG  | F     | 713 | 1,5  | 12,14,15     | 0.28 | 0        | 15,19,21    | 0.49 | 0        |
| 5   | NAG  | F     | 714 | 5    | 12,14,15     | 0.24 | 0        | 15,19,21    | 0.57 | 0        |

| Mol | Type | Chain | Res | Link | Bond lengths |      |          | Bond angles |      |          |
|-----|------|-------|-----|------|--------------|------|----------|-------------|------|----------|
|     |      |       |     |      | Counts       | RMSZ | # Z  > 2 | Counts      | RMSZ | # Z  > 2 |
| 4   | NAG  | F     | 716 | 1,4  | 12,14,15     | 0.34 | 0        | 15,19,21    | 0.86 | 0        |
| 4   | NAG  | F     | 717 | 4    | 12,14,15     | 0.27 | 0        | 15,19,21    | 0.54 | 0        |
| 4   | BMA  | F     | 718 | 4    | 10,11,12     | 0.35 | 0        | 11,15,17    | 0.32 | 0        |

In the following table, the Chirals column lists the number of chiral outliers, the number of chiral centers analysed, the number of these observed in the model and the number defined in the chemical component dictionary. Similar counts are reported in the Torsion and Rings columns. '-' means no outliers of that kind were identified.

| Mol | Type | Chain | Res | Link | Chirals | Torsions  | Rings   |
|-----|------|-------|-----|------|---------|-----------|---------|
| 2   | NAG  | A     | 701 | 1,2  | -       | 0/6/23/26 | 0/1/1/1 |
| 2   | NAG  | A     | 702 | 2    | -       | 0/6/23/26 | 0/1/1/1 |
| 2   | BMA  | A     | 703 | 2    | -       | 0/2/19/22 | 0/1/1/1 |
| 2   | MAN  | A     | 704 | 2    | -       | 0/2/19/22 | 0/1/1/1 |
| 3   | NAG  | A     | 705 | 1,3  | -       | 0/6/23/26 | 0/1/1/1 |
| 3   | NAG  | A     | 706 | 3    | -       | 0/6/23/26 | 0/1/1/1 |
| 3   | BMA  | A     | 707 | 3    | -       | 0/2/19/22 | 0/1/1/1 |
| 3   | MAN  | A     | 708 | 3    | -       | 0/2/19/22 | 0/1/1/1 |
| 3   | NAG  | A     | 709 | 3    | -       | 0/6/23/26 | 0/1/1/1 |
| 4   | NAG  | A     | 710 | 1,4  | -       | 0/6/23/26 | 0/1/1/1 |
| 4   | NAG  | A     | 711 | 4    | -       | 0/6/23/26 | 0/1/1/1 |
| 4   | BMA  | A     | 712 | 4    | -       | 0/2/19/22 | 0/1/1/1 |
| 5   | NAG  | A     | 713 | 1,5  | -       | 0/6/23/26 | 0/1/1/1 |
| 5   | NAG  | A     | 714 | 5    | -       | 0/6/23/26 | 0/1/1/1 |
| 4   | NAG  | A     | 716 | 1,4  | -       | 0/6/23/26 | 0/1/1/1 |
| 4   | NAG  | A     | 717 | 4    | -       | 0/6/23/26 | 0/1/1/1 |
| 4   | BMA  | A     | 718 | 4    | -       | 0/2/19/22 | 0/1/1/1 |
| 5   | NAG  | B     | 701 | 1,5  | -       | 0/6/23/26 | 0/1/1/1 |
| 5   | NAG  | B     | 702 | 5    | -       | 0/6/23/26 | 0/1/1/1 |
| 9   | NAG  | B     | 703 | 9,1  | -       | 0/6/23/26 | 0/1/1/1 |
| 9   | NAG  | B     | 704 | 9    | -       | 0/6/23/26 | 0/1/1/1 |
| 9   | BMA  | B     | 705 | 9    | -       | 0/2/19/22 | 0/1/1/1 |
| 9   | MAN  | B     | 706 | 9    | -       | 0/2/19/22 | 0/1/1/1 |
| 9   | NAG  | B     | 707 | 9    | -       | 0/6/23/26 | 0/1/1/1 |
| 9   | MAN  | B     | 708 | 9    | -       | 0/2/19/22 | 0/1/1/1 |
| 4   | NAG  | B     | 712 | 1,4  | -       | 0/6/23/26 | 0/1/1/1 |
| 4   | NAG  | B     | 713 | 4    | -       | 0/6/23/26 | 0/1/1/1 |
| 4   | BMA  | B     | 714 | 4    | -       | 0/2/19/22 | 0/1/1/1 |
| 5   | NAG  | C     | 701 | 1,5  | -       | 0/6/23/26 | 0/1/1/1 |
| 5   | NAG  | C     | 702 | 5    | -       | 0/6/23/26 | 0/1/1/1 |
| 4   | NAG  | C     | 703 | 1,4  | -       | 0/6/23/26 | 0/1/1/1 |
| 4   | NAG  | C     | 704 | 4    | -       | 0/6/23/26 | 0/1/1/1 |
| 4   | BMA  | C     | 705 | 4    | -       | 0/2/19/22 | 0/1/1/1 |

*Continued on next page...*

*Continued from previous page...*

| Mol | Type | Chain | Res | Link | Chirals | Torsions  | Rings   |
|-----|------|-------|-----|------|---------|-----------|---------|
| 5   | NAG  | C     | 706 | 1,5  | -       | 0/6/23/26 | 0/1/1/1 |
| 5   | NAG  | C     | 707 | 5    | -       | 0/6/23/26 | 0/1/1/1 |
| 5   | NAG  | C     | 709 | 1,5  | -       | 0/6/23/26 | 0/1/1/1 |
| 5   | NAG  | C     | 710 | 5    | -       | 0/6/23/26 | 1/1/1/1 |
| 5   | NAG  | D     | 701 | 1,5  | -       | 0/6/23/26 | 0/1/1/1 |
| 5   | NAG  | D     | 702 | 5    | -       | 0/6/23/26 | 0/1/1/1 |
| 3   | NAG  | D     | 703 | 1,3  | -       | 0/6/23/26 | 0/1/1/1 |
| 3   | NAG  | D     | 704 | 3    | -       | 0/6/23/26 | 0/1/1/1 |
| 3   | BMA  | D     | 705 | 3    | -       | 0/2/19/22 | 0/1/1/1 |
| 3   | MAN  | D     | 706 | 3    | -       | 0/2/19/22 | 0/1/1/1 |
| 3   | NAG  | D     | 707 | 3    | -       | 0/6/23/26 | 0/1/1/1 |
| 4   | NAG  | D     | 708 | 1,4  | -       | 0/6/23/26 | 0/1/1/1 |
| 4   | NAG  | D     | 709 | 4    | -       | 0/6/23/26 | 0/1/1/1 |
| 4   | BMA  | D     | 710 | 4    | -       | 0/2/19/22 | 0/1/1/1 |
| 5   | NAG  | D     | 711 | 1,5  | -       | 0/6/23/26 | 0/1/1/1 |
| 5   | NAG  | D     | 712 | 5    | -       | 0/6/23/26 | 0/1/1/1 |
| 5   | NAG  | D     | 713 | 1,5  | -       | 0/6/23/26 | 0/1/1/1 |
| 5   | NAG  | D     | 714 | 5    | -       | 0/6/23/26 | 0/1/1/1 |
| 2   | NAG  | E     | 701 | 1,2  | -       | 0/6/23/26 | 0/1/1/1 |
| 2   | NAG  | E     | 702 | 2    | -       | 0/6/23/26 | 0/1/1/1 |
| 2   | BMA  | E     | 703 | 2    | -       | 0/2/19/22 | 0/1/1/1 |
| 2   | MAN  | E     | 704 | 2    | -       | 0/2/19/22 | 0/1/1/1 |
| 9   | NAG  | E     | 705 | 9,1  | -       | 0/6/23/26 | 0/1/1/1 |
| 9   | NAG  | E     | 706 | 9    | -       | 0/6/23/26 | 0/1/1/1 |
| 9   | BMA  | E     | 707 | 9    | -       | 0/2/19/22 | 0/1/1/1 |
| 9   | MAN  | E     | 708 | 9    | -       | 0/2/19/22 | 0/1/1/1 |
| 9   | NAG  | E     | 709 | 9    | -       | 0/6/23/26 | 0/1/1/1 |
| 9   | MAN  | E     | 710 | 9    | -       | 0/2/19/22 | 0/1/1/1 |
| 5   | NAG  | E     | 711 | 1,5  | -       | 0/6/23/26 | 0/1/1/1 |
| 5   | NAG  | E     | 712 | 5    | -       | 0/6/23/26 | 0/1/1/1 |
| 4   | NAG  | E     | 713 | 1,4  | -       | 0/6/23/26 | 0/1/1/1 |
| 4   | NAG  | E     | 714 | 4    | -       | 0/6/23/26 | 1/1/1/1 |
| 4   | BMA  | E     | 715 | 4    | -       | 0/2/19/22 | 0/1/1/1 |
| 2   | NAG  | E     | 716 | 1,2  | -       | 0/6/23/26 | 0/1/1/1 |
| 2   | NAG  | E     | 717 | 2    | -       | 0/6/23/26 | 0/1/1/1 |
| 2   | BMA  | E     | 718 | 2    | -       | 0/2/19/22 | 0/1/1/1 |
| 2   | MAN  | E     | 719 | 2    | -       | 0/2/19/22 | 0/1/1/1 |
| 2   | NAG  | F     | 701 | 1,2  | -       | 0/6/23/26 | 0/1/1/1 |
| 2   | NAG  | F     | 702 | 2    | -       | 0/6/23/26 | 0/1/1/1 |
| 2   | BMA  | F     | 703 | 2    | -       | 0/2/19/22 | 0/1/1/1 |
| 2   | MAN  | F     | 704 | 2    | -       | 0/2/19/22 | 0/1/1/1 |
| 10  | NAG  | F     | 705 | 1,10 | -       | 0/6/23/26 | 0/1/1/1 |

*Continued on next page...*

*Continued from previous page...*

| Mol | Type | Chain | Res | Link | Chirals | Torsions  | Rings   |
|-----|------|-------|-----|------|---------|-----------|---------|
| 10  | NAG  | F     | 706 | 10   | -       | 0/6/23/26 | 0/1/1/1 |
| 10  | BMA  | F     | 707 | 10   | -       | 0/2/19/22 | 0/1/1/1 |
| 10  | MAN  | F     | 708 | 10   | -       | 0/2/19/22 | 0/1/1/1 |
| 10  | MAN  | F     | 709 | 10   | -       | 0/2/19/22 | 0/1/1/1 |
| 4   | NAG  | F     | 710 | 1,4  | -       | 0/6/23/26 | 0/1/1/1 |
| 4   | NAG  | F     | 711 | 4    | -       | 0/6/23/26 | 0/1/1/1 |
| 4   | BMA  | F     | 712 | 4    | -       | 0/2/19/22 | 0/1/1/1 |
| 5   | NAG  | F     | 713 | 1,5  | -       | 0/6/23/26 | 0/1/1/1 |
| 5   | NAG  | F     | 714 | 5    | -       | 0/6/23/26 | 1/1/1/1 |
| 4   | NAG  | F     | 716 | 1,4  | -       | 0/6/23/26 | 0/1/1/1 |
| 4   | NAG  | F     | 717 | 4    | -       | 0/6/23/26 | 0/1/1/1 |
| 4   | BMA  | F     | 718 | 4    | -       | 0/2/19/22 | 0/1/1/1 |

All (1) bond length outliers are listed below:

| Mol | Chain | Res | Type | Atoms | Z     | Observed(Å) | Ideal(Å) |
|-----|-------|-----|------|-------|-------|-------------|----------|
| 10  | F     | 707 | BMA  | O6-C6 | -4.05 | 1.24        | 1.42     |

The worst 5 of 17 bond angle outliers are listed below:

| Mol | Chain | Res | Type | Atoms    | Z     | Observed(°) | Ideal(°) |
|-----|-------|-----|------|----------|-------|-------------|----------|
| 4   | E     | 715 | BMA  | C3-C4-C5 | 3.34  | 116.18      | 110.20   |
| 10  | F     | 709 | MAN  | O5-C5-C6 | 3.24  | 110.38      | 106.98   |
| 10  | F     | 707 | BMA  | O6-C6-C5 | 3.04  | 121.82      | 111.36   |
| 10  | F     | 709 | MAN  | C4-C3-C2 | 2.97  | 114.49      | 110.50   |
| 10  | F     | 709 | MAN  | O5-C5-C4 | -2.84 | 107.05      | 110.65   |

There are no chirality outliers.

There are no torsion outliers.

All (3) ring outliers are listed below:

| Mol | Chain | Res | Type | Atoms             |
|-----|-------|-----|------|-------------------|
| 4   | E     | 714 | NAG  | C1-C2-C3-C4-C5-O5 |
| 5   | F     | 714 | NAG  | C1-C2-C3-C4-C5-O5 |
| 5   | C     | 710 | NAG  | C1-C2-C3-C4-C5-O5 |

## 5.6 Ligand geometry ⓘ

23 ligands are modelled in this entry.

In the following table, the Counts columns list the number of bonds (or angles) for which Mogul

statistics could be retrieved, the number of bonds (or angles) that are observed in the model and the number of bonds (or angles) that are defined in the chemical component dictionary. The Link column lists molecule types, if any, to which the group is linked. The Z score for a bond length (or angle) is the number of standard deviations the observed value is removed from the expected value. A bond length (or angle) with  $|Z| > 2$  is considered an outlier worth inspection. RMSZ is the root-mean-square of all Z scores of the bond lengths (or angles).

| Mol | Type | Chain | Res | Link | Bond lengths |      |             | Bond angles |      |             |
|-----|------|-------|-----|------|--------------|------|-------------|-------------|------|-------------|
|     |      |       |     |      | Counts       | RMSZ | $\# Z  > 2$ | Counts      | RMSZ | $\# Z  > 2$ |
| 6   | NAG  | A     | 715 | 1    | 12,14,15     | 0.20 | 0           | 15,19,21    | 0.70 | 0           |
| 6   | NAG  | A     | 719 | 1    | 12,14,15     | 0.27 | 0           | 15,19,21    | 0.41 | 0           |
| 6   | NAG  | A     | 720 | 1    | 12,14,15     | 0.28 | 0           | 15,19,21    | 0.72 | 0           |
| 7   | PO4  | A     | 721 | -    | 4,4,4        | 0.83 | 0           | 6,6,6       | 0.31 | 0           |
| 8   | PEG  | A     | 722 | -    | 6,6,6        | 0.35 | 0           | 5,5,5       | 0.14 | 0           |
| 6   | NAG  | B     | 709 | 1    | 12,14,15     | 0.30 | 0           | 15,19,21    | 0.63 | 0           |
| 6   | NAG  | B     | 710 | 1    | 12,14,15     | 0.30 | 0           | 15,19,21    | 0.55 | 0           |
| 6   | NAG  | B     | 711 | 1    | 12,14,15     | 0.27 | 0           | 15,19,21    | 0.57 | 0           |
| 6   | NAG  | B     | 715 | 1    | 12,14,15     | 0.36 | 0           | 15,19,21    | 0.55 | 0           |
| 7   | PO4  | B     | 716 | -    | 4,4,4        | 0.99 | 0           | 6,6,6       | 0.33 | 0           |
| 6   | NAG  | C     | 708 | 1    | 12,14,15     | 0.21 | 0           | 15,19,21    | 0.39 | 0           |
| 6   | NAG  | C     | 711 | 1    | 12,14,15     | 0.33 | 0           | 15,19,21    | 0.69 | 0           |
| 7   | PO4  | C     | 712 | -    | 4,4,4        | 1.05 | 0           | 6,6,6       | 0.32 | 0           |
| 6   | NAG  | D     | 715 | 1    | 12,14,15     | 0.32 | 0           | 15,19,21    | 0.52 | 0           |
| 7   | PO4  | D     | 716 | -    | 4,4,4        | 1.06 | 0           | 6,6,6       | 0.31 | 0           |
| 6   | NAG  | E     | 720 | 1    | 12,14,15     | 0.28 | 0           | 15,19,21    | 0.46 | 0           |
| 7   | PO4  | E     | 721 | -    | 4,4,4        | 1.02 | 0           | 6,6,6       | 0.30 | 0           |
| 6   | NAG  | F     | 715 | 1    | 12,14,15     | 0.36 | 0           | 15,19,21    | 0.74 | 1 (6%)      |
| 6   | NAG  | F     | 719 | 1    | 12,14,15     | 0.24 | 0           | 15,19,21    | 0.38 | 0           |
| 6   | NAG  | F     | 720 | 1    | 12,14,15     | 0.25 | 0           | 15,19,21    | 0.43 | 0           |
| 6   | NAG  | F     | 721 | 1    | 12,14,15     | 0.36 | 0           | 15,19,21    | 0.52 | 0           |
| 7   | PO4  | F     | 722 | -    | 4,4,4        | 1.21 | 0           | 6,6,6       | 0.31 | 0           |
| 8   | PEG  | F     | 723 | -    | 6,6,6        | 0.22 | 0           | 5,5,5       | 0.17 | 0           |

In the following table, the Chirals column lists the number of chiral outliers, the number of chiral centers analysed, the number of these observed in the model and the number defined in the chemical component dictionary. Similar counts are reported in the Torsion and Rings columns. '-' means no outliers of that kind were identified.

| Mol | Type | Chain | Res | Link | Chirals | Torsions  | Rings   |
|-----|------|-------|-----|------|---------|-----------|---------|
| 6   | NAG  | A     | 715 | 1    | -       | 0/6/23/26 | 0/1/1/1 |
| 6   | NAG  | A     | 719 | 1    | -       | 0/6/23/26 | 0/1/1/1 |
| 6   | NAG  | A     | 720 | 1    | -       | 0/6/23/26 | 0/1/1/1 |
| 7   | PO4  | A     | 721 | -    | -       | 0/0/0/0   | 0/0/0/0 |
| 8   | PEG  | A     | 722 | -    | -       | 0/4/4/4   | 0/0/0/0 |
| 6   | NAG  | B     | 709 | 1    | -       | 0/6/23/26 | 0/1/1/1 |

*Continued on next page...*

*Continued from previous page...*

| Mol | Type | Chain | Res | Link | Chirals | Torsions  | Rings   |
|-----|------|-------|-----|------|---------|-----------|---------|
| 6   | NAG  | B     | 710 | 1    | -       | 0/6/23/26 | 0/1/1/1 |
| 6   | NAG  | B     | 711 | 1    | -       | 0/6/23/26 | 0/1/1/1 |
| 6   | NAG  | B     | 715 | 1    | -       | 0/6/23/26 | 0/1/1/1 |
| 7   | PO4  | B     | 716 | -    | -       | 0/0/0/0   | 0/0/0/0 |
| 6   | NAG  | C     | 708 | 1    | -       | 0/6/23/26 | 0/1/1/1 |
| 6   | NAG  | C     | 711 | 1    | -       | 0/6/23/26 | 0/1/1/1 |
| 7   | PO4  | C     | 712 | -    | -       | 0/0/0/0   | 0/0/0/0 |
| 6   | NAG  | D     | 715 | 1    | -       | 0/6/23/26 | 0/1/1/1 |
| 7   | PO4  | D     | 716 | -    | -       | 0/0/0/0   | 0/0/0/0 |
| 6   | NAG  | E     | 720 | 1    | -       | 0/6/23/26 | 0/1/1/1 |
| 7   | PO4  | E     | 721 | -    | -       | 0/0/0/0   | 0/0/0/0 |
| 6   | NAG  | F     | 715 | 1    | -       | 0/6/23/26 | 0/1/1/1 |
| 6   | NAG  | F     | 719 | 1    | -       | 0/6/23/26 | 0/1/1/1 |
| 6   | NAG  | F     | 720 | 1    | -       | 0/6/23/26 | 0/1/1/1 |
| 6   | NAG  | F     | 721 | 1    | -       | 0/6/23/26 | 0/1/1/1 |
| 7   | PO4  | F     | 722 | -    | -       | 0/0/0/0   | 0/0/0/0 |
| 8   | PEG  | F     | 723 | -    | -       | 0/4/4/4   | 0/0/0/0 |

There are no bond length outliers.

All (1) bond angle outliers are listed below:

| Mol | Chain | Res | Type | Atoms    | Z    | Observed(°) | Ideal(°) |
|-----|-------|-----|------|----------|------|-------------|----------|
| 6   | F     | 715 | NAG  | C2-N2-C7 | 2.13 | 126.66      | 123.09   |

There are no chirality outliers.

There are no torsion outliers.

There are no ring outliers.

## 5.7 Other polymers ⓘ

There are no such residues in this entry.

## 5.8 Polymer linkage issues

There are no chain breaks in this entry.



## 6 Fit of model and data ⓘ

### 6.1 Protein, DNA and RNA chains ⓘ

EDS failed to run properly - this section will therefore be empty.

### 6.2 Non-standard residues in protein, DNA, RNA chains ⓘ

EDS failed to run properly - this section will therefore be empty.

### 6.3 Carbohydrates ⓘ

EDS failed to run properly - this section will therefore be empty.

### 6.4 Ligands ⓘ

EDS failed to run properly - this section will therefore be empty.

### 6.5 Other polymers ⓘ

EDS failed to run properly - this section will therefore be empty.