



Full wwPDB X-ray Structure Validation Report

Feb 27, 2014 – 10:10 PM GMT

PDB ID : 1F8C
Title : Native Influenza Neuraminidase in Complex with 4-amino-2-deoxy-2,3-dehydro-N-neuraminic Acid
Authors : Smith, B.J.; Colman, P.M.; Von Itzstein, M.; Danyelec, B.; Varghese, J.N.
Deposited on : 2000-06-30
Resolution : 1.70 Å (reported)

This is a full wwPDB validation report for a publicly released PDB entry.
We welcome your comments at validation@mail.wwpdb.org
A user guide is available at <http://wwpdb.org/ValidationPDFNotes.html>

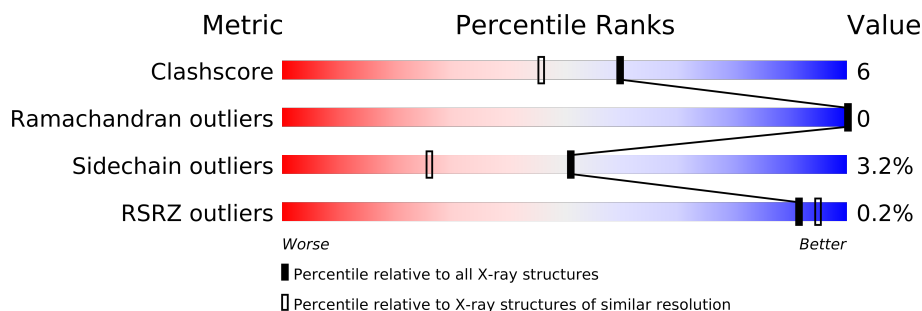
The following versions of software and data (see [references](#)) were used in the production of this report:

MolProbity : 4.02b-467
Mogul : 1.15 2013
Xtriage (Phenix) : dev-1323
EDS : stable22639
Percentile statistics : 21963
Refmac : 5.8.0049
CCP4 : 6.3.0 (Settle)
Ideal geometry (proteins) : Engh & Huber (2001)
Ideal geometry (DNA, RNA) : Parkinson et. al. (1996)
Validation Pipeline (wwPDB-VP) : stable22683

1 Overall quality at a glance

The reported resolution of this entry is 1.70 Å.

Percentile scores (ranging between 0-100) for global validation metrics of the entry are shown in the following graphic. The table shows the number of entries on which the scores are based.



Metric	Whole archive (#Entries)	Similar resolution (#Entries, resolution range(Å))
Clashscore	79885	2929 (1.70-1.70)
Ramachandran outliers	78287	2878 (1.70-1.70)
Sidechain outliers	78261	2878 (1.70-1.70)
RSRZ outliers	66119	2456 (1.70-1.70)

The table below summarises the geometric issues observed across the polymeric chains and their fit to the electron density. The red, orange, yellow and green segments on the lower bar indicate the fraction of residues that contain outliers for ≥ 3 , 2, 1 and 0 types of geometric quality criteria. The upper red bar (where present) indicates the fraction of residues that have poor fit to the electron density.

Mol	Chain	Length	Quality of chain
1	A	388	

2 Entry composition

There are 6 unique types of molecules in this entry. The entry contains 3583 atoms, of which 0 are hydrogen and 0 are deuterium.

In the tables below, the ZeroOcc column contains the number of atoms modelled with zero occupancy, the AltConf column contains the number of residues with at least one atom in alternate conformation and the Trace column contains the number of residues modelled with at most 2 atoms.

- Molecule 1 is a protein called NEURAMINIDASE.

Mol	Chain	Residues	Atoms					ZeroOcc	AltConf	Trace
			Total	C	N	O	S			
1	A	388	3069	1915	538	593	23	13	1	0

There are 3 discrepancies between the modelled and reference sequences:

Chain	Residue	Modelled	Actual	Comment	Reference
A	376	MET	ILE	CONFLICT	GB 324880
A	386	ASP	GLU	CONFLICT	GB 324880
A	387	LYS	ARG	CONFLICT	GB 324880

- Molecule 2 is a polymer of unknown type called SUGAR (7-MER).

Mol	Chain	Residues	Atoms				ZeroOcc	AltConf
			Total	C	N	O		
2	A	7	83	46	2	35	0	0

There are 3 discrepancies between the modelled and reference sequences:

Chain	Residue	Modelled	Actual	Comment	Reference
A	376	MET	ILE	CONFLICT	GB 324880
A	386	ASP	GLU	CONFLICT	GB 324880
A	387	LYS	ARG	CONFLICT	GB 324880

- Molecule 3 is SUGAR (N-ACETYL-D-GLUCOSAMINE) (three-letter code: NAG) (formula: $C_8H_{15}NO_6$).

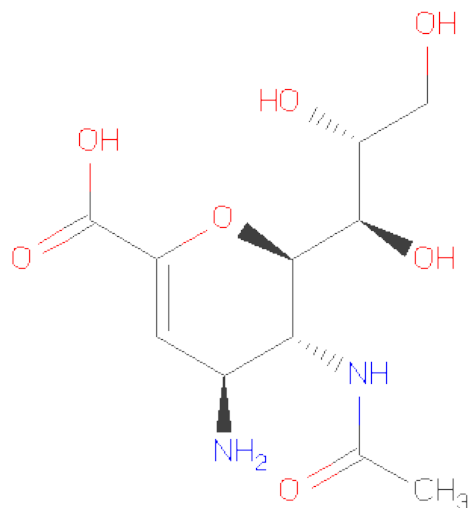


Mol	Chain	Residues	Atoms				ZeroOcc	AltConf
3	A	1	Total	C	N	O	0	0
			14	8	1	5		
3	A	1	Total	C	N	O	0	0
			14	8	1	5		
3	A	1	Total	C	N	O	0	0
			14	8	1	5		

- Molecule 4 is CALCIUM ION (three-letter code: CA) (formula: Ca).

Mol	Chain	Residues	Atoms		ZeroOcc	AltConf
4	A	2	Total	Ca	0	0
			2	2		

- Molecule 5 is 4-AMINO-2-DEOXY-2,3-DEHYDRO-N-NEURAMINICACID (three-letter code: 4AM) (formula: C₁₁H₁₈N₂O₇).



Mol	Chain	Residues	Atoms				ZeroOcc	AltConf
			Total	C	N	O		
5	A	1	20	11	2	7	0	0

- Molecule 6 is water.

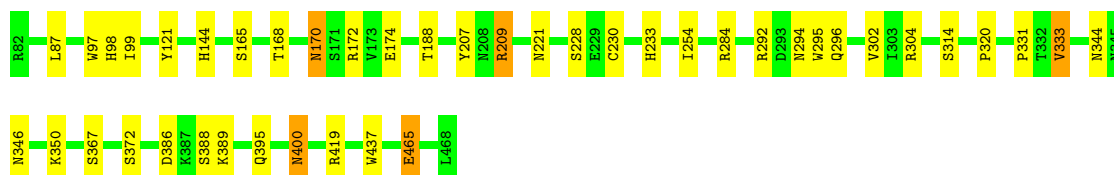
Mol	Chain	Residues	Atoms		ZeroOcc	AltConf
			Total	O		
6	A	367	367	367	0	0

3 Residue-property plots

These plots are drawn for all protein, RNA and DNA chains in the entry. The first graphic for a chain summarises the proportions of errors displayed in the second graphic. The second graphic shows the sequence view annotated by issues in geometry and electron density. Residues are color-coded according to the number of geometric quality criteria for which they contain at least one outlier: green = 0, yellow = 1, orange = 2 and red = 3 or more. A red dot above a residue indicates a poor fit to the electron density ($RSRZ > 2$). Stretches of 2 or more consecutive residues without any outlier are shown as a green connector. Residues present in the sample, but not in the model, are shown in grey.

• Molecule 1: NEURAMINIDASE

Chain A: 



4 Data and refinement statistics

Property	Value	Source
Space group	I 4 3 2	Depositor
Cell constants a, b, c, α , β , γ	180.98Å 180.98Å 180.98Å 90.00° 90.00° 90.00°	Depositor
Resolution (Å)	10.00 – 1.70 57.23 – 1.70	Depositor EDS
% Data completeness (in resolution range)	(Not available) (10.00-1.70) 86.1 (57.23-1.70)	Depositor EDS
R_{merge}	0.10	Depositor
R_{sym}	(Not available)	Depositor
$\langle I/\sigma(I) \rangle$ ¹	1.26 (at 1.70Å)	Xtriage
Refinement program	X-PLOR 3.851	Depositor
R, R_{free}	0.178 , 0.216 0.187 , (Not available)	Depositor DCC
R_{free} test set	No test flags present.	DCC
Wilson B-factor (Å ²)	17.1	Xtriage
Anisotropy	0.000	Xtriage
Bulk solvent k_{sol} (e/Å ³), B_{sol} (Å ²)	0.40 , 52.2	EDS
Estimated twinning fraction	No twinning to report.	Xtriage
L-test for twinning	$\langle L \rangle = 0.50$, $\langle L^2 \rangle = 0.34$	Xtriage
Outliers	0 of 47677 reflections	Xtriage
F_o, F_c correlation	0.96	EDS
Total number of atoms	3583	wwPDB-VP
Average B, all atoms (Å ²)	16.0	wwPDB-VP

Xtriage's analysis on translational NCS is as follows: *The largest off-origin peak in the Patterson function is 2.93% of the height of the origin peak. No significant pseudotranslation is detected.*

¹Intensities estimated from amplitudes.

5 Model quality ⓘ

5.1 Standard geometry ⓘ

Bond lengths and bond angles in the following residue types are not validated in this section: 4AM, CA, NAG, MAN

The Z score for a bond length (or angle) is the number of standard deviations the observed value is removed from the expected value. A bond length (or angle) with $|Z| > 5$ is considered an outlier worth inspection. RMSZ is the root-mean-square of all Z scores of the bond lengths (or angles).

Mol	Chain	Bond lengths		Bond angles	
		RMSZ	$\# Z > 5$	RMSZ	$\# Z > 5$
1	A	0.53	0/3156	0.76	0/4298

Chiral center outliers are detected by calculating the chiral volume of a chiral center and verifying if the center is modelled as a planar moiety or with the opposite hand. A planarity outlier is detected by checking planarity of atoms in a peptide group, atoms in a mainchain group or atoms of a sidechain that are expected to be planar.

Mol	Chain	#Chirality outliers	#Planarity outliers
2	A	1	0

There are no bond length outliers.

There are no bond angle outliers.

All (1) chirality outliers are listed below:

Mol	Chain	Res	Type	Atom
2	A	471	MAN	C1

There are no planarity outliers.

5.2 Close contacts ⓘ

In the following table, the Non-H and H(model) columns list the number of non-hydrogen atoms and hydrogen atoms in the chain respectively. The H(added) column lists the number of hydrogens added by MolProbity. The Clashes column lists the number of clashes within the asymmetric unit, and the number in parentheses is this value normalized per 1000 atoms of the molecule in the chain. The Symm-Clashes column gives symmetry related clashes, in the same way as for the Clashes column.

Mol	Chain	Non-H	H(model)	H(added)	Clashes	Symm-Clashes
1	A	3069	0	2894	33	0
2	A	83	0	70	0	0
3	A	42	0	39	4	0
4	A	2	0	0	0	0
5	A	20	0	17	0	0
6	A	367	0	0	3	0
All	All	3583	0	3020	36	0

Clashscore is defined as the number of clashes calculated for the entry per 1000 atoms (including hydrogens) of the entry. The overall clashscore for this entry is 6.

All (36) close contacts within the same asymmetric unit are listed below.

Atom-1	Atom-2	Distance(Å)	Clash(Å)
1:A:172:ARG:HD3	1:A:209:ARG:NH1	1.71	1.06
1:A:87:LEU:H	1:A:233:HIS:HD2	1.12	0.97
1:A:168:THR:H	1:A:170:ASN:HD21	1.19	0.91
1:A:87:LEU:H	1:A:233:HIS:CD2	2.00	0.79
1:A:172:ARG:HD3	1:A:209:ARG:HH12	1.47	0.77
1:A:292:ARG:HE	1:A:294:ASN:HD22	1.38	0.70
1:A:168:THR:H	1:A:170:ASN:ND2	1.89	0.68
1:A:98:HIS:HE1	1:A:419:ARG:HH21	1.40	0.67
1:A:97:TRP:H	1:A:395:GLN:HE22	1.43	0.67
1:A:292:ARG:HH11	1:A:294:ASN:ND2	1.96	0.64
1:A:98:HIS:CE1	1:A:419:ARG:HH21	2.15	0.63
1:A:174:GLU:OE2	1:A:209:ARG:NH1	2.34	0.59
1:A:292:ARG:HH11	1:A:294:ASN:HD21	1.51	0.59
1:A:228:SER:HB3	1:A:350:LYS:HE2	1.89	0.55
1:A:465:GLU:CD	1:A:465:GLU:H	2.10	0.54
1:A:320:PRO:HD2	1:A:388:SER:O	2.08	0.53
1:A:284:ARG:HH21	1:A:284:ARG:HG2	1.74	0.52
1:A:98:HIS:HD2	1:A:99:ILE:O	1.93	0.50
3:A:1086:NAG:O4	3:A:1087:NAG:N2	2.45	0.49
1:A:320:PRO:O	1:A:331:PRO:HD2	2.13	0.49
1:A:121:TYR:CG	1:A:228:SER:HA	2.49	0.48
1:A:188:THR:HG22	1:A:207:TYR:CZ	2.49	0.48
1:A:320:PRO:HG2	1:A:389:LYS:HE2	1.96	0.47
1:A:144:HIS:HD2	6:A:1183:HOH:O	1.97	0.47
3:A:1086:NAG:O4	3:A:1087:NAG:C2	2.62	0.47
1:A:344:ASN:HB3	6:A:1367:HOH:O	2.16	0.46
1:A:172:ARG:CD	1:A:209:ARG:NH1	2.60	0.46
1:A:302:VAL:O	1:A:314:SER:HA	2.17	0.44
1:A:170:ASN:HB3	6:A:1457:HOH:O	2.18	0.43
1:A:172:ARG:HD3	1:A:209:ARG:CZ	2.42	0.43

Continued on next page...

Continued from previous page...

Atom-1	Atom-2	Distance(Å)	Clash(Å)
1:A:437:TRP:CD1	3:A:1146:NAG:H82	2.54	0.43
1:A:367:SER:HB2	1:A:400:ASN:HD21	1.83	0.43
3:A:1086:NAG:C4	3:A:1087:NAG:C1	2.98	0.42
1:A:295:TRP:CG	1:A:296:GLN:HG3	2.54	0.42
1:A:346:ASN:N	1:A:346:ASN:ND2	2.68	0.40
1:A:333:VAL:HA	1:A:386:ASP:O	2.20	0.40

There are no symmetry-related clashes.

5.3 Torsion angles

5.3.1 Protein backbone ⓘ

In the following table, the Percentiles column shows the percent Ramachandran outliers of the chain as a percentile score with respect to all X-ray entries followed by that with respect to entries of similar resolution. The Analysed column shows the number of residues for which the backbone conformation was analysed, and the total number of residues.

Mol	Chain	Analysed	Favoured	Allowed	Outliers	Percentiles	
1	A	387/388 (100%)	367 (95%)	20 (5%)	0	100	100

There are no Ramachandran outliers to report.

5.3.2 Protein sidechains ⓘ

In the following table, the Percentiles column shows the percent sidechain outliers of the chain as a percentile score with respect to all X-ray entries followed by that with respect to entries of similar resolution. The Analysed column shows the number of residues for which the sidechain conformation was analysed, and the total number of residues.

Mol	Chain	Analysed	Rotameric	Outliers	Percentiles	
1	A	342/341 (100%)	331 (97%)	11 (3%)	51	26

All (11) residues with a non-rotameric sidechain are listed below:

Mol	Chain	Res	Type
1	A	165	SER
1	A	170	ASN
1	A	209	ARG
1	A	221	ASN

Continued on next page...

Continued from previous page...

Mol	Chain	Res	Type
1	A	230	CYS
1	A	254	ILE
1	A	304	ARG
1	A	333	VAL
1	A	372	SER
1	A	400	ASN
1	A	465	GLU

Some sidechains can be flipped to improve hydrogen bonding and reduce clashes. All (11) such sidechains are listed below:

Mol	Chain	Res	Type
1	A	95	ASN
1	A	98	HIS
1	A	144	HIS
1	A	170	ASN
1	A	221	ASN
1	A	233	HIS
1	A	294	ASN
1	A	346	ASN
1	A	392	GLN
1	A	395	GLN
1	A	400	ASN

5.3.3 RNA ⓘ

There are no RNA chains in this entry.

5.4 Non-standard residues in protein, DNA, RNA chains ⓘ

There are no non-standard protein/DNA/RNA residues in this entry.

5.5 Carbohydrates ⓘ

7 carbohydrates are modelled in this entry.

In the following table, the Counts columns list the number of bonds (or angles) for which Mogul statistics could be retrieved, the number of bonds (or angles) that are observed in the model and the number of bonds (or angles) that are defined in the chemical component dictionary. The Link column lists molecule types, if any, to which the group is linked. The Z score for a bond length (or angle) is the number of standard deviations the observed value is removed from the expected

value. A bond length (or angle) with $|Z| > 2$ is considered an outlier worth inspection. RMSZ is the root-mean-square of all Z scores of the bond lengths (or angles).

Mol	Type	Chain	Res	Link	Bond lengths			Bond angles		
					Counts	RMSZ	$\# Z > 2$	Counts	RMSZ	$\# Z > 2$
2	NAG	A	469	1,2	12,14,15	0.96	0	15,19,21	1.44	3 (20%)
2	NAG	A	470	2	12,14,15	0.93	1 (8%)	15,19,21	1.03	0
2	MAN	A	471	2	10,11,12	0.93	0	11,15,17	1.76	3 (27%)
2	MAN	A	472	2	10,11,12	1.20	2 (20%)	11,15,17	1.24	1 (9%)
2	MAN	A	473	2	10,11,12	1.30	2 (20%)	11,15,17	0.94	1 (9%)
2	MAN	A	474	2	10,11,12	1.53	1 (10%)	11,15,17	0.95	0
2	MAN	A	475	2	10,11,12	0.87	0	11,15,17	1.18	2 (18%)

In the following table, the Chirals column lists the number of chiral outliers, the number of chiral centers analysed, the number of these observed in the model and the number defined in the chemical component dictionary. Similar counts are reported in the Torsion and Rings columns. '-' means no outliers of that kind were identified.

Mol	Type	Chain	Res	Link	Chirals	Torsions	Rings
2	NAG	A	469	1,2	-	0/6/23/26	0/1/1/1
2	NAG	A	470	2	-	0/6/23/26	0/1/1/1
2	MAN	A	471	2	1/1/4/5	0/2/19/22	0/1/1/1
2	MAN	A	472	2	-	0/2/19/22	0/1/1/1
2	MAN	A	473	2	-	0/2/19/22	0/1/1/1
2	MAN	A	474	2	-	0/2/19/22	0/1/1/1
2	MAN	A	475	2	-	0/2/19/22	0/1/1/1

All (6) bond length outliers are listed below:

Mol	Chain	Res	Type	Atoms	Z	Observed(Å)	Ideal(Å)
2	A	474	MAN	C4-C5	3.07	1.59	1.53
2	A	473	MAN	C4-C5	2.99	1.59	1.53
2	A	472	MAN	C3-C2	2.55	1.58	1.52
2	A	472	MAN	C4-C3	2.25	1.58	1.52
2	A	470	NAG	C4-C3	2.20	1.58	1.52
2	A	473	MAN	C4-C3	2.11	1.58	1.52

All (10) bond angle outliers are listed below:

Mol	Chain	Res	Type	Atoms	Z	Observed(°)	Ideal(°)
2	A	469	NAG	C8-C7-N2	-2.86	110.52	116.11
2	A	471	MAN	O3-C3-C2	-2.83	104.75	109.94
2	A	471	MAN	C6-C5-C4	-2.70	106.47	113.00

Continued on next page...

Continued from previous page...

Mol	Chain	Res	Type	Atoms	Z	Observed(°)	Ideal(°)
2	A	472	MAN	O6-C6-C5	-2.65	102.24	111.36
2	A	469	NAG	O5-C5-C4	-2.30	107.74	110.65
2	A	469	NAG	C3-C2-N2	-2.29	108.27	111.76
2	A	475	MAN	O6-C6-C5	2.22	119.00	111.36
2	A	473	MAN	C6-C5-C4	2.02	117.88	113.00
2	A	471	MAN	C4-C3-C2	2.01	113.21	110.50
2	A	475	MAN	C6-C5-C4	2.01	117.85	113.00

All (1) chirality outliers are listed below:

Mol	Chain	Res	Type	Atom
2	A	471	MAN	C1

There are no torsion outliers.

There are no ring outliers.

5.6 Ligand geometry ⓘ

Of 6 ligands modelled in this entry, 2 are monoatomic - leaving 4 for Mogul analysis.

In the following table, the Counts columns list the number of bonds (or angles) for which Mogul statistics could be retrieved, the number of bonds (or angles) that are observed in the model and the number of bonds (or angles) that are defined in the chemical component dictionary. The Link column lists molecule types, if any, to which the group is linked. The Z score for a bond length (or angle) is the number of standard deviations the observed value is removed from the expected value. A bond length (or angle) with $|Z| > 2$ is considered an outlier worth inspection. RMSZ is the root-mean-square of all Z scores of the bond lengths (or angles).

Mol	Type	Chain	Res	Link	Bond lengths			Bond angles		
					Counts	RMSZ	# Z > 2	Counts	RMSZ	# Z > 2
3	NAG	A	1086	1,3	12,14,15	0.81	0	15,19,21	2.35	5 (33%)
3	NAG	A	1087	3	12,14,15	2.28	3 (25%)	15,19,21	2.96	4 (26%)
3	NAG	A	1146	1	12,14,15	1.39	1 (8%)	15,19,21	1.75	3 (20%)
5	4AM	A	4	-	20,20,20	1.74	4 (20%)	28,28,28	1.48	5 (17%)

In the following table, the Chirals column lists the number of chiral outliers, the number of chiral centers analysed, the number of these observed in the model and the number defined in the chemical component dictionary. Similar counts are reported in the Torsion and Rings columns. '-' means no outliers of that kind were identified.

Mol	Type	Chain	Res	Link	Chirals	Torsions	Rings
3	NAG	A	1086	1,3	-	0/6/23/26	0/1/1/1
3	NAG	A	1087	3	-	0/6/23/26	0/1/1/1
3	NAG	A	1146	1	-	0/6/23/26	0/1/1/1
5	4AM	A	4	-	-	0/18/34/34	0/1/1/1

All (8) bond length outliers are listed below:

Mol	Chain	Res	Type	Atoms	Z	Observed(Å)	Ideal(Å)
3	A	1087	NAG	C4-C5	5.46	1.65	1.53
5	A	4	4AM	C7-C6	4.51	1.58	1.52
3	A	1087	NAG	C4-C3	4.09	1.63	1.52
5	A	4	4AM	C2-C1	-3.42	1.39	1.48
3	A	1146	NAG	C4-C5	3.12	1.59	1.53
5	A	4	4AM	C3-C2	3.11	1.39	1.33
3	A	1087	NAG	C3-C2	2.34	1.57	1.52
5	A	4	4AM	C6-C5	2.19	1.56	1.53

All (17) bond angle outliers are listed below:

Mol	Chain	Res	Type	Atoms	Z	Observed(°)	Ideal(°)
3	A	1087	NAG	C3-C2-N2	7.62	123.36	111.76
3	A	1086	NAG	C6-C5-C4	-6.62	96.99	113.00
3	A	1087	NAG	C2-N2-C7	6.62	134.20	123.09
3	A	1146	NAG	C2-N2-C7	-4.51	115.51	123.09
5	A	4	4AM	O6-C2-C3	-3.95	119.21	124.33
3	A	1086	NAG	C3-C4-C5	3.61	116.65	110.20
5	A	4	4AM	C6-O6-C2	3.49	119.94	114.72
3	A	1087	NAG	C6-C5-C4	3.26	120.87	113.00
3	A	1146	NAG	C3-C2-N2	-3.04	107.13	111.76
3	A	1146	NAG	C3-C4-C5	-2.86	105.09	110.20
5	A	4	4AM	C3-C4-N4	-2.82	106.70	111.05
5	A	4	4AM	O6-C2-C1	2.57	116.95	111.88
3	A	1086	NAG	O6-C6-C5	-2.32	103.39	111.36
3	A	1086	NAG	O5-C5-C6	2.30	109.39	106.98
3	A	1086	NAG	O4-C4-C5	-2.23	103.42	109.28
3	A	1087	NAG	C4-C3-C2	-2.17	106.00	111.32
5	A	4	4AM	O1B-C1-C2	2.14	120.06	114.66

There are no chirality outliers.

There are no torsion outliers.

There are no ring outliers.

5.7 Other polymers ⓘ

There are no such residues in this entry.

5.8 Polymer linkage issues

There are no chain breaks in this entry.

6 Fit of model and data ⓘ

6.1 Protein, DNA and RNA chains ⓘ

In the following table, the column labelled ‘#RSRZ> 2’ contains the number (and percentage) of RSRZ outliers, followed by percent RSRZ outliers for the chain as percentile scores relative to all X-ray entries and entries of similar resolution. The OWAB column contains the minimum, median, 95th percentile and maximum values of the occupancy-weighted average B-factor per residue. The column labelled ‘Q< 0.9’ lists the number of (and percentage) of residues with an average occupancy less than 0.9.

Mol	Chain	Analysed	<RSRZ>	#RSRZ>2	OWAB(Å ²)	Q<0.9
1	A	388/388 (100%)	-0.38	0 100 100	10, 13, 22, 30	5 (1%)

There are no RSRZ outliers to report.

6.2 Non-standard residues in protein, DNA, RNA chains ⓘ

There are no non-standard protein/DNA/RNA residues in this entry.

6.3 Carbohydrates ⓘ

In the following table, the Atoms column lists the number of modelled atoms in the group and the number defined in the chemical component dictionary. LLDF column lists the quality of electron density of the group with respect to its neighbouring residues in protein, DNA or RNA chains. The B-factors column lists the minimum, median, 95th percentile and maximum values of B factors of atoms in the group. The column labelled ‘Q< 0.9’ lists the number of atoms with occupancy less than 0.9.

Mol	Type	Chain	Res	Atoms	RSR	LLDF	B-factors(Å ²)	Q<0.9
2	NAG	A	469	14/15	0.08	-	13,17,24,24	0
2	MAN	A	473	11/12	0.07	-	19,20,21,23	0
2	MAN	A	472	11/12	0.08	-	18,20,24,32	0
2	MAN	A	475	11/12	0.15	-	26,28,30,33	0
2	MAN	A	471	11/12	0.11	-	15,17,21,22	0
2	NAG	A	470	14/15	0.09	-	15,16,22,27	0
2	MAN	A	474	11/12	0.12	-	14,17,17,18	0

6.4 Ligands ⓘ

In the following table, the Atoms column lists the number of modelled atoms in the group and the number defined in the chemical component dictionary. LLDF column lists the quality of electron

density of the group with respect to its neighbouring residues in protein, DNA or RNA chains. The B-factors column lists the minimum, median, 95th percentile and maximum values of B factors of atoms in the group. The column labelled 'Q < 0.9' lists the number of atoms with occupancy less than 0.9.

Mol	Type	Chain	Res	Atoms	RSR	LLDF	B-factors(Å ²)	Q<0.9
3	NAG	A	1146	14/15	0.16	-	33,39,42,45	0
4	CA	A	998	1/1	0.54	-	3,3,3,3	1
3	NAG	A	1086	14/15	0.15	-	22,25,32,34	0
3	NAG	A	1087	14/15	0.25	-	64,70,73,74	0
4	CA	A	999	1/1	0.03	-	16,16,16,16	0
5	4AM	A	4	20/20	0.05	-	12,14,16,17	0

6.5 Other polymers ⓘ

There are no such residues in this entry.