



Full wwPDB X-ray Structure Validation Report

Feb 27, 2014 – 03:09 AM GMT

PDB ID : 4F9O
Title : Crystal Structure of recombinant human Hexokinase type I with 2-deoxy-Glucose 6-Phosphate
Authors : Shen, L.; Honzatko, R.B.
Deposited on : 2012-05-19
Resolution : 2.65 Å(reported)

This is a full wwPDB validation report for a publicly released PDB entry.
We welcome your comments at validation@mail.wwpdb.org
A user guide is available at <http://wwpdb.org/ValidationPDFNotes.html>

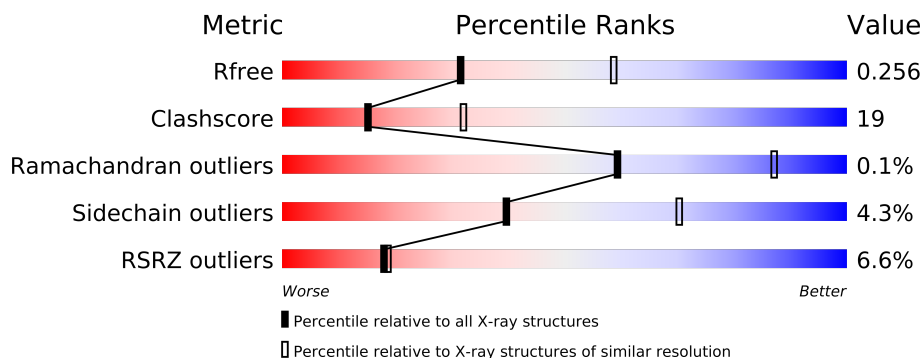
The following versions of software and data (see [references](#)) were used in the production of this report:

MolProbity : 4.02b-467
Mogul : 1.15 2013
Xtriage (Phenix) : dev-1323
EDS : stable22639
Percentile statistics : 21963
Refmac : 5.8.0049
CCP4 : 6.3.0 (Settle)
Ideal geometry (proteins) : Engh & Huber (2001)
Ideal geometry (DNA, RNA) : Parkinson et. al. (1996)
Validation Pipeline (wwPDB-VP) : stable22683

1 Overall quality at a glance

The reported resolution of this entry is 2.65 Å.

Percentile scores (ranging between 0-100) for global validation metrics of the entry are shown in the following graphic. The table shows the number of entries on which the scores are based.



Metric	Whole archive (#Entries)	Similar resolution (#Entries, resolution range(Å))
R_{free}	66092	2232 (2.70-2.62)
Clashscore	79885	2700 (2.70-2.62)
Ramachandran outliers	78287	2657 (2.70-2.62)
Sidechain outliers	78261	2657 (2.70-2.62)
RSRZ outliers	66119	2234 (2.70-2.62)

The table below summarises the geometric issues observed across the polymeric chains and their fit to the electron density. The red, orange, yellow and green segments on the lower bar indicate the fraction of residues that contain outliers for ≥ 3 , 2, 1 and 0 types of geometric quality criteria. The upper red bar (where present) indicates the fraction of residues that have poor fit to the electron density.

Mol	Chain	Length	Quality of chain
1	A	914	
1	B	914	

The following table lists non-polymeric compounds that are outliers for geometric or electron-density-fit criteria:

Mol	Type	Chain	Res	Geometry	Electron density
2	BGC	B	1001	-	X
5	CIT	B	1007	-	X

2 Entry composition i

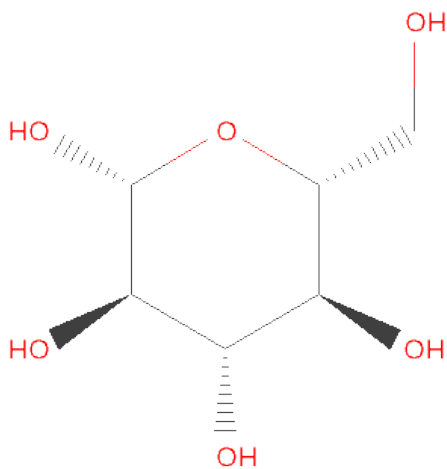
There are 6 unique types of molecules in this entry. The entry contains 14495 atoms, of which 0 are hydrogen and 0 are deuterium.

In the tables below, the ZeroOcc column contains the number of atoms modelled with zero occupancy, the AltConf column contains the number of residues with at least one atom in alternate conformation and the Trace column contains the number of residues modelled with at most 2 atoms.

- Molecule 1 is a protein called Hexokinase-1.

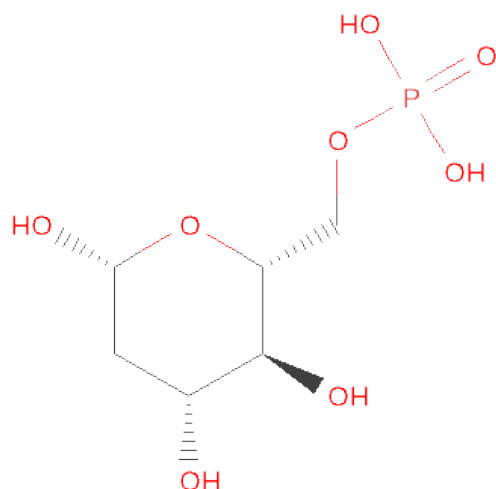
Mol	Chain	Residues	Atoms					ZeroOcc	AltConf	Trace
1	A	899	Total	C	N	O	S	0	0	0
			7033	4407	1240	1333	53			
1	B	899	Total	C	N	O	S	0	0	0
			7033	4407	1240	1333	53			

- Molecule 2 is SUGAR (BETA-D-GLUCOSE) (three-letter code: BGC) (formula: C₆H₁₂O₆).



Mol	Chain	Residues	Atoms			ZeroOcc	AltConf
2	A	1	Total	C	O	0	0
			12	6	6		
2	A	1	Total	C	O	0	0
			12	6	6		
2	B	1	Total	C	O	0	0
			12	6	6		
2	B	1	Total	C	O	0	0
			12	6	6		

- Molecule 3 is SUGAR (2-DEOXY-6-O-PHOSPHONO-BETA-D-ARABINO-HEXOPYRAN OSE) (three-letter code: 0NZ) (formula: C₆H₁₃O₈P).

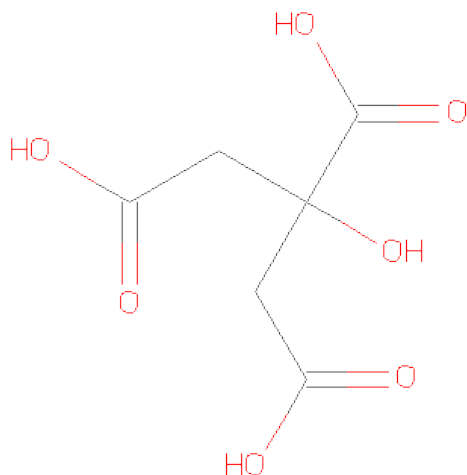


Mol	Chain	Residues	Atoms				ZeroOcc	AltConf
3	A	1	Total	C	O	P	0	0
			15	6	8	1		
3	A	1	Total	C	O	P	0	0
			15	6	8	1		
3	B	1	Total	C	O	P	0	0
			15	6	8	1		
3	B	1	Total	C	O	P	0	0
			15	6	8	1		

- Molecule 4 is SODIUM ION (three-letter code: NA) (formula: Na).

Mol	Chain	Residues	Atoms		ZeroOcc	AltConf
4	B	2	Total	Na	0	0
			2	2		
4	A	2	Total	Na	0	0
			2	2		

- Molecule 5 is CITRIC ACID (three-letter code: CIT) (formula: C₆H₈O₇).



Mol	Chain	Residues	Atoms			ZeroOcc	AltConf
5	B	1	Total	C	O	0	0
			13	6	7		

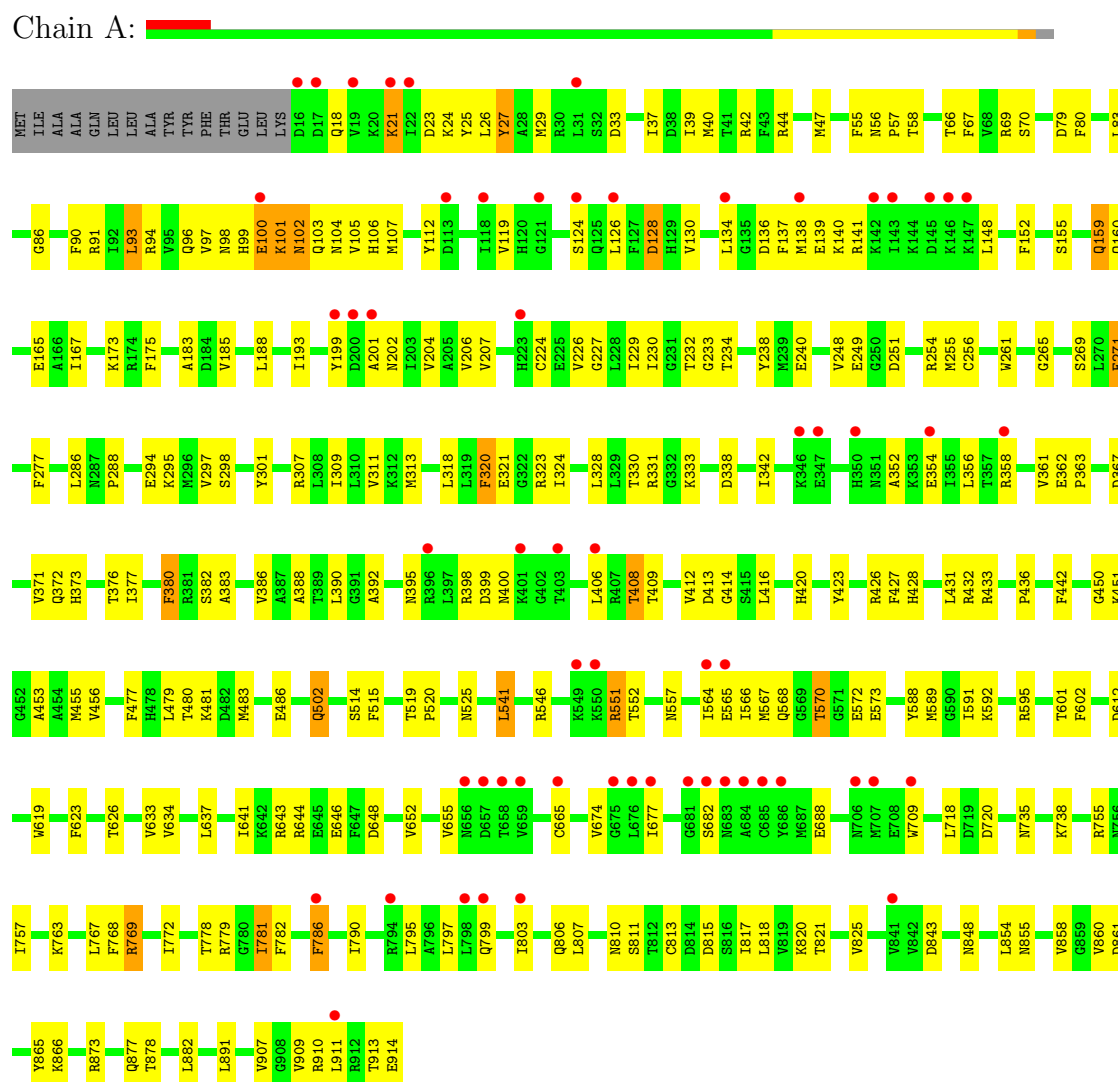
- Molecule 6 is water.

Mol	Chain	Residues	Atoms		ZeroOcc	AltConf
6	A	155	Total	O	0	0
			155	155		
6	B	149	Total	O	0	0
			149	149		

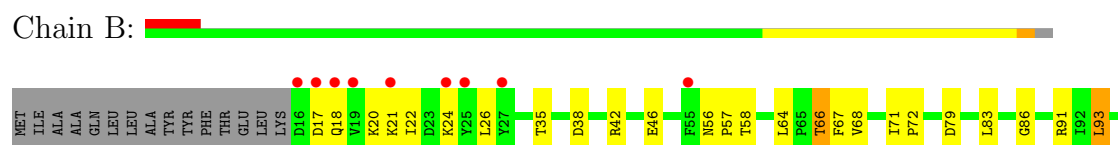
3 Residue-property plots

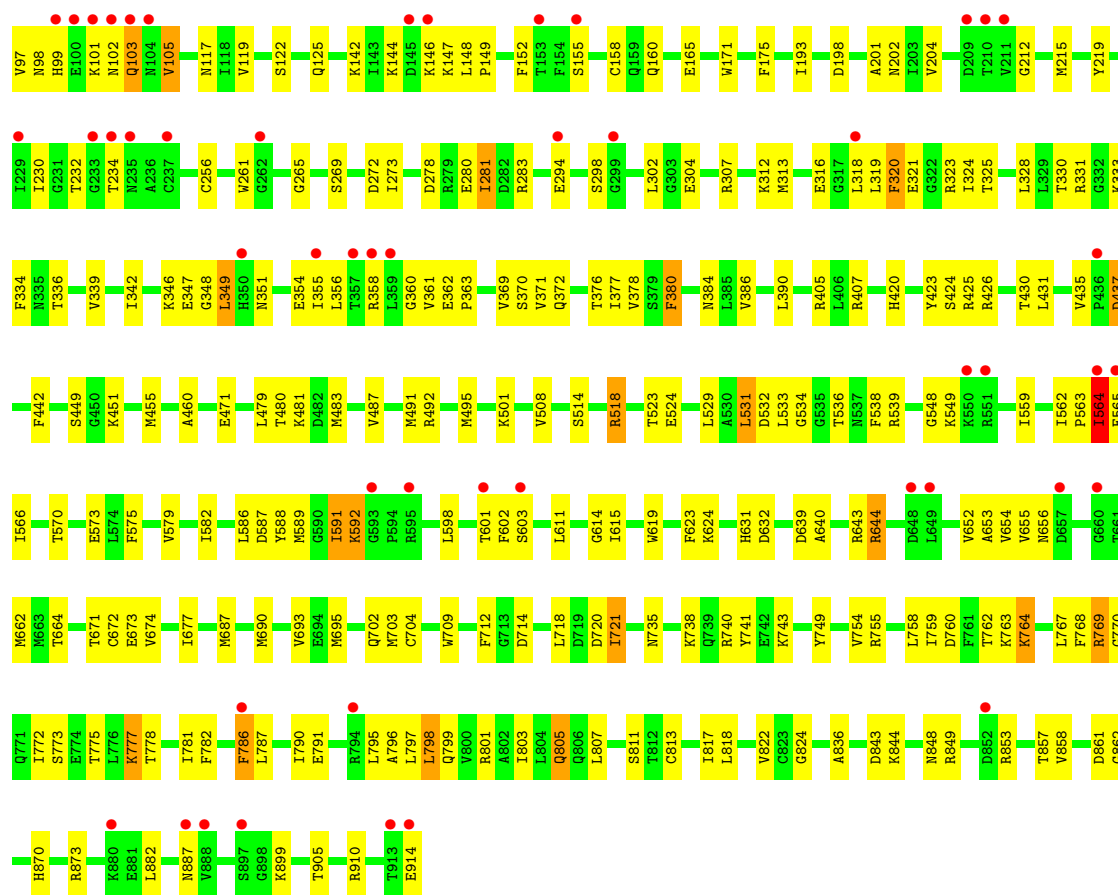
These plots are drawn for all protein, RNA and DNA chains in the entry. The first graphic for a chain summarises the proportions of errors displayed in the second graphic. The second graphic shows the sequence view annotated by issues in geometry and electron density. Residues are color-coded according to the number of geometric quality criteria for which they contain at least one outlier: green = 0, yellow = 1, orange = 2 and red = 3 or more. A red dot above a residue indicates a poor fit to the electron density ($RSRZ > 2$). Stretches of 2 or more consecutive residues without any outlier are shown as a green connector. Residues present in the sample, but not in the model, are shown in grey.

• Molecule 1: Hexokinase-1



• Molecule 1: Hexokinase-1





4 Data and refinement statistics

Property	Value	Source
Space group	P 1 21 1	Depositor
Cell constants a, b, c, α , β , γ	82.98Å 122.09Å 120.35Å 90.00° 92.97° 90.00°	Depositor
Resolution (Å)	35.36 – 2.65 35.36 – 2.65	Depositor EDS
% Data completeness (in resolution range)	98.9 (35.36-2.65) 98.9 (35.36-2.65)	Depositor EDS
R_{merge}	0.09	Depositor
R_{sym}	(Not available)	Depositor
$\langle I/\sigma(I) \rangle$ ¹	2.94 (at 2.65Å)	Xtriage
Refinement program	REFMAC 5.5.0066	Depositor
R, R_{free}	0.240 , 0.258 0.237 , 0.256	Depositor DCC
R_{free} test set	3466 reflections (5.30%)	DCC
Wilson B-factor (Å ²)	51.5	Xtriage
Anisotropy	0.048	Xtriage
Bulk solvent k_{sol} (e/Å ³), B_{sol} (Å ²)	0.32 , 32.5	EDS
Estimated twinning fraction	0.002 for -h,-l,-k 0.000 for -h,l,k 0.015 for h,-k,-l	Xtriage
L-test for twinning	$\langle L \rangle = 0.52$, $\langle L^2 \rangle = 0.35$	Xtriage
Outliers	0 of 68857 reflections	Xtriage
F_o, F_c correlation	0.93	EDS
Total number of atoms	14495	wwPDB-VP
Average B, all atoms (Å ²)	55.0	wwPDB-VP

Xtriage's analysis on translational NCS is as follows: *The largest off-origin peak in the Patterson function is 3.15% of the height of the origin peak. No significant pseudotranslation is detected.*

¹Intensities estimated from amplitudes.

5 Model quality

5.1 Standard geometry

Bond lengths and bond angles in the following residue types are not validated in this section: BGC, NA, 0NZ, CIT

The Z score for a bond length (or angle) is the number of standard deviations the observed value is removed from the expected value. A bond length (or angle) with $|Z| > 5$ is considered an outlier worth inspection. RMSZ is the root-mean-square of all Z scores of the bond lengths (or angles).

Mol	Chain	Bond lengths		Bond angles	
		RMSZ	$\# Z > 5$	RMSZ	$\# Z > 5$
1	A	0.28	0/7139	0.46	0/9606
1	B	0.29	0/7139	0.48	0/9606
All	All	0.28	0/14278	0.47	0/19212

There are no bond length outliers.

There are no bond angle outliers.

There are no chirality outliers.

There are no planarity outliers.

5.2 Close contacts

In the following table, the Non-H and H(model) columns list the number of non-hydrogen atoms and hydrogen atoms in the chain respectively. The H(added) column lists the number of hydrogens added by MolProbity. The Clashes column lists the number of clashes within the asymmetric unit, and the number in parentheses is this value normalized per 1000 atoms of the molecule in the chain. The Symm-Clashes column gives symmetry related clashes, in the same way as for the Clashes column.

Mol	Chain	Non-H	H(model)	H(added)	Clashes	Symm-Clashes
1	A	7033	0	7089	258	0
1	B	7033	0	7090	287	0
2	A	24	0	24	0	0
2	B	24	0	24	0	0
3	A	30	0	22	1	0
3	B	30	0	22	1	0
4	A	2	0	0	0	0
4	B	2	0	0	0	0
5	B	13	0	5	4	0
6	A	155	0	0	4	0

Continued on next page...

Continued from previous page...

Mol	Chain	Non-H	H(model)	H(added)	Clashes	Symm-Clashes
6	B	149	0	0	10	0
All	All	14495	0	14276	539	0

Clashscore is defined as the number of clashes calculated for the entry per 1000 atoms (including hydrogens) of the entry. The overall clashscore for this entry is 19.

All (539) close contacts within the same asymmetric unit are listed below.

Atom-1	Atom-2	Distance(Å)	Clash(Å)
1:A:566:ILE:CG1	1:A:566:ILE:CD1	1.84	1.53
1:A:97:VAL:CG2	1:A:105:VAL:HA	1.47	1.41
1:B:319:LEU:HB2	1:B:320:PHE:CE1	1.67	1.29
1:A:79:ASP:OD1	1:A:96:GLN:HG2	1.32	1.28
1:B:319:LEU:CB	1:B:320:PHE:CE1	2.18	1.25
1:B:98:ASN:OD1	1:B:101:LYS:HG2	1.32	1.25
1:A:320:PHE:O	1:A:323:ARG:HG3	1.37	1.24
1:B:319:LEU:C	1:B:320:PHE:HD1	1.41	1.21
1:A:94:ARG:NE	1:A:96:GLN:OE1	1.73	1.21
1:A:323:ARG:NH2	1:A:362:GLU:O	1.75	1.20
1:B:775:THR:O	1:B:781:ILE:HD11	1.39	1.19
1:B:775:THR:O	1:B:781:ILE:CD1	1.94	1.15
1:B:480:THR:H	1:B:483:MET:HE3	1.02	1.10
1:A:97:VAL:HG21	1:A:105:VAL:HA	1.35	1.08
1:A:565:GLU:O	1:A:568:GLN:O	1.72	1.07
1:A:323:ARG:CZ	1:A:362:GLU:HB2	1.83	1.07
1:A:97:VAL:HG22	1:A:105:VAL:HA	1.27	1.07
1:A:480:THR:H	1:A:483:MET:HE3	0.97	1.07
1:B:319:LEU:C	1:B:320:PHE:CD1	2.27	1.07
1:A:323:ARG:NH2	1:A:362:GLU:HB2	1.67	1.06
1:A:480:THR:N	1:A:483:MET:HE3	1.69	1.06
1:A:570:THR:HG23	1:A:573:GLU:OE2	1.52	1.06
1:A:101:LYS:N	1:A:101:LYS:HD3	1.70	1.04
1:A:323:ARG:HH21	1:A:362:GLU:CA	1.70	1.04
1:B:319:LEU:HB2	1:B:320:PHE:HE1	1.04	1.02
1:B:319:LEU:HB3	1:B:320:PHE:CE1	1.90	1.02
1:A:323:ARG:NH2	1:A:362:GLU:C	2.12	1.01
1:B:853:ARG:HH11	1:B:853:ARG:HB3	1.25	1.01
1:A:101:LYS:N	1:A:101:LYS:CD	2.22	1.00
1:A:66:THR:HG22	1:A:256:CYS:O	1.62	0.99
1:A:323:ARG:NH2	1:A:362:GLU:CA	2.25	0.99
1:A:592:LYS:NZ	1:A:646:GLU:OE1	1.94	0.99
1:A:323:ARG:HH21	1:A:362:GLU:N	1.60	0.98
1:A:101:LYS:HD3	1:A:101:LYS:H	1.28	0.97

Continued on next page...

Continued from previous page...

Atom-1	Atom-2	Distance(Å)	Clash(Å)
1:A:97:VAL:CG2	1:A:105:VAL:CA	2.43	0.95
1:A:79:ASP:OD1	1:A:96:GLN:CG	2.13	0.95
1:B:319:LEU:CB	1:B:320:PHE:CD1	2.47	0.95
1:A:323:ARG:NH2	1:A:362:GLU:CB	2.29	0.95
1:B:98:ASN:CG	1:B:101:LYS:HG2	1.86	0.95
1:B:319:LEU:CB	1:B:320:PHE:HE1	1.66	0.94
1:A:94:ARG:CZ	1:A:96:GLN:OE1	2.15	0.94
1:A:361:VAL:O	1:A:363:PRO:HD3	1.68	0.93
1:B:480:THR:N	1:B:483:MET:HE3	1.84	0.93
1:A:570:THR:CG2	1:A:573:GLU:OE2	2.16	0.92
1:A:100:GLU:HA	1:A:100:GLU:OE1	1.68	0.91
1:B:98:ASN:OD1	1:B:101:LYS:CG	2.18	0.91
1:B:797:LEU:HD11	1:B:817:ILE:HD11	1.54	0.90
1:B:853:ARG:HB3	1:B:853:ARG:NH1	1.85	0.89
1:B:431:LEU:HD22	1:B:442:PHE:HZ	1.37	0.88
1:B:319:LEU:HB2	1:B:320:PHE:CD1	2.09	0.87
1:B:66:THR:HG21	1:B:256:CYS:HB3	1.54	0.87
1:B:346:LYS:HG3	1:B:347:GLU:OE1	1.76	0.86
1:B:346:LYS:HB2	1:B:347:GLU:OE1	1.76	0.85
1:B:346:LYS:CG	1:B:347:GLU:OE1	2.24	0.84
1:B:320:PHE:HD2	1:B:361:VAL:HB	1.42	0.84
1:B:356:LEU:HD11	1:B:371:VAL:HG21	1.58	0.84
1:A:98:ASN:OD1	1:A:100:GLU:HB2	1.77	0.83
1:B:346:LYS:CB	1:B:347:GLU:OE1	2.27	0.83
1:B:320:PHE:N	1:B:320:PHE:CD1	2.44	0.82
1:B:420:HIS:HD2	1:B:423:TYR:H	1.23	0.82
1:B:98:ASN:CG	1:B:101:LYS:CG	2.47	0.82
1:B:764:LYS:HE2	6:B:1148:HOH:O	1.80	0.82
1:B:320:PHE:CE2	1:B:361:VAL:HG21	2.15	0.81
1:A:66:THR:HG21	1:A:256:CYS:HB3	1.63	0.81
1:B:103:GLN:HA	1:B:103:GLN:OE1	1.78	0.81
1:B:531:LEU:HD21	1:B:582:ILE:HD11	1.62	0.81
1:B:426:ARG:HH21	5:B:1007:CIT:H41	1.46	0.80
1:A:763:LYS:HG3	1:A:772:ILE:HD11	1.63	0.80
1:B:98:ASN:ND2	1:B:101:LYS:HE3	1.98	0.79
1:A:97:VAL:HG22	1:A:105:VAL:CA	2.10	0.78
1:A:665:CYS:SG	1:A:891:LEU:HD23	2.23	0.78
1:B:479:LEU:HA	1:B:483:MET:HE1	1.66	0.78
1:B:320:PHE:HE2	1:B:361:VAL:HG21	1.48	0.78
1:A:480:THR:HG23	1:A:483:MET:HE2	1.67	0.77
1:B:539:ARG:CZ	1:B:559:ILE:HD11	2.14	0.76
1:B:798:LEU:HB2	6:B:1114:HOH:O	1.85	0.76

Continued on next page...

Continued from previous page...

Atom-1	Atom-2	Distance(Å)	Clash(Å)
1:B:98:ASN:HD21	1:B:101:LYS:HE3	1.51	0.76
1:A:93:LEU:HD22	1:A:450:GLY:HA3	1.67	0.76
1:B:768:PHE:HA	1:B:769:ARG:HH21	1.49	0.76
1:B:587:ASP:OD1	1:B:592:LYS:HD2	1.85	0.76
1:A:234:THR:HG22	1:A:294:GLU:HG3	1.68	0.75
1:B:405:ARG:HB3	1:B:405:ARG:NH1	2.01	0.75
1:A:323:ARG:HH21	1:A:362:GLU:H	1.33	0.75
1:A:354:GLU:O	1:A:358:ARG:HG3	1.85	0.75
1:A:570:THR:HG23	1:A:573:GLU:CD	2.06	0.74
1:A:767:LEU:HG	1:A:818:LEU:HD23	1.70	0.74
1:A:160:GLN:HG2	1:A:165:GLU:O	1.88	0.74
1:B:405:ARG:HB3	1:B:405:ARG:HH11	1.53	0.74
1:B:562:ILE:O	1:B:562:ILE:HG22	1.86	0.74
1:B:687:MET:HE1	1:B:704:CYS:HB2	1.68	0.73
1:A:320:PHE:O	1:A:323:ARG:CG	2.29	0.73
1:B:778:THR:HB	1:B:781:ILE:HD11	1.71	0.73
1:B:760:ASP:O	1:B:764:LYS:HG2	1.89	0.73
1:A:98:ASN:O	1:A:103:GLN:N	2.19	0.72
1:B:103:GLN:OE1	1:B:103:GLN:CA	2.37	0.72
1:A:786:PHE:CZ	1:A:790:ILE:HG13	2.24	0.72
1:B:768:PHE:HE1	1:B:811:SER:HB3	1.53	0.72
1:A:98:ASN:ND2	1:A:101:LYS:HE3	2.05	0.71
1:A:97:VAL:HG21	1:A:105:VAL:CA	2.15	0.71
1:B:564:ILE:HG23	1:B:565:GLU:N	2.05	0.71
1:A:323:ARG:HH21	1:A:362:GLU:C	1.83	0.71
1:B:763:LYS:HG3	1:B:772:ILE:HD11	1.73	0.71
1:A:338:ASP:O	1:A:342:ILE:HD13	1.91	0.71
1:A:380:PHE:CD2	1:A:426:ARG:HD3	2.25	0.71
1:A:431:LEU:HD23	1:A:442:PHE:HZ	1.55	0.70
1:B:66:THR:CG2	1:B:256:CYS:HB3	2.22	0.70
1:B:320:PHE:CD2	1:B:361:VAL:HB	2.24	0.70
1:A:96:GLN:O	1:A:97:VAL:HG23	1.92	0.69
1:B:97:VAL:HG21	1:B:455:MET:CE	2.23	0.69
1:A:778:THR:HB	1:A:781:ILE:HD13	1.73	0.69
1:B:480:THR:H	1:B:483:MET:CE	1.93	0.69
1:A:323:ARG:CZ	1:A:362:GLU:CB	2.64	0.69
1:B:644:ARG:O	1:B:644:ARG:NH1	2.25	0.69
1:A:265:GLY:HA2	1:A:269:SER:HB2	1.75	0.68
1:A:79:ASP:CG	1:A:96:GLN:HG2	2.11	0.68
1:A:795:LEU:HD11	1:A:799:GLN:HG2	1.76	0.68
1:B:501:LYS:HB3	1:B:695:MET:SD	2.34	0.68
1:A:480:THR:HG23	1:A:483:MET:CE	2.23	0.68

Continued on next page...

Continued from previous page...

Atom-1	Atom-2	Distance(Å)	Clash(Å)
1:A:66:THR:CG2	1:A:256:CYS:HB3	2.22	0.68
1:B:319:LEU:O	1:B:320:PHE:HD1	1.75	0.68
1:B:319:LEU:HB3	1:B:320:PHE:CD1	2.22	0.68
1:A:94:ARG:NH2	1:A:96:GLN:OE1	2.27	0.67
1:B:21:LYS:HB3	1:B:21:LYS:NZ	2.10	0.67
1:A:502:GLN:OE1	1:A:502:GLN:N	2.26	0.67
1:A:331:ARG:HD2	1:B:588:TYR:CE2	2.30	0.67
1:A:390:LEU:HD23	1:A:431:LEU:HD22	1.77	0.67
1:B:575:PHE:O	1:B:579:VAL:HG23	1.94	0.67
1:B:281:ILE:HD12	1:B:304:GLU:HG3	1.76	0.67
1:A:356:LEU:HD11	1:A:371:VAL:HG21	1.76	0.66
1:A:910:ARG:O	1:A:914:GLU:HB2	1.95	0.66
1:A:572:GLU:HB3	1:A:643:ARG:HH12	1.60	0.66
1:A:202:ASN:O	1:A:204:VAL:HG23	1.96	0.66
1:B:797:LEU:HD21	1:B:817:ILE:HD13	1.78	0.66
1:A:324:ILE:HG23	1:A:328:LEU:HD23	1.77	0.65
1:B:662:MET:CE	1:B:687:MET:HE3	2.27	0.65
1:B:91:ARG:NH1	1:B:91:ARG:HB2	2.12	0.64
1:B:870:HIS:HD2	1:B:873:ARG:HH21	1.45	0.64
1:A:763:LYS:CG	1:A:772:ILE:HD11	2.27	0.64
1:B:768:PHE:CE1	1:B:811:SER:HB3	2.32	0.64
1:B:349:LEU:HD23	1:B:372:GLN:NE2	2.12	0.64
1:B:230:ILE:HD11	1:B:386:VAL:HG11	1.80	0.64
1:B:674:VAL:HB	1:B:858:VAL:HG22	1.78	0.64
1:B:160:GLN:HG2	1:B:165:GLU:O	1.98	0.63
1:A:79:ASP:O	1:A:148:LEU:HD22	1.98	0.63
1:A:56:ASN:N	1:A:57:PRO:HD2	2.14	0.63
1:A:595:ARG:NE	1:A:648:ASP:OD2	2.26	0.63
1:A:309:ILE:O	1:A:313:MET:HG3	1.99	0.63
1:A:39:ILE:HD13	1:A:42:ARG:HH21	1.64	0.63
1:B:471:GLU:HG3	6:B:1157:HOH:O	1.97	0.63
1:B:278:ASP:O	1:B:281:ILE:HG22	1.98	0.62
1:B:782:PHE:HD1	1:B:786:PHE:CE1	2.17	0.62
1:B:763:LYS:CG	1:B:772:ILE:HD11	2.29	0.62
1:A:431:LEU:CD2	1:A:442:PHE:HZ	2.11	0.62
1:A:786:PHE:O	1:A:790:ILE:HG12	2.00	0.62
1:A:398:ARG:HB3	1:A:398:ARG:HH11	1.65	0.62
1:B:420:HIS:CD2	1:B:423:TYR:H	2.13	0.61
1:A:398:ARG:NH1	1:A:398:ARG:HB3	2.15	0.61
1:B:437:ASP:OD1	1:B:437:ASP:N	2.32	0.61
1:A:124:SER:O	1:A:128:ASP:HB2	2.01	0.61
1:B:796:ALA:O	1:B:799:GLN:HB3	2.01	0.61

Continued on next page...

Continued from previous page...

Atom-1	Atom-2	Distance(Å)	Clash(Å)
1:B:639:ASP:O	1:B:643:ARG:HG3	2.01	0.61
1:B:320:PHE:HD2	1:B:361:VAL:CB	2.12	0.61
1:A:431:LEU:HD23	1:A:442:PHE:CZ	2.36	0.61
1:A:233:GLY:HA2	1:A:298:SER:CB	2.31	0.61
1:B:479:LEU:HA	1:B:483:MET:CE	2.29	0.60
1:A:572:GLU:CB	1:A:643:ARG:HH12	2.14	0.60
1:A:101:LYS:N	1:A:101:LYS:HD2	2.11	0.60
1:B:320:PHE:CD2	1:B:361:VAL:CB	2.85	0.60
1:B:492:ARG:HD3	6:B:1128:HOH:O	2.01	0.60
1:A:119:VAL:HG13	1:A:175:PHE:CD1	2.36	0.60
1:B:431:LEU:HD22	1:B:442:PHE:CZ	2.29	0.60
1:B:539:ARG:HB3	1:B:559:ILE:HD13	1.83	0.60
1:A:786:PHE:CD2	1:A:807:LEU:HD11	2.37	0.60
1:A:271:GLU:HA	1:A:271:GLU:OE1	2.00	0.60
1:B:66:THR:HG23	1:B:68:VAL:HG23	1.85	0.59
1:B:767:LEU:HG	1:B:818:LEU:HD23	1.83	0.59
1:B:671:THR:OG1	1:B:857:THR:HG23	2.02	0.59
1:B:97:VAL:HG21	1:B:455:MET:HE2	1.85	0.59
1:B:782:PHE:CD1	1:B:786:PHE:CE1	2.90	0.59
1:B:122:SER:OG	1:B:125:GLN:HG3	2.01	0.59
1:A:98:ASN:OD1	1:A:100:GLU:N	2.36	0.59
1:A:323:ARG:NH2	1:A:362:GLU:N	2.42	0.59
1:A:230:ILE:HD11	1:A:386:VAL:HG11	1.84	0.59
1:B:533:LEU:HD23	1:B:602:PHE:CE1	2.38	0.59
1:A:433:ARG:O	1:A:436:PRO:HD3	2.04	0.58
1:A:688:GLU:OE1	1:A:848:ASN:ND2	2.37	0.58
1:A:93:LEU:N	1:A:93:LEU:HD12	2.19	0.58
1:A:420:HIS:CD2	1:A:423:TYR:HB2	2.37	0.58
1:B:425:ARG:HH22	5:B:1007:CIT:H42	1.68	0.58
1:A:383:ALA:HB1	1:A:427:PHE:HB2	1.85	0.58
1:B:518:ARG:HH11	1:B:518:ARG:HG2	1.69	0.58
1:A:342:ILE:HG21	1:A:372:GLN:HA	1.84	0.57
1:B:426:ARG:HE	5:B:1007:CIT:H22	1.68	0.57
1:B:323:ARG:NH2	1:B:362:GLU:HB2	2.19	0.57
1:A:755:ARG:NH2	1:A:779:ARG:HB3	2.19	0.57
1:B:22:ILE:HD11	1:B:370:SER:HB3	1.86	0.57
1:B:601:THR:HA	1:B:655:VAL:O	2.04	0.57
1:A:97:VAL:HG21	1:A:105:VAL:HG22	1.87	0.57
1:B:98:ASN:ND2	1:B:101:LYS:CE	2.66	0.57
1:A:295:LYS:HA	1:A:301:TYR:CD2	2.40	0.57
1:A:26:LEU:HD21	1:A:309:ILE:CG2	2.34	0.57
1:B:26:LEU:HD12	1:B:377:ILE:HD12	1.85	0.57

Continued on next page...

Continued from previous page...

Atom-1	Atom-2	Distance(Å)	Clash(Å)
1:B:870:HIS:CD2	1:B:873:ARG:HH21	2.23	0.57
1:A:565:GLU:HG3	1:A:566:ILE:HG12	1.87	0.57
1:B:735:ASN:HB2	1:B:738:LYS:HE3	1.87	0.57
1:A:406:LEU:HG	1:A:408:THR:HG22	1.87	0.57
1:B:565:GLU:HG2	1:B:566:ILE:N	2.19	0.56
1:B:354:GLU:O	1:B:358:ARG:HG3	2.04	0.56
1:B:35:THR:O	1:B:38:ASP:HB3	2.05	0.56
1:A:566:ILE:CG2	1:A:566:ILE:CD1	2.83	0.56
1:B:853:ARG:HH11	1:B:853:ARG:CB	2.10	0.56
1:A:134:LEU:O	1:A:138:MET:HG3	2.05	0.56
1:B:319:LEU:CA	1:B:320:PHE:CD1	2.88	0.56
1:A:44:ARG:HA	1:A:47:MET:HE2	1.87	0.56
1:B:313:MET:HB2	1:B:319:LEU:HD12	1.88	0.56
1:A:286:LEU:C	1:A:288:PRO:HD3	2.26	0.56
1:B:786:PHE:CD2	1:B:807:LEU:HD11	2.41	0.56
1:B:640:ALA:HA	1:B:643:ARG:HE	1.71	0.56
1:B:598:LEU:C	1:B:598:LEU:HD23	2.27	0.55
1:A:98:ASN:HB3	1:A:103:GLN:OE1	2.07	0.55
1:B:795:LEU:HD11	1:B:799:GLN:HG2	1.87	0.55
1:B:533:LEU:HD23	1:B:602:PHE:HE1	1.71	0.55
1:B:534:GLY:HA3	1:B:603:SER:HB2	1.87	0.55
1:A:307:ARG:O	1:A:311:VAL:HG23	2.05	0.55
1:A:913:THR:HG22	1:A:913:THR:O	2.07	0.55
1:B:347:GLU:OE1	1:B:347:GLU:N	2.39	0.55
1:B:349:LEU:HD11	1:B:369:VAL:HG22	1.89	0.55
1:A:813:CYS:O	1:A:817:ILE:HG13	2.06	0.55
1:A:644:ARG:NH1	1:A:646:GLU:OE2	2.39	0.55
1:B:813:CYS:O	1:B:817:ILE:HG12	2.06	0.55
1:B:56:ASN:N	1:B:57:PRO:HD2	2.22	0.55
1:B:614:GLY:O	1:B:632:ASP:HA	2.07	0.54
1:A:323:ARG:NH2	1:A:362:GLU:H	2.03	0.54
1:B:797:LEU:HD21	1:B:817:ILE:CD1	2.37	0.54
1:A:44:ARG:HA	1:A:47:MET:CE	2.37	0.54
1:A:592:LYS:CE	1:A:646:GLU:OE1	2.55	0.54
1:A:408:THR:OG1	1:A:409:THR:N	2.40	0.54
1:B:20:LYS:HG3	1:B:24:LYS:HE3	1.87	0.54
1:B:564:ILE:CG2	1:B:565:GLU:N	2.70	0.54
1:A:428:HIS:O	1:A:432:ARG:HG3	2.07	0.54
1:B:103:GLN:OE1	1:B:103:GLN:O	2.26	0.54
1:A:26:LEU:HD22	1:A:29:MET:CE	2.37	0.54
1:A:480:THR:OG1	1:A:483:MET:HG3	2.08	0.54
1:B:425:ARG:NH2	5:B:1007:CIT:H42	2.23	0.53

Continued on next page...

Continued from previous page...

Atom-1	Atom-2	Distance(Å)	Clash(Å)
1:A:612:ASP:O	1:A:634:VAL:HG21	2.08	0.53
1:A:55:PHE:HA	1:B:799:GLN:NE2	2.23	0.53
1:B:773:SER:O	1:B:777:LYS:HD2	2.08	0.53
1:A:232:THR:O	1:A:298:SER:HB2	2.09	0.53
1:B:265:GLY:HA2	1:B:269:SER:HB3	1.89	0.53
1:B:351:ASN:O	1:B:355:ILE:HG12	2.08	0.53
1:A:790:ILE:O	1:A:820:LYS:NZ	2.42	0.53
1:B:193:ILE:HD13	1:B:201:ALA:HB3	1.90	0.53
1:B:232:THR:O	1:B:298:SER:HB2	2.09	0.53
1:A:140:LYS:HB2	1:A:141:ARG:HH11	1.74	0.53
1:B:390:LEU:HD23	1:B:431:LEU:HD13	1.92	0.52
1:B:718:LEU:C	1:B:720:ASP:N	2.62	0.52
1:A:755:ARG:HH21	1:A:779:ARG:HB3	1.74	0.52
1:B:281:ILE:CD1	1:B:304:GLU:HG3	2.39	0.52
1:B:536:THR:HG22	6:B:1215:HOH:O	2.09	0.52
1:B:58:THR:HG22	1:B:58:THR:O	2.09	0.52
1:A:207:VAL:HA	6:A:1180:HOH:O	2.09	0.52
1:B:302:LEU:HD22	1:B:378:VAL:HG12	1.92	0.52
1:A:98:ASN:HD21	1:A:101:LYS:HE3	1.75	0.52
1:B:564:ILE:HG23	1:B:565:GLU:H	1.73	0.52
1:A:380:PHE:HE2	1:A:426:ARG:HB3	1.74	0.51
1:B:768:PHE:HA	1:B:769:ARG:NH2	2.24	0.51
1:B:501:LYS:CB	1:B:695:MET:SD	2.98	0.51
1:B:799:GLN:O	1:B:803:ILE:HG13	2.11	0.51
1:B:702:GLN:HB2	6:B:1173:HOH:O	2.11	0.51
1:A:565:GLU:CG	1:A:566:ILE:N	2.73	0.51
1:A:136:ASP:O	1:A:140:LYS:HG3	2.10	0.51
1:A:546:ARG:O	1:A:551:ARG:HA	2.11	0.51
1:A:90:PHE:CZ	1:A:130:VAL:HG13	2.44	0.51
1:B:347:GLU:O	1:B:348:GLY:C	2.49	0.51
1:B:619:TRP:CD1	1:B:624:LYS:HA	2.46	0.51
1:B:142:LYS:HE2	1:B:142:LYS:HA	1.92	0.51
1:B:640:ALA:HA	1:B:643:ARG:NE	2.26	0.51
1:B:144:LYS:NZ	1:B:198:ASP:HB3	2.26	0.51
1:B:313:MET:HB2	1:B:319:LEU:CD1	2.41	0.51
1:A:26:LEU:HD21	1:A:309:ILE:HG23	1.94	0.51
1:B:219:TYR:CD2	1:B:451:LYS:HD3	2.46	0.51
1:B:97:VAL:HG21	1:B:455:MET:HE1	1.91	0.50
1:B:91:ARG:HH11	1:B:91:ARG:CB	2.25	0.50
1:B:193:ILE:HD13	1:B:201:ALA:CB	2.41	0.50
1:A:167:ILE:HA	1:A:183:ALA:O	2.12	0.50
1:A:588:TYR:CZ	1:B:331:ARG:HD2	2.46	0.50

Continued on next page...

Continued from previous page...

Atom-1	Atom-2	Distance(Å)	Clash(Å)
1:A:342:ILE:CG2	1:A:372:GLN:HA	2.41	0.50
1:A:797:LEU:HD11	1:A:817:ILE:HD11	1.93	0.50
1:B:764:LYS:HB3	6:B:1148:HOH:O	2.11	0.50
1:A:376:THR:O	1:A:380:PHE:HB2	2.12	0.50
1:A:514:SER:O	1:A:515:PHE:HB2	2.12	0.50
1:A:119:VAL:HG12	1:A:175:PHE:HA	1.94	0.50
1:B:655:VAL:HG12	1:B:656:ASN:O	2.11	0.50
1:B:320:PHE:CD2	1:B:361:VAL:HG21	2.46	0.50
1:A:541:LEU:HD12	1:A:541:LEU:N	2.27	0.49
1:B:480:THR:HG23	1:B:483:MET:CE	2.42	0.49
1:B:102:ASN:OD1	1:B:102:ASN:O	2.30	0.49
1:A:767:LEU:HD23	1:A:815:ASP:OD1	2.12	0.49
1:A:907:VAL:O	1:A:911:LEU:HG	2.12	0.49
1:A:854:LEU:HD12	1:A:855:ASN:N	2.27	0.49
1:B:570:THR:OG1	1:B:573:GLU:HG3	2.12	0.49
1:A:718:LEU:C	1:A:720:ASP:N	2.65	0.49
1:B:514:SER:OG	1:B:704:CYS:HB3	2.13	0.49
1:A:797:LEU:HD21	1:A:817:ILE:HG12	1.94	0.49
1:A:33:ASP:O	1:A:37:ILE:HG12	2.13	0.49
1:A:86:GLY:HA3	1:A:155:SER:OG	2.12	0.49
1:B:844:LYS:NZ	1:B:848:ASN:HD21	2.11	0.49
1:B:623:PHE:O	1:B:624:LYS:CG	2.61	0.49
1:A:40:MET:HG3	1:A:388:ALA:O	2.13	0.49
1:A:323:ARG:NE	1:A:362:GLU:HG2	2.28	0.49
1:B:870:HIS:CD2	1:B:873:ARG:NH2	2.80	0.49
1:A:565:GLU:HG2	1:A:566:ILE:H	1.78	0.48
1:B:66:THR:CG2	1:B:68:VAL:H	2.26	0.48
1:B:204:VAL:HG12	1:B:204:VAL:O	2.11	0.48
1:A:566:ILE:CD1	1:A:566:ILE:CB	2.82	0.48
1:A:25:TYR:HE2	1:A:313:MET:HG2	1.78	0.48
1:A:412:VAL:HG12	1:A:413:ASP:N	2.27	0.48
1:A:398:ARG:CB	1:A:398:ARG:HH11	2.27	0.48
1:A:541:LEU:HG	1:A:557:ASN:HB3	1.93	0.48
1:A:564:ILE:HD12	1:A:565:GLU:N	2.28	0.48
1:A:126:LEU:O	1:A:130:VAL:HG23	2.13	0.48
1:B:762:THR:O	1:B:770:GLY:HA2	2.13	0.48
1:A:56:ASN:N	1:A:57:PRO:CD	2.77	0.48
1:A:637:LEU:O	1:A:641:ILE:HG13	2.14	0.48
1:B:325:THR:HG21	1:B:360:GLY:HA3	1.96	0.48
1:B:772:ILE:HG22	1:B:777:LYS:HD2	1.95	0.48
1:B:83:LEU:HB2	1:B:152:PHE:HD1	1.79	0.48
1:B:693:VAL:HG12	1:B:693:VAL:O	2.13	0.48

Continued on next page...

Continued from previous page...

Atom-1	Atom-2	Distance(Å)	Clash(Å)
1:A:602:PHE:CE2	1:A:633:VAL:HG11	2.49	0.48
1:B:361:VAL:O	1:B:363:PRO:HD3	2.14	0.48
1:A:44:ARG:HG2	1:A:392:ALA:HB1	1.96	0.48
1:B:330:THR:HB	1:B:333:LYS:HG3	1.96	0.48
1:A:564:ILE:HA	6:A:1231:HOH:O	2.12	0.47
1:A:414:GLY:HA2	3:A:1002:ONZ:O6	2.14	0.47
1:B:862:GLY:HA2	3:B:1004:ONZ:O6	2.14	0.47
1:B:491:MET:O	1:B:495:MET:HG3	2.13	0.47
1:B:312:LYS:O	1:B:316:GLU:HG3	2.15	0.47
1:A:119:VAL:O	1:A:119:VAL:HG12	2.14	0.47
1:B:323:ARG:CZ	1:B:362:GLU:HB2	2.44	0.47
1:B:623:PHE:O	1:B:624:LYS:HG2	2.15	0.47
1:B:171:TRP:HB3	1:B:175:PHE:O	2.15	0.47
1:B:755:ARG:O	1:B:759:ILE:HG12	2.14	0.47
1:B:677:ILE:CD1	1:B:861:ASP:HB3	2.44	0.47
1:B:330:THR:HB	1:B:333:LYS:CG	2.44	0.47
1:A:416:LEU:HD21	1:A:423:TYR:CE2	2.50	0.47
1:B:66:THR:HG23	1:B:68:VAL:H	1.79	0.47
1:B:786:PHE:CZ	1:B:790:ILE:HG13	2.49	0.47
1:A:860:VAL:HG11	1:A:865:TYR:CE2	2.49	0.47
1:B:743:LYS:HA	1:B:749:TYR:CD2	2.49	0.47
1:A:193:ILE:HD13	1:A:201:ALA:HB3	1.97	0.47
1:B:376:THR:O	1:B:380:PHE:HB2	2.14	0.47
1:B:662:MET:HE3	1:B:687:MET:HE3	1.97	0.47
1:A:67:PHE:HE2	1:A:160:GLN:O	1.99	0.46
1:A:134:LEU:HB3	1:A:199:TYR:OH	2.15	0.46
1:A:24:LYS:O	1:A:27:TYR:HB3	2.15	0.46
1:A:502:GLN:CD	1:A:502:GLN:H	2.15	0.46
1:B:801:ARG:HG2	1:B:805:GLN:NE2	2.30	0.46
1:B:93:LEU:HD12	1:B:93:LEU:N	2.30	0.46
1:B:564:ILE:CG2	1:B:565:GLU:H	2.27	0.46
1:A:367:ASP:O	1:A:371:VAL:HG23	2.15	0.46
1:B:318:LEU:HD23	1:B:318:LEU:HA	1.44	0.46
1:B:281:ILE:CD1	1:B:304:GLU:CG	2.94	0.46
1:B:714:ASP:OD1	1:B:740:ARG:HG2	2.15	0.46
1:A:297:VAL:HG13	1:A:382:SER:OG	2.16	0.46
1:A:564:ILE:HG13	1:A:565:GLU:H	1.81	0.46
1:B:778:THR:O	1:B:781:ILE:HG13	2.16	0.46
1:B:119:VAL:HG12	1:B:175:PHE:HA	1.98	0.46
1:A:226:VAL:HG12	1:A:227:GLY:N	2.31	0.46
1:B:786:PHE:CD1	1:B:787:LEU:N	2.84	0.46
1:A:420:HIS:HD2	1:A:423:TYR:N	2.14	0.46

Continued on next page...

Continued from previous page...

Atom-1	Atom-2	Distance(Å)	Clash(Å)
1:A:768:PHE:HE1	1:A:811:SER:HB3	1.81	0.46
1:B:281:ILE:HD11	1:B:304:GLU:HB3	1.98	0.46
1:A:140:LYS:C	1:A:141:ARG:HD2	2.35	0.46
1:A:453:ALA:O	1:A:456:VAL:HB	2.15	0.46
1:A:873:ARG:HH11	1:A:873:ARG:HG2	1.81	0.46
1:A:356:LEU:CD1	1:A:371:VAL:HG21	2.43	0.45
1:A:313:MET:HB3	1:A:318:LEU:HB2	1.97	0.45
1:A:552:THR:HG22	1:B:117:ASN:ND2	2.31	0.45
1:A:674:VAL:HB	1:A:858:VAL:HG22	1.98	0.45
1:B:105:VAL:CG1	1:B:105:VAL:O	2.63	0.45
1:A:21:LYS:HB2	1:A:21:LYS:NZ	2.30	0.45
1:A:767:LEU:HD13	1:A:768:PHE:CE2	2.52	0.45
1:A:821:THR:O	1:A:825:VAL:HG23	2.17	0.45
1:A:112:TYR:OH	1:A:137:PHE:HB2	2.16	0.45
1:A:224:CYS:HA	1:A:409:THR:O	2.16	0.45
1:A:94:ARG:O	1:A:107:MET:HA	2.16	0.45
1:B:307:ARG:HB2	1:B:334:PHE:HB3	1.98	0.45
1:A:39:ILE:CD1	1:A:42:ARG:HH21	2.29	0.45
1:B:836:ALA:HA	1:B:882:LEU:HD12	1.99	0.45
1:A:25:TYR:CE2	1:A:313:MET:HG2	2.52	0.45
1:B:664:THR:HG23	1:B:899:LYS:HB3	1.98	0.45
1:A:323:ARG:HE	1:A:362:GLU:H	1.65	0.45
1:B:272:ASP:OD1	1:B:273:ILE:HD13	2.17	0.45
1:A:93:LEU:HD22	1:A:450:GLY:CA	2.42	0.45
1:B:563:PRO:HB2	1:B:566:ILE:HG13	1.99	0.45
1:A:238:TYR:CE2	1:A:240:GLU:HB2	2.52	0.45
1:A:619:TRP:HB3	1:A:623:PHE:O	2.17	0.45
1:B:64:LEU:HD13	1:B:158:CYS:O	2.16	0.45
1:A:66:THR:CG2	1:A:256:CYS:O	2.49	0.44
1:A:786:PHE:CE2	1:A:790:ILE:HG13	2.52	0.44
1:A:286:LEU:O	1:A:288:PRO:HD3	2.17	0.44
1:B:910:ARG:HG3	1:B:914:GLU:OE2	2.16	0.44
1:B:280:GLU:HG3	1:B:283:ARG:NH2	2.32	0.44
1:A:342:ILE:CG2	1:A:372:GLN:HG3	2.48	0.44
1:B:21:LYS:HB3	1:B:21:LYS:HZ2	1.79	0.44
1:A:185:VAL:HA	1:A:188:LEU:HD12	1.99	0.44
1:B:591:ILE:H	1:B:591:ILE:HG13	1.61	0.44
1:B:71:ILE:HB	1:B:72:PRO:HD2	1.99	0.44
1:B:380:PHE:CD2	1:B:426:ARG:HD3	2.53	0.44
1:A:768:PHE:HA	1:A:769:ARG:CZ	2.47	0.44
1:B:801:ARG:HG2	1:B:805:GLN:HE22	1.82	0.44
1:B:384:ASN:HD22	1:B:384:ASN:HA	1.62	0.44

Continued on next page...

Continued from previous page...

Atom-1	Atom-2	Distance(Å)	Clash(Å)
1:A:479:LEU:HA	1:A:483:MET:CE	2.47	0.44
1:A:373:HIS:O	1:A:377:ILE:HG12	2.16	0.44
1:A:106:HIS:ND1	1:A:107:MET:N	2.65	0.44
1:B:320:PHE:CD2	1:B:361:VAL:CG2	3.00	0.44
1:B:342:ILE:O	1:B:372:GLN:HG3	2.16	0.44
1:A:86:GLY:O	1:A:173:LYS:NZ	2.47	0.44
1:B:712:PHE:HB3	1:B:741:TYR:HB2	2.00	0.44
1:B:791:GLU:OE1	1:B:824:GLY:HA2	2.18	0.44
1:B:844:LYS:HZ2	1:B:848:ASN:HD21	1.64	0.44
1:B:204:VAL:HG12	1:B:460:ALA:HB1	1.99	0.44
1:B:42:ARG:O	1:B:46:GLU:HG2	2.18	0.44
1:A:565:GLU:CG	1:A:566:ILE:HG12	2.47	0.44
1:A:297:VAL:HA	1:A:382:SER:OG	2.18	0.44
1:B:563:PRO:O	1:B:564:ILE:C	2.56	0.44
1:B:718:LEU:O	1:B:720:ASP:N	2.51	0.44
1:A:551:ARG:NH1	1:A:551:ARG:HG3	2.32	0.44
1:B:548:GLY:O	1:B:549:LYS:C	2.56	0.44
1:A:589:MET:HB2	1:A:591:ILE:HG12	2.00	0.44
1:A:99:HIS:O	1:A:102:ASN:N	2.48	0.44
1:B:148:LEU:HA	1:B:149:PRO:HD3	1.75	0.44
1:B:471:GLU:OE1	1:B:471:GLU:O	2.35	0.43
1:B:336:THR:O	1:B:339:VAL:HB	2.18	0.43
1:B:480:THR:HG23	1:B:483:MET:HE2	2.00	0.43
1:A:229:ILE:O	1:A:234:THR:HA	2.19	0.43
1:A:735:ASN:HB2	1:A:738:LYS:HE3	2.00	0.43
1:A:100:GLU:HB3	1:A:101:LYS:CD	2.49	0.43
1:A:790:ILE:HD11	1:A:803:ILE:CG2	2.48	0.43
1:A:420:HIS:HB3	1:A:423:TYR:HB2	2.01	0.43
1:B:91:ARG:NH1	1:B:91:ARG:CB	2.80	0.43
1:B:71:ILE:HA	1:B:215:MET:SD	2.57	0.43
1:A:486:GLU:HG2	6:A:1141:HOH:O	2.17	0.43
1:B:644:ARG:HA	1:B:644:ARG:HD2	1.31	0.43
1:B:775:THR:O	1:B:781:ILE:HD13	2.04	0.43
1:B:539:ARG:NH1	1:B:559:ILE:HD11	2.33	0.43
1:A:551:ARG:HH11	1:A:551:ARG:HG3	1.83	0.43
1:A:400:ASN:HD22	1:A:400:ASN:HA	1.62	0.43
1:A:204:VAL:O	1:A:204:VAL:HG12	2.17	0.43
1:A:26:LEU:HD21	1:A:309:ILE:HG21	2.01	0.43
1:B:611:LEU:HG	1:B:653:ALA:CB	2.49	0.43
1:B:508:VAL:HG22	6:B:1223:HOH:O	2.19	0.43
1:A:98:ASN:ND2	1:A:101:LYS:CE	2.80	0.43
1:B:798:LEU:CD2	1:B:798:LEU:O	2.67	0.43

Continued on next page...

Continued from previous page...

Atom-1	Atom-2	Distance(Å)	Clash(Å)
1:B:349:LEU:HD11	1:B:369:VAL:CG2	2.49	0.43
1:A:58:THR:OG1	1:B:799:GLN:NE2	2.52	0.43
1:B:672:CYS:HA	1:B:857:THR:O	2.19	0.43
1:A:251:ASP:OD1	1:A:251:ASP:N	2.50	0.43
1:A:79:ASP:OD2	1:A:148:LEU:HD21	2.19	0.42
1:A:265:GLY:HA2	1:A:269:SER:CB	2.46	0.42
1:A:420:HIS:HD2	1:A:423:TYR:HB2	1.82	0.42
1:B:529:LEU:O	1:B:598:LEU:HA	2.19	0.42
1:A:525:ASN:OD1	1:A:546:ARG:HA	2.19	0.42
1:A:159:GLN:HB3	1:A:167:ILE:HB	2.01	0.42
1:A:861:ASP:OD1	1:A:866:LYS:HE3	2.19	0.42
1:A:83:LEU:HB2	1:A:152:PHE:HD1	1.84	0.42
1:B:480:THR:N	1:B:483:MET:CE	2.68	0.42
1:B:384:ASN:ND2	1:B:430:THR:HG21	2.33	0.42
1:A:69:ARG:O	1:A:70:SER:HB3	2.19	0.42
1:B:405:ARG:CB	1:B:405:ARG:HH11	2.27	0.42
1:A:342:ILE:HG13	1:A:352:ALA:HB2	2.02	0.42
1:B:67:PHE:HE2	1:B:160:GLN:O	2.03	0.42
1:A:451:LYS:O	1:A:455:MET:HG2	2.19	0.42
1:A:477:PHE:CZ	1:A:757:ILE:HD11	2.54	0.42
1:B:492:ARG:CZ	1:B:844:LYS:HG3	2.49	0.42
1:A:44:ARG:NH1	1:A:395:ASN:HB3	2.35	0.42
1:B:212:GLY:HA3	1:B:449:SER:HB2	2.00	0.42
1:B:738:LYS:HE3	6:B:1129:HOH:O	2.18	0.42
1:B:818:LEU:O	1:B:822:VAL:HG23	2.20	0.42
1:B:22:ILE:HD11	1:B:370:SER:CB	2.48	0.42
1:B:83:LEU:HB2	1:B:152:PHE:CD1	2.54	0.42
1:A:519:THR:HB	1:A:520:PRO:HD2	2.01	0.42
1:A:803:ILE:O	1:A:806:GLN:HB2	2.20	0.42
1:A:911:LEU:O	1:A:914:GLU:HB3	2.20	0.42
1:B:718:LEU:C	1:B:720:ASP:H	2.23	0.42
1:A:652:VAL:HG21	1:A:909:VAL:HG22	2.01	0.42
1:B:775:THR:HG22	1:B:781:ILE:HD13	2.01	0.42
1:B:324:ILE:HG23	1:B:328:LEU:HD23	2.01	0.42
1:B:518:ARG:CG	1:B:518:ARG:HH11	2.32	0.41
1:A:57:PRO:HG2	1:B:799:GLN:HE21	1.84	0.41
1:B:523:THR:OG1	1:B:910:ARG:NH1	2.53	0.41
1:B:79:ASP:O	1:B:149:PRO:HD2	2.20	0.41
1:B:347:GLU:HB2	1:B:351:ASN:ND2	2.36	0.41
1:B:347:GLU:O	1:B:351:ASN:N	2.43	0.41
1:B:21:LYS:HZ3	1:B:21:LYS:HB3	1.83	0.41
1:B:349:LEU:HA	1:B:349:LEU:HD22	1.76	0.41

Continued on next page...

Continued from previous page...

Atom-1	Atom-2	Distance(Å)	Clash(Å)
1:A:277:PHE:CE1	1:A:309:ILE:HA	2.55	0.41
1:B:523:THR:O	1:B:524:GLU:C	2.57	0.41
1:A:601:THR:HA	1:A:655:VAL:O	2.20	0.41
1:B:690:MET:SD	1:B:703:MET:HB2	2.60	0.41
1:B:589:MET:CB	1:B:591:ILE:HG12	2.50	0.41
1:B:563:PRO:O	1:B:566:ILE:N	2.41	0.41
1:B:654:VAL:HG13	1:B:654:VAL:O	2.20	0.41
1:B:754:VAL:O	1:B:758:LEU:HG	2.20	0.41
1:B:234:THR:HG22	1:B:294:GLU:HG3	2.03	0.41
1:A:248:VAL:HG21	1:A:255:MET:HE1	2.03	0.41
1:A:97:VAL:HG21	1:A:105:VAL:CG2	2.51	0.41
1:B:592:LYS:O	1:B:592:LYS:HG3	2.21	0.41
1:A:380:PHE:HD2	1:A:426:ARG:HD3	1.76	0.41
1:A:878:THR:O	1:A:882:LEU:HG	2.20	0.41
1:B:86:GLY:HA3	1:B:155:SER:OG	2.21	0.41
1:A:564:ILE:CG1	1:A:565:GLU:N	2.84	0.41
1:B:786:PHE:C	1:B:786:PHE:CD1	2.94	0.41
1:A:295:LYS:HB2	6:A:1228:HOH:O	2.21	0.41
1:B:20:LYS:HE3	1:B:24:LYS:CE	2.51	0.41
1:A:152:PHE:O	1:A:206:VAL:HA	2.21	0.41
1:B:652:VAL:HB	1:B:905:THR:HG23	2.03	0.41
1:B:615:ILE:HA	1:B:631:HIS:O	2.21	0.41
1:B:105:VAL:O	1:B:105:VAL:HG13	2.21	0.41
1:A:330:THR:HB	1:A:333:LYS:CG	2.51	0.41
1:A:98:ASN:H	1:A:103:GLN:HB2	1.87	0.40
1:B:798:LEU:HG	6:B:1114:HOH:O	2.20	0.40
1:A:91:ARG:CB	1:A:91:ARG:NH1	2.84	0.40
1:A:323:ARG:NE	1:A:362:GLU:CG	2.85	0.40
1:B:532:ASP:O	1:B:538:PHE:HA	2.21	0.40
1:A:782:PHE:CD1	1:A:786:PHE:CE1	3.09	0.40
1:B:17:ASP:O	1:B:21:LYS:HG3	2.21	0.40
1:B:718:LEU:HD22	1:B:721:ILE:HD11	2.04	0.40
1:B:99:HIS:C	1:B:102:ASN:H	2.25	0.40
1:B:712:PHE:HB3	1:B:741:TYR:CB	2.51	0.40
1:A:139:GLU:OE1	1:A:139:GLU:HA	2.21	0.40
1:B:778:THR:HB	1:B:781:ILE:CD1	2.48	0.40
1:B:483:MET:O	1:B:487:VAL:HG23	2.21	0.40
1:B:586:LEU:HB3	1:B:592:LYS:HB3	2.03	0.40
1:A:677:ILE:O	1:A:682:SER:HA	2.21	0.40
1:B:18:GLN:OE1	1:B:18:GLN:HA	2.21	0.40
1:B:673:GLU:CD	1:B:849:ARG:HH22	2.25	0.40
1:A:570:THR:HA	1:A:626:THR:OG1	2.22	0.40

Continued on next page...

Continued from previous page...

Atom-1	Atom-2	Distance(Å)	Clash(Å)
1:B:431:LEU:CD2	1:B:442:PHE:HZ	2.21	0.40

There are no symmetry-related clashes.

5.3 Torsion angles

5.3.1 Protein backbone ⓘ

In the following table, the Percentiles column shows the percent Ramachandran outliers of the chain as a percentile score with respect to all X-ray entries followed by that with respect to entries of similar resolution. The Analysed column shows the number of residues for which the backbone conformation was analysed, and the total number of residues.

Mol	Chain	Analysed	Favoured	Allowed	Outliers	Percentiles	
1	A	897/914 (98%)	838 (93%)	58 (6%)	1 (0%)	59	87
1	B	897/914 (98%)	843 (94%)	53 (6%)	1 (0%)	59	87
All	All	1794/1828 (98%)	1681 (94%)	111 (6%)	2 (0%)	59	87

All (2) Ramachandran outliers are listed below:

Mol	Chain	Res	Type
1	A	104	ASN
1	B	564	ILE

5.3.2 Protein sidechains ⓘ

In the following table, the Percentiles column shows the percent sidechain outliers of the chain as a percentile score with respect to all X-ray entries followed by that with respect to entries of similar resolution. The Analysed column shows the number of residues for which the sidechain conformation was analysed, and the total number of residues.

Mol	Chain	Analysed	Rotameric	Outliers	Percentiles	
1	A	774/786 (98%)	741 (96%)	33 (4%)	40	70
1	B	774/786 (98%)	740 (96%)	34 (4%)	39	69
All	All	1548/1572 (98%)	1481 (96%)	67 (4%)	40	70

All (67) residues with a non-rotameric sidechain are listed below:

Mol	Chain	Res	Type
1	A	18	GLN
1	A	21	LYS
1	A	23	ASP
1	A	27	TYR
1	A	80	PHE
1	A	93	LEU
1	A	100	GLU
1	A	101	LYS
1	A	102	ASN
1	A	128	ASP
1	A	159	GLN
1	A	249	GLU
1	A	254	ARG
1	A	261	TRP
1	A	271	GLU
1	A	320	PHE
1	A	321	GLU
1	A	380	PHE
1	A	399	ASP
1	A	408	THR
1	A	481	LYS
1	A	502	GLN
1	A	541	LEU
1	A	551	ARG
1	A	567	MET
1	A	570	THR
1	A	709	TRP
1	A	769	ARG
1	A	781	ILE
1	A	786	PHE
1	A	810	ASN
1	A	843	ASP
1	A	877	GLN
1	B	66	THR
1	B	93	LEU
1	B	103	GLN
1	B	105	VAL
1	B	146	LYS
1	B	147	LYS
1	B	202	ASN
1	B	261	TRP
1	B	281	ILE
1	B	320	PHE

Continued on next page...

Continued from previous page...

Mol	Chain	Res	Type
1	B	321	GLU
1	B	349	LEU
1	B	380	PHE
1	B	407	ARG
1	B	424	SER
1	B	435	VAL
1	B	437	ASP
1	B	481	LYS
1	B	518	ARG
1	B	531	LEU
1	B	564	ILE
1	B	591	ILE
1	B	592	LYS
1	B	644	ARG
1	B	709	TRP
1	B	721	ILE
1	B	764	LYS
1	B	769	ARG
1	B	777	LYS
1	B	786	PHE
1	B	798	LEU
1	B	805	GLN
1	B	843	ASP
1	B	887	ASN

Some sidechains can be flipped to improve hydrogen bonding and reduce clashes. All (43) such sidechains are listed below:

Mol	Chain	Res	Type
1	A	18	GLN
1	A	102	ASN
1	A	104	ASN
1	A	125	GLN
1	A	159	GLN
1	A	202	ASN
1	A	222	GLN
1	A	384	ASN
1	A	400	ASN
1	A	466	GLN
1	A	506	ASN
1	A	700	GLN
1	A	771	GLN
1	A	799	GLN

Continued on next page...

Continued from previous page...

Mol	Chain	Res	Type
1	A	805	GLN
1	A	806	GLN
1	A	810	ASN
1	A	832	GLN
1	A	887	ASN
1	B	102	ASN
1	B	117	ASN
1	B	125	GLN
1	B	202	ASN
1	B	345	ASN
1	B	351	ASN
1	B	372	GLN
1	B	384	ASN
1	B	400	ASN
1	B	420	HIS
1	B	466	GLN
1	B	469	GLN
1	B	502	GLN
1	B	506	ASN
1	B	557	ASN
1	B	607	GLN
1	B	771	GLN
1	B	799	GLN
1	B	805	GLN
1	B	806	GLN
1	B	832	GLN
1	B	848	ASN
1	B	870	HIS
1	B	887	ASN

5.3.3 RNA ⓘ

There are no RNA chains in this entry.

5.4 Non-standard residues in protein, DNA, RNA chains ⓘ

There are no non-standard protein/DNA/RNA residues in this entry.

5.5 Carbohydrates ⓘ

There are no carbohydrates in this entry.

5.6 Ligand geometry

Of 13 ligands modelled in this entry, 4 are monoatomic - leaving 9 for Mogul analysis.

In the following table, the Counts columns list the number of bonds (or angles) for which Mogul statistics could be retrieved, the number of bonds (or angles) that are observed in the model and the number of bonds (or angles) that are defined in the chemical component dictionary. The Link column lists molecule types, if any, to which the group is linked. The Z score for a bond length (or angle) is the number of standard deviations the observed value is removed from the expected value. A bond length (or angle) with $|Z| > 2$ is considered an outlier worth inspection. RMSZ is the root-mean-square of all Z scores of the bond lengths (or angles).

Mol	Type	Chain	Res	Link	Bond lengths			Bond angles		
					Counts	RMSZ	$\# Z > 2$	Counts	RMSZ	$\# Z > 2$
2	BGC	A	1001	-	12,12,12	0.51	0	17,17,17	1.06	2 (11%)
3	0NZ	A	1002	-	15,15,15	0.99	2 (13%)	22,22,22	0.73	1 (4%)
2	BGC	A	1003	-	12,12,12	0.35	0	17,17,17	1.32	3 (17%)
3	0NZ	A	1004	-	15,15,15	1.23	2 (13%)	22,22,22	1.08	2 (9%)
2	BGC	B	1001	-	12,12,12	0.43	0	17,17,17	1.10	2 (11%)
3	0NZ	B	1002	-	15,15,15	1.19	2 (13%)	22,22,22	0.90	1 (4%)
2	BGC	B	1003	-	12,12,12	0.35	0	17,17,17	0.89	1 (5%)
3	0NZ	B	1004	-	15,15,15	1.13	1 (6%)	22,22,22	0.88	1 (4%)
5	CIT	B	1007	-	12,12,12	0.90	0	17,17,17	1.66	1 (5%)

In the following table, the Chirals column lists the number of chiral outliers, the number of chiral centers analysed, the number of these observed in the model and the number defined in the chemical component dictionary. Similar counts are reported in the Torsion and Rings columns. '-' means no outliers of that kind were identified.

Mol	Type	Chain	Res	Link	Chirals	Torsions	Rings
2	BGC	A	1001	-	-	0/2/22/22	0/1/1/1
3	0NZ	A	1002	-	-	0/6/22/22	0/1/1/1
2	BGC	A	1003	-	-	0/2/22/22	0/1/1/1
3	0NZ	A	1004	-	-	0/6/22/22	0/1/1/1
2	BGC	B	1001	-	-	0/2/22/22	0/1/1/1
3	0NZ	B	1002	-	-	0/6/22/22	0/1/1/1
2	BGC	B	1003	-	-	0/2/22/22	0/1/1/1
3	0NZ	B	1004	-	-	0/6/22/22	0/1/1/1
5	CIT	B	1007	-	-	0/16/16/16	0/0/0/0

All (7) bond length outliers are listed below:

Mol	Chain	Res	Type	Atoms	Z	Observed(Å)	Ideal(Å)
3	B	1002	0NZ	P-O1P	3.02	1.61	1.51
3	A	1004	0NZ	P-O1P	2.90	1.60	1.51
3	B	1004	0NZ	P-O1P	2.87	1.60	1.51
3	A	1002	0NZ	P-O2P	2.08	1.62	1.54
3	B	1002	0NZ	P-O3P	2.04	1.62	1.54
3	A	1004	0NZ	O1-C1	2.01	1.43	1.39
3	A	1002	0NZ	P-O3P	2.01	1.62	1.54

All (14) bond angle outliers are listed below:

Mol	Chain	Res	Type	Atoms	Z	Observed(°)	Ideal(°)
5	B	1007	CIT	O6-C6-C3	5.18	120.42	112.89
2	A	1003	BGC	O5-C1-C2	-3.60	104.29	109.86
3	A	1004	0NZ	O3P-P-O6	3.08	115.15	106.65
2	B	1001	BGC	O5-C1-C2	-2.96	105.28	109.86
2	B	1001	BGC	C1-O5-C5	-2.78	108.43	113.40
3	B	1004	0NZ	O2P-P-O6	2.57	113.75	106.65
2	A	1003	BGC	C1-C2-C3	-2.55	106.49	110.53
2	A	1003	BGC	C1-O5-C5	-2.45	109.02	113.40
3	B	1002	0NZ	O2P-P-O6	2.40	113.27	106.65
2	A	1001	BGC	O5-C1-C2	-2.22	106.42	109.86
2	A	1001	BGC	C1-O5-C5	-2.22	109.43	113.40
2	B	1003	BGC	C1-C2-C3	-2.20	107.04	110.53
3	A	1004	0NZ	O5-C1-C2	-2.18	109.06	110.72
3	A	1002	0NZ	O6-P-O1P	2.15	113.00	106.71

There are no chirality outliers.

There are no torsion outliers.

There are no ring outliers.

5.7 Other polymers ⓘ

There are no such residues in this entry.

5.8 Polymer linkage issues

There are no chain breaks in this entry.

6 Fit of model and data ⓘ

6.1 Protein, DNA and RNA chains ⓘ

In the following table, the column labelled ‘#RSRZ> 2’ contains the number (and percentage) of RSRZ outliers, followed by percent RSRZ outliers for the chain as percentile scores relative to all X-ray entries and entries of similar resolution. The OWAB column contains the minimum, median, 95th percentile and maximum values of the occupancy-weighted average B-factor per residue. The column labelled ‘Q< 0.9’ lists the number of (and percentage) of residues with an average occupancy less than 0.9.

Mol	Chain	Analysed	<RSRZ>	#RSRZ>2	OWAB(Å ²)	Q<0.9
1	A	899/914 (98%)	0.37	60 (6%) 17 18	27, 53, 81, 122	0
1	B	899/914 (98%)	0.33	58 (6%) 18 19	27, 53, 81, 122	0
All	All	1798/1828 (98%)	0.35	118 (6%) 18 19	27, 53, 81, 122	0

All (118) RSRZ outliers are listed below:

Mol	Chain	Res	Type	RSRZ
1	A	16	ASP	5.3
1	B	103	GLN	4.7
1	A	17	ASP	4.6
1	A	118	ILE	4.5
1	B	913	THR	4.5
1	A	406	LEU	4.4
1	A	685	CYS	4.3
1	B	914	GLU	4.3
1	A	786	PHE	4.3
1	A	143	ILE	4.1
1	A	142	LYS	4.0
1	B	436	PRO	4.0
1	B	100	GLU	3.9
1	B	99	HIS	3.9
1	A	684	ALA	3.9
1	A	126	LEU	3.8
1	A	350	HIS	3.6
1	B	101	LYS	3.5
1	A	145	ASP	3.5
1	B	17	ASP	3.4
1	A	794	ARG	3.3
1	B	359	LEU	3.3
1	A	138	MET	3.3
1	B	102	ASN	3.2

Continued on next page...

Continued from previous page...

Mol	Chain	Res	Type	RSRZ
1	B	16	ASP	3.2
1	A	683	ASN	3.1
1	A	401	LYS	3.1
1	A	658	THR	3.1
1	B	210	THR	3.1
1	B	786	PHE	3.0
1	A	911	LEU	3.0
1	A	564	ILE	2.9
1	B	648	ASP	2.9
1	A	346	LYS	2.9
1	B	235	ASN	2.9
1	B	649	LEU	2.8
1	B	229	ILE	2.8
1	B	24	LYS	2.8
1	B	897	SER	2.8
1	A	403	THR	2.7
1	A	146	LYS	2.7
1	A	550	LYS	2.7
1	B	21	LYS	2.7
1	B	564	ILE	2.7
1	A	21	LYS	2.7
1	A	113	ASP	2.7
1	A	201	ALA	2.7
1	B	209	ASP	2.7
1	A	565	GLU	2.6
1	A	19	VAL	2.6
1	A	659	VAL	2.6
1	A	656	ASN	2.6
1	A	22	ILE	2.6
1	B	27	TYR	2.6
1	A	354	GLU	2.6
1	A	707	MET	2.6
1	B	355	ILE	2.6
1	A	358	ARG	2.5
1	A	31	LEU	2.5
1	B	153	THR	2.5
1	B	155	SER	2.5
1	B	234	THR	2.5
1	B	237	CYS	2.5
1	A	682	SER	2.4
1	B	880	LYS	2.4
1	A	347	GLU	2.4

Continued on next page...

Continued from previous page...

Mol	Chain	Res	Type	RSRZ
1	A	124	SER	2.4
1	B	603	SER	2.4
1	A	147	LYS	2.4
1	B	318	LEU	2.4
1	B	888	VAL	2.4
1	A	657	ASP	2.4
1	B	565	GLU	2.4
1	A	686	TYR	2.3
1	A	675	GLY	2.3
1	B	350	HIS	2.3
1	A	200	ASP	2.3
1	B	145	ASP	2.3
1	B	551	ARG	2.3
1	A	223	HIS	2.3
1	A	396	ARG	2.3
1	B	233	GLY	2.3
1	B	887	ASN	2.3
1	A	841	VAL	2.3
1	B	19	VAL	2.3
1	B	262	GLY	2.3
1	B	550	LYS	2.3
1	B	357	THR	2.2
1	A	799	GLN	2.2
1	B	104	ASN	2.2
1	B	294	GLU	2.2
1	A	706	ASN	2.2
1	B	358	ARG	2.2
1	A	100	GLU	2.2
1	A	709	TRP	2.2
1	A	199	TYR	2.2
1	B	657	ASP	2.2
1	A	677	ILE	2.1
1	A	803	ILE	2.1
1	A	798	LEU	2.1
1	B	660	GLY	2.1
1	B	211	VAL	2.1
1	B	18	GLN	2.1
1	A	121	GLY	2.1
1	B	55	PHE	2.1
1	A	665	CYS	2.1
1	A	676	LEU	2.1
1	B	794	ARG	2.1

Continued on next page...

Continued from previous page...

Mol	Chain	Res	Type	RSRZ
1	B	25	TYR	2.1
1	A	134	LEU	2.1
1	A	549	LYS	2.1
1	B	146	LYS	2.1
1	A	681	GLY	2.1
1	B	601	THR	2.0
1	B	852	ASP	2.0
1	B	299	GLY	2.0
1	B	593	GLY	2.0
1	B	595	ARG	2.0

6.2 Non-standard residues in protein, DNA, RNA chains ⓘ

There are no non-standard protein/DNA/RNA residues in this entry.

6.3 Carbohydrates ⓘ

There are no carbohydrates in this entry.

6.4 Ligands ⓘ

In the following table, the Atoms column lists the number of modelled atoms in the group and the number defined in the chemical component dictionary. LLDF column lists the quality of electron density of the group with respect to its neighbouring residues in protein, DNA or RNA chains. The B-factors column lists the minimum, median, 95th percentile and maximum values of B factors of atoms in the group. The column labelled 'Q< 0.9' lists the number of atoms with occupancy less than 0.9.

Mol	Type	Chain	Res	Atoms	RSR	LLDF	B-factors(Å ²)	Q<0.9
5	CIT	B	1007	13/13	0.23	3.71	104,104,105,105	0
2	BGC	B	1001	12/12	0.44	2.28	43,46,49,49	0
2	BGC	A	1003	12/12	0.35	1.00	29,34,35,38	0
3	ONZ	A	1004	15/15	0.26	0.77	27,35,39,39	0
2	BGC	B	1003	12/12	0.27	0.75	30,33,34,36	0
2	BGC	A	1001	12/12	0.21	0.63	40,43,44,45	0
3	ONZ	B	1002	15/15	0.28	0.52	53,55,57,58	0
4	NA	B	1005	1/1	0.19	0.37	56,56,56,56	0
3	ONZ	B	1004	15/15	0.23	0.11	29,34,38,38	0
3	ONZ	A	1002	15/15	0.12	-1.17	48,49,50,50	0
4	NA	A	1006	1/1	0.12	-1.64	46,46,46,46	0

Continued on next page...

Continued from previous page...

Mol	Type	Chain	Res	Atoms	RSR	LLDF	B-factors(\AA^2)	Q<0.9
4	NA	B	1006	1/1	0.07	-1.72	47,47,47,47	0
4	NA	A	1005	1/1	0.10	-2.05	58,58,58,58	0

6.5 Other polymers ⓘ

There are no such residues in this entry.