



wwPDB X-ray Structure Validation Summary Report

Feb 26, 2014 – 05:17 PM GMT

PDB ID : 1FC0
Title : HUMAN LIVER GLYCOGEN PHOSPHORYLASE COMPLEXED WITH N-ACETYL-BETA-D-GLUCOPYRANOSYLAMINE
Authors : Rath, V.L.; Ammirati, M.; LeMotte, P.K.; Fennell, K.F.; Mansour, M.M.; Danley, D.E.; Hynes, T.R.; Schulte, G.K.; Wasilko, D.J.; Pandit, J.
Deposited on : 2000-07-17
Resolution : 2.40 Å(reported)

This is a wwPDB validation summary report for a publicly released PDB entry.
We welcome your comments at validation@mail.wwpdb.org
A user guide is available at <http://wwpdb.org/ValidationPDFNotes.html>

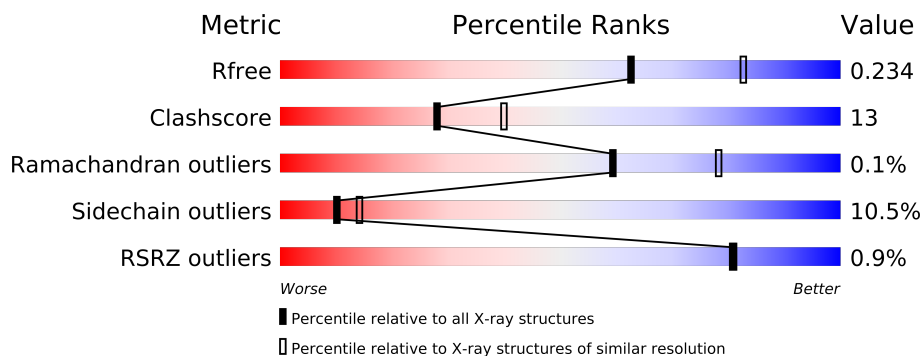
The following versions of software and data (see [references](#)) were used in the production of this report:

MolProbity : 4.02b-467
Mogul : 1.15 2013
Xtriage (Phenix) : dev-1323
EDS : stable22639
Percentile statistics : 21963
Refmac : 5.8.0049
CCP4 : 6.3.0 (Settle)
Ideal geometry (proteins) : Engh & Huber (2001)
Ideal geometry (DNA, RNA) : Parkinson et. al. (1996)
Validation Pipeline (wwPDB-VP) : stable22683

1 Overall quality at a glance

The reported resolution of this entry is 2.40 Å.

Percentile scores (ranging between 0-100) for global validation metrics of the entry are shown in the following graphic. The table shows the number of entries on which the scores are based.



Metric	Whole archive (#Entries)	Similar resolution (#Entries, resolution range(Å))
R_{free}	66092	2207 (2.40-2.40)
Clashscore	79885	2789 (2.40-2.40)
Ramachandran outliers	78287	2736 (2.40-2.40)
Sidechain outliers	78261	2737 (2.40-2.40)
RSRZ outliers	66119	2210 (2.40-2.40)

The table below summarises the geometric issues observed across the polymeric chains and their fit to the electron density. The red, orange, yellow and green segments on the lower bar indicate the fraction of residues that contain outliers for ≥ 3 , 2, 1 and 0 types of geometric quality criteria. The upper red bar (where present) indicates the fraction of residues that have poor fit to the electron density.

Mol	Chain	Length	Quality of chain
1	A	846	
1	B	846	

2 Entry composition i

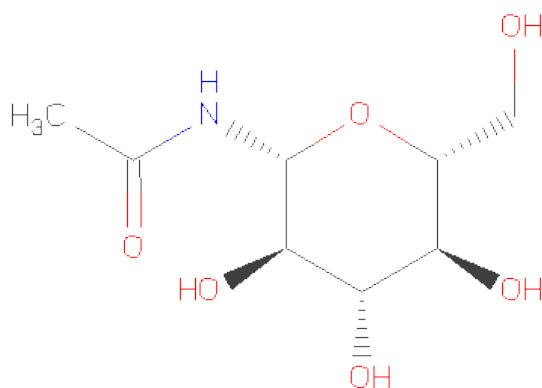
There are 4 unique types of molecules in this entry. The entry contains 13169 atoms, of which 0 are hydrogen and 0 are deuterium.

In the tables below, the ZeroOcc column contains the number of atoms modelled with zero occupancy, the AltConf column contains the number of residues with at least one atom in alternate conformation and the Trace column contains the number of residues modelled with at most 2 atoms.

- Molecule 1 is a protein called GLYCOGEN PHOSPHORYLASE, LIVER FORM.

Mol	Chain	Residues	Atoms					ZeroOcc	AltConf	Trace
1	A	792	Total	C	N	O	S	0	0	0
			6425	4129	1090	1177	29			
1	B	793	Total	C	N	O	S	0	0	0
			6429	4131	1091	1178	29			

- Molecule 2 is SUGAR (1-N-ACETYL-BETA-D-GLUCOSAMINE) (three-letter code: NBG) (formula: $C_8H_{15}NO_6$).



Mol	Chain	Residues	Atoms				ZeroOcc	AltConf
2	A	1	Total	C	N	O	0	0
			15	8	1	6		
2	B	1	Total	C	N	O	0	0
			15	8	1	6		

- Molecule 3 is PYRIDOXAL-5'-PHOSPHATE (three-letter code: PLP) (formula: $C_8H_{10}NO_6P$).



Mol	Chain	Residues	Atoms					ZeroOcc	AltConf
3	A	1	Total	C	N	O	P	0	0
			15	8	1	5	1		
3	B	1	Total	C	N	O	P	0	0
			15	8	1	5	1		

- Molecule 4 is water.

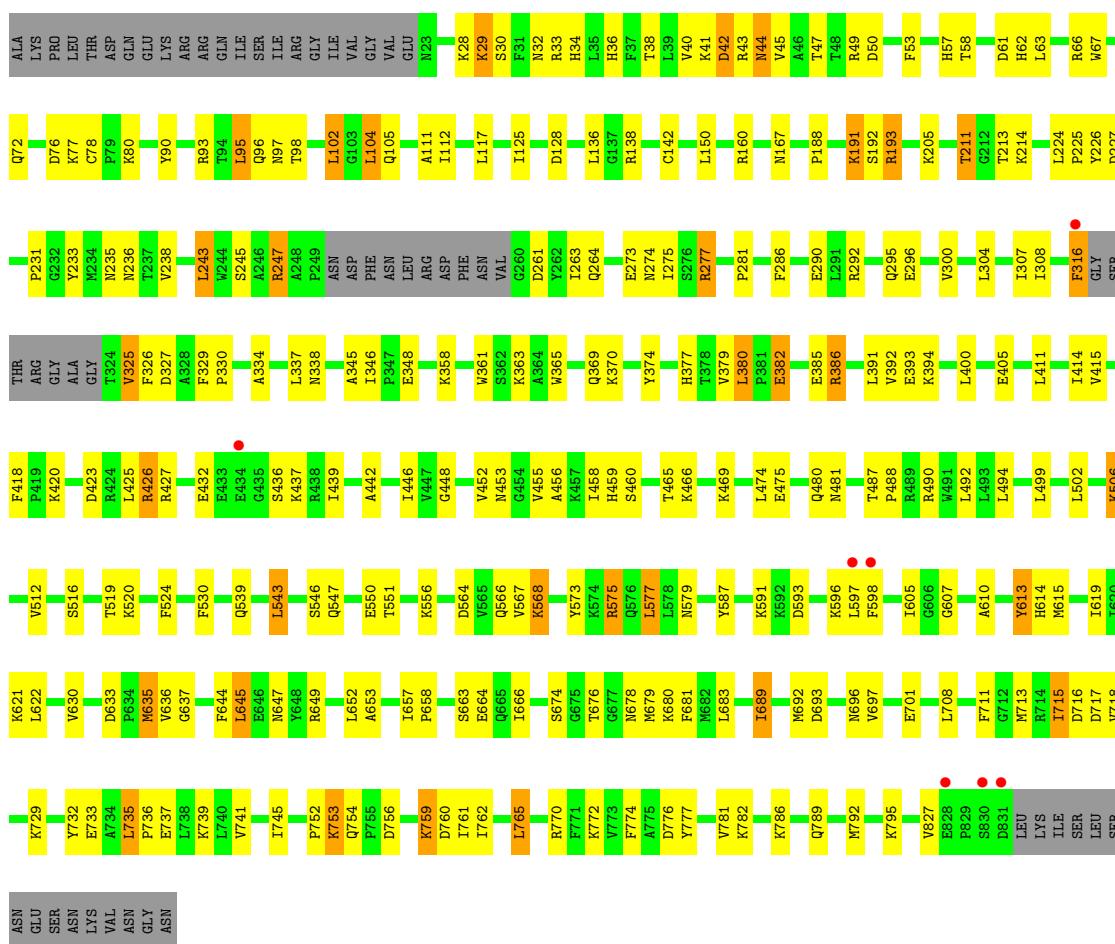
Mol	Chain	Residues	Atoms		ZeroOcc	AltConf
4	A	151	Total	O	0	0
			151	151		
4	B	104	Total	O	0	0
			104	104		

3 Residue-property plots

These plots are drawn for all protein, RNA and DNA chains in the entry. The first graphic for a chain summarises the proportions of errors displayed in the second graphic. The second graphic shows the sequence view annotated by issues in geometry and electron density. Residues are color-coded according to the number of geometric quality criteria for which they contain at least one outlier: green = 0, yellow = 1, orange = 2 and red = 3 or more. A red dot above a residue indicates a poor fit to the electron density ($RSRZ > 2$). Stretches of 2 or more consecutive residues without any outlier are shown as a green connector. Residues present in the sample, but not in the model, are shown in grey.

• Molecule 1: GLYCOGEN PHOSPHORYLASE, LIVER FORM

Chain A: 



• Molecule 1: GLYCOGEN PHOSPHORYLASE, LIVER FORM

Chain B: 





4 Data and refinement statistics

Property	Value	Source
Space group	P 31	Depositor
Cell constants a, b, c, α , β , γ	124.00Å 124.00Å 122.28Å 90.00° 90.00° 120.00°	Depositor
Resolution (Å)	30.00 – 2.40 19.58 – 2.40	Depositor EDS
% Data completeness (in resolution range)	95.1 (30.00-2.40) 95.2 (19.58-2.40)	Depositor EDS
R_{merge}	0.05	Depositor
R_{sym}	(Not available)	Depositor
$\langle I/\sigma(I) \rangle$ ¹	4.76 (at 2.41Å)	Xtriage
Refinement program	CNS 0.5	Depositor
R, R_{free}	0.198 , 0.235 0.195 , 0.234	Depositor DCC
R_{free} test set	7804 reflections (10.00%)	DCC
Wilson B-factor (Å ²)	30.5	Xtriage
Anisotropy	0.394	Xtriage
Bulk solvent k_{sol} (e/Å ³), B_{sol} (Å ²)	0.35 , 34.3	EDS
Estimated twinning fraction	0.025 for -h,-k,l 0.082 for h,-h-k,-l 0.033 for -k,-h,-l	Xtriage
L-test for twinning	$\langle L \rangle = 0.46$, $\langle L^2 \rangle = 0.28$	Xtriage
Outliers	0 of 81694 reflections	Xtriage
F_o, F_c correlation	0.93	EDS
Total number of atoms	13169	wwPDB-VP
Average B, all atoms (Å ²)	35.0	wwPDB-VP

Xtriage's analysis on translational NCS is as follows: *The largest off-origin peak in the Patterson function is 2.81% of the height of the origin peak. No significant pseudotranslation is detected.*

¹Intensities estimated from amplitudes.

5 Model quality

5.1 Standard geometry

Bond lengths and bond angles in the following residue types are not validated in this section: NBG, PLP

The Z score for a bond length (or angle) is the number of standard deviations the observed value is removed from the expected value. A bond length (or angle) with $|Z| > 5$ is considered an outlier worth inspection. RMSZ is the root-mean-square of all Z scores of the bond lengths (or angles).

Mol	Chain	Bond lengths		Bond angles	
		RMSZ	$\# Z > 5$	RMSZ	$\# Z > 5$
1	A	0.35	0/6569	0.57	0/8884
1	B	0.34	0/6573	0.56	0/8889
All	All	0.34	0/13142	0.56	0/17773

There are no bond length outliers.

There are no bond angle outliers.

There are no chirality outliers.

There are no planarity outliers.

5.2 Close contacts

In the following table, the Non-H and H(model) columns list the number of non-hydrogen atoms and hydrogen atoms in the chain respectively. The H(added) column lists the number of hydrogens added by MolProbity. The Clashes column lists the number of clashes within the asymmetric unit, and the number in parentheses is this value normalized per 1000 atoms of the molecule in the chain. The Symm-Clashes column gives symmetry related clashes, in the same way as for the Clashes column.

Mol	Chain	Non-H	H(model)	H(added)	Clashes	Symm-Clashes
1	A	6425	0	6419	154	0
1	B	6429	0	6422	175	0
2	A	15	0	15	0	0
2	B	15	0	15	0	0
3	A	15	0	6	0	0
3	B	15	0	7	0	0
4	A	151	0	0	6	0
4	B	104	0	0	2	0
All	All	13169	0	12884	328	0

Clashscore is defined as the number of clashes calculated for the entry per 1000 atoms (including hydrogens) of the entry. The overall clashscore for this entry is 13.

The worst 5 of 328 close contacts within the same asymmetric unit are listed below.

Atom-1	Atom-2	Distance(Å)	Clash(Å)
1:B:1274:ASN:ND2	1:B:1277:ARG:HH11	1.61	0.97
1:B:1713:MET:HB2	1:B:1717:ASP:HB2	1.47	0.95
1:A:547:GLN:O	1:A:551:THR:HG23	1.66	0.95
1:A:713:MET:HB2	1:A:717:ASP:HB2	1.47	0.94
1:A:274:ASN:ND2	1:A:277:ARG:HH11	1.66	0.94

There are no symmetry-related clashes.

5.3 Torsion angles

5.3.1 Protein backbone ⓘ

In the following table, the Percentiles column shows the percent Ramachandran outliers of the chain as a percentile score with respect to all X-ray entries followed by that with respect to entries of similar resolution. The Analysed column shows the number of residues for which the backbone conformation was analysed, and the total number of residues.

Mol	Chain	Analysed	Favoured	Allowed	Outliers	Percentiles	
1	A	786/846 (93%)	739 (94%)	46 (6%)	1 (0%)	59	78
1	B	787/846 (93%)	738 (94%)	48 (6%)	1 (0%)	59	78
All	All	1573/1692 (93%)	1477 (94%)	94 (6%)	2 (0%)	59	78

All (2) Ramachandran outliers are listed below:

Mol	Chain	Res	Type
1	A	95	LEU
1	B	1095	LEU

5.3.2 Protein sidechains ⓘ

In the following table, the Percentiles column shows the percent sidechain outliers of the chain as a percentile score with respect to all X-ray entries followed by that with respect to entries of similar resolution. The Analysed column shows the number of residues for which the sidechain conformation was analysed, and the total number of residues.

Mol	Chain	Analysed	Rotameric	Outliers	Percentiles	
1	A	693/739 (94%)	618 (89%)	75 (11%)	9	13
1	B	693/739 (94%)	622 (90%)	71 (10%)	11	15
All	All	1386/1478 (94%)	1240 (90%)	146 (10%)	10	14

5 of 146 residues with a non-rotameric sidechain are listed below:

Mol	Chain	Res	Type
1	A	735	LEU
1	B	1102	LEU
1	B	1733	GLU
1	A	753	LYS
1	A	795	LYS

Some sidechains can be flipped to improve hydrogen bonding and reduce clashes. 5 of 48 such sidechains are listed below:

Mol	Chain	Res	Type
1	A	541	ASN
1	B	1032	ASN
1	B	1566	GLN
1	A	566	GLN
1	A	579	ASN

5.3.3 RNA ⓘ

There are no RNA chains in this entry.

5.4 Non-standard residues in protein, DNA, RNA chains ⓘ

There are no non-standard protein/DNA/RNA residues in this entry.

5.5 Carbohydrates ⓘ

There are no carbohydrates in this entry.

5.6 Ligand geometry ⓘ

4 ligands are modelled in this entry.

In the following table, the Counts columns list the number of bonds (or angles) for which Mogul statistics could be retrieved, the number of bonds (or angles) that are observed in the model and the number of bonds (or angles) that are defined in the chemical component dictionary. The Link column lists molecule types, if any, to which the group is linked. The Z score for a bond length (or angle) is the number of standard deviations the observed value is removed from the expected value. A bond length (or angle) with $|Z| > 2$ is considered an outlier worth inspection. RMSZ is the root-mean-square of all Z scores of the bond lengths (or angles).

Mol	Type	Chain	Res	Link	Bond lengths			Bond angles		
					Counts	RMSZ	# $ Z > 2$	Counts	RMSZ	# $ Z > 2$
3	PLP	A	860	1	14,15,16	1.80	2 (14%)	20,22,23	1.27	1 (5%)
2	NBG	A	861	-	15,15,15	1.24	1 (6%)	21,21,21	1.58	4 (19%)
3	PLP	B	1860	1	14,15,16	1.42	3 (21%)	20,22,23	1.06	3 (15%)
2	NBG	B	1861	-	15,15,15	1.50	2 (13%)	21,21,21	1.29	3 (14%)

In the following table, the Chirals column lists the number of chiral outliers, the number of chiral centers analysed, the number of these observed in the model and the number defined in the chemical component dictionary. Similar counts are reported in the Torsion and Rings columns. '-' means no outliers of that kind were identified.

Mol	Type	Chain	Res	Link	Chirals	Torsions	Rings
3	PLP	A	860	1	-	0/6/6/8	0/1/1/1
2	NBG	A	861	-	-	0/5/26/26	0/1/1/1
3	PLP	B	1860	1	-	0/6/6/8	0/1/1/1
2	NBG	B	1861	-	-	0/5/26/26	0/1/1/1

The worst 5 of 8 bond length outliers are listed below:

Mol	Chain	Res	Type	Atoms	Z	Observed(Å)	Ideal(Å)
3	A	860	PLP	C3-C2	-5.27	1.37	1.40
2	B	1861	NBG	C2-C1	3.91	1.56	1.52
2	A	861	NBG	C2-C1	3.72	1.56	1.52
2	B	1861	NBG	C1-N1	2.92	1.46	1.43
3	B	1860	PLP	C3-C2	-2.65	1.38	1.40

The worst 5 of 11 bond angle outliers are listed below:

Mol	Chain	Res	Type	Atoms	Z	Observed(°)	Ideal(°)
2	A	861	NBG	C5-O5-C1	4.63	118.93	112.50
2	B	1861	NBG	C5-O5-C1	3.89	117.90	112.50
2	A	861	NBG	O5-C1-C2	2.77	112.19	109.70
2	A	861	NBG	C3-C2-C1	2.73	114.00	109.91
2	A	861	NBG	C2-C1-N1	-2.40	108.19	111.44

There are no chirality outliers.

There are no torsion outliers.

There are no ring outliers.

5.7 Other polymers ⓘ

There are no such residues in this entry.

5.8 Polymer linkage issues

There are no chain breaks in this entry.

6 Fit of model and data ⓘ

6.1 Protein, DNA and RNA chains ⓘ

In the following table, the column labelled ‘#RSRZ> 2’ contains the number (and percentage) of RSRZ outliers, followed by percent RSRZ outliers for the chain as percentile scores relative to all X-ray entries and entries of similar resolution. The OWAB column contains the minimum, median, 95th percentile and maximum values of the occupancy-weighted average B-factor per residue. The column labelled ‘Q< 0.9’ lists the number of (and percentage) of residues with an average occupancy less than 0.9.

Mol	Chain	Analysed	<RSRZ>	#RSRZ>2	OWAB(Å ²)	Q<0.9
1	A	792/846 (93%)	-0.42	7 (0%) 81 81	15, 31, 57, 101	0
1	B	793/846 (93%)	-0.37	8 (1%) 79 79	16, 32, 60, 101	0
All	All	1585/1692 (93%)	-0.40	15 (0%) 81 81	15, 32, 59, 101	0

The worst 5 of 15 RSRZ outliers are listed below:

Mol	Chain	Res	Type	RSRZ
1	B	1831	ASP	5.0
1	A	831	ASP	4.6
1	B	1316	PHE	4.5
1	B	1420	LYS	4.0
1	A	598	PHE	3.7

6.2 Non-standard residues in protein, DNA, RNA chains ⓘ

There are no non-standard protein/DNA/RNA residues in this entry.

6.3 Carbohydrates ⓘ

There are no carbohydrates in this entry.

6.4 Ligands ⓘ

In the following table, the Atoms column lists the number of modelled atoms in the group and the number defined in the chemical component dictionary. LLDF column lists the quality of electron density of the group with respect to its neighbouring residues in protein, DNA or RNA chains. The B-factors column lists the minimum, median, 95th percentile and maximum values of B factors of atoms in the group. The column labelled ‘Q< 0.9’ lists the number of atoms with occupancy less than 0.9.

Mol	Type	Chain	Res	Atoms	RSR	LLDF	B-factors(\AA^2)	Q<0.9
2	NBG	B	1861	15/15	0.13	0.83	17,31,35,38	0
2	NBG	A	861	15/15	0.11	-0.22	14,23,31,32	0
3	PLP	B	1860	15/16	0.10	-0.75	14,19,31,34	0
3	PLP	A	860	15/16	0.09	-1.02	3,13,26,31	0

6.5 Other polymers

There are no such residues in this entry.