



# wwPDB X-ray Structure Validation Summary Report

Feb 27, 2014 – 12:40 PM GMT

PDB ID : 4FC7  
Title : Studies on DCR shed new light on peroxisomal beta-oxidation: Crystal structure of the ternary complex of pDCR  
Authors : Hua, T.; Wu, D.; Wang, J.; Shaw, N.; Liu, Z.-J.  
Deposited on : 2012-05-24  
Resolution : 1.84 Å(reported)

This is a wwPDB validation summary report for a publicly released PDB entry.

We welcome your comments at [validation@mail.wwpdb.org](mailto:validation@mail.wwpdb.org)

A user guide is available at <http://wwpdb.org/ValidationPDFNotes.html>

---

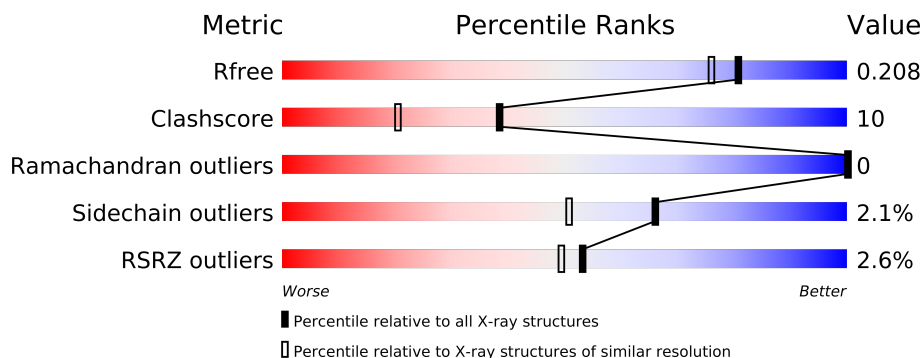
The following versions of software and data (see [references](#)) were used in the production of this report:

MolProbity	:	4.02b-467
Mogul	:	1.15 2013
Xtriage (Phenix)	:	dev-1323
EDS	:	stable22639
Percentile statistics	:	21963
Refmac	:	5.8.0049
CCP4	:	6.3.0 (Settle)
Ideal geometry (proteins)	:	Engh & Huber (2001)
Ideal geometry (DNA, RNA)	:	Parkinson et. al. (1996)
Validation Pipeline (wwPDB-VP)	:	stable22683

# 1 Overall quality at a glance

The reported resolution of this entry is 1.84 Å.

Percentile scores (ranging between 0-100) for global validation metrics of the entry are shown in the following graphic. The table shows the number of entries on which the scores are based.



Metric	Whole archive (#Entries)	Similar resolution (#Entries, resolution range(Å))
$R_{free}$	66092	1857 (1.86-1.82)
Clashscore	79885	2149 (1.86-1.82)
Ramachandran outliers	78287	2124 (1.86-1.82)
Sidechain outliers	78261	2125 (1.86-1.82)
RSRZ outliers	66119	1857 (1.86-1.82)

The table below summarises the geometric issues observed across the polymeric chains and their fit to the electron density. The red, orange, yellow and green segments on the lower bar indicate the fraction of residues that contain outliers for  $\geq 3$ , 2, 1 and 0 types of geometric quality criteria. The upper red bar (where present) indicates the fraction of residues that have poor fit to the electron density.

Mol	Chain	Length	Quality of chain
1	A	277	
1	B	277	
1	C	277	
1	D	277	

The following table lists non-polymeric compounds that are outliers for geometric or electron-density-fit criteria:

Mol	Type	Chain	Res	Geometry	Electron density
3	COA	C	402	-	X

## 2 Entry composition i

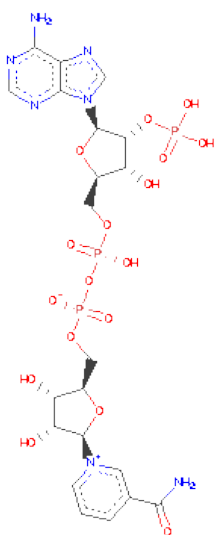
There are 4 unique types of molecules in this entry. The entry contains 9346 atoms, of which 0 are hydrogen and 0 are deuterium.

In the tables below, the ZeroOcc column contains the number of atoms modelled with zero occupancy, the AltConf column contains the number of residues with at least one atom in alternate conformation and the Trace column contains the number of residues modelled with at most 2 atoms.

- Molecule 1 is a protein called Peroxisomal 2,4-dienoyl-CoA reductase.

Mol	Chain	Residues	Atoms					ZeroOcc	AltConf	Trace
1	A	274	Total	C	N	O	S	0	3	0
			2046	1296	371	366	13			
1	B	276	Total	C	N	O	S	0	1	0
			2051	1296	374	369	12			
1	C	276	Total	C	N	O	S	0	1	0
			2052	1297	374	369	12			
1	D	272	Total	C	N	O	S	0	1	0
			2021	1276	369	364	12			

- Molecule 2 is NADP NICOTINAMIDE-ADENINE-DINUCLEOTIDEPHOSPHATE (three-letter code: NAP) (formula:  $C_{21}H_{28}N_7O_{17}P_3$ ).



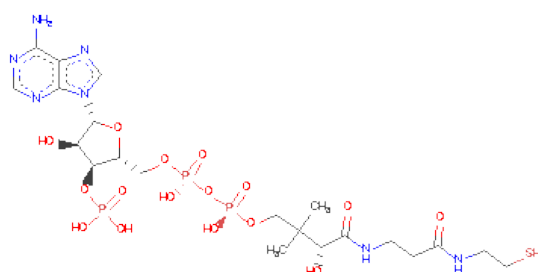
Mol	Chain	Residues	Atoms					ZeroOcc	AltConf
2	A	1	Total	C	N	O	P	0	0
			48	21	7	17	3		
2	B	1	Total	C	N	O	P	0	0
			48	21	7	17	3		

*Continued on next page...*

*Continued from previous page...*

Mol	Chain	Residues	Atoms					ZeroOcc	AltConf
2	C	1	Total	C	N	O	P	0	0
			48	21	7	17	3		
2	D	1	Total	C	N	O	P	0	0
			48	21	7	17	3		

- Molecule 3 is COENZYME A (three-letter code: COA) (formula:  $C_{21}H_{36}N_7O_{16}P_3S$ ).



Mol	Chain	Residues	Atoms						ZeroOcc	AltConf
3	A	1	Total	C	N	O	P	S	0	0
			48	21	7	16	3	1		
3	B	1	Total	C	N	O	P	S	0	0
			48	21	7	16	3	1		
3	C	1	Total	C	N	O	P	S	0	0
			48	21	7	16	3	1		
3	D	1	Total	C	N	O	P	S	0	0
			48	21	7	16	3	1		

- Molecule 4 is water.

Mol	Chain	Residues	Atoms		ZeroOcc	AltConf
4	A	216	Total	O	0	0
			216	216		
4	B	176	Total	O	0	0
			176	176		
4	C	206	Total	O	0	0
			206	206		

*Continued on next page...*

*Continued from previous page...*

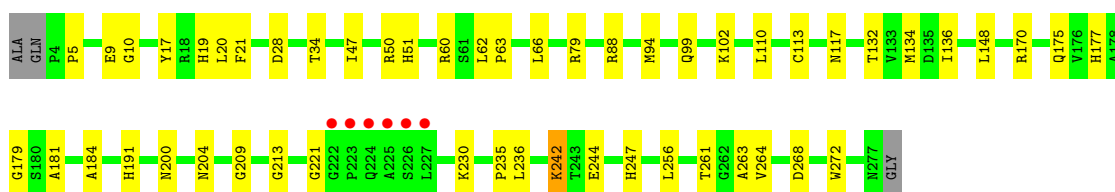
Mol	Chain	Residues	Atoms		ZeroOcc	AltConf
4	D	194	Total 194	O 194	0	0

### 3 Residue-property plots

These plots are drawn for all protein, RNA and DNA chains in the entry. The first graphic for a chain summarises the proportions of errors displayed in the second graphic. The second graphic shows the sequence view annotated by issues in geometry and electron density. Residues are color-coded according to the number of geometric quality criteria for which they contain at least one outlier: green = 0, yellow = 1, orange = 2 and red = 3 or more. A red dot above a residue indicates a poor fit to the electron density ( $RSRZ > 2$ ). Stretches of 2 or more consecutive residues without any outlier are shown as a green connector. Residues present in the sample, but not in the model, are shown in grey.

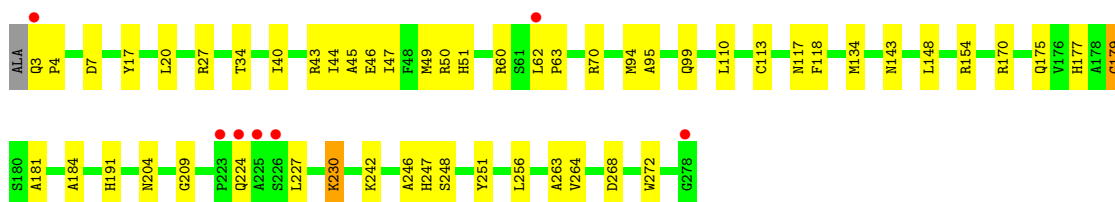
- Molecule 1: Peroxisomal 2,4-dienoyl-CoA reductase

Chain A:



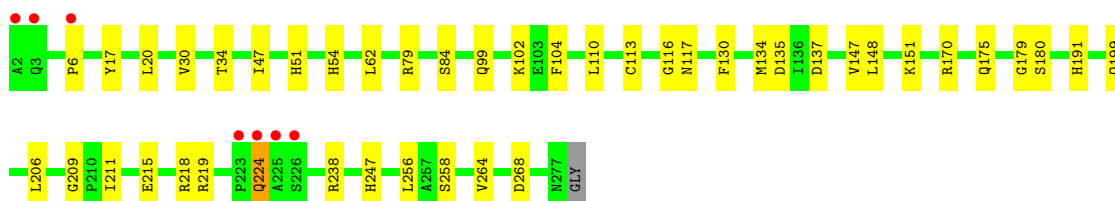
- Molecule 1: Peroxisomal 2,4-dienoyl-CoA reductase

Chain B:



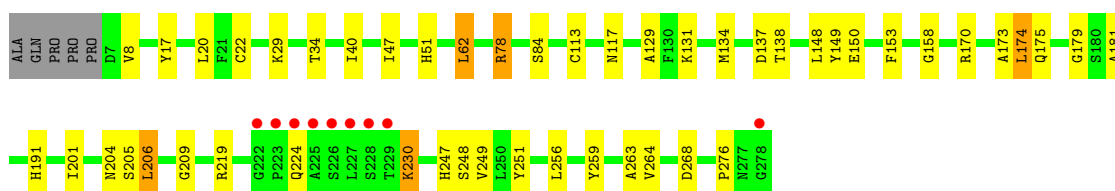
- Molecule 1: Peroxisomal 2,4-dienoyl-CoA reductase

Chain C:



- Molecule 1: Peroxisomal 2,4-dienoyl-CoA reductase

Chain D:



## 4 Data and refinement statistics

Property	Value	Source
Space group	P 21 21 21	Depositor
Cell constants a, b, c, $\alpha$ , $\beta$ , $\gamma$	88.10Å 94.50Å 130.16Å 90.00° 90.00° 90.00°	Depositor
Resolution (Å)	38.92 – 1.84 38.92 – 1.84	Depositor EDS
% Data completeness (in resolution range)	97.9 (38.92-1.84) 97.9 (38.92-1.84)	Depositor EDS
$R_{merge}$	(Not available)	Depositor
$R_{sym}$	(Not available)	Depositor
$\langle I/\sigma(I) \rangle$ <sup>1</sup>	3.07 (at 1.84Å)	Xtriage
Refinement program	REFMAC 5.6.0117	Depositor
R, $R_{free}$	0.167 , 0.209 0.167 , 0.208	Depositor DCC
$R_{free}$ test set	4619 reflections (5.24%)	DCC
Wilson B-factor (Å <sup>2</sup> )	16.8	Xtriage
Anisotropy	0.038	Xtriage
Bulk solvent $k_{sol}$ (e/Å <sup>3</sup> ), $B_{sol}$ (Å <sup>2</sup> )	0.37 , 32.5	EDS
Estimated twinning fraction	No twinning to report.	Xtriage
L-test for twinning	$\langle  L  \rangle = 0.48$ , $\langle L^2 \rangle = 0.31$	Xtriage
Outliers	0 of 92829 reflections	Xtriage
$F_o, F_c$ correlation	0.96	EDS
Total number of atoms	9346	wwPDB-VP
Average B, all atoms (Å <sup>2</sup> )	18.0	wwPDB-VP

Xtriage's analysis on translational NCS is as follows: *The largest off-origin peak in the Patterson function is 3.01% of the height of the origin peak. No significant pseudotranslation is detected.*

<sup>1</sup>Intensities estimated from amplitudes.

## 5 Model quality

### 5.1 Standard geometry

Bond lengths and bond angles in the following residue types are not validated in this section: COA, NAP

The Z score for a bond length (or angle) is the number of standard deviations the observed value is removed from the expected value. A bond length (or angle) with  $|Z| > 5$  is considered an outlier worth inspection. RMSZ is the root-mean-square of all Z scores of the bond lengths (or angles).

Mol	Chain	Bond lengths		Bond angles	
		RMSZ	# $ Z  > 5$	RMSZ	# $ Z  > 5$
1	A	1.15	1/2098 (0.0%)	1.04	3/2850 (0.1%)
1	B	1.15	2/2097 (0.1%)	1.06	5/2849 (0.2%)
1	C	1.16	1/2098 (0.0%)	1.03	5/2851 (0.2%)
1	D	1.10	0/2064	1.04	6/2801 (0.2%)
All	All	1.14	4/8357 (0.0%)	1.04	19/11351 (0.2%)

All (4) bond length outliers are listed below:

Mol	Chain	Res	Type	Atoms	Z	Observed(Å)	Ideal(Å)
1	A	272	TRP	CD2-CE2	5.62	1.48	1.41
1	B	179	GLY	C-O	5.55	1.32	1.23
1	C	258	SER	CA-CB	5.19	1.60	1.52
1	B	272	TRP	CD2-CE2	5.02	1.47	1.41

The worst 5 of 19 bond angle outliers are listed below:

Mol	Chain	Res	Type	Atoms	Z	Observed(°)	Ideal(°)
1	C	238	ARG	NE-CZ-NH1	-5.99	117.31	120.30
1	C	206	LEU	CA-CB-CG	-5.91	101.71	115.30
1	D	62	LEU	CB-CG-CD2	-5.89	100.99	111.00
1	B	50	ARG	NE-CZ-NH2	-5.84	117.38	120.30
1	D	259	TYR	CD1-CE1-CZ	-5.68	114.69	119.80

There are no chirality outliers.

There are no planarity outliers.



## 5.2 Close contacts ⓘ

In the following table, the Non-H and H(model) columns list the number of non-hydrogen atoms and hydrogen atoms in the chain respectively. The H(added) column lists the number of hydrogens added by MolProbity. The Clashes column lists the number of clashes within the asymmetric unit, and the number in parentheses is this value normalized per 1000 atoms of the molecule in the chain. The Symm-Clashes column gives symmetry related clashes, in the same way as for the Clashes column.

Mol	Chain	Non-H	H(model)	H(added)	Clashes	Symm-Clashes
1	A	2046	0	2087	49	0
1	B	2051	0	2081	48	0
1	C	2052	0	2083	35	0
1	D	2021	0	2052	46	0
2	A	48	0	25	2	0
2	B	48	0	25	0	0
2	C	48	0	25	0	0
2	D	48	0	25	0	0
3	A	48	0	32	0	0
3	B	48	0	32	0	0
3	C	48	0	32	1	0
3	D	48	0	32	2	0
4	A	216	0	0	17	0
4	B	176	0	0	14	0
4	C	206	0	0	7	0
4	D	194	0	0	13	0
All	All	9346	0	8531	168	0

Clashscore is defined as the number of clashes calculated for the entry per 1000 atoms (including hydrogens) of the entry. The overall clashscore for this entry is 10.

The worst 5 of 168 close contacts within the same asymmetric unit are listed below.

Atom-1	Atom-2	Distance(Å)	Clash(Å)
1:B:143:ASN:HB3	4:B:674:HOH:O	1.39	1.23
1:B:70:ARG:HB3	4:B:676:HOH:O	1.45	1.13
1:D:138:THR:HB	4:D:691:HOH:O	1.45	1.11
1:A:200:ASN:HB3	4:A:555:HOH:O	1.58	1.03
1:A:132:THR:O	1:A:136[A]:ILE:HD13	1.59	1.03

There are no symmetry-related clashes.

## 5.3 Torsion angles

### 5.3.1 Protein backbone ⓘ

In the following table, the Percentiles column shows the percent Ramachandran outliers of the chain as a percentile score with respect to all X-ray entries followed by that with respect to entries of similar resolution. The Analysed column shows the number of residues for which the backbone conformation was analysed, and the total number of residues.

Mol	Chain	Analysed	Favoured	Allowed	Outliers	Percentiles	
1	A	275/277 (99%)	270 (98%)	5 (2%)	0	100	100
1	B	275/277 (99%)	270 (98%)	5 (2%)	0	100	100
1	C	275/277 (99%)	271 (98%)	4 (2%)	0	100	100
1	D	271/277 (98%)	266 (98%)	5 (2%)	0	100	100
All	All	1096/1108 (99%)	1077 (98%)	19 (2%)	0	100	100

There are no Ramachandran outliers to report.

### 5.3.2 Protein sidechains ⓘ

In the following table, the Percentiles column shows the percent sidechain outliers of the chain as a percentile score with respect to all X-ray entries followed by that with respect to entries of similar resolution. The Analysed column shows the number of residues for which the sidechain conformation was analysed, and the total number of residues.

Mol	Chain	Analysed	Rotameric	Outliers	Percentiles	
1	A	214/212 (101%)	210 (98%)	4 (2%)	69	55
1	B	213/212 (100%)	210 (99%)	3 (1%)	78	68
1	C	213/212 (100%)	210 (99%)	3 (1%)	78	68
1	D	209/212 (99%)	201 (96%)	8 (4%)	44	22
All	All	849/848 (100%)	831 (98%)	18 (2%)	66	51

5 of 18 residues with a non-rotameric sidechain are listed below:

Mol	Chain	Res	Type
1	C	199	GLN
1	C	224	GLN
1	D	150	GLU
1	B	230	LYS
1	C	99	GLN

Some sidechains can be flipped to improve hydrogen bonding and reduce clashes. 5 of 27 such sidechains are listed below:

Mol	Chain	Res	Type
1	B	177	HIS
1	C	51	HIS
1	D	204	ASN
1	B	204	ASN
1	A	175	GLN

### 5.3.3 RNA ⓘ

There are no RNA chains in this entry.

### 5.4 Non-standard residues in protein, DNA, RNA chains ⓘ

There are no non-standard protein/DNA/RNA residues in this entry.

### 5.5 Carbohydrates ⓘ

There are no carbohydrates in this entry.

### 5.6 Ligand geometry ⓘ

8 ligands are modelled in this entry.

In the following table, the Counts columns list the number of bonds (or angles) for which Mogul statistics could be retrieved, the number of bonds (or angles) that are observed in the model and the number of bonds (or angles) that are defined in the chemical component dictionary. The Link column lists molecule types, if any, to which the group is linked. The Z score for a bond length (or angle) is the number of standard deviations the observed value is removed from the expected value. A bond length (or angle) with  $|Z| > 2$  is considered an outlier worth inspection. RMSZ is the root-mean-square of all Z scores of the bond lengths (or angles).

Mol	Type	Chain	Res	Link	Bond lengths			Bond angles		
					Counts	RMSZ	$\# Z  > 2$	Counts	RMSZ	$\# Z  > 2$
2	NAP	A	401	-	52,52,52	1.29	7 (13%)	80,80,80	1.87	18 (22%)
3	COA	A	402	-	50,50,50	1.10	3 (6%)	75,75,75	2.68	24 (32%)
2	NAP	B	401	-	52,52,52	1.33	5 (9%)	80,80,80	2.02	18 (22%)
3	COA	B	402	-	50,50,50	1.09	3 (6%)	75,75,75	2.26	22 (29%)
2	NAP	C	401	-	52,52,52	1.41	9 (17%)	80,80,80	1.73	11 (13%)
3	COA	C	402	-	50,50,50	1.21	6 (12%)	75,75,75	2.32	19 (25%)

Mol	Type	Chain	Res	Link	Bond lengths			Bond angles		
					Counts	RMSZ	# Z  > 2	Counts	RMSZ	# Z  > 2
2	NAP	D	401	-	52,52,52	1.12	4 (7%)	80,80,80	1.51	11 (13%)
3	COA	D	402	-	50,50,50	1.35	6 (12%)	75,75,75	1.69	13 (17%)

In the following table, the Chirals column lists the number of chiral outliers, the number of chiral centers analysed, the number of these observed in the model and the number defined in the chemical component dictionary. Similar counts are reported in the Torsion and Rings columns. '-' means no outliers of that kind were identified.

Mol	Type	Chain	Res	Link	Chirals	Torsions	Rings
2	NAP	A	401	-	-	0/35/67/67	0/3/5/5
3	COA	A	402	-	-	0/48/64/64	0/1/3/3
2	NAP	B	401	-	-	0/35/67/67	0/3/5/5
3	COA	B	402	-	-	0/48/64/64	0/1/3/3
2	NAP	C	401	-	-	0/35/67/67	0/3/5/5
3	COA	C	402	-	-	0/48/64/64	0/1/3/3
2	NAP	D	401	-	-	0/35/67/67	0/3/5/5
3	COA	D	402	-	-	0/48/64/64	0/1/3/3

The worst 5 of 43 bond length outliers are listed below:

Mol	Chain	Res	Type	Atoms	Z	Observed(Å)	Ideal(Å)
2	B	401	NAP	C4A-N9A	-4.24	1.31	1.37
2	A	401	NAP	C4N-C3N	4.07	1.46	1.39
2	C	401	NAP	C4A-N9A	-3.99	1.31	1.37
3	D	402	COA	C4A-N9A	-3.81	1.32	1.37
3	D	402	COA	C5A-C4A	3.62	1.48	1.40

The worst 5 of 136 bond angle outliers are listed below:

Mol	Chain	Res	Type	Atoms	Z	Observed(°)	Ideal(°)
3	A	402	COA	C3P-C2P-S1P	-10.24	86.65	113.50
3	A	402	COA	N3A-C2A-N1A	-9.43	120.82	128.71
2	B	401	NAP	N3A-C2A-N1A	-8.79	121.36	128.71
3	C	402	COA	C3P-C2P-S1P	-8.49	91.22	113.50
3	B	402	COA	N3A-C2A-N1A	-8.46	121.64	128.71

There are no chirality outliers.

There are no torsion outliers.

There are no ring outliers.

## 5.7 Other polymers ⓘ

There are no such residues in this entry.

## 5.8 Polymer linkage issues

There are no chain breaks in this entry.

## 6 Fit of model and data

### 6.1 Protein, DNA and RNA chains

In the following table, the column labelled ‘#RSRZ> 2’ contains the number (and percentage) of RSRZ outliers, followed by percent RSRZ outliers for the chain as percentile scores relative to all X-ray entries and entries of similar resolution. The OWAB column contains the minimum, median, 95<sup>th</sup> percentile and maximum values of the occupancy-weighted average B-factor per residue. The column labelled ‘Q< 0.9’ lists the number of (and percentage) of residues with an average occupancy less than 0.9.

Mol	Chain	Analysed	<RSRZ>	#RSRZ>2	OWAB(Å <sup>2</sup> )	Q<0.9
1	A	274/277 (98%)	-0.18	6 (2%) 59 56	6, 14, 30, 53	0
1	B	276/277 (99%)	-0.14	7 (2%) 54 51	8, 17, 31, 56	0
1	C	276/277 (99%)	-0.06	7 (2%) 54 51	6, 15, 33, 63	0
1	D	272/277 (98%)	-0.11	9 (3%) 44 39	7, 16, 33, 55	0
All	All	1098/1108 (99%)	-0.12	29 (2%) 53 49	6, 15, 32, 63	0

The worst 5 of 29 RSRZ outliers are listed below:

Mol	Chain	Res	Type	RSRZ
1	B	225	ALA	5.3
1	C	2	ALA	5.0
1	A	225	ALA	4.6
1	D	225	ALA	4.1
1	A	224	GLN	3.9

### 6.2 Non-standard residues in protein, DNA, RNA chains

There are no non-standard protein/DNA/RNA residues in this entry.

### 6.3 Carbohydrates

There are no carbohydrates in this entry.

### 6.4 Ligands

In the following table, the Atoms column lists the number of modelled atoms in the group and the number defined in the chemical component dictionary. LLDF column lists the quality of electron density of the group with respect to its neighbouring residues in protein, DNA or RNA chains. The B-factors column lists the minimum, median, 95<sup>th</sup> percentile and maximum values of B factors

of atoms in the group. The column labelled 'Q< 0.9' lists the number of atoms with occupancy less than 0.9.

Mol	Type	Chain	Res	Atoms	RSR	LLDF	B-factors( $\text{\AA}^2$ )	Q<0.9
3	COA	C	402	48/48	0.16	2.31	21,25,30,57	0
3	COA	A	402	48/48	0.13	1.39	19,25,33,48	0
3	COA	D	402	48/48	0.14	1.37	21,26,34,40	0
3	COA	B	402	48/48	0.09	-0.03	12,20,27,40	0
2	NAP	B	401	48/48	0.07	-0.83	11,14,18,20	0
2	NAP	D	401	48/48	0.06	-0.94	11,17,20,20	0
2	NAP	C	401	48/48	0.06	-0.99	13,17,20,21	0
2	NAP	A	401	48/48	0.06	-1.11	11,17,20,21	0

## 6.5 Other polymers ⓘ

There are no such residues in this entry.