



Full wwPDB X-ray Structure Validation Report

Feb 26, 2014 – 07:07 PM GMT

PDB ID : 1FE1
Title : CRYSTAL STRUCTURE PHOTOSYSTEM II
Authors : Zouni, A.; Witt, H.-T.; Kern, J.; Fromme, P.; Krauss, N.; Saenger, W.; Orth, P.
Deposited on : 2000-07-20
Resolution : 3.80 Å(reported)

This is a full wwPDB validation report for a publicly released PDB entry.
We welcome your comments at validation@mail.wwpdb.org
A user guide is available at <http://wwpdb.org/ValidationPDFNotes.html>

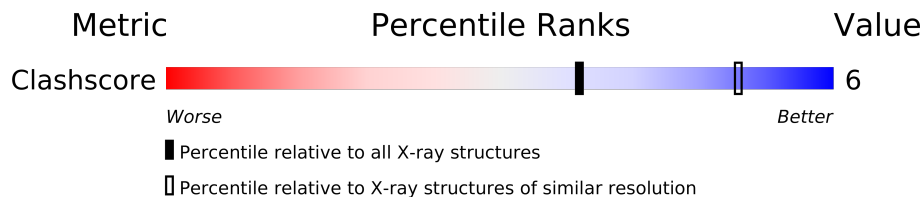
The following versions of software and data (see [references](#)) were used in the production of this report:

MolProbity : 4.02b-467
Mogul : 1.15 2013
Xtriage (Phenix) : **NOT EXECUTED**
EDS : **NOT EXECUTED**
Percentile statistics : 21963
Ideal geometry (proteins) : Engh & Huber (2001)
Ideal geometry (DNA, RNA) : Parkinson et. al. (1996)
Validation Pipeline (wwPDB-VP) : stable22683

1 Overall quality at a glance

The reported resolution of this entry is 3.80 Å.










Percentile scores (ranging between 0-100) for global validation metrics of the entry are shown in the following graphic. The table shows the number of entries on which the scores are based.



Metric	Whole archive (#Entries)	Similar resolution (#Entries, resolution range(Å))
Clashscore	79885	1100 (4.10-3.50)

The table below summarises the geometric issues observed across the polymeric chains and their fit to the electron density. The red, orange, yellow and green segments on the lower bar indicate the fraction of residues that contain outliers for ≥ 3 , 2, 1 and 0 types of geometric quality criteria. The upper red bar (where present) indicates the fraction of residues that have poor fit to the electron density.

Note EDS was not executed.

Mol	Chain	Length	Quality of chain
1	A	169	
1	J	169	
2	B	174	
2	K	174	
3	C	156	
3	L	156	
4	D	155	
4	M	155	
5	E	40	
5	N	40	
6	F	30	
6	O	30	
7	G	312	
7	P	312	
8	H	115	
8	Q	115	
9	I	87	
9	R	87	

2 Entry composition

There are 17 unique types of molecules in this entry. The entry contains 4328 atoms, of which 0 are hydrogen and 0 are deuterium.

In the tables below, the ZeroOcc column contains the number of atoms modelled with zero occupancy, the AltConf column contains the number of residues with at least one atom in alternate conformation and the Trace column contains the number of residues modelled with at most 2 atoms.

- Molecule 1 is a protein called PROTEIN (PHOTOSYSTEM II: SUBUNIT PSBA).

Mol	Chain	Residues	Atoms	ZeroOcc	AltConf	Trace
1	A	169	Total C 169 169	0	0	169
1	J	169	Total C 169 169	0	0	169

- Molecule 2 is a protein called PROTEIN (PHOTOSYSTEM II: SUBUNIT PSBD).

Mol	Chain	Residues	Atoms	ZeroOcc	AltConf	Trace
2	B	174	Total C 174 174	0	0	174
2	K	174	Total C 174 174	0	0	174

- Molecule 3 is a protein called PROTEIN (PHOTOSYSTEM II: SUBUNIT PSBC).

Mol	Chain	Residues	Atoms	ZeroOcc	AltConf	Trace
3	C	156	Total C 156 156	0	0	156
3	L	156	Total C 156 156	0	0	156

- Molecule 4 is a protein called PROTEIN (PHOTOSYSTEM II: SUBUNIT PSBB).

Mol	Chain	Residues	Atoms	ZeroOcc	AltConf	Trace
4	D	155	Total C 155 155	0	0	155
4	M	155	Total C 155 155	0	0	155

- Molecule 5 is a protein called PROTEIN (PHOTOSYSTEM II: SUBUNIT PSBE).

Mol	Chain	Residues	Atoms	ZeroOcc	AltConf	Trace
5	E	40	Total C 40 40	0	0	40
5	N	40	Total C 40 40	0	0	40

- Molecule 6 is a protein called PROTEIN (PHOTOSYSTEM II: SUBUNIT PSBF).

Mol	Chain	Residues	Atoms	ZeroOcc	AltConf	Trace
6	F	30	Total C 30 30	0	0	30
6	O	30	Total C 30 30	0	0	30

- Molecule 7 is a protein called PROTEIN (PHOTOSYSTEM II: SUBUNIT UNKNOWN).

Mol	Chain	Residues	Atoms	ZeroOcc	AltConf	Trace
7	G	312	Total C 312 312	0	0	312
7	P	312	Total C 312 312	0	0	312

- Molecule 8 is a protein called PROTEIN (PHOTOSYSTEM II: SUBUNIT PSBO).

Mol	Chain	Residues	Atoms	ZeroOcc	AltConf	Trace
8	H	115	Total C 115 115	0	0	115
8	Q	115	Total C 115 115	0	0	115

- Molecule 9 is a protein called PROTEIN (PHOTOSYSTEM II: SUBUNIT PSBV).

Mol	Chain	Residues	Atoms	ZeroOcc	AltConf	Trace
9	I	87	Total C 87 87	0	0	87
9	R	87	Total C 87 87	0	0	87

- Molecule 10 is MANGANESE (II) ION (three-letter code: MN) (formula: Mn).

Mol	Chain	Residues	Atoms	ZeroOcc	AltConf
10	J	4	Total Mn 4 4	0	0

Continued on next page...

Continued from previous page...

Mol	Chain	Residues	Atoms		ZeroOcc	AltConf
10	A	4	Total	Mn	0	0
			4	4		

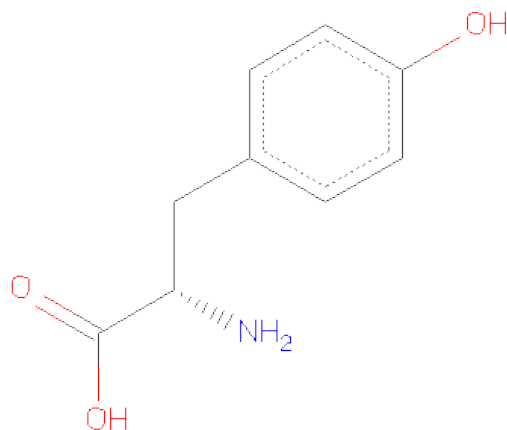
- Molecule 11 is FE (III) ION (three-letter code: FE) (formula: Fe).

Mol	Chain	Residues	Atoms		ZeroOcc	AltConf
11	B	1	Total	Fe	0	0
			1	1		
11	K	1	Total	Fe	0	0
			1	1		

- Molecule 12 is CADMIUM ION (three-letter code: CD) (formula: Cd).

Mol	Chain	Residues	Atoms		ZeroOcc	AltConf
12	H	1	Total	Cd	0	0
			1	1		
12	Q	1	Total	Cd	0	0
			1	1		

- Molecule 13 is TYROSINE (three-letter code: TYR) (formula: C₉H₁₁NO₃).



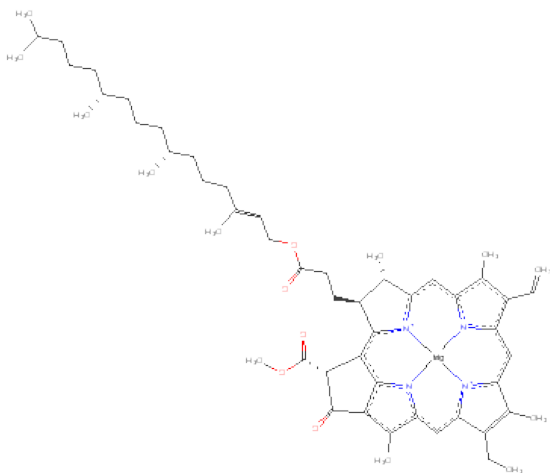
Mol	Chain	Residues	Atoms			ZeroOcc	AltConf
13	A	1	Total	C	O	0	0
			8	7	1		
13	B	1	Total	C	O	0	0
			8	7	1		

Continued on next page...

Continued from previous page...

Mol	Chain	Residues	Atoms			ZeroOcc	AltConf
13	J	1	Total	C	O	0	0
			8	7	1		
13	K	1	Total	C	O	0	0
			8	7	1		

- Molecule 14 is CHLOROPHYLL A (three-letter code: CLA) (formula: C₅₅H₇₂MgN₄O₅).



Mol	Chain	Residues	Atoms				ZeroOcc	AltConf
14	A	1	Total	C	Mg	N	0	0
			25	20	1	4		
14	B	1	Total	C	Mg	N	0	0
			25	20	1	4		
14	A	1	Total	C	Mg	N	0	0
			25	20	1	4		
14	A	1	Total	C	Mg	N	0	0
			25	20	1	4		
14	B	1	Total	C	Mg	N	0	0
			25	20	1	4		
14	C	1	Total	C	Mg	N	0	0
			25	20	1	4		
14	C	1	Total	C	Mg	N	0	0
			25	20	1	4		
14	C	1	Total	C	Mg	N	0	0
			25	20	1	4		

Continued on next page...

Continued from previous page...

Mol	Chain	Residues	Atoms				ZeroOcc	AltConf
14	C	1	Total	C	Mg	N	0	0
			25	20	1	4		
14	C	1	Total	C	Mg	N	0	0
			25	20	1	4		
14	C	1	Total	C	Mg	N	0	0
			25	20	1	4		
14	C	1	Total	C	Mg	N	0	0
			25	20	1	4		
14	C	1	Total	C	Mg	N	0	0
			25	20	1	4		
14	C	1	Total	C	Mg	N	0	0
			25	20	1	4		
14	C	1	Total	C	Mg	N	0	0
			25	20	1	4		
14	G	1	Total	C	Mg	N	0	0
			25	20	1	4		
14	D	1	Total	C	Mg	N	0	0
			25	20	1	4		
14	D	1	Total	C	Mg	N	0	0
			25	20	1	4		
14	D	1	Total	C	Mg	N	0	0
			25	20	1	4		
14	D	1	Total	C	Mg	N	0	0
			25	20	1	4		
14	D	1	Total	C	Mg	N	0	0
			25	20	1	4		
14	D	1	Total	C	Mg	N	0	0
			25	20	1	4		
14	D	1	Total	C	Mg	N	0	0
			25	20	1	4		
14	D	1	Total	C	Mg	N	0	0
			25	20	1	4		
14	D	1	Total	C	Mg	N	0	0
			25	20	1	4		

Continued on next page...

Continued from previous page...

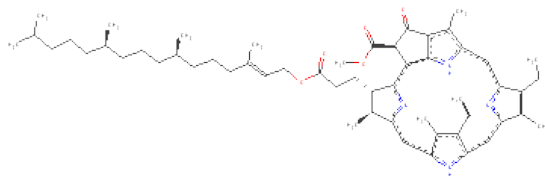
Mol	Chain	Residues	Atoms				ZeroOcc	AltConf
14	D	1	Total 25	C 20	Mg 1	N 4	0	0
14	D	1	Total 25	C 20	Mg 1	N 4	0	0
14	J	1	Total 25	C 20	Mg 1	N 4	0	0
14	K	1	Total 25	C 20	Mg 1	N 4	0	0
14	J	1	Total 25	C 20	Mg 1	N 4	0	0
14	J	1	Total 25	C 20	Mg 1	N 4	0	0
14	J	1	Total 25	C 20	Mg 1	N 4	0	0
14	K	1	Total 25	C 20	Mg 1	N 4	0	0
14	L	1	Total 25	C 20	Mg 1	N 4	0	0
14	L	1	Total 25	C 20	Mg 1	N 4	0	0
14	L	1	Total 25	C 20	Mg 1	N 4	0	0
14	L	1	Total 25	C 20	Mg 1	N 4	0	0
14	L	1	Total 25	C 20	Mg 1	N 4	0	0
14	L	1	Total 25	C 20	Mg 1	N 4	0	0
14	L	1	Total 25	C 20	Mg 1	N 4	0	0
14	L	1	Total 25	C 20	Mg 1	N 4	0	0
14	L	1	Total 25	C 20	Mg 1	N 4	0	0
14	L	1	Total 25	C 20	Mg 1	N 4	0	0
14	L	1	Total 25	C 20	Mg 1	N 4	0	0
14	P	1	Total 25	C 20	Mg 1	N 4	0	0

Continued on next page...

Continued from previous page...

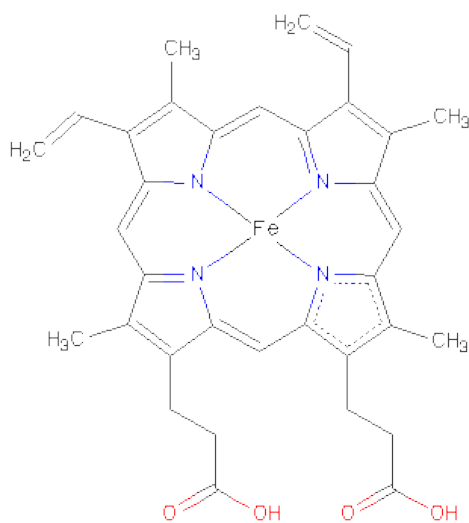
Mol	Chain	Residues	Atoms				ZeroOcc	AltConf
14	M	1	Total	C	Mg	N	0	0
			25	20	1	4		
14	M	1	Total	C	Mg	N	0	0
			25	20	1	4		
14	M	1	Total	C	Mg	N	0	0
			25	20	1	4		
14	M	1	Total	C	Mg	N	0	0
			25	20	1	4		
14	M	1	Total	C	Mg	N	0	0
			25	20	1	4		
14	M	1	Total	C	Mg	N	0	0
			25	20	1	4		
14	M	1	Total	C	Mg	N	0	0
			25	20	1	4		
14	M	1	Total	C	Mg	N	0	0
			25	20	1	4		
14	M	1	Total	C	Mg	N	0	0
			25	20	1	4		
14	M	1	Total	C	Mg	N	0	0
			25	20	1	4		
14	M	1	Total	C	Mg	N	0	0
			25	20	1	4		

- Molecule 15 is PHEOPHYTIN A (three-letter code: PHO) (formula: C₅₅H₇₄N₄O₅).



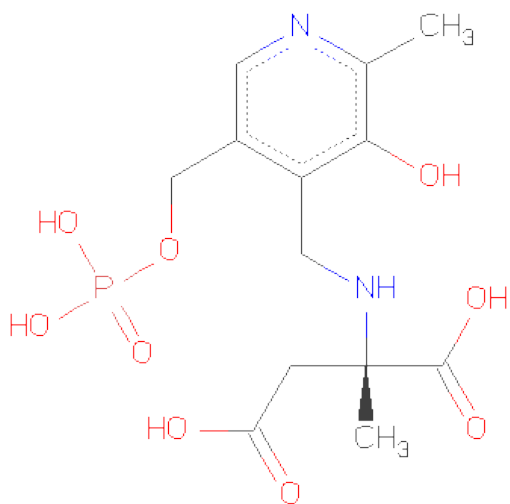
Mol	Chain	Residues	Atoms			ZeroOcc	AltConf
15	B	1	Total	C	N	0	0
			24	20	4		
15	A	1	Total	C	N	0	0
			24	20	4		
15	K	1	Total	C	N	0	0
			24	20	4		
15	J	1	Total	C	N	0	0
			24	20	4		

- Molecule 16 is PROTOPORPHYRIN IX CONTAINING FE (three-letter code: HEM) (formula: $C_{34}H_{32}FeN_4O_4$).



Mol	Chain	Residues	Atoms				ZeroOcc	AltConf
16	F	1	Total	C	Fe	N	0	0
			25	20	1	4		
16	I	1	Total	C	Fe	N	0	0
			25	20	1	4		
16	O	1	Total	C	Fe	N	0	0
			25	20	1	4		
16	R	1	Total	C	Fe	N	0	0
			25	20	1	4		

- Molecule 17 is 2-[(3-HYDROXY-2-METHYL-5-PHOSPHONOOXYMETHYL-PYRIDIN-4-YLMETHYL)-AMINO]-2-METHYL-SUCCINICACID (three-letter code: PLA) (formula: $C_{13}H_{19}N_2O_9P$).



Mol	Chain	Residues	Atoms			ZeroOcc	AltConf
17	B	1	Total	C	N	0	0
			6	5	1		
17	K	1	Total	C	N	0	0
			6	5	1		

3 Residue-property plots

These plots are drawn for all protein, RNA and DNA chains in the entry. The first graphic for a chain summarises the proportions of errors displayed in the second graphic. The second graphic shows the sequence view annotated by issues in geometry and electron density. Residues are color-coded according to the number of geometric quality criteria for which they contain at least one outlier: green = 0, yellow = 1, orange = 2 and red = 3 or more. A red dot above a residue indicates a poor fit to the electron density ($RSRZ > 2$). Stretches of 2 or more consecutive residues without any outlier are shown as a green connector. Residues present in the sample, but not in the model, are shown in grey.

Note EDS was not executed.

- Molecule 1: PROTEIN (PHOTOSYSTEM II: SUBUNIT PSBA)

Chain A: 



- Molecule 1: PROTEIN (PHOTOSYSTEM II: SUBUNIT PSBA)

Chain J: 



- Molecule 2: PROTEIN (PHOTOSYSTEM II: SUBUNIT PSBD)

Chain B: 



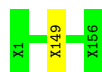
- Molecule 2: PROTEIN (PHOTOSYSTEM II: SUBUNIT PSBD)

Chain K: 



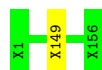
- Molecule 3: PROTEIN (PHOTOSYSTEM II: SUBUNIT PSBC)

Chain C: 



- Molecule 3: PROTEIN (PHOTOSYSTEM II: SUBUNIT PSBC)

Chain L: 



- Molecule 4: PROTEIN (PHOTOSYSTEM II: SUBUNIT PSBB)

Chain D: 

There are no outlier residues recorded for this chain.

- Molecule 4: PROTEIN (PHOTOSYSTEM II: SUBUNIT PSBB)

Chain M: 

There are no outlier residues recorded for this chain.

- Molecule 5: PROTEIN (PHOTOSYSTEM II: SUBUNIT PSBE)

Chain E: 

There are no outlier residues recorded for this chain.

- Molecule 5: PROTEIN (PHOTOSYSTEM II: SUBUNIT PSBE)

Chain N: 

There are no outlier residues recorded for this chain.

- Molecule 6: PROTEIN (PHOTOSYSTEM II: SUBUNIT PSBF)

Chain F: 

There are no outlier residues recorded for this chain.

- Molecule 6: PROTEIN (PHOTOSYSTEM II: SUBUNIT PSBF)

Chain O: 

There are no outlier residues recorded for this chain.

- Molecule 7: PROTEIN (PHOTOSYSTEM II: SUBUNIT UNKNOWN)

Chain G: 

There are no outlier residues recorded for this chain.

- Molecule 7: PROTEIN (PHOTOSYSTEM II: SUBUNIT UNKNOWN)

Chain P: 

There are no outlier residues recorded for this chain.

- Molecule 8: PROTEIN (PHOTOSYSTEM II: SUBUNIT PSBO)

Chain H: 

There are no outlier residues recorded for this chain.

- Molecule 8: PROTEIN (PHOTOSYSTEM II: SUBUNIT PSBO)

Chain Q: 

There are no outlier residues recorded for this chain.

- Molecule 9: PROTEIN (PHOTOSYSTEM II: SUBUNIT PSBV)

Chain I: 

There are no outlier residues recorded for this chain.

- Molecule 9: PROTEIN (PHOTOSYSTEM II: SUBUNIT PSBV)

Chain R: 

There are no outlier residues recorded for this chain.

4 Data and refinement statistics

Xtriage (Phenix) and EDS were not executed - this section will therefore be incomplete.

Property	Value	Source
Space group	P 21 21 21	Depositor
Cell constants a, b, c, α , β , γ	130.01Å 226.72Å 308.29Å 90.00° 90.00° 90.00°	Depositor
Resolution (Å)	20.00 – 3.80	Depositor
% Data completeness (in resolution range)	(Not available) (20.00-3.80)	Depositor
R_{merge}	0.07	Depositor
R_{sym}	(Not available)	Depositor
Refinement program	?	Depositor
R, R_{free}	(Not available) , (Not available)	Depositor
Estimated twinning fraction	No twinning to report.	Xtriage
Total number of atoms	4328	wwPDB-VP
Average B, all atoms (Å ²)	28.0	wwPDB-VP

5 Model quality

5.1 Standard geometry

Bond lengths and bond angles in the following residue types are not validated in this section: PHO, MN, CLA, CD, FE, PLA, HEM

The Z score for a bond length (or angle) is the number of standard deviations the observed value is removed from the expected value. A bond length (or angle) with $|Z| > 5$ is considered an outlier worth inspection. RMSZ is the root-mean-square of all Z scores of the bond lengths (or angles).

Mol	Chain	Bond lengths		Bond angles	
		RMSZ	$\# Z > 5$	RMSZ	$\# Z > 5$

There are no bond length outliers.

There are no bond angle outliers.

There are no chirality outliers.

There are no planarity outliers.

5.2 Close contacts

In the following table, the Non-H and H(model) columns list the number of non-hydrogen atoms and hydrogen atoms in the chain respectively. The H(added) column lists the number of hydrogens added by MolProbity. The Clashes column lists the number of clashes within the asymmetric unit, and the number in parentheses is this value normalized per 1000 atoms of the molecule in the chain. The Symm-Clashes column gives symmetry related clashes, in the same way as for the Clashes column.

Mol	Chain	Non-H	H(model)	H(added)	Clashes	Symm-Clashes
1	A	169	0	0	4	0
1	J	169	0	0	4	0
2	B	174	0	0	4	0
2	K	174	0	0	4	0
3	C	156	0	0	2	0
3	L	156	0	0	2	0
4	D	155	0	0	0	0
4	M	155	0	0	0	0
5	E	40	0	0	0	0
5	N	40	0	0	0	0
6	F	30	0	0	0	0
6	O	30	0	0	0	0
7	G	312	0	0	0	0

Continued on next page...

Continued from previous page...

Mol	Chain	Non-H	H(model)	H(added)	Clashes	Symm-Clashes
7	P	312	0	0	0	0
8	H	115	0	0	0	0
8	Q	115	0	0	0	0
9	I	87	0	0	0	0
9	R	87	0	0	0	0
10	A	4	0	0	0	0
10	J	4	0	0	0	0
11	B	1	0	0	0	0
11	K	1	0	0	0	0
12	H	1	0	0	0	0
12	Q	1	0	0	0	0
13	A	8	0	5	0	0
13	B	8	0	5	0	0
13	J	8	0	5	0	0
13	K	8	0	5	0	0
14	A	100	0	12	0	0
14	B	50	0	6	0	0
14	C	300	0	36	2	0
14	D	325	0	39	6	0
14	G	25	0	3	0	0
14	J	100	0	12	0	0
14	K	50	0	6	0	0
14	L	300	0	36	2	0
14	M	325	0	39	6	0
14	P	25	0	3	0	0
15	A	24	0	5	0	0
15	B	24	0	5	0	0
15	J	24	0	5	0	0
15	K	24	0	5	0	0
16	F	25	0	4	0	0
16	I	25	0	4	0	0
16	O	25	0	4	0	0
16	R	25	0	4	0	0
17	B	6	0	1	0	0
17	K	6	0	1	0	0
All	All	4328	0	250	26	0

Clashscore is defined as the number of clashes calculated for the entry per 1000 atoms (including hydrogens) of the entry. The overall clashscore for this entry is 6.

All (26) close contacts within the same asymmetric unit are listed below.

Atom-1	Atom-2	Distance(Å)	Clash(Å)
1:J:127:UNK:CA	2:K:53:UNK:CA	1.88	1.51
1:A:127:UNK:CA	2:B:53:UNK:CA	1.88	1.49
1:A:60:UNK:CA	2:B:131:UNK:CA	1.95	1.45
1:J:60:UNK:CA	2:K:131:UNK:CA	1.95	1.44
3:L:149:UNK:CA	14:L:166:CLA:C2A	2.23	1.17
3:C:149:UNK:CA	14:C:166:CLA:C2A	2.23	1.15
14:D:159:CLA:HHB	14:D:162:CLA:CHD	1.81	1.10
14:M:159:CLA:HHB	14:M:162:CLA:CHD	1.81	1.08
14:M:159:CLA:HHB	14:M:162:CLA:HHD	1.01	1.01
14:M:159:CLA:CHB	14:M:162:CLA:HHD	1.92	1.00
14:D:159:CLA:CHB	14:D:162:CLA:HHD	1.92	0.98
14:D:159:CLA:HHB	14:D:162:CLA:HHD	1.02	0.97
1:J:126:UNK:CA	2:K:54:UNK:CA	2.66	0.74
1:A:126:UNK:CA	2:B:54:UNK:CA	2.66	0.73
3:L:149:UNK:CA	14:L:166:CLA:C3A	2.69	0.70
3:C:149:UNK:CA	14:C:166:CLA:C3A	2.69	0.70
1:A:69:UNK:CA	1:A:70:UNK:CA	2.76	0.64
1:J:69:UNK:CA	1:J:70:UNK:CA	2.76	0.63
14:M:159:CLA:HHB	14:M:162:CLA:C1D	2.35	0.56
14:D:159:CLA:HHB	14:D:162:CLA:C1D	2.35	0.53
14:D:159:CLA:HHB	14:D:162:CLA:C2D	2.42	0.50
14:M:159:CLA:HHB	14:M:162:CLA:C2D	2.42	0.49
2:B:143:UNK:CA	2:B:144:UNK:CA	2.91	0.48
2:K:143:UNK:CA	2:K:144:UNK:CA	2.91	0.48
14:D:159:CLA:CHB	14:D:162:CLA:C2D	2.97	0.43
14:M:159:CLA:CHB	14:M:162:CLA:C2D	2.97	0.43

There are no symmetry-related clashes.

5.3 Torsion angles

5.3.1 Protein backbone ⓘ

There are no protein backbone outliers to report in this entry.

5.3.2 Protein sidechains ⓘ

There are no protein residues with a non-rotameric sidechain to report in this entry.

5.3.3 RNA ⓘ

There are no RNA chains in this entry.

5.4 Non-standard residues in protein, DNA, RNA chains ⓘ

There are no non-standard protein/DNA/RNA residues in this entry.

5.5 Carbohydrates ⓘ

There are no carbohydrates in this entry.

5.6 Ligand geometry ⓘ

Of 90 ligands modelled in this entry, 12 are monoatomic - leaving 78 for Mogul analysis.

In the following table, the Counts columns list the number of bonds (or angles) for which Mogul statistics could be retrieved, the number of bonds (or angles) that are observed in the model and the number of bonds (or angles) that are defined in the chemical component dictionary. The Link column lists molecule types, if any, to which the group is linked. The Z score for a bond length (or angle) is the number of standard deviations the observed value is removed from the expected value. A bond length (or angle) with $|Z| > 2$ is considered an outlier worth inspection. RMSZ is the root-mean-square of all Z scores of the bond lengths (or angles).

Mol	Type	Chain	Res	Link	Bond lengths			Bond angles		
					Counts	RMSZ	# $ Z > 2$	Counts	RMSZ	# $ Z > 2$
13	TYR	A	174	1	8,8,13	1.10	1 (12%)	10,10,17	1.33	2 (20%)
14	CLA	A	175	-	23,32,73	7.68	5 (21%)	12,54,113	1.71	2 (16%)
14	CLA	A	176	-	23,32,73	7.60	5 (21%)	12,54,113	1.70	2 (16%)
14	CLA	A	177	-	23,32,73	7.52	5 (21%)	12,54,113	1.70	2 (16%)
15	PHO	A	178	-	22,28,69	31.63	13 (59%)	8,40,99	1.44	1 (12%)
14	CLA	A	179	-	23,32,73	7.58	5 (21%)	12,54,113	1.70	2 (16%)
13	TYR	B	176	2	8,8,13	1.10	1 (12%)	10,10,17	1.33	2 (20%)
14	CLA	B	177	-	23,32,73	7.56	5 (21%)	12,54,113	1.69	2 (16%)
15	PHO	B	178	-	22,28,69	31.79	13 (59%)	8,40,99	1.42	1 (12%)
14	CLA	B	179	-	23,32,73	7.59	5 (21%)	12,54,113	1.71	2 (16%)
17	PLA	B	180	-	5,6,25	15.03	3 (60%)	1,6,37	0.65	0
14	CLA	C	157	-	23,32,73	7.45	5 (21%)	12,54,113	1.72	2 (16%)
14	CLA	C	158	-	23,32,73	7.59	5 (21%)	12,54,113	1.70	2 (16%)
14	CLA	C	159	-	23,32,73	7.64	5 (21%)	12,54,113	1.68	2 (16%)
14	CLA	C	160	-	23,32,73	7.56	5 (21%)	12,54,113	1.70	2 (16%)
14	CLA	C	161	-	23,32,73	7.51	5 (21%)	12,54,113	1.70	2 (16%)
14	CLA	C	162	-	23,32,73	7.56	5 (21%)	12,54,113	1.69	2 (16%)
14	CLA	C	163	-	23,32,73	7.61	5 (21%)	12,54,113	1.71	2 (16%)

Mol	Type	Chain	Res	Link	Bond lengths			Bond angles		
					Counts	RMSZ	# Z > 2	Counts	RMSZ	# Z > 2
14	CLA	C	164	-	23,32,73	7.61	5 (21%)	12,54,113	1.68	2 (16%)
14	CLA	C	165	-	23,32,73	7.62	5 (21%)	12,54,113	1.71	2 (16%)
14	CLA	C	166	-	23,32,73	7.38	5 (21%)	12,54,113	1.70	2 (16%)
14	CLA	C	167	-	23,32,73	7.58	5 (21%)	12,54,113	1.70	2 (16%)
14	CLA	C	168	-	23,32,73	7.52	5 (21%)	12,54,113	1.70	2 (16%)
14	CLA	D	156	-	23,32,73	7.52	5 (21%)	12,54,113	1.69	2 (16%)
14	CLA	D	157	-	23,32,73	7.57	5 (21%)	12,54,113	1.71	2 (16%)
14	CLA	D	158	-	23,32,73	7.63	5 (21%)	12,54,113	1.72	2 (16%)
14	CLA	D	159	-	23,32,73	7.52	5 (21%)	12,54,113	1.69	2 (16%)
14	CLA	D	160	-	23,32,73	7.61	5 (21%)	12,54,113	1.68	2 (16%)
14	CLA	D	161	-	23,32,73	7.56	5 (21%)	12,54,113	1.70	2 (16%)
14	CLA	D	162	-	23,32,73	7.58	5 (21%)	12,54,113	1.69	2 (16%)
14	CLA	D	163	-	23,32,73	7.54	5 (21%)	12,54,113	1.68	2 (16%)
14	CLA	D	164	-	23,32,73	7.47	5 (21%)	12,54,113	1.70	2 (16%)
14	CLA	D	165	-	23,32,73	7.68	5 (21%)	12,54,113	1.68	2 (16%)
14	CLA	D	166	-	23,32,73	7.63	5 (21%)	12,54,113	1.69	2 (16%)
14	CLA	D	167	-	23,32,73	7.55	5 (21%)	12,54,113	1.69	2 (16%)
14	CLA	D	168	-	23,32,73	7.60	5 (21%)	12,54,113	1.70	2 (16%)
16	HEM	F	31	-	22,32,50	30.36	6 (27%)	16,54,82	1.51	3 (18%)
14	CLA	G	313	-	23,32,73	7.51	5 (21%)	12,54,113	1.70	2 (16%)
16	HEM	I	88	-	22,32,50	30.41	6 (27%)	16,54,82	1.53	3 (18%)
13	TYR	J	174	1	8,8,13	1.10	1 (12%)	10,10,17	1.32	2 (20%)
14	CLA	J	175	-	23,32,73	7.64	5 (21%)	12,54,113	1.71	2 (16%)
14	CLA	J	176	-	23,32,73	7.60	5 (21%)	12,54,113	1.70	2 (16%)
14	CLA	J	177	-	23,32,73	7.50	5 (21%)	12,54,113	1.70	2 (16%)
15	PHO	J	178	-	22,28,69	31.65	13 (59%)	8,40,99	1.44	1 (12%)
14	CLA	J	179	-	23,32,73	7.64	5 (21%)	12,54,113	1.69	2 (16%)
13	TYR	K	176	2	8,8,13	1.10	1 (12%)	10,10,17	1.33	2 (20%)
14	CLA	K	177	-	23,32,73	7.58	5 (21%)	12,54,113	1.69	2 (16%)
15	PHO	K	178	-	22,28,69	31.64	13 (59%)	8,40,99	1.41	1 (12%)
14	CLA	K	179	-	23,32,73	7.67	5 (21%)	12,54,113	1.70	2 (16%)
17	PLA	K	180	-	5,6,25	15.03	3 (60%)	1,6,37	0.65	0
14	CLA	L	157	-	23,32,73	7.48	5 (21%)	12,54,113	1.73	2 (16%)
14	CLA	L	158	-	23,32,73	7.57	5 (21%)	12,54,113	1.71	2 (16%)
14	CLA	L	159	-	23,32,73	7.65	5 (21%)	12,54,113	1.68	2 (16%)

Mol	Type	Chain	Res	Link	Bond lengths			Bond angles		
					Counts	RMSZ	# Z > 2	Counts	RMSZ	# Z > 2
14	CLA	L	160	-	23,32,73	7.52	5 (21%)	12,54,113	1.71	2 (16%)
14	CLA	L	161	-	23,32,73	7.46	5 (21%)	12,54,113	1.70	2 (16%)
14	CLA	L	162	-	23,32,73	7.46	5 (21%)	12,54,113	1.69	2 (16%)
14	CLA	L	163	-	23,32,73	7.66	5 (21%)	12,54,113	1.70	2 (16%)
14	CLA	L	164	-	23,32,73	7.61	5 (21%)	12,54,113	1.69	2 (16%)
14	CLA	L	165	-	23,32,73	7.69	5 (21%)	12,54,113	1.70	2 (16%)
14	CLA	L	166	-	23,32,73	7.40	5 (21%)	12,54,113	1.71	2 (16%)
14	CLA	L	167	-	23,32,73	7.54	5 (21%)	12,54,113	1.70	2 (16%)
14	CLA	L	168	-	23,32,73	7.46	5 (21%)	12,54,113	1.70	2 (16%)
14	CLA	M	156	-	23,32,73	7.53	5 (21%)	12,54,113	1.69	2 (16%)
14	CLA	M	157	-	23,32,73	7.52	5 (21%)	12,54,113	1.71	2 (16%)
14	CLA	M	158	-	23,32,73	7.58	5 (21%)	12,54,113	1.72	2 (16%)
14	CLA	M	159	-	23,32,73	7.57	5 (21%)	12,54,113	1.69	2 (16%)
14	CLA	M	160	-	23,32,73	7.60	5 (21%)	12,54,113	1.69	2 (16%)
14	CLA	M	161	-	23,32,73	7.62	5 (21%)	12,54,113	1.71	2 (16%)
14	CLA	M	162	-	23,32,73	7.60	5 (21%)	12,54,113	1.69	2 (16%)
14	CLA	M	163	-	23,32,73	7.56	5 (21%)	12,54,113	1.68	2 (16%)
14	CLA	M	164	-	23,32,73	7.48	5 (21%)	12,54,113	1.69	2 (16%)
14	CLA	M	165	-	23,32,73	7.74	5 (21%)	12,54,113	1.68	2 (16%)
14	CLA	M	166	-	23,32,73	7.62	5 (21%)	12,54,113	1.68	2 (16%)
14	CLA	M	167	-	23,32,73	7.49	5 (21%)	12,54,113	1.69	2 (16%)
14	CLA	M	168	-	23,32,73	7.57	5 (21%)	12,54,113	1.70	2 (16%)
16	HEM	O	58	-	22,32,50	30.45	6 (27%)	16,54,82	1.51	3 (18%)
14	CLA	P	313	-	23,32,73	7.49	5 (21%)	12,54,113	1.70	2 (16%)
16	HEM	R	88	-	22,32,50	30.45	6 (27%)	16,54,82	1.53	3 (18%)

In the following table, the Chirals column lists the number of chiral outliers, the number of chiral centers analysed, the number of these observed in the model and the number defined in the chemical component dictionary. Similar counts are reported in the Torsion and Rings columns. '-' means no outliers of that kind were identified.

Mol	Type	Chain	Res	Link	Chirals	Torsions	Rings
13	TYR	A	174	1	-	0/0/0/8	0/1/1/1
14	CLA	A	175	-	-	0/0/66/135	0/0/8/9
14	CLA	A	176	-	-	0/0/66/135	0/0/8/9
14	CLA	A	177	-	-	0/0/66/135	0/0/8/9
15	PHO	A	178	-	-	0/5/34/103	0/0/5/6

Continued on next page...

Continued from previous page...

Mol	Type	Chain	Res	Link	Chirals	Torsions	Rings
14	CLA	A	179	-	-	0/0/66/135	0/0/8/9
13	TYR	B	176	2	-	0/0/0/8	0/1/1/1
14	CLA	B	177	-	-	0/0/66/135	0/0/8/9
15	PHO	B	178	-	-	0/5/34/103	0/0/5/6
14	CLA	B	179	-	-	0/0/66/135	0/0/8/9
17	PLA	B	180	-	-	0/0/0/23	0/1/1/1
14	CLA	C	157	-	-	0/0/66/135	0/0/8/9
14	CLA	C	158	-	-	0/0/66/135	0/0/8/9
14	CLA	C	159	-	-	0/0/66/135	0/0/8/9
14	CLA	C	160	-	-	0/0/66/135	0/0/8/9
14	CLA	C	161	-	-	0/0/66/135	0/0/8/9
14	CLA	C	162	-	-	0/0/66/135	0/0/8/9
14	CLA	C	163	-	-	0/0/66/135	0/0/8/9
14	CLA	C	164	-	-	0/0/66/135	0/0/8/9
14	CLA	C	165	-	-	0/0/66/135	0/0/8/9
14	CLA	C	166	-	-	0/0/66/135	0/0/8/9
14	CLA	C	167	-	-	0/0/66/135	0/0/8/9
14	CLA	C	168	-	-	0/0/66/135	0/0/8/9
14	CLA	D	156	-	-	0/0/66/135	0/0/8/9
14	CLA	D	157	-	-	0/0/66/135	0/0/8/9
14	CLA	D	158	-	-	0/0/66/135	0/0/8/9
14	CLA	D	159	-	-	0/0/66/135	0/0/8/9
14	CLA	D	160	-	-	0/0/66/135	0/0/8/9
14	CLA	D	161	-	-	0/0/66/135	0/0/8/9
14	CLA	D	162	-	-	0/0/66/135	0/0/8/9
14	CLA	D	163	-	-	0/0/66/135	0/0/8/9
14	CLA	D	164	-	-	0/0/66/135	0/0/8/9
14	CLA	D	165	-	-	0/0/66/135	0/0/8/9
14	CLA	D	166	-	-	0/0/66/135	0/0/8/9
14	CLA	D	167	-	-	0/0/66/135	0/0/8/9
14	CLA	D	168	-	-	0/0/66/135	0/0/8/9
16	HEM	F	31	-	-	0/0/79/114	0/0/8/8
14	CLA	G	313	-	-	0/0/66/135	0/0/8/9
16	HEM	I	88	-	-	0/0/79/114	0/0/8/8
13	TYR	J	174	1	-	0/0/0/8	0/1/1/1
14	CLA	J	175	-	-	0/0/66/135	0/0/8/9
14	CLA	J	176	-	-	0/0/66/135	0/0/8/9
14	CLA	J	177	-	-	0/0/66/135	0/0/8/9
15	PHO	J	178	-	-	0/5/34/103	0/0/5/6
14	CLA	J	179	-	-	0/0/66/135	0/0/8/9
13	TYR	K	176	2	-	0/0/0/8	0/1/1/1
14	CLA	K	177	-	-	0/0/66/135	0/0/8/9

Continued on next page...

Continued from previous page...

Mol	Type	Chain	Res	Link	Chirals	Torsions	Rings
15	PHO	K	178	-	-	0/5/34/103	0/0/5/6
14	CLA	K	179	-	-	0/0/66/135	0/0/8/9
17	PLA	K	180	-	-	0/0/0/23	0/1/1/1
14	CLA	L	157	-	-	0/0/66/135	0/0/8/9
14	CLA	L	158	-	-	0/0/66/135	0/0/8/9
14	CLA	L	159	-	-	0/0/66/135	0/0/8/9
14	CLA	L	160	-	-	0/0/66/135	0/0/8/9
14	CLA	L	161	-	-	0/0/66/135	0/0/8/9
14	CLA	L	162	-	-	0/0/66/135	0/0/8/9
14	CLA	L	163	-	-	0/0/66/135	0/0/8/9
14	CLA	L	164	-	-	0/0/66/135	0/0/8/9
14	CLA	L	165	-	-	0/0/66/135	0/0/8/9
14	CLA	L	166	-	-	0/0/66/135	0/0/8/9
14	CLA	L	167	-	-	0/0/66/135	0/0/8/9
14	CLA	L	168	-	-	0/0/66/135	0/0/8/9
14	CLA	M	156	-	-	0/0/66/135	0/0/8/9
14	CLA	M	157	-	-	0/0/66/135	0/0/8/9
14	CLA	M	158	-	-	0/0/66/135	0/0/8/9
14	CLA	M	159	-	-	0/0/66/135	0/0/8/9
14	CLA	M	160	-	-	0/0/66/135	0/0/8/9
14	CLA	M	161	-	-	0/0/66/135	0/0/8/9
14	CLA	M	162	-	-	0/0/66/135	0/0/8/9
14	CLA	M	163	-	-	0/0/66/135	0/0/8/9
14	CLA	M	164	-	-	0/0/66/135	0/0/8/9
14	CLA	M	165	-	-	0/0/66/135	0/0/8/9
14	CLA	M	166	-	-	0/0/66/135	0/0/8/9
14	CLA	M	167	-	-	0/0/66/135	0/0/8/9
14	CLA	M	168	-	-	0/0/66/135	0/0/8/9
16	HEM	O	58	-	-	0/0/79/114	0/0/8/8
14	CLA	P	313	-	-	0/0/66/135	0/0/8/9
16	HEM	R	88	-	-	0/0/79/114	0/0/8/8

All (406) bond length outliers are listed below:

Mol	Chain	Res	Type	Atoms	Z	Observed(Å)	Ideal(Å)
15	A	178	PHO	C3C-C4C	106.85	1.53	1.38
15	J	178	PHO	C3C-C4C	106.83	1.53	1.38
15	B	178	PHO	C3C-C4C	106.68	1.53	1.38
15	K	178	PHO	C3C-C4C	106.13	1.53	1.38
16	R	88	HEM	C2A-C1A	104.45	1.52	1.38
16	I	88	HEM	C2A-C1A	104.23	1.52	1.38
16	O	58	HEM	C2A-C1A	104.11	1.52	1.38

Continued on next page...

Continued from previous page...

Mol	Chain	Res	Type	Atoms	Z	Observed(Å)	Ideal(Å)
16	F	31	HEM	C2A-C1A	104.01	1.52	1.38
15	B	178	PHO	C2C-C1C	100.91	1.52	1.38
15	K	178	PHO	C2C-C1C	100.42	1.52	1.38
15	J	178	PHO	C2C-C1C	99.71	1.52	1.38
15	A	178	PHO	C2C-C1C	99.60	1.52	1.38
16	O	58	HEM	C3A-C4A	97.57	1.52	1.38
16	R	88	HEM	C3A-C4A	97.17	1.51	1.38
16	I	88	HEM	C3A-C4A	97.14	1.51	1.38
16	F	31	HEM	C3A-C4A	97.00	1.51	1.38
17	K	180	PLA	C2-C3	32.47	1.43	1.40
17	B	180	PLA	C2-C3	32.47	1.43	1.40
14	K	179	CLA	C2A-C1A	26.99	1.52	1.39
14	C	161	CLA	C2A-C1A	26.97	1.52	1.39
14	M	165	CLA	C2A-C1A	26.97	1.52	1.39
14	J	179	CLA	C2A-C1A	26.94	1.52	1.39
14	B	179	CLA	C2A-C1A	26.92	1.52	1.39
14	M	157	CLA	C2A-C1A	26.91	1.52	1.39
14	D	168	CLA	C2A-C1A	26.91	1.52	1.39
14	G	313	CLA	C2A-C1A	26.90	1.52	1.39
14	M	168	CLA	C2A-C1A	26.89	1.52	1.39
14	D	160	CLA	C2A-C1A	26.89	1.52	1.39
14	M	161	CLA	C2A-C1A	26.88	1.52	1.39
14	M	160	CLA	C2A-C1A	26.88	1.52	1.39
14	D	157	CLA	C2A-C1A	26.88	1.52	1.39
14	L	164	CLA	C2A-C1A	26.87	1.52	1.39
14	D	165	CLA	C2A-C1A	26.87	1.52	1.39
14	C	160	CLA	C2A-C1A	26.86	1.52	1.39
14	C	164	CLA	C2A-C1A	26.86	1.52	1.39
14	L	161	CLA	C2A-C1A	26.86	1.52	1.39
14	L	160	CLA	C2A-C1A	26.85	1.52	1.39
14	L	163	CLA	C2A-C1A	26.85	1.52	1.39
14	A	179	CLA	C2A-C1A	26.83	1.52	1.39
14	L	168	CLA	C2A-C1A	26.83	1.52	1.39
14	M	159	CLA	C2A-C1A	26.83	1.52	1.39
14	A	175	CLA	C2A-C1A	26.82	1.52	1.39
14	A	177	CLA	C2A-C1A	26.81	1.52	1.39
14	P	313	CLA	C2A-C1A	26.80	1.52	1.39
14	C	163	CLA	C2A-C1A	26.80	1.52	1.39
14	D	161	CLA	C2A-C1A	26.78	1.52	1.39
14	D	158	CLA	C2A-C1A	26.78	1.52	1.39
14	C	168	CLA	C2A-C1A	26.76	1.52	1.39
14	J	175	CLA	C2A-C1A	26.76	1.52	1.39

Continued on next page...

Continued from previous page...

Mol	Chain	Res	Type	Atoms	Z	Observed(Å)	Ideal(Å)
14	J	177	CLA	C2A-C1A	26.76	1.52	1.39
14	C	162	CLA	C2A-C1A	26.76	1.52	1.39
14	L	165	CLA	C2A-C1A	26.75	1.52	1.39
14	D	163	CLA	C2A-C1A	26.75	1.52	1.39
14	D	164	CLA	C2A-C1A	26.73	1.52	1.39
14	M	164	CLA	C2A-C1A	26.73	1.52	1.39
14	D	159	CLA	C2A-C1A	26.73	1.52	1.39
14	M	163	CLA	C2A-C1A	26.70	1.52	1.39
14	C	165	CLA	C2A-C1A	26.69	1.52	1.39
14	D	167	CLA	C2A-C1A	26.69	1.52	1.39
14	C	159	CLA	C2A-C1A	26.68	1.52	1.39
14	L	162	CLA	C2A-C1A	26.67	1.52	1.39
14	D	166	CLA	C2A-C1A	26.67	1.52	1.39
14	M	166	CLA	C2A-C1A	26.66	1.52	1.39
14	K	177	CLA	C2A-C1A	26.66	1.52	1.39
14	L	157	CLA	C2A-C1A	26.65	1.52	1.39
14	B	177	CLA	C2A-C1A	26.65	1.52	1.39
14	M	162	CLA	C2A-C1A	26.65	1.52	1.39
14	A	176	CLA	C2A-C1A	26.63	1.52	1.39
14	D	162	CLA	C2A-C1A	26.63	1.52	1.39
14	C	157	CLA	C2A-C1A	26.62	1.52	1.39
14	M	158	CLA	C2A-C1A	26.62	1.52	1.39
14	L	158	CLA	C2A-C1A	26.62	1.52	1.39
14	C	166	CLA	C2A-C1A	26.61	1.52	1.39
14	J	176	CLA	C2A-C1A	26.60	1.52	1.39
14	C	158	CLA	C2A-C1A	26.60	1.52	1.39
14	D	156	CLA	C2A-C1A	26.54	1.52	1.39
14	M	167	CLA	C2A-C1A	26.54	1.52	1.39
14	C	167	CLA	C2A-C1A	26.53	1.52	1.39
14	M	156	CLA	C2A-C1A	26.52	1.52	1.39
14	L	166	CLA	C2A-C1A	26.51	1.52	1.39
14	L	167	CLA	C2A-C1A	26.50	1.52	1.39
14	L	159	CLA	C2A-C1A	26.47	1.52	1.39
14	L	159	CLA	C3B-C4B	20.28	1.41	1.38
14	C	159	CLA	C3B-C4B	19.96	1.41	1.38
15	K	178	PHO	C3B-C4B	19.83	1.41	1.38
14	L	165	CLA	C3B-C4B	19.65	1.41	1.38
14	M	165	CLA	C3B-C4B	19.51	1.41	1.38
15	B	178	PHO	C3B-C4B	19.40	1.41	1.38
14	C	165	CLA	C3B-C4B	19.38	1.41	1.38
14	D	165	CLA	C3B-C4B	19.24	1.41	1.38
14	B	177	CLA	C3B-C4B	19.18	1.41	1.38

Continued on next page...

Continued from previous page...

Mol	Chain	Res	Type	Atoms	Z	Observed(Å)	Ideal(Å)
14	D	162	CLA	C3B-C4B	19.17	1.41	1.38
14	C	162	CLA	C3B-C4B	19.06	1.41	1.38
14	J	176	CLA	C3B-C4B	19.05	1.41	1.38
14	K	177	CLA	C3B-C4B	19.05	1.41	1.38
14	M	162	CLA	C3B-C4B	19.05	1.41	1.38
14	D	156	CLA	C3B-C4B	19.04	1.41	1.38
14	D	167	CLA	C3B-C4B	19.04	1.41	1.38
14	M	156	CLA	C3B-C4B	19.03	1.41	1.38
14	J	175	CLA	C3B-C4B	19.02	1.41	1.38
14	J	179	CLA	C3B-C4B	18.99	1.41	1.38
14	A	175	CLA	C3B-C4B	18.96	1.41	1.38
14	A	176	CLA	C3B-C4B	18.94	1.41	1.38
14	D	166	CLA	C3B-C4B	18.90	1.41	1.38
14	M	166	CLA	C3B-C4B	18.87	1.41	1.38
14	C	164	CLA	C3B-C4B	18.84	1.41	1.38
14	C	167	CLA	C3B-C4B	18.83	1.41	1.38
14	L	158	CLA	C3B-C4B	18.73	1.41	1.38
14	D	168	CLA	C3B-C4B	18.68	1.41	1.38
14	P	313	CLA	C3B-C4B	18.66	1.41	1.38
14	M	159	CLA	C3B-C4B	18.65	1.41	1.38
14	C	160	CLA	C3B-C4B	18.64	1.41	1.38
14	C	158	CLA	C3B-C4B	18.63	1.41	1.38
14	D	164	CLA	C3B-C4B	18.59	1.41	1.38
14	M	158	CLA	C3B-C4B	18.58	1.41	1.38
14	K	179	CLA	C3B-C4B	18.58	1.41	1.38
14	A	179	CLA	C3B-C4B	18.58	1.41	1.38
14	L	164	CLA	C3B-C4B	18.57	1.41	1.38
14	M	167	CLA	C3B-C4B	18.57	1.41	1.38
14	D	158	CLA	C3B-C4B	18.56	1.41	1.38
14	L	162	CLA	C3B-C4B	18.53	1.41	1.38
14	M	164	CLA	C3B-C4B	18.53	1.41	1.38
14	L	163	CLA	C3B-C4B	18.48	1.41	1.38
14	M	161	CLA	C3B-C4B	18.44	1.41	1.38
14	A	177	CLA	C3B-C4B	18.43	1.41	1.38
14	D	159	CLA	C3B-C4B	18.43	1.41	1.38
14	G	313	CLA	C3B-C4B	18.42	1.41	1.38
14	M	168	CLA	C3B-C4B	18.39	1.41	1.38
14	C	163	CLA	C3B-C4B	18.39	1.41	1.38
14	L	167	CLA	C3B-C4B	18.37	1.41	1.38
14	C	168	CLA	C3B-C4B	18.36	1.41	1.38
14	D	161	CLA	C3B-C4B	18.35	1.41	1.38
14	D	157	CLA	C3B-C4B	18.34	1.41	1.38

Continued on next page...

Continued from previous page...

Mol	Chain	Res	Type	Atoms	Z	Observed(Å)	Ideal(Å)
14	D	160	CLA	C3B-C4B	18.33	1.41	1.38
14	D	163	CLA	C3B-C4B	18.31	1.41	1.38
14	C	161	CLA	C3B-C4B	18.31	1.41	1.38
14	M	157	CLA	C3B-C4B	18.30	1.41	1.38
14	B	179	CLA	C3B-C4B	18.27	1.41	1.38
14	J	177	CLA	C3B-C4B	18.26	1.41	1.38
14	L	160	CLA	C3B-C4B	18.25	1.41	1.38
14	M	160	CLA	C3B-C4B	18.24	1.41	1.38
14	M	163	CLA	C3B-C4B	18.21	1.41	1.38
15	J	178	PHO	C3B-C4B	18.11	1.41	1.38
14	L	166	CLA	C3B-C4B	18.09	1.41	1.38
14	C	157	CLA	C3B-C4B	18.04	1.41	1.38
14	L	157	CLA	C3B-C4B	18.04	1.41	1.38
15	A	178	PHO	C3B-C4B	18.00	1.41	1.38
14	L	161	CLA	C3B-C4B	17.98	1.41	1.38
14	L	168	CLA	C3B-C4B	17.84	1.41	1.38
14	C	166	CLA	C3B-C4B	17.74	1.41	1.38
14	K	179	CLA	C3D-C4D	14.99	1.40	1.38
14	B	179	CLA	C3D-C4D	14.67	1.40	1.38
14	D	158	CLA	C3D-C4D	14.62	1.40	1.38
15	A	178	PHO	C3D-C4D	14.59	1.40	1.38
14	M	163	CLA	C3D-C4D	14.49	1.40	1.38
14	L	163	CLA	C3D-C4D	14.48	1.40	1.38
14	A	175	CLA	C3D-C4D	14.44	1.40	1.38
14	C	167	CLA	C3D-C4D	14.41	1.40	1.38
15	J	178	PHO	C3D-C4D	14.36	1.40	1.38
14	L	164	CLA	C3D-C4D	14.31	1.40	1.38
14	L	167	CLA	C3D-C4D	14.31	1.40	1.38
14	M	162	CLA	C3D-C4D	14.29	1.40	1.38
14	C	163	CLA	C3D-C4D	14.26	1.40	1.38
14	M	160	CLA	C3D-C4D	14.24	1.40	1.38
14	M	158	CLA	C3D-C4D	14.23	1.40	1.38
14	A	179	CLA	C3D-C4D	14.21	1.40	1.38
14	M	165	CLA	C3D-C4D	14.19	1.40	1.38
14	J	179	CLA	C3D-C4D	14.17	1.40	1.38
14	D	157	CLA	C3D-C4D	14.13	1.40	1.38
14	D	166	CLA	C3D-C4D	14.12	1.40	1.38
14	D	160	CLA	C3D-C4D	14.12	1.40	1.38
14	C	158	CLA	C3D-C4D	14.03	1.40	1.38
14	D	163	CLA	C3D-C4D	14.02	1.40	1.38
14	D	165	CLA	C3D-C4D	14.01	1.40	1.38
14	M	159	CLA	C3D-C4D	14.01	1.40	1.38

Continued on next page...

Continued from previous page...

Mol	Chain	Res	Type	Atoms	Z	Observed(Å)	Ideal(Å)
14	J	175	CLA	C3D-C4D	13.95	1.40	1.38
14	D	159	CLA	C3D-C4D	13.86	1.40	1.38
14	L	158	CLA	C3D-C4D	13.86	1.40	1.38
14	M	166	CLA	C3D-C4D	13.83	1.40	1.38
14	C	164	CLA	C3D-C4D	13.81	1.40	1.38
14	L	160	CLA	C3D-C4D	13.80	1.40	1.38
14	M	161	CLA	C3D-C4D	13.79	1.40	1.38
14	D	161	CLA	C3D-C4D	13.78	1.40	1.38
14	J	176	CLA	C3D-C4D	13.78	1.40	1.38
14	K	177	CLA	C3D-C4D	13.77	1.40	1.38
14	C	168	CLA	C3D-C4D	13.74	1.40	1.38
14	D	162	CLA	C3D-C4D	13.74	1.40	1.38
14	A	176	CLA	C3D-C4D	13.74	1.40	1.38
14	C	160	CLA	C3D-C4D	13.71	1.40	1.38
14	M	157	CLA	C3D-C4D	13.69	1.40	1.38
14	J	177	CLA	C3D-C4D	13.66	1.40	1.38
14	A	177	CLA	C3D-C4D	13.64	1.40	1.38
14	D	168	CLA	C3D-C4D	13.60	1.40	1.38
14	L	159	CLA	C3D-C4D	13.59	1.40	1.38
14	M	168	CLA	C3D-C4D	13.55	1.40	1.38
14	L	157	CLA	C3D-C4D	13.54	1.40	1.38
14	L	165	CLA	C3D-C4D	13.47	1.40	1.38
14	M	167	CLA	C3D-C4D	13.45	1.40	1.38
14	C	157	CLA	C3D-C4D	13.43	1.40	1.38
14	M	156	CLA	C3D-C4D	13.41	1.40	1.38
14	B	177	CLA	C3D-C4D	13.40	1.40	1.38
14	C	165	CLA	C3D-C4D	13.40	1.40	1.38
14	D	156	CLA	C3D-C4D	13.39	1.40	1.38
14	L	168	CLA	C3D-C4D	13.37	1.40	1.38
14	C	159	CLA	C3D-C4D	13.37	1.40	1.38
14	L	161	CLA	C3D-C4D	13.34	1.40	1.38
14	C	162	CLA	C3D-C4D	13.30	1.40	1.38
14	C	161	CLA	C3D-C4D	13.22	1.40	1.38
14	D	167	CLA	C3D-C4D	13.14	1.40	1.38
14	L	166	CLA	C3D-C4D	13.10	1.40	1.38
14	M	164	CLA	C3D-C4D	12.92	1.40	1.38
14	G	313	CLA	C3D-C4D	12.87	1.40	1.38
14	C	166	CLA	C3D-C4D	12.87	1.40	1.38
14	L	162	CLA	C3D-C4D	12.82	1.40	1.38
15	B	178	PHO	C3D-C4D	12.77	1.40	1.38
14	D	164	CLA	C3D-C4D	12.64	1.40	1.38
14	P	313	CLA	C3D-C4D	12.63	1.40	1.38

Continued on next page...

Continued from previous page...

Mol	Chain	Res	Type	Atoms	Z	Observed(Å)	Ideal(Å)
15	K	178	PHO	C3D-C4D	12.07	1.40	1.38
17	K	180	PLA	C6-N1	8.21	1.44	1.30
17	B	180	PLA	C6-N1	8.21	1.44	1.30
14	M	168	CLA	C2B-C1B	7.01	1.39	1.38
14	M	161	CLA	C2B-C1B	6.90	1.39	1.38
14	L	163	CLA	C2B-C1B	6.76	1.39	1.38
15	J	178	PHO	C2B-C1B	6.74	1.39	1.38
14	C	163	CLA	C2B-C1B	6.72	1.39	1.38
14	M	166	CLA	C2B-C1B	6.65	1.39	1.38
14	D	160	CLA	C2B-C1B	6.59	1.39	1.38
14	D	168	CLA	C2B-C1B	6.55	1.39	1.38
14	A	176	CLA	C2B-C1B	6.52	1.39	1.38
14	L	165	CLA	C2B-C1B	6.50	1.39	1.38
14	D	166	CLA	C2B-C1B	6.34	1.39	1.38
14	L	157	CLA	C2B-C1B	6.31	1.39	1.38
14	M	160	CLA	C2B-C1B	6.30	1.39	1.38
14	P	313	CLA	C2B-C1B	6.24	1.39	1.38
14	G	313	CLA	C2B-C1B	6.24	1.39	1.38
14	D	161	CLA	C2B-C1B	6.23	1.39	1.38
14	J	176	CLA	C2B-C1B	6.21	1.39	1.38
14	M	156	CLA	C2B-C1B	6.19	1.39	1.38
15	A	178	PHO	C2B-C1B	6.19	1.39	1.38
15	K	178	PHO	C2B-C1B	6.19	1.39	1.38
14	D	164	CLA	C2B-C1B	6.18	1.39	1.38
14	L	167	CLA	C2B-C1B	6.18	1.39	1.38
14	C	158	CLA	C2B-C1B	6.16	1.39	1.38
14	M	164	CLA	C2B-C1B	6.13	1.39	1.38
14	M	165	CLA	C2B-C1B	6.10	1.39	1.38
14	J	175	CLA	C2D-C1D	-6.10	1.38	1.38
14	L	158	CLA	C2B-C1B	6.07	1.39	1.38
14	C	166	CLA	C2B-C1B	6.04	1.39	1.38
14	D	157	CLA	C2B-C1B	6.01	1.39	1.38
14	C	164	CLA	C2B-C1B	6.00	1.39	1.38
15	B	178	PHO	C2B-C1B	5.96	1.39	1.38
14	K	177	CLA	C2B-C1B	5.94	1.39	1.38
14	D	165	CLA	C2B-C1B	5.91	1.39	1.38
14	B	177	CLA	C2B-C1B	5.90	1.39	1.38
14	C	165	CLA	C2B-C1B	5.86	1.39	1.38
14	D	167	CLA	C2B-C1B	5.83	1.39	1.38
14	M	163	CLA	C2B-C1B	5.79	1.39	1.38
14	L	162	CLA	C2B-C1B	5.78	1.39	1.38
14	D	158	CLA	C2B-C1B	5.77	1.39	1.38

Continued on next page...

Continued from previous page...

Mol	Chain	Res	Type	Atoms	Z	Observed(Å)	Ideal(Å)
14	C	157	CLA	C2B-C1B	5.75	1.39	1.38
14	A	175	CLA	C2D-C1D	-5.75	1.38	1.38
14	M	167	CLA	C2B-C1B	5.73	1.39	1.38
14	B	179	CLA	C2B-C1B	5.71	1.39	1.38
14	M	157	CLA	C2B-C1B	5.71	1.39	1.38
14	M	158	CLA	C2B-C1B	5.70	1.39	1.38
14	D	156	CLA	C2B-C1B	5.69	1.39	1.38
14	D	163	CLA	C2B-C1B	5.62	1.39	1.38
14	C	167	CLA	C2B-C1B	5.61	1.39	1.38
14	L	164	CLA	C2B-C1B	5.58	1.39	1.38
14	C	162	CLA	C2B-C1B	5.57	1.39	1.38
14	L	166	CLA	C2B-C1B	5.56	1.39	1.38
14	L	168	CLA	C2B-C1B	5.47	1.39	1.38
14	K	179	CLA	C2B-C1B	5.44	1.39	1.38
14	D	162	CLA	C2B-C1B	5.34	1.39	1.38
14	M	162	CLA	C2B-C1B	5.29	1.39	1.38
14	A	177	CLA	C2B-C1B	5.29	1.39	1.38
14	C	159	CLA	C2B-C1B	5.28	1.39	1.38
14	C	168	CLA	C2B-C1B	5.26	1.39	1.38
14	J	179	CLA	C2B-C1B	5.19	1.39	1.38
14	A	175	CLA	C2B-C1B	5.15	1.39	1.38
14	D	159	CLA	C2B-C1B	5.15	1.39	1.38
14	C	161	CLA	C2B-C1B	5.15	1.39	1.38
14	J	177	CLA	C2B-C1B	5.14	1.39	1.38
14	L	165	CLA	C2D-C1D	-5.06	1.38	1.38
14	C	160	CLA	C2B-C1B	5.03	1.39	1.38
14	A	179	CLA	C2B-C1B	5.00	1.39	1.38
14	M	161	CLA	C2D-C1D	-4.98	1.38	1.38
14	L	161	CLA	C2B-C1B	4.98	1.39	1.38
14	M	159	CLA	C2B-C1B	4.96	1.39	1.38
14	L	160	CLA	C2B-C1B	4.95	1.39	1.38
14	C	165	CLA	C2D-C1D	-4.92	1.38	1.38
14	C	161	CLA	C2D-C1D	-4.89	1.38	1.38
14	D	165	CLA	C2D-C1D	-4.89	1.38	1.38
14	C	160	CLA	C2D-C1D	-4.88	1.38	1.38
14	L	168	CLA	C2D-C1D	-4.86	1.38	1.38
14	L	159	CLA	C2B-C1B	4.86	1.39	1.38
14	C	158	CLA	C2D-C1D	-4.84	1.38	1.38
14	L	161	CLA	C2D-C1D	-4.76	1.38	1.38
14	M	166	CLA	C2D-C1D	-4.75	1.38	1.38
14	L	160	CLA	C2D-C1D	-4.74	1.38	1.38
14	D	161	CLA	C2D-C1D	-4.74	1.38	1.38

Continued on next page...

Continued from previous page...

Mol	Chain	Res	Type	Atoms	Z	Observed(Å)	Ideal(Å)
15	A	178	PHO	C4D-CHA	-4.72	1.38	1.44
15	J	178	PHO	C4D-CHA	-4.70	1.38	1.44
14	C	168	CLA	C2D-C1D	-4.69	1.38	1.38
15	B	178	PHO	C4D-CHA	-4.62	1.38	1.44
14	J	175	CLA	C2B-C1B	4.61	1.39	1.38
14	D	166	CLA	C2D-C1D	-4.60	1.38	1.38
14	J	177	CLA	C2D-C1D	-4.59	1.38	1.38
14	J	176	CLA	C2D-C1D	-4.58	1.38	1.38
14	M	165	CLA	C2D-C1D	-4.57	1.38	1.38
14	A	179	CLA	C2D-C1D	-4.57	1.38	1.38
14	D	160	CLA	C2D-C1D	-4.54	1.38	1.38
14	M	158	CLA	C2D-C1D	-4.54	1.38	1.38
14	L	163	CLA	C2D-C1D	-4.54	1.38	1.38
15	K	178	PHO	C4D-CHA	-4.53	1.38	1.44
14	L	158	CLA	C2D-C1D	-4.52	1.38	1.38
14	M	160	CLA	C2D-C1D	-4.50	1.38	1.38
15	K	178	PHO	C4C-CHD	4.49	1.40	1.35
15	A	178	PHO	C4C-CHD	4.47	1.40	1.35
14	A	176	CLA	C2D-C1D	-4.46	1.38	1.38
14	L	157	CLA	C2D-C1D	-4.45	1.38	1.38
15	J	178	PHO	C4C-CHD	4.44	1.40	1.35
15	B	178	PHO	C4C-CHD	4.44	1.40	1.35
14	C	164	CLA	C2D-C1D	-4.44	1.38	1.38
14	G	313	CLA	C2D-C1D	-4.42	1.38	1.38
14	D	163	CLA	C2D-C1D	-4.34	1.38	1.38
14	D	158	CLA	C2D-C1D	-4.30	1.38	1.38
14	M	167	CLA	C2D-C1D	-4.30	1.38	1.38
14	D	167	CLA	C2D-C1D	-4.29	1.38	1.38
14	A	177	CLA	C2D-C1D	-4.28	1.38	1.38
14	L	164	CLA	C2D-C1D	-4.27	1.38	1.38
14	C	166	CLA	C2D-C1D	-4.26	1.38	1.38
14	M	159	CLA	C2D-C1D	-4.25	1.38	1.38
14	C	163	CLA	C2D-C1D	-4.23	1.38	1.38
14	D	159	CLA	C2D-C1D	-4.22	1.38	1.38
14	C	157	CLA	C2D-C1D	-4.21	1.38	1.38
14	M	163	CLA	C2D-C1D	-4.21	1.38	1.38
14	L	166	CLA	C2D-C1D	-4.20	1.38	1.38
14	J	179	CLA	C2D-C1D	-4.18	1.38	1.38
14	D	162	CLA	C2D-C1D	-4.13	1.38	1.38
14	P	313	CLA	C2D-C1D	-4.08	1.38	1.38
14	L	162	CLA	C2D-C1D	-4.08	1.38	1.38
15	J	178	PHO	C1C-CHC	4.01	1.39	1.35

Continued on next page...

Continued from previous page...

Mol	Chain	Res	Type	Atoms	Z	Observed(Å)	Ideal(Å)
14	D	168	CLA	C2D-C1D	-4.01	1.38	1.38
14	C	162	CLA	C2D-C1D	-4.00	1.38	1.38
15	B	178	PHO	C1C-CHC	4.00	1.39	1.35
15	K	178	PHO	C1C-CHC	4.00	1.39	1.35
14	L	159	CLA	C2D-C1D	-3.99	1.38	1.38
15	A	178	PHO	C1C-CHC	3.97	1.39	1.35
14	D	164	CLA	C2D-C1D	-3.92	1.38	1.38
14	C	159	CLA	C2D-C1D	-3.92	1.38	1.38
14	C	167	CLA	C2D-C1D	-3.90	1.38	1.38
14	M	164	CLA	C2D-C1D	-3.82	1.38	1.38
14	K	179	CLA	C2D-C1D	-3.74	1.38	1.38
14	M	162	CLA	C2D-C1D	-3.72	1.38	1.38
14	L	167	CLA	C2D-C1D	-3.72	1.38	1.38
14	D	156	CLA	C2D-C1D	-3.66	1.38	1.38
14	K	177	CLA	C2D-C1D	-3.60	1.38	1.38
14	M	168	CLA	C2D-C1D	-3.55	1.38	1.38
15	K	178	PHO	C2D-C1D	-3.52	1.38	1.38
14	M	156	CLA	C2D-C1D	-3.45	1.38	1.38
15	A	178	PHO	C2D-C1D	-3.42	1.38	1.38
14	D	157	CLA	C2D-C1D	-3.39	1.38	1.38
14	B	177	CLA	C2D-C1D	-3.36	1.38	1.38
15	B	178	PHO	C2D-C1D	-3.33	1.38	1.38
15	J	178	PHO	C2D-C1D	-3.28	1.38	1.38
14	B	179	CLA	C2D-C1D	-3.22	1.38	1.38
16	R	88	HEM	FE-NA	3.16	2.06	1.92
16	I	88	HEM	FE-NA	3.16	2.06	1.92
16	O	58	HEM	FE-NA	3.16	2.06	1.92
16	F	31	HEM	FE-NA	3.16	2.06	1.92
14	M	157	CLA	C2D-C1D	-3.11	1.38	1.38
16	O	58	HEM	FE-NB	3.08	2.09	1.97
16	F	31	HEM	FE-NB	3.08	2.09	1.97
16	I	88	HEM	FE-NB	3.05	2.09	1.97
16	R	88	HEM	FE-NB	3.05	2.08	1.97
16	F	31	HEM	C4D-ND	-2.90	1.34	1.39
16	I	88	HEM	C4D-ND	-2.89	1.34	1.39
16	R	88	HEM	C4D-ND	-2.89	1.34	1.39
16	O	58	HEM	C4D-ND	-2.87	1.34	1.39
15	K	178	PHO	C1B-CHB	-2.59	1.40	1.47
16	F	31	HEM	FE-NC	2.59	2.07	1.97
15	B	178	PHO	C1B-CHB	-2.58	1.40	1.47
15	J	178	PHO	C1B-CHB	-2.58	1.40	1.47
16	O	58	HEM	FE-NC	2.58	2.07	1.97

Continued on next page...

Continued from previous page...

Mol	Chain	Res	Type	Atoms	Z	Observed(Å)	Ideal(Å)
16	I	88	HEM	FE-NC	2.58	2.07	1.97
16	R	88	HEM	FE-NC	2.57	2.07	1.97
15	A	178	PHO	C1D-CHD	-2.57	1.40	1.47
15	A	178	PHO	C1B-CHB	-2.57	1.40	1.47
15	K	178	PHO	C1D-CHD	-2.56	1.40	1.47
15	B	178	PHO	C1D-CHD	-2.56	1.40	1.47
15	J	178	PHO	C1D-CHD	-2.55	1.40	1.47
13	A	174	TYR	CB-CG	2.45	1.51	1.40
15	A	178	PHO	C4B-CHC	-2.45	1.40	1.47
13	B	176	TYR	CB-CG	2.45	1.51	1.40
13	K	176	TYR	CB-CG	2.44	1.51	1.40
13	J	174	TYR	CB-CG	2.44	1.51	1.40
15	J	178	PHO	C4B-CHC	-2.44	1.40	1.47
15	K	178	PHO	C4B-CHC	-2.39	1.40	1.47
17	B	180	PLA	C6-C5	2.39	1.46	1.39
15	B	178	PHO	C4B-CHC	-2.39	1.40	1.47
17	K	180	PLA	C6-C5	2.38	1.46	1.39
15	A	178	PHO	C4D-ND	-2.37	1.34	1.37
15	J	178	PHO	C4D-ND	-2.36	1.34	1.37
15	B	178	PHO	C4D-ND	-2.24	1.35	1.37
15	K	178	PHO	C4D-ND	-2.21	1.35	1.37

All (152) bond angle outliers are listed below:

Mol	Chain	Res	Type	Atoms	Z	Observed(°)	Ideal(°)
14	L	157	CLA	C4B-CHC-C1C	3.48	132.05	127.47
14	C	157	CLA	C4B-CHC-C1C	3.43	131.98	127.47
14	L	167	CLA	C4B-CHC-C1C	3.42	131.97	127.47
14	L	166	CLA	C4B-CHC-C1C	3.41	131.96	127.47
14	C	167	CLA	C4B-CHC-C1C	3.41	131.96	127.47
14	L	162	CLA	C4B-CHC-C1C	3.40	131.95	127.47
14	C	166	CLA	C4B-CHC-C1C	3.40	131.95	127.47
14	M	157	CLA	C4B-CHC-C1C	3.40	131.94	127.47
14	K	177	CLA	C4B-CHC-C1C	3.39	131.93	127.47
14	D	157	CLA	C4B-CHC-C1C	3.39	131.93	127.47
14	D	158	CLA	C4B-CHC-C1C	3.39	131.93	127.47
14	B	177	CLA	C4B-CHC-C1C	3.39	131.93	127.47
14	M	158	CLA	C4B-CHC-C1C	3.38	131.93	127.47
14	C	165	CLA	C4B-CHC-C1C	3.38	131.92	127.47
14	L	163	CLA	C4B-CHC-C1C	3.38	131.92	127.47
14	C	163	CLA	C4B-CHC-C1C	3.38	131.91	127.47
14	J	179	CLA	C4B-CHC-C1C	3.37	131.91	127.47

Continued on next page...

Continued from previous page...

Mol	Chain	Res	Type	Atoms	Z	Observed(°)	Ideal(°)
14	M	161	CLA	C4B-CHC-C1C	3.37	131.91	127.47
14	B	179	CLA	C4B-CHC-C1C	3.37	131.91	127.47
14	J	176	CLA	C4B-CHC-C1C	3.36	131.90	127.47
14	M	168	CLA	C4B-CHC-C1C	3.36	131.90	127.47
14	D	161	CLA	C4B-CHC-C1C	3.36	131.89	127.47
14	G	313	CLA	C4B-CHC-C1C	3.36	131.89	127.47
14	L	161	CLA	C4B-CHC-C1C	3.35	131.88	127.47
14	C	162	CLA	C4B-CHC-C1C	3.35	131.88	127.47
14	L	160	CLA	C4B-CHC-C1C	3.35	131.88	127.47
14	D	156	CLA	C4B-CHC-C1C	3.35	131.88	127.47
14	M	162	CLA	C4B-CHC-C1C	3.35	131.88	127.47
14	C	168	CLA	C4B-CHC-C1C	3.35	131.87	127.47
14	A	179	CLA	C4B-CHC-C1C	3.35	131.87	127.47
14	D	164	CLA	C4B-CHC-C1C	3.34	131.87	127.47
14	L	158	CLA	C4B-CHC-C1C	3.34	131.87	127.47
14	P	313	CLA	C4B-CHC-C1C	3.34	131.87	127.47
14	A	177	CLA	C4B-CHC-C1C	3.34	131.87	127.47
14	L	165	CLA	C4B-CHC-C1C	3.34	131.87	127.47
14	M	165	CLA	C4B-CHC-C1C	3.34	131.87	127.47
14	A	176	CLA	C4B-CHC-C1C	3.34	131.87	127.47
14	D	167	CLA	C4B-CHC-C1C	3.34	131.87	127.47
14	D	162	CLA	C4B-CHC-C1C	3.34	131.87	127.47
14	C	158	CLA	C4B-CHC-C1C	3.34	131.87	127.47
14	D	168	CLA	C4B-CHC-C1C	3.34	131.87	127.47
14	K	179	CLA	C4B-CHC-C1C	3.34	131.87	127.47
14	M	159	CLA	C4B-CHC-C1C	3.34	131.86	127.47
14	M	167	CLA	C4B-CHC-C1C	3.34	131.86	127.47
14	J	175	CLA	C4B-CHC-C1C	3.33	131.86	127.47
14	J	177	CLA	C4B-CHC-C1C	3.33	131.86	127.47
14	M	160	CLA	C4B-CHC-C1C	3.33	131.85	127.47
14	D	159	CLA	C4B-CHC-C1C	3.33	131.85	127.47
14	A	175	CLA	C4B-CHC-C1C	3.33	131.85	127.47
14	C	160	CLA	C4B-CHC-C1C	3.33	131.85	127.47
14	C	161	CLA	C4B-CHC-C1C	3.33	131.85	127.47
14	D	166	CLA	C4B-CHC-C1C	3.32	131.84	127.47
14	M	156	CLA	C4B-CHC-C1C	3.32	131.84	127.47
14	D	165	CLA	C4B-CHC-C1C	3.32	131.84	127.47
14	D	163	CLA	C4B-CHC-C1C	3.32	131.84	127.47
14	L	168	CLA	C4B-CHC-C1C	3.32	131.84	127.47
14	C	159	CLA	C4B-CHC-C1C	3.32	131.84	127.47
14	D	160	CLA	C4B-CHC-C1C	3.31	131.83	127.47
14	M	164	CLA	C4B-CHC-C1C	3.31	131.83	127.47

Continued on next page...

Continued from previous page...

Mol	Chain	Res	Type	Atoms	Z	Observed(°)	Ideal(°)
14	M	166	CLA	C4B-CHC-C1C	3.31	131.83	127.47
14	M	163	CLA	C4B-CHC-C1C	3.31	131.83	127.47
14	C	164	CLA	C4B-CHC-C1C	3.31	131.82	127.47
14	L	164	CLA	C4B-CHC-C1C	3.29	131.80	127.47
14	L	159	CLA	C4B-CHC-C1C	3.27	131.78	127.47
13	K	176	TYR	CD2-CG-CD1	3.15	118.09	114.14
13	B	176	TYR	CD2-CG-CD1	3.13	118.07	114.14
13	A	174	TYR	CD2-CG-CD1	3.13	118.06	114.14
13	J	174	TYR	CD2-CG-CD1	3.11	118.05	114.14
16	I	88	HEM	CHC-C4B-NB	-2.74	120.36	124.31
16	R	88	HEM	CHC-C4B-NB	-2.73	120.37	124.31
16	I	88	HEM	CHA-C4D-ND	2.73	126.85	123.97
16	F	31	HEM	CHA-C4D-ND	2.70	126.83	123.97
16	O	58	HEM	CHC-C4B-NB	-2.70	120.42	124.31
16	F	31	HEM	CHC-C4B-NB	-2.69	120.43	124.31
16	O	58	HEM	CHA-C4D-ND	2.67	126.79	123.97
16	R	88	HEM	CHA-C4D-ND	2.66	126.78	123.97
14	L	157	CLA	CHC-C4B-NB	-2.60	120.23	124.58
14	C	157	CLA	CHC-C4B-NB	-2.58	120.26	124.58
14	D	158	CLA	CHC-C4B-NB	-2.58	120.26	124.58
14	L	167	CLA	CHC-C4B-NB	-2.58	120.27	124.58
14	C	166	CLA	CHC-C4B-NB	-2.58	120.27	124.58
14	D	157	CLA	CHC-C4B-NB	-2.58	120.27	124.58
14	B	179	CLA	CHC-C4B-NB	-2.58	120.28	124.58
14	M	158	CLA	CHC-C4B-NB	-2.58	120.28	124.58
14	M	157	CLA	CHC-C4B-NB	-2.57	120.28	124.58
14	L	166	CLA	CHC-C4B-NB	-2.57	120.28	124.58
14	C	167	CLA	CHC-C4B-NB	-2.56	120.31	124.58
14	C	163	CLA	CHC-C4B-NB	-2.56	120.31	124.58
14	M	168	CLA	CHC-C4B-NB	-2.56	120.31	124.58
14	L	160	CLA	CHC-C4B-NB	-2.55	120.31	124.58
14	M	161	CLA	CHC-C4B-NB	-2.55	120.32	124.58
14	C	168	CLA	CHC-C4B-NB	-2.55	120.32	124.58
14	L	162	CLA	CHC-C4B-NB	-2.55	120.32	124.58
14	D	161	CLA	CHC-C4B-NB	-2.55	120.32	124.58
14	K	179	CLA	CHC-C4B-NB	-2.54	120.33	124.58
14	D	164	CLA	CHC-C4B-NB	-2.54	120.33	124.58
14	C	165	CLA	CHC-C4B-NB	-2.54	120.33	124.58
14	M	162	CLA	CHC-C4B-NB	-2.54	120.34	124.58
14	L	168	CLA	CHC-C4B-NB	-2.54	120.34	124.58
14	D	168	CLA	CHC-C4B-NB	-2.54	120.34	124.58
14	K	177	CLA	CHC-C4B-NB	-2.54	120.34	124.58

Continued on next page...

Continued from previous page...

Mol	Chain	Res	Type	Atoms	Z	Observed(°)	Ideal(°)
14	G	313	CLA	CHC-C4B-NB	-2.54	120.34	124.58
14	J	177	CLA	CHC-C4B-NB	-2.54	120.34	124.58
14	D	162	CLA	CHC-C4B-NB	-2.53	120.34	124.58
14	A	176	CLA	CHC-C4B-NB	-2.53	120.34	124.58
14	D	163	CLA	CHC-C4B-NB	-2.53	120.34	124.58
14	J	176	CLA	CHC-C4B-NB	-2.53	120.35	124.58
14	D	159	CLA	CHC-C4B-NB	-2.53	120.35	124.58
14	L	163	CLA	CHC-C4B-NB	-2.53	120.35	124.58
14	M	159	CLA	CHC-C4B-NB	-2.53	120.35	124.58
14	A	177	CLA	CHC-C4B-NB	-2.53	120.35	124.58
14	L	164	CLA	CHC-C4B-NB	-2.53	120.36	124.58
14	C	160	CLA	CHC-C4B-NB	-2.53	120.36	124.58
14	M	164	CLA	CHC-C4B-NB	-2.53	120.36	124.58
14	A	175	CLA	CHC-C4B-NB	-2.52	120.36	124.58
14	L	161	CLA	CHC-C4B-NB	-2.52	120.36	124.58
14	D	166	CLA	CHC-C4B-NB	-2.52	120.37	124.58
14	B	177	CLA	CHC-C4B-NB	-2.52	120.37	124.58
14	C	162	CLA	CHC-C4B-NB	-2.52	120.37	124.58
14	C	158	CLA	CHC-C4B-NB	-2.52	120.38	124.58
14	J	179	CLA	CHC-C4B-NB	-2.52	120.38	124.58
14	L	158	CLA	CHC-C4B-NB	-2.52	120.38	124.58
14	D	160	CLA	CHC-C4B-NB	-2.51	120.38	124.58
14	M	163	CLA	CHC-C4B-NB	-2.51	120.38	124.58
14	M	166	CLA	CHC-C4B-NB	-2.51	120.38	124.58
14	J	175	CLA	CHC-C4B-NB	-2.51	120.38	124.58
14	C	164	CLA	CHC-C4B-NB	-2.51	120.39	124.58
14	M	160	CLA	CHC-C4B-NB	-2.51	120.38	124.58
14	P	313	CLA	CHC-C4B-NB	-2.51	120.39	124.58
14	A	179	CLA	CHC-C4B-NB	-2.51	120.39	124.58
14	M	167	CLA	CHC-C4B-NB	-2.51	120.39	124.58
14	M	156	CLA	CHC-C4B-NB	-2.50	120.39	124.58
14	L	165	CLA	CHC-C4B-NB	-2.51	120.39	124.58
14	C	161	CLA	CHC-C4B-NB	-2.50	120.39	124.58
14	D	165	CLA	CHC-C4B-NB	-2.50	120.40	124.58
14	D	167	CLA	CHC-C4B-NB	-2.50	120.41	124.58
14	M	165	CLA	CHC-C4B-NB	-2.49	120.41	124.58
14	D	156	CLA	CHC-C4B-NB	-2.49	120.42	124.58
14	C	159	CLA	CHC-C4B-NB	-2.45	120.49	124.58
14	L	159	CLA	CHC-C4B-NB	-2.43	120.52	124.58
16	R	88	HEM	C1C-CHC-C4B	2.29	131.90	123.47
16	I	88	HEM	C1C-CHC-C4B	2.29	131.89	123.47
16	O	58	HEM	C1C-CHC-C4B	2.26	131.78	123.47

Continued on next page...

Continued from previous page...

Mol	Chain	Res	Type	Atoms	Z	Observed(°)	Ideal(°)
16	F	31	HEM	C1C-CHC-C4B	2.25	131.75	123.47
15	A	178	PHO	CHB-C4A-NA	2.09	126.81	124.33
15	J	178	PHO	CHB-C4A-NA	2.09	126.80	124.33
13	J	174	TYR	CB-CG-CD1	-2.07	120.83	122.94
15	B	178	PHO	CHB-C4A-NA	2.06	126.77	124.33
13	K	176	TYR	CB-CG-CD1	-2.05	120.86	122.94
15	K	178	PHO	CHB-C4A-NA	2.04	126.75	124.33
13	A	174	TYR	CB-CG-CD1	-2.03	120.88	122.94
13	B	176	TYR	CB-CG-CD1	-2.02	120.88	122.94

There are no chirality outliers.

There are no torsion outliers.

There are no ring outliers.

5.7 Other polymers ⓘ

There are no such residues in this entry.

5.8 Polymer linkage issues

There are no chain breaks in this entry.

6 Fit of model and data ⓘ

6.1 Protein, DNA and RNA chains ⓘ

EDS was not executed - this section will therefore be empty.

6.2 Non-standard residues in protein, DNA, RNA chains ⓘ

EDS was not executed - this section will therefore be empty.

6.3 Carbohydrates ⓘ

EDS was not executed - this section will therefore be empty.

6.4 Ligands ⓘ

EDS was not executed - this section will therefore be empty.

6.5 Other polymers ⓘ

EDS was not executed - this section will therefore be empty.