



# Full wwPDB X-ray Structure Validation Report ⓘ

Feb 26, 2014 – 06:12 PM GMT

PDB ID : 1FEH  
Title : FE-ONLY HYDROGENASE FROM CLOSTRIDIUM PASTEURIANUM  
Authors : Peters, J.W.; Lanzilotta, W.N.; Lemon, B.J.; Seefeldt, L.C.  
Deposited on : 1998-10-28  
Resolution : 1.80 Å(reported)

This is a full wwPDB validation report for a publicly released PDB entry.  
We welcome your comments at [validation@mail.wwpdb.org](mailto:validation@mail.wwpdb.org)  
A user guide is available at <http://wwpdb.org/ValidationPDFNotes.html>

---

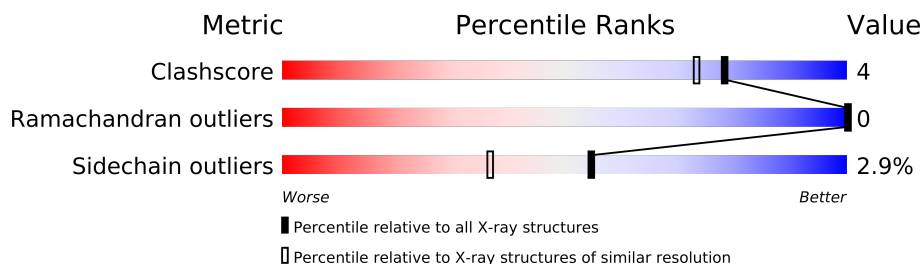
The following versions of software and data (see [references](#)) were used in the production of this report:

MolProbity : 4.02b-467  
Mogul : 1.15 2013  
Xtriage (Phenix) : NOT EXECUTED  
EDS : NOT EXECUTED  
Percentile statistics : 21963  
Ideal geometry (proteins) : Engh & Huber (2001)  
Ideal geometry (DNA, RNA) : Parkinson et. al. (1996)  
Validation Pipeline (wwPDB-VP) : stable22683

# 1 Overall quality at a glance

The reported resolution of this entry is 1.80 Å.


Percentile scores (ranging between 0-100) for global validation metrics of the entry are shown in the following graphic. The table shows the number of entries on which the scores are based.



Metric	Whole archive (#Entries)	Similar resolution (#Entries, resolution range(Å))
Clashscore	79885	4461 (1.80-1.80)
Ramachandran outliers	78287	4404 (1.80-1.80)
Sidechain outliers	78261	4403 (1.80-1.80)

The table below summarises the geometric issues observed across the polymeric chains and their fit to the electron density. The red, orange, yellow and green segments on the lower bar indicate the fraction of residues that contain outliers for  $\geq 3$ , 2, 1 and 0 types of geometric quality criteria. The upper red bar (where present) indicates the fraction of residues that have poor fit to the electron density.

Note EDS was not executed.

Mol	Chain	Length	Quality of chain
1	A	574	

## 2 Entry composition i

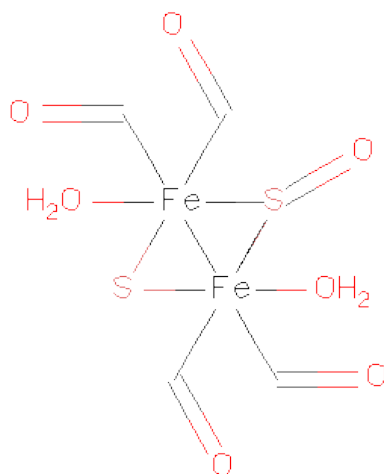
There are 5 unique types of molecules in this entry. The entry contains 5289 atoms, of which 0 are hydrogen and 0 are deuterium.

In the tables below, the ZeroOcc column contains the number of atoms modelled with zero occupancy, the AltConf column contains the number of residues with at least one atom in alternate conformation and the Trace column contains the number of residues modelled with at most 2 atoms.

- Molecule 1 is a protein called PROTEIN (PERIPLASMIC HYDROGENASE 1).

Mol	Chain	Residues	Atoms					ZeroOcc	AltConf	Trace
1	A	574	Total	C	N	O	S	0	0	0
			4461	2795	767	859	40			

- Molecule 2 is 2 IRON/2 SULFUR/5 CARBONYL/2 WATER INORGANIC CLUSTER (three-letter code: HC1) (formula:  $C_5H_8Fe_2O_7S_2$ ).



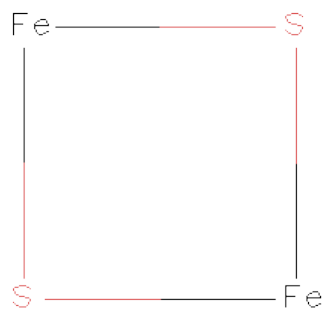
Mol	Chain	Residues	Atoms					ZeroOcc	AltConf
2	A	1	Total	C	Fe	O	S	0	0
			16	5	2	7	2		

- Molecule 3 is IRON/SULFUR CLUSTER (three-letter code: SF4) (formula:  $Fe_4S_4$ ).



Mol	Chain	Residues	Atoms			ZeroOcc	AltConf
3	A	1	Total	Fe	S	0	0
			8	4	4		
3	A	1	Total	Fe	S	0	0
			8	4	4		
3	A	1	Total	Fe	S	0	0
			8	4	4		
3	A	1	Total	Fe	S	0	0
			8	4	4		

- Molecule 4 is FE2/S2 (INORGANIC) CLUSTER (three-letter code: FES) (formula:  $\text{Fe}_2\text{S}_2$ ).



Mol	Chain	Residues	Atoms			ZeroOcc	AltConf
4	A	1	Total	Fe	S	0	0
			4	2	2		

- Molecule 5 is water.

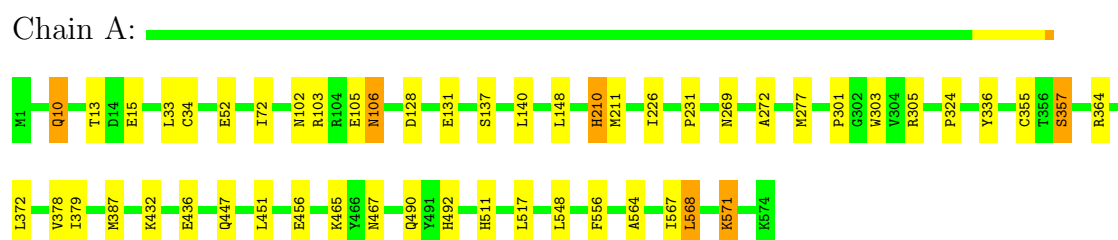
Mol	Chain	Residues	Atoms		ZeroOcc	AltConf
5	A	776	Total	O	0	0
			776	776		

### 3 Residue-property plots

These plots are drawn for all protein, RNA and DNA chains in the entry. The first graphic for a chain summarises the proportions of errors displayed in the second graphic. The second graphic shows the sequence view annotated by issues in geometry and electron density. Residues are color-coded according to the number of geometric quality criteria for which they contain at least one outlier: green = 0, yellow = 1, orange = 2 and red = 3 or more. A red dot above a residue indicates a poor fit to the electron density ( $RSRZ > 2$ ). Stretches of 2 or more consecutive residues without any outlier are shown as a green connector. Residues present in the sample, but not in the model, are shown in grey.

Note EDS was not executed.

- Molecule 1: PROTEIN (PERIPLASMIC HYDROGENASE 1)



## 4 Data and refinement statistics

Xtriage (Phenix) and EDS were not executed - this section will therefore be incomplete.

Property	Value	Source
Space group	P 42 21 2	Depositor
Cell constants a, b, c, $\alpha$ , $\beta$ , $\gamma$	111.60Å 111.60Å 103.80Å 90.00° 90.00° 90.00°	Depositor
Resolution (Å)	20.00 – 1.80	Depositor
% Data completeness (in resolution range)	86.3 (20.00-1.80)	Depositor
$R_{merge}$	0.07	Depositor
$R_{sym}$	(Not available)	Depositor
Refinement program	X-PLOR 3.8	Depositor
R, $R_{free}$	0.180 , 0.235	Depositor
Estimated twinning fraction	No twinning to report.	Xtriage
Total number of atoms	5289	wwPDB-VP
Average B, all atoms (Å <sup>2</sup> )	18.0	wwPDB-VP

## 5 Model quality

### 5.1 Standard geometry

Bond lengths and bond angles in the following residue types are not validated in this section: SF4, HC1, FES

The Z score for a bond length (or angle) is the number of standard deviations the observed value is removed from the expected value. A bond length (or angle) with  $|Z| > 5$  is considered an outlier worth inspection. RMSZ is the root-mean-square of all Z scores of the bond lengths (or angles).

Mol	Chain	Bond lengths		Bond angles	
		RMSZ	$\# Z  > 5$	RMSZ	$\# Z  > 5$
1	A	0.61	0/4534	1.02	8/6103 (0.1%)

There are no bond length outliers.

All (8) bond angle outliers are listed below:

Mol	Chain	Res	Type	Atoms	Z	Observed(°)	Ideal(°)
1	A	303	TRP	CE2-CD2-CG	-7.39	101.39	107.30
1	A	303	TRP	CD1-CG-CD2	7.35	112.18	106.30
1	A	364	ARG	NE-CZ-NH1	6.47	123.54	120.30
1	A	303	TRP	CB-CG-CD1	-6.31	118.79	127.00
1	A	34	CYS	CA-CB-SG	5.93	124.68	114.00
1	A	303	TRP	CG-CD2-CE3	5.75	139.07	133.90
1	A	364	ARG	NE-CZ-NH2	-5.61	117.50	120.30
1	A	305	ARG	NE-CZ-NH1	5.39	122.99	120.30

There are no chirality outliers.

There are no planarity outliers.

### 5.2 Close contacts

In the following table, the Non-H and H(model) columns list the number of non-hydrogen atoms and hydrogen atoms in the chain respectively. The H(added) column lists the number of hydrogens added by MolProbity. The Clashes column lists the number of clashes within the asymmetric unit, and the number in parentheses is this value normalized per 1000 atoms of the molecule in the chain. The Symm-Clashes column gives symmetry related clashes, in the same way as for the Clashes column.

Mol	Chain	Non-H	H(model)	H(added)	Clashes	Symm-Clashes
1	A	4461	0	4430	30	0

*Continued on next page...*



*Continued from previous page...*

Mol	Chain	Non-H	H(model)	H(added)	Clashes	Symm-Clashes
2	A	16	0	0	2	0
3	A	32	0	0	1	0
4	A	4	0	0	0	0
5	A	776	0	0	4	2
All	All	5289	0	4430	32	2

Clashscore is defined as the number of clashes calculated for the entry per 1000 atoms (including hydrogens) of the entry. The overall clashscore for this entry is 4.

All (32) close contacts within the same asymmetric unit are listed below.

Atom-1	Atom-2	Distance(Å)	Clash(Å)
1:A:556:PHE:HE1	1:A:567:ILE:HD11	1.58	0.69
1:A:467:ASN:H	1:A:492:HIS:HD2	1.44	0.66
1:A:210:HIS:HD2	1:A:378:VAL:H	1.45	0.64
1:A:567:ILE:HG13	1:A:568:LEU:HD13	1.89	0.55
2:A:580:HC1:O1	2:A:580:HC1:S2	2.64	0.55
1:A:277:MET:HG3	1:A:548:LEU:HD21	1.89	0.54
1:A:210:HIS:CD2	1:A:378:VAL:H	2.27	0.52
1:A:432:LYS:O	1:A:436:GLU:HG2	2.11	0.51
1:A:379:ILE:HD13	1:A:387:MET:HE3	1.93	0.50
1:A:33:LEU:HD21	1:A:148:LEU:HD13	1.94	0.50
1:A:103:ARG:HE	1:A:106:ASN:ND2	2.09	0.50
1:A:564:ALA:HA	1:A:568:LEU:HD22	1.95	0.49
2:A:580:HC1:O1	2:A:580:HC1:S1	2.70	0.49
1:A:355:CYS:HB2	3:A:581:SF4:S3	2.53	0.48
1:A:210:HIS:HE1	5:A:962:HOH:O	1.97	0.47
1:A:128:ASP:O	1:A:131:GLU:HG2	2.15	0.47
1:A:13:THR:OG1	1:A:15:GLU:HG2	2.15	0.47
1:A:301:PRO:HG2	1:A:357:SER:HB3	1.96	0.47
1:A:52:GLU:O	1:A:72:ILE:HA	2.15	0.46
1:A:105:GLU:HG2	5:A:967:HOH:O	2.16	0.45
1:A:564:ALA:O	1:A:568:LEU:HB2	2.16	0.45
1:A:272:ALA:HA	1:A:324:PRO:HG3	1.98	0.45
1:A:10:GLN:H	1:A:10:GLN:NE2	2.17	0.43
1:A:231:PRO:HG3	1:A:269:ASN:ND2	2.33	0.42
1:A:571:LYS:HE2	1:A:571:LYS:HB2	1.92	0.42
1:A:137:SER:HB3	1:A:140:LEU:O	2.19	0.41
1:A:387:MET:HE2	1:A:387:MET:HB2	1.92	0.41
1:A:211:MET:SD	1:A:387:MET:HE2	2.61	0.41
1:A:226:ILE:HD11	1:A:336:TYR:CD2	2.56	0.40
1:A:379:ILE:CD1	1:A:387:MET:HE3	2.51	0.40
1:A:301:PRO:HB2	5:A:679:HOH:O	2.21	0.40

*Continued on next page...*

*Continued from previous page...*

Atom-1	Atom-2	Distance(Å)	Clash(Å)
1:A:511:HIS:HD2	5:A:603:HOH:O	2.04	0.40

All (2) symmetry-related close contacts are listed below. The label for Atom-2 includes the symmetry operator and encoded unit-cell translations to be applied.

Atom-1	Atom-2	Distance(Å)	Clash(Å)
5:A:1059:HOH:O	5:A:1250:HOH:O[8_666]	2.16	0.04
5:A:693:HOH:O	5:A:1335:HOH:O[8_666]	2.17	0.03

## 5.3 Torsion angles

### 5.3.1 Protein backbone ⓘ

In the following table, the Percentiles column shows the percent Ramachandran outliers of the chain as a percentile score with respect to all X-ray entries followed by that with respect to entries of similar resolution. The Analysed column shows the number of residues for which the backbone conformation was analysed, and the total number of residues.

Mol	Chain	Analysed	Favoured	Allowed	Outliers	Percentiles	
1	A	572/574 (100%)	558 (98%)	14 (2%)	0	100	100

There are no Ramachandran outliers to report.

### 5.3.2 Protein sidechains ⓘ

In the following table, the Percentiles column shows the percent sidechain outliers of the chain as a percentile score with respect to all X-ray entries followed by that with respect to entries of similar resolution. The Analysed column shows the number of residues for which the sidechain conformation was analysed, and the total number of residues.

Mol	Chain	Analysed	Rotameric	Outliers	Percentiles	
1	A	490/490 (100%)	476 (97%)	14 (3%)	55	37

All (14) residues with a non-rotameric sidechain are listed below:

Mol	Chain	Res	Type
1	A	10	GLN
1	A	102	ASN
1	A	106	ASN
1	A	210	HIS

*Continued on next page...*

*Continued from previous page...*

Mol	Chain	Res	Type
1	A	357	SER
1	A	372	LEU
1	A	447	GLN
1	A	451	LEU
1	A	456	GLU
1	A	465	LYS
1	A	490	GLN
1	A	517	LEU
1	A	568	LEU
1	A	571	LYS

Some sidechains can be flipped to improve hydrogen bonding and reduce clashes. All (24) such sidechains are listed below:

Mol	Chain	Res	Type
1	A	10	GLN
1	A	12	ASN
1	A	26	ASN
1	A	73	ASN
1	A	75	ASN
1	A	80	ASN
1	A	102	ASN
1	A	106	ASN
1	A	160	ASN
1	A	189	ASN
1	A	195	GLN
1	A	210	HIS
1	A	224	HIS
1	A	269	ASN
1	A	306	GLN
1	A	316	ASN
1	A	325	GLN
1	A	326	GLN
1	A	447	GLN
1	A	490	GLN
1	A	492	HIS
1	A	511	HIS
1	A	536	HIS
1	A	569	HIS

### 5.3.3 RNA ⓘ

There are no RNA chains in this entry.

## 5.4 Non-standard residues in protein, DNA, RNA chains ⓘ

There are no non-standard protein/DNA/RNA residues in this entry.

## 5.5 Carbohydrates ⓘ

There are no carbohydrates in this entry.

## 5.6 Ligand geometry ⓘ

6 ligands are modelled in this entry.

In the following table, the Counts columns list the number of bonds (or angles) for which Mogul statistics could be retrieved, the number of bonds (or angles) that are observed in the model and the number of bonds (or angles) that are defined in the chemical component dictionary. The Link column lists molecule types, if any, to which the group is linked. The Z score for a bond length (or angle) is the number of standard deviations the observed value is removed from the expected value. A bond length (or angle) with  $|Z| > 2$  is considered an outlier worth inspection. RMSZ is the root-mean-square of all Z scores of the bond lengths (or angles).

Mol	Type	Chain	Res	Link	Bond lengths			Bond angles		
					Counts	RMSZ	# $ Z  > 2$	Counts	RMSZ	# $ Z  > 2$
2	HC1	A	580	1	5,18,18	0.55	0	0,51,51	0.00	-
3	SF4	A	581	1	12,12,12	4.83	7 (58%)	0,24,24	0.00	-
3	SF4	A	582	1	12,12,12	5.00	7 (58%)	0,24,24	0.00	-
3	SF4	A	583	1	12,12,12	3.70	4 (33%)	0,24,24	0.00	-
3	SF4	A	584	1	12,12,12	6.71	8 (66%)	0,24,24	0.00	-
4	FES	A	585	1	0,4,4	0.00	-	0,4,4	0.00	-

In the following table, the Chirals column lists the number of chiral outliers, the number of chiral centers analysed, the number of these observed in the model and the number defined in the chemical component dictionary. Similar counts are reported in the Torsion and Rings columns. '-' means no outliers of that kind were identified.

Mol	Type	Chain	Res	Link	Chirals	Torsions	Rings
2	HC1	A	580	1	-	0/0/99/99	0/0/3/3
3	SF4	A	581	1	-	0/0/48/48	0/0/5/5
3	SF4	A	582	1	-	0/0/48/48	0/0/5/5

*Continued on next page...*

*Continued from previous page...*

Mol	Type	Chain	Res	Link	Chirals	Torsions	Rings
3	SF4	A	583	1	-	0/0/48/48	0/0/5/5
3	SF4	A	584	1	-	0/0/48/48	0/0/5/5
4	FES	A	585	1	-	0/0/4/4	0/0/1/1

All (26) bond length outliers are listed below:

Mol	Chain	Res	Type	Atoms	Z	Observed(Å)	Ideal(Å)
3	A	584	SF4	S3-FE4	-13.86	2.23	2.33
3	A	582	SF4	S1-FE4	-10.52	2.26	2.33
3	A	584	SF4	S4-FE3	-10.11	2.26	2.33
3	A	581	SF4	S2-FE4	-9.97	2.26	2.33
3	A	582	SF4	S2-FE1	-9.46	2.26	2.33
3	A	583	SF4	S1-FE4	-9.21	2.27	2.33
3	A	581	SF4	S1-FE2	-9.13	2.27	2.33
3	A	584	SF4	S2-FE1	-7.90	2.27	2.33
3	A	584	SF4	S1-FE4	-7.15	2.28	2.33
3	A	584	SF4	S2-FE4	7.01	2.38	2.33
3	A	584	SF4	S1-FE2	-6.70	2.28	2.33
3	A	583	SF4	S3-FE2	-6.11	2.29	2.33
3	A	581	SF4	S3-FE1	-5.56	2.29	2.33
3	A	582	SF4	S3-FE4	5.55	2.37	2.33
3	A	581	SF4	S2-FE1	-5.39	2.29	2.33
3	A	582	SF4	S3-FE1	4.99	2.36	2.33
3	A	582	SF4	S4-FE1	-4.86	2.30	2.33
3	A	581	SF4	S3-FE2	-4.38	2.30	2.33
3	A	584	SF4	S3-FE2	-4.31	2.30	2.33
3	A	583	SF4	S1-FE2	-4.30	2.30	2.33
3	A	584	SF4	S3-FE1	-4.16	2.30	2.33
3	A	583	SF4	S2-FE3	-3.89	2.30	2.33
3	A	582	SF4	S1-FE2	-3.19	2.31	2.33
3	A	582	SF4	S1-FE3	-2.62	2.31	2.33
3	A	581	SF4	S4-FE1	-2.48	2.31	2.33
3	A	581	SF4	S1-FE4	2.15	2.34	2.33

There are no bond angle outliers.

There are no chirality outliers.

There are no torsion outliers.

There are no ring outliers.

## 5.7 Other polymers ⓘ

There are no such residues in this entry.

## 5.8 Polymer linkage issues

There are no chain breaks in this entry.

## 6 Fit of model and data ⓘ

### 6.1 Protein, DNA and RNA chains ⓘ

EDS was not executed - this section will therefore be empty.

### 6.2 Non-standard residues in protein, DNA, RNA chains ⓘ

EDS was not executed - this section will therefore be empty.

### 6.3 Carbohydrates ⓘ

EDS was not executed - this section will therefore be empty.

### 6.4 Ligands ⓘ

EDS was not executed - this section will therefore be empty.

### 6.5 Other polymers ⓘ

EDS was not executed - this section will therefore be empty.