



# Full wwPDB X-ray Structure Validation Report

Feb 28, 2014 – 12:43 AM GMT

PDB ID : 1FP2  
Title : CRYSTAL STRUCTURE ANALYSIS OF ISOFLAVONE O-METHYLTRANSFERASE  
Authors : Zubieta, C.; Dixon, R.A.; Noel, J.P.  
Deposited on : 2000-08-29  
Resolution : 1.40 Å(reported)

This is a full wwPDB validation report for a publicly released PDB entry.  
We welcome your comments at [validation@mail.wwpdb.org](mailto:validation@mail.wwpdb.org)  
A user guide is available at <http://wwpdb.org/ValidationPDFNotes.html>

---

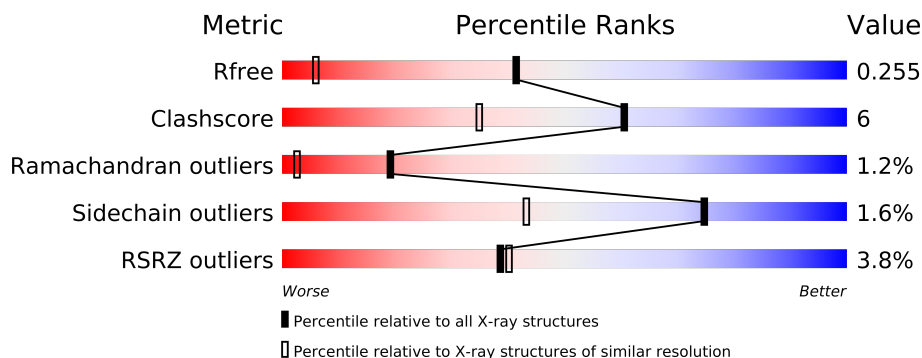
The following versions of software and data (see [references](#)) were used in the production of this report:

MolProbity : 4.02b-467  
Mogul : 1.15 2013  
Xtriage (Phenix) : dev-1323  
EDS : stable22639  
Percentile statistics : 21963  
Refmac : 5.8.0049  
CCP4 : 6.3.0 (Settle)  
Ideal geometry (proteins) : Engh & Huber (2001)  
Ideal geometry (DNA, RNA) : Parkinson et. al. (1996)  
Validation Pipeline (wwPDB-VP) : stable22683

# 1 Overall quality at a glance

The reported resolution of this entry is 1.40 Å.

Percentile scores (ranging between 0-100) for global validation metrics of the entry are shown in the following graphic. The table shows the number of entries on which the scores are based.



Metric	Whole archive (#Entries)	Similar resolution (#Entries, resolution range(Å))
$R_{free}$	66092	1097 (1.42-1.38)
Clashscore	79885	1246 (1.42-1.38)
Ramachandran outliers	78287	1206 (1.42-1.38)
Sidechain outliers	78261	1205 (1.42-1.38)
RSRZ outliers	66119	1097 (1.42-1.38)

The table below summarises the geometric issues observed across the polymeric chains and their fit to the electron density. The red, orange, yellow and green segments on the lower bar indicate the fraction of residues that contain outliers for  $\geq 3$ , 2, 1 and 0 types of geometric quality criteria. The upper red bar (where present) indicates the fraction of residues that have poor fit to the electron density.

Mol	Chain	Length	Quality of chain
1	A	352	

The following table lists non-polymeric compounds that are outliers for geometric or electron-density-fit criteria:

Mol	Type	Chain	Res	Geometry	Electron density
3	HMO	A	2000	X	X

## 2 Entry composition i

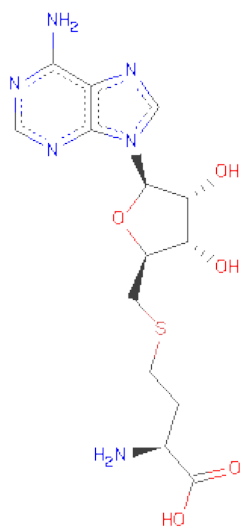
There are 4 unique types of molecules in this entry. The entry contains 3028 atoms, of which 0 are hydrogen and 0 are deuterium.

In the tables below, the ZeroOcc column contains the number of atoms modelled with zero occupancy, the AltConf column contains the number of residues with at least one atom in alternate conformation and the Trace column contains the number of residues modelled with at most 2 atoms.

- Molecule 1 is a protein called ISOFLAVONE O-METHYLTRANSFERASE.

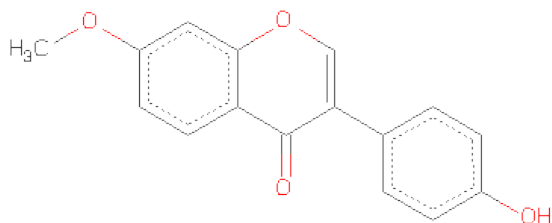
Mol	Chain	Residues	Atoms					ZeroOcc	AltConf	Trace
			Total	C	N	O	S			
1	A	345	2735	1757	448	513	17	0	0	0

- Molecule 2 is S-ADENOSYL-L-HOMOCYSTEINE (three-letter code: SAH) (formula:  $C_{14}H_{20}N_6O_5S$ ).



Mol	Chain	Residues	Atoms					ZeroOcc	AltConf
			Total	C	N	O	S		
2	A	1	26	14	6	5	1	0	0

- Molecule 3 is 4'-HYDROXY-7-METHOXYISOFLAVONE (three-letter code: HMO) (formula:  $C_{16}H_{12}O_4$ ).



Mol	Chain	Residues	Atoms			ZeroOcc	AltConf
3	A	1	Total	C	O	0	0
			20	16	4		

- Molecule 4 is water.

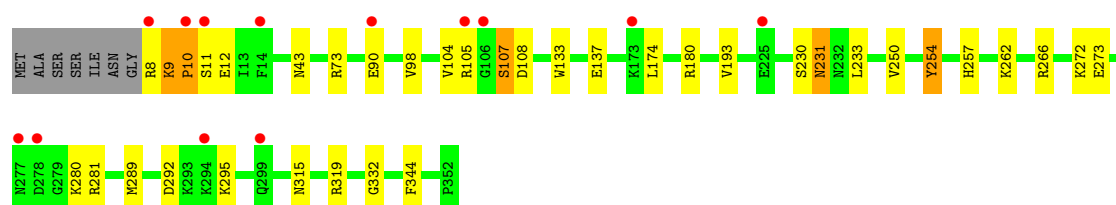
Mol	Chain	Residues	Atoms		ZeroOcc	AltConf
4	A	247	Total	O	0	0
			247	247		

### 3 Residue-property plots

These plots are drawn for all protein, RNA and DNA chains in the entry. The first graphic for a chain summarises the proportions of errors displayed in the second graphic. The second graphic shows the sequence view annotated by issues in geometry and electron density. Residues are color-coded according to the number of geometric quality criteria for which they contain at least one outlier: green = 0, yellow = 1, orange = 2 and red = 3 or more. A red dot above a residue indicates a poor fit to the electron density ( $RSRZ > 2$ ). Stretches of 2 or more consecutive residues without any outlier are shown as a green connector. Residues present in the sample, but not in the model, are shown in grey.

#### • Molecule 1: ISOFLAVONE O-METHYLTRANSFERASE

Chain A: 



## 4 Data and refinement statistics

Property	Value	Source
Space group	C 1 2 1	Depositor
Cell constants a, b, c, $\alpha$ , $\beta$ , $\gamma$	145.56Å 50.54Å 63.82Å 90.00° 106.69° 90.00°	Depositor
Resolution (Å)	69.71 – 1.40 69.71 – 1.39	Depositor EDS
% Data completeness (in resolution range)	94.4 (69.71-1.40) 93.6 (69.71-1.39)	Depositor EDS
$R_{merge}$	0.04	Depositor
$R_{sym}$	(Not available)	Depositor
$\langle I/\sigma(I) \rangle$ <sup>1</sup>	1.47 (at 1.39Å)	Xtriage
Refinement program	CNS 1.0	Depositor
R, $R_{free}$	0.217 , 0.233 0.243 , 0.255	Depositor DCC
$R_{free}$ test set	4156 reflections (5.03%)	DCC
Wilson B-factor (Å <sup>2</sup> )	15.0	Xtriage
Anisotropy	0.160	Xtriage
Bulk solvent $k_{sol}$ (e/Å <sup>3</sup> ), $B_{sol}$ (Å <sup>2</sup> )	0.39 , 36.1	EDS
Estimated twinning fraction	No twinning to report.	Xtriage
L-test for twinning	$\langle  L  \rangle = 0.50$ , $\langle L^2 \rangle = 0.33$	Xtriage
Outliers	0 of 83042 reflections	Xtriage
$F_o, F_c$ correlation	0.94	EDS
Total number of atoms	3028	wwPDB-VP
Average B, all atoms (Å <sup>2</sup> )	19.0	wwPDB-VP

Xtriage's analysis on translational NCS is as follows: *The largest off-origin peak in the Patterson function is 5.63% of the height of the origin peak. No significant pseudotranslation is detected.*

<sup>1</sup>Intensities estimated from amplitudes.

## 5 Model quality

### 5.1 Standard geometry

Bond lengths and bond angles in the following residue types are not validated in this section: SAH, HMO

The Z score for a bond length (or angle) is the number of standard deviations the observed value is removed from the expected value. A bond length (or angle) with  $|Z| > 5$  is considered an outlier worth inspection. RMSZ is the root-mean-square of all Z scores of the bond lengths (or angles).

Mol	Chain	Bond lengths		Bond angles	
		RMSZ	$\# Z  > 5$	RMSZ	$\# Z  > 5$
1	A	0.83	1/2789 (0.0%)	0.90	3/3770 (0.1%)

Chiral center outliers are detected by calculating the chiral volume of a chiral center and verifying if the center is modelled as a planar moiety or with the opposite hand. A planarity outlier is detected by checking planarity of atoms in a peptide group, atoms in a mainchain group or atoms of a sidechain that are expected to be planar.

Mol	Chain	#Chirality outliers	#Planarity outliers
1	A	0	1

All (1) bond length outliers are listed below:

Mol	Chain	Res	Type	Atoms	Z	Observed(Å)	Ideal(Å)
1	A	273	GLU	CD-OE1	5.27	1.31	1.25

All (3) bond angle outliers are listed below:

Mol	Chain	Res	Type	Atoms	Z	Observed(°)	Ideal(°)
1	A	319	ARG	NE-CZ-NH2	-6.97	116.81	120.30
1	A	73	ARG	NE-CZ-NH1	5.15	122.87	120.30
1	A	319	ARG	NE-CZ-NH1	5.10	122.85	120.30

There are no chirality outliers.

All (1) planarity outliers are listed below:

Mol	Chain	Res	Type	Group
1	A	254	TYR	Sidechain

## 5.2 Close contacts ⓘ

In the following table, the Non-H and H(model) columns list the number of non-hydrogen atoms and hydrogen atoms in the chain respectively. The H(added) column lists the number of hydrogens added by MolProbity. The Clashes column lists the number of clashes within the asymmetric unit, and the number in parentheses is this value normalized per 1000 atoms of the molecule in the chain. The Symm-Clashes column gives symmetry related clashes, in the same way as for the Clashes column.

Mol	Chain	Non-H	H(model)	H(added)	Clashes	Symm-Clashes
1	A	2735	0	2765	29	0
2	A	26	0	15	4	0
3	A	20	0	11	1	0
4	A	247	0	0	3	0
All	All	3028	0	2791	33	0

Clashscore is defined as the number of clashes calculated for the entry per 1000 atoms (including hydrogens) of the entry. The overall clashscore for this entry is 6.

All (33) close contacts within the same asymmetric unit are listed below.

Atom-1	Atom-2	Distance(Å)	Clash(Å)
2:A:1699:SAH:C3'	2:A:1699:SAH:C5'	2.30	1.08
2:A:1699:SAH:O4'	2:A:1699:SAH:C5'	2.07	1.03
2:A:1699:SAH:SD	2:A:1699:SAH:C4'	2.55	0.94
2:A:1699:SAH:C5'	2:A:1699:SAH:C4'	0.90	0.90
1:A:10:PRO:HD2	1:A:12:GLU:OE1	1.71	0.90
1:A:133:TRP:HE1	1:A:315:ASN:HD21	1.29	0.80
1:A:10:PRO:HG2	1:A:12:GLU:HG2	1.68	0.74
1:A:43:ASN:HD21	1:A:105:ARG:HG3	1.55	0.70
1:A:9:LYS:HB3	1:A:10:PRO:HD2	1.74	0.69
1:A:9:LYS:CB	1:A:10:PRO:HD2	2.25	0.66
1:A:262:LYS:HE2	1:A:266:ARG:NH2	2.12	0.65
1:A:104:VAL:O	1:A:107:SER:HB3	1.99	0.61
1:A:90:GLU:OE2	1:A:90:GLU:HA	2.00	0.61
1:A:231:ASN:HB3	4:A:2203:HOH:O	2.06	0.55
1:A:9:LYS:CB	1:A:10:PRO:CD	2.84	0.55
1:A:133:TRP:HE1	1:A:315:ASN:ND2	2.03	0.53
1:A:43:ASN:ND2	1:A:105:ARG:HG3	2.23	0.50
1:A:230:SER:O	1:A:231:ASN:C	2.51	0.49
1:A:233:LEU:C	1:A:233:LEU:HD23	2.33	0.49
1:A:230:SER:O	1:A:231:ASN:O	2.31	0.48
1:A:9:LYS:HB3	1:A:12:GLU:OE1	2.14	0.47
1:A:272:LYS:NZ	1:A:332:GLY:HA3	2.30	0.46
1:A:8:ARG:HD2	1:A:8:ARG:HA	1.59	0.46

*Continued on next page...*



*Continued from previous page...*

Atom-1	Atom-2	Distance(Å)	Clash(Å)
1:A:280:LYS:O	1:A:281:ARG:HD2	2.17	0.45
1:A:137:GLU:HG3	4:A:2096:HOH:O	2.16	0.45
1:A:193:VAL:CG1	1:A:250:VAL:HG22	2.48	0.43
1:A:193:VAL:HG13	1:A:250:VAL:HG22	2.01	0.43
1:A:254:TYR:O	3:A:2000:HMO:H201	2.19	0.43
1:A:292:ASP:OD1	1:A:295:LYS:HG2	2.19	0.43
1:A:9:LYS:HB2	1:A:12:GLU:HG3	2.01	0.42
1:A:98:VAL:HG23	4:A:2104:HOH:O	2.19	0.42
1:A:289:MET:HE2	1:A:344:PHE:HB3	2.03	0.41
1:A:9:LYS:HB3	1:A:10:PRO:CD	2.46	0.41

There are no symmetry-related clashes.

## 5.3 Torsion angles

### 5.3.1 Protein backbone ⓘ

In the following table, the Percentiles column shows the percent Ramachandran outliers of the chain as a percentile score with respect to all X-ray entries followed by that with respect to entries of similar resolution. The Analysed column shows the number of residues for which the backbone conformation was analysed, and the total number of residues.

Mol	Chain	Analysed	Favoured	Allowed	Outliers	Percentiles
1	A	343/352 (97%)	332 (97%)	7 (2%)	4 (1%)	19 2

All (4) Ramachandran outliers are listed below:

Mol	Chain	Res	Type
1	A	231	ASN
1	A	9	LYS
1	A	10	PRO
1	A	11	SER

### 5.3.2 Protein sidechains ⓘ

In the following table, the Percentiles column shows the percent sidechain outliers of the chain as a percentile score with respect to all X-ray entries followed by that with respect to entries of similar resolution. The Analysed column shows the number of residues for which the sidechain conformation was analysed, and the total number of residues.

Mol	Chain	Analysed	Rotameric	Outliers	Percentiles
1	A	307/312 (98%)	302 (98%)	5 (2%)	75 43

All (5) residues with a non-rotameric sidechain are listed below:

Mol	Chain	Res	Type
1	A	107	SER
1	A	108	ASP
1	A	174	LEU
1	A	180	ARG
1	A	257	HIS

Some sidechains can be flipped to improve hydrogen bonding and reduce clashes. All (9) such sidechains are listed below:

Mol	Chain	Res	Type
1	A	47	ASN
1	A	56	ASN
1	A	70	ASN
1	A	222	GLN
1	A	246	ASN
1	A	277	ASN
1	A	298	ASN
1	A	310	ASN
1	A	315	ASN

### 5.3.3 RNA ⓘ

There are no RNA chains in this entry.

## 5.4 Non-standard residues in protein, DNA, RNA chains ⓘ

There are no non-standard protein/DNA/RNA residues in this entry.

## 5.5 Carbohydrates ⓘ

There are no carbohydrates in this entry.

## 5.6 Ligand geometry ⓘ

2 ligands are modelled in this entry.

In the following table, the Counts columns list the number of bonds (or angles) for which Mogul statistics could be retrieved, the number of bonds (or angles) that are observed in the model and the number of bonds (or angles) that are defined in the chemical component dictionary. The Link column lists molecule types, if any, to which the group is linked. The Z score for a bond length (or angle) is the number of standard deviations the observed value is removed from the expected value. A bond length (or angle) with  $|Z| > 2$  is considered an outlier worth inspection. RMSZ is the root-mean-square of all Z scores of the bond lengths (or angles).

Mol	Type	Chain	Res	Link	Bond lengths			Bond angles		
					Counts	RMSZ	# $ Z  > 2$	Counts	RMSZ	# $ Z  > 2$
2	SAH	A	1699	-	28,28,28	4.79	11 (39%)	40,40,40	4.40	15 (37%)
3	HMO	A	2000	-	22,22,22	3.66	15 (68%)	29,31,31	1.97	10 (34%)

In the following table, the Chirals column lists the number of chiral outliers, the number of chiral centers analysed, the number of these observed in the model and the number defined in the chemical component dictionary. Similar counts are reported in the Torsion and Rings columns. '-' means no outliers of that kind were identified.

Mol	Type	Chain	Res	Link	Chirals	Torsions	Rings
2	SAH	A	1699	-	2/2/6/6	0/15/31/31	0/1/3/3
3	HMO	A	2000	-	-	0/6/6/6	0/1/3/3

All (26) bond length outliers are listed below:

Mol	Chain	Res	Type	Atoms	Z	Observed(Å)	Ideal(Å)
2	A	1699	SAH	C5'-C4'	-21.26	0.90	1.52
2	A	1699	SAH	C5'-SD	8.24	1.98	1.81
3	A	2000	HMO	C13-C14	6.84	1.53	1.38
3	A	2000	HMO	C6-C1	6.74	1.49	1.37
3	A	2000	HMO	C16-C11	5.98	1.52	1.39
2	A	1699	SAH	C2'-C1'	-5.10	1.46	1.53
3	A	2000	HMO	C7-C4	5.00	1.48	1.40
2	A	1699	SAH	C1'-N9	-4.66	1.34	1.48
3	A	2000	HMO	C4-C5	4.45	1.47	1.41
3	A	2000	HMO	O10-C9	4.43	1.43	1.34
3	A	2000	HMO	O17-C14	-4.43	1.25	1.37
3	A	2000	HMO	C7-C8	4.09	1.52	1.39
2	A	1699	SAH	C8-N7	-3.96	1.26	1.34
3	A	2000	HMO	C3-C2	3.86	1.44	1.36
3	A	2000	HMO	O18-C7	3.62	1.29	1.23
2	A	1699	SAH	O4'-C4'	3.08	1.52	1.45
2	A	1699	SAH	O4'-C1'	2.95	1.45	1.41
3	A	2000	HMO	C12-C11	2.95	1.45	1.39
2	A	1699	SAH	CB-CA	-2.93	1.46	1.54

*Continued on next page...*

*Continued from previous page...*

Mol	Chain	Res	Type	Atoms	Z	Observed(Å)	Ideal(Å)
2	A	1699	SAH	C8-N9	2.58	1.40	1.36
3	A	2000	HMO	C6-C5	2.51	1.43	1.37
3	A	2000	HMO	C2-C1	2.42	1.43	1.38
3	A	2000	HMO	C8-C11	-2.09	1.47	1.50
2	A	1699	SAH	C2-N3	2.08	1.36	1.32
2	A	1699	SAH	CA-C	-2.03	1.45	1.53
3	A	2000	HMO	O19-C20	-2.02	1.36	1.42

All (25) bond angle outliers are listed below:

Mol	Chain	Res	Type	Atoms	Z	Observed(°)	Ideal(°)
2	A	1699	SAH	O4'-C1'-N9	18.24	125.40	108.44
2	A	1699	SAH	C5'-C4'-C3'	9.20	138.82	114.98
2	A	1699	SAH	CG-CB-CA	9.08	128.43	113.22
2	A	1699	SAH	C3'-C2'-C1'	8.29	113.88	100.91
2	A	1699	SAH	C1'-N9-C4	6.60	138.04	126.64
2	A	1699	SAH	C2'-C1'-N9	5.79	128.13	113.27
2	A	1699	SAH	C8-N9-C1'	-5.70	115.16	126.38
3	A	2000	HMO	C3-C4-C5	5.20	122.66	116.30
2	A	1699	SAH	N3-C2-N1	-4.74	124.75	128.71
3	A	2000	HMO	C6-C5-C4	-4.26	117.89	123.10
2	A	1699	SAH	C4-C5-N7	3.33	112.37	109.52
2	A	1699	SAH	C5-C4-N9	-2.92	102.95	107.16
3	A	2000	HMO	O10-C5-C4	2.88	124.36	121.36
2	A	1699	SAH	N3-C4-N9	2.81	130.51	125.43
2	A	1699	SAH	C2-N1-C6	2.70	123.65	118.77
3	A	2000	HMO	C7-C8-C11	-2.61	118.19	121.00
3	A	2000	HMO	C2-C3-C4	-2.58	117.35	121.42
3	A	2000	HMO	C1-C6-C5	2.49	121.28	118.83
3	A	2000	HMO	C3-C2-C1	2.34	123.02	120.14
3	A	2000	HMO	C3-C4-C7	-2.33	118.32	122.19
2	A	1699	SAH	C5'-SD-CG	-2.28	95.61	102.42
2	A	1699	SAH	O4'-C4'-C5'	2.28	114.99	108.91
2	A	1699	SAH	C4'-C5'-SD	2.25	120.47	113.53
3	A	2000	HMO	C2-C1-C6	-2.15	117.78	120.84
3	A	2000	HMO	C9-C8-C11	2.14	122.01	118.07

All (2) chirality outliers are listed below:

Mol	Chain	Res	Type	Atom
2	A	1699	SAH	C4'
2	A	1699	SAH	C1'

There are no torsion outliers.

There are no ring outliers.

## 5.7 Other polymers ⓘ

There are no such residues in this entry.

## 5.8 Polymer linkage issues

There are no chain breaks in this entry.

## 6 Fit of model and data ⓘ

### 6.1 Protein, DNA and RNA chains ⓘ

In the following table, the column labelled ‘#RSRZ> 2’ contains the number (and percentage) of RSRZ outliers, followed by percent RSRZ outliers for the chain as percentile scores relative to all X-ray entries and entries of similar resolution. The OWAB column contains the minimum, median, 95<sup>th</sup> percentile and maximum values of the occupancy-weighted average B-factor per residue. The column labelled ‘Q< 0.9’ lists the number of (and percentage) of residues with an average occupancy less than 0.9.

Mol	Chain	Analysed	<RSRZ>	#RSRZ>2		OWAB(Å <sup>2</sup> )	Q<0.9
1	A	345/352 (98%)	0.37	13 (3%)	38 40	10, 17, 35, 43	0

All (13) RSRZ outliers are listed below:

Mol	Chain	Res	Type	RSRZ
1	A	90	GLU	4.6
1	A	10	PRO	4.4
1	A	106	GLY	4.1
1	A	294	LYS	4.0
1	A	11	SER	3.3
1	A	277	ASN	2.8
1	A	14	PHE	2.7
1	A	299	GLN	2.4
1	A	225	GLU	2.4
1	A	105	ARG	2.3
1	A	8	ARG	2.1
1	A	278	ASP	2.1
1	A	173	LYS	2.1

### 6.2 Non-standard residues in protein, DNA, RNA chains ⓘ

There are no non-standard protein/DNA/RNA residues in this entry.

### 6.3 Carbohydrates ⓘ

There are no carbohydrates in this entry.

## 6.4 Ligands

In the following table, the Atoms column lists the number of modelled atoms in the group and the number defined in the chemical component dictionary. LLDF column lists the quality of electron density of the group with respect to its neighbouring residues in protein, DNA or RNA chains. The B-factors column lists the minimum, median, 95<sup>th</sup> percentile and maximum values of B factors of atoms in the group. The column labelled 'Q< 0.9' lists the number of atoms with occupancy less than 0.9.

Mol	Type	Chain	Res	Atoms	RSR	LLDF	B-factors(Å <sup>2</sup> )	Q<0.9
3	HMO	A	2000	20/20	0.16	5.31	20,23,24,25	0
2	SAH	A	1699	26/26	0.10	0.55	11,13,19,22	0

## 6.5 Other polymers

There are no such residues in this entry.