



Full wwPDB X-ray Structure Validation Report

Feb 27, 2014 – 12:58 AM GMT

PDB ID : 1FPE

Title : STRUCTURAL ASPECTS OF THE ALLOSTERIC INHIBITION OF FRUCTOSE-1,6-BISPHOSPHATASE BY AMP: THE BINDING OF BOTH THE SUBSTRATE ANALOGUE 2,5-ANHYDRO-D-GLUCITOL-1,6-BISPHOSPHATE AND CATALYTIC METAL IONS MONITORED BY X-RAY CRYSTALLOGRAPHY

Authors : Villeret, V.; Huang, S.; Zhang, Y.; Lipscomb, W.N.

Deposited on : 1994-12-15

Resolution : 2.20 Å (reported)

This is a full wwPDB validation report for a publicly released PDB entry.

We welcome your comments at validation@mail.wwpdb.org

A user guide is available at <http://wwpdb.org/ValidationPDFNotes.html>

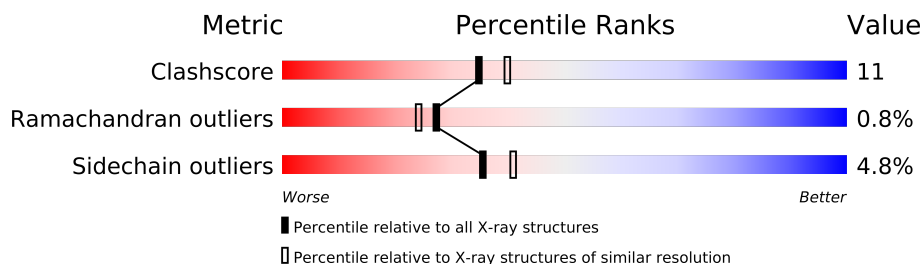
The following versions of software and data (see [references](#)) were used in the production of this report:

MolProbity	:	4.02b-467
Mogul	:	1.15 2013
Xtriage (Phenix)	:	NOT EXECUTED
EDS	:	NOT EXECUTED
Percentile statistics	:	21963
Ideal geometry (proteins)	:	Engh & Huber (2001)
Ideal geometry (DNA, RNA)	:	Parkinson et. al. (1996)
Validation Pipeline (wwPDB-VP)	:	stable22683

1 Overall quality at a glance

The reported resolution of this entry is 2.20 Å.

Percentile scores (ranging between 0-100) for global validation metrics of the entry are shown in the following graphic. The table shows the number of entries on which the scores are based.



Metric	Whole archive (#Entries)	Similar resolution (#Entries, resolution range(Å))
Clashscore	79885	3751 (2.20-2.20)
Ramachandran outliers	78287	3681 (2.20-2.20)
Sidechain outliers	78261	3682 (2.20-2.20)

The table below summarises the geometric issues observed across the polymeric chains and their fit to the electron density. The red, orange, yellow and green segments on the lower bar indicate the fraction of residues that contain outliers for ≥ 3 , 2, 1 and 0 types of geometric quality criteria. The upper red bar (where present) indicates the fraction of residues that have poor fit to the electron density.

Note EDS was not executed.

Mol	Chain	Length	Quality of chain
1	A	335	
1	B	335	

2 Entry composition

There are 5 unique types of molecules in this entry. The entry contains 6503 atoms, of which 1406 are hydrogens and 0 are deuterium.

In the tables below, the ZeroOcc column contains the number of atoms modelled with zero occupancy, the AltConf column contains the number of residues with at least one atom in alternate conformation and the Trace column contains the number of residues modelled with at most 2 atoms.

- Molecule 1 is a protein called FRUCTOSE 1,6-BISPHOSPHATASE.

Mol	Chain	Residues	Atoms						ZeroOcc	AltConf	Trace
1	A	317	Total	C	H	N	O	S	0	0	0
			2962	1546	536	409	456	15			
1	B	317	Total	C	H	N	O	S	0	0	0
			2962	1546	536	409	456	15			

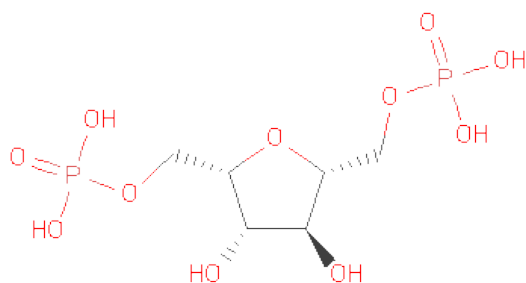
There are 6 discrepancies between the modelled and reference sequences:

Chain	Residue	Modelled	Actual	Comment	Reference
A	20	GLN	GLU	CONFLICT	UNP P00636
A	96	THR	SER	CONFLICT	UNP P00636
A	199	ASN	ASP	CONFLICT	UNP P00636
B	20	GLN	GLU	CONFLICT	UNP P00636
B	96	THR	SER	CONFLICT	UNP P00636
B	199	ASN	ASP	CONFLICT	UNP P00636

- Molecule 2 is MANGANESE (II) ION (three-letter code: MN) (formula: Mn).

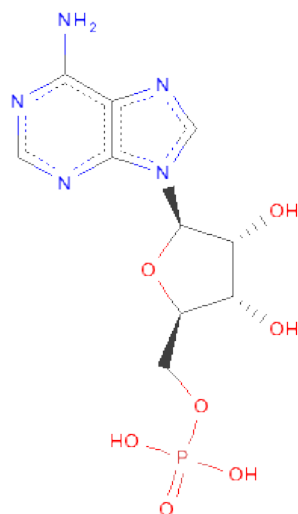
Mol	Chain	Residues	Atoms		ZeroOcc	AltConf
2	B	2	Total	Mn	0	0
			2	2		
2	A	2	Total	Mn	0	0
			2	2		

- Molecule 3 is 2,5-ANHYDROGLUCITOL-1,6-BIPHOSPHATE (three-letter code: AHG) (formula: C₆H₁₄O₁₁P₂).



Mol	Chain	Residues	Atoms					ZeroOcc	AltConf
3	A	1	Total	C	H	O	P	0	0
			29	6	10	11	2		
3	B	1	Total	C	H	O	P	0	0
			29	6	10	11	2		

- Molecule 4 is ADENOSINE MONOPHOSPHATE (three-letter code: AMP) (formula: $C_{10}H_{14}N_5O_7P$).



Mol	Chain	Residues	Atoms					ZeroOcc	AltConf
4	A	1	Total	C	N	O	P	0	0
			23	10	5	7	1		
4	B	1	Total	C	N	O	P	0	0
			23	10	5	7	1		

- Molecule 5 is water.

Mol	Chain	Residues	Atoms			ZeroOcc	AltConf
5	A	82	Total 246	H 164	O 82	0	0
5	B	75	Total 225	H 150	O 75	0	0

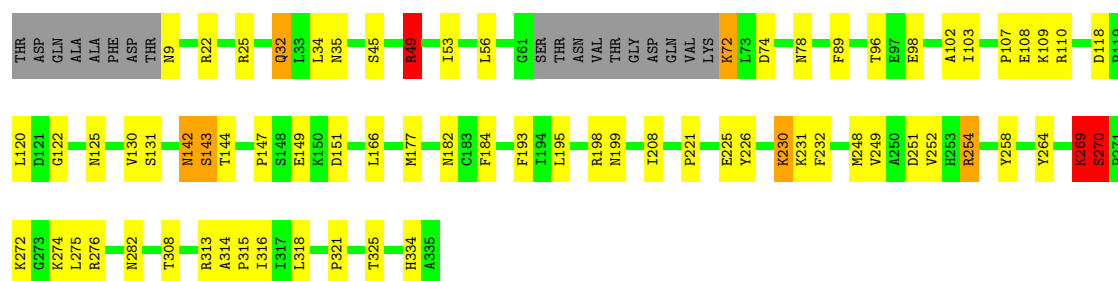
3 Residue-property plots

These plots are drawn for all protein, RNA and DNA chains in the entry. The first graphic for a chain summarises the proportions of errors displayed in the second graphic. The second graphic shows the sequence view annotated by issues in geometry and electron density. Residues are color-coded according to the number of geometric quality criteria for which they contain at least one outlier: green = 0, yellow = 1, orange = 2 and red = 3 or more. A red dot above a residue indicates a poor fit to the electron density ($RSRZ > 2$). Stretches of 2 or more consecutive residues without any outlier are shown as a green connector. Residues present in the sample, but not in the model, are shown in grey.

Note EDS was not executed.

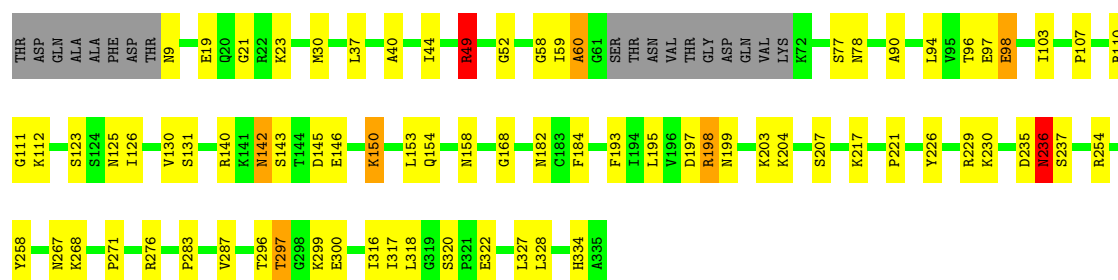
• Molecule 1: FRUCTOSE 1,6-BISPHOSPHATASE

Chain A: 



• Molecule 1: FRUCTOSE 1,6-BISPHOSPHATASE

Chain B: 



4 Data and refinement statistics

Xtriage (Phenix) and EDS were not executed - this section will therefore be incomplete.

Property	Value	Source
Space group	P 21 21 2	Depositor
Cell constants a, b, c, α , β , γ	61.00Å 166.50Å 79.90Å 90.00° 90.00° 90.00°	Depositor
Resolution (Å)	8.00 – 2.20	Depositor
% Data completeness (in resolution range)	(Not available) (8.00-2.20)	Depositor
R_{merge}	(Not available)	Depositor
R_{sym}	(Not available)	Depositor
Refinement program	X-PLOR	Depositor
R, R_{free}	0.180 , (Not available)	Depositor
Estimated twinning fraction	No twinning to report.	Xtriage
Total number of atoms	6503	wwPDB-VP
Average B, all atoms (Å ²)	24.0	wwPDB-VP

5 Model quality i

5.1 Standard geometry i

Bond lengths and bond angles in the following residue types are not validated in this section: AMP, MN, AHG

The Z score for a bond length (or angle) is the number of standard deviations the observed value is removed from the expected value. A bond length (or angle) with $|Z| > 5$ is considered an outlier worth inspection. RMSZ is the root-mean-square of all Z scores of the bond lengths (or angles).

Mol	Chain	Bond lengths		Bond angles	
		RMSZ	$\# Z > 5$	RMSZ	$\# Z > 5$
1	A	0.80	3/2467 (0.1%)	0.76	3/3335 (0.1%)
1	B	0.80	3/2467 (0.1%)	0.79	2/3335 (0.1%)
All	All	0.80	6/4934 (0.1%)	0.77	5/6670 (0.1%)

All (6) bond length outliers are listed below:

Mol	Chain	Res	Type	Atoms	Z	Observed(Å)	Ideal(Å)
1	A	131	SER	CA-CB	-9.55	1.38	1.52
1	B	131	SER	CA-CB	-7.19	1.42	1.52
1	B	77	SER	CA-CB	-7.13	1.42	1.52
1	A	269	LYS	CA-CB	6.37	1.68	1.53
1	B	207	SER	CA-CB	-5.89	1.44	1.52
1	A	270	SER	CA-CB	5.80	1.61	1.52

All (5) bond angle outliers are listed below:

Mol	Chain	Res	Type	Atoms	Z	Observed(°)	Ideal(°)
1	A	254	ARG	NE-CZ-NH2	-6.32	117.14	120.30
1	A	49	ARG	NE-CZ-NH2	-5.89	117.35	120.30
1	B	49	ARG	NE-CZ-NH1	5.45	123.02	120.30
1	B	49	ARG	NE-CZ-NH2	-5.10	117.75	120.30
1	A	118	ASP	N-CA-C	-5.09	97.25	111.00

There are no chirality outliers.

There are no planarity outliers.

5.2 Close contacts ⓘ

In the following table, the Non-H and H(model) columns list the number of non-hydrogen atoms and hydrogen atoms in the chain respectively. The H(added) column lists the number of hydrogens added by MolProbity. The Clashes column lists the number of clashes within the asymmetric unit, and the number in parentheses is this value normalized per 1000 atoms of the molecule in the chain. The Symm-Clashes column gives symmetry related clashes, in the same way as for the Clashes column.

Mol	Chain	Non-H	H(model)	H(added)	Clashes	Symm-Clashes
1	A	2426	536	1950	52	0
1	B	2426	536	1950	54	0
2	A	2	0	0	0	0
2	B	2	0	0	0	0
3	A	19	10	0	0	0
3	B	19	10	0	0	0
4	A	23	0	10	1	0
4	B	23	0	10	2	0
5	A	82	164	0	2	0
5	B	75	150	0	9	0
All	All	5097	1406	3920	106	0

Clashscore is defined as the number of clashes calculated for the entry per 1000 atoms (including hydrogens) of the entry. The overall clashscore for this entry is 11.

All (106) close contacts within the same asymmetric unit are listed below.

Atom-1	Atom-2	Distance(Å)	Clash(Å)
1:B:125:ASN:HB3	1:B:130:VAL:HB	1.50	0.90
1:A:96:THR:HG22	1:A:98:GLU:H	1.37	0.90
1:A:78:ASN:OD1	1:A:96:THR:HG21	1.83	0.79
1:B:203:LYS:NZ	5:B:397:HOH:O	2.17	0.76
1:A:22:ARG:HH11	1:A:22:ARG:HG2	1.52	0.75
1:B:96:THR:HG22	1:B:98:GLU:H	1.53	0.73
1:A:142:ASN:O	1:A:143:SER:HB3	1.88	0.73
1:A:125:ASN:HB3	1:A:130:VAL:HB	1.71	0.72
1:B:78:ASN:OD1	1:B:96:THR:HG21	1.91	0.70
1:A:182:ASN:HD22	1:A:198:ARG:HA	1.57	0.68
1:A:254:ARG:HD2	5:A:349:HOH:O	1.97	0.65
1:A:321:PRO:O	1:A:325:THR:HG23	1.97	0.64
1:B:107:PRO:HA	1:B:110:ARG:HG3	1.80	0.64
1:B:316:ILE:HD11	1:B:318:LEU:HD23	1.81	0.62
1:B:317:ILE:HD13	1:B:327:LEU:HD21	1.82	0.62
1:B:258:TYR:CD1	5:B:397:HOH:O	2.54	0.60
1:B:317:ILE:HD13	1:B:327:LEU:CD2	2.32	0.60

Continued on next page...

Continued from previous page...

Atom-1	Atom-2	Distance(Å)	Clash(Å)
1:A:89:PHE:CD2	1:A:109:LYS:HA	2.37	0.59
1:B:235:ASP:O	1:B:237:SER:N	2.37	0.58
1:A:182:ASN:ND2	1:A:198:ARG:HA	2.20	0.57
1:A:251:ASP:OD1	1:A:254:ARG:NH2	2.37	0.57
1:A:32:GLN:HE22	1:A:32:GLN:HA	1.70	0.56
1:B:58:GLY:C	1:B:60:ALA:H	2.08	0.56
4:A:339:AMP:H8	4:A:339:AMP:O5'	1.89	0.55
1:B:154:GLN:HE22	1:B:158:ASN:HD22	1.55	0.54
1:A:184:PHE:HB3	1:A:193:PHE:HB3	1.88	0.54
1:A:182:ASN:ND2	1:A:199:ASN:H	2.05	0.54
1:A:103:ILE:HD12	1:A:103:ILE:N	2.23	0.54
1:B:142:ASN:ND2	1:B:143:SER:H	2.06	0.53
1:A:221:PRO:HB2	1:A:334:HIS:CD2	2.43	0.53
1:B:226:TYR:CE1	1:B:230:LYS:HE3	2.44	0.53
1:B:184:PHE:HB3	1:B:193:PHE:HB3	1.91	0.53
1:B:297:THR:HG22	1:B:299:LYS:H	1.72	0.53
1:A:226:TYR:CZ	1:A:230:LYS:HD3	2.44	0.52
1:B:317:ILE:HG21	1:B:327:LEU:HD23	1.91	0.52
1:A:225:GLU:OE1	1:A:334:HIS:HE1	1.93	0.52
1:B:254:ARG:HH21	5:B:363:HOH:H1	1.58	0.52
1:A:32:GLN:HA	1:A:32:GLN:NE2	2.26	0.51
5:A:365:HOH:O	1:B:52:GLY:HA2	2.11	0.51
1:A:22:ARG:NH1	1:A:22:ARG:HG2	2.24	0.51
1:B:203:LYS:HZ3	5:B:397:HOH:H1	1.58	0.50
1:B:203:LYS:HZ2	5:B:397:HOH:H2	1.60	0.49
1:B:276:ARG:NH1	5:B:399:HOH:H2	2.10	0.49
1:B:140:ARG:HD3	5:B:414:HOH:H1	1.75	0.49
1:B:21:GLY:HA2	4:B:339:AMP:C5	2.48	0.49
1:A:184:PHE:CE2	1:A:195:LEU:HB2	2.48	0.49
1:A:274:LYS:O	1:A:313:ARG:NH1	2.45	0.48
1:B:150:LYS:HD3	1:B:153:LEU:HD12	1.94	0.48
1:B:296:THR:HG21	1:B:328:LEU:HD21	1.95	0.48
1:A:72:LYS:HB3	1:A:72:LYS:NZ	2.28	0.48
1:B:182:ASN:HD22	1:B:198:ARG:HA	1.78	0.48
1:A:142:ASN:O	1:A:142:ASN:ND2	2.47	0.48
1:B:58:GLY:C	1:B:60:ALA:N	2.67	0.48
1:A:270:SER:OG	1:A:272:LYS:HB2	2.14	0.47
1:A:147:PRO:HA	1:A:151:ASP:OD2	2.14	0.47
1:A:231:LYS:HZ2	5:B:359:HOH:H2	1.61	0.47
1:B:40:ALA:O	1:B:44:ILE:HG13	2.15	0.47
1:A:248:MET:CE	1:A:275:LEU:HD13	2.46	0.46
1:B:112:LYS:NZ	4:B:339:AMP:O2P	2.50	0.45

Continued on next page...

Continued from previous page...

Atom-1	Atom-2	Distance(Å)	Clash(Å)
1:A:9:ASN:ND2	1:A:9:ASN:O	2.49	0.45
1:B:142:ASN:HD22	1:B:143:SER:H	1.62	0.45
1:B:19:GLU:HG2	1:B:23:LYS:HE3	1.97	0.45
1:A:269:LYS:HD2	1:A:274:LYS:HB2	1.98	0.45
1:A:208:ILE:HD12	1:A:258:TYR:CD2	2.52	0.45
1:B:90:ALA:HA	1:B:111:GLY:HA3	1.99	0.45
1:B:107:PRO:HG3	1:B:110:ARG:CZ	2.47	0.45
1:A:232:PHE:CE1	1:B:217:LYS:HA	2.52	0.45
1:B:221:PRO:HB2	1:B:334:HIS:CD2	2.52	0.44
1:B:204:LYS:HE2	1:B:322:GLU:OE2	2.17	0.44
1:B:203:LYS:NZ	5:B:397:HOH:H1	2.12	0.44
1:A:252:VAL:HG22	1:A:318:LEU:HD11	1.99	0.44
1:B:96:THR:HG22	1:B:97:GLU:N	2.32	0.44
1:B:94:LEU:HB2	1:B:103:ILE:HB	2.00	0.43
1:A:142:ASN:O	1:A:143:SER:CB	2.60	0.43
1:B:142:ASN:HD22	1:B:143:SER:N	2.17	0.43
1:A:269:LYS:O	1:A:270:SER:O	2.35	0.43
1:A:45:SER:O	1:A:49:ARG:HG2	2.18	0.43
1:B:123:SER:O	1:B:126:ILE:HG13	2.18	0.43
1:B:283:PRO:O	1:B:287:VAL:HG23	2.19	0.43
1:B:204:LYS:O	1:B:320:SER:HB3	2.18	0.43
1:B:236:ASN:HA	1:B:236:ASN:HD22	1.68	0.43
1:A:102:ALA:CB	1:A:149:GLU:HG3	2.49	0.42
1:A:282:ASN:HD22	1:A:282:ASN:HA	1.71	0.42
1:A:102:ALA:HB3	1:A:149:GLU:HG3	2.01	0.42
1:A:316:ILE:CD1	1:A:318:LEU:HD23	2.50	0.42
1:A:34:LEU:HD11	1:A:177:MET:HE1	2.00	0.42
1:B:9:ASN:OD1	1:B:9:ASN:N	2.52	0.42
1:A:53:ILE:HD12	1:A:56:LEU:HD12	2.02	0.42
1:A:314:ALA:HA	1:A:315:PRO:HD3	1.91	0.42
1:B:145:ASP:CG	1:B:146:GLU:H	2.24	0.41
1:B:297:THR:HB	1:B:300:GLU:O	2.20	0.41
1:B:195:LEU:HD21	1:B:198:ARG:HG3	2.02	0.41
1:A:166:LEU:HD13	1:A:249:VAL:HG12	2.02	0.41
1:A:107:PRO:HA	1:A:110:ARG:HB2	2.02	0.41
1:A:269:LYS:C	1:A:269:LYS:HD3	2.41	0.41
1:A:122:GLY:O	1:A:125:ASN:HB2	2.21	0.41
1:B:267:ASN:OD1	1:B:268:LYS:N	2.54	0.41
1:A:49:ARG:HG2	1:A:49:ARG:H	1.68	0.41
1:A:120:LEU:HD12	1:A:120:LEU:HA	1.81	0.41
1:A:34:LEU:HD11	1:A:177:MET:CE	2.51	0.41
1:B:49:ARG:NH2	1:B:168:GLY:O	2.51	0.41

Continued on next page...

Continued from previous page...

Atom-1	Atom-2	Distance(Å)	Clash(Å)
1:A:35:ASN:HA	1:A:35:ASN:HD22	1.76	0.40
1:A:270:SER:C	1:A:272:LYS:N	2.75	0.40
1:B:316:ILE:CD1	1:B:318:LEU:HD23	2.50	0.40
1:B:142:ASN:H	1:B:142:ASN:ND2	2.19	0.40
1:B:268:LYS:O	1:B:271:PRO:HD3	2.22	0.40

There are no symmetry-related clashes.

5.3 Torsion angles

5.3.1 Protein backbone ⓘ

In the following table, the Percentiles column shows the percent Ramachandran outliers of the chain as a percentile score with respect to all X-ray entries followed by that with respect to entries of similar resolution. The Analysed column shows the number of residues for which the backbone conformation was analysed, and the total number of residues.

Mol	Chain	Analysed	Favoured	Allowed	Outliers	Percentiles	
1	A	313/335 (93%)	302 (96%)	9 (3%)	2 (1%)	33	32
1	B	313/335 (93%)	298 (95%)	12 (4%)	3 (1%)	22	18
All	All	626/670 (93%)	600 (96%)	21 (3%)	5 (1%)	27	24

All (5) Ramachandran outliers are listed below:

Mol	Chain	Res	Type
1	A	143	SER
1	A	270	SER
1	B	60	ALA
1	B	236	ASN
1	B	59	ILE

5.3.2 Protein sidechains ⓘ

In the following table, the Percentiles column shows the percent sidechain outliers of the chain as a percentile score with respect to all X-ray entries followed by that with respect to entries of similar resolution. The Analysed column shows the number of residues for which the sidechain conformation was analysed, and the total number of residues.

Continued on next page...

Continued from previous page...

Mol	Chain	Analysed	Rotameric	Outliers	Percentiles	
1	A	263/278 (95%)	250 (95%)	13 (5%)	35	40
1	B	263/278 (95%)	251 (95%)	12 (5%)	37	43
All	All	526/556 (95%)	501 (95%)	25 (5%)	35	41

All (25) residues with a non-rotameric sidechain are listed below:

Mol	Chain	Res	Type
1	A	25	ARG
1	A	32	GLN
1	A	49	ARG
1	A	72	LYS
1	A	74	ASP
1	A	108	GLU
1	A	142	ASN
1	A	144	THR
1	A	230	LYS
1	A	264	TYR
1	A	269	LYS
1	A	276	ARG
1	A	308	THR
1	B	30	MET
1	B	37	LEU
1	B	49	ARG
1	B	98	GLU
1	B	142	ASN
1	B	150	LYS
1	B	197	ASP
1	B	198	ARG
1	B	199	ASN
1	B	229	ARG
1	B	236	ASN
1	B	297	THR

Some sidechains can be flipped to improve hydrogen bonding and reduce clashes. All (14) such sidechains are listed below:

Mol	Chain	Res	Type
1	A	32	GLN
1	A	35	ASN

Continued on next page...

Continued from previous page...

Mol	Chain	Res	Type
1	A	154	GLN
1	A	182	ASN
1	A	282	ASN
1	A	334	HIS
1	B	9	ASN
1	B	35	ASN
1	B	101	ASN
1	B	142	ASN
1	B	154	GLN
1	B	228	GLN
1	B	236	ASN
1	B	334	HIS

5.3.3 RNA ⓘ

There are no RNA chains in this entry.

5.4 Non-standard residues in protein, DNA, RNA chains ⓘ

There are no non-standard protein/DNA/RNA residues in this entry.

5.5 Carbohydrates ⓘ

There are no carbohydrates in this entry.

5.6 Ligand geometry ⓘ

Of 8 ligands modelled in this entry, 4 are monoatomic - leaving 4 for Mogul analysis.

In the following table, the Counts columns list the number of bonds (or angles) for which Mogul statistics could be retrieved, the number of bonds (or angles) that are observed in the model and the number of bonds (or angles) that are defined in the chemical component dictionary. The Link column lists molecule types, if any, to which the group is linked. The Z score for a bond length (or angle) is the number of standard deviations the observed value is removed from the expected value. A bond length (or angle) with $|Z| > 2$ is considered an outlier worth inspection. RMSZ is the root-mean-square of all Z scores of the bond lengths (or angles).

Mol	Type	Chain	Res	Link	Bond lengths			Bond angles		
					Counts	RMSZ	# $ Z > 2$	Counts	RMSZ	# $ Z > 2$
3	AHG	A	338	2	19,19,19	1.28	2 (10%)	29,29,29	1.24	5 (17%)

Mol	Type	Chain	Res	Link	Bond lengths			Bond angles		
					Counts	RMSZ	# Z > 2	Counts	RMSZ	# Z > 2
4	AMP	A	339	-	25,25,25	2.05	6 (24%)	38,38,38	2.62	11 (28%)
3	AHG	B	338	2	19,19,19	1.28	3 (15%)	29,29,29	1.70	7 (24%)
4	AMP	B	339	-	25,25,25	2.21	5 (20%)	38,38,38	2.43	11 (28%)

In the following table, the Chirals column lists the number of chiral outliers, the number of chiral centers analysed, the number of these observed in the model and the number defined in the chemical component dictionary. Similar counts are reported in the Torsion and Rings columns. '-' means no outliers of that kind were identified.

Mol	Type	Chain	Res	Link	Chirals	Torsions	Rings
3	AHG	A	338	2	-	0/12/28/28	0/1/1/1
4	AMP	A	339	-	-	0/10/26/26	0/1/3/3
3	AHG	B	338	2	-	0/12/28/28	0/1/1/1
4	AMP	B	339	-	-	0/10/26/26	0/1/3/3

All (16) bond length outliers are listed below:

Mol	Chain	Res	Type	Atoms	Z	Observed(Å)	Ideal(Å)
4	B	339	AMP	O3'-C3'	-7.25	1.25	1.43
4	A	339	AMP	O3'-C3'	-7.23	1.25	1.43
4	B	339	AMP	O2'-C2'	-5.58	1.29	1.43
4	A	339	AMP	O2'-C2'	-4.12	1.33	1.43
4	A	339	AMP	P-O2P	-3.43	1.42	1.54
3	A	338	AHG	P2-O6P	-3.16	1.43	1.54
3	B	338	AHG	O3-C3	3.01	1.50	1.43
3	B	338	AHG	C4-C3	2.82	1.61	1.53
4	B	339	AMP	P-O2P	-2.67	1.44	1.54
4	A	339	AMP	C2-N3	2.48	1.37	1.32
4	B	339	AMP	C4-N9	2.37	1.41	1.37
3	A	338	AHG	O5-C5	-2.23	1.39	1.45
4	B	339	AMP	C2'-C1'	2.17	1.56	1.53
4	A	339	AMP	C2'-C1'	2.12	1.56	1.53
4	A	339	AMP	P-O5'	-2.06	1.53	1.60
3	B	338	AHG	P2-O6P	-2.01	1.47	1.54

All (34) bond angle outliers are listed below:

Mol	Chain	Res	Type	Atoms	Z	Observed(°)	Ideal(°)
4	A	339	AMP	N3-C2-N1	-11.11	119.42	128.71
4	B	339	AMP	N3-C2-N1	-9.91	120.43	128.71
3	B	338	AHG	O4-C4-C3	4.64	126.93	111.83

Continued on next page...

Continued from previous page...

Mol	Chain	Res	Type	Atoms	Z	Observed(°)	Ideal(°)
4	B	339	AMP	O4'-C1'-N9	4.46	112.59	108.44
4	A	339	AMP	C4-C5-N7	-4.28	105.86	109.52
4	A	339	AMP	O2'-C2'-C1'	4.21	123.95	111.23
4	A	339	AMP	C3'-C2'-C1'	-4.19	94.35	100.91
4	A	339	AMP	C4'-O4'-C1'	-3.92	105.49	109.75
4	B	339	AMP	O2'-C2'-C3'	-3.91	99.10	111.83
4	B	339	AMP	O2P-P-O5'	3.85	117.28	106.65
3	B	338	AHG	O3-C3-C4	-3.81	99.45	111.83
4	A	339	AMP	C2-N1-C6	3.48	125.06	118.77
4	B	339	AMP	C2'-C1'-N9	3.41	122.03	113.27
3	A	338	AHG	O4-C4-C3	3.33	122.67	111.83
4	B	339	AMP	N3-C4-N9	3.02	130.88	125.43
4	A	339	AMP	O3'-C3'-C4'	2.91	119.67	111.08
4	A	339	AMP	O2'-C2'-C3'	-2.84	102.59	111.83
3	B	338	AHG	O5-C2-C1	-2.81	99.34	109.36
4	B	339	AMP	O3'-C3'-C4'	2.69	119.00	111.08
3	B	338	AHG	O1-C1-C2	-2.56	99.53	108.94
3	B	338	AHG	O5-C5-C4	-2.48	100.14	105.17
4	A	339	AMP	O2P-P-O5'	2.48	113.48	106.65
4	A	339	AMP	C2'-C1'-N9	2.38	119.37	113.27
3	A	338	AHG	O6-P2-O4P	2.30	113.45	106.71
4	B	339	AMP	N7-C8-N9	-2.23	108.04	114.36
3	B	338	AHG	O3-C3-C2	2.22	117.63	111.08
4	B	339	AMP	C4-C5-N7	-2.20	107.64	109.52
4	A	339	AMP	O4'-C1'-C2'	2.17	110.10	106.77
4	B	339	AMP	C8-N7-C5	2.11	110.13	103.58
3	A	338	AHG	O3-C3-C4	-2.11	104.97	111.83
3	A	338	AHG	O6P-P2-O5P	2.10	115.79	107.61
4	B	339	AMP	C2-N1-C6	2.03	122.44	118.77
3	A	338	AHG	O1-P1-O1P	2.02	112.62	106.71
3	B	338	AHG	O4-C4-C5	-2.01	105.17	111.08

There are no chirality outliers.

There are no torsion outliers.

There are no ring outliers.

5.7 Other polymers ⓘ

There are no such residues in this entry.

5.8 Polymer linkage issues

There are no chain breaks in this entry.

6 Fit of model and data ⓘ

6.1 Protein, DNA and RNA chains ⓘ

EDS was not executed - this section will therefore be empty.

6.2 Non-standard residues in protein, DNA, RNA chains ⓘ

EDS was not executed - this section will therefore be empty.

6.3 Carbohydrates ⓘ

EDS was not executed - this section will therefore be empty.

6.4 Ligands ⓘ

EDS was not executed - this section will therefore be empty.

6.5 Other polymers ⓘ

EDS was not executed - this section will therefore be empty.