



# Full wwPDB X-ray Structure Validation Report

Feb 26, 2014 – 10:25 PM GMT

PDB ID : 2FPT  
Title : Dual Binding Mode of a Novel Series of DHODH inhibitors  
Authors : Baumgartner, R.; Walloschek, M.; Kralik, M.; Gotschlich, A.; Tasler, S.;  
Leban, J.  
Deposited on : 2006-01-17  
Resolution : 2.40 Å(reported)

This is a full wwPDB validation report for a publicly released PDB entry.  
We welcome your comments at [validation@mail.wwpdb.org](mailto:validation@mail.wwpdb.org)  
A user guide is available at <http://wwpdb.org/ValidationPDFNotes.html>

---

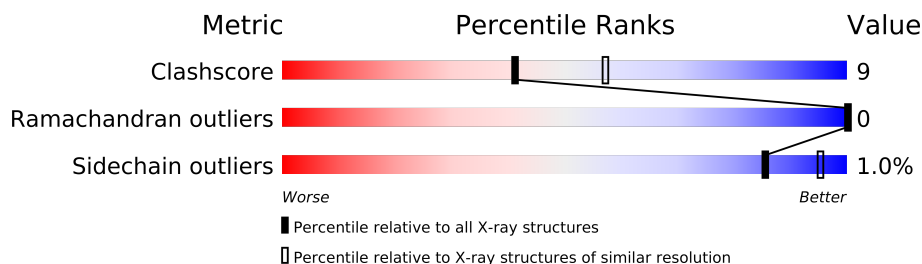
The following versions of software and data (see [references](#)) were used in the production of this report:

MolProbity : 4.02b-467  
Mogul : 1.15 2013  
Xtriage (Phenix) : **NOT EXECUTED**  
EDS : **NOT EXECUTED**  
Percentile statistics : 21963  
Ideal geometry (proteins) : Engh & Huber (2001)  
Ideal geometry (DNA, RNA) : Parkinson et. al. (1996)  
Validation Pipeline (wwPDB-VP) : stable22683

# 1 Overall quality at a glance

The reported resolution of this entry is 2.40 Å.


Percentile scores (ranging between 0-100) for global validation metrics of the entry are shown in the following graphic. The table shows the number of entries on which the scores are based.



Metric	Whole archive (#Entries)	Similar resolution (#Entries, resolution range(Å))
Clashscore	79885	2789 (2.40-2.40)
Ramachandran outliers	78287	2736 (2.40-2.40)
Sidechain outliers	78261	2737 (2.40-2.40)

The table below summarises the geometric issues observed across the polymeric chains and their fit to the electron density. The red, orange, yellow and green segments on the lower bar indicate the fraction of residues that contain outliers for  $\geq 3$ , 2, 1 and 0 types of geometric quality criteria. The upper red bar (where present) indicates the fraction of residues that have poor fit to the electron density.

Note EDS was not executed.

Mol	Chain	Length	Quality of chain
1	A	395	

## 2 Entry composition

There are 7 unique types of molecules in this entry. The entry contains 3154 atoms, of which 0 are hydrogen and 0 are deuterium.

In the tables below, the ZeroOcc column contains the number of atoms modelled with zero occupancy, the AltConf column contains the number of residues with at least one atom in alternate conformation and the Trace column contains the number of residues modelled with at most 2 atoms.

- Molecule 1 is a protein called Dihydroorotate dehydrogenase, mitochondrial.

Mol	Chain	Residues	Atoms					ZeroOcc	AltConf	Trace
			Total	C	N	O	S			
1	A	364	2778	1743	511	519	5	0	0	0

There are 28 discrepancies between the modelled and reference sequences:

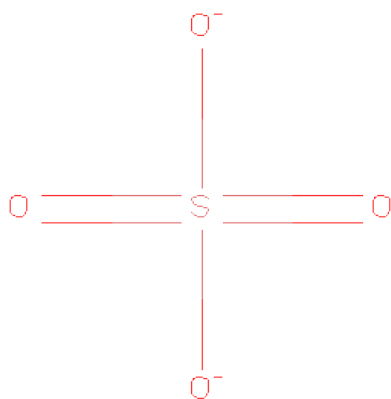
Chain	Residue	Modelled	Actual	Comment	Reference
A	2	MET	-	CLONING ARTIFACT	UNP Q02127
A	3	GLY	-	CLONING ARTIFACT	UNP Q02127
A	4	HIS	-	EXPRESSION TAG	UNP Q02127
A	5	HIS	-	EXPRESSION TAG	UNP Q02127
A	6	HIS	-	EXPRESSION TAG	UNP Q02127
A	7	HIS	-	EXPRESSION TAG	UNP Q02127
A	8	HIS	-	EXPRESSION TAG	UNP Q02127
A	9	HIS	-	EXPRESSION TAG	UNP Q02127
A	10	HIS	-	EXPRESSION TAG	UNP Q02127
A	11	HIS	-	EXPRESSION TAG	UNP Q02127
A	12	HIS	-	EXPRESSION TAG	UNP Q02127
A	13	HIS	-	EXPRESSION TAG	UNP Q02127
A	14	SER	-	CLONING ARTIFACT	UNP Q02127
A	15	SER	-	CLONING ARTIFACT	UNP Q02127
A	16	GLY	-	CLONING ARTIFACT	UNP Q02127
A	17	HIS	-	CLONING ARTIFACT	UNP Q02127
A	18	ILE	-	CLONING ARTIFACT	UNP Q02127
A	19	ASP	-	CLONING ARTIFACT	UNP Q02127
A	20	ASP	-	CLONING ARTIFACT	UNP Q02127
A	21	ASP	-	CLONING ARTIFACT	UNP Q02127
A	22	ASP	-	CLONING ARTIFACT	UNP Q02127
A	23	LYS	-	CLONING ARTIFACT	UNP Q02127
A	24	HIS	-	CLONING ARTIFACT	UNP Q02127
A	25	MET	-	CLONING ARTIFACT	UNP Q02127
A	26	LEU	-	CLONING ARTIFACT	UNP Q02127
A	27	GLU	-	CLONING ARTIFACT	UNP Q02127
A	28	ASP	-	CLONING ARTIFACT	UNP Q02127

*Continued on next page...*

*Continued from previous page...*

Chain	Residue	Modelled	Actual	Comment	Reference
A	29	PRO	-	CLONING ARTIFACT	UNP Q02127

- Molecule 2 is SULFATE ION (three-letter code: SO<sub>4</sub>) (formula: O<sub>4</sub>S).



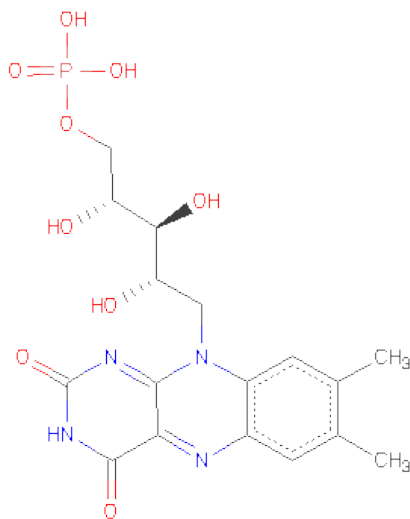
Mol	Chain	Residues	Atoms			ZeroOcc	AltConf
2	A	1	Total	O	S	0	0
			5	4	1		
2	A	1	Total	O	S	0	0
			5	4	1		
2	A	1	Total	O	S	0	0
			5	4	1		
2	A	1	Total	O	S	0	0
			5	4	1		

- Molecule 3 is ACETATE ION (three-letter code: ACT) (formula: C<sub>2</sub>H<sub>3</sub>O<sub>2</sub>).



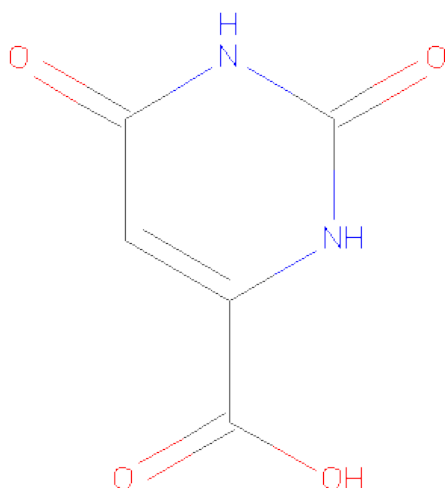
Mol	Chain	Residues	Atoms			ZeroOcc	AltConf
3	A	1	Total	C	O	0	0
			4	2	2		

- Molecule 4 is FLAVIN MONONUCLEOTIDE (three-letter code: FMN) (formula:  $C_{17}H_{21}N_4O_9P$ ).



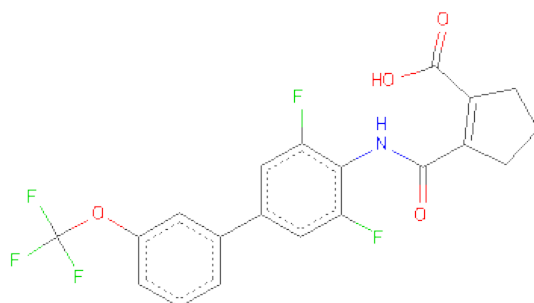
Mol	Chain	Residues	Atoms					ZeroOcc	AltConf
4	A	1	Total	C	N	O	P	0	0
			31	17	4	9	1		

- Molecule 5 is OROTIC ACID (three-letter code: ORO) (formula:  $C_5H_4N_2O_4$ ).



Mol	Chain	Residues	Atoms				ZeroOcc	AltConf
5	A	1	Total	C	N	O	0	0
			11	5	2	4		

- Molecule 6 is 2-([3,5-DIFLUORO-3'-(TRIFLUOROMETHOXY)BIPHENYL-4-YL]AMINO)CARBONYLCYCLOPENT-1-ENE-1-CARBOXYLICACID (three-letter code: ILB) (formula: C<sub>20</sub>H<sub>14</sub>F<sub>5</sub>NO<sub>4</sub>).



Mol	Chain	Residues	Atoms					ZeroOcc	AltConf
6	A	1	Total	C	F	N	O	0	1
			60	40	10	2	8		

- Molecule 7 is water.

Mol	Chain	Residues	Atoms		ZeroOcc	AltConf
7	A	250	Total 250	O 250	0	0

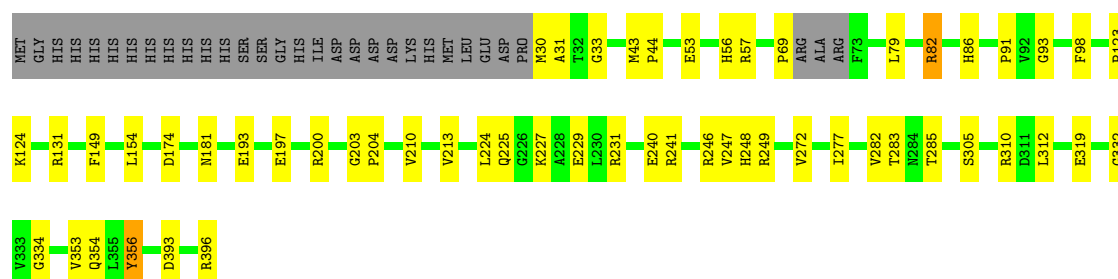
### 3 Residue-property plots

These plots are drawn for all protein, RNA and DNA chains in the entry. The first graphic for a chain summarises the proportions of errors displayed in the second graphic. The second graphic shows the sequence view annotated by issues in geometry and electron density. Residues are color-coded according to the number of geometric quality criteria for which they contain at least one outlier: green = 0, yellow = 1, orange = 2 and red = 3 or more. A red dot above a residue indicates a poor fit to the electron density ( $RSRZ > 2$ ). Stretches of 2 or more consecutive residues without any outlier are shown as a green connector. Residues present in the sample, but not in the model, are shown in grey.

Note EDS was not executed.

- Molecule 1: Dihydroorotate dehydrogenase, mitochondrial

Chain A: 





## 4 Data and refinement statistics

Xtriage (Phenix) and EDS were not executed - this section will therefore be incomplete.

Property	Value	Source
Space group	P 32 2 1	Depositor
Cell constants a, b, c, $\alpha$ , $\beta$ , $\gamma$	90.65Å 90.65Å 123.07Å 90.00° 90.00° 120.00°	Depositor
Resolution (Å)	11.97 – 2.40	Depositor
% Data completeness (in resolution range)	95.8 (11.97-2.40)	Depositor
$R_{merge}$	0.07	Depositor
$R_{sym}$	(Not available)	Depositor
Refinement program	CNX 2002	Depositor
R, $R_{free}$	0.175 , 0.211	Depositor
Estimated twinning fraction	No twinning to report.	Xtriage
Total number of atoms	3154	wwPDB-VP
Average B, all atoms (Å <sup>2</sup> )	25.0	wwPDB-VP

## 5 Model quality

### 5.1 Standard geometry

Bond lengths and bond angles in the following residue types are not validated in this section: FMN, ORO, ILB, SO4, ACT

The Z score for a bond length (or angle) is the number of standard deviations the observed value is removed from the expected value. A bond length (or angle) with  $|Z| > 5$  is considered an outlier worth inspection. RMSZ is the root-mean-square of all Z scores of the bond lengths (or angles).

Mol	Chain	Bond lengths		Bond angles	
		RMSZ	$\# Z  > 5$	RMSZ	$\# Z  > 5$
1	A	0.27	0/2823	0.57	0/3813

There are no bond length outliers.

There are no bond angle outliers.

There are no chirality outliers.

There are no planarity outliers.

### 5.2 Close contacts

In the following table, the Non-H and H(model) columns list the number of non-hydrogen atoms and hydrogen atoms in the chain respectively. The H(added) column lists the number of hydrogens added by MolProbity. The Clashes column lists the number of clashes within the asymmetric unit, and the number in parentheses is this value normalized per 1000 atoms of the molecule in the chain. The Symm-Clashes column gives symmetry related clashes, in the same way as for the Clashes column.

Mol	Chain	Non-H	H(model)	H(added)	Clashes	Symm-Clashes
1	A	2778	0	2838	53	0
2	A	20	0	0	0	0
3	A	4	0	3	0	0
4	A	31	0	19	0	0
5	A	11	0	3	1	0
6	A	60	0	26	0	0
7	A	250	0	0	5	0
All	All	3154	0	2889	53	0

Clashscore is defined as the number of clashes calculated for the entry per 1000 atoms (including hydrogens) of the entry. The overall clashscore for this entry is 9.

All (53) close contacts within the same asymmetric unit are listed below.

Atom-1	Atom-2	Distance(Å)	Clash(Å)
1:A:213:VAL:CG2	1:A:224:LEU:HB2	2.09	0.82
1:A:319:GLU:HG3	7:A:609:HOH:O	1.91	0.70
1:A:246:ARG:HH11	1:A:246:ARG:HG3	1.58	0.68
1:A:33:GLY:HA2	1:A:69:PRO:HB2	1.75	0.67
1:A:247:VAL:HG22	7:A:429:HOH:O	1.94	0.67
1:A:33:GLY:CA	1:A:69:PRO:HB2	2.29	0.63
1:A:53:GLU:O	1:A:57:ARG:HG3	2.01	0.61
1:A:213:VAL:HG13	1:A:225:GLN:HG2	1.84	0.60
1:A:82:ARG:HH12	1:A:86:HIS:N	2.00	0.60
1:A:193:GLU:O	1:A:197:GLU:HG3	2.02	0.60
1:A:282:VAL:CG1	1:A:283:THR:HG22	2.35	0.57
1:A:272:VAL:HG13	1:A:277:ILE:HB	1.87	0.56
1:A:246:ARG:HG2	7:A:499:HOH:O	2.06	0.54
1:A:393:ASP:O	1:A:396:ARG:HG2	2.08	0.54
1:A:310:ARG:HA	1:A:334:GLY:O	2.07	0.54
1:A:224:LEU:HD23	1:A:229:GLU:OE2	2.07	0.53
1:A:82:ARG:HH11	1:A:82:ARG:HG2	1.72	0.53
1:A:31:ALA:HA	1:A:69:PRO:HA	1.89	0.53
1:A:43:MET:HB2	1:A:44:PRO:HD3	1.89	0.53
1:A:246:ARG:HE	1:A:249:ARG:HH12	1.56	0.52
1:A:213:VAL:HG21	1:A:224:LEU:HB2	1.90	0.51
1:A:246:ARG:HH11	1:A:246:ARG:CG	2.24	0.51
1:A:282:VAL:HG13	1:A:283:THR:HG22	1.94	0.50
1:A:82:ARG:NH1	1:A:82:ARG:HG2	2.27	0.50
1:A:57:ARG:HH11	1:A:131:ARG:NH2	2.10	0.49
1:A:213:VAL:HG23	1:A:224:LEU:HB2	1.92	0.49
1:A:241:ARG:HD2	1:A:241:ARG:C	2.33	0.49
1:A:247:VAL:HG23	1:A:248:HIS:CD2	2.48	0.49
1:A:282:VAL:HG12	1:A:283:THR:CG2	2.43	0.48
1:A:30:MET:O	1:A:69:PRO:HB3	2.13	0.48
1:A:356:TYR:C	1:A:356:TYR:CD2	2.86	0.47
1:A:246:ARG:HD3	1:A:249:ARG:NH1	2.30	0.47
1:A:124:LYS:HE2	7:A:592:HOH:O	2.14	0.47
1:A:123:PRO:HA	1:A:154:LEU:HG	1.95	0.47
1:A:181:ASN:HA	1:A:210:VAL:HB	1.97	0.47
1:A:203:GLY:N	1:A:204:PRO:CD	2.79	0.46
1:A:332:GLY:O	1:A:353:VAL:HA	2.16	0.46
1:A:282:VAL:HA	1:A:283:THR:HA	1.72	0.46
1:A:123:PRO:HA	1:A:154:LEU:CD1	2.48	0.44
1:A:282:VAL:HG12	1:A:283:THR:HG22	1.98	0.43
1:A:56:HIS:HE1	1:A:98:PHE:O	2.02	0.43
1:A:246:ARG:NH1	1:A:246:ARG:CG	2.82	0.42

*Continued on next page...*

Continued from previous page...

Atom-1	Atom-2	Distance(Å)	Clash(Å)
1:A:200:ARG:HH11	1:A:240:GLU:CD	2.22	0.42
1:A:227:LYS:HE3	1:A:231:ARG:HH22	1.85	0.42
1:A:79:LEU:O	1:A:91:PRO:HD3	2.19	0.41
1:A:356:TYR:C	1:A:356:TYR:HD2	2.24	0.41
1:A:200:ARG:NH1	1:A:240:GLU:CD	2.74	0.41
1:A:312:LEU:HD11	7:A:500:HOH:O	2.20	0.41
1:A:213:VAL:O	1:A:213:VAL:HG22	2.21	0.41
1:A:285:THR:HG22	1:A:305:SER:HB3	2.02	0.41
1:A:93:GLY:O	1:A:354:GLN:HA	2.20	0.41
1:A:149:PHE:CE2	5:A:399:ORO:H5	2.56	0.40
1:A:246:ARG:NE	1:A:249:ARG:HH12	2.20	0.40

There are no symmetry-related clashes.

## 5.3 Torsion angles

### 5.3.1 Protein backbone ⓘ

In the following table, the Percentiles column shows the percent Ramachandran outliers of the chain as a percentile score with respect to all X-ray entries followed by that with respect to entries of similar resolution. The Analysed column shows the number of residues for which the backbone conformation was analysed, and the total number of residues.

Mol	Chain	Analysed	Favoured	Allowed	Outliers	Percentiles	
1	A	360/395 (91%)	347 (96%)	13 (4%)	0	100	100

There are no Ramachandran outliers to report.

### 5.3.2 Protein sidechains ⓘ

In the following table, the Percentiles column shows the percent sidechain outliers of the chain as a percentile score with respect to all X-ray entries followed by that with respect to entries of similar resolution. The Analysed column shows the number of residues for which the sidechain conformation was analysed, and the total number of residues.

Mol	Chain	Analysed	Rotameric	Outliers	Percentiles	
1	A	294/322 (91%)	291 (99%)	3 (1%)	85	95

All (3) residues with a non-rotameric sidechain are listed below:

Mol	Chain	Res	Type
1	A	82	ARG
1	A	174	ASP
1	A	356	TYR

Some sidechains can be flipped to improve hydrogen bonding and reduce clashes. All (3) such sidechains are listed below:

Mol	Chain	Res	Type
1	A	47	GLN
1	A	56	HIS
1	A	159	HIS

### 5.3.3 RNA ⓘ

There are no RNA chains in this entry.

## 5.4 Non-standard residues in protein, DNA, RNA chains ⓘ

There are no non-standard protein/DNA/RNA residues in this entry.

## 5.5 Carbohydrates ⓘ

There are no carbohydrates in this entry.

## 5.6 Ligand geometry ⓘ

9 ligands are modelled in this entry.

In the following table, the Counts columns list the number of bonds (or angles) for which Mogul statistics could be retrieved, the number of bonds (or angles) that are observed in the model and the number of bonds (or angles) that are defined in the chemical component dictionary. The Link column lists molecule types, if any, to which the group is linked. The Z score for a bond length (or angle) is the number of standard deviations the observed value is removed from the expected value. A bond length (or angle) with  $|Z| > 2$  is considered an outlier worth inspection. RMSZ is the root-mean-square of all Z scores of the bond lengths (or angles).

Mol	Type	Chain	Res	Link	Bond lengths			Bond angles		
					Counts	RMSZ	$\# Z  > 2$	Counts	RMSZ	$\# Z  > 2$
4	FMN	A	398	-	33,33,33	1.89	7 (21%)	46,50,50	1.76	5 (10%)
5	ORO	A	399	-	11,11,11	2.19	2 (18%)	11,15,15	2.10	4 (36%)
2	SO4	A	400	-	4,4,4	0.22	0	6,6,6	0.05	0

Mol	Type	Chain	Res	Link	Bond lengths			Bond angles		
					Counts	RMSZ	# Z  > 2	Counts	RMSZ	# Z  > 2
3	ACT	A	401	-	1,3,3	4.44	1 (100%)	0,3,3	0.00	-
2	SO4	A	402	-	4,4,4	0.13	0	6,6,6	0.11	0
2	SO4	A	403	-	4,4,4	0.27	0	6,6,6	0.08	0
2	SO4	A	404	-	4,4,4	0.24	0	6,6,6	0.09	0
6	ILB	A	405[A]	-	32,32,32	3.54	15 (46%)	47,47,47	1.91	14 (29%)
6	ILB	A	405[B]	-	32,32,32	2.90	13 (40%)	47,47,47	1.87	13 (27%)

In the following table, the Chirals column lists the number of chiral outliers, the number of chiral centers analysed, the number of these observed in the model and the number defined in the chemical component dictionary. Similar counts are reported in the Torsion and Rings columns. '-' means no outliers of that kind were identified.

Mol	Type	Chain	Res	Link	Chirals	Torsions	Rings
4	FMN	A	398	-	-	0/18/18/18	0/0/3/3
5	ORO	A	399	-	-	0/4/4/4	0/1/1/1
2	SO4	A	400	-	-	0/0/0/0	0/0/0/0
3	ACT	A	401	-	-	0/0/0/0	0/0/0/0
2	SO4	A	402	-	-	0/0/0/0	0/0/0/0
2	SO4	A	403	-	-	0/0/0/0	0/0/0/0
2	SO4	A	404	-	-	0/0/0/0	0/0/0/0
6	ILB	A	405[A]	-	-	0/21/31/31	0/3/3/3
6	ILB	A	405[B]	-	-	0/21/31/31	0/3/3/3

All (38) bond length outliers are listed below:

Mol	Chain	Res	Type	Atoms	Z	Observed(Å)	Ideal(Å)
6	A	405[A]	ILB	C11-C9	9.42	1.48	1.38
6	A	405[A]	ILB	C11-C13	8.05	1.47	1.38
6	A	405[B]	ILB	C11-C13	7.00	1.46	1.38
6	A	405[B]	ILB	C11-C9	6.48	1.45	1.38
5	A	399	ORO	C6-N1	5.64	1.41	1.35
6	A	405[A]	ILB	C4-C3	5.37	1.49	1.38
6	A	405[A]	ILB	C15-C6	5.16	1.49	1.39
6	A	405[A]	ILB	C7-C5	5.04	1.50	1.39
6	A	405[A]	ILB	C8-C6	4.96	1.49	1.39
6	A	405[A]	ILB	C4-C5	4.79	1.48	1.39
6	A	405[A]	ILB	C2-C3	4.76	1.48	1.38
6	A	405[B]	ILB	O25-C23	4.62	1.36	1.22
4	A	398	FMN	C4A-C10	4.52	1.48	1.40
6	A	405[B]	ILB	C4-C3	4.48	1.47	1.38
3	A	401	ACT	CH3-C	4.44	1.55	1.48
6	A	405[A]	ILB	C15-C13	4.42	1.45	1.37

*Continued on next page...*

*Continued from previous page...*

Mol	Chain	Res	Type	Atoms	Z	Observed(Å)	Ideal(Å)
6	A	405[B]	ILB	C15-C6	4.39	1.48	1.39
4	A	398	FMN	C9A-N10	4.33	1.45	1.38
6	A	405[A]	ILB	O25-C23	4.17	1.35	1.22
6	A	405[B]	ILB	C15-C13	3.99	1.44	1.37
6	A	405[A]	ILB	C8-C9	3.98	1.44	1.37
4	A	398	FMN	C4-C4A	3.95	1.47	1.41
6	A	405[B]	ILB	C4-C5	3.93	1.47	1.39
6	A	405[B]	ILB	C2-C3	3.83	1.46	1.38
4	A	398	FMN	C6-C5A	3.81	1.46	1.41
6	A	405[B]	ILB	C7-C5	3.71	1.47	1.39
4	A	398	FMN	C2-N3	3.71	1.44	1.37
6	A	405[B]	ILB	C8-C6	3.70	1.46	1.39
6	A	405[B]	ILB	C8-C9	3.31	1.43	1.37
6	A	405[A]	ILB	C16-N12	3.10	1.42	1.35
5	A	399	ORO	C5-C4	2.66	1.47	1.40
6	A	405[B]	ILB	C16-N12	2.63	1.41	1.35
6	A	405[A]	ILB	C1-C2	2.40	1.44	1.39
6	A	405[A]	ILB	O26-C27	2.29	1.49	1.30
4	A	398	FMN	C5A-N5	2.17	1.38	1.35
6	A	405[A]	ILB	C1-C7	2.04	1.43	1.39
6	A	405[B]	ILB	C1-C2	2.03	1.43	1.39
4	A	398	FMN	O3'-C3'	2.00	1.47	1.43

All (36) bond angle outliers are listed below:

Mol	Chain	Res	Type	Atoms	Z	Observed(°)	Ideal(°)
4	A	398	FMN	C4A-C10-N10	-7.84	116.60	120.51
6	A	405[B]	ILB	C11-N12-C16	6.80	138.17	123.69
4	A	398	FMN	C2-N1-C10	5.99	121.02	114.98
5	A	399	ORO	C2-N1-C6	-4.88	119.45	123.46
6	A	405[A]	ILB	C17-C16-N12	4.48	124.13	115.15
6	A	405[A]	ILB	C11-N12-C16	4.38	133.03	123.69
6	A	405[A]	ILB	F14-C13-C11	4.10	121.23	117.73
6	A	405[B]	ILB	F14-C13-C11	3.89	121.05	117.73
6	A	405[A]	ILB	C7-C5-C6	-3.79	114.75	121.41
6	A	405[B]	ILB	C9-C11-N12	-3.49	118.31	122.03
6	A	405[B]	ILB	C17-C16-N12	3.45	122.07	115.15
6	A	405[A]	ILB	C4-C5-C6	3.43	126.92	120.89
6	A	405[A]	ILB	O24-C23-O25	-3.24	115.95	123.62
6	A	405[A]	ILB	C13-C11-C9	3.08	119.11	115.75
6	A	405[B]	ILB	O24-C23-O25	-3.07	116.35	123.62
6	A	405[B]	ILB	C13-C11-C9	2.85	118.86	115.75

*Continued on next page...*

*Continued from previous page...*

Mol	Chain	Res	Type	Atoms	Z	Observed(°)	Ideal(°)
6	A	405[A]	ILB	O18-C16-N12	-2.83	118.03	123.81
6	A	405[B]	ILB	C15-C13-C11	-2.78	120.58	123.59
6	A	405[B]	ILB	C7-C5-C6	-2.74	116.58	121.41
6	A	405[A]	ILB	C15-C13-C11	-2.69	120.69	123.59
6	A	405[A]	ILB	C9-C11-N12	-2.63	119.23	122.03
6	A	405[A]	ILB	C20-C19-C17	-2.60	109.16	111.49
5	A	399	ORO	O72-C7-O71	2.55	129.13	123.35
6	A	405[A]	ILB	O24-C23-C19	2.55	124.34	116.40
5	A	399	ORO	C5-C6-N1	2.52	124.05	119.72
6	A	405[A]	ILB	C8-C9-C11	-2.51	120.88	123.59
4	A	398	FMN	C4A-N5-C5A	2.43	119.42	116.69
6	A	405[B]	ILB	O24-C23-C19	2.39	123.85	116.40
6	A	405[B]	ILB	O18-C16-N12	-2.37	118.97	123.81
6	A	405[B]	ILB	C4-C5-C6	2.33	124.99	120.89
6	A	405[B]	ILB	C20-C19-C17	-2.25	109.48	111.49
4	A	398	FMN	C2'-C1'-N10	2.24	115.42	112.45
5	A	399	ORO	O72-C7-C6	-2.16	108.04	113.39
6	A	405[A]	ILB	F10-C9-C11	2.14	119.56	117.73
4	A	398	FMN	C10-C4A-N5	2.03	122.92	120.45
6	A	405[B]	ILB	C8-C9-C11	-2.01	121.42	123.59

There are no chirality outliers.

There are no torsion outliers.

There are no ring outliers.

## 5.7 Other polymers ⓘ

There are no such residues in this entry.

## 5.8 Polymer linkage issues

There are no chain breaks in this entry.



## 6 Fit of model and data ⓘ

### 6.1 Protein, DNA and RNA chains ⓘ

EDS was not executed - this section will therefore be empty.

### 6.2 Non-standard residues in protein, DNA, RNA chains ⓘ

EDS was not executed - this section will therefore be empty.

### 6.3 Carbohydrates ⓘ

EDS was not executed - this section will therefore be empty.

### 6.4 Ligands ⓘ

EDS was not executed - this section will therefore be empty.

### 6.5 Other polymers ⓘ

EDS was not executed - this section will therefore be empty.