



Full wwPDB X-ray Structure Validation Report

Feb 28, 2014 – 08:40 AM GMT

PDB ID : 3FPT
Title : The Crystal Structure of the Complex between Evasin-1 and CCL3
Authors : Shaw, J.P.; Dias, J.M.
Deposited on : 2009-01-06
Resolution : 2.70 Å(reported)

This is a full wwPDB validation report for a publicly released PDB entry.
We welcome your comments at validation@mail.wwpdb.org
A user guide is available at <http://wwpdb.org/ValidationPDFNotes.html>

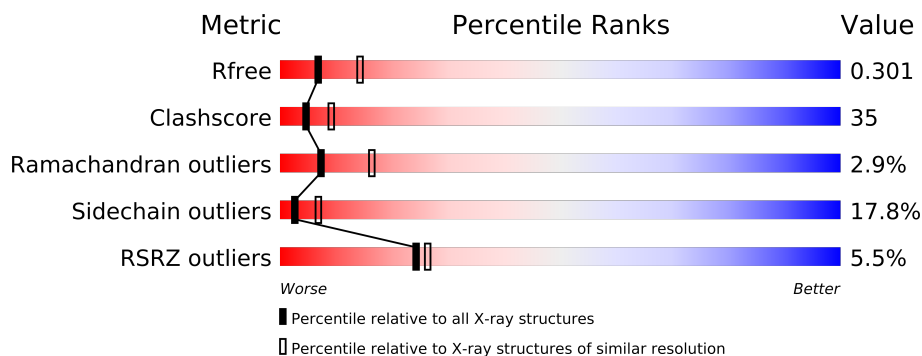
The following versions of software and data (see [references](#)) were used in the production of this report:

MolProbity : 4.02b-467
Mogul : 1.15 2013
Xtriage (Phenix) : dev-1323
EDS : stable22639
Percentile statistics : 21963
Refmac : 5.8.0049
CCP4 : 6.3.0 (Settle)
Ideal geometry (proteins) : Engh & Huber (2001)
Ideal geometry (DNA, RNA) : Parkinson et. al. (1996)
Validation Pipeline (wwPDB-VP) : stable22683

1 Overall quality at a glance

The reported resolution of this entry is 2.70 Å.

Percentile scores (ranging between 0-100) for global validation metrics of the entry are shown in the following graphic. The table shows the number of entries on which the scores are based.



Metric	Whole archive (#Entries)	Similar resolution (#Entries, resolution range(Å))
R_{free}	66092	1557 (2.70-2.70)
Clashscore	79885	1939 (2.70-2.70)
Ramachandran outliers	78287	1905 (2.70-2.70)
Sidechain outliers	78261	1905 (2.70-2.70)
RSRZ outliers	66119	1559 (2.70-2.70)

The table below summarises the geometric issues observed across the polymeric chains and their fit to the electron density. The red, orange, yellow and green segments on the lower bar indicate the fraction of residues that contain outliers for ≥ 3 , 2, 1 and 0 types of geometric quality criteria. The upper red bar (where present) indicates the fraction of residues that have poor fit to the electron density.

Mol	Chain	Length	Quality of chain
1	A	100	
1	B	100	
1	C	100	

The following table lists non-polymeric compounds that are outliers for geometric or electron-density-fit criteria:

Mol	Type	Chain	Res	Geometry	Electron density
2	NAG	B	119	-	X
2	NAG	C	142	-	X
3	NDG	C	134	-	X

2 Entry composition

There are 4 unique types of molecules in this entry. The entry contains 2007 atoms, of which 0 are hydrogen and 0 are deuterium.

In the tables below, the ZeroOcc column contains the number of atoms modelled with zero occupancy, the AltConf column contains the number of residues with at least one atom in alternate conformation and the Trace column contains the number of residues modelled with at most 2 atoms.

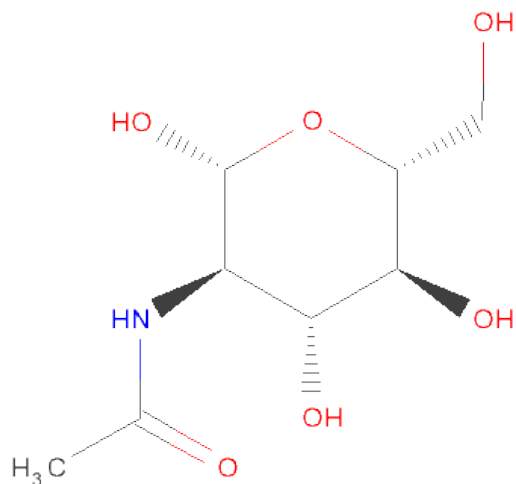
- Molecule 1 is a protein called Evasin-1.

Mol	Chain	Residues	Atoms					ZeroOcc	AltConf	Trace
1	A	88	Total	C	N	O	S	0	0	0
			670	410	119	132	9			
1	B	79	Total	C	N	O	S	0	0	0
			604	370	106	119	9			
1	C	82	Total	C	N	O	S	0	0	0
			621	381	109	122	9			

There are 18 discrepancies between the modelled and reference sequences:

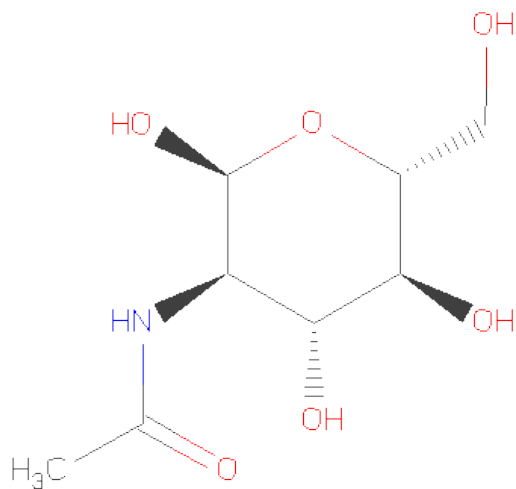
Chain	Residue	Modelled	Actual	Comment	Reference
A	95	HIS	-	EXPRESSION TAG	UNP P0C8E7
A	96	HIS	-	EXPRESSION TAG	UNP P0C8E7
A	97	HIS	-	EXPRESSION TAG	UNP P0C8E7
A	98	HIS	-	EXPRESSION TAG	UNP P0C8E7
A	99	HIS	-	EXPRESSION TAG	UNP P0C8E7
A	100	HIS	-	EXPRESSION TAG	UNP P0C8E7
B	95	HIS	-	EXPRESSION TAG	UNP P0C8E7
B	96	HIS	-	EXPRESSION TAG	UNP P0C8E7
B	97	HIS	-	EXPRESSION TAG	UNP P0C8E7
B	98	HIS	-	EXPRESSION TAG	UNP P0C8E7
B	99	HIS	-	EXPRESSION TAG	UNP P0C8E7
B	100	HIS	-	EXPRESSION TAG	UNP P0C8E7
C	95	HIS	-	EXPRESSION TAG	UNP P0C8E7
C	96	HIS	-	EXPRESSION TAG	UNP P0C8E7
C	97	HIS	-	EXPRESSION TAG	UNP P0C8E7
C	98	HIS	-	EXPRESSION TAG	UNP P0C8E7
C	99	HIS	-	EXPRESSION TAG	UNP P0C8E7
C	100	HIS	-	EXPRESSION TAG	UNP P0C8E7

- Molecule 2 is SUGAR (N-ACETYL-D-GLUCOSAMINE) (three-letter code: NAG) (formula: $C_8H_{15}NO_6$).



Mol	Chain	Residues	Atoms				ZeroOcc	AltConf
2	A	1	Total	C	N	O	0	0
			14	8	1	5		
2	A	1	Total	C	N	O	0	0
			14	8	1	5		
2	B	1	Total	C	N	O	0	0
			14	8	1	5		
2	C	1	Total	C	N	O	0	0
			14	8	1	5		

- Molecule 3 is SUGAR (2-(ACETYLAMINO)-2-DEOXY-A-D-GLUCOPYRANOSE) (three-letter code: NDG) (formula: C₈H₁₅NO₆).



Mol	Chain	Residues	Atoms				ZeroOcc	AltConf
3	C	1	Total	C	N	O	0	0
			14	8	1	5		
3	C	1	Total	C	N	O	0	0
			14	8	1	5		

- Molecule 4 is water.

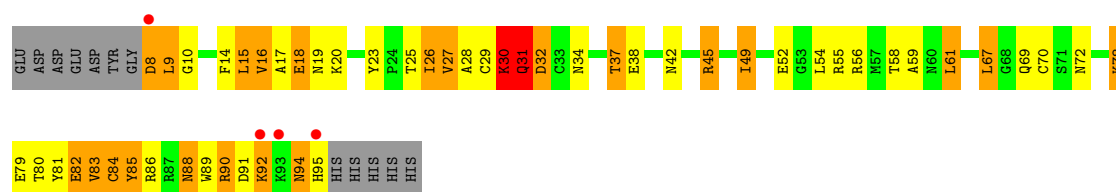
Mol	Chain	Residues	Atoms		ZeroOcc	AltConf
4	A	13	Total	O	0	0
			13	13		
4	B	11	Total	O	0	0
			11	11		
4	C	4	Total	O	0	0
			4	4		

3 Residue-property plots i

These plots are drawn for all protein, RNA and DNA chains in the entry. The first graphic for a chain summarises the proportions of errors displayed in the second graphic. The second graphic shows the sequence view annotated by issues in geometry and electron density. Residues are color-coded according to the number of geometric quality criteria for which they contain at least one outlier: green = 0, yellow = 1, orange = 2 and red = 3 or more. A red dot above a residue indicates a poor fit to the electron density ($RSRZ > 2$). Stretches of 2 or more consecutive residues without any outlier are shown as a green connector. Residues present in the sample, but not in the model, are shown in grey.

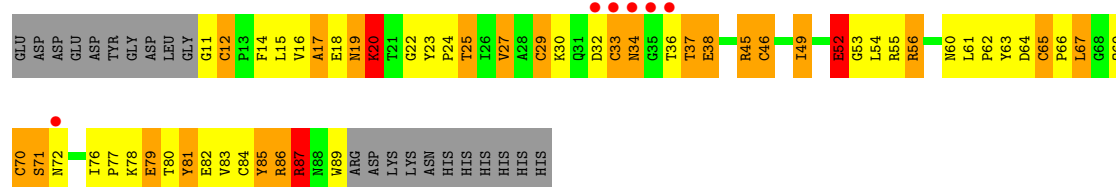
• Molecule 1: Evasin-1

Chain A: 



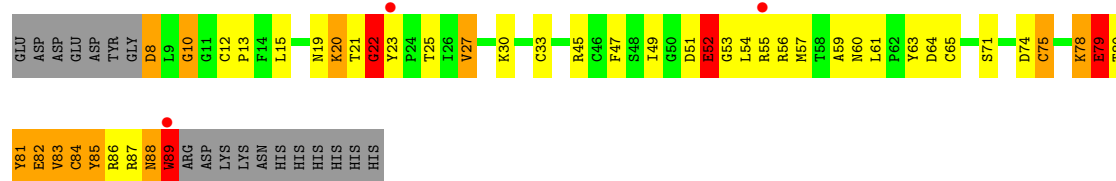
• Molecule 1: Evasin-1

Chain B: 



• Molecule 1: Evasin-1

Chain C: 



4 Data and refinement statistics

Property	Value	Source
Space group	P 21 21 21	Depositor
Cell constants a, b, c, α , β , γ	68.70Å 70.49Å 103.82Å 90.00° 90.00° 90.00°	Depositor
Resolution (Å)	32.62 – 2.70 32.61 – 2.70	Depositor EDS
% Data completeness (in resolution range)	99.0 (32.62-2.70) 99.0 (32.61-2.70)	Depositor EDS
R_{merge}	(Not available)	Depositor
R_{sym}	0.08	Depositor
$\langle I/\sigma(I) \rangle$ ¹	3.06 (at 2.68Å)	Xtriage
Refinement program	REFMAC 5.2.0019	Depositor
R, R_{free}	0.226 , 0.305 0.226 , 0.301	Depositor DCC
R_{free} test set	717 reflections (5.30%)	DCC
Wilson B-factor (Å ²)	66.9	Xtriage
Anisotropy	0.111	Xtriage
Bulk solvent k_{sol} (e/Å ³), B_{sol} (Å ²)	0.34 , 42.9	EDS
Estimated twinning fraction	0.016 for k,h,-l	Xtriage
L-test for twinning	$\langle L \rangle = 0.50$, $\langle L^2 \rangle = 0.33$	Xtriage
Outliers	0 of 14237 reflections	Xtriage
F_o, F_c correlation	0.93	EDS
Total number of atoms	2007	wwPDB-VP
Average B, all atoms (Å ²)	59.0	wwPDB-VP

Xtriage's analysis on translational NCS is as follows: *The largest off-origin peak in the Patterson function is 5.99% of the height of the origin peak. No significant pseudotranslation is detected.*

¹Intensities estimated from amplitudes.

5 Model quality

5.1 Standard geometry

Bond lengths and bond angles in the following residue types are not validated in this section: NAG, NDG

The Z score for a bond length (or angle) is the number of standard deviations the observed value is removed from the expected value. A bond length (or angle) with $|Z| > 5$ is considered an outlier worth inspection. RMSZ is the root-mean-square of all Z scores of the bond lengths (or angles).

Mol	Chain	Bond lengths		Bond angles	
		RMSZ	# Z >5	RMSZ	# Z >5
1	A	2.07	25/684 (3.7%)	2.00	31/927 (3.3%)
1	B	2.25	29/617 (4.7%)	2.12	34/838 (4.1%)
1	C	2.18	20/634 (3.2%)	1.69	14/861 (1.6%)
All	All	2.17	74/1935 (3.8%)	1.95	79/2626 (3.0%)

Chiral center outliers are detected by calculating the chiral volume of a chiral center and verifying if the center is modelled as a planar moiety or with the opposite hand. A planarity outlier is detected by checking planarity of atoms in a peptide group, atoms in a mainchain group or atoms of a sidechain that are expected to be planar.

Mol	Chain	#Chirality outliers	#Planarity outliers
1	A	0	2
1	B	0	1
All	All	0	3

All (74) bond length outliers are listed below:

Mol	Chain	Res	Type	Atoms	Z	Observed(Å)	Ideal(Å)
1	C	84	CYS	CB-SG	-19.87	1.48	1.82
1	C	85	TYR	CD1-CE1	12.57	1.58	1.39
1	B	18	GLU	CB-CG	10.82	1.72	1.52
1	B	84	CYS	CB-SG	-10.75	1.64	1.82
1	C	52	GLU	CG-CD	8.94	1.65	1.51
1	A	56	ARG	CA-CB	8.79	1.73	1.53
1	C	81	TYR	CG-CD1	8.67	1.50	1.39
1	A	27	VAL	CB-CG1	-8.54	1.34	1.52
1	A	17	ALA	C-O	8.15	1.38	1.23
1	A	83	VAL	N-CA	-8.09	1.30	1.46
1	B	17	ALA	CA-CB	-7.96	1.35	1.52
1	C	85	TYR	CE1-CZ	7.82	1.48	1.38
1	B	29	CYS	CB-SG	-7.64	1.69	1.82

Continued on next page...

Continued from previous page...

Mol	Chain	Res	Type	Atoms	Z	Observed(Å)	Ideal(Å)
1	B	20	LYS	CB-CG	7.55	1.73	1.52
1	A	52	GLU	CG-CD	7.53	1.63	1.51
1	A	82	GLU	C-N	7.53	1.51	1.34
1	B	20	LYS	CD-CE	7.49	1.70	1.51
1	B	17	ALA	C-O	7.24	1.37	1.23
1	B	81	TYR	CB-CG	-7.14	1.41	1.51
1	B	14	PHE	CE2-CZ	6.98	1.50	1.37
1	A	81	TYR	C-N	6.92	1.50	1.34
1	B	18	GLU	C-O	6.83	1.36	1.23
1	B	86	ARG	CZ-NH1	6.83	1.42	1.33
1	A	81	TYR	CB-CG	-6.73	1.41	1.51
1	B	56	ARG	CB-CG	6.72	1.70	1.52
1	B	86	ARG	CG-CD	6.66	1.68	1.51
1	C	89	TRP	CB-CG	6.62	1.62	1.50
1	B	25	THR	CB-OG1	6.54	1.56	1.43
1	C	85	TYR	CD2-CE2	6.33	1.48	1.39
1	B	23	TYR	CB-CG	-6.23	1.42	1.51
1	A	78	LYS	N-CA	-6.13	1.34	1.46
1	C	81	TYR	CD1-CE1	6.13	1.48	1.39
1	A	28	ALA	CA-CB	-6.06	1.39	1.52
1	A	83	VAL	CB-CG1	6.03	1.65	1.52
1	B	16	VAL	CB-CG1	6.03	1.65	1.52
1	C	81	TYR	CE2-CZ	6.01	1.46	1.38
1	C	30	LYS	CE-NZ	5.96	1.64	1.49
1	B	52	GLU	CG-CD	5.83	1.60	1.51
1	A	18	GLU	CG-CD	5.82	1.60	1.51
1	C	75	CYS	CB-SG	-5.75	1.72	1.81
1	B	85	TYR	CE2-CZ	5.75	1.46	1.38
1	B	55	ARG	CG-CD	5.70	1.66	1.51
1	B	81	TYR	CG-CD1	5.70	1.46	1.39
1	C	23	TYR	CG-CD1	5.70	1.46	1.39
1	A	42	ASN	CG-ND2	5.68	1.47	1.32
1	A	19	ASN	CG-ND2	5.66	1.47	1.32
1	C	10	GLY	C-O	5.65	1.32	1.23
1	A	67	LEU	C-N	5.61	1.43	1.33
1	A	82	GLU	CD-OE1	5.59	1.31	1.25
1	B	18	GLU	CD-OE2	5.56	1.31	1.25
1	A	8	ASP	CB-CG	5.55	1.63	1.51
1	B	65	CYS	CB-SG	5.51	1.91	1.82
1	C	79	GLU	CD-OE2	5.46	1.31	1.25
1	C	81	TYR	CD2-CE2	5.45	1.47	1.39
1	B	25	THR	N-CA	5.39	1.57	1.46

Continued on next page...

Continued from previous page...

Mol	Chain	Res	Type	Atoms	Z	Observed(Å)	Ideal(Å)
1	C	23	TYR	CD2-CE2	5.37	1.47	1.39
1	B	16	VAL	C-O	5.36	1.33	1.23
1	A	52	GLU	CD-OE2	5.34	1.31	1.25
1	A	38	GLU	CB-CG	-5.33	1.42	1.52
1	C	79	GLU	CD-OE1	5.31	1.31	1.25
1	C	33	CYS	CB-SG	-5.26	1.73	1.81
1	B	46	CYS	CB-SG	5.24	1.91	1.82
1	B	87	ARG	CG-CD	5.24	1.65	1.51
1	A	67	LEU	CA-C	-5.24	1.39	1.52
1	B	14	PHE	CB-CG	-5.23	1.42	1.51
1	C	81	TYR	CA-CB	5.22	1.65	1.53
1	A	83	VAL	C-N	5.21	1.46	1.34
1	C	79	GLU	CG-CD	5.15	1.59	1.51
1	A	55	ARG	CG-CD	5.10	1.64	1.51
1	A	45	ARG	C-O	5.07	1.32	1.23
1	A	37	THR	N-CA	-5.06	1.36	1.46
1	A	52	GLU	CD-OE1	5.06	1.31	1.25
1	B	27	VAL	CB-CG1	-5.06	1.42	1.52
1	B	85	TYR	C-O	-5.02	1.13	1.23

All (79) bond angle outliers are listed below:

Mol	Chain	Res	Type	Atoms	Z	Observed(°)	Ideal(°)
1	B	86	ARG	NE-CZ-NH2	-11.22	114.69	120.30
1	B	84	CYS	CB-CA-C	-11.10	88.21	110.40
1	B	84	CYS	CA-CB-SG	10.43	132.77	114.00
1	B	29	CYS	CA-CB-SG	-10.21	95.62	114.00
1	A	82	GLU	OE1-CD-OE2	-9.96	111.35	123.30
1	B	55	ARG	NE-CZ-NH2	-9.93	115.34	120.30
1	C	84	CYS	CB-CA-C	-8.84	92.72	110.40
1	B	17	ALA	CB-CA-C	-8.73	97.01	110.10
1	B	19	ASN	N-CA-CB	7.80	124.64	110.60
1	A	67	LEU	CB-CA-C	-7.73	95.51	110.20
1	C	64	ASP	CB-CG-OD1	-7.60	111.46	118.30
1	B	16	VAL	CB-CA-C	-7.59	96.98	111.40
1	A	83	VAL	CG1-CB-CG2	-7.39	99.07	110.90
1	A	85	TYR	N-CA-CB	7.28	123.70	110.60
1	B	85	TYR	CZ-CE2-CD2	-7.12	113.39	119.80
1	A	69	GLN	CB-CA-C	-6.79	96.82	110.40
1	A	16	VAL	CA-C-O	-6.71	106.02	120.10
1	B	22	GLY	CA-C-O	-6.67	108.59	120.60
1	A	83	VAL	O-C-N	-6.63	112.09	122.70

Continued on next page...

Continued from previous page...

Mol	Chain	Res	Type	Atoms	Z	Observed(°)	Ideal(°)
1	B	55	ARG	NE-CZ-NH1	6.56	123.58	120.30
1	B	30	LYS	CB-CA-C	-6.54	97.33	110.40
1	C	61	LEU	CB-CG-CD1	6.39	121.86	111.00
1	B	18	GLU	CB-CA-C	-6.38	97.65	110.40
1	B	81	TYR	CB-CG-CD2	-6.34	117.19	121.00
1	B	64	ASP	CB-CG-OD1	6.33	123.99	118.30
1	B	19	ASN	CB-CA-C	-6.26	97.88	110.40
1	A	70	CYS	CB-CA-C	-6.25	97.90	110.40
1	C	27	VAL	N-CA-CB	-6.25	97.75	111.50
1	C	8	ASP	C-N-CA	-6.21	106.18	121.70
1	C	79	GLU	N-CA-C	6.14	127.58	111.00
1	A	32	ASP	CB-CG-OD1	-6.13	112.78	118.30
1	A	85	TYR	CB-CA-C	-6.09	98.22	110.40
1	B	64	ASP	CB-CG-OD2	-6.09	112.82	118.30
1	B	87	ARG	NE-CZ-NH2	-6.01	117.30	120.30
1	A	30	LYS	CD-CE-NZ	-6.00	97.89	111.70
1	B	15	LEU	O-C-N	-5.93	113.20	122.70
1	A	26	ILE	CB-CA-C	-5.93	99.75	111.60
1	A	70	CYS	N-CA-CB	5.92	121.25	110.60
1	B	23	TYR	CB-CG-CD2	-5.89	117.47	121.00
1	C	55	ARG	NE-CZ-NH2	-5.88	117.36	120.30
1	B	25	THR	N-CA-CB	-5.84	99.21	110.30
1	A	83	VAL	CA-C-O	5.79	132.26	120.10
1	B	70	CYS	CA-CB-SG	-5.79	103.59	114.00
1	B	86	ARG	NH1-CZ-NH2	5.77	125.75	119.40
1	B	17	ALA	N-CA-CB	5.72	118.10	110.10
1	A	95	HIS	N-CA-C	5.69	126.35	111.00
1	B	85	TYR	N-CA-CB	-5.65	100.43	110.60
1	B	23	TYR	CG-CD1-CE1	-5.63	116.80	121.30
1	A	67	LEU	CB-CG-CD1	5.62	120.55	111.00
1	C	75	CYS	CA-CB-SG	5.53	123.94	114.00
1	B	45	ARG	CG-CD-NE	-5.49	100.28	111.80
1	A	16	VAL	N-CA-CB	-5.47	99.47	111.50
1	A	82	GLU	CB-CA-C	-5.42	99.57	110.40
1	A	82	GLU	N-CA-CB	5.41	120.34	110.60
1	A	61	LEU	CB-CG-CD2	-5.41	101.81	111.00
1	B	45	ARG	NE-CZ-NH1	5.38	122.99	120.30
1	C	57	MET	CG-SD-CE	5.37	108.79	100.20
1	B	20	LYS	CB-CA-C	-5.36	99.69	110.40
1	C	64	ASP	N-CA-CB	-5.34	100.99	110.60
1	A	82	GLU	CG-CD-OE1	5.33	128.95	118.30
1	B	25	THR	O-C-N	5.32	131.21	122.70

Continued on next page...

Continued from previous page...

Mol	Chain	Res	Type	Atoms	Z	Observed(°)	Ideal(°)
1	A	84	CYS	N-CA-CB	5.27	120.09	110.60
1	B	55	ARG	CD-NE-CZ	5.26	130.97	123.60
1	A	81	TYR	CG-CD1-CE1	-5.21	117.13	121.30
1	A	15	LEU	N-CA-CB	-5.19	100.01	110.40
1	C	22	GLY	N-CA-C	5.19	126.07	113.10
1	A	16	VAL	CA-CB-CG1	-5.19	103.12	110.90
1	C	83	VAL	CG1-CB-CG2	5.18	119.20	110.90
1	A	17	ALA	O-C-N	5.16	130.96	122.70
1	B	61	LEU	C-N-CD	5.12	139.16	128.40
1	C	20	LYS	CD-CE-NZ	-5.11	99.94	111.70
1	C	82	GLU	OE1-CD-OE2	-5.10	117.18	123.30
1	A	81	TYR	CB-CG-CD2	-5.09	117.94	121.00
1	B	67	LEU	CA-CB-CG	-5.08	103.63	115.30
1	B	27	VAL	N-CA-C	-5.07	97.31	111.00
1	A	16	VAL	O-C-N	5.06	130.80	122.70
1	A	67	LEU	N-CA-CB	5.04	120.47	110.40
1	A	19	ASN	CA-C-O	-5.03	109.53	120.10
1	A	85	TYR	O-C-N	-5.01	114.68	122.70

There are no chirality outliers.

All (3) planarity outliers are listed below:

Mol	Chain	Res	Type	Group
1	A	31	GLN	Peptide
1	A	94	ASN	Peptide
1	B	33	CYS	Peptide

5.2 Close contacts ⓘ

In the following table, the Non-H and H(model) columns list the number of non-hydrogen atoms and hydrogen atoms in the chain respectively. The H(added) column lists the number of hydrogens added by MolProbity. The Clashes column lists the number of clashes within the asymmetric unit, and the number in parentheses is this value normalized per 1000 atoms of the molecule in the chain. The Symm-Clashes column gives symmetry related clashes, in the same way as for the Clashes column.

Mol	Chain	Non-H	H(model)	H(added)	Clashes	Symm-Clashes
1	A	670	0	619	46	0
1	B	604	0	561	62	0
1	C	621	0	574	40	0
2	A	28	0	26	0	0

Continued on next page...

Continued from previous page...

Mol	Chain	Non-H	H(model)	H(added)	Clashes	Symm-Clashes
2	B	14	0	13	1	0
2	C	14	0	13	0	0
3	C	28	0	26	0	0
4	A	13	0	0	3	0
4	B	11	0	0	1	0
4	C	4	0	0	0	0
All	All	2007	0	1832	133	0

Clashscore is defined as the number of clashes calculated for the entry per 1000 atoms (including hydrogens) of the entry. The overall clashscore for this entry is 35.

All (133) close contacts within the same asymmetric unit are listed below.

Atom-1	Atom-2	Distance(Å)	Clash(Å)
1:A:86:ARG:HH22	1:A:94:ASN:CB	1.76	0.97
1:A:30:LYS:CB	1:A:30:LYS:NZ	2.19	0.96
1:A:30:LYS:HZ3	1:A:30:LYS:CB	1.82	0.93
1:C:88:ASN:HD22	1:C:88:ASN:N	1.67	0.92
1:A:86:ARG:NH2	1:A:94:ASN:CB	2.34	0.90
1:C:88:ASN:H	1:C:88:ASN:HD22	0.91	0.90
1:C:88:ASN:H	1:C:88:ASN:ND2	1.71	0.88
1:A:91:ASP:OD1	1:B:20:LYS:HE2	1.74	0.87
1:B:37:THR:O	1:B:37:THR:HG22	1.81	0.80
1:A:88:ASN:ND2	1:A:92:LYS:O	2.15	0.79
1:B:71:SER:CB	1:B:76:ILE:HD13	2.12	0.79
1:A:30:LYS:HB2	1:A:30:LYS:NZ	1.98	0.78
1:A:30:LYS:HZ3	1:A:30:LYS:HB2	1.49	0.78
1:A:8:ASP:O	1:A:9:LEU:O	2.02	0.77
1:C:59:ALA:O	1:C:60:ASN:HB2	1.83	0.77
1:B:36:THR:HB	1:B:37:THR:HB	1.66	0.77
1:B:71:SER:HB2	1:B:76:ILE:HD13	1.66	0.76
1:C:78:LYS:C	1:C:79:GLU:HG2	2.06	0.75
1:B:52:GLU:CD	1:B:52:GLU:H	1.93	0.72
1:C:78:LYS:CB	1:C:78:LYS:NZ	2.52	0.72
1:A:31:GLN:HG2	4:A:102:HOH:O	1.89	0.72
1:B:52:GLU:N	1:B:52:GLU:OE1	2.22	0.68
1:C:19:ASN:C	1:C:19:ASN:OD1	2.32	0.68
1:B:81:TYR:C	1:B:81:TYR:CD2	2.65	0.67
1:B:69:GLN:HG3	1:B:78:LYS:HD3	1.75	0.67
1:B:66:PRO:HA	1:B:81:TYR:HA	1.78	0.66
1:B:81:TYR:HD2	1:B:82:GLU:N	1.94	0.66
1:C:63:TYR:O	1:C:83:VAL:HA	1.96	0.65
1:A:18:GLU:HA	1:A:23:TYR:O	1.97	0.64

Continued on next page...

Continued from previous page...

Atom-1	Atom-2	Distance(Å)	Clash(Å)
1:B:54:LEU:O	1:B:86:ARG:HD3	1.98	0.63
1:A:30:LYS:HZ3	1:A:30:LYS:HB3	1.65	0.62
1:B:71:SER:HB2	1:B:76:ILE:CD1	2.30	0.62
1:B:36:THR:CB	1:B:37:THR:HB	2.30	0.62
1:C:78:LYS:HZ3	1:C:78:LYS:HB3	1.63	0.61
1:C:65:CYS:O	1:C:81:TYR:HA	2.00	0.61
1:C:54:LEU:HG	1:C:54:LEU:O	2.00	0.61
1:A:91:ASP:OD1	1:B:20:LYS:CE	2.49	0.61
1:B:33:CYS:O	1:B:34:ASN:HB2	1.99	0.61
1:B:81:TYR:CD2	1:B:82:GLU:N	2.69	0.60
1:C:86:ARG:NH1	1:C:86:ARG:HG2	2.15	0.60
1:C:78:LYS:O	1:C:79:GLU:HG2	2.01	0.60
1:B:49:ILE:O	1:B:53:GLY:HA3	2.01	0.60
1:A:82:GLU:HG2	1:A:83:VAL:N	2.15	0.60
1:B:78:LYS:O	1:B:79:GLU:HB2	2.02	0.60
1:A:15:LEU:C	1:A:16:VAL:HG13	2.21	0.59
1:B:69:GLN:HG3	1:B:78:LYS:CD	2.33	0.59
1:B:87:ARG:HH22	1:C:20:LYS:CD	2.17	0.58
1:B:87:ARG:NH2	1:C:20:LYS:HD2	2.18	0.58
1:A:30:LYS:HB3	1:A:30:LYS:NZ	2.15	0.58
1:C:45:ARG:HG3	1:C:45:ARG:HH11	1.68	0.57
1:C:78:LYS:HB2	1:C:78:LYS:NZ	2.20	0.57
1:A:89:TRP:CZ3	1:A:90:ARG:HD3	2.41	0.56
1:C:78:LYS:HZ2	1:C:78:LYS:HB2	1.71	0.56
1:B:87:ARG:HH22	1:C:20:LYS:CE	2.19	0.56
1:B:11:GLY:HA2	1:B:38:GLU:OE1	2.06	0.55
1:B:87:ARG:HD2	1:B:89:TRP:CZ2	2.42	0.54
1:B:11:GLY:HA2	1:B:12:CYS:C	2.28	0.54
1:B:20:LYS:O	1:B:20:LYS:HG3	2.06	0.54
1:B:87:ARG:HH22	1:C:20:LYS:HD2	1.71	0.54
1:B:36:THR:HA	1:B:37:THR:CB	2.37	0.54
1:C:15:LEU:HD12	1:C:51:ASP:OD1	2.08	0.54
1:A:86:ARG:NH1	1:A:88:ASN:OD1	2.41	0.54
1:B:37:THR:O	1:B:37:THR:CG2	2.53	0.54
1:C:86:ARG:HG2	1:C:86:ARG:HH11	1.72	0.53
1:B:20:LYS:HA	1:B:85:TYR:CE2	2.45	0.52
1:A:89:TRP:CH2	1:A:90:ARG:HD3	2.44	0.52
1:C:45:ARG:HG3	1:C:45:ARG:NH1	2.25	0.52
1:C:78:LYS:HZ3	1:C:78:LYS:CB	2.19	0.52
1:C:78:LYS:C	1:C:79:GLU:CG	2.75	0.52
1:A:16:VAL:HG12	1:A:26:ILE:HA	1.91	0.52
1:B:33:CYS:O	1:B:34:ASN:CB	2.58	0.51

Continued on next page...

Continued from previous page...

Atom-1	Atom-2	Distance(Å)	Clash(Å)
1:B:87:ARG:NH2	1:C:20:LYS:CD	2.74	0.51
1:C:19:ASN:OD1	1:C:20:LYS:N	2.45	0.50
1:A:82:GLU:CG	1:A:83:VAL:N	2.74	0.50
1:B:81:TYR:HB3	4:B:106:HOH:O	2.11	0.49
1:B:17:ALA:O	1:B:24:PRO:HA	2.13	0.49
1:A:78:LYS:C	1:A:80:THR:H	2.14	0.49
1:C:78:LYS:O	1:C:78:LYS:HG3	2.11	0.48
1:A:25:THR:OG1	1:A:45:ARG:NH1	2.46	0.48
1:C:8:ASP:C	1:C:10:GLY:H	2.16	0.48
1:C:20:LYS:C	1:C:22:GLY:H	2.17	0.48
1:C:25:THR:HB	1:C:47:PHE:CE2	2.49	0.48
1:B:71:SER:HB3	1:B:76:ILE:HD13	1.92	0.47
1:A:10:GLY:HA2	1:B:56:ARG:NH1	2.29	0.47
1:B:77:PRO:O	1:B:78:LYS:HG3	2.15	0.47
4:A:110:HOH:O	1:B:62:PRO:HG3	2.13	0.47
1:A:8:ASP:C	1:A:9:LEU:O	2.51	0.47
1:B:63:TYR:O	1:B:83:VAL:HA	2.14	0.47
1:A:54:LEU:CD1	1:A:86:ARG:HD3	2.44	0.47
1:A:25:THR:HG22	1:A:26:ILE:O	2.15	0.46
1:B:46:CYS:SG	1:B:70:CYS:SG	3.13	0.46
1:A:78:LYS:HB3	1:A:78:LYS:HE2	1.72	0.46
1:A:54:LEU:HD11	1:A:86:ARG:HD3	1.98	0.46
1:B:52:GLU:CD	1:B:52:GLU:N	2.64	0.46
1:A:10:GLY:HA2	1:B:56:ARG:NH2	2.30	0.45
1:C:12:CYS:HB2	1:C:13:PRO:CD	2.46	0.45
1:C:88:ASN:ND2	1:C:88:ASN:N	2.42	0.45
1:B:87:ARG:HH22	1:C:20:LYS:NZ	2.15	0.45
1:C:8:ASP:C	1:C:10:GLY:N	2.69	0.45
1:B:11:GLY:HA2	1:B:12:CYS:O	2.17	0.45
1:A:20:LYS:NZ	4:A:104:HOH:O	2.51	0.44
1:A:78:LYS:O	1:A:80:THR:N	2.51	0.44
1:B:19:ASN:HB2	1:B:20:LYS:H	1.63	0.44
1:B:78:LYS:HE3	1:B:78:LYS:HB3	1.84	0.44
1:B:11:GLY:CA	1:B:12:CYS:C	2.86	0.44
1:A:49:ILE:HD12	1:A:49:ILE:HG21	1.62	0.44
1:B:25:THR:HG23	1:B:45:ARG:HG2	2.00	0.43
1:B:36:THR:HA	1:B:37:THR:OG1	2.19	0.43
1:B:36:THR:CA	1:B:37:THR:HB	2.49	0.43
1:A:78:LYS:O	1:A:79:GLU:HB2	2.18	0.43
1:A:9:LEU:HA	1:B:56:ARG:HH22	1.84	0.42
1:B:25:THR:HG22	1:B:46:CYS:HA	2.01	0.42
1:B:67:LEU:HA	1:B:67:LEU:HD23	1.86	0.42

Continued on next page...

Continued from previous page...

Atom-1	Atom-2	Distance(Å)	Clash(Å)
1:A:20:LYS:HA	1:A:85:TYR:CE2	2.54	0.42
1:C:49:ILE:HG21	1:C:49:ILE:HD13	1.73	0.42
2:B:119:NAG:C8	2:B:119:NAG:H3	2.49	0.42
1:C:87:ARG:NH1	1:C:89:TRP:HZ3	2.18	0.42
1:C:80:THR:C	1:C:81:TYR:CD2	2.93	0.42
1:A:29:CYS:C	1:A:30:LYS:HG2	2.40	0.42
1:B:65:CYS:HA	1:B:66:PRO:HD2	1.93	0.41
1:A:72:ASN:CG	1:A:72:ASN:O	2.58	0.41
1:B:36:THR:CA	1:B:37:THR:CB	2.98	0.41
1:A:10:GLY:HA2	1:B:56:ARG:HH22	1.85	0.41
1:A:14:PHE:HA	1:A:31:GLN:OE1	2.21	0.41
1:A:49:ILE:HG23	1:A:49:ILE:HD13	1.56	0.41
1:A:89:TRP:CE3	1:A:90:ARG:HB2	2.56	0.41
1:A:58:THR:O	1:A:59:ALA:C	2.58	0.41
1:A:88:ASN:O	1:B:20:LYS:HD2	2.20	0.41
1:C:52:GLU:O	1:C:53:GLY:C	2.59	0.41
1:B:85:TYR:CD2	1:B:85:TYR:N	2.88	0.40
1:A:10:GLY:HA2	1:B:56:ARG:HH12	1.84	0.40
1:B:89:TRP:CE2	1:C:85:TYR:CE1	3.09	0.40
1:A:89:TRP:CH2	1:B:87:ARG:NH2	2.89	0.40

There are no symmetry-related clashes.

5.3 Torsion angles

5.3.1 Protein backbone ⓘ

In the following table, the Percentiles column shows the percent Ramachandran outliers of the chain as a percentile score with respect to all X-ray entries followed by that with respect to entries of similar resolution. The Analysed column shows the number of residues for which the backbone conformation was analysed, and the total number of residues.

Mol	Chain	Analysed	Favoured	Allowed	Outliers	Percentiles	
1	A	86/100 (86%)	75 (87%)	10 (12%)	1 (1%)	19	45
1	B	77/100 (77%)	66 (86%)	7 (9%)	4 (5%)	3	5
1	C	80/100 (80%)	71 (89%)	7 (9%)	2 (2%)	9	21
All	All	243/300 (81%)	212 (87%)	24 (10%)	7 (3%)	7	16

All (7) Ramachandran outliers are listed below:

Mol	Chain	Res	Type
1	A	9	LEU
1	B	37	THR
1	B	72	ASN
1	C	21	THR
1	B	34	ASN
1	C	22	GLY
1	B	60	ASN

5.3.2 Protein sidechains ⓘ

In the following table, the Percentiles column shows the percent sidechain outliers of the chain as a percentile score with respect to all X-ray entries followed by that with respect to entries of similar resolution. The Analysed column shows the number of residues for which the sidechain conformation was analysed, and the total number of residues.

Mol	Chain	Analysed	Rotameric	Outliers	Percentiles	
1	A	73/86 (85%)	60 (82%)	13 (18%)	2	7
1	B	67/86 (78%)	55 (82%)	12 (18%)	2	7
1	C	68/86 (79%)	56 (82%)	12 (18%)	3	7
All	All	208/258 (81%)	171 (82%)	37 (18%)	2	7

All (37) residues with a non-rotameric sidechain are listed below:

Mol	Chain	Res	Type
1	A	27	VAL
1	A	30	LYS
1	A	31	GLN
1	A	32	ASP
1	A	34	ASN
1	A	37	THR
1	A	49	ILE
1	A	61	LEU
1	A	67	LEU
1	A	84	CYS
1	A	88	ASN
1	A	90	ARG
1	A	92	LYS
1	B	12	CYS
1	B	20	LYS
1	B	27	VAL
1	B	29	CYS

Continued on next page...

Continued from previous page...

Mol	Chain	Res	Type
1	B	32	ASP
1	B	38	GLU
1	B	49	ILE
1	B	52	GLU
1	B	71	SER
1	B	79	GLU
1	B	80	THR
1	B	87	ARG
1	C	27	VAL
1	C	52	GLU
1	C	56	ARG
1	C	71	SER
1	C	74	ASP
1	C	75	CYS
1	C	78	LYS
1	C	79	GLU
1	C	82	GLU
1	C	84	CYS
1	C	88	ASN
1	C	89	TRP

Some sidechains can be flipped to improve hydrogen bonding and reduce clashes. All (4) such sidechains are listed below:

Mol	Chain	Res	Type
1	A	34	ASN
1	B	69	GLN
1	C	31	GLN
1	C	88	ASN

5.3.3 RNA ⓘ

There are no RNA chains in this entry.

5.4 Non-standard residues in protein, DNA, RNA chains ⓘ

There are no non-standard protein/DNA/RNA residues in this entry.

5.5 Carbohydrates ⓘ

There are no carbohydrates in this entry.

5.6 Ligand geometry

6 ligands are modelled in this entry.

In the following table, the Counts columns list the number of bonds (or angles) for which Mogul statistics could be retrieved, the number of bonds (or angles) that are observed in the model and the number of bonds (or angles) that are defined in the chemical component dictionary. The Link column lists molecule types, if any, to which the group is linked. The Z score for a bond length (or angle) is the number of standard deviations the observed value is removed from the expected value. A bond length (or angle) with $|Z| > 2$ is considered an outlier worth inspection. RMSZ is the root-mean-square of all Z scores of the bond lengths (or angles).

Mol	Type	Chain	Res	Link	Bond lengths			Bond angles		
					Counts	RMSZ	# $ Z > 2$	Counts	RMSZ	# $ Z > 2$
2	NAG	A	119	1	12,14,15	2.04	3 (25%)	15,19,21	1.75	5 (33%)
2	NAG	A	142	1	12,14,15	0.71	0	15,19,21	3.03	3 (20%)
2	NAG	B	119	1	12,14,15	1.82	3 (25%)	15,19,21	4.82	11 (73%)
3	NDG	C	119	1	12,14,15	1.35	1 (8%)	15,19,21	2.23	6 (40%)
3	NDG	C	134	1	12,14,15	1.51	2 (16%)	15,19,21	1.95	4 (26%)
2	NAG	C	142	1	12,14,15	1.23	1 (8%)	15,19,21	2.34	6 (40%)

In the following table, the Chirals column lists the number of chiral outliers, the number of chiral centers analysed, the number of these observed in the model and the number defined in the chemical component dictionary. Similar counts are reported in the Torsion and Rings columns. '-' means no outliers of that kind were identified.

Mol	Type	Chain	Res	Link	Chirals	Torsions	Rings
2	NAG	A	119	1	-	0/6/23/26	0/1/1/1
2	NAG	A	142	1	-	0/6/23/26	0/1/1/1
2	NAG	B	119	1	1/1/5/7	0/6/23/26	0/1/1/1
3	NDG	C	119	1	-	0/6/23/26	0/1/1/1
3	NDG	C	134	1	-	0/6/23/26	0/1/1/1
2	NAG	C	142	1	-	0/6/23/26	0/1/1/1

All (10) bond length outliers are listed below:

Mol	Chain	Res	Type	Atoms	Z	Observed(Å)	Ideal(Å)
2	A	119	NAG	C2-N2	4.59	1.51	1.46
3	C	119	NDG	C3-C2	3.75	1.60	1.52
2	B	119	NAG	C3-C2	3.66	1.60	1.52
2	B	119	NAG	C2-N2	3.59	1.50	1.46
2	A	119	NAG	O4-C4	3.01	1.50	1.43
3	C	134	NDG	C2-N2	2.93	1.49	1.46
2	C	142	NAG	C4-C5	2.78	1.59	1.53

Continued on next page...

Continued from previous page...

Mol	Chain	Res	Type	Atoms	Z	Observed(Å)	Ideal(Å)
3	C	134	NDG	C3-C2	2.52	1.57	1.52
2	B	119	NAG	C8-C7	2.29	1.55	1.50
2	A	119	NAG	C4-C5	2.10	1.57	1.53

All (35) bond angle outliers are listed below:

Mol	Chain	Res	Type	Atoms	Z	Observed(°)	Ideal(°)
2	A	142	NAG	O5-C5-C6	10.27	117.76	106.98
2	B	119	NAG	C2-N2-C7	9.87	139.67	123.09
2	B	119	NAG	O5-C5-C6	7.98	115.36	106.98
2	B	119	NAG	C8-C7-N2	6.72	129.25	116.11
2	B	119	NAG	O5-C5-C4	-6.61	102.27	110.65
2	C	142	NAG	O5-C5-C6	-5.46	101.25	106.98
2	B	119	NAG	O3-C3-C2	5.17	119.95	109.09
2	B	119	NAG	O7-C7-C8	-4.65	112.97	122.04
3	C	119	NDG	O3-C3-C2	4.62	118.79	109.09
3	C	134	NDG	O-C5-C6	4.40	111.60	106.98
3	C	119	NDG	C2-N2-C7	-4.17	116.09	123.09
2	C	142	NAG	O3-C3-C2	-4.15	100.36	109.09
2	A	142	NAG	C3-C4-C5	-3.67	103.65	110.20
2	B	119	NAG	C6-C5-C4	3.48	121.41	113.00
2	B	119	NAG	O6-C6-C5	-3.38	99.74	111.36
2	A	119	NAG	C3-C2-N2	3.33	116.83	111.76
3	C	119	NDG	O4-C4-C5	3.26	117.87	109.28
3	C	119	NDG	O3-C3-C4	-2.95	103.74	110.35
2	C	142	NAG	C3-C4-C5	2.95	115.47	110.20
3	C	134	NDG	C2-N2-C7	2.89	127.94	123.09
2	B	119	NAG	C4-C3-C2	2.87	118.33	111.32
3	C	134	NDG	C3-C4-C5	2.86	115.32	110.20
3	C	134	NDG	C4-C3-C2	2.78	118.12	111.32
2	A	119	NAG	O4-C4-C3	2.61	116.21	110.35
2	A	119	NAG	O4-C4-C5	2.55	116.01	109.28
2	A	142	NAG	O4-C4-C5	2.53	115.95	109.28
2	B	119	NAG	O4-C4-C3	-2.51	104.73	110.35
2	A	119	NAG	O7-C7-C8	-2.49	117.19	122.04
2	C	142	NAG	O4-C4-C5	2.48	115.83	109.28
2	A	119	NAG	O6-C6-C5	2.43	119.71	111.36
2	C	142	NAG	O3-C3-C4	-2.22	105.37	110.35
2	B	119	NAG	O4-C4-C5	2.22	115.12	109.28
2	C	142	NAG	C4-C3-C2	2.05	116.33	111.32
3	C	119	NDG	C3-C2-N2	2.04	114.86	111.76
3	C	119	NDG	O7-C7-C8	2.01	125.97	122.04

All (1) chirality outliers are listed below:

Mol	Chain	Res	Type	Atom
2	B	119	NAG	C1

There are no torsion outliers.

There are no ring outliers.

5.7 Other polymers ⓘ

There are no such residues in this entry.

5.8 Polymer linkage issues

There are no chain breaks in this entry.

6 Fit of model and data ⓘ

6.1 Protein, DNA and RNA chains ⓘ

In the following table, the column labelled ‘#RSRZ> 2’ contains the number (and percentage) of RSRZ outliers, followed by percent RSRZ outliers for the chain as percentile scores relative to all X-ray entries and entries of similar resolution. The OWAB column contains the minimum, median, 95th percentile and maximum values of the occupancy-weighted average B-factor per residue. The column labelled ‘Q< 0.9’ lists the number of (and percentage) of residues with an average occupancy less than 0.9.

Mol	Chain	Analysed	<RSRZ>	#RSRZ>2		OWAB(Å ²)	Q<0.9
1	A	88/100 (88%)	0.07	4 (4%)	32 36	34, 51, 83, 99	0
1	B	79/100 (79%)	0.37	6 (7%)	14 14	36, 57, 95, 107	0
1	C	82/100 (82%)	0.11	3 (3%)	39 44	40, 56, 77, 99	0
All	All	249/300 (83%)	0.17	13 (5%)	24 29	34, 54, 88, 107	0

All (13) RSRZ outliers are listed below:

Mol	Chain	Res	Type	RSRZ
1	C	89	TRP	4.1
1	B	36	THR	4.1
1	B	34	ASN	3.9
1	C	23	TYR	3.3
1	B	35	GLY	3.2
1	A	8	ASP	3.0
1	B	33	CYS	3.0
1	B	72	ASN	2.9
1	C	55	ARG	2.6
1	A	92	LYS	2.4
1	A	93	LYS	2.4
1	A	95	HIS	2.2
1	B	32	ASP	2.1

6.2 Non-standard residues in protein, DNA, RNA chains ⓘ

There are no non-standard protein/DNA/RNA residues in this entry.

6.3 Carbohydrates ⓘ

There are no carbohydrates in this entry.

6.4 Ligands

In the following table, the Atoms column lists the number of modelled atoms in the group and the number defined in the chemical component dictionary. LLDF column lists the quality of electron density of the group with respect to its neighbouring residues in protein, DNA or RNA chains. The B-factors column lists the minimum, median, 95th percentile and maximum values of B factors of atoms in the group. The column labelled 'Q< 0.9' lists the number of atoms with occupancy less than 0.9.

Mol	Type	Chain	Res	Atoms	RSR	LLDF	B-factors(Å ²)	Q<0.9
2	NAG	C	142	14/15	0.39	11.46	82,91,97,98	0
3	NDG	C	134	14/15	0.60	9.07	98,108,113,114	0
2	NAG	B	119	14/15	0.22	2.31	70,81,88,90	0
3	NDG	C	119	14/15	0.30	1.33	63,79,86,86	0
2	NAG	A	142	14/15	0.27	0.73	78,88,92,96	0
2	NAG	A	119	14/15	0.20	-0.29	61,67,70,70	0

6.5 Other polymers

There are no such residues in this entry.