



# Full wwPDB X-ray Structure Validation Report

Feb 28, 2014 – 01:20 AM GMT

PDB ID : 2FS4  
Title : Ketopiperazine-Based Renin Inhibitors: Optimization of the C ring  
Authors : Holsworth, D.D.; Cai, C.; Cheng, X.-M.; Cody, W.L.; Downing, D.M.; Erasga, N.; Lee, C.; Powell, N.A.; Edmunds, J.J.; Stier, M.; Jalaie, M.; Zhang, E.; McConnell, P.; Ryan, M.J.; Bryant, J.; Li, T.; Kasani, A.; Hall, E.; Subedi, R.; Rahim, M.; Maiti, S.  
Deposited on : 2006-01-20  
Resolution : 2.20 Å(reported)

This is a full wwPDB validation report for a publicly released PDB entry.  
We welcome your comments at [validation@mail.wwpdb.org](mailto:validation@mail.wwpdb.org)  
A user guide is available at <http://wwpdb.org/ValidationPDFNotes.html>

---

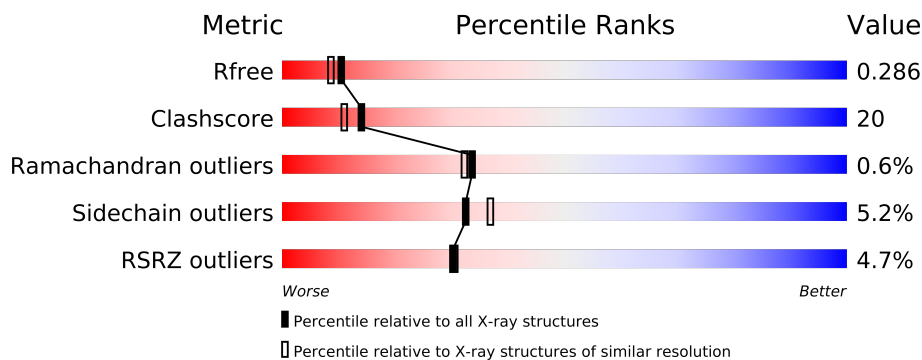
The following versions of software and data (see [references](#)) were used in the production of this report:

MolProbity : 4.02b-467  
Mogul : 1.15 2013  
Xtriage (Phenix) : dev-1323  
EDS : stable22639  
Percentile statistics : 21963  
Refmac : 5.8.0049  
CCP4 : 6.3.0 (Settle)  
Ideal geometry (proteins) : Engh & Huber (2001)  
Ideal geometry (DNA, RNA) : Parkinson et. al. (1996)  
Validation Pipeline (wwPDB-VP) : stable22683

# 1 Overall quality at a glance

The reported resolution of this entry is 2.20 Å.

Percentile scores (ranging between 0-100) for global validation metrics of the entry are shown in the following graphic. The table shows the number of entries on which the scores are based.



Metric	Whole archive (#Entries)	Similar resolution (#Entries, resolution range(Å))
$R_{free}$	66092	2938 (2.20-2.20)
Clashscore	79885	3751 (2.20-2.20)
Ramachandran outliers	78287	3681 (2.20-2.20)
Sidechain outliers	78261	3682 (2.20-2.20)
RSRZ outliers	66119	2939 (2.20-2.20)

The table below summarises the geometric issues observed across the polymeric chains and their fit to the electron density. The red, orange, yellow and green segments on the lower bar indicate the fraction of residues that contain outliers for  $\geq 3$ , 2, 1 and 0 types of geometric quality criteria. The upper red bar (where present) indicates the fraction of residues that have poor fit to the electron density.

Mol	Chain	Length	Quality of chain
1	A	333	
1	B	333	

## 2 Entry composition i

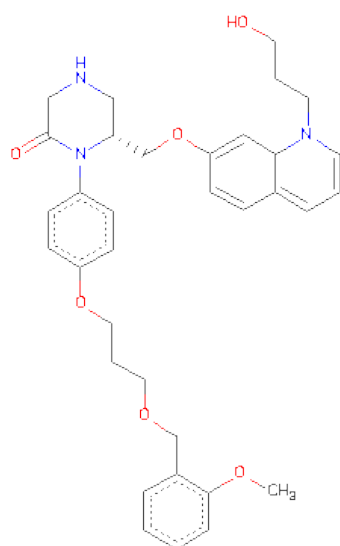
There are 3 unique types of molecules in this entry. The entry contains 5292 atoms, of which 0 are hydrogen and 0 are deuterium.

In the tables below, the ZeroOcc column contains the number of atoms modelled with zero occupancy, the AltConf column contains the number of residues with at least one atom in alternate conformation and the Trace column contains the number of residues modelled with at most 2 atoms.

- Molecule 1 is a protein called Renin.

Mol	Chain	Residues	Atoms					ZeroOcc	AltConf	Trace
1	A	329	Total	C	N	O	S	0	0	0
			2538	1625	410	489	14			
1	B	329	Total	C	N	O	S	0	0	0
			2539	1625	410	490	14			

- Molecule 2 is (6R)-6-({[1-(3-HYDROXYPROPYL)-1,7-DIHYDROQUINOLIN-7-YL]OXY} METHYL)-1-(4-{3-[(2-METHOXYBENZYL)OXY]PROPOXY}PHENYL)PIPERAZIN-2-ONE (three-letter code: PZ1) (formula: C<sub>34</sub>H<sub>41</sub>N<sub>3</sub>O<sub>6</sub>).



Mol	Chain	Residues	Atoms				ZeroOcc	AltConf
2	B	1	Total	C	N	O	0	0
			43	34	3	6		

- Molecule 3 is water.

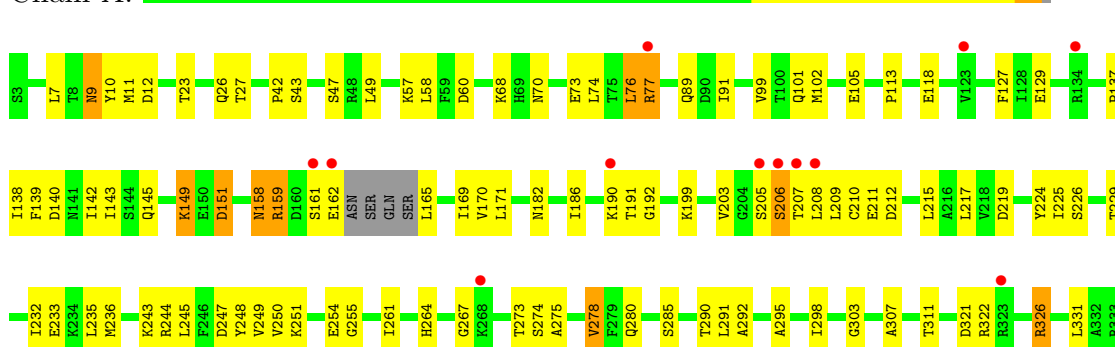
Mol	Chain	Residues	Atoms		ZeroOcc	AltConf
3	A	112	Total 112	O 112	0	0
3	B	60	Total 60	O 60	0	0

### 3 Residue-property plots

These plots are drawn for all protein, RNA and DNA chains in the entry. The first graphic for a chain summarises the proportions of errors displayed in the second graphic. The second graphic shows the sequence view annotated by issues in geometry and electron density. Residues are color-coded according to the number of geometric quality criteria for which they contain at least one outlier: green = 0, yellow = 1, orange = 2 and red = 3 or more. A red dot above a residue indicates a poor fit to the electron density ( $RSRZ > 2$ ). Stretches of 2 or more consecutive residues without any outlier are shown as a green connector. Residues present in the sample, but not in the model, are shown in grey.

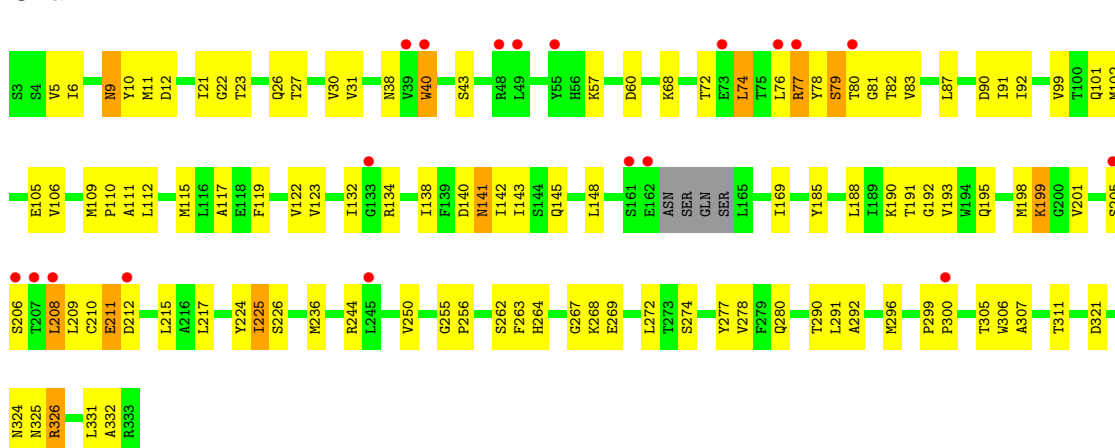
#### • Molecule 1: Renin

Chain A:



#### • Molecule 1: Renin

Chain B:



## 4 Data and refinement statistics

Property	Value	Source
Space group	P 21 3	Depositor
Cell constants a, b, c, $\alpha$ , $\beta$ , $\gamma$	141.92Å 141.92Å 141.92Å 90.00° 90.00° 90.00°	Depositor
Resolution (Å)	25.00 – 2.20 24.34 – 2.20	Depositor EDS
% Data completeness (in resolution range)	(Not available) (25.00-2.20) 91.3 (24.34-2.20)	Depositor EDS
$R_{merge}$	(Not available)	Depositor
$R_{sym}$	(Not available)	Depositor
$\langle I/\sigma(I) \rangle$ <sup>1</sup>	3.37 (at 2.19Å)	Xtriage
Refinement program	CNS	Depositor
R, $R_{free}$	0.243 , 0.284 0.244 , 0.286	Depositor DCC
$R_{free}$ test set	4455 reflections (10.06%)	DCC
Wilson B-factor (Å <sup>2</sup> )	30.2	Xtriage
Anisotropy	0.000	Xtriage
Bulk solvent $k_{sol}$ (e/Å <sup>3</sup> ), $B_{sol}$ (Å <sup>2</sup> )	0.36 , 37.9	EDS
Estimated twinning fraction	0.030 for l,-k,h	Xtriage
L-test for twinning	$\langle  L  \rangle = 0.50$ , $\langle L^2 \rangle = 0.33$	Xtriage
Outliers	0 of 47570 reflections	Xtriage
$F_o, F_c$ correlation	0.92	EDS
Total number of atoms	5292	wwPDB-VP
Average B, all atoms (Å <sup>2</sup> )	38.0	wwPDB-VP

Xtriage's analysis on translational NCS is as follows: *The largest off-origin peak in the Patterson function is 1.98% of the height of the origin peak. No significant pseudotranslation is detected.*

<sup>1</sup>Intensities estimated from amplitudes.

## 5 Model quality

### 5.1 Standard geometry

Bond lengths and bond angles in the following residue types are not validated in this section: PZ1

The Z score for a bond length (or angle) is the number of standard deviations the observed value is removed from the expected value. A bond length (or angle) with  $|Z| > 5$  is considered an outlier worth inspection. RMSZ is the root-mean-square of all Z scores of the bond lengths (or angles).

Mol	Chain	Bond lengths		Bond angles	
		RMSZ	$\# Z  > 5$	RMSZ	$\# Z  > 5$
1	A	0.34	0/2597	0.67	0/3521
1	B	0.32	0/2598	0.65	1/3521 (0.0%)
All	All	0.33	0/5195	0.66	1/7042 (0.0%)

There are no bond length outliers.

All (1) bond angle outliers are listed below:

Mol	Chain	Res	Type	Atoms	Z	Observed(°)	Ideal(°)
1	B	225	ILE	N-CA-C	-5.30	96.70	111.00

There are no chirality outliers.

There are no planarity outliers.

### 5.2 Close contacts

In the following table, the Non-H and H(model) columns list the number of non-hydrogen atoms and hydrogen atoms in the chain respectively. The H(added) column lists the number of hydrogens added by MolProbity. The Clashes column lists the number of clashes within the asymmetric unit, and the number in parentheses is this value normalized per 1000 atoms of the molecule in the chain. The Symm-Clashes column gives symmetry related clashes, in the same way as for the Clashes column.

Mol	Chain	Non-H	H(model)	H(added)	Clashes	Symm-Clashes
1	A	2538	0	2472	89	0
1	B	2539	0	2472	111	0
2	B	43	0	40	8	0
3	A	112	0	0	5	0
3	B	60	0	0	3	0
All	All	5292	0	4984	200	0

Clashscore is defined as the number of clashes calculated for the entry per 1000 atoms (including hydrogens) of the entry. The overall clashscore for this entry is 20.

All (200) close contacts within the same asymmetric unit are listed below.

Atom-1	Atom-2	Distance(Å)	Clash(Å)
1:A:77:ARG:HD3	1:A:77:ARG:H	1.29	0.93
1:B:324:ASN:HB2	1:B:326:ARG:HD2	1.49	0.92
1:A:26:GLN:HE22	1:A:60:ASP:H	1.17	0.92
1:B:26:GLN:HE22	1:B:60:ASP:H	1.24	0.85
1:A:158:ASN:ND2	1:A:159:ARG:H	1.75	0.85
1:B:198:MET:CE	1:B:201:VAL:HG22	2.09	0.83
1:B:198:MET:HE1	1:B:201:VAL:HG22	1.62	0.82
1:A:149:LYS:HA	1:A:149:LYS:HE3	1.61	0.81
1:A:158:ASN:HD22	1:A:159:ARG:H	1.27	0.79
1:A:274:SER:O	1:A:278:VAL:HG13	1.84	0.78
1:B:305:THR:HG22	1:B:306:TRP:O	1.84	0.77
1:B:43:SER:HB2	1:B:105:GLU:HB3	1.65	0.77
1:A:9:ASN:HD21	1:A:12:ASP:H	1.30	0.77
1:B:199:LYS:HE2	1:B:267:GLY:H	1.49	0.77
1:B:290:THR:HG21	3:B:851:HOH:O	1.84	0.76
1:B:9:ASN:HD21	1:B:12:ASP:H	1.35	0.74
1:B:211:GLU:O	1:B:212:ASP:HB2	1.88	0.74
1:B:5:VAL:CG1	1:B:169:ILE:HB	2.19	0.72
1:B:106:VAL:HG21	2:B:805:PZ1:H332	1.73	0.70
1:A:70:ASN:HB2	1:A:102:MET:HE1	1.72	0.70
1:B:101:GLN:NE2	1:B:138:ILE:HA	2.07	0.69
1:A:244:ARG:HD3	1:A:247:ASP:OD2	1.92	0.69
1:B:9:ASN:HD22	1:B:10:TYR:N	1.88	0.69
1:A:9:ASN:C	1:A:9:ASN:HD22	1.96	0.68
1:B:9:ASN:HD22	1:B:9:ASN:C	1.98	0.67
1:A:27:THR:HG22	3:A:405:HOH:O	1.94	0.67
1:A:9:ASN:HD22	1:A:10:TYR:N	1.93	0.66
1:B:22:GLY:HA2	1:B:90:ASP:OD1	1.96	0.66
1:B:321:ASP:HB3	1:B:326:ARG:HG2	1.77	0.65
1:A:273:THR:HG21	3:A:424:HOH:O	1.95	0.65
1:B:101:GLN:HE22	1:B:138:ILE:HA	1.60	0.65
1:A:229:THR:O	1:A:233:GLU:HG2	1.96	0.64
1:A:208:LEU:HD12	1:A:209:LEU:HG	1.79	0.64
1:A:273:THR:HG22	1:A:275:ALA:H	1.63	0.63
1:B:225:ILE:HG13	1:B:311:THR:HB	1.80	0.63
1:A:77:ARG:HD3	1:A:77:ARG:N	2.08	0.62
1:A:158:ASN:HD22	1:A:159:ARG:N	1.97	0.62
1:B:255:GLY:HA3	1:B:280:GLN:HE22	1.64	0.62
1:A:9:ASN:HD21	1:A:12:ASP:N	1.99	0.61

*Continued on next page...*

*Continued from previous page...*

Atom-1	Atom-2	Distance(Å)	Clash(Å)
1:A:217:LEU:HD13	1:A:219:ASP:HB2	1.83	0.61
1:A:158:ASN:ND2	1:A:159:ARG:N	2.47	0.60
1:B:117:ALA:HB3	2:B:805:PZ1:H5	1.84	0.59
1:B:199:LYS:HB2	1:B:264:HIS:CD2	2.38	0.59
1:A:99:VAL:HG12	1:A:145:GLN:OE1	2.01	0.59
1:A:190:LYS:HG3	1:A:191:THR:O	2.02	0.59
1:A:9:ASN:ND2	1:A:12:ASP:H	2.01	0.58
1:A:101:GLN:NE2	1:A:138:ILE:HA	2.19	0.58
1:B:198:MET:HE2	1:B:201:VAL:HG22	1.86	0.57
1:A:321:ASP:OD1	1:A:326:ARG:HD2	2.03	0.57
1:A:77:ARG:O	1:A:77:ARG:HG2	2.05	0.57
1:B:9:ASN:ND2	1:B:9:ASN:C	2.58	0.57
1:B:290:THR:HG22	1:B:291:LEU:N	2.20	0.57
1:B:198:MET:HE1	1:B:263:PHE:HD2	1.70	0.56
1:B:38:ASN:OD1	1:B:132:ILE:HD13	2.06	0.56
1:B:72:THR:HB	1:B:87:LEU:HD12	1.88	0.56
1:B:27:THR:O	1:B:57:LYS:HD3	2.05	0.56
1:B:99:VAL:HG21	1:B:141:ASN:HB3	1.87	0.56
1:A:251:LYS:NZ	1:A:285:SER:HB2	2.21	0.56
1:A:101:GLN:HE22	1:A:138:ILE:HA	1.71	0.56
1:B:324:ASN:CB	1:B:326:ARG:HD2	2.28	0.55
1:A:251:LYS:HZ1	1:A:285:SER:HB2	1.72	0.55
1:A:43:SER:HB2	1:A:105:GLU:HB3	1.88	0.55
1:A:273:THR:HG22	1:A:274:SER:N	2.22	0.55
1:B:321:ASP:OD1	1:B:326:ARG:HD3	2.06	0.54
1:A:225:ILE:HG13	1:A:311:THR:HB	1.89	0.54
1:A:255:GLY:HA3	1:A:280:GLN:HE22	1.72	0.54
1:A:298:ILE:O	1:A:303:GLY:HA3	2.07	0.54
1:A:9:ASN:ND2	1:A:9:ASN:C	2.61	0.54
1:A:244:ARG:HD2	1:A:249:VAL:HG13	1.90	0.54
1:A:211:GLU:CD	1:A:211:GLU:H	2.10	0.54
1:B:199:LYS:HE3	1:B:264:HIS:CD2	2.43	0.54
1:A:143:ILE:HD13	1:A:151:ASP:OD2	2.07	0.54
1:A:226:SER:OG	1:A:307:ALA:HB3	2.08	0.53
1:A:215:LEU:HD12	1:A:215:LEU:N	2.23	0.53
1:B:11:MET:O	1:B:12:ASP:HB2	2.08	0.53
1:B:211:GLU:H	1:B:211:GLU:CD	2.10	0.53
1:A:211:GLU:O	1:A:212:ASP:HB2	2.08	0.53
1:B:111:ALA:O	1:B:115:MET:HB2	2.09	0.53
1:B:111:ALA:HB1	1:B:115:MET:CE	2.39	0.53
1:B:21:ILE:HG12	1:B:92:ILE:HG12	1.89	0.53
1:A:27:THR:O	1:A:57:LYS:HG2	2.09	0.53

*Continued on next page...*

*Continued from previous page...*

Atom-1	Atom-2	Distance(Å)	Clash(Å)
1:A:99:VAL:HG11	1:A:142:ILE:HG12	1.90	0.52
1:A:161:SER:OG	1:A:162:GLU:N	2.42	0.52
1:B:5:VAL:HG12	1:B:169:ILE:HB	1.92	0.52
1:B:208:LEU:HD23	1:B:208:LEU:H	1.75	0.51
1:A:206:SER:O	1:A:208:LEU:HG	2.10	0.51
1:B:23:THR:OG1	1:B:91:ILE:HD11	2.10	0.51
1:A:273:THR:CG2	1:A:274:SER:N	2.74	0.51
1:B:185:TYR:CD2	1:B:326:ARG:HG3	2.46	0.51
1:A:10:TYR:CG	1:A:118:GLU:HG3	2.46	0.51
1:B:9:ASN:HD21	1:B:12:ASP:N	2.07	0.51
1:A:251:LYS:O	1:A:254:GLU:HG3	2.11	0.51
1:B:78:TYR:O	1:B:79:SER:O	2.28	0.51
1:B:79:SER:O	1:B:80:THR:C	2.50	0.50
1:B:208:LEU:CD2	1:B:208:LEU:H	2.23	0.50
1:A:264:HIS:HE1	1:A:267:GLY:HA2	1.77	0.50
1:B:206:SER:O	1:B:208:LEU:HD22	2.12	0.50
1:B:226:SER:HB2	1:B:296:MET:HB3	1.92	0.50
1:B:199:LYS:CE	1:B:267:GLY:H	2.21	0.50
1:B:250:VAL:HG23	3:B:821:HOH:O	2.11	0.50
1:B:305:THR:HG22	1:B:306:TRP:N	2.27	0.49
1:B:262:SER:HB3	1:B:269:GLU:OE1	2.12	0.49
1:A:10:TYR:CD1	1:A:118:GLU:HG3	2.47	0.49
1:B:122:VAL:HG23	2:B:805:PZ1:H1C3	1.94	0.49
1:B:191:THR:HG22	1:B:192:GLY:N	2.27	0.49
1:A:205:SER:O	1:A:206:SER:HB3	2.12	0.49
1:B:78:TYR:C	1:B:79:SER:O	2.50	0.49
1:B:198:MET:CE	1:B:263:PHE:HD2	2.25	0.49
1:B:331:LEU:HD13	1:B:331:LEU:C	2.34	0.48
1:B:215:LEU:HB2	1:B:305:THR:HG23	1.95	0.48
1:B:82:THR:O	1:B:110:PRO:HD3	2.14	0.48
1:A:47:SER:OG	1:A:49:LEU:HD23	2.13	0.48
1:A:186:ILE:HD12	1:A:186:ILE:N	2.29	0.48
1:B:199:LYS:HB2	1:B:264:HIS:HD2	1.78	0.48
1:A:232:ILE:HG13	1:A:295:ALA:HA	1.96	0.48
1:A:127:PHE:CB	1:A:192:GLY:HA2	2.44	0.48
1:B:226:SER:OG	1:B:307:ALA:HB3	2.13	0.48
1:B:278:VAL:HG22	1:B:291:LEU:HD22	1.96	0.47
1:B:143:ILE:HD13	1:B:148:LEU:HD12	1.97	0.47
1:A:127:PHE:HB2	1:A:192:GLY:HA2	1.96	0.47
1:A:159:ARG:HH11	1:A:159:ARG:HG2	1.79	0.47
1:A:68:LYS:HB2	1:A:89:GLN:HB3	1.97	0.47
1:A:199:LYS:HD2	1:A:264:HIS:CE1	2.50	0.47

*Continued on next page...*

*Continued from previous page...*

Atom-1	Atom-2	Distance(Å)	Clash(Å)
1:B:68:LYS:HE3	1:B:68:LYS:HB2	1.68	0.47
1:B:206:SER:O	1:B:208:LEU:N	2.48	0.46
1:B:191:THR:HG23	1:B:325:ASN:HD21	1.80	0.46
1:B:188:LEU:HG	1:B:325:ASN:O	2.16	0.46
1:A:203:VAL:HG22	1:A:261:ILE:HD12	1.97	0.46
1:B:224:TYR:HB3	1:B:292:ALA:O	2.16	0.46
1:B:119:PHE:CE2	2:B:805:PZ1:H1C2	2.50	0.46
1:B:80:THR:HG23	1:B:81:GLY:H	1.81	0.46
1:B:278:VAL:HG22	1:B:291:LEU:CD2	2.45	0.46
1:A:235:LEU:HD23	1:A:235:LEU:C	2.36	0.46
1:A:290:THR:HG22	1:A:291:LEU:N	2.31	0.45
1:B:268:LYS:HE2	1:B:268:LYS:HB3	1.73	0.45
1:B:201:VAL:HB	1:B:209:LEU:HB2	1.99	0.45
1:A:190:LYS:HD2	1:A:191:THR:H	1.82	0.45
1:A:23:THR:OG1	1:A:91:ILE:HD11	2.16	0.45
1:B:134:ARG:HB2	1:B:134:ARG:HH11	1.82	0.45
1:B:193:VAL:HG12	1:B:195:GLN:HB2	1.97	0.45
1:B:30:VAL:HG21	1:B:123:VAL:HG23	1.99	0.45
1:B:101:GLN:HG3	1:B:102:MET:N	2.32	0.44
1:B:82:THR:HG22	1:B:83:VAL:N	2.33	0.44
1:A:11:MET:O	1:A:12:ASP:HB2	2.17	0.44
1:B:119:PHE:CD1	1:B:119:PHE:N	2.85	0.44
1:A:244:ARG:HD2	1:A:249:VAL:CG1	2.48	0.44
1:A:137:PRO:HD2	1:A:140:ASP:OD2	2.17	0.44
1:A:151:ASP:O	1:A:322:ARG:HB2	2.18	0.44
1:A:73:GLU:HG2	3:A:404:HOH:O	2.17	0.44
1:B:132:ILE:N	1:B:132:ILE:HD12	2.32	0.44
1:A:7:LEU:HD11	1:A:169:ILE:HG13	1.99	0.44
1:B:5:VAL:O	1:B:5:VAL:HG13	2.17	0.44
1:B:122:VAL:HG23	2:B:805:PZ1:C1	2.48	0.44
1:A:224:TYR:HB3	1:A:292:ALA:O	2.18	0.44
1:A:243:LYS:HB2	1:A:248:TYR:CE2	2.53	0.44
1:B:215:LEU:C	1:B:305:THR:HG23	2.39	0.43
1:A:129:GLU:OE1	1:A:129:GLU:N	2.51	0.43
1:B:274:SER:HA	1:B:277:TYR:CE2	2.53	0.43
1:B:109:MET:HA	1:B:110:PRO:HD3	1.86	0.43
1:B:80:THR:HG23	1:B:81:GLY:N	2.34	0.43
1:A:139:PHE:CE1	1:A:143:ILE:HD11	2.53	0.43
1:A:273:THR:CG2	3:A:389:HOH:O	2.67	0.43
1:A:236:MET:HG3	1:A:248:TYR:CD2	2.54	0.43
1:A:42:PRO:HB2	1:A:58:LEU:HD23	2.00	0.43
1:A:321:ASP:HB3	1:A:326:ARG:HG3	2.01	0.43

*Continued on next page...*

*Continued from previous page...*

Atom-1	Atom-2	Distance(Å)	Clash(Å)
1:B:331:LEU:HD13	1:B:332:ALA:O	2.17	0.43
1:B:31:VAL:HG23	1:B:119:PHE:CD2	2.54	0.43
1:B:134:ARG:CB	1:B:134:ARG:NH1	2.82	0.43
1:B:210:CYS:O	1:B:210:CYS:SG	2.77	0.43
1:B:198:MET:HE3	1:B:263:PHE:HA	2.00	0.42
1:B:9:ASN:ND2	1:B:12:ASP:H	2.09	0.42
1:B:256:PRO:HD3	1:B:280:GLN:HE22	1.84	0.42
1:A:191:THR:HG22	1:A:192:GLY:N	2.34	0.42
1:B:142:ILE:O	1:B:145:GLN:HG2	2.19	0.42
1:B:117:ALA:CB	2:B:805:PZ1:H5	2.48	0.42
1:B:331:LEU:HD13	1:B:332:ALA:N	2.34	0.42
1:A:170:VAL:HG23	3:A:381:HOH:O	2.20	0.42
1:B:215:LEU:CB	1:B:305:THR:HG23	2.49	0.42
1:B:290:THR:CG2	1:B:291:LEU:N	2.82	0.42
1:A:165:LEU:N	1:A:165:LEU:HD23	2.35	0.42
1:B:80:THR:HG21	1:B:112:LEU:O	2.20	0.42
1:B:40:TRP:HB3	2:B:805:PZ1:H331	2.02	0.42
1:B:198:MET:HE1	1:B:263:PHE:CD2	2.51	0.42
1:B:236:MET:SD	1:B:291:LEU:HD12	2.59	0.42
1:B:81:GLY:HA3	1:B:110:PRO:CG	2.50	0.42
1:A:278:VAL:HG21	1:A:280:GLN:NE2	2.35	0.41
1:B:299:PRO:HA	1:B:300:PRO:HD3	1.90	0.41
1:B:74:LEU:HD12	1:B:74:LEU:O	2.21	0.41
1:B:290:THR:CG2	3:B:851:HOH:O	2.59	0.41
1:A:161:SER:O	1:A:162:GLU:CB	2.68	0.41
1:B:76:LEU:HB3	1:B:83:VAL:CG1	2.50	0.41
1:A:217:LEU:CD1	1:A:219:ASP:HB2	2.47	0.41
1:A:74:LEU:HD12	1:A:76:LEU:HD11	2.03	0.41
1:B:31:VAL:HG23	1:B:119:PHE:CE2	2.57	0.40
1:A:236:MET:HG3	1:A:248:TYR:CE2	2.55	0.40
1:A:207:THR:O	1:A:207:THR:HG22	2.21	0.40
1:B:106:VAL:CG2	2:B:805:PZ1:H332	2.47	0.40
1:B:5:VAL:HG13	1:B:169:ILE:HB	2.02	0.40
1:A:210:CYS:O	1:A:210:CYS:SG	2.79	0.40
1:B:77:ARG:H	1:B:77:ARG:HD2	1.87	0.40

There are no symmetry-related clashes.

## 5.3 Torsion angles

### 5.3.1 Protein backbone ⓘ

In the following table, the Percentiles column shows the percent Ramachandran outliers of the chain as a percentile score with respect to all X-ray entries followed by that with respect to entries of similar resolution. The Analysed column shows the number of residues for which the backbone conformation was analysed, and the total number of residues.

Mol	Chain	Analysed	Favoured	Allowed	Outliers	Percentiles	
1	A	325/333 (98%)	314 (97%)	10 (3%)	1 (0%)	50	53
1	B	325/333 (98%)	313 (96%)	9 (3%)	3 (1%)	25	21
All	All	650/666 (98%)	627 (96%)	19 (3%)	4 (1%)	33	32

All (4) Ramachandran outliers are listed below:

Mol	Chain	Res	Type
1	A	206	SER
1	B	79	SER
1	B	205	SER
1	B	244	ARG

### 5.3.2 Protein sidechains ⓘ

In the following table, the Percentiles column shows the percent sidechain outliers of the chain as a percentile score with respect to all X-ray entries followed by that with respect to entries of similar resolution. The Analysed column shows the number of residues for which the sidechain conformation was analysed, and the total number of residues.

Mol	Chain	Analysed	Rotameric	Outliers	Percentiles	
1	A	279/284 (98%)	264 (95%)	15 (5%)	31	35
1	B	279/284 (98%)	265 (95%)	14 (5%)	34	39
All	All	558/568 (98%)	529 (95%)	29 (5%)	32	37

All (29) residues with a non-rotameric sidechain are listed below:

Mol	Chain	Res	Type
1	A	9	ASN
1	A	76	LEU
1	A	77	ARG
1	A	113	PRO
1	A	149	LYS

*Continued on next page...*

*Continued from previous page...*

Mol	Chain	Res	Type
1	A	151	ASP
1	A	158	ASN
1	A	159	ARG
1	A	171	LEU
1	A	182	ASN
1	A	245	LEU
1	A	250	VAL
1	A	278	VAL
1	A	326	ARG
1	A	331	LEU
1	B	6	ILE
1	B	9	ASN
1	B	40	TRP
1	B	74	LEU
1	B	77	ARG
1	B	140	ASP
1	B	141	ASN
1	B	190	LYS
1	B	199	LYS
1	B	208	LEU
1	B	211	GLU
1	B	217	LEU
1	B	272	LEU
1	B	326	ARG

Some sidechains can be flipped to improve hydrogen bonding and reduce clashes. All (18) such sidechains are listed below:

Mol	Chain	Res	Type
1	A	9	ASN
1	A	26	GLN
1	A	101	GLN
1	A	141	ASN
1	A	158	ASN
1	A	195	GLN
1	A	197	GLN
1	A	264	HIS
1	A	280	GLN
1	A	294	HIS
1	B	9	ASN
1	B	26	GLN
1	B	101	GLN
1	B	130	GLN

*Continued on next page...*

*Continued from previous page...*

Mol	Chain	Res	Type
1	B	187	ASN
1	B	264	HIS
1	B	280	GLN
1	B	325	ASN

### 5.3.3 RNA ⓘ

There are no RNA chains in this entry.

## 5.4 Non-standard residues in protein, DNA, RNA chains ⓘ

There are no non-standard protein/DNA/RNA residues in this entry.

## 5.5 Carbohydrates ⓘ

There are no carbohydrates in this entry.

## 5.6 Ligand geometry ⓘ

1 ligand is modelled in this entry.

In the following table, the Counts columns list the number of bonds (or angles) for which Mogul statistics could be retrieved, the number of bonds (or angles) that are observed in the model and the number of bonds (or angles) that are defined in the chemical component dictionary. The Link column lists molecule types, if any, to which the group is linked. The Z score for a bond length (or angle) is the number of standard deviations the observed value is removed from the expected value. A bond length (or angle) with  $|Z| > 2$  is considered an outlier worth inspection. RMSZ is the root-mean-square of all Z scores of the bond lengths (or angles).

Mol	Type	Chain	Res	Link	Bond lengths			Bond angles		
					Counts	RMSZ	$\# Z  > 2$	Counts	RMSZ	$\# Z  > 2$
2	PZ1	B	805	-	47,47,47	2.77	19 (40%)	62,62,62	3.44	20 (32%)

In the following table, the Chirals column lists the number of chiral outliers, the number of chiral centers analysed, the number of these observed in the model and the number defined in the chemical component dictionary. Similar counts are reported in the Torsion and Rings columns. '-' means no outliers of that kind were identified.

Mol	Type	Chain	Res	Link	Chirals	Torsions	Rings
2	PZ1	B	805	-	1/1/7/14	0/24/61/61	0/3/5/5

All (19) bond length outliers are listed below:

Mol	Chain	Res	Type	Atoms	Z	Observed(Å)	Ideal(Å)
2	B	805	PZ1	C17-C16	7.24	1.56	1.35
2	B	805	PZ1	C17-N1	6.19	1.49	1.34
2	B	805	PZ1	C16-C15	5.88	1.56	1.40
2	B	805	PZ1	C22-C23	5.61	1.55	1.51
2	B	805	PZ1	C13-C14	5.13	1.43	1.33
2	B	805	PZ1	C15-C11	4.95	1.52	1.38
2	B	805	PZ1	C20-N3	3.86	1.56	1.48
2	B	805	PZ1	C28-C29	3.83	1.46	1.38
2	B	805	PZ1	C10-C9	3.63	1.43	1.35
2	B	805	PZ1	C27-C26	3.49	1.46	1.39
2	B	805	PZ1	C2-C3	2.96	1.45	1.40
2	B	805	PZ1	O3-C34	2.83	1.57	1.42
2	B	805	PZ1	C25-C26	2.79	1.45	1.39
2	B	805	PZ1	C28-C27	2.78	1.44	1.38
2	B	805	PZ1	C8-C3	2.50	1.44	1.39
2	B	805	PZ1	C6-C5	2.42	1.44	1.39
2	B	805	PZ1	C23-N3	2.37	1.41	1.36
2	B	805	PZ1	O1-C2	2.37	1.40	1.37
2	B	805	PZ1	C12-C13	-2.09	1.44	1.50

All (20) bond angle outliers are listed below:

Mol	Chain	Res	Type	Atoms	Z	Observed(°)	Ideal(°)
2	B	805	PZ1	C21-C20-N3	15.05	115.98	107.59
2	B	805	PZ1	C22-N2-C21	9.76	125.17	112.03
2	B	805	PZ1	C18-C19-C34	9.02	140.51	113.01
2	B	805	PZ1	C11-C12-N1	7.84	122.33	111.54
2	B	805	PZ1	C21-C20-C24	-6.50	103.24	112.89
2	B	805	PZ1	O3-C34-C19	5.26	147.41	111.60
2	B	805	PZ1	C13-C12-N1	5.08	121.01	111.39
2	B	805	PZ1	C10-C11-C15	-4.98	117.56	121.44
2	B	805	PZ1	C16-C15-C11	-4.29	116.70	121.25
2	B	805	PZ1	O1-C2-C5	-3.59	118.43	124.37
2	B	805	PZ1	O1-C2-C3	3.50	121.06	115.70
2	B	805	PZ1	C1-O1-C2	-3.25	112.77	117.59
2	B	805	PZ1	C13-C12-C11	3.01	116.66	109.90
2	B	805	PZ1	C12-C11-C10	2.99	120.57	115.67
2	B	805	PZ1	C16-C17-N1	-2.72	118.47	124.50
2	B	805	PZ1	O2-C33-C32	2.54	119.97	109.88
2	B	805	PZ1	C20-C21-N2	2.45	114.33	111.41
2	B	805	PZ1	C25-C26-N3	2.19	122.79	120.08
2	B	805	PZ1	O2-C4-C3	2.18	116.58	109.81

*Continued on next page...*

*Continued from previous page...*

Mol	Chain	Res	Type	Atoms	Z	Observed(°)	Ideal(°)
2	B	805	PZ1	O6-C14-C13	-2.16	120.25	126.13

All (1) chirality outliers are listed below:

Mol	Chain	Res	Type	Atom
2	B	805	PZ1	C12

There are no torsion outliers.

There are no ring outliers.

## 5.7 Other polymers ⓘ

There are no such residues in this entry.

## 5.8 Polymer linkage issues

There are no chain breaks in this entry.

## 6 Fit of model and data ⓘ

### 6.1 Protein, DNA and RNA chains ⓘ

In the following table, the column labelled ‘#RSRZ> 2’ contains the number (and percentage) of RSRZ outliers, followed by percent RSRZ outliers for the chain as percentile scores relative to all X-ray entries and entries of similar resolution. The OWAB column contains the minimum, median, 95<sup>th</sup> percentile and maximum values of the occupancy-weighted average B-factor per residue. The column labelled ‘Q< 0.9’ lists the number of (and percentage) of residues with an average occupancy less than 0.9.

Mol	Chain	Analysed	<RSRZ>	#RSRZ>2	OWAB(Å <sup>2</sup> )	Q<0.9
1	A	329/333 (98%)	-0.03	12 (3%) 41 41	21, 34, 52, 75	0
1	B	329/333 (98%)	0.08	19 (5%) 22 22	24, 40, 63, 81	0
All	All	658/666 (98%)	0.03	31 (4%) 30 30	21, 37, 58, 81	0

All (31) RSRZ outliers are listed below:

Mol	Chain	Res	Type	RSRZ
1	A	206	SER	5.9
1	A	161	SER	5.5
1	A	205	SER	5.1
1	A	207	THR	5.1
1	B	208	LEU	4.6
1	B	80	THR	4.4
1	A	77	ARG	4.4
1	A	208	LEU	4.3
1	B	205	SER	4.0
1	B	48	ARG	4.0
1	B	40	TRP	3.9
1	B	77	ARG	3.4
1	B	212	ASP	2.9
1	A	323	ARG	2.9
1	B	245	LEU	2.8
1	B	161	SER	2.8
1	B	206	SER	2.7
1	B	55	TYR	2.7
1	B	49	LEU	2.7
1	B	73	GLU	2.6
1	B	39	VAL	2.6
1	A	162	GLU	2.5
1	A	190	LYS	2.2
1	A	123	VAL	2.2

*Continued on next page...*

*Continued from previous page...*

Mol	Chain	Res	Type	RSRZ
1	B	300	PRO	2.2
1	B	207	THR	2.2
1	B	133	GLY	2.1
1	B	162	GLU	2.1
1	A	134	ARG	2.1
1	A	268	LYS	2.0
1	B	76	LEU	2.0

## 6.2 Non-standard residues in protein, DNA, RNA chains ⓘ

There are no non-standard protein/DNA/RNA residues in this entry.

## 6.3 Carbohydrates ⓘ

There are no carbohydrates in this entry.

## 6.4 Ligands ⓘ

In the following table, the Atoms column lists the number of modelled atoms in the group and the number defined in the chemical component dictionary. LLDF column lists the quality of electron density of the group with respect to its neighbouring residues in protein, DNA or RNA chains. The B-factors column lists the minimum, median, 95<sup>th</sup> percentile and maximum values of B factors of atoms in the group. The column labelled 'Q< 0.9' lists the number of atoms with occupancy less than 0.9.

Mol	Type	Chain	Res	Atoms	RSR	LLDF	B-factors(Å <sup>2</sup> )	Q<0.9
2	PZ1	B	805	43/43	0.15	0.53	33,37,53,56	0

## 6.5 Other polymers ⓘ

There are no such residues in this entry.