



Full wwPDB X-ray Structure Validation Report ⓘ

Feb 27, 2014 – 03:54 PM GMT

PDB ID : 4FS1
Title : Base pairing mechanism of N2,3-ethenoguanine with dTTP by human polymerase ι
Authors : Zhao, L.
Deposited on : 2012-06-26
Resolution : 2.50 Å(reported)

This is a full wwPDB validation report for a publicly released PDB entry.
We welcome your comments at validation@mail.wwpdb.org
A user guide is available at <http://wwpdb.org/ValidationPDFNotes.html>

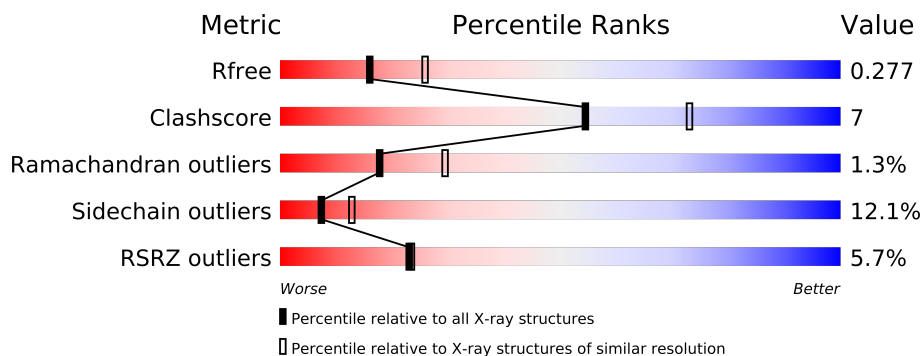
The following versions of software and data (see [references](#)) were used in the production of this report:

MolProbity : 4.02b-467
Mogul : 1.15 2013
Xtriage (Phenix) : dev-1323
EDS : stable22639
Percentile statistics : 21963
Refmac : 5.8.0049
CCP4 : 6.3.0 (Settle)
Ideal geometry (proteins) : Engh & Huber (2001)
Ideal geometry (DNA, RNA) : Parkinson et. al. (1996)
Validation Pipeline (wwPDB-VP) : stable22683

1 Overall quality at a glance

The reported resolution of this entry is 2.50 Å.

Percentile scores (ranging between 0-100) for global validation metrics of the entry are shown in the following graphic. The table shows the number of entries on which the scores are based.



Metric	Whole archive (#Entries)	Similar resolution (#Entries, resolution range(Å))
R_{free}	66092	2784 (2.50-2.50)
Clashscore	79885	3562 (2.50-2.50)
Ramachandran outliers	78287	3480 (2.50-2.50)
Sidechain outliers	78261	3482 (2.50-2.50)
RSRZ outliers	66119	2785 (2.50-2.50)

The table below summarises the geometric issues observed across the polymeric chains and their fit to the electron density. The red, orange, yellow and green segments on the lower bar indicate the fraction of residues that contain outliers for ≥ 3 , 2, 1 and 0 types of geometric quality criteria. The upper red bar (where present) indicates the fraction of residues that have poor fit to the electron density.

Mol	Chain	Length	Quality of chain
1	B	18	
1	C	18	
2	A	420	

The following table lists non-polymeric compounds that are outliers for geometric or electron-density-fit criteria:

Mol	Type	Chain	Res	Geometry	Electron density
3	MG	A	501	-	X
4	NA	A	504	-	X
5	TTP	A	505	-	X

2 Entry composition

There are 6 unique types of molecules in this entry. The entry contains 3370 atoms, of which 0 are hydrogen and 0 are deuterium.

In the tables below, the ZeroOcc column contains the number of atoms modelled with zero occupancy, the AltConf column contains the number of residues with at least one atom in alternate conformation and the Trace column contains the number of residues modelled with at most 2 atoms.

- Molecule 1 is a DNA chain called DNA 5'-D(*TP*CP*TP*(EFG)P*GP*GP*GP*TP*CP*CP*TP*AP*GP*GP*AP*CP*CP*(DOC))-3'.

Mol	Chain	Residues	Atoms					ZeroOcc	AltConf	Trace
1	B	7	Total	C	N	O	P	0	0	0
			142	67	29	39	7			
1	C	9	Total	C	F	N	O	P	0	0
			186	90	1	32	55	8		

- Molecule 2 is a protein called DNA polymerase iota.

Mol	Chain	Residues	Atoms					ZeroOcc	AltConf	Trace
2	A	383	Total	C	N	O	S	0	0	0
			2944	1856	514	554	20			

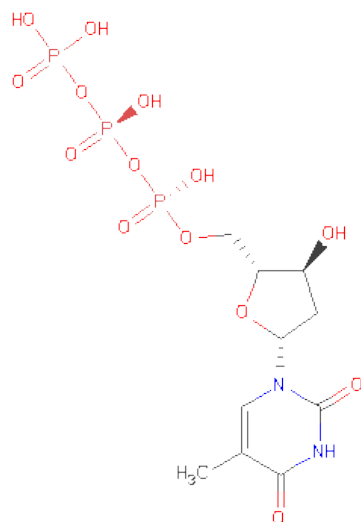
- Molecule 3 is MAGNESIUM ION (three-letter code: MG) (formula: Mg).

Mol	Chain	Residues	Atoms		ZeroOcc	AltConf
3	A	3	Total	Mg	0	0
			3	3		

- Molecule 4 is SODIUM ION (three-letter code: NA) (formula: Na).

Mol	Chain	Residues	Atoms		ZeroOcc	AltConf
4	A	1	Total	Na	0	0
			1	1		

- Molecule 5 is THYMIDINE-5'-TRIPHOSPHATE (three-letter code: TTP) (formula: C₁₀H₁₇N₂O₁₄P₃).



Mol	Chain	Residues	Atoms					ZeroOcc	AltConf
5	A	1	Total	C	N	O	P	0	0
			29	10	2	14	3		

- Molecule 6 is water.

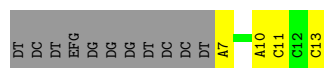
Mol	Chain	Residues	Atoms		ZeroOcc	AltConf
6	B	1	Total	O	0	0
			1	1		
6	C	5	Total	O	0	0
			5	5		
6	A	59	Total	O	0	0
			59	59		

3 Residue-property plots i

These plots are drawn for all protein, RNA and DNA chains in the entry. The first graphic for a chain summarises the proportions of errors displayed in the second graphic. The second graphic shows the sequence view annotated by issues in geometry and electron density. Residues are color-coded according to the number of geometric quality criteria for which they contain at least one outlier: green = 0, yellow = 1, orange = 2 and red = 3 or more. A red dot above a residue indicates a poor fit to the electron density ($\text{RSRZ} > 2$). Stretches of 2 or more consecutive residues without any outlier are shown as a green connector. Residues present in the sample, but not in the model, are shown in grey.

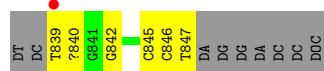
- Molecule 1: DNA 5'-D(*TP*CP*TP*(EFG)P*GP*GP*GP*TP*CP*CP*TP*AP*GP*GP*AP*CP*CP*(DOC))-3'

Chain B: 



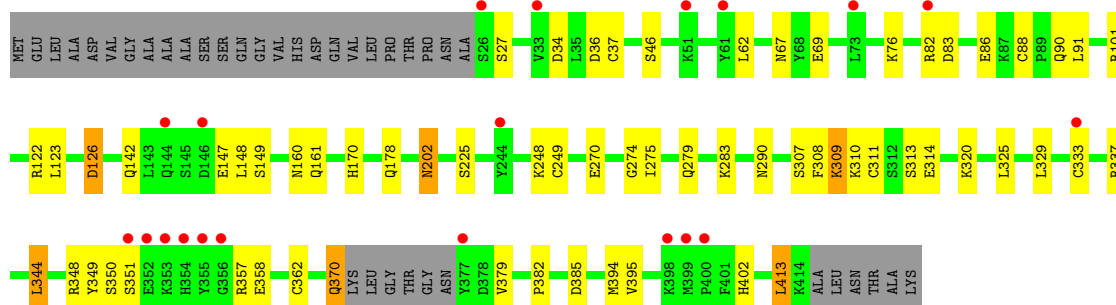
- Molecule 1: DNA 5'-D(*TP*CP*TP*(EFG)P*GP*GP*GP*TP*CP*CP*TP*AP*GP*GP*AP*CP*CP*(DOC))-3'

Chain C: 



- Molecule 2: DNA polymerase iota

Chain A: 



4 Data and refinement statistics

Property	Value	Source
Space group	P 65 2 2	Depositor
Cell constants a, b, c, α , β , γ	97.47Å 97.47Å 203.54Å 90.00° 90.00° 120.00°	Depositor
Resolution (Å)	84.41 – 2.50 29.30 – 2.40	Depositor EDS
% Data completeness (in resolution range)	99.7 (84.41-2.50) 99.8 (29.30-2.40)	Depositor EDS
R_{merge}	(Not available)	Depositor
R_{sym}	(Not available)	Depositor
$\langle I/\sigma(I) \rangle$ ¹	1.23 (at 2.39Å)	Xtriage
Refinement program	REFMAC 5.6.0117	Depositor
R, R_{free}	0.215 , 0.270 0.228 , 0.277	Depositor DCC
R_{free} test set	1179 reflections (5.40%)	DCC
Wilson B-factor (Å ²)	49.4	Xtriage
Anisotropy	0.412	Xtriage
Bulk solvent k_{sol} (e/Å ³), B_{sol} (Å ²)	0.34 , 44.8	EDS
Estimated twinning fraction	No twinning to report.	Xtriage
L-test for twinning	$\langle L \rangle = 0.50$, $\langle L^2 \rangle = 0.34$	Xtriage
Outliers	0 of 23011 reflections	Xtriage
F_o, F_c correlation	0.94	EDS
Total number of atoms	3370	wwPDB-VP
Average B, all atoms (Å ²)	58.0	wwPDB-VP

Xtriage's analysis on translational NCS is as follows: *The largest off-origin peak in the Patterson function is 5.54% of the height of the origin peak. No significant pseudotranslation is detected.*

¹Intensities estimated from amplitudes.

5 Model quality ⓘ

5.1 Standard geometry ⓘ

Bond lengths and bond angles in the following residue types are not validated in this section: NA, MG, TTP, EFG, DOC

The Z score for a bond length (or angle) is the number of standard deviations the observed value is removed from the expected value. A bond length (or angle) with $|Z| > 5$ is considered an outlier worth inspection. RMSZ is the root-mean-square of all Z scores of the bond lengths (or angles).

Mol	Chain	Bond lengths		Bond angles	
		RMSZ	$\# Z > 5$	RMSZ	$\# Z > 5$
1	B	0.44	0/139	1.08	0/212
1	C	0.93	1/178 (0.6%)	1.10	3/271 (1.1%)
2	A	0.74	0/2984	0.89	5/4035 (0.1%)
All	All	0.74	1/3301 (0.0%)	0.92	8/4518 (0.2%)

All (1) bond length outliers are listed below:

Mol	Chain	Res	Type	Atoms	Z	Observed(Å)	Ideal(Å)
1	C	846	DC	O3'-P	-5.76	1.54	1.61

All (8) bond angle outliers are listed below:

Mol	Chain	Res	Type	Atoms	Z	Observed(°)	Ideal(°)
2	A	126	ASP	CB-CG-OD1	5.92	123.63	118.30
2	A	344	LEU	CA-CB-CG	5.85	128.75	115.30
2	A	101	ARG	NE-CZ-NH2	5.78	123.19	120.30
2	A	122	ARG	NE-CZ-NH1	-5.56	117.52	120.30
1	C	845	DC	P-O3'-C3'	5.53	126.34	119.70
1	C	842	DG	O5'-P-OP2	-5.46	100.79	105.70
2	A	34	ASP	CB-CG-OD2	5.34	123.11	118.30
1	C	846	DC	P-O3'-C3'	5.01	125.71	119.70

There are no chirality outliers.

There are no planarity outliers.

5.2 Close contacts ⓘ

In the following table, the Non-H and H(model) columns list the number of non-hydrogen atoms and hydrogen atoms in the chain respectively. The H(added) column lists the number of hydrogens

added by MolProbity. The Clashes column lists the number of clashes within the asymmetric unit, and the number in parentheses is this value normalized per 1000 atoms of the molecule in the chain. The Symm-Clashes column gives symmetry related clashes, in the same way as for the Clashes column.

Mol	Chain	Non-H	H(model)	H(added)	Clashes	Symm-Clashes
1	B	142	0	78	4	1
1	C	186	0	0	3	1
2	A	2944	0	0	15	0
3	A	3	0	0	0	0
4	A	1	0	0	0	0
5	A	29	0	13	7	0
6	A	59	0	0	1	0
6	B	1	0	0	0	0
6	C	5	0	0	0	0
All	All	3370	0	91	23	1

Clashscore is defined as the number of clashes calculated for the entry per 1000 atoms (including hydrogens) of the entry. The overall clashscore for this entry is 7.

All (23) close contacts within the same asymmetric unit are listed below.

Atom-1	Atom-2	Distance(Å)	Clash(Å)
2:A:126:ASP:OD2	5:A:505:TTP:H5'2	1.73	0.88
1:C:839:DT:C2'	1:C:840:EFG:OP2	2.31	0.78
2:A:337:ARG:NH1	2:A:413:LEU:CD1	2.51	0.73
5:A:505:TTP:O2B	5:A:505:TTP:H3'	1.89	0.71
2:A:370:GLN:OE1	2:A:370:GLN:C	2.29	0.71
2:A:309:LYS:O	2:A:311:CYS:N	2.28	0.66
2:A:348:ARG:NH2	2:A:358:GLU:OE1	2.28	0.66
1:B:13:DOC:H2'	5:A:505:TTP:C6	2.34	0.62
2:A:349:TYR:N	2:A:402:HIS:O	2.38	0.56
2:A:126:ASP:CG	5:A:505:TTP:H5'2	2.26	0.55
1:B:13:DOC:H2''	5:A:505:TTP:H5'1	1.89	0.53
1:B:10:DA:H2'	1:B:11:DC:C6	2.43	0.53
2:A:126:ASP:OD2	5:A:505:TTP:O2A	2.30	0.50
2:A:270:GLU:O	2:A:274:GLY:N	2.45	0.50
2:A:202:ASN:C	2:A:202:ASN:ND2	2.66	0.48
2:A:290:ASN:ND2	6:A:635:HOH:O	2.47	0.47
2:A:161:GLN:OE1	2:A:225:SER:OG	2.33	0.47
2:A:348:ARG:NH1	2:A:394:MET:O	2.49	0.45
2:A:82:ARG:CG	2:A:83:ASP:N	2.79	0.45
1:C:840:EFG:C9	1:C:840:EFG:O4'	2.67	0.43
2:A:36:ASP:O	2:A:37:CYS:C	2.58	0.42
1:B:13:DOC:H2'	5:A:505:TTP:C5	2.55	0.41

Continued on next page...

Continued from previous page...

Atom-1	Atom-2	Distance(Å)	Clash(Å)
1:C:839:DT:O2	1:C:839:DT:O4'	2.39	0.41

All (1) symmetry-related close contacts are listed below. The label for Atom-2 includes the symmetry operator and encoded unit-cell translations to be applied.

Atom-1	Atom-2	Distance(Å)	Clash(Å)
1:B:7:DA:P	1:C:847:DT:O3'[12_564]	1.86	0.34

5.3 Torsion angles

5.3.1 Protein backbone ⓘ

In the following table, the Percentiles column shows the percent Ramachandran outliers of the chain as a percentile score with respect to all X-ray entries followed by that with respect to entries of similar resolution. The Analysed column shows the number of residues for which the backbone conformation was analysed, and the total number of residues.

Mol	Chain	Analysed	Favoured	Allowed	Outliers	Percentiles
2	A	379/420 (90%)	345 (91%)	29 (8%)	5 (1%)	18 29

All (5) Ramachandran outliers are listed below:

Mol	Chain	Res	Type
2	A	310	LYS
2	A	351	SER
2	A	313	SER
2	A	350	SER
2	A	86	GLU

5.3.2 Protein sidechains ⓘ

In the following table, the Percentiles column shows the percent sidechain outliers of the chain as a percentile score with respect to all X-ray entries followed by that with respect to entries of similar resolution. The Analysed column shows the number of residues for which the sidechain conformation was analysed, and the total number of residues.

Mol	Chain	Analysed	Rotameric	Outliers	Percentiles
2	A	330/376 (88%)	290 (88%)	40 (12%)	7 13

All (40) residues with a non-rotameric sidechain are listed below:

Mol	Chain	Res	Type
2	A	27	SER
2	A	46	SER
2	A	62	LEU
2	A	67	ASN
2	A	69	GLU
2	A	76	LYS
2	A	88	CYS
2	A	90	GLN
2	A	91	LEU
2	A	123	LEU
2	A	142	GLN
2	A	147	GLU
2	A	148	LEU
2	A	149	SER
2	A	160	ASN
2	A	170	HIS
2	A	178	GLN
2	A	202	ASN
2	A	248	LYS
2	A	249	CYS
2	A	275	ILE
2	A	279	GLN
2	A	283	LYS
2	A	307	SER
2	A	308	PHE
2	A	309	LYS
2	A	314	GLU
2	A	320	LYS
2	A	325	LEU
2	A	329	LEU
2	A	333	CYS
2	A	344	LEU
2	A	357	ARG
2	A	362	CYS
2	A	370	GLN
2	A	379	VAL
2	A	382	PRO
2	A	385	ASP
2	A	395	VAL
2	A	413	LEU

Some sidechains can be flipped to improve hydrogen bonding and reduce clashes. There are no such sidechains identified.

5.3.3 RNA ⓘ

There are no RNA chains in this entry.

5.4 Non-standard residues in protein, DNA, RNA chains ⓘ

2 non-standard protein/DNA/RNA residues are modelled in this entry.

In the following table, the Counts columns list the number of bonds (or angles) for which Mogul statistics could be retrieved, the number of bonds (or angles) that are observed in the model and the number of bonds (or angles) that are defined in the chemical component dictionary. The Link column lists molecule types, if any, to which the group is linked. The Z score for a bond length (or angle) is the number of standard deviations the observed value is removed from the expected value. A bond length (or angle) with $|Z| > 2$ is considered an outlier worth inspection. RMSZ is the root-mean-square of all Z scores of the bond lengths (or angles).

Mol	Type	Chain	Res	Link	Bond lengths			Bond angles		
					Counts	RMSZ	$\# Z > 2$	Counts	RMSZ	$\# Z > 2$
1	DOC	B	13	1	17,19,20	1.50	3 (17%)	20,26,29	2.80	8 (40%)
1	EFG	C	840	1	26,28,29	2.18	10 (38%)	32,42,45	4.42	15 (46%)

In the following table, the Chirals column lists the number of chiral outliers, the number of chiral centers analysed, the number of these observed in the model and the number defined in the chemical component dictionary. Similar counts are reported in the Torsion and Rings columns. '-' means no outliers of that kind were identified.

Mol	Type	Chain	Res	Link	Chirals	Torsions	Rings
1	DOC	B	13	1	-	0/5/18/19	0/2/2/2
1	EFG	C	840	1	-	0/8/25/26	0/1/4/4

All (13) bond length outliers are listed below:

Mol	Chain	Res	Type	Atoms	Z	Observed(Å)	Ideal(Å)
1	C	840	EFG	C4-N3	-6.01	1.33	1.39
1	C	840	EFG	C2-N3	-4.05	1.34	1.39
1	B	13	DOC	P-OP1	3.93	1.51	1.46
1	B	13	DOC	C2-N1	3.69	1.42	1.38
1	C	840	EFG	C6-C5	-3.52	1.35	1.41
1	C	840	EFG	O4'-C1'	3.46	1.46	1.41
1	C	840	EFG	C5-C4	-3.00	1.33	1.40
1	C	840	EFG	P-OP1	2.58	1.49	1.46
1	C	840	EFG	C2-N2	-2.46	1.33	1.36
1	C	840	EFG	C9-N3	-2.38	1.34	1.37
1	B	13	DOC	O2-C2	2.18	1.28	1.23

Continued on next page...

Continued from previous page...

Mol	Chain	Res	Type	Atoms	Z	Observed(Å)	Ideal(Å)
1	C	840	EFG	C6-N1	2.15	1.40	1.37
1	C	840	EFG	C4-N9	-2.07	1.34	1.38

All (23) bond angle outliers are listed below:

Mol	Chain	Res	Type	Atoms	Z	Observed(°)	Ideal(°)
1	C	840	EFG	C6-C5-N7	-16.16	131.96	134.14
1	C	840	EFG	C10-N2-C2	12.85	107.92	104.92
1	B	13	DOC	C6-C5-C4	9.45	121.39	117.47
1	C	840	EFG	C6-N1-C2	-6.94	115.37	120.28
1	C	840	EFG	C4'-O4'-C1'	-5.35	103.93	109.75
1	C	840	EFG	O4'-C1'-N9	5.24	113.31	108.44
1	B	13	DOC	C2-N3-C4	4.35	121.86	115.57
1	C	840	EFG	N2-C2-N3	-4.22	108.79	111.58
1	C	840	EFG	O4'-C1'-C2'	-3.54	101.88	105.79
1	B	13	DOC	C5-C6-N1	-3.35	117.42	121.21
1	C	840	EFG	C5-C4-N3	-2.78	118.07	124.96
1	C	840	EFG	O4'-C4'-C5'	2.57	118.55	109.36
1	C	840	EFG	F-C2'-C1'	-2.46	103.78	109.61
1	C	840	EFG	C5-C6-N1	2.44	122.53	115.39
1	C	840	EFG	C1'-N9-C4	2.33	130.29	126.46
1	B	13	DOC	C2'-C1'-N1	-2.26	108.14	112.66
1	B	13	DOC	C4'-O4'-C1'	-2.26	109.10	110.05
1	B	13	DOC	C2-N1-C1'	-2.25	116.62	119.25
1	C	840	EFG	C10-C9-N3	2.12	108.72	106.86
1	C	840	EFG	C8-N9-C1'	-2.08	122.28	126.38
1	B	13	DOC	C3'-C2'-C1'	2.08	105.10	102.80
1	B	13	DOC	C5-C4-N3	-2.07	118.88	121.68
1	C	840	EFG	P-O5'-C5'	-2.04	115.23	123.19

There are no chirality outliers.

There are no torsion outliers.

There are no ring outliers.

5.5 Carbohydrates ⓘ

There are no carbohydrates in this entry.

5.6 Ligand geometry ⓘ

Of 5 ligands modelled in this entry, 4 are monoatomic - leaving 1 for Mogul analysis.

In the following table, the Counts columns list the number of bonds (or angles) for which Mogul statistics could be retrieved, the number of bonds (or angles) that are observed in the model and the number of bonds (or angles) that are defined in the chemical component dictionary. The Link column lists molecule types, if any, to which the group is linked. The Z score for a bond length (or angle) is the number of standard deviations the observed value is removed from the expected value. A bond length (or angle) with $|Z| > 2$ is considered an outlier worth inspection. RMSZ is the root-mean-square of all Z scores of the bond lengths (or angles).

Mol	Type	Chain	Res	Link	Bond lengths			Bond angles		
					Counts	RMSZ	# $ Z > 2$	Counts	RMSZ	# $ Z > 2$
5	TTP	A	505	3	30,30,30	1.03	2 (6%)	42,47,47	1.79	6 (14%)

In the following table, the Chirals column lists the number of chiral outliers, the number of chiral centers analysed, the number of these observed in the model and the number defined in the chemical component dictionary. Similar counts are reported in the Torsion and Rings columns. '-' means no outliers of that kind were identified.

Mol	Type	Chain	Res	Link	Chirals	Torsions	Rings
5	TTP	A	505	3	-	0/19/34/34	0/2/2/2

All (2) bond length outliers are listed below:

Mol	Chain	Res	Type	Atoms	Z	Observed(Å)	Ideal(Å)
5	A	505	TTP	C2-N1	3.15	1.41	1.38
5	A	505	TTP	C4-C5	2.68	1.48	1.42

All (6) bond angle outliers are listed below:

Mol	Chain	Res	Type	Atoms	Z	Observed(°)	Ideal(°)
5	A	505	TTP	N3-C2-N1	6.40	121.31	115.97
5	A	505	TTP	C6-N1-C2	-5.13	120.95	122.41
5	A	505	TTP	PB-O3A-PA	-3.82	120.48	131.68
5	A	505	TTP	PB-O3B-PG	-3.82	120.49	131.68
5	A	505	TTP	C4-N3-C2	-2.31	120.64	125.39
5	A	505	TTP	C5-C6-N1	-2.30	119.35	121.59

There are no chirality outliers.

There are no torsion outliers.

There are no ring outliers.

5.7 Other polymers ⓘ

There are no such residues in this entry.

5.8 Polymer linkage issues

There are no chain breaks in this entry.

6 Fit of model and data ⓘ

6.1 Protein, DNA and RNA chains ⓘ

In the following table, the column labelled ‘#RSRZ> 2’ contains the number (and percentage) of RSRZ outliers, followed by percent RSRZ outliers for the chain as percentile scores relative to all X-ray entries and entries of similar resolution. The OWAB column contains the minimum, median, 95th percentile and maximum values of the occupancy-weighted average B-factor per residue. The column labelled ‘Q< 0.9’ lists the number of (and percentage) of residues with an average occupancy less than 0.9.

Mol	Chain	Analysed	<RSRZ>	#RSRZ>2	OWAB(Å ²)	Q<0.9
1	B	7/18 (38%)	-0.66	0 100 100	37, 44, 56, 60	0
1	C	9/18 (50%)	-0.20	1 (11%) 6 6	39, 43, 62, 115	0
2	A	383/420 (91%)	0.28	20 (5%) 26 27	26, 55, 102, 159	0
All	All	399/456 (87%)	0.25	21 (5%) 23 26	26, 55, 102, 159	0

All (21) RSRZ outliers are listed below:

Mol	Chain	Res	Type	RSRZ
2	A	355	TYR	13.9
2	A	353	LYS	6.4
2	A	377	TYR	6.3
2	A	352	GLU	4.7
2	A	244	TYR	4.6
2	A	354	HIS	4.4
2	A	400	PRO	4.0
2	A	351	SER	3.8
2	A	61	TYR	3.8
2	A	82	ARG	3.6
2	A	73	LEU	3.2
2	A	146	ASP	2.8
2	A	356	GLY	2.8
1	C	839	DT	2.7
2	A	399	MET	2.4
2	A	33	VAL	2.4
2	A	51	LYS	2.3
2	A	144	GLN	2.3
2	A	398	LYS	2.2
2	A	333	CYS	2.2
2	A	26	SER	2.1

6.2 Non-standard residues in protein, DNA, RNA chains ⓘ

In the following table, the Atoms column lists the number of modelled atoms in the group and the number defined in the chemical component dictionary. LLDF column lists the quality of electron density of the group with respect to its neighbouring residues in protein, DNA or RNA chains. The B-factors column lists the minimum, median, 95th percentile and maximum values of B factors of atoms in the group. The column labelled 'Q< 0.9' lists the number of atoms with occupancy less than 0.9.

Mol	Type	Chain	Res	Atoms	RSR	LLDF	B-factors(Å ²)	Q<0.9
1	EFG	C	840	25/26	0.11	-1.03	48,58,88,91	0
1	DOC	B	13	18/19	0.11	-1.95	28,36,43,47	0

6.3 Carbohydrates ⓘ

There are no carbohydrates in this entry.

6.4 Ligands ⓘ

In the following table, the Atoms column lists the number of modelled atoms in the group and the number defined in the chemical component dictionary. LLDF column lists the quality of electron density of the group with respect to its neighbouring residues in protein, DNA or RNA chains. The B-factors column lists the minimum, median, 95th percentile and maximum values of B factors of atoms in the group. The column labelled 'Q< 0.9' lists the number of atoms with occupancy less than 0.9.

Mol	Type	Chain	Res	Atoms	RSR	LLDF	B-factors(Å ²)	Q<0.9
4	NA	A	504	1/1	0.66	24.03	58,58,58,58	0
3	MG	A	501	1/1	0.32	3.28	61,61,61,61	0
5	TTP	A	505	29/29	0.30	2.73	30,46,70,80	8
3	MG	A	503	1/1	0.22	1.25	47,47,47,47	0
3	MG	A	502	1/1	0.07	-1.77	45,45,45,45	0

6.5 Other polymers ⓘ

There are no such residues in this entry.