



# Full wwPDB X-ray Structure Validation Report ⓘ

Feb 27, 2014 – 04:57 AM GMT

PDB ID : 4FS2  
Title : Base pairing mechanism of N2,3-ethenoguanine with dCTP by human polymerase  $\iota$   
Authors : Zhao, L.  
Deposited on : 2012-06-26  
Resolution : 2.05 Å(reported)

This is a full wwPDB validation report for a publicly released PDB entry.  
We welcome your comments at [validation@mail.wwpdb.org](mailto:validation@mail.wwpdb.org)  
A user guide is available at <http://wwpdb.org/ValidationPDFNotes.html>

---

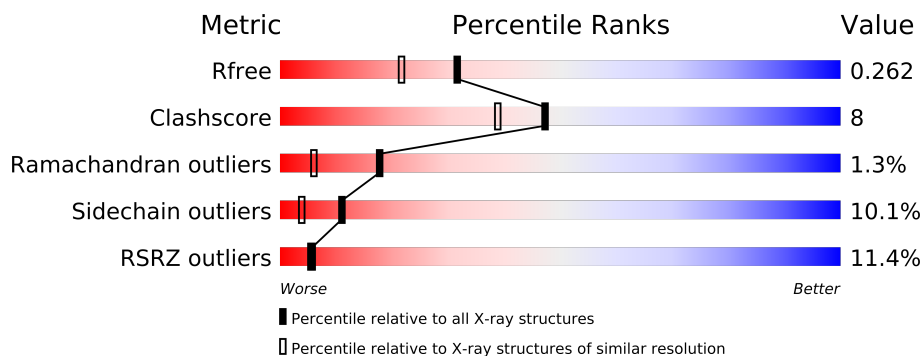
The following versions of software and data (see [references](#)) were used in the production of this report:

MolProbity : 4.02b-467  
Mogul : 1.15 2013  
Xtriage (Phenix) : dev-1323  
EDS : stable22639  
Percentile statistics : 21963  
Refmac : 5.8.0049  
CCP4 : 6.3.0 (Settle)  
Ideal geometry (proteins) : Engh & Huber (2001)  
Ideal geometry (DNA, RNA) : Parkinson et. al. (1996)  
Validation Pipeline (wwPDB-VP) : stable22683

# 1 Overall quality at a glance

The reported resolution of this entry is 2.05 Å.

Percentile scores (ranging between 0-100) for global validation metrics of the entry are shown in the following graphic. The table shows the number of entries on which the scores are based.



Metric	Whole archive (#Entries)	Similar resolution (#Entries, resolution range(Å))
$R_{free}$	66092	1380 (2.06-2.02)
Clashscore	79885	1577 (2.06-2.02)
Ramachandran outliers	78287	1565 (2.06-2.02)
Sidechain outliers	78261	1565 (2.06-2.02)
RSRZ outliers	66119	1381 (2.06-2.02)

The table below summarises the geometric issues observed across the polymeric chains and their fit to the electron density. The red, orange, yellow and green segments on the lower bar indicate the fraction of residues that contain outliers for  $\geq 3$ , 2, 1 and 0 types of geometric quality criteria. The upper red bar (where present) indicates the fraction of residues that have poor fit to the electron density.

Mol	Chain	Length	Quality of chain
1	B	18	
1	C	18	
2	A	420	

The following table lists non-polymeric compounds that are outliers for geometric or electron-density-fit criteria:

Mol	Type	Chain	Res	Geometry	Electron density
3	MG	A	501	-	X
3	MG	A	505	-	X

## 2 Entry composition

There are 6 unique types of molecules in this entry. The entry contains 3422 atoms, of which 0 are hydrogen and 0 are deuterium.

In the tables below, the ZeroOcc column contains the number of atoms modelled with zero occupancy, the AltConf column contains the number of residues with at least one atom in alternate conformation and the Trace column contains the number of residues modelled with at most 2 atoms.

- Molecule 1 is a DNA chain called DNA (5'-D(\*TP\*CP\*TP\*(EFG)P\*GP\*GP\*GP\*TP\*CP\*CP\*TP\*AP\*GP\*GP\*AP\*CP\*CP\*(DOC))-3').

Mol	Chain	Residues	Atoms					ZeroOcc	AltConf	Trace
1	B	7	Total	C	N	O	P	0	0	0
			142	67	29	39	7			
1	C	8	Total	C	F	N	O	P	0	0
			169	80	1	30	50	8		

- Molecule 2 is a protein called DNA polymerase iota.

Mol	Chain	Residues	Atoms					ZeroOcc	AltConf	Trace
2	A	383	Total	C	N	O	S	0	0	0
			2900	1828	511	540	21			

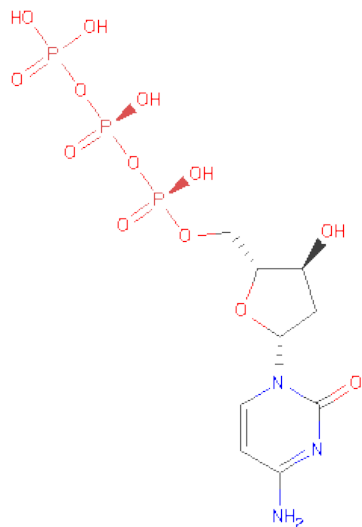
- Molecule 3 is MAGNESIUM ION (three-letter code: MG) (formula: Mg).

Mol	Chain	Residues	Atoms		ZeroOcc	AltConf
3	A	3	Total	Mg	0	0
			3	3		

- Molecule 4 is SODIUM ION (three-letter code: NA) (formula: Na).

Mol	Chain	Residues	Atoms		ZeroOcc	AltConf
4	A	1	Total	Na	0	0
			1	1		

- Molecule 5 is 2'-DEOXYCYTIDINE-5'-TRIPHOSPHATE (three-letter code: DCP) (formula: C<sub>9</sub>H<sub>16</sub>N<sub>3</sub>O<sub>13</sub>P<sub>3</sub>).



Mol	Chain	Residues	Atoms					ZeroOcc	AltConf
5	A	1	Total	C	N	O	P	0	0
			28	9	3	13	3		

- Molecule 6 is water.

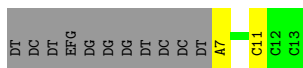
Mol	Chain	Residues	Atoms		ZeroOcc	AltConf
6	B	8	Total	O	0	0
			8	8		
6	C	22	Total	O	0	0
			22	22		
6	A	149	Total	O	0	0
			149	149		

### 3 Residue-property plots

These plots are drawn for all protein, RNA and DNA chains in the entry. The first graphic for a chain summarises the proportions of errors displayed in the second graphic. The second graphic shows the sequence view annotated by issues in geometry and electron density. Residues are color-coded according to the number of geometric quality criteria for which they contain at least one outlier: green = 0, yellow = 1, orange = 2 and red = 3 or more. A red dot above a residue indicates a poor fit to the electron density ( $RSRZ > 2$ ). Stretches of 2 or more consecutive residues without any outlier are shown as a green connector. Residues present in the sample, but not in the model, are shown in grey.

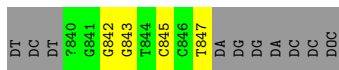
- Molecule 1: DNA (5'-D(\*TP\*CP\*TP\*(EFG)P\*GP\*GP\*GP\*TP\*CP\*CP\*TP\*AP\*GP\*GP\*AP\*CP\*CP\*(DOC))-3')

Chain B: 



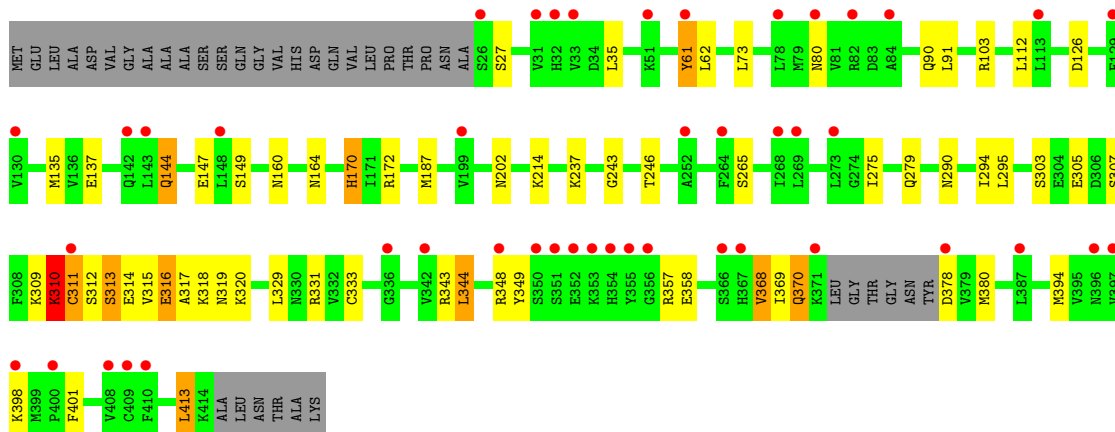
- Molecule 1: DNA (5'-D(\*TP\*CP\*TP\*(EFG)P\*GP\*GP\*GP\*TP\*CP\*CP\*TP\*AP\*GP\*GP\*AP\*CP\*CP\*(DOC))-3')

Chain C: 



- Molecule 2: DNA polymerase iota

Chain A: 



## 4 Data and refinement statistics

Property	Value	Source
Space group	P 65 2 2	Depositor
Cell constants a, b, c, $\alpha$ , $\beta$ , $\gamma$	97.30Å 97.30Å 202.91Å 90.00° 90.00° 120.00°	Depositor
Resolution (Å)	84.26 – 2.05 28.81 – 2.05	Depositor EDS
% Data completeness (in resolution range)	99.7 (84.26-2.05) 99.8 (28.81-2.05)	Depositor EDS
$R_{merge}$	(Not available)	Depositor
$R_{sym}$	(Not available)	Depositor
$\langle I/\sigma(I) \rangle$ <sup>1</sup>	3.31 (at 2.04Å)	Xtriage
Refinement program	REFMAC 5.6.0117	Depositor
R, $R_{free}$	0.214 , 0.261 0.221 , 0.262	Depositor DCC
$R_{free}$ test set	1819 reflections (5.27%)	DCC
Wilson B-factor (Å <sup>2</sup> )	42.8	Xtriage
Anisotropy	0.145	Xtriage
Bulk solvent $k_{sol}$ (e/Å <sup>3</sup> ), $B_{sol}$ (Å <sup>2</sup> )	0.36 , 55.3	EDS
Estimated twinning fraction	No twinning to report.	Xtriage
L-test for twinning	$\langle  L  \rangle = 0.51$ , $\langle L^2 \rangle = 0.34$	Xtriage
Outliers	0 of 36362 reflections	Xtriage
$F_o, F_c$ correlation	0.95	EDS
Total number of atoms	3422	wwPDB-VP
Average B, all atoms (Å <sup>2</sup> )	53.0	wwPDB-VP

Xtriage's analysis on translational NCS is as follows: *The largest off-origin peak in the Patterson function is 5.44% of the height of the origin peak. No significant pseudotranslation is detected.*

<sup>1</sup>Intensities estimated from amplitudes.

## 5 Model quality

### 5.1 Standard geometry

Bond lengths and bond angles in the following residue types are not validated in this section: NA, MG, EFG, DCP, DOC

The Z score for a bond length (or angle) is the number of standard deviations the observed value is removed from the expected value. A bond length (or angle) with  $|Z| > 5$  is considered an outlier worth inspection. RMSZ is the root-mean-square of all Z scores of the bond lengths (or angles).

Mol	Chain	Bond lengths		Bond angles	
		RMSZ	$\# Z  > 5$	RMSZ	$\# Z  > 5$
1	B	0.60	0/139	0.99	0/212
1	C	1.36	2/160 (1.2%)	0.90	1/245 (0.4%)
2	A	0.89	0/2940	0.94	4/3982 (0.1%)
All	All	0.91	2/3239 (0.1%)	0.94	5/4439 (0.1%)

All (2) bond length outliers are listed below:

Mol	Chain	Res	Type	Atoms	Z	Observed(Å)	Ideal(Å)
1	C	842	DG	O3'-P	-6.66	1.53	1.61
1	C	843	DG	O3'-P	-5.99	1.53	1.61

All (5) bond angle outliers are listed below:

Mol	Chain	Res	Type	Atoms	Z	Observed(°)	Ideal(°)
1	C	845	DC	P-O3'-C3'	6.97	128.06	119.70
2	A	135	MET	CG-SD-CE	-5.50	91.39	100.20
2	A	368	VAL	CB-CA-C	-5.50	100.94	111.40
2	A	344	LEU	CA-CB-CG	5.18	127.23	115.30
2	A	413	LEU	CA-CB-CG	5.05	126.91	115.30

There are no chirality outliers.

There are no planarity outliers.

### 5.2 Close contacts

In the following table, the Non-H and H(model) columns list the number of non-hydrogen atoms and hydrogen atoms in the chain respectively. The H(added) column lists the number of hydrogens added by MolProbity. The Clashes column lists the number of clashes within the asymmetric unit, and the number in parentheses is this value normalized per 1000 atoms of the molecule in the

chain. The Symm-Clashes column gives symmetry related clashes, in the same way as for the Clashes column.

Mol	Chain	Non-H	H(model)	H(added)	Clashes	Symm-Clashes
1	B	142	0	0	1	2
1	C	169	0	13	0	2
2	A	2900	0	0	26	0
3	A	3	0	0	0	0
4	A	1	0	0	0	0
5	A	28	0	12	0	0
6	A	149	0	0	3	0
6	B	8	0	0	0	0
6	C	22	0	0	0	0
All	All	3422	0	25	26	2

Clashscore is defined as the number of clashes calculated for the entry per 1000 atoms (including hydrogens) of the entry. The overall clashscore for this entry is 8.

All (26) close contacts within the same asymmetric unit are listed below.

Atom-1	Atom-2	Distance(Å)	Clash(Å)
2:A:310:LYS:CE	2:A:349:TYR:CB	2.43	0.96
2:A:237:LYS:CE	6:A:746:HOH:O	2.32	0.75
2:A:137:GLU:CG	2:A:172:ARG:NH2	2.53	0.71
2:A:314:GLU:O	2:A:316:GLU:N	2.31	0.64
2:A:90:GLN:OE1	2:A:90:GLN:N	2.32	0.62
2:A:348:ARG:NH1	2:A:394:MET:O	2.36	0.59
2:A:35:LEU:CD2	2:A:187:MET:CE	2.82	0.58
2:A:214:LYS:NZ	6:A:637:HOH:O	2.36	0.57
2:A:144:GLN:CD	2:A:144:GLN:N	2.57	0.57
2:A:331:ARG:CD	6:A:747:HOH:O	2.52	0.57
2:A:275:ILE:CD1	2:A:279:GLN:NE2	2.68	0.56
2:A:303:SER:O	2:A:331:ARG:NH2	2.40	0.55
2:A:368:VAL:O	2:A:370:GLN:N	2.40	0.55
2:A:144:GLN:OE1	2:A:147:GLU:CB	2.58	0.52
2:A:243:GLY:N	2:A:246:THR:CG2	2.73	0.51
1:B:11:DC:OP1	2:A:246:THR:CG2	2.59	0.51
2:A:309:LYS:O	2:A:311:CYS:N	2.44	0.50
2:A:316:GLU:O	2:A:319:ASN:N	2.45	0.50
2:A:378:ASP:O	2:A:380:MET:N	2.48	0.46
2:A:313:SER:OG	2:A:401:PHE:CB	2.65	0.44
2:A:103:ARG:CZ	2:A:331:ARG:CD	2.96	0.43
2:A:61:TYR:CG	2:A:61:TYR:O	2.70	0.43
2:A:112:LEU:C	2:A:112:LEU:CD2	2.88	0.42
2:A:164:ASN:N	2:A:170:HIS:CD2	2.88	0.42

*Continued on next page...*



*Continued from previous page...*

Atom-1	Atom-2	Distance(Å)	Clash(Å)
2:A:368:VAL:CG1	2:A:368:VAL:O	2.67	0.42
2:A:348:ARG:NH2	2:A:358:GLU:OE1	2.54	0.41

All (2) symmetry-related close contacts are listed below. The label for Atom-2 includes the symmetry operator and encoded unit-cell translations to be applied.

Atom-1	Atom-2	Distance(Å)	Clash(Å)
1:B:7:DA:P	1:C:847:DT:O3'[10_445]	1.35	0.85
1:B:7:DA:O5'	1:C:847:DT:O3'[10_445]	2.15	0.05

## 5.3 Torsion angles

### 5.3.1 Protein backbone ⓘ

In the following table, the Percentiles column shows the percent Ramachandran outliers of the chain as a percentile score with respect to all X-ray entries followed by that with respect to entries of similar resolution. The Analysed column shows the number of residues for which the backbone conformation was analysed, and the total number of residues.

Mol	Chain	Analysed	Favoured	Allowed	Outliers	Percentiles
2	A	379/420 (90%)	358 (94%)	16 (4%)	5 (1%)	18 6

All (5) Ramachandran outliers are listed below:

Mol	Chain	Res	Type
2	A	310	LYS
2	A	315	VAL
2	A	317	ALA
2	A	73	LEU
2	A	369	ILE

### 5.3.2 Protein sidechains ⓘ

In the following table, the Percentiles column shows the percent sidechain outliers of the chain as a percentile score with respect to all X-ray entries followed by that with respect to entries of similar resolution. The Analysed column shows the number of residues for which the sidechain conformation was analysed, and the total number of residues.

Mol	Chain	Analysed	Rotameric	Outliers	Percentiles
2	A	318/376 (85%)	286 (90%)	32 (10%)	11 4

All (32) residues with a non-rotameric sidechain are listed below:

Mol	Chain	Res	Type
2	A	27	SER
2	A	61	TYR
2	A	62	LEU
2	A	80	ASN
2	A	91	LEU
2	A	126	ASP
2	A	144	GLN
2	A	149	SER
2	A	160	ASN
2	A	170	HIS
2	A	202	ASN
2	A	265	SER
2	A	290	ASN
2	A	294	ILE
2	A	295	LEU
2	A	305	GLU
2	A	307	SER
2	A	310	LYS
2	A	311	CYS
2	A	312	SER
2	A	313	SER
2	A	316	GLU
2	A	318	LYS
2	A	320	LYS
2	A	329	LEU
2	A	333	CYS
2	A	343	ARG
2	A	344	LEU
2	A	357	ARG
2	A	370	GLN
2	A	398	LYS
2	A	413	LEU

Some sidechains can be flipped to improve hydrogen bonding and reduce clashes. There are no such sidechains identified.

### 5.3.3 RNA ⓘ

There are no RNA chains in this entry.

## 5.4 Non-standard residues in protein, DNA, RNA chains ⓘ

2 non-standard protein/DNA/RNA residues are modelled in this entry.

In the following table, the Counts columns list the number of bonds (or angles) for which Mogul statistics could be retrieved, the number of bonds (or angles) that are observed in the model and the number of bonds (or angles) that are defined in the chemical component dictionary. The Link column lists molecule types, if any, to which the group is linked. The Z score for a bond length (or angle) is the number of standard deviations the observed value is removed from the expected value. A bond length (or angle) with  $|Z| > 2$  is considered an outlier worth inspection. RMSZ is the root-mean-square of all Z scores of the bond lengths (or angles).

Mol	Type	Chain	Res	Link	Bond lengths			Bond angles		
					Counts	RMSZ	# Z  > 2	Counts	RMSZ	# Z  > 2
1	DOC	B	13	1	17,19,20	1.50	2 (11%)	20,26,29	2.19	7 (35%)
1	EFG	C	840	-	26,28,29	3.33	12 (46%)	32,42,45	6.01	12 (37%)

In the following table, the Chirals column lists the number of chiral outliers, the number of chiral centers analysed, the number of these observed in the model and the number defined in the chemical component dictionary. Similar counts are reported in the Torsion and Rings columns. '-' means no outliers of that kind were identified.

Mol	Type	Chain	Res	Link	Chirals	Torsions	Rings
1	DOC	B	13	1	-	0/5/18/19	0/2/2/2
1	EFG	C	840	-	-	0/8/25/26	0/1/4/4

All (14) bond length outliers are listed below:

Mol	Chain	Res	Type	Atoms	Z	Observed(Å)	Ideal(Å)
1	C	840	EFG	C4-N3	-8.10	1.30	1.39
1	C	840	EFG	C2-N3	-6.68	1.30	1.39
1	C	840	EFG	C6-C5	-5.37	1.32	1.41
1	C	840	EFG	C9-N3	-5.28	1.29	1.37
1	C	840	EFG	C2-N2	-4.79	1.30	1.36
1	B	13	DOC	C2-N1	4.39	1.43	1.38
1	C	840	EFG	C8-N9	-4.10	1.30	1.36
1	C	840	EFG	C4-N9	-4.00	1.30	1.38
1	C	840	EFG	P-OP1	-3.64	1.42	1.46
1	B	13	DOC	P-OP1	-3.25	1.43	1.46
1	C	840	EFG	O3'-C3'	-3.20	1.35	1.43
1	C	840	EFG	C5-C4	-3.11	1.33	1.40
1	C	840	EFG	C5-N7	-2.90	1.29	1.40
1	C	840	EFG	O6-C6	-2.18	1.20	1.24

All (19) bond angle outliers are listed below:

Mol	Chain	Res	Type	Atoms	Z	Observed(°)	Ideal(°)
1	C	840	EFG	C6-C5-N7	-30.47	130.04	134.14
1	C	840	EFG	C10-N2-C2	9.27	107.08	104.92
1	B	13	DOC	C6-C5-C4	6.86	120.32	117.47
1	C	840	EFG	N2-C2-N3	-5.16	108.17	111.58
1	C	840	EFG	C4'-O4'-C1'	-5.00	104.31	109.75
1	C	840	EFG	C1'-N9-C4	3.71	132.57	126.46
1	C	840	EFG	O4'-C1'-N9	3.22	111.44	108.44
1	C	840	EFG	C4-C5-N7	-3.10	106.87	109.52
1	B	13	DOC	C2-N1-C1'	-2.98	115.77	119.25
1	C	840	EFG	O4'-C1'-C2'	-2.89	102.60	105.79
1	B	13	DOC	O4'-C4'-C3'	2.61	109.18	104.80
1	C	840	EFG	O3'-C3'-C4'	-2.56	103.54	111.08
1	C	840	EFG	C8-N9-C1'	-2.51	121.44	126.38
1	C	840	EFG	F-C2'-C3'	-2.43	102.82	109.39
1	B	13	DOC	C3'-C2'-C1'	2.29	105.34	102.80
1	B	13	DOC	C6-N1-C1'	2.23	124.52	119.35
1	C	840	EFG	O4'-C4'-C5'	2.17	117.12	109.36
1	B	13	DOC	O4'-C1'-N1	2.12	111.66	107.68
1	B	13	DOC	C2-N3-C4	2.11	118.62	115.57

There are no chirality outliers.

There are no torsion outliers.

There are no ring outliers.

## 5.5 Carbohydrates

There are no carbohydrates in this entry.

## 5.6 Ligand geometry

Of 5 ligands modelled in this entry, 4 are monoatomic - leaving 1 for Mogul analysis.

In the following table, the Counts columns list the number of bonds (or angles) for which Mogul statistics could be retrieved, the number of bonds (or angles) that are observed in the model and the number of bonds (or angles) that are defined in the chemical component dictionary. The Link column lists molecule types, if any, to which the group is linked. The Z score for a bond length (or angle) is the number of standard deviations the observed value is removed from the expected value. A bond length (or angle) with  $|Z| > 2$  is considered an outlier worth inspection. RMSZ is the root-mean-square of all Z scores of the bond lengths (or angles).

Mol	Type	Chain	Res	Link	Bond lengths			Bond angles		
					Counts	RMSZ	# Z  > 2	Counts	RMSZ	# Z  > 2
5	DCP	A	503	3	29,29,29	1.22	3 (10%)	42,45,45	1.43	3 (7%)

In the following table, the Chirals column lists the number of chiral outliers, the number of chiral centers analysed, the number of these observed in the model and the number defined in the chemical component dictionary. Similar counts are reported in the Torsion and Rings columns. '-' means no outliers of that kind were identified.

Mol	Type	Chain	Res	Link	Chirals	Torsions	Rings
5	DCP	A	503	3	-	0/19/34/34	0/2/2/2

All (3) bond length outliers are listed below:

Mol	Chain	Res	Type	Atoms	Z	Observed(Å)	Ideal(Å)
5	A	503	DCP	PA-O3A	2.82	1.65	1.59
5	A	503	DCP	O2-C2	2.43	1.28	1.23
5	A	503	DCP	C5-C4	-2.21	1.35	1.40

All (3) bond angle outliers are listed below:

Mol	Chain	Res	Type	Atoms	Z	Observed(°)	Ideal(°)
5	A	503	DCP	C2-N3-C4	5.82	124.00	115.57
5	A	503	DCP	O3G-PG-O2G	2.87	118.79	107.61
5	A	503	DCP	O2A-PA-O1A	2.38	125.50	112.21

There are no chirality outliers.

There are no torsion outliers.

There are no ring outliers.

## 5.7 Other polymers ⓘ

There are no such residues in this entry.

## 5.8 Polymer linkage issues

There are no chain breaks in this entry.

## 6 Fit of model and data ⓘ

### 6.1 Protein, DNA and RNA chains ⓘ

In the following table, the column labelled ‘#RSRZ> 2’ contains the number (and percentage) of RSRZ outliers, followed by percent RSRZ outliers for the chain as percentile scores relative to all X-ray entries and entries of similar resolution. The OWAB column contains the minimum, median, 95<sup>th</sup> percentile and maximum values of the occupancy-weighted average B-factor per residue. The column labelled ‘Q< 0.9’ lists the number of (and percentage) of residues with an average occupancy less than 0.9.

Mol	Chain	Analysed	<RSRZ>	#RSRZ>2		OWAB(Å <sup>2</sup> )	Q<0.9
1	B	7/18 (38%)	-0.20	0	100 100	42, 46, 59, 63	0
1	C	8/18 (44%)	-0.66	0	100 100	36, 41, 49, 53	0
2	A	383/420 (91%)	0.67	45 (11%)	5 5	28, 50, 94, 176	1 (0%)
All	All	398/456 (87%)	0.63	45 (11%)	6 6	28, 50, 94, 176	1 (0%)

All (45) RSRZ outliers are listed below:

Mol	Chain	Res	Type	RSRZ
2	A	353	LYS	12.8
2	A	355	TYR	11.9
2	A	352	GLU	10.2
2	A	354	HIS	9.6
2	A	311	CYS	9.4
2	A	351	SER	4.3
2	A	397	VAL	4.3
2	A	350	SER	4.2
2	A	33	VAL	4.0
2	A	367	HIS	4.0
2	A	400	PRO	3.7
2	A	31	VAL	3.7
2	A	336	GLY	3.7
2	A	398	LYS	3.4
2	A	252	ALA	3.4
2	A	142	GLN	3.4
2	A	26	SER	3.3
2	A	199	VAL	3.2
2	A	269	LEU	3.1
2	A	409	CYS	3.0
2	A	356	GLY	3.0
2	A	268	ILE	3.0
2	A	78	LEU	3.0

*Continued on next page...*

*Continued from previous page...*

Mol	Chain	Res	Type	RSRZ
2	A	408	VAL	3.0
2	A	82	ARG	2.9
2	A	378	ASP	2.9
2	A	342	VAL	2.9
2	A	84	ALA	2.6
2	A	387	LEU	2.6
2	A	130	VAL	2.5
2	A	80	ASN	2.5
2	A	61	TYR	2.4
2	A	348	ARG	2.4
2	A	143	LEU	2.4
2	A	51	LYS	2.4
2	A	264	PHE	2.3
2	A	129	PHE	2.2
2	A	396	ASN	2.2
2	A	273	LEU	2.1
2	A	410	PHE	2.1
2	A	371	LYS	2.1
2	A	113	LEU	2.0
2	A	32	HIS	2.0
2	A	148	LEU	2.0
2	A	366	SER	2.0

## 6.2 Non-standard residues in protein, DNA, RNA chains ⓘ

In the following table, the Atoms column lists the number of modelled atoms in the group and the number defined in the chemical component dictionary. LLDF column lists the quality of electron density of the group with respect to its neighbouring residues in protein, DNA or RNA chains. The B-factors column lists the minimum, median, 95<sup>th</sup> percentile and maximum values of B factors of atoms in the group. The column labelled 'Q< 0.9' lists the number of atoms with occupancy less than 0.9.

Mol	Type	Chain	Res	Atoms	RSR	LLDF	B-factors(Å <sup>2</sup> )	Q<0.9
1	DOC	B	13	18/19	0.15	-0.39	40,44,48,48	0
1	EFG	C	840	25/26	0.09	-1.07	40,48,67,71	0

## 6.3 Carbohydrates ⓘ

There are no carbohydrates in this entry.

## 6.4 Ligands

In the following table, the Atoms column lists the number of modelled atoms in the group and the number defined in the chemical component dictionary. LLDF column lists the quality of electron density of the group with respect to its neighbouring residues in protein, DNA or RNA chains. The B-factors column lists the minimum, median, 95<sup>th</sup> percentile and maximum values of B factors of atoms in the group. The column labelled 'Q< 0.9' lists the number of atoms with occupancy less than 0.9.

Mol	Type	Chain	Res	Atoms	RSR	LLDF	B-factors(Å <sup>2</sup> )	Q<0.9
3	MG	A	505	1/1	0.82	44.83	30,30,30,30	0
3	MG	A	501	1/1	0.24	2.02	15,15,15,15	1
3	MG	A	504	1/1	0.20	0.56	41,41,41,41	0
5	DCP	A	503	28/28	0.10	-0.86	29,38,42,44	0
4	NA	A	502	1/1	0.06	-1.56	38,38,38,38	0

## 6.5 Other polymers

There are no such residues in this entry.