



Full wwPDB X-ray Structure Validation Report

Feb 27, 2014 – 03:44 PM GMT

PDB ID : 2FYV
Title : Golgi alpha-mannosidase II complex with an amino-salacinol carboxylate analog
Authors : Kuntz, D.A; Hamlet, T.; Rose, D.R.
Deposited on : 2006-02-08
Resolution : 1.90 Å(reported)

This is a full wwPDB validation report for a publicly released PDB entry.
We welcome your comments at validation@mail.wwpdb.org
A user guide is available at <http://wwpdb.org/ValidationPDFNotes.html>

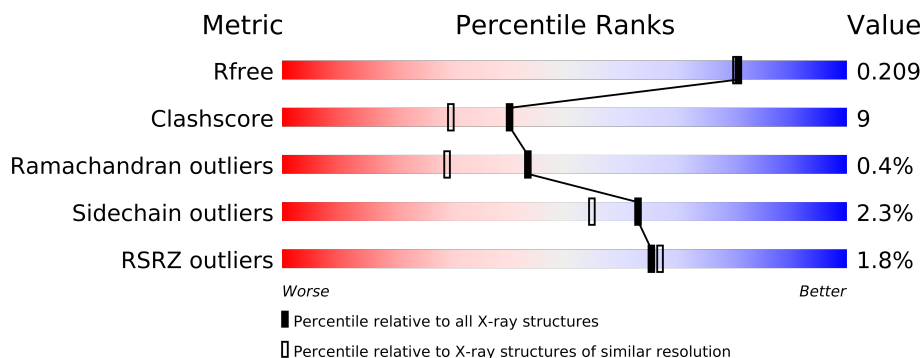
The following versions of software and data (see [references](#)) were used in the production of this report:

MolProbity : 4.02b-467
Mogul : 1.15 2013
Xtriage (Phenix) : dev-1323
EDS : stable22639
Percentile statistics : 21963
Refmac : 5.8.0049
CCP4 : 6.3.0 (Settle)
Ideal geometry (proteins) : Engh & Huber (2001)
Ideal geometry (DNA, RNA) : Parkinson et. al. (1996)
Validation Pipeline (wwPDB-VP) : stable22683

1 Overall quality at a glance


The reported resolution of this entry is 1.90 Å.

Percentile scores (ranging between 0-100) for global validation metrics of the entry are shown in the following graphic. The table shows the number of entries on which the scores are based.



Metric	Whole archive (#Entries)	Similar resolution (#Entries, resolution range(Å))
R_{free}	66092	3684 (1.90-1.90)
Clashscore	79885	4465 (1.90-1.90)
Ramachandran outliers	78287	4413 (1.90-1.90)
Sidechain outliers	78261	4414 (1.90-1.90)
RSRZ outliers	66119	3686 (1.90-1.90)

The table below summarises the geometric issues observed across the polymeric chains and their fit to the electron density. The red, orange, yellow and green segments on the lower bar indicate the fraction of residues that contain outliers for ≥ 3 , 2, 1 and 0 types of geometric quality criteria. The upper red bar (where present) indicates the fraction of residues that have poor fit to the electron density.

Mol	Chain	Length	Quality of chain
1	A	1045	

The following table lists non-polymeric compounds that are outliers for geometric or electron-density-fit criteria:

Mol	Type	Chain	Res	Geometry	Electron density
3	PO4	A	2002	-	X
5	W72	A	2000	-	X
6	MPD	A	2001	-	X

2 Entry composition

There are 7 unique types of molecules in this entry. The entry contains 9313 atoms, of which 0 are hydrogen and 0 are deuterium.

In the tables below, the ZeroOcc column contains the number of atoms modelled with zero occupancy, the AltConf column contains the number of residues with at least one atom in alternate conformation and the Trace column contains the number of residues modelled with at most 2 atoms.

- Molecule 1 is a protein called putative golgi alpha-mannosidase II.

Mol	Chain	Residues	Atoms					ZeroOcc	AltConf	Trace
			Total	C	N	O	S			
1	A	1014	8216	5222	1438	1516	40	0	10	0

There are 12 discrepancies between the modelled and reference sequences:

Chain	Residue	Modelled	Actual	Comment	Reference
A	1	ARG	-	CLONING ARTIFACT	GB 517481
A	2	SER	-	CLONING ARTIFACT	GB 517481
A	3	SER	-	CLONING ARTIFACT	GB 517481
A	4	HIS	-	EXPRESSION TAG	GB 517481
A	5	HIS	-	EXPRESSION TAG	GB 517481
A	6	HIS	-	EXPRESSION TAG	GB 517481
A	7	HIS	-	EXPRESSION TAG	GB 517481
A	8	HIS	-	EXPRESSION TAG	GB 517481
A	9	HIS	-	EXPRESSION TAG	GB 517481
A	10	GLY	-	CLONING ARTIFACT	GB 517481
A	11	GLU	-	CLONING ARTIFACT	GB 517481
A	12	PHE	-	CLONING ARTIFACT	GB 517481

- Molecule 2 is SUGAR (N-ACETYL-D-GLUCOSAMINE) (three-letter code: NAG) (formula: C₈H₁₅NO₆).



Mol	Chain	Residues	Atoms				ZeroOcc	AltConf
2	A	1	Total	C	N	O	0	0
			14	8	1	5		

- Molecule 3 is PHOSPHATE ION (three-letter code: PO4) (formula: O₄P).

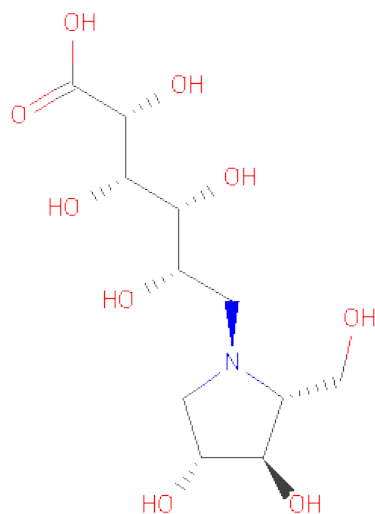


Mol	Chain	Residues	Atoms			ZeroOcc	AltConf
3	A	1	Total	O	P	0	0
			5	4	1		

- Molecule 4 is ZINC ION (three-letter code: ZN) (formula: Zn).

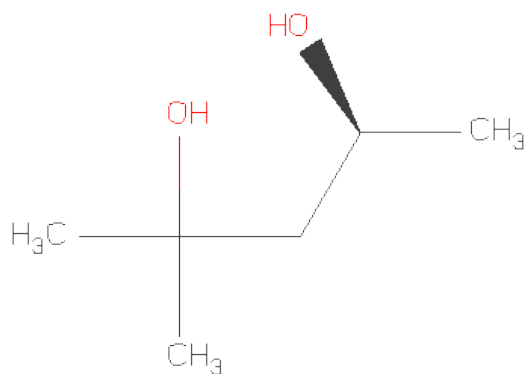
Mol	Chain	Residues	Atoms		ZeroOcc	AltConf
4	A	1	Total	Zn	0	0
			1	1		

- Molecule 5 is 6-DEOXY-6-[(2R,3R,4R)-3,4-DIHYDROXY-2-(HYDROXYMETHYL)PYRRROLIDIN-1-YL]-L-GULONICACID (three-letter code: W72) (formula: $C_{11}H_{21}NO_9$).



Mol	Chain	Residues	Atoms				ZeroOcc	AltConf
5	A	1	Total	C	N	O	0	0
			21	11	1	9		

- Molecule 6 is (4S)-2-METHYL-2,4-PENTANEDIOL (three-letter code: MPD) (formula: $C_6H_{14}O_2$).



Mol	Chain	Residues	Atoms			ZeroOcc	AltConf
6	A	1	Total	C	O	0	0
			8	6	2		

- Molecule 7 is water.

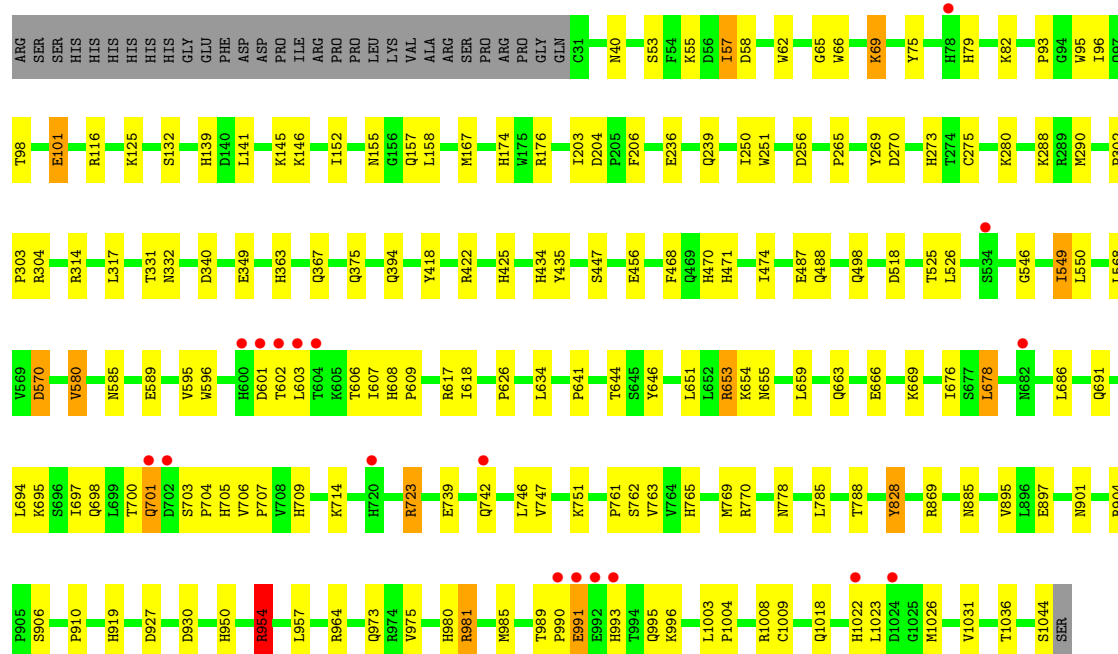
Mol	Chain	Residues	Atoms		ZeroOcc	AltConf
7	A	1048	Total	O	0	0
			1048	1048		

3 Residue-property plots

These plots are drawn for all protein, RNA and DNA chains in the entry. The first graphic for a chain summarises the proportions of errors displayed in the second graphic. The second graphic shows the sequence view annotated by issues in geometry and electron density. Residues are color-coded according to the number of geometric quality criteria for which they contain at least one outlier: green = 0, yellow = 1, orange = 2 and red = 3 or more. A red dot above a residue indicates a poor fit to the electron density ($RSRZ > 2$). Stretches of 2 or more consecutive residues without any outlier are shown as a green connector. Residues present in the sample, but not in the model, are shown in grey.

- Molecule 1: putative golgi alpha-mannosidase II

Chain A: 



4 Data and refinement statistics

Property	Value	Source
Space group	P 21 21 21	Depositor
Cell constants a, b, c, α , β , γ	68.81Å 108.64Å 137.38Å 90.00° 90.00° 90.00°	Depositor
Resolution (Å)	29.60 – 1.90 29.60 – 1.90	Depositor EDS
% Data completeness (in resolution range)	94.0 (29.60-1.90) 94.2 (29.60-1.90)	Depositor EDS
R_{merge}	0.09	Depositor
R_{sym}	(Not available)	Depositor
$\langle I/\sigma(I) \rangle$ ¹	2.32 (at 1.91Å)	Xtriage
Refinement program	CNS 1.1	Depositor
R, R_{free}	0.162 , 0.212 0.160 , 0.209	Depositor DCC
R_{free} test set	1848 reflections (2.47%)	DCC
Wilson B-factor (Å ²)	12.4	Xtriage
Anisotropy	0.225	Xtriage
Bulk solvent k_{sol} (e/Å ³), B_{sol} (Å ²)	0.33 , 36.1	EDS
Estimated twinning fraction	No twinning to report.	Xtriage
L-test for twinning	$\langle L \rangle = 0.46$, $\langle L^2 \rangle = 0.29$	Xtriage
Outliers	0 of 81792 reflections	Xtriage
F_o, F_c correlation	0.95	EDS
Total number of atoms	9313	wwPDB-VP
Average B, all atoms (Å ²)	16.0	wwPDB-VP

Xtriage's analysis on translational NCS is as follows: *The largest off-origin peak in the Patterson function is 3.81% of the height of the origin peak. No significant pseudotranslation is detected.*

¹Intensities estimated from amplitudes.

5 Model quality

5.1 Standard geometry

Bond lengths and bond angles in the following residue types are not validated in this section: PO4, ZN, MPD, NAG, W72

The Z score for a bond length (or angle) is the number of standard deviations the observed value is removed from the expected value. A bond length (or angle) with $|Z| > 5$ is considered an outlier worth inspection. RMSZ is the root-mean-square of all Z scores of the bond lengths (or angles).

Mol	Chain	Bond lengths		Bond angles	
		RMSZ	$\# Z > 5$	RMSZ	$\# Z > 5$
1	A	0.95	4/8493 (0.0%)	0.92	8/11534 (0.1%)

Chiral center outliers are detected by calculating the chiral volume of a chiral center and verifying if the center is modelled as a planar moiety or with the opposite hand. A planarity outlier is detected by checking planarity of atoms in a peptide group, atoms in a mainchain group or atoms of a sidechain that are expected to be planar.

Mol	Chain	#Chirality outliers	#Planarity outliers
1	A	0	1

All (4) bond length outliers are listed below:

Mol	Chain	Res	Type	Atoms	Z	Observed(Å)	Ideal(Å)
1	A	101	GLU	CG-CD	5.30	1.59	1.51
1	A	828	TYR	CD1-CE1	5.13	1.47	1.39
1	A	580	VAL	CB-CG1	5.10	1.63	1.52
1	A	132	SER	CB-OG	5.07	1.48	1.42

All (8) bond angle outliers are listed below:

Mol	Chain	Res	Type	Atoms	Z	Observed(°)	Ideal(°)
1	A	570	ASP	CB-CG-OD1	7.05	124.65	118.30
1	A	167	MET	N-CA-C	-6.44	93.62	111.00
1	A	422	ARG	NE-CZ-NH1	6.07	123.33	120.30
1	A	518	ASP	N-CA-C	-5.83	95.27	111.00
1	A	607	ILE	N-CA-C	-5.73	95.54	111.00
1	A	678	LEU	CA-CB-CG	5.73	128.47	115.30
1	A	763	VAL	CB-CA-C	-5.20	101.52	111.40
1	A	954	ARG	NE-CZ-NH1	5.06	122.83	120.30

There are no chirality outliers.

All (1) planarity outliers are listed below:

Mol	Chain	Res	Type	Group
1	A	646	TYR	Sidechain

5.2 Close contacts ⓘ

In the following table, the Non-H and H(model) columns list the number of non-hydrogen atoms and hydrogen atoms in the chain respectively. The H(added) column lists the number of hydrogens added by MolProbity. The Clashes column lists the number of clashes within the asymmetric unit, and the number in parentheses is this value normalized per 1000 atoms of the molecule in the chain. The Symm-Clashes column gives symmetry related clashes, in the same way as for the Clashes column.

Mol	Chain	Non-H	H(model)	H(added)	Clashes	Symm-Clashes
1	A	8216	0	7995	153	0
2	A	14	0	13	0	0
3	A	5	0	0	0	0
4	A	1	0	0	0	0
5	A	21	0	20	1	0
6	A	8	0	14	1	0
7	A	1048	0	0	33	0
All	All	9313	0	8042	153	0

Clashscore is defined as the number of clashes calculated for the entry per 1000 atoms (including hydrogens) of the entry. The overall clashscore for this entry is 9.

All (153) close contacts within the same asymmetric unit are listed below.

Atom-1	Atom-2	Distance(Å)	Clash(Å)
1:A:256:ASP:HB2	7:A:2871:HOH:O	1.46	1.15
1:A:954:ARG:HD3	1:A:981:ARG:HH21	1.06	1.08
1:A:954:ARG:HD3	1:A:981:ARG:NH2	1.70	1.06
1:A:40:ASN:HB2	7:A:2015:HOH:O	1.67	0.92
1:A:116:ARG:HD3	7:A:3035:HOH:O	1.72	0.90
1:A:954:ARG:CD	1:A:981:ARG:HH21	1.86	0.88
1:A:996:LYS:HE2	7:A:2896:HOH:O	1.75	0.85
1:A:434:HIS:HE1	1:A:930:ASP:OD1	1.60	0.84
1:A:332:ASN:H	1:A:394:GLN:HE22	1.25	0.83
1:A:701:GLN:HA	1:A:701:GLN:HE21	1.42	0.83
1:A:53[A]:SER:OG	1:A:55:LYS:HG2	1.81	0.80
1:A:742:GLN:HG3	7:A:2756:HOH:O	1.82	0.80
1:A:964:ARG:HH11	1:A:973:GLN:HE21	1.32	0.77

Continued on next page...

Continued from previous page...

Atom-1	Atom-2	Distance(Å)	Clash(Å)
1:A:601:ASP:HB2	1:A:608:HIS:CE1	2.19	0.76
1:A:989:THR:HG22	1:A:991:GLU:HG3	1.67	0.76
1:A:488:GLN:HB3	7:A:2270:HOH:O	1.86	0.75
1:A:698:GLN:HB2	1:A:705:HIS:ND1	2.03	0.74
1:A:666:GLU:HB2	7:A:2964:HOH:O	1.87	0.73
1:A:40:ASN:CB	7:A:2015:HOH:O	2.32	0.73
1:A:332:ASN:H	1:A:394:GLN:NE2	1.89	0.69
1:A:651:LEU:CD1	1:A:653:ARG:HG2	2.23	0.68
1:A:304:ARG:HH21	1:A:314:ARG:CZ	2.06	0.68
1:A:331:THR:HA	1:A:394:GLN:HE21	1.59	0.68
1:A:608:HIS:HD2	7:A:2977:HOH:O	1.78	0.67
1:A:954:ARG:CD	1:A:981:ARG:NH2	2.51	0.66
1:A:723:ARG:HH11	1:A:723:ARG:HG3	1.60	0.65
1:A:975:VAL:HG21	1:A:1003:LEU:CD1	2.26	0.65
1:A:434:HIS:HD2	1:A:927:ASP:OD1	1.79	0.65
1:A:651:LEU:HD11	1:A:653:ARG:HG2	1.80	0.64
1:A:155:ASN:HD21	1:A:157:GLN:HE21	1.45	0.64
1:A:498:GLN:HE21	1:A:526:LEU:H	1.45	0.63
1:A:739:GLU:OE1	1:A:739:GLU:HA	1.97	0.63
1:A:549:ILE:HG23	1:A:550:LEU:H	1.64	0.62
1:A:75:TYR:HE2	7:A:3027:HOH:O	1.81	0.62
1:A:139:HIS:HB2	7:A:2254:HOH:O	1.99	0.62
1:A:57:ILE:HD12	1:A:57:ILE:C	2.21	0.61
1:A:280:LYS:HE3	7:A:2669:HOH:O	2.01	0.61
1:A:950:HIS:HE1	7:A:2107:HOH:O	1.82	0.60
1:A:304:ARG:NH2	1:A:314:ARG:CZ	2.64	0.60
1:A:765:HIS:HE1	7:A:2980:HOH:O	1.84	0.59
1:A:525:THR:HG23	7:A:2302:HOH:O	2.02	0.59
1:A:141:LEU:O	1:A:146:LYS:NZ	2.31	0.58
1:A:895:VAL:HG12	1:A:897:GLU:HG3	1.86	0.57
1:A:273:HIS:HE1	6:A:2001:MPD:O4	1.88	0.57
1:A:549:ILE:HG23	1:A:550:LEU:N	2.19	0.57
1:A:290:MET:HG2	1:A:303:PRO:HG2	1.86	0.57
1:A:125:LYS:HE2	7:A:2201:HOH:O	2.03	0.56
1:A:678:LEU:HD12	1:A:769:MET:HE1	1.87	0.56
1:A:290:MET:CG	1:A:303:PRO:HG2	2.36	0.56
1:A:695:LYS:HA	1:A:709[B]:HIS:HD2	1.70	0.56
1:A:981:ARG:NH1	1:A:1031:VAL:O	2.39	0.55
1:A:761:PRO:O	1:A:762:SER:HB2	2.07	0.55
1:A:250:ILE:HB	1:A:910:PRO:HG2	1.89	0.55
1:A:435[A]:TYR:HE2	1:A:526:LEU:HD13	1.72	0.55
1:A:980:HIS:HE1	7:A:2917:HOH:O	1.91	0.54

Continued on next page...

Continued from previous page...

Atom-1	Atom-2	Distance(Å)	Clash(Å)
1:A:723:ARG:NH1	7:A:2583:HOH:O	2.40	0.53
1:A:869:ARG:HH11	1:A:885:ASN:HD22	1.55	0.53
1:A:904:ARG:HG2	1:A:985:MET:SD	2.48	0.53
1:A:602:THR:C	1:A:603:LEU:HD22	2.30	0.53
1:A:641:PRO:HG2	1:A:644:THR:HB	1.91	0.52
1:A:723:ARG:NH1	1:A:723:ARG:HG3	2.25	0.52
1:A:57:ILE:HD12	1:A:58:ASP:C	2.29	0.52
1:A:1009:CYS:HB3	1:A:1026:MET:HA	1.92	0.51
1:A:714:LYS:HD2	7:A:2751:HOH:O	2.10	0.51
1:A:695:LYS:HA	1:A:709[B]:HIS:CD2	2.44	0.51
1:A:989:THR:CG2	1:A:991:GLU:HG3	2.38	0.51
1:A:980:HIS:HD2	1:A:1036:THR:OG1	1.94	0.51
1:A:435[A]:TYR:CE2	1:A:526:LEU:HD13	2.45	0.51
1:A:155:ASN:ND2	1:A:157:GLN:HE21	2.10	0.50
1:A:79:HIS:HE1	7:A:2046:HOH:O	1.95	0.49
1:A:314:ARG:HH21	1:A:317:LEU:HD12	1.78	0.49
1:A:1018:GLN:NE2	7:A:2080:HOH:O	2.37	0.48
1:A:57:ILE:HD12	1:A:58:ASP:N	2.27	0.48
1:A:626:PRO:O	1:A:950:HIS:HD2	1.96	0.48
1:A:995:GLN:HB3	7:A:2845:HOH:O	2.14	0.48
1:A:663:GLN:NE2	7:A:2813:HOH:O	2.36	0.48
1:A:595:VAL:HG22	1:A:617:ARG:HG3	1.96	0.48
1:A:957:LEU:HD13	1:A:981:ARG:NH1	2.29	0.48
1:A:57:ILE:HD12	1:A:58:ASP:O	2.14	0.47
1:A:340:ASP:OD1	5:A:2000:W72:O13	2.32	0.47
1:A:98:THR:OG1	1:A:101:GLU:HG3	2.15	0.47
1:A:270:ASP:OD1	1:A:273:HIS:HD2	1.98	0.47
1:A:62:TRP:CD2	1:A:65:GLY:HA3	2.49	0.47
1:A:456:GLU:HB2	7:A:2280:HOH:O	2.15	0.47
1:A:993:HIS:O	1:A:993:HIS:CD2	2.67	0.47
1:A:332:ASN:N	1:A:394:GLN:NE2	2.59	0.47
1:A:676:ILE:HD13	1:A:747:VAL:HG21	1.97	0.47
1:A:363:HIS:O	1:A:367:GLN:HG2	2.15	0.46
1:A:288:LYS:HD2	1:A:349:GLU:CD	2.35	0.46
1:A:869:ARG:NH1	1:A:885:ASN:HD22	2.13	0.46
1:A:470:HIS:CD2	1:A:471:HIS:N	2.83	0.46
1:A:608:HIS:HB2	1:A:609:PRO:HD2	1.97	0.46
1:A:145:LYS:HE3	7:A:3042:HOH:O	2.15	0.46
1:A:75:TYR:CE2	7:A:3027:HOH:O	2.56	0.46
1:A:251:TRP:C	1:A:251:TRP:CD1	2.89	0.46
1:A:304:ARG:NH2	1:A:314:ARG:NH2	2.64	0.46
1:A:69:LYS:HA	7:A:2677:HOH:O	2.17	0.45

Continued on next page...

Continued from previous page...

Atom-1	Atom-2	Distance(Å)	Clash(Å)
1:A:331:THR:CA	1:A:394:GLN:HE21	2.28	0.45
1:A:698:GLN:HG2	1:A:700:THR:O	2.17	0.45
1:A:678:LEU:HD12	1:A:769:MET:CE	2.46	0.45
1:A:990:PRO:O	1:A:991:GLU:C	2.55	0.45
1:A:885:ASN:ND2	1:A:885:ASN:H	2.15	0.45
1:A:964:ARG:HH11	1:A:973:GLN:NE2	2.09	0.44
1:A:304:ARG:HH21	1:A:314:ARG:NH1	2.15	0.44
1:A:703:SER:HB2	1:A:704:PRO:HD2	1.99	0.44
1:A:601:ASP:HB2	1:A:608:HIS:ND1	2.33	0.44
1:A:651:LEU:C	1:A:651:LEU:HD13	2.38	0.44
1:A:1008:ARG:CZ	1:A:1022:HIS:CD2	3.01	0.44
1:A:602:THR:O	1:A:603:LEU:HD22	2.18	0.43
1:A:66:TRP:CZ3	1:A:239:GLN:HG3	2.53	0.43
1:A:174:HIS:CE1	1:A:176:ARG:HD3	2.53	0.43
1:A:655:ASN:CG	1:A:655:ASN:O	2.57	0.43
1:A:314:ARG:NH2	1:A:317:LEU:HD12	2.33	0.43
1:A:549:ILE:HG12	1:A:550:LEU:H	1.82	0.43
1:A:570:ASP:HA	1:A:618:ILE:O	2.18	0.43
1:A:901:ASN:HB2	7:A:2908:HOH:O	2.19	0.43
1:A:701:GLN:CA	1:A:701:GLN:HE21	2.17	0.43
1:A:686:LEU:HD22	1:A:697:ILE:HG12	2.00	0.43
1:A:568:LEU:HD12	1:A:770:ARG:HD2	2.00	0.43
1:A:785:LEU:O	1:A:788:THR:HB	2.19	0.42
1:A:765:HIS:HD2	1:A:778:ASN:OD1	2.02	0.42
1:A:601:ASP:OD1	1:A:603:LEU:HB2	2.19	0.42
1:A:425:HIS:HE1	1:A:487:GLU:OE1	2.03	0.42
1:A:206:PHE:CD1	1:A:206:PHE:N	2.87	0.42
1:A:206:PHE:HB2	1:A:418:TYR:CE1	2.54	0.42
1:A:654:LYS:O	1:A:655:ASN:HB3	2.20	0.42
1:A:40:ASN:CG	7:A:2015:HOH:O	2.56	0.42
1:A:601:ASP:C	1:A:603:LEU:H	2.23	0.42
1:A:93:PRO:HD2	1:A:470:HIS:CD2	2.54	0.42
1:A:1008:ARG:CZ	1:A:1022:HIS:NE2	2.83	0.42
1:A:546:GLY:HA3	1:A:549:ILE:HG22	2.00	0.42
1:A:468:PHE:CZ	1:A:474:ILE:HA	2.55	0.42
1:A:601:ASP:N	1:A:606:THR:O	2.51	0.42
1:A:608:HIS:CD2	7:A:2977:HOH:O	2.62	0.42
1:A:981:ARG:NE	7:A:2867:HOH:O	2.53	0.41
1:A:236:GLU:OE2	7:A:2029:HOH:O	2.22	0.41
1:A:981:ARG:HH11	1:A:981:ARG:HB2	1.84	0.41
1:A:919:HIS:HE1	7:A:2355:HOH:O	2.04	0.41
1:A:589[A]:GLU:OE2	1:A:751:LYS:HD3	2.20	0.41

Continued on next page...

Continued from previous page...

Atom-1	Atom-2	Distance(Å)	Clash(Å)
1:A:435[A]:TYR:HE2	1:A:526:LEU:CD1	2.33	0.41
1:A:580:VAL:HG22	1:A:634:LEU:HD22	2.02	0.41
1:A:434:HIS:CE1	1:A:930:ASP:OD1	2.53	0.41
1:A:55:LYS:HD3	1:A:55:LYS:HA	1.76	0.41
1:A:468:PHE:CE2	1:A:474:ILE:HA	2.56	0.41
1:A:706:VAL:HA	1:A:707:PRO:HD3	1.93	0.41
1:A:1009:CYS:SG	1:A:1023:LEU:HD12	2.61	0.41
1:A:596:TRP:CZ3	1:A:659:LEU:HD13	2.55	0.41
1:A:203:ILE:HD12	1:A:269:TYR:CG	2.56	0.41
1:A:596:TRP:CG	1:A:746:LEU:HD21	2.56	0.40
1:A:723:ARG:NH1	1:A:723:ARG:CG	2.84	0.40
1:A:152:ILE:O	1:A:155:ASN:OD1	2.40	0.40

There are no symmetry-related clashes.

5.3 Torsion angles

5.3.1 Protein backbone ⓘ

In the following table, the Percentiles column shows the percent Ramachandran outliers of the chain as a percentile score with respect to all X-ray entries followed by that with respect to entries of similar resolution. The Analysed column shows the number of residues for which the backbone conformation was analysed, and the total number of residues.

Mol	Chain	Analysed	Favoured	Allowed	Outliers	Percentiles	
1	A	1022/1045 (98%)	987 (97%)	31 (3%)	4 (0%)	43	29

All (4) Ramachandran outliers are listed below:

Mol	Chain	Res	Type
1	A	95	TRP
1	A	549	ILE
1	A	991	GLU
1	A	204	ASP

5.3.2 Protein sidechains ⓘ

In the following table, the Percentiles column shows the percent sidechain outliers of the chain as a percentile score with respect to all X-ray entries followed by that with respect to entries of similar resolution. The Analysed column shows the number of residues for which the sidechain conformation was analysed, and the total number of residues.

Mol	Chain	Analysed	Rotameric	Outliers	Percentiles	
1	A	911/929 (98%)	890 (98%)	21 (2%)	63	55

All (21) residues with a non-rotameric sidechain are listed below:

Mol	Chain	Res	Type
1	A	57	ILE
1	A	69	LYS
1	A	82	LYS
1	A	96	ILE
1	A	158	LEU
1	A	265	PRO
1	A	275	CYS
1	A	302	PRO
1	A	447	SER
1	A	585	ASN
1	A	653	ARG
1	A	669	LYS
1	A	691	GLN
1	A	701	GLN
1	A	723	ARG
1	A	828	TYR
1	A	906	SER
1	A	954	ARG
1	A	981	ARG
1	A	1004	PRO
1	A	1044	SER

Some sidechains can be flipped to improve hydrogen bonding and reduce clashes. All (31) such sidechains are listed below:

Mol	Chain	Res	Type
1	A	79	HIS
1	A	91	ASN
1	A	121	ASN
1	A	157	GLN
1	A	191	GLN
1	A	240	GLN
1	A	249	GLN
1	A	253	ASN
1	A	273	HIS
1	A	347	ASN
1	A	369	HIS
1	A	388	GLN

Continued on next page...

Continued from previous page...

Mol	Chain	Res	Type
1	A	394	GLN
1	A	425	HIS
1	A	434	HIS
1	A	460	GLN
1	A	469	GLN
1	A	470	HIS
1	A	488	GLN
1	A	498	GLN
1	A	554	HIS
1	A	701	GLN
1	A	765	HIS
1	A	809	ASN
1	A	885	ASN
1	A	901	ASN
1	A	919	HIS
1	A	950	HIS
1	A	973	GLN
1	A	980	HIS
1	A	986	GLN

5.3.3 RNA ⓘ

There are no RNA chains in this entry.

5.4 Non-standard residues in protein, DNA, RNA chains ⓘ

There are no non-standard protein/DNA/RNA residues in this entry.

5.5 Carbohydrates ⓘ

There are no carbohydrates in this entry.

5.6 Ligand geometry ⓘ

Of 5 ligands modelled in this entry, 1 is monoatomic - leaving 4 for Mogul analysis.

In the following table, the Counts columns list the number of bonds (or angles) for which Mogul statistics could be retrieved, the number of bonds (or angles) that are observed in the model and the number of bonds (or angles) that are defined in the chemical component dictionary. The Link column lists molecule types, if any, to which the group is linked. The Z score for a bond length (or angle) is the number of standard deviations the observed value is removed from the expected

value. A bond length (or angle) with $|Z| > 2$ is considered an outlier worth inspection. RMSZ is the root-mean-square of all Z scores of the bond lengths (or angles).

Mol	Type	Chain	Res	Link	Bond lengths			Bond angles		
					Counts	RMSZ	$\# Z > 2$	Counts	RMSZ	$\# Z > 2$
2	NAG	A	1047	1	12,14,15	0.69	0	15,19,21	1.00	1 (6%)
5	W72	A	2000	4	21,21,21	1.08	2 (9%)	30,30,30	3.08	14 (46%)
6	MPD	A	2001	-	7,7,7	0.52	0	10,10,10	0.61	0
3	PO4	A	2002	-	4,4,4	1.41	1 (25%)	6,6,6	0.33	0

In the following table, the Chirals column lists the number of chiral outliers, the number of chiral centers analysed, the number of these observed in the model and the number defined in the chemical component dictionary. Similar counts are reported in the Torsion and Rings columns. '-' means no outliers of that kind were identified.

Mol	Type	Chain	Res	Link	Chirals	Torsions	Rings
2	NAG	A	1047	1	-	0/6/23/26	0/1/1/1
5	W72	A	2000	4	1/1/9/9	0/22/38/38	0/1/1/1
6	MPD	A	2001	-	1/1/2/2	0/5/5/5	0/0/0/0
3	PO4	A	2002	-	-	0/0/0/0	0/0/0/0

All (3) bond length outliers are listed below:

Mol	Chain	Res	Type	Atoms	Z	Observed(Å)	Ideal(Å)
5	A	2000	W72	O12-C12	3.21	1.41	1.30
5	A	2000	W72	C3-N4	2.51	1.51	1.47
3	A	2002	PO4	P-O3	2.21	1.61	1.52

All (15) bond angle outliers are listed below:

Mol	Chain	Res	Type	Atoms	Z	Observed(°)	Ideal(°)
5	A	2000	W72	C9-C10-C11	7.11	126.48	113.71
5	A	2000	W72	O1-C1-C5	5.76	125.28	111.86
5	A	2000	W72	C8-C7-N4	-5.70	101.13	112.13
5	A	2000	W72	O2-C2-C1	5.50	121.93	111.31
5	A	2000	W72	C1-C5-N4	4.81	110.39	103.85
5	A	2000	W72	C3-N4-C5	-4.61	96.26	105.19
5	A	2000	W72	O1-C1-C2	3.83	120.98	111.75
5	A	2000	W72	O12-C12-C11	3.71	124.70	113.89
5	A	2000	W72	C3-C2-C1	3.70	107.98	103.29
5	A	2000	W72	O13-C12-C11	-3.19	111.81	121.15
5	A	2000	W72	C7-C8-C9	2.92	118.17	109.82
5	A	2000	W72	O10-C10-C9	-2.86	102.52	109.42

Continued on next page...

Continued from previous page...

Mol	Chain	Res	Type	Atoms	Z	Observed(°)	Ideal(°)
5	A	2000	W72	C7-N4-C5	-2.55	108.25	115.51
2	A	1047	NAG	C2-N2-C7	-2.53	118.85	123.09
5	A	2000	W72	O10-C10-C11	-2.23	105.10	109.19

All (2) chirality outliers are listed below:

Mol	Chain	Res	Type	Atom
6	A	2001	MPD	C4
5	A	2000	W72	C11

There are no torsion outliers.

There are no ring outliers.

5.7 Other polymers ⓘ

There are no such residues in this entry.

5.8 Polymer linkage issues

There are no chain breaks in this entry.

6 Fit of model and data ⓘ

6.1 Protein, DNA and RNA chains ⓘ

In the following table, the column labelled ‘#RSRZ> 2’ contains the number (and percentage) of RSRZ outliers, followed by percent RSRZ outliers for the chain as percentile scores relative to all X-ray entries and entries of similar resolution. The OWAB column contains the minimum, median, 95th percentile and maximum values of the occupancy-weighted average B-factor per residue. The column labelled ‘Q< 0.9’ lists the number of (and percentage) of residues with an average occupancy less than 0.9.

Mol	Chain	Analysed	<RSRZ>	#RSRZ>2	OWAB(Å ²)	Q<0.9
1	A	1014/1045 (97%)	-0.25	18 (1%) 65 67	4, 13, 31, 66	0

All (18) RSRZ outliers are listed below:

Mol	Chain	Res	Type	RSRZ
1	A	993	HIS	5.2
1	A	603	LEU	5.0
1	A	991	GLU	4.5
1	A	602	THR	4.4
1	A	604	THR	4.1
1	A	990	PRO	4.0
1	A	601	ASP	3.8
1	A	600	HIS	3.7
1	A	78	HIS	3.4
1	A	720	HIS	3.4
1	A	742	GLN	2.8
1	A	701	GLN	2.7
1	A	992	GLU	2.5
1	A	702	ASP	2.4
1	A	1022	HIS	2.3
1	A	534	SER	2.3
1	A	1024	ASP	2.3
1	A	682	ASN	2.1

6.2 Non-standard residues in protein, DNA, RNA chains ⓘ

There are no non-standard protein/DNA/RNA residues in this entry.

6.3 Carbohydrates ⓘ

There are no carbohydrates in this entry.

6.4 Ligands ⓘ

In the following table, the Atoms column lists the number of modelled atoms in the group and the number defined in the chemical component dictionary. LLDF column lists the quality of electron density of the group with respect to its neighbouring residues in protein, DNA or RNA chains. The B-factors column lists the minimum, median, 95th percentile and maximum values of B factors of atoms in the group. The column labelled 'Q < 0.9' lists the number of atoms with occupancy less than 0.9.

Mol	Type	Chain	Res	Atoms	RSR	LLDF	B-factors(Å ²)	Q<0.9
5	W72	A	2000	21/21	0.17	9.43	9,19,42,44	0
6	MPD	A	2001	8/8	0.15	2.76	19,20,23,23	0
3	PO4	A	2002	5/5	0.14	2.22	41,41,43,43	0
4	ZN	A	2003	1/1	0.04	-2.47	10,10,10,10	0
2	NAG	A	1047	14/15	0.32	-	38,44,46,46	0

6.5 Other polymers ⓘ

There are no such residues in this entry.