



Full wwPDB X-ray Structure Validation Report

Feb 26, 2014 – 10:28 PM GMT

PDB ID : 1G0H
Title : CRYSTAL STRUCTURE OF MJ0109 GENE PRODUCT INOSITOL MONOPHOSPHATASE-FRUCTOSE1,6 BISPHOSPHATASE
Authors : Johnson, K.A.; Chen, L.; Yang, H.; Roberts, M.F.; Stec, B.
Deposited on : 2000-10-06
Resolution : 2.30 Å(reported)

This is a full wwPDB validation report for a publicly released PDB entry.
We welcome your comments at validation@mail.wwpdb.org
A user guide is available at <http://wwpdb.org/ValidationPDFNotes.html>

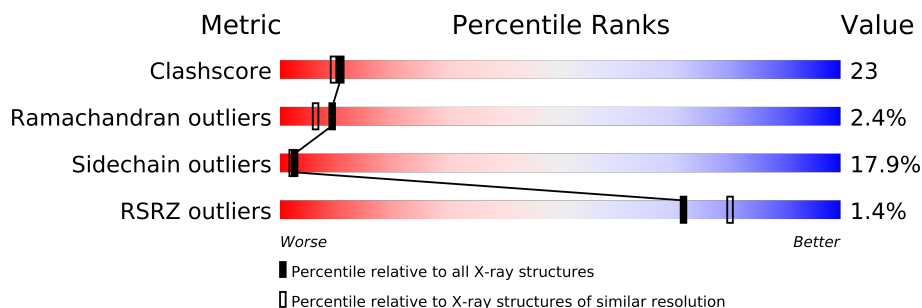
The following versions of software and data (see [references](#)) were used in the production of this report:

MolProbity : 4.02b-467
Mogul : 1.15 2013
Xtriage (Phenix) : dev-1323
EDS : stable22639
Percentile statistics : 21963
Refmac : 5.8.0049
CCP4 : 6.3.0 (Settle)
Ideal geometry (proteins) : Engh & Huber (2001)
Ideal geometry (DNA, RNA) : Parkinson et. al. (1996)
Validation Pipeline (wwPDB-VP) : stable22683

1 Overall quality at a glance

The reported resolution of this entry is 2.30 Å.

Percentile scores (ranging between 0-100) for global validation metrics of the entry are shown in the following graphic. The table shows the number of entries on which the scores are based.



Metric	Whole archive (#Entries)	Similar resolution (#Entries, resolution range(Å))
Clashscore	79885	3679 (2.30-2.30)
Ramachandran outliers	78287	3642 (2.30-2.30)
Sidechain outliers	78261	3641 (2.30-2.30)
RSRZ outliers	66119	2930 (2.30-2.30)

The table below summarises the geometric issues observed across the polymeric chains and their fit to the electron density. The red, orange, yellow and green segments on the lower bar indicate the fraction of residues that contain outliers for ≥ 3 , 2, 1 and 0 types of geometric quality criteria. The upper red bar (where present) indicates the fraction of residues that have poor fit to the electron density.

Mol	Chain	Length	Quality of chain
1	A	252	
1	B	252	

2 Entry composition i

There are 4 unique types of molecules in this entry. The entry contains 4150 atoms, of which 0 are hydrogen and 0 are deuterium.

In the tables below, the ZeroOcc column contains the number of atoms modelled with zero occupancy, the AltConf column contains the number of residues with at least one atom in alternate conformation and the Trace column contains the number of residues modelled with at most 2 atoms.

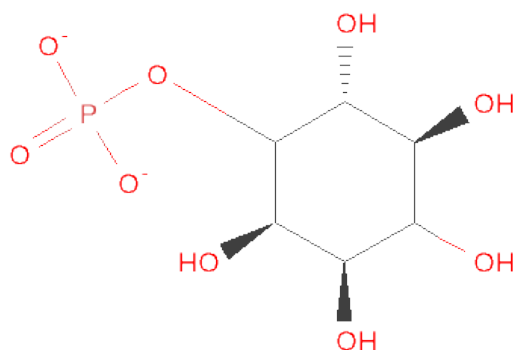
- Molecule 1 is a protein called INOSITOL MONOPHOSPHATASE.

Mol	Chain	Residues	Atoms					ZeroOcc	AltConf	Trace
1	A	252	Total	C	N	O	S	0	0	0
			2018	1309	321	382	6			
1	B	252	Total	C	N	O	S	0	0	0
			2018	1309	321	382	6			

- Molecule 2 is CALCIUM ION (three-letter code: CA) (formula: Ca).

Mol	Chain	Residues	Atoms		ZeroOcc	AltConf
2	B	2	Total	Ca	0	0
			2	2		
2	A	2	Total	Ca	0	0
			2	2		

- Molecule 3 is D-MYO-INOSITOL-1-PHOSPHATE (three-letter code: IPD) (formula: C₆H₁₁O₉P).



Mol	Chain	Residues	Atoms				ZeroOcc	AltConf
3	A	1	Total	C	O	P	0	0
			16	6	9	1		
3	B	1	Total	C	O	P	0	0
			16	6	9	1		

- Molecule 4 is water.

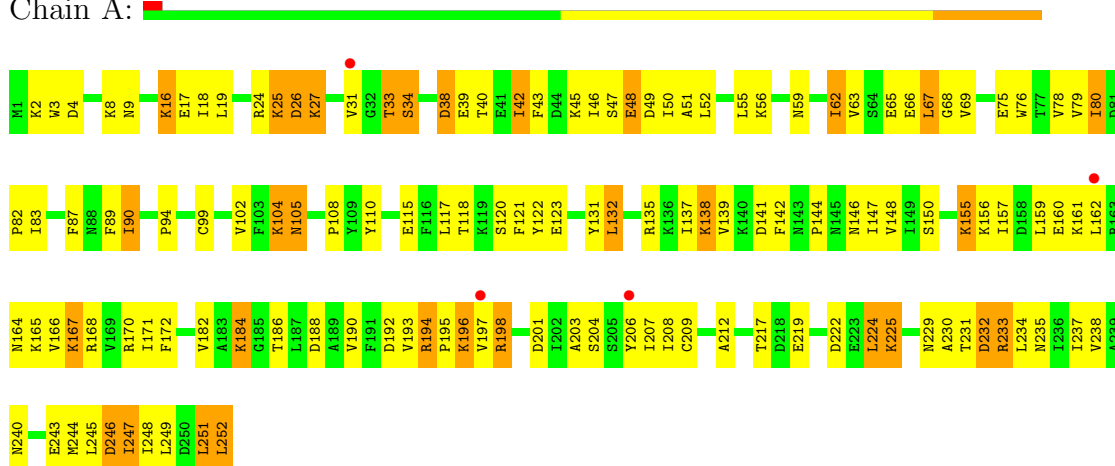
Mol	Chain	Residues	Atoms		ZeroOcc	AltConf
4	A	35	Total	O	0	0
			35	35		
4	B	43	Total	O	0	0
			43	43		

3 Residue-property plots

These plots are drawn for all protein, RNA and DNA chains in the entry. The first graphic for a chain summarises the proportions of errors displayed in the second graphic. The second graphic shows the sequence view annotated by issues in geometry and electron density. Residues are color-coded according to the number of geometric quality criteria for which they contain at least one outlier: green = 0, yellow = 1, orange = 2 and red = 3 or more. A red dot above a residue indicates a poor fit to the electron density ($RSRZ > 2$). Stretches of 2 or more consecutive residues without any outlier are shown as a green connector. Residues present in the sample, but not in the model, are shown in grey.

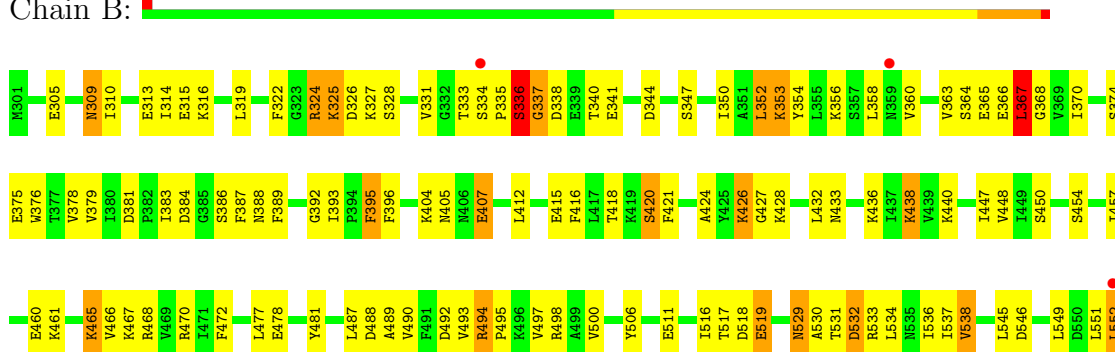
• Molecule 1: INOSITOL MONOPHOSPHATASE

Chain A:



• Molecule 1: INOSITOL MONOPHOSPHATASE

Chain B:



4 Data and refinement statistics

Property	Value	Source
Space group	P 21 21 21	Depositor
Cell constants a, b, c, α , β , γ	65.18Å 75.89Å 131.81Å 90.00° 90.00° 90.00°	Depositor
Resolution (Å)	12.00 – 2.30 58.43 – 2.23	Depositor EDS
% Data completeness (in resolution range)	97.4 (12.00-2.30) 92.6 (58.43-2.23)	Depositor EDS
R_{merge}	0.07	Depositor
R_{sym}	(Not available)	Depositor
$\langle I/\sigma(I) \rangle$ ¹	0.78 (at 2.25Å)	Xtriage
Refinement program	SHELXL-97	Depositor
R, R_{free}	0.224 , 0.279 0.221 , (Not available)	Depositor DCC
R_{free} test set	No test flags present.	DCC
Wilson B-factor (Å ²)	35.6	Xtriage
Anisotropy	0.232	Xtriage
Bulk solvent k_{sol} (e/Å ³), B_{sol} (Å ²)	0.29 , 125.2	EDS
Estimated twinning fraction	No twinning to report.	Xtriage
L-test for twinning	$\langle L \rangle = 0.51$, $\langle L^2 \rangle = 0.34$	Xtriage
Outliers	1 of 30029 reflections (0.003%)	Xtriage
F_o, F_c correlation	0.94	EDS
Total number of atoms	4150	wwPDB-VP
Average B, all atoms (Å ²)	53.0	wwPDB-VP

Xtriage's analysis on translational NCS is as follows: *The largest off-origin peak in the Patterson function is 4.96% of the height of the origin peak. No significant pseudotranslation is detected.*

¹Intensities estimated from amplitudes.

5 Model quality

5.1 Standard geometry

Bond lengths and bond angles in the following residue types are not validated in this section: CA, IPD

The Z score for a bond length (or angle) is the number of standard deviations the observed value is removed from the expected value. A bond length (or angle) with $|Z| > 5$ is considered an outlier worth inspection. RMSZ is the root-mean-square of all Z scores of the bond lengths (or angles).

Mol	Chain	Bond lengths		Bond angles	
		RMSZ	$\# Z > 5$	RMSZ	$\# Z > 5$
1	A	0.31	0/2058	0.88	0/2774
1	B	0.31	0/2058	0.88	0/2774
All	All	0.31	0/4116	0.88	0/5548

There are no bond length outliers.

There are no bond angle outliers.

There are no chirality outliers.

There are no planarity outliers.

5.2 Close contacts

In the following table, the Non-H and H(model) columns list the number of non-hydrogen atoms and hydrogen atoms in the chain respectively. The H(added) column lists the number of hydrogens added by MolProbity. The Clashes column lists the number of clashes within the asymmetric unit, and the number in parentheses is this value normalized per 1000 atoms of the molecule in the chain. The Symm-Clashes column gives symmetry related clashes, in the same way as for the Clashes column.

Mol	Chain	Non-H	H(model)	H(added)	Clashes	Symm-Clashes
1	A	2018	0	2035	99	0
1	B	2018	0	2032	88	0
2	A	2	0	0	0	0
2	B	2	0	0	0	0
3	A	16	0	11	1	0
3	B	16	0	11	0	0
4	A	35	0	0	1	0
4	B	43	0	0	3	0
All	All	4150	0	4089	186	0

Clashscore is defined as the number of clashes calculated for the entry per 1000 atoms (including hydrogens) of the entry. The overall clashscore for this entry is 23.

All (186) close contacts within the same asymmetric unit are listed below.

Atom-1	Atom-2	Distance(Å)	Clash(Å)
1:A:161:LYS:HB3	1:A:251:LEU:HD21	1.66	0.77
1:B:352:LEU:HD23	1:B:356:LYS:HE2	1.67	0.76
1:A:63:VAL:HG22	1:A:69:VAL:HG22	1.70	0.74
1:A:87:PHE:HB3	4:A:625:HOH:O	1.88	0.72
1:A:243:GLU:O	1:A:246:ASP:HB2	1.91	0.71
1:A:193:VAL:HG11	1:A:252:LEU:HD22	1.73	0.71
1:B:450:SER:HB3	1:B:490:VAL:HG23	1.73	0.71
1:B:493:VAL:HG11	1:B:552:LEU:HD21	1.72	0.70
1:B:426:LYS:HE2	1:B:427:GLY:N	2.07	0.69
1:A:118:THR:HG23	1:A:120:SER:OG	1.92	0.69
1:B:368:GLY:HA2	1:B:530:ALA:HB3	1.75	0.67
1:B:478:GLU:O	1:B:481:TYR:HB2	1.95	0.66
1:B:324:ARG:HD3	1:B:327:LYS:HD3	1.76	0.66
1:A:18:ILE:HD13	1:A:83:ILE:HD11	1.78	0.65
1:B:340:THR:HG23	1:B:366:GLU:HG2	1.79	0.64
1:B:407:GLU:OE1	1:B:407:GLU:HA	1.97	0.64
1:A:26:ASP:OD1	1:A:27:LYS:HG3	1.98	0.64
1:B:334:SER:HB3	1:B:366:GLU:HG3	1.80	0.64
1:A:76:TRP:CZ2	1:A:104:LYS:HG3	2.34	0.63
1:B:313:GLU:HG2	1:B:350:ILE:HG21	1.81	0.62
1:A:194:ARG:NH2	1:A:196:LYS:HB2	2.14	0.62
1:B:448:VAL:HG22	1:B:468:ARG:HB2	1.81	0.62
1:A:193:VAL:O	1:A:195:PRO:HD3	1.99	0.61
1:A:231:THR:O	1:A:232:ASP:HB2	2.01	0.61
1:A:192:ASP:OD1	1:A:194:ARG:HG3	2.00	0.61
1:A:115:GLU:HG2	1:A:118:THR:HG22	1.84	0.60
1:B:518:ASP:HB2	1:B:519:GLU:OE1	2.02	0.59
1:B:461:LYS:O	1:B:465:LYS:HG2	2.03	0.59
1:A:247:ILE:O	1:A:251:LEU:HD12	2.02	0.59
1:A:108:PRO:HB3	1:A:207:ILE:HG12	1.83	0.59
1:B:315:GLU:HG3	1:B:416:PHE:HD2	1.68	0.58
3:A:292:IPD:O8	3:A:292:IPD:O6	2.22	0.58
1:B:381:ASP:HB2	1:B:500:VAL:HG12	1.85	0.58
1:B:305:GLU:O	1:B:309:ASN:HB2	2.04	0.58
1:B:333:THR:HG23	1:B:337:GLY:HA2	1.84	0.58
1:A:155:LYS:H	1:A:155:LYS:HD2	1.68	0.58
1:A:252:LEU:HG	1:A:252:LEU:OXT	2.02	0.58
1:A:8:LYS:HG2	1:A:121:PHE:CE2	2.38	0.57
1:B:388:ASN:HB3	1:B:393:ILE:HB	1.86	0.57

Continued on next page...

Continued from previous page...

Atom-1	Atom-2	Distance(Å)	Clash(Å)
1:A:234:LEU:HD12	1:A:234:LEU:O	2.04	0.57
1:A:150:SER:O	1:A:190:VAL:HA	2.05	0.56
1:A:147:ILE:HA	1:A:188:ASP:OD1	2.06	0.56
1:B:498:ARG:HH11	1:B:498:ARG:HG3	1.71	0.56
1:B:352:LEU:HD23	1:B:356:LYS:CE	2.35	0.56
1:B:324:ARG:HD3	1:B:327:LYS:CD	2.35	0.56
1:B:440:LYS:HD3	1:B:488:ASP:OD2	2.06	0.56
1:B:492:ASP:OD1	1:B:494:ARG:HG3	2.05	0.55
1:B:517:THR:HG21	1:B:545:LEU:HD21	1.88	0.55
1:B:333:THR:CG2	1:B:337:GLY:HA2	2.37	0.55
1:A:194:ARG:HD2	1:A:194:ARG:O	2.07	0.55
1:A:68:GLY:HA2	1:A:230:ALA:CB	2.37	0.55
1:B:450:SER:CB	1:B:490:VAL:HG23	2.37	0.54
1:A:47:SER:OG	1:A:82:PRO:HB2	2.08	0.54
1:B:367:LEU:HD11	1:B:370:ILE:HD11	1.89	0.54
1:B:325:LYS:HG3	1:B:325:LYS:O	2.07	0.54
1:A:24:ARG:HB3	1:A:27:LYS:HD2	1.90	0.53
1:A:55:LEU:CD1	1:A:78:VAL:HG11	2.38	0.53
1:A:18:ILE:O	1:A:89:PHE:HZ	1.90	0.53
1:A:76:TRP:CZ3	1:A:104:LYS:HB2	2.44	0.52
1:B:367:LEU:HG	1:B:367:LEU:O	2.09	0.52
1:B:313:GLU:HG2	1:B:350:ILE:CG2	2.39	0.52
1:A:108:PRO:CB	1:A:207:ILE:HG12	2.39	0.52
1:A:165:LYS:HD2	1:A:247:ILE:HG23	1.91	0.51
1:B:395:PHE:CD1	1:B:472:PHE:HB3	2.46	0.51
1:B:334:SER:CB	1:B:366:GLU:HG3	2.40	0.51
1:B:494:ARG:O	1:B:494:ARG:HD2	2.10	0.51
1:A:224:LEU:HG	1:A:225:LYS:N	2.25	0.51
1:B:447:ILE:HG21	1:B:466:VAL:HG12	1.93	0.51
1:B:384:ASP:O	1:B:396:PHE:HA	2.11	0.50
1:B:447:ILE:HB	1:B:466:VAL:HA	1.93	0.50
1:B:353:LYS:HE2	1:B:354:TYR:CE1	2.46	0.50
1:B:531:THR:O	1:B:532:ASP:O	2.30	0.50
1:A:204:SER:O	1:A:208:ILE:HG13	2.12	0.50
1:A:192:ASP:OD1	1:A:194:ARG:O	2.30	0.50
1:B:386:SER:O	1:B:389:PHE:HB3	2.12	0.49
1:B:322:PHE:CE2	1:B:392:GLY:HA2	2.48	0.49
1:B:412:LEU:HD11	1:B:421:PHE:HD2	1.77	0.49
1:A:139:VAL:HB	1:A:240:ASN:HB2	1.96	0.48
1:A:43:PHE:HE2	1:A:90:ILE:HG12	1.78	0.48
1:A:217:THR:HG21	1:A:245:LEU:HD22	1.95	0.48
1:A:147:ILE:HG21	1:A:166:VAL:HG12	1.95	0.48

Continued on next page...

Continued from previous page...

Atom-1	Atom-2	Distance(Å)	Clash(Å)
1:A:42:ILE:O	1:A:42:ILE:HD12	2.13	0.48
1:B:531:THR:HG22	1:B:532:ASP:H	1.78	0.48
1:A:94:PRO:CB	1:A:117:LEU:HD12	2.44	0.47
1:A:40:THR:OG1	1:A:66:GLU:HG2	2.13	0.47
1:A:24:ARG:CB	1:A:27:LYS:HD2	2.43	0.47
1:A:24:ARG:CD	1:A:27:LYS:HD2	2.44	0.47
1:A:104:LYS:O	1:A:105:ASN:HB2	2.14	0.47
1:B:432:LEU:O	1:B:433:ASN:HB2	2.13	0.47
1:A:76:TRP:CH2	1:A:104:LYS:HG3	2.49	0.47
1:B:490:VAL:HG12	1:B:538:VAL:HG22	1.95	0.47
1:A:33:THR:HA	1:A:38:ASP:O	2.15	0.47
1:A:245:LEU:HG	1:A:249:LEU:HD12	1.97	0.47
1:B:376:TRP:CZ3	1:B:404:LYS:HB2	2.50	0.47
1:A:68:GLY:HA2	1:A:230:ALA:HB3	1.97	0.47
1:A:24:ARG:HE	1:A:27:LYS:HD2	1.80	0.46
1:B:537:ILE:HG21	1:B:545:LEU:HD13	1.97	0.46
1:A:203:ALA:O	1:A:206:TYR:HB3	2.15	0.46
1:A:138:LYS:HA	1:A:138:LYS:HD2	1.79	0.46
1:A:131:TYR:HA	1:A:135:ARG:O	2.16	0.46
1:A:138:LYS:HD2	1:A:212:ALA:O	2.16	0.46
1:A:233:ARG:HG2	1:A:233:ARG:HH21	1.80	0.46
1:B:360:VAL:HG21	1:B:378:VAL:HG23	1.98	0.46
1:A:194:ARG:HH21	1:A:196:LYS:HB2	1.80	0.46
1:B:388:ASN:CB	1:B:393:ILE:HB	2.46	0.46
1:B:454:SER:HB3	1:B:493:VAL:O	2.16	0.46
1:A:155:LYS:H	1:A:155:LYS:CD	2.29	0.46
1:A:142:PHE:HE1	1:A:144:PRO:HB3	1.81	0.45
1:A:55:LEU:HD11	1:A:78:VAL:HG11	1.98	0.45
1:A:122:TYR:CE2	1:A:132:LEU:HG	2.51	0.45
1:A:197:VAL:CG2	1:A:201:ASP:HB2	2.46	0.45
1:A:244:MET:HE3	1:A:248:ILE:HG13	1.99	0.45
1:B:340:THR:CG2	1:B:366:GLU:HG2	2.45	0.45
1:B:341:GLU:O	1:B:344:ASP:HB2	2.16	0.45
1:A:246:ASP:O	1:A:249:LEU:N	2.50	0.45
1:A:3:TRP:CD2	1:A:102:VAL:HG11	2.52	0.45
1:A:120:SER:HB3	1:A:132:LEU:HD21	1.98	0.45
1:B:519:GLU:OE1	1:B:519:GLU:N	2.50	0.45
1:A:160:GLU:O	1:A:164:ASN:HB2	2.17	0.45
1:A:8:LYS:HG2	1:A:121:PHE:CD2	2.51	0.44
1:B:529:ASN:ND2	1:B:531:THR:O	2.50	0.44
1:A:16:LYS:NZ	1:A:17:GLU:OE2	2.48	0.44
1:B:365:GLU:HB2	1:B:500:VAL:HG11	1.98	0.44

Continued on next page...

Continued from previous page...

Atom-1	Atom-2	Distance(Å)	Clash(Å)
1:B:336:SER:OG	1:B:337:GLY:N	2.50	0.44
1:B:531:THR:HG22	1:B:532:ASP:N	2.33	0.44
1:A:25:LYS:HB3	1:A:25:LYS:HE3	1.58	0.44
1:B:457:ILE:N	1:B:457:ILE:HD12	2.33	0.44
1:B:438:LYS:NZ	4:B:649:HOH:O	2.50	0.44
1:B:358:LEU:N	1:B:358:LEU:HD23	2.32	0.44
1:B:506:TYR:CD1	1:B:516:ILE:HD13	2.53	0.44
1:A:8:LYS:NZ	1:A:123:GLU:OE2	2.50	0.43
1:B:546:ASP:O	1:B:549:LEU:N	2.50	0.43
1:B:363:VAL:HB	1:B:379:VAL:HG22	1.99	0.43
1:B:324:ARG:HH11	1:B:324:ARG:HB3	1.82	0.43
1:A:55:LEU:HD13	1:A:78:VAL:HG11	2.00	0.43
1:B:314:ILE:HD13	1:B:347:SER:HB2	1.99	0.43
1:A:182:VAL:HG11	1:A:238:VAL:HG12	2.00	0.43
1:B:324:ARG:NH1	1:B:326:ASP:OD2	2.51	0.43
1:A:55:LEU:HD13	1:A:62:ILE:HG23	1.99	0.43
1:A:3:TRP:CE2	1:A:102:VAL:HG11	2.54	0.43
1:A:171:ILE:O	1:B:470:ARG:HA	2.18	0.43
1:B:367:LEU:HD21	1:B:370:ILE:HG13	2.01	0.43
1:B:360:VAL:HB	1:B:376:TRP:O	2.18	0.43
1:B:438:LYS:HB3	1:B:438:LYS:HE2	1.48	0.43
1:B:532:ASP:OD2	1:B:532:ASP:O	2.35	0.43
1:A:31:VAL:HG11	1:A:42:ILE:HA	2.01	0.43
1:A:171:ILE:O	1:A:171:ILE:HG22	2.19	0.43
1:A:159:LEU:HD13	4:B:669:HOH:O	2.19	0.43
1:B:467:LYS:HG3	1:B:467:LYS:O	2.19	0.43
1:A:4:ASP:HA	1:A:110:TYR:CE1	2.53	0.43
1:B:497:VAL:HG21	1:B:536:ILE:HG21	2.00	0.43
1:B:415:GLU:HG3	1:B:477:LEU:CD1	2.49	0.43
1:A:24:ARG:NE	1:A:27:LYS:HD2	2.35	0.42
1:A:170:ARG:HB3	1:A:172:PHE:CZ	2.55	0.42
1:B:468:ARG:NH2	4:B:623:HOH:O	2.52	0.42
1:A:237:ILE:HD13	1:A:248:ILE:HG21	2.00	0.42
1:A:48:GLU:HG3	1:A:52:LEU:HD13	2.00	0.42
1:A:197:VAL:HG22	1:A:198:ARG:N	2.34	0.42
1:A:110:TYR:OH	1:A:123:GLU:OE1	2.30	0.42
1:B:488:ASP:O	1:B:489:ALA:HB2	2.20	0.42
1:A:209:CYS:O	1:A:212:ALA:HB3	2.20	0.42
1:B:418:THR:HG22	1:B:420:SER:OG	2.19	0.42
1:A:50:ILE:HG22	1:A:51:ALA:N	2.33	0.42
1:B:424:ALA:HB1	1:B:511:GLU:HG3	2.02	0.42
1:B:386:SER:O	1:B:389:PHE:N	2.52	0.42

Continued on next page...

Continued from previous page...

Atom-1	Atom-2	Distance(Å)	Clash(Å)
1:A:80:ILE:HA	1:A:99:CYS:O	2.20	0.42
1:A:157:ILE:HD11	1:A:193:VAL:HG21	2.00	0.42
1:A:75:GLU:O	1:A:105:ASN:N	2.49	0.41
1:A:42:ILE:O	1:A:46:ILE:HD12	2.20	0.41
1:B:447:ILE:CG2	1:B:466:VAL:HG12	2.50	0.41
1:B:454:SER:H	1:B:493:VAL:HG23	1.86	0.41
1:B:498:ARG:NH1	1:B:498:ARG:HG3	2.34	0.41
1:B:360:VAL:HG12	1:B:376:TRP:HB2	2.02	0.41
1:A:235:ASN:H	1:A:235:ASN:HD22	1.69	0.41
1:A:18:ILE:CD1	1:A:83:ILE:HD11	2.48	0.41
1:A:34:SER:N	1:A:38:ASP:O	2.50	0.41
1:A:233:ARG:NH2	1:A:233:ARG:HG2	2.35	0.41
1:A:167:LYS:HG2	1:A:168:ARG:HG3	2.02	0.41
1:B:315:GLU:HG3	1:B:416:PHE:CD2	2.51	0.41
1:A:148:VAL:HG21	1:B:387:PHE:HZ	1.85	0.40
1:B:367:LEU:HD21	1:B:370:ILE:CD1	2.51	0.40
1:A:233:ARG:H	1:A:233:ARG:HG3	1.59	0.40
1:B:310:ILE:O	1:B:314:ILE:HG13	2.21	0.40
1:A:196:LYS:HD3	1:A:196:LYS:HA	1.64	0.40
1:B:457:ILE:HD12	1:B:457:ILE:H	1.86	0.40
1:A:184:LYS:HE3	1:A:186:THR:OG1	2.21	0.40

There are no symmetry-related clashes.

5.3 Torsion angles

5.3.1 Protein backbone ⓘ

In the following table, the Percentiles column shows the percent Ramachandran outliers of the chain as a percentile score with respect to all X-ray entries followed by that with respect to entries of similar resolution. The Analysed column shows the number of residues for which the backbone conformation was analysed, and the total number of residues.

Mol	Chain	Analysed	Favoured	Allowed	Outliers	Percentiles	
1	A	250/252 (99%)	214 (86%)	30 (12%)	6 (2%)	9	6
1	B	250/252 (99%)	227 (91%)	17 (7%)	6 (2%)	9	6
All	All	500/504 (99%)	441 (88%)	47 (9%)	12 (2%)	9	6

All (12) Ramachandran outliers are listed below:

Mol	Chain	Res	Type
1	B	336	SER
1	B	532	ASP
1	B	337	GLY
1	B	367	LEU
1	B	495	PRO
1	A	65	GLU
1	A	67	LEU
1	A	232	ASP
1	A	246	ASP
1	B	335	PRO
1	A	156	LYS
1	A	247	ILE

5.3.2 Protein sidechains ⓘ

In the following table, the Percentiles column shows the percent sidechain outliers of the chain as a percentile score with respect to all X-ray entries followed by that with respect to entries of similar resolution. The Analysed column shows the number of residues for which the sidechain conformation was analysed, and the total number of residues.

Mol	Chain	Analysed	Rotameric	Outliers	Percentiles	
1	A	221/221 (100%)	177 (80%)	44 (20%)	2	1
1	B	221/221 (100%)	186 (84%)	35 (16%)	4	3
All	All	442/442 (100%)	363 (82%)	79 (18%)	2	2

All (79) residues with a non-rotameric sidechain are listed below:

Mol	Chain	Res	Type
1	A	2	LYS
1	A	9	ASN
1	A	16	LYS
1	A	19	LEU
1	A	25	LYS
1	A	26	ASP
1	A	27	LYS
1	A	33	THR
1	A	34	SER
1	A	38	ASP
1	A	39	GLU
1	A	42	ILE
1	A	45	LYS
1	A	48	GLU

Continued on next page...

Continued from previous page...

Mol	Chain	Res	Type
1	A	49	ASP
1	A	56	LYS
1	A	59	ASN
1	A	62	ILE
1	A	67	LEU
1	A	79	VAL
1	A	80	ILE
1	A	90	ILE
1	A	104	LYS
1	A	105	ASN
1	A	132	LEU
1	A	137	ILE
1	A	138	LYS
1	A	141	ASP
1	A	146	ASN
1	A	155	LYS
1	A	162	LEU
1	A	167	LYS
1	A	184	LYS
1	A	194	ARG
1	A	196	LYS
1	A	198	ARG
1	A	219	GLU
1	A	222	ASP
1	A	224	LEU
1	A	225	LYS
1	A	229	ASN
1	A	233	ARG
1	A	251	LEU
1	A	252	LEU
1	B	309	ASN
1	B	316	LYS
1	B	319	LEU
1	B	324	ARG
1	B	325	LYS
1	B	328	SER
1	B	331	VAL
1	B	336	SER
1	B	338	ASP
1	B	352	LEU
1	B	353	LYS
1	B	364	SER

Continued on next page...

Continued from previous page...

Mol	Chain	Res	Type
1	B	367	LEU
1	B	374	SER
1	B	375	GLU
1	B	383	ILE
1	B	395	PHE
1	B	405	ASN
1	B	407	GLU
1	B	420	SER
1	B	426	LYS
1	B	428	LYS
1	B	436	LYS
1	B	438	LYS
1	B	460	GLU
1	B	465	LYS
1	B	487	LEU
1	B	494	ARG
1	B	519	GLU
1	B	529	ASN
1	B	533	ARG
1	B	534	LEU
1	B	538	VAL
1	B	551	LEU
1	B	552	LEU

Some sidechains can be flipped to improve hydrogen bonding and reduce clashes. All (9) such sidechains are listed below:

Mol	Chain	Res	Type
1	A	59	ASN
1	A	220	ASN
1	A	229	ASN
1	A	235	ASN
1	B	372	ASN
1	B	445	ASN
1	B	446	ASN
1	B	529	ASN
1	B	535	ASN

5.3.3 RNA ⓘ

There are no RNA chains in this entry.

5.4 Non-standard residues in protein, DNA, RNA chains ⓘ

There are no non-standard protein/DNA/RNA residues in this entry.

5.5 Carbohydrates ⓘ

There are no carbohydrates in this entry.

5.6 Ligand geometry ⓘ

Of 6 ligands modelled in this entry, 4 are monoatomic - leaving 2 for Mogul analysis.

In the following table, the Counts columns list the number of bonds (or angles) for which Mogul statistics could be retrieved, the number of bonds (or angles) that are observed in the model and the number of bonds (or angles) that are defined in the chemical component dictionary. The Link column lists molecule types, if any, to which the group is linked. The Z score for a bond length (or angle) is the number of standard deviations the observed value is removed from the expected value. A bond length (or angle) with $|Z| > 2$ is considered an outlier worth inspection. RMSZ is the root-mean-square of all Z scores of the bond lengths (or angles).

Mol	Type	Chain	Res	Link	Bond lengths			Bond angles		
					Counts	RMSZ	$\# Z > 2$	Counts	RMSZ	$\# Z > 2$
3	IPD	A	292	2	16,16,16	1.30	1 (6%)	25,25,25	0.99	1 (4%)
3	IPD	B	592	2	16,16,16	1.26	1 (6%)	25,25,25	1.10	2 (8%)

In the following table, the Chirals column lists the number of chiral outliers, the number of chiral centers analysed, the number of these observed in the model and the number defined in the chemical component dictionary. Similar counts are reported in the Torsion and Rings columns. '-' means no outliers of that kind were identified.

Mol	Type	Chain	Res	Link	Chirals	Torsions	Rings
3	IPD	A	292	2	-	0/5/29/29	0/1/1/1
3	IPD	B	592	2	-	0/5/29/29	0/1/1/1

All (2) bond length outliers are listed below:

Mol	Chain	Res	Type	Atoms	Z	Observed(Å)	Ideal(Å)
3	B	592	IPD	C2-C1	2.31	1.59	1.52
3	A	292	IPD	C2-C1	2.30	1.59	1.52

All (3) bond angle outliers are listed below:

Mol	Chain	Res	Type	Atoms	Z	Observed($^{\circ}$)	Ideal($^{\circ}$)
3	A	292	IPD	O1-P1-O7	2.44	113.00	106.00
3	B	592	IPD	O9-P1-O8	-2.20	108.11	112.88
3	B	592	IPD	O1-P1-O7	2.20	112.30	106.00

There are no chirality outliers.

There are no torsion outliers.

There are no ring outliers.

5.7 Other polymers ⓘ

There are no such residues in this entry.

5.8 Polymer linkage issues

There are no chain breaks in this entry.

6 Fit of model and data ⓘ

6.1 Protein, DNA and RNA chains ⓘ

In the following table, the column labelled ‘#RSRZ> 2’ contains the number (and percentage) of RSRZ outliers, followed by percent RSRZ outliers for the chain as percentile scores relative to all X-ray entries and entries of similar resolution. The OWAB column contains the minimum, median, 95th percentile and maximum values of the occupancy-weighted average B-factor per residue. The column labelled ‘Q< 0.9’ lists the number of (and percentage) of residues with an average occupancy less than 0.9.

Mol	Chain	Analysed	<RSRZ>	#RSRZ>2	OWAB(Å ²)	Q<0.9
1	A	252/252 (100%)	0.01	4 (1%) 68 77	18, 49, 91, 113	0
1	B	252/252 (100%)	0.07	3 (1%) 75 83	22, 47, 90, 126	0
All	All	504/504 (100%)	0.04	7 (1%) 72 80	18, 48, 91, 126	0

All (7) RSRZ outliers are listed below:

Mol	Chain	Res	Type	RSRZ
1	B	334	SER	4.4
1	B	552	LEU	2.8
1	A	162	LEU	2.6
1	A	197	VAL	2.4
1	A	31	VAL	2.3
1	A	206	TYR	2.2
1	B	359	ASN	2.1

6.2 Non-standard residues in protein, DNA, RNA chains ⓘ

There are no non-standard protein/DNA/RNA residues in this entry.

6.3 Carbohydrates ⓘ

There are no carbohydrates in this entry.

6.4 Ligands ⓘ

In the following table, the Atoms column lists the number of modelled atoms in the group and the number defined in the chemical component dictionary. LLDF column lists the quality of electron density of the group with respect to its neighbouring residues in protein, DNA or RNA chains. The B-factors column lists the minimum, median, 95th percentile and maximum values of B factors

of atoms in the group. The column labelled 'Q < 0.9' lists the number of atoms with occupancy less than 0.9.

Mol	Type	Chain	Res	Atoms	RSR	LLDF	B-factors(\AA^2)	Q<0.9
3	IPD	B	592	16/16	0.20	1.91	51,70,97,98	0
3	IPD	A	292	16/16	0.18	1.16	37,64,81,92	0
2	CA	A	291	1/1	0.12	-0.41	36,36,36,36	0
2	CA	B	590	1/1	0.10	-0.68	46,46,46,46	0
2	CA	B	591	1/1	0.08	-1.01	43,43,43,43	0
2	CA	A	290	1/1	0.07	-1.61	39,39,39,39	0

6.5 Other polymers ⓘ

There are no such residues in this entry.