



Full wwPDB X-ray Structure Validation Report

Feb 27, 2014 – 08:16 AM GMT

PDB ID : 2G0E
Title : Structure of QacR Multidrug Transcriptional Regulator Bound to Trivalent and Bivalent Diamidine Drugs
Authors : Schuman, J.T.
Deposited on : 2006-02-12
Resolution : 2.88 Å(reported)

This is a full wwPDB validation report for a publicly released PDB entry.
We welcome your comments at validation@mail.wwpdb.org
A user guide is available at <http://wwpdb.org/ValidationPDFNotes.html>

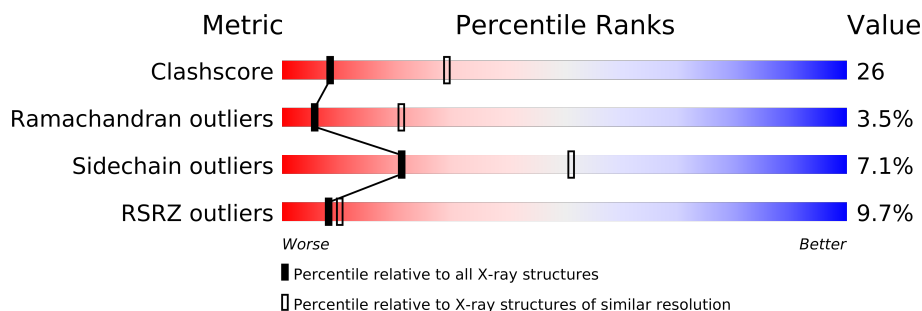
The following versions of software and data (see [references](#)) were used in the production of this report:

MolProbity : 4.02b-467
Mogul : 1.15 2013
Xtriage (Phenix) : dev-1323
EDS : stable22639
Percentile statistics : 21963
Refmac : 5.8.0049
CCP4 : 6.3.0 (Settle)
Ideal geometry (proteins) : Engh & Huber (2001)
Ideal geometry (DNA, RNA) : Parkinson et. al. (1996)
Validation Pipeline (wwPDB-VP) : stable22683

1 Overall quality at a glance

The reported resolution of this entry is 2.88 Å.

Percentile scores (ranging between 0-100) for global validation metrics of the entry are shown in the following graphic. The table shows the number of entries on which the scores are based.



Metric	Whole archive (#Entries)	Similar resolution (#Entries, resolution range(Å))
Clashscore	79885	1696 (2.90-2.86)
Ramachandran outliers	78287	1647 (2.90-2.86)
Sidechain outliers	78261	1650 (2.90-2.86)
RSRZ outliers	66119	1362 (2.90-2.86)

The table below summarises the geometric issues observed across the polymeric chains and their fit to the electron density. The red, orange, yellow and green segments on the lower bar indicate the fraction of residues that contain outliers for ≥ 3 , 2, 1 and 0 types of geometric quality criteria. The upper red bar (where present) indicates the fraction of residues that have poor fit to the electron density.

Mol	Chain	Length	Quality of chain
1	A	188	
1	B	188	
1	D	188	
1	E	188	

The following table lists non-polymeric compounds that are outliers for geometric or electron-density-fit criteria:

Mol	Type	Chain	Res	Geometry	Electron density
2	CGQ	D	3025	-	X
3	SO4	A	199	-	X
3	SO4	B	270	-	X
3	SO4	B	601	-	X
3	SO4	B	779	-	X
3	SO4	B	780	-	X
3	SO4	B	899	-	X

Continued on next page...

Continued from previous page...

Mol	Type	Chain	Res	Geometry	Electron density
3	SO4	D	220	-	X
3	SO4	D	501	-	X
3	SO4	D	599	-	X
3	SO4	D	699	-	X
3	SO4	D	800	-	X
3	SO4	D	801	-	X
3	SO4	E	239	-	X
3	SO4	E	249	-	X

2 Entry composition

There are 4 unique types of molecules in this entry. The entry contains 6357 atoms, of which 0 are hydrogen and 0 are deuterium.

In the tables below, the ZeroOcc column contains the number of atoms modelled with zero occupancy, the AltConf column contains the number of residues with at least one atom in alternate conformation and the Trace column contains the number of residues modelled with at most 2 atoms.

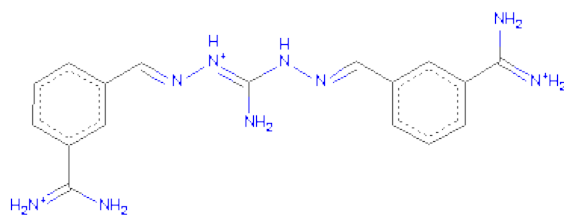
- Molecule 1 is a protein called HTH-type transcriptional regulator qacR.

Mol	Chain	Residues	Atoms					ZeroOcc	AltConf	Trace
1	A	186	Total	C	N	O	S	0	0	0
			1547	998	252	295	2			
1	B	186	Total	C	N	O	S	0	0	0
			1547	998	252	295	2			
1	D	186	Total	C	N	O	S	0	0	0
			1547	998	252	295	2			
1	E	186	Total	C	N	O	S	0	0	0
			1547	998	252	295	2			

There are 8 discrepancies between the modelled and reference sequences:

Chain	Residue	Modelled	Actual	Comment	Reference
A	72	ALA	CYS	CONFLICT	UNP P0A0N5
A	141	SER	CYS	CONFLICT	UNP P0A0N5
B	72	ALA	CYS	CONFLICT	UNP P0A0N5
B	141	SER	CYS	CONFLICT	UNP P0A0N5
D	72	ALA	CYS	CONFLICT	UNP P0A0N5
D	141	SER	CYS	CONFLICT	UNP P0A0N5
E	72	ALA	CYS	CONFLICT	UNP P0A0N5
E	141	SER	CYS	CONFLICT	UNP P0A0N5

- Molecule 2 is 3-[C-[N'-(3-CARBAMIMIDOYL-BENZYLIDENIUM)-HYDRAZINO]-[[AMINOMETHYLIDENE]AMINIUM]-IMINOMETHYL]-BENZAMIDINIUM (three-letter code: CGQ) (formula: C₁₇H₂₂N₉).



Mol	Chain	Residues	Atoms			ZeroOcc	AltConf
2	D	1	Total	C	N	0	0
			26	17	9		

- Molecule 3 is SULFATE ION (three-letter code: SO4) (formula: O₄S).



Mol	Chain	Residues	Atoms			ZeroOcc	AltConf
3	A	1	Total	O	S	0	0
			5	4	1		
3	B	1	Total	O	S	0	0
			5	4	1		
3	B	1	Total	O	S	0	0
			5	4	1		

Continued on next page...

Continued from previous page...

Mol	Chain	Residues	Atoms			ZeroOcc	AltConf
3	B	1	Total	O	S	0	0
			5	4	1		
3	B	1	Total	O	S	0	0
			5	4	1		
3	B	1	Total	O	S	0	0
			5	4	1		
3	B	1	Total	O	S	0	0
			5	4	1		
3	D	1	Total	O	S	0	0
			5	4	1		
3	D	1	Total	O	S	0	0
			5	4	1		
3	D	1	Total	O	S	0	0
			5	4	1		
3	D	1	Total	O	S	0	0
			5	4	1		
3	D	1	Total	O	S	0	0
			5	4	1		
3	D	1	Total	O	S	0	0
			5	4	1		
3	D	1	Total	O	S	0	0
			5	4	1		
3	D	1	Total	O	S	0	0
			5	4	1		
3	E	1	Total	O	S	0	0
			5	4	1		
3	E	1	Total	O	S	0	0
			5	4	1		
3	E	1	Total	O	S	0	0
			5	4	1		
3	E	1	Total	O	S	0	0
			5	4	1		
3	E	1	Total	O	S	0	0
			5	4	1		

- Molecule 4 is water.

Mol	Chain	Residues	Atoms		ZeroOcc	AltConf
4	A	5	Total	O	0	0
			5	5		

Continued on next page...

Continued from previous page...

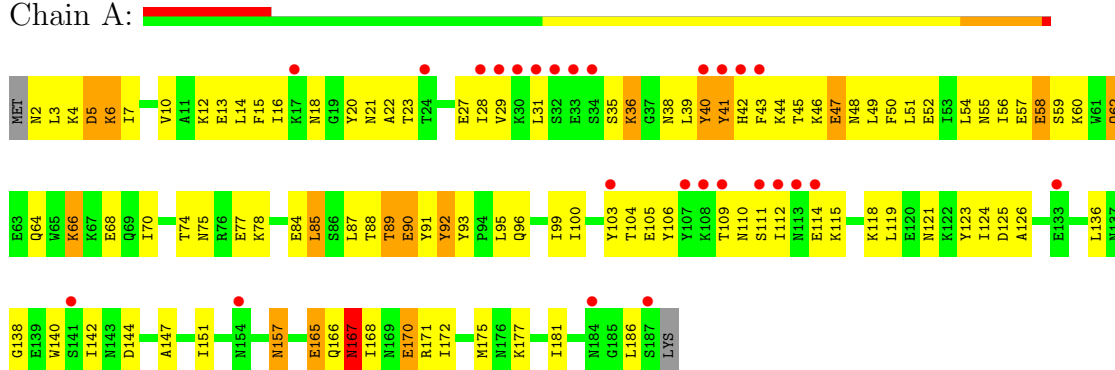
Mol	Chain	Residues	Atoms		ZeroOcc	AltConf
4	B	6	Total 6	O 6	0	0
4	D	16	Total 16	O 16	0	0
4	E	11	Total 11	O 11	0	0

3 Residue-property plots

These plots are drawn for all protein, RNA and DNA chains in the entry. The first graphic for a chain summarises the proportions of errors displayed in the second graphic. The second graphic shows the sequence view annotated by issues in geometry and electron density. Residues are color-coded according to the number of geometric quality criteria for which they contain at least one outlier: green = 0, yellow = 1, orange = 2 and red = 3 or more. A red dot above a residue indicates a poor fit to the electron density ($RSRZ > 2$). Stretches of 2 or more consecutive residues without any outlier are shown as a green connector. Residues present in the sample, but not in the model, are shown in grey.

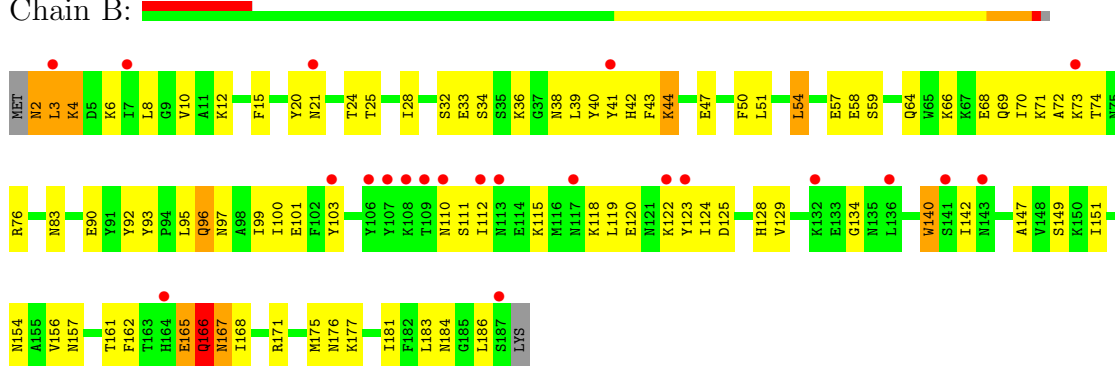
- Molecule 1: HTH-type transcriptional regulator qacR

Chain A:



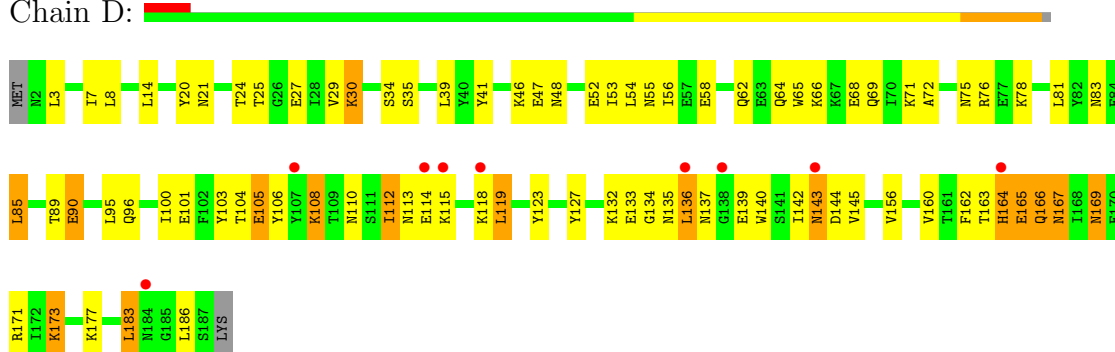
- Molecule 1: HTH-type transcriptional regulator qacR

Chain B:



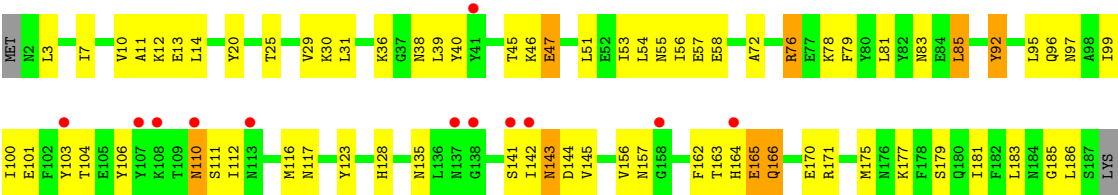
- Molecule 1: HTH-type transcriptional regulator qacR

Chain D:



● Molecule 1: HTH-type transcriptional regulator qacR

Chain E: 



4 Data and refinement statistics

Property	Value	Source
Space group	P 42 21 2	Depositor
Cell constants a, b, c, α , β , γ	170.47 Å 170.47 Å 94.05 Å 90.00° 90.00° 90.00°	Depositor
Resolution (Å)	16.00 – 2.88 26.26 – 2.88	Depositor EDS
% Data completeness (in resolution range)	97.1 (16.00-2.88) 99.2 (26.26-2.88)	Depositor EDS
R_{merge}	0.08	Depositor
R_{sym}	0.05	Depositor
$\langle I/\sigma(I) \rangle$ ¹	3.83 (at 2.89 Å)	Xtriage
Refinement program	CNS 1.1	Depositor
R, R_{free}	0.237 , 0.299 0.267 , (Not available)	Depositor DCC
R_{free} test set	No test flags present.	DCC
Wilson B-factor (Å ²)	77.1	Xtriage
Anisotropy	0.115	Xtriage
Bulk solvent k_{sol} (e/Å ³), B_{sol} (Å ²)	0.32 , 47.4	EDS
Estimated twinning fraction	No twinning to report.	Xtriage
L-test for twinning	$\langle L \rangle = 0.49$, $\langle L^2 \rangle = 0.32$	Xtriage
Outliers	2 of 31655 reflections (0.006%)	Xtriage
F_o, F_c correlation	0.92	EDS
Total number of atoms	6357	wwPDB-VP
Average B, all atoms (Å ²)	84.0	wwPDB-VP

Xtriage's analysis on translational NCS is as follows: *The largest off-origin peak in the Patterson function is 3.18% of the height of the origin peak. No significant pseudotranslation is detected.*

¹Intensities estimated from amplitudes.

5 Model quality ⓘ

5.1 Standard geometry ⓘ

Bond lengths and bond angles in the following residue types are not validated in this section: CGQ, SO4

The Z score for a bond length (or angle) is the number of standard deviations the observed value is removed from the expected value. A bond length (or angle) with $|Z| > 5$ is considered an outlier worth inspection. RMSZ is the root-mean-square of all Z scores of the bond lengths (or angles).

Mol	Chain	Bond lengths		Bond angles	
		RMSZ	$\# Z > 5$	RMSZ	$\# Z > 5$
1	A	0.42	0/1578	0.57	0/2126
1	B	0.42	0/1578	0.58	0/2126
1	D	0.47	0/1578	0.63	0/2126
1	E	0.44	0/1578	0.61	0/2126
All	All	0.44	0/6312	0.60	0/8504

There are no bond length outliers.

There are no bond angle outliers.

There are no chirality outliers.

There are no planarity outliers.

5.2 Close contacts ⓘ

In the following table, the Non-H and H(model) columns list the number of non-hydrogen atoms and hydrogen atoms in the chain respectively. The H(added) column lists the number of hydrogens added by MolProbity. The Clashes column lists the number of clashes within the asymmetric unit, and the number in parentheses is this value normalized per 1000 atoms of the molecule in the chain. The Symm-Clashes column gives symmetry related clashes, in the same way as for the Clashes column.

Mol	Chain	Non-H	H(model)	H(added)	Clashes	Symm-Clashes
1	A	1547	0	1536	90	0
1	B	1547	0	1536	92	0
1	D	1547	0	1536	92	0
1	E	1547	0	1536	71	0
2	D	26	0	22	12	0
3	A	5	0	0	0	0
3	B	30	0	0	5	0
3	D	40	0	0	2	0

Continued on next page...

Continued from previous page...

Mol	Chain	Non-H	H(model)	H(added)	Clashes	Symm-Clashes
3	E	30	0	0	2	0
4	A	5	0	0	0	0
4	B	6	0	0	1	0
4	D	16	0	0	2	0
4	E	11	0	0	1	0
All	All	6357	0	6166	324	0

Clashscore is defined as the number of clashes calculated for the entry per 1000 atoms (including hydrogens) of the entry. The overall clashscore for this entry is 26.

All (324) close contacts within the same asymmetric unit are listed below.

Atom-1	Atom-2	Distance(Å)	Clash(Å)
1:D:54:LEU:HB3	2:D:3025:CGQ:H231	1.34	1.08
1:A:36:LYS:H	1:A:36:LYS:HD3	1.22	1.02
1:D:89:THR:HB	2:D:3025:CGQ:H61	1.44	0.99
1:D:54:LEU:HB3	2:D:3025:CGQ:C23	1.94	0.98
1:A:89:THR:HG22	1:A:90:GLU:H	1.23	0.98
1:D:119:LEU:HG	2:D:3025:CGQ:C24	1.93	0.97
1:A:70:ILE:HD12	1:A:70:ILE:H	1.32	0.93
1:A:39:LEU:HD12	1:A:43:PHE:HB2	1.53	0.91
1:A:96:GLN:HG3	1:A:157:ASN:HD21	1.34	0.91
1:D:89:THR:HB	2:D:3025:CGQ:C6	2.00	0.90
1:A:14:LEU:HB3	1:A:23:THR:HG21	1.51	0.90
1:A:40:TYR:HA	1:A:44:LYS:HG3	1.57	0.86
1:A:39:LEU:HB3	1:A:43:PHE:O	1.75	0.86
1:E:143:ASN:ND2	1:E:144:ASP:H	1.76	0.83
1:D:119:LEU:HG	2:D:3025:CGQ:C23	2.09	0.83
1:A:118:LYS:HA	1:A:121:ASN:HD22	1.43	0.82
1:B:165:GLU:HB3	1:E:103:TYR:HE1	1.44	0.81
1:D:142:ILE:HD11	1:D:186:LEU:HD13	1.60	0.81
1:B:36:LYS:HG2	1:B:40:TYR:HE1	1.46	0.80
1:B:25:THR:HG23	1:B:39:LEU:HD13	1.62	0.80
1:D:30:LYS:O	1:D:30:LYS:HD3	1.82	0.79
1:E:166:GLN:H	1:E:166:GLN:NE2	1.81	0.78
1:B:120:GLU:O	1:B:124:ILE:HG12	1.84	0.78
1:A:89:THR:HG22	1:A:90:GLU:N	2.00	0.77
1:D:135:ASN:HD21	1:D:142:ILE:H	1.33	0.76
1:E:100:ILE:O	1:E:104:THR:HG23	1.85	0.76
1:A:6:LYS:HA	1:A:6:LYS:HE3	1.69	0.75
1:A:89:THR:HG22	1:A:91:TYR:H	1.50	0.74
1:A:36:LYS:H	1:A:36:LYS:CD	2.00	0.73
1:E:166:GLN:N	1:E:166:GLN:HE21	1.86	0.73

Continued on next page...

Continued from previous page...

Atom-1	Atom-2	Distance(Å)	Clash(Å)
1:B:100:ILE:HD11	1:E:162:PHE:CE2	2.24	0.73
1:A:4:LYS:HG3	1:A:42:HIS:ND1	2.03	0.73
1:A:70:ILE:HD12	1:A:70:ILE:N	2.04	0.72
1:E:166:GLN:N	1:E:166:GLN:NE2	2.37	0.72
1:E:81:LEU:HG	1:E:85:LEU:CD2	2.20	0.72
1:D:66:LYS:HA	1:D:69:GLN:HE21	1.54	0.71
1:E:29:VAL:HG23	1:E:39:LEU:HD12	1.71	0.71
1:D:173:LYS:HA	1:D:173:LYS:HE2	1.71	0.71
1:B:123:TYR:HE2	4:B:1003:HOH:O	1.75	0.70
1:E:97:ASN:HA	1:E:100:ILE:HD12	1.73	0.68
1:D:163:THR:O	1:D:165:GLU:HG2	1.94	0.68
1:E:3:LEU:O	1:E:7:ILE:HG12	1.93	0.68
1:B:147:ALA:O	1:B:151:ILE:HG13	1.92	0.68
1:D:108:LYS:H	1:D:108:LYS:HD3	1.58	0.68
1:D:143:ASN:HD22	1:D:143:ASN:H	1.42	0.68
1:A:70:ILE:CD1	1:A:70:ILE:H	2.07	0.68
1:D:20:TYR:CZ	1:D:46:LYS:HE3	2.30	0.67
1:A:111:SER:O	1:A:112:ILE:HD13	1.95	0.67
1:A:118:LYS:HA	1:A:121:ASN:ND2	2.10	0.67
1:A:96:GLN:HG3	1:A:157:ASN:ND2	2.08	0.66
1:E:103:TYR:HD2	1:E:116:MET:HG2	1.59	0.66
1:B:154:ASN:HD22	1:E:162:PHE:HB3	1.60	0.66
1:A:18:ASN:HD22	1:A:23:THR:HG22	1.60	0.66
1:D:112:ILE:HG22	1:D:112:ILE:O	1.96	0.66
1:B:154:ASN:ND2	1:E:162:PHE:HB3	2.11	0.66
1:A:58:GLU:HG3	1:A:119:LEU:HD11	1.77	0.66
1:B:184:ASN:O	1:E:185:GLY:HA2	1.95	0.65
1:A:2:ASN:HB3	1:A:5:ASP:HB2	1.76	0.65
1:A:18:ASN:HD22	1:A:23:THR:CG2	2.09	0.65
1:A:142:ILE:HD12	1:A:186:LEU:HD22	1.77	0.65
1:B:165:GLU:HB3	1:E:103:TYR:CE1	2.31	0.65
1:B:6:LYS:HG2	1:B:32:SER:O	1.97	0.64
1:E:76:ARG:HD2	1:E:183:LEU:HD23	1.78	0.64
1:B:2:ASN:ND2	1:B:3:LEU:N	2.45	0.64
1:A:74:THR:OG1	1:A:77:GLU:HG3	1.97	0.64
1:B:59:SER:HA	3:B:779:SO4:O1	1.98	0.64
1:D:114:GLU:OE1	1:D:118:LYS:HE3	1.98	0.63
1:D:165:GLU:O	1:D:166:GLN:HB3	1.97	0.63
1:E:165:GLU:HB2	1:E:166:GLN:NE2	2.13	0.63
1:E:81:LEU:HG	1:E:85:LEU:HD21	1.80	0.63
1:D:83:ASN:ND2	1:D:156:VAL:HG21	2.14	0.63
1:B:177:LYS:O	1:B:181:ILE:HG13	1.99	0.63

Continued on next page...

Continued from previous page...

Atom-1	Atom-2	Distance(Å)	Clash(Å)
1:D:134:GLY:HA3	1:D:140:TRP:CZ2	2.34	0.62
1:B:166:GLN:N	1:B:166:GLN:OE1	2.33	0.62
1:E:163:THR:HA	1:E:165:GLU:OE1	1.99	0.62
1:D:96:GLN:O	1:D:100:ILE:HG12	1.99	0.62
1:E:142:ILE:HD12	1:E:186:LEU:HD13	1.81	0.62
1:B:96:GLN:O	1:B:100:ILE:HG12	2.00	0.62
1:B:96:GLN:HG2	1:B:161:THR:HG21	1.83	0.61
1:E:163:THR:O	1:E:171:ARG:HD3	2.01	0.61
1:B:162:PHE:HE2	1:E:100:ILE:HD11	1.65	0.61
1:A:110:ASN:HD22	1:A:110:ASN:N	1.98	0.61
1:E:142:ILE:CD1	1:E:186:LEU:HD13	2.31	0.60
1:B:118:LYS:NZ	1:B:122:LYS:HE2	2.16	0.60
1:A:111:SER:HA	1:A:115:LYS:HB2	1.83	0.60
1:B:70:ILE:C	1:B:72:ALA:H	2.03	0.60
1:E:96:GLN:O	1:E:100:ILE:HG13	2.02	0.60
1:B:2:ASN:ND2	1:B:3:LEU:H	1.99	0.60
1:A:36:LYS:HD3	1:A:36:LYS:N	2.06	0.60
1:D:20:TYR:CE1	1:D:46:LYS:HE3	2.36	0.60
1:D:90:GLU:HG2	1:D:160:VAL:CG1	2.32	0.59
1:A:66:LYS:O	1:A:70:ILE:HD11	2.02	0.59
1:A:177:LYS:O	1:A:181:ILE:HG12	2.03	0.59
1:B:2:ASN:CG	1:B:3:LEU:H	2.04	0.59
1:D:105:GLU:C	1:D:108:LYS:HE2	2.23	0.59
1:B:43:PHE:O	1:B:44:LYS:HB2	2.02	0.59
1:A:109:THR:OG1	1:A:112:ILE:HG12	2.03	0.58
1:D:134:GLY:HA3	1:D:140:TRP:CE2	2.38	0.58
1:B:101:GLU:OE2	1:E:101:GLU:OE1	2.20	0.58
1:E:25:THR:HG21	1:E:40:TYR:OH	2.03	0.58
1:B:36:LYS:HG2	1:B:40:TYR:CE1	2.33	0.58
1:D:167:ASN:HD21	1:D:169:ASN:HB2	1.69	0.58
1:B:125:ASP:O	1:B:129:VAL:HG23	2.03	0.58
1:D:165:GLU:O	1:D:166:GLN:CB	2.52	0.58
1:E:10:VAL:HG11	1:E:31:LEU:HB2	1.85	0.57
1:A:96:GLN:OE1	1:A:99:ILE:HD12	2.04	0.56
1:A:84:GLU:HG2	1:A:172:ILE:HD12	1.87	0.56
1:B:96:GLN:HE21	1:B:157:ASN:HD21	1.52	0.56
1:D:136:LEU:HD12	1:D:136:LEU:N	2.20	0.56
1:B:76:ARG:HG3	1:B:183:LEU:HD13	1.86	0.56
1:D:143:ASN:N	1:D:143:ASN:HD22	2.02	0.56
1:B:162:PHE:CE2	1:E:100:ILE:HD11	2.40	0.56
1:A:21:ASN:HB3	1:A:105:GLU:OE2	2.06	0.56
1:E:179:SER:O	1:E:183:LEU:HB2	2.06	0.56

Continued on next page...

Continued from previous page...

Atom-1	Atom-2	Distance(Å)	Clash(Å)
1:D:85:LEU:O	1:D:89:THR:HG23	2.06	0.56
1:B:51:LEU:HD11	1:B:115:LYS:HD2	1.88	0.56
1:D:163:THR:O	1:D:165:GLU:N	2.39	0.55
1:D:39:LEU:O	1:D:39:LEU:HD23	2.06	0.55
1:B:165:GLU:HG2	1:E:103:TYR:CE1	2.41	0.55
1:A:54:LEU:HB3	1:A:119:LEU:HD21	1.89	0.55
1:A:168:ILE:HA	1:A:171:ARG:HG3	1.89	0.55
1:B:24:THR:O	1:B:28:ILE:HG13	2.07	0.55
1:B:66:LYS:HA	1:B:69:GLN:HG2	1.89	0.55
1:B:168:ILE:HA	1:B:171:ARG:HD3	1.88	0.55
1:D:68:GLU:OE1	1:D:71:LYS:HE2	2.07	0.55
1:A:60:LYS:HD2	1:A:91:TYR:CE2	2.41	0.54
1:D:54:LEU:HD13	2:D:3025:CGQ:C23	2.37	0.54
1:A:89:THR:CG2	1:A:90:GLU:H	2.06	0.54
1:E:92:TYR:CD2	1:E:123:TYR:CZ	2.95	0.54
1:E:135:ASN:OD1	1:E:141:SER:HA	2.07	0.54
1:A:18:ASN:HB2	1:A:23:THR:HG23	1.89	0.54
1:E:96:GLN:CD	1:E:157:ASN:HD21	2.11	0.54
1:E:14:LEU:HD11	1:E:31:LEU:HD12	1.90	0.54
1:B:93:TYR:HH	1:B:123:TYR:HE1	1.55	0.54
1:A:28:ILE:HD13	1:A:49:LEU:HD21	1.90	0.54
1:D:64:GLN:OE1	2:D:3025:CGQ:N10	2.42	0.53
1:D:24:THR:OG1	1:D:27:GLU:HG3	2.08	0.53
1:D:25:THR:O	1:D:29:VAL:HG23	2.08	0.53
1:E:103:TYR:CD2	1:E:116:MET:HG2	2.41	0.53
1:D:39:LEU:HD23	1:D:39:LEU:C	2.29	0.53
1:B:122:LYS:HD3	3:B:779:SO4:O4	2.08	0.53
1:E:3:LEU:HD13	1:E:38:ASN:ND2	2.23	0.53
1:B:3:LEU:HD11	1:B:34:SER:OG	2.10	0.52
1:B:64:GLN:O	1:B:68:GLU:HG3	2.09	0.52
1:D:164:HIS:HA	1:D:171:ARG:CZ	2.39	0.52
1:E:96:GLN:NE2	1:E:157:ASN:HD21	2.06	0.52
1:E:56:ILE:HG21	3:E:399:SO4:O1	2.08	0.52
1:A:40:TYR:CA	1:A:44:LYS:HG3	2.34	0.52
1:B:3:LEU:O	1:B:3:LEU:HD13	2.10	0.52
1:D:123:TYR:OH	2:D:3025:CGQ:N19	2.43	0.52
1:A:38:ASN:C	1:A:39:LEU:HD22	2.30	0.52
1:B:142:ILE:HD11	1:B:186:LEU:HD13	1.91	0.52
1:D:65:TRP:CZ3	1:D:81:LEU:HD23	2.45	0.52
1:E:29:VAL:HG21	1:E:36:LYS:HA	1.90	0.52
1:D:76:ARG:HG3	1:D:183:LEU:HD23	1.92	0.52
1:B:167:ASN:HD22	1:B:168:ILE:N	2.08	0.51

Continued on next page...

Continued from previous page...

Atom-1	Atom-2	Distance(Å)	Clash(Å)
1:E:163:THR:C	1:E:165:GLU:H	2.14	0.51
1:D:167:ASN:HD21	1:D:169:ASN:CB	2.23	0.51
1:D:110:ASN:O	1:D:113:ASN:HB2	2.10	0.51
1:D:21:ASN:ND2	1:D:101:GLU:OE1	2.44	0.51
1:E:143:ASN:CG	1:E:144:ASP:H	2.13	0.51
1:D:58:GLU:OE2	1:D:123:TYR:CE2	2.64	0.51
1:B:38:ASN:O	1:B:41:TYR:HB3	2.11	0.51
1:B:128:HIS:HA	1:B:149:SER:OG	2.10	0.51
1:B:101:GLU:HG2	1:E:97:ASN:HD21	1.75	0.50
1:D:66:LYS:HA	1:D:69:GLN:NE2	2.25	0.50
1:B:51:LEU:HD12	1:B:112:ILE:HG23	1.92	0.50
1:B:134:GLY:HA3	1:B:140:TRP:CE2	2.47	0.50
1:B:36:LYS:HE2	1:B:40:TYR:OH	2.12	0.50
1:B:57:GLU:HG3	1:B:95:LEU:HD12	1.92	0.50
1:A:45:THR:OG1	1:A:48:ASN:HB2	2.12	0.50
1:A:35:SER:HB3	1:A:38:ASN:OD1	2.12	0.50
1:D:136:LEU:CD1	1:D:136:LEU:N	2.74	0.50
1:D:89:THR:CB	2:D:3025:CGQ:C6	2.83	0.49
1:D:101:GLU:O	1:D:105:GLU:HB2	2.12	0.49
1:A:58:GLU:HG3	1:A:119:LEU:CD1	2.40	0.49
1:A:6:LYS:CA	1:A:6:LYS:HE3	2.41	0.49
1:A:10:VAL:HG13	1:A:31:LEU:HD23	1.93	0.49
1:D:54:LEU:HD22	2:D:3025:CGQ:C21	2.42	0.49
1:A:57:GLU:HB3	1:A:92:TYR:H	1.76	0.49
1:E:110:ASN:CG	1:E:111:SER:H	2.15	0.49
1:A:47:GLU:O	1:A:51:LEU:HB2	2.13	0.49
1:D:165:GLU:N	1:D:171:ARG:NH2	2.60	0.49
1:D:136:LEU:H	1:D:136:LEU:CD1	2.25	0.49
1:E:11:ALA:HB3	1:E:53:ILE:HD11	1.94	0.49
1:E:177:LYS:HE3	1:E:181:ILE:HD11	1.93	0.49
1:D:8:LEU:HD13	1:D:56:ILE:CD1	2.43	0.49
1:A:121:ASN:O	1:A:125:ASP:HB2	2.13	0.49
1:A:56:ILE:O	1:A:59:SER:N	2.46	0.49
1:A:62:GLN:OE1	1:A:126:ALA:HB2	2.12	0.49
1:A:84:GLU:HG2	1:A:172:ILE:CD1	2.43	0.48
1:D:75:ASN:HB2	1:D:139:GLU:OE1	2.13	0.48
1:E:165:GLU:HB2	1:E:166:GLN:HE22	1.77	0.48
1:D:65:TRP:HZ3	1:D:81:LEU:HD23	1.78	0.48
1:D:3:LEU:O	1:D:7:ILE:HG13	2.12	0.48
1:A:123:TYR:OH	1:A:157:ASN:HB2	2.12	0.48
1:D:30:LYS:HD3	1:D:30:LYS:C	2.31	0.48
1:B:58:GLU:OE2	1:B:123:TYR:HB2	2.13	0.48

Continued on next page...

Continued from previous page...

Atom-1	Atom-2	Distance(Å)	Clash(Å)
1:A:87:LEU:HD11	1:A:175:MET:HB2	1.95	0.48
1:D:55:ASN:ND2	1:D:119:LEU:HD22	2.29	0.48
1:A:91:TYR:O	1:A:93:TYR:N	2.43	0.48
1:D:143:ASN:ND2	1:D:143:ASN:H	2.08	0.48
1:D:135:ASN:C	1:D:137:ASN:H	2.17	0.48
1:B:25:THR:CG2	1:B:39:LEU:HD13	2.40	0.48
1:B:4:LYS:HB2	1:B:42:HIS:CE1	2.49	0.48
1:A:58:GLU:HG2	1:A:92:TYR:CD2	2.49	0.48
1:E:54:LEU:HD11	1:E:99:ILE:HD11	1.96	0.48
1:A:14:LEU:HB3	1:A:23:THR:CG2	2.33	0.47
1:E:106:TYR:HB3	1:E:112:ILE:HG21	1.96	0.47
1:D:164:HIS:HA	1:D:171:ARG:NH1	2.29	0.47
1:A:110:ASN:N	1:A:110:ASN:ND2	2.60	0.47
1:B:58:GLU:HB3	3:B:779:SO4:O2	2.15	0.47
1:A:177:LYS:HE2	1:D:144:ASP:OD2	2.14	0.47
1:B:6:LYS:NZ	1:B:33:GLU:HB2	2.30	0.47
1:D:173:LYS:CA	1:D:173:LYS:HE2	2.44	0.47
1:D:29:VAL:HG13	1:D:35:SER:HA	1.96	0.47
1:D:103:TYR:HD1	4:D:3034:HOH:O	1.97	0.47
1:A:111:SER:OG	1:A:115:LYS:HG3	2.15	0.46
1:A:20:TYR:CE1	1:A:46:LYS:HE2	2.50	0.46
1:B:156:VAL:HG13	1:B:175:MET:SD	2.55	0.46
1:B:101:GLU:HG2	1:E:97:ASN:ND2	2.31	0.46
1:B:115:LYS:O	1:B:118:LYS:HB3	2.15	0.46
1:E:12:LYS:HD2	3:E:399:SO4:O2	2.15	0.46
1:D:132:LYS:O	1:D:135:ASN:HB2	2.15	0.46
1:B:103:TYR:OH	1:E:165:GLU:HG3	2.14	0.46
1:B:95:LEU:O	1:B:99:ILE:HG13	2.16	0.46
1:B:122:LYS:HD3	3:B:779:SO4:S	2.56	0.46
1:D:69:GLN:HB2	1:D:78:LYS:HD3	1.98	0.45
1:B:57:GLU:HG3	1:B:95:LEU:CD1	2.46	0.45
1:A:85:LEU:HA	1:A:85:LEU:HD12	1.76	0.45
1:B:151:ILE:HD11	1:E:177:LYS:HB3	1.97	0.45
1:B:154:ASN:HD22	1:E:162:PHE:CB	2.27	0.45
1:B:44:LYS:HB2	1:B:44:LYS:NZ	2.32	0.45
1:E:128:HIS:ND1	1:E:145:VAL:HG11	2.32	0.45
1:B:73:LYS:HG3	1:B:74:THR:H	1.81	0.45
1:E:83:ASN:ND2	1:E:156:VAL:HG21	2.32	0.45
1:B:54:LEU:HD11	1:B:99:ILE:HG12	1.99	0.45
1:A:136:LEU:C	1:A:138:GLY:H	2.19	0.45
1:B:93:TYR:OH	1:B:123:TYR:HE1	2.00	0.45
1:B:70:ILE:O	1:B:72:ALA:N	2.49	0.45

Continued on next page...

Continued from previous page...

Atom-1	Atom-2	Distance(Å)	Clash(Å)
1:D:90:GLU:HG2	1:D:160:VAL:HG11	1.99	0.45
1:D:34:SER:OG	1:D:35:SER:N	2.50	0.45
1:B:58:GLU:HA	1:B:58:GLU:OE1	2.16	0.45
1:E:79:PHE:CD2	1:E:183:LEU:HD13	2.51	0.45
1:A:167:ASN:HB3	1:A:170:GLU:HB2	1.97	0.45
1:D:62:GLN:HG2	4:D:3031:HOH:O	2.15	0.44
1:D:144:ASP:N	1:D:144:ASP:OD1	2.50	0.44
1:B:96:GLN:CG	1:B:161:THR:HG21	2.46	0.44
1:B:12:LYS:HE3	1:B:57:GLU:OE1	2.18	0.44
1:A:124:ILE:C	1:A:124:ILE:HD12	2.38	0.44
1:A:75:ASN:ND2	1:A:78:LYS:HD2	2.32	0.44
1:B:70:ILE:C	1:B:72:ALA:N	2.71	0.44
1:D:53:ILE:HG23	3:D:501:SO4:O4	2.17	0.44
1:E:72:ALA:HB3	1:E:78:LYS:HG2	1.98	0.44
1:A:88:THR:O	1:A:89:THR:O	2.36	0.44
1:B:165:GLU:H	1:B:165:GLU:HG3	1.55	0.44
1:E:45:THR:OG1	1:E:47:GLU:HG2	2.18	0.43
1:B:4:LYS:HE3	1:B:8:LEU:HD11	1.99	0.43
1:A:3:LEU:O	1:A:7:ILE:HG12	2.18	0.43
1:A:105:GLU:C	1:A:106:TYR:HD2	2.22	0.43
1:B:3:LEU:HD11	1:B:34:SER:CB	2.48	0.43
1:E:83:ASN:HB3	1:E:175:MET:SD	2.58	0.43
1:B:97:ASN:HD21	1:E:100:ILE:HB	1.83	0.43
1:A:166:GLN:O	1:A:167:ASN:C	2.56	0.43
1:D:47:GLU:HG3	1:D:106:TYR:CZ	2.53	0.43
1:A:15:PHE:CD1	1:A:50:PHE:HD2	2.37	0.43
1:B:10:VAL:HG21	1:B:32:SER:HA	2.00	0.43
1:B:2:ASN:HD22	1:B:3:LEU:N	2.16	0.43
1:B:99:ILE:HG22	1:B:99:ILE:O	2.18	0.43
1:A:104:THR:OG1	1:A:105:GLU:N	2.51	0.43
1:B:15:PHE:CE1	1:B:50:PHE:HD2	2.37	0.43
1:E:55:ASN:O	1:E:58:GLU:HB3	2.19	0.43
1:D:100:ILE:O	1:D:104:THR:HG23	2.18	0.43
1:E:47:GLU:O	1:E:51:LEU:HB2	2.19	0.43
1:A:100:ILE:HD11	1:D:162:PHE:CE2	2.54	0.43
1:B:36:LYS:O	1:B:40:TYR:CD1	2.72	0.42
1:D:56:ILE:HG21	3:D:501:SO4:O3	2.19	0.42
1:A:64:GLN:O	1:A:68:GLU:HG3	2.19	0.42
1:B:21:ASN:ND2	1:B:101:GLU:HB3	2.35	0.42
1:D:54:LEU:HA	1:D:54:LEU:HD23	1.87	0.42
1:B:2:ASN:CG	1:B:3:LEU:N	2.71	0.42
1:D:133:GLU:OE1	1:D:133:GLU:HA	2.19	0.42

Continued on next page...

Continued from previous page...

Atom-1	Atom-2	Distance(Å)	Clash(Å)
1:D:89:THR:CB	2:D:3025:CGQ:H61	2.30	0.42
1:A:111:SER:CA	1:A:115:LYS:HB2	2.48	0.42
1:A:52:GLU:O	1:A:55:ASN:HB3	2.19	0.42
1:A:23:THR:HA	1:A:27:GLU:OE2	2.20	0.42
1:B:119:LEU:O	1:B:122:LYS:HB2	2.19	0.42
1:A:41:TYR:HD2	1:A:41:TYR:O	2.02	0.42
1:A:144:ASP:OD2	1:A:144:ASP:N	2.53	0.42
1:E:183:LEU:HD12	1:E:183:LEU:HA	1.72	0.42
1:D:41:TYR:HD1	1:E:10:VAL:HG13	1.85	0.42
1:D:72:ALA:HB3	1:D:78:LYS:HG2	2.02	0.41
1:D:108:LYS:HD3	1:D:108:LYS:N	2.31	0.41
1:D:143:ASN:ND2	1:D:144:ASP:OD1	2.53	0.41
1:E:20:TYR:CZ	1:E:46:LYS:HE2	2.55	0.41
1:B:101:GLU:CG	1:E:97:ASN:HD21	2.33	0.41
1:B:51:LEU:HD23	1:B:51:LEU:O	2.20	0.41
1:B:6:LYS:HZ3	1:B:33:GLU:HB2	1.85	0.41
1:A:144:ASP:OD1	1:D:177:LYS:HE2	2.20	0.41
1:A:106:TYR:O	1:A:112:ILE:HG13	2.20	0.41
1:A:56:ILE:O	1:A:59:SER:HB2	2.20	0.41
1:B:83:ASN:HB3	1:B:175:MET:SD	2.61	0.41
1:B:122:LYS:HD3	3:B:779:SO4:O3	2.20	0.41
1:E:117:ASN:HD22	1:E:117:ASN:HA	1.69	0.41
1:D:183:LEU:HD12	1:D:183:LEU:HA	1.78	0.41
1:E:57:GLU:HG3	1:E:95:LEU:HD12	2.03	0.41
1:A:177:LYS:HE3	1:A:181:ILE:HD11	2.02	0.41
1:D:83:ASN:ND2	1:D:127:TYR:OH	2.53	0.41
1:B:44:LYS:HB2	1:B:44:LYS:HZ2	1.86	0.41
1:E:170:GLU:HA	1:E:170:GLU:OE1	2.20	0.41
1:B:176:ASN:HD22	1:B:176:ASN:HA	1.71	0.41
1:A:64:GLN:OE1	1:A:89:THR:HG23	2.20	0.41
1:A:70:ILE:N	1:A:70:ILE:CD1	2.73	0.41
1:A:95:LEU:O	1:A:99:ILE:HG13	2.20	0.41
1:D:135:ASN:HD21	1:D:142:ILE:N	2.09	0.41
1:D:165:GLU:H	1:D:171:ARG:NH2	2.18	0.41
1:A:12:LYS:O	1:A:16:ILE:HG13	2.21	0.41
1:A:40:TYR:HA	1:A:44:LYS:CG	2.40	0.41
1:D:114:GLU:HB3	1:D:115:LYS:H	1.78	0.40
1:E:13:GLU:HG2	4:E:906:HOH:O	2.21	0.40
1:D:164:HIS:C	1:D:165:GLU:OE1	2.59	0.40
1:D:114:GLU:OE2	1:D:115:LYS:N	2.55	0.40
1:B:83:ASN:N	1:B:83:ASN:ND2	2.69	0.40
1:A:147:ALA:O	1:A:151:ILE:HG13	2.22	0.40

There are no symmetry-related clashes.

5.3 Torsion angles

5.3.1 Protein backbone ⓘ

In the following table, the Percentiles column shows the percent Ramachandran outliers of the chain as a percentile score with respect to all X-ray entries followed by that with respect to entries of similar resolution. The Analysed column shows the number of residues for which the backbone conformation was analysed, and the total number of residues.

Mol	Chain	Analysed	Favoured	Allowed	Outliers	Percentiles	
1	A	184/188 (98%)	145 (79%)	32 (17%)	7 (4%)	5	18
1	B	184/188 (98%)	162 (88%)	15 (8%)	7 (4%)	5	18
1	D	184/188 (98%)	163 (89%)	15 (8%)	6 (3%)	6	23
1	E	184/188 (98%)	156 (85%)	22 (12%)	6 (3%)	6	23
All	All	736/752 (98%)	626 (85%)	84 (11%)	26 (4%)	6	21

All (26) Ramachandran outliers are listed below:

Mol	Chain	Res	Type
1	A	89	THR
1	A	165	GLU
1	B	166	GLN
1	D	164	HIS
1	D	166	GLN
1	A	167	ASN
1	B	71	LYS
1	B	92	TYR
1	D	165	GLU
1	E	143	ASN
1	A	22	ALA
1	A	29	VAL
1	A	92	TYR
1	B	110	ASN
1	D	136	LEU
1	D	145	VAL
1	A	40	TYR
1	B	3	LEU
1	B	20	TYR
1	B	111	SER
1	D	112	ILE

Continued on next page...

Continued from previous page...

Mol	Chain	Res	Type
1	E	30	LYS
1	E	110	ASN
1	E	164	HIS
1	E	92	TYR
1	E	165	GLU

5.3.2 Protein sidechains ⓘ

In the following table, the Percentiles column shows the percent sidechain outliers of the chain as a percentile score with respect to all X-ray entries followed by that with respect to entries of similar resolution. The Analysed column shows the number of residues for which the sidechain conformation was analysed, and the total number of residues.

Mol	Chain	Analysed	Rotameric	Outliers	Percentiles	
1	A	169/171 (99%)	151 (89%)	18 (11%)	10	26
1	B	169/171 (99%)	158 (94%)	11 (6%)	24	56
1	D	169/171 (99%)	154 (91%)	15 (9%)	14	38
1	E	169/171 (99%)	165 (98%)	4 (2%)	61	91
All	All	676/684 (99%)	628 (93%)	48 (7%)	21	51

All (48) residues with a non-rotameric sidechain are listed below:

Mol	Chain	Res	Type
1	A	5	ASP
1	A	6	LYS
1	A	13	GLU
1	A	36	LYS
1	A	41	TYR
1	A	47	GLU
1	A	58	GLU
1	A	62	GLN
1	A	66	LYS
1	A	85	LEU
1	A	90	GLU
1	A	103	TYR
1	A	114	GLU
1	A	140	TRP
1	A	157	ASN
1	A	165	GLU
1	A	167	ASN

Continued on next page...

Continued from previous page...

Mol	Chain	Res	Type
1	A	170	GLU
1	B	2	ASN
1	B	4	LYS
1	B	44	LYS
1	B	47	GLU
1	B	54	LEU
1	B	90	GLU
1	B	96	GLN
1	B	140	TRP
1	B	165	GLU
1	B	166	GLN
1	B	167	ASN
1	D	14	LEU
1	D	30	LYS
1	D	48	ASN
1	D	52	GLU
1	D	85	LEU
1	D	90	GLU
1	D	95	LEU
1	D	105	GLU
1	D	108	LYS
1	D	119	LEU
1	D	143	ASN
1	D	167	ASN
1	D	169	ASN
1	D	173	LYS
1	D	183	LEU
1	E	47	GLU
1	E	76	ARG
1	E	85	LEU
1	E	166	GLN

Some sidechains can be flipped to improve hydrogen bonding and reduce clashes. All (45) such sidechains are listed below:

Mol	Chain	Res	Type
1	A	18	ASN
1	A	75	ASN
1	A	83	ASN
1	A	96	GLN
1	A	110	ASN
1	A	121	ASN
1	A	154	ASN

Continued on next page...

Continued from previous page...

Mol	Chain	Res	Type
1	A	157	ASN
1	A	166	GLN
1	A	167	ASN
1	A	180	GLN
1	B	2	ASN
1	B	42	HIS
1	B	62	GLN
1	B	75	ASN
1	B	83	ASN
1	B	96	GLN
1	B	137	ASN
1	B	143	ASN
1	B	154	ASN
1	B	167	ASN
1	B	176	ASN
1	D	21	ASN
1	D	38	ASN
1	D	55	ASN
1	D	69	GLN
1	D	83	ASN
1	D	96	GLN
1	D	113	ASN
1	D	121	ASN
1	D	135	ASN
1	D	143	ASN
1	D	146	ASN
1	D	166	GLN
1	D	180	GLN
1	E	18	ASN
1	E	38	ASN
1	E	83	ASN
1	E	96	GLN
1	E	97	ASN
1	E	117	ASN
1	E	121	ASN
1	E	146	ASN
1	E	157	ASN
1	E	166	GLN

5.3.3 RNA ⓘ

There are no RNA chains in this entry.

5.4 Non-standard residues in protein, DNA, RNA chains ⓘ

There are no non-standard protein/DNA/RNA residues in this entry.

5.5 Carbohydrates ⓘ

There are no carbohydrates in this entry.

5.6 Ligand geometry ⓘ

22 ligands are modelled in this entry.

In the following table, the Counts columns list the number of bonds (or angles) for which Mogul statistics could be retrieved, the number of bonds (or angles) that are observed in the model and the number of bonds (or angles) that are defined in the chemical component dictionary. The Link column lists molecule types, if any, to which the group is linked. The Z score for a bond length (or angle) is the number of standard deviations the observed value is removed from the expected value. A bond length (or angle) with $|Z| > 2$ is considered an outlier worth inspection. RMSZ is the root-mean-square of all Z scores of the bond lengths (or angles).

Mol	Type	Chain	Res	Link	Bond lengths			Bond angles		
					Counts	RMSZ	$\# Z > 2$	Counts	RMSZ	$\# Z > 2$
3	SO4	A	199	-	4,4,4	0.27	0	6,6,6	0.07	0
3	SO4	B	270	-	4,4,4	0.28	0	6,6,6	0.08	0
3	SO4	B	601	-	4,4,4	0.24	0	6,6,6	0.10	0
3	SO4	B	779	-	4,4,4	0.26	0	6,6,6	0.17	0
3	SO4	B	780	-	4,4,4	0.25	0	6,6,6	0.09	0
3	SO4	B	899	-	4,4,4	0.27	0	6,6,6	0.06	0
3	SO4	B	999	-	4,4,4	0.25	0	6,6,6	0.06	0
3	SO4	D	220	-	4,4,4	0.26	0	6,6,6	0.07	0
3	SO4	D	279	-	4,4,4	0.39	0	6,6,6	0.09	0
3	SO4	D	299	-	4,4,4	0.31	0	6,6,6	0.08	0
2	CGQ	D	3025	-	27,27,27	4.10	9 (33%)	35,35,35	1.04	2 (5%)
3	SO4	D	501	-	4,4,4	0.25	0	6,6,6	0.09	0
3	SO4	D	599	-	4,4,4	0.28	0	6,6,6	0.13	0
3	SO4	D	699	-	4,4,4	0.28	0	6,6,6	0.10	0
3	SO4	D	800	-	4,4,4	0.26	0	6,6,6	0.08	0
3	SO4	D	801	-	4,4,4	0.27	0	6,6,6	0.08	0
3	SO4	E	239	-	4,4,4	0.25	0	6,6,6	0.08	0
3	SO4	E	249	-	4,4,4	0.27	0	6,6,6	0.11	0
3	SO4	E	289	-	4,4,4	0.23	0	6,6,6	0.07	0
3	SO4	E	399	-	4,4,4	0.24	0	6,6,6	0.06	0
3	SO4	E	799	-	4,4,4	0.26	0	6,6,6	0.07	0
3	SO4	E	900	-	4,4,4	0.28	0	6,6,6	0.08	0

In the following table, the Chirals column lists the number of chiral outliers, the number of chiral centers analysed, the number of these observed in the model and the number defined in the chemical component dictionary. Similar counts are reported in the Torsion and Rings columns. '-' means no outliers of that kind were identified.

Mol	Type	Chain	Res	Link	Chirals	Torsions	Rings
3	SO4	A	199	-	-	0/0/0/0	0/0/0/0
3	SO4	B	270	-	-	0/0/0/0	0/0/0/0
3	SO4	B	601	-	-	0/0/0/0	0/0/0/0
3	SO4	B	779	-	-	0/0/0/0	0/0/0/0
3	SO4	B	780	-	-	0/0/0/0	0/0/0/0
3	SO4	B	899	-	-	0/0/0/0	0/0/0/0
3	SO4	B	999	-	-	0/0/0/0	0/0/0/0
3	SO4	D	220	-	-	0/0/0/0	0/0/0/0
3	SO4	D	279	-	-	0/0/0/0	0/0/0/0
3	SO4	D	299	-	-	0/0/0/0	0/0/0/0
2	CGQ	D	3025	-	-	0/19/20/20	0/2/2/2
3	SO4	D	501	-	-	0/0/0/0	0/0/0/0
3	SO4	D	599	-	-	0/0/0/0	0/0/0/0
3	SO4	D	699	-	-	0/0/0/0	0/0/0/0
3	SO4	D	800	-	-	0/0/0/0	0/0/0/0
3	SO4	D	801	-	-	0/0/0/0	0/0/0/0
3	SO4	E	239	-	-	0/0/0/0	0/0/0/0
3	SO4	E	249	-	-	0/0/0/0	0/0/0/0
3	SO4	E	289	-	-	0/0/0/0	0/0/0/0
3	SO4	E	399	-	-	0/0/0/0	0/0/0/0
3	SO4	E	799	-	-	0/0/0/0	0/0/0/0
3	SO4	E	900	-	-	0/0/0/0	0/0/0/0

All (9) bond length outliers are listed below:

Mol	Chain	Res	Type	Atoms	Z	Observed(Å)	Ideal(Å)
2	D	3025	CGQ	N12-N8	-13.78	1.23	1.38
2	D	3025	CGQ	C1-C9	-9.31	1.39	1.48
2	D	3025	CGQ	C26-C28	-9.17	1.39	1.48
2	D	3025	CGQ	C21-N20	5.19	1.33	1.28
2	D	3025	CGQ	C7-N8	4.21	1.32	1.28
2	D	3025	CGQ	C22-C21	-3.89	1.39	1.46
2	D	3025	CGQ	C3-C7	-3.86	1.39	1.46
2	D	3025	CGQ	C9-N11	2.20	1.33	1.31
2	D	3025	CGQ	C28-N30	2.10	1.33	1.31

All (2) bond angle outliers are listed below:

Mol	Chain	Res	Type	Atoms	Z	Observed($^{\circ}$)	Ideal($^{\circ}$)
2	D	3025	CGQ	C7-N8-N12	4.04	122.42	115.87
2	D	3025	CGQ	C3-C7-N8	-2.40	118.07	121.39

There are no chirality outliers.

There are no torsion outliers.

There are no ring outliers.

5.7 Other polymers ⓘ

There are no such residues in this entry.

5.8 Polymer linkage issues

There are no chain breaks in this entry.

6 Fit of model and data ⓘ

6.1 Protein, DNA and RNA chains ⓘ

In the following table, the column labelled ‘#RSRZ> 2’ contains the number (and percentage) of RSRZ outliers, followed by percent RSRZ outliers for the chain as percentile scores relative to all X-ray entries and entries of similar resolution. The OWAB column contains the minimum, median, 95th percentile and maximum values of the occupancy-weighted average B-factor per residue. The column labelled ‘Q< 0.9’ lists the number of (and percentage) of residues with an average occupancy less than 0.9.

Mol	Chain	Analysed	<RSRZ>	#RSRZ>2		OWAB(Å ²)	Q<0.9
1	A	186/188 (98%)	0.85	26 (13%)	3 4	50, 88, 143, 164	0
1	B	186/188 (98%)	0.61	22 (11%)	5 7	59, 90, 117, 124	0
1	D	186/188 (98%)	0.29	9 (4%)	29 36	39, 63, 106, 130	0
1	E	186/188 (98%)	0.48	12 (6%)	18 22	51, 74, 103, 120	0
All	All	744/752 (98%)	0.56	69 (9%)	8 11	39, 78, 123, 164	0

All (69) RSRZ outliers are listed below:

Mol	Chain	Res	Type	RSRZ
1	A	40	TYR	7.8
1	A	34	SER	7.1
1	E	138	GLY	5.3
1	A	112	ILE	4.9
1	A	41	TYR	4.7
1	A	187	SER	4.7
1	A	42	HIS	4.6
1	A	113	ASN	4.4
1	A	31	LEU	4.3
1	B	109	THR	4.0
1	D	114	GLU	3.9
1	B	112	ILE	3.6
1	A	141	SER	3.4
1	A	108	LYS	3.4
1	E	141	SER	3.2
1	B	108	LYS	3.1
1	D	138	GLY	3.1
1	B	141	SER	3.1
1	A	29	VAL	3.1
1	E	108	LYS	3.0
1	B	7	ILE	3.0

Continued on next page...

Continued from previous page...

Mol	Chain	Res	Type	RSRZ
1	B	136	LEU	3.0
1	A	33	GLU	2.9
1	B	21	ASN	2.9
1	B	164	HIS	2.9
1	A	111	SER	2.9
1	E	41	TYR	2.8
1	E	164	HIS	2.7
1	A	103	TYR	2.7
1	E	103	TYR	2.7
1	E	137	ASN	2.7
1	D	107	TYR	2.7
1	D	118	LYS	2.7
1	B	187	SER	2.7
1	D	164	HIS	2.6
1	B	110	ASN	2.6
1	A	107	TYR	2.6
1	B	3	LEU	2.6
1	A	114	GLU	2.6
1	A	30	LYS	2.6
1	B	106	TYR	2.4
1	B	41	TYR	2.4
1	A	32	SER	2.4
1	A	43	PHE	2.4
1	E	110	ASN	2.3
1	A	184	ASN	2.3
1	B	113	ASN	2.3
1	E	107	TYR	2.3
1	B	143	ASN	2.3
1	D	136	LEU	2.3
1	E	142	ILE	2.3
1	A	24	THR	2.3
1	B	123	TYR	2.3
1	D	143	ASN	2.2
1	D	184	ASN	2.2
1	D	115	LYS	2.2
1	A	17	LYS	2.2
1	A	154	ASN	2.2
1	E	113	ASN	2.2
1	B	103	TYR	2.1
1	B	122	LYS	2.1
1	A	28	ILE	2.1
1	B	107	TYR	2.1

Continued on next page...

Continued from previous page...

Mol	Chain	Res	Type	RSRZ
1	B	132	LYS	2.1
1	A	109	THR	2.1
1	E	158	GLY	2.1
1	B	73	LYS	2.1
1	B	117	ASN	2.0
1	A	133	GLU	2.0

6.2 Non-standard residues in protein, DNA, RNA chains ⓘ

There are no non-standard protein/DNA/RNA residues in this entry.

6.3 Carbohydrates ⓘ

There are no carbohydrates in this entry.

6.4 Ligands ⓘ

In the following table, the Atoms column lists the number of modelled atoms in the group and the number defined in the chemical component dictionary. LLDF column lists the quality of electron density of the group with respect to its neighbouring residues in protein, DNA or RNA chains. The B-factors column lists the minimum, median, 95th percentile and maximum values of B factors of atoms in the group. The column labelled 'Q< 0.9' lists the number of atoms with occupancy less than 0.9.

Mol	Type	Chain	Res	Atoms	RSR	LLDF	B-factors(Å ²)	Q<0.9
3	SO4	B	270	5/5	0.44	11.61	200,200,200,200	0
2	CGQ	D	3025	26/26	0.76	11.17	198,200,200,200	0
3	SO4	A	199	5/5	0.69	9.53	199,200,200,200	0
3	SO4	D	599	5/5	0.65	9.21	132,134,135,135	0
3	SO4	D	501	5/5	0.47	7.62	141,142,142,143	0
3	SO4	B	779	5/5	0.78	5.15	200,200,200,200	0
3	SO4	B	899	5/5	0.41	4.70	168,169,169,169	0
3	SO4	D	220	5/5	0.33	4.54	175,175,175,175	0
3	SO4	D	800	5/5	0.29	3.32	174,174,174,174	0
3	SO4	D	801	5/5	0.44	2.93	189,189,189,189	0
3	SO4	E	239	5/5	0.38	2.74	177,177,177,178	0
3	SO4	D	699	5/5	0.27	2.54	163,163,164,164	0
3	SO4	B	780	5/5	0.44	2.47	168,169,169,169	0
3	SO4	E	249	5/5	0.34	2.15	152,153,153,154	0
3	SO4	B	601	5/5	0.57	1.68	188,188,188,188	0

Continued on next page...

Continued from previous page...

Mol	Type	Chain	Res	Atoms	RSR	LLDF	B-factors(\AA^2)	Q<0.9
3	SO4	E	399	5/5	0.27	1.62	172,172,172,172	0
3	SO4	E	799	5/5	0.26	1.54	119,119,119,120	0
3	SO4	E	289	5/5	0.40	1.48	172,172,173,173	0
3	SO4	D	279	5/5	0.22	1.14	106,108,108,108	0
3	SO4	B	999	5/5	0.32	0.28	165,166,166,166	0
3	SO4	E	900	5/5	0.15	-1.03	122,122,123,123	0
3	SO4	D	299	5/5	0.10	-3.69	120,122,122,122	0

6.5 Other polymers ⓘ

There are no such residues in this entry.