



Full wwPDB X-ray Structure Validation Report

Feb 27, 2014 – 11:47 PM GMT

PDB ID : 4G0K
Title : Glutathionyl-hydroquinonereductase, YqjG, of E.coli complexed with GS-menadione
Authors : Green, A.R.; Hayes, R.P.; Xun, L.; Kang, C.
Deposited on : 2012-07-09
Resolution : 2.56 Å(reported)

This is a full wwPDB validation report for a publicly released PDB entry.
We welcome your comments at validation@mail.wwpdb.org
A user guide is available at <http://wwpdb.org/ValidationPDFNotes.html>

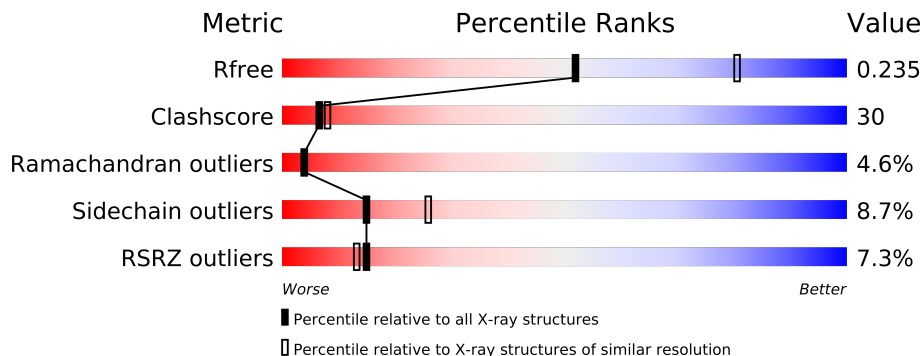
The following versions of software and data (see [references](#)) were used in the production of this report:

MolProbity : 4.02b-467
Mogul : 1.15 2013
Xtriage (Phenix) : dev-1323
EDS : stable22639
Percentile statistics : 21963
Refmac : 5.8.0049
CCP4 : 6.3.0 (Settle)
Ideal geometry (proteins) : Engh & Huber (2001)
Ideal geometry (DNA, RNA) : Parkinson et. al. (1996)
Validation Pipeline (wwPDB-VP) : stable22683

1 Overall quality at a glance

The reported resolution of this entry is 2.56 Å.

Percentile scores (ranging between 0-100) for global validation metrics of the entry are shown in the following graphic. The table shows the number of entries on which the scores are based.



Metric	Whole archive (#Entries)	Similar resolution (#Entries, resolution range(Å))
R_{free}	66092	2347 (2.60-2.52)
Clashscore	79885	2876 (2.60-2.52)
Ramachandran outliers	78287	2826 (2.60-2.52)
Sidechain outliers	78261	2826 (2.60-2.52)
RSRZ outliers	66119	2347 (2.60-2.52)

The table below summarises the geometric issues observed across the polymeric chains and their fit to the electron density. The red, orange, yellow and green segments on the lower bar indicate the fraction of residues that contain outliers for ≥ 3 , 2, 1 and 0 types of geometric quality criteria. The upper red bar (where present) indicates the fraction of residues that have poor fit to the electron density.

Mol	Chain	Length	Quality of chain
1	A	328	
1	B	328	

The following table lists non-polymeric compounds that are outliers for geometric or electron-density-fit criteria:

Mol	Type	Chain	Res	Geometry	Electron density
2	SO4	A	402	-	X
2	SO4	A	405	-	X
2	SO4	A	407	-	X
2	SO4	B	402	-	X
2	SO4	B	405	-	X
2	SO4	B	406	-	X

Continued on next page...

Continued from previous page...

Mol	Type	Chain	Res	Geometry	Electron density
2	SO4	B	407	-	X
2	SO4	B	408	-	X
3	MES	A	408	-	X
3	MES	A	409	-	X
3	MES	A	410	-	X
3	MES	B	409	-	X

2 Entry composition i

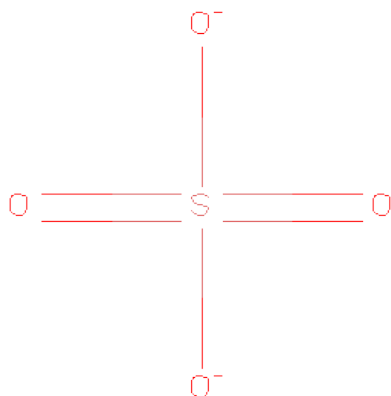
There are 5 unique types of molecules in this entry. The entry contains 5616 atoms, of which 0 are hydrogen and 0 are deuterium.

In the tables below, the ZeroOcc column contains the number of atoms modelled with zero occupancy, the AltConf column contains the number of residues with at least one atom in alternate conformation and the Trace column contains the number of residues modelled with at most 2 atoms.

- Molecule 1 is a protein called protein yqjG.

Mol	Chain	Residues	Atoms					ZeroOcc	AltConf	Trace
1	A	327	Total	C	N	O	S	0	1	0
			2644	1698	453	486	7			
1	B	327	Total	C	N	O	S	0	1	0
			2644	1698	453	486	7			

- Molecule 2 is SULFATE ION (three-letter code: SO₄) (formula: O₄S).



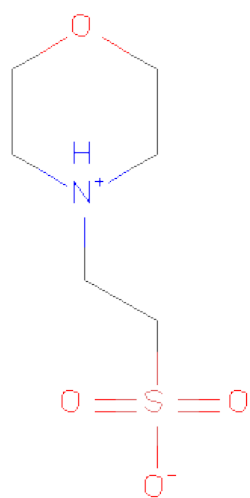
Mol	Chain	Residues	Atoms			ZeroOcc	AltConf
2	A	1	Total	O	S	0	0
			5	4	1		
2	A	1	Total	O	S	0	0
			5	4	1		
2	A	1	Total	O	S	0	0
			5	4	1		
2	A	1	Total	O	S	0	0
			5	4	1		

Continued on next page...

Continued from previous page...

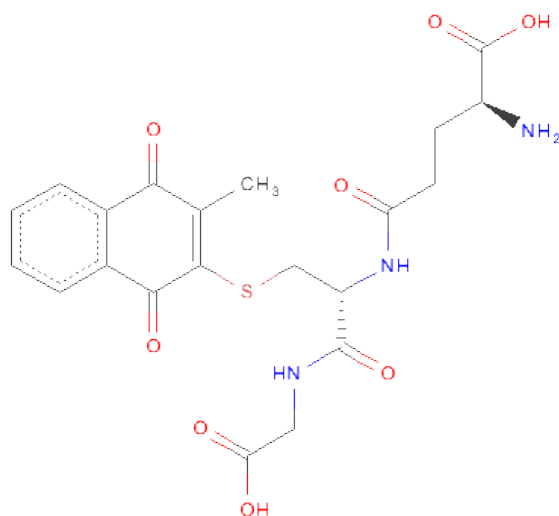
Mol	Chain	Residues	Atoms			ZeroOcc	AltConf
2	A	1	Total	O	S	0	0
			5	4	1		
2	A	1	Total	O	S	0	0
			5	4	1		
2	A	1	Total	O	S	0	0
			5	4	1		
2	B	1	Total	O	S	0	0
			5	4	1		
2	B	1	Total	O	S	0	0
			5	4	1		
2	B	1	Total	O	S	0	0
			5	4	1		
2	B	1	Total	O	S	0	0
			5	4	1		
2	B	1	Total	O	S	0	0
			5	4	1		
2	B	1	Total	O	S	0	0
			5	4	1		

- Molecule 3 is 2-(N-MORPHOLINO)-ETHANESULFONICACID (three-letter code: MES) (formula: C₆H₁₃NO₄S).



Mol	Chain	Residues	Atoms					ZeroOcc	AltConf
3	A	1	Total	C	N	O	S	0	0
			12	6	1	4	1		
3	A	1	Total	C	N	O	S	0	0
			12	6	1	4	1		
3	A	1	Total	C	N	O	S	0	0
			12	6	1	4	1		
3	B	1	Total	C	N	O	S	0	0
			12	6	1	4	1		

- Molecule 4 is L-GAMMA-GLUTAMYL-S-(3-METHYL-1,4-DIOXO-1,4-DIHYDRO NAPHTHALEN-2-YL)-L-CYSTEINYLGLYCINE (three-letter code: 0VS) (formula: C₂₁H₂₃N₃O₈S).



Mol	Chain	Residues	Atoms					ZeroOcc	AltConf
4	A	1	Total	C	N	O	S	0	0
			33	21	3	8	1		
4	B	1	Total	C	N	O	S	0	0
			33	21	3	8	1		

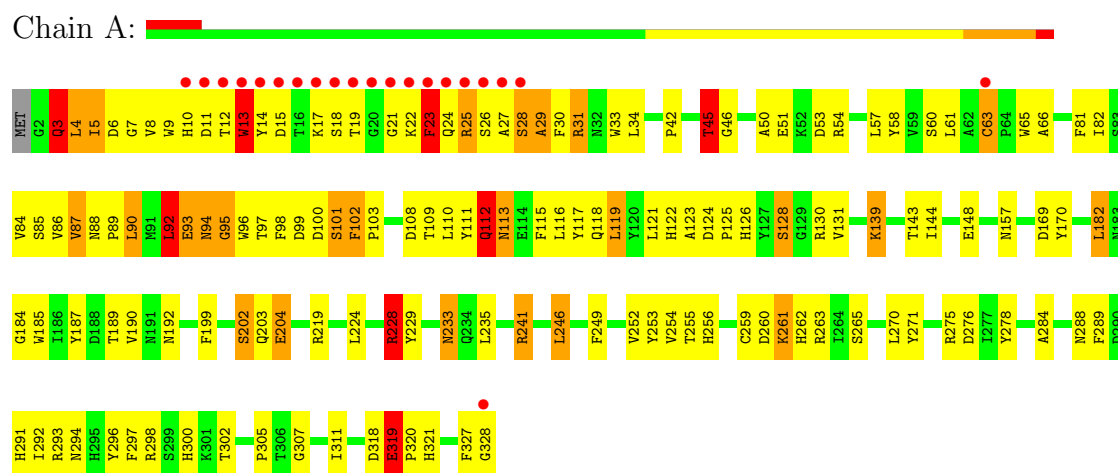
- Molecule 5 is water.

Mol	Chain	Residues	Atoms		ZeroOcc	AltConf
5	A	79	Total	O	0	0
			79	79		
5	B	60	Total	O	0	0
			60	60		

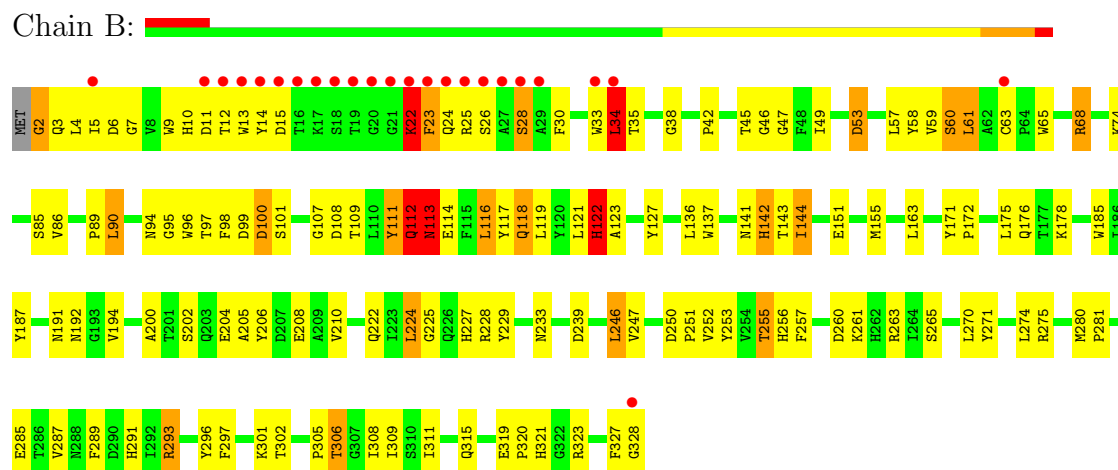
3 Residue-property plots

These plots are drawn for all protein, RNA and DNA chains in the entry. The first graphic for a chain summarises the proportions of errors displayed in the second graphic. The second graphic shows the sequence view annotated by issues in geometry and electron density. Residues are color-coded according to the number of geometric quality criteria for which they contain at least one outlier: green = 0, yellow = 1, orange = 2 and red = 3 or more. A red dot above a residue indicates a poor fit to the electron density ($RSRZ > 2$). Stretches of 2 or more consecutive residues without any outlier are shown as a green connector. Residues present in the sample, but not in the model, are shown in grey.

• Molecule 1: protein yqjG



• Molecule 1: protein yqjG



4 Data and refinement statistics

Property	Value	Source
Space group	P 31 2 1	Depositor
Cell constants a, b, c, α , β , γ	148.41Å 148.41Å 105.17Å 90.00° 90.00° 120.00°	Depositor
Resolution (Å)	48.67 – 2.56 48.67 – 2.56	Depositor EDS
% Data completeness (in resolution range)	91.2 (48.67-2.56) 91.3 (48.67-2.56)	Depositor EDS
R_{merge}	(Not available)	Depositor
R_{sym}	(Not available)	Depositor
$\langle I/\sigma(I) \rangle$ ¹	0.93 (at 2.54Å)	Xtriage
Refinement program	PHENIX (phenix.refine: 1.6.1.357)	Depositor
R, R_{free}	0.191 , 0.238 0.189 , 0.235	Depositor DCC
R_{free} test set	1877 reflections (4.73%)	DCC
Wilson B-factor (Å ²)	46.4	Xtriage
Anisotropy	0.154	Xtriage
Bulk solvent k_{sol} (e/Å ³), B_{sol} (Å ²)	0.35 , 44.0	EDS
Estimated twinning fraction	0.024 for -h,-k,l	Xtriage
L-test for twinning	$\langle L \rangle = 0.51$, $\langle L^2 \rangle = 0.35$	Xtriage
Outliers	0 of 42588 reflections	Xtriage
F_o, F_c correlation	0.94	EDS
Total number of atoms	5616	wwPDB-VP
Average B, all atoms (Å ²)	58.0	wwPDB-VP

Xtriage's analysis on translational NCS is as follows: *The largest off-origin peak in the Patterson function is 5.14% of the height of the origin peak. No significant pseudotranslation is detected.*

¹Intensities estimated from amplitudes.

5 Model quality ⓘ

5.1 Standard geometry ⓘ

Bond lengths and bond angles in the following residue types are not validated in this section: 0VS, SO4, MES

The Z score for a bond length (or angle) is the number of standard deviations the observed value is removed from the expected value. A bond length (or angle) with $|Z| > 5$ is considered an outlier worth inspection. RMSZ is the root-mean-square of all Z scores of the bond lengths (or angles).

Mol	Chain	Bond lengths		Bond angles	
		RMSZ	# $ Z > 5$	RMSZ	# $ Z > 5$
1	A	1.34	12/2727 (0.4%)	1.17	16/3714 (0.4%)
1	B	1.31	12/2727 (0.4%)	1.18	14/3714 (0.4%)
All	All	1.32	24/5454 (0.4%)	1.18	30/7428 (0.4%)

All (24) bond length outliers are listed below:

Mol	Chain	Res	Type	Atoms	Z	Observed(Å)	Ideal(Å)
1	A	204	GLU	CD-OE1	18.39	1.45	1.25
1	A	204	GLU	CD-OE2	16.90	1.44	1.25
1	B	204	GLU	CD-OE2	15.92	1.43	1.25
1	B	204	GLU	CD-OE1	13.95	1.41	1.25
1	A	185	TRP	CB-CG	-10.37	1.31	1.50
1	B	185	TRP	CB-CG	-10.27	1.31	1.50
1	B	204	GLU	CB-CG	9.62	1.70	1.52
1	A	63[A]	CYS	CB-SG	-8.76	1.67	1.82
1	A	63[B]	CYS	CB-SG	-8.76	1.67	1.82
1	B	204	GLU	CG-CD	8.56	1.64	1.51
1	A	319	GLU	CG-CD	8.18	1.64	1.51
1	A	204	GLU	CG-CD	7.79	1.63	1.51
1	A	259	CYS	CB-SG	-7.03	1.70	1.82
1	B	233	ASN	CB-CG	6.75	1.66	1.51
1	A	204	GLU	CB-CG	6.55	1.64	1.52
1	A	319	GLU	CD-OE2	6.34	1.32	1.25
1	A	84	VAL	CB-CG2	6.14	1.65	1.52
1	B	113	ASN	CB-CG	6.13	1.65	1.51
1	B	113	ASN	CG-OD1	6.03	1.37	1.24
1	A	148	GLU	CD-OE2	5.92	1.32	1.25
1	B	90	LEU	CG-CD2	5.66	1.72	1.51
1	B	2	GLY	C-O	5.52	1.32	1.23
1	B	247	VAL	CB-CG1	-5.28	1.41	1.52
1	B	247	VAL	CA-CB	5.17	1.65	1.54

All (30) bond angle outliers are listed below:

Mol	Chain	Res	Type	Atoms	Z	Observed(°)	Ideal(°)
1	B	293	ARG	NE-CZ-NH1	-9.18	115.71	120.30
1	A	34	LEU	CB-CG-CD2	-8.88	95.91	111.00
1	A	228	ARG	NE-CZ-NH1	7.89	124.25	120.30
1	A	228	ARG	NE-CZ-NH2	-7.73	116.43	120.30
1	B	263	ARG	NE-CZ-NH2	-7.41	116.59	120.30
1	B	228	ARG	NE-CZ-NH1	-7.20	116.70	120.30
1	A	113	ASN	CB-CA-C	-7.08	96.24	110.40
1	B	260	ASP	CB-CG-OD1	6.93	124.54	118.30
1	A	57	LEU	CB-CG-CD2	-6.58	99.81	111.00
1	B	250	ASP	CB-CG-OD2	6.53	124.17	118.30
1	A	92	LEU	CA-CB-CG	6.39	129.99	115.30
1	B	250	ASP	CB-CG-OD1	-6.38	112.55	118.30
1	A	90	LEU	N-CA-CB	-6.27	97.86	110.40
1	B	34	LEU	CB-CG-CD1	-6.15	100.54	111.00
1	A	31	ARG	NE-CZ-NH2	-6.05	117.28	120.30
1	B	61	LEU	CB-CG-CD2	-5.97	100.85	111.00
1	B	53	ASP	CB-CG-OD1	-5.91	112.99	118.30
1	B	57	LEU	CB-CG-CD2	-5.91	100.96	111.00
1	A	241	ARG	NE-CZ-NH2	-5.86	117.37	120.30
1	A	90	LEU	CA-CB-CG	-5.75	102.08	115.30
1	A	263	ARG	NE-CZ-NH2	-5.54	117.53	120.30
1	A	139	LYS	CD-CE-NZ	5.43	124.18	111.70
1	A	219	ARG	NE-CZ-NH1	-5.40	117.60	120.30
1	B	155	MET	CG-SD-CE	-5.37	91.61	100.20
1	A	45	THR	CB-CA-C	-5.35	97.16	111.60
1	A	182	LEU	CA-CB-CG	5.32	127.54	115.30
1	B	163	LEU	CB-CG-CD2	-5.28	102.03	111.00
1	B	224	LEU	CA-CB-CG	5.16	127.17	115.30
1	B	68	ARG	NE-CZ-NH1	-5.07	117.77	120.30
1	A	219	ARG	NE-CZ-NH2	5.02	122.81	120.30

There are no chirality outliers.

There are no planarity outliers.

5.2 Close contacts ⓘ

In the following table, the Non-H and H(model) columns list the number of non-hydrogen atoms and hydrogen atoms in the chain respectively. The H(added) column lists the number of hydrogens added by MolProbity. The Clashes column lists the number of clashes within the asymmetric unit, and the number in parentheses is this value normalized per 1000 atoms of the molecule in the

chain. The Symm-Clashes column gives symmetry related clashes, in the same way as for the Clashes column.

Mol	Chain	Non-H	H(model)	H(added)	Clashes	Symm-Clashes
1	A	2644	0	2530	173	0
1	B	2644	0	2530	143	0
2	A	35	0	0	0	0
2	B	40	0	0	2	0
3	A	36	0	36	12	0
3	B	12	0	12	0	0
4	A	33	0	21	10	0
4	B	33	0	21	4	0
5	A	79	0	0	8	2
5	B	60	0	0	8	2
All	All	5616	0	5150	314	2

Clashscore is defined as the number of clashes calculated for the entry per 1000 atoms (including hydrogens) of the entry. The overall clashscore for this entry is 30.

All (314) close contacts within the same asymmetric unit are listed below.

Atom-1	Atom-2	Distance(Å)	Clash(Å)
1:A:63[A]:CYS:SG	1:A:66:ALA:HB3	1.84	1.17
1:A:26:SER:HB2	1:A:128:SER:O	1.44	1.16
1:A:27:ALA:O	1:A:29:ALA:N	1.89	1.05
1:A:22:LYS:C	1:A:23:PHE:CD1	2.30	1.05
1:B:85:SER:OG	1:B:109:THR:HG22	1.55	1.02
1:B:255:THR:CG2	5:B:511:HOH:O	2.06	1.01
1:B:255:THR:HG23	5:B:511:HOH:O	1.61	1.00
1:A:131:VAL:HG12	1:A:131:VAL:O	1.61	0.99
1:A:260:ASP:OD2	1:B:255:THR:HG21	1.63	0.98
1:A:23:PHE:HA	1:A:24:GLN:HB2	1.44	0.97
1:B:97:THR:HG22	1:B:99:ASP:H	1.28	0.96
1:B:24:GLN:HG2	1:B:25:ARG:HG3	1.50	0.93
1:A:22:LYS:C	1:A:23:PHE:HD1	1.72	0.91
1:A:26:SER:CB	1:A:128:SER:O	2.17	0.91
1:A:63[A]:CYS:SG	1:A:66:ALA:CB	2.59	0.90
1:A:97:THR:HG22	1:A:99:ASP:H	1.37	0.87
1:A:22:LYS:O	1:A:23:PHE:HD1	1.58	0.86
1:B:100:ASP:OD1	1:B:101:SER:N	2.10	0.84
1:B:321:HIS:CD2	1:B:323:ARG:H	1.96	0.83
1:A:318:ASP:OD1	5:A:544:HOH:O	1.95	0.83
1:A:27:ALA:C	1:A:29:ALA:H	1.78	0.83
1:A:199:PHE:HZ	1:A:300:HIS:HD1	1.23	0.82
1:A:327:PHE:HB3	1:A:328:GLY:HA3	1.59	0.82

Continued on next page...

Continued from previous page...

Atom-1	Atom-2	Distance(Å)	Clash(Å)
1:A:24:GLN:H	1:A:27:ALA:H	1.24	0.81
1:B:100:ASP:CG	1:B:101:SER:H	1.84	0.81
1:A:260:ASP:O	1:A:261:LYS:CB	2.29	0.80
1:B:34:LEU:HD12	1:B:34:LEU:C	2.02	0.80
1:B:4:LEU:HD13	1:B:117:TYR:HB2	1.64	0.78
1:B:321:HIS:HD2	1:B:323:ARG:H	1.30	0.77
1:A:89:PRO:HG3	1:A:291:HIS:ND1	1.99	0.77
1:B:113:ASN:ND2	1:B:118:GLN:HB3	1.99	0.77
1:A:97:THR:CG2	1:A:99:ASP:H	1.97	0.76
1:A:51:GLU:O	5:A:548:HOH:O	2.02	0.76
1:B:111:TYR:HE2	1:B:137:TRP:CZ2	2.03	0.76
1:A:202:SER:HB2	3:A:409:MES:O2S	1.85	0.76
1:A:199:PHE:HZ	1:A:300:HIS:ND1	1.83	0.76
1:B:9:TRP:HE1	1:B:94:ASN:HA	1.51	0.76
1:A:260:ASP:O	1:A:261:LYS:HB2	1.87	0.74
1:A:9:TRP:CZ2	1:A:94:ASN:HA	2.23	0.74
1:B:202:SER:HB2	2:B:408:SO4:O2	1.87	0.74
1:B:60:SER:OG	5:B:507:HOH:O	2.06	0.74
1:B:256:HIS:HD2	1:B:257:PHE:CE1	2.07	0.73
1:B:306:THR:HB	1:B:308:ILE:HG12	1.71	0.73
1:B:5:ILE:HD12	1:B:10:HIS:CD2	2.25	0.72
1:A:24:GLN:C	1:A:26:SER:H	1.91	0.72
3:A:408:MES:H51	3:A:408:MES:O3S	1.90	0.72
1:B:224:LEU:HD12	1:B:270:LEU:HD23	1.72	0.71
1:B:97:THR:HG22	1:B:99:ASP:N	2.04	0.71
1:B:122:HIS:O	1:B:122:HIS:ND1	2.24	0.70
1:A:131:VAL:CG1	1:A:131:VAL:O	2.36	0.70
1:A:130:ARG:HD2	4:A:411:OVS:O24	1.91	0.70
1:A:27:ALA:C	1:A:29:ALA:N	2.41	0.70
1:B:33:TRP:CE2	1:B:42:PRO:HD2	2.27	0.70
1:B:256:HIS:HD2	1:B:257:PHE:CD1	2.10	0.69
1:A:113:ASN:O	5:A:538:HOH:O	2.09	0.69
1:A:30:PHE:C	1:A:31:ARG:HG2	2.11	0.69
1:A:45:THR:HG22	1:A:46:GLY:H	1.58	0.69
1:B:111:TYR:O	1:B:113:ASN:N	2.23	0.69
1:A:24:GLN:O	1:A:27:ALA:N	2.27	0.68
1:A:23:PHE:N	1:A:23:PHE:CD1	2.62	0.68
1:A:130:ARG:CD	4:A:411:OVS:O24	2.42	0.67
1:A:284:ALA:HB2	5:A:517:HOH:O	1.93	0.67
1:A:184:GLY:HA2	3:A:410:MES:H61	1.77	0.67
1:A:327:PHE:CB	1:A:328:GLY:HA3	2.22	0.67
1:A:108:ASP:HB3	1:A:112:GLN:HA	1.76	0.67

Continued on next page...

Continued from previous page...

Atom-1	Atom-2	Distance(Å)	Clash(Å)
1:A:9:TRP:CE2	1:A:94:ASN:HA	2.29	0.67
1:A:233:ASN:H	1:A:233:ASN:HD22	1.42	0.67
1:A:110:LEU:HB3	1:A:111:TYR:CE1	2.30	0.67
1:B:275:ARG:HG3	1:B:275:ARG:HH11	1.58	0.67
1:A:24:GLN:C	1:A:26:SER:N	2.43	0.67
1:B:113:ASN:HB3	1:B:118:GLN:OE1	1.94	0.67
1:A:60:SER:HB3	1:A:63[A]:CYS:SG	2.34	0.66
1:A:9:TRP:NE1	1:A:94:ASN:HA	2.11	0.66
1:B:256:HIS:CD2	1:B:257:PHE:CE1	2.85	0.65
1:A:111:TYR:CD1	1:A:111:TYR:N	2.62	0.65
1:B:137:TRP:CE3	1:B:144:ILE:HD13	2.32	0.65
1:A:260:ASP:O	1:B:311:ILE:CG2	2.44	0.65
1:A:278:TYR:O	5:A:517:HOH:O	2.14	0.65
1:B:111:TYR:CD1	1:B:111:TYR:N	2.61	0.64
1:B:30:PHE:HB3	1:B:144:ILE:CG2	2.27	0.64
1:B:30:PHE:HB3	1:B:144:ILE:HG21	1.78	0.64
1:A:24:GLN:O	1:A:26:SER:N	2.30	0.64
1:A:100:ASP:O	5:A:537:HOH:O	2.15	0.63
1:B:255:THR:HG22	5:B:511:HOH:O	1.84	0.62
1:B:9:TRP:NE1	1:B:94:ASN:HA	2.14	0.61
1:B:74:LYS:HE3	1:B:285:GLU:OE1	2.00	0.61
1:A:235:LEU:H	3:A:408:MES:H31	1.65	0.61
1:A:115:PHE:CB	1:A:117:TYR:CE2	2.84	0.61
1:B:108:ASP:OD1	1:B:108:ASP:C	2.39	0.61
1:B:2:GLY:CA	1:B:9:TRP:CH2	2.84	0.60
1:B:121:LEU:C	1:B:123:ALA:H	2.05	0.60
1:A:256:HIS:HB2	1:A:297:PHE:CE1	2.36	0.60
1:A:229:TYR:OH	5:A:549:HOH:O	2.12	0.60
1:B:321:HIS:HD2	1:B:323:ARG:HB2	1.67	0.60
1:B:112:GLN:H	1:B:112:GLN:CD	2.04	0.59
1:A:110:LEU:HB3	1:A:111:TYR:CD1	2.37	0.59
1:A:305:PRO:HG3	1:B:305:PRO:CG	2.33	0.59
1:A:3:GLN:HG2	1:A:14:TYR:CB	2.32	0.59
1:B:187:TYR:O	1:B:192:ASN:HB2	2.03	0.59
1:A:288:ASN:OD1	1:A:291:HIS:HD2	1.86	0.58
1:A:9:TRP:CZ2	1:A:95:GLY:N	2.71	0.58
1:A:228:ARG:HD2	1:A:229:TYR:CZ	2.38	0.58
1:A:288:ASN:O	1:A:292:ILE:HG13	2.03	0.58
1:B:33:TRP:NE1	1:B:42:PRO:HD2	2.18	0.58
1:A:275:ARG:NH2	1:A:321:HIS:HA	2.18	0.57
1:A:22:LYS:HA	1:A:23:PHE:CE1	2.39	0.57
1:B:321:HIS:CD2	1:B:323:ARG:HB2	2.40	0.57

Continued on next page...

Continued from previous page...

Atom-1	Atom-2	Distance(Å)	Clash(Å)
1:A:123:ALA:O	1:A:124:ASP:HB2	2.05	0.57
1:B:30:PHE:CG	1:B:144:ILE:HG21	2.40	0.57
1:A:3:GLN:HG2	1:A:14:TYR:HB2	1.86	0.57
1:B:137:TRP:HE3	1:B:144:ILE:CD1	2.18	0.57
1:B:38:GLY:O	1:B:47:GLY:HA2	2.05	0.57
1:A:5:ILE:O	1:A:7:GLY:N	2.38	0.57
1:A:4:LEU:HD12	1:A:9:TRP:HA	1.86	0.56
1:A:241:ARG:HH12	3:A:410:MES:H72	1.70	0.56
1:B:256:HIS:HB2	1:B:297:PHE:CE1	2.41	0.56
1:A:157:ASN:HD21	1:A:170:TYR:H	1.53	0.56
1:A:275:ARG:HH21	1:A:321:HIS:HA	1.71	0.56
1:A:224:LEU:HD12	1:A:270:LEU:HD23	1.88	0.56
1:B:65:TRP:CZ3	4:B:410:OVS:H7	2.41	0.56
1:A:125:PRO:HB2	1:A:126:HIS:CD2	2.42	0.55
1:B:289:PHE:O	1:B:293:ARG:HG3	2.06	0.55
1:A:233:ASN:N	1:A:233:ASN:HD22	2.04	0.55
1:A:89:PRO:HG3	1:A:291:HIS:CG	2.42	0.55
1:B:33:TRP:CD1	1:B:33:TRP:N	2.74	0.55
1:A:12:THR:O	1:A:14:TYR:CD2	2.60	0.55
1:A:10:HIS:CD2	1:A:15:ASP:OD1	2.59	0.55
1:B:3:GLN:O	1:B:9:TRP:CE3	2.60	0.55
1:B:256:HIS:CD2	1:B:257:PHE:CD1	2.95	0.54
1:B:123:ALA:HB1	1:B:143:THR:HG22	1.89	0.54
1:B:137:TRP:CE3	1:B:144:ILE:CD1	2.90	0.54
1:B:45:THR:C	1:B:46:GLY:O	2.46	0.54
1:A:157:ASN:HD21	1:A:169:ASP:HA	1.72	0.54
1:A:260:ASP:O	1:B:311:ILE:HG23	2.07	0.54
1:B:2:GLY:HA2	1:B:9:TRP:CH2	2.43	0.54
1:B:137:TRP:CZ3	1:B:144:ILE:HD13	2.43	0.54
1:B:256:HIS:CE1	1:B:296:TYR:O	2.61	0.54
1:A:189:THR:OG1	1:A:190:VAL:HG23	2.08	0.54
1:A:97:THR:HG22	1:A:99:ASP:N	2.15	0.54
1:B:14:TYR:O	1:B:14:TYR:CG	2.61	0.54
1:A:111:TYR:HD1	1:A:111:TYR:N	2.06	0.53
1:A:115:PHE:CD2	1:A:117:TYR:CE2	2.95	0.53
1:A:157:ASN:ND2	1:A:170:TYR:H	2.05	0.53
1:B:98:PHE:CZ	1:B:116:LEU:HD23	2.44	0.53
1:A:22:LYS:CA	1:A:23:PHE:CD1	2.92	0.53
1:B:202:SER:HB2	2:B:408:SO4:S	2.48	0.53
1:A:294:ASN:OD1	1:A:298:ARG:HD3	2.09	0.53
1:B:12:THR:HG23	1:B:14:TYR:HE2	1.74	0.53
1:B:9:TRP:CZ2	1:B:94:ASN:O	2.62	0.53

Continued on next page...

Continued from previous page...

Atom-1	Atom-2	Distance(Å)	Clash(Å)
1:A:102:PHE:CD2	1:A:103:PRO:HD2	2.43	0.52
1:A:9:TRP:HE1	1:A:94:ASN:HA	1.73	0.52
4:B:410:OVS:C08	4:B:410:OVS:H5	2.39	0.52
1:A:87:VAL:HG21	1:A:96:TRP:CE3	2.44	0.52
1:A:130:ARG:HD3	4:A:411:OVS:O24	2.10	0.52
1:B:97:THR:HG22	1:B:99:ASP:CB	2.40	0.52
1:B:30:PHE:CB	1:B:144:ILE:HG21	2.40	0.52
1:A:110:LEU:C	1:A:111:TYR:HD1	2.13	0.51
1:B:222:GLN:O	1:B:225:GLY:HA3	2.10	0.51
1:B:206:TYR:CD2	1:B:206:TYR:C	2.84	0.51
1:A:130:ARG:HH11	4:A:411:OVS:H4	1.75	0.51
1:A:65:TRP:CZ3	4:A:411:OVS:H5	2.45	0.51
1:A:85:SER:OG	1:A:109:THR:HB	2.10	0.51
1:B:63[B]:CYS:SG	1:B:96:TRP:CZ2	3.04	0.51
1:B:151:GLU:OE1	5:B:532:HOH:O	2.19	0.51
1:A:60:SER:O	1:A:63[A]:CYS:SG	2.69	0.51
1:A:33:TRP:CD1	1:A:42:PRO:HD2	2.45	0.51
1:A:124:ASP:OD1	1:A:124:ASP:C	2.48	0.50
1:A:4:LEU:O	1:A:128:SER:HA	2.11	0.50
1:B:59:VAL:O	1:B:86:VAL:HA	2.11	0.50
1:A:187:TYR:O	1:A:192:ASN:HB2	2.11	0.50
1:B:14:TYR:O	1:B:14:TYR:CD1	2.64	0.50
1:A:261:LYS:HG2	1:A:262:HIS:CD2	2.47	0.50
1:B:2:GLY:C	1:B:9:TRP:CH2	2.85	0.50
1:A:289:PHE:O	1:A:293:ARG:HG3	2.11	0.50
1:A:24:GLN:HG2	1:A:25:ARG:H	1.76	0.49
1:A:288:ASN:OD1	1:A:291:HIS:CD2	2.65	0.49
1:A:110:LEU:HD21	1:A:139:LYS:HE2	1.92	0.49
1:B:275:ARG:HG3	1:B:275:ARG:NH1	2.26	0.49
1:B:22:LYS:HE3	1:B:22:LYS:HA	1.95	0.49
1:B:121:LEU:C	1:B:123:ALA:N	2.66	0.49
1:A:9:TRP:CZ2	1:A:94:ASN:CA	2.93	0.49
1:B:4:LEU:HD23	1:B:127:TYR:HD2	1.78	0.48
1:A:26:SER:O	1:A:27:ALA:C	2.51	0.48
1:A:50:ALA:O	1:A:51:GLU:HB3	2.13	0.48
1:A:5:ILE:HB	1:A:10:HIS:CD2	2.49	0.48
1:B:265:SER:HA	1:B:271:TYR:CG	2.48	0.48
1:B:65:TRP:CZ3	4:B:410:OVS:C28	2.97	0.48
1:A:311:ILE:HD11	1:B:261:LYS:HD2	1.95	0.48
1:B:315:GLN:NE2	5:B:510:HOH:O	2.46	0.48
1:B:112:GLN:NE2	1:B:112:GLN:H	2.10	0.48
1:A:199:PHE:HZ	1:A:300:HIS:CE1	2.31	0.48

Continued on next page...

Continued from previous page...

Atom-1	Atom-2	Distance(Å)	Clash(Å)
1:A:311:ILE:HG12	1:A:311:ILE:O	2.14	0.48
1:A:241:ARG:HH22	3:A:410:MES:H51	1.79	0.48
1:A:228:ARG:HD3	1:A:276:ASP:OD2	2.14	0.48
1:A:292:ILE:O	1:A:296:TYR:HD2	1.97	0.47
1:A:311:ILE:CD1	1:B:261:LYS:HD2	2.43	0.47
1:A:54:ARG:O	1:A:139:LYS:HB2	2.15	0.47
1:A:115:PHE:CG	1:A:117:TYR:CE2	3.02	0.47
1:B:172:PRO:HG2	1:B:175:LEU:HD12	1.95	0.47
1:B:58:TYR:CD1	1:B:85:SER:HB2	2.49	0.47
1:B:5:ILE:CD1	1:B:10:HIS:CD2	2.95	0.47
1:B:98:PHE:HB3	1:B:108:ASP:H	1.78	0.47
1:A:24:GLN:CG	1:A:25:ARG:H	2.28	0.47
1:A:9:TRP:HZ2	1:A:95:GLY:N	2.11	0.47
1:B:34:LEU:HD12	1:B:35:THR:N	2.29	0.47
1:A:13:TRP:C	1:A:15:ASP:HA	2.35	0.47
1:A:113:ASN:HB3	1:A:118:GLN:OE1	2.15	0.47
1:A:184:GLY:HA2	3:A:410:MES:C6	2.45	0.47
1:B:246:LEU:HA	1:B:246:LEU:HD12	1.51	0.47
1:B:34:LEU:HD23	1:B:136:LEU:HD21	1.97	0.47
3:A:408:MES:C5	3:A:408:MES:O3S	2.63	0.47
1:A:4:LEU:HD13	1:A:9:TRP:HE3	1.79	0.46
1:B:85:SER:OG	1:B:109:THR:CG2	2.46	0.46
1:A:204:GLU:N	3:A:409:MES:O2S	2.34	0.46
1:B:297:PHE:CD2	1:B:309:ILE:HG23	2.51	0.46
1:B:187:TYR:HA	1:B:191:ASN:HB2	1.97	0.46
1:B:98:PHE:O	1:B:107:GLY:HA2	2.15	0.46
1:B:321:HIS:HD2	1:B:323:ARG:N	2.06	0.46
4:B:410:OVS:H8	4:B:410:OVS:H5	1.98	0.46
1:A:110:LEU:CD2	1:A:139:LYS:HE2	2.46	0.46
1:A:115:PHE:HB3	1:A:117:TYR:CD2	2.51	0.46
1:A:124:ASP:HA	1:A:125:PRO:HD2	1.65	0.46
1:A:319:GLU:HA	1:A:320:PRO:HD2	1.62	0.46
1:B:287:VAL:O	1:B:287:VAL:HG12	2.14	0.46
1:B:96:TRP:N	5:B:520:HOH:O	2.29	0.46
1:A:307:GLY:O	5:A:547:HOH:O	2.21	0.46
1:B:108:ASP:O	1:B:112:GLN:HA	2.16	0.45
1:A:311:ILE:HD13	1:B:261:LYS:HB2	1.98	0.45
1:B:97:THR:C	1:B:99:ASP:H	2.20	0.45
1:A:99:ASP:OD2	1:A:101:SER:OG	2.23	0.45
1:B:194:VAL:O	1:B:257:PHE:CD2	2.69	0.45
1:B:97:THR:CG2	1:B:99:ASP:HB2	2.47	0.45
1:B:205:ALA:O	1:B:208:GLU:HB3	2.16	0.45

Continued on next page...

Continued from previous page...

Atom-1	Atom-2	Distance(Å)	Clash(Å)
1:A:143:THR:HB	1:A:144:ILE:H	1.62	0.45
1:A:246:LEU:HD12	1:A:246:LEU:HA	1.79	0.45
1:A:81:PHE:O	1:A:82:ILE:HG12	2.17	0.45
3:A:410:MES:H81	3:A:410:MES:H32	1.72	0.45
1:A:22:LYS:HA	1:A:23:PHE:CD1	2.52	0.45
1:B:111:TYR:HE2	1:B:137:TRP:HZ2	1.57	0.45
1:B:30:PHE:CG	1:B:144:ILE:CG2	3.00	0.45
1:B:22:LYS:HA	1:B:22:LYS:CE	2.47	0.45
1:A:119:LEU:HD22	1:A:119:LEU:HA	1.56	0.45
1:A:63[B]:CYS:SG	4:A:411:OVS:H8	2.57	0.44
1:A:65:TRP:CH2	4:A:411:OVS:H7	2.53	0.44
1:B:4:LEU:HD21	1:B:121:LEU:CD2	2.47	0.44
1:B:12:THR:HG23	1:B:14:TYR:CE2	2.50	0.44
1:B:97:THR:CG2	1:B:99:ASP:CB	2.96	0.44
1:B:141:ASN:O	1:B:142:HIS:C	2.56	0.44
1:B:2:GLY:HA2	1:B:9:TRP:CZ2	2.53	0.44
1:A:228:ARG:HH11	1:A:276:ASP:CG	2.20	0.44
1:A:121:LEU:HA	1:A:124:ASP:O	2.18	0.44
1:B:251:PRO:HG2	1:B:289:PHE:CE1	2.53	0.44
1:B:5:ILE:O	1:B:7:GLY:N	2.51	0.44
1:B:98:PHE:CD2	1:B:108:ASP:HB2	2.53	0.44
1:B:98:PHE:CG	1:B:108:ASP:HB2	2.52	0.44
1:B:327:PHE:HA	1:B:328:GLY:HA2	1.43	0.44
1:A:202:SER:HA	3:A:409:MES:H71	2.00	0.43
1:B:319:GLU:HA	1:B:320:PRO:HD2	1.81	0.43
1:A:92:LEU:H	1:A:92:LEU:HD23	1.82	0.43
1:B:97:THR:CG2	1:B:99:ASP:H	2.14	0.43
1:B:98:PHE:HB2	1:B:114:GLU:HA	1.99	0.43
1:A:12:THR:O	1:A:14:TYR:N	2.52	0.43
1:A:305:PRO:HG3	1:B:305:PRO:HG3	1.99	0.43
1:A:5:ILE:HD13	1:A:5:ILE:HA	1.92	0.43
1:A:9:TRP:HZ2	1:A:95:GLY:H	1.67	0.43
1:B:89:PRO:HG3	1:B:291:HIS:ND1	2.34	0.43
1:A:93:GLU:H	1:A:93:GLU:CD	2.21	0.43
1:A:26:SER:HB3	1:A:128:SER:O	2.14	0.43
1:A:88:ASN:HB2	1:A:99:ASP:O	2.18	0.43
1:B:265:SER:HA	1:B:271:TYR:CD1	2.53	0.43
1:B:229:TYR:HB3	1:B:239:ASP:OD1	2.19	0.43
1:B:30:PHE:HB3	1:B:144:ILE:HG22	2.00	0.43
1:A:254:VAL:HG12	1:A:255:THR:N	2.33	0.42
1:B:95:GLY:HA3	5:B:520:HOH:O	2.18	0.42
1:A:61:LEU:HD23	1:A:61:LEU:HA	1.37	0.42

Continued on next page...

Continued from previous page...

Atom-1	Atom-2	Distance(Å)	Clash(Å)
1:B:3:GLN:NE2	1:B:14:TYR:CD1	2.87	0.42
1:A:14:TYR:HD1	1:A:14:TYR:O	2.01	0.42
1:A:252:VAL:HG11	1:A:296:TYR:CG	2.55	0.42
1:B:246:LEU:HB3	1:B:274:LEU:HD13	2.00	0.42
1:A:24:GLN:NE2	1:A:25:ARG:HD3	2.34	0.42
1:B:30:PHE:CD1	1:B:144:ILE:HB	2.54	0.42
1:A:58:TYR:CE2	1:A:119:LEU:HD11	2.55	0.42
1:A:23:PHE:HA	1:A:24:GLN:CB	2.25	0.42
1:A:296:TYR:O	1:A:300:HIS:CD2	2.72	0.42
1:B:171:TYR:CD2	1:B:176:GLN:NE2	2.88	0.42
1:B:3:GLN:O	1:B:9:TRP:CZ3	2.73	0.42
1:A:86:VAL:HG12	1:A:87:VAL:O	2.20	0.42
1:A:4:LEU:CD1	1:A:9:TRP:HE3	2.33	0.41
1:B:26:SER:C	1:B:28:SER:H	2.23	0.41
1:A:233:ASN:H	1:A:233:ASN:ND2	2.11	0.41
1:A:110:LEU:C	1:A:111:TYR:CD1	2.92	0.41
1:A:115:PHE:HB2	1:A:117:TYR:CE2	2.55	0.41
1:B:280:MET:HA	1:B:281:PRO:HD3	1.90	0.41
1:B:306:THR:HB	1:B:308:ILE:CG1	2.47	0.41
1:A:97:THR:CG2	1:A:98:PHE:N	2.83	0.41
1:A:249:PHE:HA	1:A:253:TYR:CD2	2.56	0.41
1:A:265:SER:HA	1:A:271:TYR:CG	2.56	0.41
1:A:113:ASN:OD1	1:A:118:GLN:HB3	2.20	0.41
1:B:61:LEU:HD23	1:B:61:LEU:HA	1.85	0.41
1:B:23:PHE:HA	1:B:24:GLN:HA	1.86	0.41
1:B:194:VAL:HG21	1:B:253:TYR:CD2	2.56	0.41
1:A:27:ALA:O	1:A:28:SER:C	2.57	0.41
1:A:65:TRP:CZ3	4:A:411:OVS:C28	3.04	0.41
4:A:411:OVS:O17	4:A:411:OVS:C12	2.69	0.41
1:A:26:SER:CB	1:A:128:SER:C	2.88	0.41
1:A:115:PHE:CD2	1:A:117:TYR:CZ	3.09	0.40
1:A:130:ARG:NH1	4:A:411:OVS:H4	2.35	0.40
1:B:98:PHE:HB3	1:B:108:ASP:N	2.37	0.40
1:B:224:LEU:HD12	1:B:270:LEU:CD2	2.47	0.40
1:A:276:ASP:HA	1:A:321:HIS:CD2	2.56	0.40
1:B:68:ARG:HH22	1:B:191:ASN:ND2	2.19	0.40
1:A:92:LEU:HB2	1:A:93:GLU:H	1.73	0.40
1:B:28:SER:C	1:B:30:PHE:H	2.25	0.40
1:A:203:GLN:H	3:A:409:MES:H71	1.86	0.40

All (2) symmetry-related close contacts are listed below. The label for Atom-2 includes the symmetry operator and encoded unit-cell translations to be applied.

Atom-1	Atom-2	Distance(Å)	Clash(Å)
5:A:564:HOH:O	5:B:544:HOH:O[4_456]	1.93	0.27
5:A:574:HOH:O	5:B:554:HOH:O[4_456]	2.13	0.07

5.3 Torsion angles

5.3.1 Protein backbone ⓘ

In the following table, the Percentiles column shows the percent Ramachandran outliers of the chain as a percentile score with respect to all X-ray entries followed by that with respect to entries of similar resolution. The Analysed column shows the number of residues for which the backbone conformation was analysed, and the total number of residues.

Mol	Chain	Analysed	Favoured	Allowed	Outliers	Percentiles	
1	A	326/328 (99%)	276 (85%)	33 (10%)	17 (5%)	3	3
1	B	326/328 (99%)	269 (82%)	44 (14%)	13 (4%)	5	5
All	All	652/656 (99%)	545 (84%)	77 (12%)	30 (5%)	4	4

All (30) Ramachandran outliers are listed below:

Mol	Chain	Res	Type
1	A	6	ASP
1	A	11	ASP
1	A	13	TRP
1	A	19	THR
1	A	28	SER
1	A	29	ALA
1	A	87	VAL
1	A	112	GLN
1	A	261	LYS
1	B	6	ASP
1	B	11	ASP
1	B	28	SER
1	B	100	ASP
1	B	112	GLN
1	B	113	ASN
1	A	3	GLN
1	A	18	SER
1	A	25	ARG
1	A	92	LEU
1	A	95	GLY
1	B	22	LYS
1	B	122	HIS

Continued on next page...

Continued from previous page...

Mol	Chain	Res	Type
1	A	21	GLY
1	A	23	PHE
1	B	142	HIS
1	B	118	GLN
1	A	17	LYS
1	B	15	ASP
1	B	200	ALA
1	B	252	VAL

5.3.2 Protein sidechains ⓘ

In the following table, the Percentiles column shows the percent sidechain outliers of the chain as a percentile score with respect to all X-ray entries followed by that with respect to entries of similar resolution. The Analysed column shows the number of residues for which the sidechain conformation was analysed, and the total number of residues.

Mol	Chain	Analysed	Rotameric	Outliers	Percentiles	
1	A	278/278 (100%)	252 (91%)	26 (9%)	13	22
1	B	278/278 (100%)	256 (92%)	22 (8%)	18	32
All	All	556/556 (100%)	508 (91%)	48 (9%)	15	26

All (48) residues with a non-rotameric sidechain are listed below:

Mol	Chain	Res	Type
1	A	3	GLN
1	A	4	LEU
1	A	5	ILE
1	A	8	VAL
1	A	13	TRP
1	A	23	PHE
1	A	45	THR
1	A	53	ASP
1	A	90	LEU
1	A	92	LEU
1	A	93	GLU
1	A	94	ASN
1	A	101	SER
1	A	102	PHE
1	A	112	GLN
1	A	116	LEU
1	A	119	LEU

Continued on next page...

Continued from previous page...

Mol	Chain	Res	Type
1	A	122	HIS
1	A	128	SER
1	A	182	LEU
1	A	202	SER
1	A	228	ARG
1	A	233	ASN
1	A	246	LEU
1	A	302	THR
1	A	319	GLU
1	B	13	TRP
1	B	22	LYS
1	B	23	PHE
1	B	34	LEU
1	B	49	ILE
1	B	53	ASP
1	B	60	SER
1	B	90	LEU
1	B	111	TYR
1	B	112	GLN
1	B	116	LEU
1	B	119	LEU
1	B	122	HIS
1	B	144	ILE
1	B	178	LYS
1	B	210	VAL
1	B	227	HIS
1	B	246	LEU
1	B	255	THR
1	B	301	LYS
1	B	302	THR
1	B	306	THR

Some sidechains can be flipped to improve hydrogen bonding and reduce clashes. All (19) such sidechains are listed below:

Mol	Chain	Res	Type
1	A	3	GLN
1	A	10	HIS
1	A	24	GLN
1	A	126	HIS
1	A	157	ASN
1	A	191	ASN
1	A	192	ASN

Continued on next page...

Continued from previous page...

Mol	Chain	Res	Type
1	A	222	GLN
1	A	233	ASN
1	A	256	HIS
1	A	279	GLN
1	A	291	HIS
1	B	3	GLN
1	B	113	ASN
1	B	233	ASN
1	B	234	GLN
1	B	256	HIS
1	B	315	GLN
1	B	321	HIS

5.3.3 RNA ⓘ

There are no RNA chains in this entry.

5.4 Non-standard residues in protein, DNA, RNA chains ⓘ

There are no non-standard protein/DNA/RNA residues in this entry.

5.5 Carbohydrates ⓘ

There are no carbohydrates in this entry.

5.6 Ligand geometry ⓘ

21 ligands are modelled in this entry.

In the following table, the Counts columns list the number of bonds (or angles) for which Mogul statistics could be retrieved, the number of bonds (or angles) that are observed in the model and the number of bonds (or angles) that are defined in the chemical component dictionary. The Link column lists molecule types, if any, to which the group is linked. The Z score for a bond length (or angle) is the number of standard deviations the observed value is removed from the expected value. A bond length (or angle) with $|Z| > 2$ is considered an outlier worth inspection. RMSZ is the root-mean-square of all Z scores of the bond lengths (or angles).

Mol	Type	Chain	Res	Link	Bond lengths			Bond angles		
					Counts	RMSZ	$\# Z > 2$	Counts	RMSZ	$\# Z > 2$
2	SO4	A	401	-	4,4,4	0.46	0	6,6,6	0.65	0
2	SO4	A	402	-	4,4,4	1.16	0	6,6,6	0.70	0

Mol	Type	Chain	Res	Link	Bond lengths			Bond angles		
					Counts	RMSZ	# Z > 2	Counts	RMSZ	# Z > 2
2	SO4	A	403	-	4,4,4	0.82	0	6,6,6	0.49	0
2	SO4	A	404	-	4,4,4	1.34	0	6,6,6	0.42	0
2	SO4	A	405	-	4,4,4	0.84	0	6,6,6	0.69	0
2	SO4	A	406	-	4,4,4	0.51	0	6,6,6	0.37	0
2	SO4	A	407	-	4,4,4	1.08	0	6,6,6	0.22	0
3	MES	A	408	-	12,12,12	2.37	5 (41%)	16,16,16	3.71	11 (68%)
3	MES	A	409	-	12,12,12	1.99	5 (41%)	16,16,16	2.84	7 (43%)
3	MES	A	410	-	12,12,12	1.84	5 (41%)	16,16,16	2.90	9 (56%)
4	OVS	A	411	-	34,34,34	2.06	6 (17%)	47,47,47	2.69	17 (36%)
2	SO4	B	401	-	4,4,4	0.52	0	6,6,6	0.61	0
2	SO4	B	402	-	4,4,4	1.09	0	6,6,6	0.33	0
2	SO4	B	403	-	4,4,4	0.53	0	6,6,6	0.26	0
2	SO4	B	404	-	4,4,4	0.39	0	6,6,6	0.46	0
2	SO4	B	405	-	4,4,4	0.80	0	6,6,6	0.52	0
2	SO4	B	406	-	4,4,4	0.68	0	6,6,6	0.25	0
2	SO4	B	407	-	4,4,4	0.98	0	6,6,6	0.61	0
2	SO4	B	408	-	4,4,4	0.62	0	6,6,6	0.70	0
3	MES	B	409	-	12,12,12	2.05	4 (33%)	16,16,16	2.67	10 (62%)
4	OVS	B	410	-	34,34,34	2.83	16 (47%)	47,47,47	3.23	20 (42%)

In the following table, the Chirals column lists the number of chiral outliers, the number of chiral centers analysed, the number of these observed in the model and the number defined in the chemical component dictionary. Similar counts are reported in the Torsion and Rings columns. '-' means no outliers of that kind were identified.

Mol	Type	Chain	Res	Link	Chirals	Torsions	Rings
2	SO4	A	401	-	-	0/0/0/0	0/0/0/0
2	SO4	A	402	-	-	0/0/0/0	0/0/0/0
2	SO4	A	403	-	-	0/0/0/0	0/0/0/0
2	SO4	A	404	-	-	0/0/0/0	0/0/0/0
2	SO4	A	405	-	-	0/0/0/0	0/0/0/0
2	SO4	A	406	-	-	0/0/0/0	0/0/0/0
2	SO4	A	407	-	-	0/0/0/0	0/0/0/0
3	MES	A	408	-	-	0/6/14/14	0/1/1/1
3	MES	A	409	-	-	0/6/14/14	0/1/1/1
3	MES	A	410	-	-	0/6/14/14	1/1/1/1
4	OVS	A	411	-	-	0/27/47/47	0/0/2/2
2	SO4	B	401	-	-	0/0/0/0	0/0/0/0
2	SO4	B	402	-	-	0/0/0/0	0/0/0/0
2	SO4	B	403	-	-	0/0/0/0	0/0/0/0
2	SO4	B	404	-	-	0/0/0/0	0/0/0/0

Continued on next page...

Continued from previous page...

Mol	Type	Chain	Res	Link	Chirals	Torsions	Rings
2	SO4	B	405	-	-	0/0/0/0	0/0/0/0
2	SO4	B	406	-	-	0/0/0/0	0/0/0/0
2	SO4	B	407	-	-	0/0/0/0	0/0/0/0
2	SO4	B	408	-	-	0/0/0/0	0/0/0/0
3	MES	B	409	-	-	0/6/14/14	0/1/1/1
4	OVS	B	410	-	-	1/27/47/47	0/0/2/2

All (41) bond length outliers are listed below:

Mol	Chain	Res	Type	Atoms	Z	Observed(Å)	Ideal(Å)
4	B	410	OVS	C22-C23	7.41	1.63	1.51
4	B	410	OVS	C08-S07	5.81	1.88	1.81
4	B	410	OVS	C06-S07	5.48	1.86	1.74
4	A	411	OVS	C06-S07	5.33	1.86	1.74
4	A	411	OVS	C22-C23	5.14	1.59	1.51
3	A	408	MES	C8-S	-4.83	1.69	1.78
4	A	411	OVS	C11-N10	4.71	1.43	1.34
4	B	410	OVS	C11-N10	4.67	1.43	1.34
3	B	409	MES	C8-S	-4.26	1.70	1.78
3	A	408	MES	O1S-S	4.12	1.55	1.45
4	B	410	OVS	C04-C05	4.10	1.56	1.48
4	A	411	OVS	C06-C27	3.81	1.43	1.36
3	A	409	MES	O3S-S	3.63	1.53	1.45
4	A	411	OVS	C08-S07	3.43	1.85	1.81
4	B	410	OVS	C12-C11	3.23	1.58	1.51
4	B	410	OVS	C20-N21	3.21	1.40	1.33
3	B	409	MES	O3S-S	3.16	1.52	1.45
4	B	410	OVS	O26-C20	3.14	1.29	1.23
3	A	410	MES	C8-S	-3.11	1.72	1.78
3	A	408	MES	C3-C2	3.09	1.58	1.51
3	A	409	MES	C8-S	-3.08	1.72	1.78
3	A	409	MES	O1S-S	3.07	1.52	1.45
3	A	410	MES	O3S-S	3.07	1.52	1.45
4	B	410	OVS	C06-C27	3.01	1.41	1.36
4	B	410	OVS	C08-C09	2.84	1.61	1.53
3	B	409	MES	O2S-S	2.76	1.52	1.45
4	B	410	OVS	C27-C02	2.70	1.54	1.48
3	A	410	MES	O1S-S	2.67	1.51	1.45
4	B	410	OVS	C09-C20	2.61	1.60	1.52
4	B	410	OVS	C03-C04	2.46	1.44	1.40
4	B	410	OVS	C30-C04	2.34	1.43	1.39
3	A	408	MES	O2S-S	2.30	1.50	1.45

Continued on next page...

Continued from previous page...

Mol	Chain	Res	Type	Atoms	Z	Observed(Å)	Ideal(Å)
4	B	410	0VS	C33-C03	2.29	1.43	1.39
3	A	409	MES	C3-C2	2.24	1.56	1.51
4	A	411	0VS	C14-C15	2.24	1.61	1.53
3	B	409	MES	O1S-S	2.18	1.50	1.45
3	A	409	MES	O2S-S	2.18	1.50	1.45
3	A	408	MES	O3S-S	2.14	1.50	1.45
3	A	410	MES	O2S-S	2.10	1.50	1.45
3	A	410	MES	C5-C6	2.01	1.55	1.51
4	B	410	0VS	C09-N10	2.01	1.50	1.45

All (74) bond angle outliers are listed below:

Mol	Chain	Res	Type	Atoms	Z	Observed(°)	Ideal(°)
4	A	411	0VS	C27-C06-C05	-8.69	115.87	121.65
4	B	410	0VS	O19-C11-N10	-8.46	108.38	123.08
4	B	410	0VS	C06-C27-C02	8.26	125.43	120.31
4	B	410	0VS	C27-C06-C05	-7.97	116.35	121.65
4	A	411	0VS	C06-C27-C02	7.20	124.77	120.31
4	B	410	0VS	C12-C11-N10	6.61	128.40	115.83
3	A	408	MES	O1S-S-C8	6.45	126.23	106.36
3	A	408	MES	O1-C2-C3	6.21	118.74	111.34
3	A	408	MES	C5-N4-C3	6.16	121.97	109.75
4	B	410	0VS	C22-N21-C20	6.10	134.79	121.29
3	A	409	MES	O1-C2-C3	6.05	118.55	111.34
4	B	410	0VS	C08-S07-C06	5.69	122.90	104.71
3	A	410	MES	O1-C6-C5	5.68	118.11	111.34
4	A	411	0VS	O26-C20-N21	-5.62	111.63	123.05
4	A	411	0VS	C28-C27-C02	-5.59	106.55	116.33
3	A	409	MES	C5-N4-C3	5.59	120.83	109.75
4	A	411	0VS	C08-S07-C06	5.55	122.46	104.71
3	A	410	MES	C5-N4-C3	5.53	120.72	109.75
3	B	409	MES	C5-N4-C3	5.52	120.69	109.75
3	A	408	MES	C2-C3-N4	4.80	116.12	109.96
4	B	410	0VS	C20-C09-N10	4.79	124.74	111.28
4	B	410	0VS	O26-C20-N21	-4.31	114.30	123.05
3	A	408	MES	O3S-S-C8	-4.28	94.95	105.99
4	B	410	0VS	O01-C02-C27	4.00	125.33	120.20
3	B	409	MES	C7-N4-C5	3.72	121.39	111.66
3	A	410	MES	C7-C8-S	3.70	122.57	112.49
3	A	409	MES	O3S-S-C8	3.65	115.40	105.99
3	B	409	MES	O1-C2-C3	3.52	115.54	111.34
3	A	408	MES	O2S-S-O1S	-3.48	105.72	112.44

Continued on next page...

Continued from previous page...

Mol	Chain	Res	Type	Atoms	Z	Observed(°)	Ideal(°)
3	A	409	MES	O3S-S-O2S	-3.47	103.55	112.48
3	A	409	MES	C7-N4-C3	3.34	120.38	111.66
3	B	409	MES	C8-C7-N4	3.33	118.13	112.44
3	A	408	MES	O1-C6-C5	3.28	115.25	111.34
4	A	411	0VS	O26-C20-C09	-3.15	113.39	120.31
4	A	411	0VS	O17-C15-C14	-3.12	109.36	118.36
4	B	410	0VS	C13-C14-N18	3.10	117.72	110.14
3	B	409	MES	O3S-S-C8	3.08	113.95	105.99
4	A	411	0VS	C27-C06-S07	3.08	124.85	119.91
3	B	409	MES	O2S-S-O1S	-3.07	106.52	112.44
3	A	410	MES	C6-C5-N4	-3.06	106.03	109.96
4	B	410	0VS	C30-C04-C03	-3.05	115.80	119.27
4	A	411	0VS	C28-C27-C06	3.04	128.60	123.31
3	A	410	MES	O3S-S-C8	2.98	113.69	105.99
4	B	410	0VS	C27-C06-S07	2.98	124.69	119.91
4	B	410	0VS	C09-C20-N21	2.97	122.53	116.72
3	A	408	MES	C7-N4-C5	2.94	119.36	111.66
4	B	410	0VS	O01-C02-C03	-2.91	116.51	121.58
3	A	410	MES	C7-N4-C3	2.80	118.97	111.66
4	B	410	0VS	O17-C15-C14	-2.79	110.31	118.36
3	B	409	MES	C6-O1-C2	2.77	119.35	109.90
4	A	411	0VS	C12-C13-C14	-2.76	109.29	114.43
3	A	408	MES	C6-O1-C2	2.72	119.17	109.90
3	A	409	MES	C7-N4-C5	2.68	118.66	111.66
4	B	410	0VS	O24-C23-C22	2.66	122.65	112.98
3	A	410	MES	C7-N4-C5	2.66	118.60	111.66
4	B	410	0VS	O25-C23-C22	-2.59	111.83	122.52
3	A	410	MES	O3S-S-O1S	-2.47	106.14	112.48
4	A	411	0VS	C20-C09-N10	2.46	118.20	111.28
4	B	410	0VS	C33-C03-C04	2.46	122.07	119.27
3	A	408	MES	C8-C7-N4	-2.45	108.25	112.44
4	A	411	0VS	C08-C09-C20	-2.43	104.11	109.65
4	B	410	0VS	C08-C09-C20	2.41	115.14	109.65
3	B	409	MES	O1-C6-C5	2.31	114.09	111.34
3	A	410	MES	C2-C3-N4	2.30	112.92	109.96
4	A	411	0VS	C23-C22-N21	-2.29	107.34	112.83
4	B	410	0VS	O29-C05-C06	-2.29	117.22	120.79
3	B	409	MES	C7-C8-S	-2.25	106.37	112.49
4	A	411	0VS	C04-C03-C02	-2.23	118.18	120.70
3	A	408	MES	O3S-S-O2S	2.15	118.00	112.48
4	A	411	0VS	C22-N21-C20	2.11	125.96	121.29
4	A	411	0VS	O16-C15-C14	2.10	121.59	116.88

Continued on next page...

Continued from previous page...

Mol	Chain	Res	Type	Atoms	Z	Observed(°)	Ideal(°)
4	A	411	0VS	O29-C05-C04	-2.09	117.93	121.58
3	B	409	MES	C2-C3-N4	2.01	112.54	109.96
3	A	409	MES	O1-C6-C5	2.01	113.74	111.34

There are no chirality outliers.

All (1) torsion outliers are listed below:

Mol	Chain	Res	Type	Atoms
4	B	410	0VS	C27-C06-S07-C08

All (1) ring outliers are listed below:

Mol	Chain	Res	Type	Atoms
3	A	410	MES	C2-C3-C5-C6-N4-O1

5.7 Other polymers ⓘ

There are no such residues in this entry.

5.8 Polymer linkage issues

There are no chain breaks in this entry.

6 Fit of model and data ⓘ

6.1 Protein, DNA and RNA chains ⓘ

In the following table, the column labelled ‘#RSRZ > 2’ contains the number (and percentage) of RSRZ outliers, followed by percent RSRZ outliers for the chain as percentile scores relative to all X-ray entries and entries of similar resolution. The OWAB column contains the minimum, median, 95th percentile and maximum values of the occupancy-weighted average B-factor per residue. The column labelled ‘Q < 0.9’ lists the number of (and percentage) of residues with an average occupancy less than 0.9.

Mol	Chain	Analysed	<RSRZ>	#RSRZ>2	OWAB(Å ²)	Q<0.9
1	A	327/328 (99%)	0.16	21 (6%) 19 17	30, 47, 103, 142	0
1	B	327/328 (99%)	0.31	24 (7%) 15 13	33, 54, 126, 163	0
All	All	654/656 (99%)	0.24	45 (6%) 15 15	30, 51, 120, 163	0

All (45) RSRZ outliers are listed below:

Mol	Chain	Res	Type	RSRZ
1	B	19	THR	8.0
1	B	17	LYS	7.8
1	A	19	THR	7.0
1	B	21	GLY	6.9
1	A	15	ASP	6.5
1	B	26	SER	6.3
1	A	23	PHE	6.1
1	A	18	SER	6.0
1	B	16	THR	5.7
1	B	23	PHE	5.7
1	A	11	ASP	5.5
1	A	21	GLY	5.4
1	A	17	LYS	5.4
1	A	16	THR	5.3
1	B	27	ALA	5.2
1	B	24	GLN	5.1
1	B	18	SER	5.0
1	A	14	TYR	4.6
1	A	13	TRP	4.5
1	B	20	GLY	4.5
1	B	28	SER	4.5
1	B	13	TRP	4.3
1	A	12	THR	4.2
1	A	26	SER	4.0

Continued on next page...

Continued from previous page...

Mol	Chain	Res	Type	RSRZ
1	A	328	GLY	4.0
1	B	25	ARG	3.8
1	A	27	ALA	3.8
1	A	28	SER	3.5
1	B	12	THR	3.3
1	B	22	LYS	3.2
1	A	20	GLY	3.2
1	B	15	ASP	2.7
1	B	14	TYR	2.6
1	A	10	HIS	2.6
1	B	63[A]	CYS	2.5
1	A	22	LYS	2.5
1	B	5	ILE	2.5
1	B	11	ASP	2.4
1	B	328	GLY	2.4
1	B	34	LEU	2.3
1	A	24	GLN	2.3
1	B	29	ALA	2.3
1	A	63[A]	CYS	2.3
1	A	25	ARG	2.1
1	B	33	TRP	2.0

6.2 Non-standard residues in protein, DNA, RNA chains ⓘ

There are no non-standard protein/DNA/RNA residues in this entry.

6.3 Carbohydrates ⓘ

There are no carbohydrates in this entry.

6.4 Ligands ⓘ

In the following table, the Atoms column lists the number of modelled atoms in the group and the number defined in the chemical component dictionary. LLDF column lists the quality of electron density of the group with respect to its neighbouring residues in protein, DNA or RNA chains. The B-factors column lists the minimum, median, 95th percentile and maximum values of B factors of atoms in the group. The column labelled 'Q< 0.9' lists the number of atoms with occupancy less than 0.9.

Mol	Type	Chain	Res	Atoms	RSR	LLDF	B-factors(Å ²)	Q<0.9
3	MES	A	410	12/12	0.44	23.74	64,92,102,116	0

Continued on next page...

Continued from previous page...

Mol	Type	Chain	Res	Atoms	RSR	LLDF	B-factors(\AA^2)	Q<0.9
2	SO4	B	402	5/5	0.42	14.65	101,103,117,146	0
3	MES	B	409	12/12	0.42	13.44	68,87,98,119	0
2	SO4	A	402	5/5	0.33	12.42	68,85,89,124	0
3	MES	A	409	12/12	0.47	7.70	81,99,108,136	0
2	SO4	B	406	5/5	0.30	7.50	79,86,118,129	0
3	MES	A	408	12/12	0.27	7.32	53,72,83,93	0
2	SO4	B	405	5/5	0.23	6.57	80,85,113,120	0
2	SO4	A	407	5/5	0.22	5.46	77,84,111,123	0
2	SO4	B	408	5/5	0.29	2.89	98,104,123,137	0
2	SO4	A	405	5/5	0.27	2.57	77,105,109,131	0
2	SO4	B	407	5/5	0.17	2.48	90,90,107,128	0
4	OVS	B	410	33/33	0.22	0.71	71,87,102,108	0
4	OVS	A	411	33/33	0.20	0.61	52,95,112,119	0
2	SO4	B	404	5/5	0.16	0.16	77,97,99,115	0
2	SO4	B	403	5/5	0.15	0.00	65,71,92,93	0
2	SO4	A	404	5/5	0.14	-0.34	56,68,100,124	0
2	SO4	A	403	5/5	0.15	-0.44	74,79,98,118	0
2	SO4	A	406	5/5	0.10	-1.16	72,84,109,117	0
2	SO4	B	401	5/5	0.10	-2.33	51,66,80,80	0
2	SO4	A	401	5/5	0.09	-2.71	60,64,71,80	0

6.5 Other polymers ⓘ

There are no such residues in this entry.