



Full wwPDB X-ray Structure Validation Report

Feb 28, 2014 – 08:23 AM GMT

PDB ID : 1G4X
Title : ASPARTATE AMINOTRANSFERASE ACTIVE SITE MUTANT
N194A/R292L
Authors : Mizuguchi, H.
Deposited on : 2000-10-29
Resolution : 2.20 Å(reported)

This is a full wwPDB validation report for a publicly released PDB entry.
We welcome your comments at validation@mail.wwpdb.org
A user guide is available at <http://wwpdb.org/ValidationPDFNotes.html>

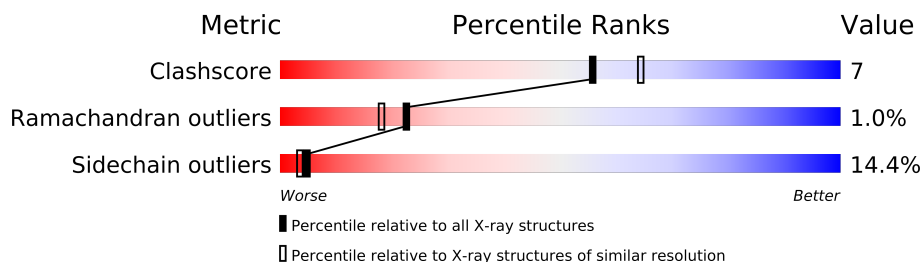
The following versions of software and data (see [references](#)) were used in the production of this report:

MolProbity : 4.02b-467
Mogul : 1.15 2013
Xtriage (Phenix) : **NOT EXECUTED**
EDS : **NOT EXECUTED**
Percentile statistics : 21963
Ideal geometry (proteins) : Engh & Huber (2001)
Ideal geometry (DNA, RNA) : Parkinson et. al. (1996)
Validation Pipeline (wwPDB-VP) : stable22683

1 Overall quality at a glance

The reported resolution of this entry is 2.20 Å.


Percentile scores (ranging between 0-100) for global validation metrics of the entry are shown in the following graphic. The table shows the number of entries on which the scores are based.



Metric	Whole archive (#Entries)	Similar resolution (#Entries, resolution range(Å))
Clashscore	79885	3751 (2.20-2.20)
Ramachandran outliers	78287	3681 (2.20-2.20)
Sidechain outliers	78261	3682 (2.20-2.20)

The table below summarises the geometric issues observed across the polymeric chains and their fit to the electron density. The red, orange, yellow and green segments on the lower bar indicate the fraction of residues that contain outliers for ≥ 3 , 2, 1 and 0 types of geometric quality criteria. The upper red bar (where present) indicates the fraction of residues that have poor fit to the electron density.

Note EDS was not executed.

Mol	Chain	Length	Quality of chain
1	A	396	

2 Entry composition i

There are 3 unique types of molecules in this entry. The entry contains 3228 atoms, of which 0 are hydrogen and 0 are deuterium.

In the tables below, the ZeroOcc column contains the number of atoms modelled with zero occupancy, the AltConf column contains the number of residues with at least one atom in alternate conformation and the Trace column contains the number of residues modelled with at most 2 atoms.

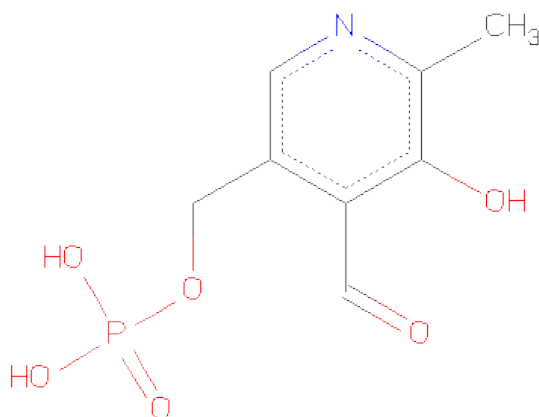
- Molecule 1 is a protein called ASPARTATE AMINOTRANSFERASE.

Mol	Chain	Residues	Atoms					ZeroOcc	AltConf	Trace
			Total	C	N	O	S			
1	A	396	3063	1935	532	583	13	3	0	0

There are 2 discrepancies between the modelled and reference sequences:

Chain	Residue	Modelled	Actual	Comment	Reference
A	194	ALA	ASN	ENGINEERED	UNP P00509
A	292	LEU	ARG	ENGINEERED	UNP P00509

- Molecule 2 is PYRIDOXAL-5'-PHOSPHATE (three-letter code: PLP) (formula: C₈H₁₀NO₆P).



Mol	Chain	Residues	Atoms					ZeroOcc	AltConf
			Total	C	N	O	P		
2	A	1	15	8	1	5	1	0	0

- Molecule 3 is water.

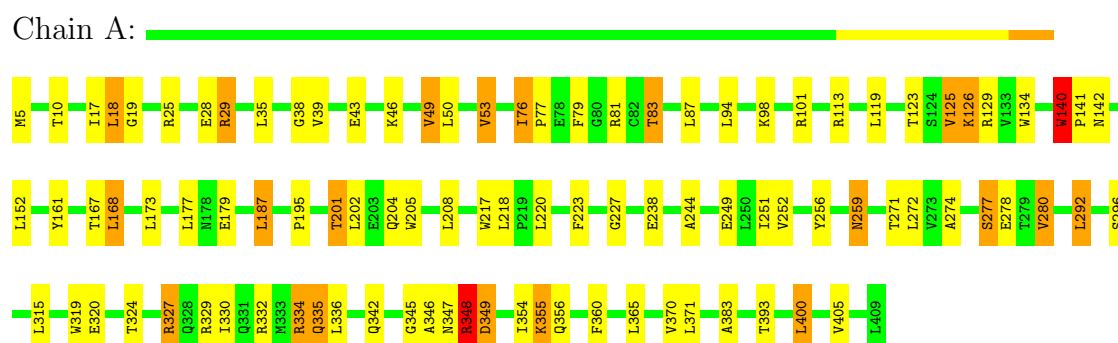
Mol	Chain	Residues	Atoms		ZeroOcc	AltConf
3	A	150	Total 150	O 150	0	0

3 Residue-property plots

These plots are drawn for all protein, RNA and DNA chains in the entry. The first graphic for a chain summarises the proportions of errors displayed in the second graphic. The second graphic shows the sequence view annotated by issues in geometry and electron density. Residues are color-coded according to the number of geometric quality criteria for which they contain at least one outlier: green = 0, yellow = 1, orange = 2 and red = 3 or more. A red dot above a residue indicates a poor fit to the electron density ($RSRZ > 2$). Stretches of 2 or more consecutive residues without any outlier are shown as a green connector. Residues present in the sample, but not in the model, are shown in grey.

Note EDS was not executed.

• Molecule 1: ASPARTATE AMINOTRANSFERASE



4 Data and refinement statistics

Xtriage (Phenix) and EDS were not executed - this section will therefore be incomplete.

Property	Value	Source
Space group	C 2 2 21	Depositor
Cell constants a, b, c, α , β , γ	155.04Å 88.75Å 80.07Å 90.00° 90.00° 90.00°	Depositor
Resolution (Å)	10.00 – 2.20	Depositor
% Data completeness (in resolution range)	(Not available) (10.00-2.20)	Depositor
R_{merge}	0.06	Depositor
R_{sym}	(Not available)	Depositor
Refinement program	X-PLOR 3.1	Depositor
R, R_{free}	0.229 , (Not available)	Depositor
Estimated twinning fraction	No twinning to report.	Xtriage
Total number of atoms	3228	wwPDB-VP
Average B, all atoms (Å ²)	28.0	wwPDB-VP

5 Model quality

5.1 Standard geometry

Bond lengths and bond angles in the following residue types are not validated in this section: PLP

The Z score for a bond length (or angle) is the number of standard deviations the observed value is removed from the expected value. A bond length (or angle) with $|Z| > 5$ is considered an outlier worth inspection. RMSZ is the root-mean-square of all Z scores of the bond lengths (or angles).

Mol	Chain	Bond lengths		Bond angles	
		RMSZ	# Z >5	RMSZ	# Z >5
1	A	0.69	0/3124	1.35	27/4233 (0.6%)

Chiral center outliers are detected by calculating the chiral volume of a chiral center and verifying if the center is modelled as a planar moiety or with the opposite hand. A planarity outlier is detected by checking planarity of atoms in a peptide group, atoms in a mainchain group or atoms of a sidechain that are expected to be planar.

Mol	Chain	#Chirality outliers	#Planarity outliers
1	A	0	2

There are no bond length outliers.

All (27) bond angle outliers are listed below:

Mol	Chain	Res	Type	Atoms	Z	Observed(°)	Ideal(°)
1	A	334	ARG	NE-CZ-NH2	10.04	125.32	120.30
1	A	334	ARG	NE-CZ-NH1	-9.44	115.58	120.30
1	A	347	ASN	CA-C-N	-9.16	97.04	117.20
1	A	18	LEU	CA-CB-CG	8.73	135.37	115.30
1	A	319	TRP	CD1-CG-CD2	8.56	113.15	106.30
1	A	134	TRP	CD1-CG-CD2	7.76	112.51	106.30
1	A	319	TRP	CE2-CD2-CG	-7.72	101.12	107.30
1	A	134	TRP	CE2-CD2-CG	-7.27	101.48	107.30
1	A	140	TRP	CD1-CG-CD2	7.25	112.10	106.30
1	A	205	TRP	CD1-CG-CD2	7.15	112.02	106.30
1	A	217	TRP	CD1-CG-CD2	7.10	111.98	106.30
1	A	140	TRP	CE2-CD2-CG	-7.00	101.70	107.30
1	A	217	TRP	CB-CG-CD1	-6.95	117.97	127.00
1	A	205	TRP	CE2-CD2-CG	-6.50	102.10	107.30
1	A	217	TRP	CE2-CD2-CG	-6.46	102.14	107.30
1	A	327	ARG	NE-CZ-NH2	6.30	123.45	120.30

Continued on next page...

Continued from previous page...

Mol	Chain	Res	Type	Atoms	Z	Observed(°)	Ideal(°)
1	A	187	LEU	CA-CB-CG	5.77	128.58	115.30
1	A	280	VAL	CA-CB-CG2	-5.77	102.24	110.90
1	A	349	ASP	CA-C-N	-5.58	104.92	117.20
1	A	18	LEU	CA-C-N	-5.52	105.16	116.20
1	A	217	TRP	CA-CB-CG	5.46	124.07	113.70
1	A	161	TYR	CB-CG-CD2	-5.38	117.77	121.00
1	A	348	ARG	CA-CB-CG	5.26	124.96	113.40
1	A	140	TRP	CG-CD2-CE3	5.25	138.62	133.90
1	A	319	TRP	CG-CD1-NE1	-5.22	104.88	110.10
1	A	329	ARG	NE-CZ-NH2	5.09	122.85	120.30
1	A	205	TRP	CG-CD2-CE3	5.05	138.45	133.90

There are no chirality outliers.

All (2) planarity outliers are listed below:

Mol	Chain	Res	Type	Group
1	A	140	TRP	Peptide
1	A	348	ARG	Peptide

5.2 Close contacts ⓘ

In the following table, the Non-H and H(model) columns list the number of non-hydrogen atoms and hydrogen atoms in the chain respectively. The H(added) column lists the number of hydrogens added by MolProbity. The Clashes column lists the number of clashes within the asymmetric unit, and the number in parentheses is this value normalized per 1000 atoms of the molecule in the chain. The Symm-Clashes column gives symmetry related clashes, in the same way as for the Clashes column.

Mol	Chain	Non-H	H(model)	H(added)	Clashes	Symm-Clashes
1	A	3063	0	3013	40	0
2	A	15	0	7	0	0
3	A	150	0	0	6	0
All	All	3228	0	3020	40	0

Clashscore is defined as the number of clashes calculated for the entry per 1000 atoms (including hydrogens) of the entry. The overall clashscore for this entry is 7.

All (40) close contacts within the same asymmetric unit are listed below.

Atom-1	Atom-2	Distance(Å)	Clash(Å)
1:A:334:ARG:NH1	1:A:356:GLN:HB2	2.08	0.69
1:A:76:ILE:HG21	3:A:447:HOH:O	1.93	0.67

Continued on next page...

Continued from previous page...

Atom-1	Atom-2	Distance(Å)	Clash(Å)
1:A:370:VAL:HG21	1:A:383:ALA:HA	1.84	0.59
1:A:168:LEU:HD21	1:A:173:LEU:HD12	1.87	0.57
1:A:252:VAL:HG13	1:A:271:THR:HB	1.87	0.57
1:A:249:GLU:HG2	1:A:274:ALA:HA	1.87	0.56
1:A:50:LEU:HB2	1:A:53:VAL:HG13	1.88	0.56
1:A:202:LEU:HD13	1:A:238:GLU:HG2	1.88	0.55
1:A:320:GLU:O	1:A:324:THR:HG23	2.09	0.53
1:A:123:THR:OG1	1:A:125:VAL:HG13	2.09	0.53
1:A:355:LYS:HB3	1:A:355:LYS:NZ	2.25	0.52
1:A:101:ARG:HG2	1:A:280:VAL:CG2	2.40	0.52
1:A:348:ARG:HH22	1:A:405:VAL:HG22	1.75	0.51
1:A:201:THR:HG22	1:A:204:GLN:H	1.75	0.51
1:A:43:GLU:HB2	3:A:540:HOH:O	2.10	0.51
1:A:274:ALA:N	3:A:477:HOH:O	2.44	0.51
1:A:292:LEU:HA	1:A:296:SER:HA	1.92	0.50
1:A:38:GLY:HA2	1:A:360:PHE:HZ	1.77	0.49
1:A:28:GLU:HB3	1:A:29:ARG:NH1	2.28	0.49
1:A:346:ALA:HB2	1:A:405:VAL:HG13	1.95	0.48
1:A:278:GLU:HB2	3:A:463:HOH:O	2.15	0.47
1:A:49:VAL:HG23	1:A:53:VAL:CG2	2.45	0.46
1:A:126:LYS:HE3	1:A:126:LYS:HA	1.97	0.46
1:A:274:ALA:HB3	3:A:477:HOH:O	2.16	0.46
1:A:227:GLY:O	1:A:327:ARG:HD3	2.16	0.45
1:A:335:GLN:HA	1:A:354:ILE:CD1	2.46	0.45
1:A:393:THR:HB	3:A:532:HOH:O	2.17	0.44
1:A:251:ILE:HG12	1:A:272:LEU:HD23	2.00	0.44
1:A:330:ILE:O	1:A:334:ARG:HG3	2.18	0.43
1:A:76:ILE:O	1:A:76:ILE:HG13	2.17	0.43
1:A:101:ARG:HG2	1:A:280:VAL:HG22	2.01	0.43
1:A:346:ALA:HB3	1:A:348:ARG:CZ	2.50	0.42
1:A:177:LEU:HD12	1:A:177:LEU:HA	1.87	0.42
1:A:277:SER:O	1:A:280:VAL:HG12	2.20	0.42
1:A:256:TYR:HA	1:A:259:ASN:ND2	2.35	0.42
1:A:76:ILE:HA	1:A:77:PRO:HD3	1.86	0.41
1:A:94:LEU:HD11	1:A:244:ALA:HB1	2.03	0.41
1:A:256:TYR:HA	1:A:259:ASN:HD21	1.86	0.40
1:A:79:PHE:O	1:A:83:THR:HG23	2.21	0.40
1:A:35:LEU:HD11	1:A:400:LEU:HD21	2.03	0.40

There are no symmetry-related clashes.

5.3 Torsion angles

5.3.1 Protein backbone ⓘ

In the following table, the Percentiles column shows the percent Ramachandran outliers of the chain as a percentile score with respect to all X-ray entries followed by that with respect to entries of similar resolution. The Analysed column shows the number of residues for which the backbone conformation was analysed, and the total number of residues.

Mol	Chain	Analysed	Favoured	Allowed	Outliers	Percentiles
1	A	394/396 (100%)	372 (94%)	18 (5%)	4 (1%)	22 18

All (4) Ramachandran outliers are listed below:

Mol	Chain	Res	Type
1	A	19	GLY
1	A	141	PRO
1	A	345	GLY
1	A	142	ASN

5.3.2 Protein sidechains ⓘ

In the following table, the Percentiles column shows the percent sidechain outliers of the chain as a percentile score with respect to all X-ray entries followed by that with respect to entries of similar resolution. The Analysed column shows the number of residues for which the sidechain conformation was analysed, and the total number of residues.

Mol	Chain	Analysed	Rotameric	Outliers	Percentiles
1	A	319/319 (100%)	273 (86%)	46 (14%)	5 3

All (46) residues with a non-rotameric sidechain are listed below:

Mol	Chain	Res	Type
1	A	5	MET
1	A	10	THR
1	A	17	ILE
1	A	18	LEU
1	A	25	ARG
1	A	29	ARG
1	A	39	VAL
1	A	46	LYS
1	A	49	VAL
1	A	53	VAL

Continued on next page...

Continued from previous page...

Mol	Chain	Res	Type
1	A	76	ILE
1	A	81	ARG
1	A	83	THR
1	A	87	LEU
1	A	98	LYS
1	A	113	ARG
1	A	119	LEU
1	A	125	VAL
1	A	126	LYS
1	A	129	ARG
1	A	140	TRP
1	A	152	LEU
1	A	167	THR
1	A	168	LEU
1	A	179	GLU
1	A	187	LEU
1	A	195	PRO
1	A	201	THR
1	A	208	LEU
1	A	218	LEU
1	A	220	LEU
1	A	223	PHE
1	A	259	ASN
1	A	277	SER
1	A	292	LEU
1	A	315	LEU
1	A	332	ARG
1	A	335	GLN
1	A	336	LEU
1	A	342	GLN
1	A	348	ARG
1	A	349	ASP
1	A	355	LYS
1	A	365	LEU
1	A	371	LEU
1	A	400	LEU

Some sidechains can be flipped to improve hydrogen bonding and reduce clashes. All (7) such sidechains are listed below:

Mol	Chain	Res	Type
1	A	166	HIS
1	A	178	ASN

Continued on next page...

Continued from previous page...

Mol	Chain	Res	Type
1	A	193	HIS
1	A	259	ASN
1	A	335	GLN
1	A	347	ASN
1	A	356	GLN

5.3.3 RNA ⓘ

There are no RNA chains in this entry.

5.4 Non-standard residues in protein, DNA, RNA chains ⓘ

There are no non-standard protein/DNA/RNA residues in this entry.

5.5 Carbohydrates ⓘ

There are no carbohydrates in this entry.

5.6 Ligand geometry ⓘ

1 ligand is modelled in this entry.

In the following table, the Counts columns list the number of bonds (or angles) for which Mogul statistics could be retrieved, the number of bonds (or angles) that are observed in the model and the number of bonds (or angles) that are defined in the chemical component dictionary. The Link column lists molecule types, if any, to which the group is linked. The Z score for a bond length (or angle) is the number of standard deviations the observed value is removed from the expected value. A bond length (or angle) with $|Z| > 2$ is considered an outlier worth inspection. RMSZ is the root-mean-square of all Z scores of the bond lengths (or angles).

Mol	Type	Chain	Res	Link	Bond lengths			Bond angles		
					Counts	RMSZ	$\# Z > 2$	Counts	RMSZ	$\# Z > 2$
2	PLP	A	413	1	14,15,16	1.30	2 (14%)	20,22,23	1.33	2 (10%)

In the following table, the Chirals column lists the number of chiral outliers, the number of chiral centers analysed, the number of these observed in the model and the number defined in the chemical component dictionary. Similar counts are reported in the Torsion and Rings columns. '-' means no outliers of that kind were identified.

Mol	Type	Chain	Res	Link	Chirals	Torsions	Rings
2	PLP	A	413	1	-	0/6/6/8	0/1/1/1

All (2) bond length outliers are listed below:

Mol	Chain	Res	Type	Atoms	Z	Observed(Å)	Ideal(Å)
2	A	413	PLP	C3-C2	-3.50	1.38	1.40
2	A	413	PLP	P-O3P	-2.04	1.47	1.54

All (2) bond angle outliers are listed below:

Mol	Chain	Res	Type	Atoms	Z	Observed(°)	Ideal(°)
2	A	413	PLP	O4P-C5A-C5	4.36	118.12	109.26
2	A	413	PLP	C5-C6-N1	-2.10	120.07	123.86

There are no chirality outliers.

There are no torsion outliers.

There are no ring outliers.

5.7 Other polymers ⓘ

There are no such residues in this entry.

5.8 Polymer linkage issues

There are no chain breaks in this entry.

6 Fit of model and data

6.1 Protein, DNA and RNA chains

EDS was not executed - this section will therefore be empty.

6.2 Non-standard residues in protein, DNA, RNA chains

EDS was not executed - this section will therefore be empty.

6.3 Carbohydrates

EDS was not executed - this section will therefore be empty.

6.4 Ligands

EDS was not executed - this section will therefore be empty.

6.5 Other polymers

EDS was not executed - this section will therefore be empty.