



Full wwPDB X-ray Structure Validation Report

Feb 28, 2014 – 06:49 PM GMT

PDB ID : 4G5R
Title : Structure of LGN GL4/Galphai3 complex
Authors : Jia, M.; Li, J.; Zhu, J.; Wen, W.; Zhang, M.; Wang, W.
Deposited on : 2012-07-18
Resolution : 3.48 Å(reported)

This is a full wwPDB validation report for a publicly released PDB entry.
We welcome your comments at validation@mail.wwpdb.org
A user guide is available at <http://wwpdb.org/ValidationPDFNotes.html>

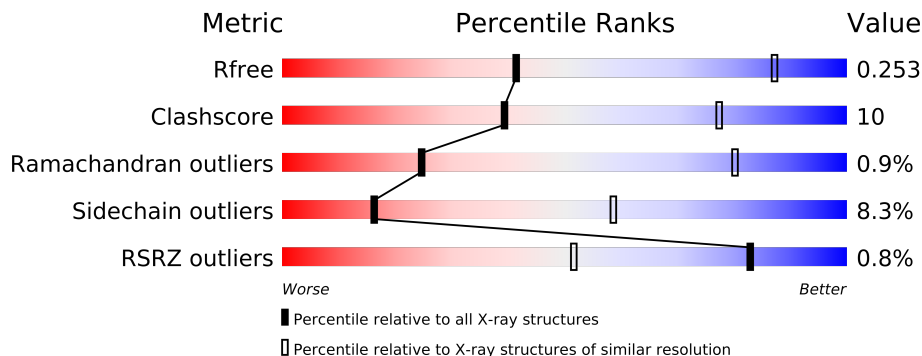
The following versions of software and data (see [references](#)) were used in the production of this report:

MolProbity : 4.02b-467
Mogul : 1.15 2013
Xtriage (Phenix) : dev-1323
EDS : stable22639
Percentile statistics : 21963
Refmac : 5.8.0049
CCP4 : 6.3.0 (Settle)
Ideal geometry (proteins) : Engh & Huber (2001)
Ideal geometry (DNA, RNA) : Parkinson et. al. (1996)
Validation Pipeline (wwPDB-VP) : stable22683

1 Overall quality at a glance

The reported resolution of this entry is 3.48 Å.

Percentile scores (ranging between 0-100) for global validation metrics of the entry are shown in the following graphic. The table shows the number of entries on which the scores are based.



Metric	Whole archive (#Entries)	Similar resolution (#Entries, resolution range(Å))
R_{free}	66092	1175 (3.66-3.30)
Clashscore	79885	1001 (3.62-3.34)
Ramachandran outliers	78287	1001 (3.64-3.32)
Sidechain outliers	78261	1002 (3.64-3.32)
RSRZ outliers	66119	1175 (3.66-3.30)

The table below summarises the geometric issues observed across the polymeric chains and their fit to the electron density. The red, orange, yellow and green segments on the lower bar indicate the fraction of residues that contain outliers for ≥ 3 , 2, 1 and 0 types of geometric quality criteria. The upper red bar (where present) indicates the fraction of residues that have poor fit to the electron density.

Mol	Chain	Length	Quality of chain
1	A	330	
1	B	330	
1	C	330	
1	D	330	
2	E	25	
2	F	25	
2	G	25	
2	Z	25	

The following table lists non-polymeric compounds that are outliers for geometric or electron-density-fit criteria:

Mol	Type	Chain	Res	Geometry	Electron density
5	CIT	B	402	-	X

2 Entry composition

There are 5 unique types of molecules in this entry. The entry contains 10601 atoms, of which 0 are hydrogen and 0 are deuterium.

In the tables below, the ZeroOcc column contains the number of atoms modelled with zero occupancy, the AltConf column contains the number of residues with at least one atom in alternate conformation and the Trace column contains the number of residues modelled with at most 2 atoms.

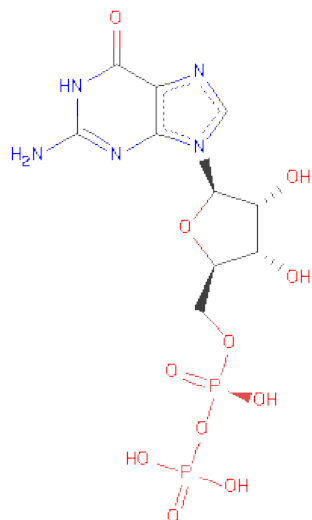
- Molecule 1 is a protein called Guanine nucleotide-binding protein G(k) subunit alpha.

Mol	Chain	Residues	Atoms					ZeroOcc	AltConf	Trace
1	A	319	Total	C	N	O	S	0	0	0
			2432	1547	398	472	15			
1	B	313	Total	C	N	O	S	0	0	0
			2412	1534	397	467	14			
1	C	317	Total	C	N	O	S	0	0	0
			2426	1541	403	467	15			
1	D	317	Total	C	N	O	S	0	0	0
			2426	1542	401	468	15			

- Molecule 2 is a protein called G-protein-signaling modulator 2.

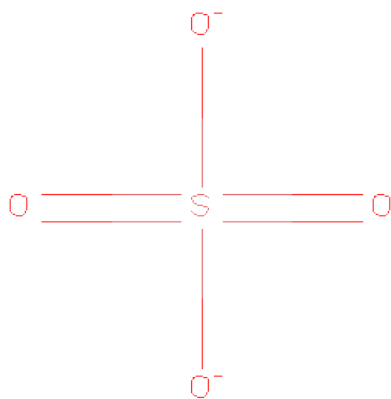
Mol	Chain	Residues	Atoms					ZeroOcc	AltConf	Trace
2	E	21	Total	C	N	O	S	0	0	0
			179	114	33	31	1			
2	F	22	Total	C	N	O	S	0	0	0
			184	117	34	32	1			
2	G	22	Total	C	N	O	S	0	0	0
			184	116	34	33	1			
2	Z	21	Total	C	N	O	S	0	0	0
			179	114	33	31	1			

- Molecule 3 is GUANOSINE-5'-DIPHOSPHATE (three-letter code: GDP) (formula: C₁₀H₁₅N₅O₁₁P₂).



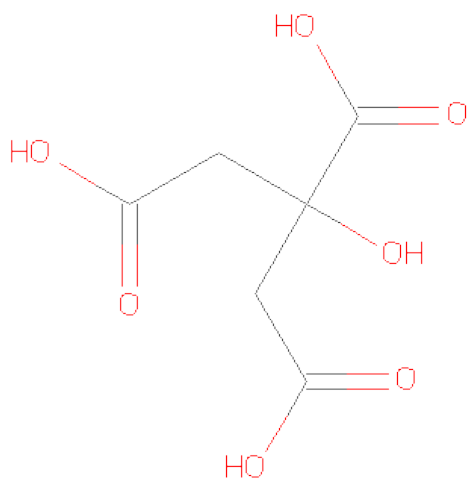
Mol	Chain	Residues	Atoms					ZeroOcc	AltConf
3	A	1	Total	C	N	O	P	0	0
			28	10	5	11	2		
3	B	1	Total	C	N	O	P	0	0
			28	10	5	11	2		
3	C	1	Total	C	N	O	P	0	0
			28	10	5	11	2		
3	D	1	Total	C	N	O	P	0	0
			28	10	5	11	2		

- Molecule 4 is SULFATE ION (three-letter code: SO4) (formula: O₄S).



Mol	Chain	Residues	Atoms			ZeroOcc	AltConf
4	A	1	Total	O	S	0	0
			5	4	1		
4	B	1	Total	O	S	0	0
			5	4	1		
4	C	1	Total	O	S	0	0
			5	4	1		

- Molecule 5 is CITRIC ACID (three-letter code: CIT) (formula: $C_6H_8O_7$).



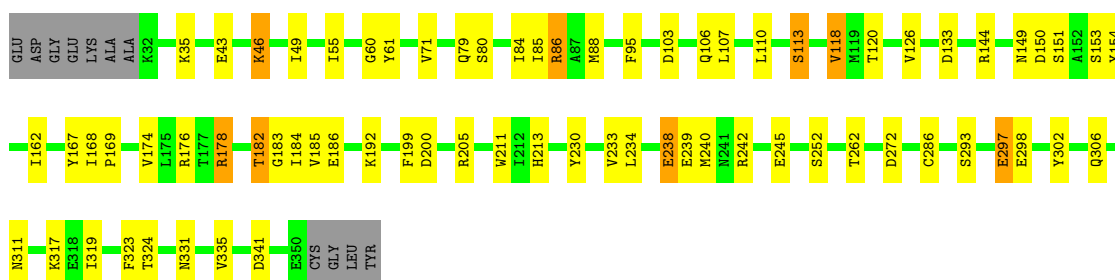
Mol	Chain	Residues	Atoms			ZeroOcc	AltConf
5	B	1	Total	C	O	0	0
			13	6	7		
5	B	1	Total	C	O	0	0
			13	6	7		
5	C	1	Total	C	O	0	0
			13	6	7		
5	C	1	Total	C	O	0	0
			13	6	7		

3 Residue-property plots

These plots are drawn for all protein, RNA and DNA chains in the entry. The first graphic for a chain summarises the proportions of errors displayed in the second graphic. The second graphic shows the sequence view annotated by issues in geometry and electron density. Residues are color-coded according to the number of geometric quality criteria for which they contain at least one outlier: green = 0, yellow = 1, orange = 2 and red = 3 or more. A red dot above a residue indicates a poor fit to the electron density ($RSRZ > 2$). Stretches of 2 or more consecutive residues without any outlier are shown as a green connector. Residues present in the sample, but not in the model, are shown in grey.

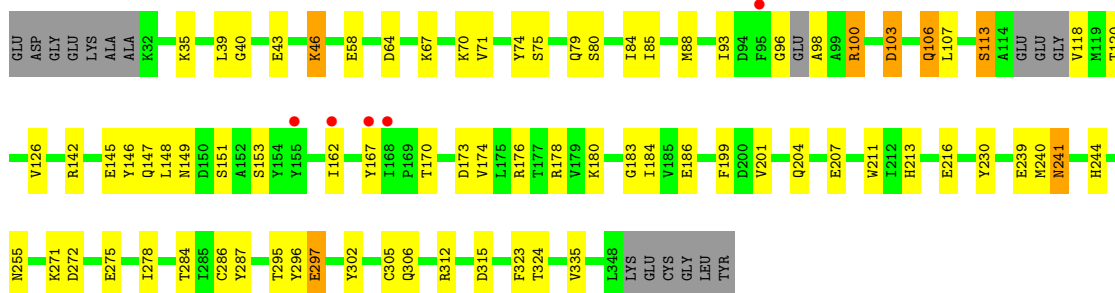
- Molecule 1: Guanine nucleotide-binding protein G(k) subunit alpha

Chain A:



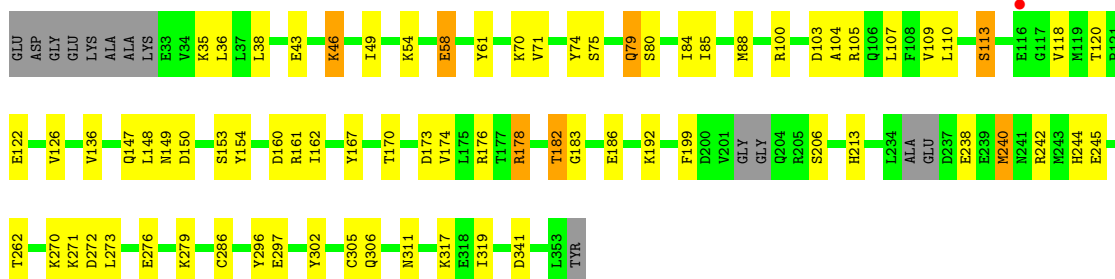
- Molecule 1: Guanine nucleotide-binding protein G(k) subunit alpha

Chain B:



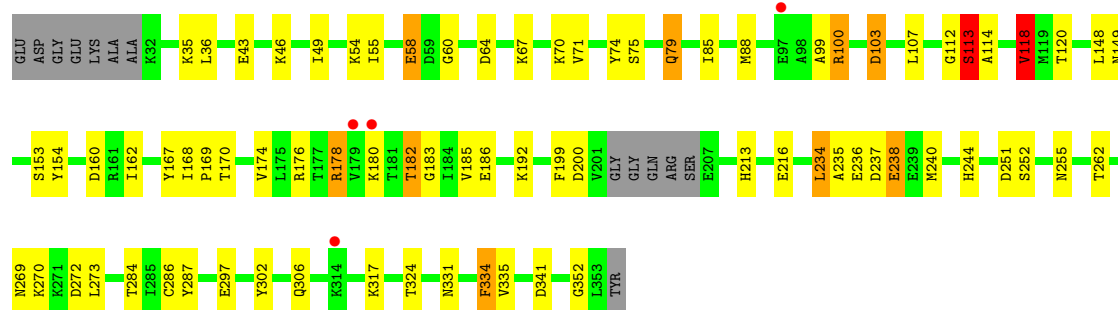
- Molecule 1: Guanine nucleotide-binding protein G(k) subunit alpha

Chain C:



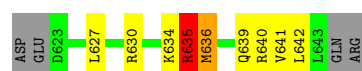
- Molecule 1: Guanine nucleotide-binding protein G(k) subunit alpha

Chain D: 



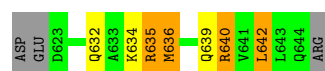
- Molecule 2: G-protein-signaling modulator 2

Chain E: 



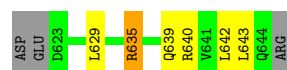
- Molecule 2: G-protein-signaling modulator 2

Chain F: 



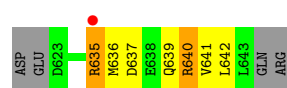
- Molecule 2: G-protein-signaling modulator 2

Chain G: 



- Molecule 2: G-protein-signaling modulator 2

Chain Z: 



4 Data and refinement statistics

Property	Value	Source
Space group	P 61 2 2	Depositor
Cell constants a, b, c, α , β , γ	209.55Å 209.55Å 237.21Å 90.00° 90.00° 120.00°	Depositor
Resolution (Å)	48.04 – 3.48 49.64 – 3.48	Depositor EDS
% Data completeness (in resolution range)	98.1 (48.04-3.48) 98.4 (49.64-3.48)	Depositor EDS
R_{merge}	0.11	Depositor
R_{sym}	(Not available)	Depositor
$\langle I/\sigma(I) \rangle$ ¹	2.79 (at 3.48Å)	Xtriage
Refinement program	PHENIX (phenix.refine: 1.8.1063)	Depositor
R, R_{free}	0.209 , 0.253 0.209 , 0.253	Depositor DCC
R_{free} test set	1962 reflections (5.01%)	DCC
Wilson B-factor (Å ²)	95.4	Xtriage
Anisotropy	0.051	Xtriage
Bulk solvent k_{sol} (e/Å ³), B_{sol} (Å ²)	0.30 , 65.0	EDS
Estimated twinning fraction	No twinning to report.	Xtriage
L-test for twinning	$\langle L \rangle = 0.50$, $\langle L^2 \rangle = 0.34$	Xtriage
Outliers	0 of 39267 reflections	Xtriage
F_o, F_c correlation	0.90	EDS
Total number of atoms	10601	wwPDB-VP
Average B, all atoms (Å ²)	103.0	wwPDB-VP

Xtriage's analysis on translational NCS is as follows: *The largest off-origin peak in the Patterson function is 1.69% of the height of the origin peak. No significant pseudotranslation is detected.*

¹Intensities estimated from amplitudes.

5 Model quality

5.1 Standard geometry

Bond lengths and bond angles in the following residue types are not validated in this section: GDP, SO4, CIT

The Z score for a bond length (or angle) is the number of standard deviations the observed value is removed from the expected value. A bond length (or angle) with $|Z| > 5$ is considered an outlier worth inspection. RMSZ is the root-mean-square of all Z scores of the bond lengths (or angles).

Mol	Chain	Bond lengths		Bond angles	
		RMSZ	# Z >5	RMSZ	# Z >5
1	A	0.28	0/2477	0.47	0/3364
1	B	0.28	0/2455	0.47	0/3326
1	C	0.28	0/2468	0.47	0/3346
1	D	0.28	0/2468	0.47	0/3345
2	E	0.30	0/180	0.63	0/238
2	F	0.31	0/185	0.62	0/245
2	G	0.27	0/185	0.50	0/246
2	Z	0.30	0/180	0.66	0/238
All	All	0.28	0/10598	0.48	0/14348

There are no bond length outliers.

There are no bond angle outliers.

There are no chirality outliers.

There are no planarity outliers.

5.2 Close contacts

In the following table, the Non-H and H(model) columns list the number of non-hydrogen atoms and hydrogen atoms in the chain respectively. The H(added) column lists the number of hydrogens added by MolProbity. The Clashes column lists the number of clashes within the asymmetric unit, and the number in parentheses is this value normalized per 1000 atoms of the molecule in the chain. The Symm-Clashes column gives symmetry related clashes, in the same way as for the Clashes column.

Mol	Chain	Non-H	H(model)	H(added)	Clashes	Symm-Clashes
1	A	2432	0	2260	45	0
1	B	2412	0	2266	54	0
1	C	2426	0	2271	47	0
1	D	2426	0	2282	48	0

Continued on next page...

Continued from previous page...

Mol	Chain	Non-H	H(model)	H(added)	Clashes	Symm-Clashes
2	E	179	0	187	7	0
2	F	184	0	189	10	0
2	G	184	0	184	6	0
2	Z	179	0	187	3	0
3	A	28	0	12	2	0
3	B	28	0	12	4	0
3	C	28	0	12	3	0
3	D	28	0	12	1	0
4	A	5	0	0	0	0
4	B	5	0	0	0	0
4	C	5	0	0	0	0
5	B	26	0	10	4	0
5	C	26	0	10	2	0
All	All	10601	0	9894	197	0

Clashscore is defined as the number of clashes calculated for the entry per 1000 atoms (including hydrogens) of the entry. The overall clashscore for this entry is 10.

All (197) close contacts within the same asymmetric unit are listed below.

Atom-1	Atom-2	Distance(Å)	Clash(Å)
1:B:183:GLY:HA2	1:B:204:GLN:HG3	1.54	0.89
1:B:43:GLU:OE2	2:F:640:ARG:NH1	2.14	0.80
1:D:103:ASP:N	1:D:103:ASP:OD1	2.19	0.75
1:A:43:GLU:OE1	2:E:640:ARG:NH1	2.19	0.74
1:C:271:LYS:NZ	5:C:402:CIT:O3	2.23	0.70
1:A:35:LYS:NZ	1:A:213:HIS:O	2.25	0.69
1:D:43:GLU:OE1	2:Z:640:ARG:NH1	2.25	0.69
1:B:103:ASP:O	1:B:107:LEU:N	2.27	0.68
1:C:43:GLU:OE1	2:G:640:ARG:NH1	2.27	0.67
1:B:147:GLN:O	2:F:639:GLN:NE2	2.27	0.67
1:C:192:LYS:NZ	1:C:341:ASP:OD1	2.28	0.67
1:B:70:LYS:HG2	1:B:74:TYR:HE2	1.61	0.65
1:B:103:ASP:N	1:B:103:ASP:OD2	2.23	0.65
1:C:147:GLN:O	2:G:639:GLN:NE2	2.29	0.65
1:D:234:LEU:HD22	1:D:238:GLU:HG3	1.79	0.65
1:A:151:SER:HG	3:A:401:GDP:HO3'	1.45	0.63
1:D:103:ASP:O	1:D:107:LEU:N	2.32	0.63
2:E:634:LYS:O	2:E:636:MET:N	2.29	0.63
1:D:262:THR:O	1:D:317:LYS:NZ	2.32	0.63
1:A:103:ASP:HB3	1:A:126:VAL:HG13	1.81	0.62
1:B:241:ASN:OD1	1:B:244:HIS:ND1	2.28	0.61
1:B:100:ARG:NH2	1:B:103:ASP:OD1	2.33	0.60

Continued on next page...

Continued from previous page...

Atom-1	Atom-2	Distance(Å)	Clash(Å)
1:A:178:ARG:NH2	2:E:639:GLN:O	2.34	0.60
1:C:161:ARG:NH1	1:C:173:ASP:OD2	2.31	0.60
1:C:100:ARG:NH2	1:C:103:ASP:OD2	2.34	0.60
1:B:170:THR:HG23	1:B:173:ASP:H	1.67	0.59
1:B:184:ILE:HD11	1:B:211:TRP:HA	1.83	0.59
1:C:296:TYR:HB3	5:C:403:CIT:O2	2.02	0.59
1:C:279:LYS:HD3	1:D:334:PHE:HE1	1.68	0.58
1:D:192:LYS:NZ	1:D:341:ASP:OD1	2.35	0.58
1:B:43:GLU:OE2	1:B:178:ARG:NH1	2.38	0.57
1:D:235:ALA:O	1:D:238:GLU:HG2	2.04	0.57
1:C:162:ILE:HG22	1:C:167:TYR:CZ	2.39	0.57
1:A:55:ILE:HA	1:A:60:GLY:HA2	1.84	0.57
1:D:54:LYS:HA	1:D:58:GLU:OE1	2.05	0.56
1:A:230:TYR:O	1:A:286:CYS:HB2	2.05	0.56
1:C:178:ARG:HH11	1:C:178:ARG:HB3	1.70	0.56
1:B:271:LYS:NZ	5:B:403:CIT:O3	2.35	0.56
1:A:184:ILE:HD11	1:A:211:TRP:HA	1.88	0.56
1:D:270:LYS:HB3	1:D:273:LEU:HD12	1.88	0.56
1:B:96:GLY:O	1:B:98:ALA:N	2.39	0.56
1:B:103:ASP:HB2	1:B:126:VAL:HG13	1.88	0.55
1:B:142:ARG:NH1	1:B:145:GLU:OE1	2.38	0.55
1:C:262:THR:O	1:C:317:LYS:NZ	2.40	0.55
1:C:311:ASN:HB2	1:C:319:ILE:HD11	1.87	0.55
1:C:70:LYS:HG2	1:C:74:TYR:HE2	1.72	0.55
1:B:162:ILE:HG22	1:B:167:TYR:CZ	2.42	0.55
1:D:251:ASP:OD1	1:D:255:ASN:ND2	2.40	0.55
1:B:201:VAL:O	1:B:211:TRP:NE1	2.39	0.55
1:B:272:ASP:N	1:B:272:ASP:OD1	2.40	0.55
1:C:276:GLU:HA	1:C:279:LYS:HE3	1.89	0.54
2:F:634:LYS:O	2:F:636:MET:N	2.40	0.54
1:B:178:ARG:NH2	2:F:639:GLN:O	2.41	0.54
1:D:112:GLY:C	1:D:114:ALA:H	2.10	0.54
1:A:43:GLU:OE1	1:A:178:ARG:NH1	2.39	0.54
1:C:272:ASP:N	1:C:272:ASP:OD1	2.42	0.53
1:B:230:TYR:O	1:B:286:CYS:HB2	2.09	0.53
1:B:186:GLU:HG3	1:B:199:PHE:CE2	2.43	0.53
1:A:86:ARG:HH11	1:A:86:ARG:HG3	1.74	0.53
1:B:75:SER:O	1:B:79:GLN:HG3	2.09	0.53
1:A:335:VAL:HG22	5:B:402:CIT:O3	2.08	0.53
1:C:182:THR:OG1	1:C:183:GLY:N	2.42	0.53
1:C:103:ASP:O	1:C:107:LEU:N	2.33	0.53
1:A:297:GLU:HG3	1:B:323:PHE:CD1	2.44	0.52

Continued on next page...

Continued from previous page...

Atom-1	Atom-2	Distance(Å)	Clash(Å)
1:A:162:ILE:HG22	1:A:167:TYR:CZ	2.43	0.52
1:B:93:ILE:HD11	1:B:142:ARG:NH2	2.24	0.52
1:B:151:SER:HB2	1:B:178:ARG:HD2	1.92	0.52
1:B:40:GLY:O	2:F:632:GLN:NE2	2.41	0.52
1:B:85:ILE:HA	1:B:88:MET:HG3	1.92	0.51
1:D:186:GLU:HG3	1:D:199:PHE:CE2	2.45	0.51
1:B:180:LYS:HB3	2:F:642:LEU:HD22	1.92	0.51
1:C:103:ASP:OD1	1:C:104:ALA:N	2.44	0.51
3:B:401:GDP:O3B	2:F:635:ARG:NH2	2.44	0.51
1:A:144:ARG:O	1:A:233:VAL:HG23	2.11	0.51
1:D:182:THR:OG1	1:D:183:GLY:N	2.43	0.51
1:A:79:GLN:HB2	2:E:639:GLN:HA	1.93	0.51
1:D:272:ASP:N	1:D:272:ASP:OD1	2.44	0.50
1:C:240:MET:HE3	1:C:245:GLU:HG3	1.93	0.50
1:D:112:GLY:O	1:D:114:ALA:N	2.42	0.50
3:C:401:GDP:O3B	2:G:635:ARG:NH2	2.44	0.50
1:D:70:LYS:HG2	1:D:74:TYR:HE2	1.77	0.50
1:D:213:HIS:ND1	1:D:216:GLU:OE1	2.38	0.50
1:A:297:GLU:HG3	1:B:323:PHE:CG	2.47	0.50
1:A:113:SER:O	1:A:113:SER:OG	2.29	0.50
1:A:176:ARG:NH1	3:A:401:GDP:O2'	2.42	0.50
1:B:296:TYR:HB3	5:B:402:CIT:O6	2.12	0.50
1:B:103:ASP:HA	1:B:106:GLN:HB3	1.93	0.49
1:C:38:LEU:HD23	1:C:46:LYS:HA	1.93	0.49
1:C:85:ILE:HA	1:C:88:MET:HG3	1.94	0.49
1:C:54:LYS:HA	1:C:58:GLU:OE1	2.11	0.49
1:A:272:ASP:OD1	1:A:272:ASP:N	2.43	0.49
1:D:75:SER:O	1:D:79:GLN:HG3	2.12	0.49
1:A:262:THR:O	1:A:317:LYS:NZ	2.45	0.49
1:C:75:SER:O	1:C:79:GLN:HG3	2.11	0.49
1:B:70:LYS:HG2	1:B:74:TYR:CE2	2.45	0.49
1:D:85:ILE:HA	1:D:88:MET:HG3	1.95	0.49
2:E:635:ARG:O	2:E:640:ARG:NH1	2.39	0.49
1:B:295:THR:HG22	5:B:402:CIT:O4	2.13	0.48
1:D:180:LYS:NZ	2:Z:637:ASP:HB3	2.28	0.48
1:D:148:LEU:HD12	1:D:149:ASN:H	1.78	0.48
1:A:182:THR:OG1	1:A:183:GLY:N	2.46	0.48
1:A:192:LYS:NZ	1:A:341:ASP:OD1	2.45	0.48
1:D:64:ASP:O	1:D:67:LYS:HB2	2.14	0.48
1:C:206:SER:HB3	2:G:629:LEU:HD11	1.96	0.48
1:C:244:HIS:HE1	1:C:286:CYS:O	1.96	0.48
1:A:85:ILE:HA	1:A:88:MET:HG3	1.96	0.48

Continued on next page...

Continued from previous page...

Atom-1	Atom-2	Distance(Å)	Clash(Å)
2:F:635:ARG:HG2	2:F:640:ARG:CZ	2.44	0.47
1:C:35:LYS:NZ	1:C:213:HIS:O	2.44	0.47
2:E:627:LEU:HD13	2:E:630:ARG:HH21	1.78	0.47
1:C:46:LYS:HE2	1:C:46:LYS:HB2	1.63	0.47
1:B:35:LYS:NZ	1:B:216:GLU:O	2.37	0.47
1:C:80:SER:O	1:C:84:ILE:HG13	2.14	0.47
1:A:185:VAL:HB	1:A:200:ASP:HB3	1.96	0.47
3:C:401:GDP:PB	2:G:635:ARG:HH21	2.38	0.47
1:B:324:THR:HG22	1:B:335:VAL:HG21	1.97	0.47
1:D:324:THR:HG22	1:D:335:VAL:HG21	1.98	0.46
1:A:311:ASN:HB2	1:A:319:ILE:HD11	1.96	0.46
1:D:162:ILE:HG22	1:D:167:TYR:CE1	2.50	0.46
1:D:154:TYR:CD2	1:D:176:ARG:HG3	2.51	0.46
1:D:55:ILE:HA	1:D:60:GLY:HA2	1.99	0.46
1:D:43:GLU:CD	1:D:178:ARG:HH12	2.19	0.45
1:D:235:ALA:O	1:D:237:ASP:N	2.49	0.45
1:A:149:ASN:HD21	1:A:151:SER:HB2	1.81	0.45
1:C:176:ARG:NH1	3:C:401:GDP:O2'	2.47	0.45
1:C:178:ARG:HB3	2:G:640:ARG:HG3	1.98	0.45
1:D:113:SER:O	1:D:118:VAL:HG13	2.16	0.45
1:D:79:GLN:HB2	2:Z:639:GLN:HA	1.98	0.45
1:A:110:LEU:O	1:A:113:SER:HB3	2.16	0.45
1:B:80:SER:O	1:B:84:ILE:HG13	2.16	0.45
1:C:110:LEU:O	1:C:113:SER:HB3	2.16	0.45
1:B:46:LYS:HE2	1:B:46:LYS:HB2	1.60	0.45
1:B:302:TYR:O	1:B:306:GLN:HG2	2.16	0.45
1:B:113:SER:OG	1:B:113:SER:O	2.32	0.44
1:B:176:ARG:NH1	3:B:401:GDP:O2'	2.47	0.44
2:F:635:ARG:HG2	2:F:640:ARG:NH1	2.32	0.44
1:C:154:TYR:CD2	1:C:176:ARG:HG3	2.53	0.44
1:A:86:ARG:NH1	1:A:86:ARG:HG3	2.32	0.44
1:C:113:SER:OG	1:C:113:SER:O	2.32	0.43
1:B:64:ASP:O	1:B:67:LYS:HB2	2.18	0.43
1:C:122:GLU:O	1:C:126:VAL:HG23	2.19	0.43
1:B:176:ARG:HH22	3:B:401:GDP:HN22	1.67	0.43
1:A:103:ASP:O	1:A:107:LEU:N	2.47	0.43
1:D:168:ILE:HA	1:D:169:PRO:HD3	1.86	0.43
2:E:627:LEU:HD13	2:E:630:ARG:NH2	2.34	0.43
1:D:185:VAL:HB	1:D:200:ASP:HB3	2.01	0.43
1:D:114:ALA:HA	1:D:118:VAL:HG13	2.00	0.43
1:D:99:ALA:HB3	1:D:100:ARG:HH21	1.84	0.43
1:A:297:GLU:OE2	1:B:296:TYR:OH	2.29	0.43

Continued on next page...

Continued from previous page...

Atom-1	Atom-2	Distance(Å)	Clash(Å)
1:D:170:THR:O	1:D:174:VAL:HG23	2.19	0.43
1:A:238:GLU:HB3	1:A:245:GLU:OE2	2.19	0.43
1:A:293:SER:OG	1:A:298:GLU:OE1	2.32	0.43
1:C:88:MET:SD	1:C:136:VAL:HG22	2.59	0.43
1:D:269:ASN:ND2	3:D:401:GDP:N7	2.66	0.43
1:C:302:TYR:O	1:C:306:GLN:HG2	2.18	0.42
1:D:35:LYS:NZ	1:D:216:GLU:O	2.35	0.42
1:A:149:ASN:OD1	1:A:150:ASP:N	2.52	0.42
1:C:162:ILE:HG22	1:C:167:TYR:CE1	2.55	0.42
1:B:170:THR:O	1:B:174:VAL:HG23	2.20	0.42
1:A:186:GLU:HG3	1:A:199:PHE:CE2	2.54	0.42
1:D:113:SER:OG	1:D:113:SER:O	2.37	0.42
1:A:154:TYR:CD2	1:A:176:ARG:HG3	2.54	0.42
1:D:334:PHE:C	1:D:334:PHE:CD2	2.93	0.42
1:C:70:LYS:HG2	1:C:74:TYR:CE2	2.52	0.42
1:C:170:THR:O	1:C:174:VAL:HG23	2.19	0.42
1:D:302:TYR:O	1:D:306:GLN:HG2	2.20	0.42
1:D:35:LYS:NZ	1:D:213:HIS:O	2.51	0.42
1:C:186:GLU:HG3	1:C:199:PHE:CE2	2.55	0.42
1:C:161:ARG:NH2	1:C:173:ASP:OD1	2.53	0.41
1:D:244:HIS:HE1	1:D:286:CYS:O	2.03	0.41
1:C:279:LYS:HD3	1:D:334:PHE:CE1	2.52	0.41
1:D:334:PHE:C	1:D:334:PHE:HD2	2.23	0.41
1:B:284:THR:HA	1:B:287:TYR:O	2.19	0.41
1:A:80:SER:O	1:A:84:ILE:HG13	2.20	0.41
1:B:93:ILE:HD11	1:B:142:ARG:HH21	1.84	0.41
1:D:100:ARG:HD2	1:D:100:ARG:N	2.36	0.41
1:D:284:THR:HA	1:D:287:TYR:O	2.21	0.41
1:A:323:PHE:CD1	1:B:297:GLU:HG3	2.56	0.41
1:B:39:LEU:HA	2:F:632:GLN:HE22	1.85	0.41
1:C:148:LEU:HD12	1:C:149:ASN:H	1.84	0.41
1:C:149:ASN:OD1	1:C:150:ASP:N	2.53	0.41
1:B:176:ARG:HH22	3:B:401:GDP:N2	2.18	0.41
1:A:297:GLU:HG2	1:A:297:GLU:H	1.48	0.41
1:A:324:THR:HG22	1:A:335:VAL:HG21	2.03	0.41
1:C:270:LYS:HB3	1:C:273:LEU:HD12	2.03	0.41
1:C:105:ARG:O	1:C:109:VAL:HG23	2.20	0.41
1:A:95:PHE:HB3	1:A:133:ASP:OD2	2.19	0.41
1:A:168:ILE:HA	1:A:169:PRO:HD3	1.87	0.41
1:A:46:LYS:HB2	1:A:46:LYS:HE2	1.61	0.41
1:A:61:TYR:CD1	1:A:174:VAL:HG11	2.56	0.41
1:C:61:TYR:CD1	1:C:174:VAL:HG11	2.57	0.40

Continued on next page...

Continued from previous page...

Atom-1	Atom-2	Distance(Å)	Clash(Å)
1:A:302:TYR:O	1:A:306:GLN:HG2	2.21	0.40
1:B:255:ASN:ND2	1:B:312:ARG:HG3	2.37	0.40
1:B:213:HIS:ND1	1:B:216:GLU:OE1	2.40	0.40
1:B:146:TYR:CE2	1:B:148:LEU:HB2	2.56	0.40
1:D:162:ILE:HG22	1:D:167:TYR:CZ	2.57	0.40
1:A:323:PHE:CE1	1:B:297:GLU:HG3	2.56	0.40
1:B:275:GLU:O	1:B:278:ILE:HG22	2.22	0.40

There are no symmetry-related clashes.

5.3 Torsion angles

5.3.1 Protein backbone ⓘ

In the following table, the Percentiles column shows the percent Ramachandran outliers of the chain as a percentile score with respect to all X-ray entries followed by that with respect to entries of similar resolution. The Analysed column shows the number of residues for which the backbone conformation was analysed, and the total number of residues.

Mol	Chain	Analysed	Favoured	Allowed	Outliers	Percentiles	
1	A	317/330 (96%)	305 (96%)	10 (3%)	2 (1%)	33	85
1	B	307/330 (93%)	295 (96%)	12 (4%)	0	100	100
1	C	311/330 (94%)	298 (96%)	13 (4%)	0	100	100
1	D	313/330 (95%)	298 (95%)	11 (4%)	4 (1%)	18	72
2	E	19/25 (76%)	17 (90%)	0	2 (10%)	1	13
2	F	20/25 (80%)	17 (85%)	1 (5%)	2 (10%)	1	14
2	G	20/25 (80%)	18 (90%)	2 (10%)	0	100	100
2	Z	19/25 (76%)	17 (90%)	0	2 (10%)	1	13
All	All	1326/1420 (93%)	1265 (95%)	49 (4%)	12 (1%)	25	80

All (12) Ramachandran outliers are listed below:

Mol	Chain	Res	Type
1	A	118	VAL
2	E	635	ARG
2	F	635	ARG
2	Z	635	ARG
1	A	205	ARG

Continued on next page...

Continued from previous page...

Mol	Chain	Res	Type
1	D	113	SER
1	D	236	GLU
2	F	636	MET
2	Z	636	MET
1	D	352	GLY
2	E	636	MET
1	D	118	VAL

5.3.2 Protein sidechains ⓘ

In the following table, the Percentiles column shows the percent sidechain outliers of the chain as a percentile score with respect to all X-ray entries followed by that with respect to entries of similar resolution. The Analysed column shows the number of residues for which the sidechain conformation was analysed, and the total number of residues.

Mol	Chain	Analysed	Rotameric	Outliers	Percentiles	
1	A	246/290 (85%)	227 (92%)	19 (8%)	18	63
1	B	248/290 (86%)	230 (93%)	18 (7%)	20	66
1	C	247/290 (85%)	229 (93%)	18 (7%)	20	66
1	D	248/290 (86%)	226 (91%)	22 (9%)	14	55
2	E	20/24 (83%)	17 (85%)	3 (15%)	4	25
2	F	20/24 (83%)	18 (90%)	2 (10%)	11	48
2	G	20/24 (83%)	17 (85%)	3 (15%)	4	25
2	Z	20/24 (83%)	16 (80%)	4 (20%)	2	10
All	All	1069/1256 (85%)	980 (92%)	89 (8%)	16	58

All (89) residues with a non-rotameric sidechain are listed below:

Mol	Chain	Res	Type
1	A	46	LYS
1	A	49	ILE
1	A	71	VAL
1	A	86	ARG
1	A	106	GLN
1	A	113	SER
1	A	118	VAL
1	A	120	THR
1	A	153	SER
1	A	178	ARG

Continued on next page...

Continued from previous page...

Mol	Chain	Res	Type
1	A	182	THR
1	A	234	LEU
1	A	238	GLU
1	A	239	GLU
1	A	240	MET
1	A	242	ARG
1	A	252	SER
1	A	297	GLU
1	A	331	ASN
1	B	46	LYS
1	B	58	GLU
1	B	71	VAL
1	B	100	ARG
1	B	103	ASP
1	B	106	GLN
1	B	113	SER
1	B	118	VAL
1	B	120	THR
1	B	149	ASN
1	B	153	SER
1	B	207	GLU
1	B	239	GLU
1	B	240	MET
1	B	241	ASN
1	B	297	GLU
1	B	305	CYS
1	B	315	ASP
1	C	36	LEU
1	C	46	LYS
1	C	49	ILE
1	C	58	GLU
1	C	71	VAL
1	C	79	GLN
1	C	113	SER
1	C	118	VAL
1	C	120	THR
1	C	153	SER
1	C	160	ASP
1	C	178	ARG
1	C	182	THR
1	C	238	GLU
1	C	240	MET

Continued on next page...

Continued from previous page...

Mol	Chain	Res	Type
1	C	242	ARG
1	C	297	GLU
1	C	305	CYS
1	D	36	LEU
1	D	46	LYS
1	D	49	ILE
1	D	58	GLU
1	D	71	VAL
1	D	79	GLN
1	D	100	ARG
1	D	103	ASP
1	D	113	SER
1	D	118	VAL
1	D	120	THR
1	D	153	SER
1	D	160	ASP
1	D	178	ARG
1	D	182	THR
1	D	234	LEU
1	D	238	GLU
1	D	240	MET
1	D	252	SER
1	D	297	GLU
1	D	331	ASN
1	D	334	PHE
2	E	635	ARG
2	E	641	VAL
2	E	642	LEU
2	F	640	ARG
2	F	642	LEU
2	G	635	ARG
2	G	642	LEU
2	G	643	LEU
2	Z	635	ARG
2	Z	640	ARG
2	Z	641	VAL
2	Z	642	LEU

Some sidechains can be flipped to improve hydrogen bonding and reduce clashes. All (2) such sidechains are listed below:

Mol	Chain	Res	Type
1	A	79	GLN

Continued on next page...

Continued from previous page...

Mol	Chain	Res	Type
1	D	255	ASN

5.3.3 RNA ⓘ

There are no RNA chains in this entry.

5.4 Non-standard residues in protein, DNA, RNA chains ⓘ

There are no non-standard protein/DNA/RNA residues in this entry.

5.5 Carbohydrates ⓘ

There are no carbohydrates in this entry.

5.6 Ligand geometry ⓘ

11 ligands are modelled in this entry.

In the following table, the Counts columns list the number of bonds (or angles) for which Mogul statistics could be retrieved, the number of bonds (or angles) that are observed in the model and the number of bonds (or angles) that are defined in the chemical component dictionary. The Link column lists molecule types, if any, to which the group is linked. The Z score for a bond length (or angle) is the number of standard deviations the observed value is removed from the expected value. A bond length (or angle) with $|Z| > 2$ is considered an outlier worth inspection. RMSZ is the root-mean-square of all Z scores of the bond lengths (or angles).

Mol	Type	Chain	Res	Link	Bond lengths			Bond angles		
					Counts	RMSZ	# $ Z > 2$	Counts	RMSZ	# $ Z > 2$
3	GDP	A	401	-	30,30,30	1.39	4 (13%)	44,47,47	3.35	9 (20%)
4	SO4	A	402	-	4,4,4	0.20	0	6,6,6	0.07	0
3	GDP	B	401	-	30,30,30	1.40	5 (16%)	44,47,47	2.99	8 (18%)
5	CIT	B	402	-	12,12,12	0.96	0	17,17,17	1.55	1 (5%)
5	CIT	B	403	-	12,12,12	0.91	0	17,17,17	1.65	1 (5%)
4	SO4	B	404	-	4,4,4	0.21	0	6,6,6	0.09	0
3	GDP	C	401	-	30,30,30	1.40	5 (16%)	44,47,47	2.41	8 (18%)
5	CIT	C	402	-	12,12,12	0.92	0	17,17,17	1.59	1 (5%)
5	CIT	C	403	-	12,12,12	1.02	0	17,17,17	1.86	3 (17%)
4	SO4	C	404	-	4,4,4	0.21	0	6,6,6	0.06	0
3	GDP	D	401	-	30,30,30	1.38	4 (13%)	44,47,47	2.89	9 (20%)

In the following table, the Chirals column lists the number of chiral outliers, the number of chiral centers analysed, the number of these observed in the model and the number defined in the chemical component dictionary. Similar counts are reported in the Torsion and Rings columns. '-' means no outliers of that kind were identified.

Mol	Type	Chain	Res	Link	Chirals	Torsions	Rings
3	GDP	A	401	-	-	0/16/32/32	0/1/3/3
4	SO4	A	402	-	-	0/0/0/0	0/0/0/0
3	GDP	B	401	-	-	0/16/32/32	0/1/3/3
5	CIT	B	402	-	-	0/16/16/16	0/0/0/0
5	CIT	B	403	-	-	0/16/16/16	0/0/0/0
4	SO4	B	404	-	-	0/0/0/0	0/0/0/0
3	GDP	C	401	-	-	0/16/32/32	0/1/3/3
5	CIT	C	402	-	-	0/16/16/16	0/0/0/0
5	CIT	C	403	-	-	0/16/16/16	0/0/0/0
4	SO4	C	404	-	-	0/0/0/0	0/0/0/0
3	GDP	D	401	-	-	0/16/32/32	0/1/3/3

All (18) bond length outliers are listed below:

Mol	Chain	Res	Type	Atoms	Z	Observed(Å)	Ideal(Å)
3	A	401	GDP	C6-C5	4.35	1.48	1.41
3	B	401	GDP	C6-C5	4.32	1.48	1.41
3	C	401	GDP	C6-C5	4.31	1.48	1.41
3	D	401	GDP	C6-C5	4.17	1.48	1.41
3	C	401	GDP	C5-C4	3.02	1.47	1.40
3	B	401	GDP	C5-C4	3.00	1.47	1.40
3	A	401	GDP	C4-N9	-2.92	1.33	1.37
3	D	401	GDP	C5-C4	2.91	1.47	1.40
3	D	401	GDP	C4-N9	-2.85	1.33	1.37
3	A	401	GDP	C5-C4	2.84	1.46	1.40
3	B	401	GDP	C4-N9	-2.68	1.33	1.37
3	C	401	GDP	C4-N9	-2.51	1.34	1.37
3	C	401	GDP	C2-N3	2.35	1.36	1.33
3	B	401	GDP	C2-N2	2.31	1.36	1.32
3	A	401	GDP	C2-N2	2.21	1.35	1.32
3	B	401	GDP	C2-N3	2.19	1.36	1.33
3	D	401	GDP	C2-N2	2.18	1.35	1.32
3	C	401	GDP	C2-N2	2.17	1.35	1.32

All (40) bond angle outliers are listed below:

Mol	Chain	Res	Type	Atoms	Z	Observed(°)	Ideal(°)
3	A	401	GDP	C6-C5-N7	18.37	136.61	134.14

Continued on next page...

Continued from previous page...

Mol	Chain	Res	Type	Atoms	Z	Observed(°)	Ideal(°)
3	B	401	GDP	C6-C5-N7	15.56	136.24	134.14
3	D	401	GDP	C6-C5-N7	15.16	136.18	134.14
3	C	401	GDP	C6-C5-N7	10.52	135.56	134.14
3	C	401	GDP	N3-C4-N9	5.93	135.61	126.91
3	C	401	GDP	C5-C4-N3	-5.37	118.16	125.94
3	D	401	GDP	N3-C4-N9	5.27	134.63	126.91
3	B	401	GDP	N3-C4-N9	5.20	134.54	126.91
3	A	401	GDP	N3-C4-N9	5.19	134.52	126.91
5	C	403	CIT	O6-C6-C3	5.11	120.33	112.89
3	B	401	GDP	O4'-C1'-N9	5.05	113.14	108.44
3	B	401	GDP	C5-C4-N3	-4.93	118.80	125.94
3	D	401	GDP	C5-C4-N3	-4.92	118.81	125.94
5	B	403	CIT	O6-C6-C3	4.88	119.98	112.89
3	A	401	GDP	C5-C4-N3	-4.81	118.98	125.94
5	C	402	CIT	O6-C6-C3	4.80	119.87	112.89
3	A	401	GDP	O4'-C1'-N9	4.77	112.88	108.44
5	B	402	CIT	O6-C6-C3	4.18	118.97	112.89
3	A	401	GDP	C2-N3-C4	4.14	120.91	115.09
3	C	401	GDP	C2-N3-C4	4.11	120.87	115.09
3	D	401	GDP	C2-N3-C4	4.00	120.71	115.09
3	B	401	GDP	C2-N3-C4	3.97	120.67	115.09
3	D	401	GDP	PA-O3A-PB	-3.77	120.62	131.68
3	A	401	GDP	PA-O3A-PB	-3.74	120.71	131.68
3	C	401	GDP	PA-O3A-PB	-3.74	120.72	131.68
3	A	401	GDP	C4-C5-N7	-3.71	106.35	109.52
5	C	403	CIT	C3-C2-C1	-3.69	104.82	113.77
3	B	401	GDP	C4-C5-N7	-3.65	106.40	109.52
3	D	401	GDP	C4-C5-N7	-3.51	106.51	109.52
3	B	401	GDP	PA-O3A-PB	-3.44	121.59	131.68
3	C	401	GDP	C4-C5-N7	-3.38	106.63	109.52
3	C	401	GDP	C3'-C2'-C1'	3.07	105.72	100.91
3	D	401	GDP	O4'-C1'-N9	2.86	111.10	108.44
3	A	401	GDP	C8-N9-C4	2.60	108.88	106.90
3	D	401	GDP	C3'-C2'-C1'	2.43	104.71	100.91
3	B	401	GDP	C3'-C2'-C1'	2.42	104.69	100.91
3	D	401	GDP	C8-N9-C4	2.12	108.52	106.90
3	C	401	GDP	C8-N9-C4	2.11	108.51	106.90
5	C	403	CIT	O4-C5-O3	-2.06	118.07	123.30
3	A	401	GDP	C1'-N9-C4	-2.00	123.18	126.64

There are no chirality outliers.

There are no torsion outliers.

There are no ring outliers.

5.7 Other polymers ⓘ

There are no such residues in this entry.

5.8 Polymer linkage issues

There are no chain breaks in this entry.

6 Fit of model and data ⓘ

6.1 Protein, DNA and RNA chains ⓘ

In the following table, the column labelled ‘#RSRZ > 2’ contains the number (and percentage) of RSRZ outliers, followed by percent RSRZ outliers for the chain as percentile scores relative to all X-ray entries and entries of similar resolution. The OWAB column contains the minimum, median, 95th percentile and maximum values of the occupancy-weighted average B-factor per residue. The column labelled ‘Q < 0.9’ lists the number of (and percentage) of residues with an average occupancy less than 0.9.

Mol	Chain	Analysed	<RSRZ>	#RSRZ > 2	OWAB(Å ²)	Q < 0.9
1	A	319/330 (96%)	-0.02	0 100 100	60, 97, 142, 167	0
1	B	313/330 (94%)	0.07	5 (1%) 68 34	55, 99, 157, 178	0
1	C	317/330 (96%)	0.04	1 (0%) 91 75	50, 100, 169, 191	0
1	D	317/330 (96%)	0.05	4 (1%) 74 39	57, 99, 151, 166	0
2	E	21/25 (84%)	0.06	0 100 100	82, 102, 137, 144	0
2	F	22/25 (88%)	0.06	0 100 100	80, 96, 122, 144	0
2	G	22/25 (88%)	0.15	0 100 100	81, 100, 136, 152	0
2	Z	21/25 (84%)	0.38	1 (4%) 29 12	97, 125, 153, 163	0
All	All	1352/1420 (95%)	0.04	11 (0%) 83 51	50, 100, 154, 191	0

All (11) RSRZ outliers are listed below:

Mol	Chain	Res	Type	RSRZ
1	D	180	LYS	2.4
1	B	162	ILE	2.4
1	B	155	TYR	2.4
1	C	116	GLU	2.4
1	D	97	GLU	2.2
1	B	95	PHE	2.2
1	D	314	LYS	2.2
1	D	179	VAL	2.1
1	B	168	ILE	2.1
2	Z	635	ARG	2.0
1	B	167	TYR	2.0

6.2 Non-standard residues in protein, DNA, RNA chains ⓘ

There are no non-standard protein/DNA/RNA residues in this entry.

6.3 Carbohydrates ⓘ

There are no carbohydrates in this entry.

6.4 Ligands ⓘ

In the following table, the Atoms column lists the number of modelled atoms in the group and the number defined in the chemical component dictionary. LLDF column lists the quality of electron density of the group with respect to its neighbouring residues in protein, DNA or RNA chains. The B-factors column lists the minimum, median, 95th percentile and maximum values of B factors of atoms in the group. The column labelled 'Q< 0.9' lists the number of atoms with occupancy less than 0.9.

Mol	Type	Chain	Res	Atoms	RSR	LLDF	B-factors(Å ²)	Q<0.9
5	CIT	B	402	13/13	0.36	3.42	86,105,120,121	0
5	CIT	B	403	13/13	0.29	1.94	76,93,112,130	0
5	CIT	C	403	13/13	0.30	1.85	83,102,121,121	0
4	SO4	A	402	5/5	0.27	0.55	144,160,185,189	0
4	SO4	B	404	5/5	0.24	0.33	130,132,163,163	0
3	GDP	B	401	28/28	0.26	0.04	66,93,109,122	0
5	CIT	C	402	13/13	0.23	-0.02	76,94,114,126	0
3	GDP	C	401	28/28	0.23	-0.30	60,80,94,110	0
3	GDP	D	401	28/28	0.24	-0.45	53,80,98,110	0
3	GDP	A	401	28/28	0.21	-0.50	77,88,99,120	0
4	SO4	C	404	5/5	0.12	-1.57	127,156,165,171	0

6.5 Other polymers ⓘ

There are no such residues in this entry.