



# Full wwPDB X-ray Structure Validation Report ⓘ

Feb 28, 2014 – 01:35 AM GMT

PDB ID : 2GCE  
Title : The 1,1-proton transfer reaction mechanism by alpha-methylacyl-CoA racemase is catalyzed by an aspartate/histidine pair and involves a smooth, methionine-rich surface for binding the fatty acyl moiety  
Authors : Bhaumik, P.; Wierenga, R.K.  
Deposited on : 2006-03-14  
Resolution : 1.85 Å(reported)

This is a full wwPDB validation report for a publicly released PDB entry.  
We welcome your comments at [validation@mail.wwpdb.org](mailto:validation@mail.wwpdb.org)  
A user guide is available at <http://wwpdb.org/ValidationPDFNotes.html>

---

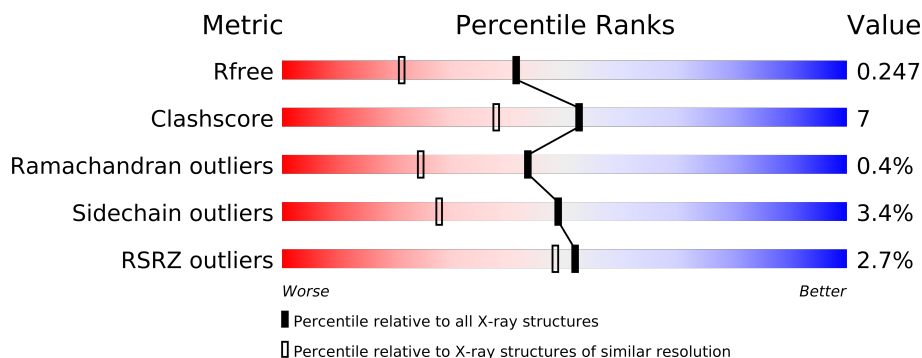
The following versions of software and data (see [references](#)) were used in the production of this report:

MolProbity : 4.02b-467  
Mogul : 1.15 2013  
Xtriage (Phenix) : dev-1323  
EDS : stable22639  
Percentile statistics : 21963  
Refmac : 5.8.0049  
CCP4 : 6.3.0 (Settle)  
Ideal geometry (proteins) : Engh & Huber (2001)  
Ideal geometry (DNA, RNA) : Parkinson et. al. (1996)  
Validation Pipeline (wwPDB-VP) : stable22683

# 1 Overall quality at a glance

The reported resolution of this entry is 1.85 Å.

Percentile scores (ranging between 0-100) for global validation metrics of the entry are shown in the following graphic. The table shows the number of entries on which the scores are based.



Metric	Whole archive (#Entries)	Similar resolution (#Entries, resolution range(Å))
$R_{free}$	66092	1269 (1.86-1.86)
Clashscore	79885	1470 (1.86-1.86)
Ramachandran outliers	78287	1451 (1.86-1.86)
Sidechain outliers	78261	1451 (1.86-1.86)
RSRZ outliers	66119	1269 (1.86-1.86)

The table below summarises the geometric issues observed across the polymeric chains and their fit to the electron density. The red, orange, yellow and green segments on the lower bar indicate the fraction of residues that contain outliers for  $\geq 3$ , 2, 1 and 0 types of geometric quality criteria. The upper red bar (where present) indicates the fraction of residues that have poor fit to the electron density.

Mol	Chain	Length	Quality of chain
1	A	360	
1	B	360	
1	C	360	
1	D	360	

The following table lists non-polymeric compounds that are outliers for geometric or electron-density-fit criteria:

Mol	Type	Chain	Res	Geometry	Electron density
2	SFC	B	1752[A]	-	X
2	SFC	D	1754[A]	-	X
3	RFC	B	2752[B]	-	X
3	RFC	C	2753[B]	-	X
3	RFC	D	2754[B]	-	X

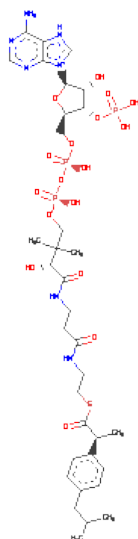
i

In the tables below, the ZeroOcc column contains the number of atoms modelled with zero occupancy, the AltConf column contains the number of residues with at least one atom in alternate conformation and the Trace column contains the number of residues modelled with at most 2 atoms.

- Molecule 1 is a protein called probable alpha-methylacyl-CoA racemase MCR.

Mol	Chain	Residues	Atoms					ZeroOcc	AltConf	Trace
1	A	354	Total 2687	C 1688	N 481	O 502	S 16	0	2	0
1	B	354	Total 2687	C 1688	N 481	O 502	S 16	0	2	0
1	C	354	Total 2687	C 1688	N 481	O 502	S 16	0	2	0
1	D	354	Total 2687	C 1688	N 481	O 502	S 16	0	2	0

- Molecule 2 is (S)-IBUPROFENOYL-COENZYMEA (three-letter code: SFC) (formula:  $C_{34}H_{53}N_7O_{17}P_3S$ ).



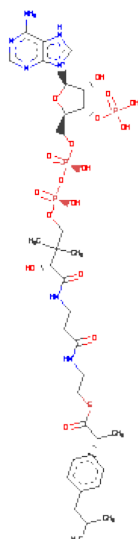
Mol	Chain	Residues	Atoms						ZeroOcc	AltConf
2	A	1	Total 62	C 34	N 7	O 17	P 3	S 1	0	1
2	B	1	Total 62	C 34	N 7	O 17	P 3	S 1	0	1

*Continued on next page...*

Continued from previous page...

Mol	Chain	Residues	Atoms						ZeroOcc	AltConf
2	C	1	Total	C	N	O	P	S	0	1
			62	34	7	17	3	1		
2	D	1	Total	C	N	O	P	S	0	1
			62	34	7	17	3	1		

- Molecule 3 is (R)-IBUPROFENOYL-COENZYME A (three-letter code: RFC) (formula:  $C_{34}H_{53}N_7O_{17}P_3S$ ).



Mol	Chain	Residues	Atoms						ZeroOcc	AltConf
3	A	1	Total	C	N	O	P	S	0	1
			62	34	7	17	3	1		
3	B	1	Total	C	N	O	P	S	0	1
			62	34	7	17	3	1		
3	C	1	Total	C	N	O	P	S	0	1
			62	34	7	17	3	1		
3	D	1	Total	C	N	O	P	S	0	1
			62	34	7	17	3	1		

- Molecule 4 is water.

Mol	Chain	Residues	Atoms		ZeroOcc	AltConf
4	A	270	Total	O	0	0
			270	270		
4	B	290	Total	O	0	0
			290	290		
4	C	265	Total	O	0	0
			265	265		

Continued on next page...

*Continued from previous page...*

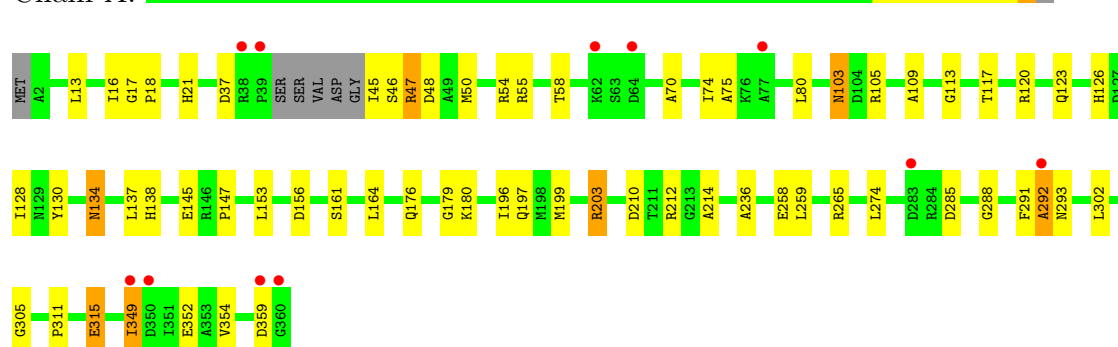
Mol	Chain	Residues	Atoms		ZeroOcc	AltConf
4	D	281	Total 281	O 281	0	0

### 3 Residue-property plots

These plots are drawn for all protein, RNA and DNA chains in the entry. The first graphic for a chain summarises the proportions of errors displayed in the second graphic. The second graphic shows the sequence view annotated by issues in geometry and electron density. Residues are color-coded according to the number of geometric quality criteria for which they contain at least one outlier: green = 0, yellow = 1, orange = 2 and red = 3 or more. A red dot above a residue indicates a poor fit to the electron density ( $RSRZ > 2$ ). Stretches of 2 or more consecutive residues without any outlier are shown as a green connector. Residues present in the sample, but not in the model, are shown in grey.

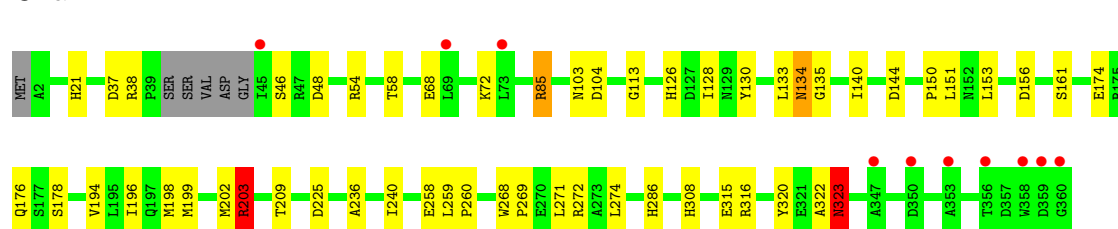
- Molecule 1: probable alpha-methylacyl-CoA racemase MCR

Chain A:



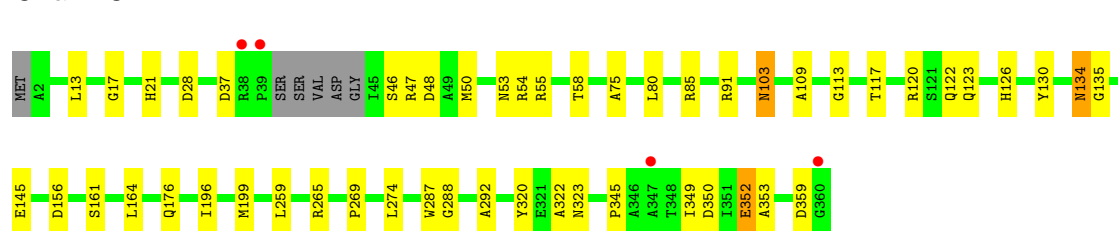
- Molecule 1: probable alpha-methylacyl-CoA racemase MCR

Chain B:



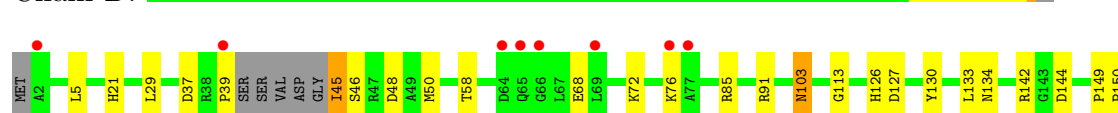
- Molecule 1: probable alpha-methylacyl-CoA racemase MCR

Chain C:



- Molecule 1: probable alpha-methylacyl-CoA racemase MCR

Chain D:





## 4 Data and refinement statistics

Property	Value	Source
Space group	C 1 2 1	Depositor
Cell constants a, b, c, $\alpha$ , $\beta$ , $\gamma$	179.95Å 79.58Å 117.43Å 90.00° 90.07° 90.00°	Depositor
Resolution (Å)	19.58 – 1.85 19.58 – 1.85	Depositor EDS
% Data completeness (in resolution range)	95.0 (19.58-1.85) 94.7 (19.58-1.85)	Depositor EDS
$R_{merge}$	0.07	Depositor
$R_{sym}$	0.07	Depositor
$\langle I/\sigma(I) \rangle$ <sup>1</sup>	2.57 (at 1.85Å)	Xtriage
Refinement program	REFMAC 5	Depositor
R, $R_{free}$	0.202 , 0.246 0.227 , 0.247	Depositor DCC
$R_{free}$ test set	6719 reflections (5.27%)	DCC
Wilson B-factor (Å <sup>2</sup> )	21.3	Xtriage
Anisotropy	0.138	Xtriage
Bulk solvent $k_{sol}$ (e/Å <sup>3</sup> ), $B_{sol}$ (Å <sup>2</sup> )	0.40 , 61.1	EDS
Estimated twinning fraction	0.487 for -h,-k,l	Xtriage
L-test for twinning	$\langle  L  \rangle = 0.44$ , $\langle L^2 \rangle = 0.26$	Xtriage
Outliers	0 of 134243 reflections	Xtriage
$F_o, F_c$ correlation	0.95	EDS
Total number of atoms	12350	wwPDB-VP
Average B, all atoms (Å <sup>2</sup> )	31.0	wwPDB-VP

Xtriage's analysis on translational NCS is as follows: *The analyses of the Patterson function reveals a significant off-origin peak that is 75.96 % of the origin peak, indicating pseudo translational symmetry. The chance of finding a peak of this or larger height randomly in a structure without pseudo translational symmetry is equal to 1.1422e-06. The detected translational NCS is most likely also responsible for the elevated intensity ratio.*

<sup>1</sup>Intensities estimated from amplitudes.



## 5 Model quality i

### 5.1 Standard geometry i

Bond lengths and bond angles in the following residue types are not validated in this section: RFC, SFC

The Z score for a bond length (or angle) is the number of standard deviations the observed value is removed from the expected value. A bond length (or angle) with  $|Z| > 5$  is considered an outlier worth inspection. RMSZ is the root-mean-square of all Z scores of the bond lengths (or angles).

Mol	Chain	Bond lengths		Bond angles	
		RMSZ	# Z  >5	RMSZ	# Z  >5
1	A	0.63	0/2756	0.72	1/3748 (0.0%)
1	B	0.63	0/2756	0.71	1/3748 (0.0%)
1	C	0.59	0/2756	0.69	0/3748
1	D	0.59	0/2756	0.68	2/3748 (0.1%)
All	All	0.61	0/11024	0.70	4/14992 (0.0%)

Chiral center outliers are detected by calculating the chiral volume of a chiral center and verifying if the center is modelled as a planar moiety or with the opposite hand. A planarity outlier is detected by checking planarity of atoms in a peptide group, atoms in a mainchain group or atoms of a sidechain that are expected to be planar.

Mol	Chain	#Chirality outliers	#Planarity outliers
1	A	0	1
1	B	0	1
1	C	0	1
All	All	0	3

There are no bond length outliers.

All (4) bond angle outliers are listed below:

Mol	Chain	Res	Type	Atoms	Z	Observed(°)	Ideal(°)
1	B	203	ARG	NE-CZ-NH1	6.78	123.69	120.30
1	D	203	ARG	NE-CZ-NH1	6.23	123.42	120.30
1	A	203	ARG	NE-CZ-NH1	5.92	123.26	120.30
1	D	142	ARG	NE-CZ-NH1	-5.32	117.64	120.30

There are no chirality outliers.

All (3) planarity outliers are listed below:

Mol	Chain	Res	Type	Group
1	A	54	ARG	Peptide
1	B	54	ARG	Peptide
1	C	54	ARG	Peptide

## 5.2 Close contacts

In the following table, the Non-H and H(model) columns list the number of non-hydrogen atoms and hydrogen atoms in the chain respectively. The H(added) column lists the number of hydrogens added by MolProbity. The Clashes column lists the number of clashes within the asymmetric unit, and the number in parentheses is this value normalized per 1000 atoms of the molecule in the chain. The Symm-Clashes column gives symmetry related clashes, in the same way as for the Clashes column.

Mol	Chain	Non-H	H(model)	H(added)	Clashes	Symm-Clashes
1	A	2687	0	2628	53	1
1	B	2687	0	2628	42	1
1	C	2687	0	2628	42	0
1	D	2687	0	2628	36	0
2	A	62	0	49	2	0
2	B	62	0	49	3	0
2	C	62	0	49	4	0
2	D	62	0	49	5	0
3	A	62	0	49	4	0
3	B	62	0	49	4	0
3	C	62	0	49	4	0
3	D	62	0	49	5	0
4	A	270	0	0	10	1
4	B	290	0	0	7	1
4	C	265	0	0	8	0
4	D	281	0	0	5	0
All	All	12350	0	10904	158	2

Clashscore is defined as the number of clashes calculated for the entry per 1000 atoms (including hydrogens) of the entry. The overall clashscore for this entry is 7.

All (158) close contacts within the same asymmetric unit are listed below.

Atom-1	Atom-2	Distance(Å)	Clash(Å)
1:A:46:SER:OG	1:A:48[B]:ASP:OD1	1.65	1.12
1:C:46:SER:OG	1:C:48[B]:ASP:OD1	1.70	1.07
1:C:17:GLY:H	2:C:1753[A]:SFC:H10	1.21	1.04
1:A:47:ARG:HH11	1:A:47:ARG:HG3	1.21	1.01
1:C:47:ARG:HH11	1:C:47:ARG:HB3	1.27	0.98

*Continued on next page...*

*Continued from previous page...*

Atom-1	Atom-2	Distance(Å)	Clash(Å)
1:B:46:SER:OG	1:B:48[B]:ASP:OD1	1.85	0.92
1:A:47:ARG:NH1	1:A:47:ARG:HG3	1.85	0.88
1:A:349:ILE:HD11	1:A:354:VAL:HG23	1.58	0.85
1:B:198:MET:HG2	1:B:202:MET:HE2	1.56	0.85
1:A:288:GLY:O	1:A:292:ALA:HB2	1.77	0.85
1:A:120:ARG:HH11	1:A:123:GLN:HE22	1.25	0.83
1:C:259:LEU:HD22	1:C:274:LEU:HD13	1.63	0.81
1:A:156:ASP:OD2	3:A:2751[B]:RFC:H2	1.80	0.80
1:C:17:GLY:N	2:C:1753[A]:SFC:H10	1.97	0.80
1:C:47:ARG:HB3	1:C:47:ARG:NH1	1.97	0.79
1:A:259:LEU:HD22	1:A:274:LEU:HD13	1.64	0.79
1:A:265:ARG:NH1	4:A:2994:HOH:O	2.15	0.78
1:A:47:ARG:HH11	1:A:47:ARG:CG	1.99	0.76
1:D:21:HIS:HD2	1:D:161:SER:OG	1.71	0.73
1:C:126:HIS:ND1	3:C:2753[B]:RFC:H5	2.03	0.73
1:B:21:HIS:HD2	1:B:161:SER:OG	1.72	0.72
1:D:259:LEU:HD22	1:D:274:LEU:HD13	1.71	0.71
1:B:126:HIS:ND1	3:B:2752[B]:RFC:H5	2.06	0.71
1:C:48[B]:ASP:HB2	1:C:50[B]:MET:HG3	1.77	0.67
1:A:311:PRO:O	1:A:315:GLU:HG2	1.95	0.67
1:D:286:HIS:HE1	4:D:2820:HOH:O	1.77	0.67
1:B:156:ASP:OD2	2:B:1752[A]:SFC:H5	1.96	0.66
1:C:265:ARG:O	4:C:2952:HOH:O	2.14	0.66
1:B:286:HIS:HE1	4:B:2781:HOH:O	1.78	0.66
1:C:120:ARG:HH11	1:C:123:GLN:HE22	1.44	0.65
1:C:126:HIS:CE1	3:C:2753[B]:RFC:H5	2.32	0.64
1:A:291:PHE:O	1:A:293:ASN:N	2.21	0.64
1:C:269:PRO:HD3	4:C:2952:HOH:O	1.98	0.63
1:A:105:ARG:HG2	4:A:3015:HOH:O	1.97	0.63
1:A:305:GLY:HA2	1:B:203:ARG:HH22	1.62	0.63
1:B:85:ARG:HD2	4:B:2858:HOH:O	1.97	0.63
1:B:126:HIS:CE1	3:B:2752[B]:RFC:H5	2.34	0.62
1:D:156:ASP:OD2	3:D:2754[B]:RFC:H2	1.98	0.62
1:A:48[B]:ASP:HB2	1:A:50[B]:MET:HG3	1.81	0.62
1:B:156:ASP:OD2	3:B:2752[B]:RFC:H2	1.99	0.61
1:D:46:SER:OG	1:D:48[B]:ASP:OD1	2.18	0.61
1:B:258:GLU:HG3	4:B:2958:HOH:O	1.99	0.61
1:D:85:ARG:HD3	2:D:1754[A]:SFC:O1A	2.01	0.61
1:D:85:ARG:HD3	3:D:2754[B]:RFC:O1A	2.01	0.61
1:A:153:LEU:HD21	1:B:196:ILE:HG13	1.84	0.60
1:B:259:LEU:HD22	1:B:274:LEU:HD13	1.84	0.59
1:A:212:ARG:HD3	4:A:3016:HOH:O	2.02	0.59

*Continued on next page...*

*Continued from previous page...*

Atom-1	Atom-2	Distance(Å)	Clash(Å)
1:C:176:GLN:NE2	4:C:3011:HOH:O	2.28	0.59
1:A:17:GLY:H	2:A:1751[A]:SFC:H112	1.68	0.58
1:B:320:TYR:CE1	1:B:322:ALA:HB2	2.38	0.58
1:C:156:ASP:OD2	3:C:2753[B]:RFC:H2	2.03	0.58
1:A:285:ASP:HB2	4:A:2965:HOH:O	2.03	0.58
1:C:145:GLU:HG2	4:C:2957:HOH:O	2.04	0.58
1:D:279:PHE:HB3	4:D:3027:HOH:O	2.02	0.58
1:D:258:GLU:HG3	4:D:2945:HOH:O	2.03	0.57
1:A:258:GLU:HG3	4:A:2960:HOH:O	2.05	0.57
1:C:75:ALA:HA	1:C:103:ASN:HB2	1.88	0.56
1:A:176:GLN:HE21	1:B:176:GLN:NE2	2.03	0.56
3:A:2751[B]:RFC:H5	1:B:240:ILE:CD1	2.36	0.55
1:C:50[A]:MET:SD	2:C:1753[A]:SFC:H111	2.47	0.55
1:D:322:ALA:O	1:D:323:ASN:C	2.44	0.54
1:A:196:ILE:HG13	1:B:153:LEU:HD21	1.90	0.54
1:A:349:ILE:CD1	1:A:354:VAL:HG23	2.34	0.54
1:A:113:GLY:HA3	1:A:130:TYR:CZ	2.43	0.54
1:A:126:HIS:ND1	2:A:1751[A]:SFC:H2	2.23	0.53
1:A:138:HIS:O	1:A:212:ARG:HD3	2.09	0.52
1:B:209:THR:HG23	4:B:3034:HOH:O	2.09	0.52
1:C:352:GLU:HG3	4:C:3016:HOH:O	2.09	0.52
1:D:156:ASP:OD2	2:D:1754[A]:SFC:H5	2.09	0.52
1:A:349:ILE:HD11	1:A:354:VAL:CG2	2.35	0.52
1:B:126:HIS:ND1	2:B:1752[A]:SFC:H2	2.24	0.52
1:D:45:ILE:HD11	4:D:3023:HOH:O	2.08	0.52
1:A:147:PRO:HB3	4:A:3016:HOH:O	2.10	0.51
1:A:145:GLU:HG2	4:A:3007:HOH:O	2.10	0.51
1:C:350:ASP:O	1:C:353:ALA:HB3	2.10	0.51
1:A:105:ARG:NH1	4:A:3015:HOH:O	2.43	0.51
1:A:21:HIS:HD2	1:A:161:SER:OG	1.94	0.51
1:D:126:HIS:ND1	2:D:1754[A]:SFC:H2	2.26	0.51
1:B:113:GLY:HA3	1:B:130:TYR:CZ	2.45	0.51
1:C:126:HIS:HB3	3:C:2753[B]:RFC:H133	1.93	0.50
1:C:288:GLY:O	1:C:292:ALA:HB2	2.11	0.50
1:B:85:ARG:HG2	4:B:3009:HOH:O	2.12	0.50
1:B:323:ASN:N	1:B:323:ASN:OD1	2.44	0.50
1:C:176:GLN:CD	1:D:176:GLN:HG2	2.33	0.50
1:C:85:ARG:NH1	1:C:122:GLN:O	2.41	0.50
1:C:91:ARG:NH2	4:C:3001:HOH:O	2.45	0.49
1:D:39:PRO:HA	1:D:58:THR:OG1	2.13	0.49
1:A:126:HIS:HB3	3:A:2751[B]:RFC:H133	1.96	0.48
1:D:126:HIS:CE1	3:D:2754[B]:RFC:H5	2.48	0.48

*Continued on next page...*

*Continued from previous page...*

Atom-1	Atom-2	Distance(Å)	Clash(Å)
1:C:345:PRO:HG2	4:C:2849:HOH:O	2.14	0.48
1:A:70:ALA:O	1:A:74:ILE:HG13	2.13	0.48
1:C:113:GLY:HA3	1:C:130:TYR:CZ	2.48	0.48
1:C:359:ASP:HA	4:C:2965:HOH:O	2.14	0.48
1:B:308:HIS:HA	4:B:2920:HOH:O	2.13	0.47
1:D:76:LYS:HG3	1:D:360:GLY:HA3	1.95	0.47
1:A:179:GLY:C	4:A:3015:HOH:O	2.53	0.47
1:A:13:LEU:HG	1:A:80:LEU:HD11	1.95	0.47
1:B:174:GLU:OE2	1:B:178:SER:HB3	2.15	0.47
1:A:176:GLN:NE2	1:B:176:GLN:NE2	2.62	0.47
1:C:109:ALA:HB1	1:C:164:LEU:HD11	1.97	0.47
1:B:38:ARG:HG2	3:B:2752[B]:RFC:C6A	2.44	0.47
1:A:214:ALA:O	1:A:265:ARG:NH2	2.44	0.47
1:B:268:TRP:N	1:B:269:PRO:CD	2.78	0.47
1:A:128:ILE:HG12	1:B:236:ALA:HB1	1.97	0.46
1:C:13:LEU:HG	1:C:80:LEU:HD11	1.97	0.46
1:D:21:HIS:CD2	1:D:161:SER:OG	2.60	0.46
1:A:55:ARG:HD2	1:A:349:ILE:HD13	1.98	0.46
1:D:127:ASP:N	2:D:1754[A]:SFC:O1	2.43	0.46
1:B:225:ASP:OD2	1:B:272:ARG:NH1	2.48	0.46
1:C:21:HIS:HD2	1:C:161:SER:OG	1.99	0.46
1:C:21:HIS:HE1	1:D:194:VAL:O	1.99	0.46
1:B:38:ARG:HG2	2:B:1752[A]:SFC:C6A	2.44	0.46
1:C:55:ARG:HD2	1:C:349:ILE:CD1	2.45	0.45
1:C:135:GLY:HA2	1:D:302:LEU:O	2.16	0.45
1:A:137:LEU:O	4:A:3016:HOH:O	2.21	0.45
1:A:75:ALA:HA	1:A:103:ASN:HB2	1.97	0.45
1:D:149:PRO:HA	1:D:150:PRO:HD3	1.84	0.45
1:D:48[B]:ASP:HB3	1:D:50[B]:MET:HG3	1.99	0.45
1:D:113:GLY:HA3	1:D:130:TYR:CZ	2.52	0.45
1:C:287:TRP:HA	1:C:287:TRP:CE3	2.52	0.44
1:B:260:PRO:HG2	1:B:271:LEU:HB2	1.99	0.44
1:D:252:LEU:HD21	1:D:279:PHE:CE1	2.52	0.44
1:B:140:ILE:HD13	1:B:150:PRO:HG3	2.00	0.44
1:A:203:ARG:HD2	1:A:210:ASP:OD1	2.17	0.44
1:C:17:GLY:HA2	2:C:1753[A]:SFC:H8	1.99	0.44
1:C:134:ASN:C	1:C:134:ASN:HD22	2.20	0.44
1:A:120:ARG:NH1	1:A:123:GLN:HE22	2.05	0.43
1:D:320:TYR:CE1	1:D:322:ALA:HB2	2.53	0.43
1:C:113:GLY:HA3	1:C:130:TYR:CE1	2.53	0.43
1:A:21:HIS:HE1	1:B:194:VAL:O	2.02	0.43
1:A:134:ASN:C	1:A:134:ASN:HD22	2.22	0.43

*Continued on next page...*

Continued from previous page...

Atom-1	Atom-2	Distance(Å)	Clash(Å)
1:A:236:ALA:HB1	1:B:128:ILE:HG12	2.00	0.43
1:C:55:ARG:HD2	1:C:349:ILE:HD11	2.01	0.43
1:D:196:ILE:HG12	1:D:199:MET:HB2	2.01	0.43
1:B:68:GLU:O	1:B:72:LYS:HG3	2.19	0.42
1:A:109:ALA:HB1	1:A:164:LEU:HD11	2.02	0.42
1:A:117:THR:O	1:B:316:ARG:HD2	2.19	0.42
1:B:259:LEU:HB3	1:B:260:PRO:HD2	2.01	0.42
1:D:5:LEU:HD12	1:D:29:LEU:HB2	2.02	0.42
1:D:241:GLU:HA	1:D:242:PRO:HD3	1.93	0.42
1:B:198:MET:HG2	1:B:202:MET:CE	2.40	0.41
1:D:91:ARG:NH1	2:D:1754[A]:SFC:O7A	2.48	0.41
1:D:91:ARG:NH1	3:D:2754[B]:RFC:O7A	2.48	0.41
1:C:117:THR:O	1:D:316:ARG:HD2	2.20	0.41
1:C:28:ASP:HA	1:C:53:ASN:ND2	2.35	0.41
1:D:126:HIS:HB3	3:D:2754[B]:RFC:H133	2.02	0.41
1:B:286:HIS:CE1	4:B:2781:HOH:O	2.61	0.41
1:D:68:GLU:HG2	1:D:72:LYS:HE3	2.02	0.41
1:B:134:ASN:HD22	1:B:134:ASN:C	2.23	0.41
1:D:229:CYS:SG	4:D:3027:HOH:O	2.63	0.41
1:C:196:ILE:HG13	1:D:153:LEU:HD21	2.03	0.41
1:A:16:ILE:HD12	3:A:2751[B]:RFC:S1P	2.62	0.40
1:A:18:PRO:HB3	1:A:156:ASP:O	2.21	0.40
1:C:320:TYR:CE1	1:C:322:ALA:HB2	2.56	0.40
1:A:302:LEU:O	1:B:135:GLY:HA2	2.21	0.40

All (2) symmetry-related close contacts are listed below. The label for Atom-2 includes the symmetry operator and encoded unit-cell translations to be applied.

Atom-1	Atom-2	Distance(Å)	Clash(Å)
4:A:2768:HOH:O	4:B:3034:HOH:O[4_546]	2.18	0.02
1:A:180:LYS:NZ	1:B:104:ASP:OD2[2_656]	2.19	0.01

## 5.3 Torsion angles

### 5.3.1 Protein backbone ⓘ

In the following table, the Percentiles column shows the percent Ramachandran outliers of the chain as a percentile score with respect to all X-ray entries followed by that with respect to entries of similar resolution. The Analysed column shows the number of residues for which the backbone conformation was analysed, and the total number of residues.

Mol	Chain	Analysed	Favoured	Allowed	Outliers	Percentiles	
1	A	352/360 (98%)	339 (96%)	12 (3%)	1 (0%)	50	32
1	B	352/360 (98%)	338 (96%)	12 (3%)	2 (1%)	33	16
1	C	352/360 (98%)	340 (97%)	11 (3%)	1 (0%)	50	32
1	D	352/360 (98%)	338 (96%)	12 (3%)	2 (1%)	33	16
All	All	1408/1440 (98%)	1355 (96%)	47 (3%)	6 (0%)	43	24

All (6) Ramachandran outliers are listed below:

Mol	Chain	Res	Type
1	B	323	ASN
1	C	323	ASN
1	D	323	ASN
1	A	292	ALA
1	B	151	LEU
1	D	103	ASN

### 5.3.2 Protein sidechains ⓘ

In the following table, the Percentiles column shows the percent sidechain outliers of the chain as a percentile score with respect to all X-ray entries followed by that with respect to entries of similar resolution. The Analysed column shows the number of residues for which the sidechain conformation was analysed, and the total number of residues.

Mol	Chain	Analysed	Rotameric	Outliers	Percentiles	
1	A	272/275 (99%)	261 (96%)	11 (4%)	42	21
1	B	272/275 (99%)	261 (96%)	11 (4%)	42	21
1	C	272/275 (99%)	266 (98%)	6 (2%)	64	48
1	D	272/275 (99%)	263 (97%)	9 (3%)	50	29
All	All	1088/1100 (99%)	1051 (97%)	37 (3%)	49	28

All (37) residues with a non-rotameric sidechain are listed below:

Mol	Chain	Res	Type
1	A	37	ASP
1	A	45	ILE
1	A	47	ARG
1	A	58	THR
1	A	103	ASN
1	A	134	ASN

*Continued on next page...*

*Continued from previous page...*

Mol	Chain	Res	Type
1	A	199	MET
1	A	315	GLU
1	A	349	ILE
1	A	352	GLU
1	A	359	ASP
1	B	37	ASP
1	B	58	THR
1	B	85	ARG
1	B	103	ASN
1	B	133	LEU
1	B	134	ASN
1	B	144	ASP
1	B	199	MET
1	B	203	ARG
1	B	315	GLU
1	B	323	ASN
1	C	37	ASP
1	C	58	THR
1	C	103	ASN
1	C	134	ASN
1	C	199	MET
1	C	352	GLU
1	D	37	ASP
1	D	45	ILE
1	D	103	ASN
1	D	133	LEU
1	D	134	ASN
1	D	144	ASP
1	D	199	MET
1	D	203	ARG
1	D	349	ILE

Some sidechains can be flipped to improve hydrogen bonding and reduce clashes. All (22) such sidechains are listed below:

Mol	Chain	Res	Type
1	A	21	HIS
1	A	103	ASN
1	A	123	GLN
1	A	134	ASN
1	A	286	HIS
1	B	21	HIS
1	B	103	ASN

*Continued on next page...*



*Continued from previous page...*

Mol	Chain	Res	Type
1	B	134	ASN
1	B	176	GLN
1	B	263	ASN
1	B	286	HIS
1	C	21	HIS
1	C	103	ASN
1	C	123	GLN
1	C	134	ASN
1	C	286	HIS
1	D	21	HIS
1	D	103	ASN
1	D	116	GLN
1	D	134	ASN
1	D	263	ASN
1	D	286	HIS

### 5.3.3 RNA ⓘ

There are no RNA chains in this entry.

## 5.4 Non-standard residues in protein, DNA, RNA chains ⓘ

There are no non-standard protein/DNA/RNA residues in this entry.

## 5.5 Carbohydrates ⓘ

There are no carbohydrates in this entry.

## 5.6 Ligand geometry ⓘ

8 ligands are modelled in this entry.

In the following table, the Counts columns list the number of bonds (or angles) for which Mogul statistics could be retrieved, the number of bonds (or angles) that are observed in the model and the number of bonds (or angles) that are defined in the chemical component dictionary. The Link column lists molecule types, if any, to which the group is linked. The Z score for a bond length (or angle) is the number of standard deviations the observed value is removed from the expected value. A bond length (or angle) with  $|Z| > 2$  is considered an outlier worth inspection. RMSZ is the root-mean-square of all Z scores of the bond lengths (or angles).

Mol	Type	Chain	Res	Link	Bond lengths			Bond angles		
					Counts	RMSZ	# Z  > 2	Counts	RMSZ	# Z  > 2
2	SFC	A	1751[A]	-	65,65,65	1.33	8 (12%)	95,96,96	1.74	16 (16%)
3	RFC	A	2751[B]	-	65,65,65	1.25	8 (12%)	95,96,96	1.93	17 (17%)
2	SFC	B	1752[A]	-	65,65,65	1.20	6 (9%)	95,96,96	1.78	15 (15%)
3	RFC	B	2752[B]	-	65,65,65	1.20	4 (6%)	95,96,96	2.03	17 (17%)
2	SFC	C	1753[A]	-	65,65,65	1.31	8 (12%)	95,96,96	1.72	14 (14%)
3	RFC	C	2753[B]	-	65,65,65	1.25	7 (10%)	95,96,96	1.88	15 (15%)
2	SFC	D	1754[A]	-	65,65,65	1.29	4 (6%)	95,96,96	2.02	17 (17%)
3	RFC	D	2754[B]	-	65,65,65	1.23	4 (6%)	95,96,96	2.04	17 (17%)

In the following table, the Chirals column lists the number of chiral outliers, the number of chiral centers analysed, the number of these observed in the model and the number defined in the chemical component dictionary. Similar counts are reported in the Torsion and Rings columns. '-' means no outliers of that kind were identified.

Mol	Type	Chain	Res	Link	Chirals	Torsions	Rings
2	SFC	A	1751[A]	-	-	0/63/79/79	0/2/4/4
3	RFC	A	2751[B]	-	-	0/63/79/79	0/2/4/4
2	SFC	B	1752[A]	-	-	0/63/79/79	0/2/4/4
3	RFC	B	2752[B]	-	-	0/63/79/79	0/2/4/4
2	SFC	C	1753[A]	-	-	0/63/79/79	0/2/4/4
3	RFC	C	2753[B]	-	-	0/63/79/79	0/2/4/4
2	SFC	D	1754[A]	-	-	0/63/79/79	0/2/4/4
3	RFC	D	2754[B]	-	-	0/63/79/79	0/2/4/4

All (49) bond length outliers are listed below:

Mol	Chain	Res	Type	Atoms	Z	Observed(Å)	Ideal(Å)
2	D	1754[A]	SFC	C1-S1P	-7.42	1.67	1.76
2	C	1753[A]	SFC	C1-S1P	-6.91	1.68	1.76
3	D	2754[B]	RFC	C1-S1P	-6.90	1.68	1.76
2	A	1751[A]	SFC	C1-S1P	-6.88	1.68	1.76
3	C	2753[B]	RFC	C1-S1P	-6.62	1.68	1.76
3	B	2752[B]	RFC	C1-S1P	-6.60	1.68	1.76
3	A	2751[B]	RFC	C1-S1P	-6.51	1.68	1.76
2	B	1752[A]	SFC	C1-S1P	-6.12	1.69	1.76
2	C	1753[A]	SFC	C2-C1	-2.96	1.51	1.53
3	A	2751[B]	RFC	C6A-C5A	2.94	1.50	1.44
2	A	1751[A]	SFC	C6A-C5A	2.94	1.50	1.44
2	C	1753[A]	SFC	C6A-C5A	2.86	1.50	1.44
3	C	2753[B]	RFC	C6A-C5A	2.86	1.50	1.44

*Continued on next page...*

*Continued from previous page...*

Mol	Chain	Res	Type	Atoms	Z	Observed(Å)	Ideal(Å)
2	A	1751[A]	SFC	C2-C1	-2.82	1.51	1.53
2	B	1752[A]	SFC	O1-C1	2.72	1.23	1.20
2	D	1754[A]	SFC	C2-C1	-2.63	1.51	1.53
3	B	2752[B]	RFC	C6A-C5A	2.59	1.49	1.44
2	B	1752[A]	SFC	C6A-C5A	2.59	1.49	1.44
2	A	1751[A]	SFC	O1-C1	2.59	1.23	1.20
3	D	2754[B]	RFC	C6A-C5A	2.49	1.49	1.44
2	D	1754[A]	SFC	C6A-C5A	2.49	1.49	1.44
3	C	2753[B]	RFC	O1-C1	2.48	1.23	1.20
3	A	2751[B]	RFC	O1-C1	2.37	1.23	1.20
3	D	2754[B]	RFC	O1-C1	2.36	1.23	1.20
3	B	2752[B]	RFC	C3-C2	-2.30	1.48	1.52
2	C	1753[A]	SFC	P2A-O3A	2.29	1.64	1.59
3	C	2753[B]	RFC	P2A-O3A	2.29	1.64	1.59
2	B	1752[A]	SFC	C2-C1	-2.24	1.51	1.53
2	C	1753[A]	SFC	C4A-N9A	-2.23	1.34	1.37
3	C	2753[B]	RFC	C4A-N9A	-2.23	1.34	1.37
3	A	2751[B]	RFC	O4B-C1B	2.23	1.44	1.41
2	A	1751[A]	SFC	O4B-C1B	2.23	1.44	1.41
3	A	2751[B]	RFC	P2A-O3A	2.22	1.63	1.59
2	A	1751[A]	SFC	P2A-O3A	2.22	1.63	1.59
3	A	2751[B]	RFC	P1A-O3A	2.19	1.63	1.59
2	A	1751[A]	SFC	P1A-O3A	2.19	1.63	1.59
3	A	2751[B]	RFC	C4A-N9A	-2.16	1.34	1.37
2	A	1751[A]	SFC	C4A-N9A	-2.16	1.34	1.37
2	C	1753[A]	SFC	O1-C1	2.15	1.23	1.20
3	A	2751[B]	RFC	C3-C2	-2.11	1.49	1.52
3	B	2752[B]	RFC	C4A-N9A	-2.08	1.34	1.37
2	B	1752[A]	SFC	C4A-N9A	-2.08	1.34	1.37
3	D	2754[B]	RFC	P2A-O3A	2.06	1.63	1.59
2	D	1754[A]	SFC	P2A-O3A	2.06	1.63	1.59
2	C	1753[A]	SFC	O4B-C1B	2.04	1.44	1.41
3	C	2753[B]	RFC	O4B-C1B	2.04	1.44	1.41
2	B	1752[A]	SFC	C3-C2	-2.04	1.49	1.52
2	C	1753[A]	SFC	C3-C2	-2.03	1.49	1.52
3	C	2753[B]	RFC	C3-C2	-2.01	1.49	1.52

All (128) bond angle outliers are listed below:

Mol	Chain	Res	Type	Atoms	Z	Observed(°)	Ideal(°)
3	B	2752[B]	RFC	C2-C1-S1P	10.85	123.32	111.79
2	D	1754[A]	SFC	C2-C1-S1P	10.68	123.14	111.79

*Continued on next page...*

*Continued from previous page...*

Mol	Chain	Res	Type	Atoms	Z	Observed(°)	Ideal(°)
3	D	2754[B]	RFC	C2-C1-S1P	10.25	122.68	111.79
3	A	2751[B]	RFC	C2-C1-S1P	9.80	122.21	111.79
3	C	2753[B]	RFC	C2-C1-S1P	9.16	121.52	111.79
2	A	1751[A]	SFC	C2-C1-S1P	8.04	120.33	111.79
2	C	1753[A]	SFC	C2-C1-S1P	7.74	120.02	111.79
3	D	2754[B]	RFC	N3A-C2A-N1A	-7.54	122.41	128.71
2	D	1754[A]	SFC	N3A-C2A-N1A	-7.54	122.41	128.71
3	B	2752[B]	RFC	N3A-C2A-N1A	-7.53	122.41	128.71
2	B	1752[A]	SFC	N3A-C2A-N1A	-7.53	122.41	128.71
2	C	1753[A]	SFC	N3A-C2A-N1A	-7.50	122.44	128.71
3	C	2753[B]	RFC	N3A-C2A-N1A	-7.50	122.44	128.71
3	A	2751[B]	RFC	N3A-C2A-N1A	-7.40	122.53	128.71
2	A	1751[A]	SFC	N3A-C2A-N1A	-7.40	122.53	128.71
3	B	2752[B]	RFC	O1-C1-S1P	-7.08	117.53	123.67
2	D	1754[A]	SFC	O1-C1-S1P	-6.72	117.84	123.67
3	D	2754[B]	RFC	O1-C1-S1P	-6.64	117.90	123.67
2	B	1752[A]	SFC	C2-C1-S1P	6.15	118.33	111.79
3	C	2753[B]	RFC	O1-C1-S1P	-6.06	118.41	123.67
2	B	1752[A]	SFC	C13-C2-C1	5.86	114.31	109.91
3	A	2751[B]	RFC	O1-C1-S1P	-5.85	118.59	123.67
3	D	2754[B]	RFC	C3P-N4P-C5P	4.95	132.93	122.84
3	A	2751[B]	RFC	C3P-N4P-C5P	4.75	132.50	122.84
3	D	2754[B]	RFC	N3A-C4A-N9A	4.54	133.63	125.43
2	D	1754[A]	SFC	N3A-C4A-N9A	4.54	133.63	125.43
2	C	1753[A]	SFC	O1-C1-S1P	-4.51	119.76	123.67
2	A	1751[A]	SFC	O1-C1-S1P	-4.44	119.82	123.67
3	B	2752[B]	RFC	N3A-C4A-N9A	4.36	133.30	125.43
2	B	1752[A]	SFC	N3A-C4A-N9A	4.36	133.30	125.43
2	C	1753[A]	SFC	N3A-C4A-N9A	4.35	133.28	125.43
3	C	2753[B]	RFC	N3A-C4A-N9A	4.35	133.28	125.43
2	B	1752[A]	SFC	C3P-N4P-C5P	4.27	131.53	122.84
3	A	2751[B]	RFC	N3A-C4A-N9A	4.16	132.94	125.43
2	A	1751[A]	SFC	N3A-C4A-N9A	4.16	132.94	125.43
2	B	1752[A]	SFC	O1-C1-S1P	-3.93	120.26	123.67
2	C	1753[A]	SFC	C2P-C3P-N4P	-3.79	103.93	112.50
3	D	2754[B]	RFC	C3-C2-C1	3.76	117.06	109.33
3	C	2753[B]	RFC	C3P-N4P-C5P	3.71	130.39	122.84
2	A	1751[A]	SFC	C2P-C3P-N4P	-3.66	104.23	112.50
2	D	1754[A]	SFC	C3P-N4P-C5P	3.57	130.11	122.84
2	D	1754[A]	SFC	C3-C2-C1	3.35	116.22	109.33
3	A	2751[B]	RFC	C13-C2-C1	3.32	112.41	109.91
3	B	2752[B]	RFC	C3P-N4P-C5P	3.32	129.60	122.84

*Continued on next page...*

*Continued from previous page...*

Mol	Chain	Res	Type	Atoms	Z	Observed(°)	Ideal(°)
3	D	2754[B]	RFC	C5A-C4A-N3A	-3.14	118.86	125.70
2	D	1754[A]	SFC	C5A-C4A-N3A	-3.14	118.86	125.70
2	C	1753[A]	SFC	C7P-N8P-C9P	3.11	128.97	122.57
3	C	2753[B]	RFC	C7P-N8P-C9P	3.11	128.97	122.57
2	C	1753[A]	SFC	C5A-C4A-N3A	-3.10	118.95	125.70
3	C	2753[B]	RFC	C5A-C4A-N3A	-3.10	118.95	125.70
3	A	2751[B]	RFC	C5A-C4A-N3A	-3.09	118.98	125.70
2	A	1751[A]	SFC	C5A-C4A-N3A	-3.09	118.98	125.70
3	B	2752[B]	RFC	C5A-C4A-N3A	-3.06	119.03	125.70
2	B	1752[A]	SFC	C5A-C4A-N3A	-3.06	119.03	125.70
3	B	2752[B]	RFC	C7P-N8P-C9P	3.05	128.84	122.57
2	B	1752[A]	SFC	C7P-N8P-C9P	3.05	128.84	122.57
3	D	2754[B]	RFC	O4B-C1B-N9A	2.99	111.22	108.44
2	D	1754[A]	SFC	O4B-C1B-N9A	2.99	111.22	108.44
3	D	2754[B]	RFC	C7P-N8P-C9P	2.98	128.70	122.57
2	D	1754[A]	SFC	C7P-N8P-C9P	2.98	128.70	122.57
3	B	2752[B]	RFC	O4B-C1B-N9A	2.97	111.20	108.44
2	B	1752[A]	SFC	O4B-C1B-N9A	2.97	111.20	108.44
2	D	1754[A]	SFC	O1-C1-C2	-2.94	119.02	124.31
3	B	2752[B]	RFC	O1-C1-C2	-2.88	119.12	124.31
3	A	2751[B]	RFC	O1-C1-C2	-2.85	119.18	124.31
3	C	2753[B]	RFC	C3-C2-C1	2.84	115.17	109.33
2	C	1753[A]	SFC	C2A-N3A-C4A	2.81	122.02	114.01
3	C	2753[B]	RFC	C2A-N3A-C4A	2.81	122.02	114.01
3	A	2751[B]	RFC	C2A-N3A-C4A	2.81	122.01	114.01
2	A	1751[A]	SFC	C2A-N3A-C4A	2.81	122.01	114.01
3	B	2752[B]	RFC	C3-C2-C1	2.77	115.03	109.33
3	D	2754[B]	RFC	C2A-N3A-C4A	2.76	121.88	114.01
2	D	1754[A]	SFC	C2A-N3A-C4A	2.76	121.88	114.01
2	C	1753[A]	SFC	CDP-CBP-CCP	-2.74	104.81	108.76
3	C	2753[B]	RFC	CDP-CBP-CCP	-2.74	104.81	108.76
3	B	2752[B]	RFC	C2A-N3A-C4A	2.74	121.80	114.01
2	B	1752[A]	SFC	C2A-N3A-C4A	2.74	121.80	114.01
3	D	2754[B]	RFC	O1-C1-C2	-2.73	119.40	124.31
3	A	2751[B]	RFC	C3-C2-C1	2.71	114.89	109.33
2	C	1753[A]	SFC	C3P-N4P-C5P	2.54	128.00	122.84
2	A	1751[A]	SFC	O1-C1-C2	-2.48	119.83	124.31
2	A	1751[A]	SFC	C13-C2-C1	2.48	111.77	109.91
3	A	2751[B]	RFC	CBP-CAP-C9P	2.47	115.12	112.73
2	A	1751[A]	SFC	CBP-CAP-C9P	2.47	115.12	112.73
3	A	2751[B]	RFC	C7P-N8P-C9P	2.46	127.62	122.57
2	A	1751[A]	SFC	C7P-N8P-C9P	2.46	127.62	122.57

*Continued on next page...*

*Continued from previous page...*

Mol	Chain	Res	Type	Atoms	Z	Observed(°)	Ideal(°)
2	C	1753[A]	SFC	C6P-C7P-N8P	-2.45	106.59	111.87
3	C	2753[B]	RFC	C6P-C7P-N8P	-2.45	106.59	111.87
3	C	2753[B]	RFC	O1-C1-C2	-2.36	120.05	124.31
3	A	2751[B]	RFC	CEP-CBP-CAP	2.35	112.89	108.82
2	A	1751[A]	SFC	CEP-CBP-CAP	2.35	112.89	108.82
3	D	2754[B]	RFC	O6A-CCP-CBP	2.33	114.47	110.57
2	D	1754[A]	SFC	O6A-CCP-CBP	2.33	114.47	110.57
2	C	1753[A]	SFC	C8A-N9A-C4A	2.31	108.59	105.12
3	C	2753[B]	RFC	C8A-N9A-C4A	2.31	108.59	105.12
3	A	2751[B]	RFC	C6P-C7P-N8P	-2.30	106.91	111.87
2	A	1751[A]	SFC	C6P-C7P-N8P	-2.30	106.91	111.87
2	C	1753[A]	SFC	O1-C1-C2	-2.27	120.22	124.31
3	D	2754[B]	RFC	C6P-C7P-N8P	-2.26	106.99	111.87
2	D	1754[A]	SFC	C6P-C7P-N8P	-2.26	106.99	111.87
3	B	2752[B]	RFC	CEP-CBP-CAP	2.26	112.74	108.82
2	B	1752[A]	SFC	CEP-CBP-CAP	2.26	112.74	108.82
3	B	2752[B]	RFC	CDP-CBP-CAP	2.25	112.72	108.82
2	B	1752[A]	SFC	CDP-CBP-CAP	2.25	112.72	108.82
3	A	2751[B]	RFC	CDP-CBP-CCP	-2.25	105.51	108.76
2	A	1751[A]	SFC	CDP-CBP-CCP	-2.25	105.51	108.76
3	B	2752[B]	RFC	C2P-S1P-C1	2.21	110.17	101.31
3	B	2752[B]	RFC	CBP-CAP-C9P	2.12	114.78	112.73
2	B	1752[A]	SFC	CBP-CAP-C9P	2.12	114.78	112.73
3	B	2752[B]	RFC	C8A-N9A-C4A	2.11	108.29	105.12
2	B	1752[A]	SFC	C8A-N9A-C4A	2.11	108.29	105.12
2	C	1753[A]	SFC	CBP-CAP-C9P	2.09	114.76	112.73
3	C	2753[B]	RFC	CBP-CAP-C9P	2.09	114.76	112.73
3	D	2754[B]	RFC	CDP-CBP-CAP	2.06	112.39	108.82
2	D	1754[A]	SFC	CDP-CBP-CAP	2.06	112.39	108.82
3	D	2754[B]	RFC	CEP-CBP-CAP	2.05	112.38	108.82
2	D	1754[A]	SFC	CEP-CBP-CAP	2.05	112.38	108.82
3	D	2754[B]	RFC	C8A-N9A-C4A	2.04	108.19	105.12
2	D	1754[A]	SFC	C8A-N9A-C4A	2.04	108.19	105.12
3	B	2752[B]	RFC	CDP-CBP-CCP	-2.04	105.82	108.76
2	B	1752[A]	SFC	CDP-CBP-CCP	-2.04	105.82	108.76
3	D	2754[B]	RFC	C7-C9-C10	-2.04	108.76	114.58
3	A	2751[B]	RFC	O4B-C1B-N9A	2.03	110.33	108.44
2	A	1751[A]	SFC	O4B-C1B-N9A	2.03	110.33	108.44
3	A	2751[B]	RFC	O8A-P3B-O7A	2.02	115.48	107.61
2	A	1751[A]	SFC	O8A-P3B-O7A	2.02	115.48	107.61
2	D	1754[A]	SFC	C2P-C3P-N4P	-2.02	107.93	112.50
3	C	2753[B]	RFC	C13-C2-C1	2.00	111.42	109.91

There are no chirality outliers.

There are no torsion outliers.

There are no ring outliers.

## 5.7 Other polymers ⓘ

There are no such residues in this entry.

## 5.8 Polymer linkage issues

There are no chain breaks in this entry.

## 6 Fit of model and data ⓘ

### 6.1 Protein, DNA and RNA chains ⓘ

In the following table, the column labelled ‘#RSRZ> 2’ contains the number (and percentage) of RSRZ outliers, followed by percent RSRZ outliers for the chain as percentile scores relative to all X-ray entries and entries of similar resolution. The OWAB column contains the minimum, median, 95<sup>th</sup> percentile and maximum values of the occupancy-weighted average B-factor per residue. The column labelled ‘Q< 0.9’ lists the number of (and percentage) of residues with an average occupancy less than 0.9.

Mol	Chain	Analysed	<RSRZ>	#RSRZ>2	OWAB(Å <sup>2</sup> )	Q<0.9
1	A	354/360 (98%)	0.34	11 (3%) 47 43	21, 26, 41, 50	0
1	B	354/360 (98%)	0.32	10 (2%) 50 47	20, 26, 41, 49	0
1	C	354/360 (98%)	0.29	4 (1%) 77 76	20, 27, 42, 52	0
1	D	354/360 (98%)	0.31	13 (3%) 39 36	19, 27, 42, 51	0
All	All	1416/1440 (98%)	0.31	38 (2%) 52 48	19, 27, 42, 52	0

All (38) RSRZ outliers are listed below:

Mol	Chain	Res	Type	RSRZ
1	A	360	GLY	5.5
1	C	360	GLY	4.0
1	D	39	PRO	3.7
1	D	356	THR	3.6
1	D	350	ASP	3.5
1	A	39	PRO	3.4
1	A	77	ALA	3.3
1	B	360	GLY	3.2
1	D	360	GLY	3.0
1	B	73	LEU	2.7
1	B	353	ALA	2.6
1	D	349	ILE	2.6
1	B	350	ASP	2.6
1	D	69	LEU	2.5
1	B	69	LEU	2.5
1	D	65	GLN	2.4
1	A	64	ASP	2.4
1	C	39	PRO	2.4
1	B	359	ASP	2.3
1	A	359	ASP	2.3
1	C	38	ARG	2.3

*Continued on next page...*



*Continued from previous page...*

Mol	Chain	Res	Type	RSRZ
1	D	64	ASP	2.3
1	D	77	ALA	2.2
1	A	349	ILE	2.2
1	B	45	ILE	2.2
1	B	358	TRP	2.2
1	D	353	ALA	2.2
1	D	76	LYS	2.2
1	A	350	ASP	2.2
1	B	356	THR	2.1
1	A	62	LYS	2.1
1	A	292	ALA	2.1
1	B	347	ALA	2.0
1	C	347	ALA	2.0
1	D	2	ALA	2.0
1	A	283	ASP	2.0
1	D	66	GLY	2.0
1	A	38	ARG	2.0

## 6.2 Non-standard residues in protein, DNA, RNA chains ⓘ

There are no non-standard protein/DNA/RNA residues in this entry.

## 6.3 Carbohydrates ⓘ

There are no carbohydrates in this entry.

## 6.4 Ligands ⓘ

In the following table, the Atoms column lists the number of modelled atoms in the group and the number defined in the chemical component dictionary. LLDF column lists the quality of electron density of the group with respect to its neighbouring residues in protein, DNA or RNA chains. The B-factors column lists the minimum, median, 95<sup>th</sup> percentile and maximum values of B factors of atoms in the group. The column labelled 'Q< 0.9' lists the number of atoms with occupancy less than 0.9.

Mol	Type	Chain	Res	Atoms	RSR	LLDF	B-factors(Å <sup>2</sup> )	Q<0.9
2	SFC	D	1754[A]	62/62	0.25	2.95	43,67,83,83	62
3	RFC	D	2754[B]	62/62	0.24	2.76	46,67,83,83	62
3	RFC	B	2752[B]	62/62	0.22	2.56	49,64,79,80	62
3	RFC	C	2753[B]	62/62	0.22	2.30	51,69,79,81	62

*Continued on next page...*

*Continued from previous page...*

Mol	Type	Chain	Res	Atoms	RSR	LLDF	B-factors( $\text{\AA}^2$ )	Q<0.9
2	SFC	B	1752[A]	62/62	0.20	2.02	36,64,79,80	62
2	SFC	C	1753[A]	62/62	0.22	1.85	52,69,79,81	62
2	SFC	A	1751[A]	62/62	0.21	1.22	41,61,70,72	62
3	RFC	A	2751[B]	62/62	0.20	1.21	51,61,70,72	62

## 6.5 Other polymers ⓘ

There are no such residues in this entry.