



Full wwPDB X-ray Structure Validation Report (i)

Mar 1, 2014 – 12:32 AM GMT

PDB ID : 2GD2
Title : The 1,1-proton transfer reaction mechanism by alpha-methylacyl-CoA racemase is catalyzed by an aspartate/histidine pair and involves a smooth, methionine-rich surface for binding the fatty acyl moiety
Authors : Bhaumik, P.; Wierenga, R.K.
Deposited on : 2006-03-15
Resolution : 1.70 Å(reported)

This is a full wwPDB validation report for a publicly released PDB entry.
We welcome your comments at validation@mail.wwpdb.org
A user guide is available at <http://wwpdb.org/ValidationPDFNotes.html>

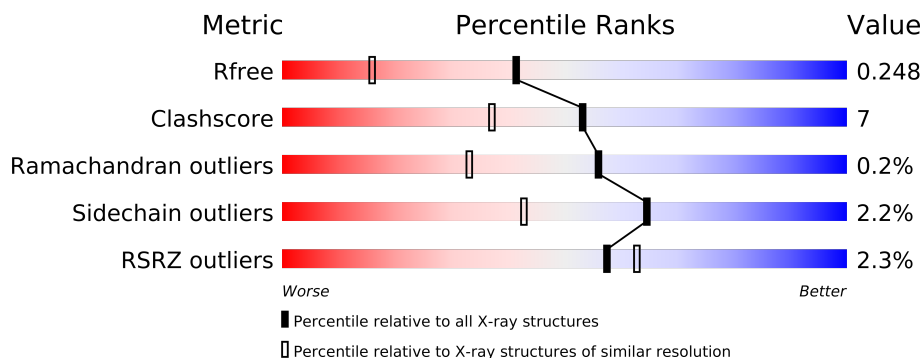
The following versions of software and data (see [references](#)) were used in the production of this report:

MolProbity : 4.02b-467
Mogul : 1.15 2013
Xtriage (Phenix) : dev-1323
EDS : stable22639
Percentile statistics : 21963
Refmac : 5.8.0049
CCP4 : 6.3.0 (Settle)
Ideal geometry (proteins) : Engh & Huber (2001)
Ideal geometry (DNA, RNA) : Parkinson et. al. (1996)
Validation Pipeline (wwPDB-VP) : stable22683

1 Overall quality at a glance

The reported resolution of this entry is 1.70 Å.

Percentile scores (ranging between 0-100) for global validation metrics of the entry are shown in the following graphic. The table shows the number of entries on which the scores are based.



Metric	Whole archive (#Entries)	Similar resolution (#Entries, resolution range(Å))
R_{free}	66092	2456 (1.70-1.70)
Clashscore	79885	2929 (1.70-1.70)
Ramachandran outliers	78287	2878 (1.70-1.70)
Sidechain outliers	78261	2878 (1.70-1.70)
RSRZ outliers	66119	2456 (1.70-1.70)

The table below summarises the geometric issues observed across the polymeric chains and their fit to the electron density. The red, orange, yellow and green segments on the lower bar indicate the fraction of residues that contain outliers for ≥ 3 , 2, 1 and 0 types of geometric quality criteria. The upper red bar (where present) indicates the fraction of residues that have poor fit to the electron density.

Mol	Chain	Length	Quality of chain
1	A	360	
1	B	360	
1	C	360	
1	D	360	

The following table lists non-polymeric compounds that are outliers for geometric or electron-density-fit criteria:

Mol	Type	Chain	Res	Geometry	Electron density
3	GOL	B	2308	-	X

2 Entry composition i

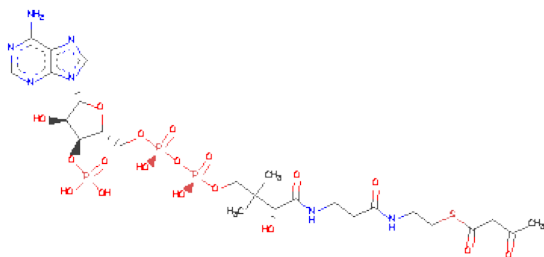
There are 4 unique types of molecules in this entry. The entry contains 12635 atoms, of which 0 are hydrogen and 0 are deuterium.

In the tables below, the ZeroOcc column contains the number of atoms modelled with zero occupancy, the AltConf column contains the number of residues with at least one atom in alternate conformation and the Trace column contains the number of residues modelled with at most 2 atoms.

- Molecule 1 is a protein called probable alpha-methylacyl-CoA racemase MCR.

Mol	Chain	Residues	Atoms					ZeroOcc	AltConf	Trace
1	A	354	Total	C	N	O	S	0	6	0
			2701	1693	488	504	16			
1	B	354	Total	C	N	O	S	0	11	0
			2718	1702	492	508	16			
1	C	354	Total	C	N	O	S	0	11	0
			2724	1705	494	509	16			
1	D	354	Total	C	N	O	S	0	10	0
			2722	1704	495	507	16			

- Molecule 2 is ACETOACETYL-COENZYME A (three-letter code: CAA) (formula: C₂₅H₄₀N₇O₁₈P₃S).



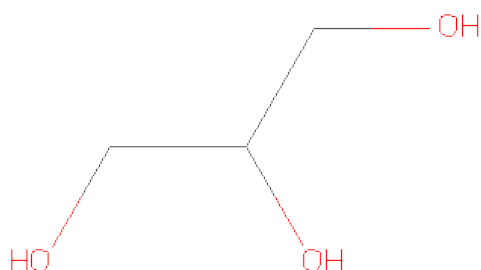
Mol	Chain	Residues	Atoms					ZeroOcc	AltConf
2	A	1	Total	C	N	O	P S	0	0
			54	25	7	18	3 1		
2	B	1	Total	C	N	O	P S	0	0
			48	21	7	16	3 1		

Continued on next page...

Continued from previous page...

Mol	Chain	Residues	Atoms						ZeroOcc	AltConf
2	C	1	Total	C	N	O	P	S	0	0
			48	21	7	16	3	1		
2	D	1	Total	C	N	O	P	S	0	0
			54	25	7	18	3	1		

- Molecule 3 is GLYCEROL (three-letter code: GOL) (formula: C₃H₈O₃).



Mol	Chain	Residues	Atoms			ZeroOcc	AltConf
3	C	1	Total	C	O	0	0
			6	3	3		
3	B	1	Total	C	O	0	0
			6	3	3		

- Molecule 4 is water.

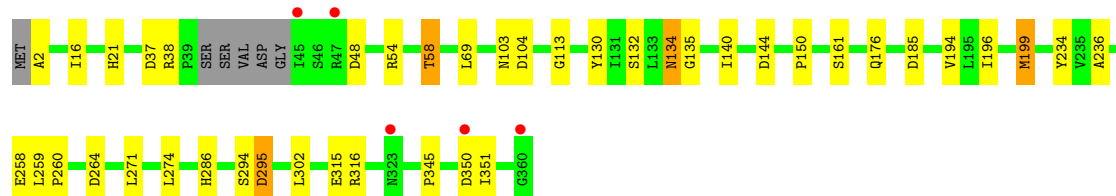
Mol	Chain	Residues	Atoms		ZeroOcc	AltConf
4	A	394	Total	O	0	0
			394	394		
4	B	388	Total	O	0	0
			388	388		
4	C	372	Total	O	0	0
			372	372		
4	D	400	Total	O	0	0
			400	400		

3 Residue-property plots

These plots are drawn for all protein, RNA and DNA chains in the entry. The first graphic for a chain summarises the proportions of errors displayed in the second graphic. The second graphic shows the sequence view annotated by issues in geometry and electron density. Residues are color-coded according to the number of geometric quality criteria for which they contain at least one outlier: green = 0, yellow = 1, orange = 2 and red = 3 or more. A red dot above a residue indicates a poor fit to the electron density ($RSRZ > 2$). Stretches of 2 or more consecutive residues without any outlier are shown as a green connector. Residues present in the sample, but not in the model, are shown in grey.

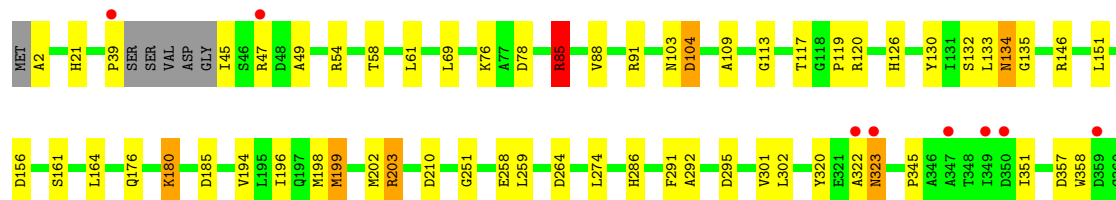
- Molecule 1: probable alpha-methylacyl-CoA racemase MCR

Chain A: 



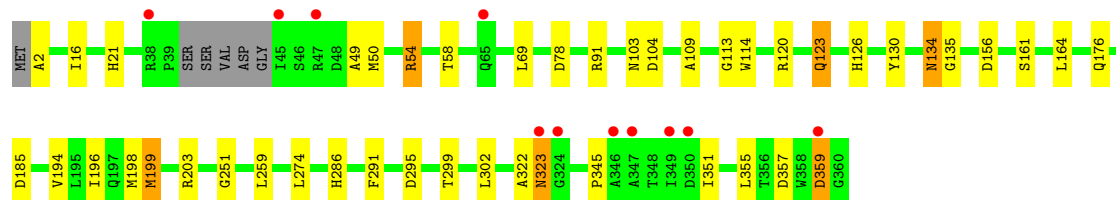
- Molecule 1: probable alpha-methylacyl-CoA racemase MCR

Chain B: 



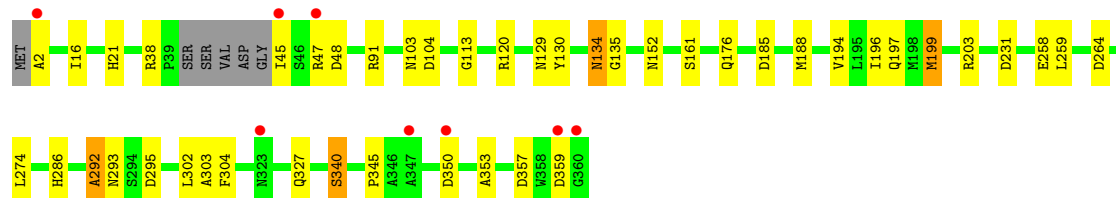
- Molecule 1: probable alpha-methylacyl-CoA racemase MCR

Chain C: 



- Molecule 1: probable alpha-methylacyl-CoA racemase MCR

Chain D: 



4 Data and refinement statistics

Property	Value	Source
Space group	C 1 2 1	Depositor
Cell constants a, b, c, α , β , γ	181.12Å 80.03Å 118.62Å 90.00° 91.58° 90.00°	Depositor
Resolution (Å)	19.80 – 1.70 19.80 – 1.70	Depositor EDS
% Data completeness (in resolution range)	91.3 (19.80-1.70) 91.3 (19.80-1.70)	Depositor EDS
R_{merge}	0.09	Depositor
R_{sym}	0.09	Depositor
$\langle I/\sigma(I) \rangle$ ¹	2.48 (at 1.70Å)	Xtriage
Refinement program	REFMAC 5	Depositor
R, R_{free}	0.208 , 0.250 0.210 , 0.248	Depositor DCC
R_{free} test set	8538 reflections (5.29%)	DCC
Wilson B-factor (Å ²)	15.5	Xtriage
Anisotropy	0.113	Xtriage
Bulk solvent k_{sol} (e/Å ³), B_{sol} (Å ²)	0.37 , 45.0	EDS
Estimated twinning fraction	0.166 for -h,-k,l	Xtriage
L-test for twinning	$\langle L \rangle = 0.47$, $\langle L^2 \rangle = 0.30$	Xtriage
Outliers	1 of 169869 reflections (0.001%)	Xtriage
F_o, F_c correlation	0.95	EDS
Total number of atoms	12635	wwPDB-VP
Average B, all atoms (Å ²)	27.0	wwPDB-VP

Xtriage's analysis on translational NCS is as follows: *The analyses of the Patterson function reveals a significant off-origin peak that is 61.78 % of the origin peak, indicating pseudo translational symmetry. The chance of finding a peak of this or larger height randomly in a structure without pseudo translational symmetry is equal to 1.2435e-05. The detected translational NCS is most likely also responsible for the elevated intensity ratio.*

¹Intensities estimated from amplitudes.

5 Model quality

5.1 Standard geometry

Bond lengths and bond angles in the following residue types are not validated in this section: GOL, CAA

The Z score for a bond length (or angle) is the number of standard deviations the observed value is removed from the expected value. A bond length (or angle) with $|Z| > 5$ is considered an outlier worth inspection. RMSZ is the root-mean-square of all Z scores of the bond lengths (or angles).

Mol	Chain	Bond lengths		Bond angles	
		RMSZ	$\# Z > 5$	RMSZ	$\# Z > 5$
1	A	0.84	0/2792	0.93	8/3795 (0.2%)
1	B	0.84	0/2818	0.97	12/3830 (0.3%)
1	C	0.85	0/2822	0.92	7/3835 (0.2%)
1	D	0.88	0/2812	0.93	9/3822 (0.2%)
All	All	0.85	0/11244	0.94	36/15282 (0.2%)

There are no bond length outliers.

All (36) bond angle outliers are listed below:

Mol	Chain	Res	Type	Atoms	Z	Observed(°)	Ideal(°)
1	B	85	ARG	NE-CZ-NH2	-10.66	114.97	120.30
1	A	185	ASP	CB-CG-OD2	10.37	127.63	118.30
1	A	295	ASP	CB-CG-OD2	9.06	126.45	118.30
1	B	295	ASP	CB-CG-OD2	8.76	126.19	118.30
1	C	185	ASP	CB-CG-OD2	8.41	125.86	118.30
1	D	295	ASP	CB-CG-OD2	8.32	125.79	118.30
1	C	295	ASP	CB-CG-OD2	7.71	125.24	118.30
1	D	185	ASP	CB-CG-OD2	7.59	125.14	118.30
1	B	85	ARG	NE-CZ-NH1	7.45	124.02	120.30
1	B	185	ASP	CB-CG-OD2	7.18	124.76	118.30
1	B	357	ASP	CB-CG-OD2	6.92	124.53	118.30
1	C	104	ASP	CB-CG-OD2	6.89	124.50	118.30
1	B	104	ASP	CB-CG-OD2	6.86	124.48	118.30
1	A	264	ASP	CB-CG-OD2	6.39	124.06	118.30
1	B	91	ARG	NE-CZ-NH2	-6.23	117.19	120.30
1	A	104	ASP	CB-CG-OD2	6.14	123.83	118.30
1	B	78	ASP	CB-CG-OD2	5.95	123.66	118.30
1	B	264	ASP	CB-CG-OD2	5.95	123.66	118.30
1	C	357	ASP	CB-CG-OD2	5.90	123.61	118.30
1	C	359	ASP	CB-CG-OD2	5.53	123.28	118.30

Continued on next page...

Continued from previous page...

Mol	Chain	Res	Type	Atoms	Z	Observed(°)	Ideal(°)
1	D	264	ASP	CB-CG-OD2	5.53	123.27	118.30
1	D	231	ASP	CB-CG-OD2	5.46	123.22	118.30
1	A	144	ASP	CB-CG-OD2	5.45	123.20	118.30
1	A	350	ASP	CB-CG-OD2	5.42	123.18	118.30
1	D	292[A]	ALA	N-CA-C	5.34	125.41	111.00
1	D	292[B]	ALA	N-CA-C	5.34	125.41	111.00
1	B	292[A]	ALA	N-CA-C	5.29	125.29	111.00
1	B	292[B]	ALA	N-CA-C	5.29	125.29	111.00
1	D	357	ASP	CB-CG-OD2	5.24	123.01	118.30
1	B	54	ARG	NE-CZ-NH2	-5.22	117.69	120.30
1	A	37	ASP	CB-CG-OD2	5.21	122.99	118.30
1	C	54	ARG	CB-CA-C	-5.15	100.10	110.40
1	A	54	ARG	NE-CZ-NH1	5.11	122.85	120.30
1	C	78	ASP	CB-CG-OD2	5.11	122.89	118.30
1	D	120	ARG	NE-CZ-NH1	5.04	122.82	120.30
1	D	104	ASP	CB-CG-OD2	5.02	122.82	118.30

There are no chirality outliers.

There are no planarity outliers.

5.2 Close contacts ⓘ

In the following table, the Non-H and H(model) columns list the number of non-hydrogen atoms and hydrogen atoms in the chain respectively. The H(added) column lists the number of hydrogens added by MolProbity. The Clashes column lists the number of clashes within the asymmetric unit, and the number in parentheses is this value normalized per 1000 atoms of the molecule in the chain. The Symm-Clashes column gives symmetry related clashes, in the same way as for the Clashes column.

Mol	Chain	Non-H	H(model)	H(added)	Clashes	Symm-Clashes
1	A	2701	0	2641	31	0
1	B	2718	0	2651	52	0
1	C	2724	0	2662	43	0
1	D	2722	0	2660	35	0
2	A	54	0	36	3	0
2	B	48	0	31	8	0
2	C	48	0	31	5	0
2	D	54	0	36	3	0
3	B	6	0	8	11	0
3	C	6	0	8	4	0
4	A	394	0	0	14	0

Continued on next page...

Continued from previous page...

Mol	Chain	Non-H	H(model)	H(added)	Clashes	Symm-Clashes
4	B	388	0	0	6	0
4	C	372	0	0	13	1
4	D	400	0	0	10	1
All	All	12635	0	10764	151	1

Clashscore is defined as the number of clashes calculated for the entry per 1000 atoms (including hydrogens) of the entry. The overall clashscore for this entry is 7.

All (151) close contacts within the same asymmetric unit are listed below.

Atom-1	Atom-2	Distance(Å)	Clash(Å)
1:D:2:ALA:HB1	4:D:2014:HOH:O	1.56	1.05
2:B:1752:CAA:S1P	3:B:2308:GOL:H31	2.12	0.89
1:C:322[B]:ALA:O	1:C:323[B]:ASN:O	1.94	0.86
1:C:176:GLN:HG3	4:D:1997:HOH:O	1.80	0.82
1:D:38:ARG:HG3	1:D:38:ARG:HH11	1.46	0.79
1:C:322[B]:ALA:O	1:C:323[B]:ASN:C	2.22	0.78
1:D:259:LEU:HD22	1:D:274:LEU:HD13	1.67	0.77
2:D:1754:CAA:H142	4:D:2152:HOH:O	1.87	0.73
1:B:322[A]:ALA:O	1:B:323[A]:ASN:C	2.26	0.72
2:B:1752:CAA:S1P	3:B:2308:GOL:C3	2.77	0.72
1:B:85:ARG:CD	2:B:1752:CAA:O1A	2.37	0.72
1:B:320:TYR:CE1	1:B:322[B]:ALA:HB2	2.25	0.71
1:D:259:LEU:CD2	1:D:274:LEU:HD13	2.21	0.71
1:B:286:HIS:HD2	4:B:2377:HOH:O	1.74	0.69
1:B:85:ARG:HD2	2:B:1752:CAA:O1A	1.93	0.69
1:B:126:HIS:HB3	3:B:2308:GOL:H32	1.75	0.68
2:A:1751:CAA:S1P	2:A:1751:CAA:H4'3	2.35	0.67
1:C:299:THR:HG22	4:C:2422:HOH:O	1.93	0.67
1:C:345:PRO:HB3	4:C:2392:HOH:O	1.95	0.66
1:B:126:HIS:ND1	3:B:2308:GOL:C3	2.59	0.65
1:A:345:PRO:HD3	4:A:2123:HOH:O	1.96	0.65
1:B:126:HIS:ND1	3:B:2308:GOL:H32	2.11	0.65
1:A:286:HIS:HE1	4:A:1818:HOH:O	1.79	0.65
1:C:91:ARG:NE	4:C:2420:HOH:O	1.94	0.65
4:A:2013:HOH:O	1:B:176:GLN:HG2	1.96	0.64
1:A:48:ASP:O	4:A:2104:HOH:O	2.14	0.64
1:B:85:ARG:HD3	2:B:1752:CAA:O1A	1.98	0.63
1:B:322[B]:ALA:O	1:B:323[B]:ASN:C	2.36	0.63
1:A:58:THR:HG21	4:A:2032:HOH:O	1.98	0.62
2:A:1751:CAA:S1P	2:A:1751:CAA:C4	2.88	0.61
1:A:140:ILE:HD12	1:A:150:PRO:HG3	1.81	0.61
1:C:91:ARG:HH12	2:C:1753:CAA:P3B	2.24	0.61

Continued on next page...

Continued from previous page...

Atom-1	Atom-2	Distance(Å)	Clash(Å)
1:A:21:HIS:HD2	1:A:161:SER:OG	1.83	0.61
1:C:299:THR:HG21	1:D:129:ASN:HB3	1.82	0.60
1:B:345:PRO:HD3	4:B:2617:HOH:O	2.02	0.60
1:B:258:GLU:HG3	4:B:2627:HOH:O	2.02	0.60
1:B:259:LEU:HD22	1:B:274:LEU:HD13	1.84	0.59
1:B:126:HIS:CB	3:B:2308:GOL:H32	2.32	0.58
1:A:259:LEU:HD22	1:A:274:LEU:HD13	1.85	0.58
1:C:198:MET:HE1	1:D:152:ASN:HD21	1.69	0.57
1:D:345:PRO:HG2	4:D:2000:HOH:O	2.04	0.57
4:A:2003:HOH:O	1:B:119:PRO:HD3	2.04	0.56
1:C:126:HIS:ND1	3:C:2307:GOL:H2	2.20	0.56
1:A:294:SER:HA	4:A:2075:HOH:O	2.05	0.56
2:C:1753:CAA:S1P	3:C:2307:GOL:O3	2.51	0.56
1:B:156:ASP:OD2	3:B:2308:GOL:H2	2.07	0.55
1:A:176:GLN:NE2	1:B:176:GLN:HG2	2.21	0.55
1:D:38:ARG:HG3	1:D:38:ARG:NH1	2.20	0.55
1:B:126:HIS:ND1	3:B:2308:GOL:H31	2.21	0.55
4:A:1773:HOH:O	1:B:146:ARG:HB2	2.07	0.54
1:D:91:ARG:NH1	2:D:1754:CAA:O7A	2.41	0.53
4:C:2633:HOH:O	1:D:16:ILE:HB	2.07	0.53
2:C:1753:CAA:S1P	3:C:2307:GOL:O2	2.50	0.53
1:D:48:ASP:N	4:D:2000:HOH:O	2.41	0.53
1:B:69:LEU:HD13	1:B:351:ILE:HG21	1.90	0.53
1:A:16:ILE:HG23	4:A:1890:HOH:O	2.08	0.53
1:D:286:HIS:HE1	4:D:1799:HOH:O	1.92	0.53
1:C:21:HIS:HD2	1:C:161:SER:OG	1.92	0.53
1:A:113:GLY:HA3	1:A:130:TYR:CZ	2.44	0.52
1:D:134:ASN:C	1:D:134:ASN:HD22	2.12	0.52
1:B:39:PRO:HA	1:B:58:THR:OG1	2.09	0.52
1:D:21:HIS:HD2	1:D:161:SER:OG	1.92	0.52
1:A:302:LEU:O	1:B:135:GLY:HA2	2.10	0.52
1:A:316:ARG:HD2	1:B:117:THR:O	2.10	0.51
1:D:47:ARG:NH1	4:D:2072:HOH:O	2.44	0.51
1:B:120:ARG:NE	1:B:133:LEU:HD11	2.25	0.51
1:C:345:PRO:HD3	4:C:2541:HOH:O	2.11	0.51
1:A:134:ASN:C	1:A:134:ASN:HD22	2.12	0.51
1:D:113:GLY:HA3	1:D:130:TYR:CZ	2.46	0.50
1:B:21:HIS:HD2	1:B:161:SER:OG	1.94	0.50
1:D:2:ALA:N	1:D:340:SER:HG	2.10	0.50
1:C:49:ALA:HB2	4:C:2606:HOH:O	2.11	0.50
1:D:258:GLU:HG3	4:D:1934:HOH:O	2.11	0.50
4:C:2572:HOH:O	1:D:327:GLN:HB3	2.12	0.50

Continued on next page...

Continued from previous page...

Atom-1	Atom-2	Distance(Å)	Clash(Å)
1:A:258:GLU:HG3	4:A:1953:HOH:O	2.11	0.49
1:B:134:ASN:HD22	1:B:134:ASN:C	2.16	0.49
1:C:91:ARG:CZ	2:C:1753:CAA:O7A	2.58	0.49
1:C:194:VAL:O	1:D:21:HIS:HE1	1.96	0.49
1:A:260:PRO:HG2	1:A:271:LEU:HB2	1.94	0.49
1:B:47:ARG:NH2	4:B:2654:HOH:O	2.46	0.48
1:B:126:HIS:CG	3:B:2308:GOL:H32	2.48	0.48
1:C:135:GLY:HA2	1:D:302:LEU:O	2.14	0.48
1:A:21:HIS:CD2	1:A:161:SER:OG	2.67	0.48
1:C:302:LEU:O	1:D:135:GLY:HA2	2.14	0.48
1:C:109:ALA:HB1	1:C:164:LEU:HD11	1.96	0.48
1:C:113:GLY:HA3	1:C:130:TYR:CZ	2.49	0.48
2:D:1754:CAA:C4	2:D:1754:CAA:S1P	3.02	0.47
1:C:120:ARG:HH11	1:C:123[A]:GLN:HE22	1.62	0.47
1:A:16:ILE:HG22	2:A:1751:CAA:H4'3	1.96	0.47
1:A:194:VAL:O	1:B:21:HIS:HE1	1.96	0.47
1:B:286:HIS:HE1	4:B:2438:HOH:O	1.96	0.47
1:A:315:GLU:HG3	4:A:2003:HOH:O	2.14	0.47
1:C:134:ASN:HD22	1:C:134:ASN:C	2.17	0.47
1:C:156:ASP:OD2	3:C:2307:GOL:H32	2.15	0.47
1:C:113:GLY:HA3	1:C:130:TYR:CE1	2.50	0.47
1:A:113:GLY:HA3	1:A:130:TYR:CE1	2.50	0.47
1:D:176:GLN:NE2	4:D:1981:HOH:O	2.49	0.46
1:D:113:GLY:HA3	1:D:130:TYR:CE1	2.51	0.46
1:A:135:GLY:HA2	1:B:302:LEU:O	2.16	0.46
1:A:132[B]:SER:OG	1:B:301:VAL:HA	2.15	0.46
1:A:295:ASP:CG	1:B:85:ARG:HH22	2.18	0.46
1:C:198:MET:HE1	1:D:152:ASN:ND2	2.30	0.46
1:C:203[B]:ARG:HG2	4:C:2554:HOH:O	2.16	0.46
1:A:196:ILE:HG12	1:A:199:MET:HB2	1.97	0.45
1:C:198:MET:CE	1:D:152:ASN:HD21	2.28	0.45
1:B:88:VAL:HG13	2:B:1752:CAA:H3B	1.99	0.45
1:C:114:TRP:HE1	1:C:123[A]:GLN:HG2	1.81	0.45
4:A:1857:HOH:O	1:B:49:ALA:HB1	2.15	0.45
1:C:21:HIS:HE1	1:D:194:VAL:O	2.00	0.45
1:C:286:HIS:HE1	4:C:2461:HOH:O	1.99	0.45
1:C:50:MET:CA	1:D:197:GLN:HE22	2.30	0.44
1:A:234:TYR:HD1	4:A:1773:HOH:O	1.99	0.44
1:B:2:ALA:HA	4:B:2540:HOH:O	2.17	0.44
1:C:299:THR:CG2	4:C:2422:HOH:O	2.58	0.44
1:B:113:GLY:HA3	1:B:130:TYR:CZ	2.52	0.44
1:C:91:ARG:NH2	4:C:2420:HOH:O	2.50	0.44

Continued on next page...

Continued from previous page...

Atom-1	Atom-2	Distance(Å)	Clash(Å)
1:C:355:LEU:HA	1:C:355:LEU:HD23	1.88	0.44
1:C:50:MET:N	1:D:197:GLN:HE22	2.15	0.44
1:B:109:ALA:HB1	1:B:164:LEU:HD11	2.00	0.44
1:C:259:LEU:HD22	1:C:274:LEU:HD13	2.00	0.44
1:A:38:ARG:HG3	1:A:38:ARG:HH11	1.83	0.43
1:B:322[B]:ALA:O	1:B:323[B]:ASN:O	2.36	0.43
1:B:203[A]:ARG:HD3	1:B:210:ASP:OD1	2.18	0.43
1:D:196:ILE:HG12	1:D:199:MET:HB2	1.99	0.43
1:D:292[B]:ALA:O	1:D:293[B]:ASN:HB2	2.17	0.43
1:D:303:ALA:O	1:D:304:PHE:C	2.56	0.43
1:C:50:MET:HA	1:D:197:GLN:HE22	1.84	0.43
1:C:69:LEU:HD13	1:C:351:ILE:HG21	2.01	0.43
1:C:16:ILE:HB	4:D:2154:HOH:O	2.19	0.43
1:C:2:ALA:HB1	4:C:2551:HOH:O	2.18	0.43
1:A:21:HIS:HE1	1:B:194:VAL:O	2.02	0.43
1:C:16:ILE:HD13	4:C:2474:HOH:O	2.18	0.42
1:A:69:LEU:HD13	1:A:351:ILE:HG21	2.01	0.42
2:B:1752:CAA:H22	3:B:2308:GOL:O3	2.20	0.42
1:C:196:ILE:HG12	1:C:199:MET:HB2	2.01	0.42
1:A:2:ALA:HA	4:A:2131:HOH:O	2.19	0.42
1:D:350:ASP:O	1:D:353:ALA:HB3	2.19	0.42
1:B:198:MET:HG2	1:B:202:MET:HE2	2.02	0.42
1:C:251:GLY:HA3	1:C:291:PHE:CE2	2.54	0.42
1:B:113:GLY:HA3	1:B:130:TYR:CE1	2.55	0.41
1:B:104:ASP:OD2	1:B:180:LYS:HE2	2.20	0.41
1:B:76:LYS:HE2	1:B:358:TRP:O	2.20	0.41
1:B:196:ILE:HG12	1:B:199:MET:HB2	2.01	0.41
1:B:259:LEU:CD2	1:B:274:LEU:HD13	2.48	0.41
1:B:45:ILE:O	1:B:45:ILE:HG23	2.21	0.41
2:B:1752:CAA:S1P	3:B:2308:GOL:O3	2.79	0.41
1:D:113:GLY:CA	1:D:188:MET:HE3	2.51	0.41
1:A:236:ALA:HB2	1:B:132[B]:SER:OG	2.20	0.40
1:B:251:GLY:HA3	1:B:291:PHE:CE2	2.56	0.40
1:C:91:ARG:NH2	2:C:1753:CAA:O7A	2.55	0.40
1:B:61:LEU:HD23	1:B:61:LEU:HA	1.86	0.40

All (1) symmetry-related close contacts are listed below. The label for Atom-2 includes the symmetry operator and encoded unit-cell translations to be applied.

Atom-1	Atom-2	Distance(Å)	Clash(Å)
4:C:2554:HOH:O	4:D:1998:HOH:O[4_656]	2.18	0.02

5.3 Torsion angles

5.3.1 Protein backbone ⓘ

In the following table, the Percentiles column shows the percent Ramachandran outliers of the chain as a percentile score with respect to all X-ray entries followed by that with respect to entries of similar resolution. The Analysed column shows the number of residues for which the backbone conformation was analysed, and the total number of residues.

Mol	Chain	Analysed	Favoured	Allowed	Outliers	Percentiles	
1	A	356/360 (99%)	345 (97%)	11 (3%)	0	100	100
1	B	361/360 (100%)	347 (96%)	11 (3%)	3 (1%)	27	8
1	C	361/360 (100%)	347 (96%)	12 (3%)	2 (1%)	33	13
1	D	360/360 (100%)	345 (96%)	15 (4%)	0	100	100
All	All	1438/1440 (100%)	1384 (96%)	49 (3%)	5 (0%)	56	27

All (5) Ramachandran outliers are listed below:

Mol	Chain	Res	Type
1	C	323[A]	ASN
1	C	323[B]	ASN
1	B	323[A]	ASN
1	B	323[B]	ASN
1	B	151	LEU

5.3.2 Protein sidechains ⓘ

In the following table, the Percentiles column shows the percent sidechain outliers of the chain as a percentile score with respect to all X-ray entries followed by that with respect to entries of similar resolution. The Analysed column shows the number of residues for which the sidechain conformation was analysed, and the total number of residues.

Mol	Chain	Analysed	Rotameric	Outliers	Percentiles	
1	A	276/275 (100%)	272 (99%)	4 (1%)	78	62
1	B	277/275 (101%)	270 (98%)	7 (2%)	60	37
1	C	278/275 (101%)	270 (97%)	8 (3%)	55	30
1	D	276/275 (100%)	268 (97%)	8 (3%)	55	30
All	All	1107/1100 (101%)	1080 (98%)	27 (2%)	64	39

All (27) residues with a non-rotameric sidechain are listed below:

Mol	Chain	Res	Type
1	A	58	THR
1	A	103	ASN
1	A	134	ASN
1	A	199	MET
1	B	85	ARG
1	B	103	ASN
1	B	134	ASN
1	B	180	LYS
1	B	199	MET
1	B	203[A]	ARG
1	B	203[B]	ARG
1	C	54	ARG
1	C	58	THR
1	C	103	ASN
1	C	123[A]	GLN
1	C	123[B]	GLN
1	C	134	ASN
1	C	199	MET
1	C	359	ASP
1	D	45	ILE
1	D	103	ASN
1	D	134	ASN
1	D	199	MET
1	D	203[A]	ARG
1	D	203[B]	ARG
1	D	340	SER
1	D	359	ASP

Some sidechains can be flipped to improve hydrogen bonding and reduce clashes. All (21) such sidechains are listed below:

Mol	Chain	Res	Type
1	A	21	HIS
1	A	103	ASN
1	A	123	GLN
1	A	134	ASN
1	A	176	GLN
1	A	286	HIS
1	B	21	HIS
1	B	103	ASN
1	B	134	ASN
1	B	263	ASN
1	B	286	HIS
1	C	21	HIS

Continued on next page...

Continued from previous page...

Mol	Chain	Res	Type
1	C	103	ASN
1	C	134	ASN
1	C	176	GLN
1	C	286	HIS
1	D	21	HIS
1	D	103	ASN
1	D	134	ASN
1	D	176	GLN
1	D	286	HIS

5.3.3 RNA ⓘ

There are no RNA chains in this entry.

5.4 Non-standard residues in protein, DNA, RNA chains ⓘ

There are no non-standard protein/DNA/RNA residues in this entry.

5.5 Carbohydrates ⓘ

There are no carbohydrates in this entry.

5.6 Ligand geometry ⓘ

6 ligands are modelled in this entry.

In the following table, the Counts columns list the number of bonds (or angles) for which Mogul statistics could be retrieved, the number of bonds (or angles) that are observed in the model and the number of bonds (or angles) that are defined in the chemical component dictionary. The Link column lists molecule types, if any, to which the group is linked. The Z score for a bond length (or angle) is the number of standard deviations the observed value is removed from the expected value. A bond length (or angle) with $|Z| > 2$ is considered an outlier worth inspection. RMSZ is the root-mean-square of all Z scores of the bond lengths (or angles).

Mol	Type	Chain	Res	Link	Bond lengths			Bond angles		
					Counts	RMSZ	$\# Z > 2$	Counts	RMSZ	$\# Z > 2$
2	CAA	A	1751	1	56,56,56	1.26	5 (8%)	83,83,83	2.44	17 (20%)
2	CAA	B	1752	-	50,50,56	1.05	2 (4%)	75,75,83	1.85	15 (20%)
3	GOL	B	2308	-	5,5,5	0.55	0	5,5,5	0.65	0
2	CAA	C	1753	1	50,50,56	1.05	3 (6%)	75,75,83	1.96	16 (21%)

Mol	Type	Chain	Res	Link	Bond lengths			Bond angles		
					Counts	RMSZ	# Z > 2	Counts	RMSZ	# Z > 2
3	GOL	C	2307	-	5,5,5	0.41	0	5,5,5	0.67	0
2	CAA	D	1754	-	56,56,56	1.24	6 (10%)	83,83,83	2.59	18 (21%)

In the following table, the Chirals column lists the number of chiral outliers, the number of chiral centers analysed, the number of these observed in the model and the number defined in the chemical component dictionary. Similar counts are reported in the Torsion and Rings columns. '-' means no outliers of that kind were identified.

Mol	Type	Chain	Res	Link	Chirals	Torsions	Rings
2	CAA	A	1751	1	-	0/55/71/71	0/1/3/3
2	CAA	B	1752	-	-	0/48/64/71	0/1/3/3
3	GOL	B	2308	-	-	0/4/4/4	0/0/0/0
2	CAA	C	1753	1	-	0/48/64/71	0/1/3/3
3	GOL	C	2307	-	-	0/4/4/4	0/0/0/0
2	CAA	D	1754	-	-	2/55/71/71	0/1/3/3

All (16) bond length outliers are listed below:

Mol	Chain	Res	Type	Atoms	Z	Observed(Å)	Ideal(Å)
2	A	1751	CAA	C4A-N9A	-3.62	1.32	1.37
2	A	1751	CAA	C1-S1P	-3.46	1.69	1.76
2	D	1754	CAA	C1-S1P	-3.11	1.69	1.76
2	D	1754	CAA	C4A-N9A	-3.11	1.33	1.37
2	D	1754	CAA	P3B-O7A	2.76	1.60	1.51
2	B	1752	CAA	C4A-N9A	-2.71	1.33	1.37
2	B	1752	CAA	P3B-O7A	2.66	1.60	1.51
2	C	1753	CAA	C4A-N9A	-2.45	1.34	1.37
2	A	1751	CAA	P3B-O7A	2.36	1.59	1.51
2	A	1751	CAA	P2A-O4A	2.35	1.60	1.51
2	C	1753	CAA	P3B-O7A	2.32	1.59	1.51
2	D	1754	CAA	OAP-CAP	2.29	1.46	1.42
2	C	1753	CAA	C8A-N7A	2.25	1.39	1.34
2	D	1754	CAA	C2B-C1B	-2.18	1.50	1.53
2	A	1751	CAA	CBP-CAP	-2.12	1.53	1.55
2	D	1754	CAA	C8A-N7A	2.03	1.38	1.34

All (66) bond angle outliers are listed below:

Mol	Chain	Res	Type	Atoms	Z	Observed(°)	Ideal(°)
2	D	1754	CAA	C2-C1-S1P	15.57	130.31	113.43
2	A	1751	CAA	C2-C1-S1P	13.95	128.55	113.43
2	A	1751	CAA	O1-C1-S1P	-7.91	114.52	122.85

Continued on next page...

Continued from previous page...

Mol	Chain	Res	Type	Atoms	Z	Observed(°)	Ideal(°)
2	D	1754	CAA	O1-C1-C2	-7.09	111.67	122.75
2	B	1752	CAA	N3A-C2A-N1A	-7.05	122.82	128.71
2	C	1753	CAA	N3A-C2A-N1A	-6.73	123.08	128.71
2	A	1751	CAA	N3A-C2A-N1A	-6.09	123.62	128.71
2	D	1754	CAA	N3A-C2A-N1A	-5.46	124.14	128.71
2	D	1754	CAA	C1B-N9A-C4A	-5.42	117.27	126.64
2	D	1754	CAA	O4B-C1B-N9A	5.26	113.33	108.44
2	A	1751	CAA	C1B-N9A-C4A	-5.16	117.71	126.64
2	B	1752	CAA	O4B-C1B-N9A	4.86	112.97	108.44
2	C	1753	CAA	O4B-C1B-N9A	4.85	112.95	108.44
2	B	1752	CAA	C1B-N9A-C4A	-4.76	118.42	126.64
2	C	1753	CAA	C1B-N9A-C4A	-4.68	118.55	126.64
2	D	1754	CAA	O1-C1-S1P	-4.58	118.02	122.85
2	C	1753	CAA	CBP-CAP-C9P	4.58	117.17	112.73
2	A	1751	CAA	O4B-C1B-N9A	4.46	112.59	108.44
2	C	1753	CAA	O6A-CCP-CBP	-4.12	103.67	110.57
2	C	1753	CAA	CDP-CBP-CAP	4.04	115.83	108.82
2	C	1753	CAA	C8A-N9A-C1B	3.99	134.25	126.38
2	D	1754	CAA	C8A-N9A-C1B	3.81	133.89	126.38
2	A	1751	CAA	O1-C1-C2	-3.72	116.93	122.75
2	B	1752	CAA	C8A-N9A-C1B	3.67	133.60	126.38
2	C	1753	CAA	C3P-C2P-S1P	-3.66	109.72	112.53
2	D	1754	CAA	O2B-C2B-C3B	3.65	121.95	111.20
2	C	1753	CAA	CDP-CBP-CCP	-3.61	103.56	108.76
2	A	1751	CAA	C8A-N9A-C1B	3.47	133.22	126.38
2	A	1751	CAA	O5P-C5P-C6P	-3.21	115.53	121.92
2	C	1753	CAA	C2B-C1B-N9A	3.21	121.50	113.27
2	D	1754	CAA	N3A-C4A-N9A	3.16	131.14	125.43
2	D	1754	CAA	O3B-C3B-C4B	-3.10	97.94	110.06
2	B	1752	CAA	O2B-C2B-C1B	3.09	120.58	111.23
2	D	1754	CAA	O5P-C5P-C6P	-3.07	115.82	121.92
2	A	1751	CAA	O2B-C2B-C3B	3.04	120.14	111.20
2	B	1752	CAA	N3A-C4A-N9A	2.93	130.72	125.43
2	A	1751	CAA	N3A-C4A-N9A	2.85	130.58	125.43
2	B	1752	CAA	CBP-CAP-C9P	2.81	115.45	112.73
2	B	1752	CAA	O6A-CCP-CBP	-2.69	106.06	110.57
2	A	1751	CAA	C8A-N9A-C4A	2.69	108.95	106.90
2	D	1754	CAA	C6P-C5P-N4P	2.69	121.39	116.50
2	B	1752	CAA	O5P-C5P-C6P	-2.62	116.71	121.92
2	B	1752	CAA	O3B-C3B-C4B	-2.60	99.90	110.06
2	B	1752	CAA	O3B-C3B-C2B	-2.58	101.44	111.54
2	B	1752	CAA	CDP-CBP-CAP	2.57	113.28	108.82

Continued on next page...

Continued from previous page...

Mol	Chain	Res	Type	Atoms	Z	Observed(°)	Ideal(°)
2	D	1754	CAA	N6A-C6A-N1A	2.57	124.41	119.36
2	A	1751	CAA	C2B-C1B-N9A	2.44	119.52	113.27
2	B	1752	CAA	O3B-P3B-O7A	2.43	113.59	106.79
2	C	1753	CAA	N3A-C4A-N9A	2.43	129.81	125.43
2	A	1751	CAA	C6P-C5P-N4P	2.42	120.91	116.50
2	D	1754	CAA	CEP-CBP-CCP	2.41	112.23	108.76
2	B	1752	CAA	C3B-C2B-C1B	2.40	105.68	99.98
2	C	1753	CAA	O5P-C5P-C6P	-2.40	117.15	121.92
2	A	1751	CAA	O5A-P2A-O3A	2.39	116.49	105.14
2	D	1754	CAA	C3B-C2B-C1B	2.38	105.62	99.98
2	D	1754	CAA	C8A-N9A-C4A	2.37	108.71	106.90
2	A	1751	CAA	O3B-P3B-O7A	2.35	113.35	106.79
2	B	1752	CAA	CDP-CBP-CCP	-2.30	105.44	108.76
2	C	1753	CAA	O3B-C3B-C2B	-2.27	102.67	111.54
2	A	1751	CAA	O4B-C1B-C2B	2.21	110.15	106.77
2	A	1751	CAA	CDP-CBP-CAP	2.19	112.62	108.82
2	D	1754	CAA	C4-C3-C2	2.13	124.15	117.49
2	C	1753	CAA	O3B-C3B-C4B	-2.10	101.86	110.06
2	D	1754	CAA	O3B-C3B-C2B	-2.07	103.42	111.54
2	C	1753	CAA	C4A-C5A-N7A	-2.05	107.76	109.52
2	C	1753	CAA	O2B-C2B-C3B	2.05	117.23	111.20

There are no chirality outliers.

All (2) torsion outliers are listed below:

Mol	Chain	Res	Type	Atoms
2	D	1754	CAA	O3-C3-C2-C1
2	D	1754	CAA	C4-C3-C2-C1

There are no ring outliers.

5.7 Other polymers ⓘ

There are no such residues in this entry.

5.8 Polymer linkage issues

There are no chain breaks in this entry.

6 Fit of model and data ⓘ

6.1 Protein, DNA and RNA chains ⓘ

In the following table, the column labelled ‘#RSRZ> 2’ contains the number (and percentage) of RSRZ outliers, followed by percent RSRZ outliers for the chain as percentile scores relative to all X-ray entries and entries of similar resolution. The OWAB column contains the minimum, median, 95th percentile and maximum values of the occupancy-weighted average B-factor per residue. The column labelled ‘Q< 0.9’ lists the number of (and percentage) of residues with an average occupancy less than 0.9.

Mol	Chain	Analysed	<RSRZ>	#RSRZ>2	OWAB(Å ²)	Q<0.9
1	A	354/360 (98%)	-0.10	5 (1%) 72 78	17, 25, 36, 46	0
1	B	354/360 (98%)	-0.04	8 (2%) 57 63	19, 26, 38, 47	0
1	C	354/360 (98%)	-0.07	11 (3%) 47 52	17, 23, 36, 49	0
1	D	354/360 (98%)	-0.13	8 (2%) 57 63	15, 24, 36, 44	0
All	All	1416/1440 (98%)	-0.09	32 (2%) 57 63	15, 24, 37, 49	0

All (32) RSRZ outliers are listed below:

Mol	Chain	Res	Type	RSRZ
1	C	349	ILE	4.5
1	C	45	ILE	3.5
1	D	350	ASP	3.4
1	A	323	ASN	3.4
1	B	322[A]	ALA	3.4
1	B	350	ASP	3.4
1	C	323[A]	ASN	3.2
1	C	359	ASP	3.2
1	D	360	GLY	3.1
1	B	323[A]	ASN	3.1
1	A	360	GLY	3.1
1	A	45	ILE	3.0
1	C	47	ARG	2.9
1	C	347	ALA	2.8
1	D	323[A]	ASN	2.8
1	B	47	ARG	2.7
1	A	47	ARG	2.7
1	A	350	ASP	2.7
1	B	359	ASP	2.7
1	D	347	ALA	2.4
1	C	38	ARG	2.4

Continued on next page...

Continued from previous page...

Mol	Chain	Res	Type	RSRZ
1	C	350	ASP	2.4
1	D	2	ALA	2.3
1	D	45	ILE	2.3
1	D	359	ASP	2.2
1	B	347	ALA	2.2
1	B	39	PRO	2.2
1	C	65	GLN	2.1
1	D	47	ARG	2.1
1	C	346	ALA	2.0
1	C	324[A]	GLY	2.0
1	B	349	ILE	2.0

6.2 Non-standard residues in protein, DNA, RNA chains ⓘ

There are no non-standard protein/DNA/RNA residues in this entry.

6.3 Carbohydrates ⓘ

There are no carbohydrates in this entry.

6.4 Ligands ⓘ

In the following table, the Atoms column lists the number of modelled atoms in the group and the number defined in the chemical component dictionary. LLDF column lists the quality of electron density of the group with respect to its neighbouring residues in protein, DNA or RNA chains. The B-factors column lists the minimum, median, 95th percentile and maximum values of B factors of atoms in the group. The column labelled 'Q < 0.9' lists the number of atoms with occupancy less than 0.9.

Mol	Type	Chain	Res	Atoms	RSR	LLDF	B-factors(Å ²)	Q<0.9
3	GOL	B	2308	6/6	0.16	2.98	40,43,45,46	0
3	GOL	C	2307	6/6	0.12	1.22	42,44,45,46	0
2	CAA	D	1754	54/54	0.08	-0.35	19,28,35,42	1
2	CAA	A	1751	54/54	0.08	-0.38	19,28,33,39	1
2	CAA	B	1752	48/54	0.08	-0.45	20,28,36,37	0
2	CAA	C	1753	48/54	0.07	-0.64	16,26,34,37	0

6.5 Other polymers ⓘ

There are no such residues in this entry.