



Full wwPDB X-ray Structure Validation Report

Feb 27, 2014 – 09:25 PM GMT

PDB ID : 2GDD
Title : Human beta II tryptase with inhibitor CRA-27592
Authors : Somoza, J.R.
Deposited on : 2006-03-15
Resolution : 2.35 Å(reported)

This is a full wwPDB validation report for a publicly released PDB entry.
We welcome your comments at validation@mail.wwpdb.org
A user guide is available at <http://wwpdb.org/ValidationPDFNotes.html>

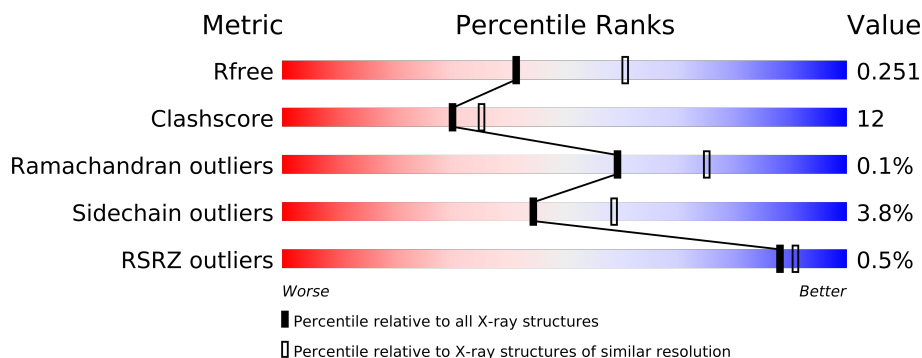
The following versions of software and data (see [references](#)) were used in the production of this report:

MolProbity : 4.02b-467
Mogul : 1.15 2013
Xtriage (Phenix) : dev-1323
EDS : stable22639
Percentile statistics : 21963
Refmac : 5.8.0049
CCP4 : 6.3.0 (Settle)
Ideal geometry (proteins) : Engh & Huber (2001)
Ideal geometry (DNA, RNA) : Parkinson et. al. (1996)
Validation Pipeline (wwPDB-VP) : stable22683

1 Overall quality at a glance

The reported resolution of this entry is 2.35 Å.

Percentile scores (ranging between 0-100) for global validation metrics of the entry are shown in the following graphic. The table shows the number of entries on which the scores are based.



Metric	Whole archive (#Entries)	Similar resolution (#Entries, resolution range(Å))
R_{free}	66092	3327 (2.40-2.32)
Clashscore	79885	1064 (2.38-2.34)
Ramachandran outliers	78287	1048 (2.38-2.34)
Sidechain outliers	78261	1049 (2.38-2.34)
RSRZ outliers	66119	3330 (2.40-2.32)

The table below summarises the geometric issues observed across the polymeric chains and their fit to the electron density. The red, orange, yellow and green segments on the lower bar indicate the fraction of residues that contain outliers for ≥ 3 , 2, 1 and 0 types of geometric quality criteria. The upper red bar (where present) indicates the fraction of residues that have poor fit to the electron density.

Mol	Chain	Length	Quality of chain
1	A	245	
1	B	245	
1	C	245	
1	D	245	

2 Entry composition i

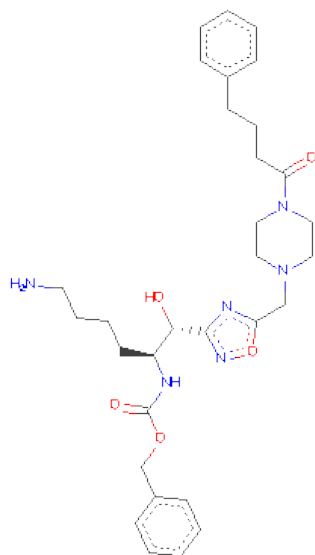
There are 3 unique types of molecules in this entry. The entry contains 7984 atoms, of which 0 are hydrogen and 0 are deuterium.

In the tables below, the ZeroOcc column contains the number of atoms modelled with zero occupancy, the AltConf column contains the number of residues with at least one atom in alternate conformation and the Trace column contains the number of residues modelled with at most 2 atoms.

- Molecule 1 is a protein called Trypsin beta-2.

Mol	Chain	Residues	Atoms					ZeroOcc	AltConf	Trace
1	A	243	Total	C	N	O	S	0	0	0
			1920	1230	338	340	12			
1	B	243	Total	C	N	O	S	0	0	0
			1920	1230	338	340	12			
1	C	243	Total	C	N	O	S	0	0	0
			1920	1230	338	340	12			
1	D	243	Total	C	N	O	S	0	0	0
			1920	1230	338	340	12			

- Molecule 2 is BENZYL {(1S)-5-AMINO-1-[(S)-HYDROXY(5-{[4-(4-PHENYLBUTANOYL)PIPERAZIN-1-YL]METHYL}-1,2,4-OXADIAZOL-3-YL)METHYL]PENTYL}CARBAMATE (three-letter code: 5AM) (formula: C₃₁H₄₂N₆O₅).



Mol	Chain	Residues	Atoms				ZeroOcc	AltConf
2	A	1	Total	C	N	O	0	0
			42	31	6	5		

Continued on next page...

Continued from previous page...

Mol	Chain	Residues	Atoms				ZeroOcc	AltConf
2	B	1	Total	C	N	O	0	0
			42	31	6	5		
2	C	1	Total	C	N	O	0	0
			42	31	6	5		
2	D	1	Total	C	N	O	0	0
			42	31	6	5		

- Molecule 3 is water.

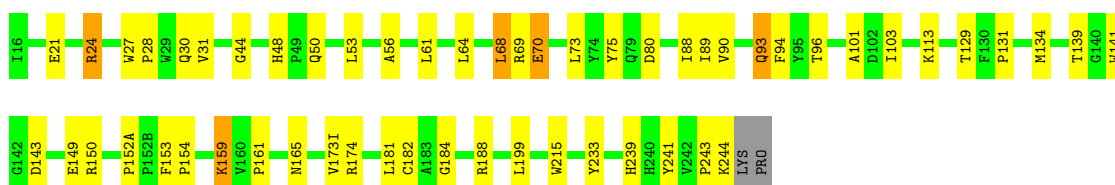
Mol	Chain	Residues	Atoms		ZeroOcc	AltConf
3	A	43	Total	O	0	0
			43	43		
3	B	25	Total	O	0	0
			25	25		
3	C	44	Total	O	0	0
			44	44		
3	D	24	Total	O	0	0
			24	24		

3 Residue-property plots

These plots are drawn for all protein, RNA and DNA chains in the entry. The first graphic for a chain summarises the proportions of errors displayed in the second graphic. The second graphic shows the sequence view annotated by issues in geometry and electron density. Residues are color-coded according to the number of geometric quality criteria for which they contain at least one outlier: green = 0, yellow = 1, orange = 2 and red = 3 or more. A red dot above a residue indicates a poor fit to the electron density ($RSRZ > 2$). Stretches of 2 or more consecutive residues without any outlier are shown as a green connector. Residues present in the sample, but not in the model, are shown in grey.

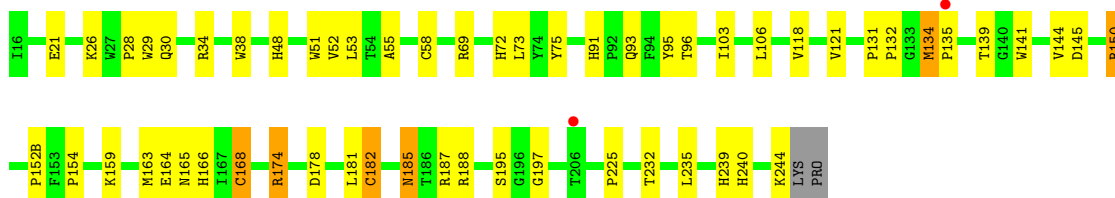
- Molecule 1: Tryptase beta-2

Chain A: 



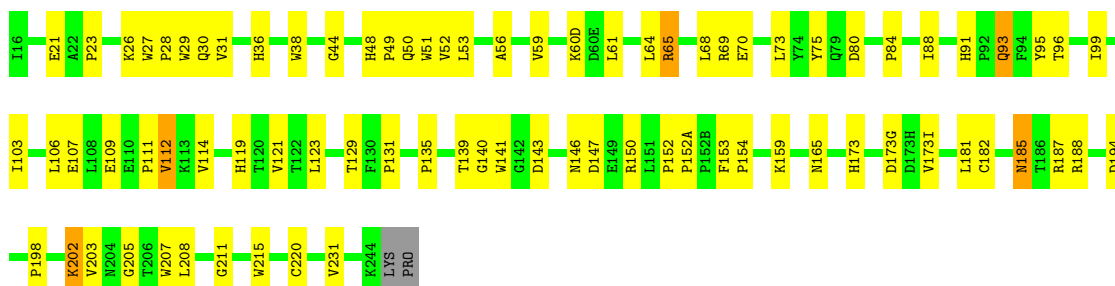
- Molecule 1: Tryptase beta-2

Chain B: 



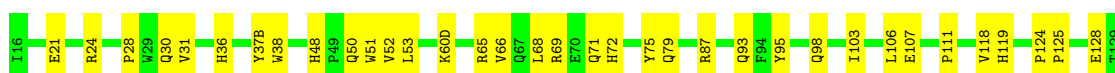
- Molecule 1: Tryptase beta-2

Chain C: 



- Molecule 1: Tryptase beta-2

Chain D: 





4 Data and refinement statistics

Property	Value	Source
Space group	P 31	Depositor
Cell constants a, b, c, α , β , γ	78.02Å 78.02Å 163.98Å 90.00° 90.00° 120.00°	Depositor
Resolution (Å)	19.70 – 2.35 19.74 – 2.35	Depositor EDS
% Data completeness (in resolution range)	93.4 (19.70-2.35) 93.5 (19.74-2.35)	Depositor EDS
R_{merge}	0.14	Depositor
R_{sym}	(Not available)	Depositor
$\langle I/\sigma(I) \rangle$ ¹	2.36 (at 2.35Å)	Xtriage
Refinement program	CNS	Depositor
R, R_{free}	0.215 , 0.254 0.214 , 0.251	Depositor DCC
R_{free} test set	4368 reflections (10.06%)	DCC
Wilson B-factor (Å ²)	24.6	Xtriage
Anisotropy	0.304	Xtriage
Bulk solvent k_{sol} (e/Å ³), B_{sol} (Å ²)	0.35 , 12.4	EDS
Estimated twinning fraction	0.007 for -h,-k,l 0.478 for h,-h-k,-l 0.010 for -k,-h,-l	Xtriage
L-test for twinning	$\langle L \rangle = 0.51$, $\langle L^2 \rangle = 0.35$	Xtriage
Outliers	0 of 46395 reflections	Xtriage
F_o, F_c correlation	0.93	EDS
Total number of atoms	7984	wwPDB-VP
Average B, all atoms (Å ²)	28.0	wwPDB-VP

Xtriage's analysis on translational NCS is as follows: *The largest off-origin peak in the Patterson function is 4.08% of the height of the origin peak. No significant pseudotranslation is detected.*

¹Intensities estimated from amplitudes.

5 Model quality i

5.1 Standard geometry i

Bond lengths and bond angles in the following residue types are not validated in this section: 5AM

The Z score for a bond length (or angle) is the number of standard deviations the observed value is removed from the expected value. A bond length (or angle) with $|Z| > 5$ is considered an outlier worth inspection. RMSZ is the root-mean-square of all Z scores of the bond lengths (or angles).

Mol	Chain	Bond lengths		Bond angles	
		RMSZ	# Z >5	RMSZ	# Z >5
1	A	0.37	0/1985	0.65	0/2720
1	B	0.36	0/1985	0.65	0/2720
1	C	0.36	0/1985	0.64	0/2720
1	D	0.37	0/1985	0.76	3/2720 (0.1%)
All	All	0.37	0/7940	0.68	3/10880 (0.0%)

Chiral center outliers are detected by calculating the chiral volume of a chiral center and verifying if the center is modelled as a planar moiety or with the opposite hand. A planarity outlier is detected by checking planarity of atoms in a peptide group, atoms in a mainchain group or atoms of a sidechain that are expected to be planar.

Mol	Chain	#Chirality outliers	#Planarity outliers
1	C	0	1
1	D	0	1
All	All	0	2

There are no bond length outliers.

All (3) bond angle outliers are listed below:

Mol	Chain	Res	Type	Atoms	Z	Observed(°)	Ideal(°)
1	D	87	ARG	NE-CZ-NH1	-15.45	112.58	120.30
1	D	87	ARG	NE-CZ-NH2	13.73	127.16	120.30
1	D	181	LEU	CA-CB-CG	5.43	127.78	115.30

There are no chirality outliers.

All (2) planarity outliers are listed below:

Mol	Chain	Res	Type	Group
1	C	95	TYR	Sidechain

Continued on next page...

Continued from previous page...

Mol	Chain	Res	Type	Group
1	D	95	TYR	Sidechain

5.2 Close contacts ⓘ

In the following table, the Non-H and H(model) columns list the number of non-hydrogen atoms and hydrogen atoms in the chain respectively. The H(added) column lists the number of hydrogens added by MolProbity. The Clashes column lists the number of clashes within the asymmetric unit, and the number in parentheses is this value normalized per 1000 atoms of the molecule in the chain. The Symm-Clashes column gives symmetry related clashes, in the same way as for the Clashes column.

Mol	Chain	Non-H	H(model)	H(added)	Clashes	Symm-Clashes
1	A	1920	0	1854	43	0
1	B	1920	0	1854	45	0
1	C	1920	0	1854	56	0
1	D	1920	0	1854	48	0
2	A	42	0	41	1	0
2	B	42	0	41	0	0
2	C	42	0	41	1	0
2	D	42	0	41	0	0
3	A	43	0	0	1	0
3	B	25	0	0	2	0
3	C	44	0	0	1	0
3	D	24	0	0	3	0
All	All	7984	0	7580	185	0

Clashscore is defined as the number of clashes calculated for the entry per 1000 atoms (including hydrogens) of the entry. The overall clashscore for this entry is 12.

All (185) close contacts within the same asymmetric unit are listed below.

Atom-1	Atom-2	Distance(Å)	Clash(Å)
1:B:239:HIS:HB3	1:B:244:LYS:HE2	1.44	0.99
1:A:24:ARG:HH11	1:A:24:ARG:HB3	1.27	0.99
1:B:185:ASN:ND2	1:B:188:ARG:H	1.69	0.90
1:C:61:LEU:HD21	1:C:88:ILE:HG13	1.54	0.87
1:C:135:PRO:HA	3:C:1029:HOH:O	1.76	0.84
1:B:163:MET:HB2	1:B:182:CYS:SG	2.18	0.82
1:B:91:HIS:HD2	1:B:93:GLN:H	1.26	0.82
1:B:21:GLU:HG3	1:B:154:PRO:HB2	1.65	0.78
1:B:174:ARG:HG2	1:B:174:ARG:HH11	1.49	0.78
1:A:93:GLN:HA	1:A:93:GLN:HE21	1.50	0.76

Continued on next page...

Continued from previous page...

Atom-1	Atom-2	Distance(Å)	Clash(Å)
1:C:129:THR:HG23	1:C:131:PRO:HD3	1.69	0.74
1:A:24:ARG:NH1	1:A:24:ARG:HB3	2.01	0.74
1:C:203:VAL:HG21	1:C:208:LEU:HD12	1.69	0.73
1:A:61:LEU:HD21	1:A:88:ILE:HG12	1.71	0.72
1:C:202:LYS:HE3	1:C:205:GLY:HA2	1.71	0.72
1:A:61:LEU:CD2	1:A:88:ILE:HG12	2.20	0.72
1:B:134:MET:SD	1:B:135:PRO:HD2	2.30	0.70
1:C:146:ASN:HD21	1:C:220:CYS:H	1.37	0.70
1:A:129:THR:HG23	1:A:131:PRO:HD3	1.72	0.70
1:A:21:GLU:HG3	1:A:154:PRO:HB2	1.74	0.70
1:D:164:GLU:O	1:D:167:ILE:HG22	1.93	0.69
1:B:174:ARG:HG2	1:B:174:ARG:NH1	2.05	0.69
1:D:181:LEU:HD12	1:D:182:CYS:N	2.10	0.67
1:B:185:ASN:HD21	1:B:188:ARG:H	1.43	0.67
1:C:114:VAL:HG13	1:C:119:HIS:HB3	1.76	0.65
1:D:181:LEU:HD12	1:D:181:LEU:C	2.16	0.65
1:A:159:LYS:O	1:A:188:ARG:HD3	1.98	0.64
1:C:143:ASP:OD1	1:C:150:ARG:HD3	1.98	0.63
1:D:69:ARG:HH22	1:D:71:GLN:NE2	1.97	0.63
1:C:61:LEU:CD2	1:C:88:ILE:HG13	2.27	0.62
1:A:53:LEU:HD11	1:A:103:ILE:HD11	1.82	0.61
1:C:185:ASN:ND2	1:C:188:ARG:H	1.99	0.61
1:A:64:LEU:CD2	1:A:88:ILE:HD11	2.30	0.60
1:D:145:ASP:HB3	1:D:149:GLU:HG2	1.83	0.59
1:A:48:HIS:HD2	1:A:50:GLN:H	1.49	0.59
1:B:93:GLN:HA	1:C:173(I):VAL:HG21	1.83	0.58
1:B:118:VAL:HG23	1:B:118:VAL:O	2.04	0.58
1:B:69:ARG:HD2	3:B:1013:HOH:O	2.03	0.58
1:A:31:VAL:HG22	1:A:44:GLY:C	2.24	0.58
1:B:174:ARG:NH1	3:B:1002:HOH:O	2.37	0.58
1:B:181:LEU:HD23	1:B:182:CYS:N	2.18	0.58
1:D:48:HIS:HD2	1:D:50:GLN:H	1.52	0.58
1:D:167:ILE:O	1:D:167:ILE:HD13	2.04	0.57
1:D:53:LEU:HD11	1:D:103:ILE:HD11	1.86	0.57
1:A:131:PRO:HD2	1:A:134:MET:CE	2.35	0.57
1:C:31:VAL:HG22	1:C:44:GLY:C	2.25	0.57
1:C:150:ARG:HH11	1:C:150:ARG:HG2	1.69	0.56
1:D:48:HIS:CD2	1:D:50:GLN:H	2.23	0.56
1:C:185:ASN:HD22	1:C:185:ASN:C	2.09	0.56
1:C:150:ARG:NH1	1:C:150:ARG:HG2	2.21	0.56
1:C:48:HIS:HD2	1:C:50:GLN:H	1.52	0.56
1:A:70:GLU:OE1	1:A:80:ASP:OD1	2.25	0.55

Continued on next page...

Continued from previous page...

Atom-1	Atom-2	Distance(Å)	Clash(Å)
1:D:30:GLN:NE2	1:D:139:THR:OG1	2.40	0.54
1:C:114:VAL:HG13	1:C:119:HIS:CB	2.38	0.54
1:D:150:ARG:HG2	3:D:1009:HOH:O	2.07	0.54
1:B:30:GLN:NE2	1:B:139:THR:OG1	2.40	0.53
1:A:48:HIS:CD2	1:A:50:GLN:H	2.27	0.53
1:C:140:GLY:HA3	1:C:194:ASP:OD1	2.09	0.53
1:A:56:ALA:HB2	1:A:103:ILE:O	2.09	0.53
1:D:72:HIS:HB3	1:D:152(B):PRO:O	2.09	0.52
1:A:96:THR:HG21	1:D:98:GLN:HG2	1.91	0.52
1:C:52:VAL:HB	1:C:106:LEU:HB2	1.91	0.52
1:C:173:HIS:CD2	1:C:173(G):ASP:HA	2.44	0.52
1:C:152:PRO:HB3	1:D:37(B):TYR:CD1	2.45	0.51
1:B:174:ARG:HH22	1:B:178:ASP:CG	2.14	0.51
1:B:53:LEU:HD11	1:B:103:ILE:HD11	1.92	0.51
1:A:27:TRP:N	1:A:28:PRO:HD3	2.25	0.51
1:C:36:HIS:HD2	1:C:38:TRP:CZ2	2.29	0.50
1:B:185:ASN:HD22	1:B:185:ASN:C	2.14	0.50
1:B:185:ASN:HD21	1:B:188:ARG:N	2.06	0.50
1:B:240:HIS:ND1	1:B:240:HIS:O	2.44	0.50
1:C:59:VAL:O	1:C:60(D):LYS:HE2	2.12	0.50
1:D:69:ARG:HB3	1:D:118:VAL:HG22	1.92	0.50
1:A:131:PRO:HD2	1:A:134:MET:HE2	1.93	0.50
1:B:185:ASN:HD22	1:B:188:ARG:H	1.51	0.49
1:B:91:HIS:CD2	1:B:93:GLN:H	2.18	0.49
1:B:131:PRO:O	1:B:134:MET:HB2	2.12	0.49
1:C:50:GLN:HG2	1:C:111:PRO:HA	1.94	0.49
1:D:60(D):LYS:HE3	3:D:1003:HOH:O	2.11	0.49
1:D:159:LYS:O	1:D:188:ARG:HD3	2.12	0.49
1:C:202:LYS:HG2	1:C:207:TRP:CE2	2.48	0.49
1:C:84:PRO:HB2	1:C:109:GLU:OE2	2.11	0.49
1:B:144:VAL:O	1:B:145:ASP:HB2	2.13	0.49
1:B:52:VAL:HB	1:B:106:LEU:HB2	1.95	0.48
1:C:181:LEU:HD23	1:C:182:CYS:N	2.28	0.48
1:C:185:ASN:ND2	1:C:187:ARG:H	2.11	0.48
1:C:185:ASN:HD22	1:C:188:ARG:H	1.60	0.48
1:D:232:THR:HA	1:D:235:LEU:HD22	1.95	0.48
1:B:168:CYS:SG	1:B:225:PRO:CG	3.02	0.48
1:D:211:GLY:HA2	1:D:231:VAL:HG23	1.94	0.48
1:C:53:LEU:HD11	1:C:103:ILE:HD11	1.96	0.48
1:D:50:GLN:OE1	1:D:111:PRO:HG3	2.14	0.47
1:B:164:GLU:OE2	1:B:166:HIS:HB3	2.14	0.47
1:C:21:GLU:HG3	1:C:154:PRO:HB2	1.96	0.47

Continued on next page...

Continued from previous page...

Atom-1	Atom-2	Distance(Å)	Clash(Å)
1:C:147:ASP:C	1:C:150:ARG:HH12	2.18	0.47
1:D:124:PRO:O	1:D:235:LEU:HD21	2.14	0.47
1:A:56:ALA:HB1	1:A:90:VAL:HG13	1.97	0.47
1:C:73:LEU:HG	1:C:141:TRP:CD1	2.50	0.47
1:C:75:TYR:CE2	1:D:75:TYR:HB2	2.49	0.47
1:D:52:VAL:HB	1:D:106:LEU:HB2	1.95	0.47
1:A:24:ARG:HH11	1:A:24:ARG:CB	2.11	0.47
1:D:181:LEU:CD1	1:D:182:CYS:N	2.77	0.47
1:C:29:TRP:CG	1:C:121:VAL:HB	2.50	0.47
1:C:51:TRP:CZ3	1:C:107:GLU:HB2	2.50	0.46
1:C:211:GLY:HA2	1:C:231:VAL:HG23	1.97	0.46
1:C:28:PRO:HG3	1:C:119:HIS:CE1	2.50	0.46
1:D:21:GLU:HG3	1:D:154:PRO:HB2	1.98	0.46
1:D:48:HIS:HB3	1:D:51:TRP:HB2	1.97	0.46
1:D:152(A):PRO:HG3	1:D:153:PHE:CZ	2.51	0.46
1:D:31:VAL:CG1	1:D:66:VAL:HG13	2.46	0.46
1:B:48:HIS:HB3	1:B:51:TRP:HB2	1.98	0.46
1:C:135:PRO:HB3	1:C:159:LYS:HD2	1.98	0.46
1:C:56:ALA:HB2	1:C:103:ILE:O	2.16	0.45
1:D:36:HIS:HB2	1:D:38:TRP:CH2	2.51	0.45
1:B:55:ALA:O	1:B:58:CYS:HB2	2.16	0.45
1:A:30:GLN:NE2	1:A:139:THR:OG1	2.49	0.45
1:B:29:TRP:CG	1:B:121:VAL:HB	2.51	0.45
1:A:64:LEU:HD23	1:A:88:ILE:HD11	1.99	0.45
1:A:48:HIS:CE1	1:A:243:PRO:HG2	2.52	0.45
1:C:48:HIS:CD2	1:C:50:GLN:H	2.32	0.45
1:B:187:ARG:HH11	1:B:187:ARG:HG3	1.81	0.45
1:D:240:HIS:ND1	1:D:240:HIS:O	2.49	0.45
1:B:72:HIS:HB3	1:B:152(B):PRO:O	2.17	0.45
1:D:24:ARG:HA	1:D:71:GLN:NE2	2.32	0.45
1:B:150:ARG:H	1:B:150:ARG:HD2	1.81	0.45
1:D:181:LEU:CD1	1:D:181:LEU:C	2.84	0.45
1:D:79:GLN:HA	1:D:79:GLN:NE2	2.32	0.45
1:A:181:LEU:HD23	1:A:181:LEU:C	2.37	0.45
1:C:70:GLU:OE1	1:C:80:ASP:OD1	2.35	0.44
1:C:215:TRP:HA	2:C:997:5AM:H161	1.99	0.44
1:D:137:TRP:CZ2	1:D:159:LYS:HE3	2.52	0.44
1:A:68:LEU:O	1:A:69:ARG:C	2.55	0.44
1:A:181:LEU:HD23	1:A:182:CYS:N	2.33	0.43
1:A:161:PRO:HD2	1:A:184:GLY:HA2	2.00	0.43
1:C:152(A):PRO:HG3	1:C:153:PHE:CZ	2.54	0.43
1:C:30:GLN:NE2	1:C:139:THR:OG1	2.51	0.43

Continued on next page...

Continued from previous page...

Atom-1	Atom-2	Distance(Å)	Clash(Å)
1:C:91:HIS:CE1	1:C:93:GLN:HB2	2.54	0.43
1:C:203:VAL:CG2	1:C:208:LEU:HD12	2.45	0.43
1:D:28:PRO:HG3	1:D:119:HIS:CE1	2.53	0.43
1:A:215:TRP:HA	2:A:999:5AM:H161	2.00	0.43
1:B:168:CYS:SG	1:B:225:PRO:HG2	2.59	0.43
1:B:185:ASN:ND2	1:B:188:ARG:N	2.50	0.43
1:D:164:GLU:OE2	1:D:166:HIS:HB3	2.19	0.43
1:C:50:GLN:HG2	1:C:111:PRO:CA	2.49	0.43
1:A:93:GLN:HA	1:A:93:GLN:NE2	2.28	0.42
1:D:142:GLY:HA2	1:D:193:GLY:HA3	2.00	0.42
1:C:49:PRO:O	1:C:112:VAL:HG13	2.20	0.42
1:A:24:ARG:HG3	3:A:1041:HOH:O	2.18	0.42
1:A:61:LEU:HD23	1:A:88:ILE:HG12	1.99	0.42
1:A:73:LEU:HG	1:A:141:TRP:CD1	2.55	0.42
1:B:195:SER:C	1:B:197:GLY:H	2.22	0.42
1:C:27:TRP:CD1	1:C:139:THR:HG21	2.55	0.42
1:A:233:TYR:CD1	1:A:233:TYR:O	2.73	0.42
1:A:131:PRO:HD2	1:A:134:MET:HE1	1.99	0.42
1:D:205:GLY:O	1:D:206:THR:HG23	2.20	0.42
1:A:93:GLN:NE2	1:D:173(I):VAL:HG22	2.35	0.42
1:D:124:PRO:HB3	1:D:130:PHE:HZ	1.85	0.42
1:D:31:VAL:HG22	1:D:68:LEU:HD23	2.02	0.42
1:A:152(A):PRO:HA	1:A:153:PHE:N	2.35	0.42
1:A:239:HIS:CG	1:A:244:LYS:HE2	2.55	0.42
1:B:159:LYS:O	1:B:188:ARG:HD3	2.19	0.41
1:C:29:TRP:CD2	1:C:121:VAL:HB	2.55	0.41
1:B:232:THR:HA	1:B:235:LEU:HG	2.02	0.41
1:D:51:TRP:CZ3	1:D:107:GLU:HB2	2.56	0.41
1:A:75:TYR:HB2	1:B:75:TYR:CE1	2.55	0.41
1:B:95:TYR:CD2	1:B:96:THR:HG23	2.55	0.41
1:A:173(I):VAL:HG21	1:D:93:GLN:HA	2.02	0.41
1:D:60(D):LYS:CE	3:D:1003:HOH:O	2.69	0.41
1:B:29:TRP:CD2	1:B:121:VAL:HB	2.56	0.41
1:A:94:PHE:HB2	1:A:101:ALA:O	2.21	0.41
1:B:73:LEU:HG	1:B:141:TRP:CD1	2.55	0.41
1:C:96:THR:OG1	1:C:99:ILE:HG13	2.21	0.41
1:D:125:PRO:HD2	1:D:128:GLU:HB2	2.02	0.41
1:B:28:PRO:HA	1:B:69:ARG:HG3	2.02	0.41
1:B:34:ARG:HD2	1:B:38:TRP:O	2.21	0.41
1:B:131:PRO:HA	1:B:132:PRO:HD3	1.87	0.40
1:D:174:ARG:HB3	1:D:174:ARG:HH21	1.86	0.40
1:C:23:PRO:HG2	1:C:26:LYS:HG3	2.03	0.40

Continued on next page...

Continued from previous page...

Atom-1	Atom-2	Distance(Å)	Clash(Å)
1:C:68:LEU:O	1:C:69:ARG:C	2.59	0.40
1:D:51:TRP:CH2	1:D:107:GLU:HB2	2.56	0.40
1:A:143:ASP:OD2	1:A:150:ARG:NH1	2.51	0.40
1:C:64:LEU:O	1:C:65:ARG:HG2	2.21	0.40
1:D:38:TRP:CZ3	1:D:65:ARG:HG2	2.56	0.40
1:C:30:GLN:HE22	1:C:198:PRO:HD2	1.86	0.40
1:A:89:ILE:HD13	1:A:241:TYR:CD1	2.56	0.40

There are no symmetry-related clashes.

5.3 Torsion angles

5.3.1 Protein backbone ⓘ

In the following table, the Percentiles column shows the percent Ramachandran outliers of the chain as a percentile score with respect to all X-ray entries followed by that with respect to entries of similar resolution. The Analysed column shows the number of residues for which the backbone conformation was analysed, and the total number of residues.

Mol	Chain	Analysed	Favoured	Allowed	Outliers	Percentiles	
1	A	241/245 (98%)	228 (95%)	13 (5%)	0	100	100
1	B	241/245 (98%)	226 (94%)	15 (6%)	0	100	100
1	C	241/245 (98%)	222 (92%)	19 (8%)	0	100	100
1	D	241/245 (98%)	224 (93%)	16 (7%)	1 (0%)	43	52
All	All	964/980 (98%)	900 (93%)	63 (6%)	1 (0%)	59	75

All (1) Ramachandran outliers are listed below:

Mol	Chain	Res	Type
1	D	243	PRO

5.3.2 Protein sidechains ⓘ

In the following table, the Percentiles column shows the percent sidechain outliers of the chain as a percentile score with respect to all X-ray entries followed by that with respect to entries of similar resolution. The Analysed column shows the number of residues for which the sidechain conformation was analysed, and the total number of residues.

Mol	Chain	Analysed	Rotameric	Outliers	Percentiles	
1	A	208/210 (99%)	198 (95%)	10 (5%)	35	45
1	B	208/210 (99%)	200 (96%)	8 (4%)	44	59
1	C	208/210 (99%)	201 (97%)	7 (3%)	49	64
1	D	208/210 (99%)	201 (97%)	7 (3%)	49	64
All	All	832/840 (99%)	800 (96%)	32 (4%)	44	59

All (32) residues with a non-rotameric sidechain are listed below:

Mol	Chain	Res	Type
1	A	24	ARG
1	A	68	LEU
1	A	70	GLU
1	A	93	GLN
1	A	113	LYS
1	A	149	GLU
1	A	159	LYS
1	A	165	ASN
1	A	174	ARG
1	A	199	LEU
1	B	26	LYS
1	B	134	MET
1	B	150	ARG
1	B	165	ASN
1	B	168	CYS
1	B	174	ARG
1	B	182	CYS
1	B	185	ASN
1	C	65	ARG
1	C	93	GLN
1	C	112	VAL
1	C	123	LEU
1	C	165	ASN
1	C	185	ASN
1	C	202	LYS
1	D	134	MET
1	D	167	ILE
1	D	168	CYS
1	D	174	ARG
1	D	181	LEU
1	D	235	LEU
1	D	244	LYS

Some sidechains can be flipped to improve hydrogen bonding and reduce clashes. All (31) such sidechains are listed below:

Mol	Chain	Res	Type
1	A	30	GLN
1	A	48	HIS
1	A	93	GLN
1	A	119	HIS
1	A	165	ASN
1	A	223	ASN
1	B	20	GLN
1	B	30	GLN
1	B	50	GLN
1	B	91	HIS
1	B	185	ASN
1	B	204	ASN
1	B	221(A)	GLN
1	C	30	GLN
1	C	36	HIS
1	C	48	HIS
1	C	72	HIS
1	C	79	GLN
1	C	119	HIS
1	C	146	ASN
1	C	165	ASN
1	C	185	ASN
1	C	221(A)	GLN
1	C	223	ASN
1	D	30	GLN
1	D	48	HIS
1	D	71	GLN
1	D	79	GLN
1	D	93	GLN
1	D	119	HIS
1	D	223	ASN

5.3.3 RNA ⓘ

There are no RNA chains in this entry.

5.4 Non-standard residues in protein, DNA, RNA chains ⓘ

There are no non-standard protein/DNA/RNA residues in this entry.

5.5 Carbohydrates ⓘ

There are no carbohydrates in this entry.

5.6 Ligand geometry ⓘ

4 ligands are modelled in this entry.

In the following table, the Counts columns list the number of bonds (or angles) for which Mogul statistics could be retrieved, the number of bonds (or angles) that are observed in the model and the number of bonds (or angles) that are defined in the chemical component dictionary. The Link column lists molecule types, if any, to which the group is linked. The Z score for a bond length (or angle) is the number of standard deviations the observed value is removed from the expected value. A bond length (or angle) with $|Z| > 2$ is considered an outlier worth inspection. RMSZ is the root-mean-square of all Z scores of the bond lengths (or angles).

Mol	Type	Chain	Res	Link	Bond lengths			Bond angles		
					Counts	RMSZ	# Z > 2	Counts	RMSZ	# Z > 2
2	5AM	A	999	1	45,45,45	2.92	19 (42%)	52,58,58	1.71	8 (15%)
2	5AM	B	998	1	45,45,45	2.94	19 (42%)	52,58,58	1.76	8 (15%)
2	5AM	C	997	1	45,45,45	2.97	19 (42%)	52,58,58	1.74	8 (15%)
2	5AM	D	996	1	45,45,45	2.92	20 (44%)	52,58,58	1.77	8 (15%)

In the following table, the Chirals column lists the number of chiral outliers, the number of chiral centers analysed, the number of these observed in the model and the number defined in the chemical component dictionary. Similar counts are reported in the Torsion and Rings columns. '-' means no outliers of that kind were identified.

Mol	Type	Chain	Res	Link	Chirals	Torsions	Rings
2	5AM	A	999	1	-	0/31/46/46	0/3/4/4
2	5AM	B	998	1	-	0/31/46/46	0/3/4/4
2	5AM	C	997	1	-	0/31/46/46	0/3/4/4
2	5AM	D	996	1	-	0/31/46/46	0/3/4/4

All (77) bond length outliers are listed below:

Mol	Chain	Res	Type	Atoms	Z	Observed(Å)	Ideal(Å)
2	B	998	5AM	O21-N20	-14.20	1.31	1.42
2	C	997	5AM	O21-N20	-13.87	1.31	1.42
2	A	999	5AM	O21-N20	-13.77	1.31	1.42
2	D	996	5AM	O21-N20	-13.76	1.31	1.42
2	C	997	5AM	C32-N29	4.50	1.46	1.35
2	C	997	5AM	C7-N23	4.41	1.39	1.34

Continued on next page...

Continued from previous page...

Mol	Chain	Res	Type	Atoms	Z	Observed(Å)	Ideal(Å)
2	A	999	5AM	C32-N29	4.31	1.46	1.35
2	D	996	5AM	C32-N29	4.23	1.45	1.35
2	B	998	5AM	C32-N29	4.22	1.45	1.35
2	A	999	5AM	C7-N23	3.91	1.39	1.34
2	D	996	5AM	C6-C5	3.84	1.58	1.53
2	D	996	5AM	C3-N4	3.79	1.45	1.34
2	A	999	5AM	C6-C5	3.70	1.58	1.53
2	A	999	5AM	C13-C8	3.66	1.47	1.38
2	D	996	5AM	C9-C8	3.66	1.47	1.38
2	B	998	5AM	C3-N4	3.65	1.44	1.34
2	A	999	5AM	C3-N4	3.65	1.44	1.34
2	A	999	5AM	C9-C8	3.64	1.47	1.38
2	B	998	5AM	C7-N23	3.61	1.38	1.34
2	B	998	5AM	C13-C8	3.61	1.47	1.38
2	C	997	5AM	C6-C5	3.59	1.58	1.53
2	C	997	5AM	C9-C8	3.59	1.47	1.38
2	C	997	5AM	C3-N4	3.57	1.44	1.34
2	C	997	5AM	C13-C8	3.51	1.46	1.38
2	D	996	5AM	C13-C8	3.48	1.46	1.38
2	B	998	5AM	C9-C8	3.48	1.46	1.38
2	B	998	5AM	C6-C5	3.39	1.57	1.53
2	D	996	5AM	C15-C5	3.31	1.58	1.53
2	D	996	5AM	C7-N23	3.15	1.38	1.34
2	A	999	5AM	C10-C9	3.01	1.46	1.39
2	B	998	5AM	C10-C9	3.00	1.46	1.39
2	D	996	5AM	C10-C9	2.99	1.45	1.39
2	C	997	5AM	C30-N29	2.93	1.52	1.47
2	B	998	5AM	C12-C13	2.92	1.45	1.39
2	C	997	5AM	C10-C9	2.92	1.45	1.39
2	A	999	5AM	C12-C13	2.87	1.45	1.39
2	A	999	5AM	C30-N29	2.87	1.52	1.47
2	C	997	5AM	C11-C10	2.86	1.46	1.37
2	B	998	5AM	C7-C6	-2.82	1.47	1.51
2	C	997	5AM	C12-C13	2.80	1.45	1.39
2	B	998	5AM	C11-C10	2.80	1.46	1.37
2	C	997	5AM	C28-N29	2.80	1.52	1.47
2	A	999	5AM	C11-C10	2.78	1.45	1.37
2	A	999	5AM	C7-C6	-2.77	1.47	1.51
2	B	998	5AM	C30-N29	2.76	1.52	1.47
2	D	996	5AM	C11-C10	2.74	1.45	1.37
2	D	996	5AM	C12-C13	2.71	1.45	1.39
2	D	996	5AM	C30-N29	2.68	1.51	1.47

Continued on next page...

Continued from previous page...

Mol	Chain	Res	Type	Atoms	Z	Observed(Å)	Ideal(Å)
2	A	999	5AM	C28-N29	2.56	1.51	1.47
2	D	996	5AM	C38-C37	2.56	1.44	1.38
2	C	997	5AM	C38-C37	2.46	1.44	1.38
2	C	997	5AM	C7-C6	-2.45	1.47	1.51
2	C	997	5AM	C39-C37	2.43	1.44	1.38
2	D	996	5AM	C39-C37	2.40	1.44	1.38
2	A	999	5AM	C39-C37	2.40	1.44	1.38
2	D	996	5AM	C31-N26	2.38	1.53	1.47
2	D	996	5AM	C7-C6	-2.36	1.47	1.51
2	B	998	5AM	C28-N29	2.36	1.51	1.47
2	B	998	5AM	C39-C37	2.32	1.44	1.38
2	C	997	5AM	C27-N26	2.29	1.53	1.47
2	A	999	5AM	C38-C37	2.25	1.44	1.38
2	C	997	5AM	C31-N26	2.25	1.53	1.47
2	C	997	5AM	C12-C11	2.23	1.44	1.37
2	A	999	5AM	C12-C11	2.21	1.44	1.37
2	A	999	5AM	C31-N26	2.20	1.53	1.47
2	A	999	5AM	C27-N26	2.18	1.53	1.47
2	B	998	5AM	C27-N26	2.18	1.53	1.47
2	B	998	5AM	C38-C37	2.16	1.43	1.38
2	D	996	5AM	C12-C11	2.14	1.44	1.37
2	B	998	5AM	C31-N26	2.11	1.52	1.47
2	A	999	5AM	C15-C5	2.10	1.56	1.53
2	D	996	5AM	C42-C41	2.08	1.43	1.37
2	B	998	5AM	C12-C11	2.06	1.43	1.37
2	B	998	5AM	C15-C5	2.06	1.56	1.53
2	C	997	5AM	C42-C41	2.04	1.43	1.37
2	D	996	5AM	C28-N29	2.04	1.50	1.47
2	D	996	5AM	C27-N26	2.02	1.52	1.47

All (32) bond angle outliers are listed below:

Mol	Chain	Res	Type	Atoms	Z	Observed(°)	Ideal(°)
2	D	996	5AM	C1-O2-C3	7.29	134.55	115.98
2	A	999	5AM	C1-O2-C3	7.16	134.23	115.98
2	B	998	5AM	C1-O2-C3	7.03	133.88	115.98
2	C	997	5AM	C1-O2-C3	6.51	132.58	115.98
2	C	997	5AM	C33-C32-N29	6.02	126.84	117.90
2	B	998	5AM	C33-C32-N29	5.81	126.53	117.90
2	D	996	5AM	C33-C32-N29	5.65	126.29	117.90
2	A	999	5AM	C33-C32-N29	5.65	126.29	117.90
2	C	997	5AM	O34-C32-C33	-4.81	112.32	121.40

Continued on next page...

Continued from previous page...

Mol	Chain	Res	Type	Atoms	Z	Observed(°)	Ideal(°)
2	B	998	5AM	O34-C32-C33	-4.57	112.78	121.40
2	A	999	5AM	O34-C32-C33	-4.55	112.81	121.40
2	D	996	5AM	O34-C32-C33	-4.40	113.11	121.40
2	B	998	5AM	C7-C6-C5	3.18	114.91	109.17
2	D	996	5AM	C7-C6-C5	3.17	114.87	109.17
2	C	997	5AM	O14-C3-N4	-3.01	119.54	124.90
2	B	998	5AM	O14-C3-N4	-2.91	119.72	124.90
2	C	997	5AM	C7-C6-C5	2.87	114.34	109.17
2	A	999	5AM	O14-C3-N4	-2.70	120.09	124.90
2	A	999	5AM	C22-C25-N26	2.70	118.29	112.92
2	C	997	5AM	C22-C25-N26	2.69	118.28	112.92
2	D	996	5AM	O14-C3-N4	-2.50	120.45	124.90
2	D	996	5AM	C25-N26-C27	-2.36	106.98	111.07
2	D	996	5AM	C5-N4-C3	2.36	126.10	122.26
2	B	998	5AM	C22-C25-N26	2.34	117.58	112.92
2	A	999	5AM	C7-C6-C5	2.33	113.37	109.17
2	A	999	5AM	C25-N26-C27	-2.21	107.25	111.07
2	A	999	5AM	C5-N4-C3	2.19	125.82	122.26
2	D	996	5AM	C22-C25-N26	2.14	117.18	112.92
2	B	998	5AM	C5-N4-C3	2.07	125.62	122.26
2	C	997	5AM	C25-N26-C27	-2.07	107.49	111.07
2	C	997	5AM	C15-C5-N4	-2.05	107.21	109.92
2	B	998	5AM	C25-N26-C27	-2.00	107.61	111.07

There are no chirality outliers.

There are no torsion outliers.

There are no ring outliers.

5.7 Other polymers ⓘ

There are no such residues in this entry.

5.8 Polymer linkage issues

There are no chain breaks in this entry.

6 Fit of model and data ⓘ

6.1 Protein, DNA and RNA chains ⓘ

In the following table, the column labelled ‘#RSRZ> 2’ contains the number (and percentage) of RSRZ outliers, followed by percent RSRZ outliers for the chain as percentile scores relative to all X-ray entries and entries of similar resolution. The OWAB column contains the minimum, median, 95th percentile and maximum values of the occupancy-weighted average B-factor per residue. The column labelled ‘Q< 0.9’ lists the number of (and percentage) of residues with an average occupancy less than 0.9.

Mol	Chain	Analysed	<RSRZ>	#RSRZ>2	OWAB(Å ²)	Q<0.9
1	A	243/245 (99%)	-0.43	0 100 100	11, 22, 45, 61	0
1	B	243/245 (99%)	-0.25	2 (0%) 83 86	14, 27, 50, 66	0
1	C	243/245 (99%)	-0.43	0 100 100	11, 23, 43, 62	0
1	D	243/245 (99%)	-0.24	3 (1%) 75 79	14, 27, 52, 66	0
All	All	972/980 (99%)	-0.34	5 (0%) 88 91	11, 24, 49, 66	0

All (5) RSRZ outliers are listed below:

Mol	Chain	Res	Type	RSRZ
1	B	206	THR	3.4
1	D	203	VAL	2.8
1	D	135	PRO	2.8
1	B	135	PRO	2.6
1	D	206	THR	2.4

6.2 Non-standard residues in protein, DNA, RNA chains ⓘ

There are no non-standard protein/DNA/RNA residues in this entry.

6.3 Carbohydrates ⓘ

There are no carbohydrates in this entry.

6.4 Ligands ⓘ

In the following table, the Atoms column lists the number of modelled atoms in the group and the number defined in the chemical component dictionary. LLDF column lists the quality of electron density of the group with respect to its neighbouring residues in protein, DNA or RNA chains.

The B-factors column lists the minimum, median, 95th percentile and maximum values of B factors of atoms in the group. The column labelled 'Q< 0.9' lists the number of atoms with occupancy less than 0.9.

Mol	Type	Chain	Res	Atoms	RSR	LLDF	B-factors(Å ²)	Q<0.9
2	5AM	B	998	42/42	0.22	-	35,51,69,70	0
2	5AM	C	997	42/42	0.19	-	28,45,77,79	0
2	5AM	D	996	42/42	0.26	-	36,50,74,74	0
2	5AM	A	999	42/42	0.19	-	18,45,58,60	0

6.5 Other polymers ⓘ

There are no such residues in this entry.