



Full wwPDB X-ray Structure Validation Report

Feb 26, 2014 – 11:47 PM GMT

PDB ID : 2GDI
Title : Crystal structure of thiamine pyrophosphate-specific riboswitch in complex with thiamine pyrophosphate
Authors : Serganov, A.
Deposited on : 2006-03-16
Resolution : 2.05 Å (reported)

This is a full wwPDB validation report for a publicly released PDB entry.
We welcome your comments at validation@mail.wwpdb.org
A user guide is available at <http://wwpdb.org/ValidationPDFNotes.html>

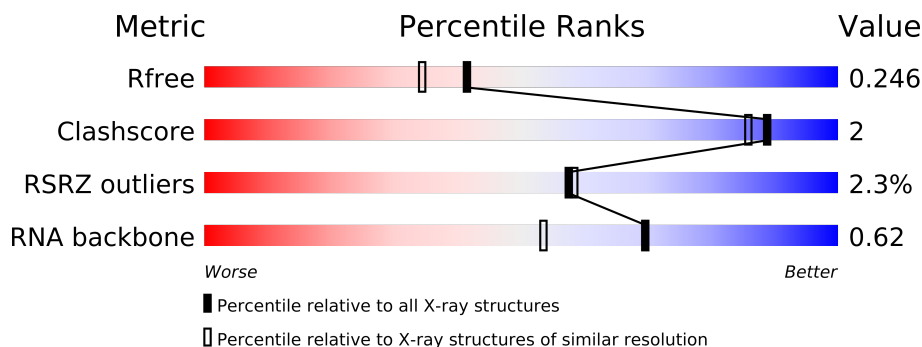
The following versions of software and data (see [references](#)) were used in the production of this report:

MolProbity : 4.02b-467
Mogul : 1.15 2013
Xtriage (Phenix) : dev-1323
EDS : stable22639
Percentile statistics : 21963
Refmac : 5.8.0049
CCP4 : 6.3.0 (Settle)
Ideal geometry (proteins) : Engh & Huber (2001)
Ideal geometry (DNA, RNA) : Parkinson et. al. (1996)
Validation Pipeline (wwPDB-VP) : stable22683

1 Overall quality at a glance

The reported resolution of this entry is 2.05 Å.

Percentile scores (ranging between 0-100) for global validation metrics of the entry are shown in the following graphic. The table shows the number of entries on which the scores are based.



Metric	Whole archive (#Entries)	Similar resolution (#Entries, resolution range(Å))
R_{free}	66092	1380 (2.06-2.02)
Clashscore	79885	1577 (2.06-2.02)
RSRZ outliers	66119	1381 (2.06-2.02)
RNA backbone	1838	1010 (2.96-1.12)

The table below summarises the geometric issues observed across the polymeric chains and their fit to the electron density. The red, orange, yellow and green segments on the lower bar indicate the fraction of residues that contain outliers for ≥ 3 , 2, 1 and 0 types of geometric quality criteria. The upper red bar (where present) indicates the fraction of residues that have poor fit to the electron density.

Mol	Chain	Length	Quality of chain
1	X	80	
1	Y	80	

The following table lists non-polymeric compounds that are outliers for geometric or electron-density-fit criteria:

Mol	Type	Chain	Res	Geometry	Electron density
4	MG	X	101	-	X
4	MG	X	102	-	X
4	MG	Y	113	-	X

2 Entry composition

There are 6 unique types of molecules in this entry. The entry contains 3817 atoms, of which 0 are hydrogen and 0 are deuterium.

In the tables below, the ZeroOcc column contains the number of atoms modelled with zero occupancy, the AltConf column contains the number of residues with at least one atom in alternate conformation and the Trace column contains the number of residues modelled with at most 2 atoms.

- Molecule 1 is a RNA chain called TPP riboswitch.

Mol	Chain	Residues	Atoms					ZeroOcc	AltConf	Trace
1	X	80	Total	C	N	O	P	0	0	0
			1719	763	308	566	82			
1	Y	80	Total	C	N	O	P	0	0	0
			1723	763	308	569	83			

- Molecule 2 is SODIUM ION (three-letter code: NA) (formula: Na).

Mol	Chain	Residues	Atoms		ZeroOcc	AltConf
2	X	2	Total	Na	0	0
			2	2		

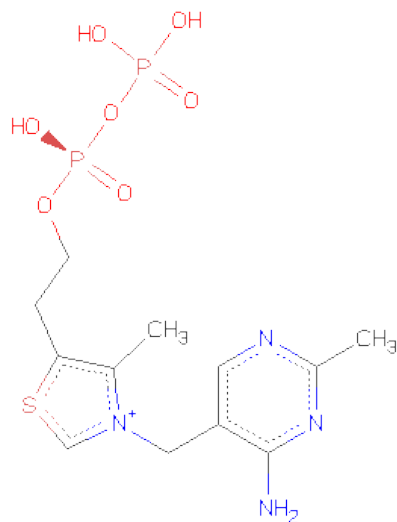
- Molecule 3 is POTASSIUM ION (three-letter code: K) (formula: K).

Mol	Chain	Residues	Atoms		ZeroOcc	AltConf
3	X	3	Total	K	0	0
			3	3		

- Molecule 4 is MAGNESIUM ION (three-letter code: MG) (formula: Mg).

Mol	Chain	Residues	Atoms		ZeroOcc	AltConf
4	X	3	Total	Mg	0	0
			3	3		
4	Y	3	Total	Mg	0	0
			3	3		

- Molecule 5 is THIAMINE DIPHOSPHATE (three-letter code: TPP) (formula: C₁₂H₁₉N₄O₇P₂S).



Mol	Chain	Residues	Atoms						ZeroOcc	AltConf
5	X	1	Total	C	N	O	P	S	0	0
			26	12	4	7	2	1		
5	Y	1	Total	C	N	O	P	S	0	0
			26	12	4	7	2	1		

- Molecule 6 is water.

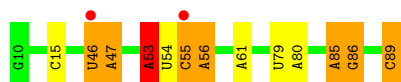
Mol	Chain	Residues	Atoms		ZeroOcc	AltConf
6	X	191	Total	O	0	0
			191	191		
6	Y	121	Total	O	0	0
			121	121		

3 Residue-property plots

These plots are drawn for all protein, RNA and DNA chains in the entry. The first graphic for a chain summarises the proportions of errors displayed in the second graphic. The second graphic shows the sequence view annotated by issues in geometry and electron density. Residues are color-coded according to the number of geometric quality criteria for which they contain at least one outlier: green = 0, yellow = 1, orange = 2 and red = 3 or more. A red dot above a residue indicates a poor fit to the electron density ($\text{RSRZ} > 2$). Stretches of 2 or more consecutive residues without any outlier are shown as a green connector. Residues present in the sample, but not in the model, are shown in grey.

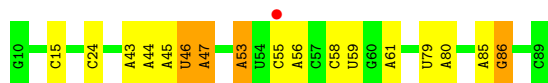
- Molecule 1: TPP riboswitch

Chain X: 



- Molecule 1: TPP riboswitch

Chain Y: 



4 Data and refinement statistics

Property	Value	Source
Space group	C 1 2 1	Depositor
Cell constants a, b, c, α , β , γ	148.82Å 29.56Å 95.17Å 90.00° 94.55° 90.00°	Depositor
Resolution (Å)	20.00 – 2.05 19.57 – 2.04	Depositor EDS
% Data completeness (in resolution range)	99.8 (20.00-2.05) 99.2 (19.57-2.04)	Depositor EDS
R_{merge}	0.06	Depositor
R_{sym}	(Not available)	Depositor
$\langle I/\sigma(I) \rangle$ ¹	2.80 (at 2.04Å)	Xtriage
Refinement program	REFMAC 5.2.0005	Depositor
R, R_{free}	0.208 , 0.241 0.211 , 0.246	Depositor DCC
R_{free} test set	1353 reflections (5.27%)	DCC
Wilson B-factor (Å ²)	36.9	Xtriage
Anisotropy	0.309	Xtriage
Bulk solvent k_{sol} (e/Å ³), B_{sol} (Å ²)	0.36 , 55.2	EDS
Estimated twinning fraction	No twinning to report.	Xtriage
L-test for twinning	$\langle L \rangle = 0.50$, $\langle L^2 \rangle = 0.33$	Xtriage
Outliers	1 of 27007 reflections (0.004%)	Xtriage
F_o, F_c correlation	0.94	EDS
Total number of atoms	3817	wwPDB-VP
Average B, all atoms (Å ²)	35.0	wwPDB-VP

Xtriage's analysis on translational NCS is as follows: *The largest off-origin peak in the Patterson function is 6.59% of the height of the origin peak. No significant pseudotranslation is detected.*

¹Intensities estimated from amplitudes.

5 Model quality i

5.1 Standard geometry i

Bond lengths and bond angles in the following residue types are not validated in this section: MG, NA, K, GTP, TPP, CCC

The Z score for a bond length (or angle) is the number of standard deviations the observed value is removed from the expected value. A bond length (or angle) with $|Z| > 5$ is considered an outlier worth inspection. RMSZ is the root-mean-square of all Z scores of the bond lengths (or angles).

Mol	Chain	Bond lengths		Bond angles	
		RMSZ	$\# Z > 5$	RMSZ	$\# Z > 5$
1	X	0.42	0/1865	0.93	2/2906 (0.1%)
1	Y	0.40	0/1865	0.89	1/2906 (0.0%)
All	All	0.41	0/3730	0.91	3/5812 (0.1%)

There are no bond length outliers.

All (3) bond angle outliers are listed below:

Mol	Chain	Res	Type	Atoms	Z	Observed(°)	Ideal(°)
1	X	86	G	C4'-C3'-C2'	-5.88	96.72	102.60
1	Y	86	G	C4'-C3'-C2'	-5.33	97.27	102.60
1	X	53	A	C1'-O4'-C4'	-5.33	105.64	109.90

There are no chirality outliers.

There are no planarity outliers.

5.2 Close contacts i

In the following table, the Non-H and H(model) columns list the number of non-hydrogen atoms and hydrogen atoms in the chain respectively. The H(added) column lists the number of hydrogens added by MolProbity. The Clashes column lists the number of clashes within the asymmetric unit, and the number in parentheses is this value normalized per 1000 atoms of the molecule in the chain. The Symm-Clashes column gives symmetry related clashes, in the same way as for the Clashes column.

Mol	Chain	Non-H	H(model)	H(added)	Clashes	Symm-Clashes
1	X	1719	0	858	5	0
1	Y	1723	0	861	5	0
2	X	2	0	0	0	0
3	X	3	0	0	0	0

Continued on next page...

Continued from previous page...

Mol	Chain	Non-H	H(model)	H(added)	Clashes	Symm-Clashes
4	X	3	0	0	0	0
4	Y	3	0	0	0	0
5	X	26	0	16	1	0
5	Y	26	0	16	1	0
6	X	191	0	0	0	0
6	Y	121	0	0	0	0
All	All	3817	0	1751	12	0

Clashscore is defined as the number of clashes calculated for the entry per 1000 atoms (including hydrogens) of the entry. The overall clashscore for this entry is 2.

All (12) close contacts within the same asymmetric unit are listed below.

Atom-1	Atom-2	Distance(Å)	Clash(Å)
1:Y:46:U:H4'	1:Y:47:A:O5'	1.73	0.88
1:X:46:U:H4'	1:X:47:A:O5'	1.92	0.70
1:X:55:C:O2'	1:X:56:A:H5'	1.97	0.64
1:X:85:A:H1'	1:X:86:G:C8	2.44	0.53
1:Y:58:C:H2'	1:Y:59:U:H6	1.76	0.51
5:X:100:TPP:C2	5:X:100:TPP:H6'	2.42	0.49
1:Y:79:U:H4'	1:Y:80:A:OP2	2.13	0.48
1:Y:58:C:H2'	1:Y:59:U:C6	2.49	0.47
1:X:53:A:N3	1:X:53:A:H2'	2.31	0.45
5:Y:100:TPP:H6'	5:Y:100:TPP:C2	2.48	0.43
1:X:89:CCC:O1C	1:X:89:CCC:H4'	2.19	0.41
1:Y:53:A:H2'	1:Y:53:A:N3	2.35	0.41

There are no symmetry-related clashes.

5.3 Torsion angles

5.3.1 Protein backbone ⓘ

There are no protein chains in this entry.

5.3.2 Protein sidechains ⓘ

There are no protein chains in this entry.

5.3.3 RNA ⓘ

Mol	Chain	Analysed	Backbone Outliers	Pucker Outliers
1	X	78/80 (97%)	11 (14%)	4 (5%)
1	Y	78/80 (97%)	12 (15%)	4 (5%)
All	All	156/160 (97%)	23 (14%)	8 (5%)

All (23) RNA backbone outliers are listed below:

Mol	Chain	Res	Type
1	X	15	C
1	X	46	U
1	X	47	A
1	X	54	U
1	X	55	C
1	X	56	A
1	X	61	A
1	X	79	U
1	X	80	A
1	X	85	A
1	X	89	CCC
1	Y	15	C
1	Y	24	C
1	Y	43	A
1	Y	44	A
1	Y	45	A
1	Y	46	U
1	Y	47	A
1	Y	55	C
1	Y	56	A
1	Y	61	A
1	Y	85	A
1	Y	86	G

All (8) RNA pucker outliers are listed below:

Mol	Chain	Res	Type
1	X	46	U
1	X	53	A
1	X	54	U
1	X	79	U
1	Y	43	A
1	Y	44	A
1	Y	46	U
1	Y	53	A

5.4 Non-standard residues in protein, DNA, RNA chains ⓘ

4 non-standard protein/DNA/RNA residues are modelled in this entry.

In the following table, the Counts columns list the number of bonds (or angles) for which Mogul statistics could be retrieved, the number of bonds (or angles) that are observed in the model and the number of bonds (or angles) that are defined in the chemical component dictionary. The Link column lists molecule types, if any, to which the group is linked. The Z score for a bond length (or angle) is the number of standard deviations the observed value is removed from the expected value. A bond length (or angle) with $|Z| > 2$ is considered an outlier worth inspection. RMSZ is the root-mean-square of all Z scores of the bond lengths (or angles).

Mol	Type	Chain	Res	Link	Bond lengths			Bond angles		
					Counts	RMSZ	# $ Z > 2$	Counts	RMSZ	# $ Z > 2$
1	GTP	X	10	1	30,30,34	1.09	1 (3%)	44,47,54	4.31	4 (9%)
1	CCC	X	89	1	23,25,26	1.41	3 (13%)	32,38,41	2.73	8 (25%)
1	GTP	Y	10	1	34,34,34	1.06	1 (2%)	51,54,54	4.23	6 (11%)
1	CCC	Y	89	1	23,25,26	1.36	3 (13%)	32,38,41	2.93	11 (34%)

In the following table, the Chirals column lists the number of chiral outliers, the number of chiral centers analysed, the number of these observed in the model and the number defined in the chemical component dictionary. Similar counts are reported in the Torsion and Rings columns. '-' means no outliers of that kind were identified.

Mol	Type	Chain	Res	Link	Chirals	Torsions	Rings
1	GTP	X	10	1	-	0/16/32/38	0/1/3/3
1	CCC	X	89	1	-	0/6/35/36	0/1/3/3
1	GTP	Y	10	1	-	0/22/38/38	0/1/3/3
1	CCC	Y	89	1	-	0/6/35/36	0/1/3/3

All (8) bond length outliers are listed below:

Mol	Chain	Res	Type	Atoms	Z	Observed(Å)	Ideal(Å)
1	Y	10	GTP	PB-O3A	-4.50	1.51	1.59
1	X	10	GTP	PB-O3A	-4.32	1.51	1.60
1	X	89	CCC	P-OP1	4.15	1.51	1.46
1	Y	89	CCC	P-OP1	4.03	1.51	1.46
1	X	89	CCC	PC-O2'	3.20	1.61	1.58
1	Y	89	CCC	C2-N1	3.13	1.41	1.38
1	X	89	CCC	C2-N1	3.12	1.41	1.38
1	Y	89	CCC	PC-O2'	2.77	1.61	1.58

All (29) bond angle outliers are listed below:

Mol	Chain	Res	Type	Atoms	Z	Observed(°)	Ideal(°)
1	Y	10	GTP	C6-C5-N7	-28.77	130.27	134.14
1	X	10	GTP	C6-C5-N7	-27.55	130.43	134.14
1	X	89	CCC	O2'-PC-O3'	-9.52	89.55	97.06
1	Y	89	CCC	O2'-PC-O3'	-9.31	89.72	97.06
1	Y	89	CCC	O3'-C3'-C4'	7.10	120.29	110.97
1	Y	89	CCC	C6-C5-C4	5.98	119.95	117.47
1	X	89	CCC	O3'-C3'-C4'	5.66	118.41	110.97
1	X	89	CCC	C6-C5-C4	5.65	119.81	117.47
1	Y	10	GTP	O3A-PB-O3B	4.36	110.53	101.66
1	X	89	CCC	O2C-PC-O1C	4.10	122.20	109.46
1	X	10	GTP	PB-O3A-PA	3.96	149.97	132.95
1	X	89	CCC	O3'-C3'-C2'	-3.96	97.66	105.13
1	Y	89	CCC	O2C-PC-O1C	3.89	121.54	109.46
1	Y	89	CCC	PC-O3'-C3'	3.86	116.71	111.48
1	Y	89	CCC	O3'-C3'-C2'	-3.69	98.18	105.13
1	Y	10	GTP	PB-O3B-PG	-3.55	121.28	131.68
1	Y	89	CCC	C2-N3-C4	3.30	120.35	115.57
1	X	89	CCC	C2-N3-C4	3.26	120.29	115.57
1	Y	10	GTP	C6-N1-C2	3.06	124.87	119.51
1	Y	10	GTP	O2A-PA-O3A	-3.05	90.66	105.14
1	X	10	GTP	C6-N1-C2	2.95	124.67	119.51
1	Y	89	CCC	O3'-PC-O1C	-2.59	109.31	116.15
1	X	89	CCC	O2'-PC-O1C	-2.44	109.72	116.15
1	Y	89	CCC	O4'-C1'-N1	2.39	113.10	108.06
1	Y	89	CCC	O2'-PC-O1C	-2.35	109.94	116.15
1	Y	10	GTP	C2-N3-C4	-2.33	111.82	115.09
1	Y	89	CCC	PC-O2'-C2'	2.19	114.45	111.48
1	X	89	CCC	O3'-PC-O1C	-2.10	110.62	116.15
1	X	10	GTP	C2-N3-C4	-2.05	112.21	115.09

There are no chirality outliers.

There are no torsion outliers.

There are no ring outliers.

5.5 Carbohydrates ⓘ

There are no carbohydrates in this entry.

5.6 Ligand geometry ⓘ

Of 13 ligands modelled in this entry, 11 are monoatomic - leaving 2 for Mogul analysis.

In the following table, the Counts columns list the number of bonds (or angles) for which Mogul statistics could be retrieved, the number of bonds (or angles) that are observed in the model and the number of bonds (or angles) that are defined in the chemical component dictionary. The Link column lists molecule types, if any, to which the group is linked. The Z score for a bond length (or angle) is the number of standard deviations the observed value is removed from the expected value. A bond length (or angle) with $|Z| > 2$ is considered an outlier worth inspection. RMSZ is the root-mean-square of all Z scores of the bond lengths (or angles).

Mol	Type	Chain	Res	Link	Bond lengths			Bond angles		
					Counts	RMSZ	$\# Z > 2$	Counts	RMSZ	$\# Z > 2$
5	TPP	X	100	4	27,27,27	2.31	2 (7%)	40,40,40	2.22	11 (27%)
5	TPP	Y	100	4	27,27,27	2.31	2 (7%)	40,40,40	2.46	14 (35%)

In the following table, the Chirals column lists the number of chiral outliers, the number of chiral centers analysed, the number of these observed in the model and the number defined in the chemical component dictionary. Similar counts are reported in the Torsion and Rings columns. '-' means no outliers of that kind were identified.

Mol	Type	Chain	Res	Link	Chirals	Torsions	Rings
5	TPP	X	100	4	-	0/17/17/17	0/2/2/2
5	TPP	Y	100	4	-	0/17/17/17	0/2/2/2

All (4) bond length outliers are listed below:

Mol	Chain	Res	Type	Atoms	Z	Observed(Å)	Ideal(Å)
5	Y	100	TPP	C5-C4	10.79	1.49	1.36
5	X	100	TPP	C5-C4	10.70	1.49	1.36
5	X	100	TPP	C4-N3	-2.63	1.36	1.39
5	Y	100	TPP	C4-N3	-2.38	1.36	1.39

All (25) bond angle outliers are listed below:

Mol	Chain	Res	Type	Atoms	Z	Observed(°)	Ideal(°)
5	Y	100	TPP	C6-C5-C4	10.42	135.02	127.44
5	X	100	TPP	C6-C5-C4	9.85	134.61	127.44
5	Y	100	TPP	C2-S1-C5	4.20	94.44	91.63
5	Y	100	TPP	PA-O3A-PB	-4.11	119.64	131.68
5	Y	100	TPP	C4-C5-S1	-3.54	107.04	109.93
5	X	100	TPP	C6-C5-S1	-3.43	117.49	122.28
5	Y	100	TPP	C6-C5-S1	-3.11	117.93	122.28
5	X	100	TPP	C2-S1-C5	2.94	93.60	91.63
5	Y	100	TPP	C6'-N1'-C2'	2.84	120.66	115.68
5	X	100	TPP	N1'-C2'-N3'	-2.81	120.58	125.65
5	Y	100	TPP	N1'-C2'-N3'	-2.78	120.63	125.65

Continued on next page...

Continued from previous page...

Mol	Chain	Res	Type	Atoms	Z	Observed(°)	Ideal(°)
5	X	100	TPP	C6'-N1'-C2'	2.66	120.36	115.68
5	X	100	TPP	C4-C5-S1	-2.49	107.89	109.93
5	Y	100	TPP	C5-C4-N3	2.43	112.46	107.53
5	X	100	TPP	CM2-C2'-N1'	2.40	119.88	117.02
5	Y	100	TPP	C6'-C5'-C4'	2.29	118.90	115.69
5	Y	100	TPP	C5'-C6'-N1'	-2.25	119.80	123.86
5	Y	100	TPP	CM2-C2'-N1'	2.23	119.68	117.02
5	X	100	TPP	C5-C4-N3	2.23	112.06	107.53
5	Y	100	TPP	CM4-C4-C5	-2.20	123.60	129.10
5	X	100	TPP	CM4-C4-C5	-2.18	123.65	129.10
5	X	100	TPP	C6'-C5'-C4'	2.13	118.69	115.69
5	X	100	TPP	C5'-C6'-N1'	-2.05	120.16	123.86
5	Y	100	TPP	C5'-C7'-N3	-2.05	109.78	113.28
5	Y	100	TPP	N4'-C4'-N3'	2.03	119.82	116.88

There are no chirality outliers.

There are no torsion outliers.

There are no ring outliers.

5.7 Other polymers ⓘ

There are no such residues in this entry.

5.8 Polymer linkage issues

There are no chain breaks in this entry.

6 Fit of model and data ⓘ

6.1 Protein, DNA and RNA chains ⓘ

In the following table, the column labelled ‘#RSRZ> 2’ contains the number (and percentage) of RSRZ outliers, followed by percent RSRZ outliers for the chain as percentile scores relative to all X-ray entries and entries of similar resolution. The OWAB column contains the minimum, median, 95th percentile and maximum values of the occupancy-weighted average B-factor per residue. The column labelled ‘Q< 0.9’ lists the number of (and percentage) of residues with an average occupancy less than 0.9.

Mol	Chain	Analysed	<RSRZ>	#RSRZ>2	OWAB(Å ²)	Q<0.9
1	X	80/80 (100%)	0.38	2 (2%) 54 55	27, 34, 48, 62	0
1	Y	80/80 (100%)	0.30	1 (1%) 74 76	28, 34, 44, 56	0
All	All	160/160 (100%)	0.34	3 (1%) 57 65	27, 34, 45, 62	0

All (3) RSRZ outliers are listed below:

Mol	Chain	Res	Type	RSRZ
1	X	55	C	6.4
1	Y	55	C	5.4
1	X	46	U	2.0

6.2 Non-standard residues in protein, DNA, RNA chains ⓘ

In the following table, the Atoms column lists the number of modelled atoms in the group and the number defined in the chemical component dictionary. LLDF column lists the quality of electron density of the group with respect to its neighbouring residues in protein, DNA or RNA chains. The B-factors column lists the minimum, median, 95th percentile and maximum values of B factors of atoms in the group. The column labelled ‘Q< 0.9’ lists the number of atoms with occupancy less than 0.9.

Mol	Type	Chain	Res	Atoms	RSR	LLDF	B-factors(Å ²)	Q<0.9
1	GTP	Y	10	32/32	0.20	5.90	37,39,51,52	0
1	CCC	X	89	23/24	0.24	4.60	35,37,39,40	0
1	GTP	X	10	28/32	0.18	3.91	29,33,42,42	0
1	CCC	Y	89	23/24	0.12	-1.66	32,33,35,35	0

6.3 Carbohydrates ⓘ

There are no carbohydrates in this entry.

6.4 Ligands ⓘ

In the following table, the Atoms column lists the number of modelled atoms in the group and the number defined in the chemical component dictionary. LLDF column lists the quality of electron density of the group with respect to its neighbouring residues in protein, DNA or RNA chains. The B-factors column lists the minimum, median, 95th percentile and maximum values of B factors of atoms in the group. The column labelled 'Q< 0.9' lists the number of atoms with occupancy less than 0.9.

Mol	Type	Chain	Res	Atoms	RSR	LLDF	B-factors(Å ²)	Q<0.9
4	MG	X	101	1/1	0.25	9.73	32,32,32,32	0
4	MG	Y	113	1/1	0.16	5.72	38,38,38,38	0
4	MG	X	102	1/1	0.23	2.23	34,34,34,34	0
3	K	X	125	1/1	0.22	0.85	39,39,39,39	0
5	TPP	Y	100	26/26	0.16	0.59	23,31,38,40	0
5	TPP	X	100	26/26	0.21	0.56	25,32,34,34	0
2	NA	X	121	1/1	0.15	0.55	40,40,40,40	0
3	K	X	124	1/1	0.18	-0.58	39,39,39,39	0
4	MG	Y	111	1/1	0.12	-1.17	32,32,32,32	0
2	NA	X	122	1/1	0.09	-1.39	36,36,36,36	0
4	MG	Y	112	1/1	0.10	-2.29	31,31,31,31	0
4	MG	X	103	1/1	0.12	-2.58	42,42,42,42	0
3	K	X	123	1/1	0.06	-7.18	38,38,38,38	0

6.5 Other polymers ⓘ

There are no such residues in this entry.